

## The Antique Pattern Library

For more information, please see our website at:

<http://www.antiquepatternlibrary.org>



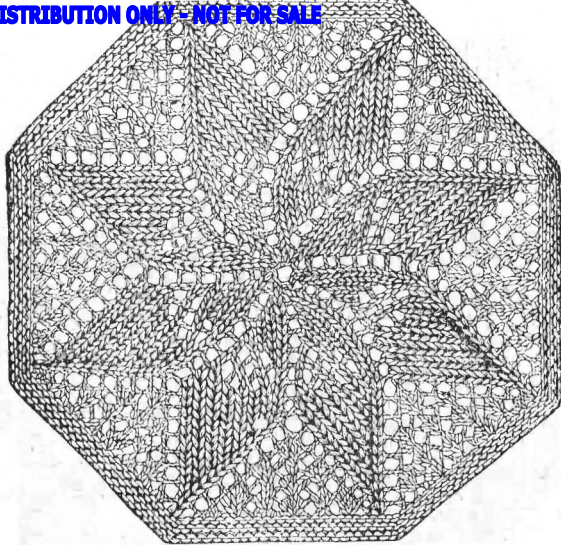
This is a scan of an antique book that is, to the best of our knowledge, in the public domain. The scan itself has been photo-edited for readability, and is licensed under the **Creative Commons** Attribution-NonCommercial-ShareAlike License. To view a copy of this license, visit <http://creativecommons.org/licenses/by-nc-sa/2.5/> or send a letter to Creative Commons, 559 Nathan Abbott Way, Stanford, California 94305, USA.

You may share copies or printouts of this scan freely. You may not sell copies or printouts.

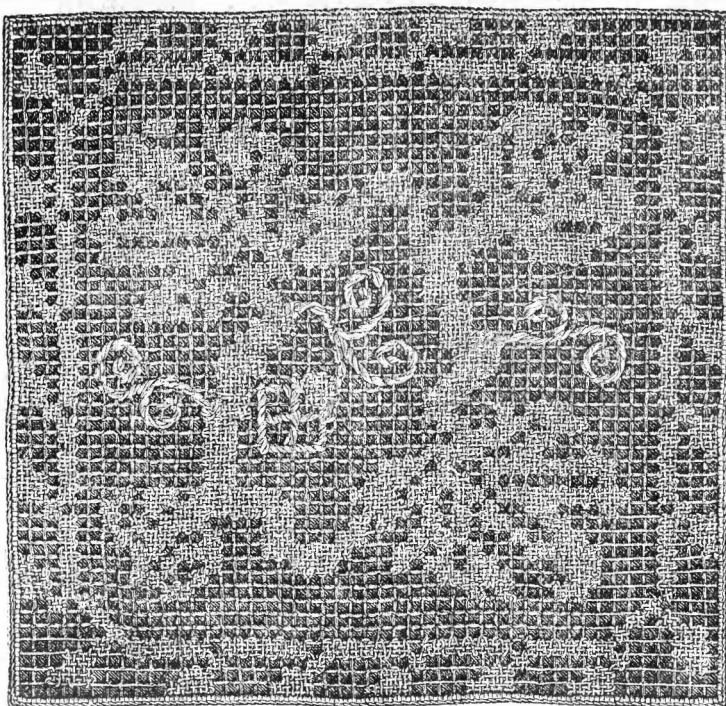
Donated by

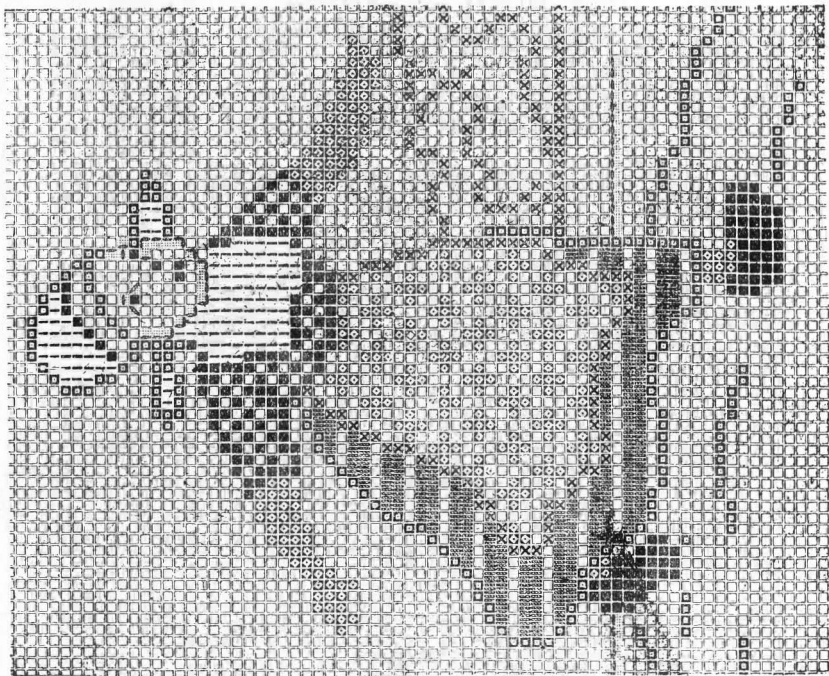
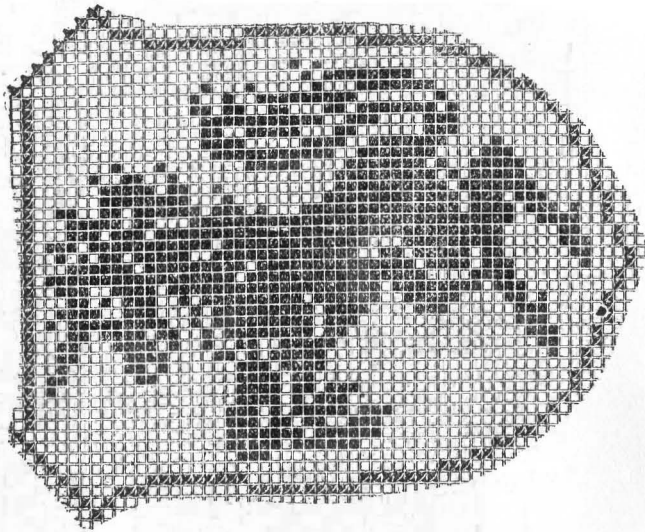
**Luann Pfost**

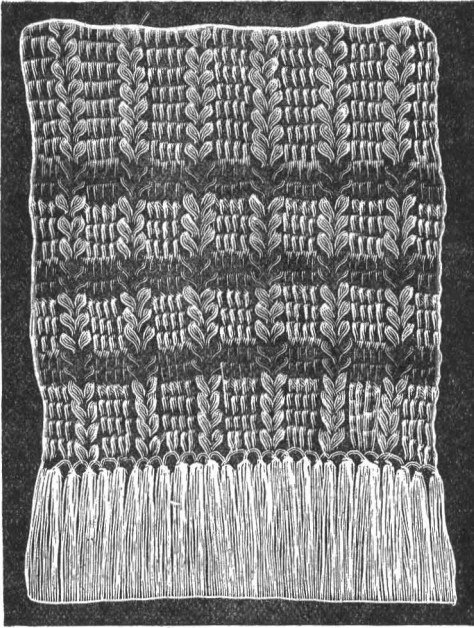
**11/2010**



Knitted Pattern for an Octagon Quilt.







## SCARF SHAWL—Crocheted

Materials required: HENRY HESSE SHETLAND FLOSS, 8 skeins White, 2 skeins Light Blue, No. 877 or 879.  
No. 8 bone crochet hook.

### DIRECTIONS FOR MAKING.

Make a chain of 120 stitches.

1st Row—Four double crochet into four following chains, skip two chains and put four double crochet into one stitch forming a shell, skip two chains and repeat from the first until you have 13 straight clusters and 12 shells.

2nd Row—Make three chains, crochet into each of the four stitches with double crochet, taking the full stitch from the front, then make a shell on the shell; continue this until end of row.

3rd Row—Make three chains, crochet into each of the four stitches with four double crochet, taking the full stitch from the back; make a shell into the shell; continue until end of row.

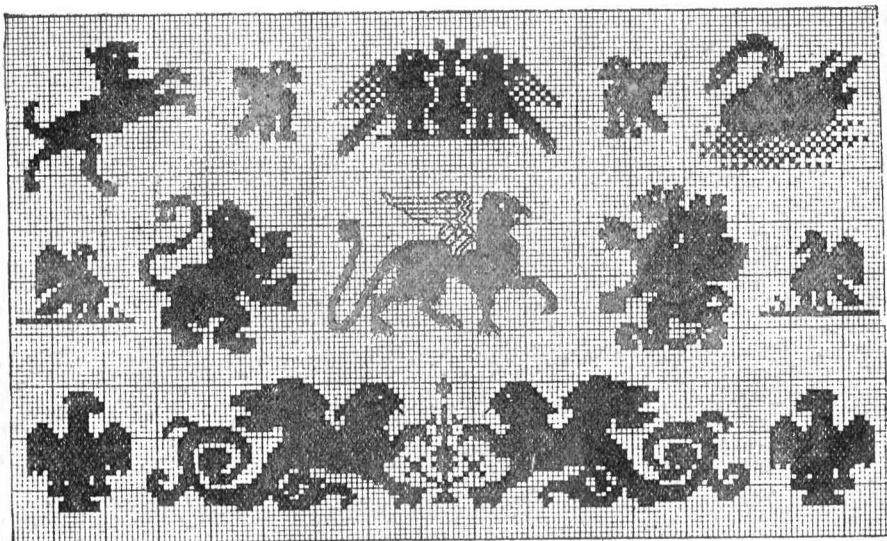
4th Row—Same as 2nd.

5th Row—Same as 3rd.

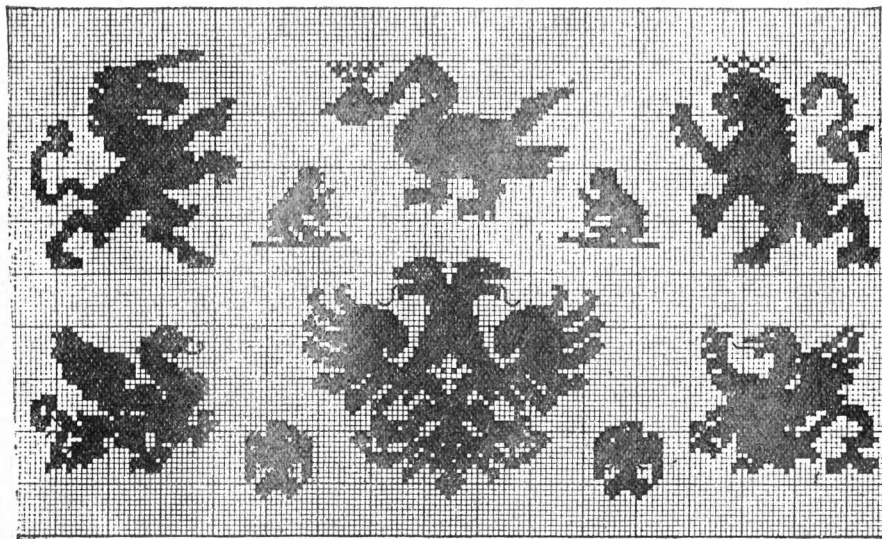
Continue until you have the required length, making:

Four rows of white; two rows of blue; three rows of white;  
two rows of blue; three rows of white; two rows of blue;  
sixty-six rows of white; two rows of blue; three rows of white;  
two rows of blue; three rows of white; two rows of blue;  
four rows of white.

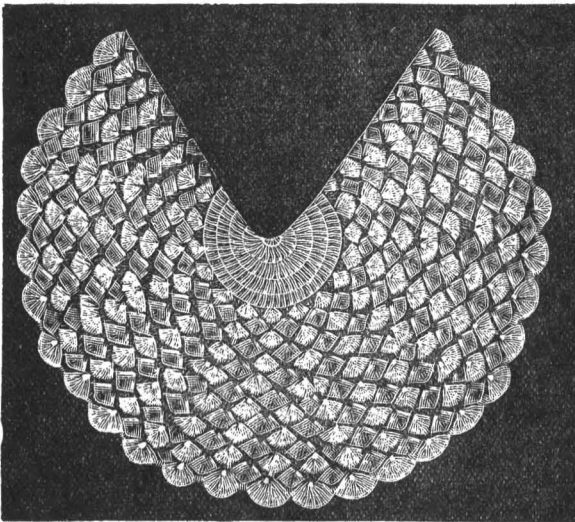
Finish each end with white fringe. This shawl is also pretty made in solid colors.



For embroidering, use the cotton, flax and silk articles, mark D.M.C



For embroidering, use the cotton, flax and silk articles, mark D.M.C



## CIRCULAR SHAWL—Crocheted.

---

### DIRECTIONS FOR MAKING.

Materials required: HENRY HESSE SHETLAND FLOSS, 8 skeins of white, 5 skeins of Sunrise No. 576, No. 8 bone crochet hook.

Make a chain of four stitches and join.

1st Row—In this space make 30 long crochet.

2nd Row—Make two long crochet in each crochet of the 1st row.

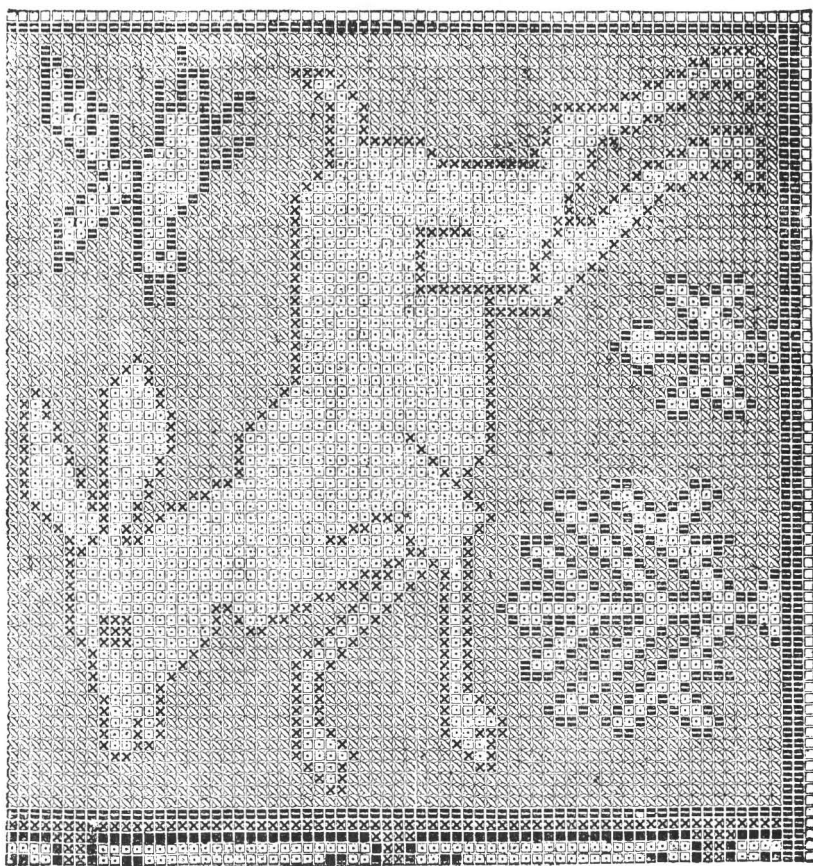
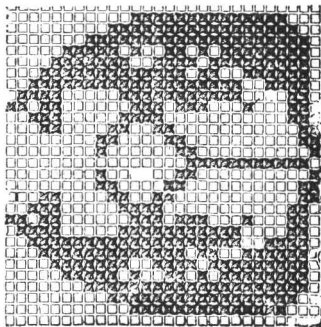
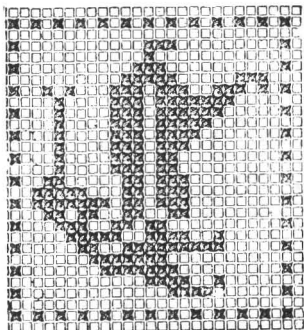
3rd Row—Make two long crochet in every second space.

4th Row—Same as third.

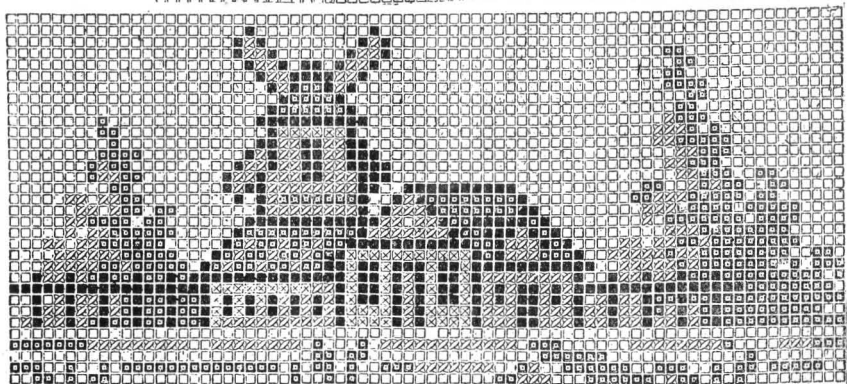
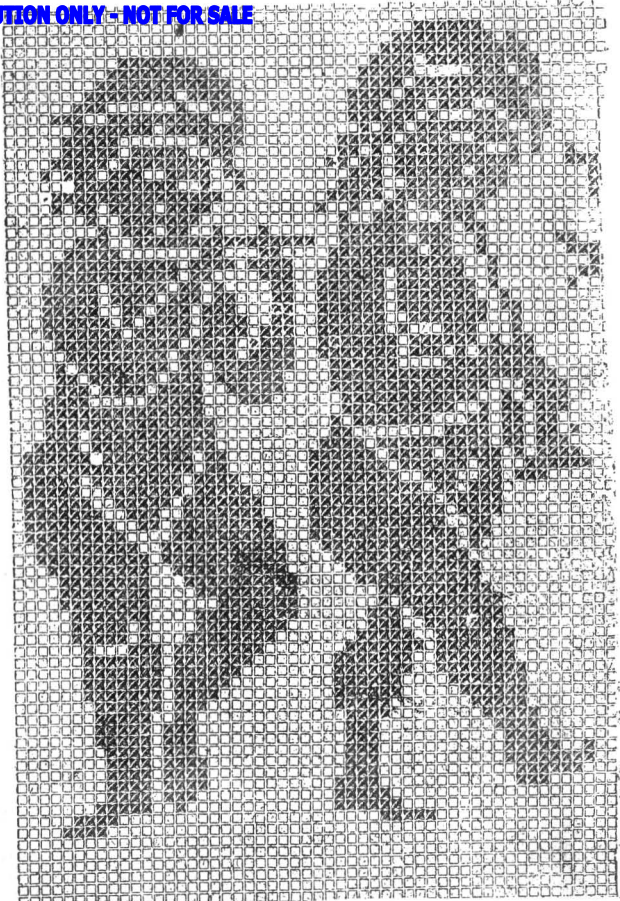
5th Row—Same as third.

6th Row—Skip two stitches and crochet shell of six stitches.

Make six rows same way, then increase by putting ten crochet in every second shell. In the next row there will be two shells over every shell in which there are ten stitches. Make six more rows and finish last row with picot edge.

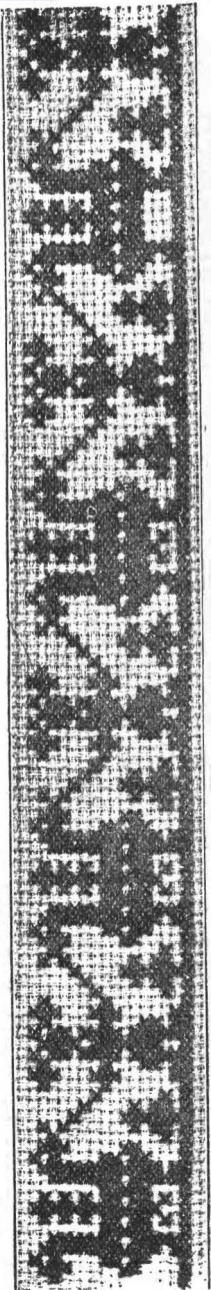


Farbenerklärung: □ Schwarz, ■ Rot, X Grün, □ Weiß, ■ Blau.

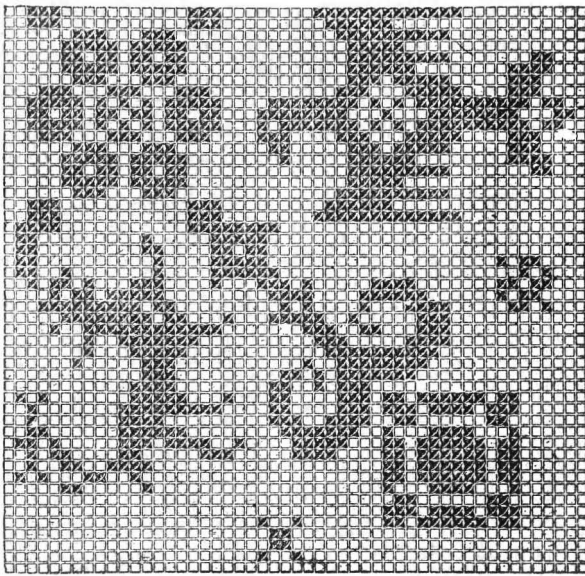
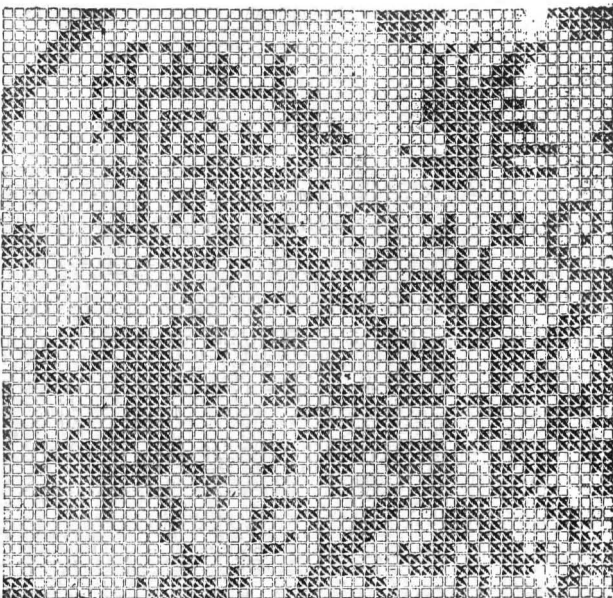


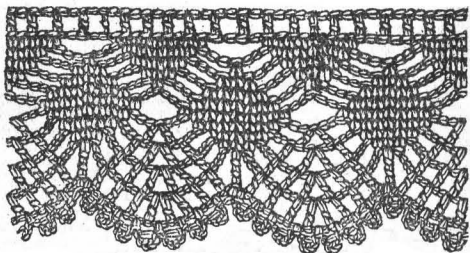
Nr. 44. Typenmuster zu Abb. 58. Farbenerklär.: ■ Dunkelblau, □ Mittelblau, ▨ Hellmittelblau, ◻ Hellblau.



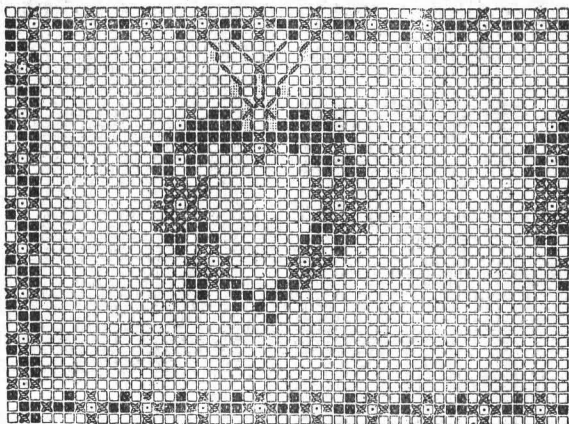


Alte russische Kante mit stilisiertem Motiv

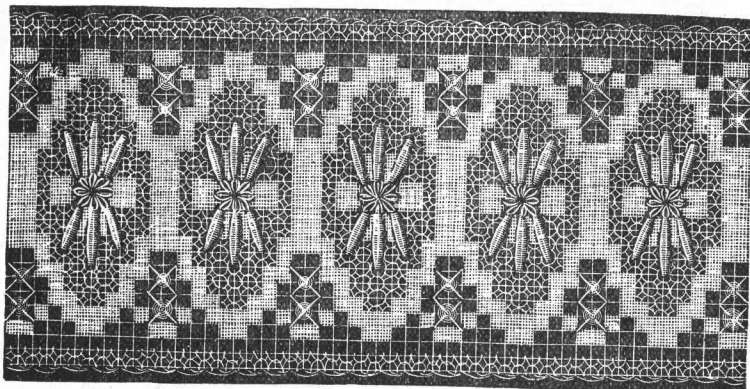




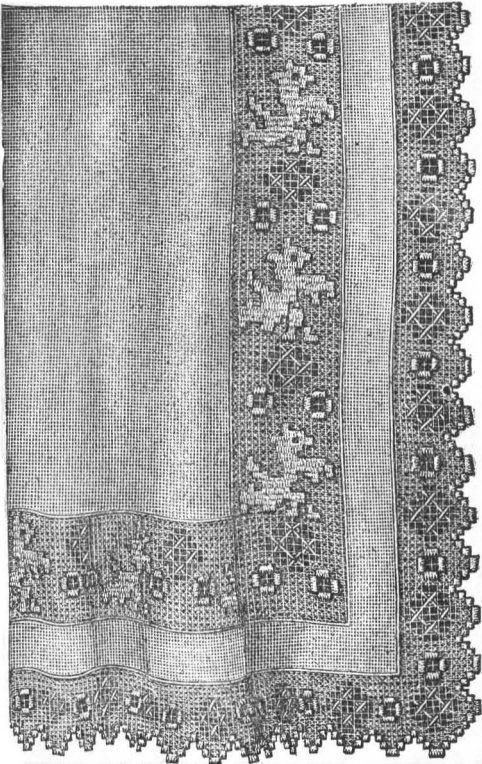
Nr 5. Spitze. Häfelarbeit



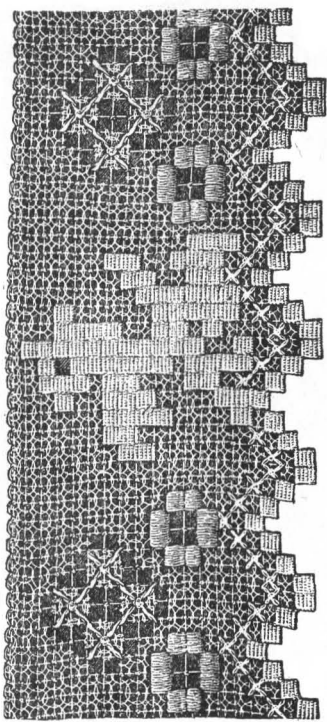
Erklärung der Zeichen: ■■ Grün, X X Blau, ◻◻ Gelb, ◻◻ Fond.



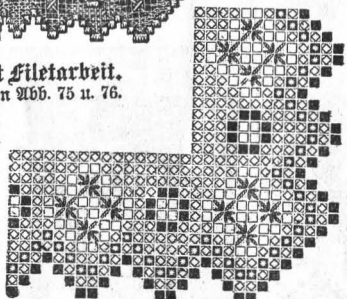
Nr. 102. Einsatz in Häfelarbeit, verwendbar zur Verzierung von Wäschegegenständen, Kleidern etc.



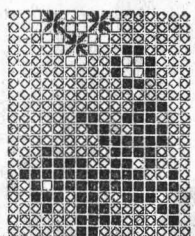
Nr. 69. Teil einer Gardine mit Filetarbeit.  
Sierzu Abb. 70, sowie Mustervorlagen Abb. 75 u. 76.



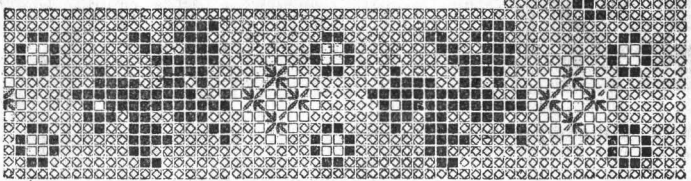
Nr. 70. Teil der Filetarbeit zur Gardine Abb. 69. Verfeinert.

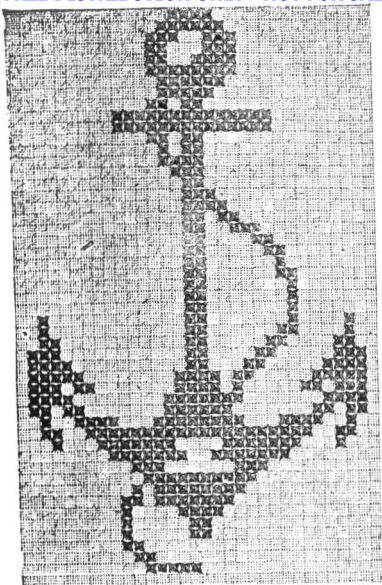


Nr. 76. Mustervorlage zur Gardine Abb. 69.

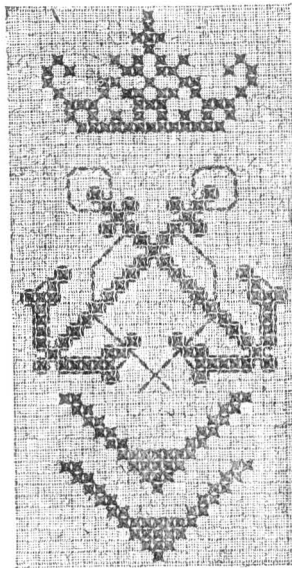


Nr. 75. Mustervorlage zur Gardine Abb. 69.

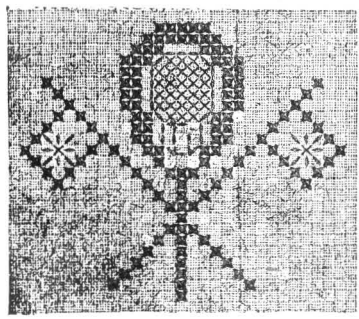




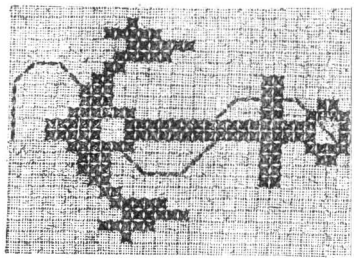
Nr. 14. Typenmuster für Kreuz- und Strichstickerei. Marine-Emblem für Kinderkleider.



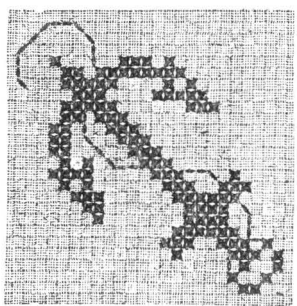
Nr. 15. Typenmuster für Kreuz- und Strichstickerei. Marine-Emblem für Kinderkleider.



Nr. 13. Typenmuster für Kreuz und Strichstickerei. Marine-Emblem für Kinderkleider.



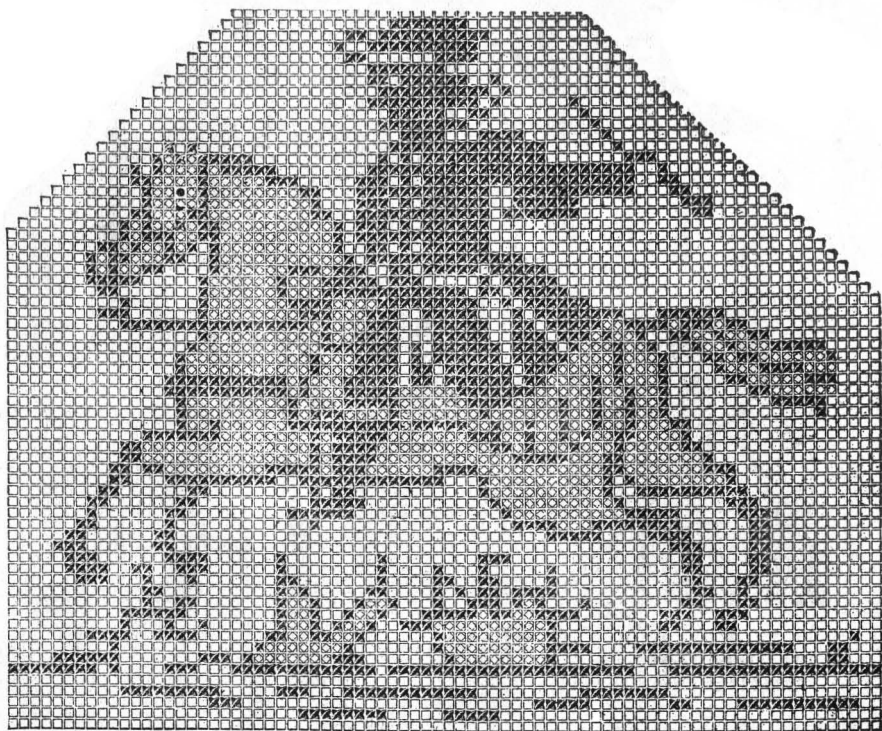
Nr. 16. Typenmuster für Kreuz- und Strichstickerei. Marine-Emblem für Kinderkleider.

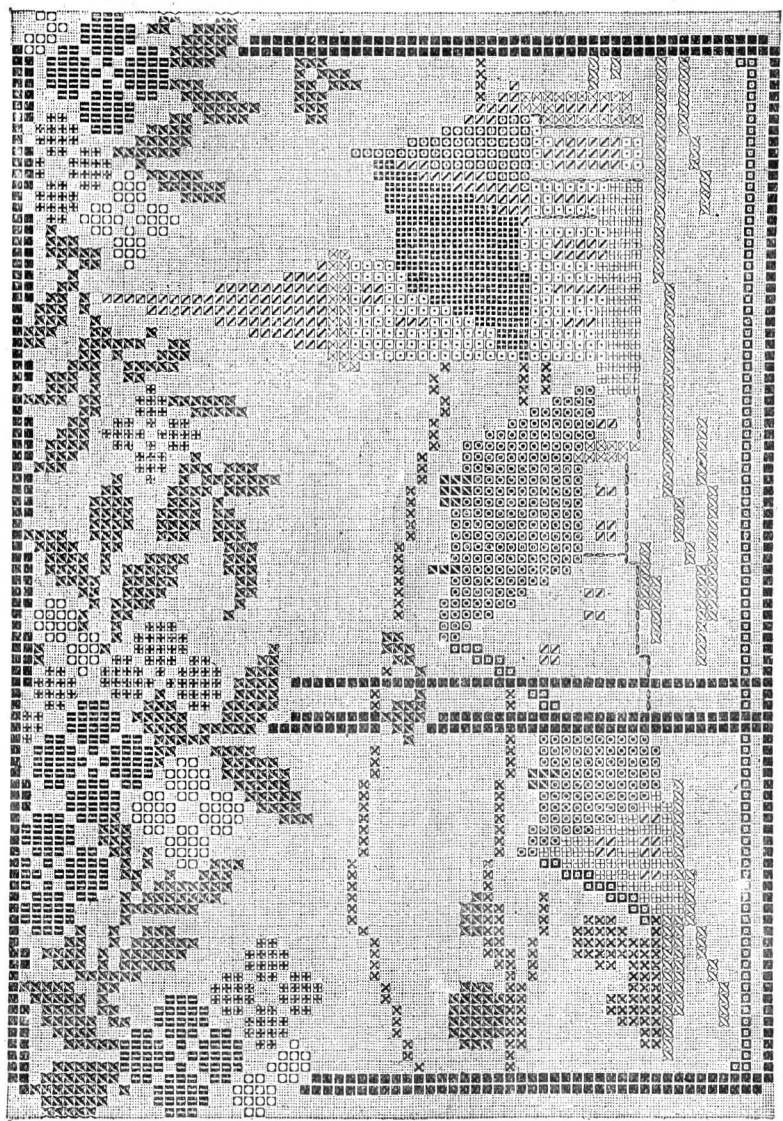


Nr. 17. Typenmuster für Kreuz- und Strichstickerei. Marine-Emblem für Kinderkleider.

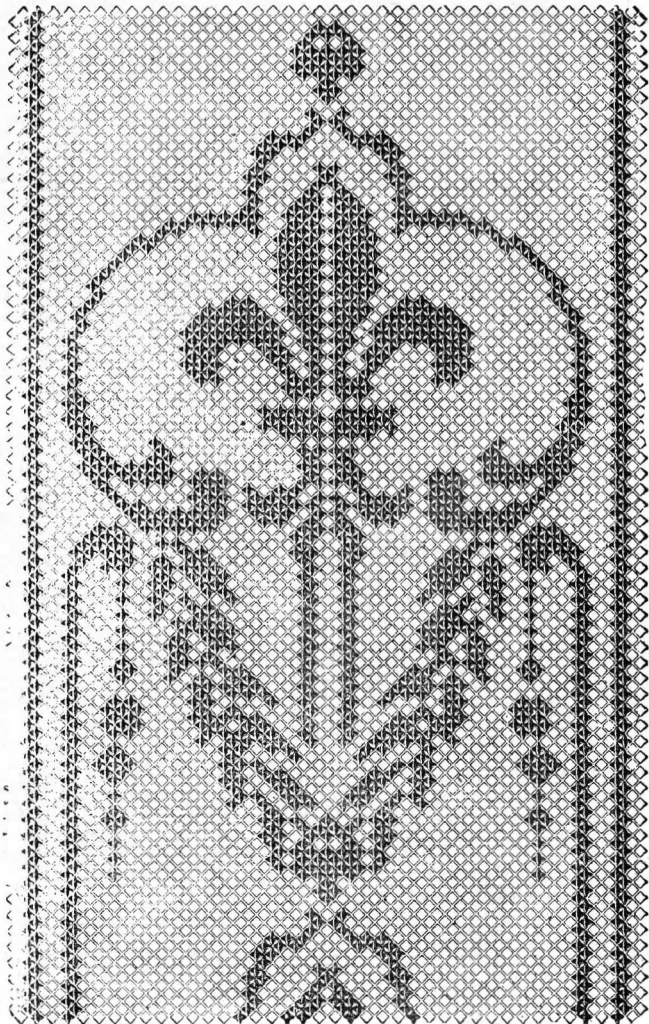
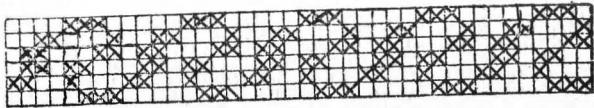


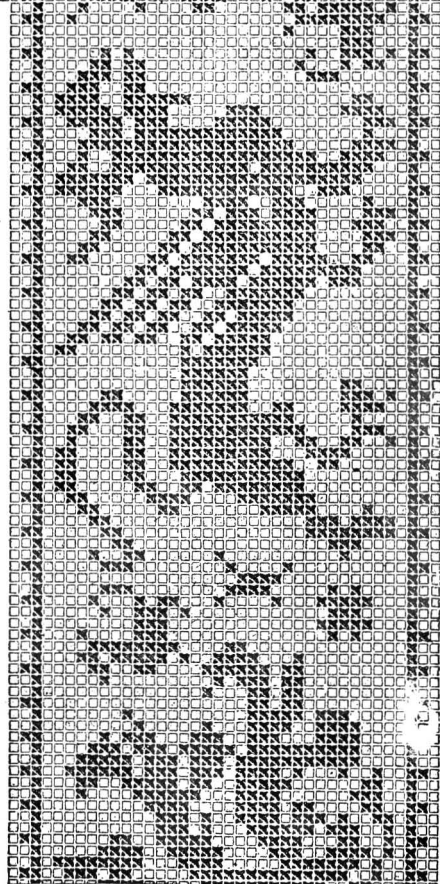
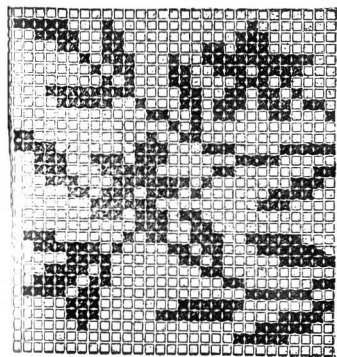
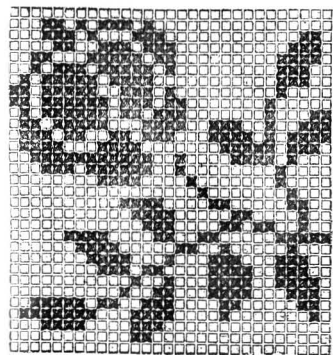
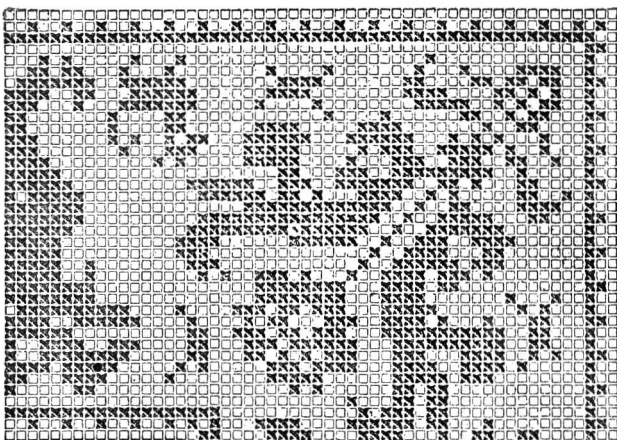
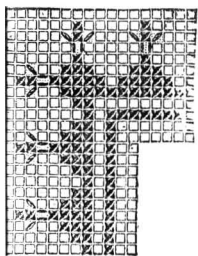
Nr. 46. Hofakiffen. Kreuz- und Holbeinsticherei.  
 Hierzu Nr. 34.



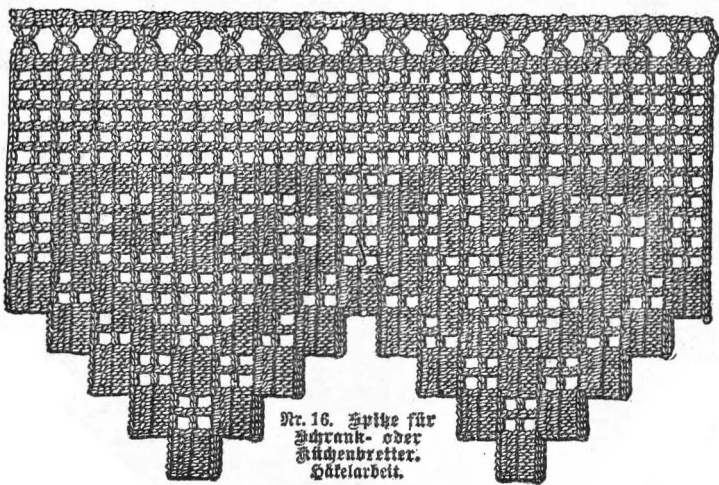
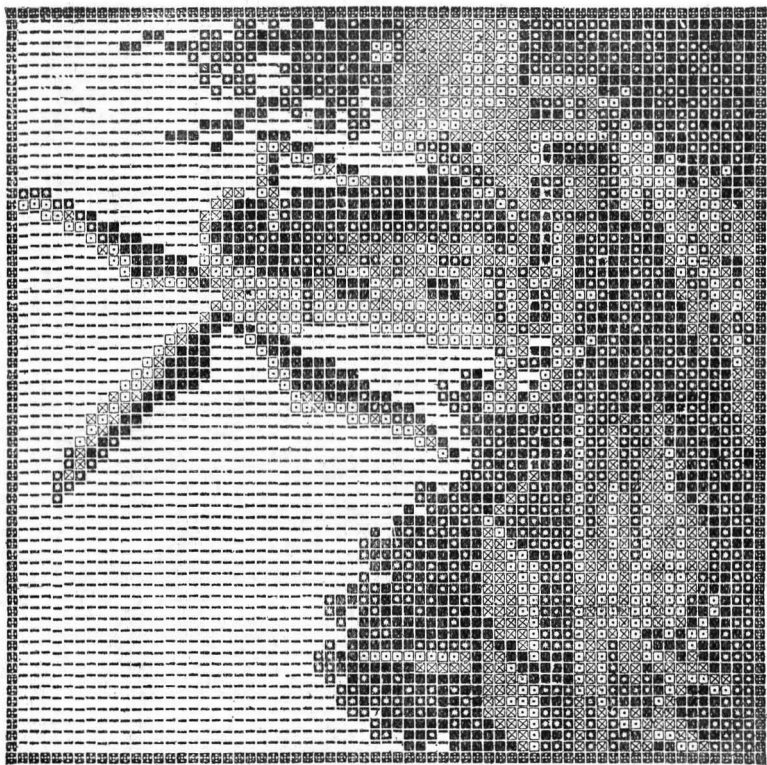


Nr. 34. Musteranlage zum Riffen Nr. 48. Farbanweisung: ■ Dunkelbraun, □ Mittelbraun, ■ Hellbraun, ■ Mohe, □ Geltnobe,  
 ■ Dunkelblaugrün, ■ Mittelblaugrün, ■ Hellblaugrün, ■ Hellrot, ■ Dunkelrot, ■ Innerhalb des mittleren Bandes: Gelblichweiß,  
 ■ Dunkelgrün, ■ Hellgrün, ■ Hellviolett, ■ Dunkelviolett, ■ Gelblichweiß, ■ Schwache Goldfäden.

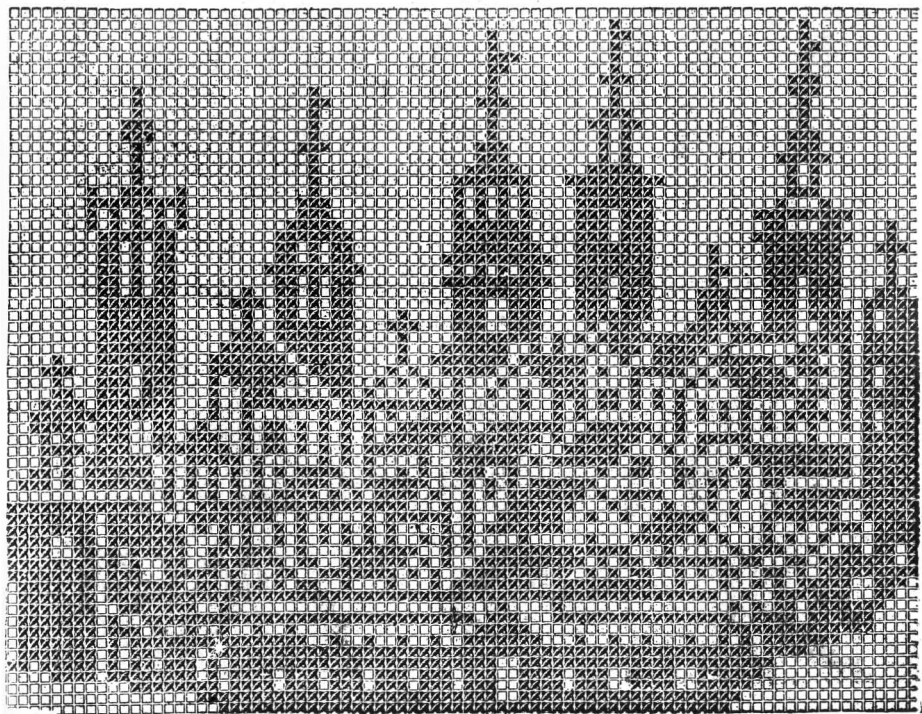
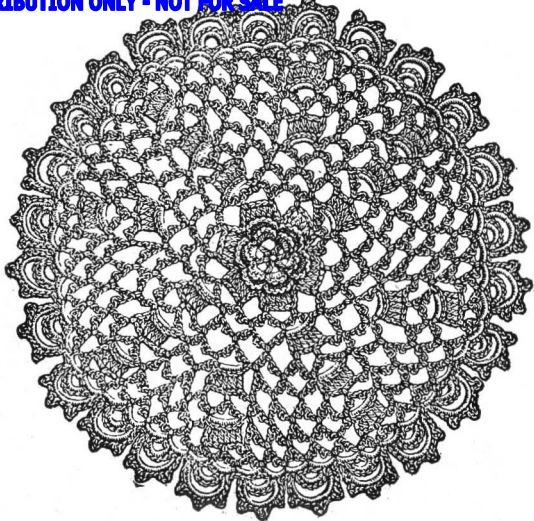


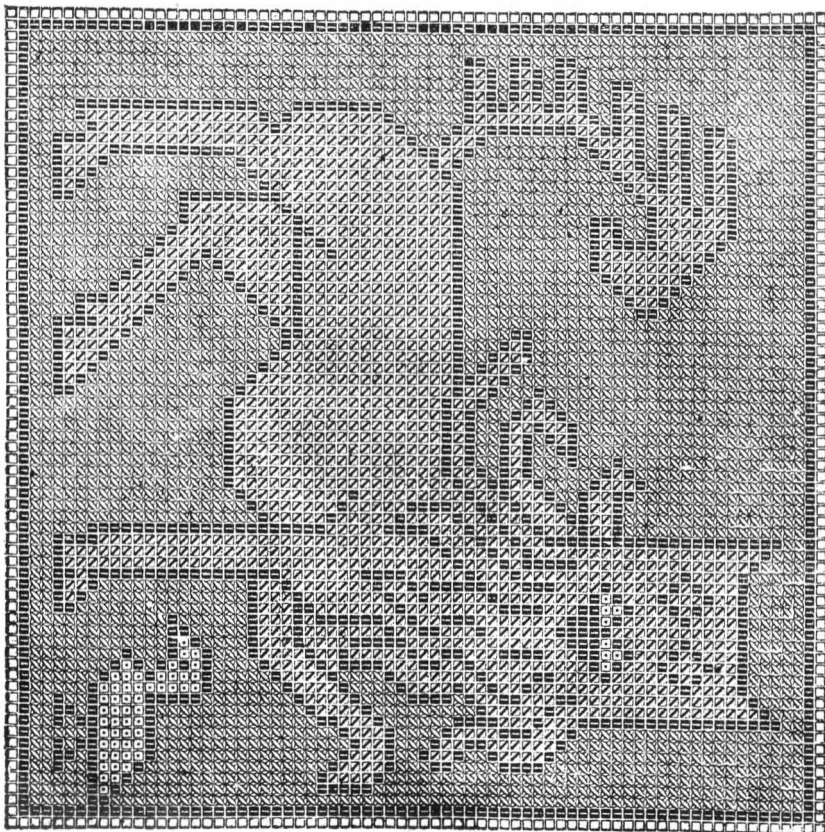




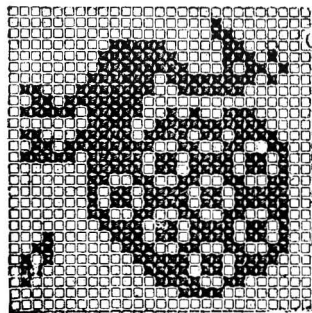
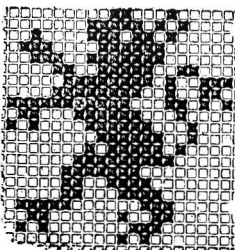
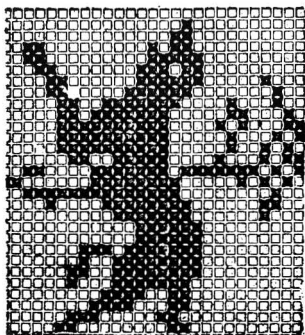


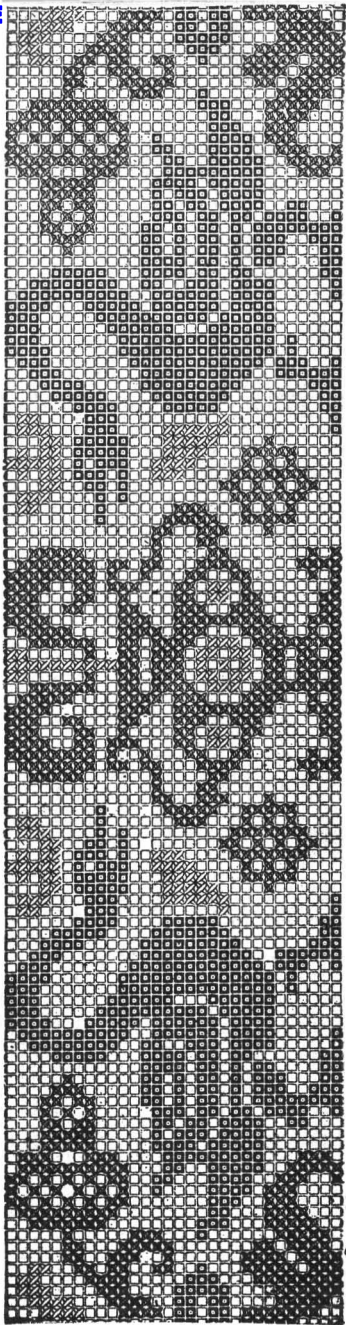
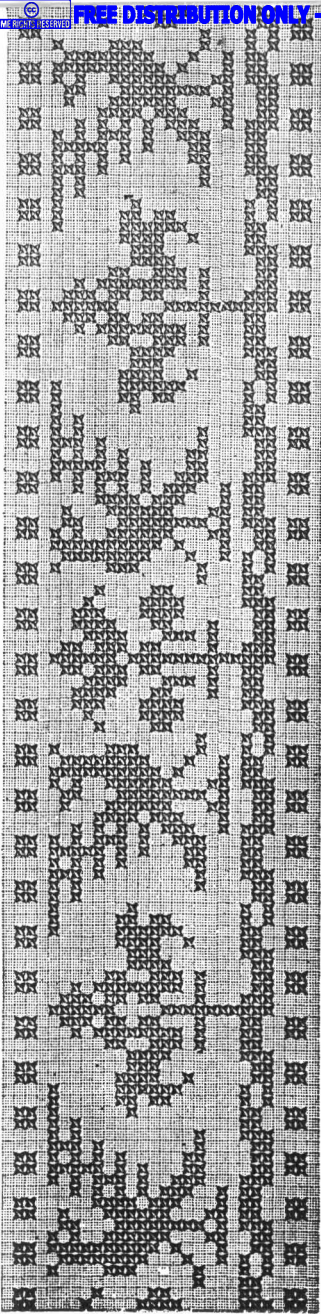
Nr. 16. Spitze für  
Stuhlrück- oder  
Rückenbretter.  
Häkelarbeit.



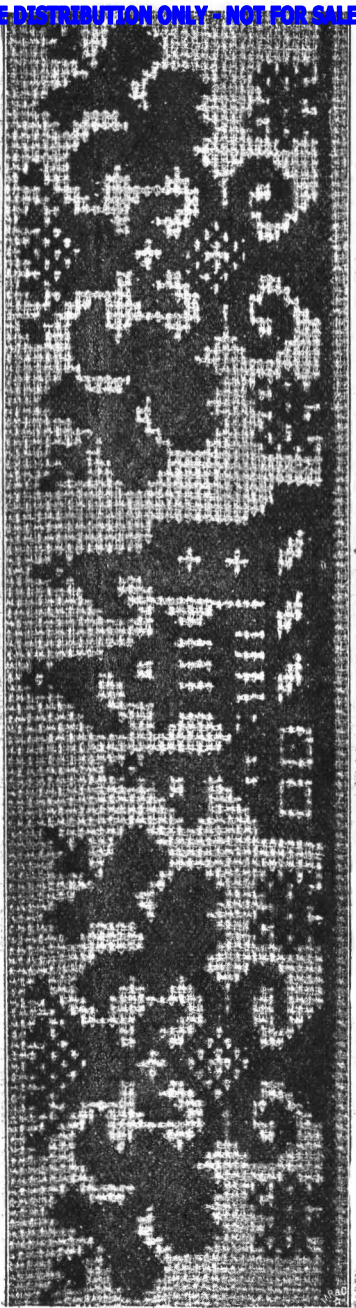


Farbenerklärung: ■ Rot, ■ Dunkelblau, □ Hellgelb, ■ Grün.

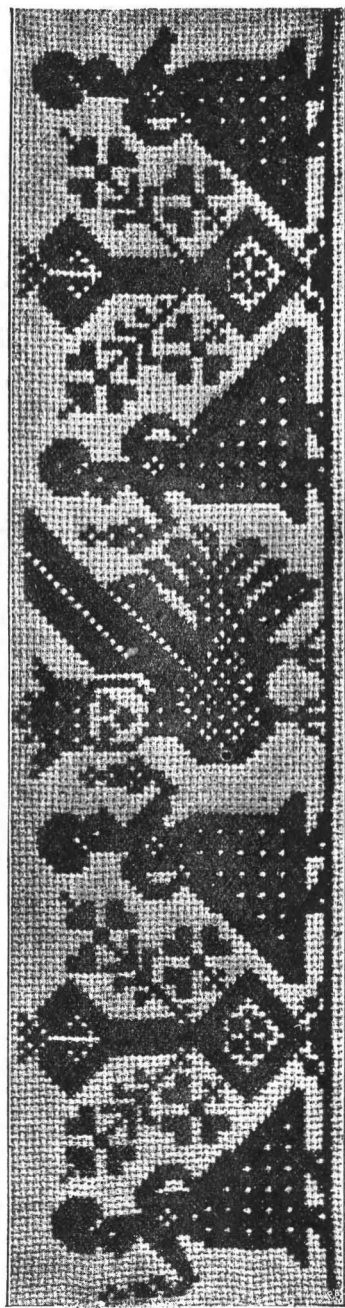




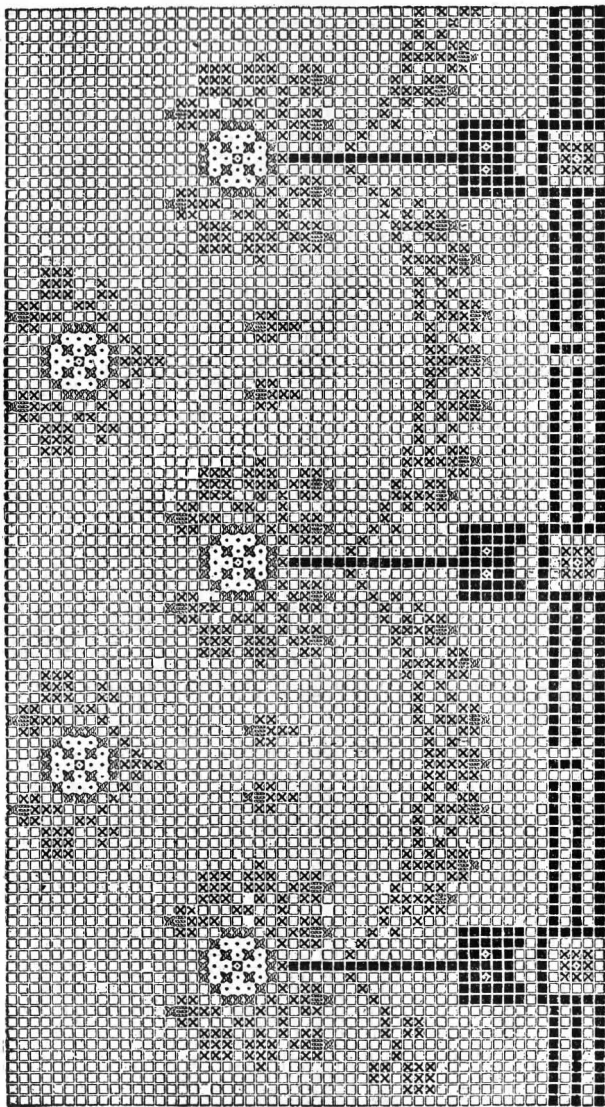
Erklärung der Zeichen: ■ Rotbraun, ✕ Olive, ▨ Bronzegebl, □ Foud.



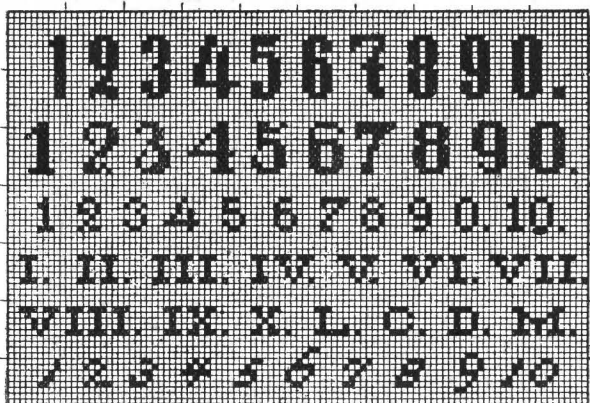
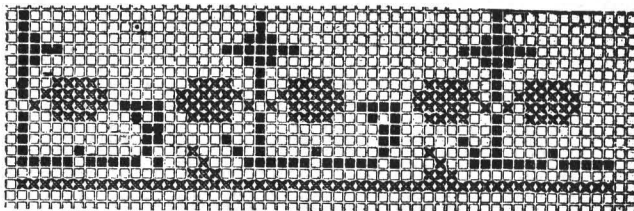
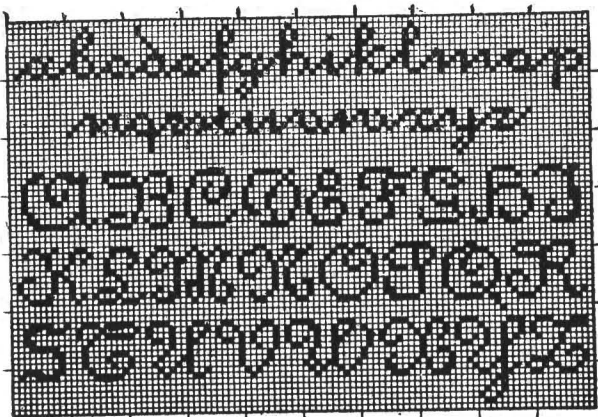
Alte russische Kreuzstichkante mit Kirchenmotto.

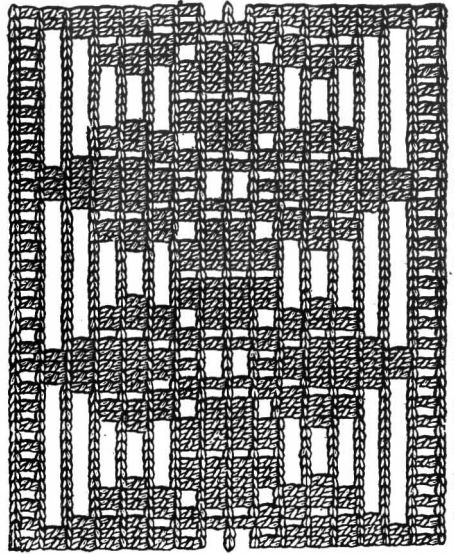
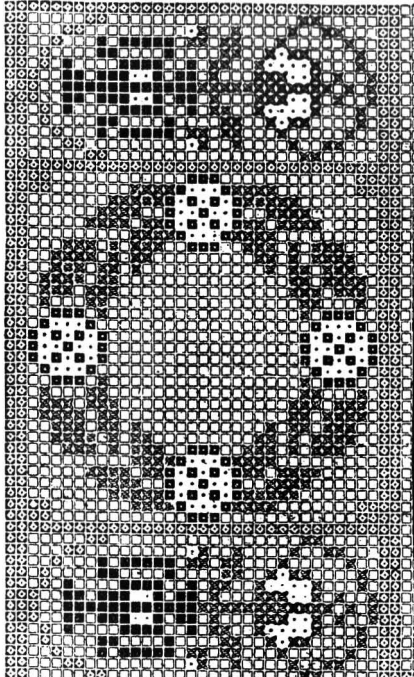
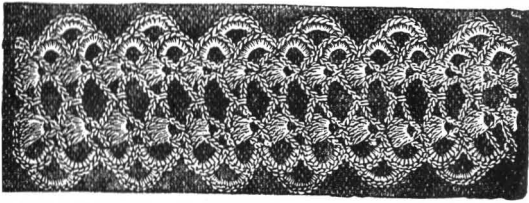


Sehr alte russische Kante mit symbolischen Figuren.

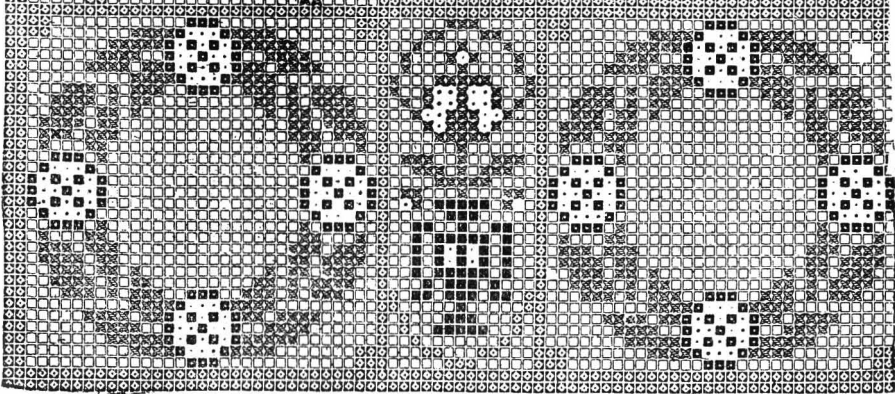


Erläuterung der Zeichen: **ss** Grün. **■** Bronzebraun. **oo** Goldgelb. **ww** Dunkelrot. **xx** Dunkelrot. **..** Dunkelrot. **□** Hellrot. **□** Gold.  
**Nr. 104.** Mustervorlage für eine Bordüre in Kreuzstichmethode zu Denken, Säulen etc.

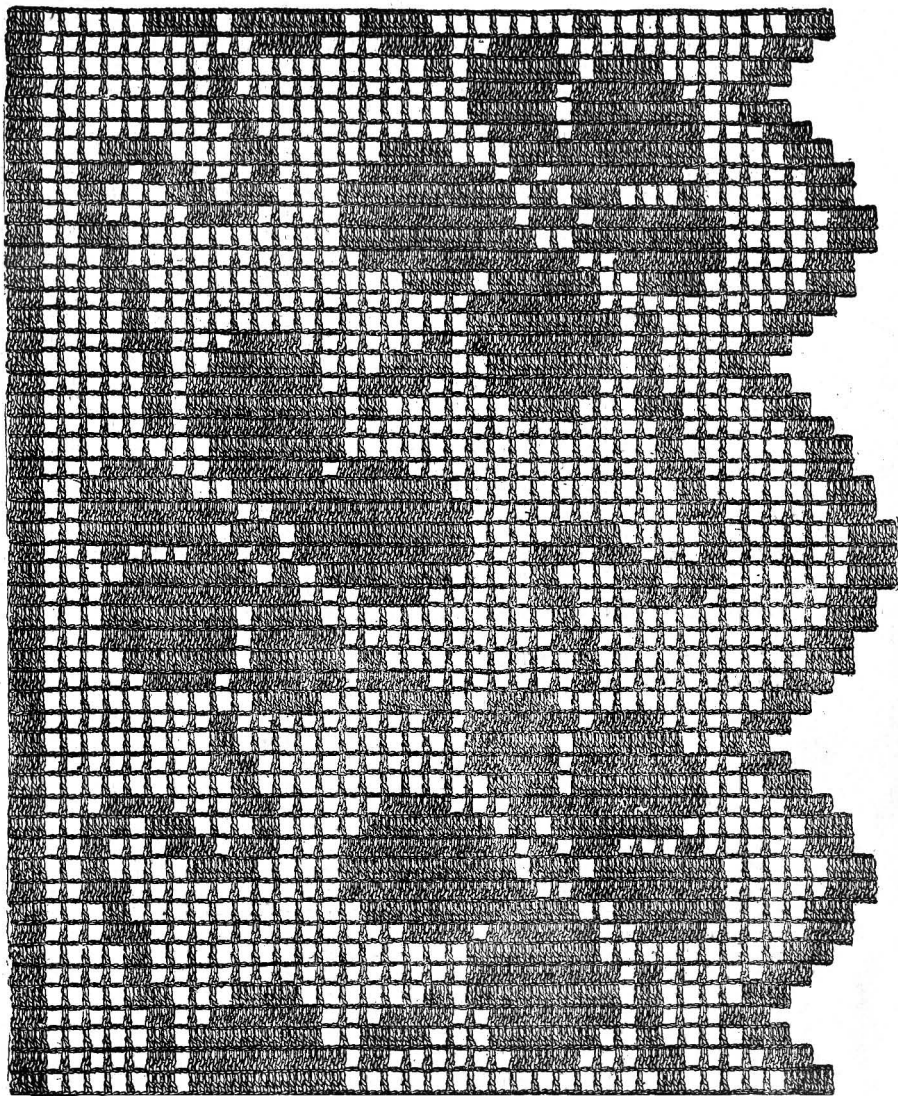


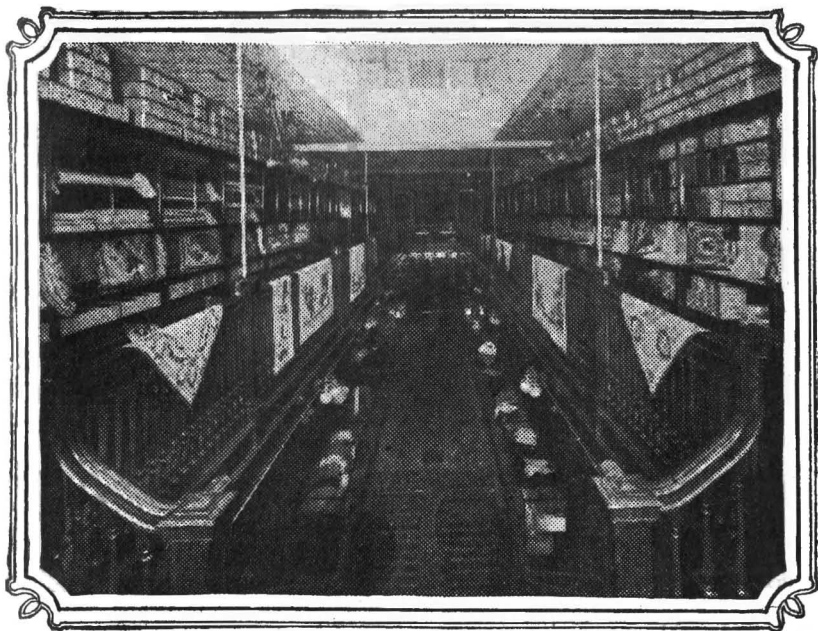


Pl. 16. Zwischenfah (verwendbar für Gürtel). Späterzeitl.









VIEW FROM THE BALCONY

Entire Balcony 100 feet long, devoted to

## **Woolen, Worsted and Cotton Knitting Yarns**

**Needlework Tapestries, Canvases, Art Embroidery Materials**

**Household and Decorative Stamped Linens and European Novelties**

# **HENRY HESSE**

IMPORTER

**Sixth Ave., No. 399**

**Bet. 24th and 25th Sts.**

(West Side)

NEW YORK CITY

The New Home of  
**HENRY  
 HESSE**  
 Sixth Avenue  
 No. 399

Between 24th and 25th Sts.

NEW YORK CITY

Entire Main Floor Devoted to

Fine Worsted  
Hand and Machine  
Made Knit Goods

Of Every Description.

Hosiery and Knit  
Underwear

For Men, Women and Children  
 In Complete Assortment

Mens' Furnishings

Complete in Every Detail



Established 1858 at 308-308 1/2 Grand Street, Cor. Allen