

The Antique Pattern Library

For more information, please see our website at:

<http://www.antiquepatternlibrary.org>



This is a scan of an antique book that is, to the best of our knowledge, in the public domain. The scan itself has been photo-edited for readability, and is licensed under the **Creative Commons** Attribution-NonCommercial-ShareAlike License. To view a copy of this license, visit <http://creativecommons.org/licenses/by-nc-sa/2.5/> or send a letter to Creative Commons, 559 Nathan Abbott Way, Stanford, California 94305, USA.

You may share copies or printouts of this scan freely. You may not sell copies or printouts.

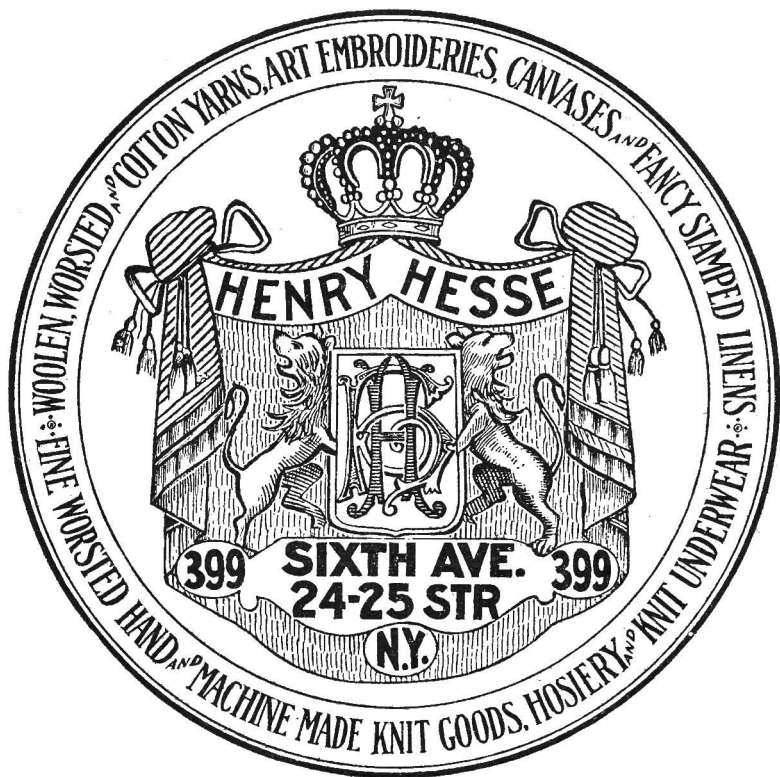
Donated by

Luann Pfost

11/2010

Art Needle Work

No. 7



Established 1858 at 308-308½ Grand St., Cor. Allen

HENRY HESSE

SIXTH AVE. No. 399

Bet. 24th=25th Sts., New York City
WEST SIDE

Here with greatly expanded and improved facilities
in a modern building of unusual completeness

Established 1858 at 308-308½ Grand St., Cor. Allen St.

HENRY HESSE

399 Sixth Avenue

Bet. 24th and 25th Sts., New York

IMPORTER

Woolen, Worsted and Cotton Knitting Yarns

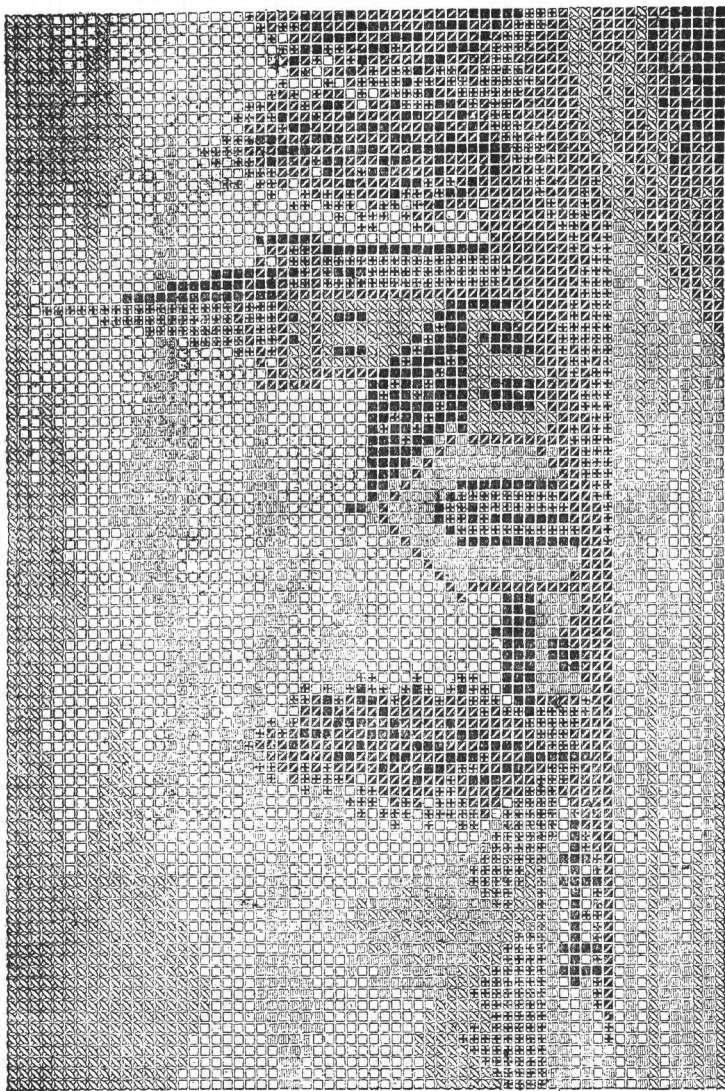
Fine Worsted Hand and Machine Made Knit Goods

Hosiery and Knit Underwear

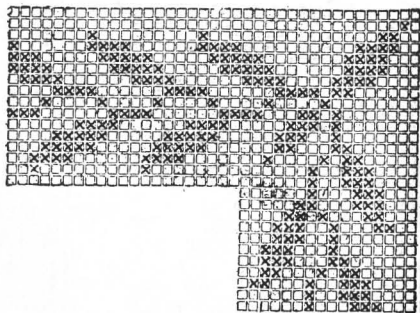
Needlework Tapestries, Canvases, Art Embroidery Materials

Household and Decorative Stamped Linens and European Novelties

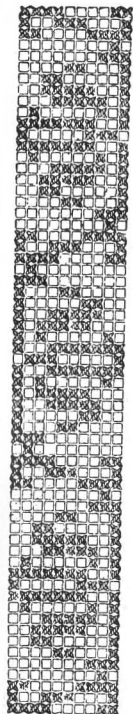
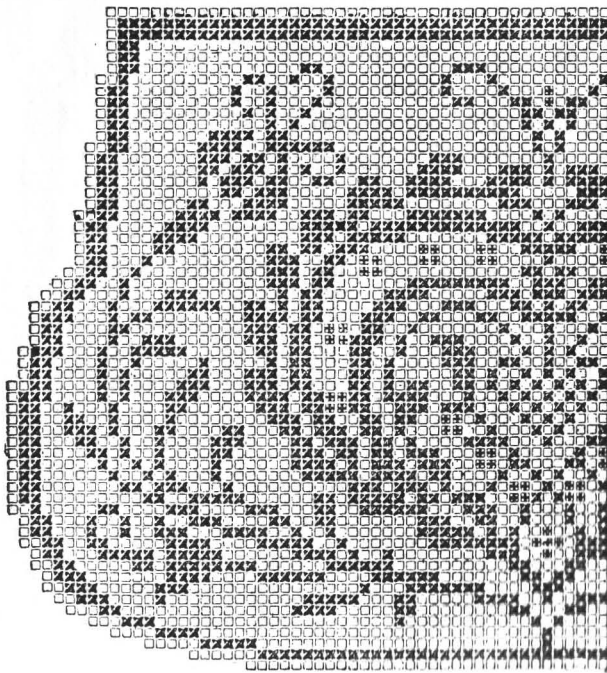
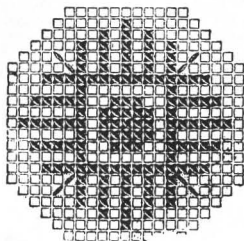
A cordial invitation is extended to all



Nr. 7. *Wasservorlage zum Wandbild Nr. 7*
 Gardenerklärung: ■ Dunkelblau, □ 1. Mittelblau, ■ 2. Mittelblau, ■ Hellblau, □ Hellstes Blau, □ weißer Grundstoff.



Nr 2 Mustervorlage
mit Gebildung für
eine Kreuzstichbordüre



Nr. 27 Mustervorlage zum Handtäschchen Nr. 4.



The
Greatest

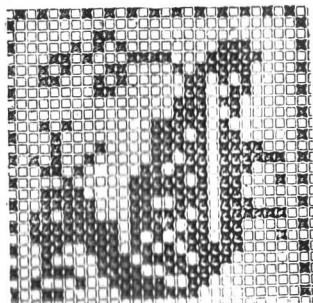
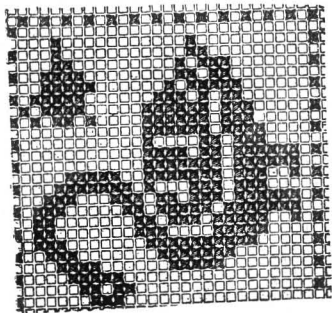
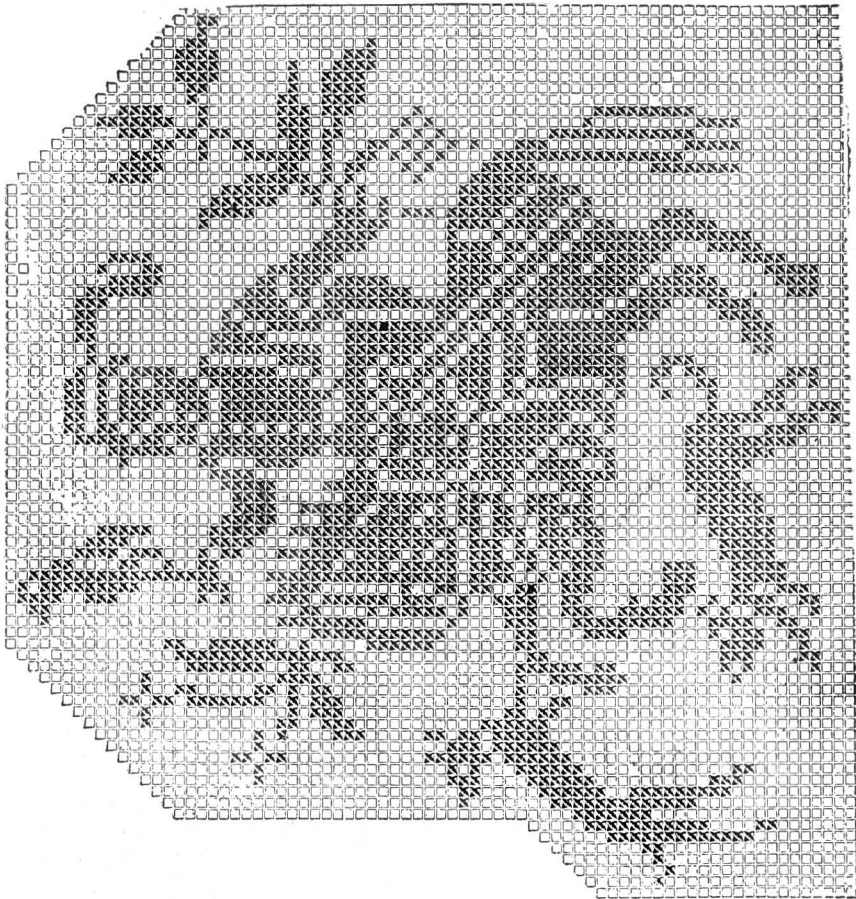
**Art
Needlework
Book**

PUBLISHED.

600 PATTERNS of Cross Stitch
Alphabets, Borders and
Floral Designs. Crochet
Patterns, Gittertyl (Filet)
and Hardanger.

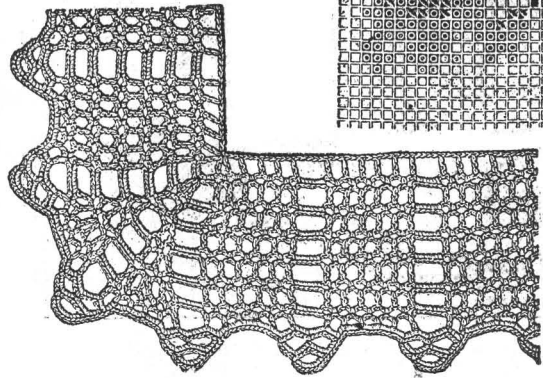
Price by Mail

25c.

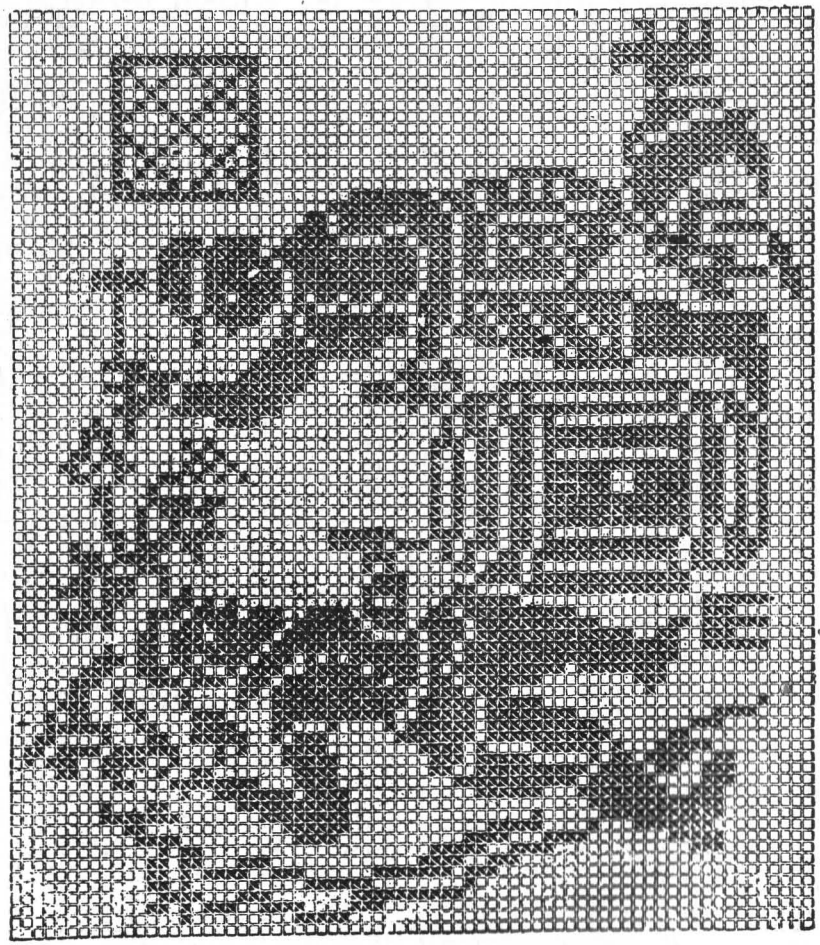
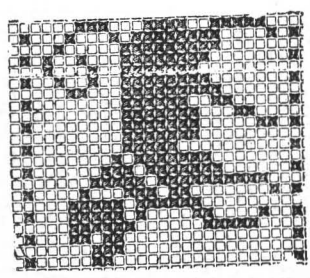
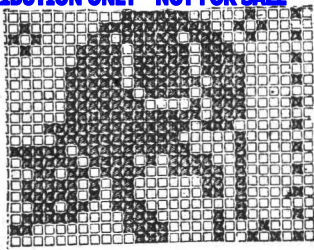


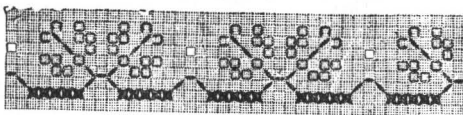
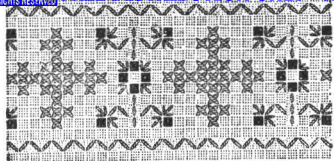


100 Braun. 101 Grün. 102 Blau. 103 Gelb. 104 Schwarz.

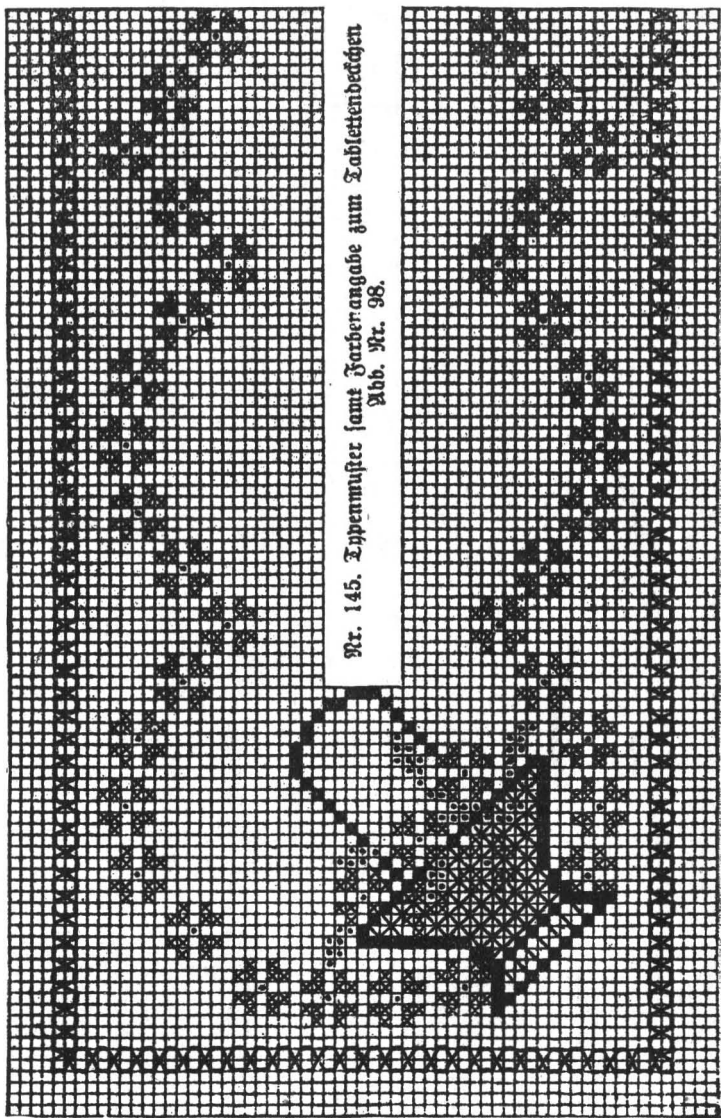


32.

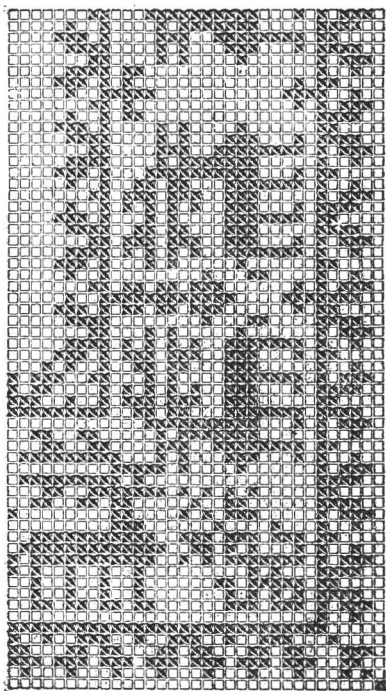
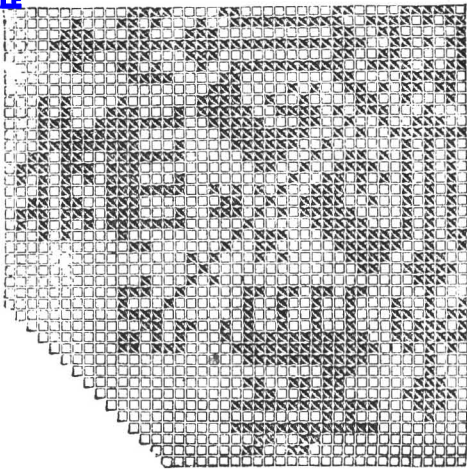
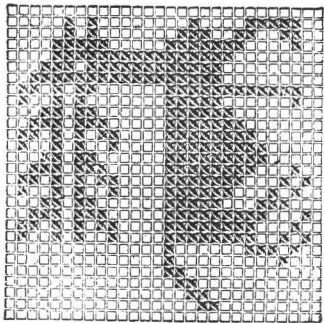




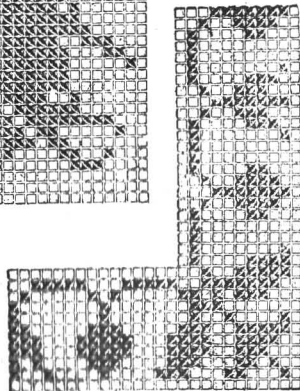
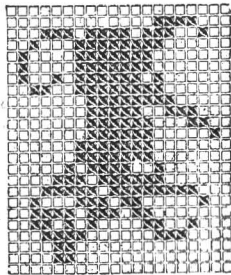
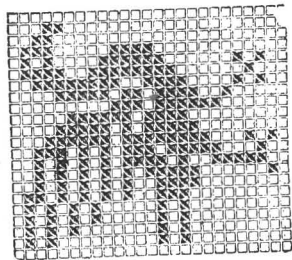
■ Schwarz. ◻ (Bitterstich) Naube. □ Goldfitter.



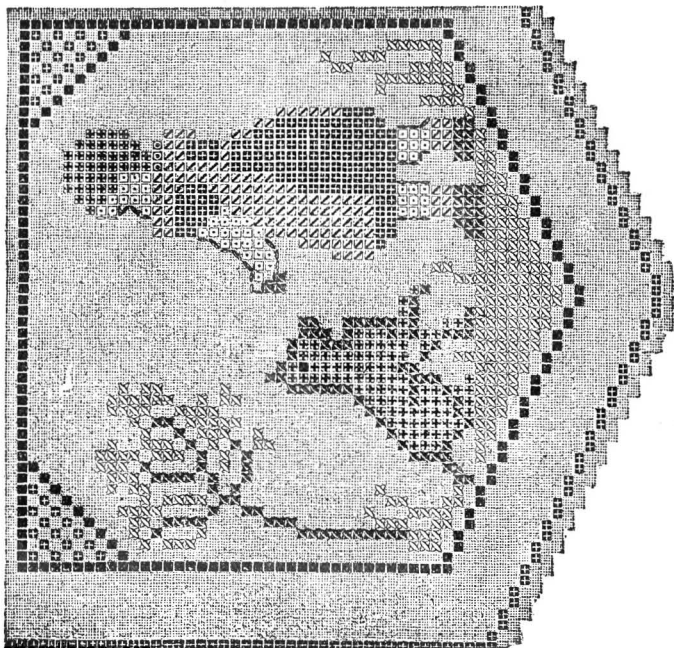
Nr. 145. Tapetenmuster samt Farberangabe zum Zablettendestochen
Abb. Nr. 98.



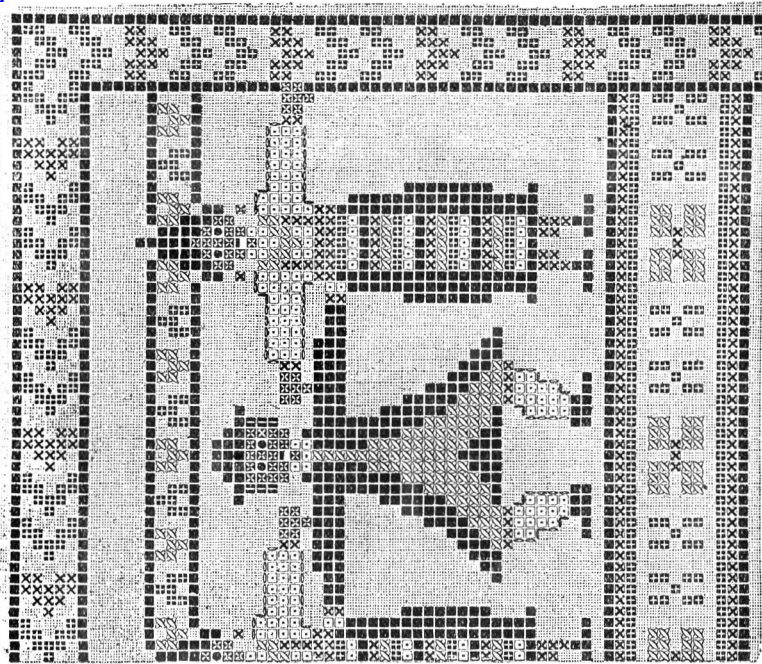
Pr. 25. Kreuzstämmer au Nr 89.

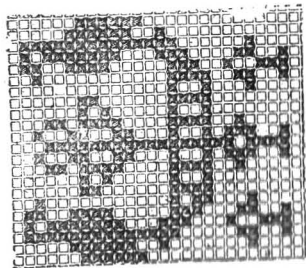
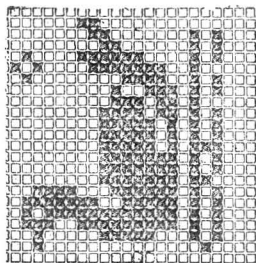
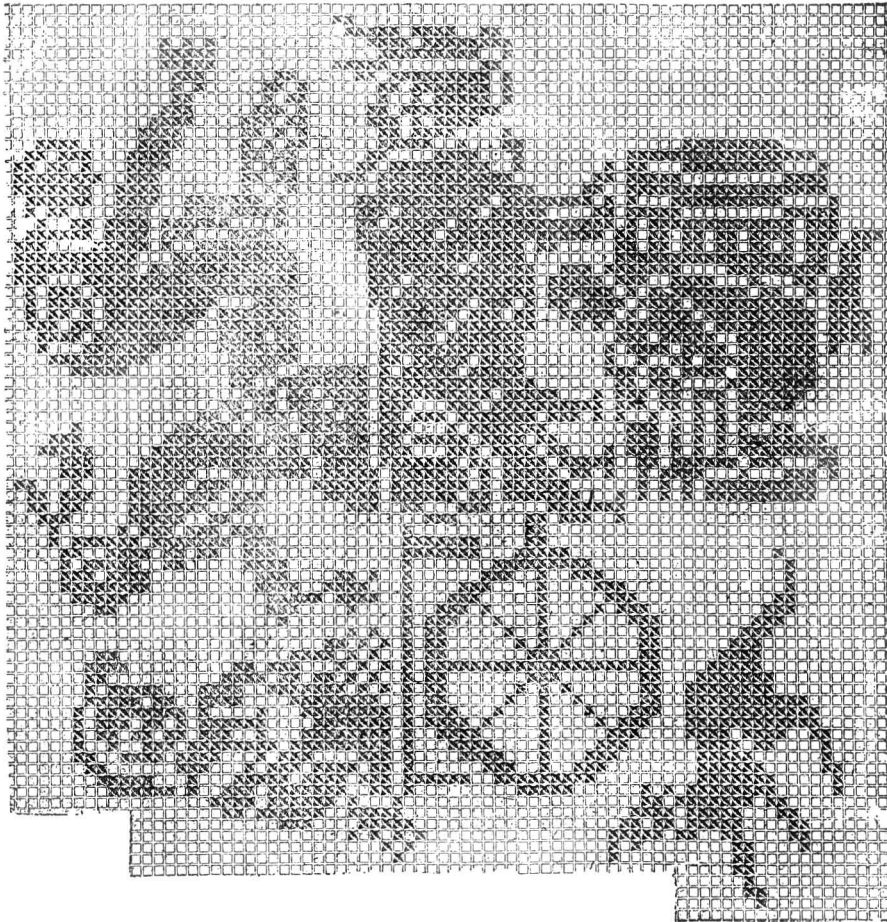


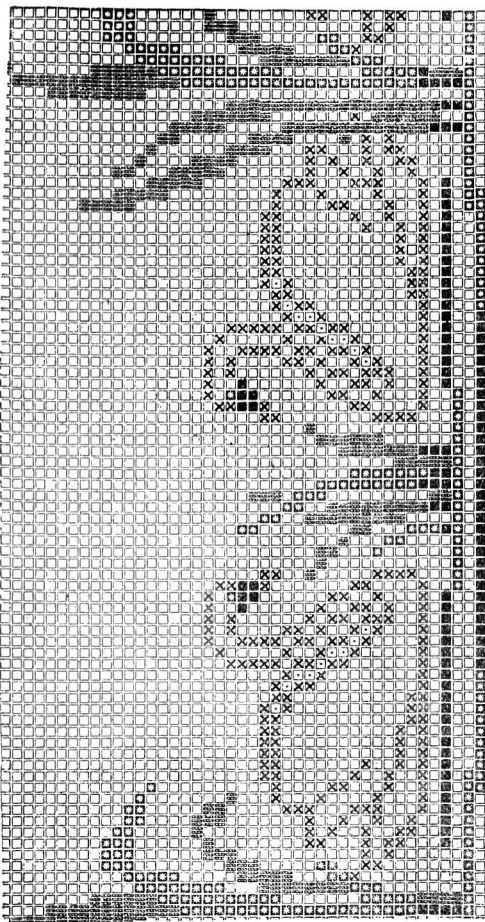
Farbenerklärung: ■ Rot, ■ Hellblau, ■ Schwarz, ■ Braun,
 ■ Grün, ■ Gelb, □ Rosa, ■ schwarze Stoffbetätigung.



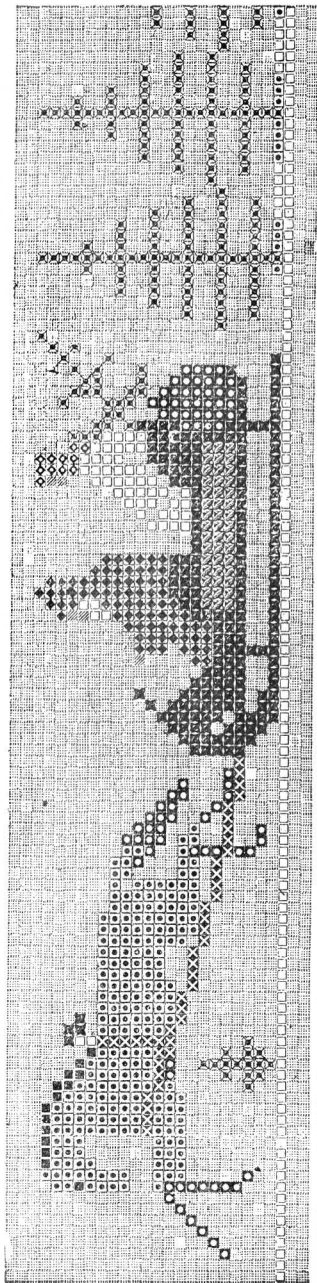
Nr. 24. Hühnerartige zum Wandspinner Nr. 6 Farbenerklärung: ■ Blau,
 ■ Gelb, ■ Weiß, ■ Schwarz, ■ Kupferrot, ■ Grün, ■ dunkelmode Stoffbetätigung.







Erklärung der Zeichen: ■ Schwarz, ■■ Dunkelgrün, □ Hellgrün, □ Weiß, □ Gelbgrün, □ Rotb.



□ Weiß, ■■ Gelbfarbe, ■■ Dunkelblau, ■■ Hellblau, ■■ Dunkelgrün, ■■ Ultrablau, ■■ Blaugrün, ■■ Dunkelblau, ■■ Hellbraun, ■■ Schwarz.

Kongress-Stoff
für
Gardinen,
Läufer, 
Decken
und
Schürzen.

Art Canvases

Suitable for fine Needlework in an
assortment not to be found elsewhere.

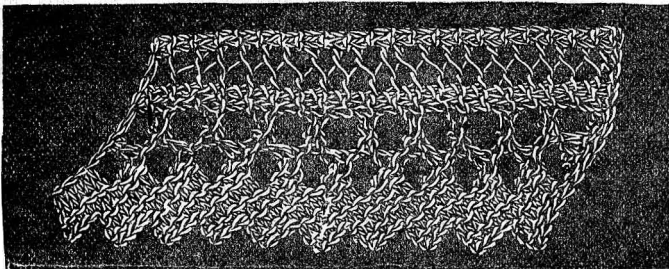


Also all 

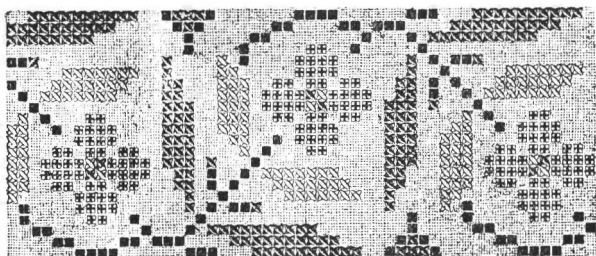
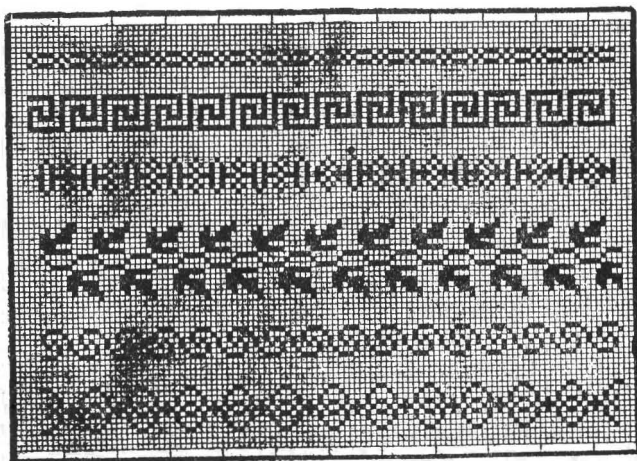
Art Materials

Used for fine Needlework in all its
branches.

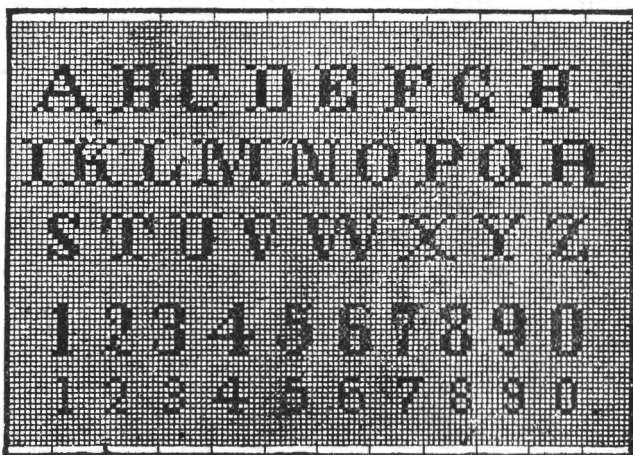


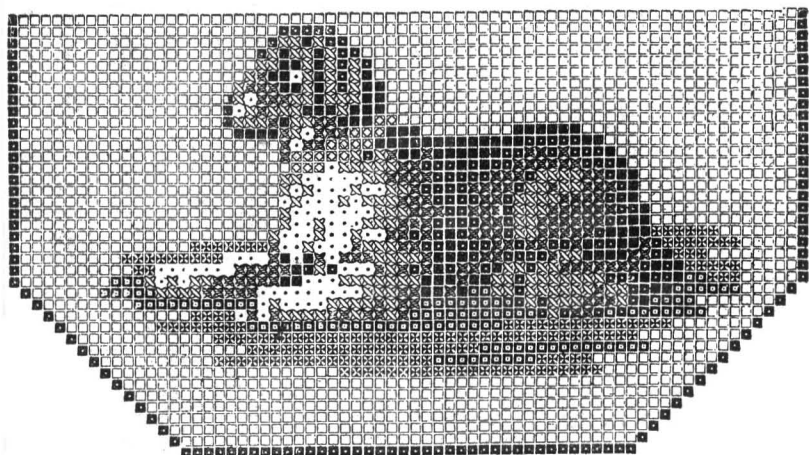


Rosebud Stripes for Antimacassar In Tricot and Cross Stitch.

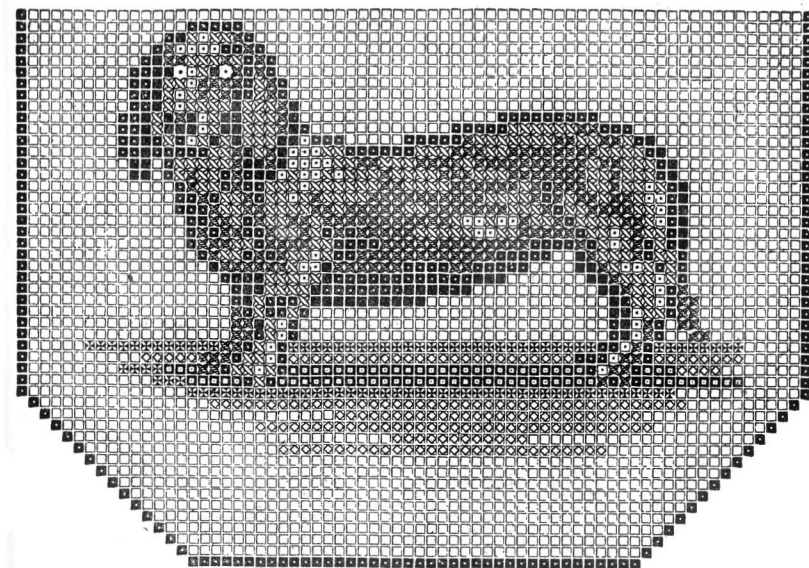


Nr. 1g. Mustervorlage zu einem Besatzstreifen zur Stufen,
 Schürzen u. a. Farbverklärung: ■ Dunkelgrün, ▨ Mittelgrün, ▩ Hell-
 grün, * Hellblau.

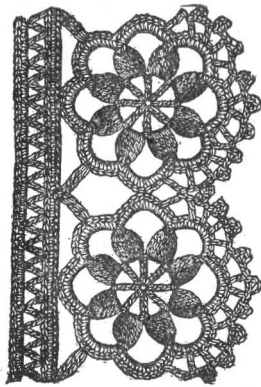




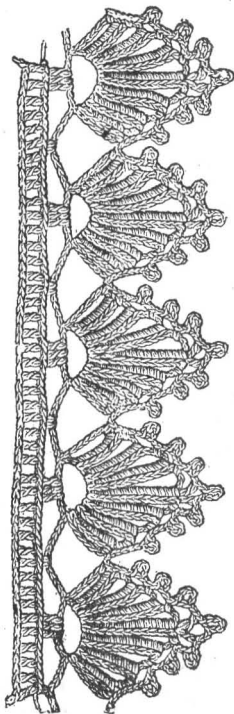
Erläuterung der Zeichen: ■■ Schwarz, ■□ erstes (dunkelstes), X□ zweites, XXX drittes (hellstes) Braun, ○□ Rot, ·· Weiß, □□ Dunkel, ■■ Hellgrün, □□ Fond.



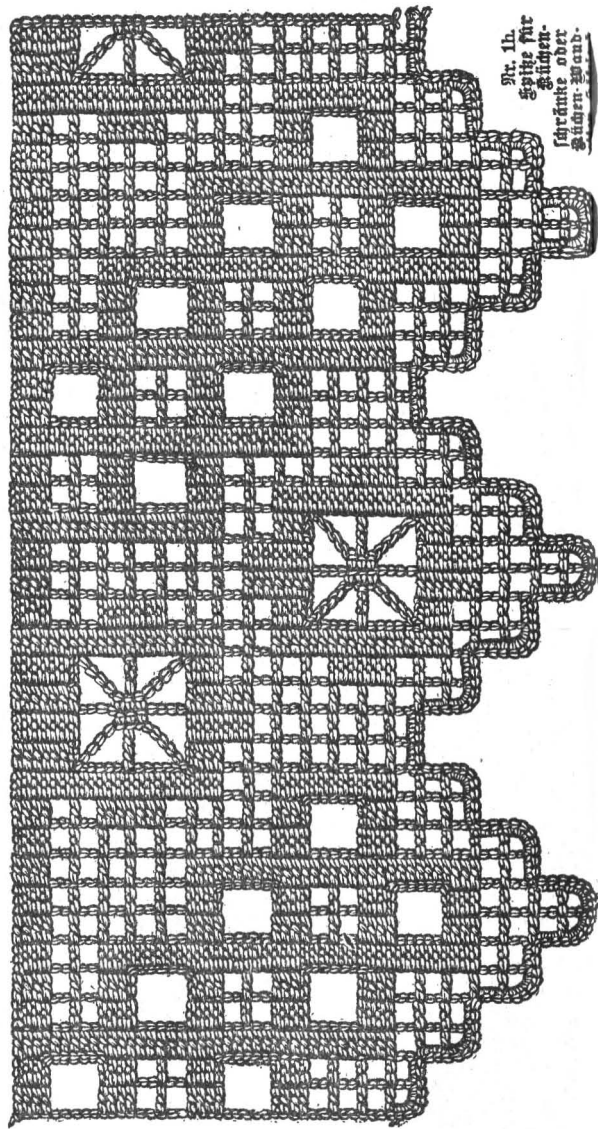
Erläuterung der Zeichen: ■■ Schwarz, ■□ erstes (dunkelstes), X□ zweites, XXX drittes, □□ viertes (hellstes) Braun, ·· Weiß, □□ erstes (dunkelstes), ■■ zweites, ○□ drittes (hellstes) Grün, □□ Fond.



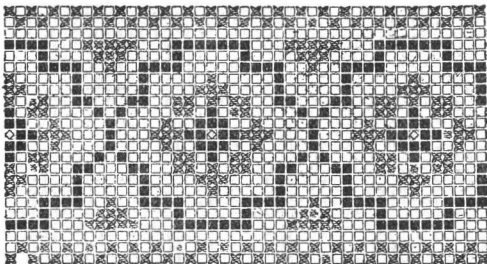
Nr. 1. Spitze, Säulearbeit.



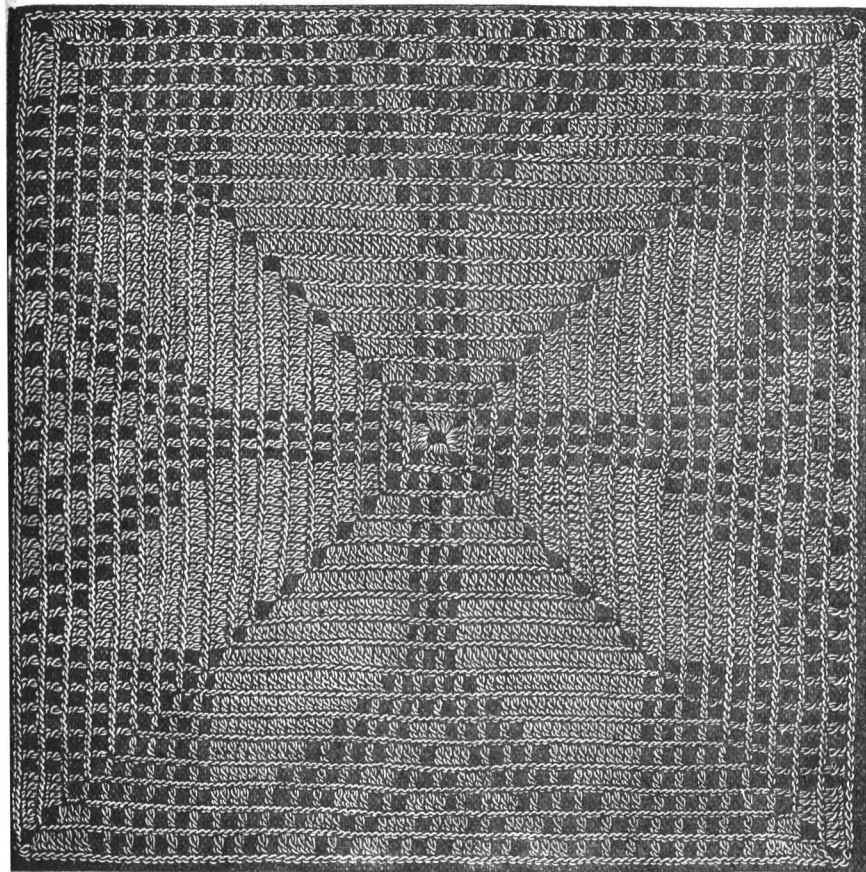
Nr. 63. Gehäkelte Spitze für Wäschegegenstände etc.



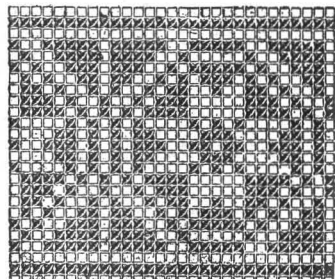
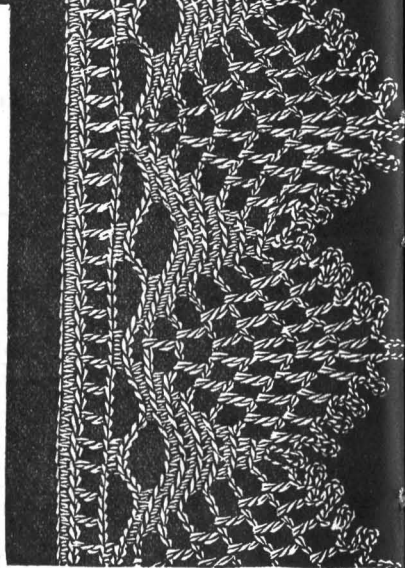
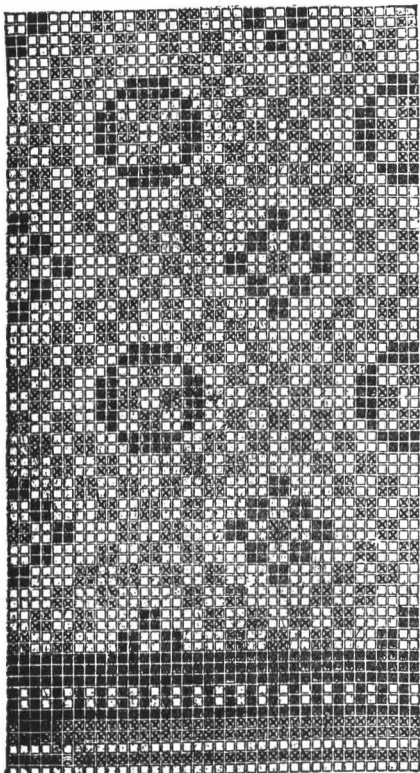
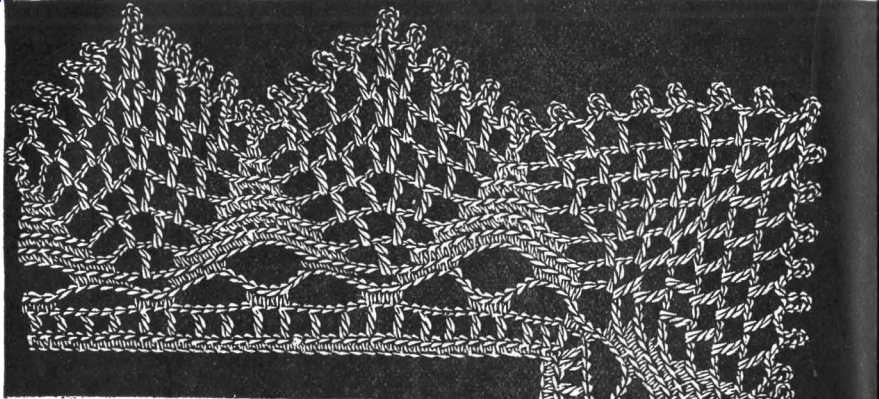
Nr. 1h. Spitze für Tischdecken oder Tischläufer. Wand.



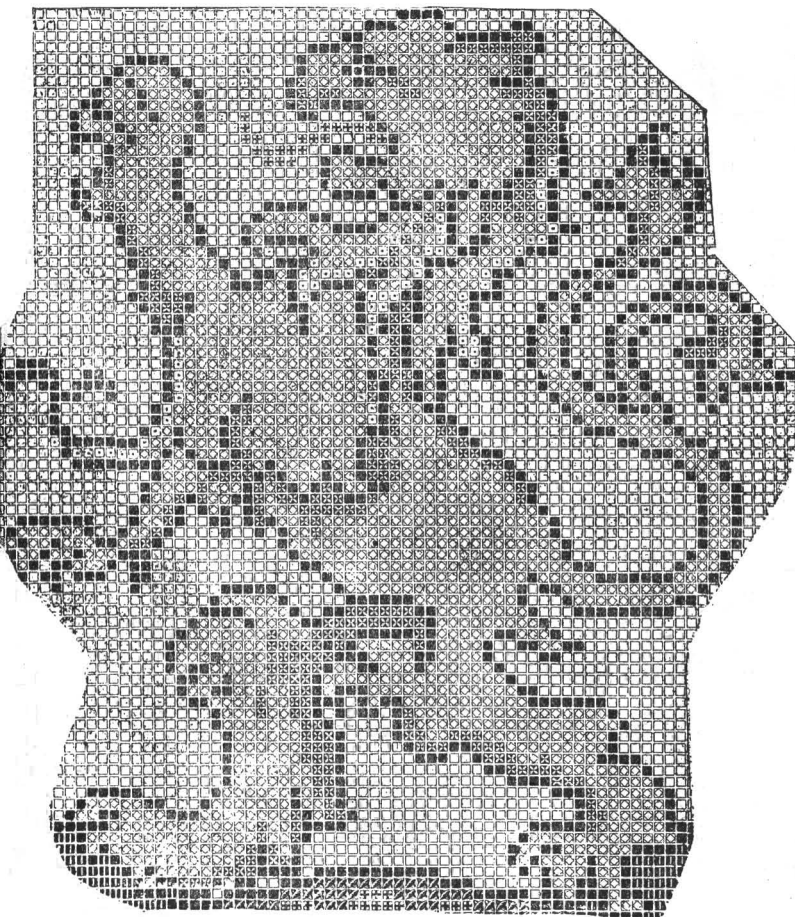
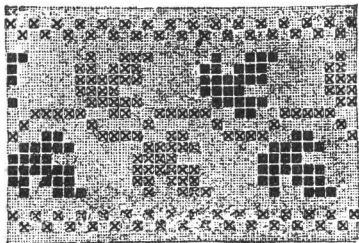
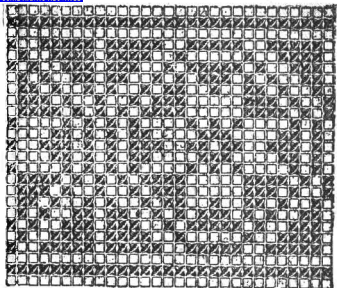
Erklärung der Zeichen: X Rot, X Gelb, ■ Blau, □ Fond
 Nr. 75. Mustervorlage für Kreuzstitcherei
 oder Fileldurchzug.

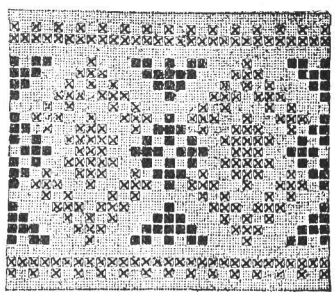
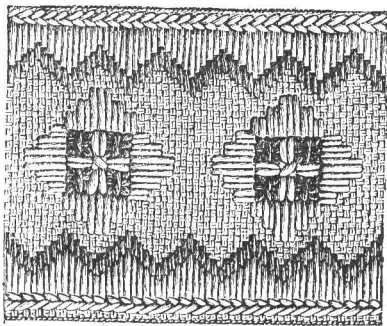


Arrow Pattern.—Square for a Quilt.

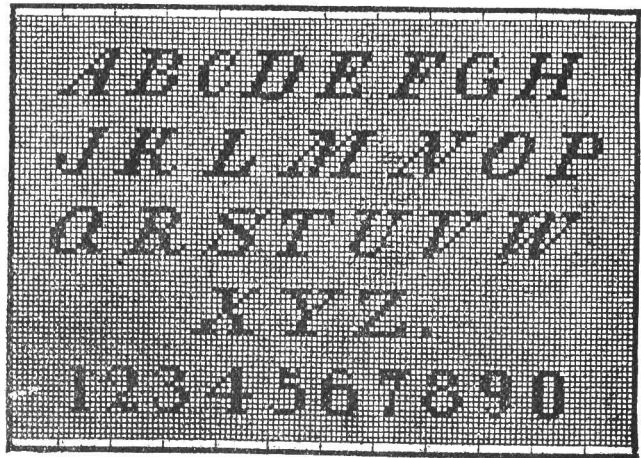


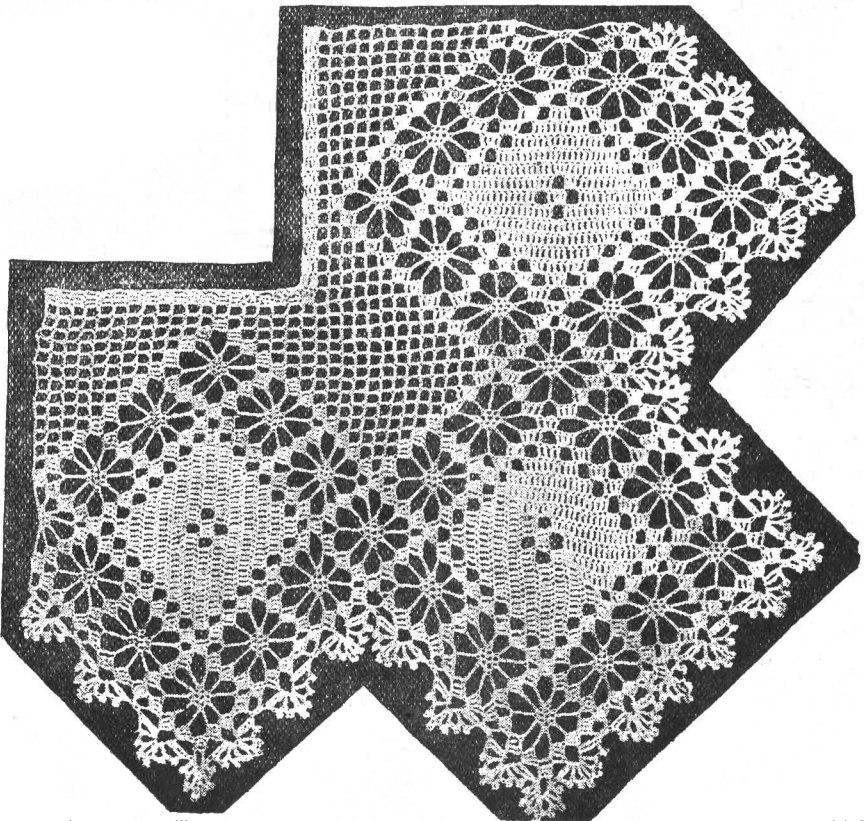
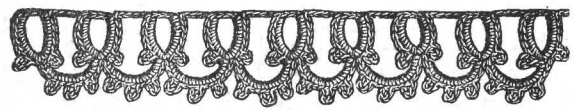
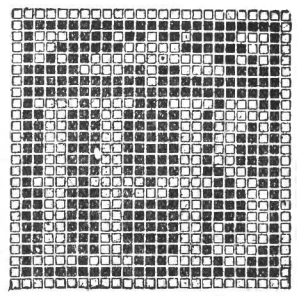
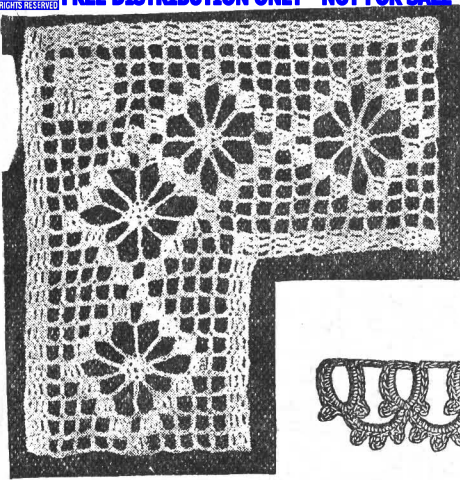
Nr. 11. Mustervorlage zum Vorhang Nr. 11: Farbeteil
 erklärung: ■ Dunkelblau, ■ Terrakottarot.

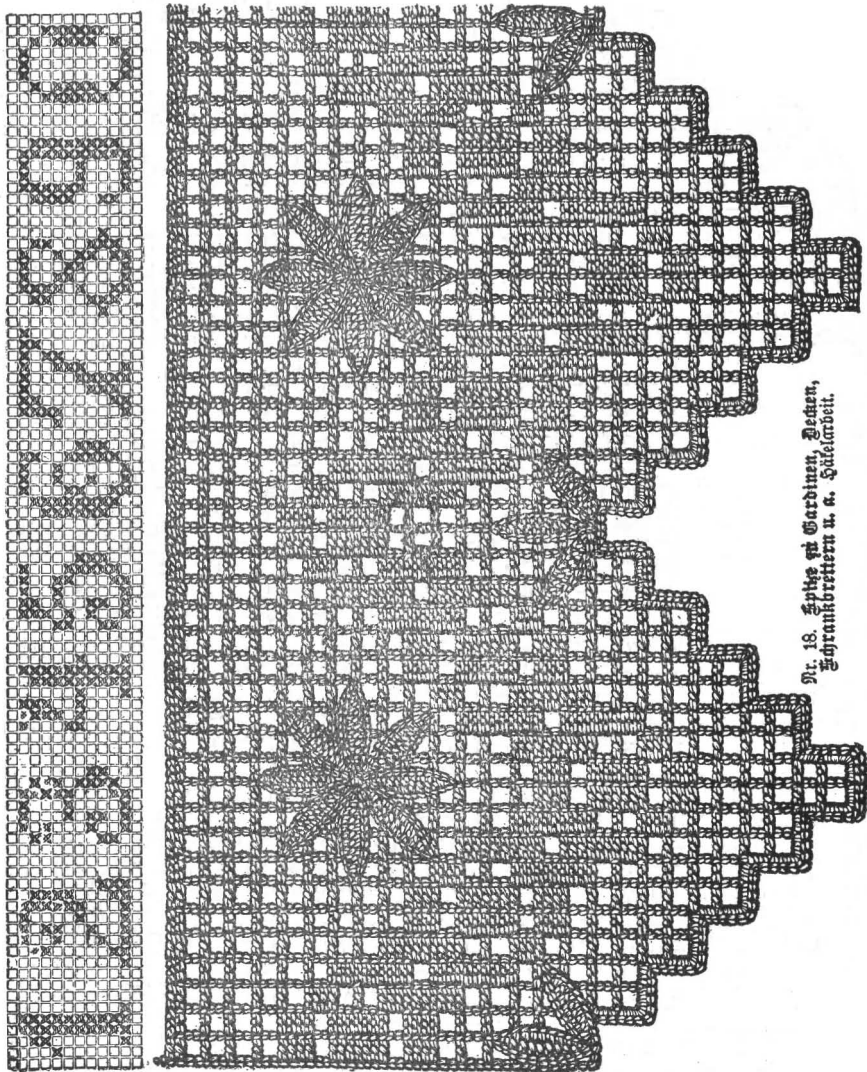




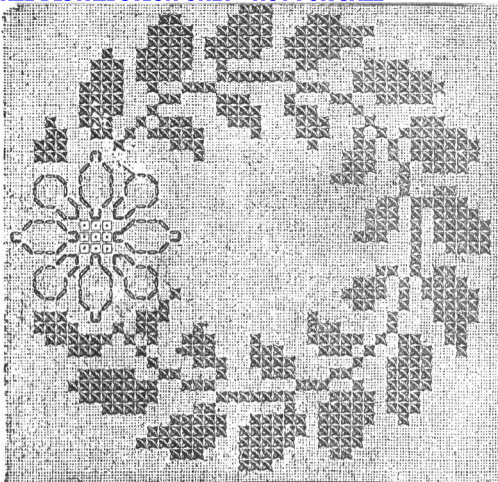
Nr. 9. Kreuzstichmuster zur Stufe Nr. 7.
 Farbenerklärung: x Weiß, ■ Schwarz.



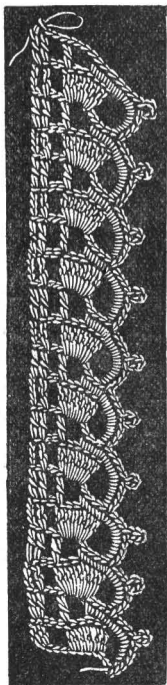




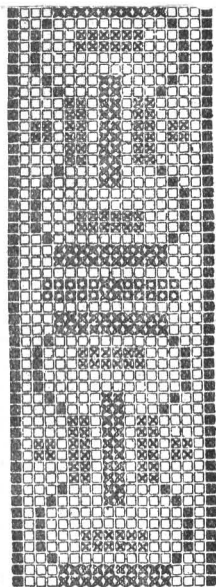
Pl. 18. Spitze mit Gardinen, Beden,
 Frankfurter u. a. Fädelarbeit.



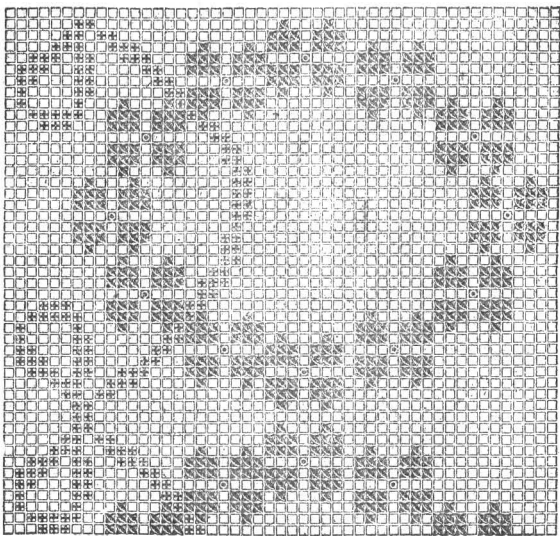
Nr. 15. Mustervorlage zur Kreuzsticharbeit der Schürze Abb. 1
der 1. Seilage. Farbenerklärung: H Grün, D Weiß, G Gelb



Nr. 84. Gehäkelte Spitze, verwendbar zur Verzierung von Wäschegegenständen etc.



Erklärung der Zeichen: ■■ erstes (dunkelstes), □□ zweites, ■■ drittes (hellstes) Blau, ■■ Rot, □□ Fond.



Nr. 48. Kreuzstichmuster zu Nr. 86. Farbenerkl.: ■■ Mittelblau, ■■ Violett, G Gelb.

