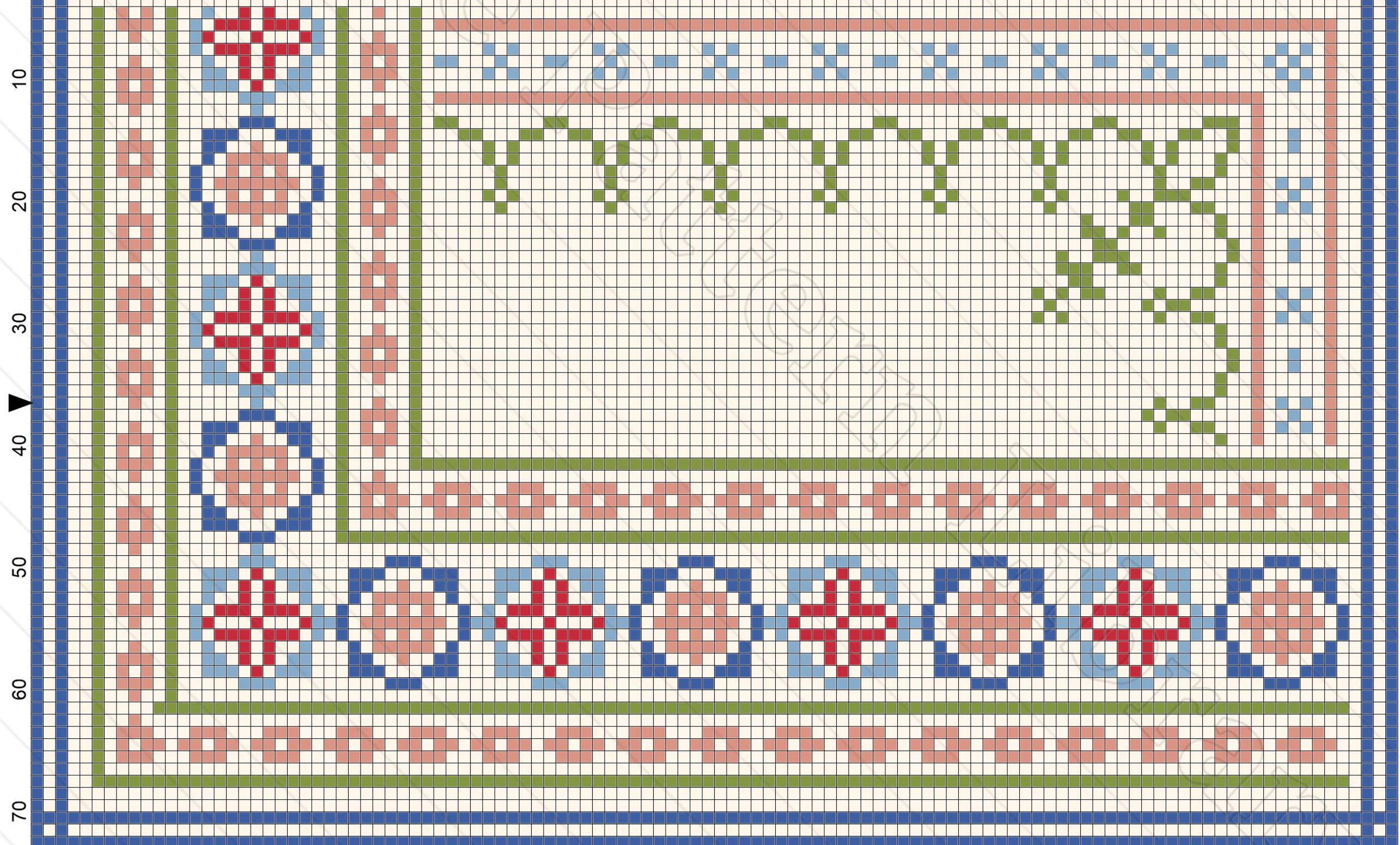
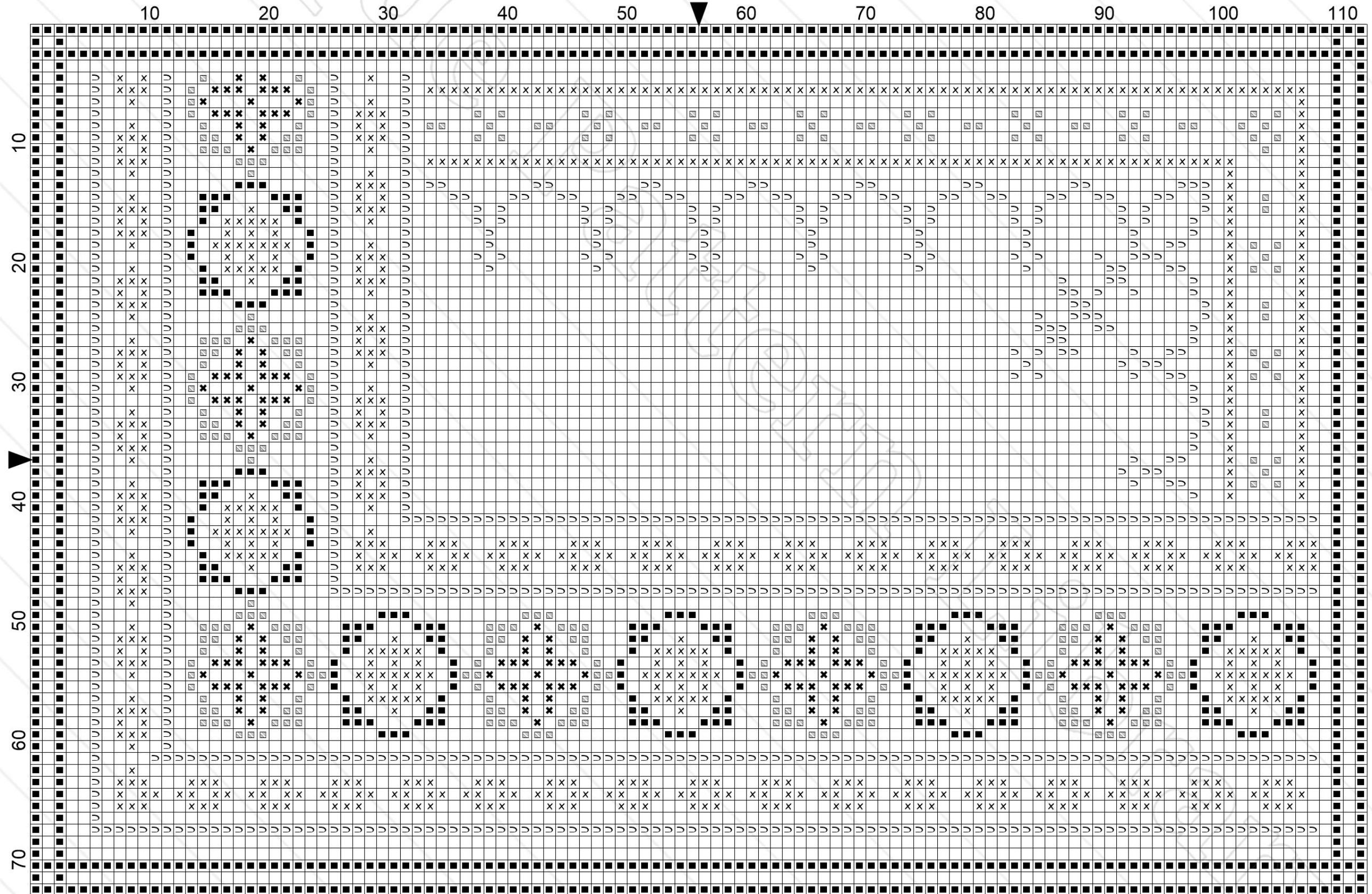


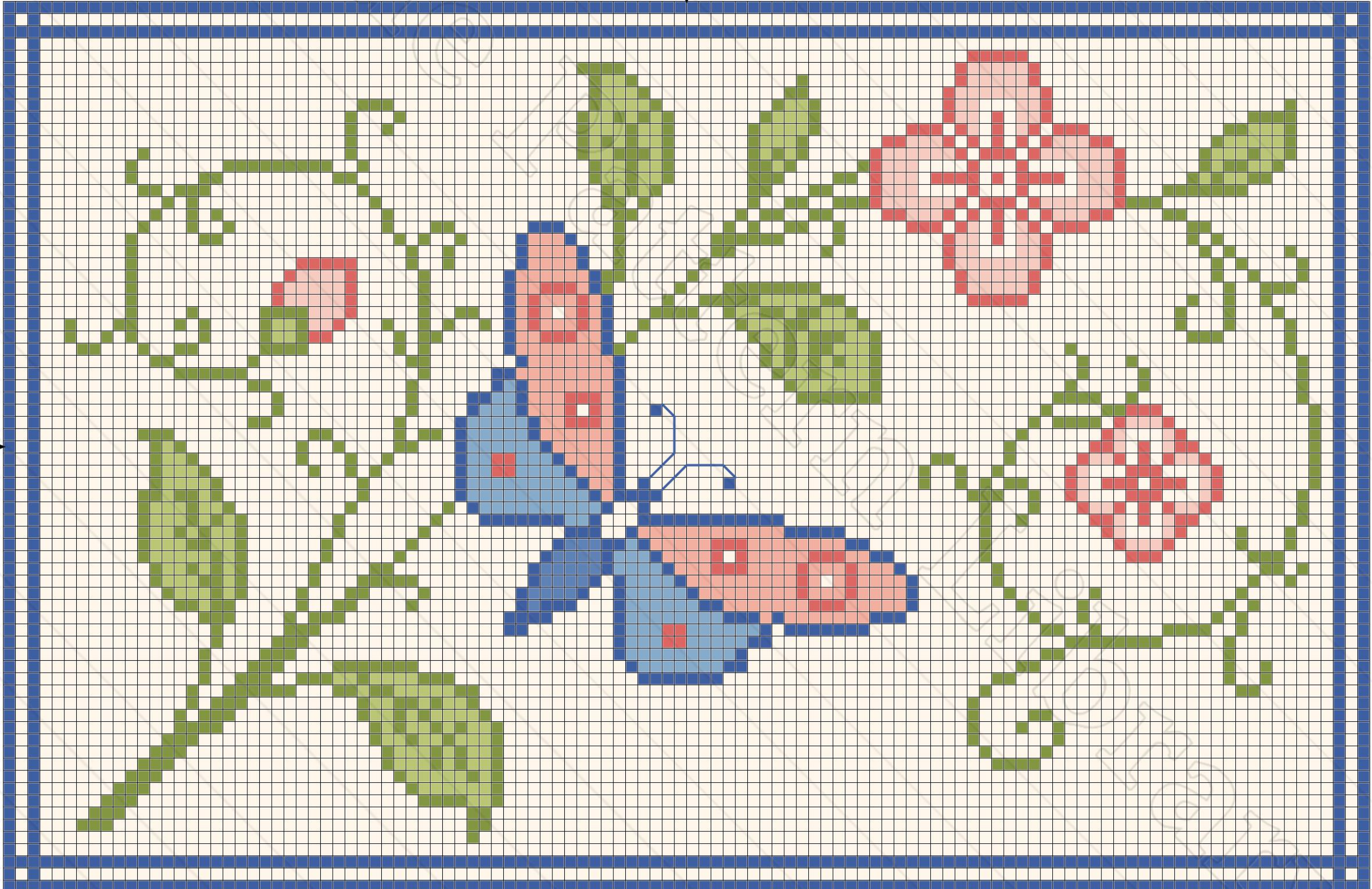
10 20 30 40 50 60 70 80 90 100 110



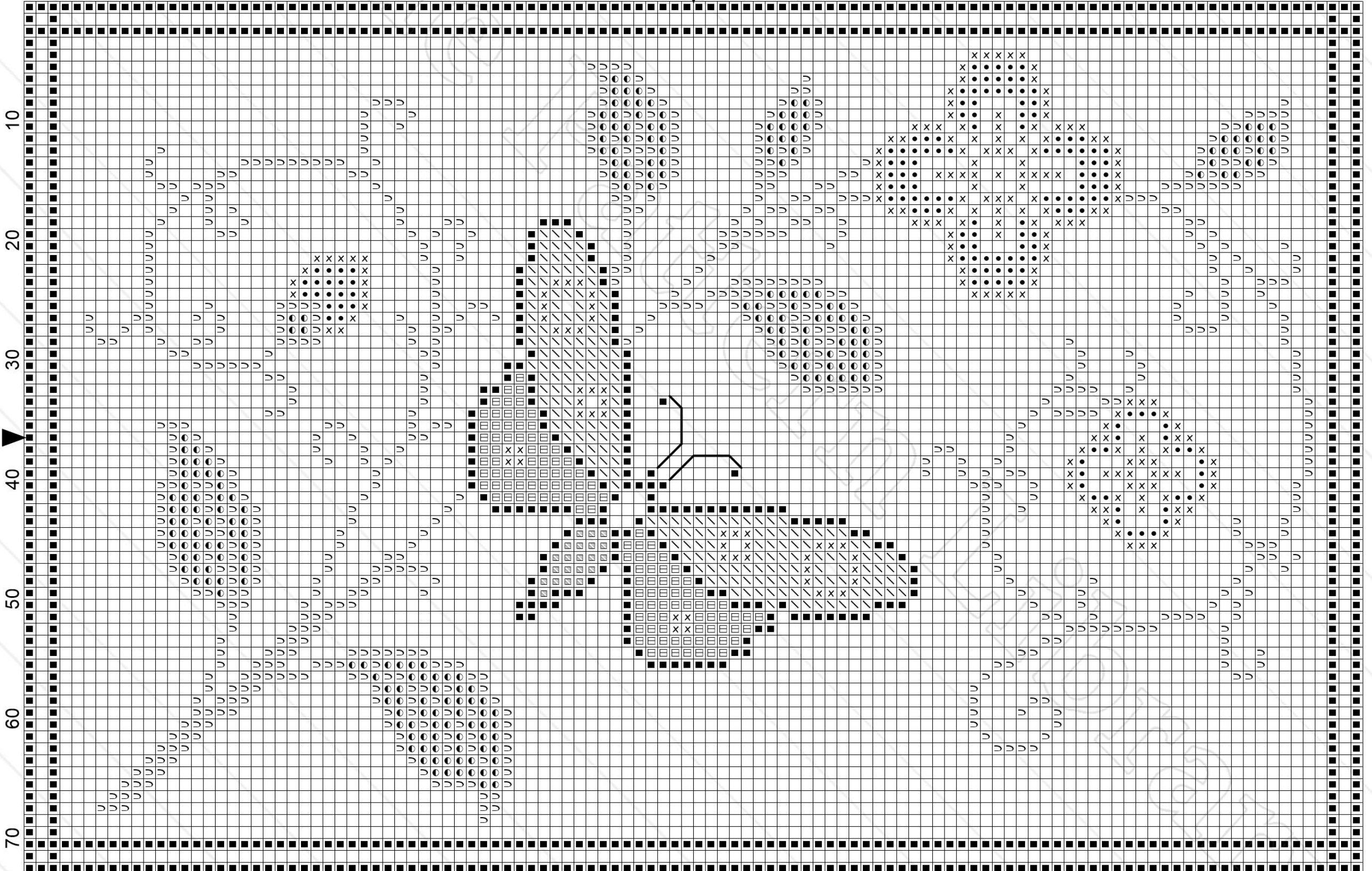


10 20 30 40 50 60 70 80 90 100 110

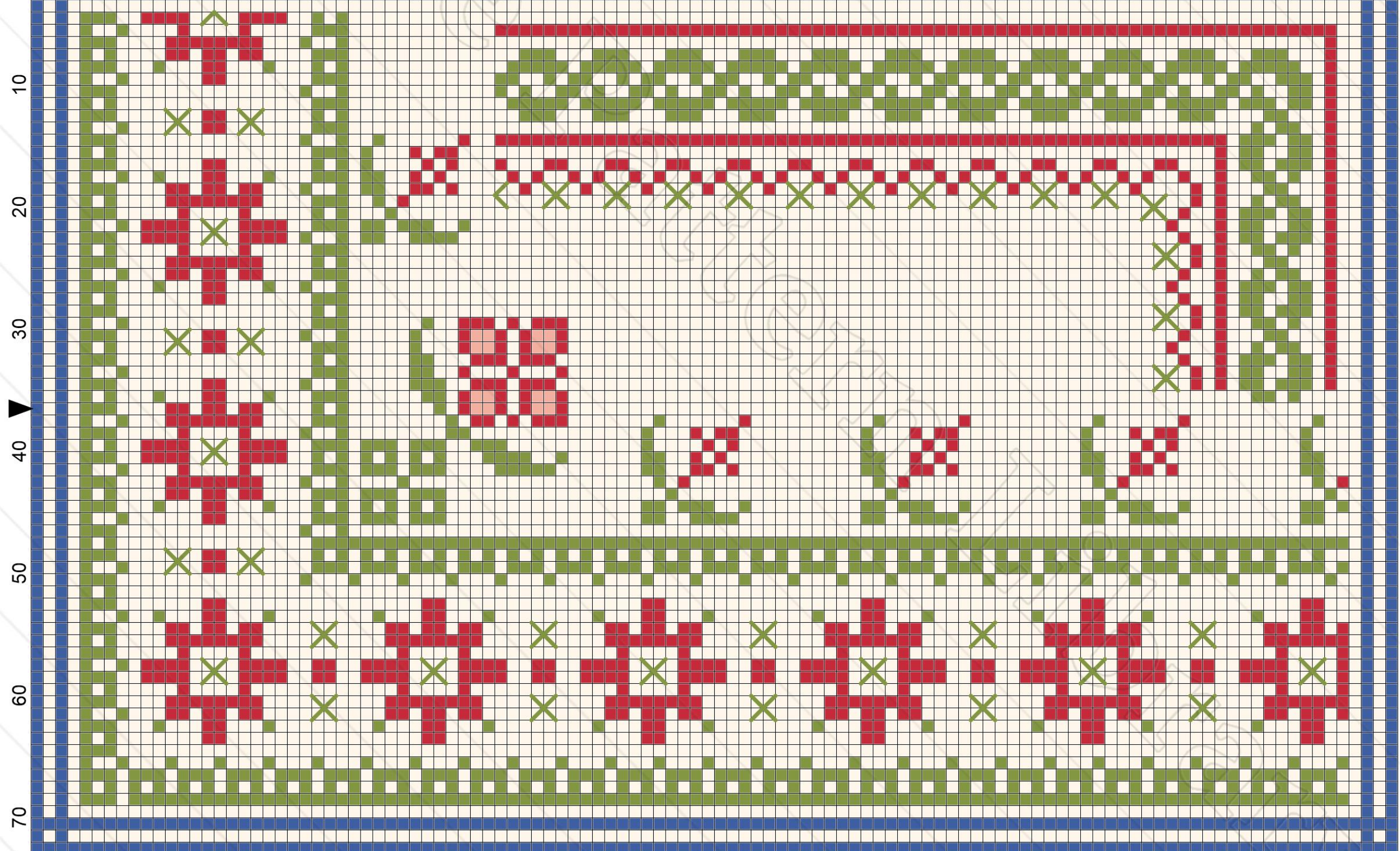
10
20
30
40
50
60
70



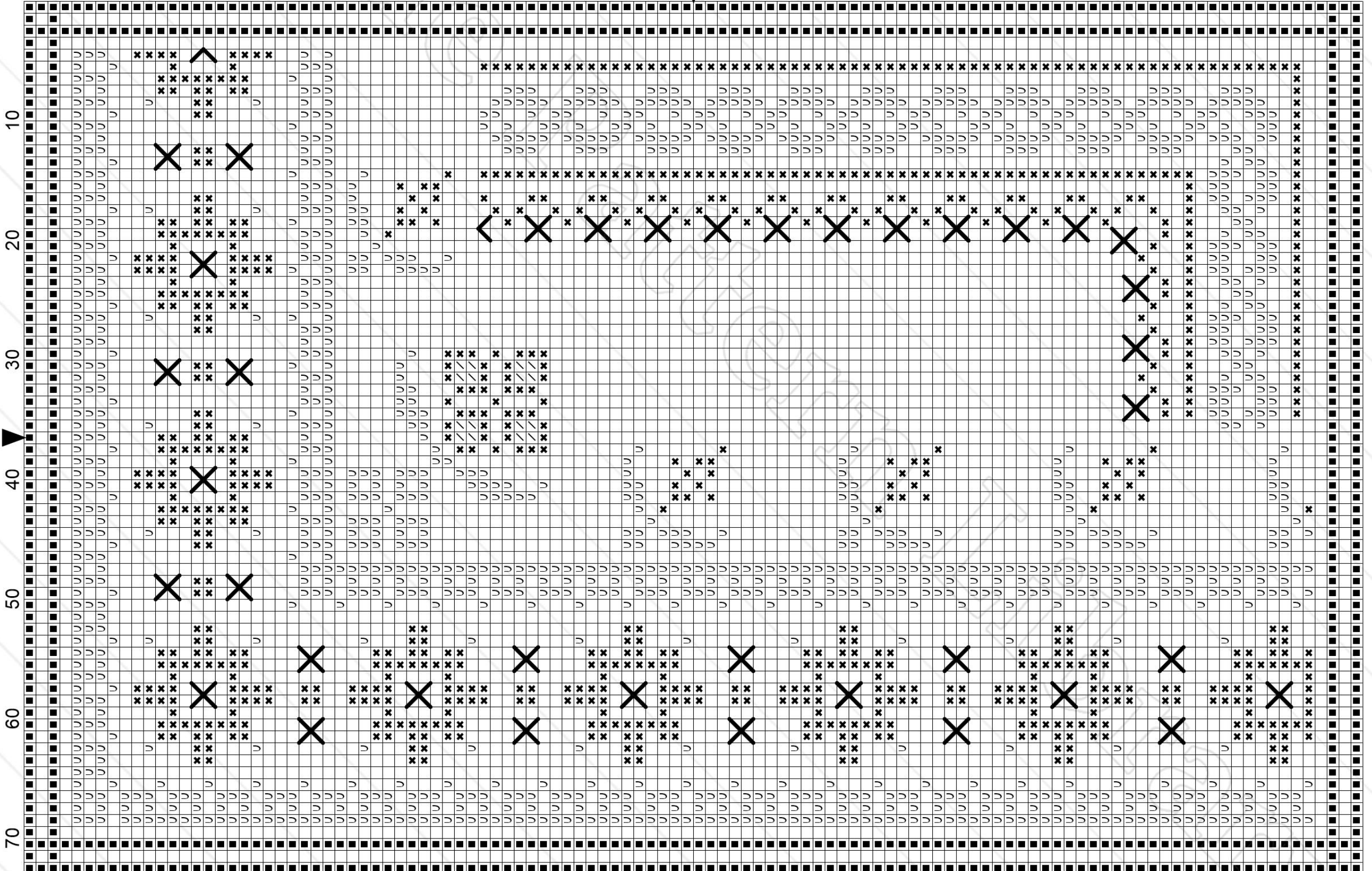
10 20 30 40 50 60 70 80 90 100 110



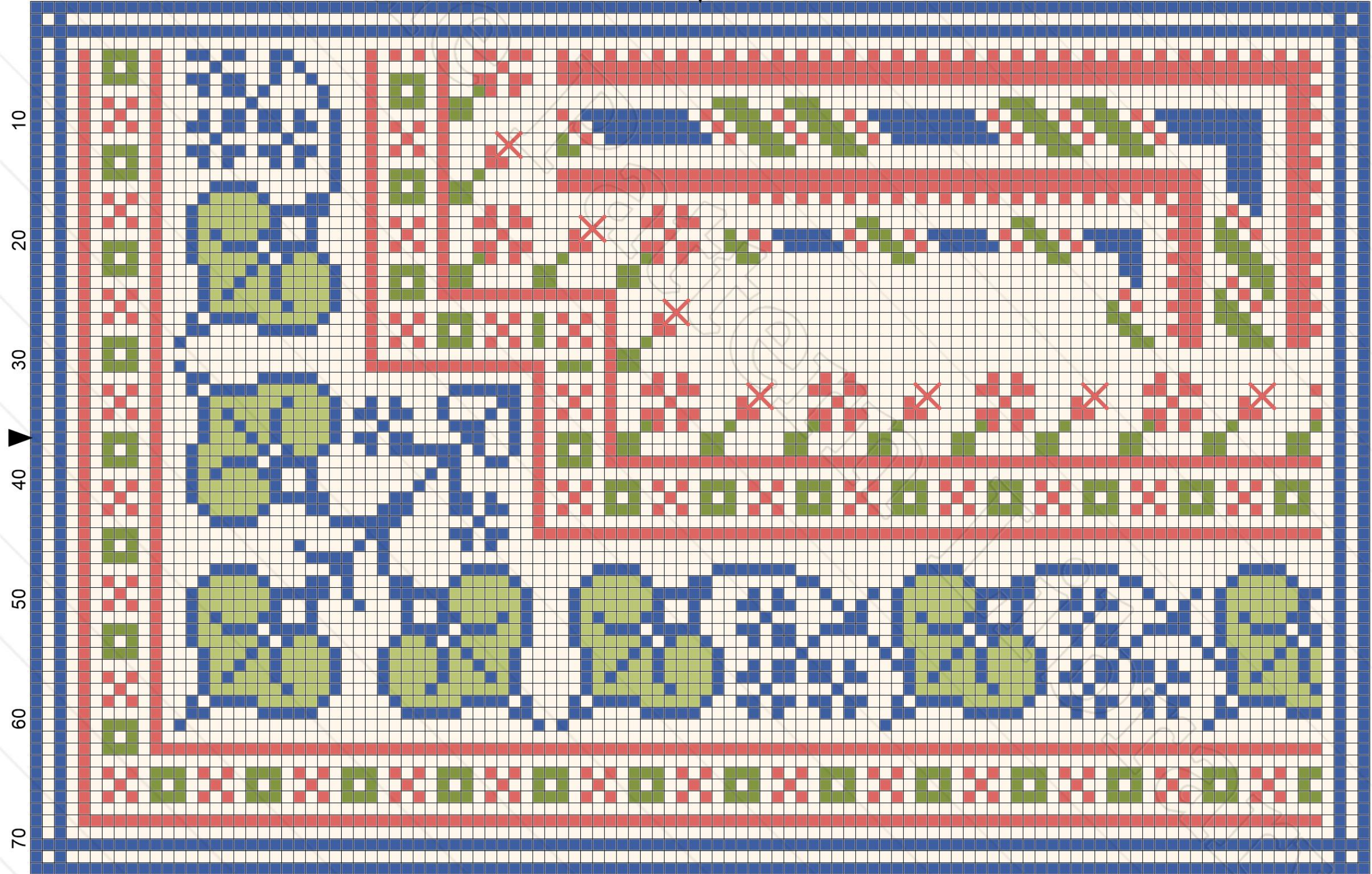
10 20 30 40 50 60 70 80 90 100 110

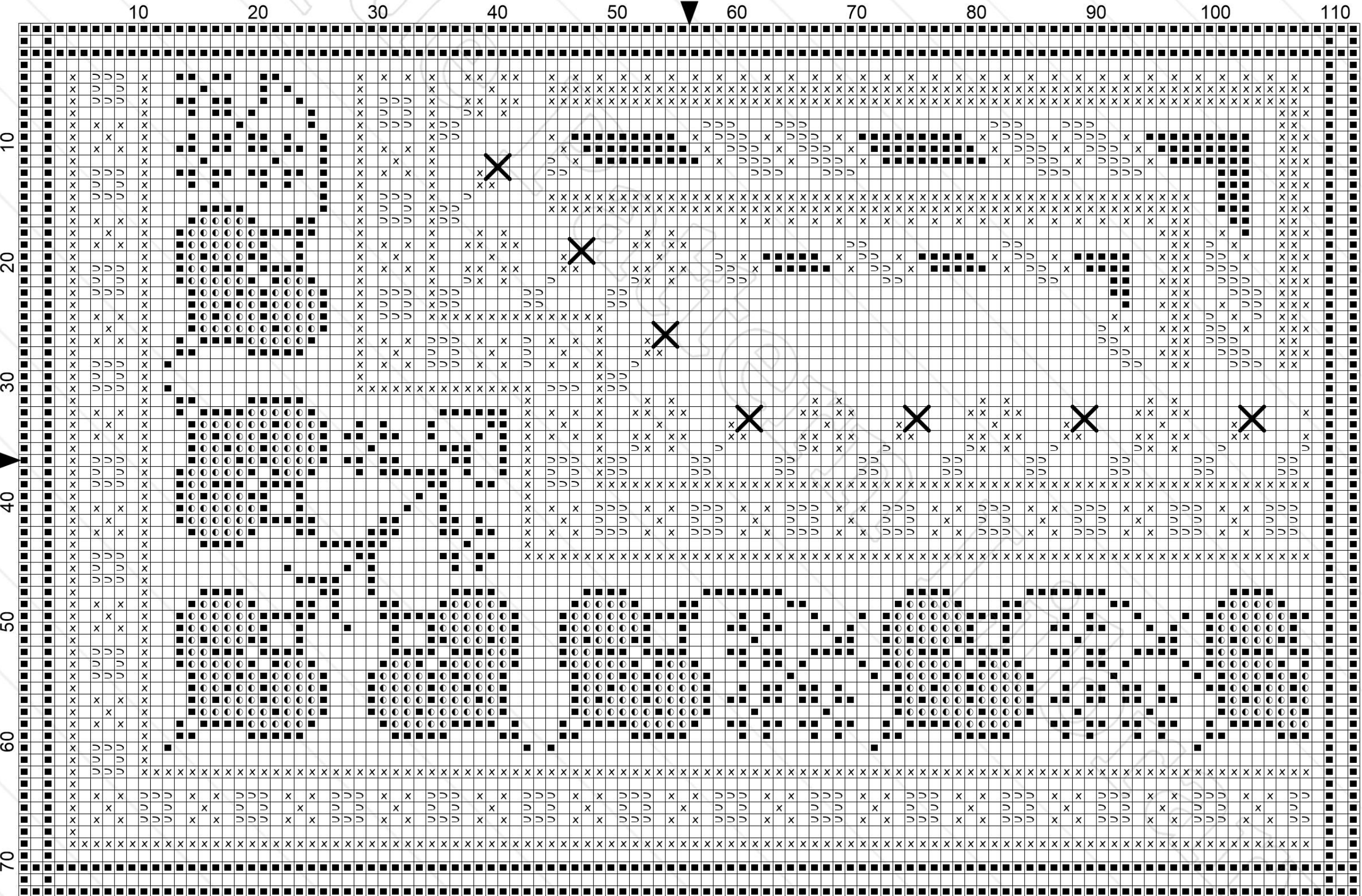


10 20 30 40 50 60 70 80 90 100 110



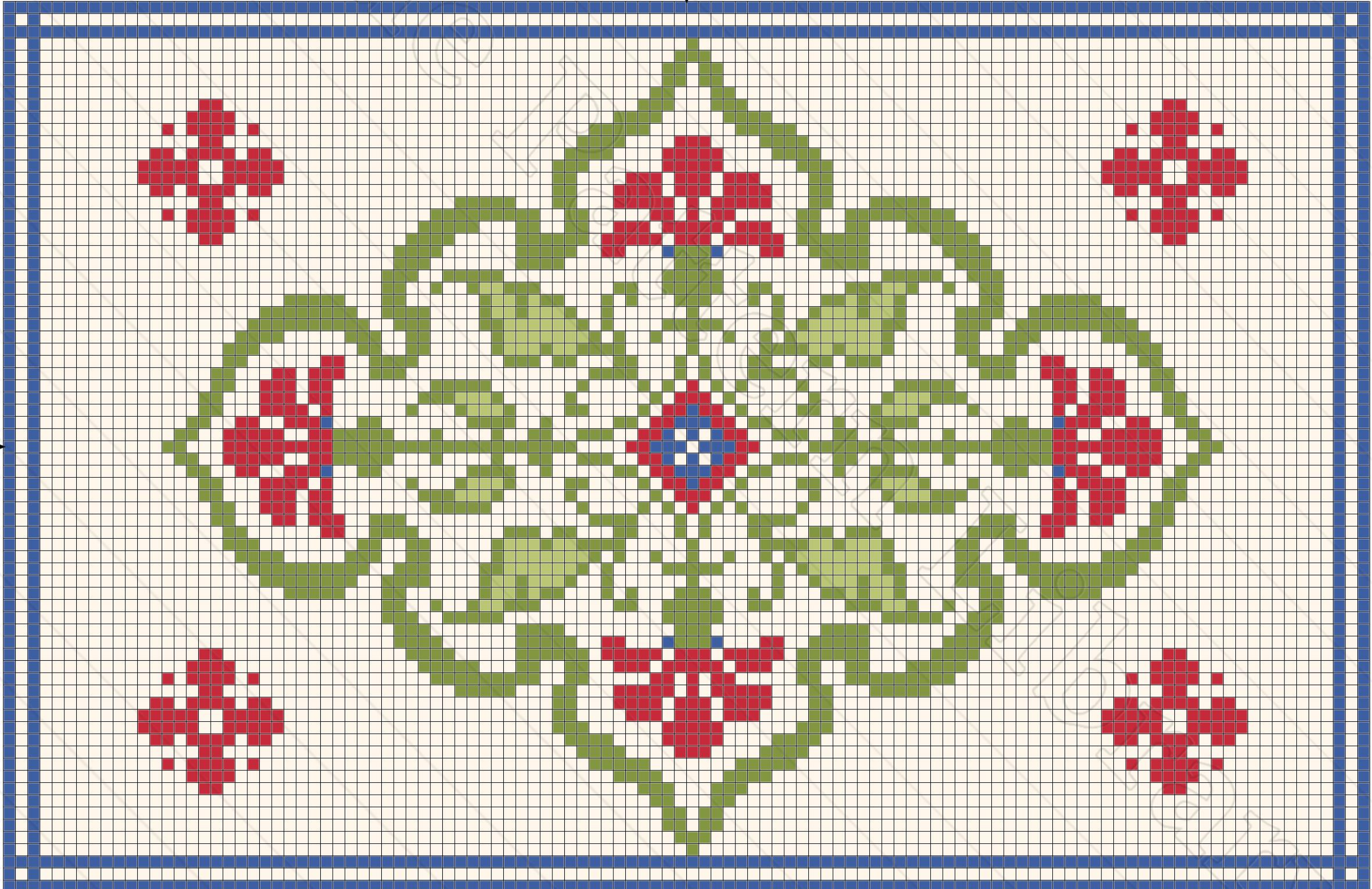
10 20 30 40 50 60 70 80 90 100 110



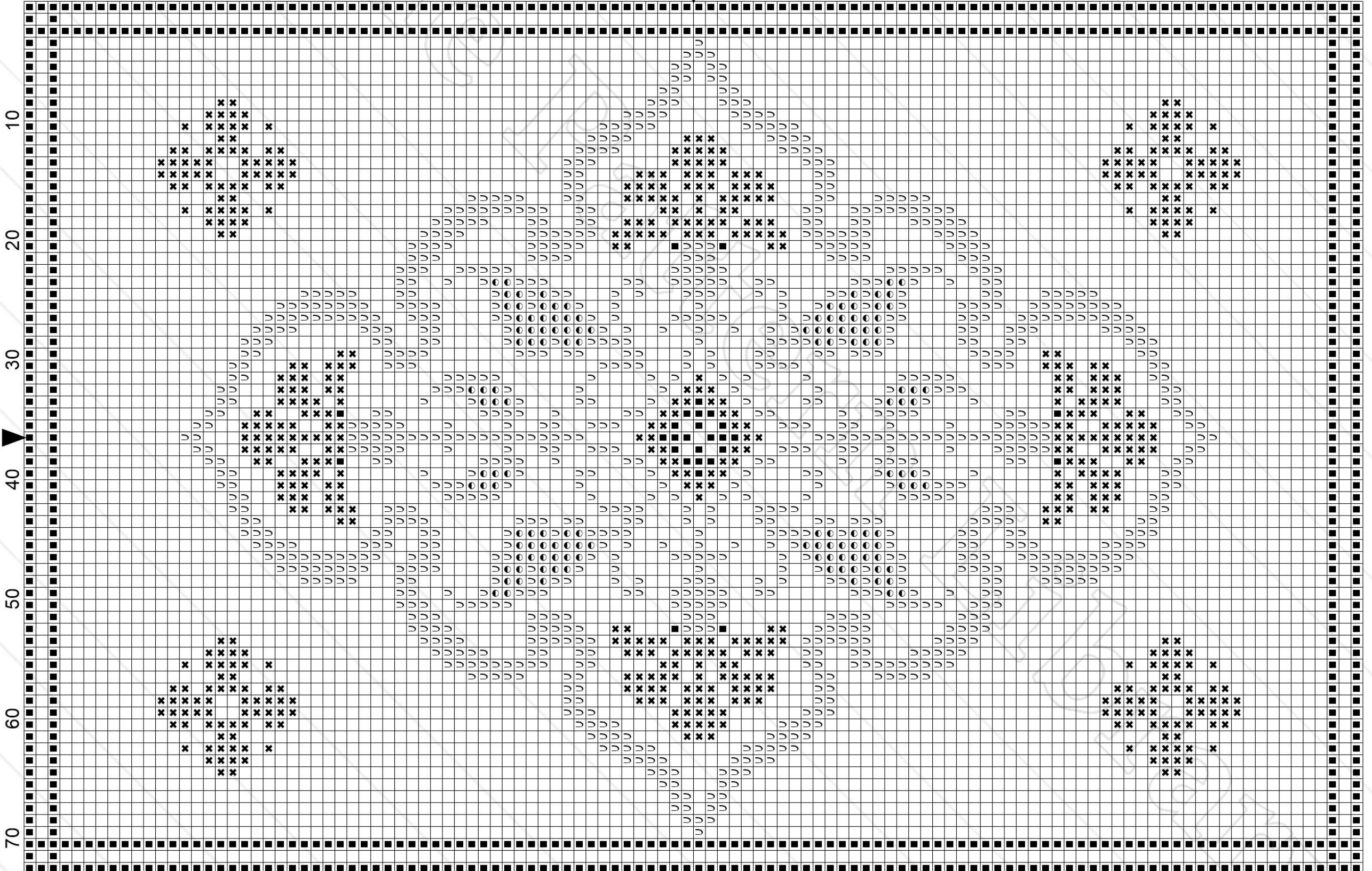


10 20 30 40 50 60 70 80 90 100 110

10
20
30
40
50
60
70

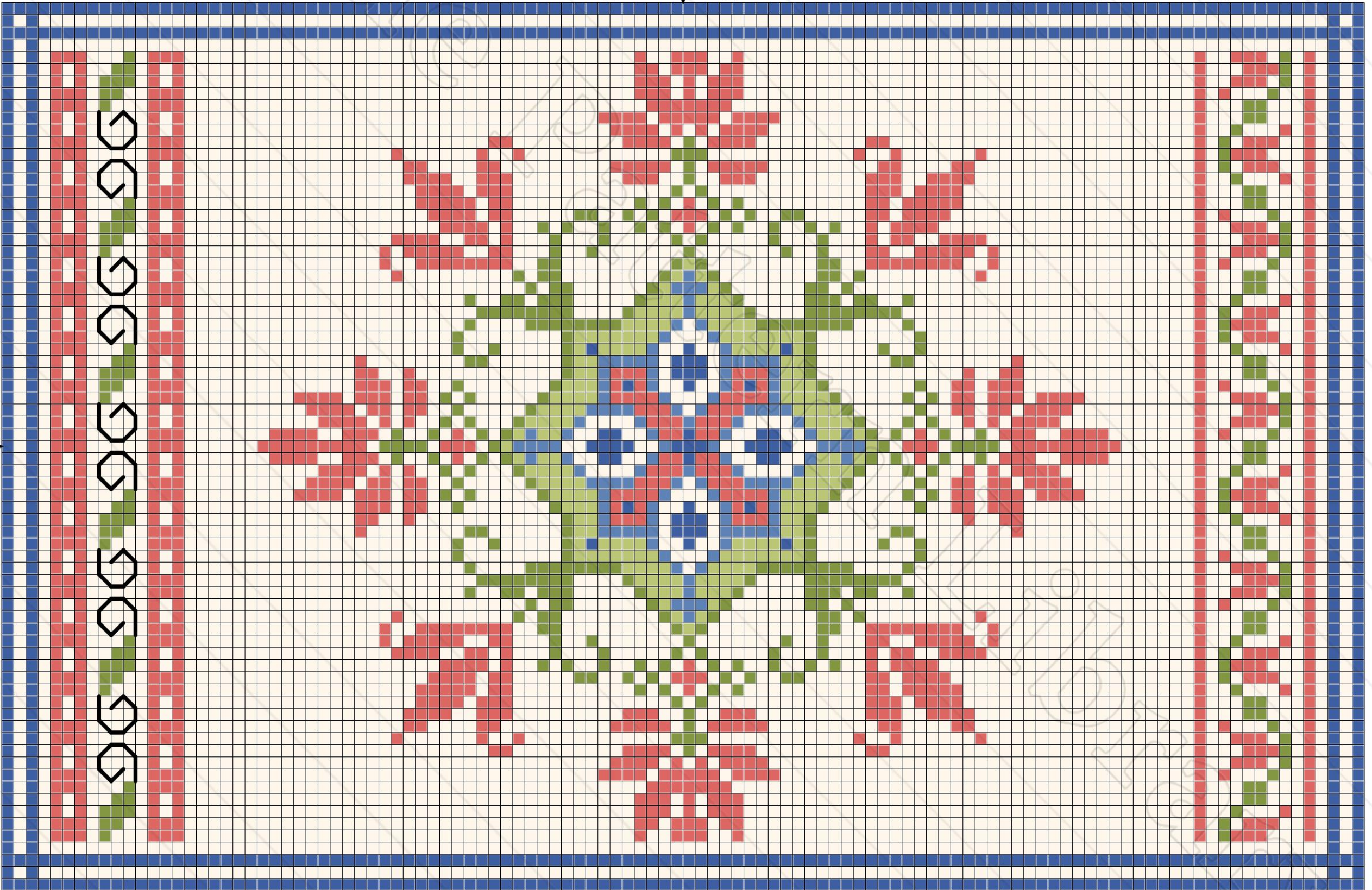


10 20 30 40 50 60 70 80 90 100 110

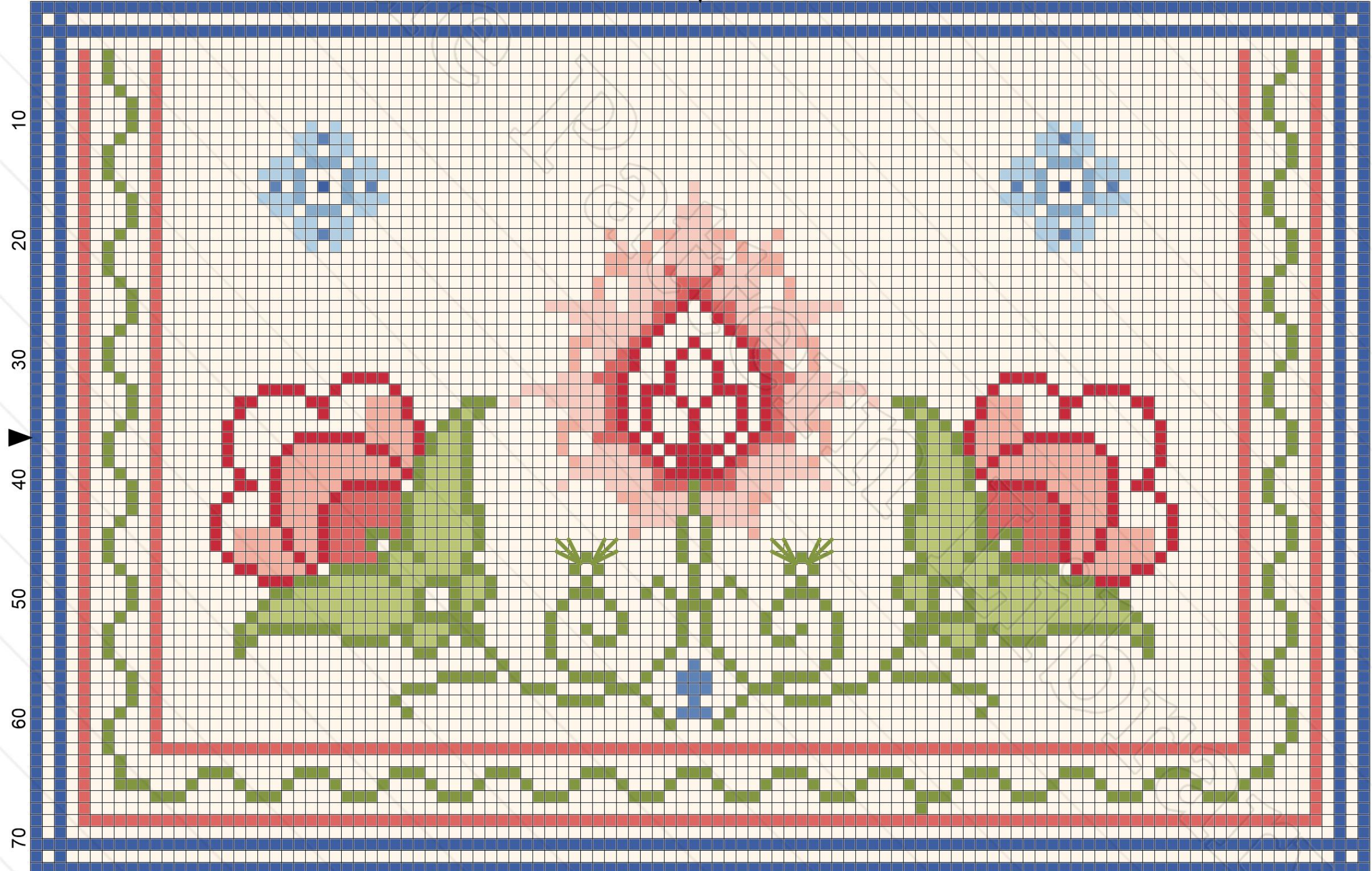


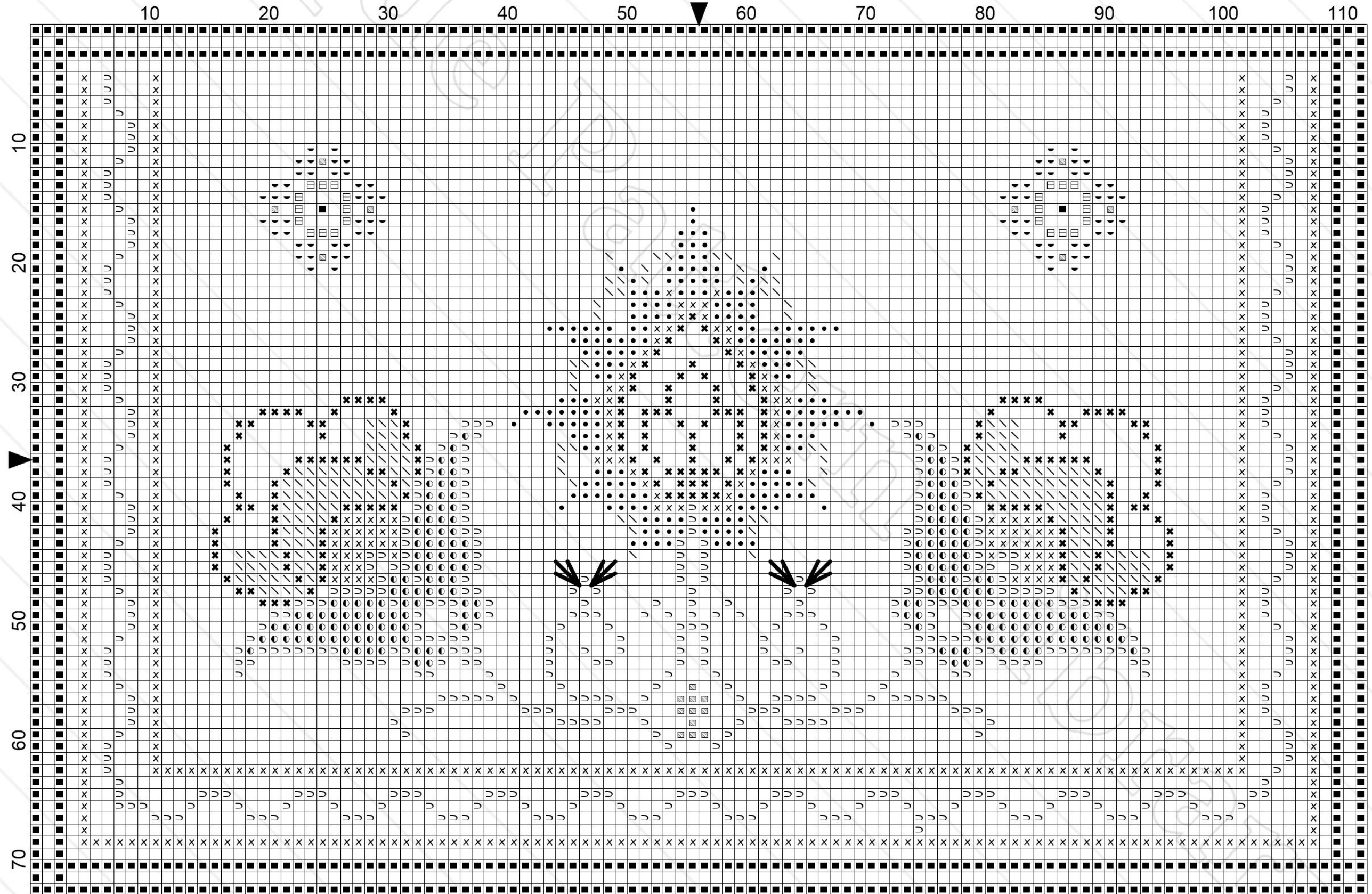
10 20 30 40 50 60 70 80 90 100 110

10
20
30
40
50
60
70

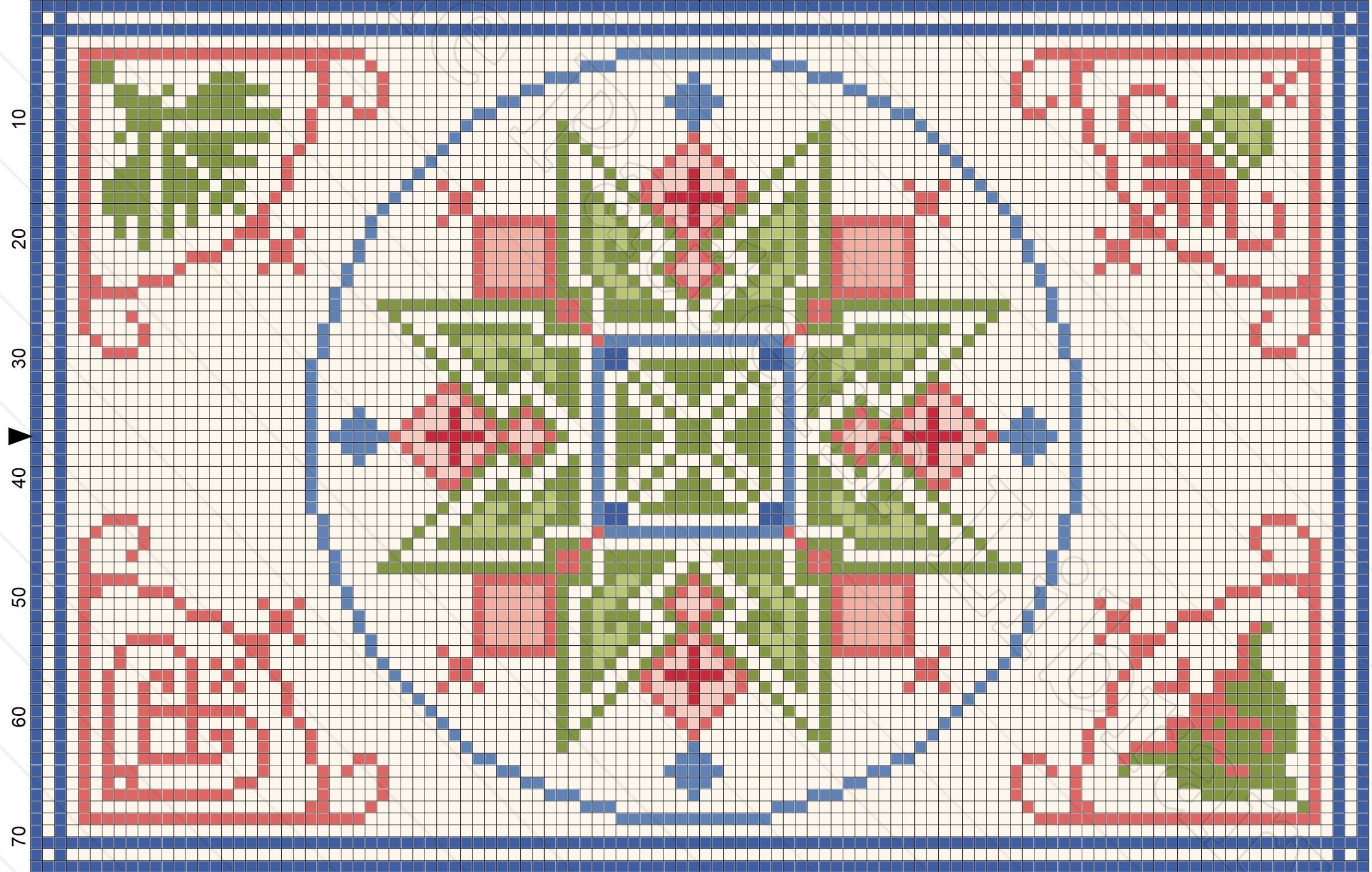


10 20 30 40 50 60 70 80 90 100 110

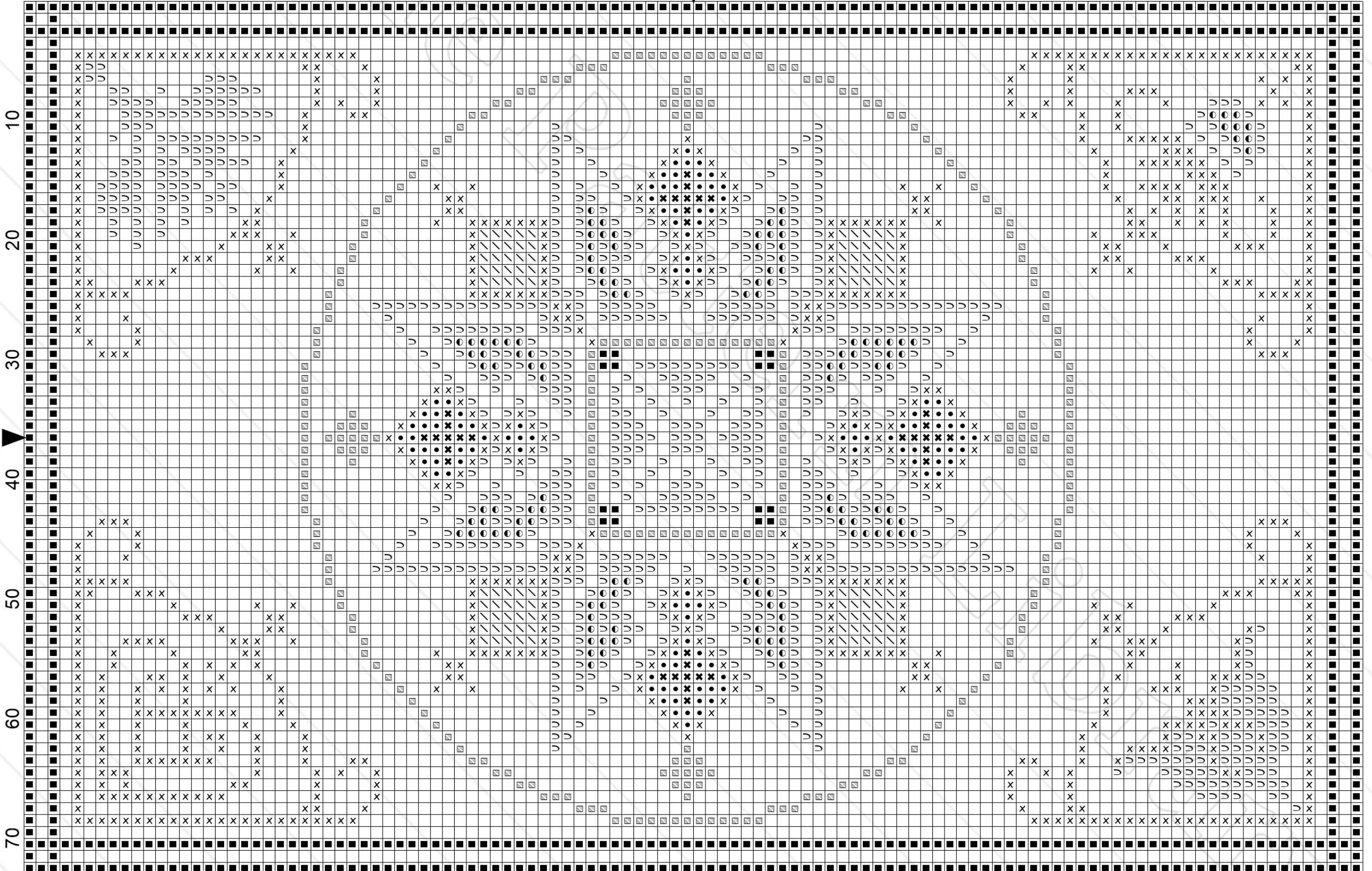




10 20 30 40 50 60 70 80 90 100 110



10 20 30 40 50 60 70 80 90 100 110



Title: E-WM027 Heinrich Kuehn – Patterns in green, red, and blue
Author: Antique Pattern Library
Company: New Media Arts Inc.
Copyright: Creative Commons 4.0 NC SA BY
Free distribution only - NOT FOR SALE
Grid Size: 112W x 73H
Design Area: 8.00" x 5.21" (112 x 73 stitches)

Legend: Stitches

▷	DMC Cotton 469	avocado green
×	DMC Cotton 351	coral
✕	DMC Cotton 321	christmas red
■	DMC Cotton 798	delft blue - dk
▨	DMC Cotton 799	delft blue - md
↘	DMC Cotton 353	peach
●	DMC Cotton 754	peach - lt
☐	DMC Cotton 809	delft blue
◐	DMC Cotton 471	avocado green - vy lt
◑	DMC Cotton 800	delft blue - pl