

## The Antique Pattern Library

For more information, please see our website at: <http://www.antiquepatternlibrary.org>



This is a scan of an antique book that is, to the best of our knowledge, in the public domain. The scan itself has been photo-edited for readability, and is licensed under the **Creative Commons** Attribution-NonCommercial-ShareAlike License. To view a copy of this license, visit <http://creativecommons.org/licenses/by-nc-sa/2.5/> or send a letter to Creative Commons, 559 Nathan Abbott Way, Stanford, California 94305, USA.

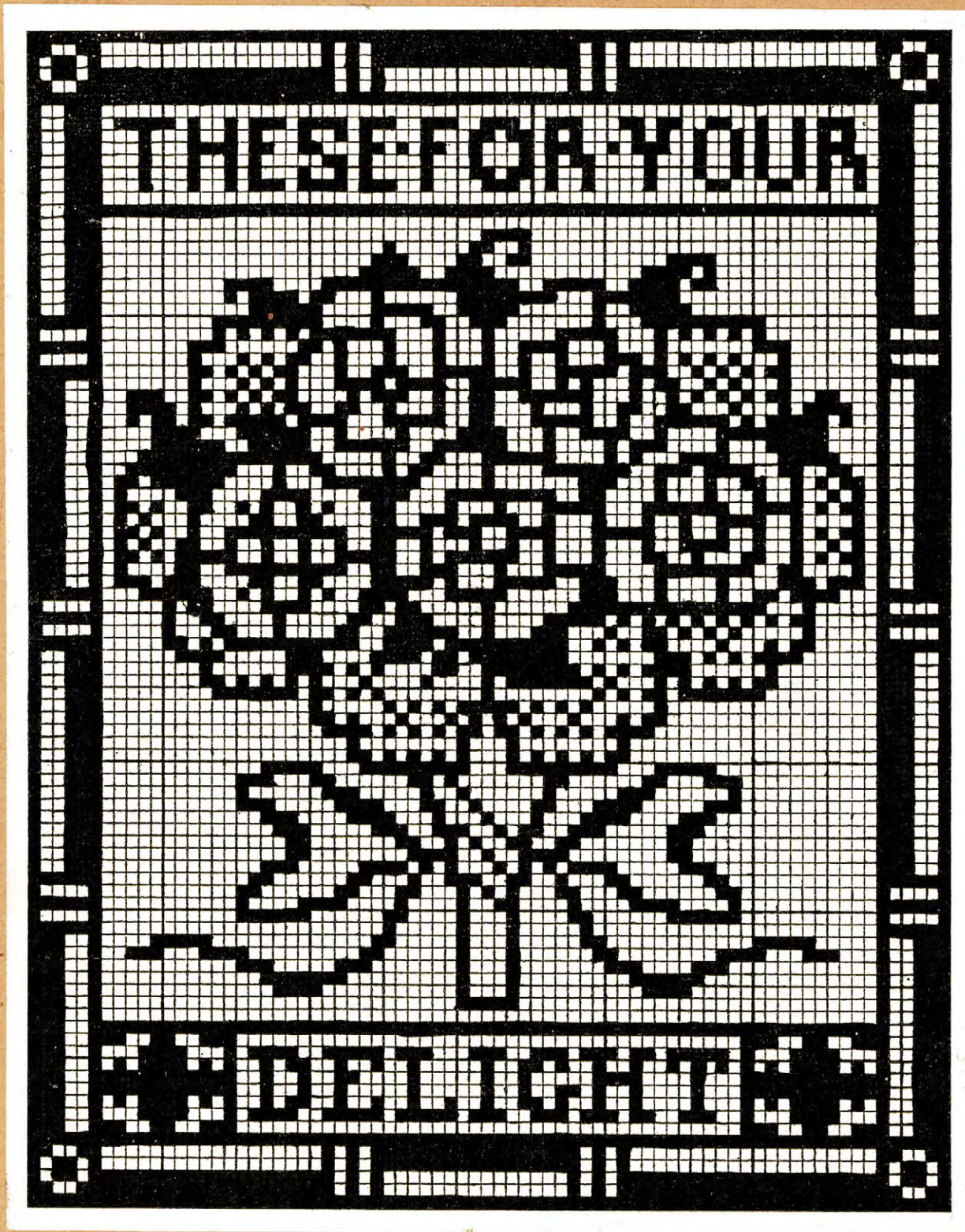
You may share copies or printouts of this scan freely. You may not sell copies or printouts.

Donated by

Louise A. Tiemann

# A PORTFOLIO OF DESIGNS FOR EMBROIDERY

By JOAN DREW



*Price 5s. net*

LONDON: SIR ISAAC PITMAN & SONS, LTD., PARKER ST., KINGSWAY, W.C.2  
BATH                      MELBOURNE                      TORONTO                      NEW YORK

1926



(1) Sampler : suggested colours, blue and green



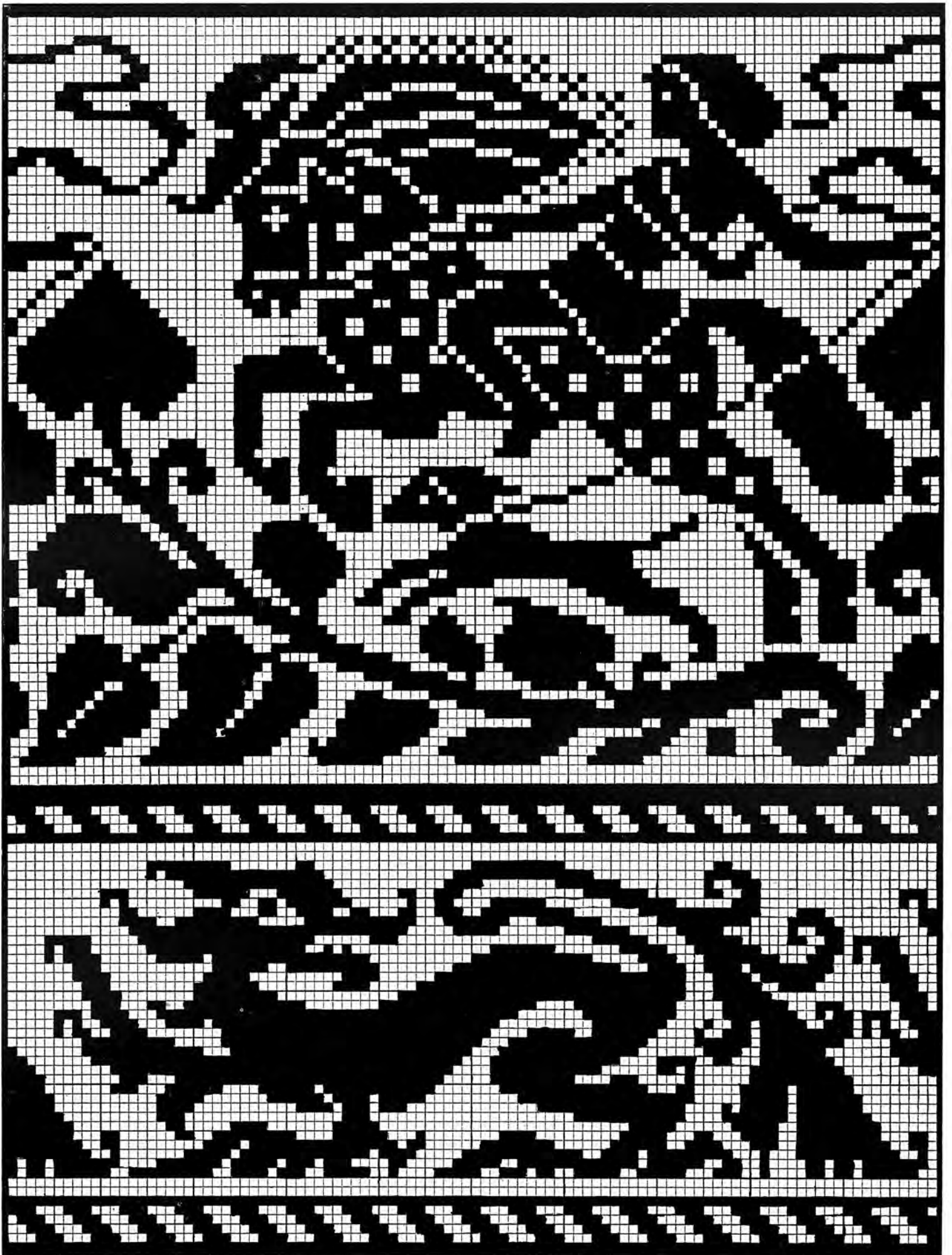
(2) Tulips : colour, blue and purple. Star Silko No. 5, 785 and 763



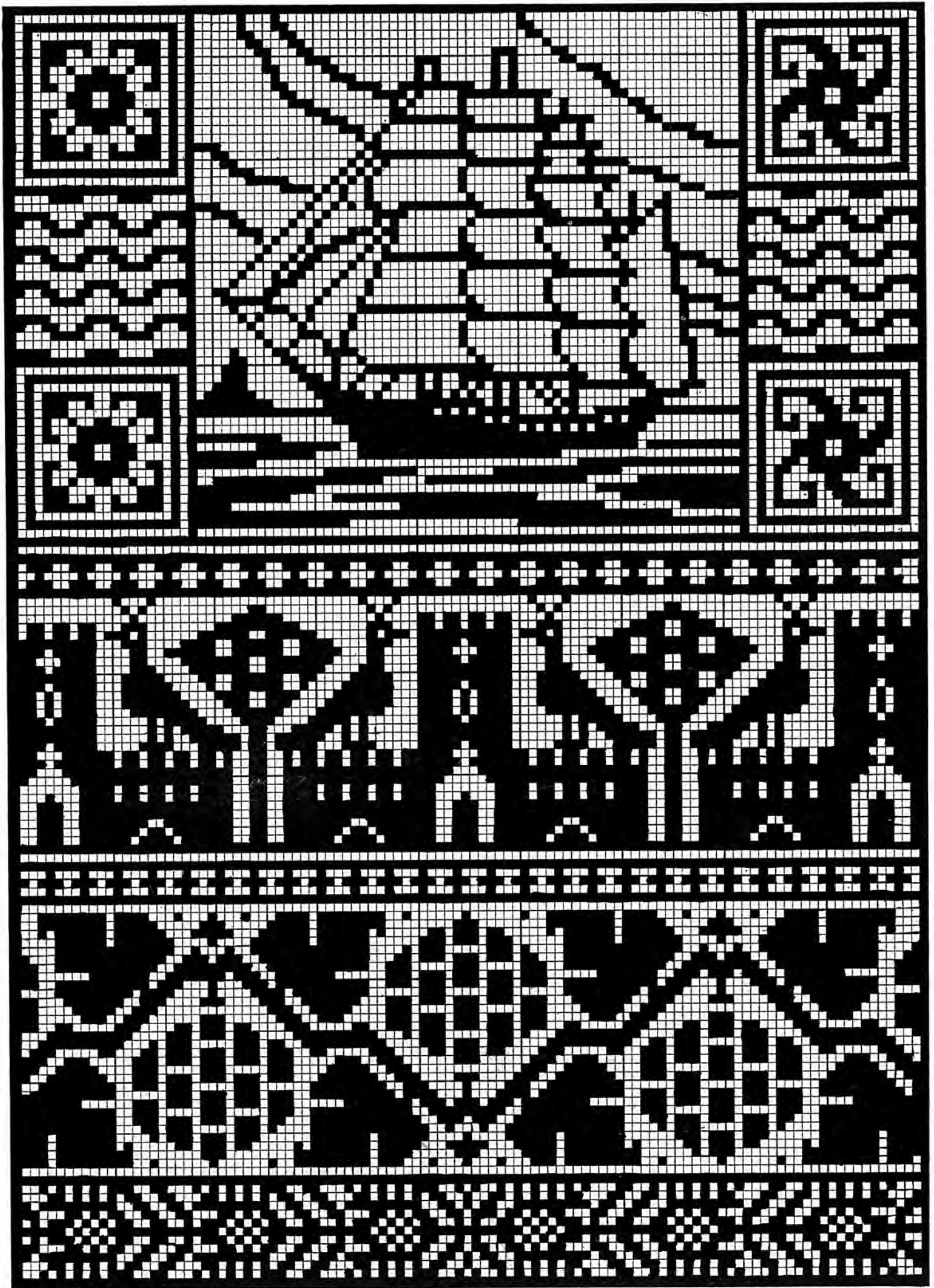
(3) Cushion Centre and Borders. D.M.C. stranded cotton, 3686



(4) Dainty Nymphs : purple and blue or blue and brown



(5) Hunting and Dragon Border in brilliant colours



(6) Ship and Borders in strong red, blue, or black

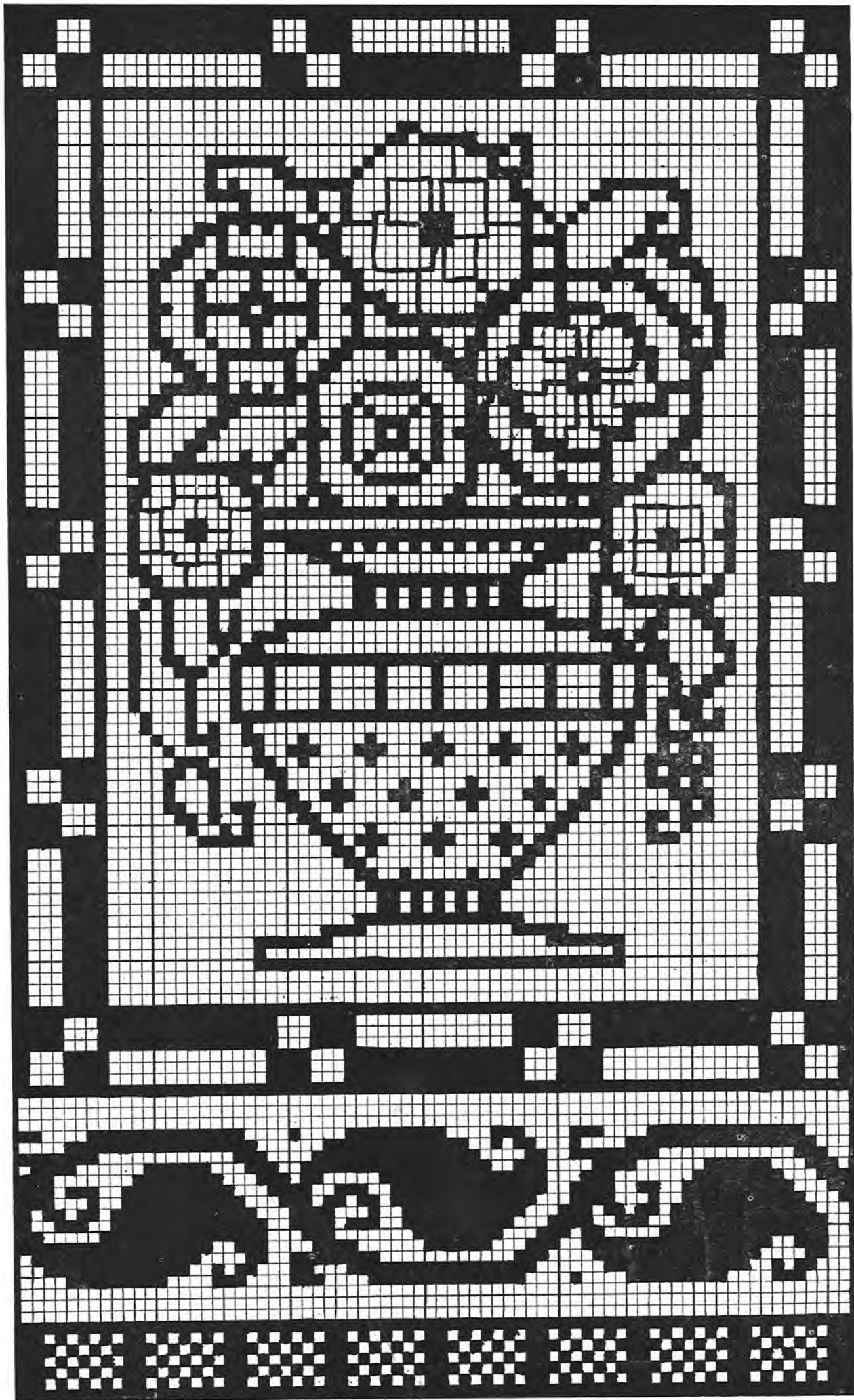




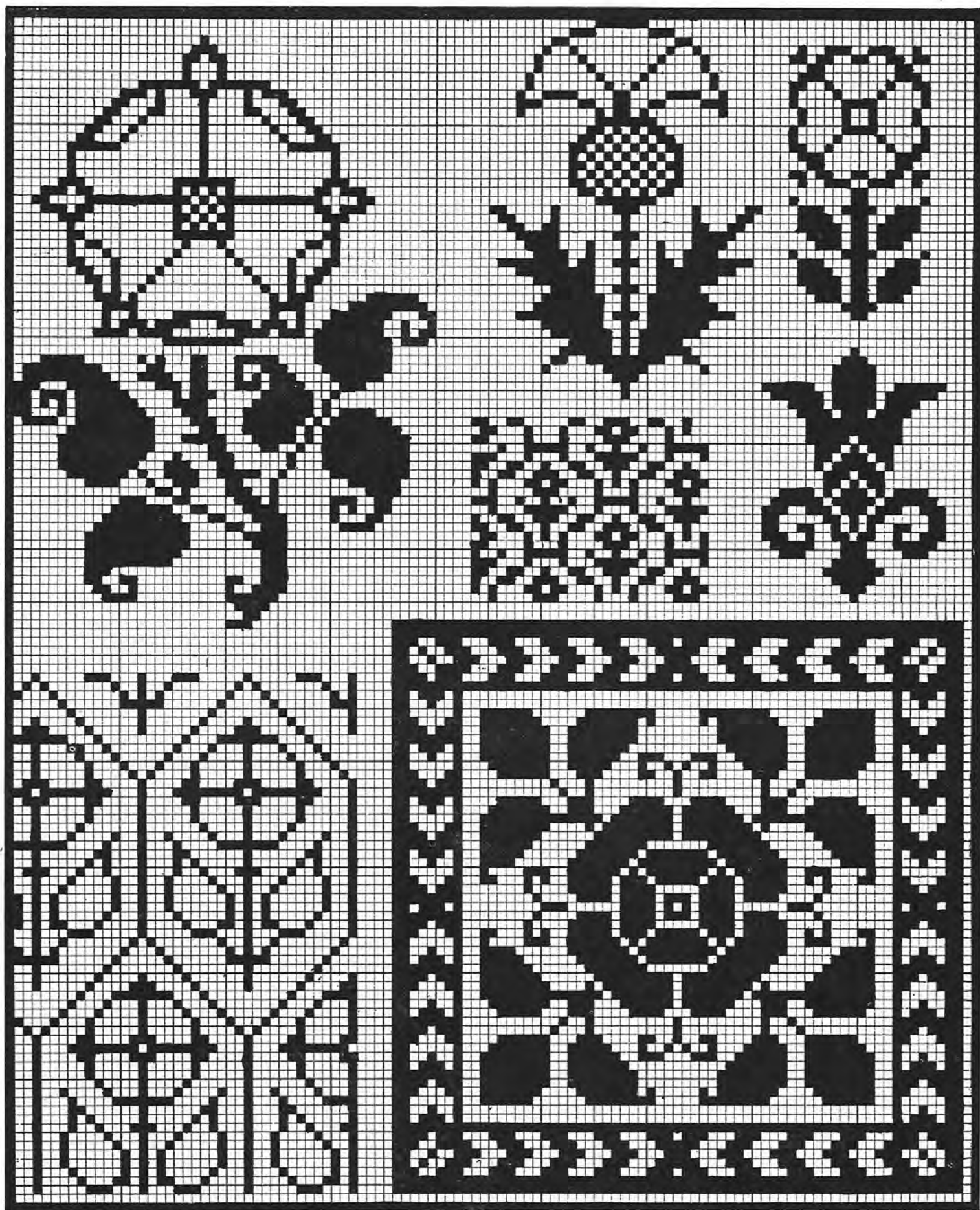
(7) Dragon and Mermaid Border : dark blue, purple and green



(8) No. 1, Border. No. 2, Design for a Square Cushion. In Pearsall's Filoselle, No. 220A



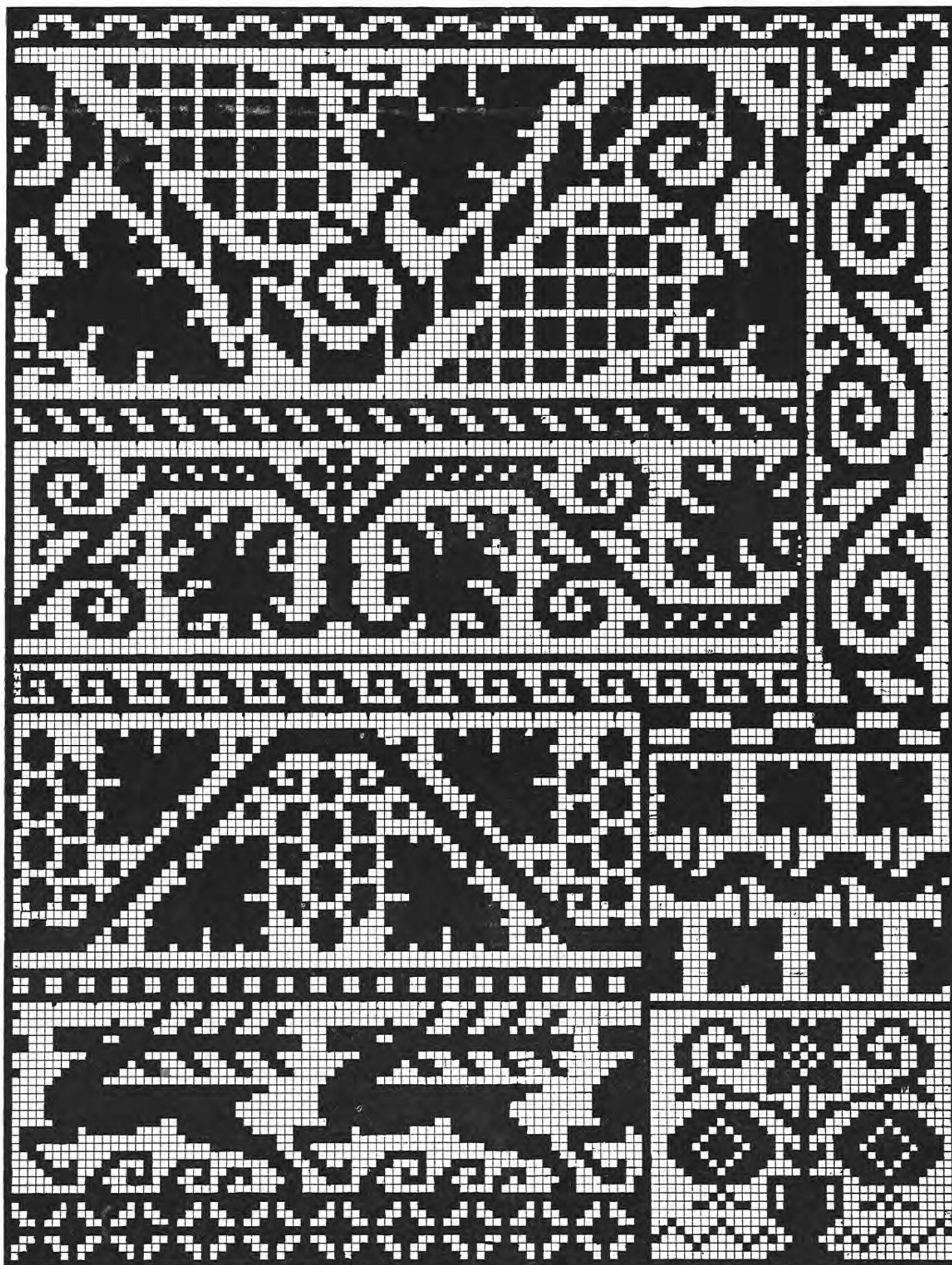
(9) Vase of Flowers in brilliant colours



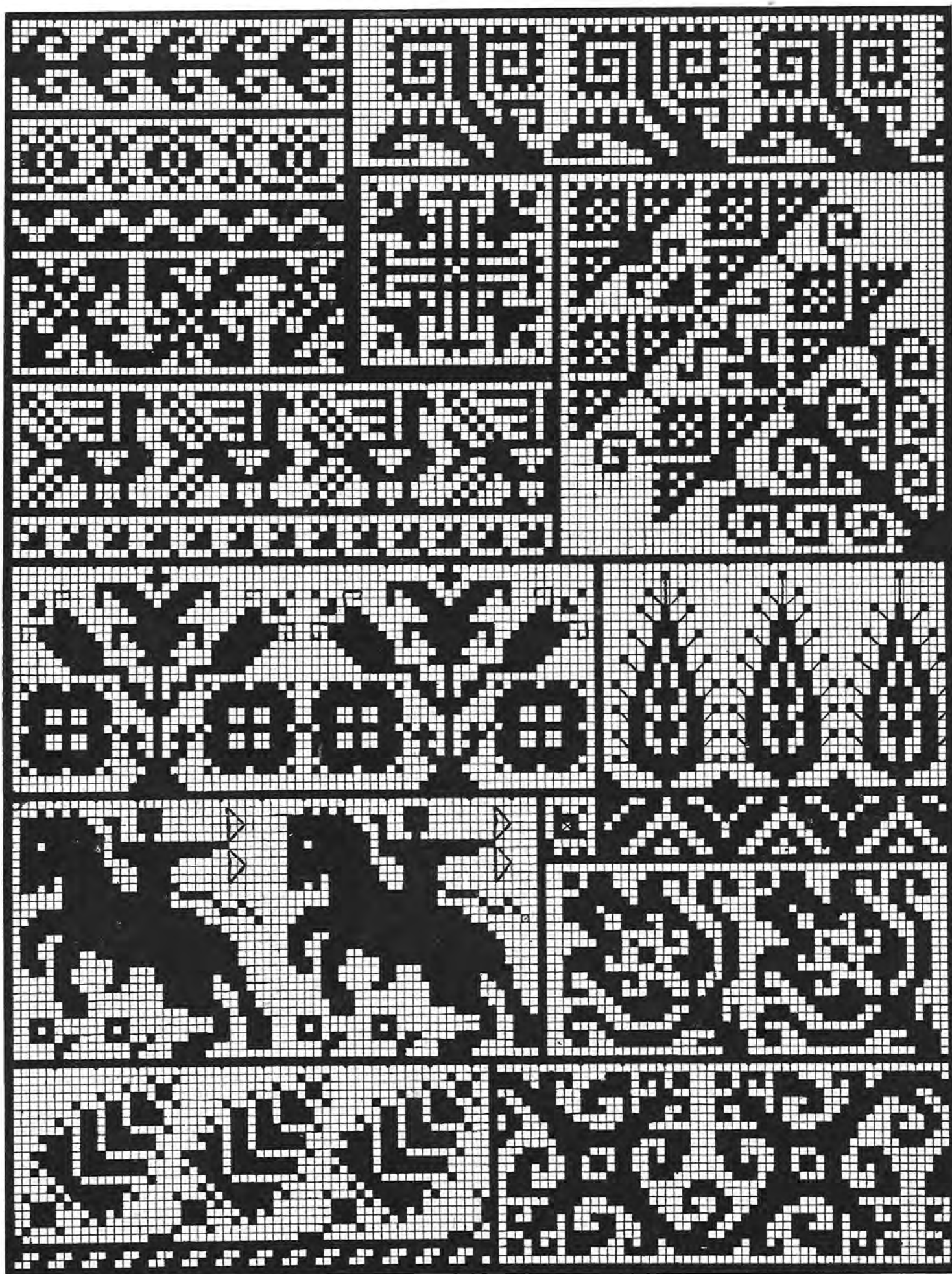
(10) Roses for canvas or linen ground



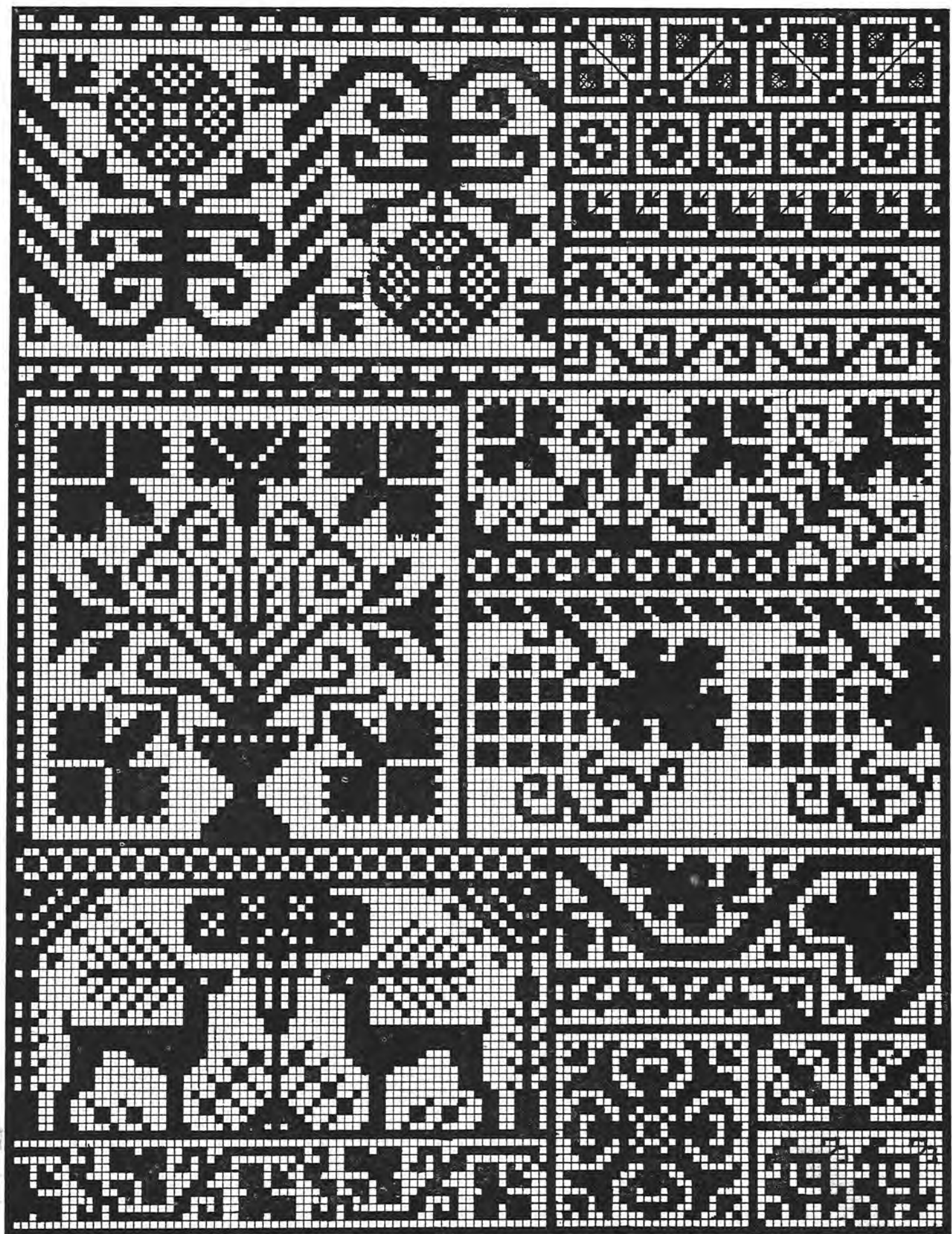
(11) Birds and Grapes in Star Silko No. 5, 785-763



(12) Useful designs in deep red, blue, or black



(13) Useful designs



(14) Useful designs