

MÉDAILLE D'ARGENT A L'EXPO^N UNIV^{LLE} DE 1889

DESSINS
DE
BRODERIES

N° 652

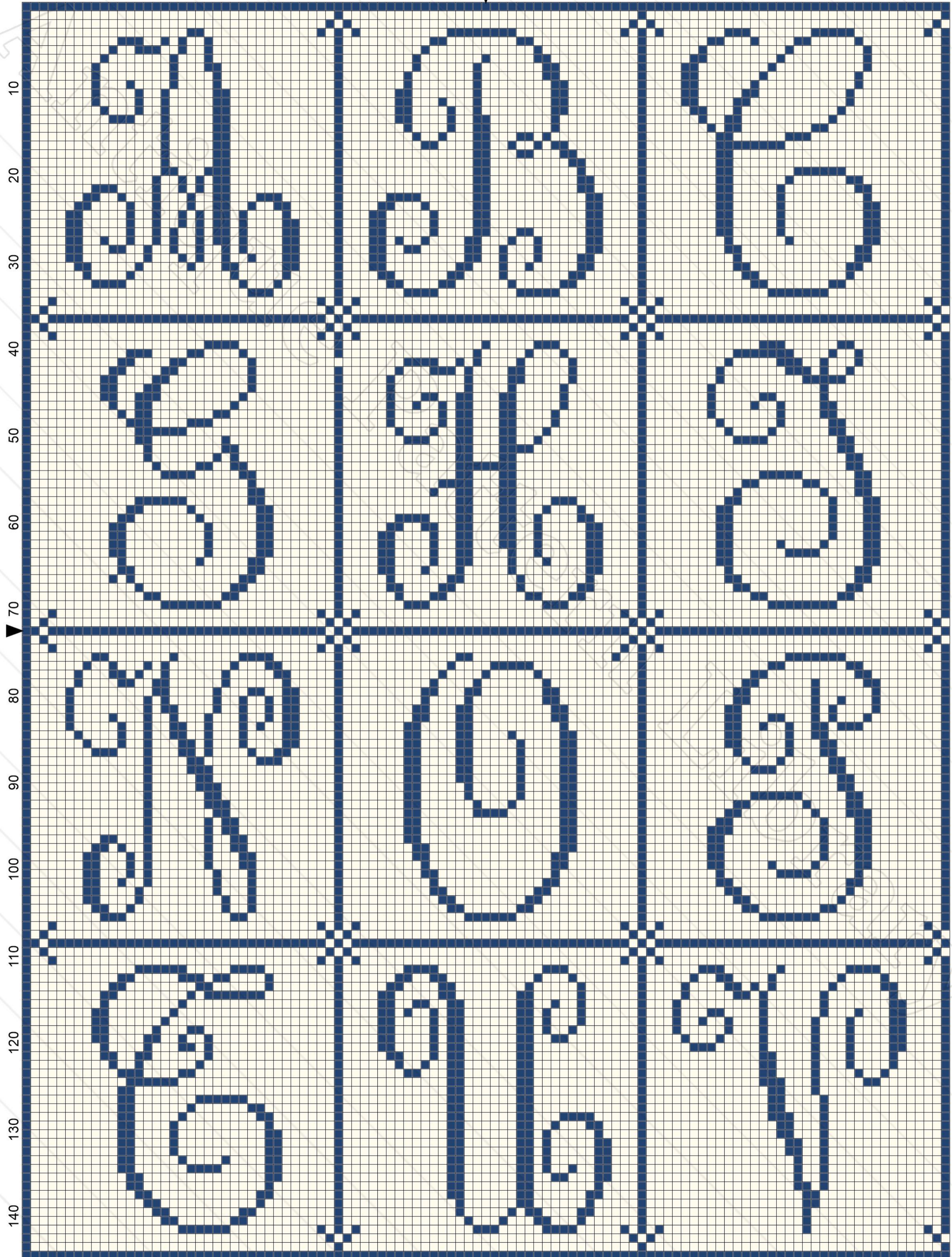
GEFFÈVRE & CABIN FILS
SUCCESSEURS

SÉBASTOPOL

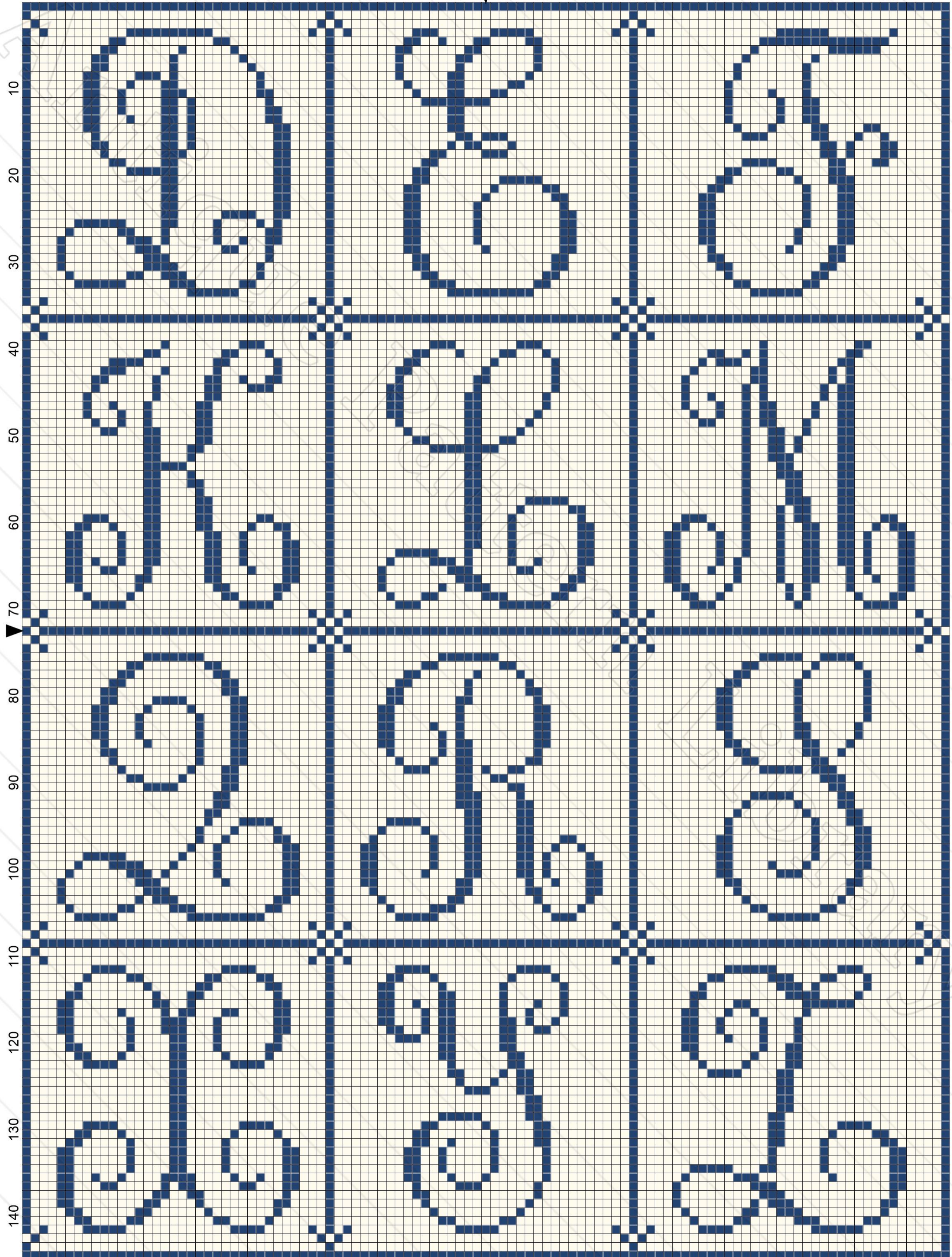
74, BOULEVARD

PARIS

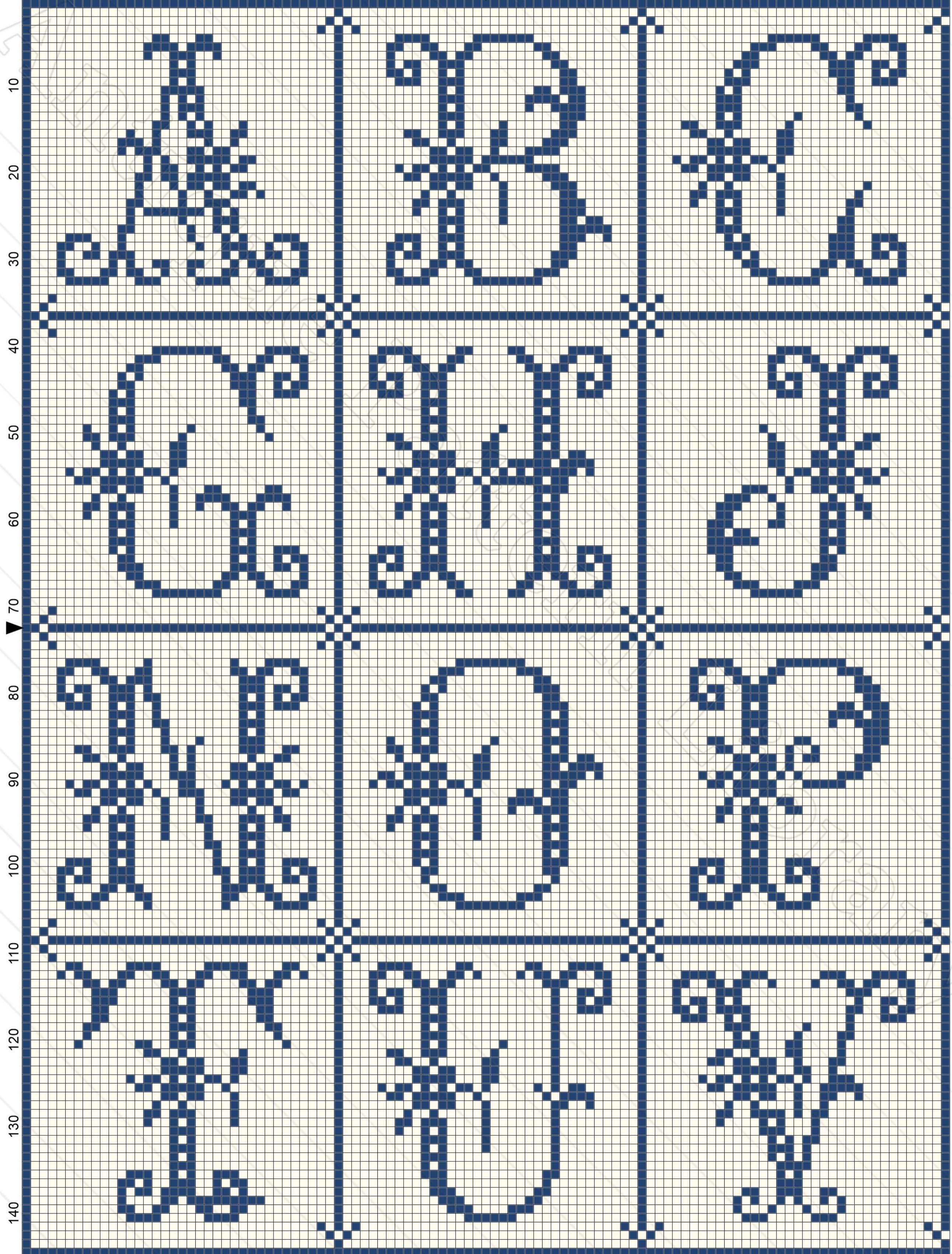
10 20 30 40 50 ▼ 60 70 80 90 100



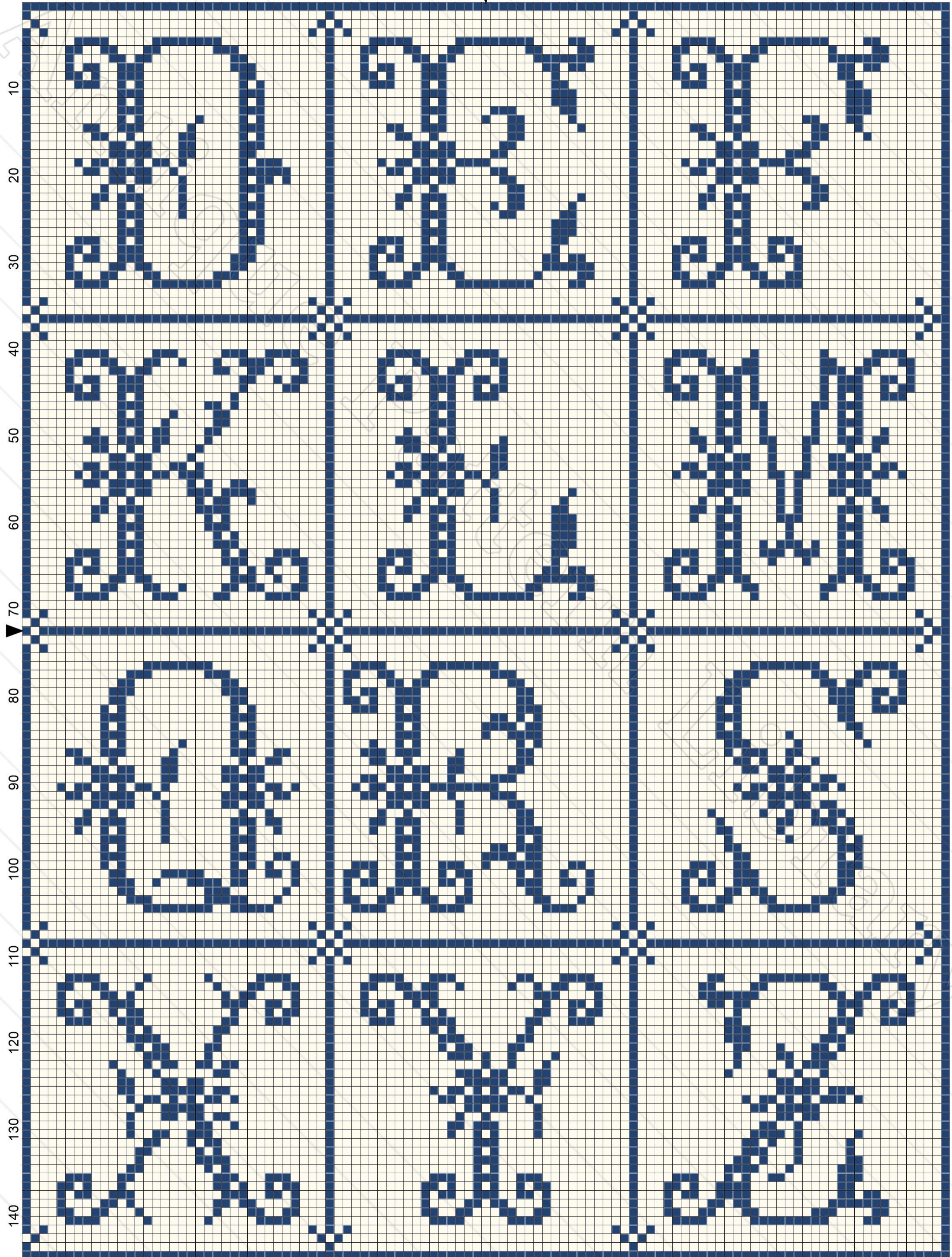
10 20 30 40 50 ▼ 60 70 80 90 100



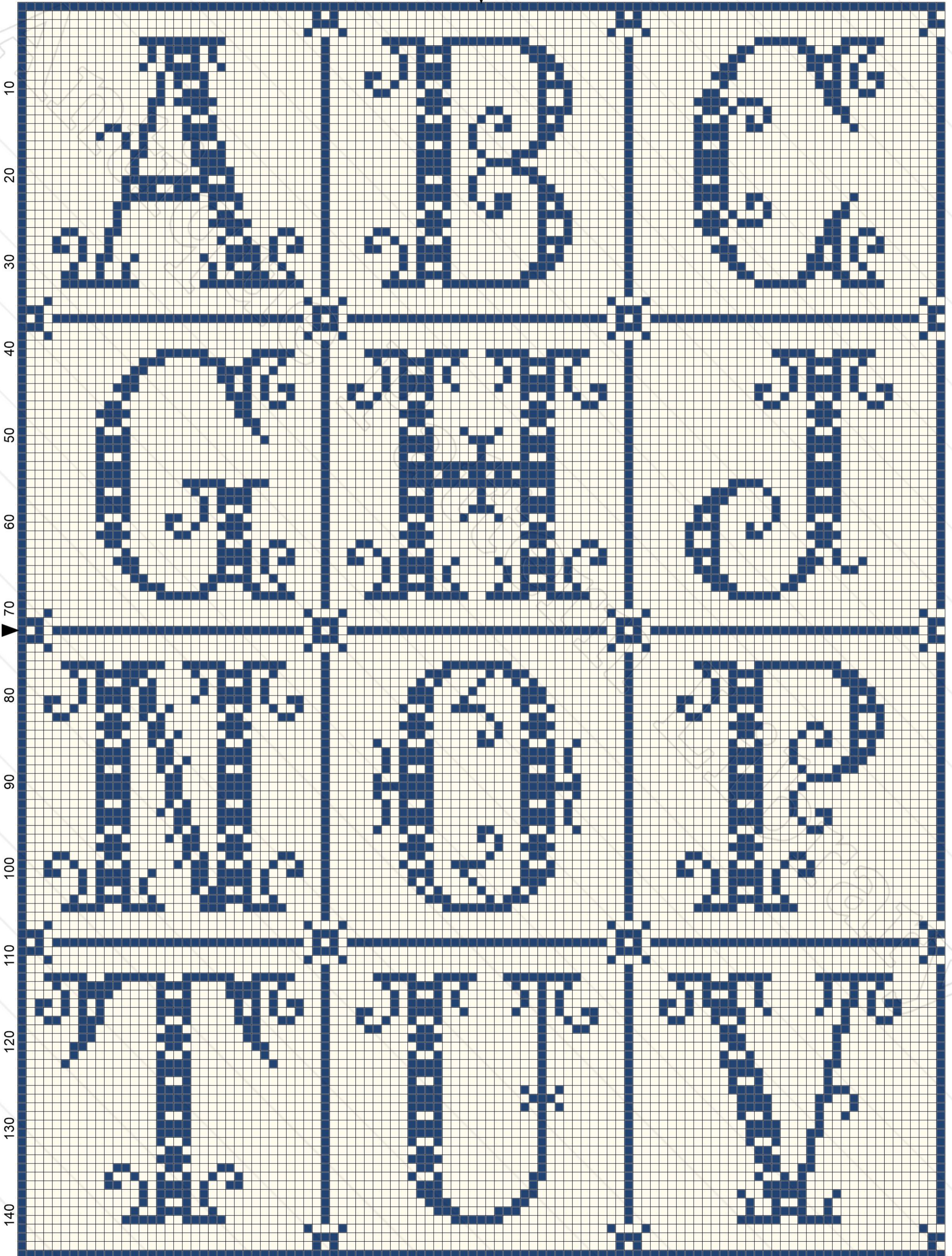
10 20 30 40 50 60 70 80 90 100



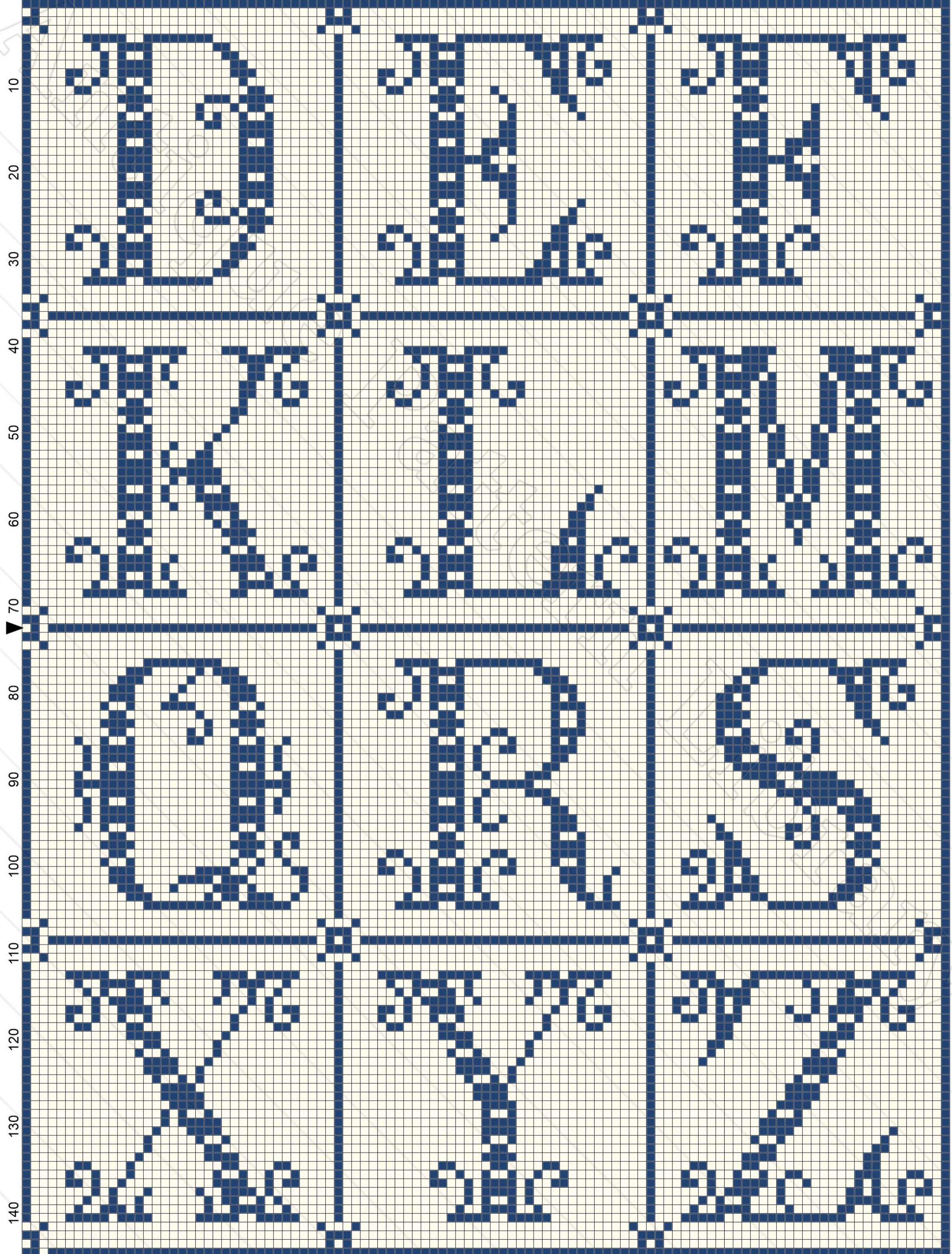
10 20 30 40 50 ▼ 60 70 80 90 100



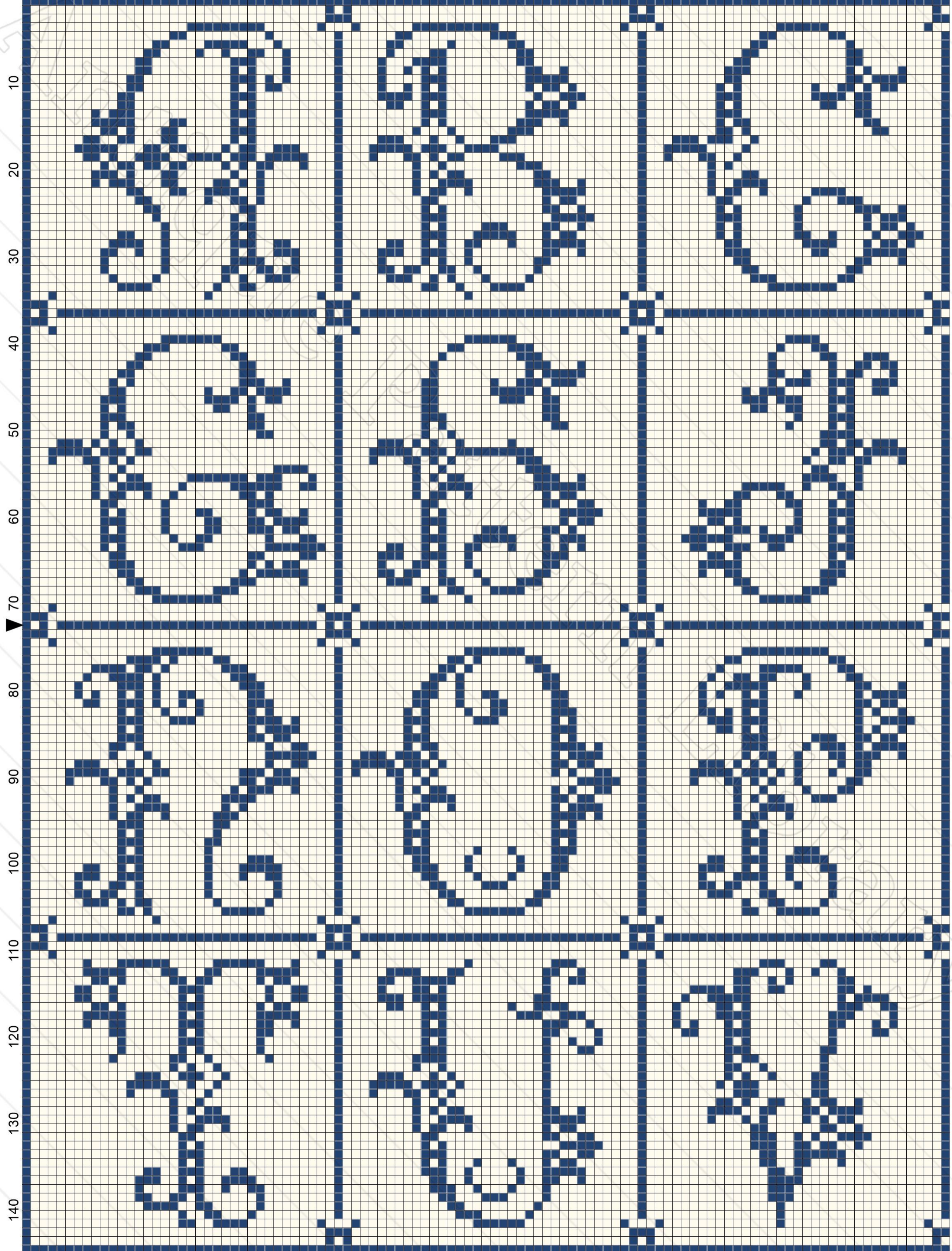
10 20 30 40 50 ▼ 60 70 80 90 100



10 20 30 40 50 ▼ 60 70 80 90 100



10 20 30 40 50 ▼ 60 70 80 90 100



10 20 30 40 50 ▼ 60 70 80 90 100

