

## The Antique Pattern Library

For more information, please see our website at: <http://www.antiquepatternlibrary.org>

THIS IS A SCAN OF AN ANTIQUE BOOK IN MY COLLECTION, AND I WANT IT TO BE AVAILABLE, FOR FREE, TO ANYONE WHO WANTS TO USE IT.

You may give copies away, you may not sell them.



This work is licensed under the **Creative Commons** Attribution-NonCommercial-ShareAlike License. To view a copy of this license, visit <http://creativecommons.org/licenses/by-nc-sa/2.5/> or send a letter to Creative Commons, 559 Nathan Abbott Way, Stanford, California 94305, USA.

This book is from the collection of Judith Combs

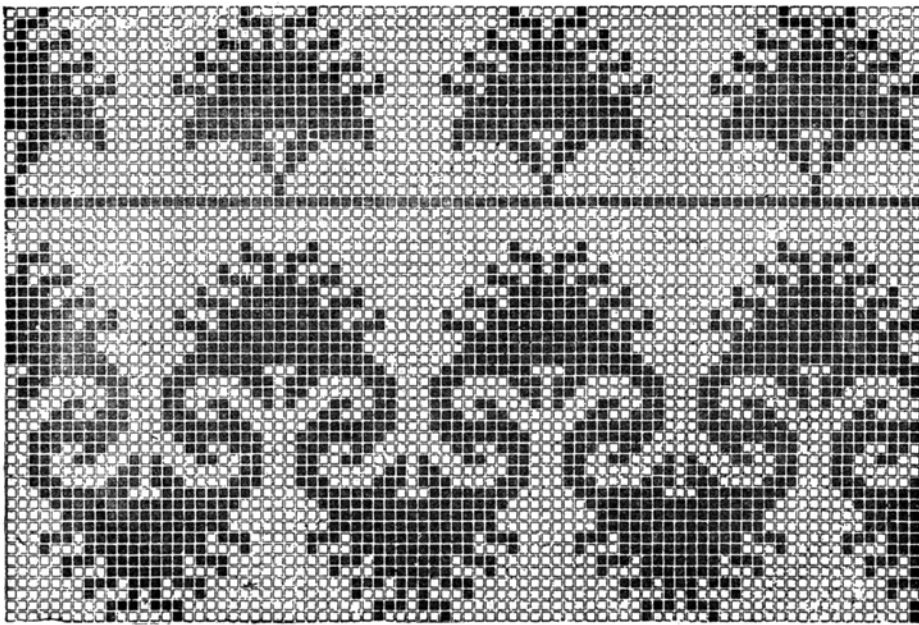


Fig. 146



Fig. 147

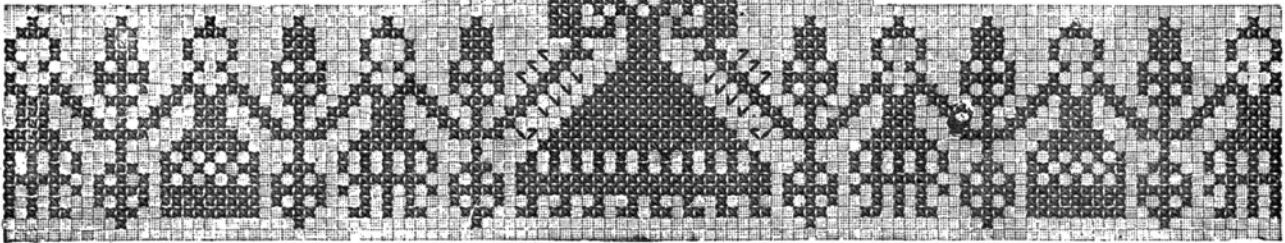
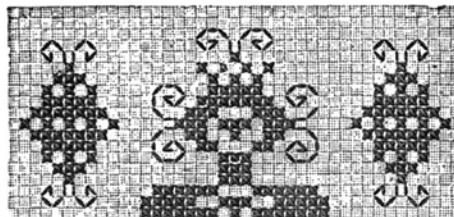


Fig. 148

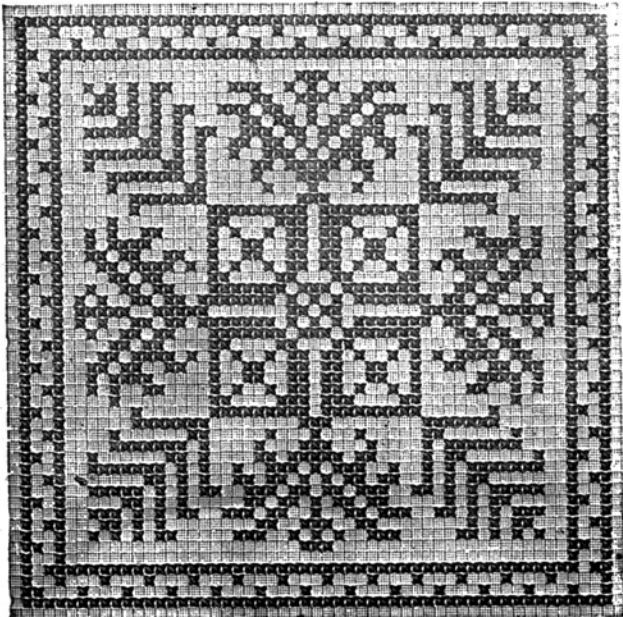


Fig. 149

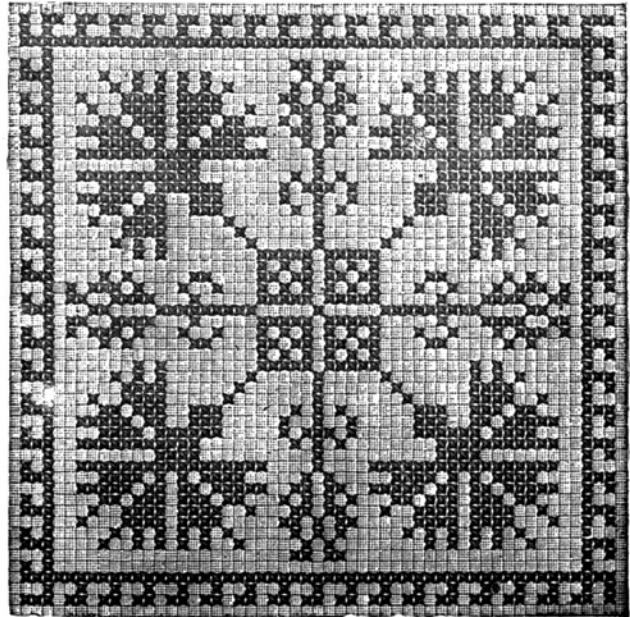
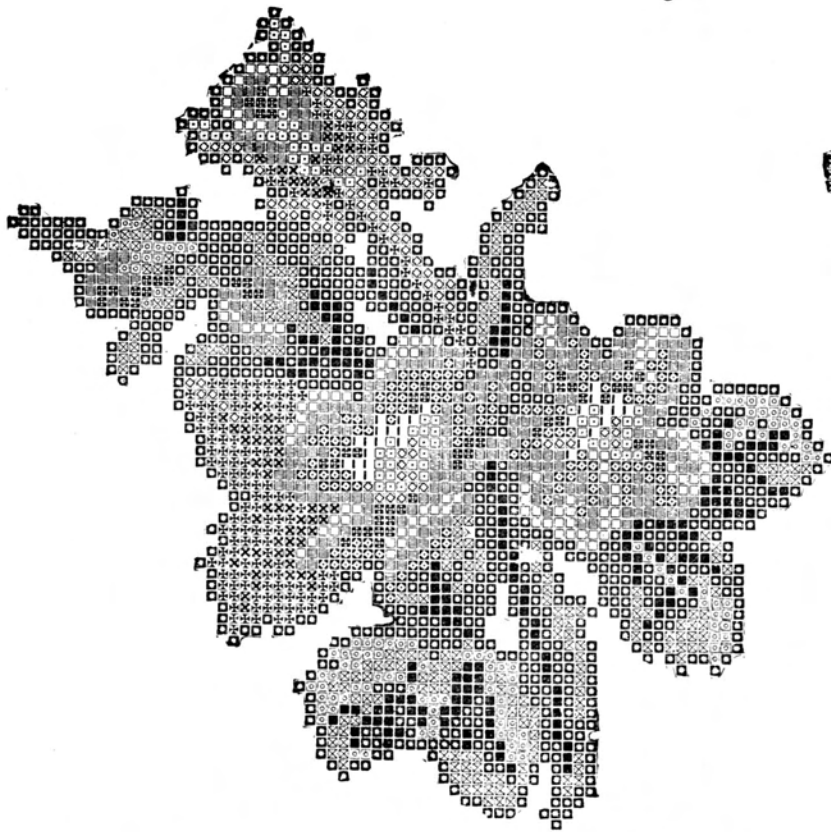
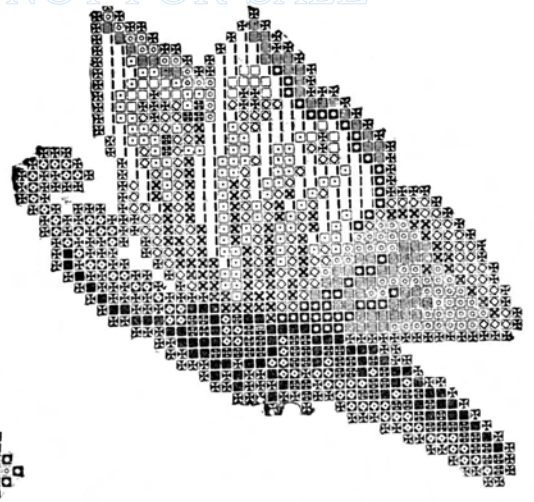


Fig. 150



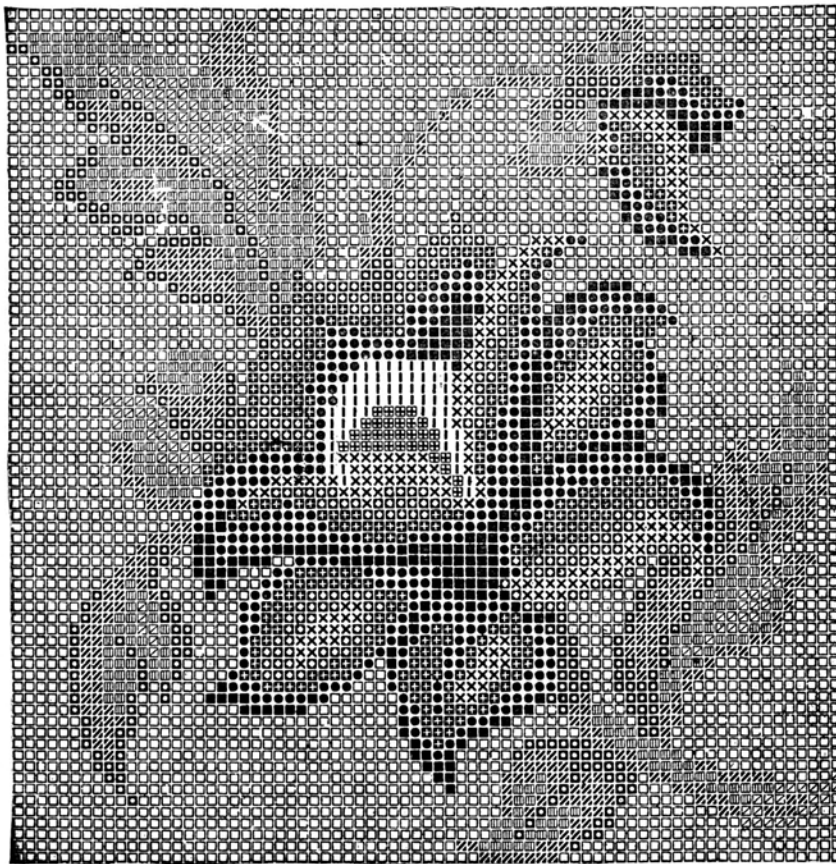
■ 1st, (Darkest), □ 2d, ▣ 3d, ⊕ 4th, (Lightest) Green. ■ 1st, (Darkest), ⊕ 3d, ▣ 3d, □ 4th, (Lightest) Red. × 1st, (Darkest), ▣ 2d, ⊕ 3d, ⊕ 4th, | 5th, (Lightest) Brown.

Fig. 151



■ 1st, (Darkest), □ 2d, ▣ 3d, ⊕ 4th, (Lightest) Blue. ■ Darl Brown. ⊕ Light Brown. □ Gray. | Yellow. × Dark Red. ⊕ Light Red. □ Pink. ▣ Olive Green.

Fig. 152



■ 1st, (Darkest) ● 2d, ▣ 3d, □ 4th, × 5th, (Lightest) Red. □ 1st, (Darkest), ▣ 2d, ▣ 3d, ⊕ 4th, (Lightest) Green. ▣ Dark Yellow. | Light Yellow.

Fig. 154

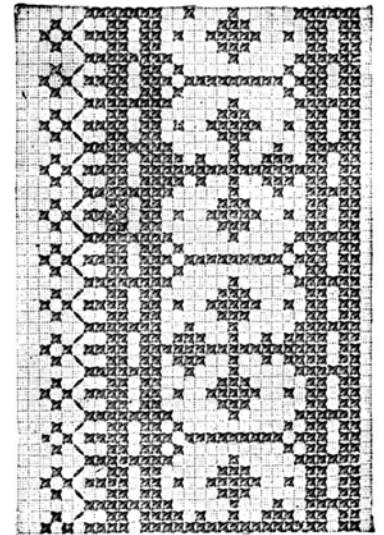


Fig. 153

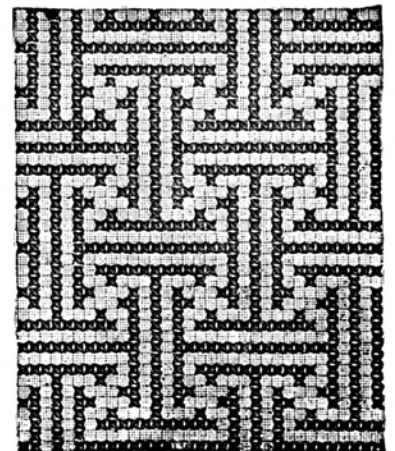


Fig. 155

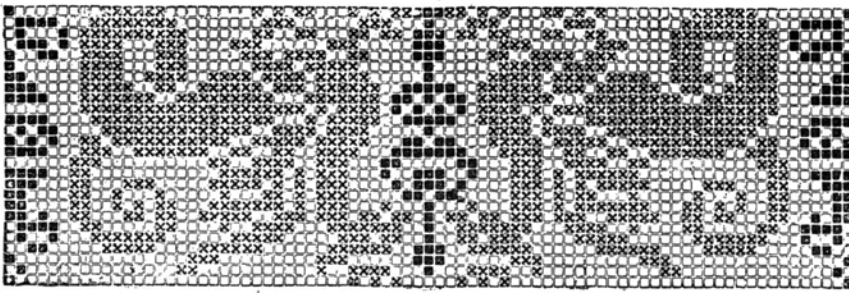


Fig. 156

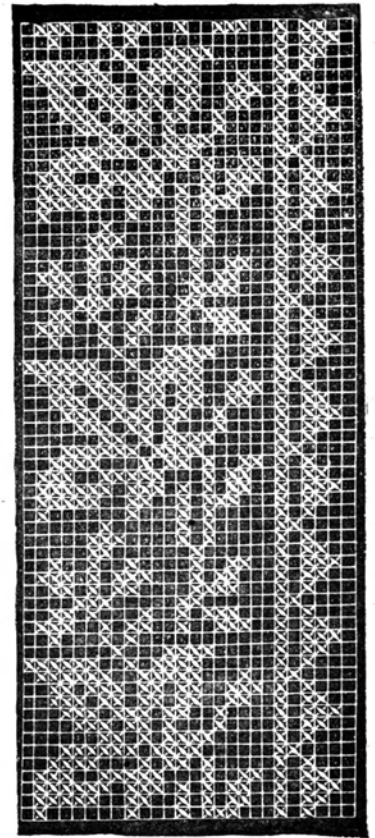


Fig. 159

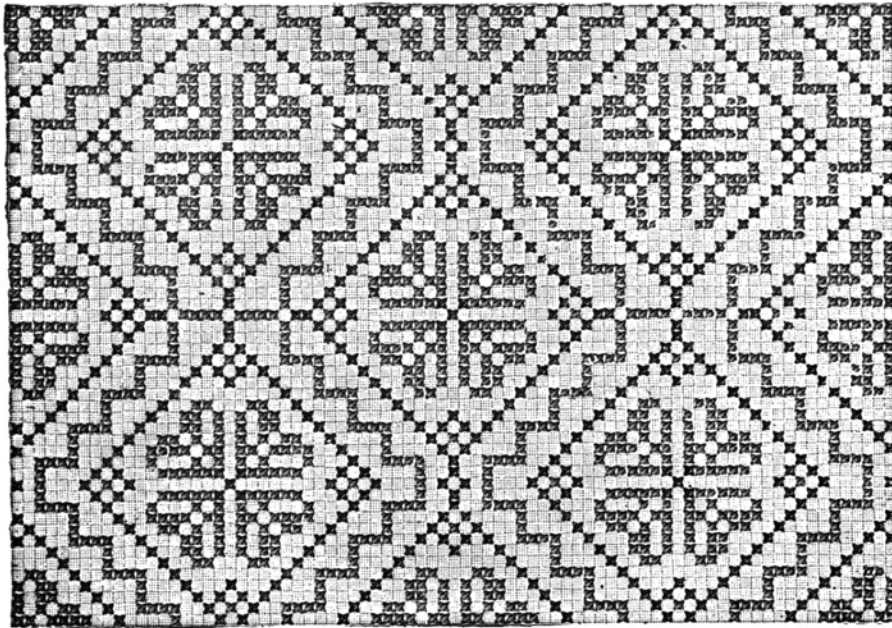


Fig. 157

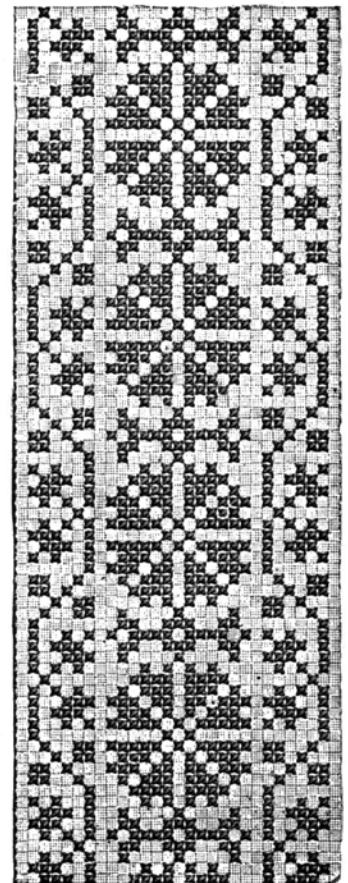


Fig. 160

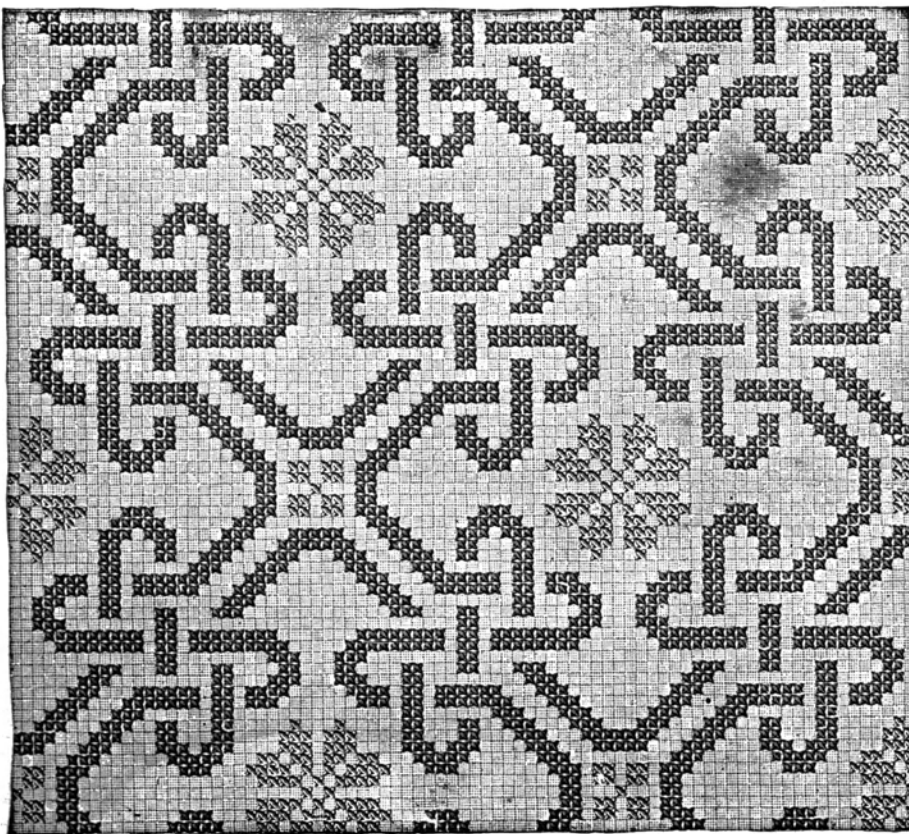


Fig. 158

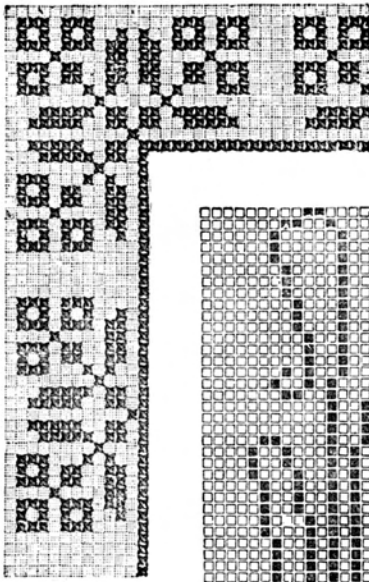


Fig. 161

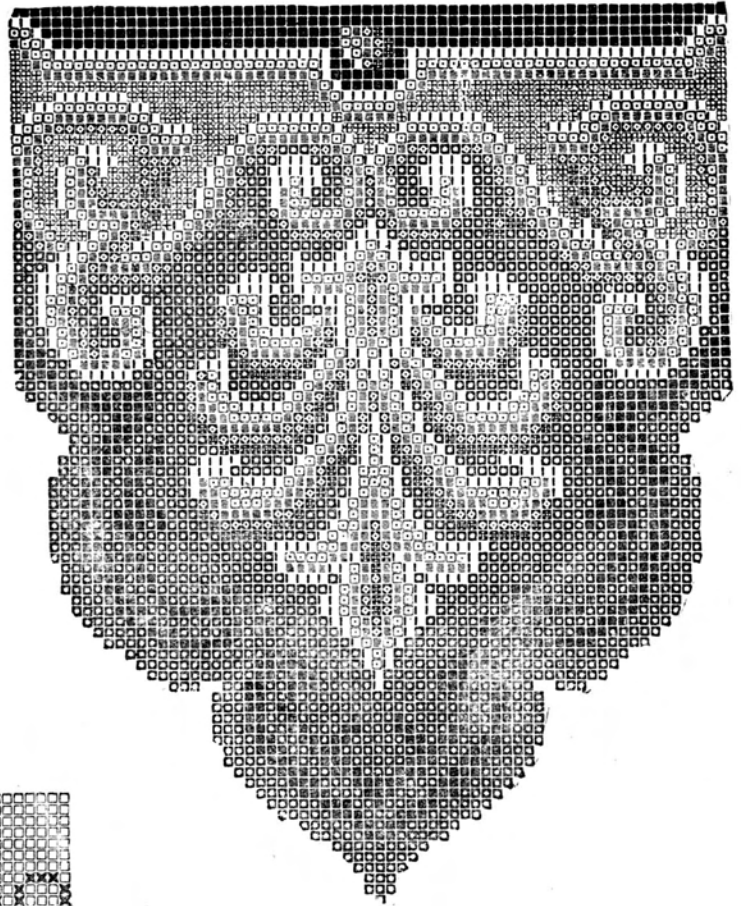
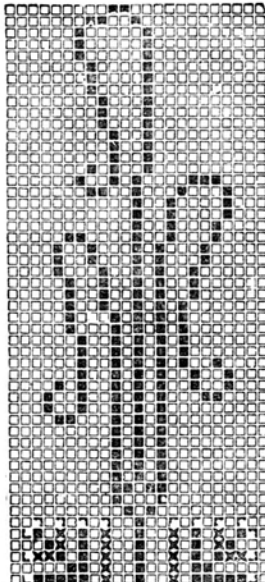
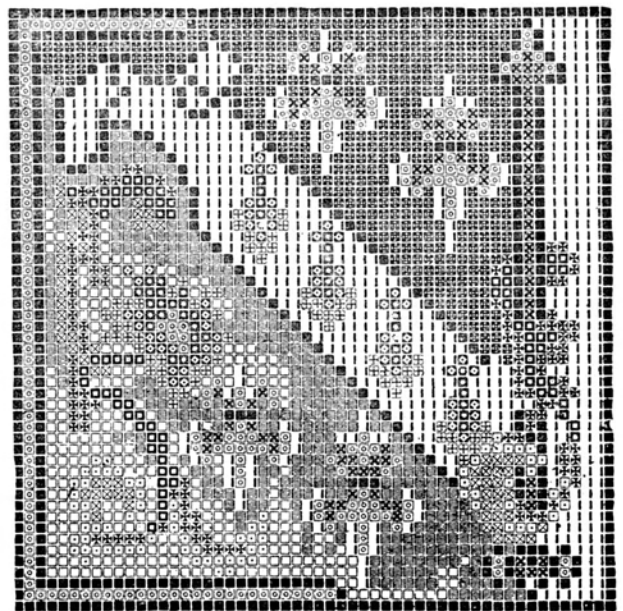
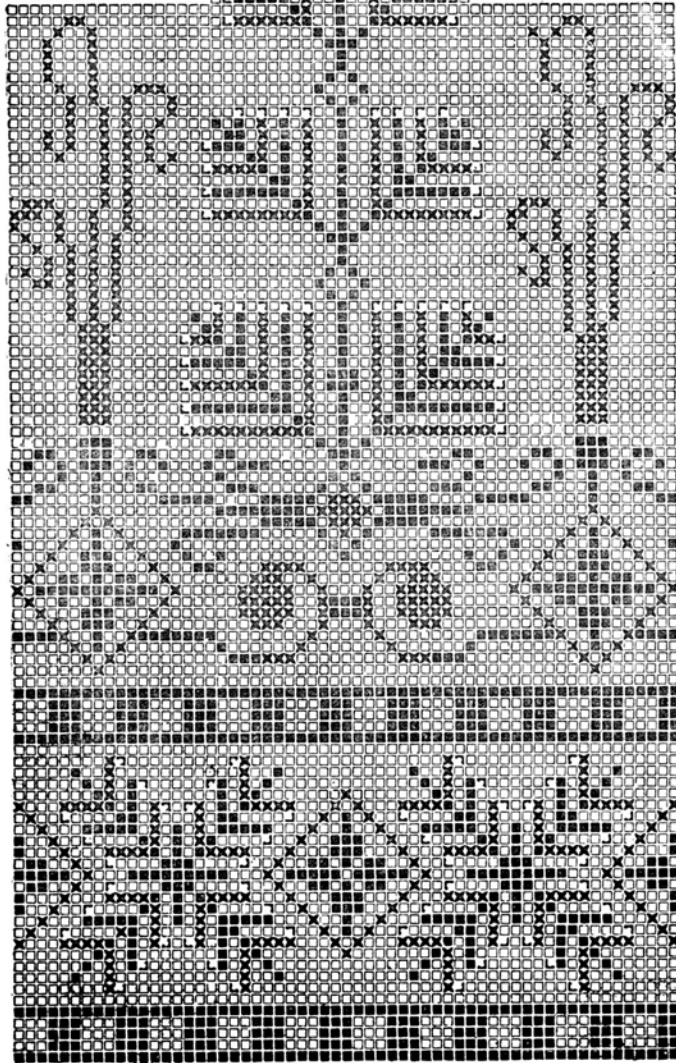


Fig. 163

■ 1st, (Darkest), □ 2d, ▣ 3d, (Lightest) Reddish-Brown. ■ 1st, (Darkest), □ 2d, ▣ 3d, ▤ 4th, | 5th, (Lightest) Fawn.

Fig. 162



■ 1st, (Darkest), ▣ 2d, □ 3d, (Lightest) Brown. ■ 1st, (Darkest), ▣ 2d, □ 3d, (Lightest) Blue. □ 1st, (Darkest), ▣ 2d, ▤ 3d, ▥ 4th, (Lightest) Green. □ 1st, (Darkest), ▣ 2d, ▤ 3d, (Lightest) Red. | Gray.

Fig. 164

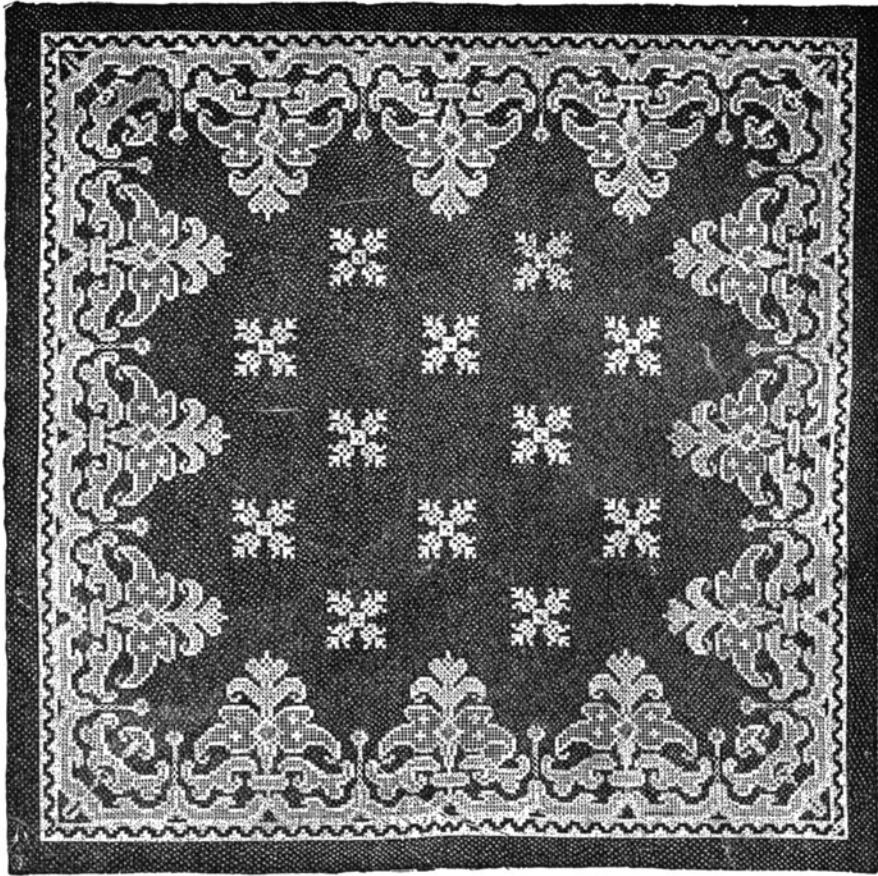


Fig. 165

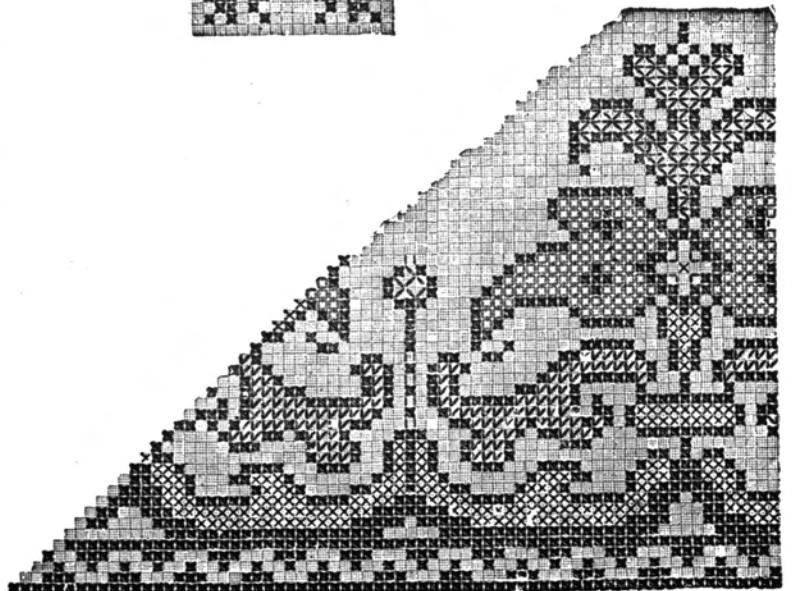
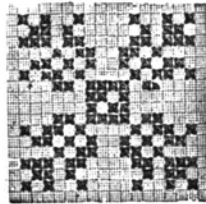
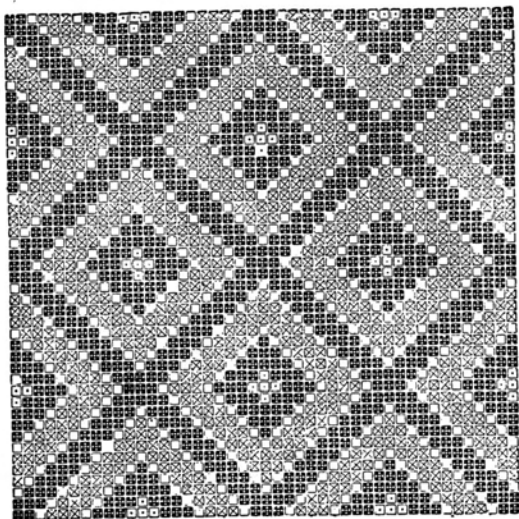


TABLE COVER IN CROSS-STITCH WITH DETAILS OF PATTERN



Fig. 166. CHAIR-BACK



■ Dark Green. □ Dark Red. □ Pink.  
DETAIL of Fig. 166

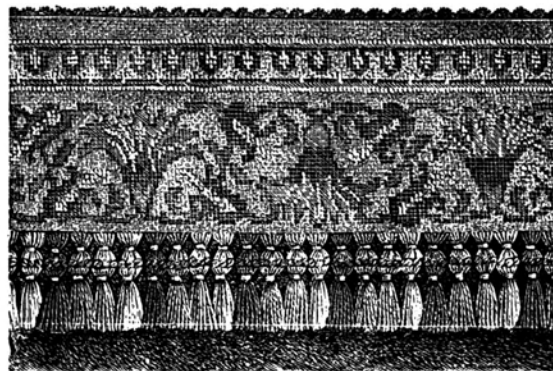
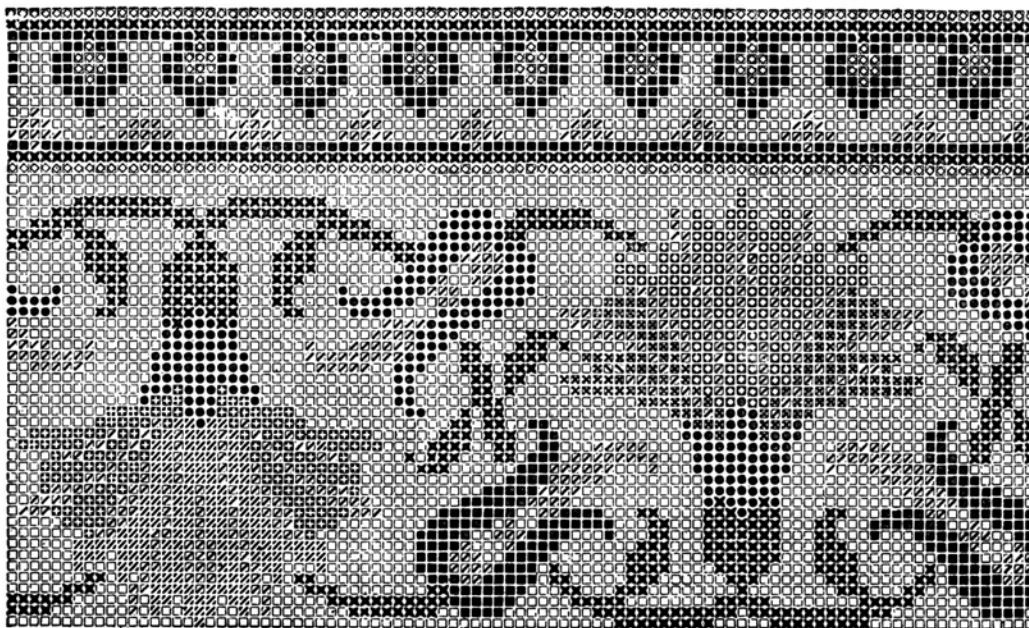


Fig. 167. MANTEL DRAPERY



DETAIL OF Fig. 167 ■ Dark Blue. × Green. □ Light Brown. ● Dark Brown. ⊕ Terra-cotta. ▣ Middle Blue  
⊘ Lightest Blue. ⊞ Yellow. □ Pink.

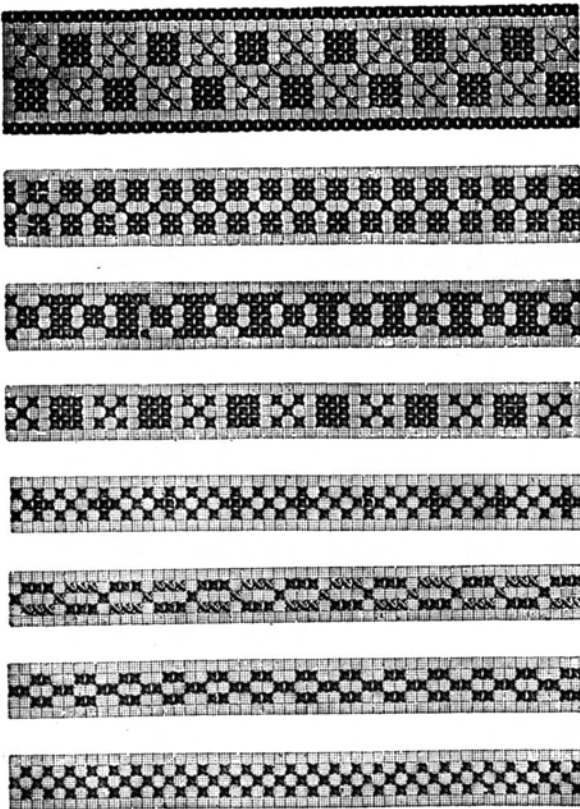


Fig. 108. BORDERS

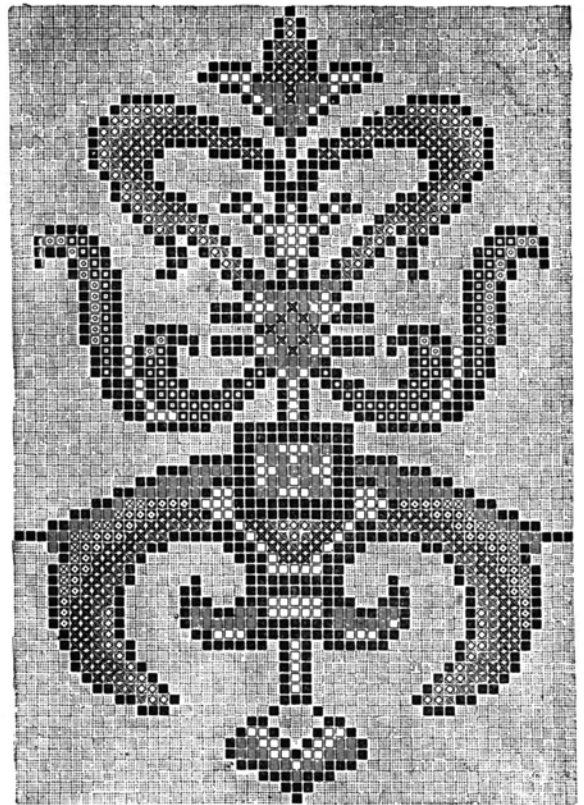


Fig. 169

■ Black, 1st, (Darkest), ■ 2d, □ 3d, (Lightest) Olive Green. □ 1st, (Darkest), □ 2d, □ 3d, (Lightest) Bronze. ✕ 1st, (Darkest), ✕ 2d, □ 3d, (Lightest) Pink. □ Yellow.

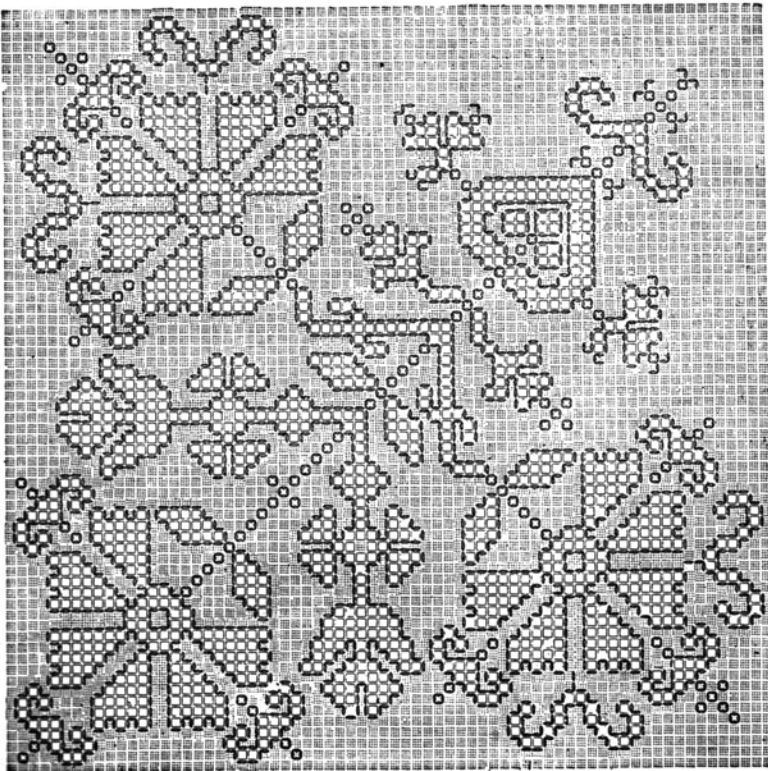
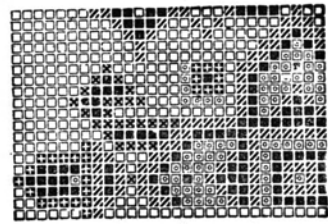


Fig. 170



■ Dark Blue ✕ Green □ White  
 ■ Bronze □ Dark Green

DETAIL of Fig. 171



Fig. 171. NEWSPAPER HOLDE



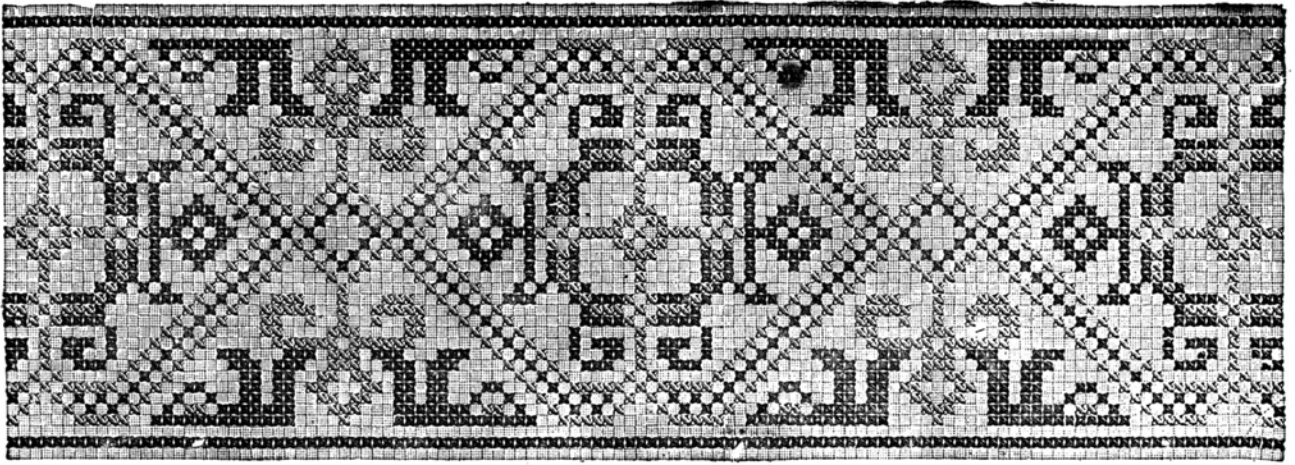
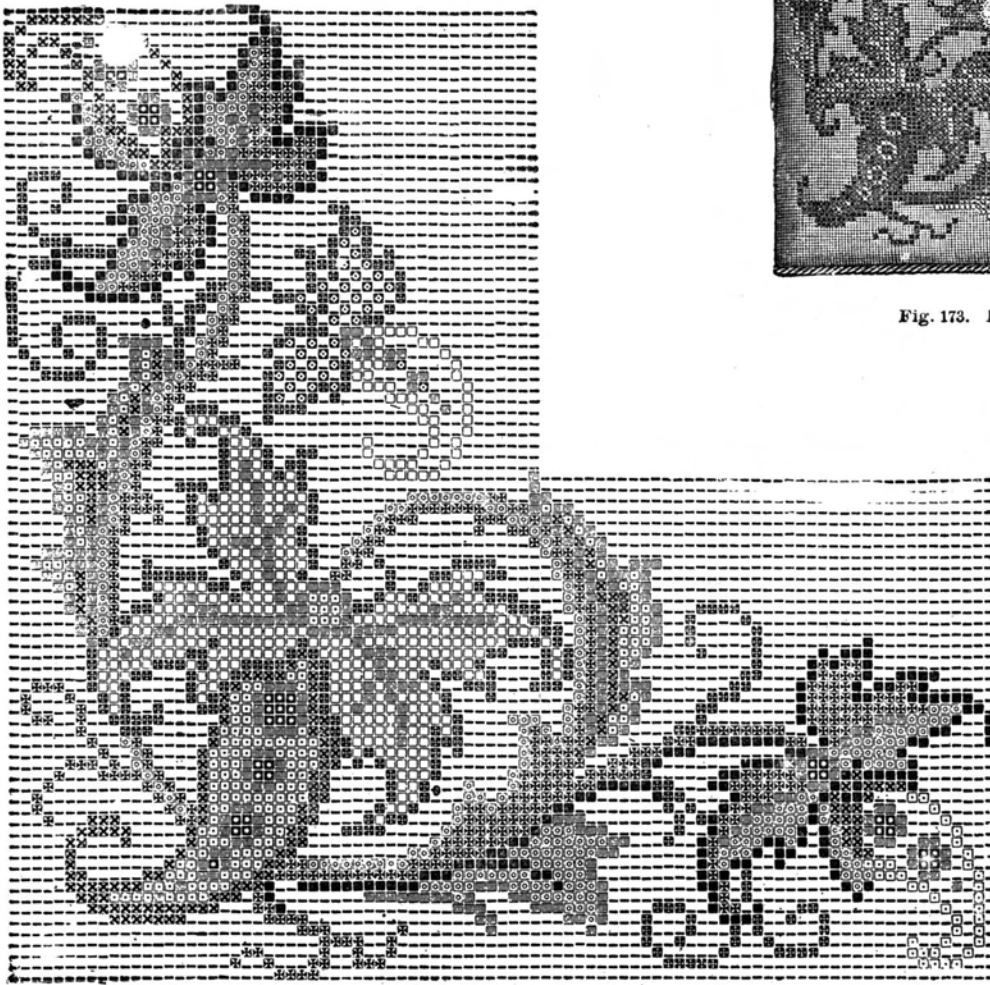


Fig. 172



Fig. 173. HANDKERCHIEF SACHET



■ Dark Brown. □ Light Brown. ■ 1st, (Darkest). □ 2d, □ 3d, (Lightest) Green. ■ Pink. □ Light Pink. ■ Dark Blue.  
□ Light Blue. ■ Gold

DETAIL of Fig. 173

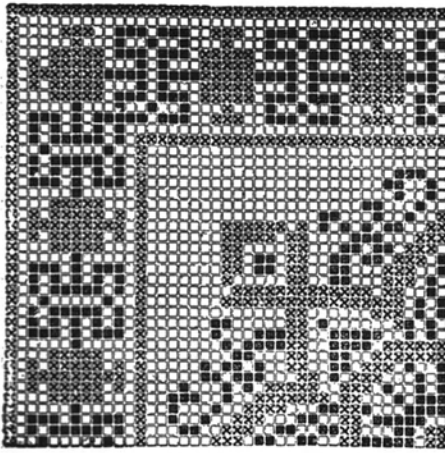


Fig. 174

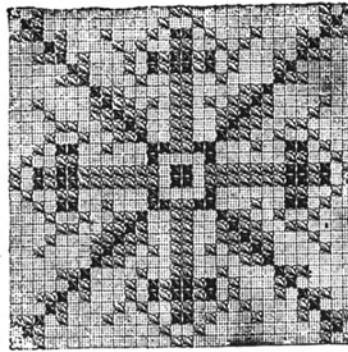


Fig. 175

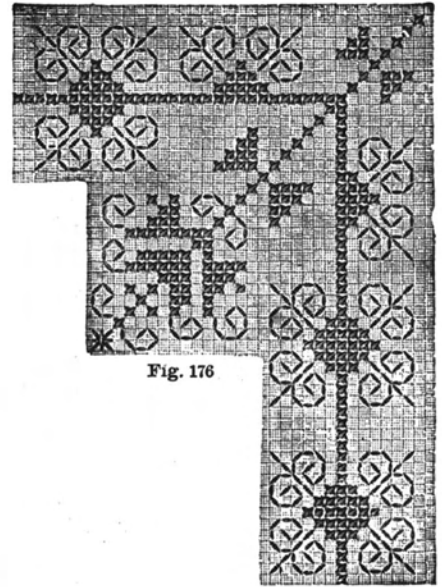


Fig. 176

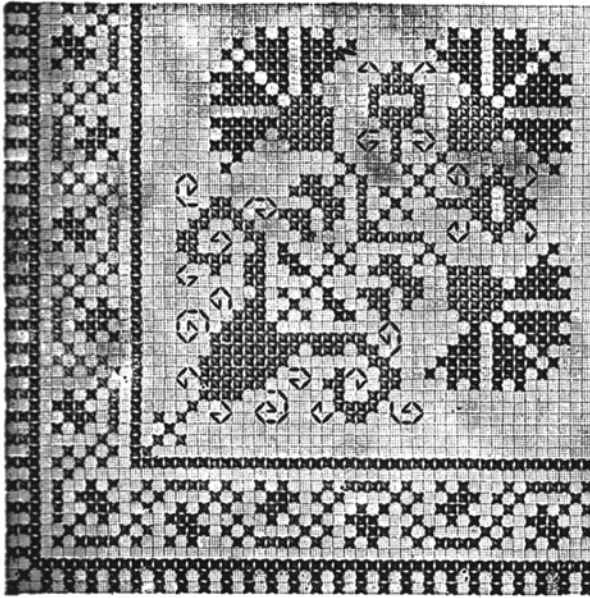


Fig. 177

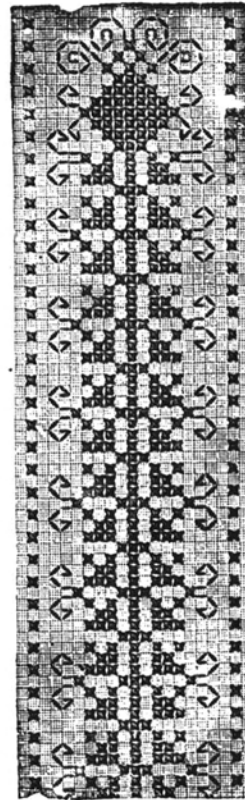


Fig. 178

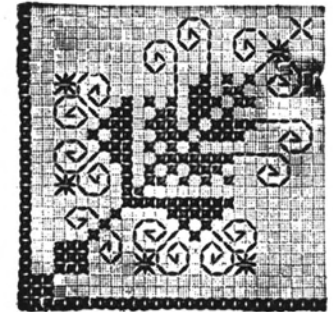


Fig. 179

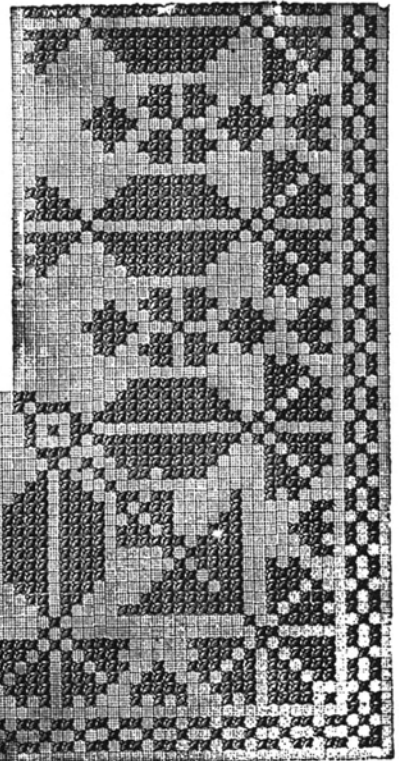
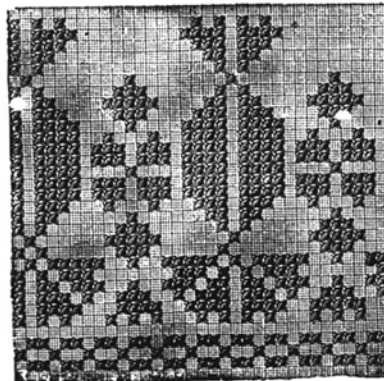


Fig. 181



Fig. 180



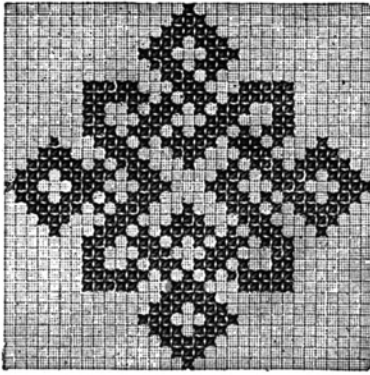


Fig. 182

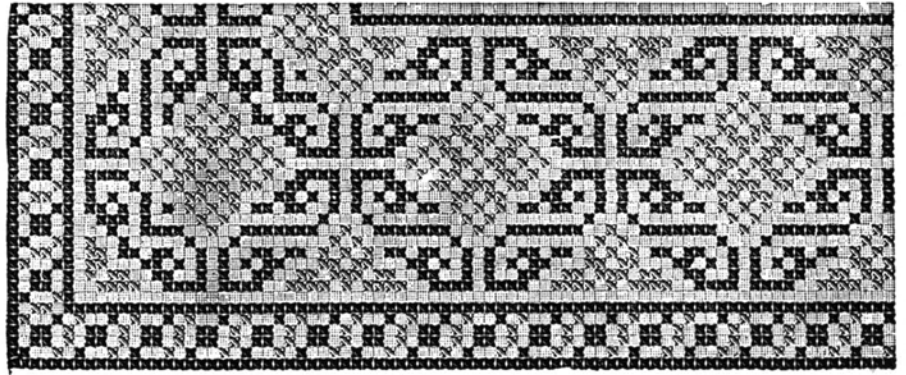
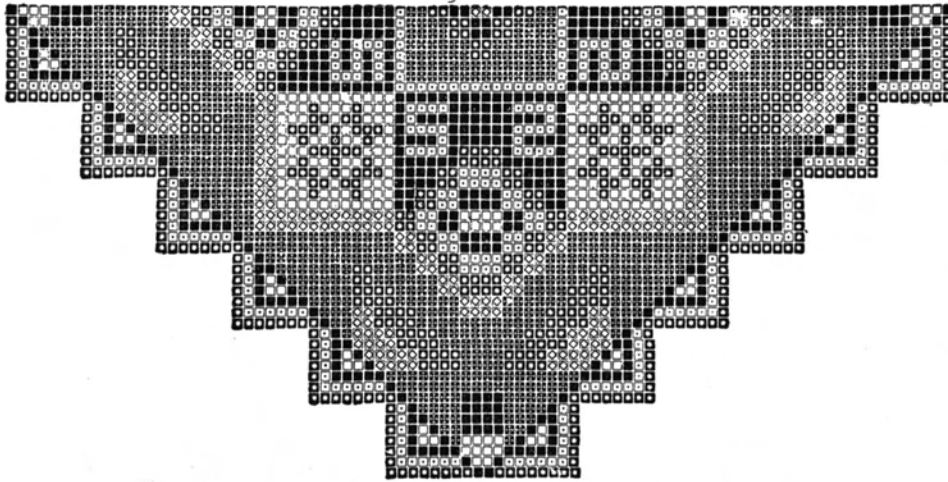


Fig. 183



■ Red. ■ Green. ■ Dark Yellow. □ Light Yellow. □ Old Blue. ■ Ground.

DETAIL of Fig. 186

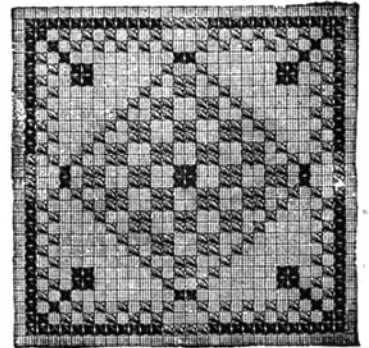


Fig. 184

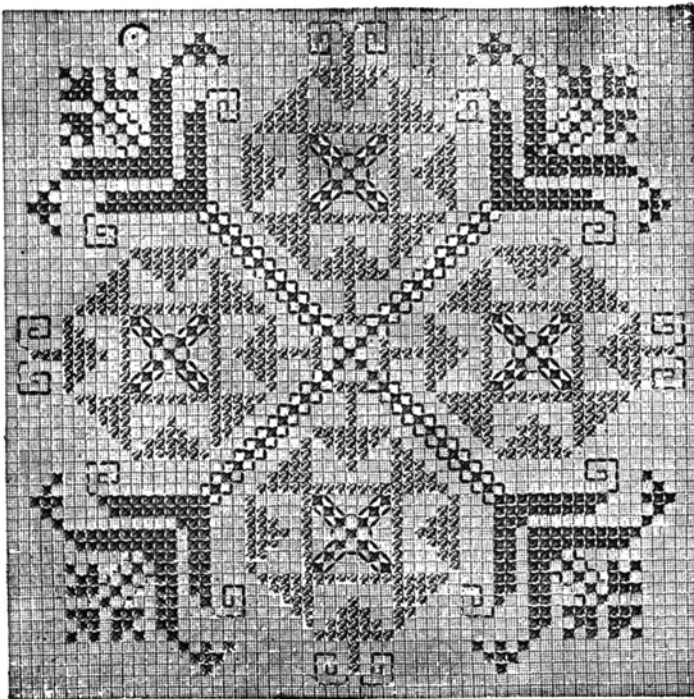


Fig. 185



Fig. 186. CHAIR-BACK

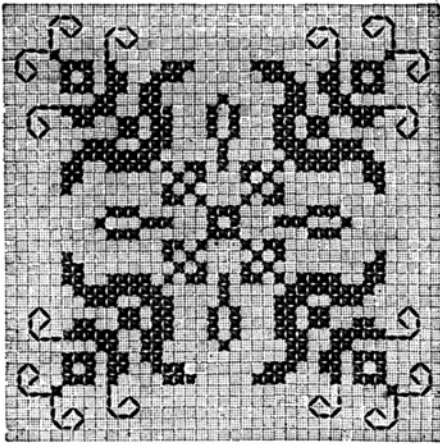


Fig. 187

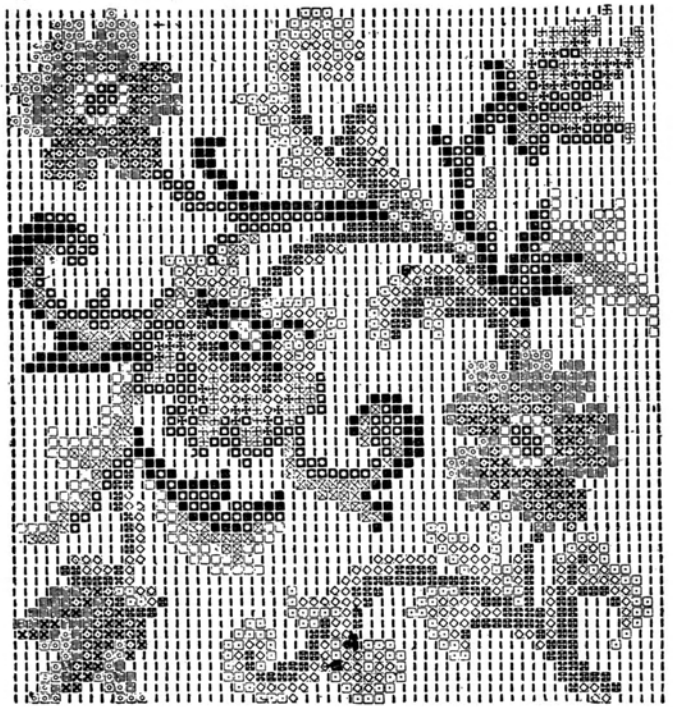
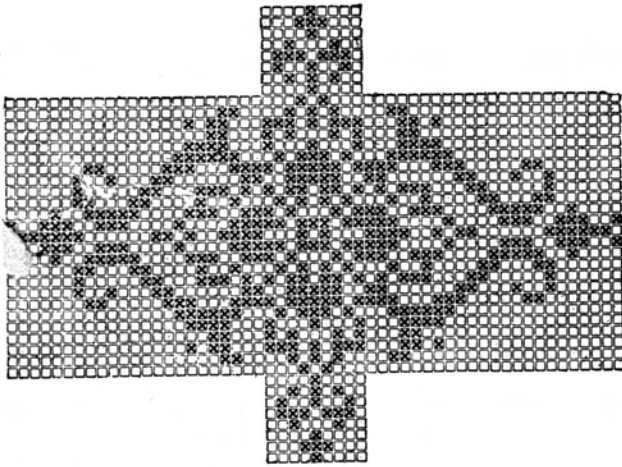
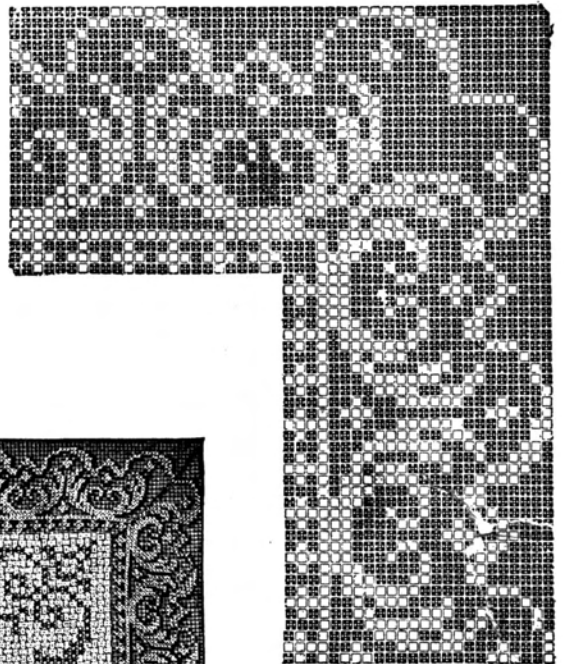


Fig. 188



DETAIL of Fig. 189



DETAIL of Fig. 189

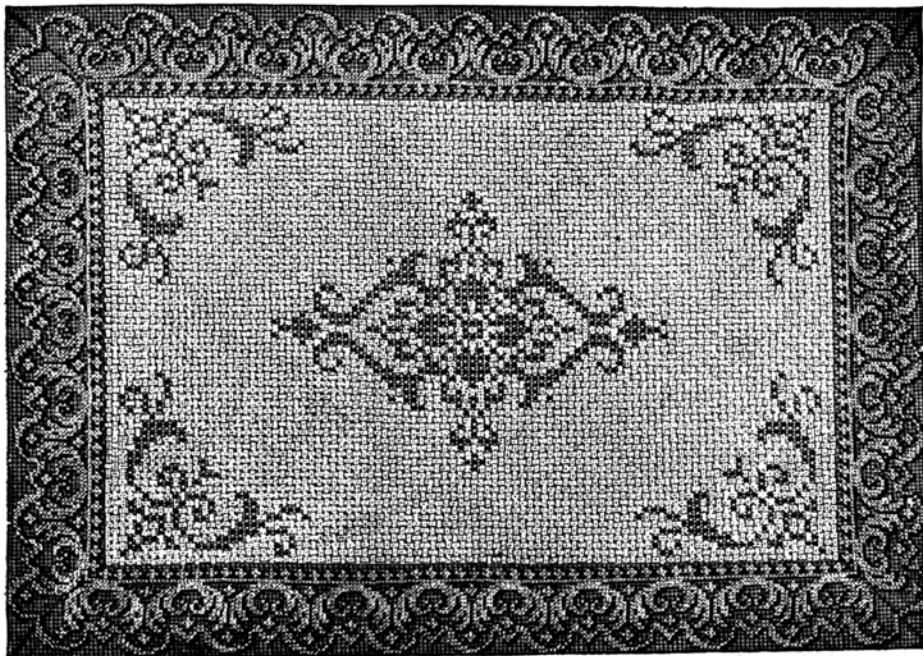
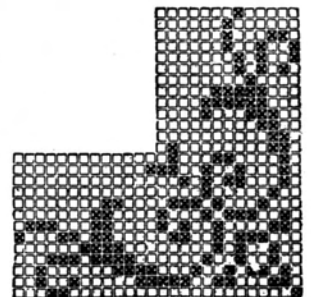


Fig. 189. CANVAS RUG



DETAIL of Fig. 189



Fig. 190. SOFA CUSHION

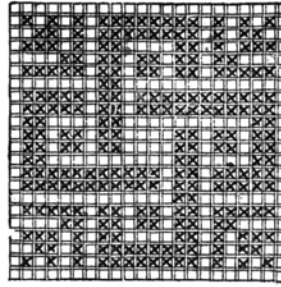


Fig. 191

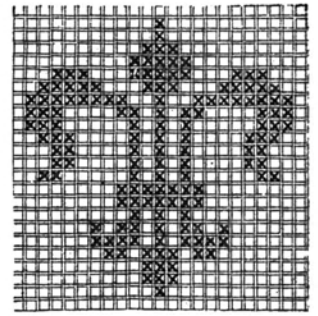
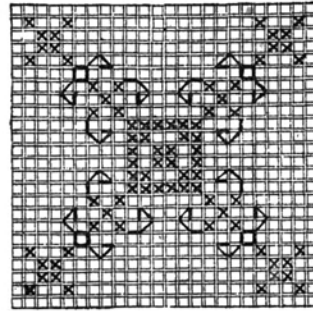


Fig. 192



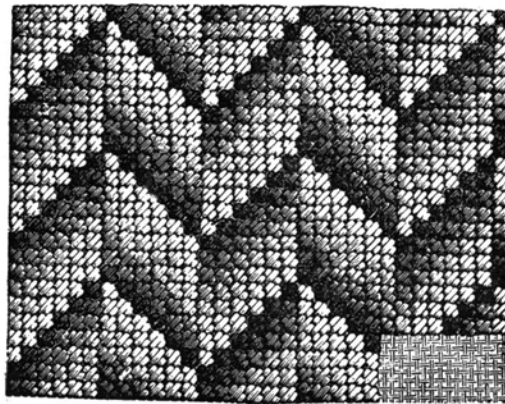
DETAIL of Fig. 190



Fig. 193



Fig. 195



DETAIL of Fig. 195

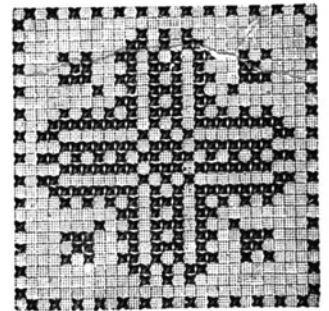


Fig. 194

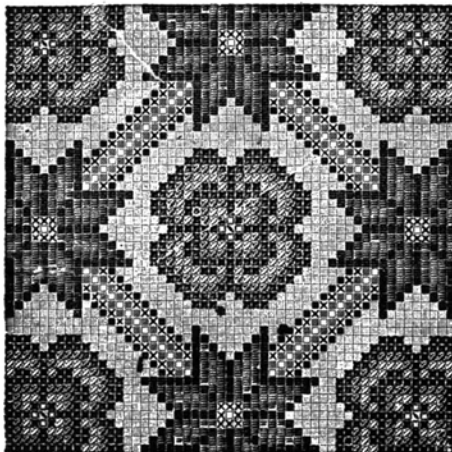


Fig. 196

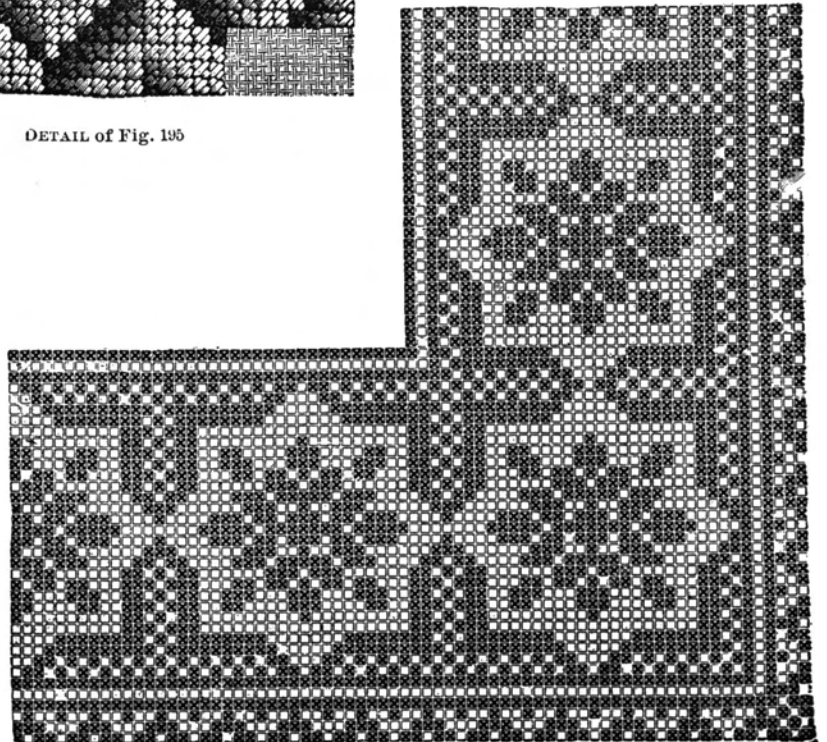


Fig. 197