

The Antique Pattern Library

For more information, please see our website at: <http://www.antiquepatternlibrary.org>

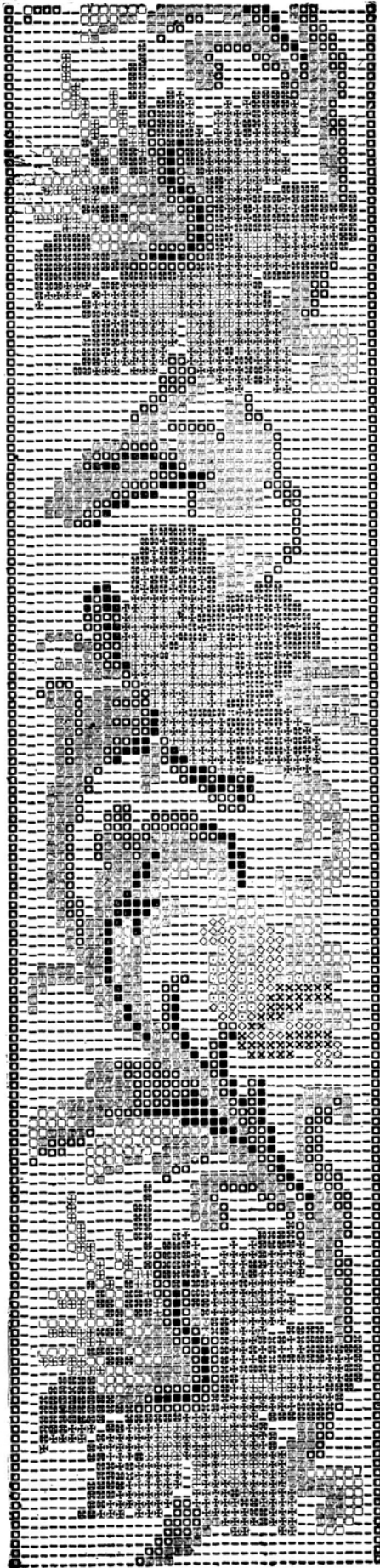
THIS IS A SCAN OF AN ANTIQUE BOOK IN MY COLLECTION, AND I WANT IT TO BE AVAILABLE, FOR FREE, TO ANYONE WHO WANTS TO USE IT.

You may give copies away, you may not sell them.



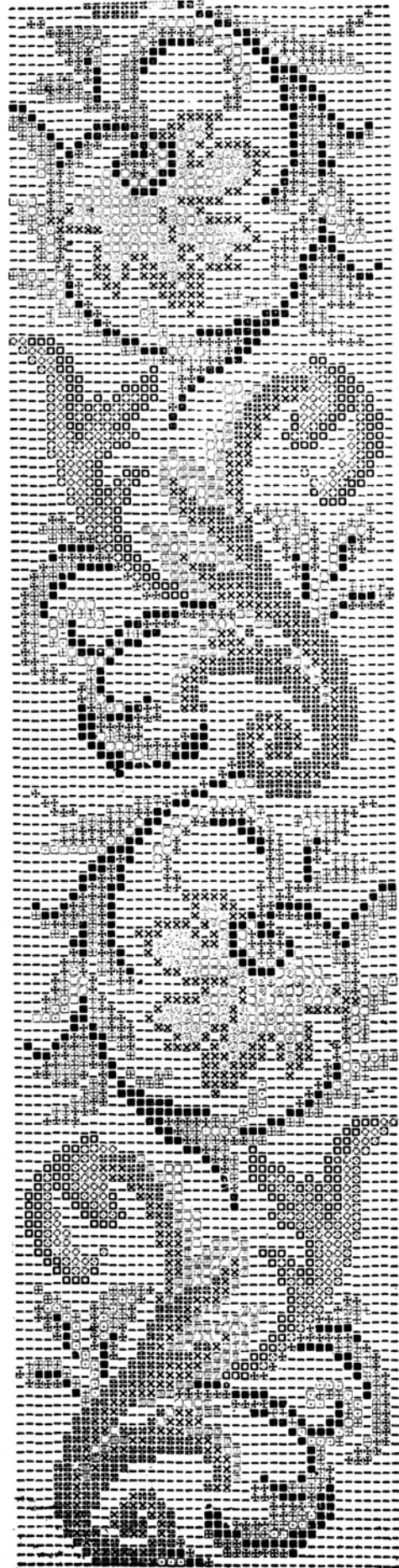
This work is licensed under the **Creative Commons** Attribution-NonCommercial-ShareAlike License. To view a copy of this license, visit <http://creativecommons.org/licenses/by-nc-sa/2.5/> or send a letter to Creative Commons, 559 Nathan Abbott Way, Stanford, California 94305, USA.

This book is from the collection of Judith Combs



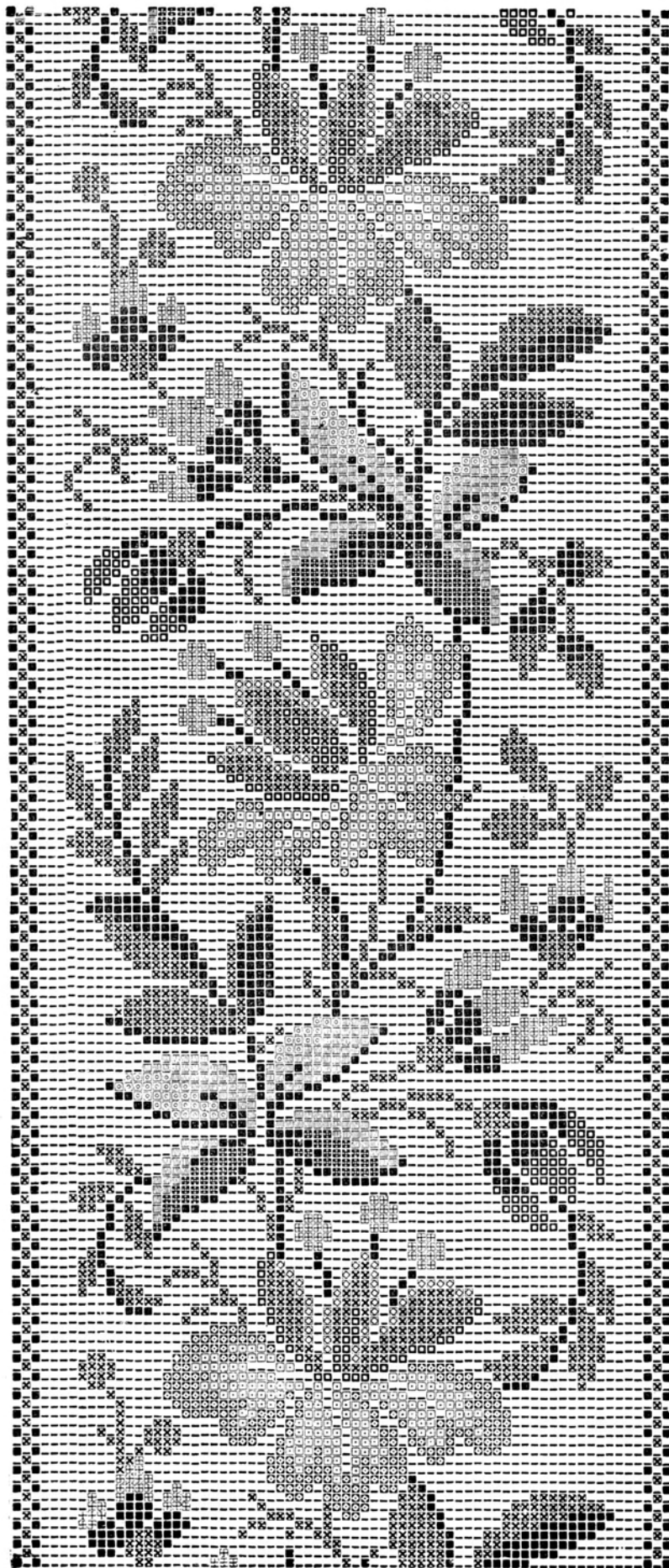
■ Dark Brown. □ Bronze Brown. ▣ Dark Gray. □ Light Gray. ⊗ 1st, (Darkest), ⊗ 2d, ⊕ 3d, (Lightest) Blue. ⊗ 1st, (Darkest), ⊗ 2d, ⊕ 3d, (Lightest) Red. □ Olive Green. | White, (Ground)

Fig. 98



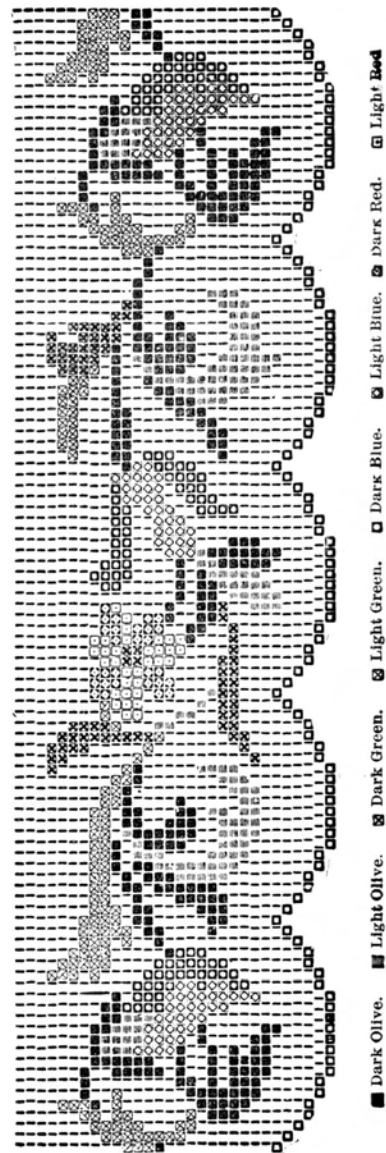
■ 1st, (Darkest), ⊗ 2d, ⊕ 3d, (Darkest), ⊗ 3d, ⊕ 4th, (Lightest) Green. □ 1st, (Darkest), ⊗ 2d, ⊕ 3d, (Lightest) Blue. | Ground.

Fig. 99



■ 1st, (Darkest), Brown. □ 34, (Lightest) Olive Green. □ 21, (Darkest), Dark Blue. □ 34, (Lightest) Wood
 □ 21, (Darkest), Dark Blue. □ Light Blue. □ Ground.

Fig. 100



■ Dark Olive. ■ Light Olive. ■ Dark Green. ■ Light Green. □ Dark Blue. □ Light Blue. ■ Dark Red. □ Light Red.

Fig. 101

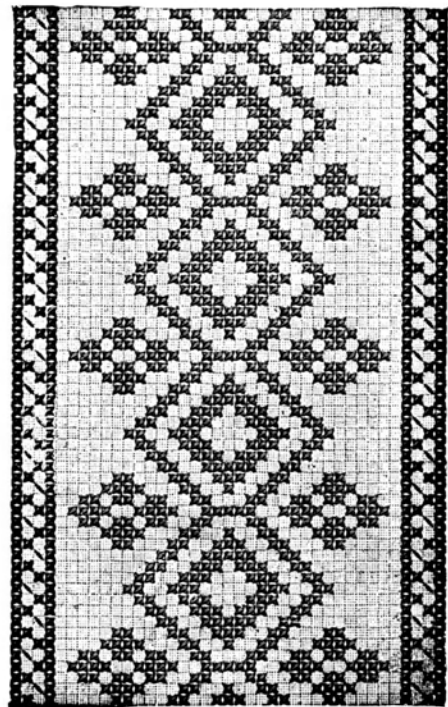


Fig. 102

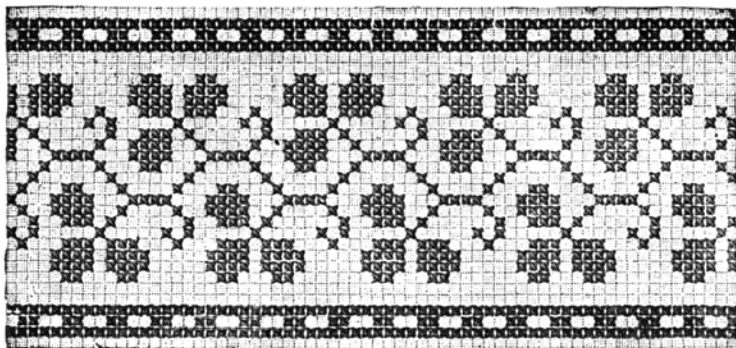


Fig. 103

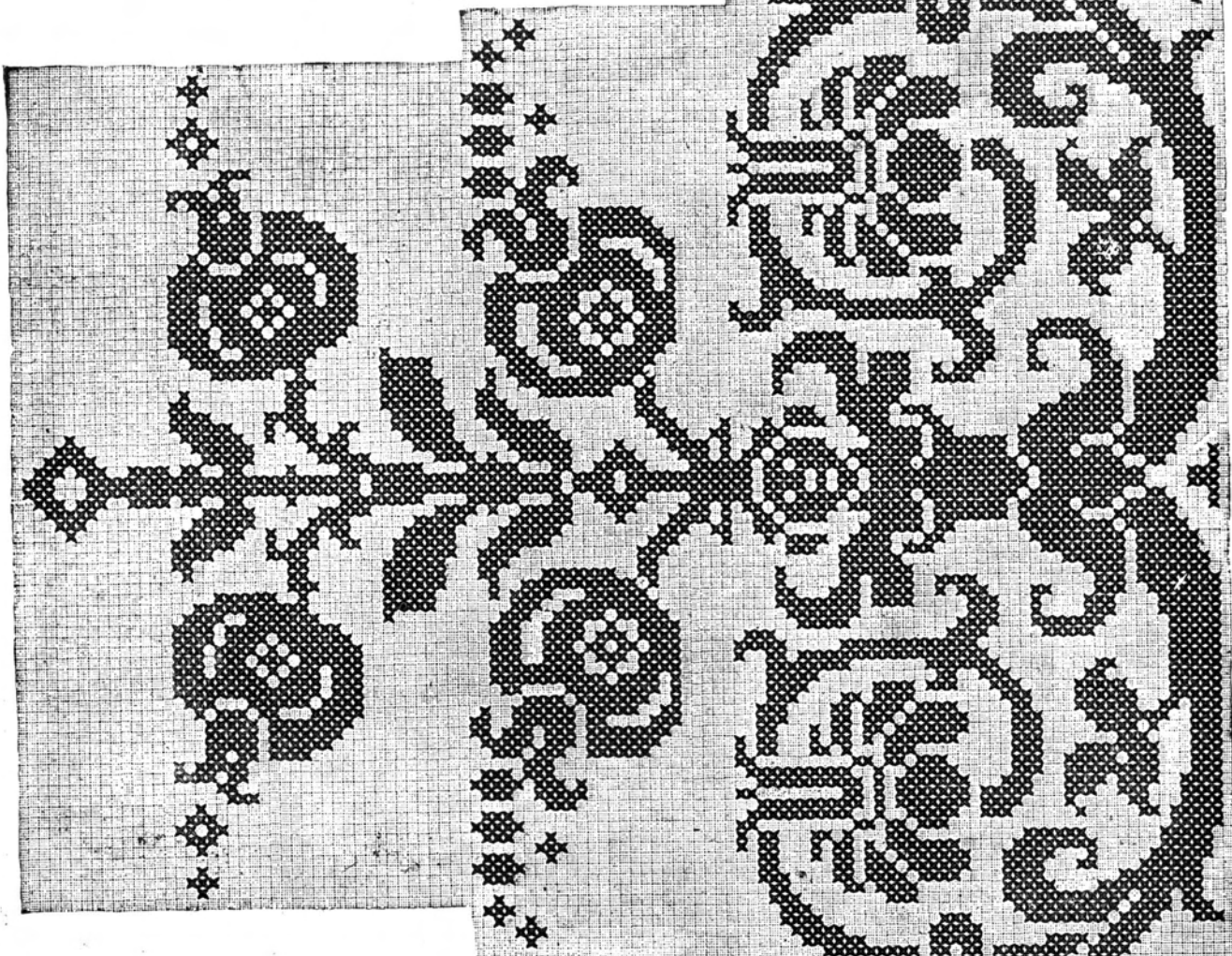


Fig. 104

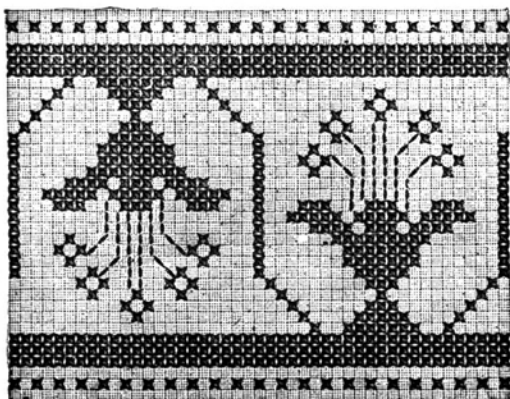


Fig. 105

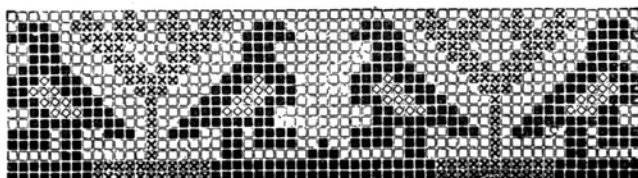
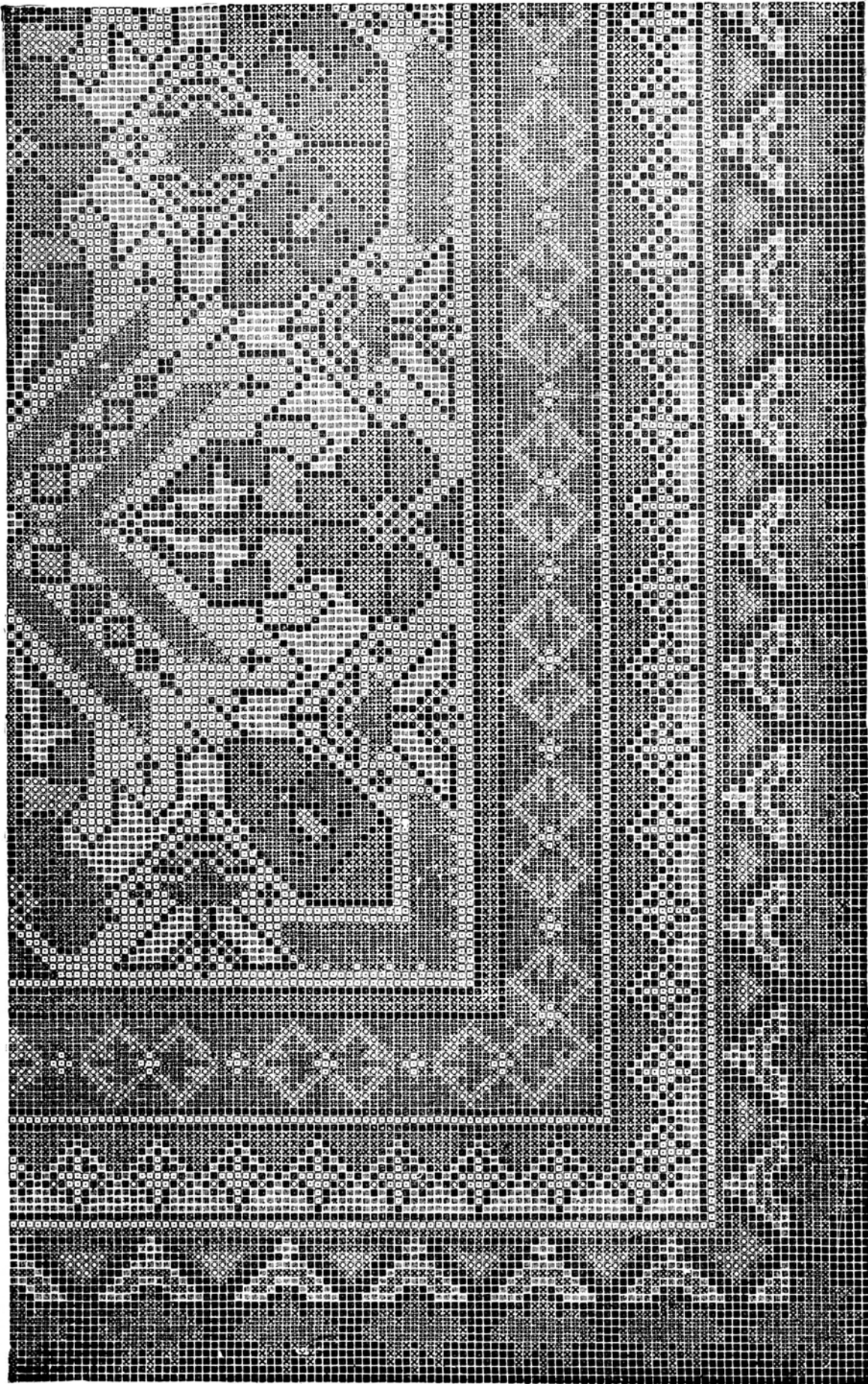


Fig. 106



■ Black, □ Corn Color, ■ Peacock Blue, □ Bronze, ⊗ Maroon, ■ Olive,
Fig. 107

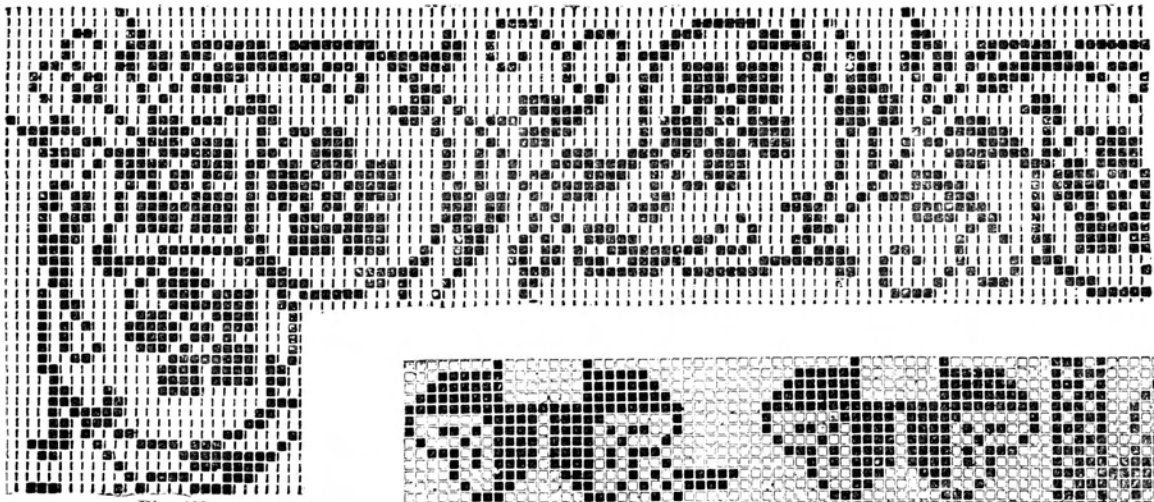


Fig. 108.

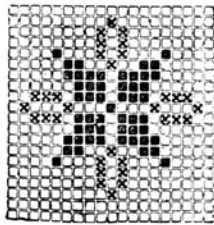


Fig. 109

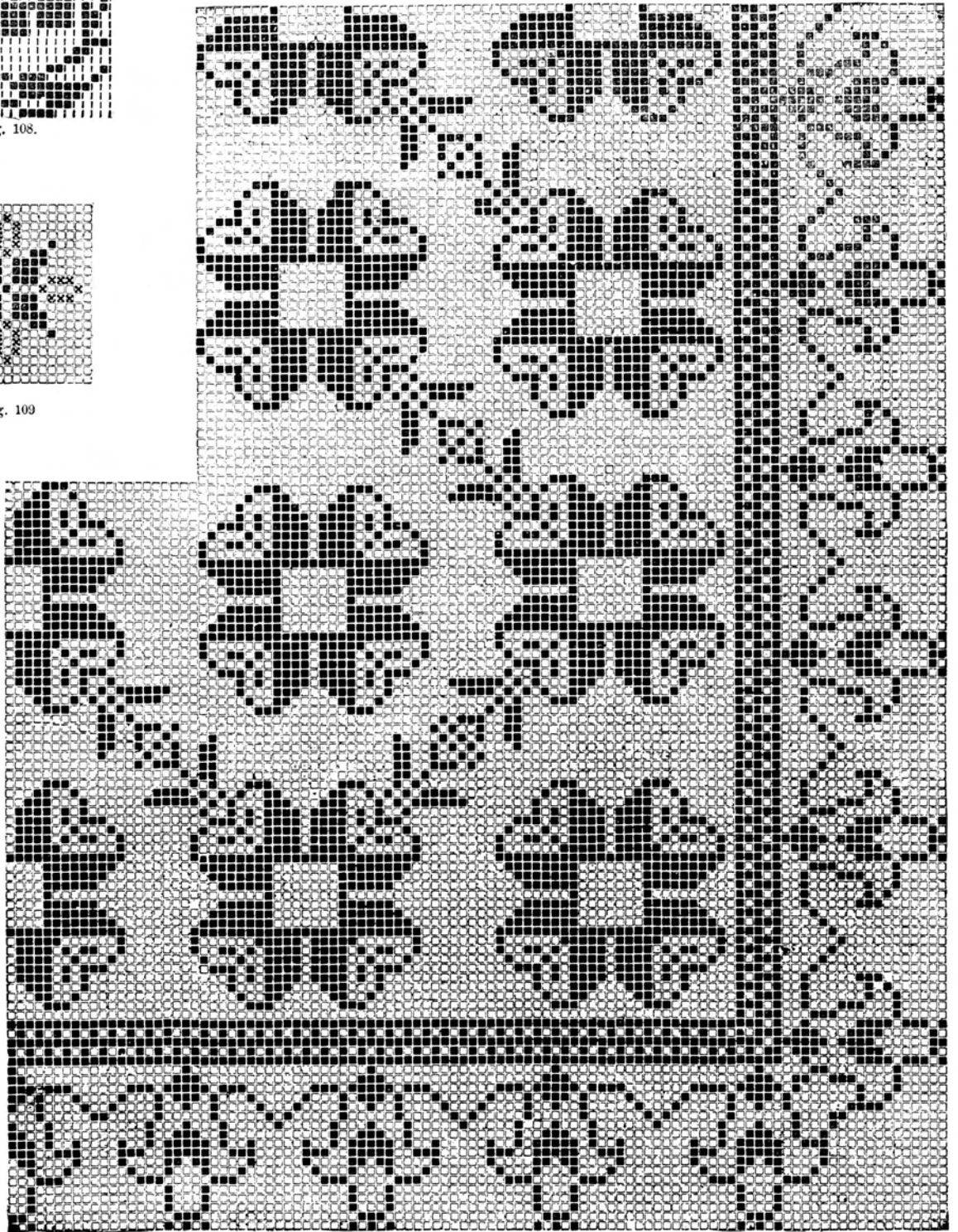


Fig. 110

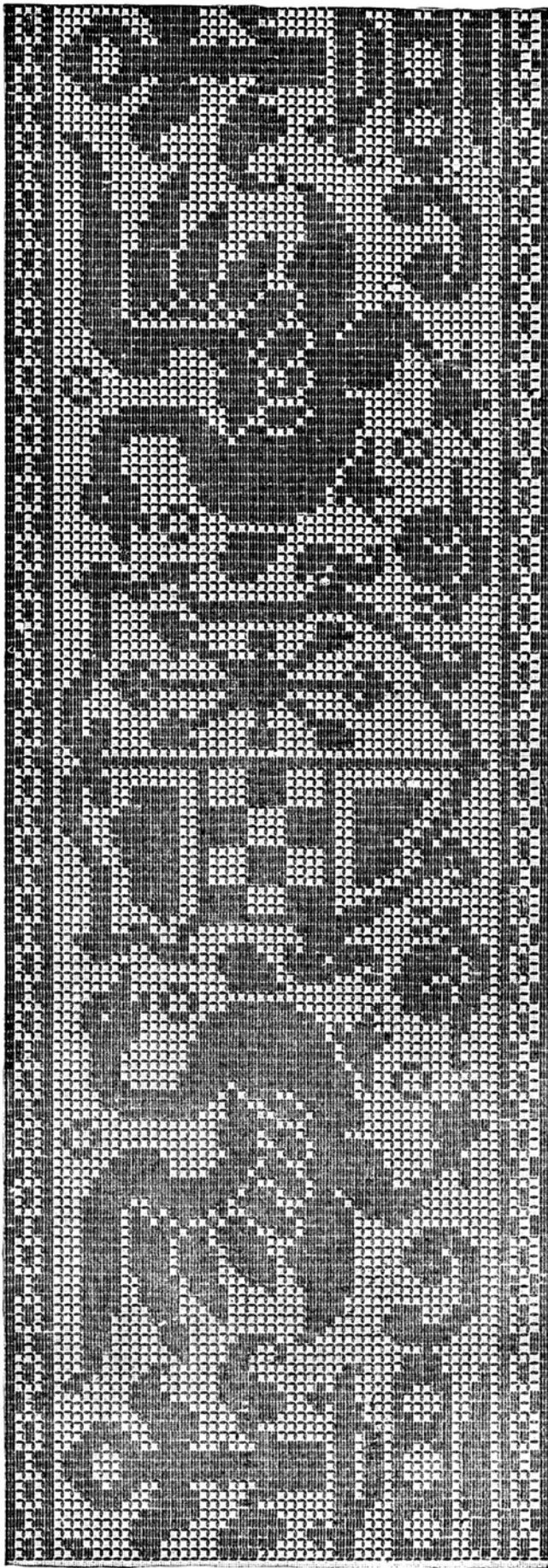


Fig. 111

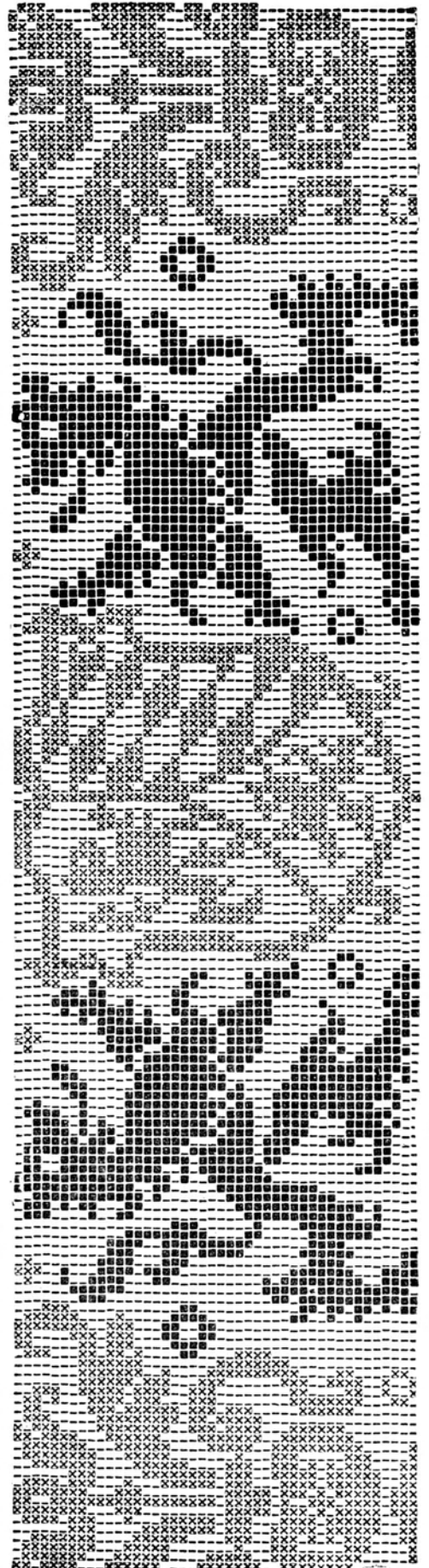


Fig. 112

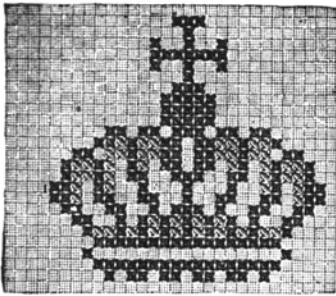
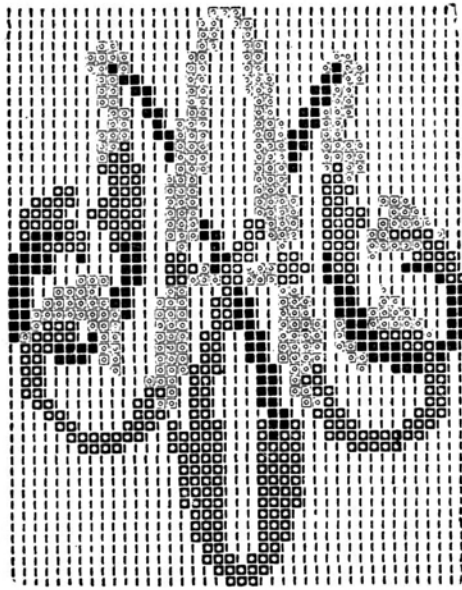


Fig. 113



■ Dark Brown. ■ Bronze Brown. ⊙ Gray. | Ground.
Fig. 117

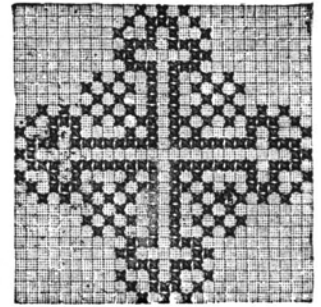


Fig. 120

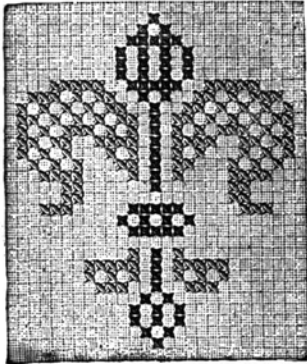


Fig. 114

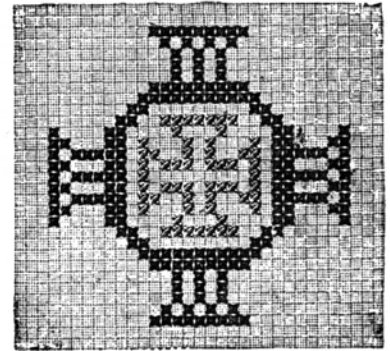


Fig. 121

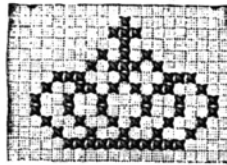


Fig. 118



Fig. 115



Fig. 119



Fig. 122

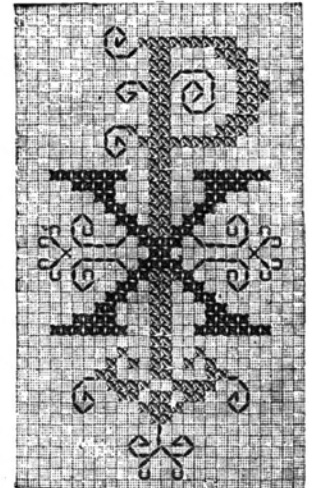


Fig. 123

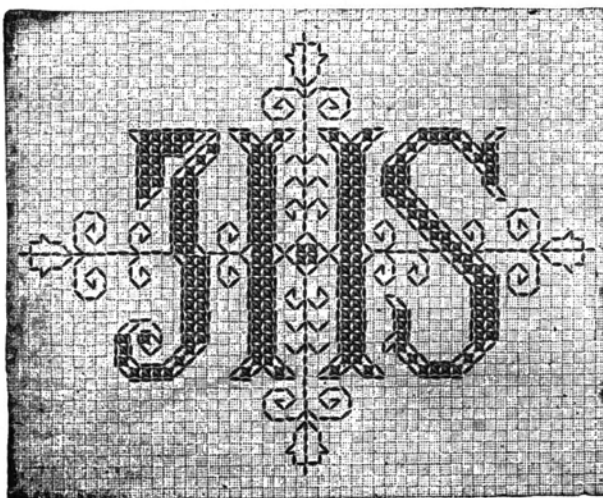


Fig. 116

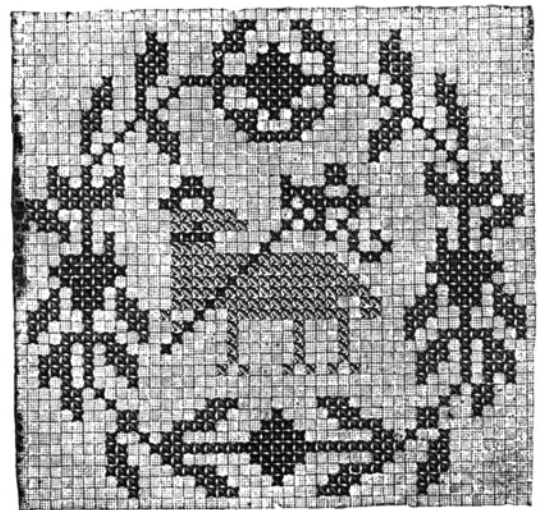


Fig. 124

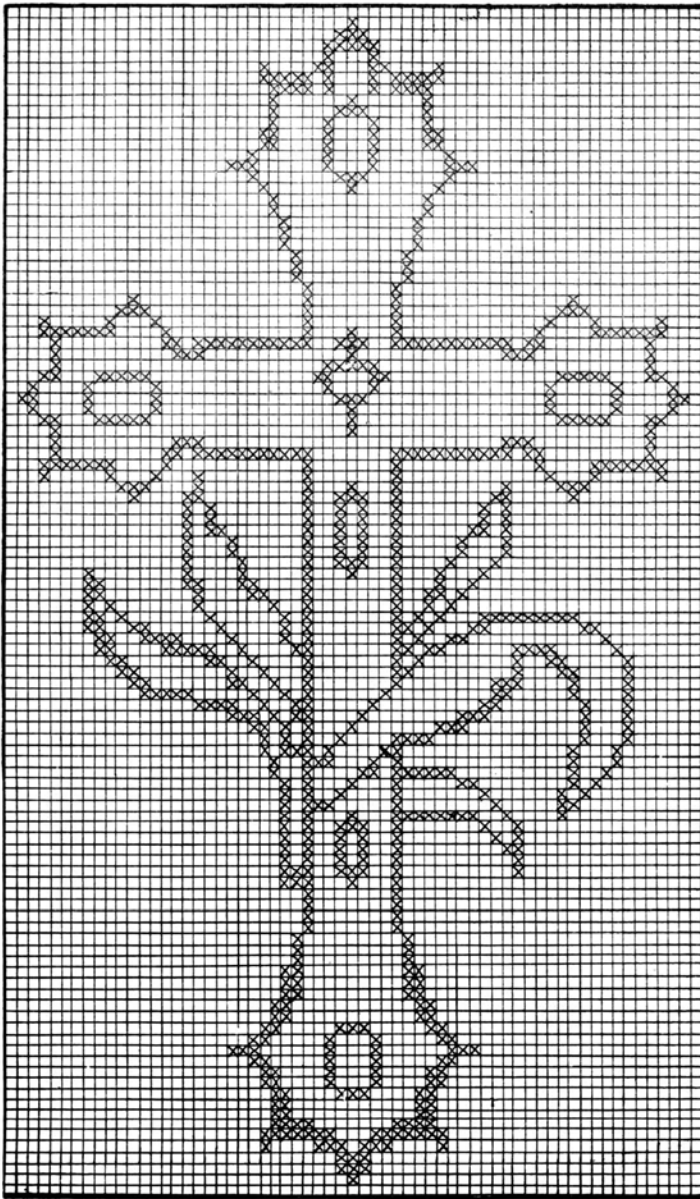
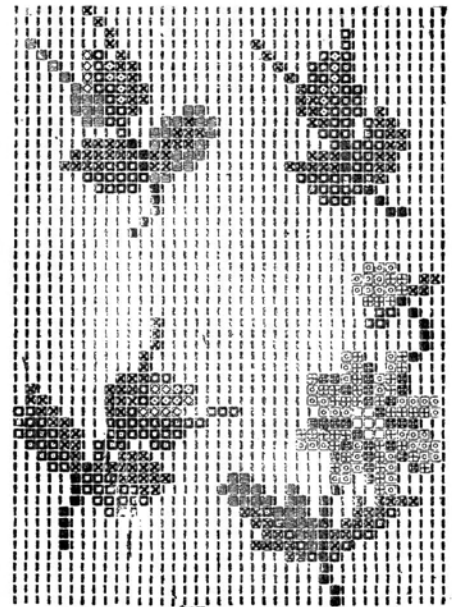


Fig. 125



Brown. ■ 1st, [Darkest]. ⊗ 2d. ▣ 3d, [Lightest] Green. □ 1st, [Darkest]. ⊗ 2d. ⊕ 3d, [Lightest] Red. ▣ 1st, [Darkest]. ⊗ 2d, ⊕ 3d, [Lightest] Gray. □ Yellow. | Ground.

Fig. 126

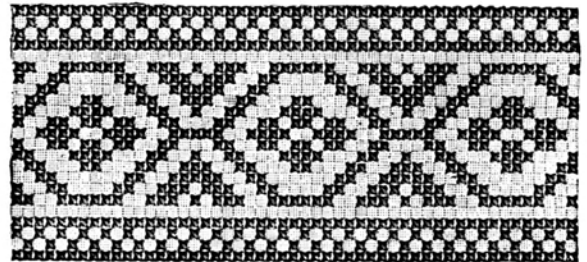
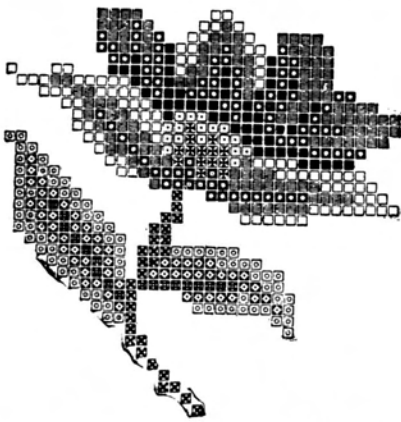
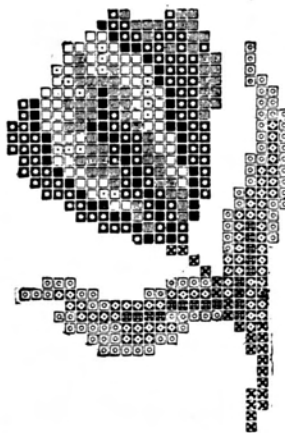


Fig. 127



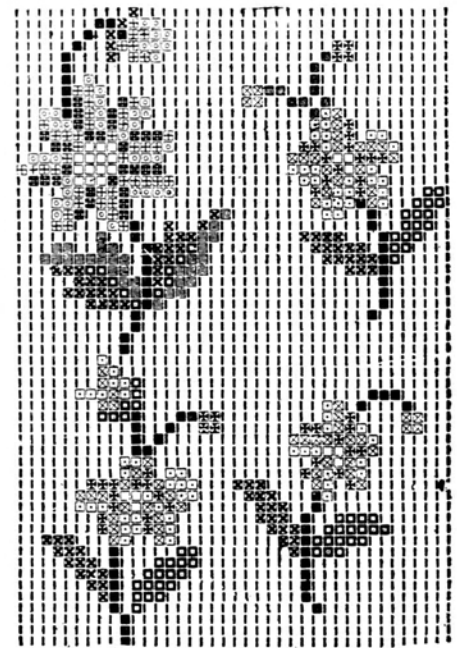
■ 1st, [Darkest]. □ 2d. ▣ 3d. □ 4th. [Lightest] Blue. ▣ 1st, [Darkest]. ⊗ 2d. ⊕ 3d. [Lightest] Brown. ▣ 1st, [Darkest]. ⊗ 2d. ⊕ 3d, [Lightest] Olive Green. ⊗ Bronze Brown.

Fig. 128



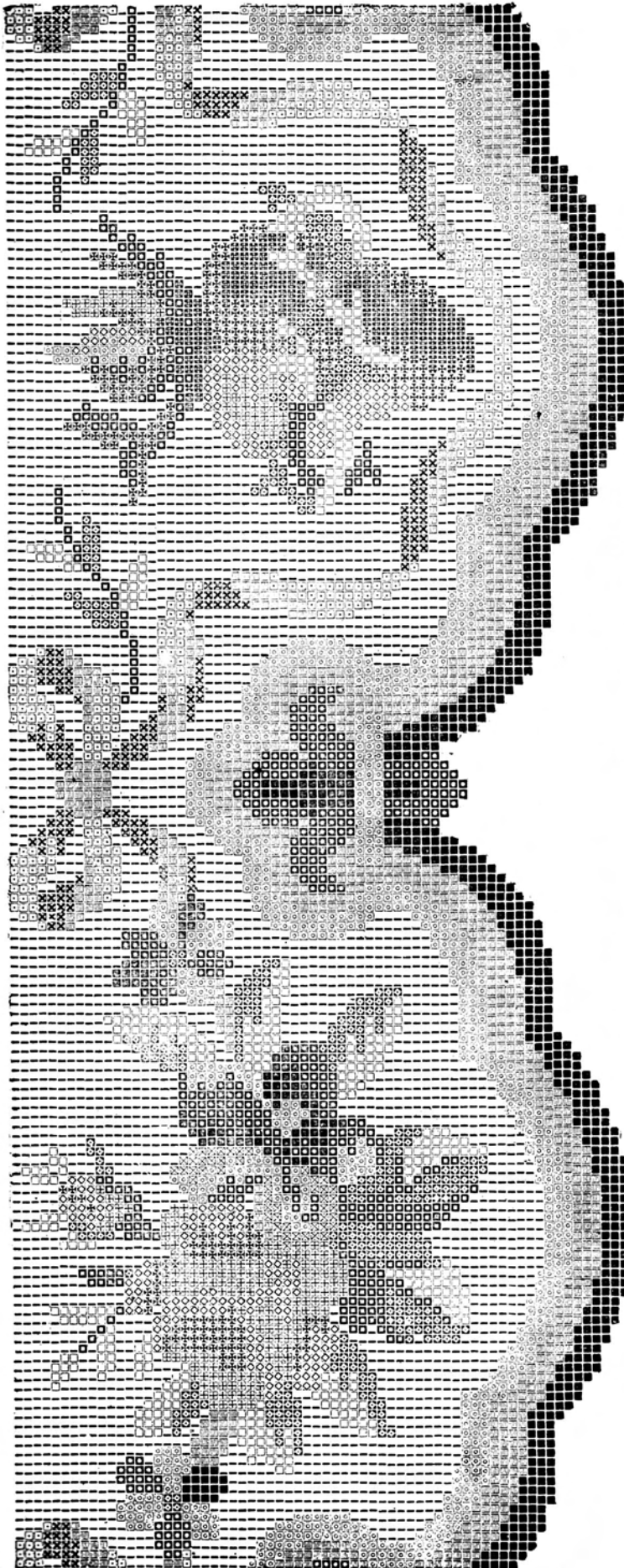
■ 1st, [Darkest]. □ 2d. ▣ 3d. □ 4th. [Lightest] Lilac. □ Dark Yellow. □ Light Yellow. ▣ 1st, [Darkest]. ⊗ 2d. ⊕ 3d, [Lightest] Olive Green. ⊗ Bronze Brown.

Fig. 129



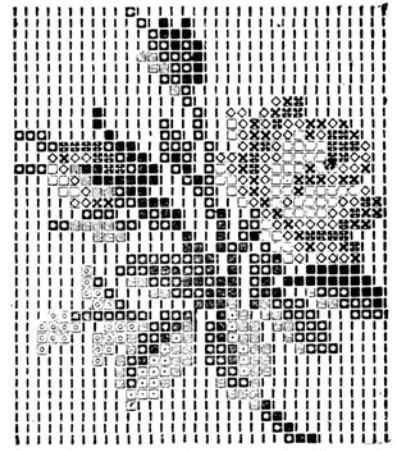
■ Brown. □ 1st, [Darkest]. ⊗ 2d. ▣ 3d, [Lightest] Green. ▣ 1st, [Darkest]. ⊗ 2d. ⊕ 3d, [Lightest] Gray. ▣ 1st, [Darkest]. ⊗ 2d. ⊕ 3d, [Lightest] Blue. □ Yellow. | Ground.

Fig. 130



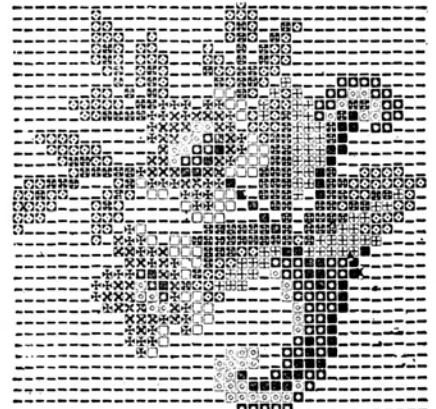
■ Dark Brown, □ Bronze Brown, ⊞ Gray, ⊞ 1st, [Darkest] □ 2d, □ 3d, [Lightest] Blue-Green, ⊞ Dark Red, ⊞ Light Red, ⊞ Pink, ⊞ 1st, [Darkest], ⊞ 2d, □ 3d, [Lightest] Olive-Green, ⊞ Cream Color, | Ground.

Fig. 131



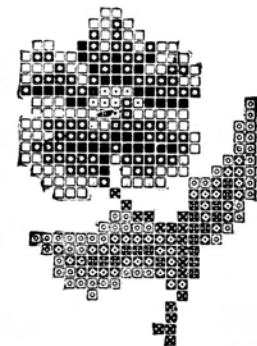
■ 1st, [Darkest], □ 2d, □ 3d, □ 4th, [Lightest] Olive Green, ⊞ 1st, [Darkest], ⊞ 2d, ⊞ 3d, [Lightest] Red, ⊞ Pink, □ Dark Blue-Green, ⊞ Light Blue-Green, | Ground.

Fig. 132



■ Dark Brown, □ Light Brown, ⊞ Gray, ⊞ 1st, [Darkest], □ 2d, ⊞ 3d, [Lightest] Blue-Green, ⊞ 1st, [Darkest] ⊞ 2d, □ 3d, [Lightest] Blue, | Ground.

Fig. 133



■ 1st, [Darkest], □ 2d, □ 3d, [Lightest] Red, □ Dark Yellow, ⊞ Light Yellow, ⊞ 1st, [Darkest], ⊞ 2d, ⊞ 3d, [Lightest] Olive Green, ⊞ Bronze Brown.

Fig. 134

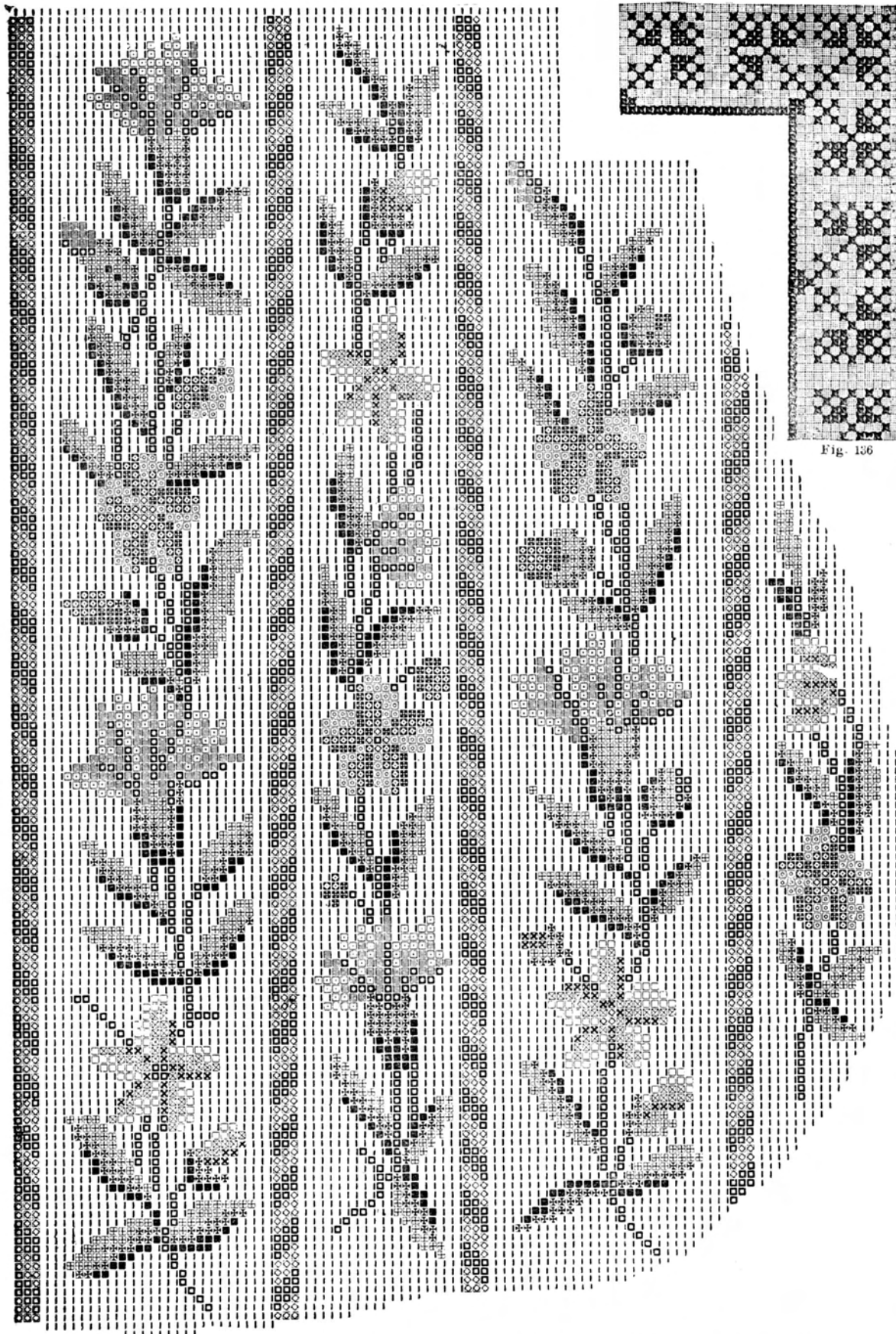
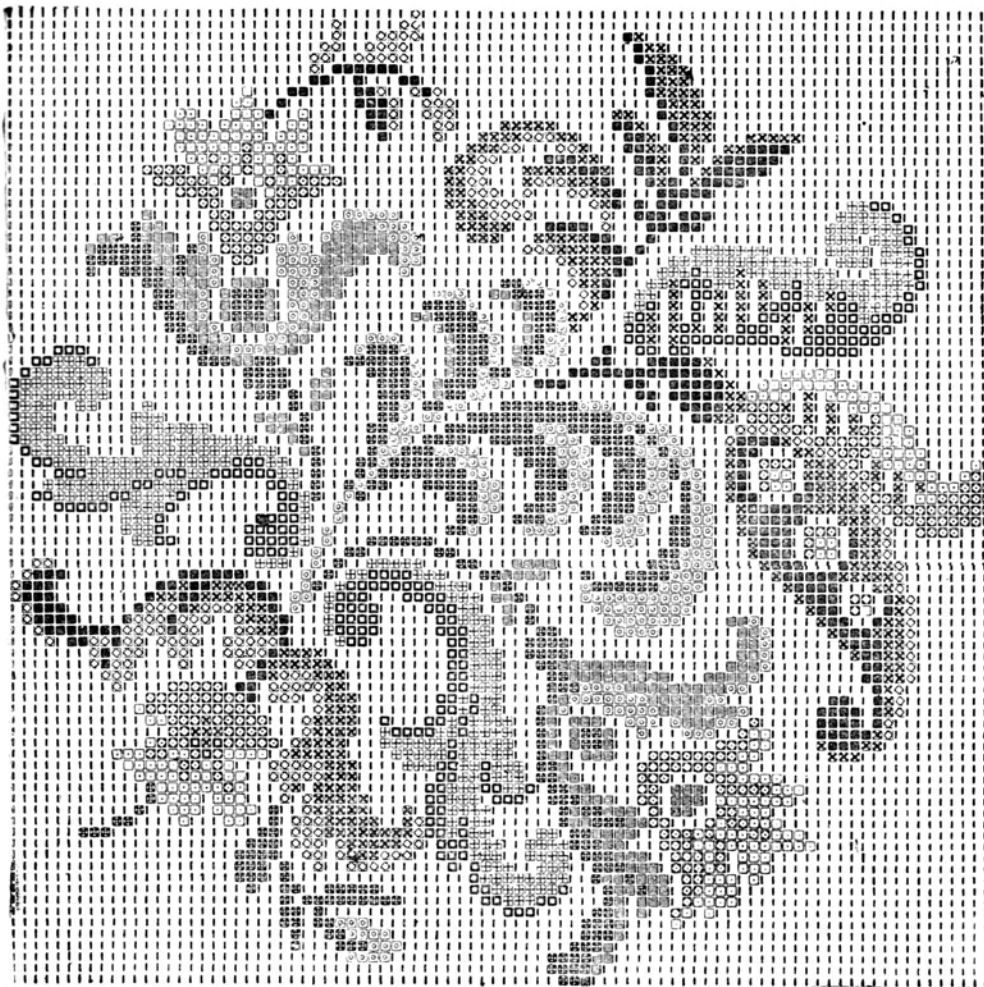


Fig. 136

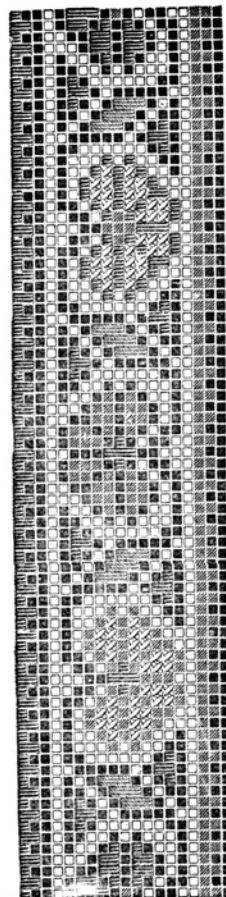
■ 1st (Darkest), □ 2d, □ 3d, (Lightest) Lilac. ■ 1st, (Darkest), ■ 2d, □ 3d, (Lightest) Blue-Green. □ Old Gold. ■ Bronze Brown. □ 1st, (Darkest), ■ 2d, □ 3d, (Lightest) Blue. ■ 1st, (Darkest), □ 2d, □ 3d, (Lightest) Red. | Ground.

Fig. 135



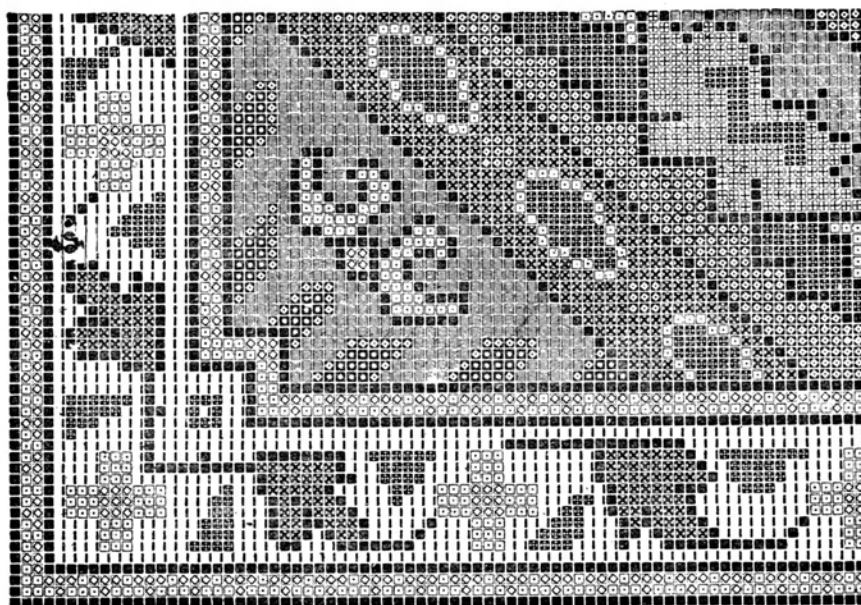
■ 1st, (Darkest), ■ 2d, □ 3d, (Lightest) Olive Green. ■ 1st, (Darkest), □ 2d, □ 3d, (Lightest) Wood Brown. □ Dark Red. □ Light Red. □ Dark Blue. □ Light blue. | Ground.

Fig. 137



■ Black. □ Yellow. ■ Green. ■ Red. □ Blue. ■ White.

Fig. 138



■ Dark Brown. □ Dark Red. □ Light Red. ■ Dark Blue. ■ Light Blue. ■ Dark Olive. □ Light Olive. □ 1st, (Darkest), □ 2d, | 3d, (Lightest) Gray.

Fig. 139

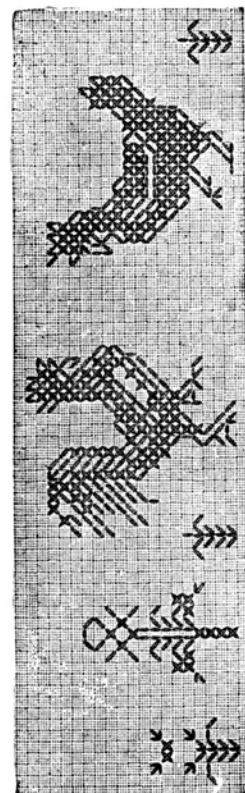
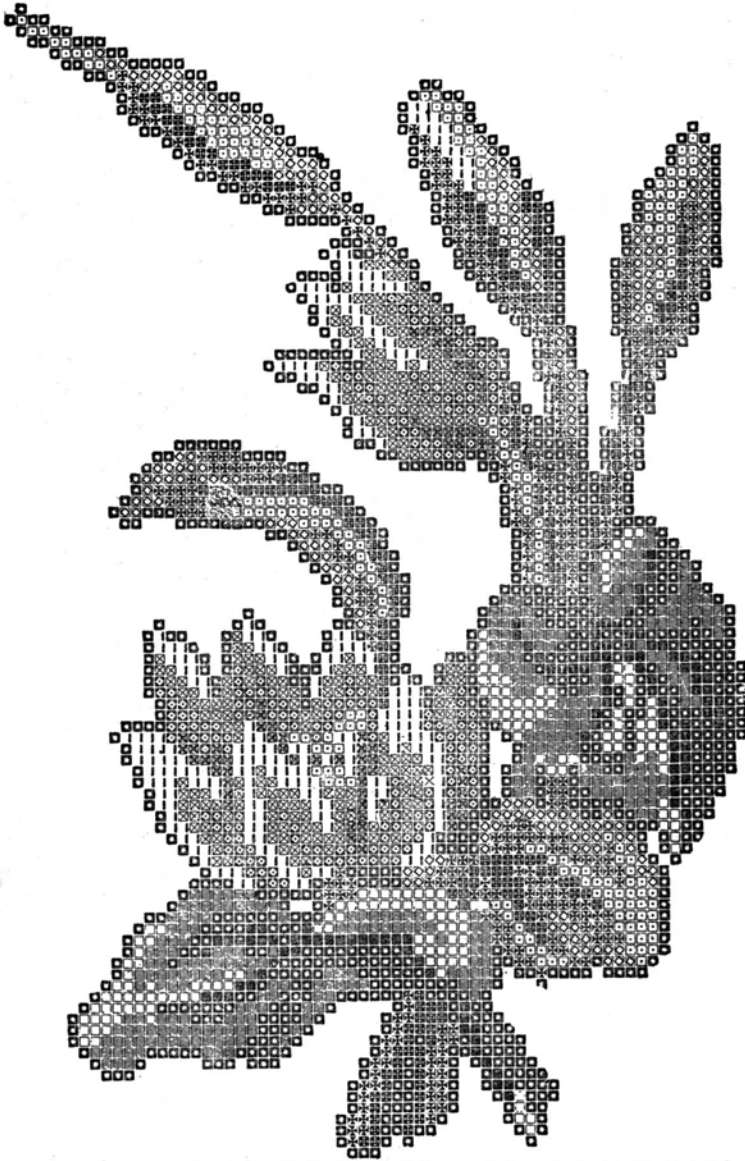


Fig. 140



■ 1st, (Darkest), □ 2d, ▨ 3d, □ 4th, (Lightest) Green. ■ 1st, (Darkest), ▨ 2d, □ 3d, □ 4th, (Lightest) Brown. ▨ 1st, (Darkest), □ 2d, ▨ 3d, □ 4th, (Lightest) Gray.

Fig 141

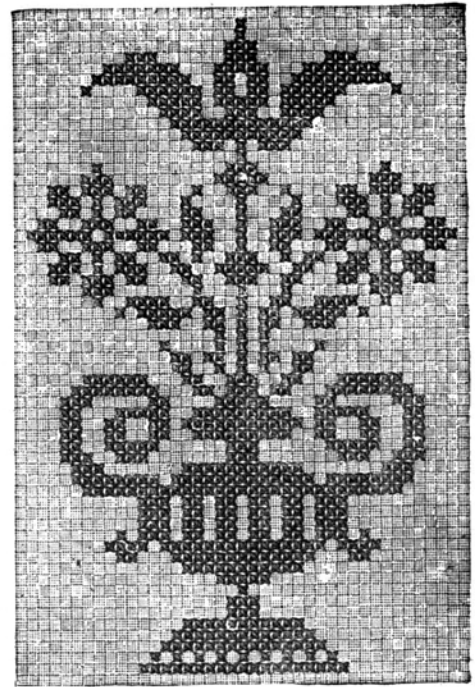


Fig. 142

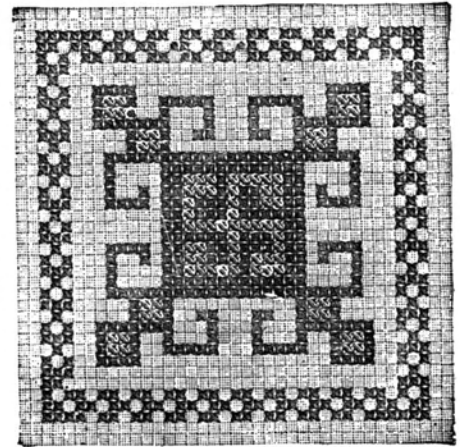
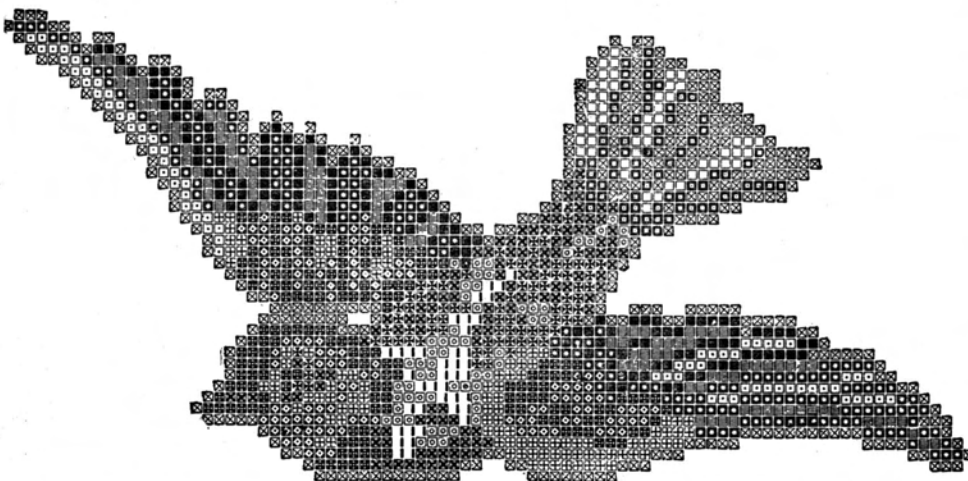


Fig. 143



■ 1st, (Darkest), □ 2d, ▨ 3d, (Lightest) Red. □ Pink. ▨ Dark Brown. ▨ Light Brown. □ Gray. | Yellow.
 ▨ 1st, (Darkest), □ 2d, ▨ 3d, (Lightest) Blue. ▨ Olive Green.

Fig. 144



Fig. 145