

The Antique Pattern Library

For more information, please see our website at: <http://www.antiquepatternlibrary.org>



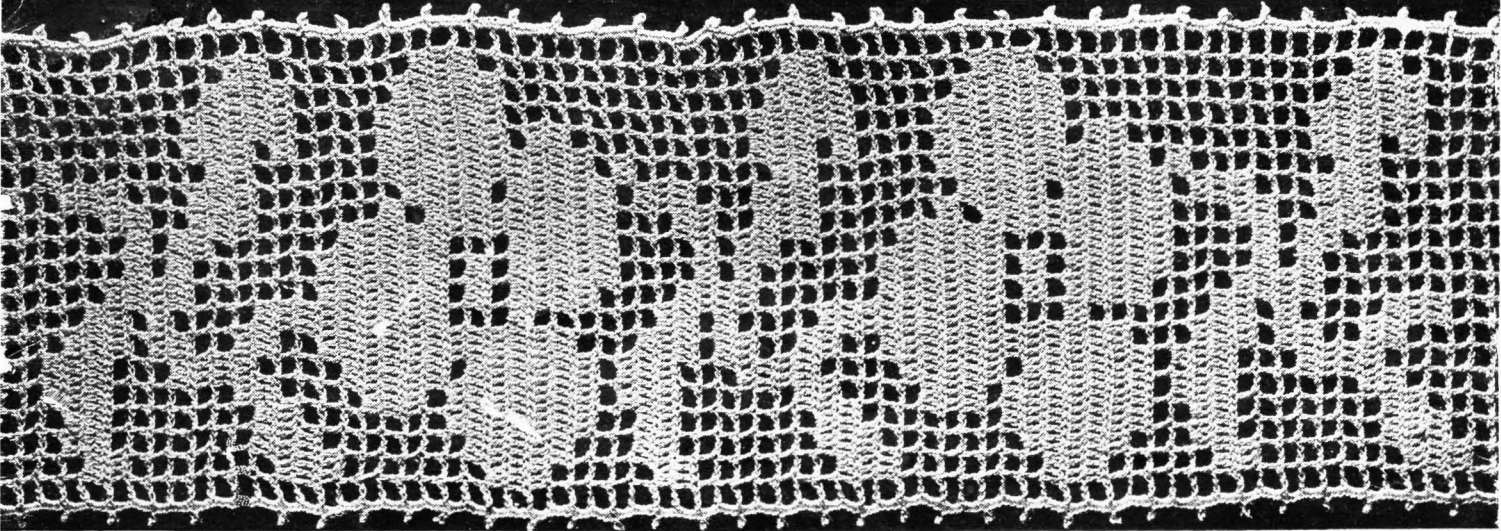
This is a scan of an antique book that is, to the best of our knowledge, in the public domain. The scan itself has been photo-edited for readability, and is licensed under the **Creative Commons** Attribution-NonCommercial-ShareAlike License. To view a copy of this license, visit <http://creativecommons.org/licenses/by-nc-sa/2.5/> or send a letter to Creative Commons, 559 Nathan Abbott Way, Stanford, California 94305, USA.

You may share copies or printouts of this scan freely. You may not sell copies or printouts.

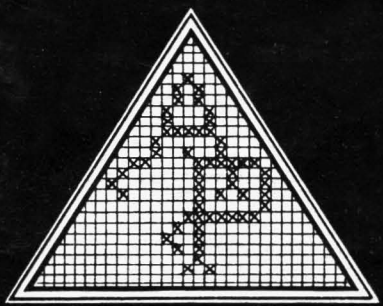
Donated by
Debra Carr

11/2010

BOOK NUMBER THREE



FILET CROCHET AND HOW TO USE IT



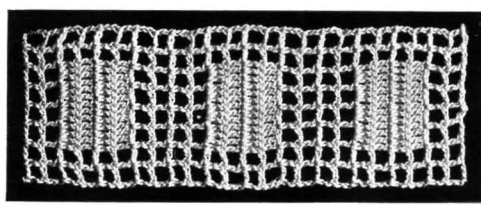
BY
Augusta Pfeuffer

PRICE TEN CENTS

GENERAL DIRECTIONS

FILET CROCHET being the simplest form of crochet, no extra instructions for each piece are given; therefore the publisher has furnished block patterns of each design, thinking it the easiest way from which to copy.

The simple rule to follow is: In starting a piece, get the correct number of chain stitches by counting your meshes, multiply by three, and chain five extra stitches for your turn. Taking the illustration for an example: Chain 24 stitches, make five extra chain up for the open meshes. (This forms the foundation of all filet crochet.) For one closed mesh, work four doubles and add 3 doubles for each additional closed mesh. If lace or piece widens, add necessary chain stitches required, according to rule given.



stitches for your turn and in the 8th chain stitch work one double, chain 2 again, skip 2 chain stitches, work one double in next chain stitch, and so on all the way

Filet crochet is always more attractive when made with a good fine thread. The finished work, also the linen, should be shrunk before putting the crochet in the material.

LATEST AND MOST COMPLETE CROCHET BOOKS

BY AUGUSTA PFEUFFER NEW BRAUNFELS, TEXAS JUST OUT

4 Beautiful Crochet Books, containing hundreds of designs for all purposes, reproduced from photographs.

All illustrations of laces nearly actual size, making them very easy to copy.

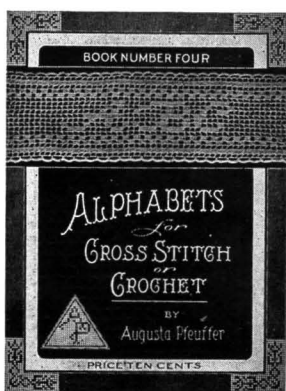
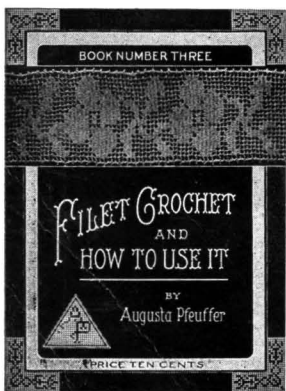
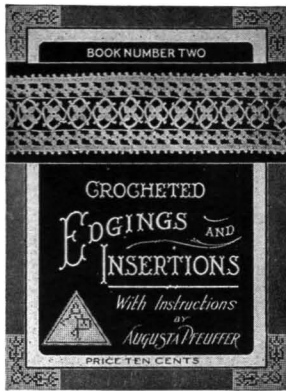
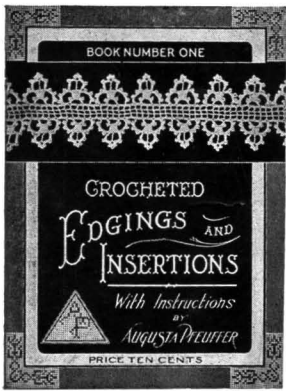
Book No. 1: Contains 64 designs of Crocheted Edgings, Insertions, etc.

Book No. 2: Has a collection of 60 illustrations with full instructions.

Book No. 3: Shows you 78 beautiful patterns, illustrating their various uses.

Book No. 4: Gives you 18 Alphabets, Numerals and many other designs.

GET THEM FROM YOUR DEALER



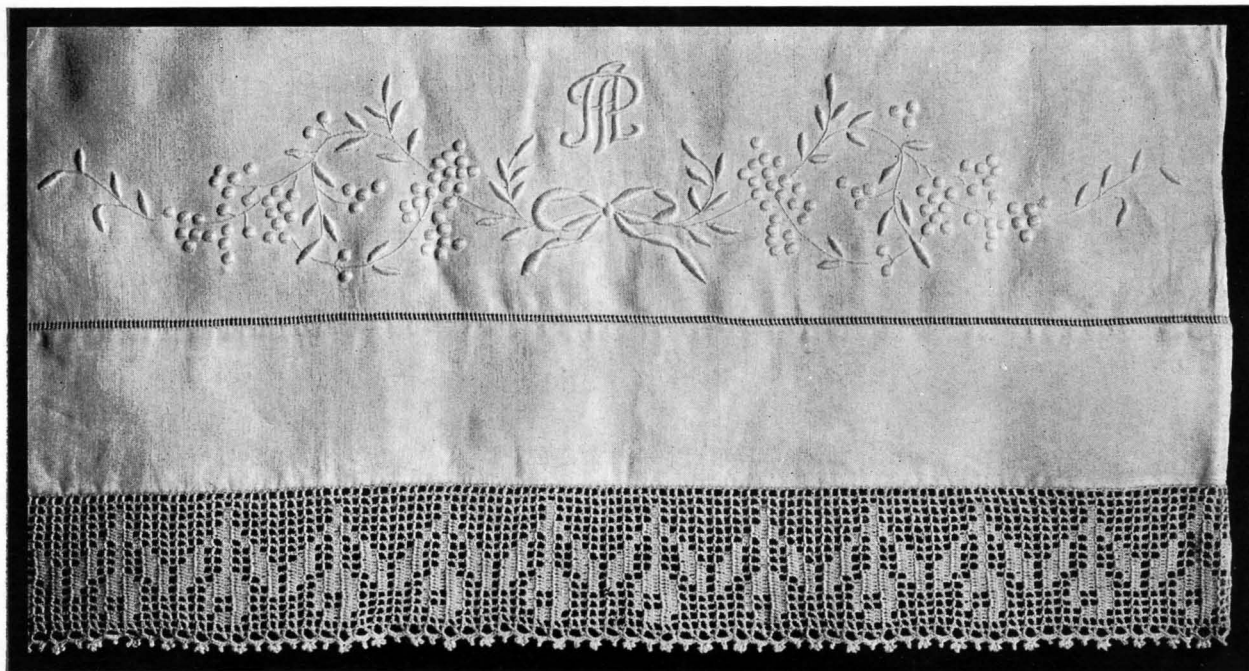


Fig. 1 (See Fig. 61)

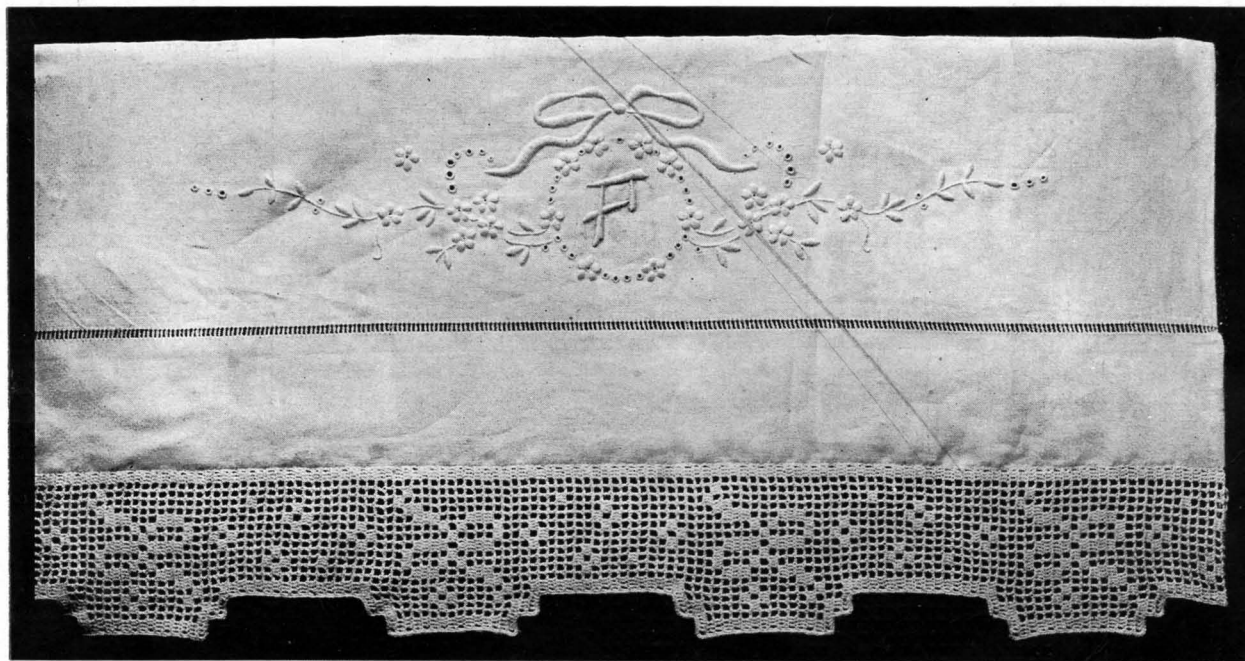


Fig. 2 (See Fig. 62)

For Sheets and Pillow Cases. Made with No. 50 Thread.

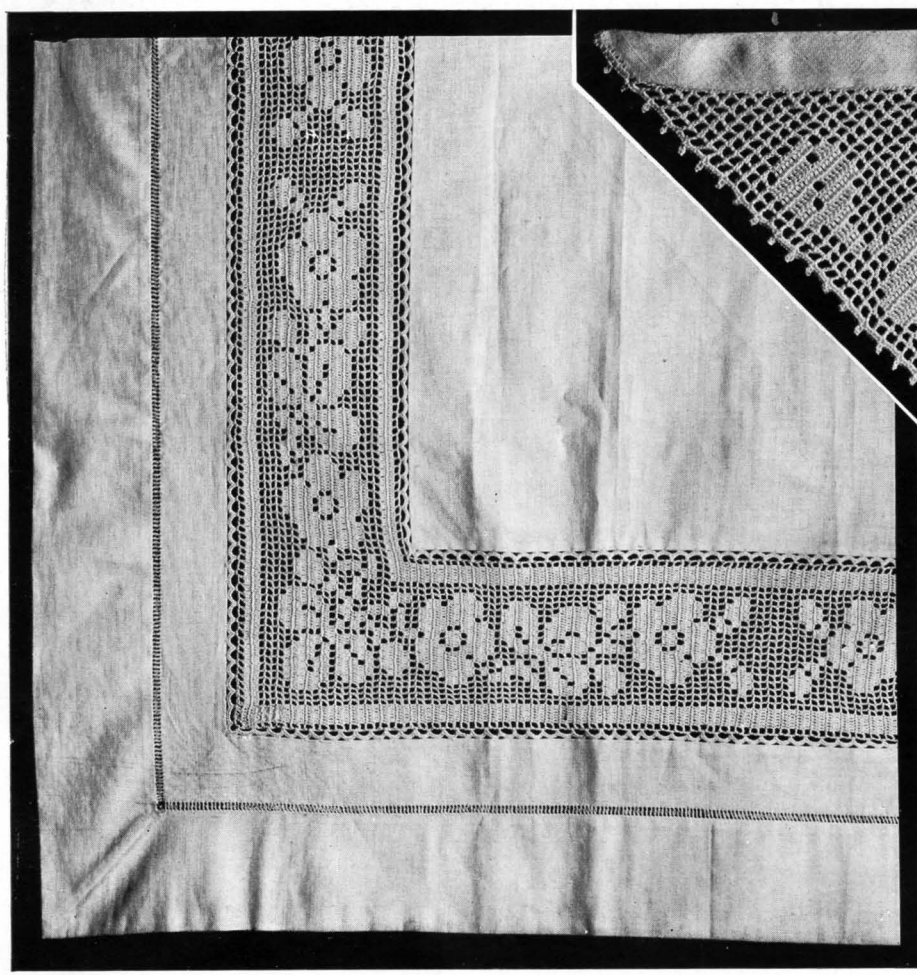


Fig. 4 (See Fig. 5)

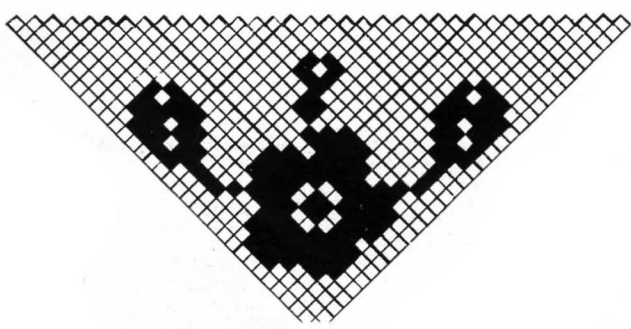


Fig. 5

FIG. 3—LUNCHEON CLOTH WITH NAPKIN TO MATCH (See Fig. 6.)

Use No. 50 thread for this luncheon set. The general size of a luncheon set is from 36 to 38 inches, finished, and the napkins not any larger than 12 or 14 inches.

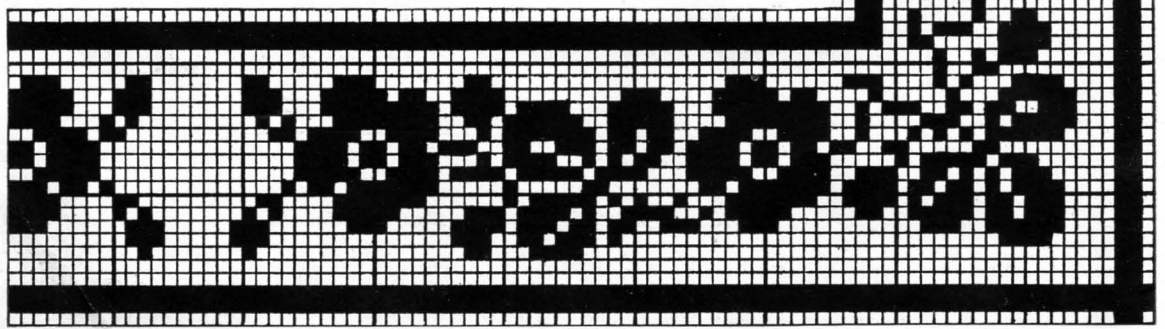
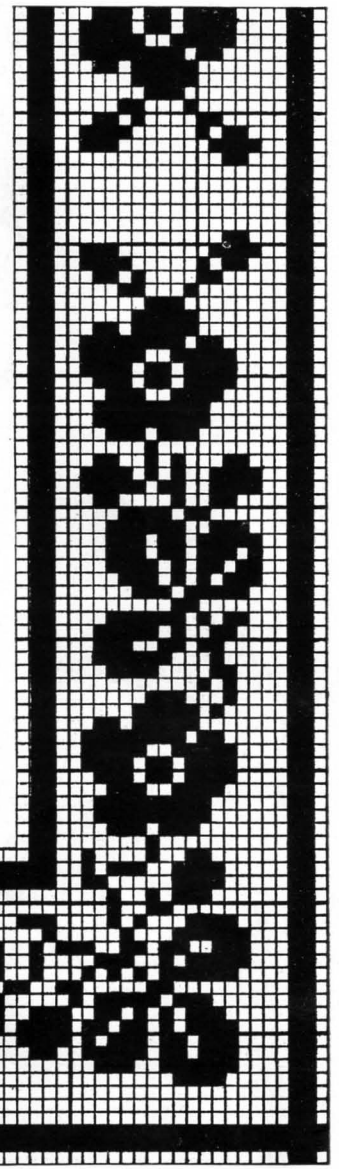


Fig. 6

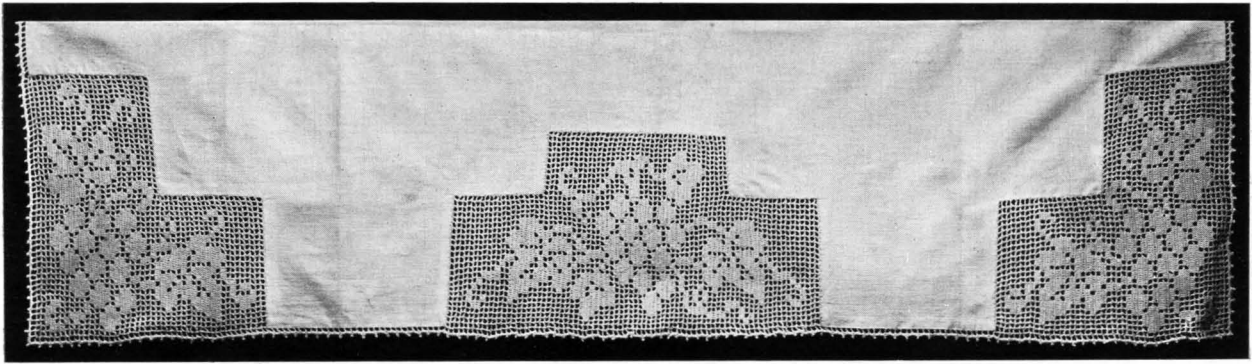


Fig. 7 (See Figs. 33 and 36)

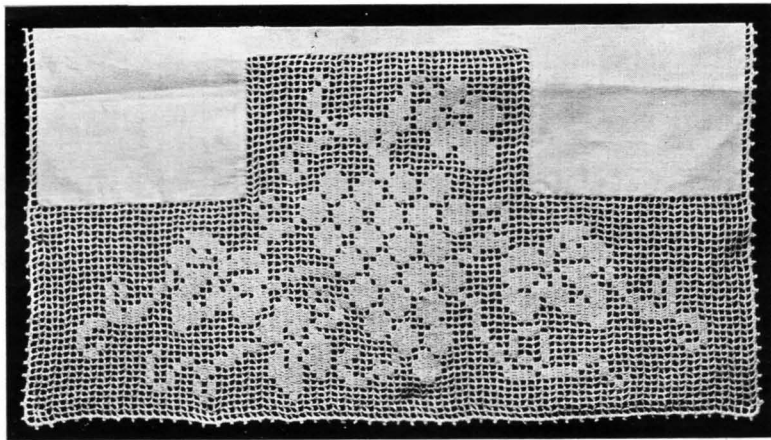


Fig. 8 (See Fig. 37)

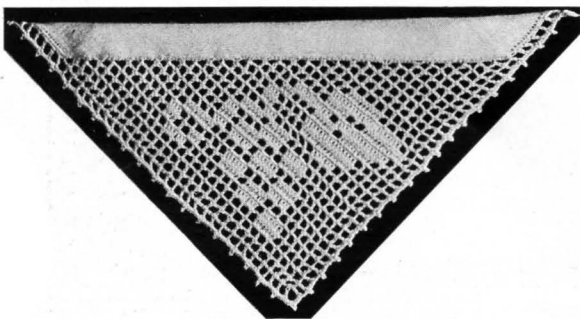


Fig. 9 (See Fig. 34)

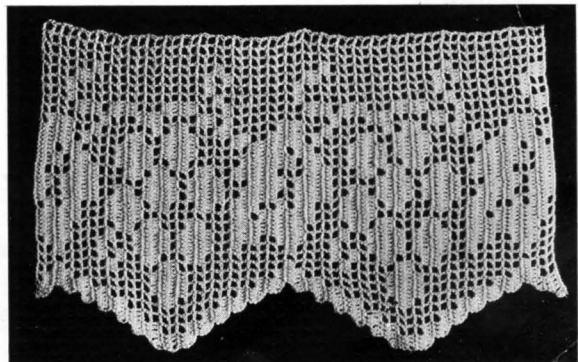


Fig. 10 (See Fig. 35)

DINING ROOM SET

A complete dining-room set of 2 different styles of scarfs, lace for tablecloth and napkin to match. This set was made with No. 40 thread. Fig. 8 measures 19 inches in width. The size of completed figures 7 and 8 is left to the workers. Scarfs and napkin were finished with a row of meshes and a picot edge all around.

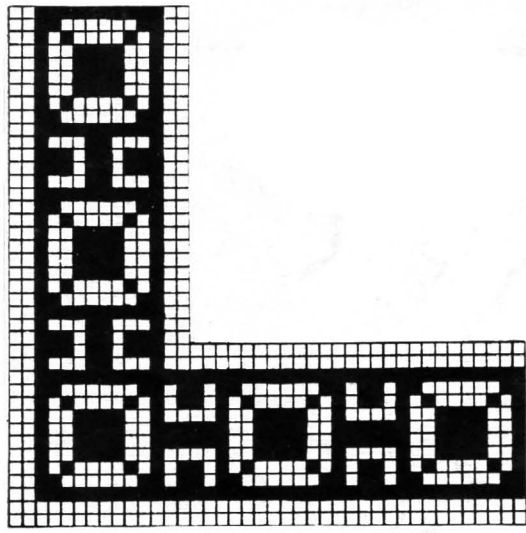


Fig. 12

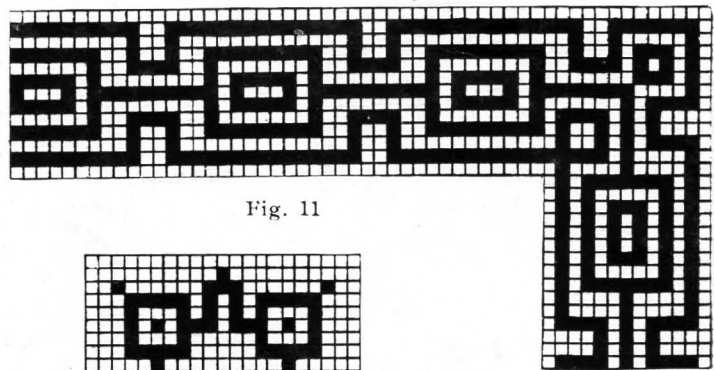


Fig. 11

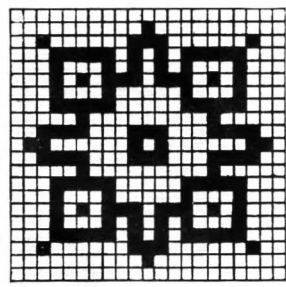


Fig. 13



Fig. 14 (See Fig. 15)



Fig. 15 (See Fig. 14) THE NEW OLD-FASHIONED TIDY

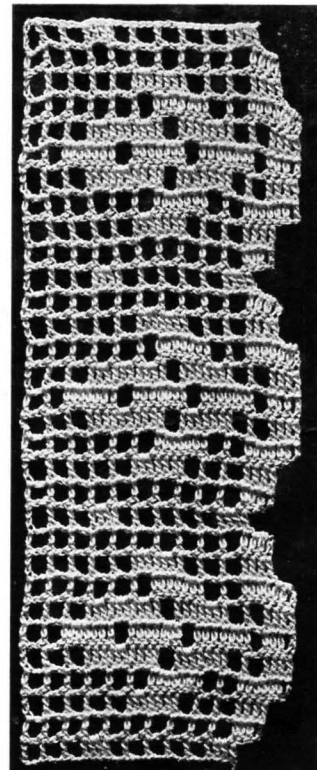


Fig. 16 (See Fig. 19)

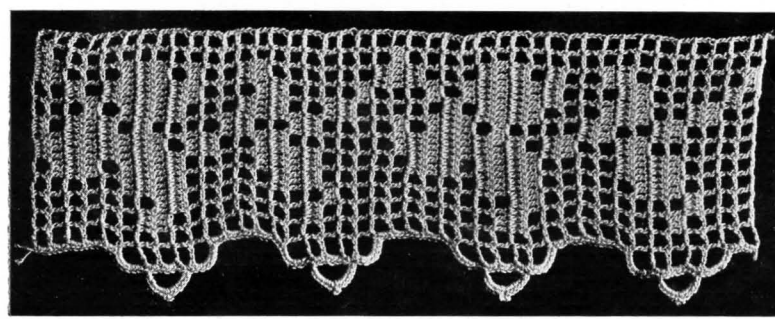


Fig. 17 (See Fig. 21)

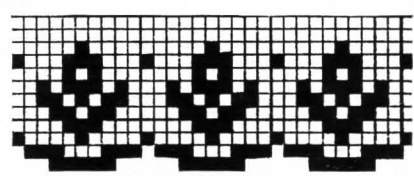


Fig. 18 (See Fig. 19)

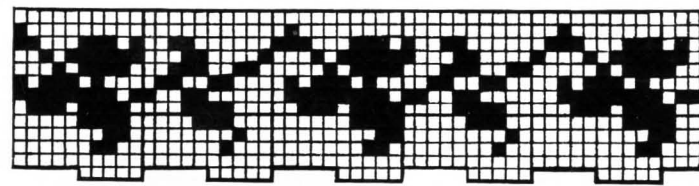


Fig. 19 (See Fig. 16)

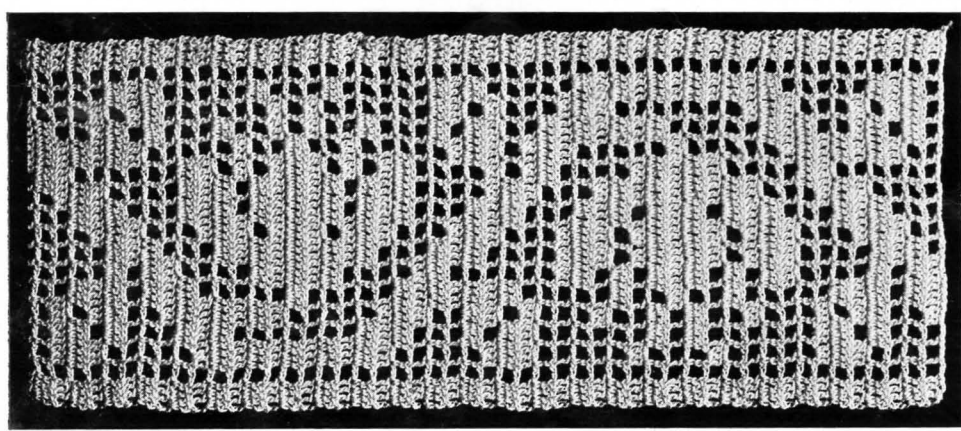


Fig. 20 (See Fig. 21)

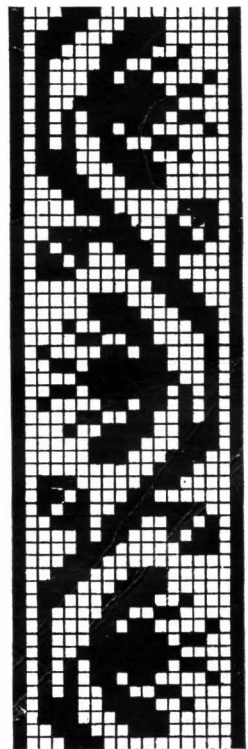


Fig. 21 (See Fig. 20)

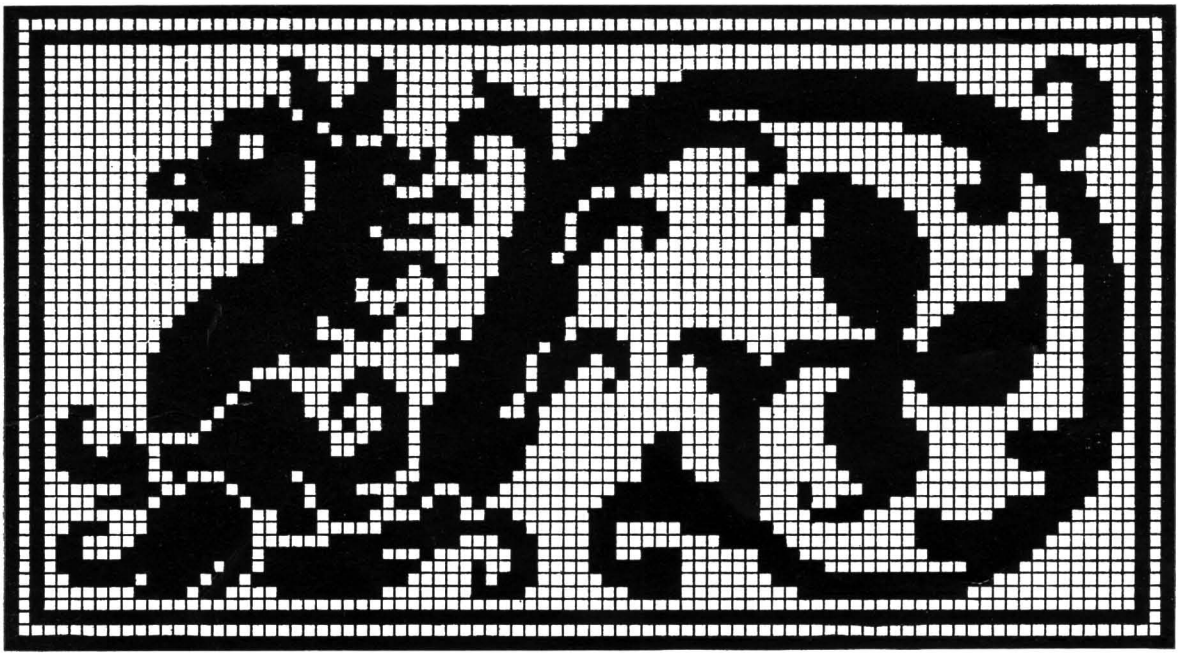


Fig. 22

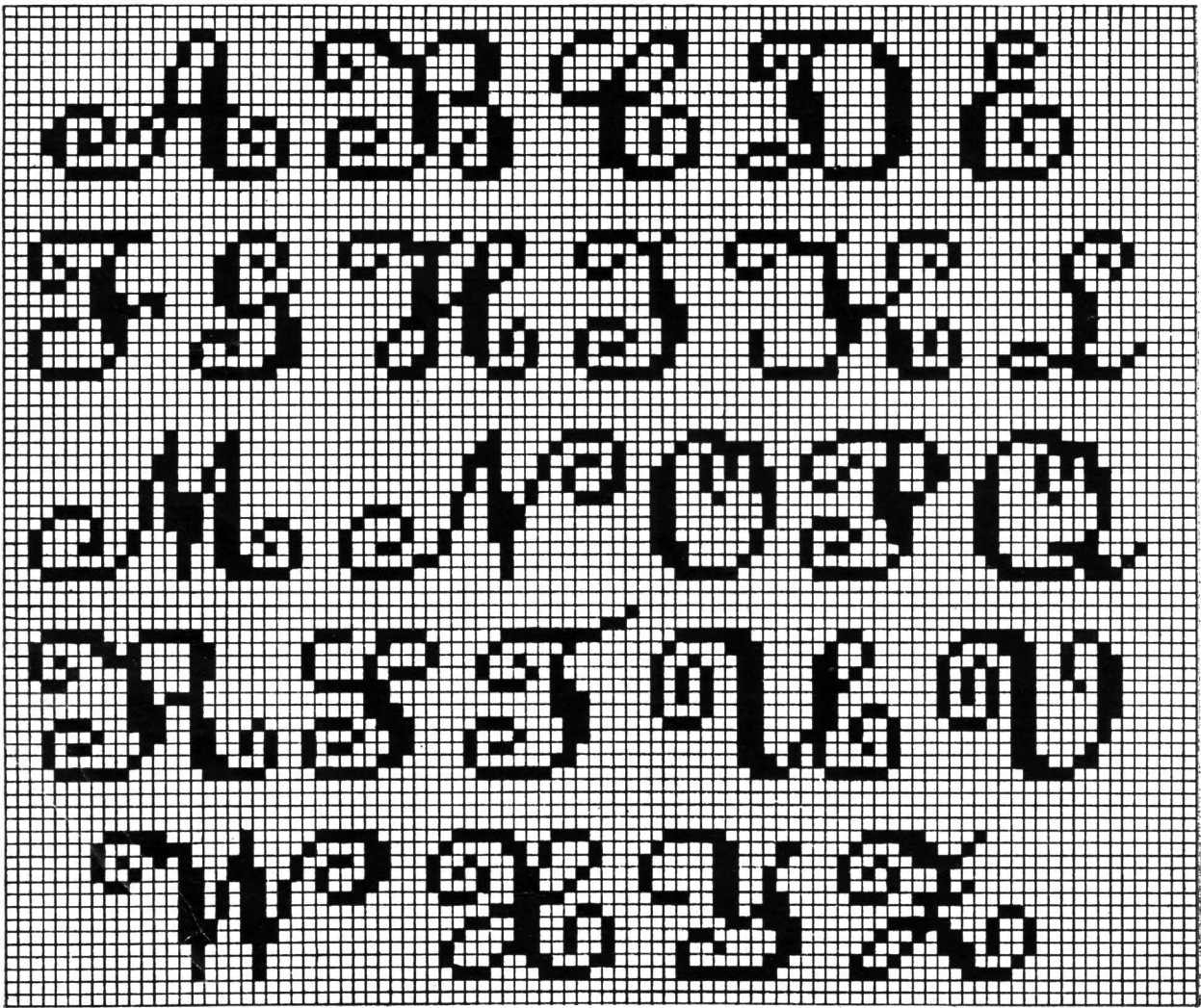


Fig. 23

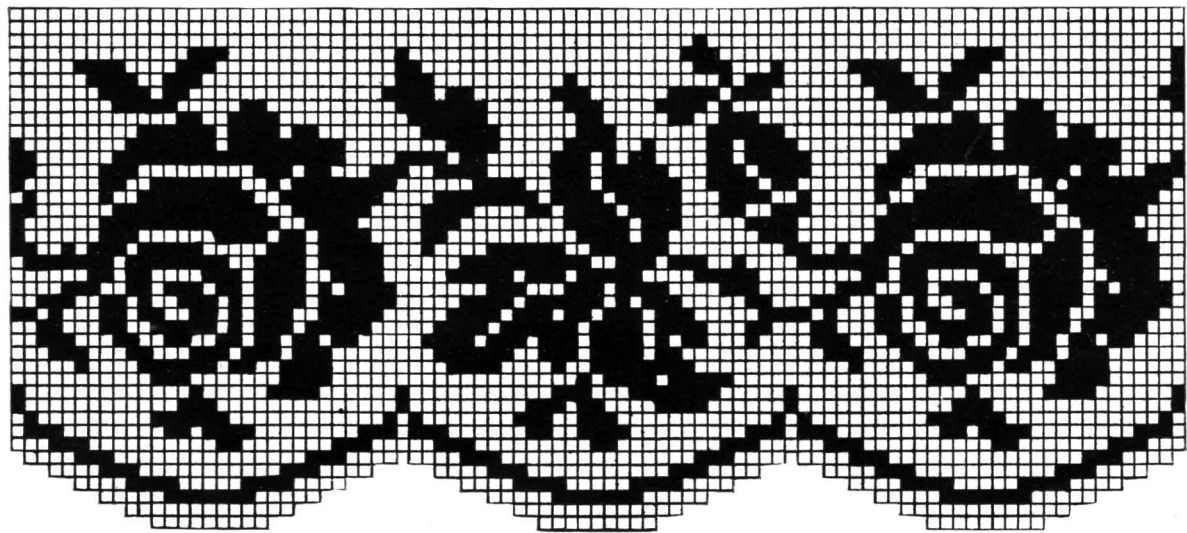


Fig. 24

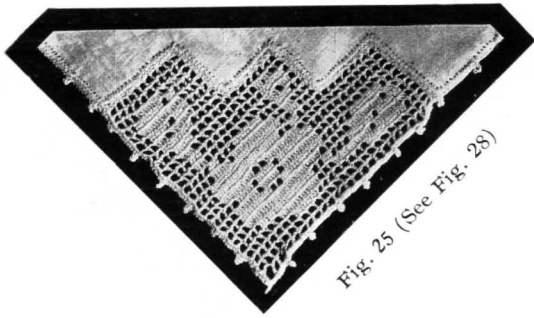


Fig. 25 (See Fig. 28)

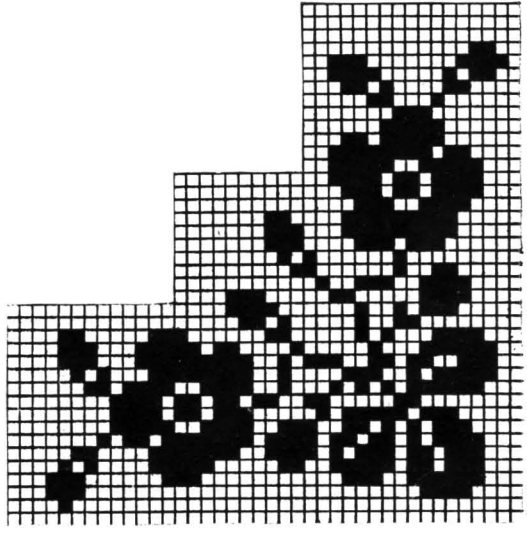


Fig. 26 (See Fig. 27)

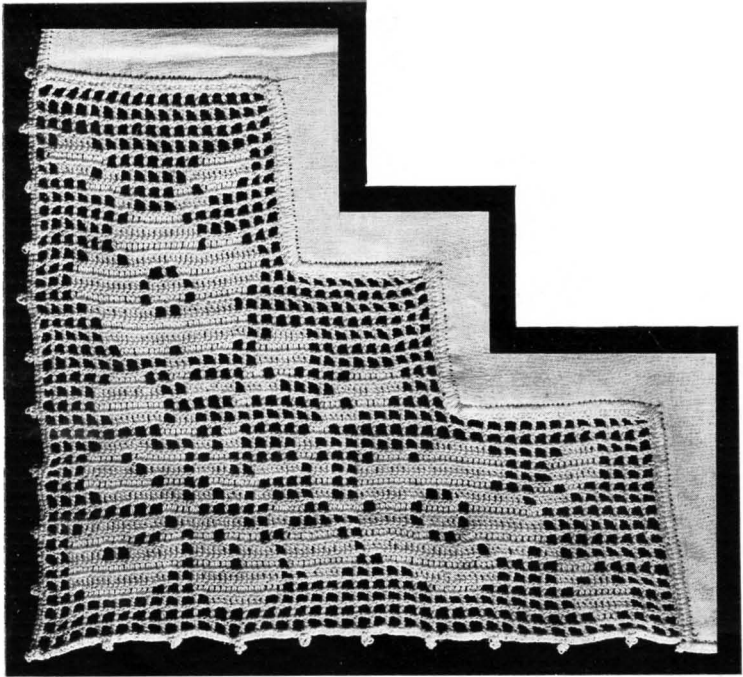


Fig. 27 (See Fig. 26)

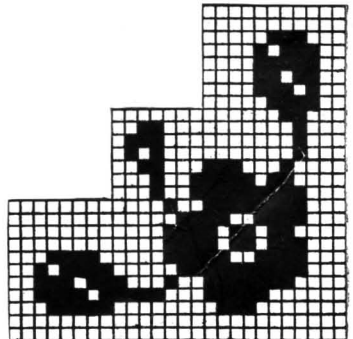


Fig. 28 (See Fig. 25)

A beautiful luncheon cloth with napkin to match and an attractive rose border. Luncheon set was made with No. 50 thread and finished with a picot edge.

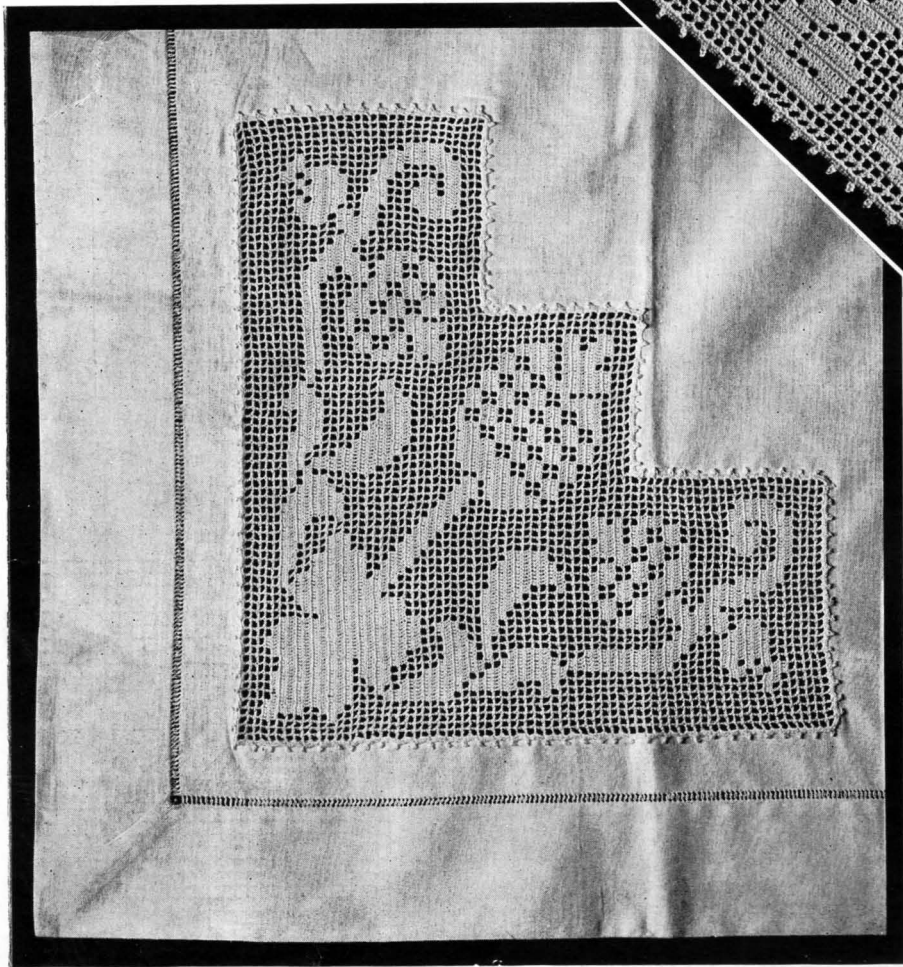


Fig. 30 (See Fig. 32)
Luncheon Cloth with Napkin to Match

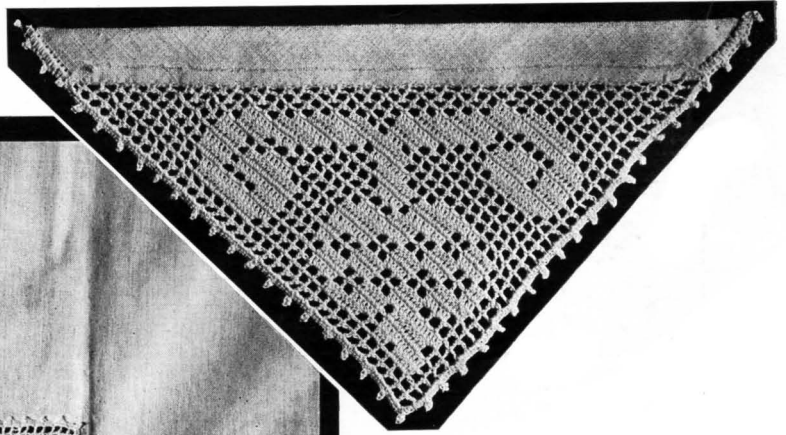


Fig. 29 (See Fig. 31)

FIG. 30, LUNCHEON CLOTH

Another luncheon set, made also in No. 50 thread. The corners are finished with a picot edge all around before being set in the material, and the finish around the napkin is the same.

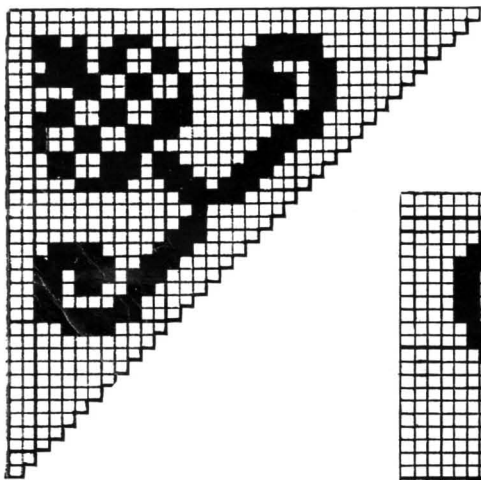


Fig. 31 (See Fig. 29)

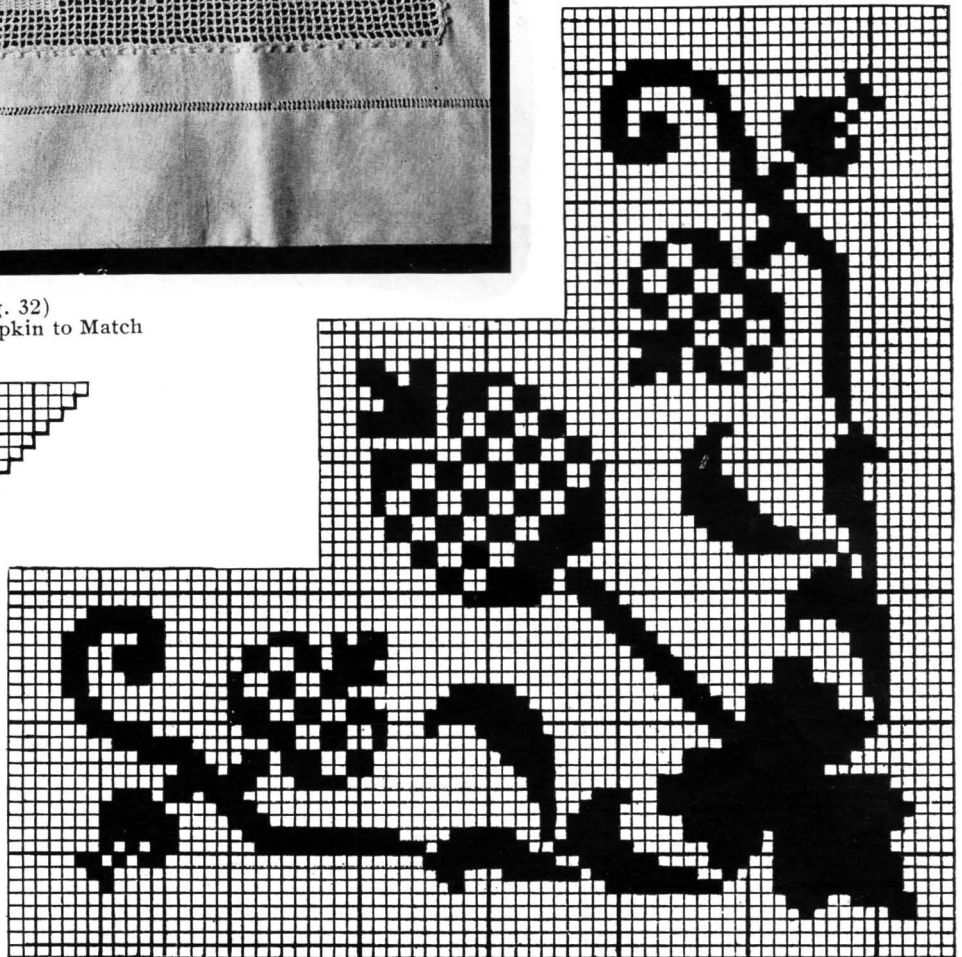


Fig. 32 (See Fig. 30)

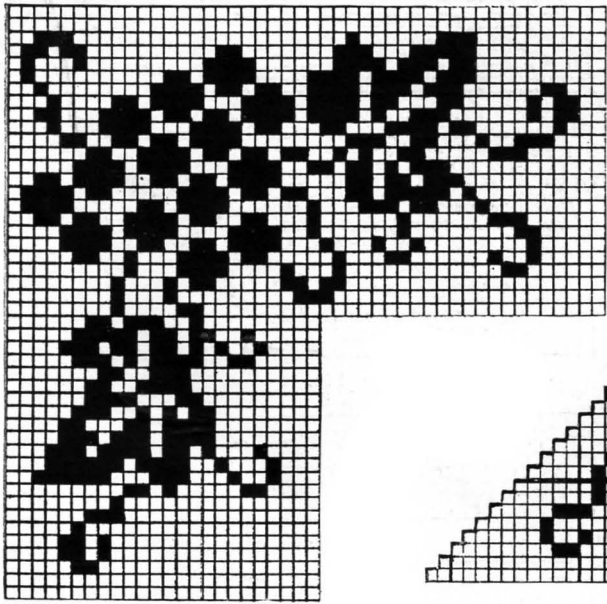


Fig. 33 (See Fig. 7)

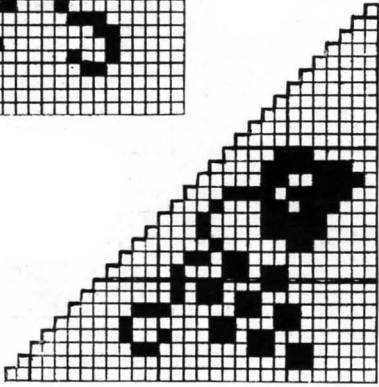


Fig. 34 (See Fig. 9)

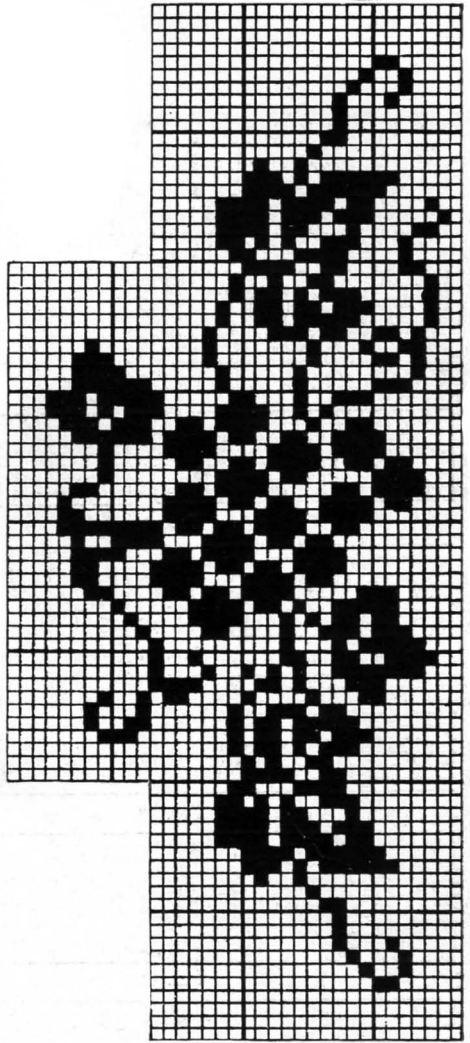


Fig. 36 (See Fig. 7)

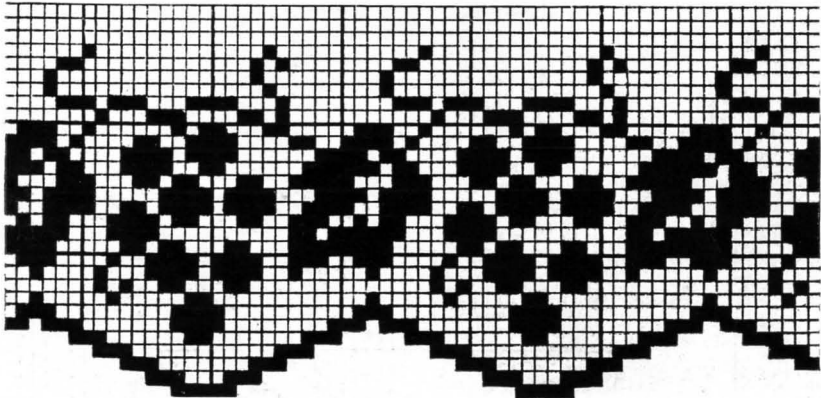


Fig. 35 (See Fig. 10)

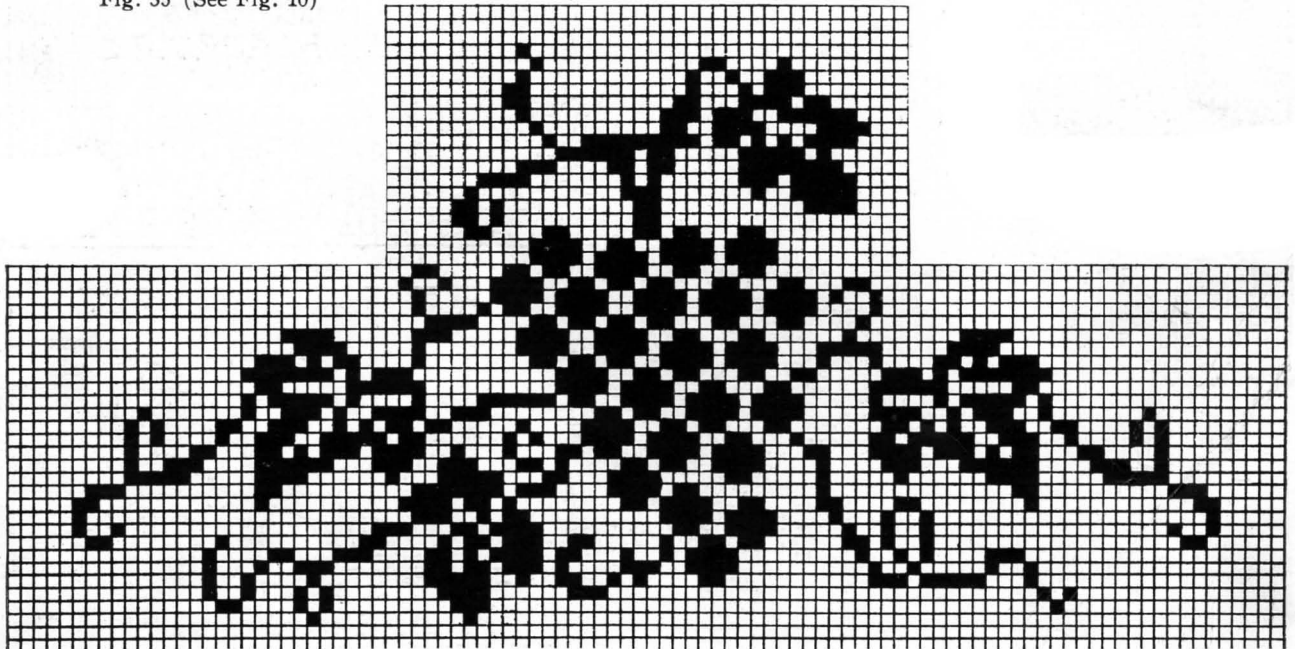


Fig. 37 (See Fig. 8)

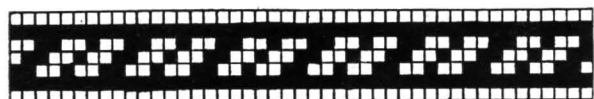


FIG. 38

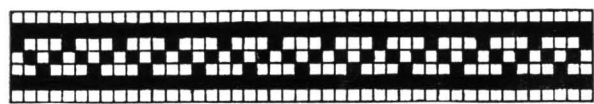


FIG. 39

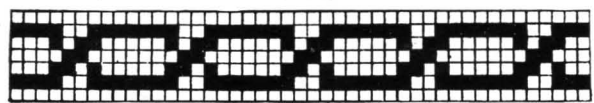


FIG. 40

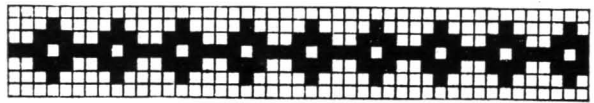


FIG. 41

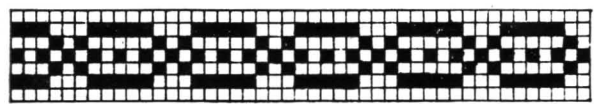


FIG. 42

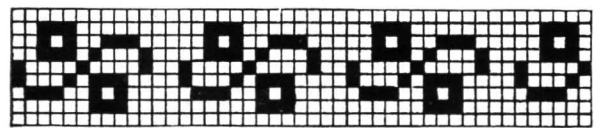


FIG. 43

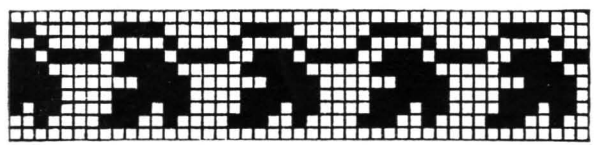


FIG. 44

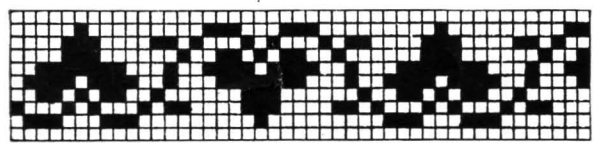


FIG. 45

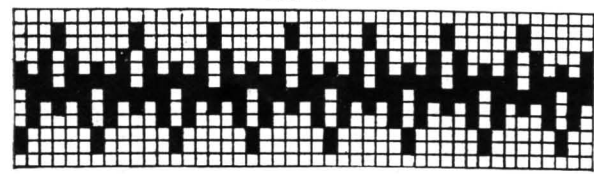


FIG. 46

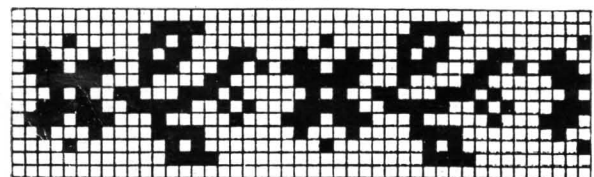


FIG. 47

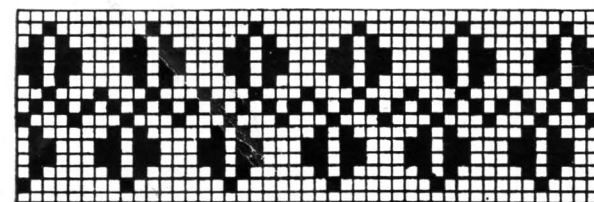


FIG. 48

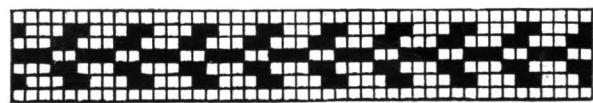


FIG. 49



FIG. 50



FIG. 51

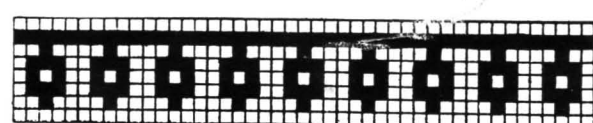


FIG. 52



FIG. 53

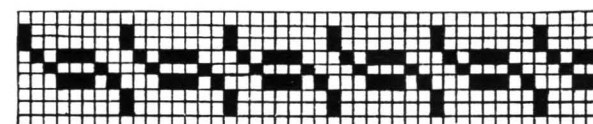


FIG. 54

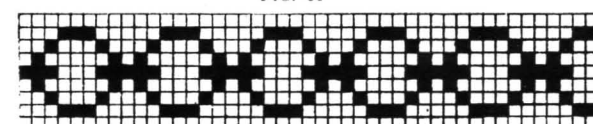


FIG. 55

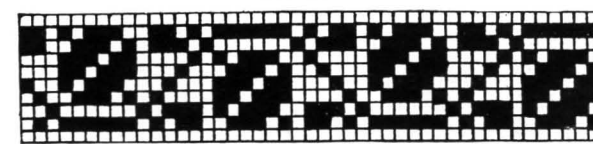


FIG. 56

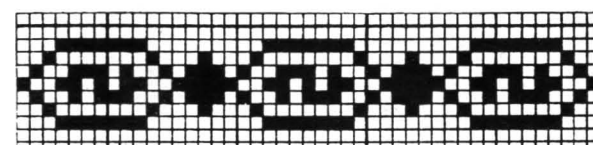


FIG. 57

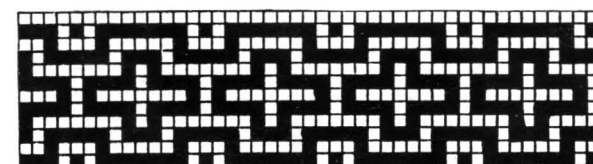


FIG. 58

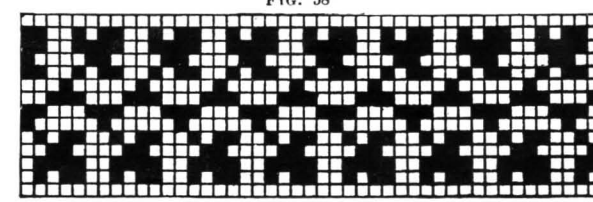


FIG. 59

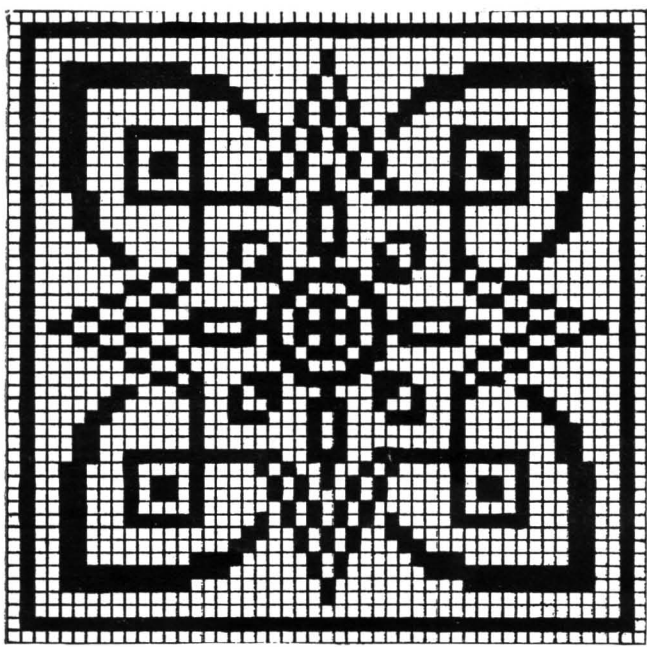


Fig. 60

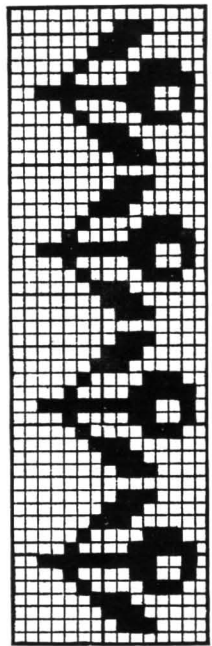


Fig. 61
(See Fig. 1)

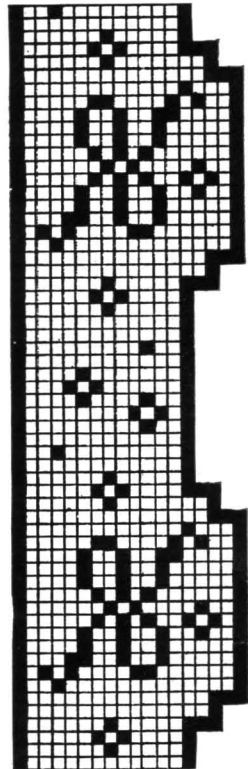


Fig. 62
(See Fig. 2)

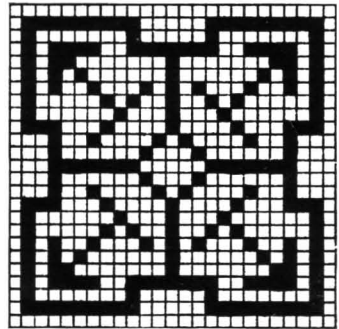


Fig. 63

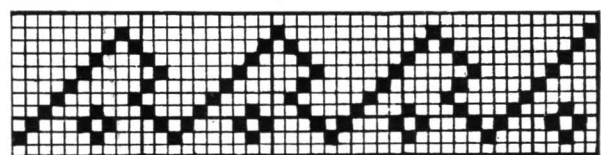


Fig. 64 (See Fig. 68)

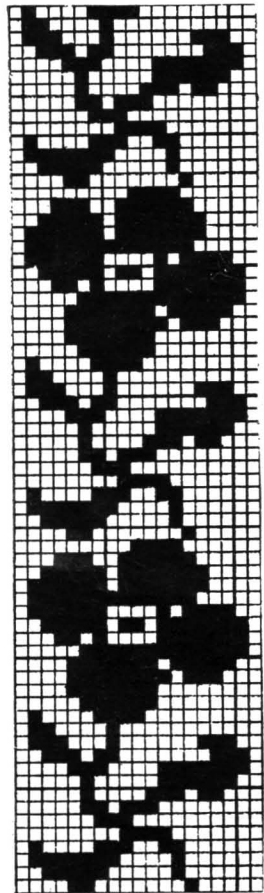


Fig. 65
(See Front Cover)

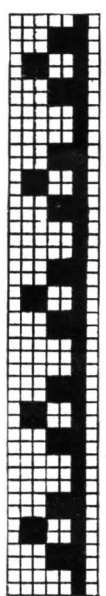


Fig. 66

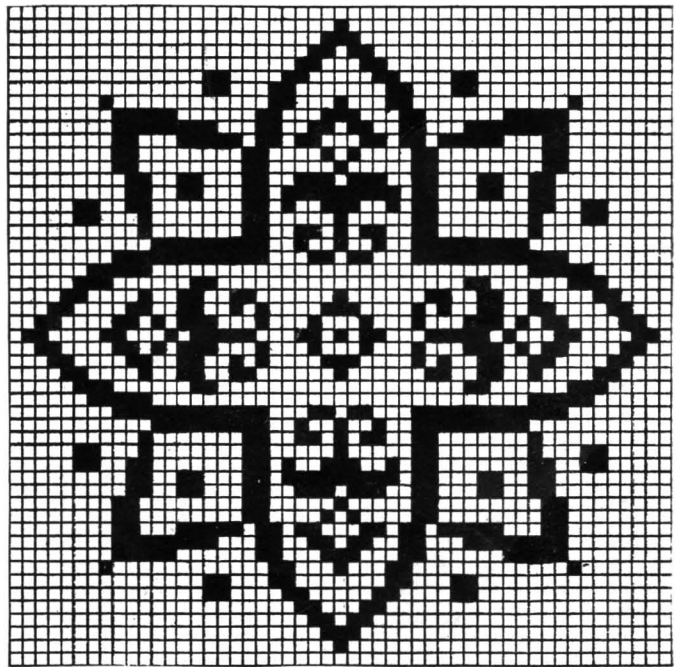


Fig. 67

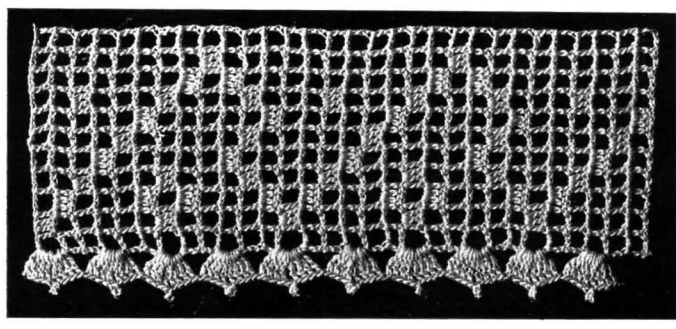


Fig. 68 (See Fig. 64)

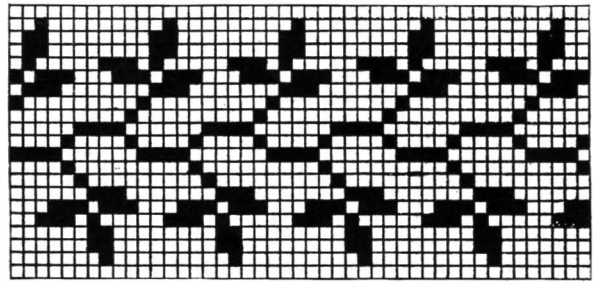


Fig. 70

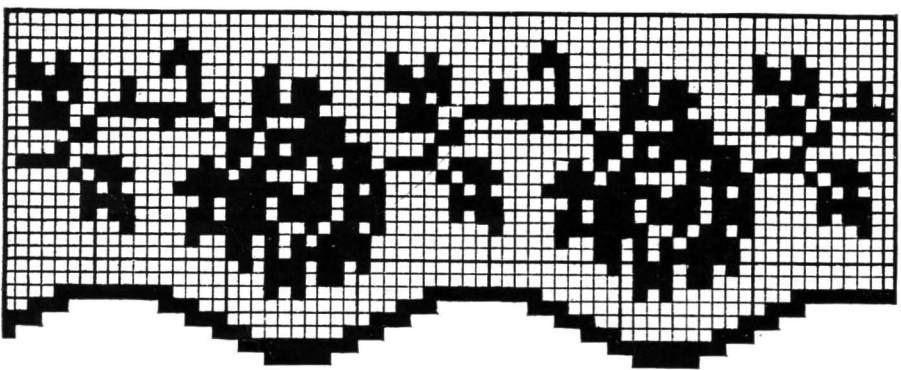


Fig. 71

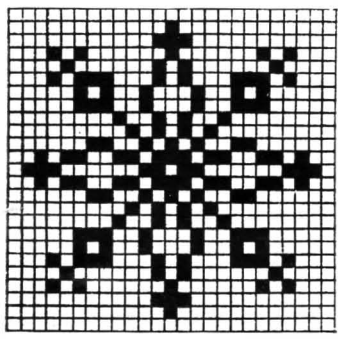


Fig. 72

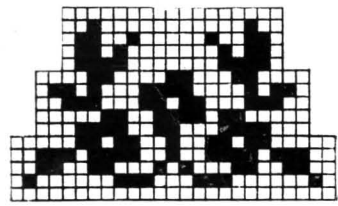


Fig. 75

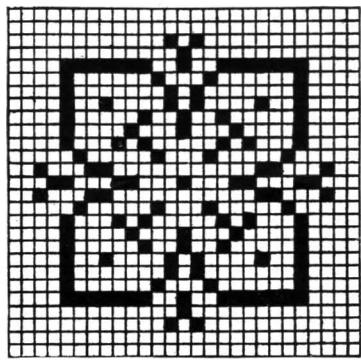


Fig. 73

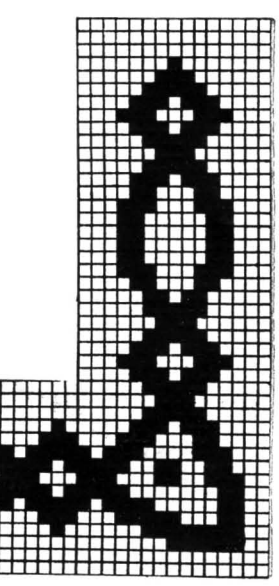


Fig. 69

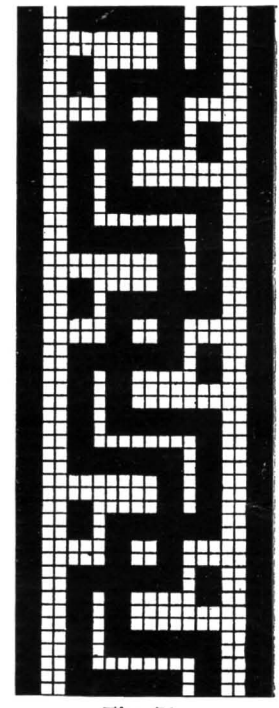


Fig. 74

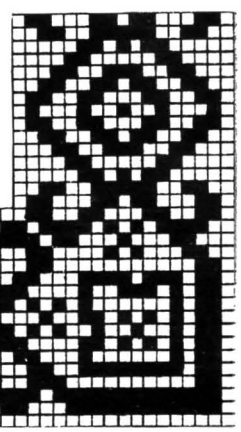


Fig. 76

