

The Antique Pattern Library

For more information, please see our website at: <http://www.antiquepatternlibrary.org>



This is a scan of an antique book that is, to the best of our knowledge, in the public domain. The scan itself has been photo-edited for readability, and is licensed under the **Creative Commons** Attribution-NonCommercial-ShareAlike License. To view a copy of this license, visit <http://creativecommons.org/licenses/by-nc-sa/2.5/> or send a letter to Creative Commons, 559 Nathan Abbott Way, Stanford, California 94305, USA.

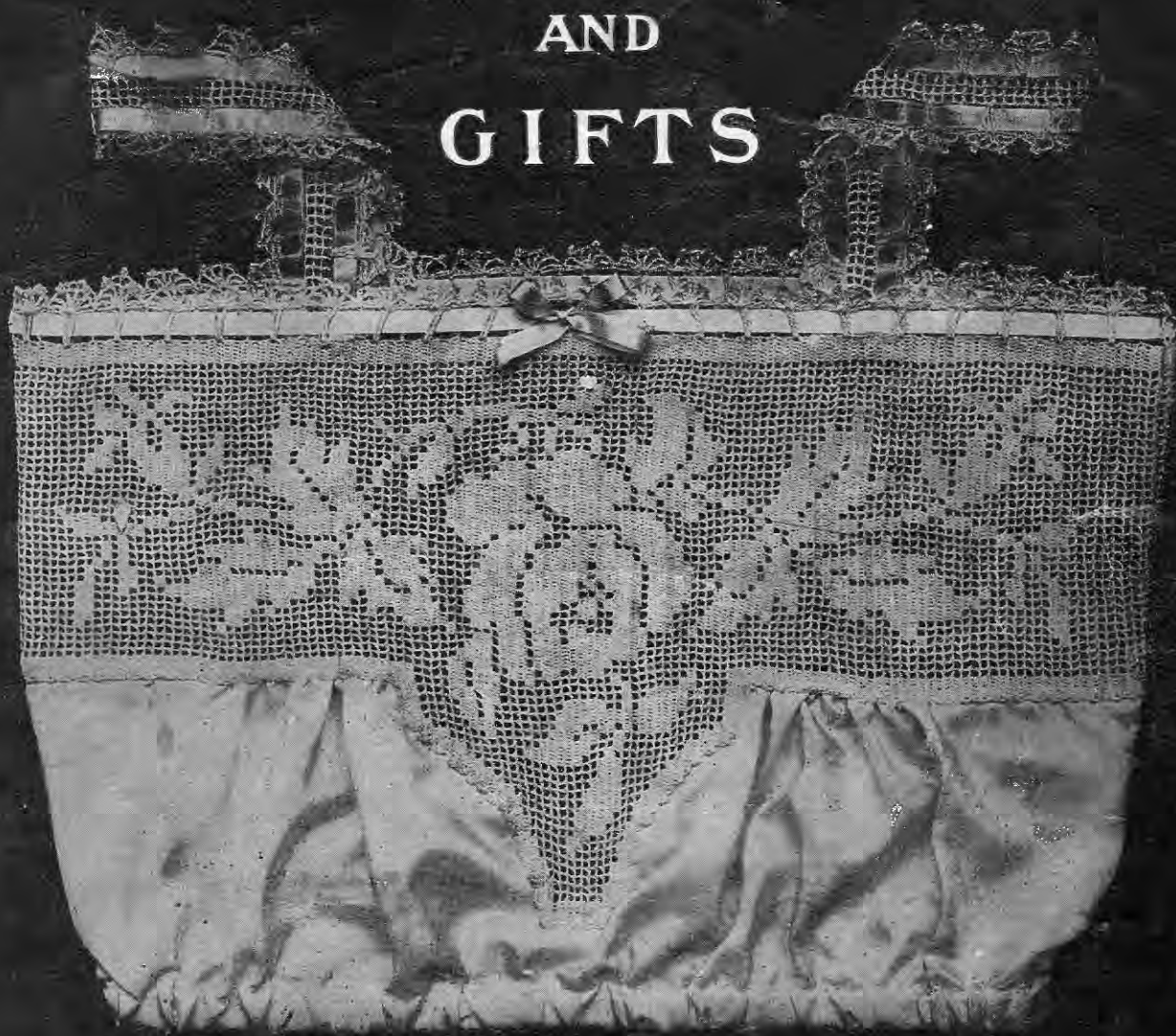
You may share copies or printouts of this scan freely. You may not sell copies or printouts.

Donated by

Jeanette S. Harris

11.2007

J. & P. COATS YOKES AND GIFTS



CROCHET BOOK No. 3

DESIGNED BY
ANNE ORR



COPYRIGHTED 1919
BY
J. & P. COATS (R. I.) INCORPORATED
PAWTUCKET, R. I.

J. & P. COATS YOKES AND GIFTS CROCHET BOOK No. 3

Designed by ANNE ORR

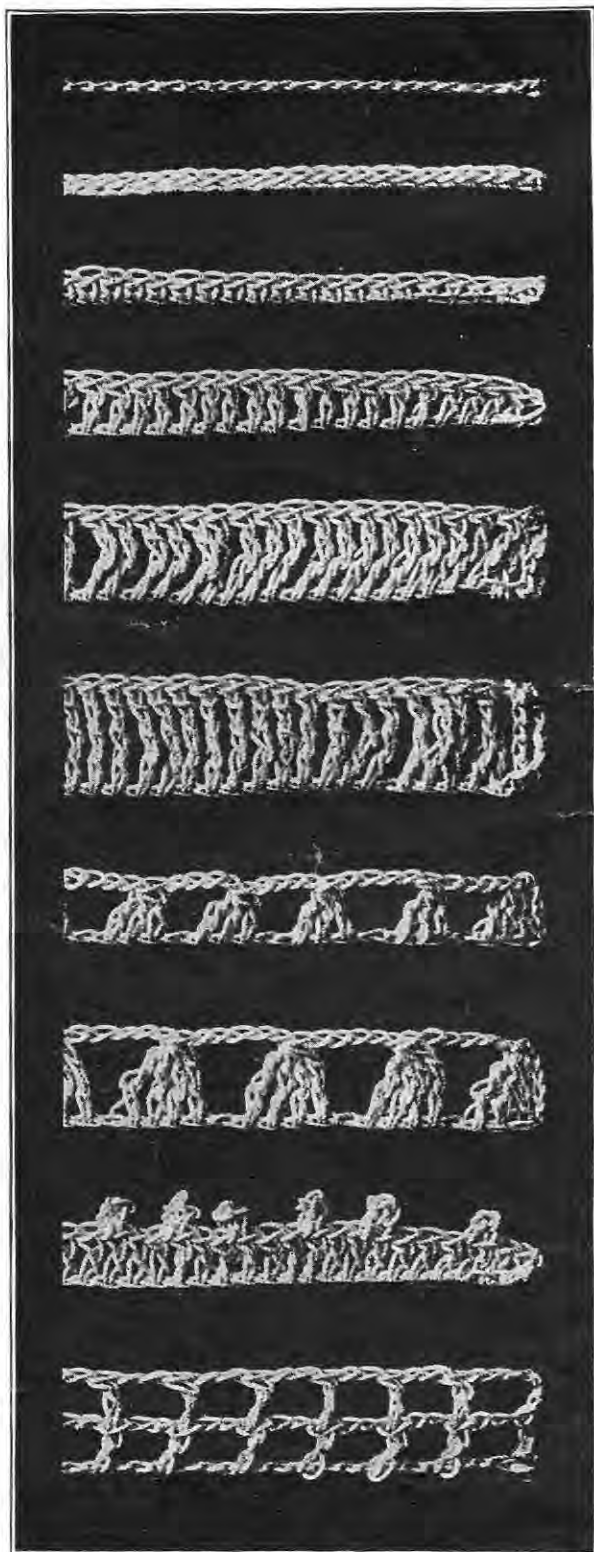
TABLE OF CONTENTS

	Page		Page
Baby Bib.....	14	Foundation Stitches.....	4, 5
Baby Buggy Strap.....	16	Handkerchiefs.....	16
Basket Yoke.....	7	Japanese Collar.....	14
Butterfly Collar.....	14	Lily Yoke with Round Neck.....	11
Camisole in Japanese Flag Design.....	8	Linon and Bow Knot Collar.....	14
Carnation Yoke with Sleeves.....	8	Maple Leaf Yoke.....	6
Clover-leaf Bed Room Set.....	18	Rose Scallop Gown Yoke.....	11
Conventional Scallop Yoke.....	9	Useful Patterns.....	22
Daisy Yoke.....	9	Working Pattern, Carnation Yoke.....	20
Dainty Gifts.....	16	Working Patterns for Collars.....	15
Edgings and Insertions, Working Designs.....	12, 13	Working Pattern for Cover Design.....	6
J. & P. Coats Crochet Books.....	23	Working Pattern for Camisole in Japanese Flag Design.....	21

THAT there is perpetual charm in nearly all crochet work is generally realized, but perhaps there are no articles that make a warmer appeal to lovers of the art of crochet than yokes and other lingerie garments.

There will be no doubt as to the attractiveness and durability of the articles if the novel designs in this book are reproduced with the cotton of superior quality—Coats Mercer-Crochet.

Foundation Stitches and How to Make Them



1. **CHAIN STITCH** (ch)—Is the foundation of all crochet work. Begin by twisting the thread around the needle once, to form a loop, then * throw the thread around the needle and draw through the loop. This forms one chain and is repeated from * for the count or length desired.

2. **SLIP STITCH** (sl st)—Is most frequently used to join rows, or to slip invisibly from one part of the work to another. Having one loop on the needle, insert the needle in the stitch directed, draw the working thread through this stitch and the loop on the needle with one motion, thus making a flat, close stitch.

3. **SINGLE STITCH** (s st)—Having one loop on the needle, insert the needle in the stitch directed, draw the working thread through this stitch, making two on the needle, then draw the working thread through these two loops.

4. **TREBLE CROCHET** (tr)—Having one loop on the needle, throw thread around the needle, insert the needle in the stitch directed, draw working thread through this stitch, making three loops on needle, draw working thread through two loops and then through the remaining two loops. Three chains equal one treble in measure and in count.

5. **DOUBLE TREBLE CROCHET** (d tr)—Is made similarly to the treble, the difference being that the thread is thrown around the needle twice and the loops are worked off two at a time for three repeats.

6. **TRIPLE TREBLE CROCHET** (tr tr)—Has the thread thrown around the needle three times and the loops are worked off two at a time for four repeats.

7. **HALF TREBLE CROCHET** (h tr)—Is sometimes called "group stitch." Having a loop on the needle, throw thread over, insert needle in stitch directed, draw working thread through, draw through two loops, leaving two loops on needle, * thread over, needle in next stitch, draw thread through, draw through two loops, leaving three loops on needle, repeat from *, leaving four loops on needle, then draw thread through all four loops.

8. **HALF DOUBLE TREBLE** (h d tr)—Is made in the same manner, leaving the last operation of each double treble until the required number have been made and then taking off all the stitches at once.

9. **PICOTS** (p)—Are usually made by a chain of three or five, then a slip stitch in the first chain. When there is a variation of the above, it is specifically given in the directions.

10. **SPACES** (sp)—Are the open meshes of filet crochet. To form a space, make one treble, then chain two, skip two stitches of previous row and make another treble. This should result in a perfect square but perfection requires persistent practice as well as the correct sizes of needle and thread. For a space at the beginning of a row, chain five, which allows three for the treble on the edge, and two for the usual chain, two at top of space.

Foundation Stitches and How to Make Them

11. **BLOCKS (bl)**—Are formed by working trebles in adjoining stitches for the required number. Where blocks are consecutive there are four trebles in the first block and three trebles in each following block. Therefore, to find the number of trebles in a row of blocks, multiply the number of blocks by three and add one; in two blocks there are seven trebles, in three blocks, ten trebles, etc.

12. **BLOCKS AND SPACES**—This illustration clearly shows the alternation of blocks and spaces in filet crochet. Counting from right to left, as the work is made, there are one block, two spaces, three blocks, one space. The next series of blocks is cut off. This would read in directions, 1 bl, 2 sp, 3 bl, 1 sp.

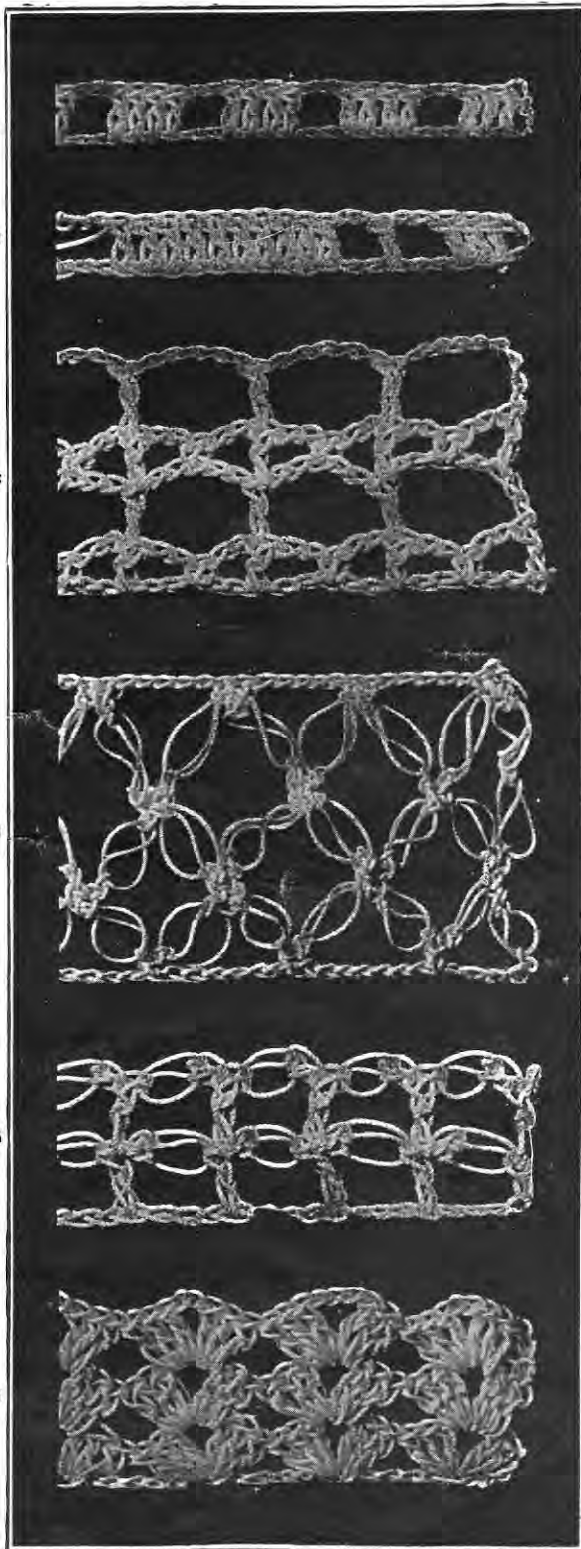
13. **LACE STITCH**—Make a foundation chain. **1st Row**—Allow three chains for edge treble, two for two chains and two more for two skipped stitches, work a single stitch in the next chain, * ch 2, skip 2, tr in next, ch 2, sk 2, s st in next. Repeat from * for row.

2d Row—Ch 3 for edge tr, ch 5 more, then tr in tr. * ch 5, tr in tr. Repeat from * for row. Repeat these two rows for the pattern.

14. **KNOT STITCH (k st)**—Variously known as Hail Stone or True Lovers' Knot, is made thus: Having one loop on the needle, draw it out to the length of 3 ch, thread over the needle and draw through, making an ordinary chain stitch, drawn out to three times its normal length. Then put the needle under that one of the 3 threads of the long loop which seems to lie by itself, draw the thread through and make a single stitch. This is the knot stitch. It is usually worked by making two, then fastening to the previous row by a single stitch unless the row was knot stitch, in which case, work one single stitch each side of the single stitch between the two long loops or knot stitches.

15. **LATTICE STITCH (lat st)**—Is combination of single knot stitches and trebles. Work a chain, then make one knot stitch, allow three chains for the first treble, and three for the skipped stitches, work a tr in next ch, * one knot stitch, sk 3 ch, 1 tr. Repeat for length desired. This row is repeated for the pattern, working the tr in tr, each time, bringing the knot stitches over each other.

16. **SHELL (sh)**—May be worked with tr, d tr, or longer, stitches. They are made up of a given number of stitches on each half, separated by a given number of chain stitches. When worked on a foundation chain, a given number of stitches are skipped. When worked over another row of shells, each one is placed in the chain between the halves of the previous shell, or between two shells. In the illustration, the directions would be as follows: Having a chain, allow 3 for the first tr, two tr in 4th chain from needle, ch 2, 3 tr in same chain as last tr, * skip 5 ch, in 6th ch work, 3 tr, 2 ch, and 3 tr. Repeat from * across row. Ch 3 and turn at end of row. Second and all other rows, shell in shell



Maple Leaf Yoke

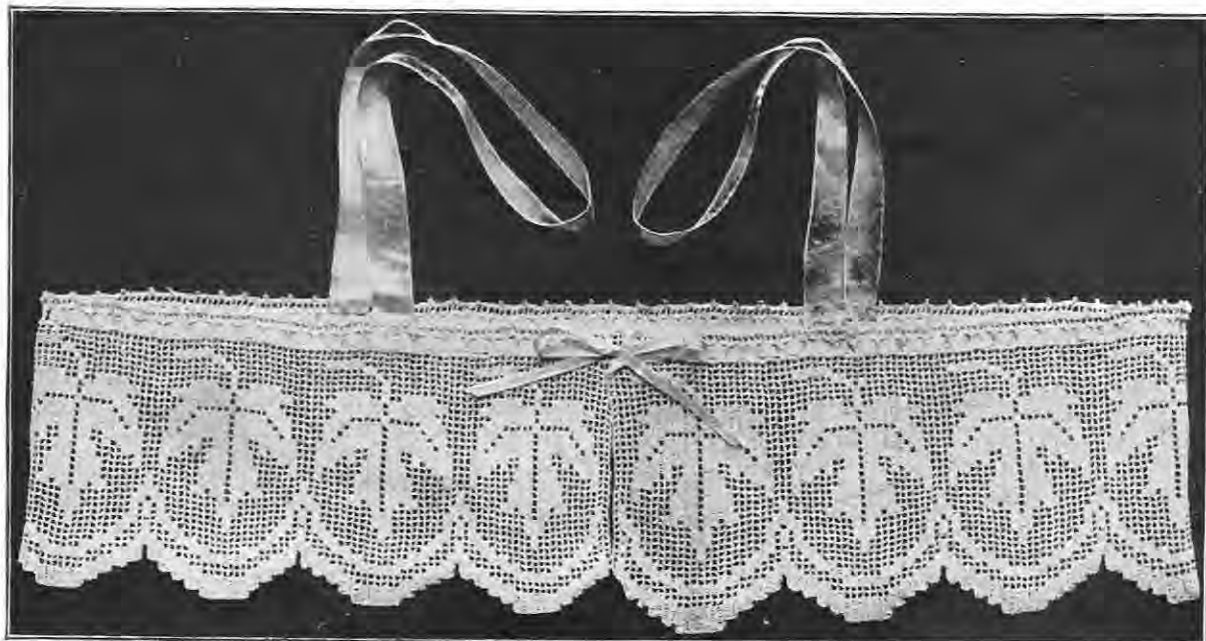
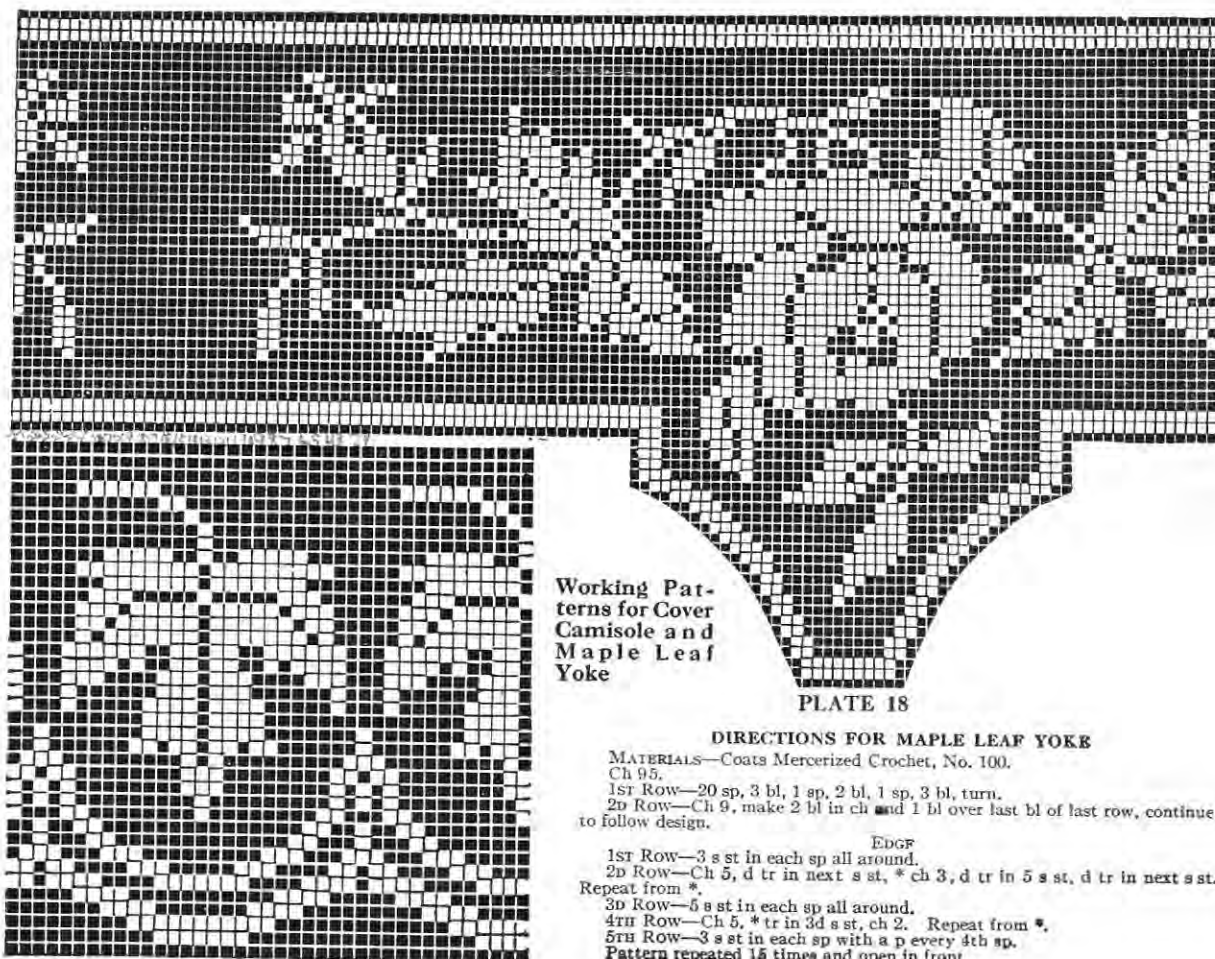


PLATE 17



Working Pat-
terns for Cover
Camisole and
Maple Leaf
Yoke

PLATE 18

DIRECTIONS FOR MAPLE LEAF YOKK

MATERIALS—Coats Mercerized Crochet, No. 100.

Ch 95.

1st Row—20 sp, 3 bl, 1 sp, 2 bl, 1 sp, 3 bl, turn.

2d Row—Ch 9, make 2 bl in ch and 1 bl over last bl of last row, continue to follow design.

EDGE

1st Row—3 s st in each sp all around.

2d Row—Ch 5, d tr in next s st, * ch 3, d tr in 5 s st, d tr in next s st. Repeat from *.

3d Row—5 s st in each sp all around.

4th Row—Ch 5, * tr in 3d s st, ch 2. Repeat from *.

5th Row—3 s st in each sp with a p every 4th sp.

Pattern repeated 15 times and open in front.

PLATE 19

Yoke in Basket Design

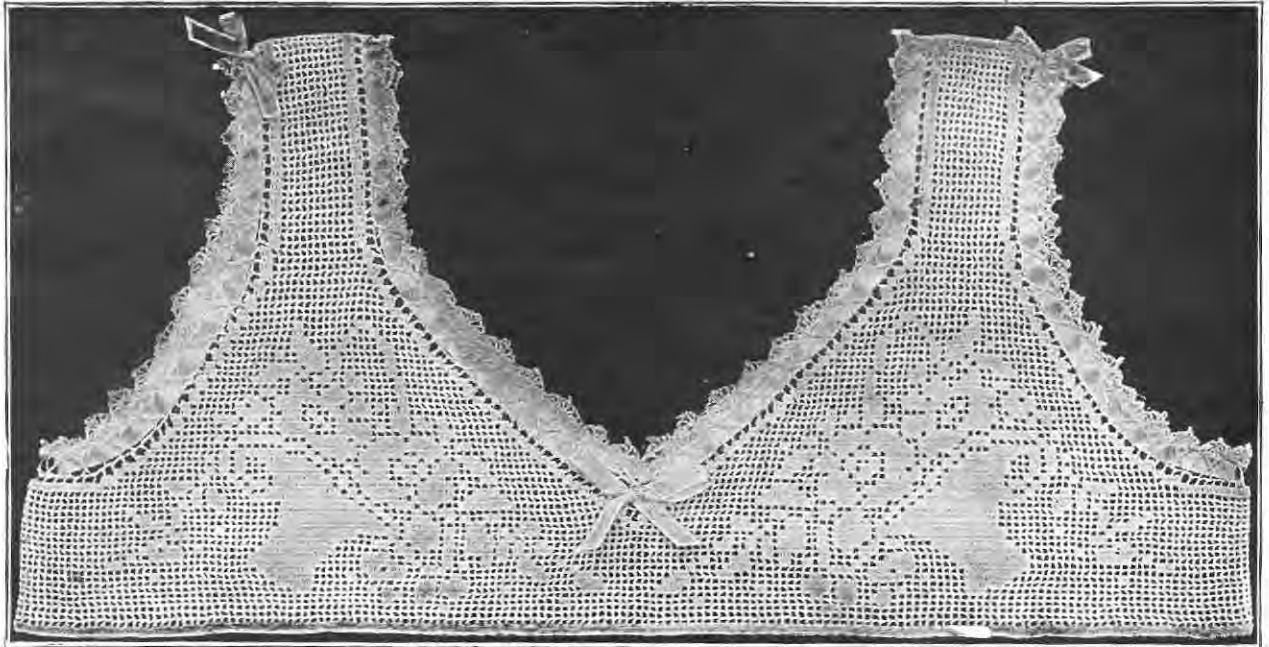


PLATE 20

DIRECTIONS FOR YOKE IN BASKET DESIGN

MATERIALS—Coats Mercerized Crochet, No. 80. No. 14 Steel Hook.

Commence at bottom, working around.

Ch 987.

1ST ROW—328 bl.

2D AND 3D ROWS—328 sp, then follow design, dropping off bl at edge of front and shoulder to form points.

Back is made just like the front.

1 row sp around neck and arm-holes

BEADING

Fasten in sp, ch 8, * 1 d tr in 3d sp, ch 3, 1 d tr in 2d sp at the right of the last d tr, ch 2, 1 d tr in next sp at the left of the 1st d tr, ch 2. Repeat from *. This will form a beading of one bar and one cross alternately.

EDGE

Fasten in top of the bar or first d tr, * 1 tr in ch of 3 of last row or in the center of the cross, ch 2, 1 tr in same place, ch 2, 1 tr in same place, 1 p, ch 1, 1 tr in same place, ch 1, 1 tr in same place, ch 1, 1 tr in same place, 1 s st in top of next bar. Repeat from *. Make beading and edge around neck and arm-holes.

DIRECTIONS FOR ROSE YOKE ON COVER

MATERIALS—Coats Mercerized Crochet, No. 50. No. 13 Steel Hook.

Commence under arm.

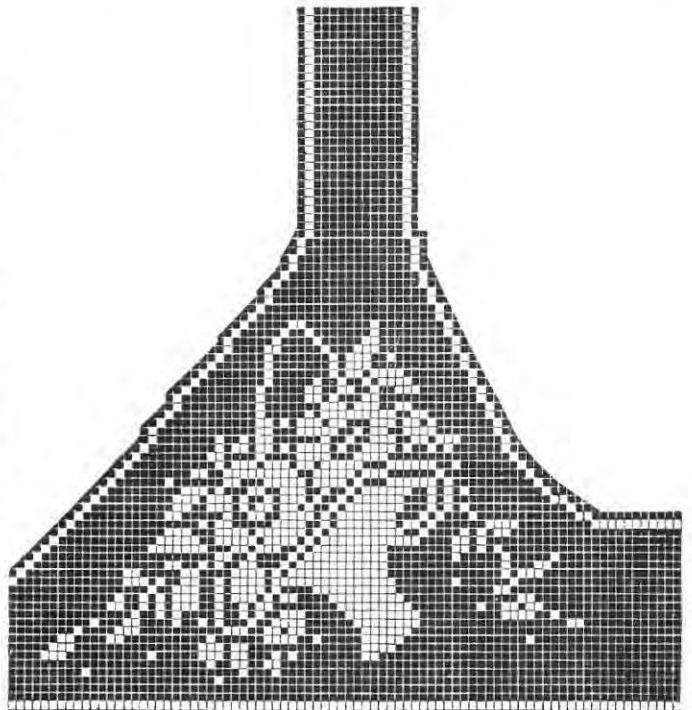
Ch 120.

1ST 14 ROWS—2 bl, 35 sp, 2 bl. Commence and follow design, adding meshes to form drop in front and back as shown in design. This makes size 34 bust. If a larger size is desired, add more open meshes under arm.

BEADING AROUND TOP—Fasten in top of blk. Ch 8. * 2 tr tr in 3d bl, ch 3, 1 tr tr in 3d bl, ch 3. Repeat from *.

EDGE—Fasten in top of 1 tr tr, * 1 d tr over first group of 2 tr tr, ch 2, 1 d tr in same place, 1 p, ch 2, 1 d tr in same place, ch 2, 1 d tr in same place, 1 p, ch 2, 1 d tr in same place, ch 2, 1 d tr in same place, s st over next tr tr. Repeat from *.

SHOULDER STRAP—Ch 14 inches long. Make 3 rows sp length of ch, make beading and scallop like neck on each edge of strap.



Working Pattern for Basket Yoke

PLATE 21

Carnation Yoke with Sleeves

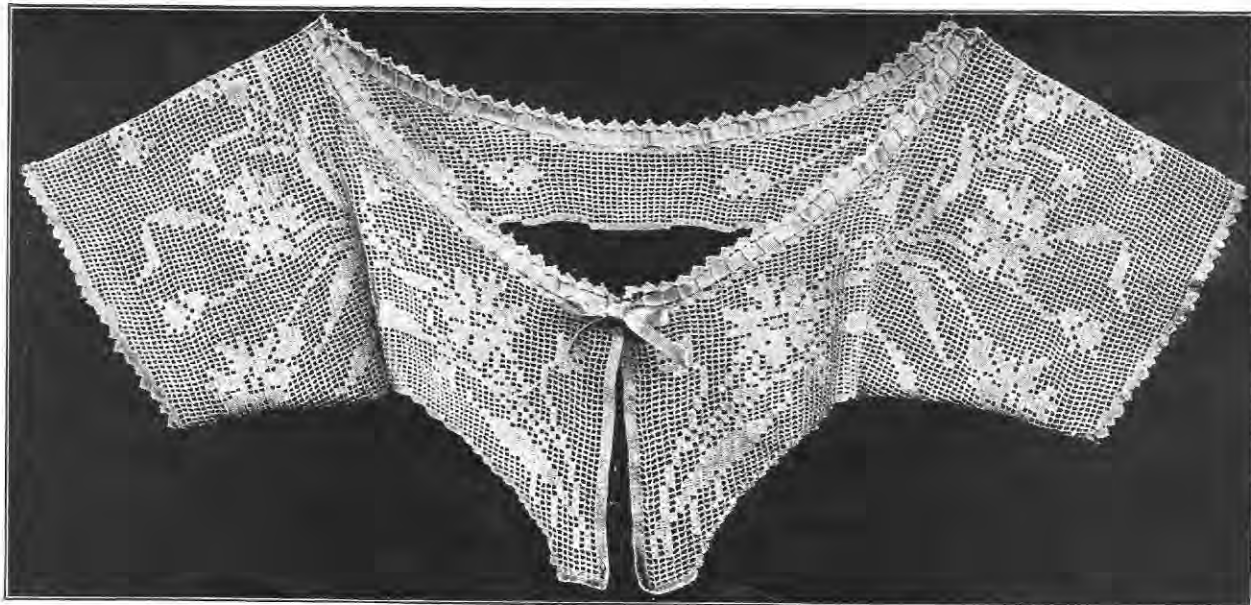


PLATE 22

(Working Pattern for Carnation Yoke found on Page 20)

Camisole in Japanese Flags



PLATE 23

(Working Pattern for Japanese Flag Yoke found on Page 21)

Daisy Yoke with Sleeves



PLATE 24

(Working Pattern for Daisy Yoke found on Page 10)

DIRECTIONS FOR DAISY YOKE

MATERIALS—Coats Mercerized Crochet, No. 70. No. 13 Hook.

Commence work at lower edge of back, working across back and both sleeves. Ch 423.

1st Row—2 blk, 3 sp, 4 blk, 1 sp, 1 blk, 2 sp, 3 blk, 5 sp, 101 blk, 5 sp, 3 blk, 2 sp, 1 blk, 1 sp, 4 blk, 3 sp, 2 blk. Follow design, adding or dropping off blk on edge to form scallop. When 20 rows are completed, drop off 61 sp in center for middle of back and work one shoulder, then break thread and make the other shoulder, join the two shoulders with a ch of 183, on which make 61 sp for front. Continue the front and both shoulders till the front is 20 rows wide, then drop off the middle meshes, all but 21 meshes on each edge. Continue those to form scallops for sleeves till there are 5 scallops for each sleeve.

BEADING—Fasten in sp ch 8, * 1 d tr in 2d sp, ch 3. Repeat from *.

EDGE—Fasten over d tr, * ch 3, 1 tr over next d tr, 1 p, ch 1, 1 tr in same place, 1 p, ch 1, 1 tr in same place, ch 3, sc over next d tr. Repeat from *.

Conventional Scalloped Yoke

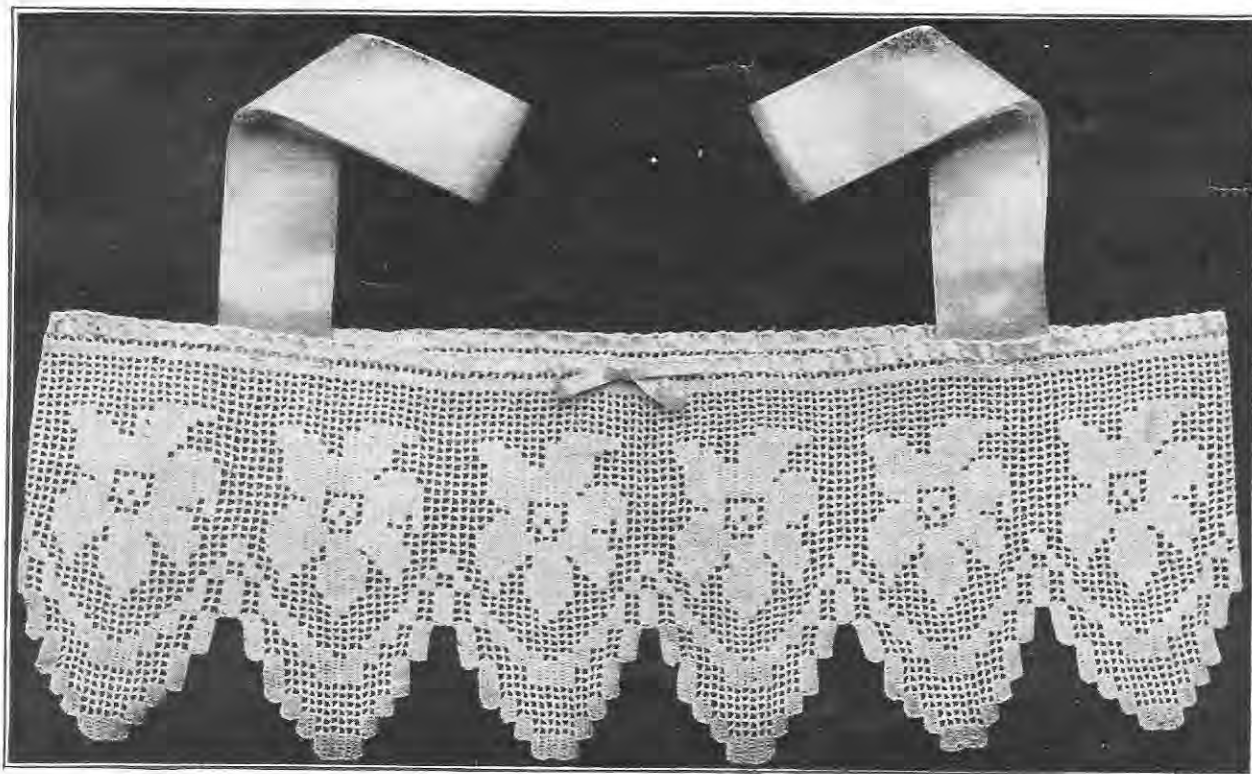
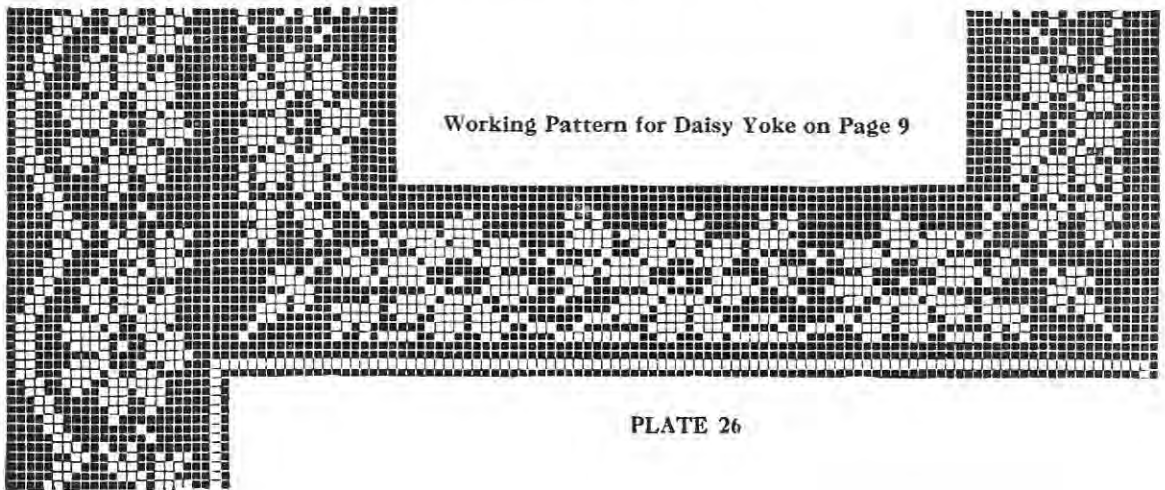


PLATE 25

(Working Pattern for Conventional Scalloped Yoke found on Page 17)

Working Patterns



Working Pattern for Daisy Yoke on Page 9

PLATE 26

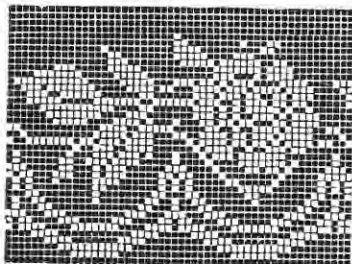


PLATE 27

Working Pattern for Rose Scallop Yoke on page 11

DIRECTIONS FOR LILY YOKE

MATERIALS—Coats Mercerized Crochet, No. 60. No. 12 Steel Hook.

Commence at bottom of front, working crosswise.

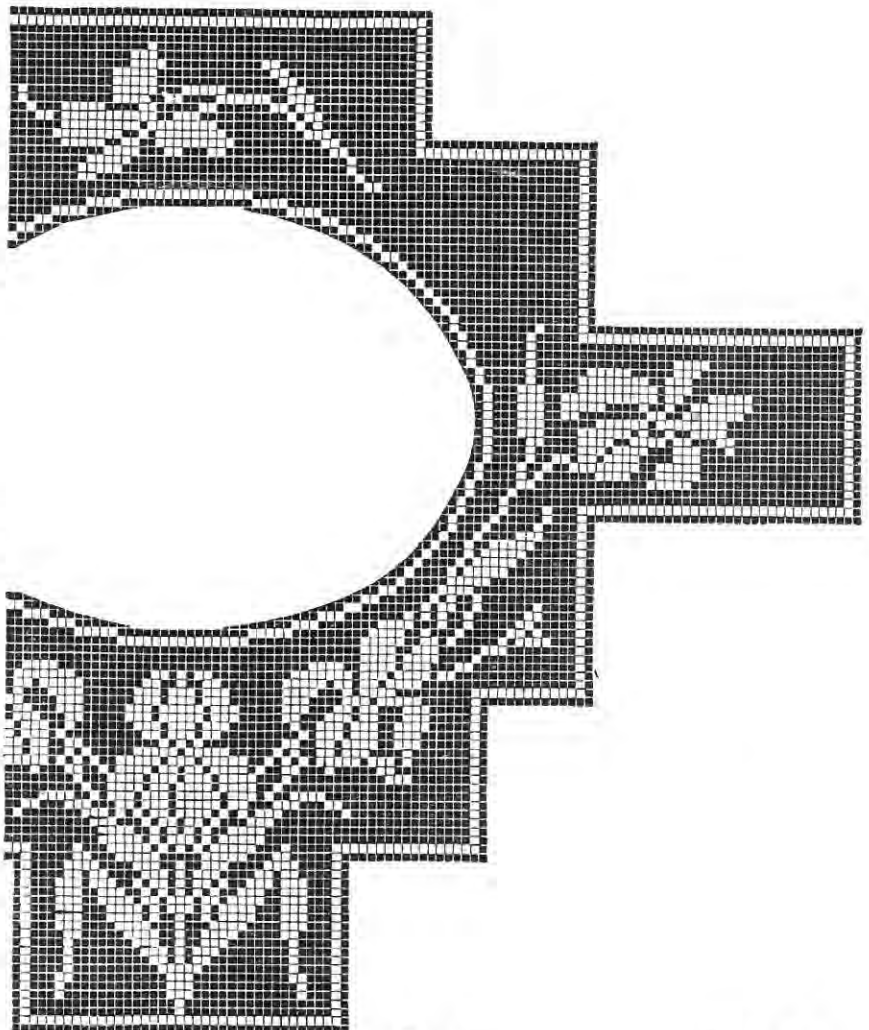
Ch 122.

1st Row—39 sp.

2d Row—1 sp, 37 bl, 1 sp, follow design, adding meshes to form the square points; when they are added at one side it will be necessary to take another piece of crochet cotton and make a chain for a foundation on which to make the sp.

EDGE AROUND LOWER EDGE—Fasten in sp, * ch 3, tr in 2d sp, 1 p, tr in same sp, 1 p, tr in same sp, ch 3, s st in 2d sp. Repeat from *.

NECK—1 row sp, beading, as follows: * 1 d tr over tr, ch 2. Repeat from *. Edge around neck like bottom.



Working Pattern for Lily Yoke on Page 11

PLATE 28

Rose Scallop Gown Yoke



PLATE 29

DIRECTIONS FOR ROSE SCALLOP GOWN YOKE

MATERIALS—Coats Mercerized Crochet, No. 60. No. 12 Steel Hook.

Ch 101.

1ST ROW—1 sp, 1 bl, 6 sp, 1 bl, 3 sp, 3 bl, 1 sp, 2 bl, 1 sp, 3 bl. Follow design, adding bl at lower edge to form scallop.

14 scallops make 40-inch bust.

SHOULDER STRAPS—6 sp wide and 110 rows long.

(Working Pattern for Rose Scallop Yoke found on Page 10)

BEADING AROUND NECK—3 d tr in 1st sp, * ch 3, 1 d tr in 2d sp, ch 3, 3 d tr in 2d sp. Repeat from*.

EDGE AROUND NECK AND EACH EDGE OF SHOULDER STRAPS—3 s st in first three sp, 1 p, repeat around.

2D ROW—1 s st half way between 2 p, ch 12. Repeat around.

3D ROW—5 s st around ch, 1 p, 5 s st in same ch, 1 p, 5 s st in same ch, s st over s st. Repeat.

Lily Yoke with Round Neck

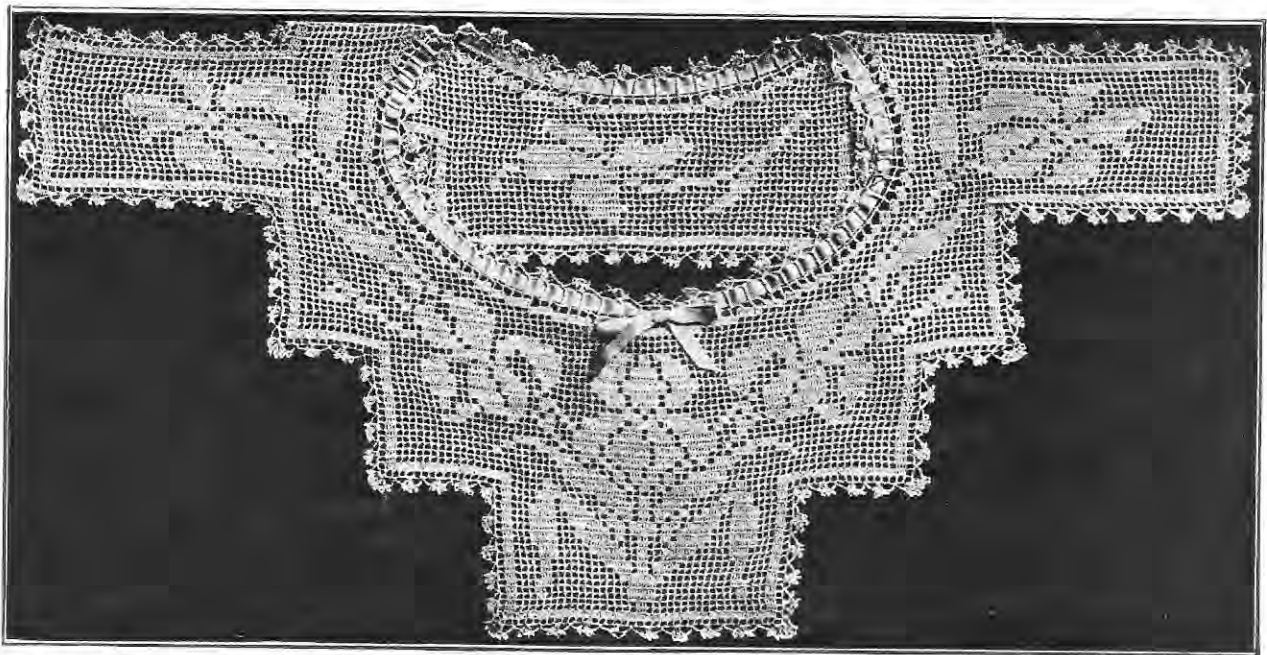


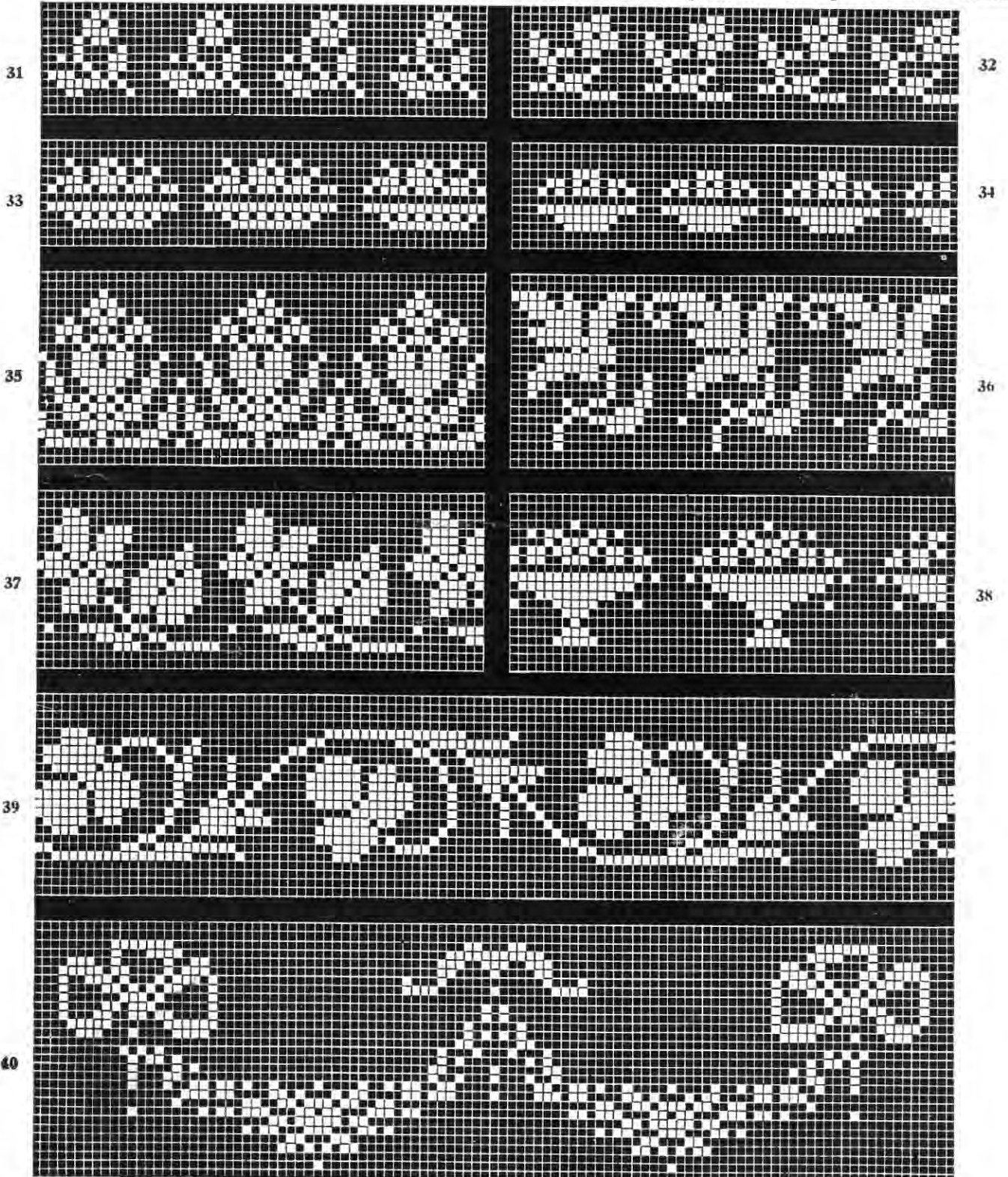
PLATE 30

(Working Pattern for Lily Yoke found on Page 10)

Insertions and

Four plates at top, plates 31, 32, 41 and 42, of these pages suggest uses for the nursery and baby's clothes.
Plates Nos. 33, 34, 35, 36, 38, 43, 44, 45 and 46 suggest pretty and appropriate trimmings for the dining room uses, such as in this room.

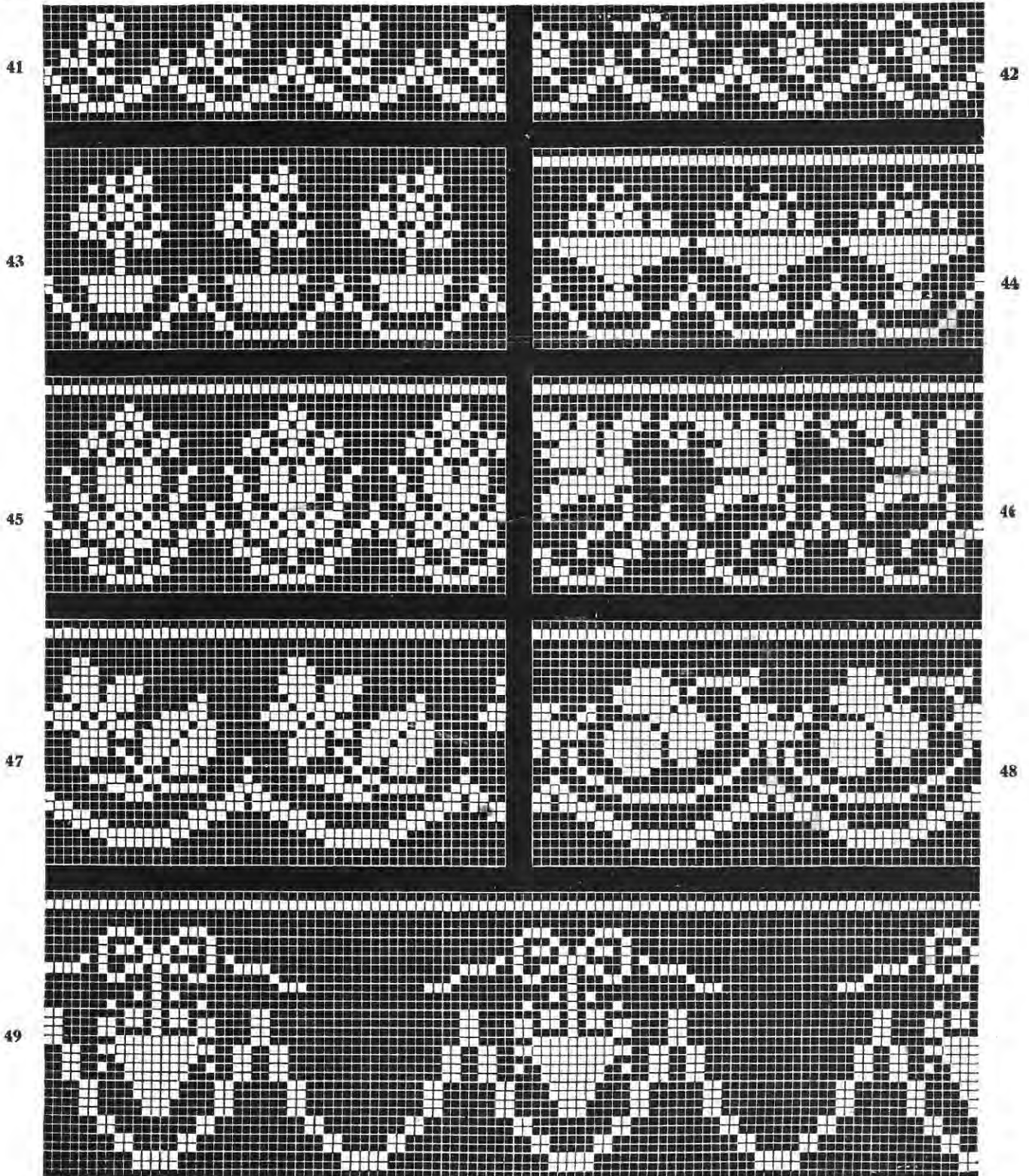
Plates 37, 40, 47 and 49 are more appropriate for the decoration of the bedroom, consisting of towel insertions and edgings, room decorations, and thereby gain a great deal of pleasure and originality from the patterns. Uses of plates 39 and 48 are illustrat



PLATES 31 TO 40

Edgings to Match

covers for sideboard and buffet, strips and square doilies for table use, curtain edgings for the dining room, and inserts for the shades of window cases, sheets, curtains, etc. The worker can make combinations of these drawings that will give an original value to her own work on page 18.



PLATES 41 TO 49

Collars

LINEN AND BOW-KNOT COLLAR

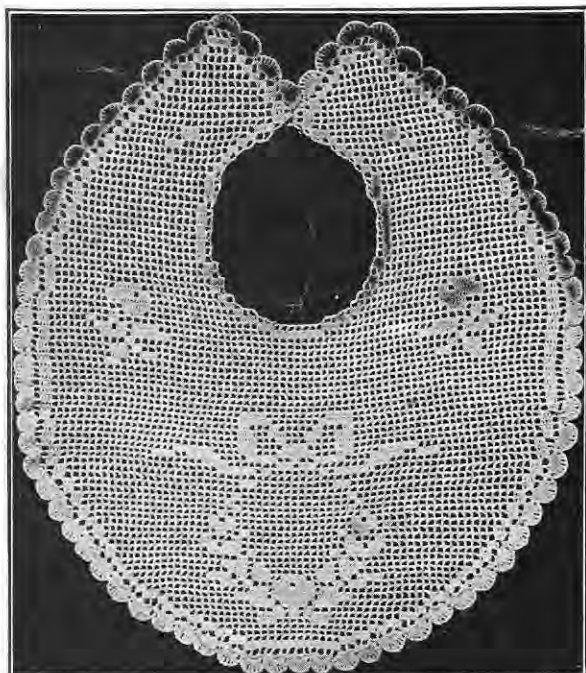


PLATE 50

COAT COLLAR IN JAPANESE DESIGN



BABY BIB



(Working Pattern for Baby Bib-found on Page 17)

PLATE 51—DIRECTIONS FOR BABY BIB

MATERIALS—Coats Mercerized Crochet, No. 100
Ch 43.

1st Row—13 sp.

2d Row—Increase 2 sp on each end, follow design, increasing as shown in design.

EDGE FOR BIB—Fasten cotton in sp, * 10 tr in 2d sp, 1 s st in 2d sp. Repeat from *.

2d Row—* 1 s st over s st, ch 1, 1 tr over each tr with 1 ch between each tr, ch 1. Repeat from *.

PLATE 52—DIRECTIONS FOR JAPANESE COLLAR

MATERIALS—Coats Mercerized Crochet, No. 80.

Commence across one end at the top of point. Ch 86.

1st Row—1 sp, 1 bl, 8 sp, 1 bl, 1 sp, 5 bl, 7 sp, 2 bl, 1 sp.

2d Row—1 sp, 1 bl, 2 sp, 3 bl, 3 sp, 4 bl, 1 sp, 2 bl, 8 sp, 1 bl, 1 sp. Follow design till there are 8 times over pattern, then drop off meshes to form point on end, commence back at place of beginning and make point on that end like the other point.

Work lengthwise on inside edge 5 rows of open meshes to form an edge to turn under dress.

EDGE—Fasten in top of tr, * 5 tr in 2d sp, 1 p, 5 tr in same sp, s st in 2d tr. Repeat from *.

BUTTERFLY COLLAR



PLATE 53

Working Patterns for Collars on Opposite Page

DIRECTIONS FOR BUTTERFLY COLLAR ILLUSTRATED ON PAGE 14

MATERIALS—Coats Mercerized Crochet, No. 80. Steel Hook No. 14.
Ch 289. 1st Row—286 tr. 2d Row—1 bl, 93 sp, 1 bl. 3d, 4th AND 5th ROWS—Like 2nd, then commence and follow design.

EDGE—Ch 10. 1st Row—7 tr. 2d Row—1 sp, 2 bl, follow design, adding 1 bl on lower edge till you get to the longest part of the point, then drop off 1 bl each time to the narrowest part. After finishing edge it is to be sewed to collar.

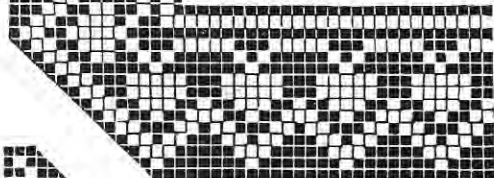


PLATE 55

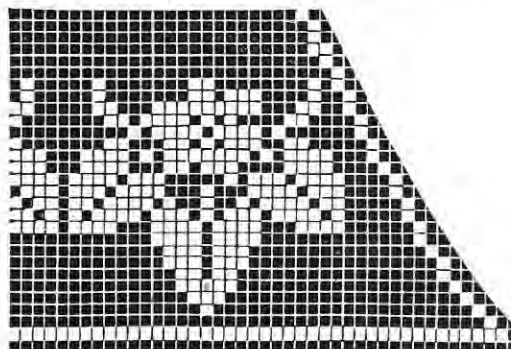


PLATE 56

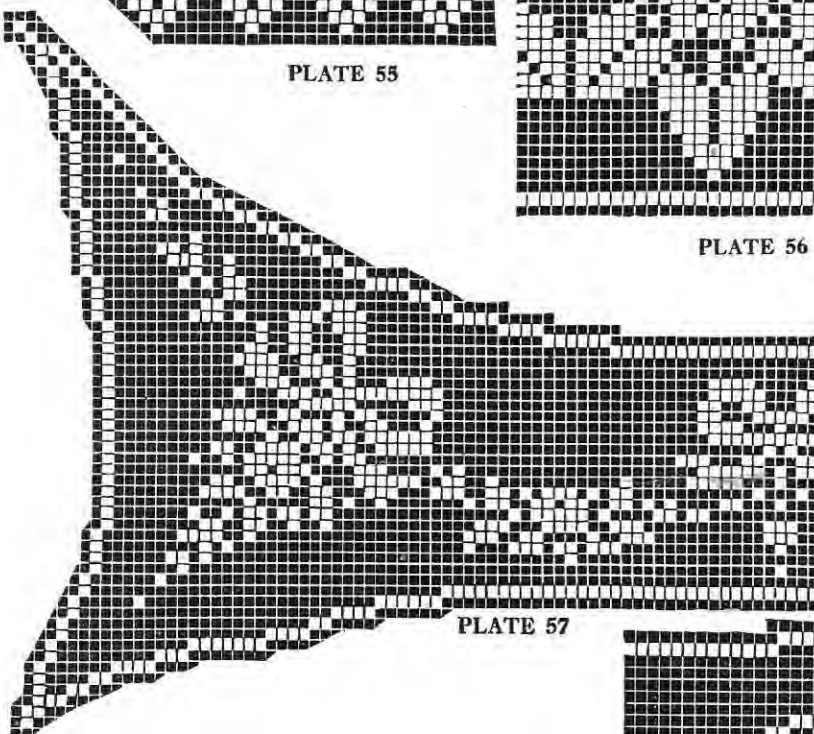


PLATE 57

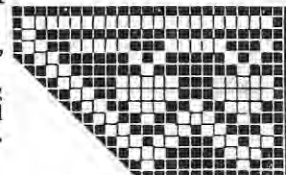


PLATE 54

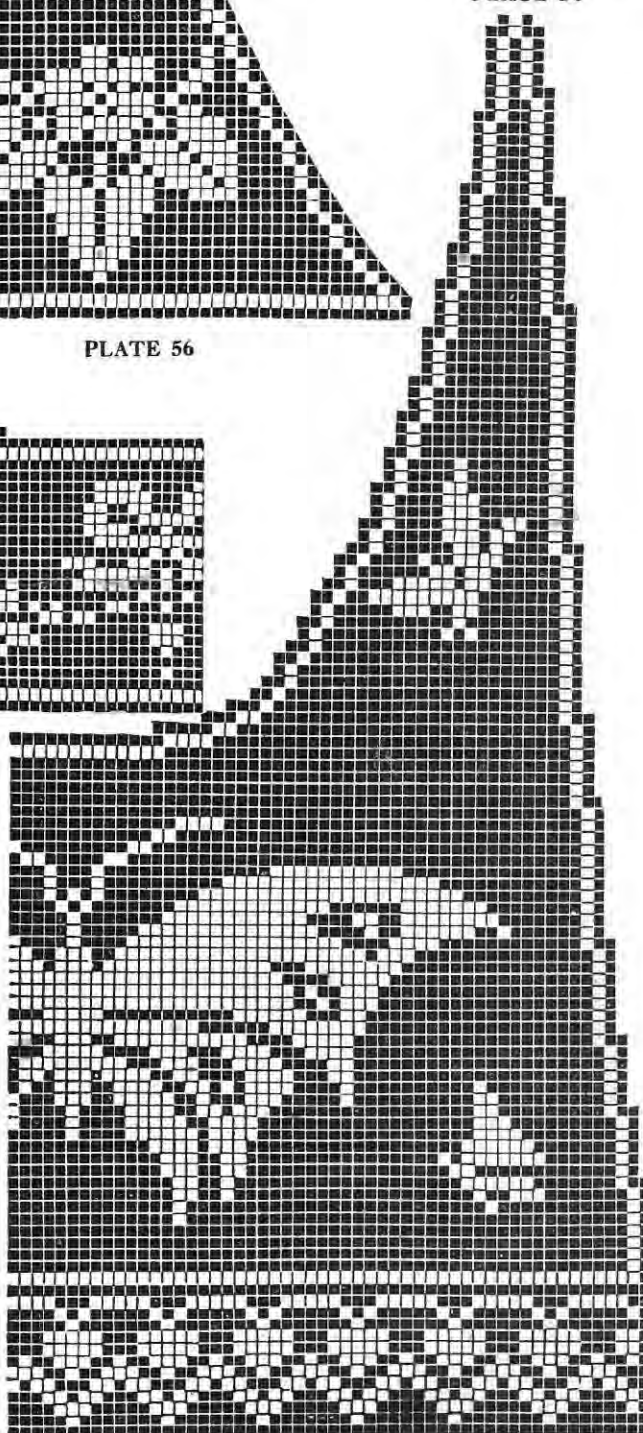


PLATE 58

DIRECTIONS FOR LINEN AND BOW-KNOT COLLAR ILLUSTRATED ON PAGE 14

MATERIALS—Coats Mercerized Crochet, No. 100. No. 14 Steel Hook.

Commence at top of back.

Ch 15.

1st Row—4 bl.

At each row add more blocks as shown in design. Follow design.

For foundation use handkerchief linen, turn hem in linen 1-8 inch wide and cover hem with s st all around, except neck. Sew crochet to back. Around the linen work the edge as follows:

1st Row—Sp all around linen except neck.

2d Row—Bl all around linen except neck.

EDGE ON LINEN AND CROCHET

1st Row—Ch 8, s st in 3d blk. Repeat.

2d Row—Ch 8, s st in center of ch of last row.

3d Row—Ch 8, s st in center of ch of last row, 1 p. Repeat. Finish neck with binding of linen bow-knot.

Dainty Gifts



PLATES 59 TO 62

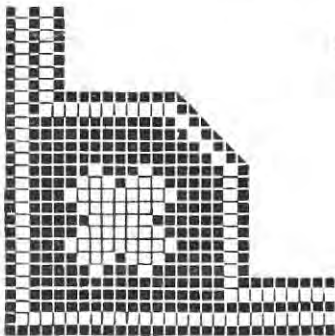


PLATE 63
Working Patterns for Handkerchief Corners

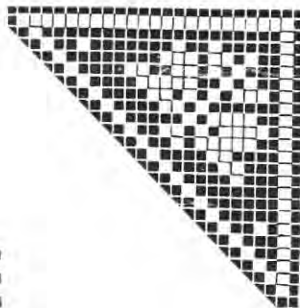


PLATE 64

DIRECTIONS FOR RED CROSS CORNER Plate 59

MATERIALS—Coats Mercerized Crochet, No. 100.
Ch 59.

1ST ROW—1 bl, 16 sp.

2D AND 3D ROWS—Like 1st row.

Then follow design. Make 2 rows sp all around linen and corner.

4TH ROW—4 s st in each sp, with a p every 4th sp.

BUTTERFLY CORNER Plate 60

MATERIALS—Coats Mercerized Crochet, No. 100.
Ch 69.

1ST ROW—22 sp.

Decrease 1 sp on each row and follow design.

Roll hem in linen and cover with s st.

1ST ROW—Sp all around linen and corner.

2D ROW—3 sp, 1 bl, repeat all around.

3D ROW—Sp all around.

4TH ROW—3 s st in each sp, with a p every 4th sp.

ROSE CORNER Plate 61

MATERIALS—Coats Mercerized Crochet, No. 100.
Ch 68.

1ST AND 2D ROWS—21 sp, then follow design.

Roll hem and s st around linen and corner.

EDGE—Ch 6, s st in 4 s st, repeat.

2D ROW—* Ch 5, dc in center of next loop, ch 3, 1 p, ch 3, dc in same loop, ch 5, s st in next loop. Repeat from *.

CONVENTIONAL CORNER Plate 62

MATERIALS—Coats Mercerized Crochet, No. 100.
Ch 68.

1ST ROW—21 sp.

2D ROW—21 sp, then follow design, 1 row s st around corner.

Roll hem in handkerchief and cover hem with s st, crochet around 2 sides of inset as follows: Fasten cotton in 1st s st at corner, ch 3, * 1 tr in next s st, ch 3, 1 tr in 4th s st. Repeat from *, sew inset in corner, work all around handkerchief the same as around the two sides of inset.

NEXT ROW—* 6 s st in sp, 3 s st in next sp, 1 p, 3 s st in same sp. Repeat from *.



Working Pattern for Strap found on Page 17)

DIRECTIONS FOR BABY BUGGY STRAP

MATERIALS—Coats Mercerized Crochet, No. 40.

Ch 18.

1ST ROW—5 bl.

Add bl at each side, according to design. Follow design.

PLATE 65

Working Patterns

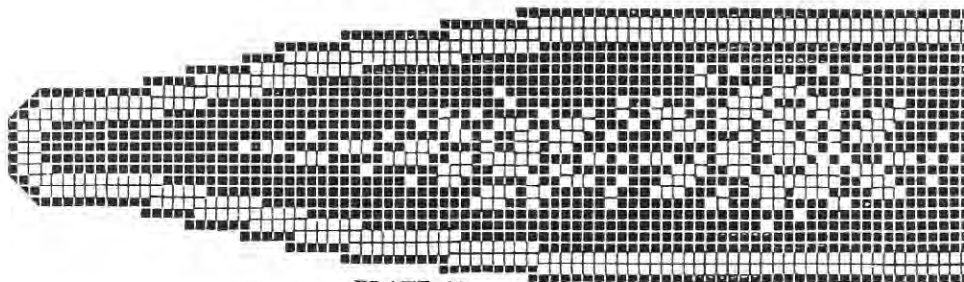


PLATE 66
Working Pattern for Plate 65 on Page 16

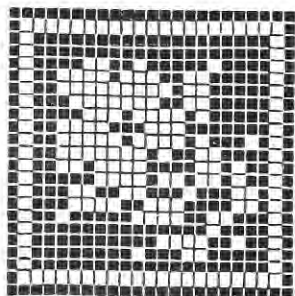


PLATE 67

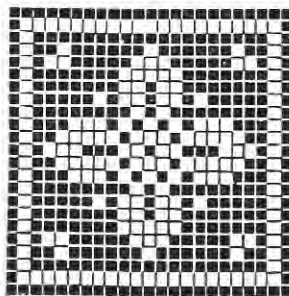


PLATE 68

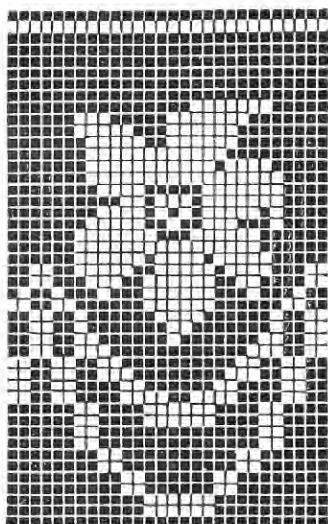


PLATE 69

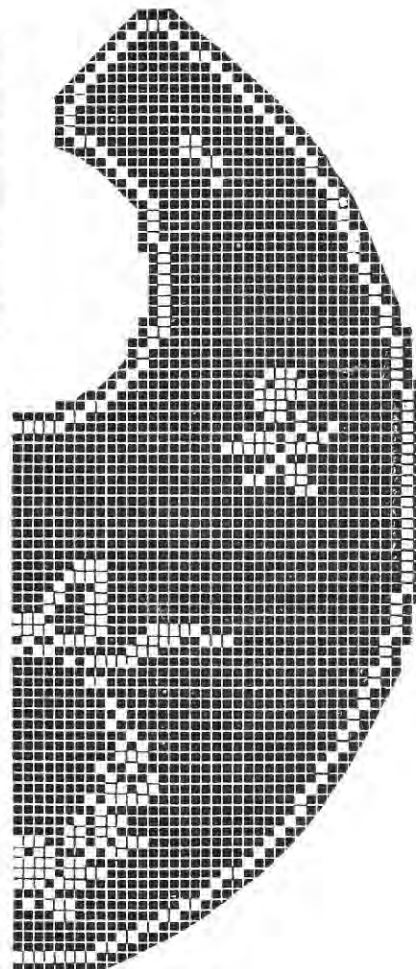


PLATE 70

These working patterns for Handkerchief Corners show a closed mesh around each medallion, so that the worker can use, either with this finish or with the open meshes alone, as the directions and finished handkerchiefs show.

Plate 69 is working pattern for Yoke on Page 9.

Plate 70 is working pattern for Bib on Page 14.

DIRECTIONS FOR CONVENTIONAL SCALLOP YOKE ON PAGE 9

MATERIALS—Coats Mercerized Crochet Cotton, No. 80
No. 14 Hook.

Ch 93, working up and down.

1ST ROW—4 bl, 2 sp, 2 bl, 20 sp, 1 bl, 1 sp.

2d Row—Follow design, adding bl at lower edge to form scallop

12 scallops make 36 bust.

BEADING

Fasten in sp, ch 8, * 3 d tr in 2d sp, ch 3, 1 d tr in 2d sp, ch 3. Repeat from *

The Clover-Leaf Bed Room Set for The Young Girl Who Believes in Luck

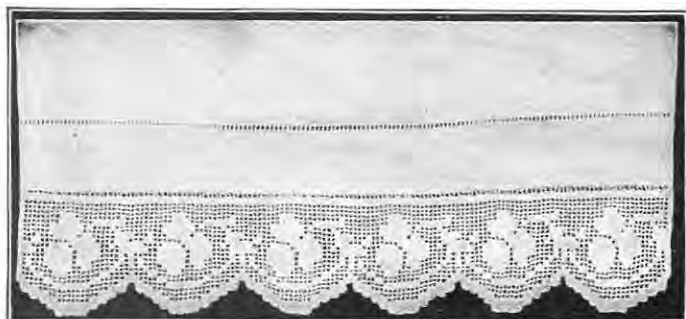


PLATE 71
PILLOW CASE AND SCARF END

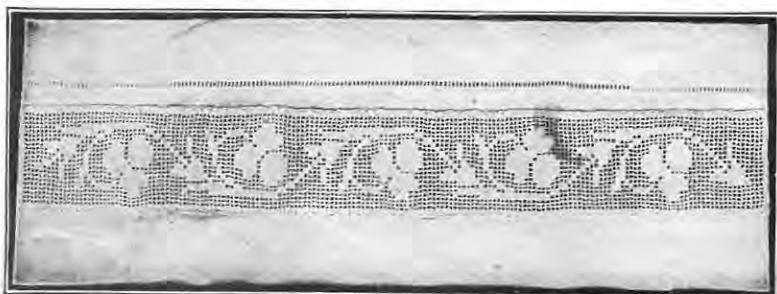


PLATE 72
INSERTION FOR TOWEL, ALSO USEFUL FOR
SHEETS AND CURTAINS

DIRECTIONS FOR CLOVER-LEAF EDGE

Ch 62.
1st Row—19 bl, then follow design, adding
blks at lower edge to form scallop.

DIRECTIONS FOR CLOVER-LEAF INSERTION

MATERIALS—Coats Mercerized Crochet, No.
80.
Ch 72.
1st Row—23 bl.
2d, 3d AND 4TH Rows—1 bl, 21 sp, 1 bl, then
follow design.

DIRECTIONS FOR CLOVER-LEAF PIN CUSHION AND EDGE FOR SAME

MATERIALS—Coats Mercerized Cro-
chet, No. 80.
Ch 182.
1st FOUR Rows—Each 59 sp, then
follow design.

EDGE

Fasten in top of tr.
1st Row—Ch 3, s st in next tr, * ch 1,
tr in 2d sp. Repeat from * 5 times. Ch
3 s st in 2d tr, ch 3, s st in next tr. Repeat
all around.
2d Row—* Ch 2, tr over tr. Repeat
from * 5 times. Ch 2, 1 dc over center
s st. Repeat.
3d Row—* Ch 5, 1 s st in next sp
Repeat from *.



PLATE 73
DRESSER SCARF AND PIN CUSHION

Working Patterns for the Clover-Leaf Set

PARTLY ILLUSTRATED ON PAGE 18.

Plates 75 and 77 are for use as corners and inserts, for pieces to match the Violet Insertion and Edge, Plates 43 and 53, on Pages 12 and 13.

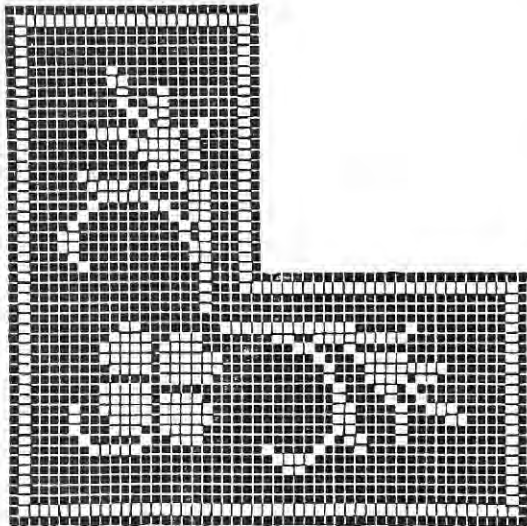


PLATE 74

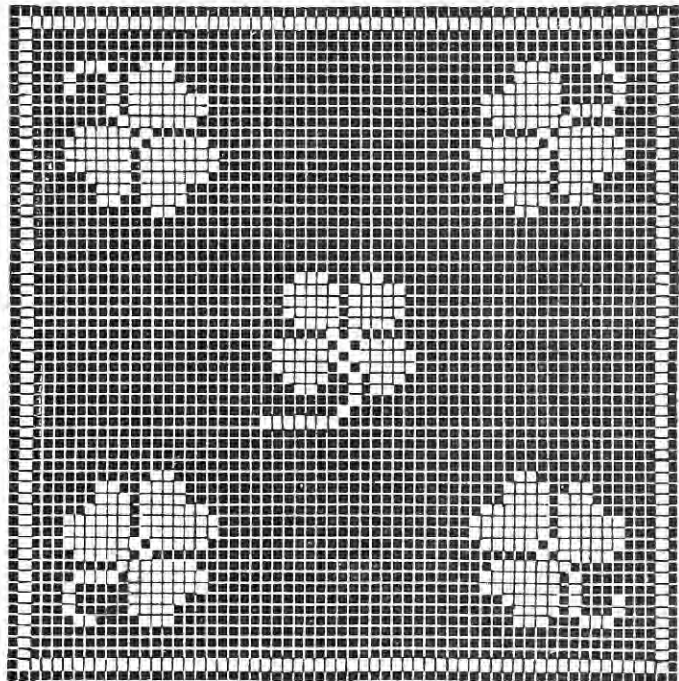


PLATE 75

NOTE—These plates carry a solid mesh edge (instead of open mesh edge, as the finished pieces and directions show) This to suggest to worker that a change can easily be made in their use, if desired.

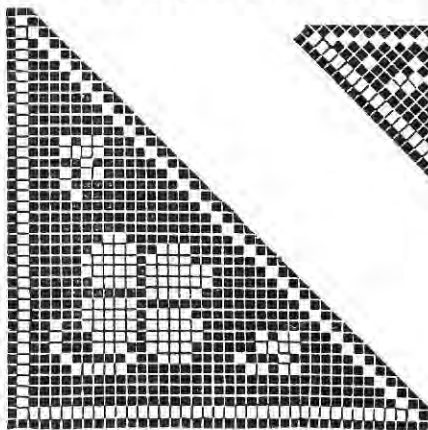


PLATE 76

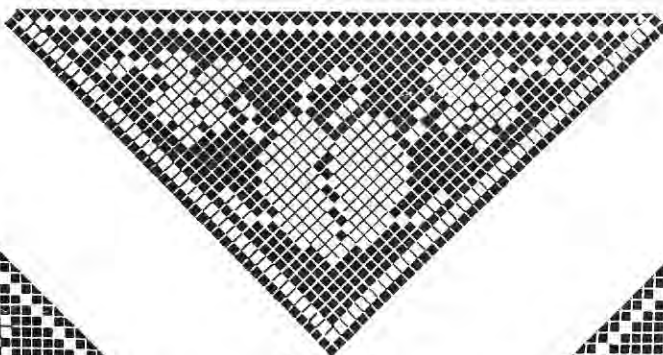


PLATE 77

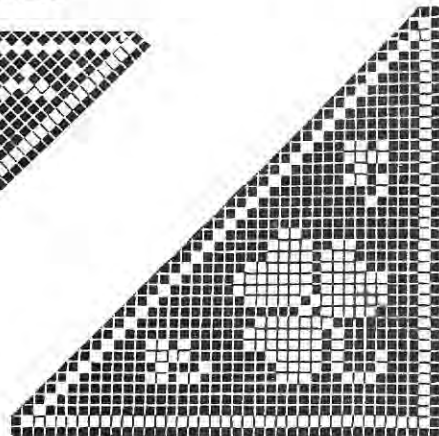


PLATE 78

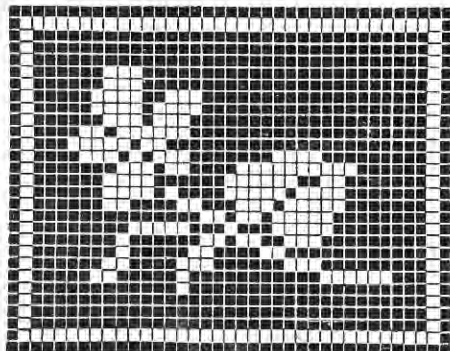


PLATE 79

DIRECTIONS FOR CLOVER LEAF CORNER IN DRESSER-COVER

MATERIALS—Coats Mercerized Crochet, No. 80.

Ch 74.

1ST 4 ROWS—Each 23 sp, then follow design. After the 25th row, add a ch of 80, on which make 25 sp, then complete the design.

EDGE—3 s st in each sp all around

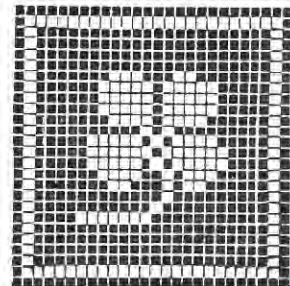


PLATE 80

Camisole Yoke in Carnations

DIRECTIONS AND WORKING PATTERN FOR CARNATION YOKE ON PAGE 8

MATERIALS—Coats Mercerized Crochet, No. 60 No. 13 Hook.

Commence up center of front.

Ch 141.

1ST AND 2D ROWS—46 bl.

3D ROW—1 bl, 44 sp, 1 bl, then follow design.

BEADING AROUND NECK—Ch 8, * 1 d tr in next row, ch 2. Repeat from *.

SCALLOP AROUND NECK—Fasten in 1st sp, 5 tr in same sp. * 1 p. 5 tr in same sp. 1 s st in next sp, 5 tr in next sp. Repeat from *.

SCALLOP AROUND SLEEVE—Same as neck.

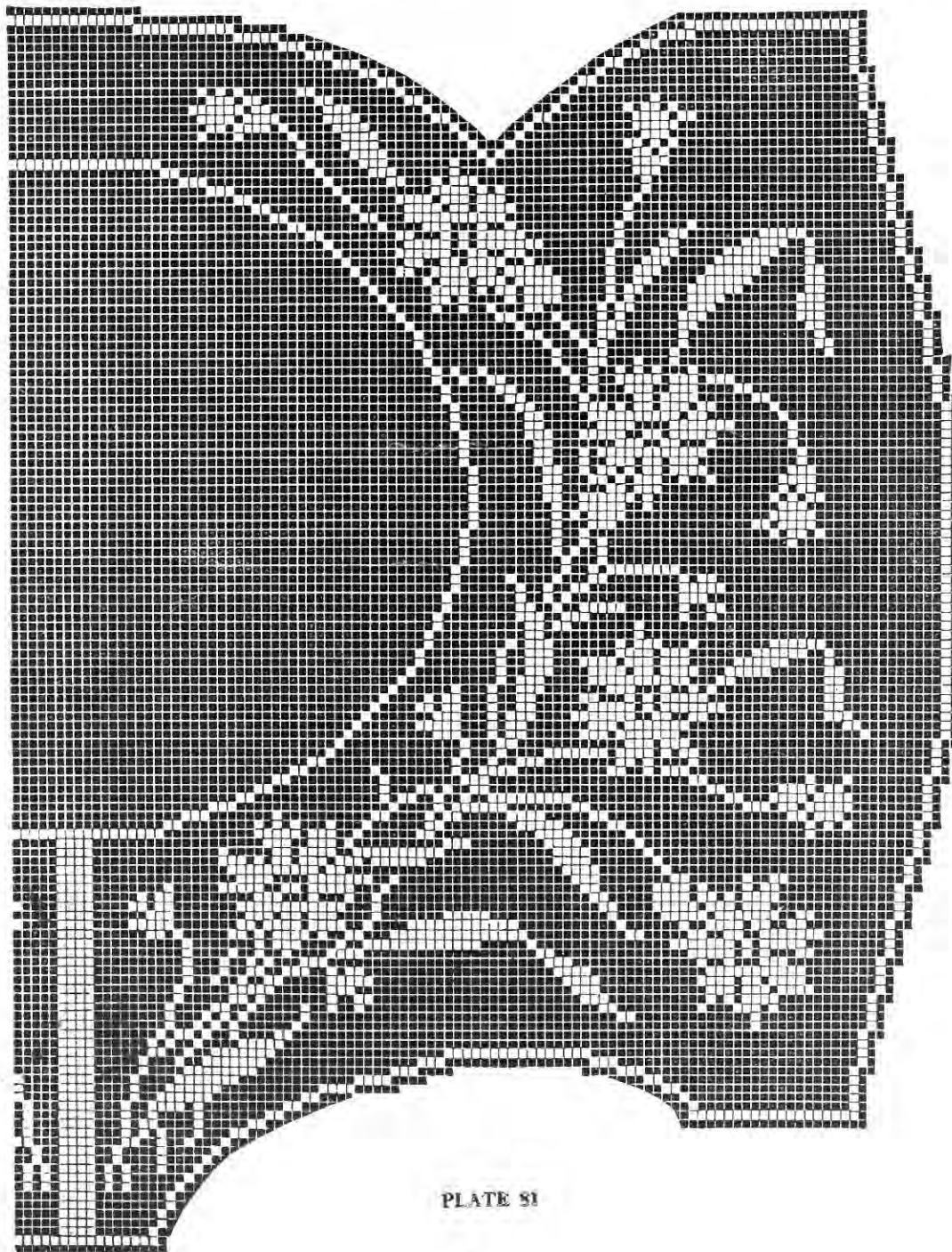


PLATE 81

Camisole-Flag Design

DIRECTIONS FOR FLAG CAMISOLE AND DIRECTIONS FOR EDGE ON SAME ON PAGE 8

MATERIALS—Coats Mercerized Crochet, No. 80.

Ch 963. Join.

1st Row—320 bl around bottom.

2D, 3D, 4TH AND 5TH ROWS—Like 1st row, then begin and follow design, dropping off for neck and arm-hole. Join front shoulder on to back shoulder with beading as follows: 1 tr tr, ch 3. Repeat.

EDGE—* 1 d tr in tr tr, ch 2, repeat 7 times, 1 s st in 2d sp. Repeat from *. Make beading and edge around neck and arm-holes.

NOTE—First 5 rows are solid meshes, though drawing pattern only shows one.

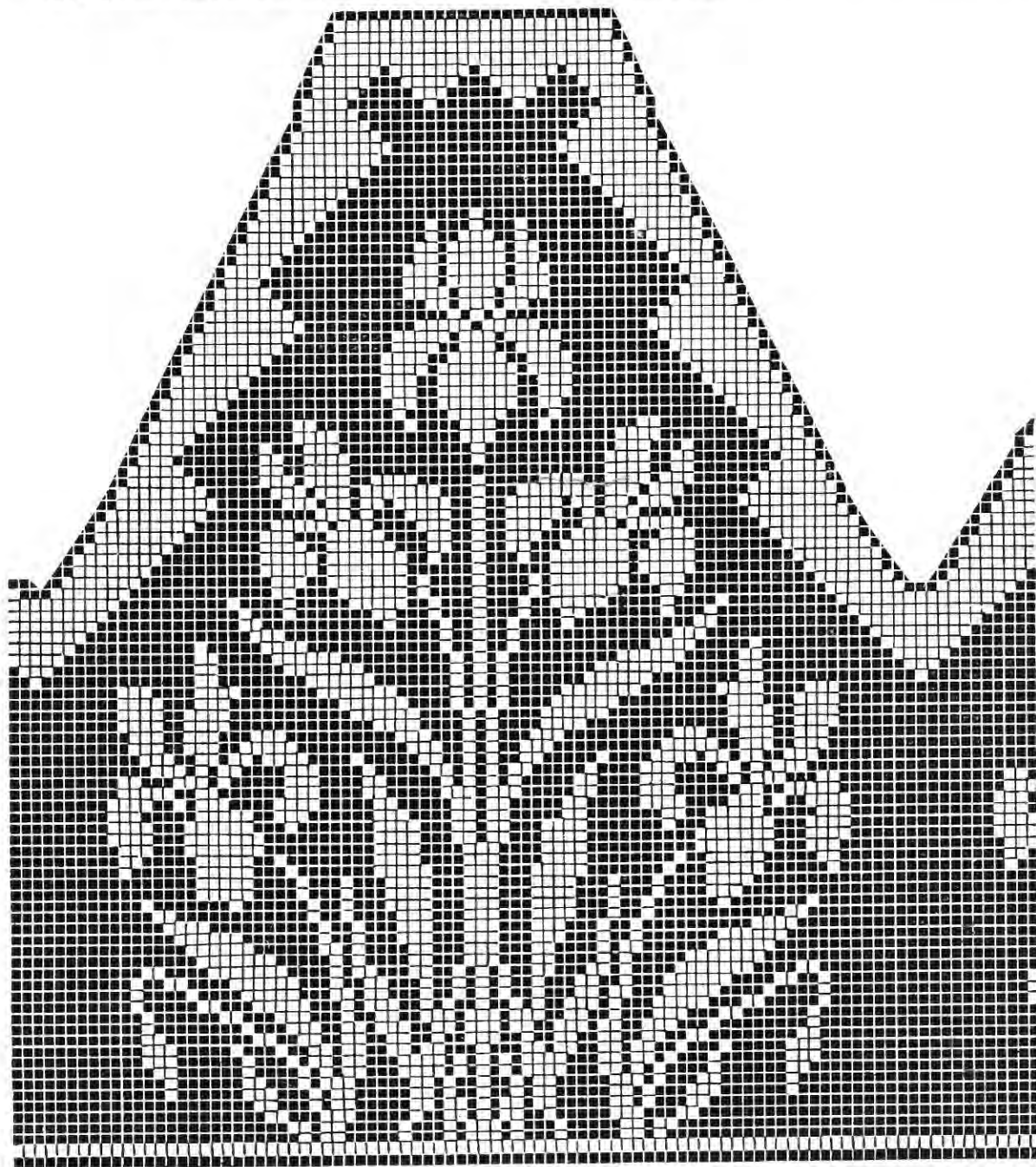


PLATE 82

Working Pattern for Camisole on Page 8

NOTE—The Camisole will be longer waisted if desired like finished model on Page 8, by starting with 5 rows of blks at bottom, instead of with one closed row as shown in drawing

J. & P. COATS COTTONS



SPOOL COTTON

SPOOL COTTON—The standard six-cord thread for hand and machine sewing, unequaled for strength, elasticity and smoothness. "Coats" colors are used extensively on silk as well as on cotton fabrics.

MERCERIZED CROCHET—A cabled or corded cotton of superior quality, excellent lustre and perfect smoothness. The medium sizes are used for general work, laces, etc; the fine sizes for tatting, Irish and other fine crochet, and the coarse sizes for bedspreads, centerpieces fringes and macrame work. It is made in White in sizes 1 to 100, Ecru in sizes 1 to 50, and in a number of popular shades in the most desirable sizes.

"SILK FINISH" CROCHET COTTON—A two-ply, medium-twisted, mercerized cotton of excellent brilliancy and exceptional softness. It is used for all kinds of crochet, embroidery, knitting and smocking. As a substitute for silk in general work it has no equal.

CROCHET COTTON—The standard six-cord cabled crochet, and is used for all kinds of crochet work when a plain finish is desired. The coarse sizes are used for bedspreads, pillow shams, etc.

"SILK FINISH" DARNING COTTON—A loose, twisted stranded cotton, soft and pliable, for darning and mending silk, mercerized and lisle hosiery, undergarments, gloves, etc.

DARNING COTTON—A loose-twisted stranded cotton of exceptional softness. It is the standard cotton for darning and mending hosiery and undergarments.

SIX STRAND FLOSS—A soft, loose-twisted cotton of excellent lustre and superior finish, used for embroidery, knitting, mending and crochet work. The strands may easily be separated, making it suitable for general requirements, and especially for solid, outline, shadow work, cross-stitch, and for mending hosiery and underwear. Made in White only.

LACE THREAD—A fine corded cotton of excellent lustre and superior finish especially adapted for tatting and fine laces.



CROCHET



SIX STRAND FLOSS
Small Balls



SIX STRAND FLOSS
Large Balls



"SILK FINISH"
DARNING



DARNING
30 YARDS



MERCERIZED
CROCHET



"SILK FINISH"
100 YARDS



"SILK FINISH"
50 YARDS



LACE
THREAD



DARNING
45 YARDS

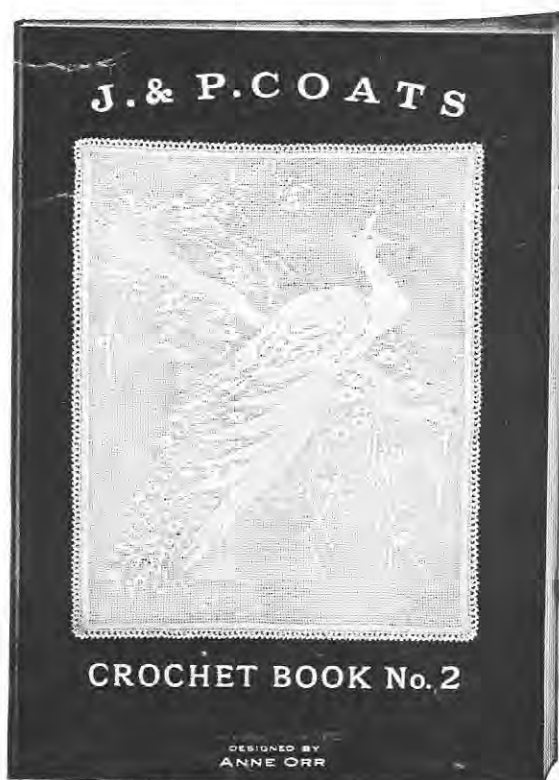
J. & P. COATS PATTERN BOOKS

SIZE OF BOOKS, 7½ X 10½ INCHES, 32 PAGES



In J. & P. Coats Crochet Book of Gown Yokes and Boudoir Caps, the designs are original and unusually attractive, and the majority of them are presented in full page illustrations. A special feature is the brevity and accuracy of the working directions.

J. & P. Coats Crochet Book No. 2 contains more than fifty illustrations, fully describing many beautiful examples of crochet craft. The simplicity of the designs renders them available to the novice, yet interesting to the expert worker.



If you desire to have copies of these books and cannot obtain them from a dealer, write to The Spool Cotton Company, Dept. A, 315 Fourth Avenue, New York.

