

*Old and New*

Creative Commons 4.0 NC SA BY FREE DISTRIBUTION ONLY - BOOK NO. 173  
PRICE 10 CENTS

# FAVORITES

*Crochet Designs*

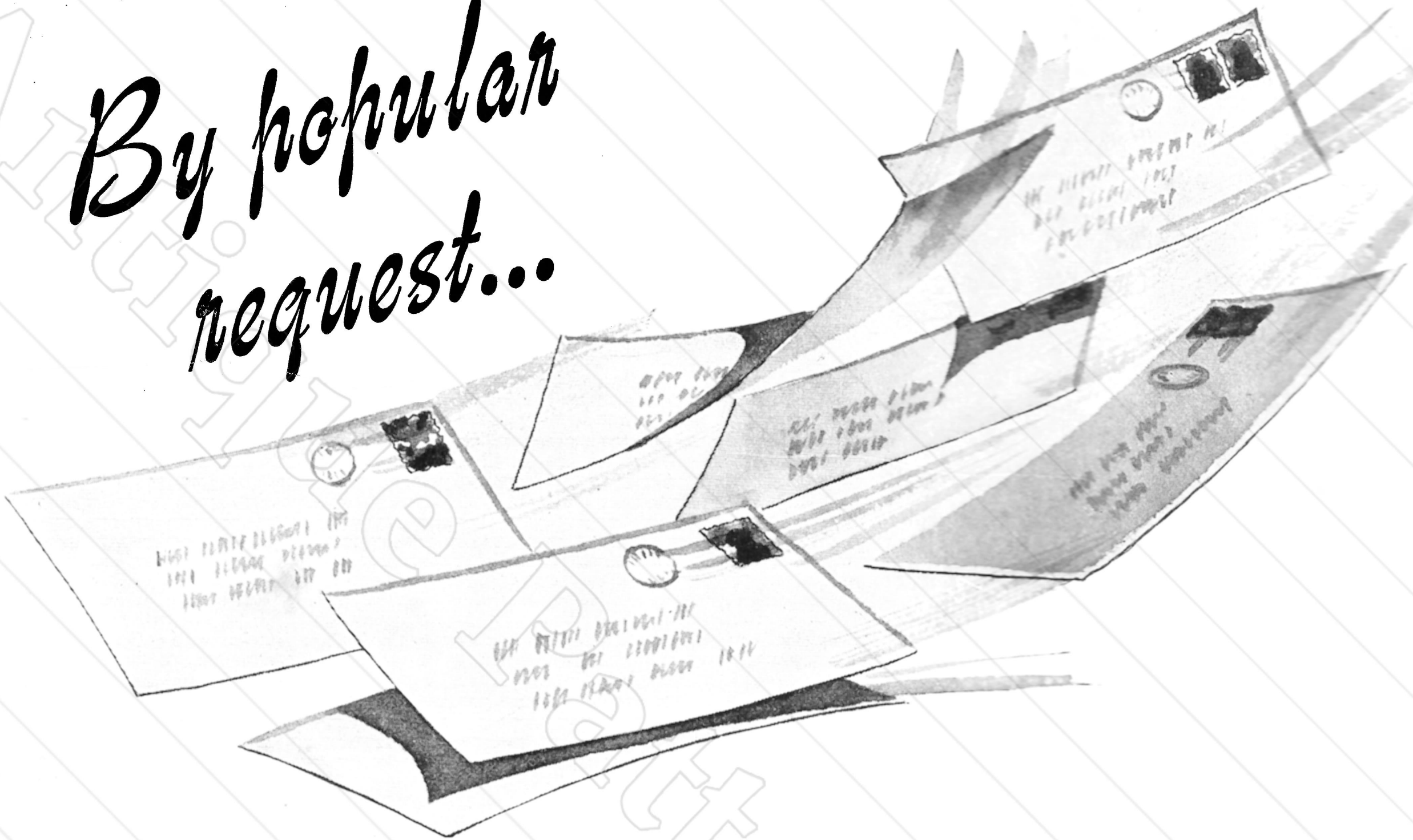
NATION-WIDE FAVORITES  
REPEATED BY REQUEST

for  
TABLECLOTHS • BEDSPREADS  
LUNCHEON SETS  
CHAIR SETS • DOILIES





*By popular  
request...*



From every State in the Union, you have sent us letters asking for these designs. You asked for them, and here they are . . . designs that have made crochet history. Taken from our pattern books published over a period of years, we present your special favorites in this one book.

In these pages you will find *Star Wheel*, *Queen Anne's Lace*, *Wheel of Fortune* . . . lacy motifs, popcorn and filet patterns, cameo crochet . . . designs that have earned a place of honor in the American home.

Give these designs the heirloom quality they deserve. Make them with Clark's O.N.T. and J. & P. Coats Boilfast\* threads . . . the threads that have a century-old reputation for beauty.

SEE THREAD CHART ON PAGE 22

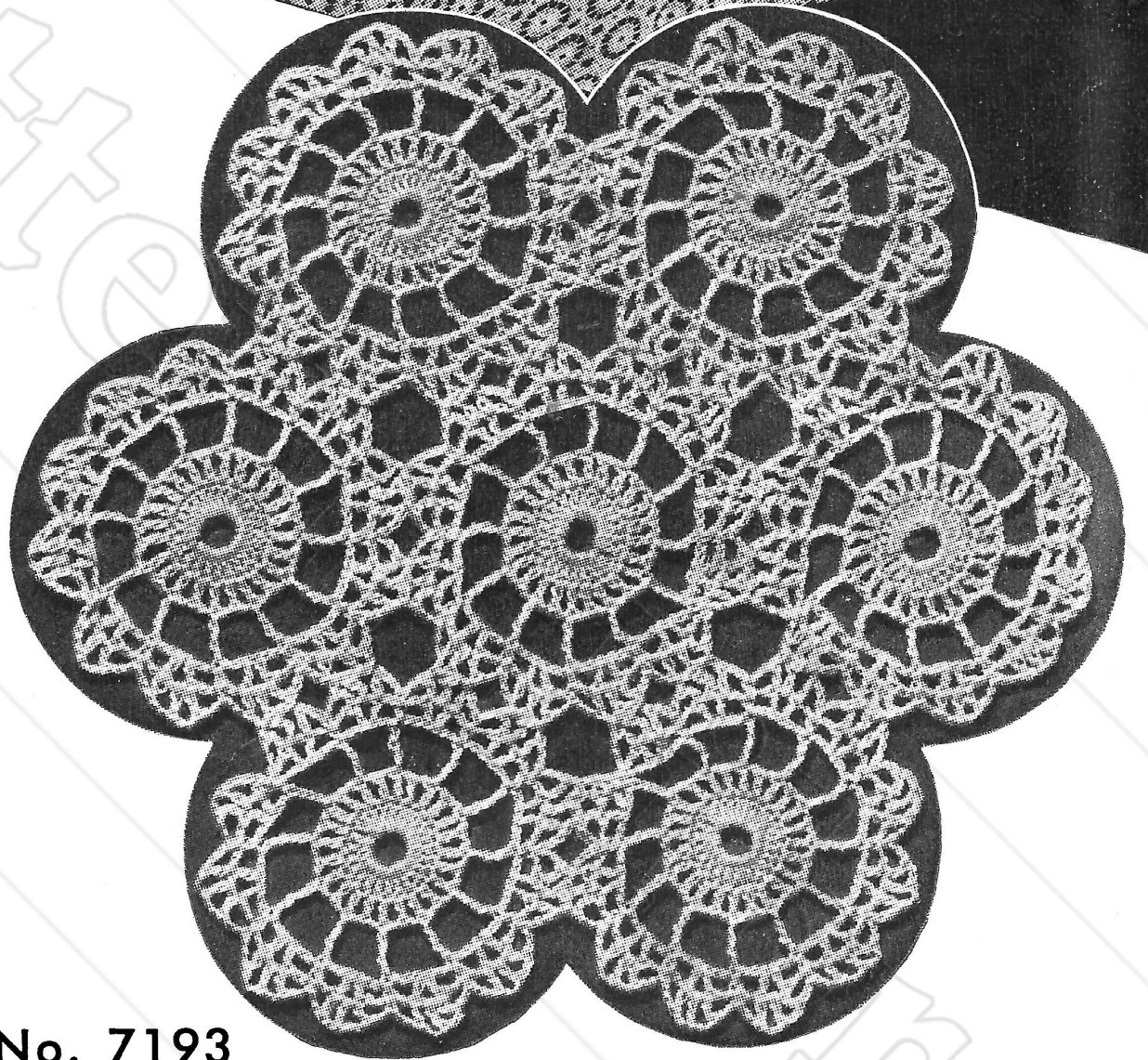
\* Trade Mark





## Versatile...

A tiny motif of jewel-like beauty combines enchantingly to look like the first bright snowfall. Excellent for luncheon sets, tablecloths, or chair sets. Try a coarser thread for a heavier texture.



### SNOWDRIFT No. 7193

#### MATERIALS:

CLARK'S O.N.T. or J. & P. COATS BEST SIX CORD MERCERIZED CROCHET, size 50. See thread information on page 22.

Milward's Steel Crochet Hook No. 12 or 13.

**GAUGE:** Using the materials recommended, each motif measures  $1\frac{3}{4}$ " in diameter and requires about  $6\frac{1}{2}$  yds. of thread.

**RECOMMENDED USES:** Tablecloths, bedspreads, luncheon sets, vanity sets, scarfs, chair sets, centerpieces.

**MOTIF . . .** Ch 10, join with sl st. **1st rnd:** Ch 3, 23 dc in ring. Join to 3rd st of ch-3. **2nd rnd:** Ch 4, \* dc in next dc, ch 1. Repeat from \* around. Join last ch-1 to 3rd st of ch-4. **3rd rnd:** Sl st in

next sp. Ch 10, \* skip 1 sp, tr in next sp, ch 6. Repeat from \* around. Join last ch-6 to 4th st of ch-10. **4th rnd:** \* Ch 2, skip 2 ch, dc in next ch, ch 2, dc in next ch, ch 2, sc in next tr. Repeat from \* around; join. **5th rnd:** \* Ch 2, dc in next dc, ch 2, dc in ch-2 sp, ch 2, dc in next dc, ch 2, sc in next sc. Repeat from \* around. Fasten off.

Make another motif to 4th rnd incl. **5th rnd:** Ch 2, dc in next dc, \* ch 1, sl st in corresponding sp on 1st motif, ch 1, dc in next sp on 2nd motif, ch 1, sl st in next sp on 1st motif, ch 1, dc in next dc on 2nd motif, ch 2, sc in next sc, ch 2, dc in next dc. Repeat from \* once more; complete rnd as for 1st motif.

Join adjacent sides of all motifs in this manner.



## OLD AND NEW FAVORITES TO CROCHET

## Popcorn Variation

## MAGNOLIA No. 6020

## MATERIALS:

J. & P. COATS KNIT-CRO-SHEEN.  
See thread information on page 22.

Milward's Steel Crochet Hook No. 7.

**GAUGE:** Using the materials recommended, each motif measures about 6" in diameter before joining, and requires about 50 yds. of thread. Fill-in requires about 7½ yds. Allow an extra ball for edging.

**RECOMMENDED USE:** Bedspreads.

**FIRST MOTIF . . .** Starting at center, ch 6, join with sl st. **1st rnd:** Ch 4 (to count as tr), 15 tr in ring. Join with sl st to 4th st of ch-4. **2nd rnd:** Ch 7, \* tr in next tr, ch 3. Repeat from \* around; join to 4th st of ch-7. **3rd rnd:** Ch 4, \* in next sp make a pc st—to make pc st, ch 1, make 5 tr in sp, drop loop from hook, insert hook in ch-1 preceding 5 tr and draw dropped loop through. Then make a tr and pc st in same sp. Make tr in next tr, ch 3, tr in next tr. Repeat from \* around. Join last ch-3 to 4th st of ch-4. **4th rnd:** Ch 4, pc st in same place as sl st, \* tr in next pc st, pc st in next tr, tr in next pc st; in next tr make a pc st and a tr. Ch 4, in next tr make a tr and a pc st. Repeat from \* around; join last ch-4 to 4th st of ch-4 first made. **5th rnd:** Sl st in tip of next

pc st, ch 4; \* (pc st in next tr, tr in next pc st) twice; ch 4, skip next tr, 5 tr in next ch-4 sp, ch 4, skip next tr, tr in next pc st. Repeat from \* around; join. **6th rnd:** Sl st in tip of next pc st, ch 4, tr in next tr and in tip of next pc st, holding back the last loop of each tr on hook; thread over and draw through all loops on hook (a cluster). \* Ch 5, skip next tr and sp, make 2 tr in next tr, tr in next 3 tr, 2 tr in next tr; ch 5, skip next sp and 1 tr; make tr in next 3 sts, holding back the last loop of each tr on hook; thread over and draw through all loops on hook (another cluster). Repeat from \* around; join. **7th rnd:** \* Ch 11, skip next sp and 1 tr; tr in next 5 tr, holding back the last loop of each tr on hook and complete a cluster as before. Ch 11, sc in tip of next cluster. Repeat from \* around. Join and fasten off. This completes one motif.

**SECOND MOTIF . . .** Work 1st 6 rnds as for first motif. **7th rnd:** Ch 11, skip 1 sp and 1 tr, tr in next 5 tr, holding back the last loop of each tr on hook and complete a cluster as before. Ch 5, sl st in corresponding ch-11 loop on 1st motif (always keeping right side of work on top); ch 5, sc in tip of next cluster on 2nd motif. Ch 5, sl st in next ch-11 loop on 1st motif; ch 5, skip next sp and tr; make a 5-tr cluster on 2nd motif as before, and complete rnd as for 1st motif. Fasten off.

Make necessary number of motifs, join-

ing as 2nd motif was joined to 1st, leaving 2 ch-11 loops free between joinings.

**FILL-IN MOTIF . . . 1st rnd:** Starting at center, ch 8, make tr in 8th ch from hook; (ch 4, tr in same place as last tr was made) twice; ch 4, sl st in 4th st of ch-8 first made. **2nd rnd:** Ch 4 (to count as tr), \* in next sp make pc st, tr and another pc st; in next tr make tr, ch 6 and tr. Repeat from \* around, joining last ch-6 to 4th st of ch-4 first made. **3rd rnd:** Ch 4, tr in each of next 4 sts, holding back the last loop of each tr on hook; thread over and draw through all loops on hook (a cluster). Ch 5, sl st in a free ch-11 loop (of a large motif) between joinings, \* ch 5, sc in next ch-6 loop of fill-in motif, ch 5, sl st in next free ch-11 loop on large motif, ch 5, tr in each of next 5 sts of fill-in motif, holding back the last loop of each tr on hook, and complete a cluster. Ch 5, sl st in next free ch-11 loop. Repeat from \* around, joining last ch-5 with sl st to tip of 1st cluster made. Fasten off. Fill in all spaces between joinings in this manner.

**EDGING . . .** Attach thread to a joining point between any 2 motifs and work along entire outer edge as follows: Make 7 sc in 1st loop of next motif; in each of next 6 loops of same motif (10 loops of corner motifs) make: 1 sc, 1 half dc, 5 dc, 4 tr, 5 dc, 1 half dc and 1 sc. Make 7 sc in next loop (preceding next joining), 7 sc in 1st loop of next motif, and continue thus around. Fasten off.

## QUEEN ANNE'S LACE

No. 7050

## MATERIALS:

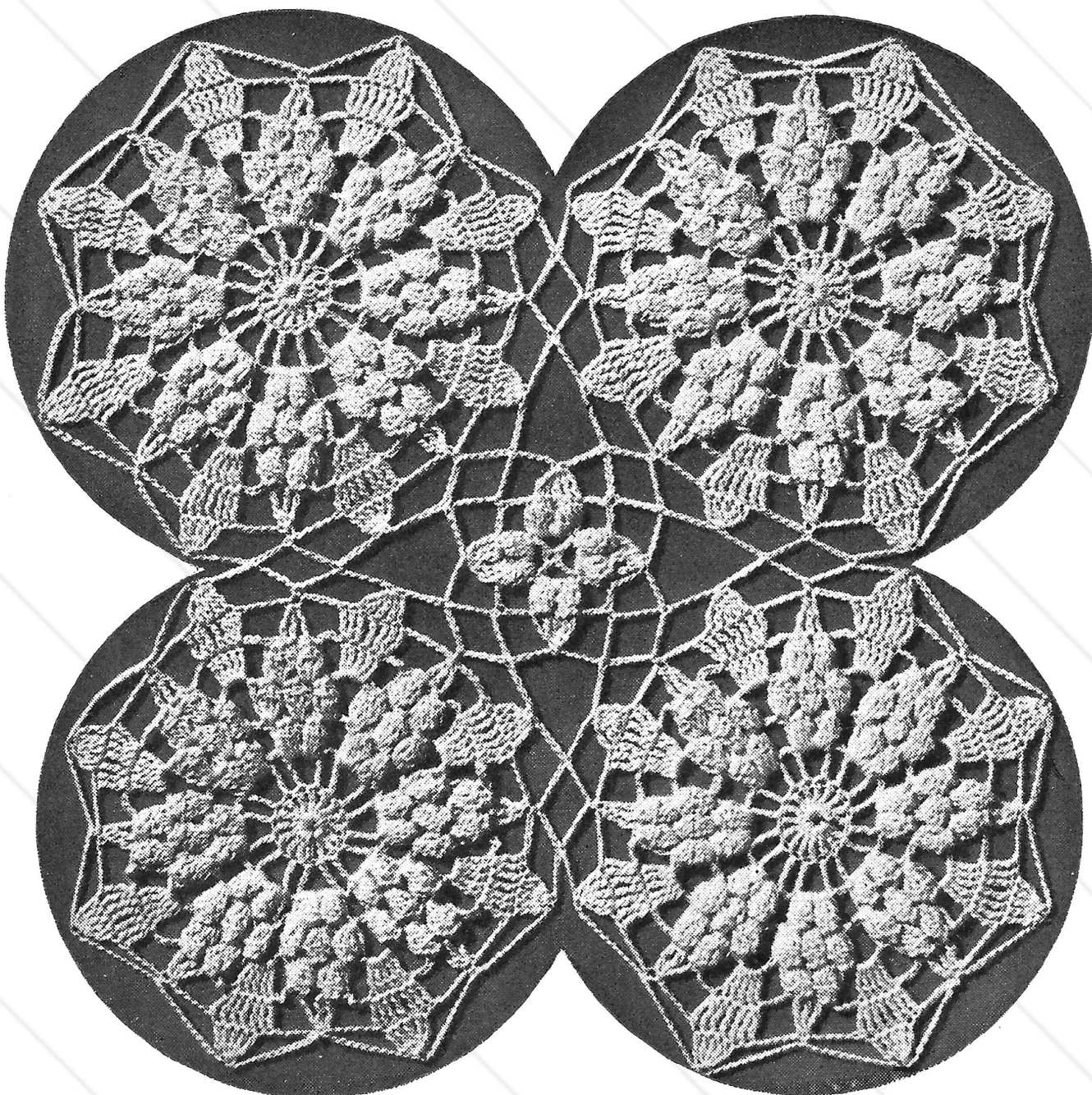
CLARK'S BIG BALL MERCERIZED CROCHET, size 20. See thread information on page 22.

Milward's Steel Crochet Hook No. 8.

**GAUGE:** Using the materials recommended, each motif measures 4¾" in diameter and requires about 24 yds. of thread. Fill-in motif requires about 5 yds.

**RECOMMENDED USES:** Tablecloths, bedspreads, runners.

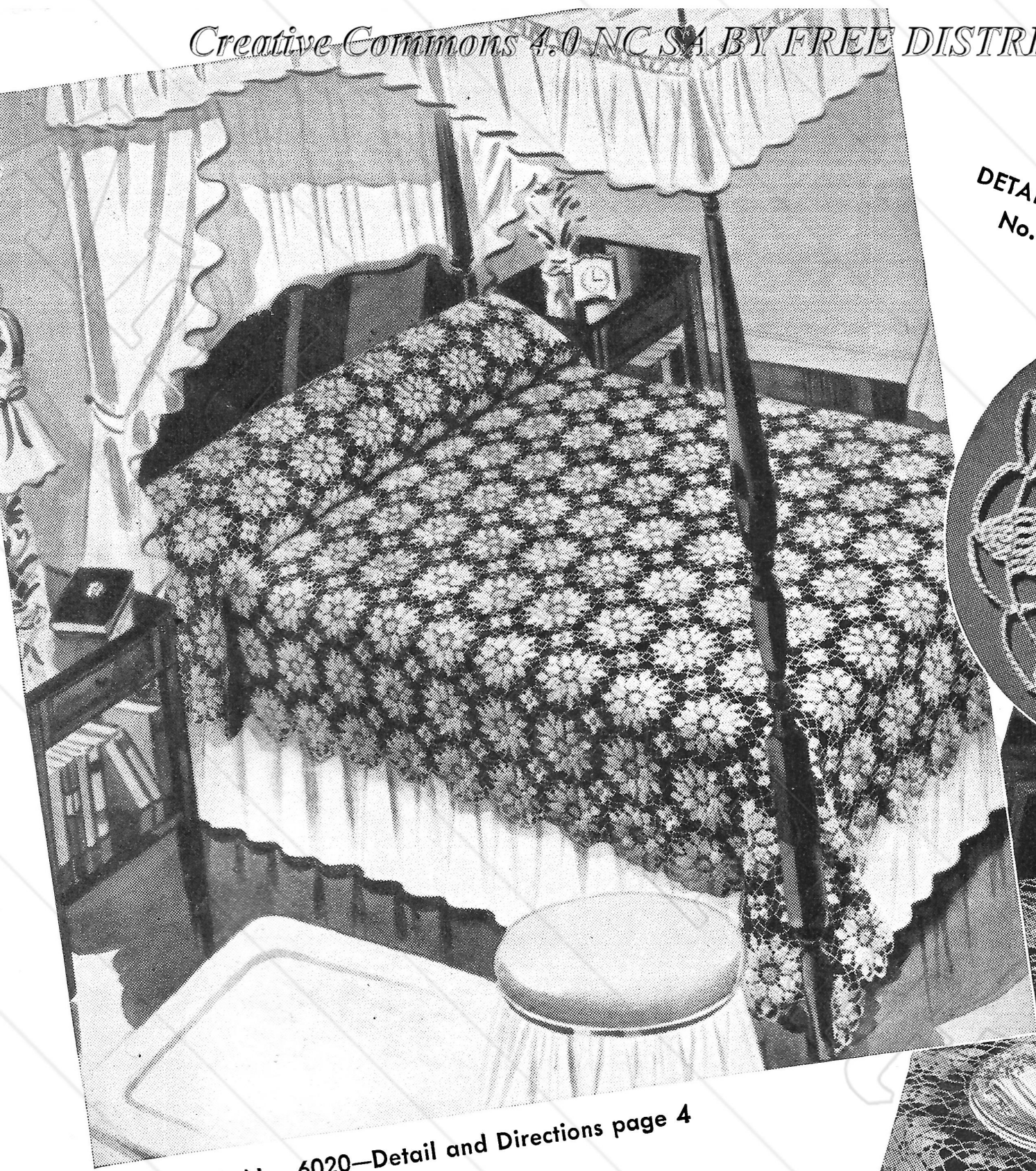
**FIRST MOTIF . . .** Ch 6, join with sl st. **1st rnd:** Ch 6, \* tr in ring, ch 2. Repeat from \* 6 more times, join to 4th st of ch-6 (8 sps). **2nd rnd:** Ch 4, 4 tr in 1st sp, \* ch 2, 5 tr in next sp. Repeat from \* around. Join last ch-2 to 4th st of ch-4. **3rd rnd:** Ch 4, tr in same place as sl st, tr in next 4 tr, \* tr in 1st ch of



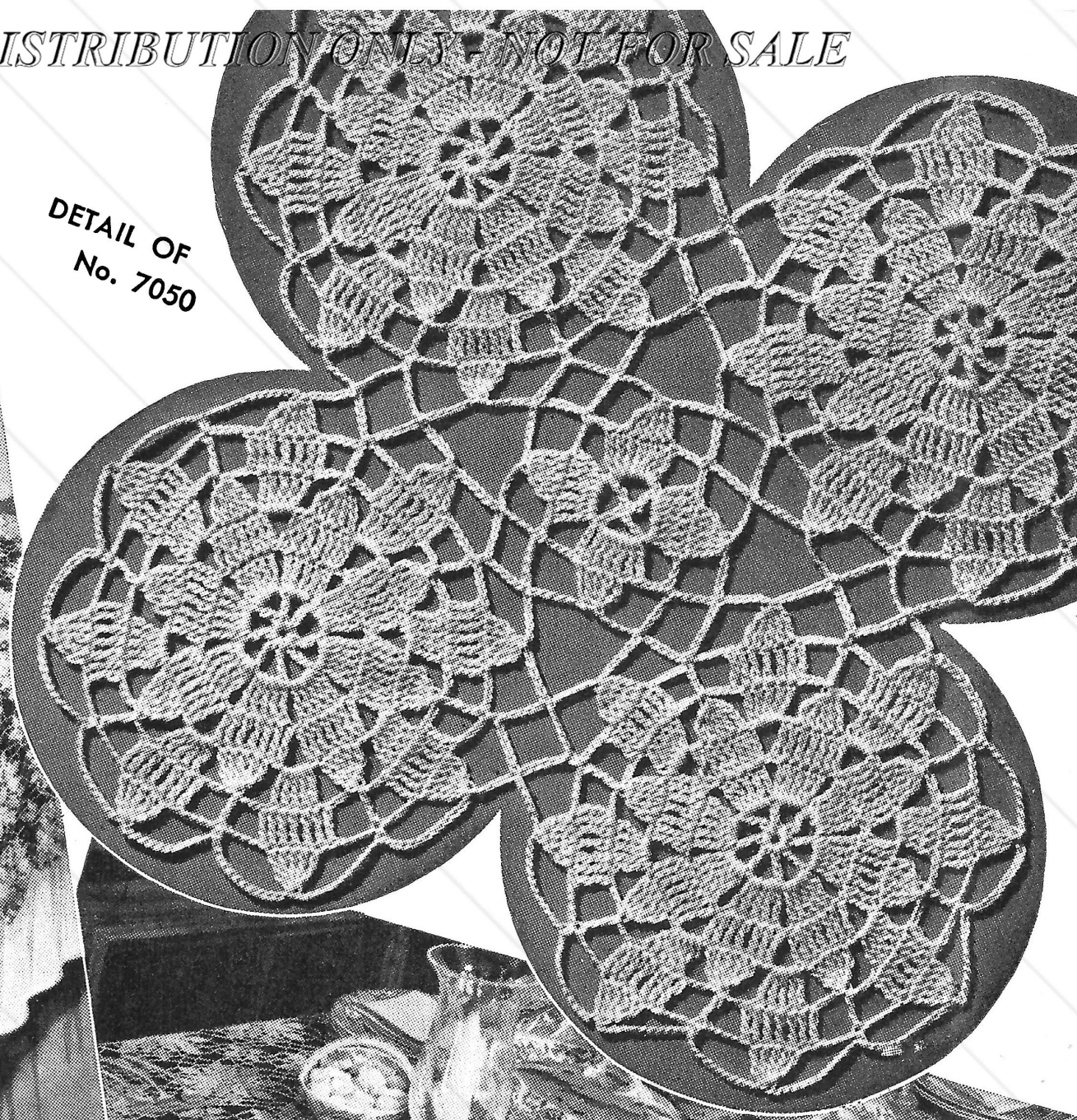
DETAIL OF  
No. 6020

DIRECTIONS  
ABOVE





MAGNOLIA No. 6020—Detail and Directions page 4

DETAIL OF  
No. 7050

QUEEN ANNE'S LACE No. 7050

## Queen Anne's Lace...

This lovely motif has made crochet history. Its gossamer patterning has a rare beauty that holds enchantment, whether in plain double crochet or in the popcorn stitch variation, "Magnolia."

ch-2, ch 3, tr in next ch of same ch-2, tr in next 5 tr. Repeat from \* around. Join last ch-3 to 4th st of ch-4; sl st in 1st tr of group. **4th rnd:** Ch 4; make tr in next 4 tr, working off together as for a cluster; \* ch 4, 5 tr in next ch-3 sp, ch 4, skip 1st tr of next group; make tr in next 5 tr, working off together as for a cluster. Repeat from \* around. Join last ch-4 to tip of first cluster. **5th rnd:** Ch 8, \* skip 1st 3 ch of ch-4, tr in next ch, tr in next 5 tr, tr in 1st ch of next ch-4, ch 4, tr in tip of cluster, ch 4. Repeat from \* around. Join to 4th st of ch-8. **6th rnd:** \* Ch 12, skip 1st tr of next group, tr in next 5 tr, working off together as for a cluster; ch 12, sc in the single tr between groups. Repeat from \* around. Join last ch-12 to base of first ch-12 (16 loops). Break off.

**SECOND MOTIF . . .** Work 1st 5 rnds as for 1st motif. **6th rnd:** Ch 12, skip 1st tr of next group; tr in next 5 tr, working off together as for a cluster; ch 6, sl st in 1st ch-12 loop on 1st motif (always keep right side of work on top), ch 6, sc in next single tr on 2nd motif, ch 6, sl st in next ch-12 loop on 1st motif, ch 6, make a cluster back on 2nd motif. Complete this rnd as for 1st motif (no more joinings).

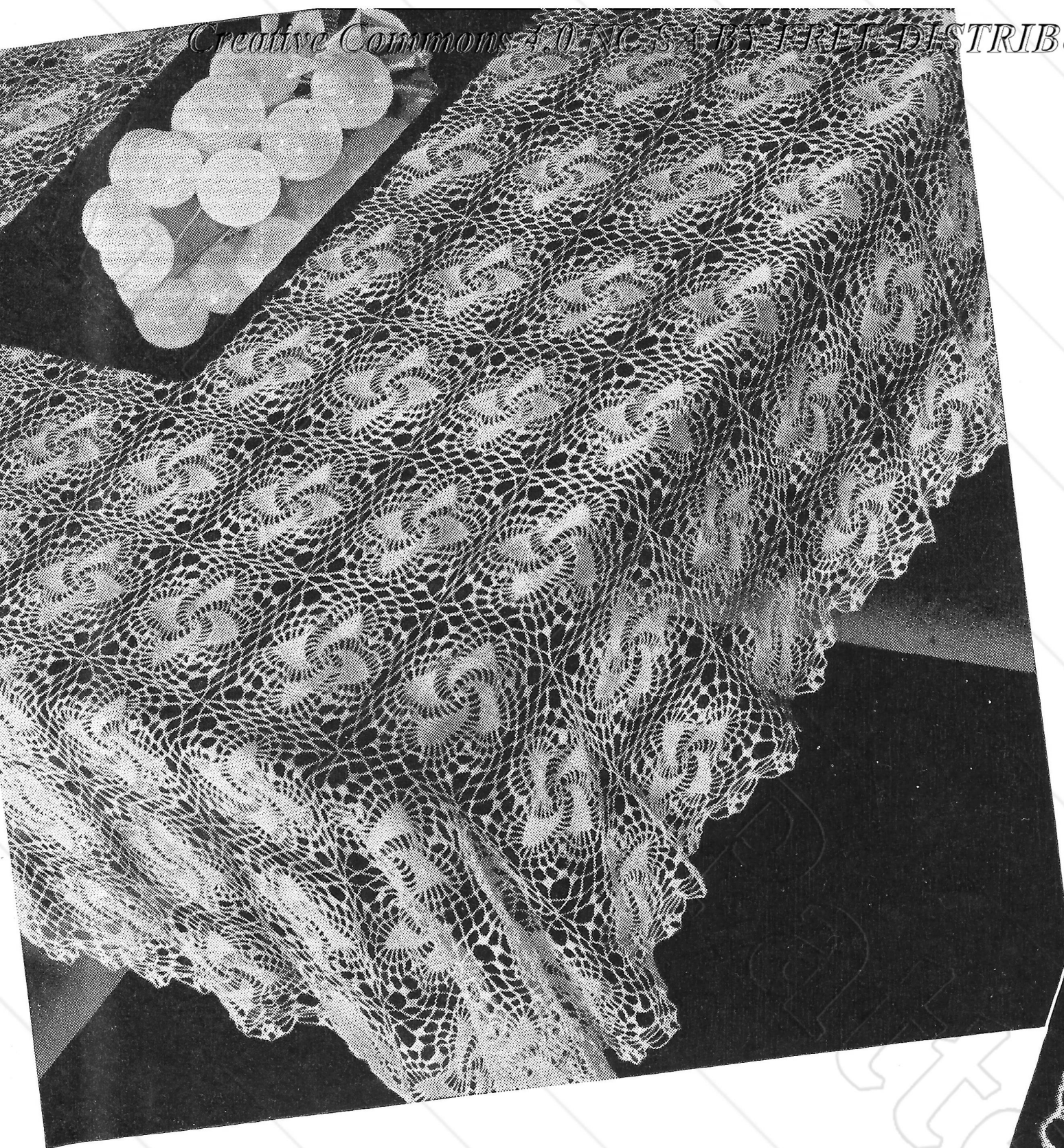
Join 2 ch-loops of all adjacent sides in this manner, thus leaving 2 loops free between joinings, for fill-in motifs to be made later.

**FILL-IN MOTIF . . . 1st rnd:** Ch 8, tr in 8th ch from hook, ch 4, tr in same place, ch 4, tr in same place, ch 4, join to 4th ch of ch-8 (4 sps). **2nd rnd:**

Ch 4, 6 tr in 1st sp, \* ch 5, 7 tr in next sp. Repeat from \* around, ch 5, join to 4th st of ch-4; sl st in 1st tr. **3rd rnd:** Ch 4; make tr in next 4 tr, working off together as for a cluster; ch 5, join to 1st ch-12 loop of a large motif (as large motifs were joined), \* ch 5, sc in next ch-5 loop back on fill-in motif, ch 5, join to 2nd ch-12 loop of same large motif, ch 5, work a 5-tr cluster back on fill-in motif, ch 5, join to 1st ch-12 loop of next large motif. Repeat from \* around. Fasten off.

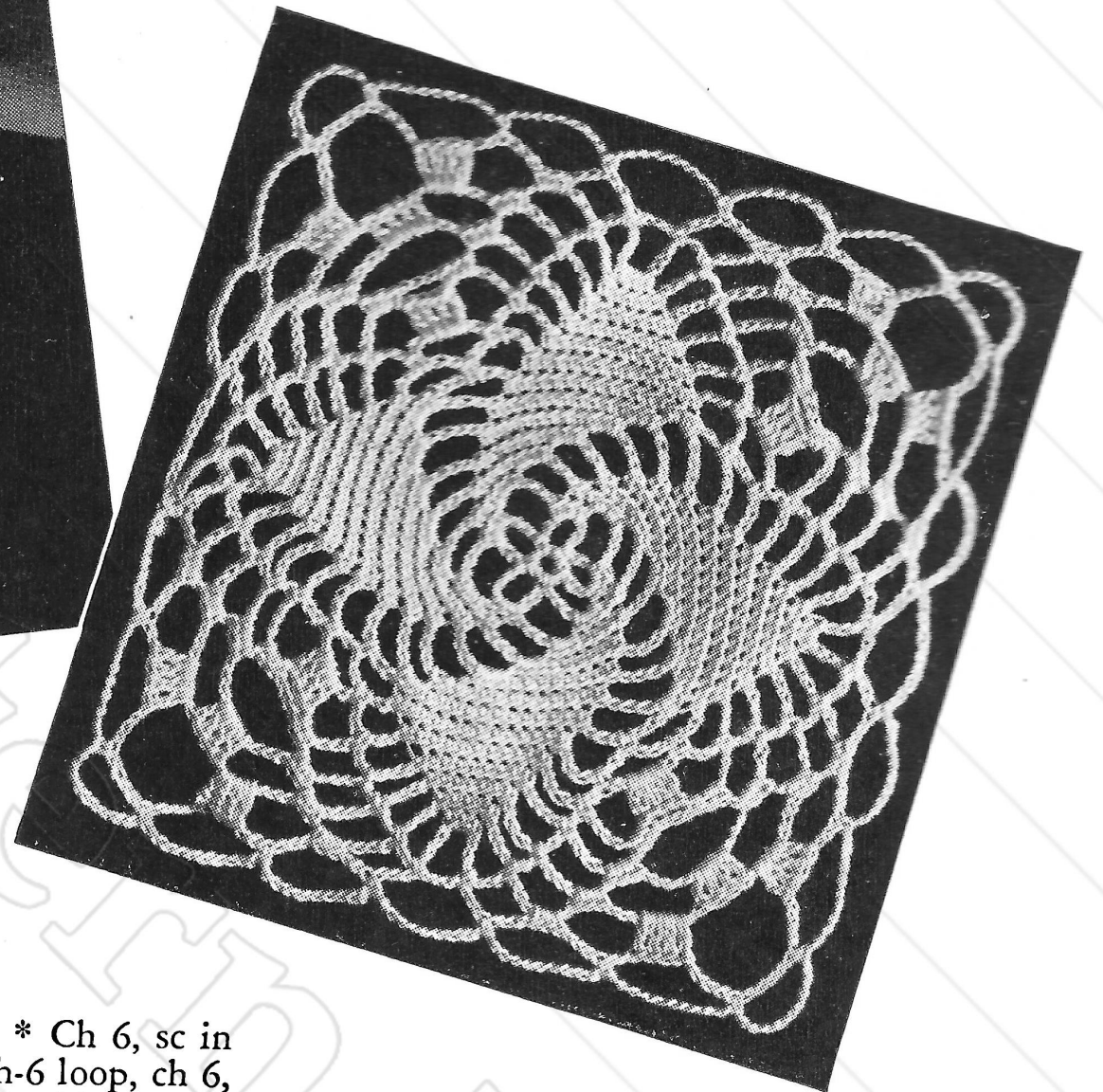
**EDGING . . .** Attach thread to joining point between any 2 large motifs. \* 7 sc in 1st loop of next motif; in each remaining loop of same motif make sc, half dc, 5 dc, 4 tr, 5 dc, half dc, sc; 7 sc in last loop. Repeat from \* all around.





# Pinwheels

Two lovely versions of the traditional pinwheel design. The lacy backgrounds have an air of graciousness in fine or heavier threads.



## COLONY CLUB No. 7015

### MATERIALS:

CLARK'S O.N.T. or J. & P. COATS BEST SIX CORD MERCERIZED CROCHET, size 30. See thread information on page 22.

Milward's Steel Crochet Hook No. 9.

**GAUGE:** Using the materials recommended, each motif measures 4" square. About 26 yds. are required for 1 motif. About 4 small balls or 2 large balls are required for tablecloth or bedspread edging.

**RECOMMENDED USES:** Tablecloths, bedspreads, runners.

**MOTIF . . .** Ch 6, join with sl st to form ring. **1st rnd:** \* Ch 7, sc in ring. Repeat from \* 3 more times. **2nd rnd:** \* Ch 6, 3 sc in next loop. Repeat from \* 3 more times. **3rd rnd:** Ch 6, 3 sc in 1st ch-6 loop of previous rnd and 1 sc in each of next 2 sc, picking up only the back loop of sc throughout motif; ch 6, 3 sc in next ch-6 loop and 1 sc in back loop of each of the 2 sc. Continue in this manner, making ch-6 between groups, 3 sc over the ch-loop and sc in each sc except the last sc of each group, until the 8th rnd is completed (15 sc in each group). **9th rnd:** \* Ch 6, sc in ch-6 of previous rnd, ch 6, skip 1st sc of group, 1 sc in each of next 13 sc, picking up back loops only, and repeat from \* around. **10th rnd:** \* Ch 6, sc in 1st ch-6 loop of previous rnd, ch 6, sc in next loop, ch 6, skip 1st sc of group, sc in each sc to within last sc of same group. Repeat

from \* around. **11th rnd:** \* Ch 6, sc in ch-6, ch 6, 4 dc in center ch-6 loop, ch 6, sc in next ch-6 loop, ch 6, skip 1st sc, sc in each sc to within the last sc. Repeat from \* around. **12th rnd:** \* Ch 6, sc in loop, ch 6, 3 sc in loop, ch 3, skip 4-dc group, 3 sc in next loop, ch 6, sc in next loop, ch 6, skip 1st sc and make sc in each of next sc, omitting the last sc. Repeat from \* around. **13th rnd:** \* Ch 6, sc in loop, ch 6, 3 sc in next loop, ch 10, skip the 3 sc, the ch-3 and the 3 sc, then make 3 sc in next loop, ch 6, sc in next loop, ch 6, skip 1st sc, sc in each of next sc, omitting last sc in group. Repeat from \* around. **14th rnd:** \* Ch 6, sc in next loop, ch 6, 3 sc in next loop, ch 6, 4 dc in ch-10 loop, ch 6, 3 sc in next loop, ch 6, sc in next loop, ch 6, skip 1st sc, sc in each of next 3 sc. Repeat from \* around. **15th rnd:** Ch 6, sc in next loop, \* ch 6, 3 sc in next loop, ch 6, 4 dc in next loop, ch 14, 4 dc in next loop, ch 6, 3 sc in next loop, ch 6, sc in next loop, ch 3, sc in next loop. Repeat from \* around. **16th rnd:** Ch 5, sc in next loop, ch 10, sc in next loop, ch 10, sc in 5th st of corner loop, ch 10, sc in 10th st of same corner loop. Continue thus, making ch-10 loops all around, skipping the ch-3 at tip of sections and making corners as before. Join last ch-10 with sl st to sc following 1st ch-5 in this rnd. Fasten off.

**SECOND MOTIF . . .** Work as for 1st motif to 15th rnd incl. **16th rnd:** Ch 5, sc in next loop, ch 10, sc in next loop, ch 10, sc in 5th st of corner loop, ch 5, sc in corner loop of 1st motif, ch 5, skip

4 ch on motif in work, sc in next ch, ch 5, sc in corresponding loop of 1st motif, ch 5, sc in next loop on motif in work and continue thus, joining the following 5 loops as before.

Join all motifs in this manner (where 4 corners meet, join the last 2 corners to joining of 2 previous corners).

**EDGING . . . 1st row:** Holding right side of work toward you, attach thread to the center st of any corner loop, ch 7, dc in same place, ch 5, \* sc in next sc, ch 8, dc in next sc, ch 6, dc in same sc, ch 8. Repeat from \* across this side of piece to within last motif, skipping all joinings of motifs. Now work into joining of last 2 motifs, treating joining as an sc and continue to within corner loop of piece, ch 5, in center st of corner loop make dc, ch 4 and dc; ch 5, sc in next sc. Ch 8, and continue thus around piece, ending with ch 5, sl st to 3rd st of ch-7 first made. **2nd row:** Ch 7, 4 dc in loop, ch 3, dc in same loop, ch 6, \* 2 sc in next sc, ch 8, dc in next ch-6 loop, ch 3, 4 dc in same loop, ch 3, dc in same loop, ch 8. Repeat from \* all around, ending row with ch 6, sl st in 3rd st of ch-7 loop first made. **3rd row:** Sl st in loop, ch 3, 3 dc in same loop, \* ch 5, skip 4-dc group, 4 dc in next loop, ch 9, sc in next sc, ch 9, 4 dc in loop just before next 4-dc group. Repeat from \* all around, ending row with ch 9, sl st to 3rd st of ch-3 first made.



# OLD AND NEW FAVORITES TO CROCHET

## Classic Design

### PINWHEEL No. 7064

#### MATERIALS:

CLARK'S O.N.T. or J. & P. COATS BEST SIX CORD MERCERIZED CROCHET, size 50. See thread information on page 22.

Milward's Steel Crochet Hook No. 12.

**GAUGE:** Using the materials recommended, each motif measures  $3\frac{1}{2}$ " square and requires approximately 24 yds. of thread.

**RECOMMENDED USES:** Tablecloths, bedspreads, luncheon sets, runners, centerpieces, chair sets.

**FIRST MOTIF . . .** Starting at center, ch 8, join with sl st. **1st rnd:** 16 sc in ring. **2nd rnd:** Ch 4, \* dc in next sc, ch 1. Repeat from \* around. Join to 3rd st of ch-4 (16 sps). **3rd rnd:** Ch 3, dc in same place as sl st, \* ch 5, skip next dc, 2 dc in next dc. Repeat from \* around; join last ch-5 to 3rd st of ch-3 (8 groups of 2 dc). **4th rnd:** Sl st in next dc, ch 3, \* 2 dc in next loop, ch 6, skip 1st dc of next 2-dc group, dc in next dc of same group. Repeat from \* around. Join last ch-6 to 3rd st of ch-3. **5th rnd:** Sl st in next dc, ch 3, dc in next dc, 2 dc in next loop, \* ch 7, skip 1st dc of next group, dc in next 2 dc of same group, 2 dc in next loop. Repeat from \* around. Join as before. **6th rnd:** Sl st in next dc, ch 3, dc in next 2 dc, 2 dc in next loop. \* Ch 8, skip 1st dc of next group, dc in next 3 dc of same group, 2 dc in next loop. Repeat from \* around; join as before. **7th, 8th and 9th rnds:** Continue in this manner, always

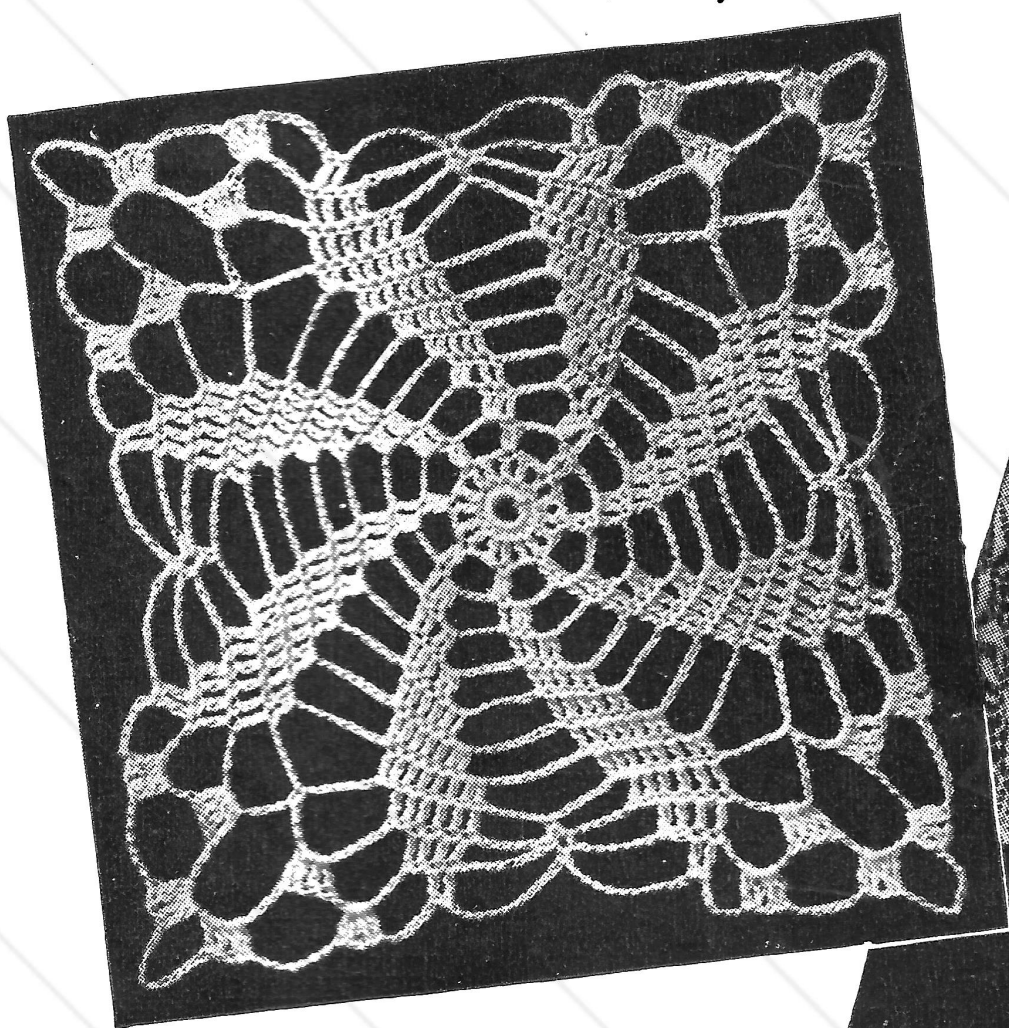
skipping the 1st dc of each group and making 2 increases in each group; also, on 7th rnd make ch-9 loops; on 8th rnd make ch-10 loops; on 9th rnd make ch-11 loops (8 dc in each group on 9th rnd); join.

**10th rnd:** Sl st in next 2 dc, ch 3, dc in next 5 dc, \* ch 6, sc in next loop, ch 6, skip 1st 2 dc of next group, dc in next 6 dc, ch 10, sc in next loop, ch 10, skip 1st 2 dc of next group, dc in next 6 dc. Repeat from \* around; join. **11th rnd:** Sl st in next 2 dc, ch 3, dc in next 3 dc, \* ch 7, sc in next loop, sc in following loop, ch 7, skip 1st 2 dc of next dc-group, dc in next 4 dc, ch 6, 4 dc in next loop, ch 10, 4 dc in next loop, ch 6, skip 1st 2 dc of next group, dc in next 4 dc. Repeat from \* around; join. **12th rnd:** Sl st in next 2 dc, ch 3, dc in next dc, \* ch 11, sc between the 2 sc of previous rnd, ch 11, skip 1st 2 dc of next group, dc in next 2 dc, ch 7, 4 dc in next loop, ch 7, 4 dc in next loop, ch 11, 4 dc in same loop (this is corner). Ch 7, 4 dc in next loop, ch 7, skip 1st 2 dc of next group, dc in next 2 dc. Repeat from \* around. Join and fasten off.

**SECOND MOTIF . . .** Work 1st 11 rnds as for 1st motif. **12th rnd:** Sl st in next 2 dc, ch 3, dc in next dc, ch 11, sc between the 2 sc of previous rnd, ch 11, skip 1st 2 dc of next dc-group, dc in next 2 dc. Ch 7, 4 dc in next loop, ch 7, 4 dc in following loop, ch 5, sc in corner loop of 1st motif (always keep right side of work on top). Ch 5, 4 dc in same loop back on 2nd motif, ch 3, sc in next ch-7 loop of 1st motif, ch 3, 4 dc in next loop on 2nd motif, ch 3, sc in next loop on 1st motif, ch 3, skip 1st 2 dc of group on 2nd motif and make dc in next 2 dc, ch 5, sc in next ch-11 loop on 1st motif, ch 5, sc between the 2 sc on 2nd motif.

Ch 5, sc in ch-11 loop on 1st motif, ch 5, skip 1st 2 dc of group on 2nd motif and make dc in next 2 dc, ch 3, sc in next loop on 1st motif, ch 3, 4 dc in next loop back on 2nd motif. Ch 3, sc in next loop on 1st motif, ch 3, 4 dc in next loop on 2nd motif, ch 5, sc in corner loop on 1st motif, ch 5, 4 dc in same loop on 2nd motif, ch 7, 4 dc in next loop on 2nd motif. Complete rnd as for 1st motif (no more joinings).

*Continued on page 17*



Seven





## OLD AND NEW FAVORITES TO CROCHET

## Square-a-Day

**HOSPITALITY No. 7067****MATERIALS:**

CLARK'S O.N.T. or J. & P. COATS BEST SIX CORD MERCERIZED CROCHET, size 10. See thread information on page 22.

Milward's Steel Crochet Hook No. 5.

**GAUGE:** Using the materials recommended, 2 sps make 1"; 2 rows make 1" (when blocked). Each square measures about 19½" before blocking and about 20½" after blocking, and requires about 320 yds. of thread.

**RECOMMENDED USES:** Tablecloths, bedspreads.

**SQUARE . . .** Starting at center, ch 11, join with sl st. **1st rnd:** Ch 4 (to count as tr), 4 tr in ring, \* ch 7, 5 tr in ring. Repeat from \* until 4 groups of tr's are made. Then ch 7, join with sl st to 4th st of ch-4. **2nd rnd:** Ch 4, tr in each of next 4 tr, \* 4 tr in corner sp, ch 7, 4 tr in same corner sp, tr in each of next 5 tr. Repeat from \* around. Join as before. **3rd rnd:** Ch 7 (to count as tr and ch-3), \* skip 3 tr, tr in next tr, ch 3, tr in last tr of tr-group, ch 3, tr in corner st of ch-7, ch 7, tr in same corner st, ch 3, tr in 1st tr of tr-group on other side, ch 3, skip 3 tr, tr in next tr, ch 3. Repeat from \* around. Join to 4th st of ch-7. **4th rnd:** Ch 7, \* skip ch-3, tr in next tr, ch 3, skip ch-3, tr in next tr,

3 tr in sp, tr in next tr, 4 tr in corner sp, ch 7, 4 tr in same corner sp, tr in next tr, 3 tr in next sp, tr in next tr, ch 3, skip ch-3, tr in next tr, ch 3. Repeat from \* around; join to 4th st of ch-7 first made.

**5th rnd:** Ch 7, \* skip ch-3, tr in next tr, 3 tr in sp, tr in each tr of tr-group, 4 tr in corner sp, ch 7, 4 tr in same corner sp, tr in next tr, tr in each tr of tr-group, 3 tr in sp, tr in next tr, ch 3. Repeat from \* around. Join as before.

**6th to 20th rnds incl:** Work in the same manner following chart, making ch-3 for sps and ch-7 for each corner sp, and joining each rnd with a sl st. The dotted line on chart shows where each rnd begins. At end of 20th rnd, join and fasten off.

Make necessary number of squares and sew together on wrong side with neat over-and-over stitches.

For edging, work 3 rnds of tr around entire article, keeping work flat.

**GOLDEN WEDDING No. 672****MATERIALS:**

J. & P. COATS BEDSPREAD COTTON.

See thread information on page 22.

Milward's Steel Crochet Hook No. 8.

**GAUGE:** Using the materials recom-

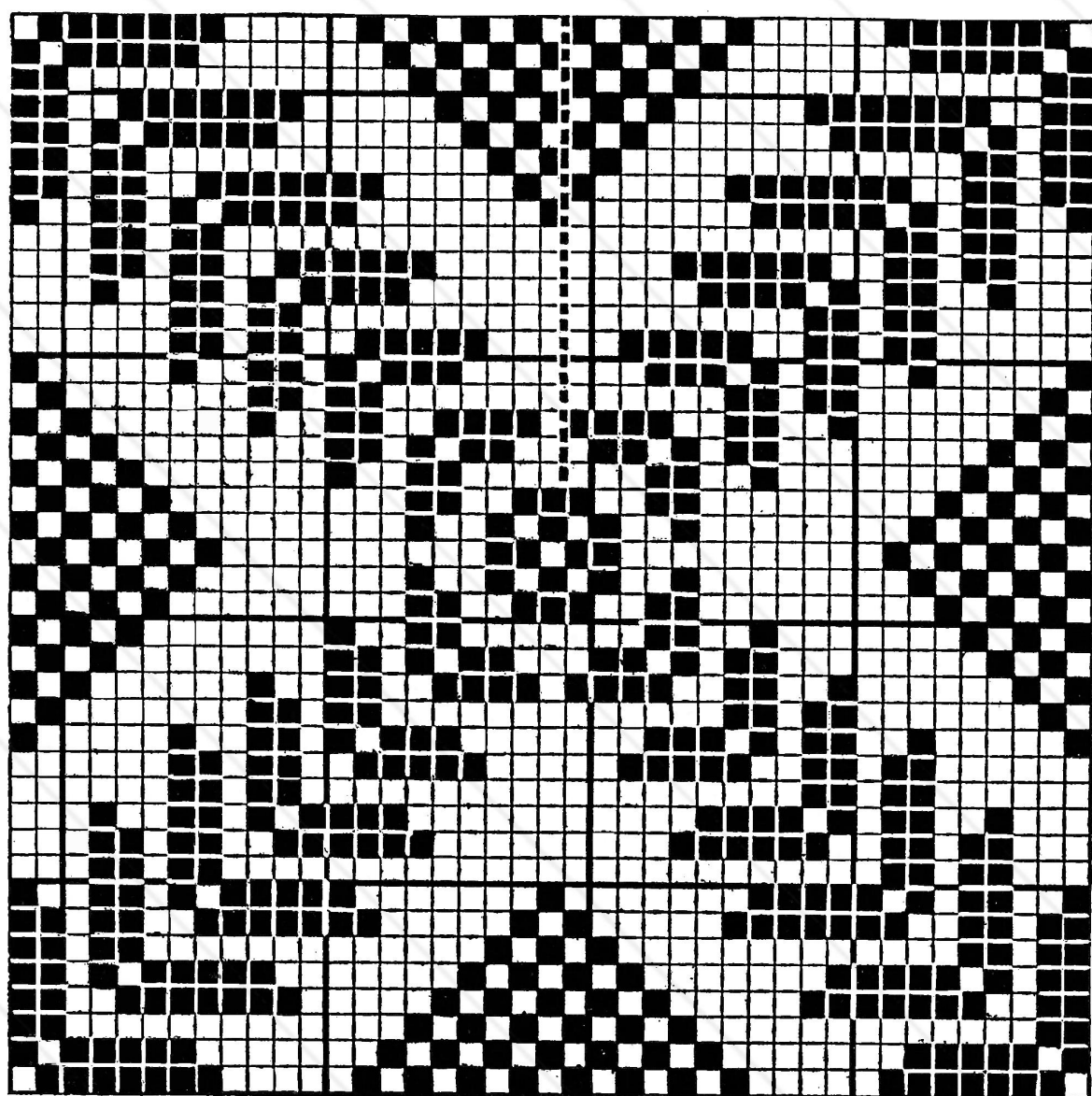
mended, 4 sps make 1"; 4 rows make 1". Each motif measures 7½" square and requires about 100 yds. of thread. About 2 balls are required for bedspread fringe.

**RECOMMENDED USE:** Bedspreads.

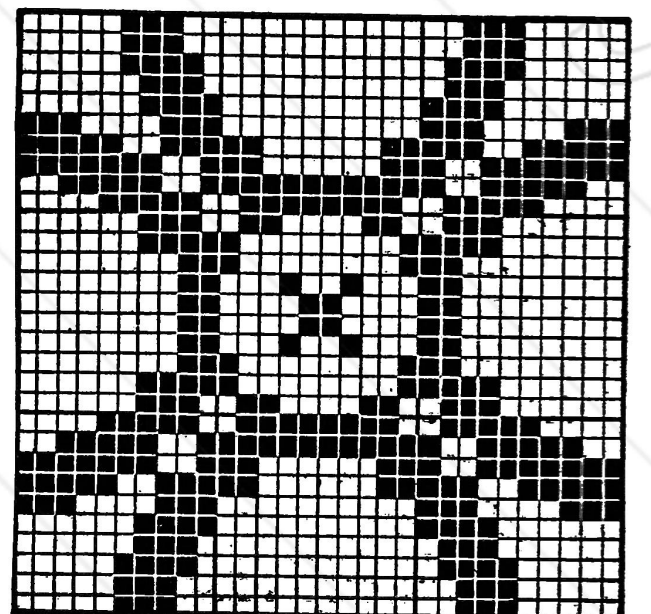
**MOTIF . . .** Starting at center section, ch 15. **1st row:** Dc in 3rd ch from hook and in next 2 ch (these 4 dc make 1 bl); ch 2, skip 2 ch, dc in next ch (sp); make another sp, end with 4 dc (bl). Ch 5, turn. **2nd row:** Dc in last dc of bl; make dc in next 2 ch, dc in dc, dc in next 2 ch and in dc. Ch 2, dc in top st of turning ch-3. Ch 5, turn. **3rd row:** Sp over sp and bl over bl. Ch 3, turn. **4th row:** Dc in next 2 ch and in dc, 2 sps over next 2 bls, bl over next sp (center section completed). Hereafter work in rnds.

**1st rnd:** Ch 5, dc at base of last dc made, ch 2, dc at base of dc (turning ch) of previous row, ch 2, dc at base of next end dc, ch 2, dc at base of next ch-3, ch 5 (corner), dc in same place, sp over next bl. Continue to make sps thus around and ch-5 at corners, ending with ch 5, join with sl st to 3rd ch of ch-5 first made. **2nd rnd:** Ch 5, dc in next dc. Now make sp over each sp around, making an extra ch-5 at each corner. Join. **3rd rnd:** Ch 5 (to count as dc of last bl and ch-2 of 1st sp), dc in next dc; 3 more sps, 7 dc (2 bls); ch 5, another dc in corner ch, 6 more dc, 4 sps, 7 dc. Continue thus around. Join. **4th rnd:** Ch 3, 4 bls over 4 sps, 2 bls over 2 bls, ch 2, dc in 3rd ch of corner ch-5, ch 5, dc in same place, ch 2, dc in next dc, 8 bls, sp, ch 5 for corner sp, sp. Continue thus around, ending with 2 bls, join. Follow chart for remainder of pattern, always making an extra ch-5 at corners and working into center st of this ch on following rnd.

Make necessary number of motifs and sew together on wrong side with neat over-and-over stitches. Make fringe in every other sp around.



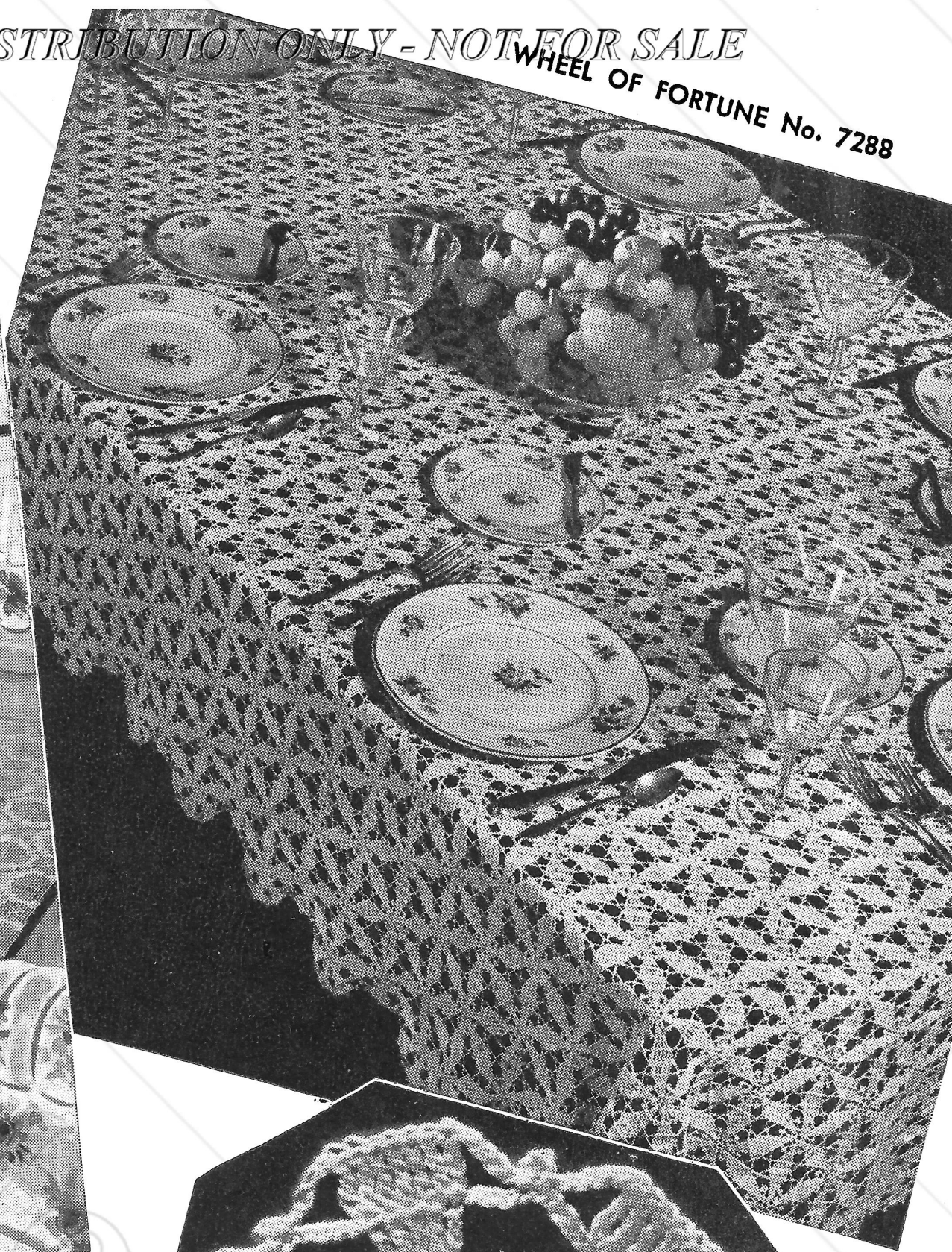
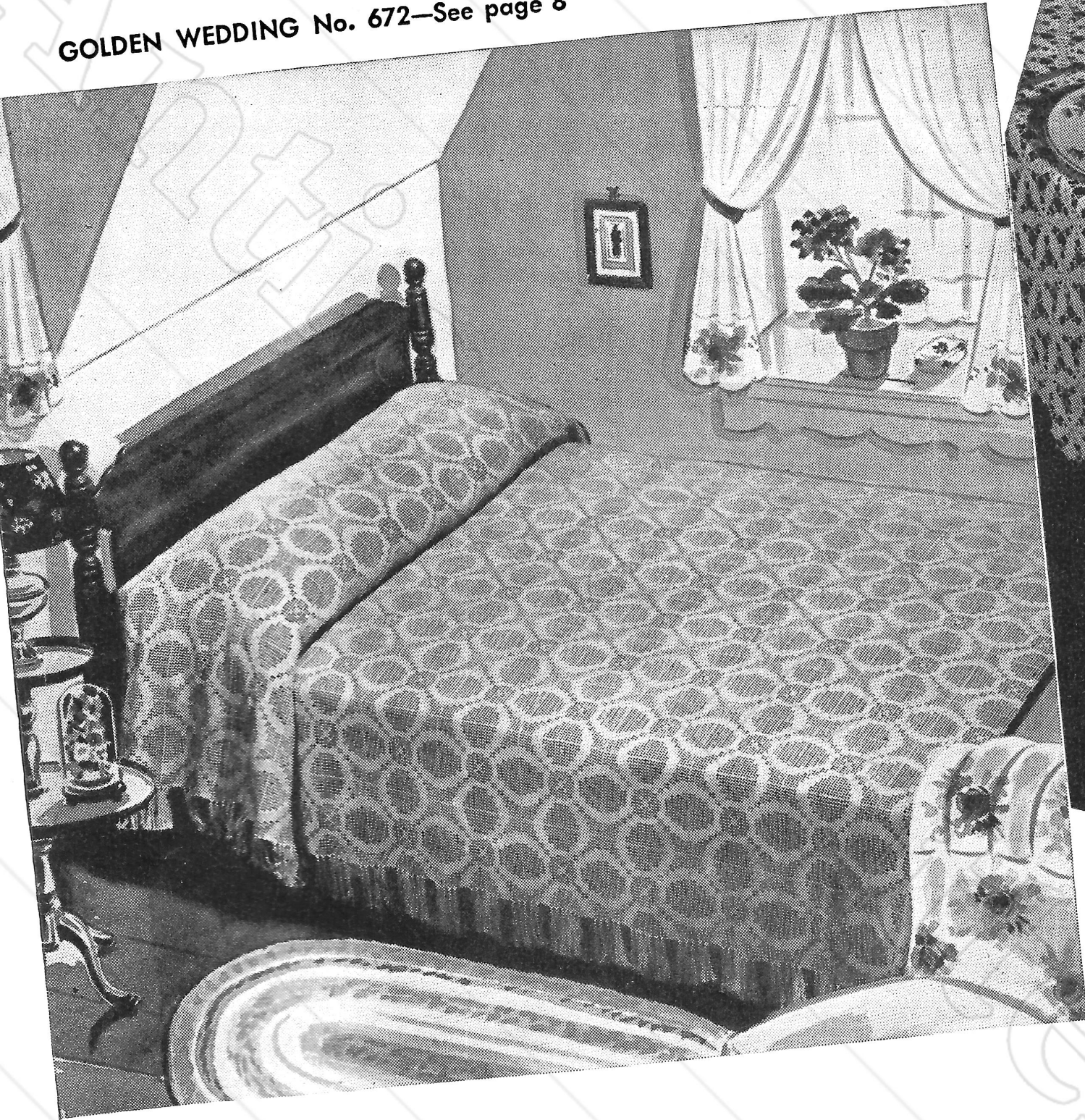
Left:  
CHART FOR No. 7067



Right:  
CHART FOR No. 672



GOLDEN WEDDING No. 672—See page 8

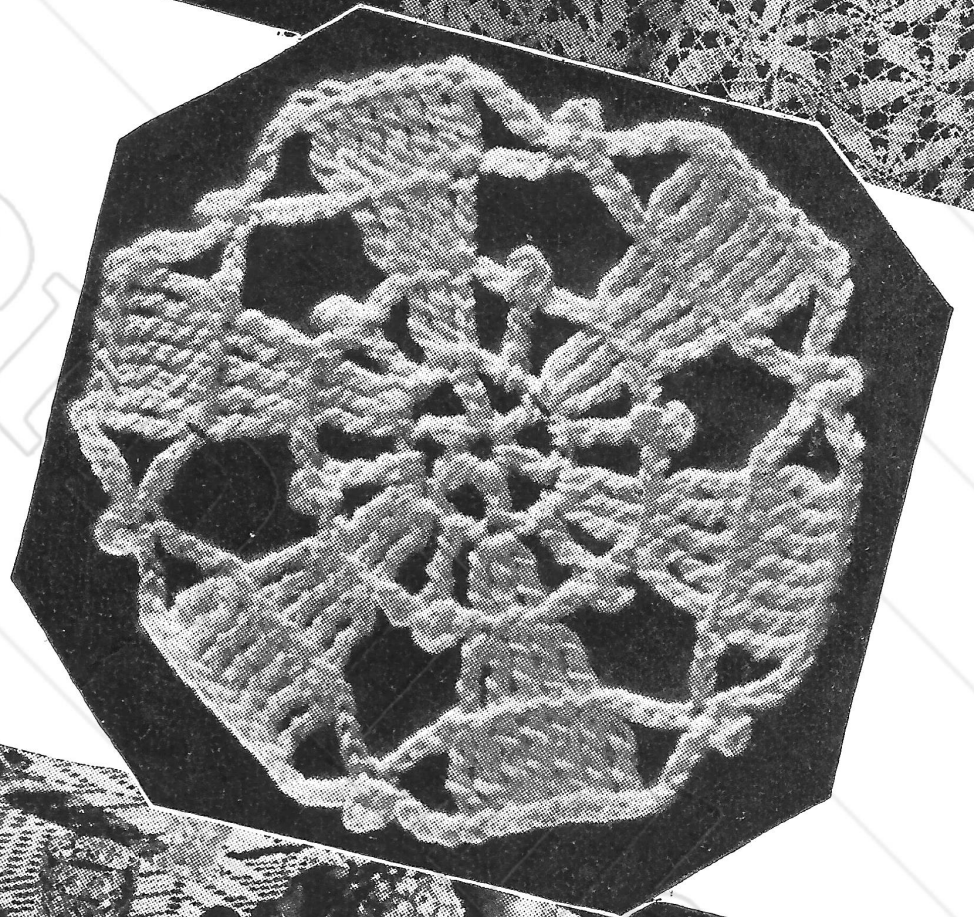


WHEEL OF FORTUNE No. 7288

# Crochet Magic

Here are three designs which, when joined, form another design that is a complete surprise. Favorites all!

DETAIL  
OF No. 7288



## WHEEL OF FORTUNE No. 7288

### MATERIALS:

J. & P. COATS KNIT-CRO-SHEEN. See thread information on page 22.

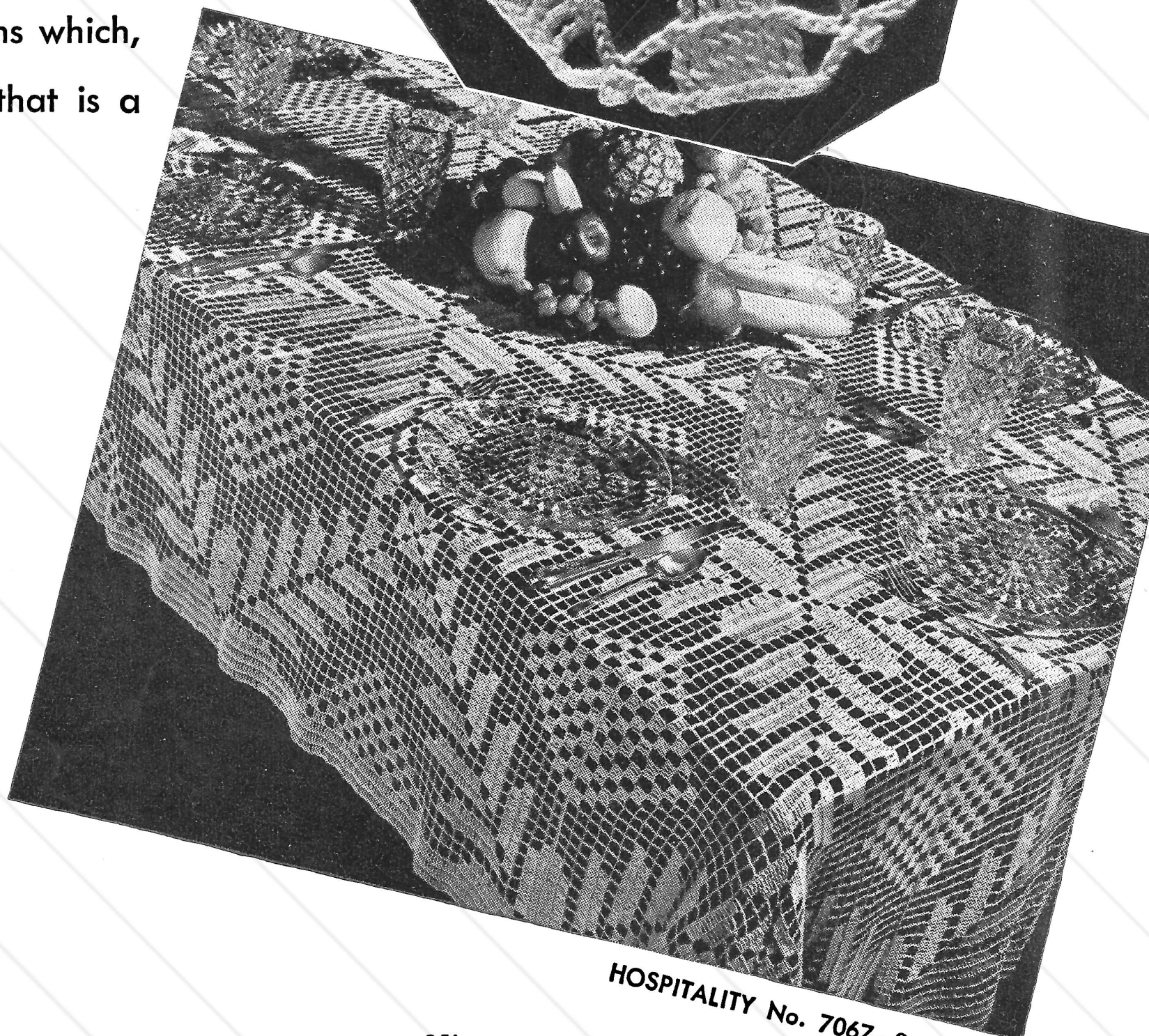
Milward's Steel Crochet Hook No. 6.

**GAUGE:** Using the materials recommended, each motif measures  $3\frac{1}{2}$ " from side to side when blocked, and requires about  $10\frac{1}{2}$  yds. of thread.

**RECOMMENDED USES:** Tablecloths, bedspreads, luncheon sets, bureau scarfs, chair sets, centerpieces.

**MOTIF . . .** Starting at center, ch 6, join with sl st. **1st rnd:** Ch 5, \* dc in ring, ch 2. Repeat from \* 4 more times, join to 3rd st of ch-5. **2nd rnd:** Ch 4, 2 tr in same place as sl st, \* ch 2, tr in next sp, ch 3, sl st in last tr, ch 2, 3 tr in next tr. Repeat from \* around. Join last ch-2 with sl st to 4th st of ch-4. Now pick up only the back loop of each tr

*Continued on page 22*



HOSPITALITY No. 7067—See page 8

Nine





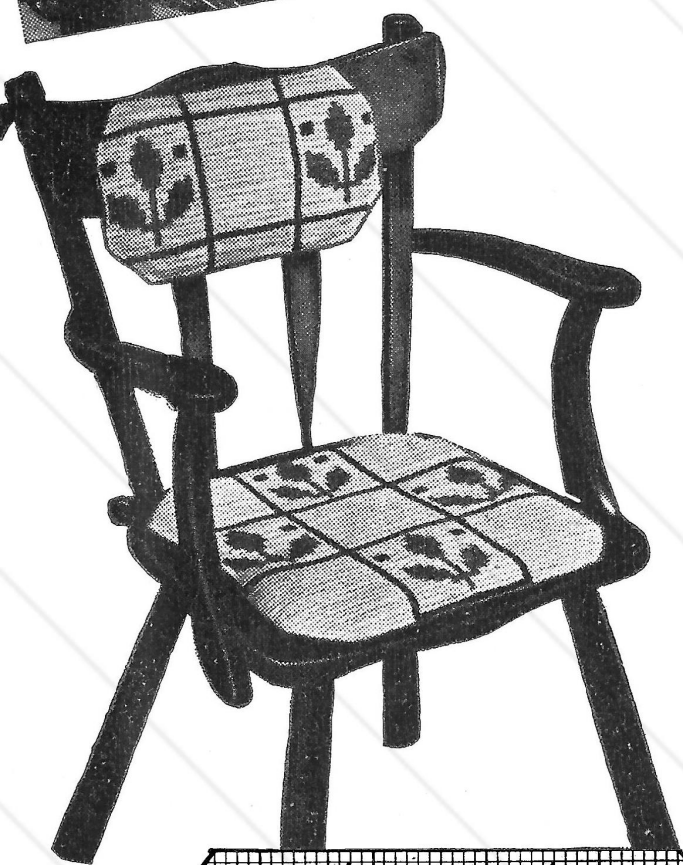
**MATCHING SET**  
No. 7165—See page 20



**CHAIR SEAT No. 7250—See page 11**

## Cameo Crochet

For a smart modern or peasant effect, cameo crochet is an outstanding favorite. Versatile, too.



**COLONIAL CHAIR SET**  
No. 7168

### COLONIAL CHAIR SET No. 7168

#### MATERIALS:

CLARK'S O.N.T. or J. & P. COATS PEARL COTTON, size 5, 9 balls of Ecrú and 2 balls each of Green and Blue. Milward's steel crochet hook No. 6 or 7. Bias binding. Cotton batting. 1 yd. of any material.

Completed chair seat measures about 16" x 16", measuring across center; chair back measures about 8" x 14½".

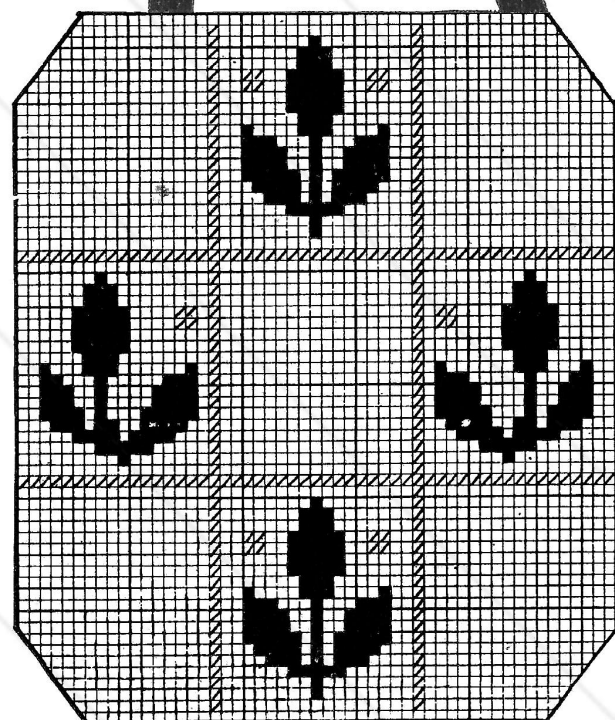
**GAUGE:** 10 sts make 1"; 4 rows make 1" (1 square is equivalent to 3 dc).

**TO CHANGE COLOR:** Before drawing through last 2 loops of last dc of one

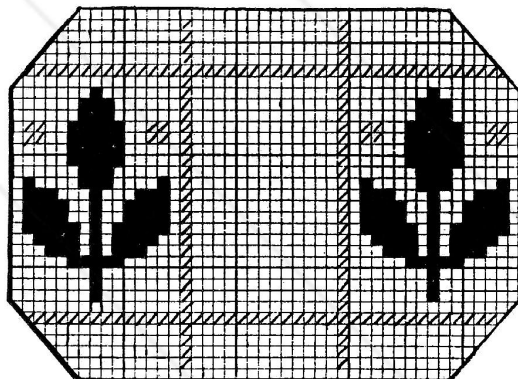
color-group, drop this color, pick up 2nd color, thread over and draw through the 2 loops on hook. Continue with 2nd color according to chart, carrying the dropped color along top of previous row and working over it to conceal.

**CHAIR SEAT . . .** Starting at front edge, with Ecrú ch 125. **1st row:** Dc in 4th ch from hook, dc in each ch across (123 dc, counting turning ch as 1 dc). Ch 3, turn. **2nd row:** 2 dc in 1st dc (2 dc increased), dc in each of next 29 dc. Then, holding Blue along top of 1st row, with Ecrú make dc in each of next 3 dc (thus concealing Blue), changing color in last dc of Ecrú group. With Blue make dc in each of next 3 dc, carrying Ecrú concealed in dc's and changing color in last dc of Blue group. With Ecrú make dc in each of next 51 dc, carrying Blue concealed in dc's and changing color in last dc of Ecrú group. With Blue make dc in each of next 3 dc, carrying Ecrú as before and changing color in last dc of Blue group. With Ecrú make dc in each dc across, dropping Blue after carrying it for 3 sts, and inc. 2 sts at end of row (127 dc). **3rd row:** 2 dc in 1st dc, dc in each of next 31 dc; conceal Blue in next 3 Ecrú dc, changing color in last dc of Ecrú group; 3 Blue dc, changing color as before; 21 Ecrú dc. Then, holding Green with Blue along top of 2nd

*Continued on page 20*



☒ BLUE  
☐ ECRU  
☒ GREEN



THERE ARE 10  
SPACES BETWEEN  
HEAVY LINES

CHARTS FOR No. 7168



# OLD AND NEW FAVORITES TO CROCHET

## CHAIR SEAT No. 7250

### MATERIALS:

J. & P. COATS KNIT-CRO-SHEEN,  
3 balls of dark color and 2 balls of  
light color.

Milward's Steel Crochet Hook No 8 or 9.

Seat Cover measures about 18" at front  
edge, 14" at back edge, and 14" along  
both side edges. Side strip measures  
about 3" deep.

**GAUGE:** 10 dc make 1"; 4 rows make  
1" (each individual square on chart in-  
dicates 3 dc).

**CHAIR SEAT COVER . . .** Starting at  
front edge, with dark color ch 185 (to  
measure about 19"). **1st row:** Dc in  
4th ch from hook, dc in next ch, thread  
over, insert hook in next ch and draw  
loop through; thread over and draw  
through 2 loops; drop dark color, attach  
light color and draw through remaining  
2 loops (3 dark dc made). Holding dark  
color along top of chain and working  
over it to conceal it, work dc in 7 ch.  
Thread over, insert hook in next ch and  
draw loop through; thread over and  
draw through 2 loops; drop light color,  
pick up dark color and draw through  
remaining 2 loops (6 light dc made).  
\* With dark color make 3 dc, carrying  
light color concealed and completing last  
dc with light color as before. Make 6  
light dc, carrying dark color and com-  
pleting last dc with dark color. Repeat  
from \* 18 more times, 3 dark dc, ch 3,  
turn. **2nd row:** Working into dc, carry-  
ing unused color and working over it  
to conceal it, make 2 dark dc, \* 6 light  
dc, 3 dark dc. Repeat from \* across.  
Hereafter follow chart, decreasing 1 st  
at both ends of the 10th row and every  
other row thereafter until 141 sts re-

main—to dec. work off 2 dc as 1 dc.  
When design is completed, fasten off  
light color (141 dc). With dark color,  
sl st across 1st 10 dc, ch 3 and make  
dark dc in each dc across to within 10 dc  
from opposite end. Work across these  
121 dc without decreasing for 3". Fasten  
off.

**SIDE STRIP . . .** With dark color ch 32  
(to measure about 3¼"). **1st row:** Dc  
in 4th ch from hook, dc in each ch across  
(30 dc, counting turning ch). Ch 3, turn.  
**2nd row:** Dc in each dc across. Ch 3,  
turn. Repeat 2nd row until piece is long  
enough to go around the 2 side edges and  
front edge of chair seat cover (about  
46"). Fasten off. Sew edge of this strip  
to front and side edges of chair seat  
cover.

**CORDS . . .** Cut 12 strands of light  
color, each 6 yds. long. Twist strands  
tightly, then double the twisted strands  
and give them a 2nd twist in the oppo-  
site direction. Sew this cord along edges  
of chair seat cover where strip was  
joined, and across back where color-  
pattern ends. Make another cord same as  
this, and sew all around outer edges. Cut  
remaining cord into 4 pieces of equal  
length, to be used as ties.

## MODERN RUSTIC No. 7140

### MATERIALS:

J. & P. COATS KNIT-CRO-SHEEN,  
4 balls of White or Ecru for main  
color (to be referred to as "M"), and  
8 balls of a contrasting color (to be  
referred to as "C").

Milward's Steel Crochet Hook No. 8 or 9.

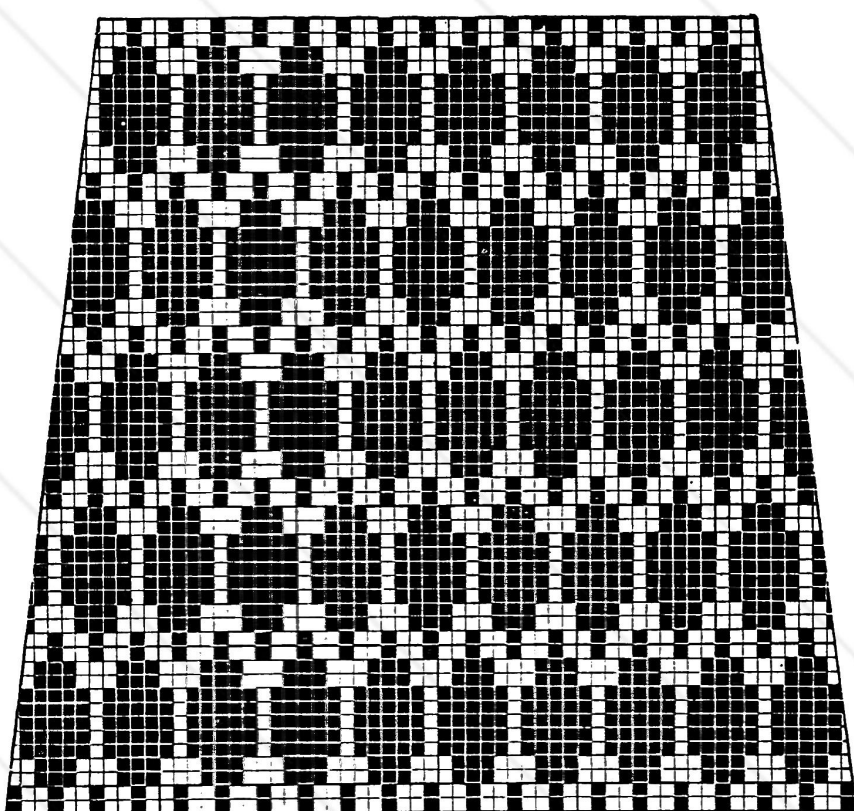
The above amount of materials is suffi-  
cient for 4 place mats, each about 11½"  
x 17", and a center mat about 14" x 32".

**GAUGE:** 12 dc make 1"; 4 rows make 1".

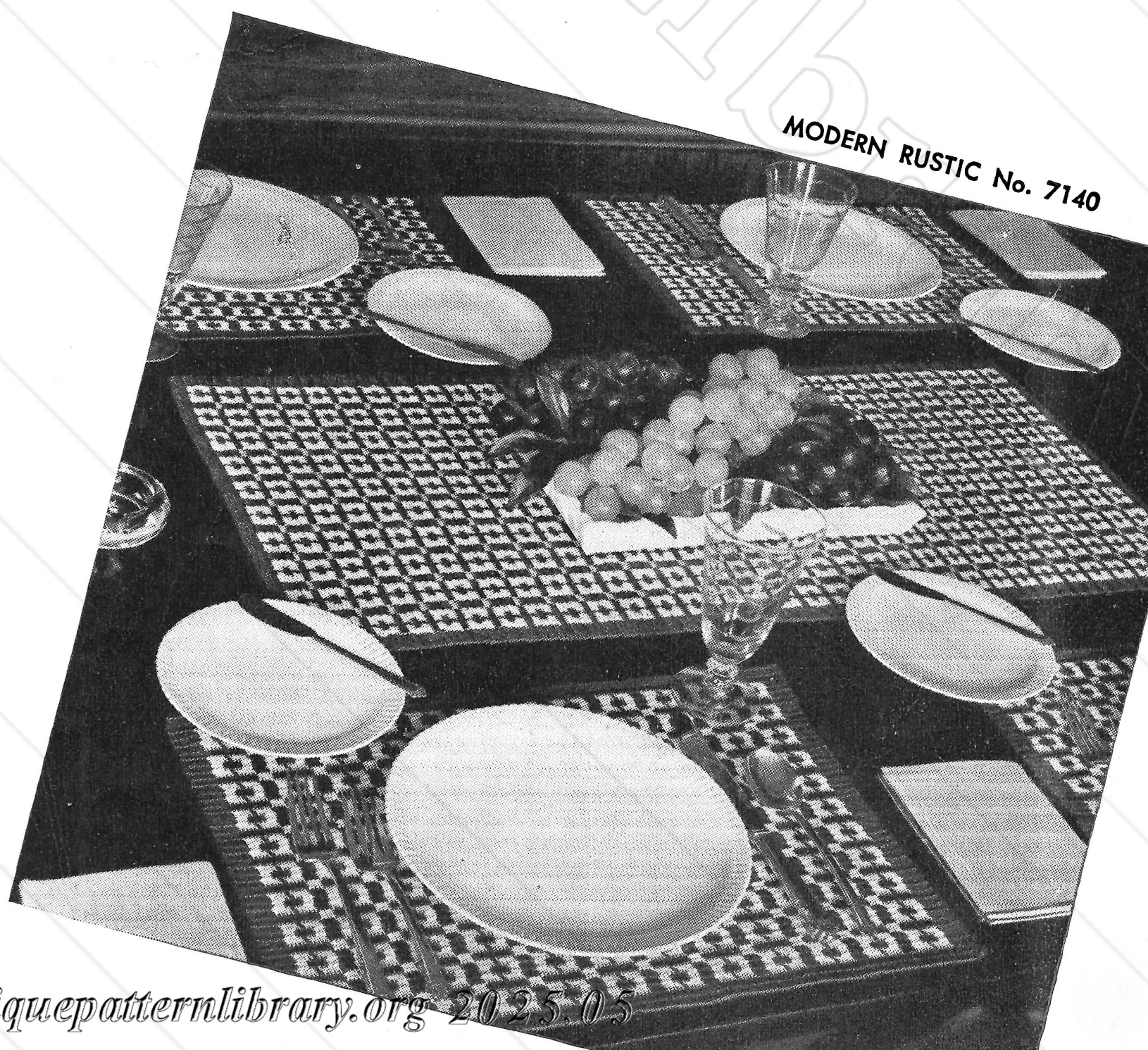
**PLACE MATS—(Make 4) . . .** Starting  
at long side, with C color ch 192 (to  
measure about 18"). **1st row:** Dc in 4th  
ch from hook, dc in each ch across (190  
dc, counting turning ch-3 as 1 dc). Ch 3,  
turn. **2nd row:** Dc in each dc across.  
Ch 3, turn. **3rd row:** Dc in each of 5 dc;  
dc in next dc, leaving the last 2 loops  
on hook, drop C, attach M color, and  
\* draw through 2 loops. Then, holding  
C along top of previous row, make dc  
in each of next 4 dc (thus concealing  
C); dc in next dc, leaving the last 2  
loops on hook, drop M, pick up C and  
draw through 2 loops; dc in next dc,  
leaving the last 2 loops on hook, drop  
C, pick up M and draw through 2 loops;  
dc in each of next 5 dc, leaving the last  
2 loops on hook and concealing C as  
before; drop M, pick up C and draw  
through 2 loops. Then, holding M along  
top of previous row, make dc in each of  
4 dc, leaving the last 2 loops on hook  
(thus concealing M); drop C, pick up  
M. Repeat from \* across, ending row  
with 5 M dc and 7 C dc. Ch 3, turn.  
Hereafter work as follows, changing  
color and concealing unused color as  
before. **4th row:** 6 C dc, \* 3 M dc,  
5 C dc, 3 M dc, 4 C dc. Repeat from  
\* across, ending with 7 C dc. Ch 3, turn.  
**5th row:** 6 C dc, \* 5 M dc, 1 C dc,  
5 M dc, 4 C dc. Repeat from \* across,  
ending row with 7 C dc. Ch 3, turn.  
**6th row:** 17 C dc, \* 4 M dc, 11 C dc.  
Repeat from \* across, ending row with  
18 C dc. Ch 3, turn. The last 4 rows  
(3rd to 6th rows incl.) constitute the  
pattern. Repeat pattern 10 more times,  
but omit the 6th row of the last pattern.

*Continued on page 21*

CHART BELOW FOR No. 7250



■ DARK COLOR □ LIGHT COLOR  
EACH INDIVIDUAL SQUARE INDICATES 3 D.C.



Eleven



## LUCKY STAR No. 7144

### LUCKY STAR No. 7144

#### MATERIALS:

CLARK'S BIG BALL MERCERIZED CROCHET, size 20. See thread information on page 22.

Milward's Steel Crochet Hook No. 11.

**GAUGE:** Using the materials recommended, each motif measures  $4\frac{1}{2}$ " in diameter and requires about 35 yds. of thread. Fill-in requires about 4 yds.

**RECOMMENDED USES:** Tablecloths, bedspreads, runners, chair sets.

**MOTIF . . .** Starting at center, ch 8, join with sl st to form a ring. **1st rnd:** Ch 5, \* dc in ring, ch 2. Repeat from \* 6 more times. Join last ch-2 with sl st to 3rd st of ch-5 first made (8 sps). **2nd rnd:** Sl st in ch-2 sp, ch 3, 2 dc in same sp, ch 2, \* 3 dc in next sp, ch 2. Repeat from \* around. Join last ch-2 with sl st to 3rd st of ch-3 first made. **3rd rnd:** Ch 3, dc in same place as sl st, \* dc in next dc, 2 dc in next dc, ch 2, 2 dc in next dc. Repeat from \* around, ending with ch 2. Join to 3rd st of ch-3 first made. **4th rnd:** Ch 3, dc in same place as sl st, \* dc in each of next 3 dc, 2 dc in next dc, ch 2, 2 dc in next dc. Repeat from \* around, ending with ch 2. Join. **5th rnd:** Ch 3, dc in same place as sl st, \* dc in each of next 5 dc, 2 dc in next dc, ch 3, 2 dc in next dc. Repeat from \* around, ending with ch 3. Join. **6th rnd:** Sl st in next dc, ch 3, \* dc in each of next 6 dc, ch 3, sc in ch-3 sp, ch 3, skip 1 dc, dc in next dc. Repeat from \* around, ending with ch 3. Join. **7th rnd:** Sl st in next dc, ch 3, \* dc in each of next 4 dc, ch 4, sc in ch-3 sp, sc in next sc, sc in next ch-3 sp, ch 4, skip 1 dc, dc in next dc. Repeat from \* around. Join. **8th rnd:** Sl st in next dc, ch 3, \* dc in each of next 2 dc, ch 5, sc in ch-4 sp, sc in each of next 3 sc, sc in next sp, ch 5, skip 1 dc, dc in next dc. Repeat from \* around, ending with ch 5. Join. **9th rnd:** Sl st in next dc, ch 3, 2 dc in same place as sl st, holding back the last loop of each dc on hook; thread over and draw through all loops on hook, ch 1 to fasten (thus a 3-dc cluster is made—counting ch-3 as 1 dc); \* ch 6, sc in ch-5 loop, sc in each of next 5 sc, sc in next loop, ch 6, skip 1 dc, 3-dc cluster in next dc. Repeat from \* around, ending with ch 6, sl st in tip of 1st cluster made. **10th rnd:** Sc in same place as sl st, \*\* ch 5, skip 3 sc, tr in next sc, \* ch 2, tr in same sc. Repeat from \* 2 more times, ch 5, sc in tip of next cluster. Repeat from \*\* around, ending with ch 5. Join. **11th rnd:** Ch 6, dc in same place as sl st, \* ch 3, 4 sc in ch-5 loop, sc in ch-2 sp, ch 3; in next ch-2 sp make dc, ch 3, dc; ch 3, sc in next ch-2 sp, 4 sc in next ch-5 loop, ch 3; in next sc make dc, ch 3, dc. Repeat

PINE CONE  
No. 6025

from \* around, ending with ch 3. Join with sl st to 3rd st of ch-6 first made. **12th rnd:** Sl st in ch-3 sp, ch 6, dc in same sp, \* ch 3, sc in next ch-3 sp, ch 2, skip 2 sc, sc in next sc, ch 2, sc in next sp, ch 3; in next ch-3 sp (between dc's) make dc, ch 3, dc. Repeat from \* around, ending with ch 3, sl st in 3rd st of ch-6 first made. Fasten and break off. This completes motif.

Sew motifs together on wrong side with neat over-and-over stitches, joining 2 points of each motif to 2 points of adjacent motifs, leaving 2 points free on each motif, between joinings, to be filled in later.

**FILL-IN LACE . . .** Ch 8, join with sl st to form ring. **1st rnd:** Ch 5, \* dc in ring, ch 2. Repeat from \* 6 more times. Join with sl st to 3rd st of ch-5 first made (8 sps). **2nd rnd:** Sc in same place as sl st, \* ch 18, sc at joining of 2 motifs, ch 18, sc in same place as 1st sc was made, sc in next sp, ch 9, sc in next point on motif, ch 9, sc in same sp on ring where last sc was made, sc in next sp, ch 9, sc in next point, ch 9, sc in same sp on ring where last sc was made, sc in next dc. Repeat from \* around. Join with sl st. Fasten off.

### PINE CONE No. 6025

#### MATERIALS:

CLARK'S O.N.T. MERCERIZED BEDSPREAD COTTON. See thread information on page 22.

Milward's Steel Crochet Hook No. 7 or 8.

**GAUGE:** Using the materials recommended, each block measures 8" square and requires about 96 yds. of thread.

**RECOMMENDED USES:** Bedspreads and matching runners.

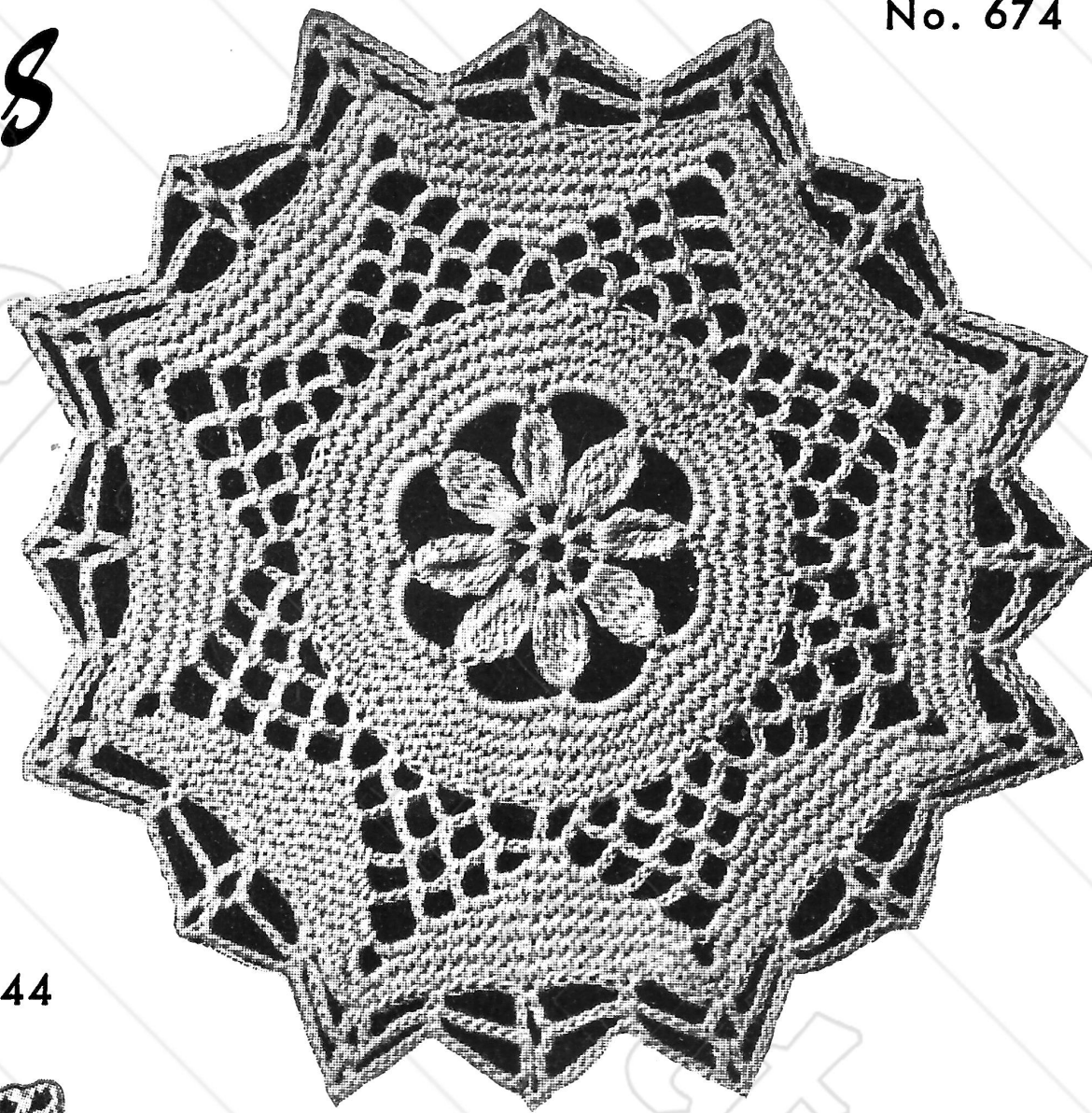
**FIRST BLOCK . . . 1st rnd:** Ch 4, make 11 half dc in 3rd ch from hook. Join with sl st to top st of ch-4. **2nd rnd:** Ch 3 (to count as dc), dc in same place as joining, 2 dc in each of next 11 half dc (24 dc in all). Join to top of ch-3. **3rd rnd:** Ch 3, 2 dc in same place as sl st; \* ch 4, sc in 1st ch of ch-4 (a p made); skip 2 dc, 3 dc in next dc. Repeat from \* around, ending with p, join. **4th rnd:** Ch 9, dc in 4th ch from hook; make 5 more dc over remaining chain, working over bar of chain rather than into individual ch's (7-dc group made). \* Ch 3 (to count as dc), turn. Dc in next 6 dc; ch 3, turn. Dc in next 6 dc (a square made). Skip 3-dc group and next p of

*Continued on page 17*



# star transformers

proved these four de-  
be universally popu-  
Repeated by request  
ore, we offer them  
in as your especial  
rites.



**BALLERINA**  
No. 674

## **BALLERINA** No. 674

### **MATERIALS:**

CLARK'S O.N.T. or J. & P. COATS BEST  
SIX CORD MERCERIZED CROCHET  
size 20. See thread information on  
page 22.

Milward's Steel Crochet Hook No. 10.

**GAUGE:** Using the materials recom-  
mended, each motif measures 5" in di-  
ameter and requires approximately 46  
yds. of thread. Fill-in requires about  
2½ yds.

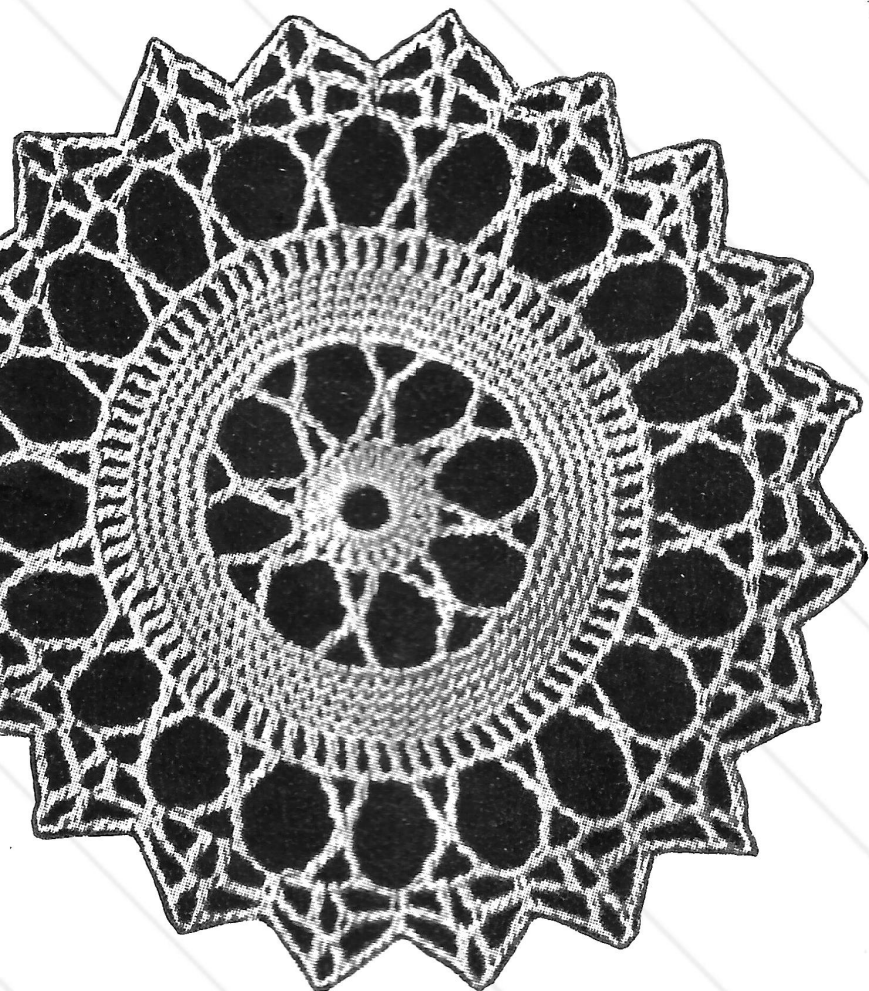
**RECOMMENDED USES:** Tablecloths,  
bedspreads, luncheon sets, runners.

**MOTIF . . .** Starting at center, ch 8, join  
with sl st. **1st rnd:** Ch 5, \* dc in ring,  
ch 2. Repeat from \* 6 more times. Join  
to 3rd st of ch-5 (8 sps). **2nd rnd:** Sl st  
in next sp, ch 5, 4 d tr in same sp, hold-  
ing back the last loop of each d tr on  
hook; thread over and draw through all  
loops on hook (a cluster); \* ch 8, 5 d tr  
in next sp, holding back the last loop of  
each d tr on hook; thread over and draw  
through all loops on hook (cluster). Re-  
peat from \* around, ending with ch 8,  
sl st at tip of 1st cluster made. **3rd rnd:**  
10 sc in each sp (80 sc in rnd). **4th to**  
**7th rnds incl:** Sc in each sc, ending 7th  
rnd with sl st in next st. **8th rnd:** \* Ch 5,  
skip 1 st, sc in next st, ch 5, skip 2 sts,  
sc in next st. Repeat from \* around (32  
loops). **9th rnd:** Sl st to center of next  
loop, 2 sc in loop, \* ch 5, sc in next loop.  
Repeat from \* 2 more times, ch 5, 2 sc  
in next loop, and continue thus around,  
ending with sl st in 1st sc made. **10th**  
**rnd:** Ch 1, sc in next 2 sc, \* 2 sc in next  
loop; (ch 5, sc in next loop) twice, ch 5,  
2 sc in next loop, sc in next 2 sc. Repeat  
from \* around, ending with 2 sc in last  
loop, sl st in ch-1 first made. **11th rnd:**  
Ch 1, sc in next 4 sc, \* 2 sc in next  
loop, ch 5, sc in next loop, ch 5, 2 sc in  
next loop, sc in next 6 sc. Repeat from \*  
around, ending with sl st in ch-1 first  
made. **12th rnd:** Ch 1, sc in next 6 sc,  
\* 2 sc in next loop, ch 7, 2 sc in next  
loop, sc in next 10 sc. Repeat from \*  
around, ending rnd as before. **13th rnd:**  
Ch 1, sc in next 8 sc, \* in ch-7 loop  
make 2 sc, ch 5, 2 sc; sc in next 14 sc.  
Repeat from \* around; join. **14th rnd:**  
Ch 1, sc in each sc, making 5 sc in each  
ch-5 loop; join. **15th rnd:** Ch 1, sc in  
each sc, making 2 sc in center st of 5-sc  
group; join. **16th rnd:** Sc in next sc,  
ch 6 (to count as dc and ch-3), dc in  
same place as last sc, \* ch 6, skip 5 sc,  
sc in next sc, ch 6; in center sc at tip of  
next point make dc, ch 3, dc; ch 6, skip  
5 sc, sc in next sc, ch 6, skip 5 sc; in  
next sc make dc, ch 3, dc. Repeat from \*  
around, joining last ch-6 to 3rd st of ch-6  
first made. **17th rnd:** Sl st in next ch,  
sc in sp, ch 6, dc in same sp, \* ch 6,  
sc in next sc, ch 7; in sp at point make  
dc, ch 3, dc; ch 7, sc in next sc, ch 6;  
in next sp make dc, ch 3, dc. Repeat  
from \* around. Join and fasten off.

Make necessary number of motifs.  
With over-and-over stitches sew 3 points  
at 1 side of motif to corresponding 3

*Continued on page 21*

**STAR WHEEL** No. 744



## **STAR WHEEL** No. 744

### **MATERIALS:**

CLARK'S O.N.T. or J. & P. COATS BEST  
SIX CORD MERCERIZED CROCHET,  
size 20. See thread information on  
page 22.

Milward's Steel Crochet Hook No. 9.

**GAUGE:** Using the materials recom-  
mended, each motif measures 4¼" in  
diameter and requires about 30 yds. of  
thread. Fill-in lace requires about 4 yds.

**RECOMMENDED USES:** Tablecloths,  
bedspreads, luncheon sets, chair sets,  
runners, centerpieces.

**MOTIF . . .** Ch 10 and join with sl st  
to form ring. **1st rnd:** Ch 3, 23 dc in  
ring. Join with sl st to 3rd st of ch-3 first  
made. **2nd rnd:** Ch 10, and complete a

cross st as follows: Thread over twice,  
insert hook in 8th ch from hook, draw  
thread through (4 loops on hook),  
thread over once, skip 1 dc and insert  
hook in next dc, draw thread through  
(6 loops on hook), thread over, and take  
off 2 loops at a time, 5 times. \* Ch 3,  
thread over 4 times, insert hook in next  
dc and draw thread through (6 loops on  
hook), thread over, and take off 2 loops  
at a time twice, then thread over, skip  
1 dc, insert hook in next, draw thread  
through (6 loops on hook), thread over,  
and take off 2 loops at a time, 5 times.  
Ch 3, dc in center point of the cross,  
thus completing the cross. Repeat from  
\* until there are 8 cross sts around the  
circle. Join last ch-3 with sl st to 7th st  
of ch-10 first made. **3rd rnd:** 5 sc in  
each sp. **4th to 7th rnds incl:** Sc in  
each sc of previous rnd. **8th rnd:** Ch 4,  
dc in 1st sc, \* ch 1, dc in next sc, re-  
peat from \* to end of rnd. Then ch 1,  
and join with sl st to 3rd st of ch-4 first  
made. **9th rnd:** Ch 10, and complete  
cross st as before, skipping 2 dc between  
each leg of cross st and inserting hook  
under ch-1 sp. Ch 3 between each cross  
st. Skip 2 dc between each cross st. Re-  
peat around (20 cross sts) and join last  
ch-3 with sl st to 7th st of ch-10 first  
made. **10th rnd:** Sl st in 1st 2 sts of  
1st sp, ch 5, \* dc in same sp, ch 3,  
sc in next sp, ch 3, dc in next sp, ch 2,  
repeat from \* to end of rnd. Join last  
ch-3 with sl st to 3rd st of ch-5 first  
made. **11th rnd:** Ch 6, dc in same sp,  
\* ch 4, sc in next sc of previous rnd,  
ch 4, dc in next ch-2 sp, ch 3, dc in  
same sp. Repeat from \* to end of rnd,  
joining with sl st to 3rd st of ch-6 first  
made.

**TO JOIN MOTIFS . . .** With over-and-  
over stitches, sew 3 points of one motif  
to corresponding 3 points of the adjacent

*Continued on page 21*



## OLD AND NEW FAVORITES TO CROCHET

## For Variety of Sizes

PINEAPPLE LUNCHEON  
SET No. 7335

## MATERIALS:

CLARK'S O.N.T. or J. & P. COATS BEST  
SIX CORD MERCERIZED CROCHET,  
size 50:

## SMALL BALL:

CLARK'S O.N.T.—11 balls of White or  
Ecru or 13 balls of  
any color.

OR

J. & P. COATS—8 balls of White or Ecru  
or 11 balls of any color.

## BIG BALL:

CLARK'S O.N.T. OR J. & P. COATS—5  
balls of White or Ecru.

Milward's Steel Crochet Hook No. 12.

These materials are sufficient for a set consisting of centerpiece, 14" in diameter; 4 place doilies, 12" in diameter; 4 bread and butter plate doilies, 7" in diameter; and 4 glass doilies, 5½" in diameter.

**CENTERPIECE . . .** Starting at center, ch 16, join with sl st. **1st rnd:** Ch 3, 32 dc in ring, sl st in 3rd st of ch-3. **2nd rnd:** Ch 3, dc in each dc around; join to 3rd st of ch-3. **3rd rnd:** Ch 3, dc in same place as sl st, 2 dc in each dc around, sl st in 3rd st of ch-3. **4th rnd:** Repeat 2nd rnd. **5th rnd:** Ch 3, dc in same place as sl st, \* ch 3, skip 2 dc, 2 dc in next dc. Repeat from \* around, ending with ch 3, join to 3rd st of ch-3 (22 dc-groups). **6th rnd:** Sl st in next dc and in next sp, ch 3; in same sp make dc, ch 2 and 2 dc; in each ch-3 sp around make 2 dc, ch 2 and 2 dc; join. **7th rnd:** Sl st in next dc and in next ch-2 sp, ch 3, in same sp make dc, ch 2 and 2 dc; \* ch 1, in next ch-2 sp make 2 dc, ch 2 and 2 dc (shell over shell). Repeat from \* around, ending with ch-1; join.

**8th to 12th rnds incl:** Repeat 7th rnd, having an extra ch between each shell in each rnd. **13th rnd:** Sl st in next dc and in next sp, ch 3; in same sp make dc, ch 5 and 2 dc. \* Ch 6, in next ch-2 sp make 2 dc, ch 2 and 2 dc, ch 6; in next ch-2 sp make 2 dc, ch 5 and 2 dc. Repeat from \* around; join. **14th rnd:** Sl st in next dc and in next sp, ch 4, 12 tr in ch-5 of shell, \* ch 5, in next ch-2 make 2 dc, ch 2 and 2 dc; ch 5, 13 tr in ch-5 of next shell. Repeat from \* around, ending with ch 5, join.

**15th rnd:** Ch 5 (to count as tr and ch-1), tr in next tr; (ch 1, tr in next tr) 11 times; \* ch 3, shell over next shell, ch 3, tr in next tr; (ch 1, tr in next tr) 12 times. Repeat from \* around; join to 4th st of ch-5 first made. **16th rnd:** Sl st in 1st ch-1 sp, sc in same sp; \* (ch 3, sc in next ch-1 sp) 11 times, ch 3, shell over next shell, ch 3, sc in next ch-1 sp. Repeat from \* around, ending with ch 3, sc in 1st ch-3 loop. **17th rnd:** (Ch 3, sc

in next loop) 10 times, \* ch 3, shell over next shell; (ch 3, sc in next loop) 11 times. Repeat from \* around, ending as in 16th rnd. **18th rnd:** (Ch 3, sc in next loop) 9 times, \* ch 3, in ch-2 of next shell make 2 dc, ch 2, 2 dc, ch 2 and 2 dc. (Ch 3, sc in next loop) 10 times. Repeat from \* around, ending as before.

**19th rnd:** (Ch 3, sc in next loop) 8 times, \* ch 3, in next ch-2 make a shell, ch 2, shell in next ch-2. (Ch 3, sc in next loop) 9 times. Repeat from \* around, ending as before. **20th rnd:** (Ch 3, sc in next loop) 7 times, \* ch 3, shell over next shell, ch 1, shell in next ch-2 sp, ch 1, shell over next shell; (ch 3, sc in next loop) 8 times. Repeat from \* around, ending as before. **21st rnd:** (Ch 3, sc in next loop) 6 times; \* (ch 3, shell over next shell) 3 times; (ch 3, sc in next loop) 7 times. Repeat from \* around, ending as before. **22nd rnd:** (Ch 3, sc in next loop) 5 times, \* ch 3, shell over next shell; (ch 4, shell over next shell) twice; (ch 3, sc in next loop) 6 times. Repeat from \* around.

**23rd rnd:** (Ch 3, sc in next loop) 4 times; \* ch 3, shell over next shell, ch 5; in next shell make 2 dc, ch 5 and 2 dc; ch 5, shell over next shell; (ch 3, sc in next loop) 5 times. Repeat from \* around. **24th rnd:** (Ch 3, sc in next loop) 3 times; \* ch 3, shell over next shell, ch 3, 14 tr in next shell, ch 3, shell over next shell; (ch 3, sc in next loop) 4 times. Repeat from \* around. **25th rnd:** (Ch 3, sc in next loop) twice; \* ch 3, shell over next shell, ch 3, tr in next tr; (ch 1, tr in next tr) 13 times; ch 3, shell over next shell; (ch 3, sc in next loop) 3 times. Repeat from \* around.

**26th rnd:** Ch 3, sc in next loop, \* ch 3, shell over next shell; (ch 3, sc in next ch-1 sp) 13 times; ch 3, shell over next shell; (ch 3, sc in next loop) twice. Repeat from \* around. **27th rnd:** \* Ch 4, shell over next shell; (ch 3, sc in next loop) 12 times; ch 3, shell over next shell; ch 4, sc in next loop. Repeat from \* around, ending with ch 4, sl st in 1st sc. Fasten off. **28th row:** Attach thread to ch-2 of next shell of previous rnd, ch 3; make dc, ch 2 and 2 dc in same shell; (ch 3, sc in next loop) 11 times; ch 3, shell over next shell. Ch 3, turn.

**29th row:** Shell over shell; (ch 3, sc in next loop) 10 times; ch 3, shell over next shell; ch 3, turn. Continue in this manner, having 1 ch-3 loop less on each row until 36th row is completed. **37th row:** Shell over shell; (ch 3, sc in next loop) twice; ch 3, shell over shell—1 loop remaining at point. Ch 3, turn. Make shell over shell, ch 4, sc in next loop, ch 4, 2 dc in next shell, ch 1, sl st back in ch-2 of last shell; ch 1, 2 dc where last 2 dc were made. Fasten off. Attach thread to ch-2 of next shell of 27th rnd and complete the next point in same manner. Continue until all 11

points have been worked; then work as follows:

**1st rnd:** Attach thread to tip of one point where shells were joined, ch 3, in same place where ch-3 was joined make dc, ch 2 and 2 dc. \* (Ch 3, shell in next turning ch, between 2 rows) 5 times; ch 2, dc in ch-2 of shell preceding ch-4 (on 27th rnd), holding back the last loop of this dc and next dc on hook; dc in ch-2 of next shell (where thread was attached, to work point); thread over and draw through all loops on hook; (ch 3, shell in turning ch between 2 rows) 5 times; ch 3, shell at tip of next point, where shells were joined. Repeat from \* around. Join last ch-3 to 3rd st of ch-3. **2nd rnd:** Sl st in next dc and in next sp, ch 8, sc in 5th ch from hook (a p made). Dc in same place as sl st, \* ch 3, sc under next ch-3, ch 3; in next shell make dc, p and dc. Repeat from \* 4 more times, ch 3, sc in next dc, ch 3; in next shell make dc, p and dc. Ch 3, sc under next ch-3. Continue thus around. Fasten off.

**PLACE DOILIES (Make 4) . . .** Starting at center ch 12. Join with sl st. **1st rnd:** Ch 3 (to count as dc), 26 dc in ring. Join with sl st in 3rd st of ch-3. **2nd rnd:** Ch 3, dc in same st as sl st, 2 dc in each st around (54 dc). Join. **3rd to 9th rnds incl:** Same as 5th to 11th rnds incl. of centerpiece—18 dc-groups on 3rd rnd. **10th rnd:** Same as 13th rnd of centerpiece, making ch-5 (instead of ch-6) between shells. **11th rnd:** Same as 14th rnd of centerpiece, making ch-4 (instead of ch-5) between shells and tr-groups (9 tr-groups in rnd). Starting with 15th rnd of centerpiece, work as for centerpiece until place doily is completed.

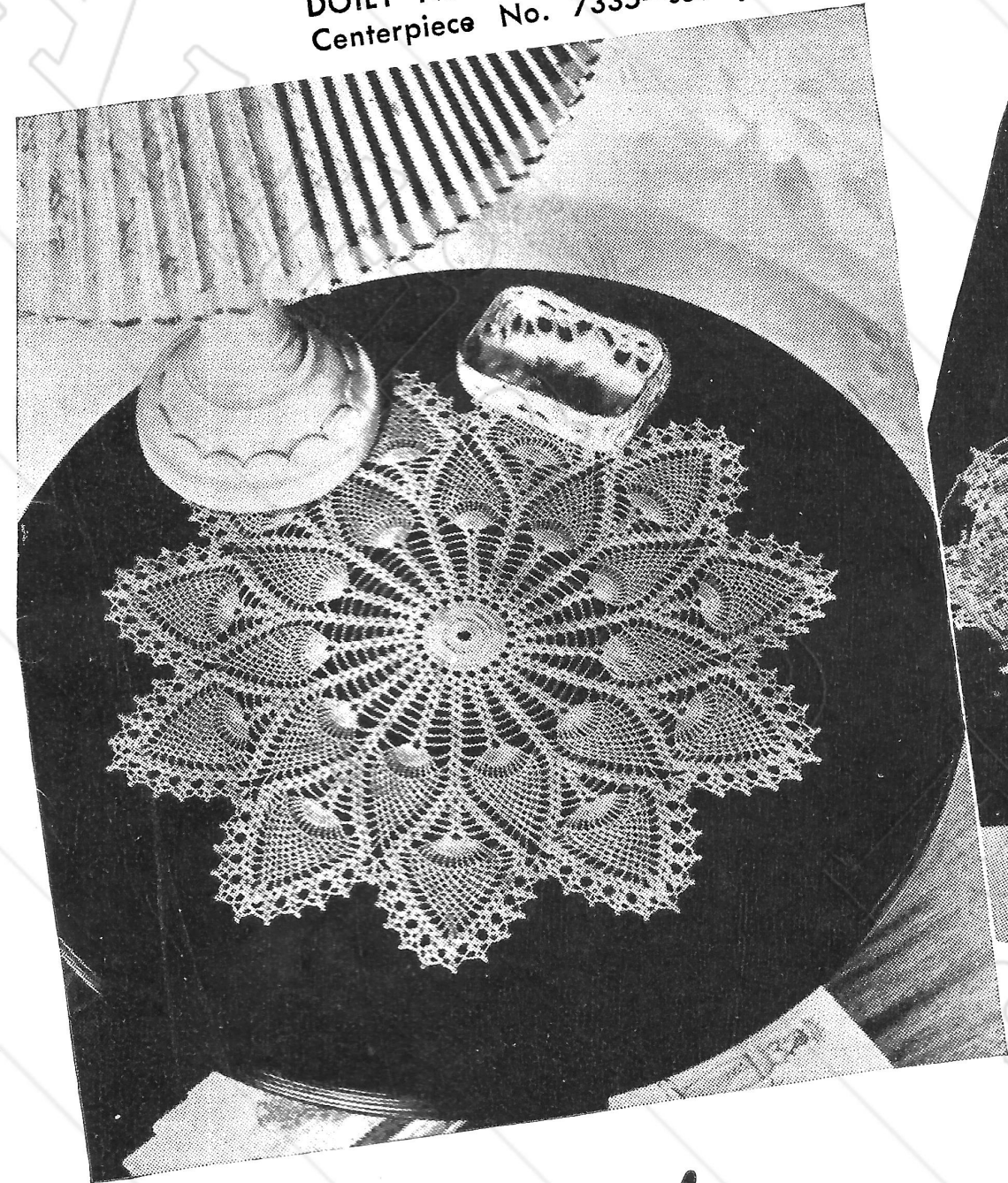
**BREAD and BUTTER PLATE DOILIES (Make 4) . . .** Ch 16, join with sl st. **1st rnd:** Ch 3 (to count as dc), 41 dc in ring. **2nd to 5th rnds incl:** Same as 5th to 8th rnds of centerpiece—14 dc-groups on 2nd rnd. **6th rnd:** Sl st in next dc and in next sp, ch 3, in same sp make dc, ch 5, 2 dc; \* ch 4, shell over next shell, ch 4, in sp of next shell make 2 dc, ch 5 and 2 dc. Repeat from \* around. Join. **7th rnd:** Sl st in next dc and in next sp, ch 4 (to count as tr), 10 tr in ch-5 sp, \* ch 3, shell over shell, ch 3, 11 tr in next ch-5 sp. Repeat from \* around, ending with ch 3, join (7 tr-groups in rnd). **8th rnd:** Ch 5 (to count as tr and ch-1), tr in next tr; (ch 1, tr in next tr) 9 times; \* ch 3, shell over next shell, ch 3, tr in next tr; (ch 1, tr in next tr) 10 times. Repeat from \* around; join to 4th st of ch-5 first made.

**9th rnd:** Same as 16th rnd of centerpiece, making (ch-3, sc in next ch-1 sp) 9 times—instead of 11 times. **10th rnd:** (Ch 3, sc in next loop) 8 times, \* ch 3, shell over next shell; (ch 3, sc in next loop) 9 times. Repeat from \* around, ending with sl st in sc at base of 1st loop made. Fasten off. Work is now done in

Continued on page 21



DOILY No. 7275—Directions same as  
Centerpiece No. 7335—see page 14



LUNCHEON SET No. 7335—See page 14

# Pineapples...

Everyone loves a pineapple design! Early American in inspiration, it has the traditional charm of colonial glass.

## ROYAL PINEAPPLE

No. 7275-M

### MATERIALS:

CLARK'S O.N.T. or J. & P. COATS BEST  
SIX CORD MERCERIZED CROCHET,  
size 30:

#### SMALL BALL:

CLARK'S O.N.T.—4 balls of White or  
Ecrú, or 6 balls of  
any color.

OR

J. & P. COATS—3 balls of White or Ecrú,  
or 4 balls of any  
color.

#### BIG BALL:

CLARK'S O.N.T.—2 balls of White or  
Ecrú.

OR

J. & P. COATS—2 balls of White, Ecrú  
or any color.

Milward's Steel Crochet Hook No. 10  
or 11.

Completed doily measures about 18" in  
diameter.

Work as for Centerpiece of No. 7335  
(see page 14), to 27th rnd incl., but do  
not fasten off. **28th rnd:** Sl st to sp of  
shell, ch 3, dc in same place, ch 2, 2 dc  
in same place, \* (ch 3, sc in next loop)  
11 times; ch 3, shell over next shell,  
ch 3, shell over next shell. Repeat from  
\* around, ending with ch 3, join to top  
of ch-3 first made. **29th rnd:** Sl st to sp

of shell, ch 3, dc in same place, ch 2,  
2 dc in same place, \* (ch 3, sc in next  
loop) 10 times; ch 3, shell over next  
shell, ch 1, shell into next ch-3 sp, ch 1,  
shell over next shell. Repeat from \*  
around. Join.

**30th rnd:** Make a shell, then \* (ch 3,  
sc in next loop) 9 times; (ch 3, shell  
over next shell) 3 times. Repeat from  
\* around. Join. **31st rnd:** Shell, then  
\* (ch 3, sc in next loop) 8 times;  
ch 3, shell over shell, (ch 4, shell  
over next shell) twice. Repeat from  
\* around. Join. **32nd rnd:** Shell,  
\* (ch 3, sc in next loop) 7 times; ch 3,  
shell over shell, ch 5, in next shell  
make 2 dc, ch 6 and 2 dc; ch 5,  
shell over shell. Repeat from \*  
around. **33rd rnd:** Shell, \* (ch 3,  
sc in next loop) 6 times; ch 3,  
shell over shell, ch 3, in ch-6 loop  
make 16 tr, ch 3, shell over  
shell. Repeat from \* around  
(3rd rnd of pineapples  
started). Continue to work  
around until only 1 loop re-  
mains at top of 2nd rnd of  
pineapples. **Next rnd:** Shell,  
\* ch 4, sc in next loop, ch 4,  
shell, ch 4, sc in next loop,

(ch 3, sc in next loop) 11 times; ch 4,  
shell over shell. Repeat from \* around.  
Join. Then work as follows: **1st row:**  
Ch 3, turn. Work shell over last shell,  
ch 4, sc in next loop, (ch 3, sc in next  
loop) 10 times; ch 4, shell over shell.  
Ch 3, turn. **2nd row:** Shell over shell,  
ch 4, sc in next loop, (ch 3, sc in next  
loop) 9 times; ch 4, shell over shell.  
Ch 3, turn. Continue in this manner, hav-  
ing 1 ch-3 loop less on each row until  
1 loop remains at top of pineapple. Ch 3,  
turn. **Next row:** Make shell over shell,  
ch 4, sc in loop, ch 4, 2 dc in next shell,  
ch 1, sl st back in ch-2 of last shell, ch 1,  
2 dc where last 2 dc were made. Fasten  
off. Attach thread to 1st shell of next  
pineapple and complete the point in same  
manner. Continue thus until all 11 points  
have been worked.

ROYAL PINEAPPLE  
No. 7275-M

Fifteen







CHARIOT WHEEL No. 7035



FLOWER BASKET No. 720

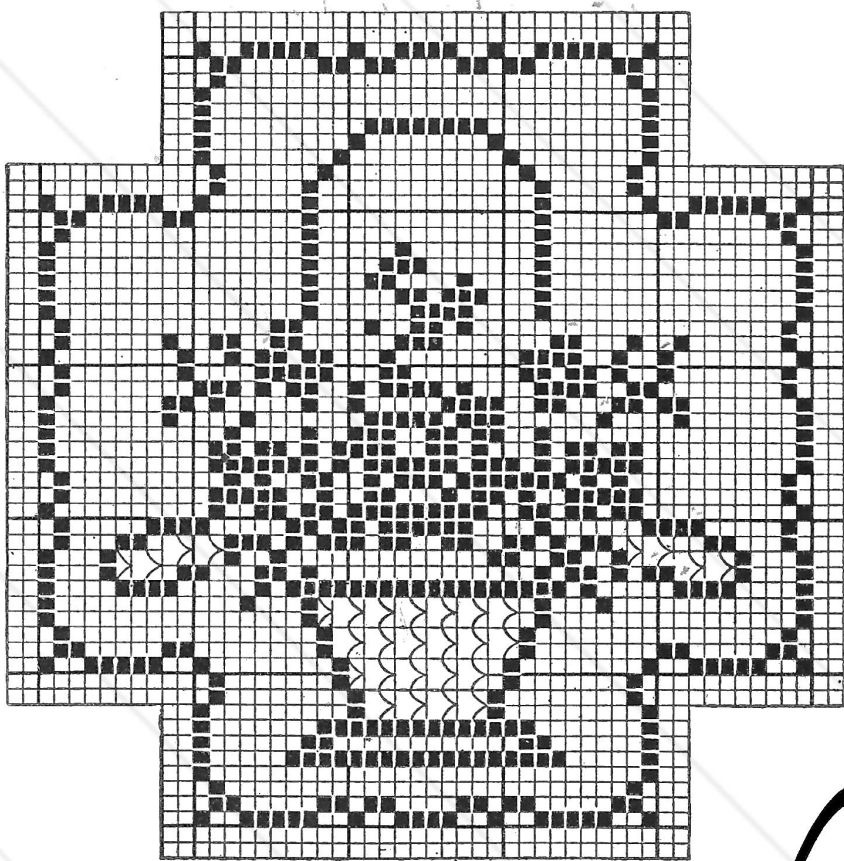
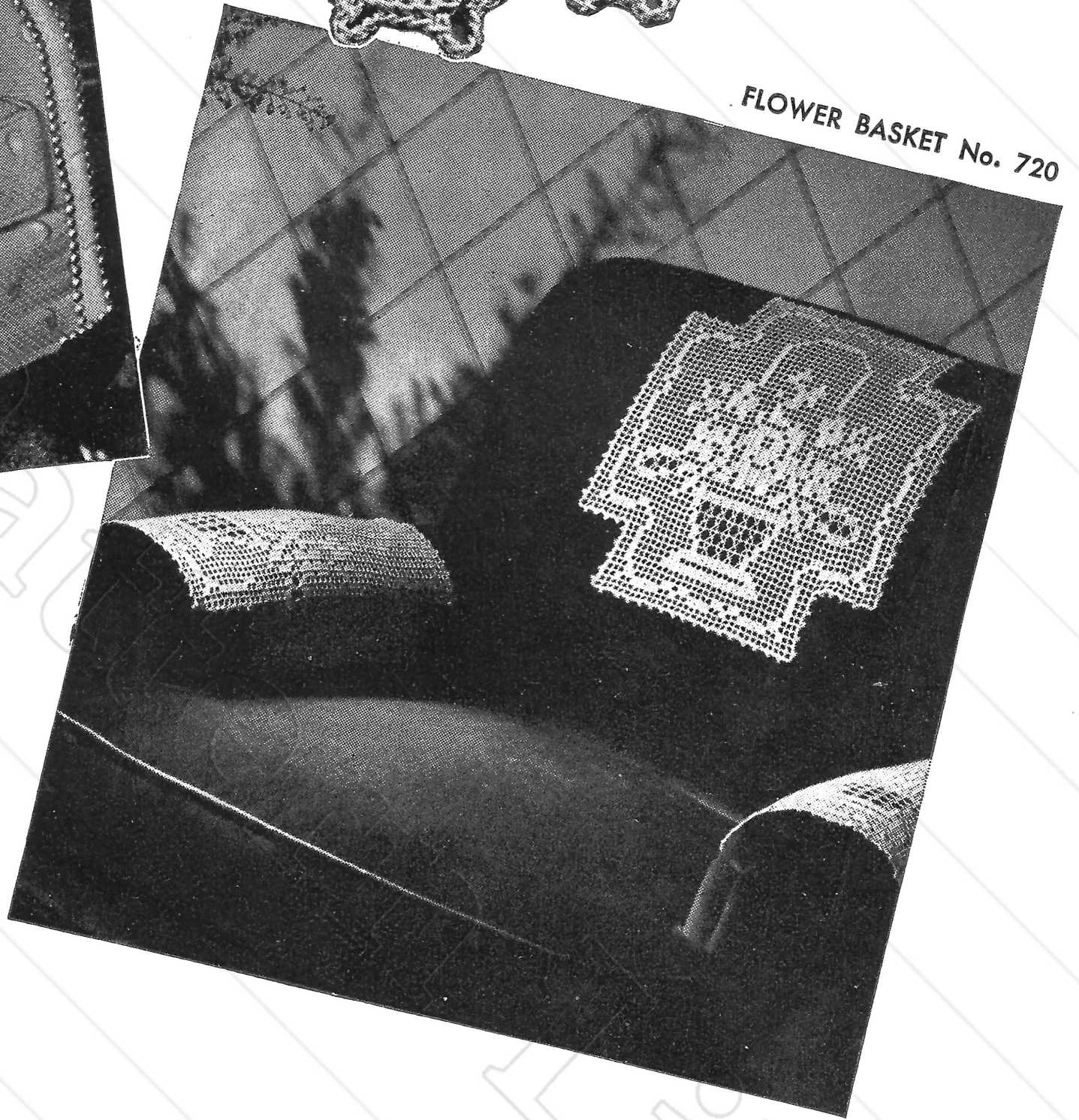


CHART FOR No. 720

BEGIN HERE

## CHARIOT WHEEL No. 7035

### MATERIALS:

CLARK'S O.N.T. or J. & P. COATS BEST SIX CORD MERCERIZED CROCHET, size 10. See thread information on page 22.

Milward's Steel Crochet Hook No. 8.

**GAUGE:** Using the materials recommended, each motif measures about 3" from end of spoke to end of opposite spoke, and requires approximately 12½ yds. of thread.

**RECOMMENDED USES:** Chair sets, runners, luncheon sets, centerpieces, tablecloths.

**MOTIF . . .** Starting at center, ch 12, join with sl st to form ring. **1st row:** Ch 21

(to measure 1¾"). Sc in 2nd ch from hook and in each ch across (20 sc). Make 1 sc in ring. Ch 1, turn. **2nd row:** Picking up only the back loop of each sc, skip 1st sc, sc in each of next 20 sc. Ch 1, turn. **3rd row:** Picking up only the back loop of each sc, sc in each of next 4 sc, \* ch 5, sc in each of next 4 sc. Repeat from \* across, ending with 4 sc (4 p's made). Make 1 sc in ring. This completes 1st spoke. Do not break off but continue for 2nd spoke.

**Second Spoke . . . 1st row:** Ch 20, drop loop from hook, insert hook in 2nd p from ring and draw dropped loop through. Sc in each st of ch-20 (20 sc). Make 1 sc in ring. Ch 1, turn. Repeat

2nd and 3rd rows of 1st spoke once. Then make 4 more spokes same as 2nd spoke (6 in all), but while making the 3rd p of the 6th spoke, attach to 1st spoke by making ch 2, sl st in end sc of 1st spoke, ch 2, and continue back on 6th spoke as usual. Fasten and break off. This completes motif.

**Joining . . .** Place motifs in position as in illustration, and pin ends of spokes together. Then sew them together on wrong side with over-and-over stitches.

Chair set requires 28 motifs (rows of 6 motifs and 5 motifs alternately). Arm piece requires 13 motifs (a row of 5 motifs for center and a row of 4 motifs along each side of center row).



# OLD AND NEW FAVORITES TO CROCHET

## FLOWER BASKET

No. 720

### MATERIALS:

J. & P. COATS KNIT-CRO-SHEEN,  
2 balls of White or Ecru, or 3 balls of  
any color.

Milward's Steel Crochet Hook No. 7.

**GAUGE:** All 3 pieces measure 13" x  
16".

**NOTE:** The design is worked from the  
side across and not from the bottom. In

the directions 1 sp refers to 1 dc, ch 2,  
1 dc; in making a block, substitute 2 dc  
for the ch-2. To make the curved meshes  
that form the basket part of the design,  
make ch 3, 1 sc, ch 3.

**CHAIR BACK . . .** To begin, ch 110.  
**1st row:** Starting in the 8th ch from  
hook, make a row of sps (35 sps). **2nd  
row:** Make 35 sps. **3rd row:** Make 2 sps,  
1 bl, 2 sps, 5 bls, 2 sps, 1 bl, 2 sps, 5 bls,  
2 sps, 1 bl, 2 sps, 5 bls, 2 sps, 1 bl,  
2 sps. **4th row:** Make 3 sps, 2 bls, 5 sps,  
2 bls, 1 sp, 2 bls, 5 sps, 2 bls, 1 sp, 2 bls,  
5 sps, 2 bls, 3 sps. **5th row:** Make 3 sps,

1 bl, 27 sps, 1 bl, 3 sps. **6th row:** Make  
2 sps, 1 bl, 29 sps, 1 bl, 2 sps. **7th row:**  
Make 2 sps, 1 bl, 5 sps, 2 bls, 22 sps,  
1 bl, 2 sps. **8th row:** 2 sps, 1 bl, 21 sps,  
1 bl; make ch 3, skip 2 dc; make 1 sc  
in next dc. Make ch 3, skip 2 dc, make  
1 bl, 4 sps, 1 bl, 2 sps. **9th row:** Make  
2 sps, 1 bl, 4 sps, 1 bl, ch 5, bl in bl,  
21 sps, 1 bl, 2 sps. From this point it  
will be easy enough to follow chart on  
page 16. Finish outer edge with sc and a  
ch-3 p over every other dc.

**ARM PIECES . . .** Work exactly as for  
chair back.

## PINE CONE No. 6025

*Continued from page 12*

3rd rnd, make a d tr in 1st dc of next  
3-dc group, ch 3, 6 dc in sp under  
d tr-bar just made (another 7-dc group).  
Repeat from \* around (8 squares in all).  
Join with sl st to base of turning ch of  
1st square, sl st in next 2 ch sts (this  
brings work to base of 2nd dc-row of  
square). **5th rnd:** \* Ch 5, sc at top of  
same dc, ch 5, sc in top of turning ch  
at corner of square, ch 5, skip next dc  
on other side of square, make sc in next  
dc, ch 5, skip 1 dc, sc in next dc, ch 5, sc  
in top of turning ch of 1st row of next  
square (this is base of 2nd dc-row of  
square). Repeat from \* around, joining  
last ch-5 at base of 1st loop. **6th rnd:**  
Sl st to center ch of loop, \* ch 5, sc in  
next loop. Repeat from \* around, join-  
ing last ch-5 to base of 1st loop. **7th  
rnd:** Sl st to center ch of loop, sc in  
same loop; \* in next loop make: 2 dc,  
2 tr, ch 3, 2 tr and 2 dc; sc in next loop,  
thus making a corner. (Ch 5, sc in next  
loop) 8 times. Repeat from \* around,  
ending with ch 2, dc in 1st sc, to form  
last loop.

**8th rnd:** \* Dc in next 2 dc, dc in next  
2 tr; in ch-3 sp make 3 dc, ch 3 and  
3 dc; dc in next 2 tr, dc in next 2 dc, sc in  
next loop; (ch 5, sc in next loop) 7  
times. Repeat from \* around, ending  
with ch 2, dc in dc at end of previous  
rnd, for last loop. **9th rnd:** \* Dc in next  
7 dc, in corner ch-3 make 3 dc, ch 3 and  
3 dc; dc in next 7 dc, sc in next loop,  
make 6 ch-5 loops. Repeat from \* around,  
ending as before. **10th and 11th rnds:**  
Like 9th rnd, having 3 more dc in each  
group and 1 loop less on each side, on  
each rnd—do not count last dc of last  
loop of previous rnd in 1st dc-group of  
following rnd. **12th rnd:** Like previous  
rnd, ending with ch 5, sc in dc of last  
loop of previous rnd. **13th rnd:** \* Sc  
in 1st dc of next group; (ch 5, skip  
1 dc, sc in next dc) 8 times, ch 5, sc in  
corner sp, ch 5, skip 2 dc, sc in next dc;  
(ch 5, skip 1 dc, sc in next dc) 8 times,

ch 2, 5 dc in each of next 3 loops, ch 2.  
Repeat from \* around, sl st in sc at base  
of 1st loop. **14th rnd:** Sl st in next 3 ch,  
sc in loop; \* (ch 5, sc in next loop)  
17 times; ch 2, dc in next 15 dc, ch 2,  
sc in ch-5 loop. Repeat from \* around,  
ending with ch 2, sl st in sc at base of  
1st loop. **15th rnd:** Sl st to center of  
loop, sc in loop, \*\* (ch 5, sc in next  
loop) 16 times; ch 2, \* make dc in next  
3 dc, holding back on hook last loop of  
each dc, thread over and draw through  
all loops at once (a cluster), ch 5. Re-  
peat from \* 3 more times, make another  
cluster, ch 2, sc in next loop. Then repeat  
from \*\* around, ending with ch 2, sl st  
in sc at base of 1st loop. Fasten off.

**SECOND BLOCK . . .** Work as for 1st  
block to 14th rnd incl. **15th rnd:** Make  
1st 9 loops as on 1st block, ch 2, sl st  
in corresponding loop on previous block  
(always be sure to keep blocks right side  
up), ch 2, sc in next loop on block in  
work, ch 2, sl st in next corresponding  
loop on 1st block, ch 2, sc in next loop  
on block in work (2 ch-5 loops joined).  
Ch 2 and continue thus until 7 joined  
loops are made, ch 2, cluster over next  
3 dc, \* ch 2, sl st in ch-5 between next  
2 clusters on 1st block, ch 2, cluster over  
next 3 dc on block in work. Repeat from  
\* to last cluster incl; ch 2, sc in next  
loop on block in work, ch 2, sl st in next  
corresponding loop of 1st block. Con-  
tinue thus until 7 loops in all have been  
joined following clusters. Complete rnd  
as for 1st block (no more joinings).

Make necessary number of blocks, join-  
ing at all adjacent sides in same manner  
as 2nd block was joined to 1st (8 loops  
in all remain free between joinings for  
fill-in lace to be made later).

**FILL-IN LACE . . .** Fill in all spaces  
between squares as follows: Ch 4, join

with sl st to form ring, ch 4, sl st in  
center ch of a free loop at corner (in  
space between joinings), \* ch 4, sc in  
ring, ch 4, sl st in center ch of next free  
loop. Repeat from \* until the 8 free  
loops are joined to center; ending with  
sc in ring, join. Fasten off.

## PINWHEEL No. 7064

*Continued from page 7*

Make necessary number of motifs,  
joining at all adjacent sides as 2nd motif  
was joined to 1st (where 4 corners meet,  
join 3rd and 4th corners to joining of  
other corners).

**EDGING . . . 1st rnd:** Attach thread to  
ch-7 loop just before corner, sc in same  
loop, ch 11; in corner loop make sc,  
ch 15 and sc. \* Ch 11, sc in next loop.  
Repeat from \* around, making a ch-15  
loop at each corner as before. Join last  
ch-11 with sl st to 1st sc. **2nd rnd:** Sl st  
in next 3 ch of next loop, 5 sc in same  
loop, ch 7; in corner loop make dc, ch 3  
and dc; ch 7; \* 5 sc in next loop, ch 5.  
In next loop make dc, ch 3 and dc; ch 5.  
Repeat from \* around, making corners  
as before. Join last ch-5 to 1st sc made.  
**3rd rnd:** Sc in next 4 sc, ch 6, skip 5 ch,  
sc in next ch, ch 3. In corner ch-3 make  
dc, ch 3 and dc; ch 3, skip 1 ch, sc in  
next ch. \* Ch 6, sc in next 4 sc, ch 6;  
in next ch-3 (between 2 dc) make dc,  
ch 3 and dc. Repeat from \* around, mak-  
ing corners as before; join. **4th rnd:** Sc  
in next 3 sc, ch 5, sc in next sc, ch 5;  
in corner ch-3 make dc, ch 3 and dc;  
ch 5, sc in next sc. \* Ch 5, sc in next  
3 sc, ch 5; in ch-3 (between 2 dc) make  
dc, ch 3 and dc. Repeat from \* around,  
making corners as before; join. **5th rnd:**  
Sc in next sc, ch 6, sc in next sc, ch 6.  
In corner ch-3 make 4 dc, ch 5 and 4 dc;  
ch 6, sc in next sc, ch 6, sc in center sc  
of 3-sc group. \* Ch 7; in ch-3 (between  
2 dc) make 4 dc, ch 5 and 4 dc. Ch 7,  
sc in center sc of next 3-sc group. Re-  
peat from \* around. Fasten off.

### USE:

**CLARK'S O.N.T. or J. & P. COATS  
BEST SIX CORD  
MERCERIZED CROCHET**



PINWHEEL POPCORN  
No. 682

## Popcorn Bedspreads

Four popcorn designs to delight the crochet fancier. Ever popular, these designs have an authentic heirloom quality.

### PINWHEEL POPCORN

No. 682

#### MATERIALS:

J. & P. COATS BEDSPREAD COTTON.

*See thread information on page 22.*

Milward's Steel Crochet Hook No. 8 or 9.

**GAUGE:** Using the materials recommended, each motif measures 6" across, from side to side, and requires about 70 yds. of thread. Allow about 3 or 4 balls for bedspread fringe.

**MOTIF . . .** Starting at center, ch 12, join with sl st. **1st rnd:** Ch 3, 23 dc in ring. Join to 3rd st of ch-3. **2nd rnd:** Ch 3, 4 dc in same place as sl st; drop st from hook, insert hook back in 3rd st of ch-3 first made and draw loop through the one on hook (a pc st). \* Ch 5, skip 2 dc, dc in next dc, ch 3,

OCTAGON POPCORN  
No. 213

IRISH CROCHET  
POPCORN  
No. 60



5 dc in next dc; drop st from hook, insert hook back in last ch made and draw loop through the one on hook (a pc st). Repeat from \* around, ending with ch 2, sl st at tip of first pc st made. **3rd rnd:** Sl st in ch-5 sp, ch 3 and complete a pc st; \* ch 2, a pc st, ch 5, dc in next sp, ch 2, a pc st. Repeat from \* around, ending with ch 2, sl st at tip of 1st pc st made. **4th rnd:** Sl st in next sp (between pc sts), ch 3 and complete a pc st; \* ch 2, in next ch-5 sp make 2 pc sts with ch-2 between; ch 5, dc in next sp, ch 2, pc st in sp between 2 pc sts. Repeat from \* around, ending as before. **5th and 6th rnds:** Same as 4th rnd, making pc sts between pc sts of previous rnd and 2 pc sts in ch-5 sp, always making ch-2 between pc sts (4 pc sts in each group on 5th rnd; 5 pc sts in each group on 6th rnd). **7th rnd:** Sl st in next sp (between 1st 2 pc sts), ch 3 and complete a pc st; \* (ch 2, pc st between next 2 pc sts) 3 times; ch 3, dc at tip of next pc st, ch 3, dc in ch-5 sp, ch 3, dc in next sp, ch 2, pc st between next 2 pc sts. Repeat from \* around. Join. **8th rnd:** \* 3 pc sts between pc sts of previous rnd, with ch-2 between; ch 3, dc at tip of next pc st; (ch 3, dc in next sp) 4 times; ch 2 and repeat from \* around. Join. **9th rnd:** \* 2 pc sts between pc sts of previous rnd, with ch-2 between; ch 3, dc at tip of next pc st; (ch 3, dc in next sp) 6 times, ch 2. Repeat from \* around. Join. **10th rnd:** Sl st in sp (between pc sts), ch 3 and complete a pc st; \* (ch 3, dc in next sp) 3 times; ch 3, skip next dc and sp; in next dc make 3 tr, ch 3, 3 tr; ch 3, skip next sp and dc; dc in next sp; (ch 3, dc in next sp) twice, ch 2, pc st between pc sts of previous rnd. Repeat from \* around. Join and fasten off.

Make necessary number of motifs and sew together on wrong side with neat over-and-over stitches.

Make fringe all around.

## OCTAGON POPCORN

No. 213 *Illus. on page 18*

### MATERIALS:

J. & P. COATS BEDSPREAD COTTON.

*See thread information on page 22.*

Milward's Steel Crochet Hook No. 6.

**GAUGE:** Using the materials recommended, each block measures about 5" square and requires about 65 yds. of thread.

**BLOCK . . .** To begin, ch 8, join with sl st to form ring.

**1st rnd:** Ch 6, 7 dc in ring with ch 3 between each dc. Ch 3, join in 3rd st of ch-6. **2nd rnd:** Ch 3, 4 dc over each ch-3 and 1 dc in every dc; join in 3rd st of ch-3. **3rd rnd:** Ch 3, 1 dc in same st from which ch-3 was started. 1 dc in each of next 3 dc (catching the hook in back loop only throughout block), \* ch 2, skip 1 dc, 2 dc in next dc, 1 dc in each of next 3 dc. Repeat from \* until there are 8 groups of dc. Ch 2 and join with sl st in 3rd ch of ch-3 of previous rnd. **4th rnd:** Ch 3, 1 dc in same st from which ch-3 was started. \* 1 dc in next dc, 1 popcorn st as follows: ch 1, 5 dc in next dc, drop st from hook, in-

sert hook back in ch-1, pick up dropped loop and draw it through st on hook. 1 dc in next dc, 2 dc in next dc. Ch 3, skip ch-2 of preceding rnd, 2 dc in next dc. Repeat from \* until 8 groups are made; then ch 3 and join in 3rd st of ch-3 of previous rnd.

**5th rnd:** Ch 3, 1 dc in same st from which ch-3 was started, \* dc in next 5 dc, 2 dc in next dc, ch 3, skip ch-3, 2 dc in next dc. Repeat from \* until 8 groups are completed. Then ch 3 and join in 3rd st of ch-3 of previous rnd.

**6th rnd:** Ch 3, 1 dc in same st from which ch-3 was started, \* 1 dc in next dc, 1 popcorn st in next dc, 1 dc in each of next 3 dc, 1 popcorn st, 1 dc in next dc, 2 dc in next dc. Ch 4, skip ch-3, 2 dc in next dc and repeat from \*. Continue for the 8 groups. **7th rnd:** Ch 3, 1 dc in same st from which ch-3 was started, \* dc in next 9 dc, 2 dc in next dc, ch 4, skip ch-4, 2 dc in next dc. Repeat from \*, completing the 8 groups. Ch 4 and join.

**8th rnd:** Ch 3, 1 dc in same st from which ch-3 was started, \* 1 dc in next dc, 1 popcorn st in next dc, dc in next 3 dc, 1 popcorn st in next dc, 1 dc in each of next 3 dc, 1 popcorn st in next dc, 1 dc in next dc, 2 dc in next dc. Ch 5, skip ch-4, 2 dc in next dc. Repeat from \* and complete 8 groups. Ch 5, and join.

**9th rnd:** Ch 3, 1 dc in same st from which ch-3 was started. \* 1 dc in each of next 13 dc, 2 dc in next dc. Ch 5, skip ch-5, 2 dc in next dc, dc in next 11 dc, ch 4 and turn. 1 tr in 4th dc from hook, ch 9, 1 tr in same st, ch 4, skip 4 dc, 1 sl st in next dc, ch 1, turn. 4 sc over ch-4, ch 1, 5 sc over ch-9, ch 4, 5 sc over same ch-loop, ch 1, 4 sc over next ch-4, 1 sl st in the 2 loops of the last dc, dc in next 2 dc, 2 dc in next dc. Ch 5, skip ch-5, 2 dc in next dc. Repeat from \* and complete 8 groups. Entire outer edge of spread should be finished with the scalloped edge. These can be made as the outer block is crocheted.

Make as many blocks as desired and sl st blocks together on wrong side of work across the 17 dc to middle of ch-5. Join scallops with needle and thread, sewing the p's together.

SIX POINTED  
STAR No. 210  
See page 21

## IRISH CROCHET POPCORN

No. 60

*Illus. on page 18*

### MATERIALS:

J. & P. COATS KNIT-CRO-SHEEN.

*See thread information on page 22.*

Milward's Steel Crochet Hook No. 6.

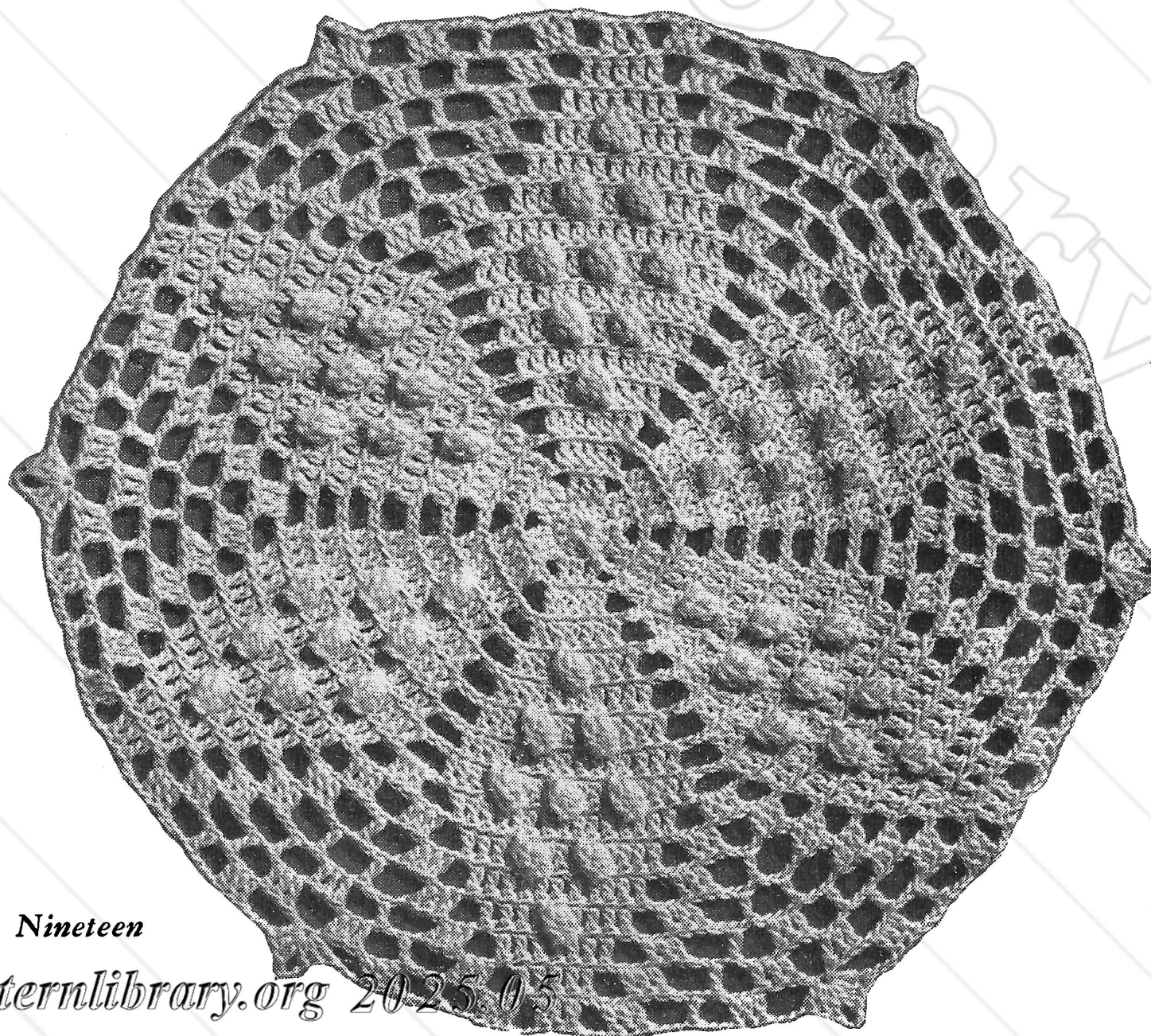
**GAUGE:** Using the materials recommended, each block measures 5" square and requires about 57 yds. of thread. About 3 balls are required for bedspread edging and fringe.

**BLOCK . . .** To begin, ch 8, join with sl st to form ring. **1st rnd:** Ch 1, 12 sc in ring. Join with sl st in 1st sc. **2nd rnd:** \* Ch 5, skip 1 sc, sc in next sc. Repeat from \* until there are 6 loops. Join last ch 5 in sc of 1st loop. **3rd rnd:** Over each ch-5 work sc, half dc, 5 dc, 1 half dc, 1 sc. **4th rnd:** Ch 5, fasten with sc on back of preceding row between two petals, ch 5, fasten as before. Repeat around 6 petals. **5th rnd:** Over each ch-5 work sc, half dc, dc, 5 tr, 1 dc, 1 half dc, 1 sc.

**6th rnd:** Sl st in each of 1st 3 sts of 1st petal made in this row, sc in 1st tr, \* ch 9, sc in 5th tr, ch 4, sc in same st forming a p, ch 7, 1 sc and 1 p in 1st tr of next petal, ch 7, 1 sc and 1 p in 5th tr, ch 9, 1 sc and 1 p in 1st tr of next petal, ch 7, 1 sc and 1 p in 5th tr of same petal, ch 7, 1 sc and 1 p in 1st tr of next petal, and repeat from \* once. **7th rnd:** Sl st to middle of ch-9 loop, \* ch 7, sc in same st from which ch-7 started, ch 7, 1 sc and 1 p in center of next ch-7 loop of preceding row, ch 7, 1 sc and 1 p in center of next ch-7 loop, ch 7, sc in center of ch-9. Repeat from \* 3 times.

**8th rnd:** Sl st to middle of 1st ch-7 loop, ch 8, dc in same st from which ch-8 started, \* ch 6, sc and 1 p in center of ch of preceding rnd, ch 7, 1 sc and 1 p in center of next ch-7, ch 7, 1 sc and 1 p in center of next ch-7, ch 6, dc in center of next ch-7 loop, ch 5, dc in same st from which ch-5 started and repeat from \* 3 times, ending rnd with sl st

*Continued on page 21*



Nineteen



**MATCHING SET****No. 7165***Illus. on page 10***MATERIALS:**

**J. & P. COATS KNIT-CRO-SHEEN,**  
2 balls of a light color and 3 balls of a  
dark color for runner; 2 balls of a  
light color and 2 balls of a dark color  
for chair set.

Milward's Steel Crochet Hook No. 6 or 7.

**GAUGE:** 11 dc make 1"; 5 rows make  
1" (1 square is equivalent to 3 dc).

**RUNNER No. 7165-A**

Completed runner measures 13" x 30"  
(omitting fringe).

Starting at short side, with dark color  
make a chain about 15" long. **1st row:**  
Dc in 4th ch from hook, dc in each ch  
across until there are 141 dc in the row,  
counting turning ch as 1 dc. Cut off re-  
maining chain. Ch 3, turn. **2nd, 3rd and  
4th rows:** Dc in each dc across. Ch 3,  
turn. Do not ch 3 to turn at end of 4th  
row, but leave the last 2 loops of last dc  
on hook, attach light color and draw  
through the 2 loops. Ch 3, turn. **5th row:**  
Holding dark color at top of previous  
row and working over it in order to con-  
ceal it, make dc in each of 2 dc, leaving  
the last 2 loops of 2nd dc on hook;  
\* drop light color, pick up dark color,  
and draw through the 2 loops on hook;

then, holding light color at top of previ-  
ous row and working over it, make dc in  
each of next 3 dc, leaving the last 2 loops  
of last dc on hook. Drop dark color,  
pick up light color and draw through  
the 2 loops on hook; then, holding dark  
color at top of previous row and work-  
ing over it, make dc in each of next  
3 dc, leaving last 2 loops on hook. Re-  
peat from \* across, ending with 3 light  
dc. Ch 3, turn. **6th row:** Dc in each dc  
across, concealing dark color as before.  
Hereafter follow chart for runner, be-  
ginning at 7th row from bottom and  
working until 17 rows are completed,  
concealing unused color as before (count  
3 dc for each square). Break off light  
color and continue with dark color, mak-  
ing dc in each dc across for 3 more rows.  
Hereafter follow chart, starting at the  
21st row from bottom, and work to top  
of chart, but carry light color only as far  
as necessary to continue pattern on next  
row. Then reverse the design by working  
back to the 1st row. Fasten and break off.

**FRINGE . . .** Cut 5 strands of light  
color, each 10" long. Double these  
strands, forming a loop. Pull loop  
through last dc made, and draw loose  
ends of fringe through this loop. Pull  
tight. Make fringe in every 4th dc across  
short side only. Trim ends evenly. Finish  
opposite end to correspond.

**CHAIR SET No. 7165-B**

Completed chair back measures about  
10" x 16", and each arm piece about  
8" x 9", omitting fringe.

**CHAIR BACK . . .** Starting at bottom,  
with dark color make a chain about 18"  
long. **1st row:** Dc in 4th ch from hook,  
dc in each ch across until there are  
171 dc in the row, counting turning ch  
as 1 dc. Cut off remaining chain. Ch 3,  
turn. **2nd and 3rd rows:** Dc in each dc  
across. Ch 3, turn. Do not ch 3 to turn  
at end of 3rd row, but leave the last  
2 loops of last dc on hook, attach light  
color and draw through the 2 loops.  
Ch 3, turn. Hereafter follow chart for  
chair back, starting at the 4th row from  
bottom, and work to top of chart, always  
concealing unused color as in Runner  
7165-A.

**FRINGE . . .** Make fringe across lower  
edge of chair back as for Runner 7165-A.

**ARM PIECES . . .** Starting at bottom,  
ch 83 (to measure about 9"), and follow  
chart for arm piece (working as for chair  
back). Make fringe at lower edge as for  
chair back.

**COLONIAL CHAIR SET****No. 7168** *Continued from page 10*

row, with Ecru make dc in each of next  
3 dc (concealing Blue and Green),  
changing to Green in last dc of Ecru  
group. With Green, make dc in each of  
next 3 dc, carrying Ecru and Blue con-  
cealed, and changing to Ecru in last dc  
of Green group. With Ecru make dc in  
each of next 24 dc, dropping Green after  
carrying it for 3 sts and changing color  
in last dc of Ecru group; 3 Blue dc,  
changing color as before. With Ecru  
make dc in each dc across, increasing  
2 dc at end of row (131 dc). Ch 3, turn.  
Continue in this manner, changing colors  
as indicated by symbols on chart, and  
increasing 2 dc at both ends of each  
row until there are 159 dc in the row.  
When work reaches the shaping at top,  
dec. 2 dc at both ends of each row until  
123 dc remain (to dec., work off 2 dc as  
1 dc twice). Fasten and break off. Make  
another piece, using Ecru only.

**Block pieces.** Cut 2 thicknesses of any  
material to same shape as crocheted  
pieces. Sew the 2 pieces of material to-  
gether, leaving an opening. After filling  
with cotton batting, sew up opening (fin-  
ished pad should be slightly smaller than  
crocheted pieces). Place wrong sides of  
crocheted pieces together, and baste  
edges, leaving an opening of 12" at top.  
Then bind basted edges and both edges  
of opening. Insert pad, and sew edges of  
opening together. Sew two 8" lengths of  
bias binding at each corner of top edge,  
for ties (stitch raw edges together).

**CHAIR BACK . . .** Starting at lower  
edge, with Ecru ch 101. **1st row:** Dc in  
4th ch from hook, dc in each ch across  
(99 dc, counting turning ch as 1 dc).  
Ch 3, turn. Hereafter follow chart for  
chair back, increasing as for chair seat  
until there are 135 dc in the row. When  
work reaches shaping at top, dec. 2 dc  
at both ends of each row until 99 dc  
remain. Break off. Make another piece  
same as this, using only Ecru. Block  
pieces. Finish as for chair seat.

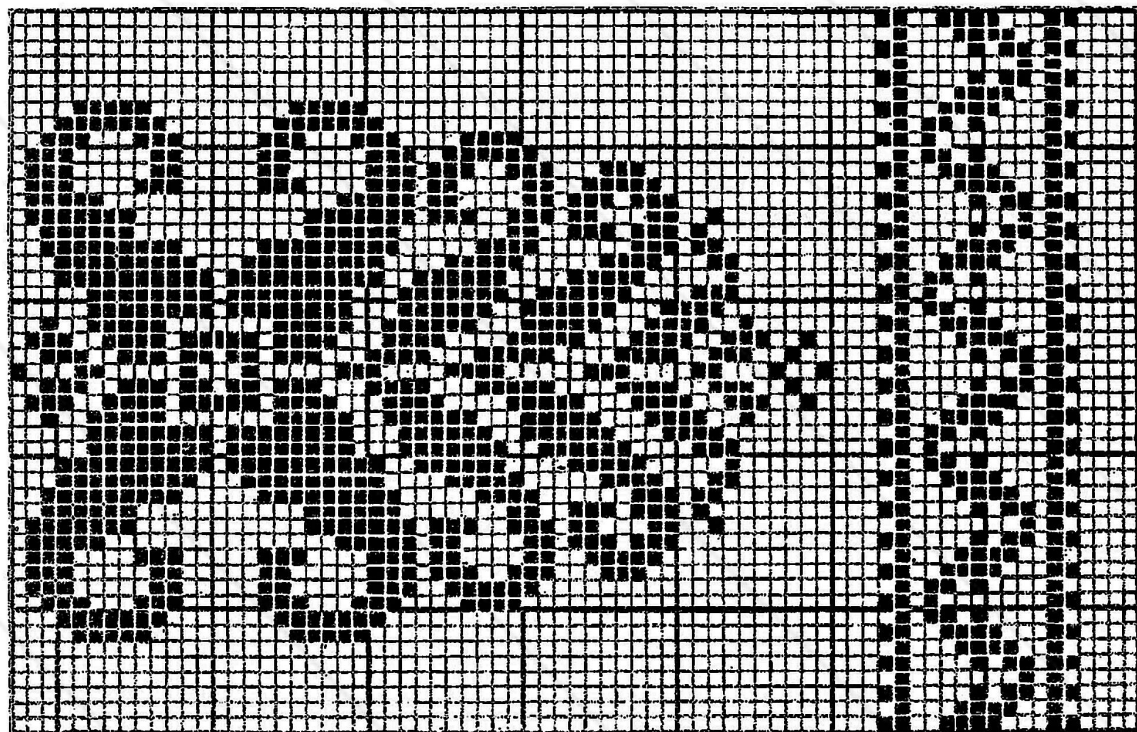


CHART FOR RUNNER

CHARTS FOR  
No. 7165

START HERE

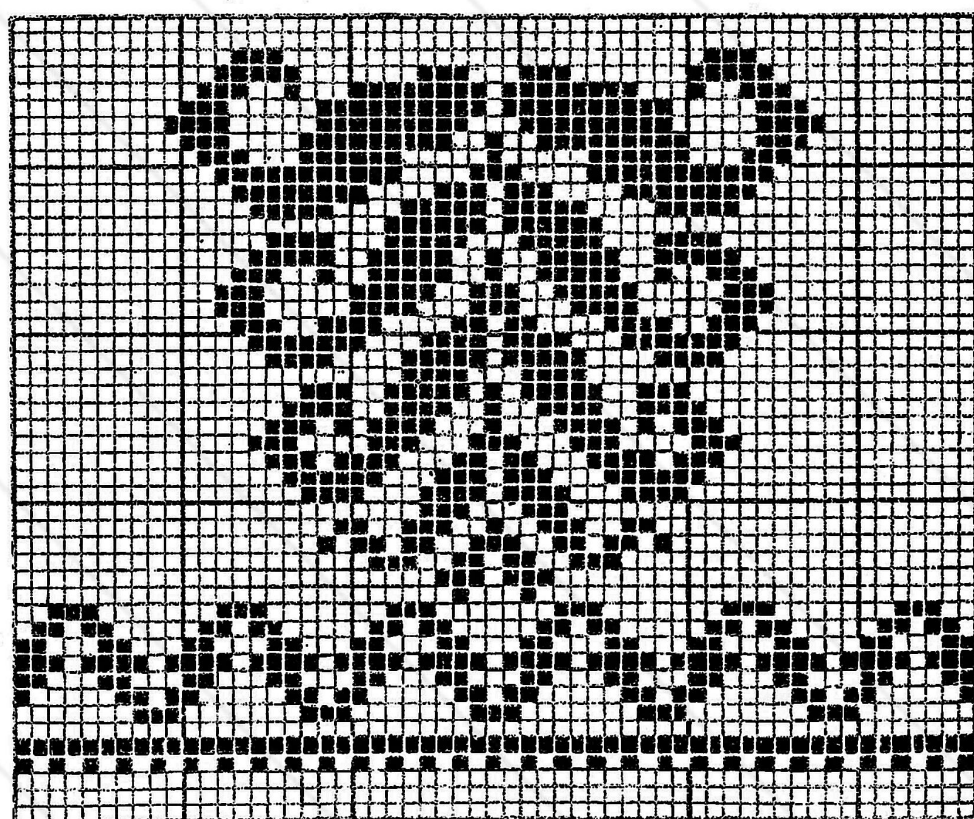


CHART FOR CHAIR BACK

■ — LIGHT  
□ — DARK

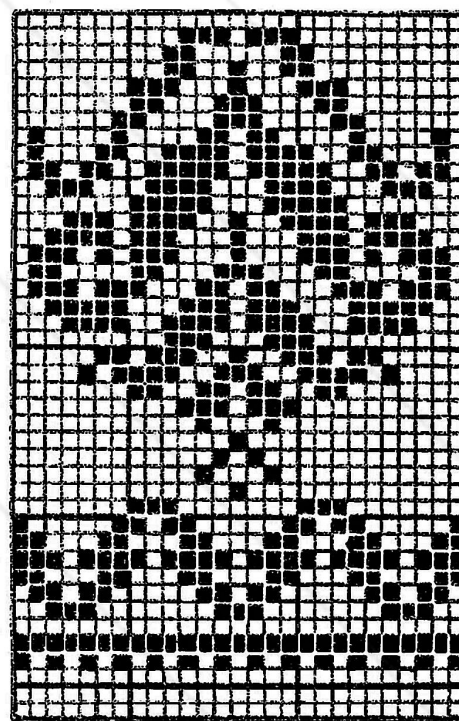


CHART FOR ARM PIECES



**IRISH CROCHET POPCORN****No. 60** *Continued from page 19*

(instead of dc) in 3rd st of ch-8. **9th rnd:** Ch 3, \* dc in each of next 2 sts, ch 5, dc in same st as previous dc, dc in each of the next 2 sts, 1 popcorn st in next st as follows: ch 1, 5 dc in next dc, drop st from hook, insert hook back in ch-1 and draw dropped loop through the one on hook. Dc in each of next 3 sts, ch 6, 1 sc and p in center of ch loop of preceding rnd, ch 7, 1 sc and 1 p in center of next ch loop, ch 6, dc in each of last 3 sts of next ch-6, popcorn st in next dc, dc in next st. Repeat from \* 3 times, ending row with a popcorn st and sl st in 3rd st of ch-3 first made.

**10th rnd:** Ch 3, \* dc in next dc, 1 popcorn st, dc in each of next 3 sts, ch 5, 1 dc in same st for corner. Work in next 12 sts as follows: 2 dc, 1 popcorn st, 5 dc, 1 popcorn st, 3 dc (catching hook in back loop only throughout block), ch 6, 1 sc and 1 p in center of next ch-loop, ch 6, dc in center of next ch-loop, 2 dc, 1 popcorn st, 5 dc, 1 popcorn st, 4 dc. Repeat from \* 3 times, ending rnd by sl st in 3rd st of ch-3 first made. **11th rnd:** Ch 3, \* 4 dc, 1 popcorn st, 3 dc, ch 5, 1 dc in same st for corner. Work across next 18 sts—2 dc, 1 popcorn st, 5 dc, 1 popcorn st, 5 dc, 1 popcorn st, 3 dc. Ch 5, dc in center of next ch-loop, 2 dc, 1 popcorn st, 5 dc, 1 popcorn st, 1 dc and repeat from \* 3 times, ending rnd with popcorn st and sl st in 3rd st of ch-3 first made.

**12th rnd:** Ch 3, dc in each st to corner, ch 5, 1 dc in same st for corner; then 1 dc in each st, making corners as before. Join with sl st in 3rd st of ch-3 first made. Do not fasten off.

Work loops around block as follows: Ch 3, skip 2 sts, sc in next st. Continue around entire block with ch 3 and sc so that there are 18 loops on each side and an additional loop at each corner.

**TO JOIN BLOCKS . . .** Catch with sc on ch-3 nearest the edge, ch 3, catch with sc in same position on 2nd block, ch 3, 1 sc on next ch-3 of 1st block, ch 3, catch on 2nd block and so on along one side.

**OUTER EDGE . . . 1st rnd:** Make ch 7 and sc in alternate ch-3's. **2nd rnd:** Ch 7 and 1 p in each loop.

**FRINGE . . .** For fringe knot 6 strands of cotton into each loop all around bedspread.

**PINEAPPLE LUNCHEON SET****No. 7335** *Continued from page 14*

rows. **11th row:** Attach thread to ch-2 of next shell of previous rnd, ch 3; make dc, ch 2 and 2 dc in same shell; (ch 3, sc in next loop) 8 times; ch 3, shell over next shell. Ch 3, turn. **12th row:** Shell over shell; (ch 3, sc in next loop) 7 times; ch 3, shell over next shell; ch 3, turn. Continue in this manner, having 1 ch-3 loop less on each row until 16th row is completed. **17th row:** Same as 37th row of centerpiece. Fasten off. Attach thread to ch-2 of next shell on 10th rnd and complete the next point in same manner. Continue thus until all 7 points have been worked. Then work as follows:

**1st rnd:** Attach thread to tip of any point where shells were joined, ch 3; in same place where thread was attached make dc, ch 2 and 2 dc. \* (Ch 3, shell in next turning ch) 3 times, ch 2, dc in next turning ch, skip next shell, dc under starting ch of next shell, (ch 3, shell in next turning ch) 3 times, ch 3, shell in tip of point, where shells meet. Repeat from \* around. Join. **2nd rnd:** Sl st in next dc and in next sp, ch 8 (to count as dc and ch-5 for a picot), sc in 5th ch from hook—a p made. Dc in same place as sl st, \* ch 3, sc under next ch-3, ch 3; in next shell make dc, p and dc. Repeat from \* 2 more times, ch 3, sc between next 2 dc, ch 3; in next shell make dc, p and dc. Ch 3, sc under next ch-3. Continue thus around. Join and fasten off.

**GLASS DOILIES (Make 4) . . .** Starting at center, ch 8. Join. **1st rnd:** Ch 3, 19 dc in ring. Join. **2nd rnd:** Ch 3, dc in same place as sl st, \* ch 2, skip 1 dc, 2 dc in next dc. Repeat from \* around, ending with ch 2, sl st in 3rd st of ch-3 first made (10 dc-groups). **3rd rnd:** Sl st in next dc and in next sp, ch 3. In same sp make dc, ch 2 and 2 dc, \* ch 3, shell in next sp. Repeat from \* around, ending with ch 3, sl st in top st of ch-3 first made. **4th rnd:** Ch 3; in same sp make dc, ch 5 and 2 dc, \* ch 4, shell in sp of next shell, ch 4. In sp of next shell make 2 dc, ch 5 and 2 dc. Repeat from \* around, ending with ch 4, sl st in top st of ch-3 first made. **5th rnd:** Same as 7th rnd of bread and butter plate doily (5 tr-groups in rnd). Work remainder of this doily as for bread and butter plate doily. Block all pieces to measurements given.

**MODERN RUSTIC No. 7140***Continued from page 11*

Break off M, and work 2 rows of C dc. Break off.

**CENTER MAT . . .** Starting at short side with C, ch 161 (to measure about 14"). Work exactly as for place mats until piece measures 31½". Break off M, and work 2 rows of C dc. Break off.

**BALLERINA No. 674***Continued from page 13*

points of adjacent motifs, thus leaving 1 point free on each motif between joinings.

**FILL-IN LACE . . .** Ch 10, join to form ring. \* Ch 11, sl st in a free point between joinings; ch 11, sc back in ring. Ch 16, sl st in joining; ch 16, sc in ring. Repeat from \* 3 more times. Join and fasten off. Fill in all spaces between joinings in same manner.

**STAR WHEEL No. 744***Continued from page 13*

motif (thus leaving 2 points free on each motif). To make fill-in lace between the motifs, ch 4, join with sl st to form ring. \*\* Ch 15, sc at joining of 2 motifs, ch 15, sc in center ring, \* ch 9, sc in point of next scallop, ch 9, sc in center ring, repeat from \* once more. Then repeat from \*\* 3 more times. Fasten off.

**SIX POINTED STAR****No. 210***Illus. on page 19***MATERIALS:**

J. & P. COATS KNIT-CRO-SHEEN. See thread information on page 22.

Milward's Steel Crochet Hook No. 5 or 6.

**GAUGE:** Using the materials recommended, each block measures 7½" across and requires about 90 yds. of thread. About 4 balls are required for bedspread fringe.

**BLOCK . . .** *Slight cupping of block, which is unavoidable, will be taken care of by blocking.* Starting at center, ch 4. **1st rnd:** Ch 3, 11 dc in ring. Sl st in 3rd st of ch-3 first made. **2nd rnd:** Ch 3, \* dc in next dc; in next dc make dc, ch 3 and dc. Repeat from \* around, ending with dc at base of ch-3 first made, ch 3, sl st in 3rd st of ch-3. Hereafter pick up only the back loop of each dc. **3rd rnd:** Ch 3, dc in next 2 dc, \* dc in next ch, ch 4, skip 1 ch, dc in next ch, dc in next 3 dc. Repeat from \* around, ending with dc in last ch of previous rnd, sl st in 3rd st of ch-3 first made. **4th rnd:** Ch 3, dc in next 3 dc, \* dc in next ch, ch 4, skip 2 ch, dc in next ch, dc in next 5 dc. Repeat from \* around, ending with dc in last dc of previous rnd, sl st in 3rd st of ch-3 first made. **5th rnd:** Ch 3 (to count as dc), \* in next st make a pc st—to make a pc st, ch 1, make 5 dc in same place, drop loop from hook, insert hook in ch-1 preceding the 5 dc, and draw dropped loop through; dc in next 3 dc, dc in next ch, ch 4, skip 2 ch, dc in next ch, dc in next 3 dc. Repeat from \* around. Join as before to 3rd st of ch-3 first made.

**6th rnd:** Ch 3, \* dc in tip of next pc st, dc in next 4 dc, dc in next ch, ch 4, skip 2 ch, dc in next ch, dc in next 4 dc. Repeat from \* around. Join. **7th rnd:** Ch 3, dc in next 2 dc, pc st in next dc, \* dc in next 3 dc, dc in next ch, ch 4, skip 2 ch, dc in next ch; (dc in next 3 dc, pc st in next dc) twice. Repeat from \* around. Join. **8th rnd:** Ch 3, dc in next 7 sts, \* dc in next ch, ch 4, skip 2 ch, dc in next ch, dc in next 13 sts. Repeat from \* around. Join. **9th rnd:** Ch 3, \* (pc st in next dc, dc in next 3 dc) twice; dc in next ch, ch 4, skip 2 ch, dc in next ch, dc in next 3 dc, pc st in next dc, dc in next 3 dc. Repeat from \* around. Join. **10th rnd:** Ch 3, dc in next 8 sts, \* ch 3, skip 1 dc, 3 dc in next sp, ch 3, skip 1 dc, dc in each of next 15 sts. Repeat from \* around. Join.

**11th rnd:** Ch 3, dc in next 2 dc, \* pc st in next dc, dc in next 4 dc, ch 3, skip 1 dc, dc in next 3 ch, ch 3, skip 3 dc, dc in next 3 ch, ch 3, skip 1 dc, dc in next 4 dc, pc st in next dc, dc in next 3 dc. Repeat from \* around. Join. **12th rnd:** Ch 3, dc in next 6 dc, \* ch 3, skip 1 dc, dc in next 3 ch, ch 3, dc in center st of next ch-3, ch 3, skip 4 sts, dc in next 3 ch, ch 3, skip 1 dc, dc in next 11 dc. Repeat from \* around. Join. **13th rnd:** Ch 3, \* pc st in next dc, dc in next 4 dc, ch 3, skip 1 dc, dc in next 3 ch, ch 3, skip 4 sts, (dc in center st of next ch-3, ch 3) twice; skip 4 sts, dc in

*Continued on page 22**Twenty-one*



WHEEL OF FORTUNE

No. 7288 Continued from page 9

throughout. 3rd rnd: Ch 4, tr in same place as sl st, \* tr in next tr, 2 tr in next tr, ch 7, 2 tr in next tr of 3-tr group. Repeat from \* around. Join last ch-7 to 4th st of ch-4. 4th rnd: Ch 4, tr in same place as sl st, \* tr in next 3 tr, 2 tr in next tr, ch 4, skip 3 ch of ch-7, sc in next ch, ch 3, sc in same place, ch 4, 2 tr in next tr. Repeat from \* around. Join last ch-4 to 4th st of ch-4 first made. Fasten off. This completes motif.

Sew motifs together at tr-groups, on wrong side, picking up a single loop of each tr.

SIX POINTED STAR

No. 210 Continued from page 21

next 3 ch, ch 3, skip 1 dc, dc in next 4 dc. Repeat from \* around. Join. 14th rnd: Ch 3, dc in next 4 dc, \* ch 3, skip 1 dc, dc in next 3 ch, ch 3, dc in center st of next ch-3, ch 3, skip 2 sts, dc in next 3 ch, ch 3, skip 2 sts, dc in center st of next ch-3, ch 3, skip 4 sts, dc in next 3 ch, ch 3, skip 1 dc, dc in next 7 dc. Repeat from \* around. Join.

15th rnd: Ch 3, dc in next 3 dc, \* ch 3, skip 1 dc, dc in next 3 ch, ch 3, skip 4 sts, dc in center st of next ch-3, ch 3, skip 2 sts, dc in next 3 ch, ch 3, skip 3 dc, dc in next 3 ch, ch 3, skip

2 sts, dc in center st of next ch-3, ch 3, skip 4 sts, dc in next 3 ch, ch 3, skip 1 dc, dc in next 5 dc. Repeat from \* around. Join. 16th rnd: Ch 3, dc in next 2 dc, \* ch 3, skip 1 dc, dc in next 3 ch, ch 3, skip 4 sts, dc in center st of next ch-3, ch 3, skip 2 sts, dc in next 3 ch, ch 3, skip 3 dc and 1 ch; in next ch make 3 dc, ch 3 and 3 dc; ch 3, skip 3 dc, dc in next 3 ch, ch 3, skip 2 sts, dc in center st of next ch-3, ch 3, skip 4 sts, dc in next 3 ch, ch 3, skip 1 dc, dc in next 3 dc. Repeat from \* around. Join.

Whip blocks together on wrong side and, when desired size is obtained, make ch-4 loops all around bedspread. Knot 1 fringe in each loop, using 8 strands.

General Information

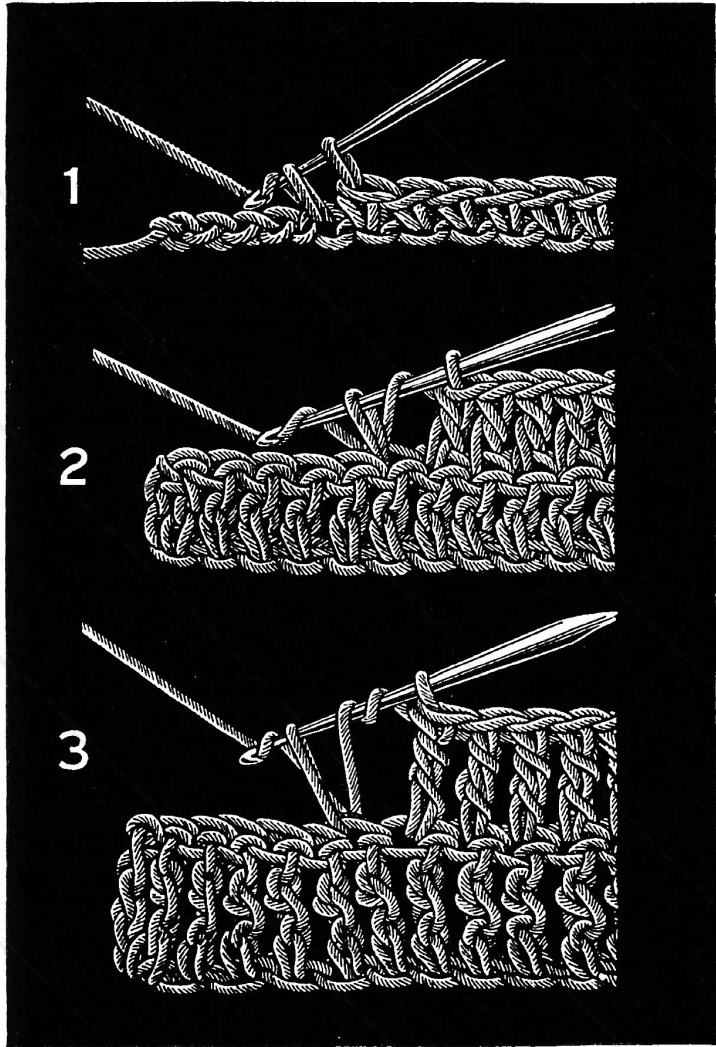
THREAD INFORMATION

Each type of thread is adaptable to a wide variety of uses. If you prefer to use a thread other than that specified, the following chart will be of assistance.

BEDSPREADS	TABLECLOTHS LUNCHEON SETS	CHAIR SETS RUNNERS, DOILIES
CLARK'S O.N.T. OR J. & P. COATS BEST SIX CORD MERCERIZED CROCHET Sizes 10 to 30	Sizes 20 to 50	Sizes 10 to 50
J. & P. COATS KNIT-CRO-SHEEN		
J. & P. COATS BEDSPREAD COTTON CLARK'S O.N.T. MER- CERIZED BEDSPREAD COTTON CLARK'S O.N.T. "BRITA-SHEEN"	CLARK'S BIG BALL MERCERIZED CROCHET, Sizes 20 to 50	CLARK'S O.N.T. PEARL COTTON CLARK'S O.N.T. "BRILLIANT"

MILWARD'S STEEL CROCHET HOOKS

Mercerized Crochet: Size 10 or 20—Hooks No. 7 to 9  
Sizes 30 to 50—Hooks No. 10 to 12  
Knit-Cro-Sheen, Bedspread Cotton, "Brita-Sheen": Hooks No. 6 to 8  
Pearl Cotton: Hooks No. 4 to 7  
"Brilliant": Hooks No. 6 to 8



SIMPLE CROCHET STITCHES

1 . . . Single Crochet (sc): Insert hook under 2 loops of st, draw thread through (2 loops on hook), thread over, draw through both loops on hook.

2 . . . Double Crochet (dc): Thread over, insert hook in st and draw thread through (3 loops on hook); thread over, draw through 2 loops, thread over, draw through 2 remaining loops. Work Half Double Crochet (half dc) like dc, but draw thread through all 3 loops at once.

3 . . . Treble (tr): Thread over twice, insert hook in st and draw thread through (4 loops on hook); thread over and work off 2 loops at a time as for a dc. For a Double Treble (d tr), thread over 3 times; and for a Triple Treble (tr tr), thread over 4 times, working off 2 loops at a time as in the tr.

GAUGE . . . For perfect results your number of stitches and rows should correspond with that in the directions. Before starting your article, make a small sample of the stitch. If your working tension is too tight or too loose, use a finer or coarser needle, to obtain the correct gauge.

BLOCKING DIRECTIONS . . . Using rust-proof pins, pin individual pieces right-side-down on Turkish towels. Press with a hot iron, through a damp cloth. When thoroughly dry, remove pins.

TO LAUNDER COTTON ARTICLES . . . Before laundering, record all important measurements. Use a good neutral soap or soap flakes; make suds in warm water. Squeeze suds through article until it is clean. Rinse thoroughly and wring out. Lay out article on Turkish towels, according to recorded measurements, and pin in place with rust-proof pins. Press through dry cloth. When thoroughly dry, remove pins. Press lightly where necessary.

IMPORTANT . . . Be sure to buy at one time sufficient material of the same dye lot to complete the article you wish to make, as it is impossible to avoid slight variations in colors in different dye lots.

ABBREVIATIONS FOR CROCHET

Chain.....ch  
Single Crochet.....sc  
Half Double Crochet.....half dc  
Double Crochet.....dc  
Treble.....tr  
Double Treble.....d tr  
Triple Treble.....tr tr  
Slip Stitch.....sl st  
Popcorn Stitch.....pc st  
Block.....bl  
Space.....sp  
Picot.....p  
Stitch.....st  
Round.....rnd  
Inclusive.....incl.  
Increase.....inc.  
Decrease.....dec.

\*(asterisk) When this symbol appears, continue working until instructions refer you back to this symbol.



# Here They Come!

## NEW CROCHET BOOKS ARE ROLLING OFF THE PRESS

CROCHET FASHIONS  
FOR SMALL FRY . . . No. 175

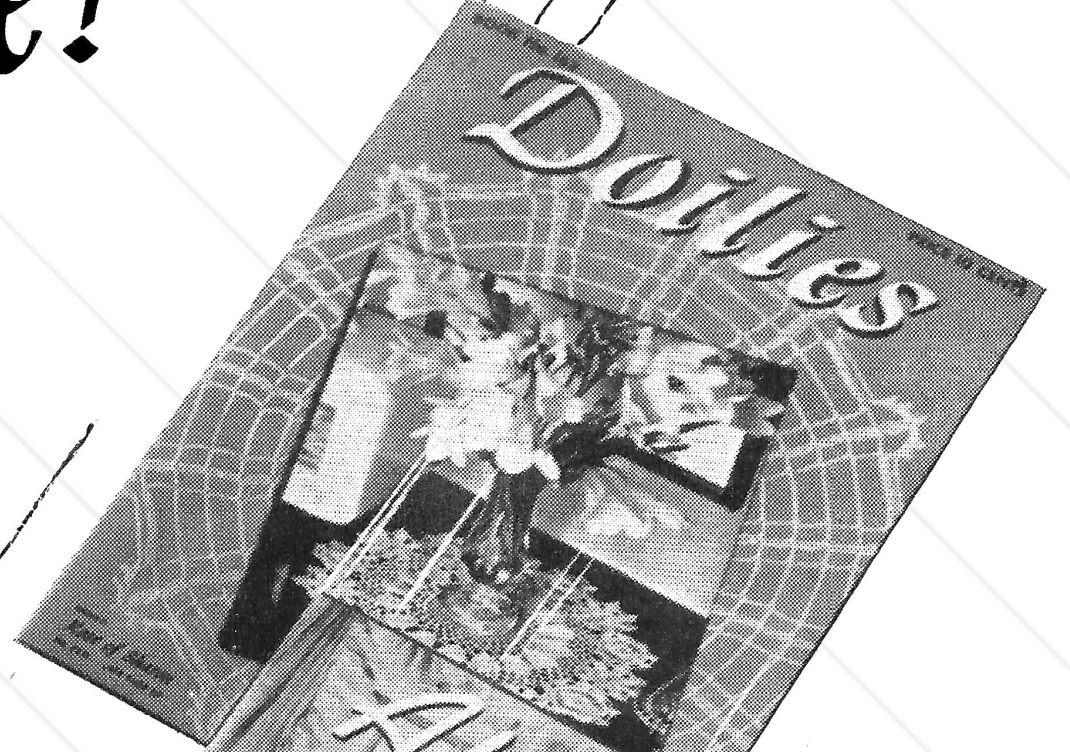
SHAGGY AND CROCHETED  
RUGS . . . No. 177

WOOLIES FOR BABIES . . . No. 178

CROCHETED TABLECLOTHS AND  
LUNCHEON SETS . . . No. 179

CHAIR SETS . . . No. 181

TATTING . . . No. 183



*A* whole new series of crochet books is making crochet history—and crocheters the country over are sitting up and taking notice of these sprightly new books. These books put crochet decidedly in fashion. They show you how you can make charming things for yourself, decorative articles for your home—books no true lover of crochet would want to be without! You'll want the whole series and you can find them at your favorite art goods department—they're 10 cents a copy.



*Old and New*

Creative Commons 4.0 NC SA BY FREE DISTRIBUTION ONLY - BOOK NO. 173  
PRICE 10 CENTS

# FAVORITES

*Crochet Designs*

NATION-WIDE FAVORITES  
REPEATED BY REQUEST

for  
TABLECLOTHS • BEDSPREADS  
LUNCHEON SETS  
CHAIR SETS • DOILIES

