

The Antique Pattern Library

For more information, please see our website at: <http://www.antiquepatternlibrary.org>



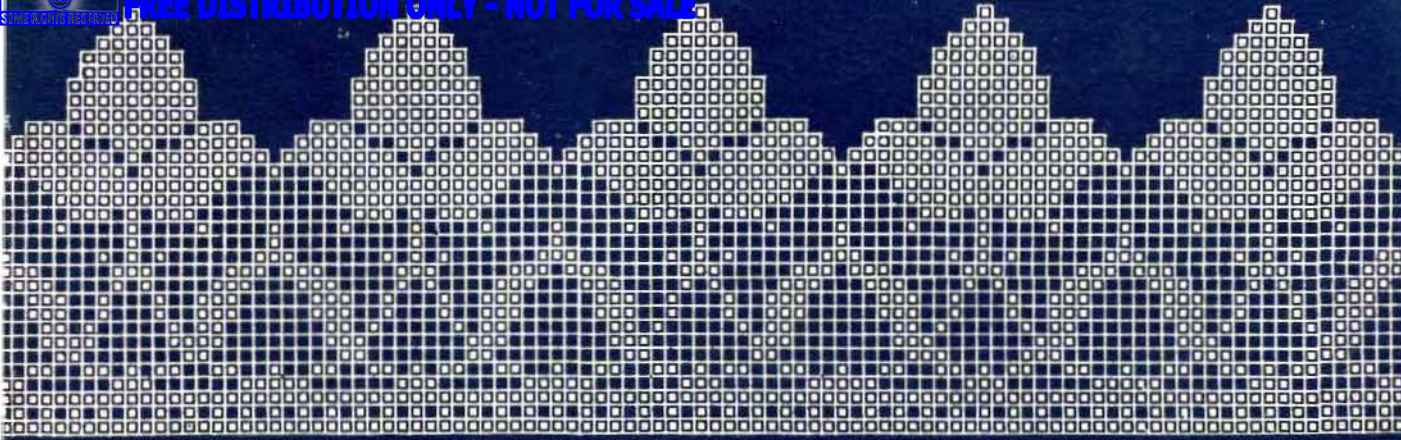
This is a scan of an antique book that is, to the best of our knowledge, in the public domain. The scan itself has been photo-edited for readability, and is licensed under the **Creative Commons** Attribution-NonCommercial-ShareAlike License. To view a copy of this license, visit <http://creativecommons.org/licenses/by-nc-sa/2.5/> or send a letter to Creative Commons, 559 Nathan Abbott Way, Stanford, California 94305, USA.

You may share copies or printouts of this scan freely. You may not sell copies or printouts.

Donated by

anonymous

11/2010

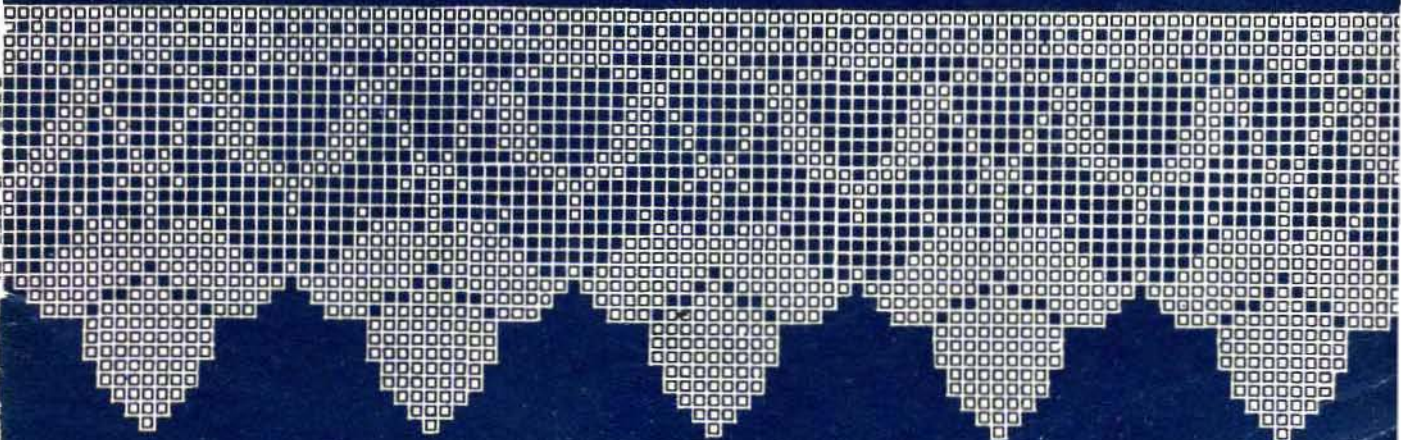


FILET CROCHET

BOOK No 4



PUBLISHED BY
CORA KIRCHMAIER



THE NEW FILET CROCHET BOOK

NUMBER FOUR

ORIGINAL DESIGNS WHICH MAY BE USED ALSO FOR
CROSS-STITCH AND BEADWORK, WITH PATTERNS
.. .. REPRESENTED IN A NEW WAY

BY
HUGO W. KIRCHMAIER

Preface and Suggestions for Making Up Designs by
CORA KIRCHMAIER

Price, 25 Cents

Published and Copyrighted, 1915, by Cora Kirchmaier, Toledo, Ohio



THE "LOVE BIRD" PILLOW

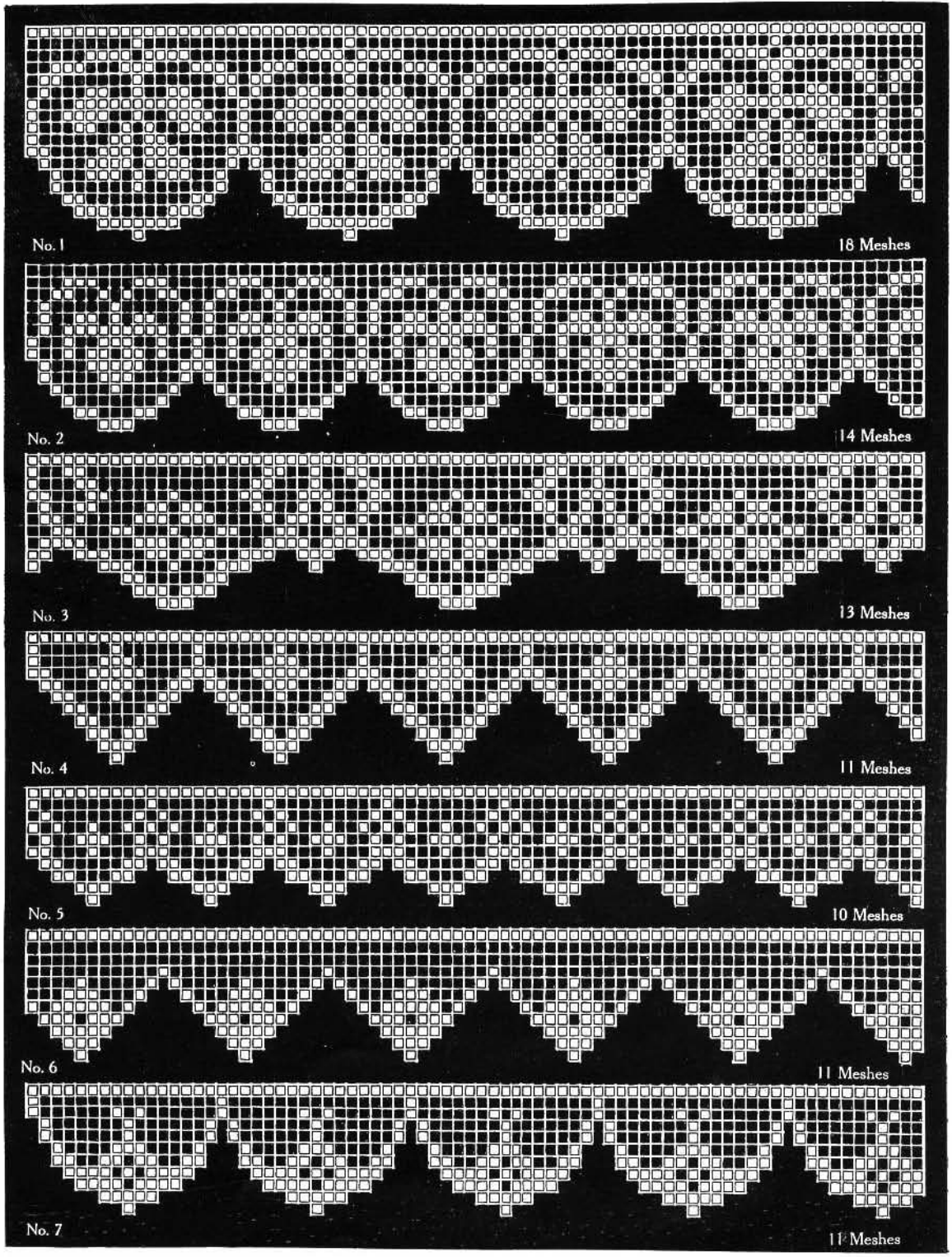


PLATE I

PREFACE.

The increasing demand for handsome edgings and insertions in Filet Crochet has prompted us to add another book of Filet to our list of publications.

In this book we have adhered to the same method of outlining each square in black, as in our Filet Books Nos. 1 and 2, to facilitate the counting. This, together with the simplicity of the work, enables novices to copy the designs with little effort.

These novel and artistic designs are strictly original, can be used in numerous ways, and are not confined to the one application in which they appear. They should delight the most fastidious needleworker.

GENERAL INSTRUCTIONS

for working Filet Crochet, as well as working instructions for designs having uneven edges, can be found on Pages 6 and 8 of Filet Crochet Book No. 2, published by Cora Kirchmaier.

TABLE OF SIZES.

Size of Thread	Size of Hook	Number of Meshes to an inch
No. 3	8	three
" 5	9	four
" 10	10	four and one-half
" 20	11	five
" 30	12	six
" 50	13	seven
" 100	14	eight
" 150	14	nine

ABBREVIATIONS.

ch st or **ch**, for chain stitch or chain.
d, for double crochet.
t, for treble crochet.
dt, for double treble.

tt, for triple treble.
sl st, for slip stitch.
o, for open meshes.
s, for solid meshes.

THE "SHOO FLY" COVER.

For a plate of sandwiches, cookies, bonbons, or other dainties to be served at a porch luncheon or lawn party, and other places where the pesky little flies will gather to hunt the sweets, this useful cover will be indispensable. It is very unique in design, easily executed, and the idea entirely new.

LUNCHEON CLOTH.

The Iris Design No. 20, Plate V, forms the attractive corner of this luncheon cloth. The crochet design, executed in No. 30 crochet cotton, is neatly buttonholed on to the linen, and a lace edge, No. 49, Plate XI, forms the artistic finish. A handsome monogram embroidered in one corner would give it a touch of individuality. This little edge done in No. 40 or No. 50 crochet cotton could be used around the edge of tea napkins, and an embroidered monogram about one inch high in one corner would complete a handsome luncheon set.

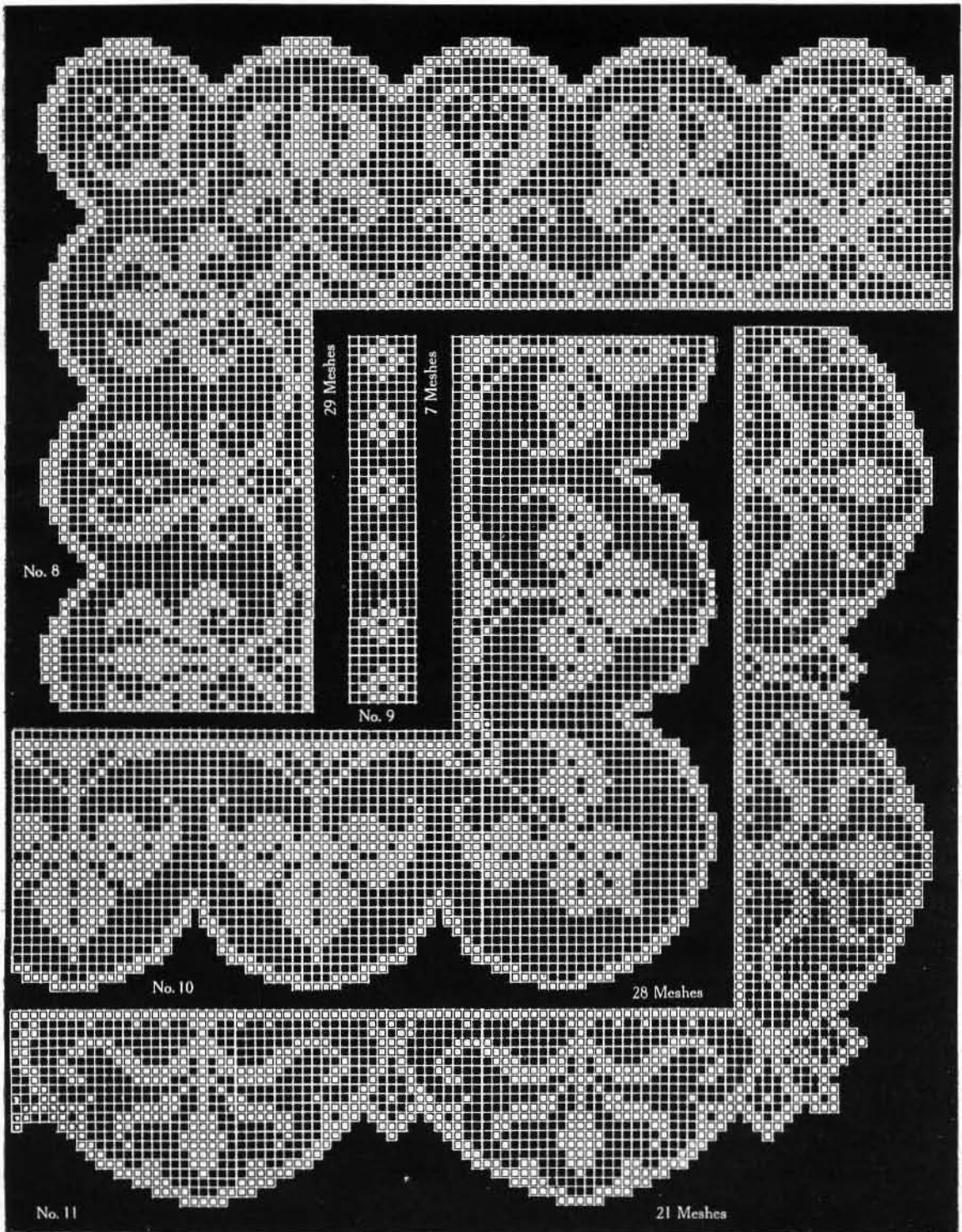


PLATE II

DRESSER COVER.

Insertion No. 33, Plate IX, and Medallion No. 46, Plate XI, are the two attractive designs used in this dresser cover.

French knots in two shades of pink to represent flowers, with little lazy daisy stitches in pale green to form the leaves, cover the center figure of the crochet design. A hem one and one-half inches wide forms a neat finish to this dainty cover. Should you desire to carry out another color scheme, soft shades of yellow with pale shades of green can be used, as well as several shades of pale blue, in combination with pale green. Great care must be exercised in selecting the proper shades, that will produce a harmonious effect.

THE "LOVE BIRD" PILLOW.

As "All the world loves a lover" so will everyone love this beautiful pillow, with our new "Love Bird" design. Could one think of a more appropriate and useful gift for an engagement, wedding or anniversary? It is so dainty and yet so very practical. No. 50 crochet cotton was used to develop this handsome strip for the pillow. The embroidery pattern in Roman Cut Work and French embroidery adds much to the attractiveness. For the lace edge, Design No. 5, Plate I, was employed. This "Love Bird" design can be used in many other ways, for instance, across the ends of dresser and sideboard scarfs, table runners, sash curtains, etc.

THE "DAISY" PILLOW.

A handsome band crocheted from Design No. 38, Plate X, running diagonally across the pillow, is new and novel. A graceful design embroidered in French embroidery in the lower left-hand corner, and a handsome monogram in the opposite corner produce a charming effect. Design No. 1, Plate I, for lace edge forms the finishing touch to this exquisite pillow.

THE "LOVE BIRD" DIVAN COVER.

A revival of the tidy of the days of our grandmothers has been the inspiration for this exquisite and unusual design for a divan cover. The design carried out in No. 50 crochet cotton measures 13 x 33 inches. Made of No. 30 crochet cotton, the design measures 17½ x 46 inches and can be used as a dresser cover. As the work of different individuals varies, it would be advisable to consult our table of sizes before attempting to execute this design to fit a dresser of a certain size. Under a glass, on a mahogany dresser, the effect would be most beautiful.

FANCY WORK BAG.

Rose messaline forms the foundation of this unique work bag. The silk is neatly shirred on oval embroidery hoops. A band of crocheting (Design 21, Plate V) forms the body part of the bag. Finished off at the bottom with a silk tassel, and drawn together at the top with narrow ribbon, the effect is most pleasing.

ALTAR CLOTH EDGINGS.

In the Edging No. 53, Plate XIV, suitable for Altar Cloth, the lily, known in Christian symbolism as the emblem of purity, is arranged in conventionalized form. Worked in crochet

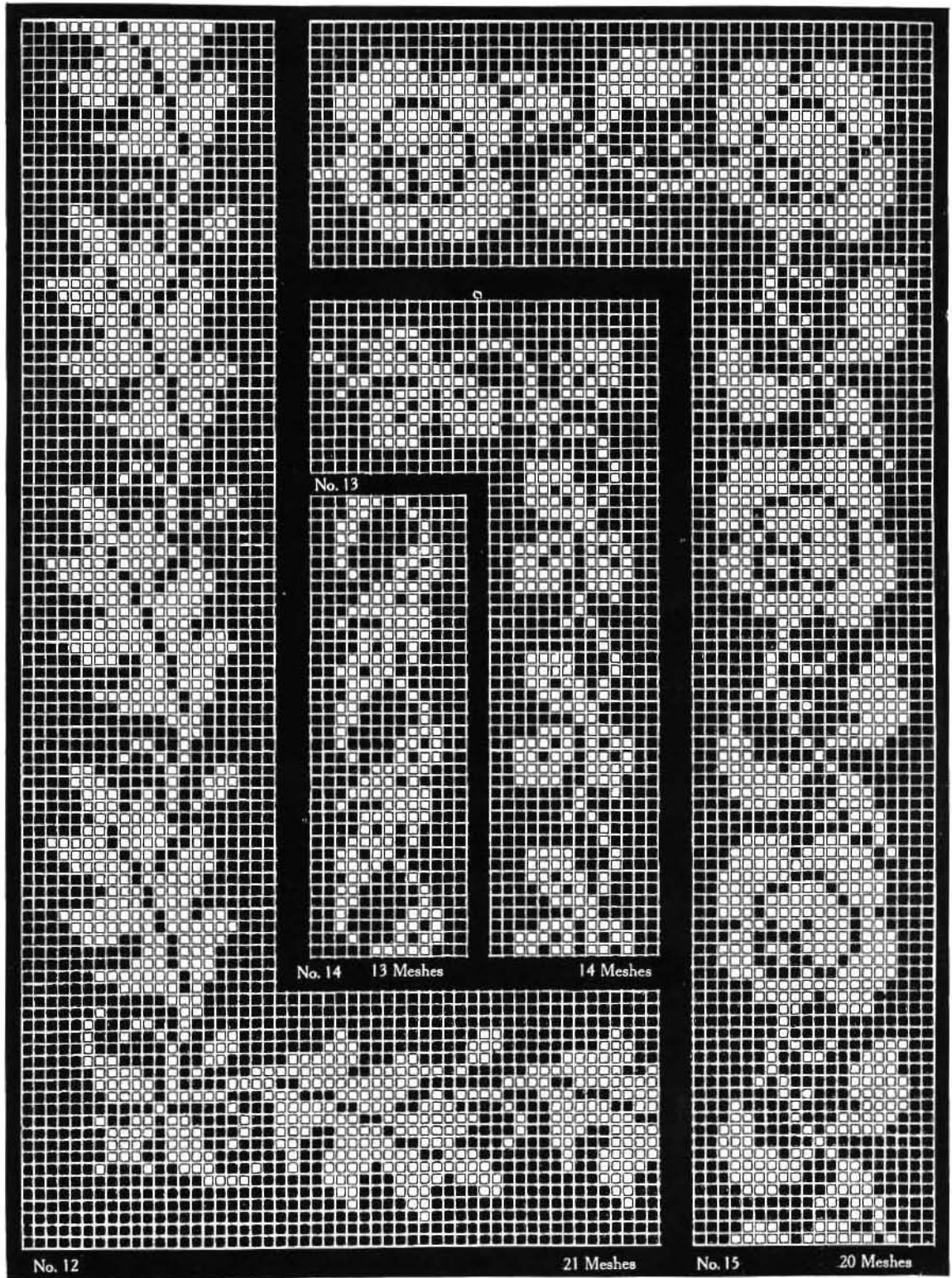


PLATE III



FANCY WORK BAG
8

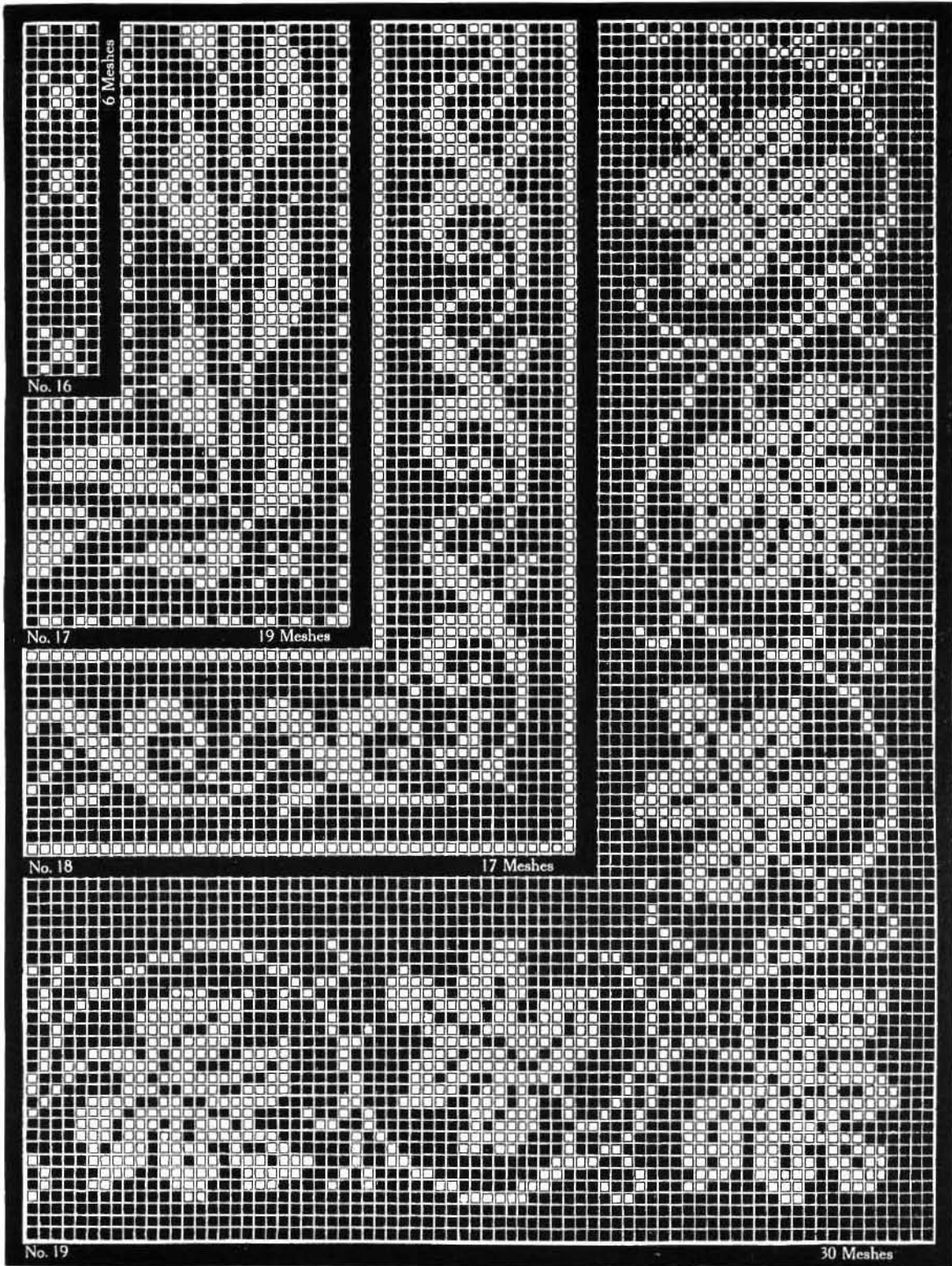
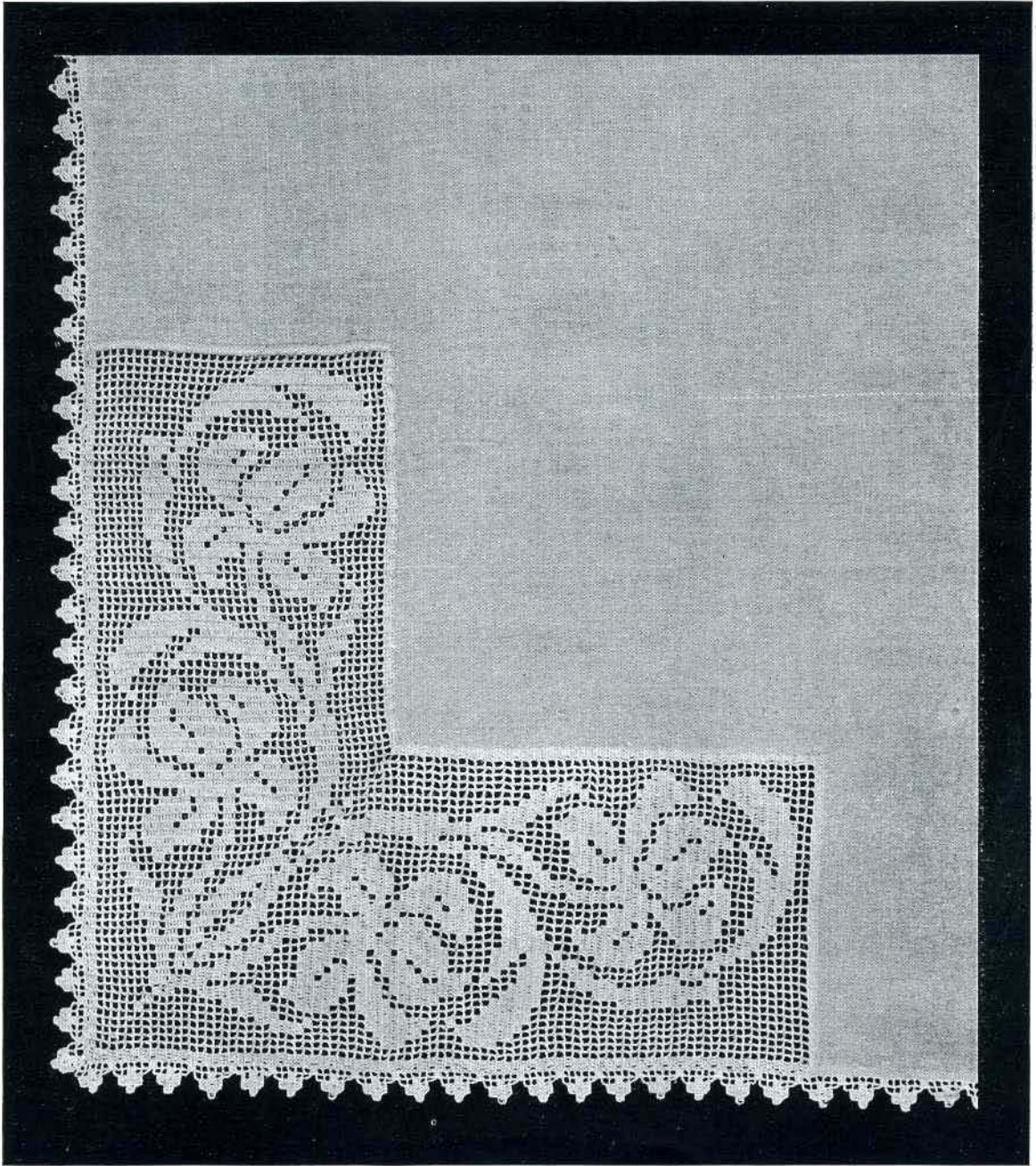


PLATE IV



LUNCHEON CLOTH

cotton No. 20, it will measure eight and one-half inches in width. In the second design on the same plate, the motives used are the chalice, it being necessarily associated with the Lord's Supper, and the crown of thorns, with the three nails, and inscription of the cross, J. N. R. J., the favorite Passion symbols. This design is fifty-seven meshes deep and worked in No. 20 crochet cotton should measure ten inches.

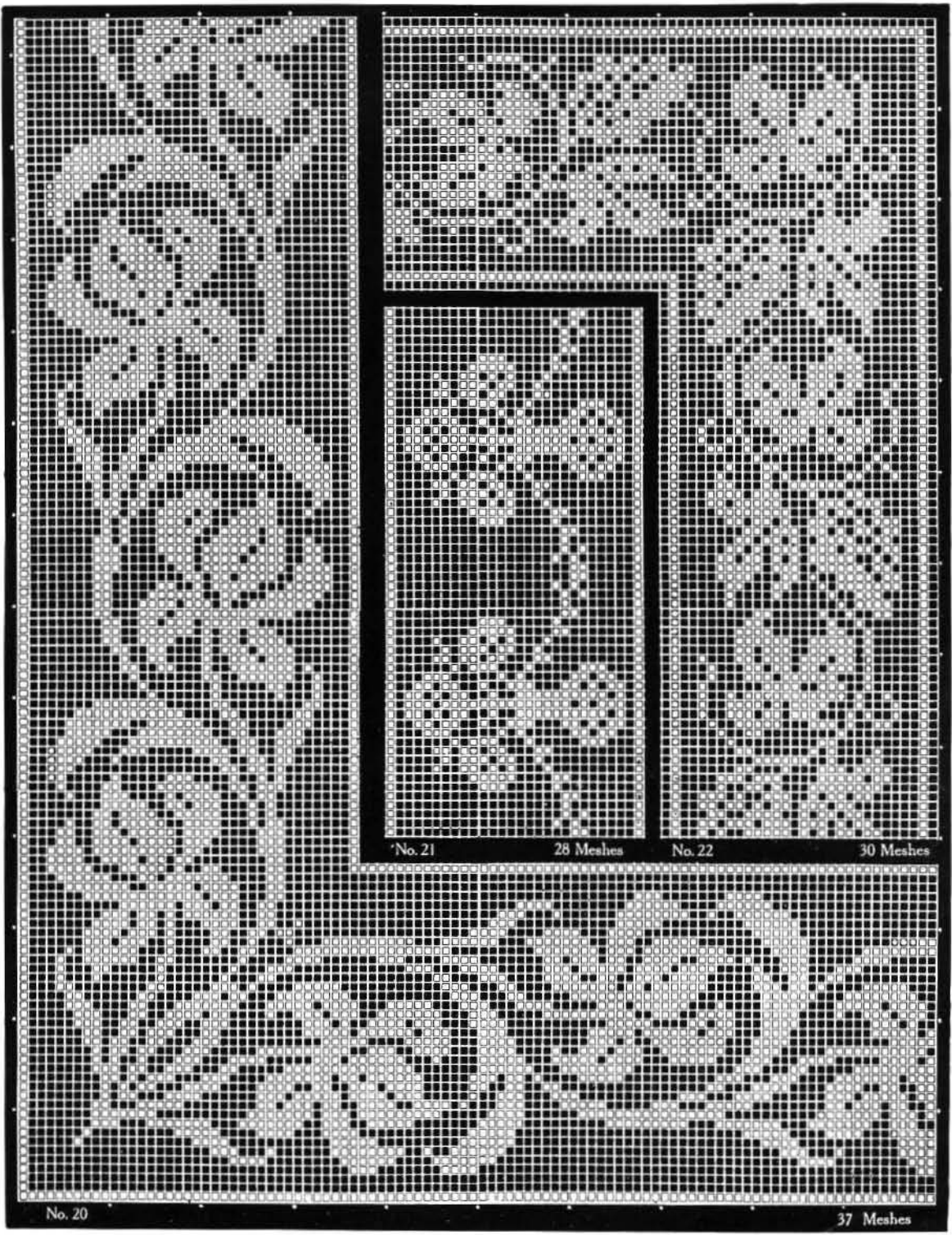
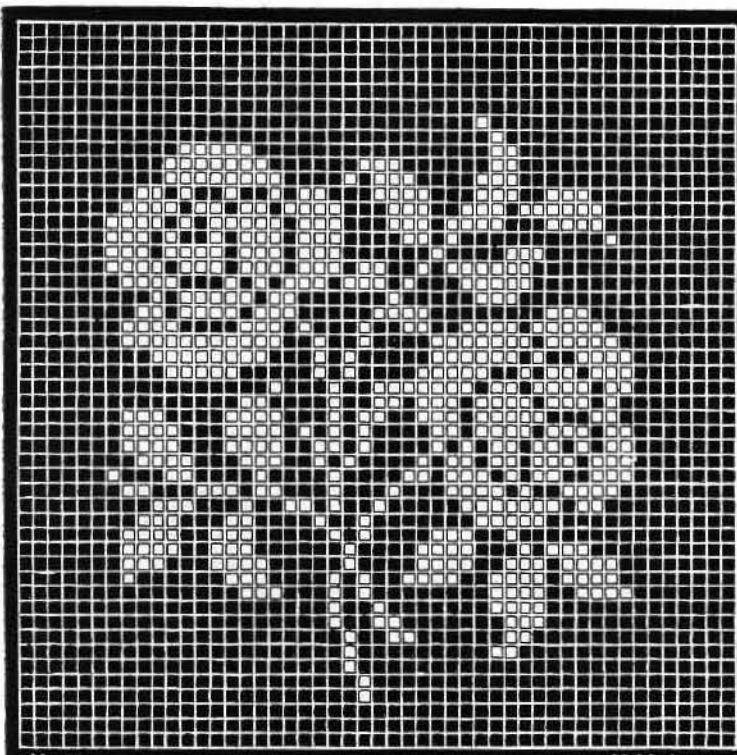
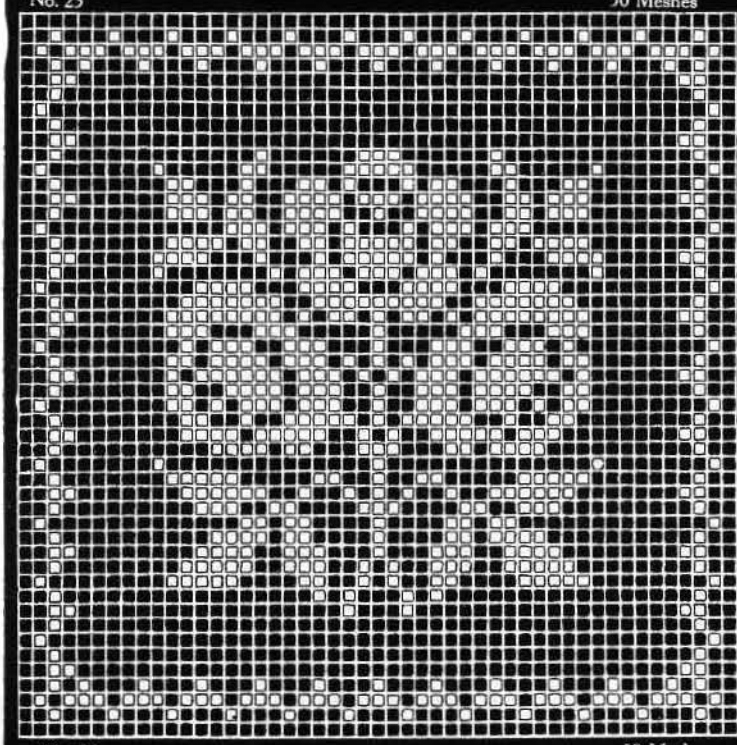


PLATE V



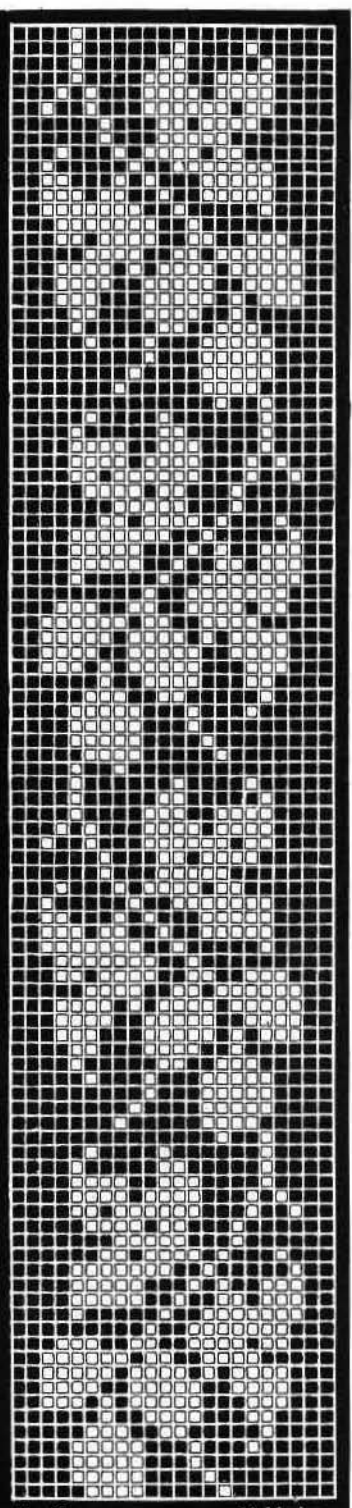
No. 23

50 Meshes



No. 24

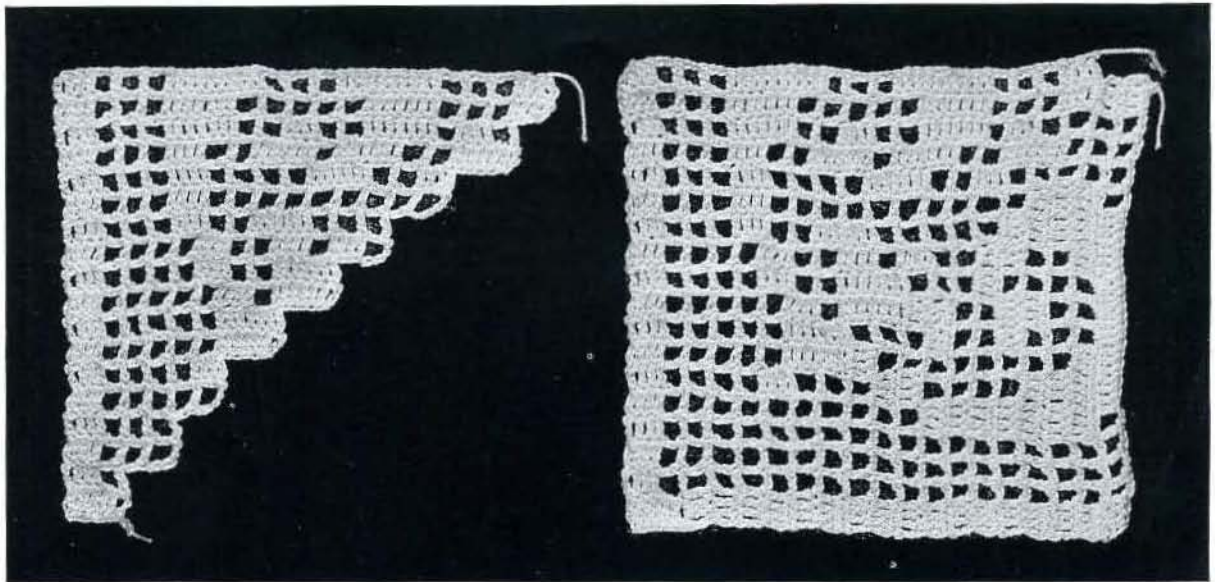
50 Meshes



No. 25

22 Meshes

PLATE VI



MITRED CORNER

turn. 53rd Row: Slip stitch back to 4th t, ch 3, 3 t, 5 o, 3 t, 2 o, 3 t, 2 o, 6 t, 2 o, 3 t, 2 o, 3 t, 5 o, 3 t, turn. 54th Row: Slip stitch back to 4th t, ch 3, 3 t, 3 o, 6 t, 3 o, 6 t, 2 o, 6 t, 3 o, 6 t, 3 o, 3 t, ch 3, turn. 55th Row: 3 t, 3 o, 3 t, 4 o, 6 t, 2 o, 6 t, 4 o, 3 t, 3 o, 3 t, turn. 56th Row: Slip stitch back to 4th t, ch 3, 3 t, 1 o, 6 t, 3 o, 3 t, 2 o, 6 t, 2 o, 3 t, 3 o, 6 t, 1 o, 3 t, turn. 57th Row: Slip stitch back to 4th t, ch 3, 6 t, 4 o, 3 t, 2 o, 6 t, 2 o, 3 t, 4 o, 6 t, turn. 58th Row: Slip stitch back to 4th t, ch 3, 3 t, 5 o, 6 t, 2 o, 6 t, 5 o, 3 t, turn. 59th Row: Slip stitch back to 4th t, ch 3, 3 t, 4 o, 6 t, 2 o, 6 t, 4 o, 3 t, turn. 60th Row: Slip stitch back to 4th t, ch 3, 3 t, 2 o, 3 t, 2 o, 6 t, 2 o, 3 t, 2 o, 3 t, turn. 61st Row: Slip stitch back to 4th t, ch 3, 3 t, 10 o, 3 t, turn. 62nd Row: Slip stitch back to 4th t, ch 3, 3 t, 3 o, 6 t, 3 o, 3 t, turn. 63rd Row: Slip stitch back to 4th t, ch 3, 3 t, 1 o, 3 t, 2 o, 3 t, 1 o, 3 t, turn. 64th Row: Slip stitch back to 4th t, ch 3, 3 t, 4 o, 3 t, turn. 65th Row: Slip stitch back to 4th t, ch 3, 3 t, 2 o, 3 t, turn. 66th Row: Slip stitch back to 4th t, ch 3, 6 t.

This completes one panel, four of these panels are required for the Cozy. For the edge, Design No. 2, Plate I, was used.

DIRECTIONS FOR EDGE No. 2.

Chain 28. 1st Row: 1 t in 4th ch from hook, 5 t, 6 o, turn. 2nd Row: Chain 5, 3 o, 9 t, 2 o, 1 dt into the same stitch that the last t was worked into, 1 dt into the lower twist of preceding dt, repeat until you have 6 dt, turn. 3rd Row: Chain 6, 1 t into 5th ch from hook, 2 t, 7 o, 3 t, 2 o, turn. 4th Row: Chain 5, 7 t, 2 o, 9 t, 3 o, 1 dt into the same stitch that the last t was worked into, 1 dt into the lower twist of the last dt, repeat until you have 3 dt, turn. 5th Row: Chain 6, 1 t into 5th ch from hook, 2 t, 6 o, 6 t, 2 o, 3 t, 1 o, turn. 6th Row: Chain 5, 4 t, 2 o, 6 t, 1 o, 6 t, 3 o, 3 t, turn. 7th Row: Chain 6, 1 t into 5th ch from hook, 2 t, 3 o, 15 t, 2 o, 3 t, 2 o, turn. 8th Row: Chain 5, 1 t, 2 o, 12 t, 1 o, 9 t, 2 o, 3 t, turn. 9th Row: Chain 3, 3 t, 3 o, 15 t, 2 o, 3 t, 2 o, turn. 10th Row: Chain 5, 4 t, 2 o, 6 t, 1 o, 6 t, 3 o, 3 t, turn. 11th Row: Chain 3, 3 t, 6 o, 6 t, 2 o, 3 t, 1 o, turn. 12th Row: Chain 5, 7 t, 2 o, 9 t, 3 o, 3 t, turn. 13th Row: Slip stitch back to the fourth t, ch 3, 3 t, 7 o, 3 t, 2 o, turn. 14th Row: Chain 5, 1 t, 2 o, 9 t, 2 o, 6 t, turn. 15th Row: Slip stitch back to 4th t, ch 3, 9 t, 6 o. This completes one scallop.

WORKING INSTRUCTIONS FOR "SHOO FLY" COVER.

Chain 238, add 3 ch to turn. 1st Row: Make 1 t into 4th ch from hook, 236 t, ch 3, turn. 2nd Row: 12 t, 4 o, 6 t, 3 o, 12 t, 6 o, 6 t, 3 o, 3 t, 2 o, 6 t, 1 o, 6 t, 1 o, 3 t, 1 o, 3 t, 1 o, 3 t, 1 o, 6 t, 1 o, 6 t, 2 o, 3 t, 3 o, 6 t, 6 o, 12 t, 3 o, 6 t, 4 o, 12 t, turn. 3rd Row: Slip stitch

back to 4th t, ch 3, 3 t, 4 o, 6 t, 3 o, 9 t, 11 o, 6 t, 3 o, 3 t, 1 o, 3 t, 2 o, 3 t, 1 o, 15 t, 1 o, 3 t, 2 o, 3 t, 1 o, 3 t, 3 o, 6 t, 11 o, 9 t, 3 o, 6 t, 4 o, 3 t, ch 3, turn. 4th Row: 3 t, 2 o, 6 t, 3 o, 9 t, 7 o, 3 t, 7 o, 9 t, 2 o, 3 t, 2 o, 6 t, 2 o, 3 t, 2 o, 6 t, 2 o, 3 t, 2 o, 9 t, 7 o, 3 t, 7 o, 9 t, 3 o, 6 t, 2 o, 3 t, ch 3, turn. 5th Row: 12 t, 3 o, 6 t, 8 o, 9 t, 12 o, 3 t, 2 o, 21 t, 2 o, 3 t, 12 o, 9 t, 8 o, 6 t, 3 o, 12 t, turn. 6th Row: Slip stitch back to 4th t, ch 3, 3 t, 4 o, 6 t, 10 o, 3 t, 13 o, 6 t, 3 o, 9 t, 3 o, 6 t, 13 o, 3 t, 10 o, 6 t, 4 o, 3 t, ch 3, turn. 7th Row: 6 t, 3 o, 3 t, 19 o, 3 t, 6 o, 6 t, 3 o, 3 t, 3 o, 6 t, 6 o, 3 t, 19 o, 3 t, 3 o, 6 t, turn. 8th Row: Slip stitch back to 4th t, ch 3, 3 t, 2 o, 3 t, 20 o, 3 t, 8 o, 21 t, 8 o, 3 t, 20 o, 3 t, 2 o, 3 t, ch 3, turn. 9th Row: 6 t, 1 o, 3 t, 19 o, 3 t, 3 o, 3 t, 7 o, 9 t, 7 o, 3 t, 3 o, 3 t, 19 o, 3 t, 1 o, 6 t, ch 3, turn. 10th Row: 12 t, 12 o, 3 t, 5 o, 3 t, 2 o, 6 t, 1 o, 3 t, 5 o, 3 t, 1 o, 3 t, 1 o, 3 t, 5 o, 3 t, 1 o, 6 t, 2 o, 3 t, 5 o, 3 t, 12 o, 12 t, turn. 11th Row: Slip stitch back to 4th t, ch 3, 6 t, 4 o, 3 t, 9 o, 9 t, 2 o, 3 t, 1 o, 12 t, 5 o, 3 t, 2 o, 3 t, 2 o, 3 t, 5 o, 12 t, 1 o, 3 t, 2 o, 9 t, 9 o, 3 t, 4 o, 6 t, ch 3, turn. 12th Row: 6 t, 3 o, 9 t, 4 o, 3 t, 6 o, 3 t, 2 o, 15 t, 5 o, 3 t, 1 o, 9 t, 1 o, 3 t, 5 o, 15 t, 2 o, 3 t, 6 o, 3 t, 4 o, 9 t, 3 o, 6 t, turn. 13th Row: Slip stitch back to 4th t, ch 3, 3 t, 4 o, 3 t, 6 o, 6 t, 2 o, 27 t, 2 o, 6 t, 2 o, 3 t, 2 o, 3 t, 2 o, 3 t, 2 o, 6 t, 2 o, 27 t, 2 o, 6 t, 6 o, 3 t, 4 o, 3 t, ch 3, turn. 14th Row: 6 t, 12 o, 21 t, 1 o, 6 t, 2 o, 3 t, 5 o, 3 t, 1 o, 3 t, 1 o, 3 t, 5 o, 3 t, 2 o, 6 t, 1 o, 21 t, 12 o, 6 t, ch 3, turn. 15th Row: 6 t, 10 o, 21 t, 1 o, 9 t, 1 o, 6 t, 6 o, 3 t, 1 o, 3 t, 1 o, 3 t, 6 o, 6 t, 1 o, 9 t, 1 o, 21 t, 10 o, 6 t, turn. 16th Row: Slip stitch back to 4th t, ch 3, 9 t, 7 o, 18 t, 1 o, 6 t, 1 o, 6 t, 10 o, 9 t, 10 o, 6 t, 1 o, 6 t, 1 o, 18 t, 7 o, 9 t, ch 3, turn. 17th Row: 18 t, 4 o, 12 t, 1 o, 24 t, 9 o, 9 t, 9 o, 24 t, 1 o, 12 t, 4 o, 18 t, turn. 18th Row: Slip stitch back to 4th t, ch 3, 6 t, 2 o, 3 t, 4 o, 9 t, 1 o, 12 t, 1 o, 9 t, 1 o, 3 t, 9 o, 3 t, 9 o, 3 t, 1 o, 9 t, 1 o, 12 t, 1 o, 9 t, 4 o, 3 t, 2 o, 6 t, ch 3, turn. 19th Row: 3 t, 2 o, 3 t, 6 o, 3 t, 1 o, 27 t, 1 o, 3 t, 9 o, 3 t, 9 o, 3 t, 1 o, 27 t, 1 o, 3 t, 6 o, 3 t, 2 o, 3 t, ch 3, turn. 20th Row: 6 t, 1 o, 3 t, 5 o, 3 t, 2 o, 12 t, 1 o, 9 t, 2 o, 3 t, 5 o, 3 t, 3 o, 3 t, 3 o, 3 t, 5 o, 3 t, 2 o, 9 t, 1 o, 12 t, 2 o, 3 t, 5 o, 3 t, 1 o, 6 t, turn. 21st Row: Slip stitch back to 4th t, ch 3, 9 t, 8 o, 9 t, 1 o, 12 t, 3 o, 3 t, 3 o, 9 t, 2 o, 3 t, 2 o, 9 t, 3 o, 3 t, 3 o, 12 t, 1 o, 9 t, 8 o, 9 t, ch 3, turn. 22nd Row: 6 t, 12 o, 12 t, 1 o, 3 t, 7 o, 3 t, 3 o, 3 t, 3 o, 3 t, 7 o, 3 t, 1 o, 12 t, 12 o, 6 t, turn. 23rd Row: Slip stitch back to 4th t, ch 3, 3 t, 11 o, 15 t, 1 o, 3 t, 11 o, 3 t, 11 o, 3 t, 1 o, 15 t, 11 o, 3 t, ch 3, turn. 24th Row: 3 t, 5 o, 3 t, 4 o, 3 t, 1 o, 9 t, 3 o, 3 t, 9 o, 9 t, 9 o, 3 t, 3 o, 9 t, 1 o, 3 t, 4 o, 3 t, 5 o, 3 t, ch 3, turn. 25th Row: 3 t, 4 o, 9 t, 21 o, 9 t, 21 o, 9 t, 4 o, 3 t, turn. 26th Row: Slip stitch back to 4th t, ch 3, 3 t, 4 o, 3 t, 22 o, 9 t, 22 o, 3 t, 4 o, 3 t, ch 3, turn. 27th Row: 3 t, 26 o, 15 t, 26 o, 3 t, turn. 28th Row: Slip stitch back to 4th t, ch 3, 3 t, 25 o, 3 t, 1 o, 3 t, 1 o, 3 t, 25 o, 3 t, ch 3, turn. 29th Row: 6 t, 9 o, 6 t, 4 o, 3 t, 7 o, 6 t, 1 o, 3 t, 1 o, 6 t, 7 o, 3 t, 4 o, 6 t, 9 o, 6 t, turn. 30th Row: Slip stitch back to 7th t, ch 3, 6 t, 4 o, 9 t, 1 o, 3 t, 3 o, 9 t, 6 o, 3 t, 2 o, 3 t, 2 o, 3 t, 6 o, 9 t, 3 o, 3 t, 1 o, 9 t, 4 o, 6 t, turn. 31st Row: Slip stitch back to the 7th t, ch 3, 15 t, 3 o, 3 t, 4 o, 3 t, 6 o, 6 t, 1 o, 9 t, 1 o, 6 t, 6 o, 3 t, 4 o, 3 t, 3 o, 15 t, turn. 32nd Row: Slip stitch back to 10th t, ch 3, 9 t, 1 o, 9 t, 9 o, 6 t, 2 o, 9 t, 2 o, 6 t, 9 o, 9 t, 1 o, 9 t, turn. 33rd Row: Slip stitch back to 7th t, ch 3, 15 t, 7 o, 9 t, 2 o, 3 t, 1 o, 3 t, 1 o, 3 t, 2 o, 9 t, 7 o, 15 t, turn. 34th Row: Slip stitch back to 10th t, ch 3, 12 t, 3 o, 9 t, 4 o, 3 t, 1 o, 3 t, 1 o, 3 t, 4 o, 9 t, 3 o, 12 t, turn. 35th Row: Slip stitch back to 7th t, ch 3, 18 t, 5 o, 3 t, 2 o, 3 t, 2 o, 3 t, 5 o, 18 t, turn. 36th Row: Slip stitch back to 10th t, ch 3, 12 t, 3 o, 6 t, 2 o, 3 t, 2 o, 6 t, 3 o, 12 t, turn. 37th Row: Slip stitch back to 7th t, ch 3, 12 t, 1 o, 3 t, 2 o, 9 t, 2 o, 3 t, 1 o, 12 t, turn. 38th Row: Slip stitch back to 10th t, ch 3, 9 t, 2 o, 9 t, 2 o, 9 t, turn. 39th Row: Slip stitch back to 7th t, ch 3, 27 t, turn. 40th Row: Slip stitch back to 10th t, ch 3, 9 t

This constitutes one-half of pattern. To complete this design, repeat entire instructions beginning with second row.

INSTRUCTIONS FOR SIDE PANELS OF "SHOO FLY" COVER.

Chain 106, ch 3 to turn. 1st Row: 35 o, ch 3, turn. 2nd Row: 105 t, ch 3, turn. 3rd Row: 3 t, 1 o, 3 t, 1 o, repeat to end of row, ch 3, turn. 4th Row: 9 t, 2 o, 3 t, 3 o, 3 t, 3 o, 3 t, 3 o, 3 t, 3 o, 3 t, 3 o, 3 t, 3 o, 3 t, 3 o, 3 t, 2 o, 9 t, ch 3, turn. 5th Row: 3 t, 2 o, 3 t, 27 o, 3 t, 2 o, 3 t, ch 3, turn. 6th Row: 6 t, 2 o, 6 t, 23 o, 6 t, 2 o, 6 t, ch 3, turn. 7th Row: 3 t, 1 o, 3 t, 1 o, 6 t, 23 o, 6 t, 1 o, 3 t, 1 o, 3 t, ch 3, turn. 8th Row: 6 t, 4 o, 3 t, 12 o, 3 t, 8 o, 3 t, 4 o, 6 t, ch 3, turn. 9th Row: 3 t, 14 o, 3 t, 18 o, 3 t, ch 3, turn. 10th Row: 6 t, 16 o, 3 t, 3 o, 3 t, 10 o, 6 t, ch 3, turn. 11th Row: 3 t, 1 o, 3 t, 8 o, 3 t, 1 o, 6 t, 2 o, 3 t, 5 o, 3 t, 8 o, 3 t, 1 o, 3 t, ch 3, turn. 12th Row: 6 t, 10 o, 9 t, 2 o, 3 t, 1 o, 12 t, 10 o, 6 t, ch 3, turn. 13th Row: 3 t, 11 o, 15 t, 2 o, 3 t, 6 o, 3 t, 7 o, 3 t, ch 3, turn. 14th Row: 6 t, 7 o, 6 t, 2 o, 27 t, 2 o, 6 t, 7 o, 6 t, ch 3, turn. 15th Row: 3 t, 1 o, 3 t, 8 o, 3 t, 2 o, 6 t, 1 o, 21 t, 8 o, 3 t, 1 o, 3 t, ch 3, turn. 16th Row: 6 t, 7 o, 21 t, 1 o, 9 t, 1 o, 6 t, 10 o, 6 t, ch 3, turn. 17th Row: 6 t, 13 o, 6 t, 1 o, 6 t, 1 o, 18 t,

6 o, 6 t, ch 3, turn. 18th Row: 3 t, 1 o, 3 t, 5 o, 12 t, 1 o, 24 t, 11 o, 3 t, 1 o, 3 t, ch 3, turn. 19th Row: 6 t, 11 o, 3 t, 1 o, 9 t, 1 o, 12 t, 1 o, 9 t, 6 o, 6 t, ch 3, turn. 20th Row: 3 t, 8 o, 3 t, 1 o, 27 t, 1 o, 3 t, 12 o, 3 t, ch 3, turn. 21st Row: 6 t, 11 o, 3 t, 2 o, 9 t, 1 o, 12 t, 2 o, 3 t, 6 o, 6 t, ch 3, turn. 22nd Row: 3 t, 1 o, 3 t, 8 o, 9 t, 1 o, 12 t, 3 o, 3 t, 9 o, 3 t, 1 o, 3 t, ch 3, turn. 23rd Row: 6 t, 13 o, 3 t, 1 o, 12 t, 12 o, 6 t, ch 3, turn. 24th Row: 3 t, 12 o, 15 t, 1 o, 3 t, 14 o, 3 t, ch 3, turn. 25th Row: 6 t, 4 o, 3 t, 7 o, 3 t, 3 o, 9 t, 1 o, 3 t, 5 o, 3 t, 4 o, 6 t, ch 3, turn. 26th Row: 3 t, 1 o, 3 t, 1 o, 6 t, 23 o, 6 t, 1 o, 3 t, 1 o, 3 t, ch 3, turn. 27th Row: 6 t, 2 o, 6 t, 23 o, 6 t, 2 o, 6 t, ch 3, turn. 28th Row: 3 t, 2 o, 3 t, 27 o, 3 t, 2 o, 3 t, ch 3, turn. 29th Row: 9 t, 2 o, 3 t, 3 o, 3 t, 3 o, 3 t, 3 o, 3 t, 3 o, 3 t, 3 o, 3 t, 2 o, 9 t, ch 3, turn. 30th Row: 3 t, 1 o, 3 t, 1 o, repeat to end of row, ch 3, turn. 31st Row: 105 t, ch 3, turn. 32nd Row: 35 o, ch 3, turn.

Second Panel.

Repeat directions for 2nd, 3rd, 4th, 5th, 6th and 7th rows of first panel. 39th Row: 6 t, 4 o, 3 t, 7 o, 3 t, 3 o, 9 t, 1 o, 3 t, 5 o, 3 t, 4 o, 6 t, ch 3, turn. 40th Row: 3 t, 12 o, 15 t, 1 o, 3 t, 14 o, 3 t, ch 3, turn. 41st Row: 6 t, 13 o, 3 t, 1 o, 12 t, 12 o, 6 t, ch 3, turn. 42nd Row: 3 t, 1 o, 3 t, 8 o, 9 t, 1 o, 12 t, 3 o, 3 t, 9 o, 3 t, 1 o, 3 t, ch 3, turn. 43rd Row: 6 t, 11 o, 3 t, 2 o, 9 t, 1 o, 12 t, 2 o, 3 t, 6 o, 6 t, ch 3, turn. 44th Row: 3 t, 8 o, 3 t, 1 o, 27 t, 1 o, 3 t, 12 o, 3 t, ch 3, turn. 45th Row: 6 t, 11 o, 3 t, 1 o, 9 t, 1 o, 12 t, 1 o, 9 t, 6 o, 6 t, ch 3, turn. 46th Row: 3 t, 1 o, 3 t, 5 o, 12 t, 1 o, 24 t, 11 o, 3 t, 1 o, 3 t, ch 3, turn. 47th Row: 6 t, 13 o, 6 t, 1 o, 6 t, 1 o, 18 t, 6 o, 6 t, ch 3, turn. 48th Row: 6 t, 7 o, 21 t, 1 o, 9 t, 1 o, 6 t, 10 o, 6 t, ch 3, turn. 49th Row: 3 t, 1 o, 3 t, 8 o, 3 t, 2 o, 6 t, 1 o, 21 t, 8 o, 3 t, 1 o, 3 t, ch 3, turn. 50th Row: 6 t, 7 o, 6 t, 2 o, 27 t, 2 o, 6 t, 7 o, 6 t, ch 3, turn. 51st Row: 3 t, 11 o, 15 t, 2 o, 3 t, 6 o, 3 t, 7 o, 3 t, ch 3, turn. 52nd Row: 6 t, 10 o, 9 t, 2 o, 3 t, 1 o, 12 t, 10 o, 6 t, ch 3, turn. 53rd Row: 3 t, 1 o, 3 t, 8 o, 3 t, 1 o, 6 t, 2 o, 3 t, 5 o, 3 t, 8 o, 3 t, 1 o, 3 t, ch 3, turn. 54th Row: 6 t, 16 o, 3 t, 3 o, 3 t, 10 o, 6 t, ch 3, turn. 55th Row: 3 t, 14 o, 3 t, 18 o, 3 t, ch 3, turn. 56th Row: 6 t, 4 o, 3 t, 12 o, 3 t, 8 o, 3 t, 4 o, 6 t, ch 3, turn. 57th Row: Same as 7th row. 58th Row: Same as 6th row. 59th Row: Same as 5th row. 60th Row: Same as 4th row. 61st Row: Same as 3rd row. 62nd Row: Same as 2nd row.

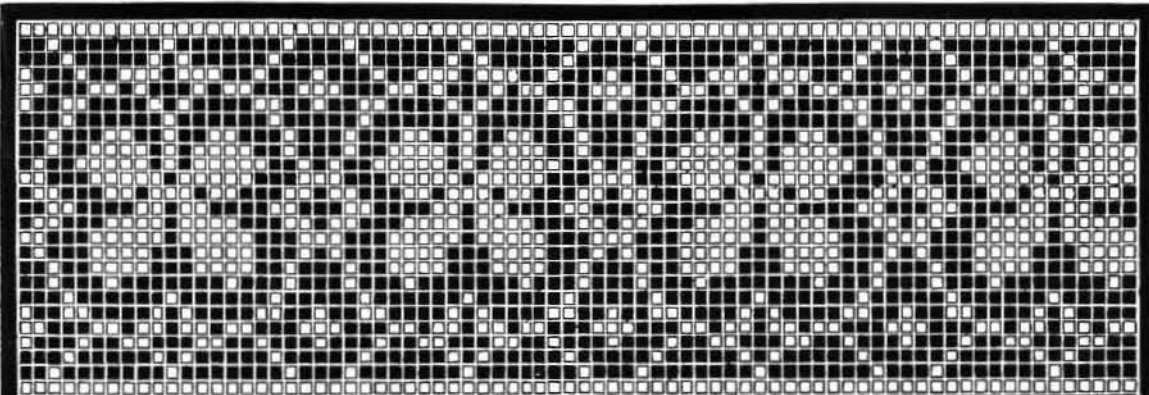
Repeat the entire instructions four times, making eight panels. Join by whipping first and eighth panels together. Whip neatly to the edge of the top. An ivory ring covered with single crochet is sewn to the center of the top. The cover is then stretched over a wire frame.

COVER DESIGN.

Chain 61. 1st Row: 1 t into 5th ch from hook, 2 t, 3 o, 9 t, 7 o, 15 t, ch 3, turn. 2nd Row: 3 t, 1 o, 6 t, 7 o, 6 t, 6 o, 3 t, ch 6, turn. 3rd Row: 1 t, into 5th ch from hook. 5 t, 7 o, 6 t, 6 o, 12 t, ch 3, turn. 4th Row: 3 t, 1 o, 3 t, 1 o, 3 t, 3 o, 12 t, 6 o, 12 t, ch 3, turn. 5th Row: 15 t, 6 o, 15 t, 1 o, 3 t, 1 o, 9 t, ch 3, turn. 6th Row: 3 t, 1 o, 3 t, 2 o, 15 t, 4 o, 3 t, 1 o, 18 t, ch 12, turn. 7th Row: 1 t into 5th ch from hook, 8 t, 1 o, 18 t, 8 o, 6 t, 2 o, 9 t, ch 3, turn. 8th Row: 3 t, 1 o, 3 t, 1 o, 6 t, 1 o, 3 t, 7 o, 15 t, 1 o, 12 t, 1 dt into same stitch into which last t was made, 1 dt into lower twist of last dt, repeat until you have 6 dt, ch 6, turn. 9th Row: 1 t into 5th ch from hook, 20 t, 1 o, 15 t, 2 o, 3 t, 2 o, 6 t, 3 o, 3 t, 1 o, 9 t, ch 3, turn. 10th Row: 3 t, 1 o, 6 t, 6 o, 6 t, 4 o, 9 t, 1 o, 24 t, 1 dt into same st into which last t was made, 1 dt into lower twist of last dt, 1 dt into lower twist of last dt, ch 6, turn. 11th Row: 1 t into 5th chain from hook, 32 t, 1 o, 21 t, 6 o, 15 t, ch 3, turn. 12th Row: 3 t, 1 o, 6 t, 6 o, 6 t, 4 o, 9 t, 1 o, 27 t, turn. 13th Row: Slip stitch back to 4th t, ch 3, 21 t, 1 o, 15 t, 2 o, 3 t, 2 o, 6 t, 3 o, 3 t, 1 o, 9 t, ch 3, turn. 14th Row: 3 t, 1 o, 3 t, 1 o, 6 t, 1 o, 3 t, 7 o, 15 t, 1 o, 18 t, turn. 15th Row: Slip stitch back to 7th t, ch 3, 9 t, 1 o, 18 t, 8 o, 6 t, 2 o, 9 t, ch 3, turn. 16th Row: 3 t, 1 o, 3 t, 2 o, 15 t, 4 o, 3 t, 1 o, 18 t, ch 3, turn. 17th Row: 15 t, 6 o, 15 t, 1 o, 3 t, 1 o, 9 t, ch 3, turn. 18th Row: 3 t, 1 o, 3 t, 1 o, 3 t, 3 o, 12 t, 6 o, 12 t, turn. 19th Row: Slip stitch back to 4 t, ch 3, 6 t, 7 o, 6 t, 6 o, 12 t, ch 3, turn. 20th Row: 3 t, 1 o, 6 t, 7 o, 6 t, 6 o, 3 t, turn. 21st Row: Slip stitch back to 4th t, ch 3, 3 t, 3 o, 9 t, 7 o, 15 t.

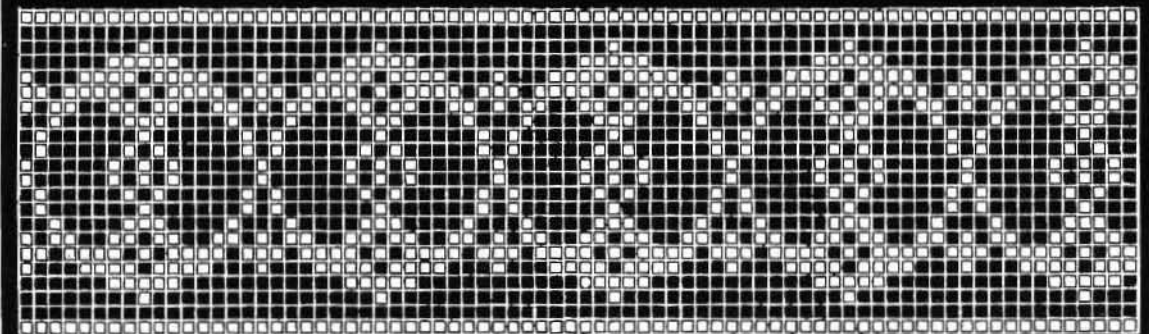
INSTRUCTIONS FOR MITRED CORNER, No. 18, Plate IV.

Chain 55. 1st Row: 1 t into 5th ch from hook, 2 t, 3 o, 9 t, 3 o, 9 t, 3 o, 3 t, ch 3, turn. 2nd Row: 3 t, 3 o, 6 t, 5 o, 6 t, 3 o, 3 t, ch 3, turn. 3rd Row: 3 t, 3 o, 6 t, 2 o, 3 t, 2 o, 6 t, 1 o, 3 t, 1 o, ch 3, turn (this row is one mesh shorter than previous row). 4th Row: 6 t, 2 o, 6 t, 1 o, 6 t, 2 o, 3 t, 3 o, 3 t, ch 3, turn. 5th Row: 3 t, 3 o, 3 t, 4 o, 6 t, 2 o, 3 t, ch 5, turn (this row is two meshes shorter than previous row). 6th Row: 9 o, 3 t, 3 o, 3 t, ch 3, turn. 7th Row: 3 t.



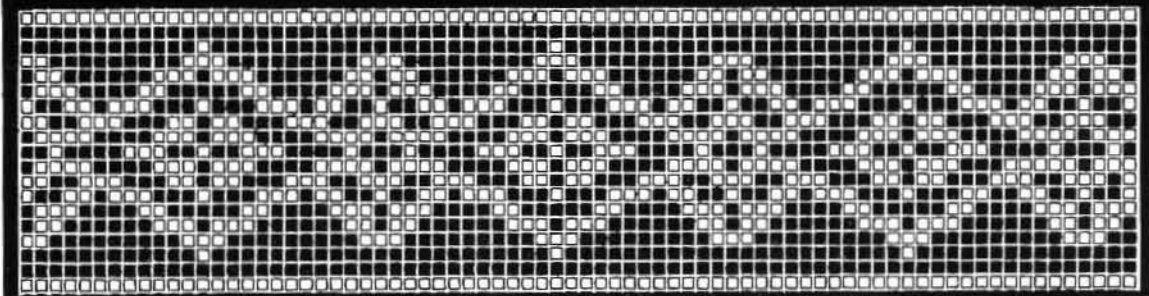
No. 26

25 Meshes



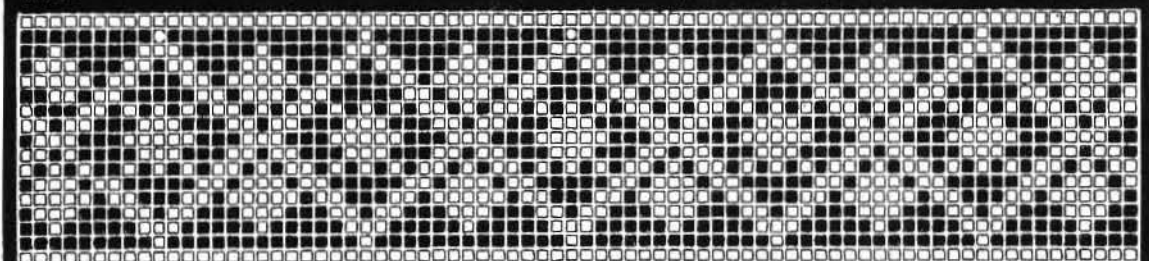
No. 27

22 Meshes



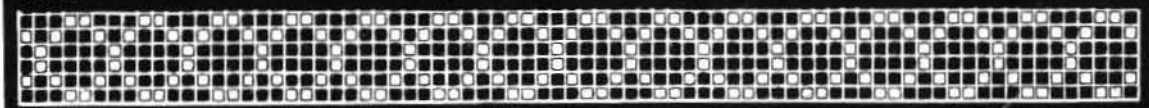
No. 28

19 Meshes



No. 29

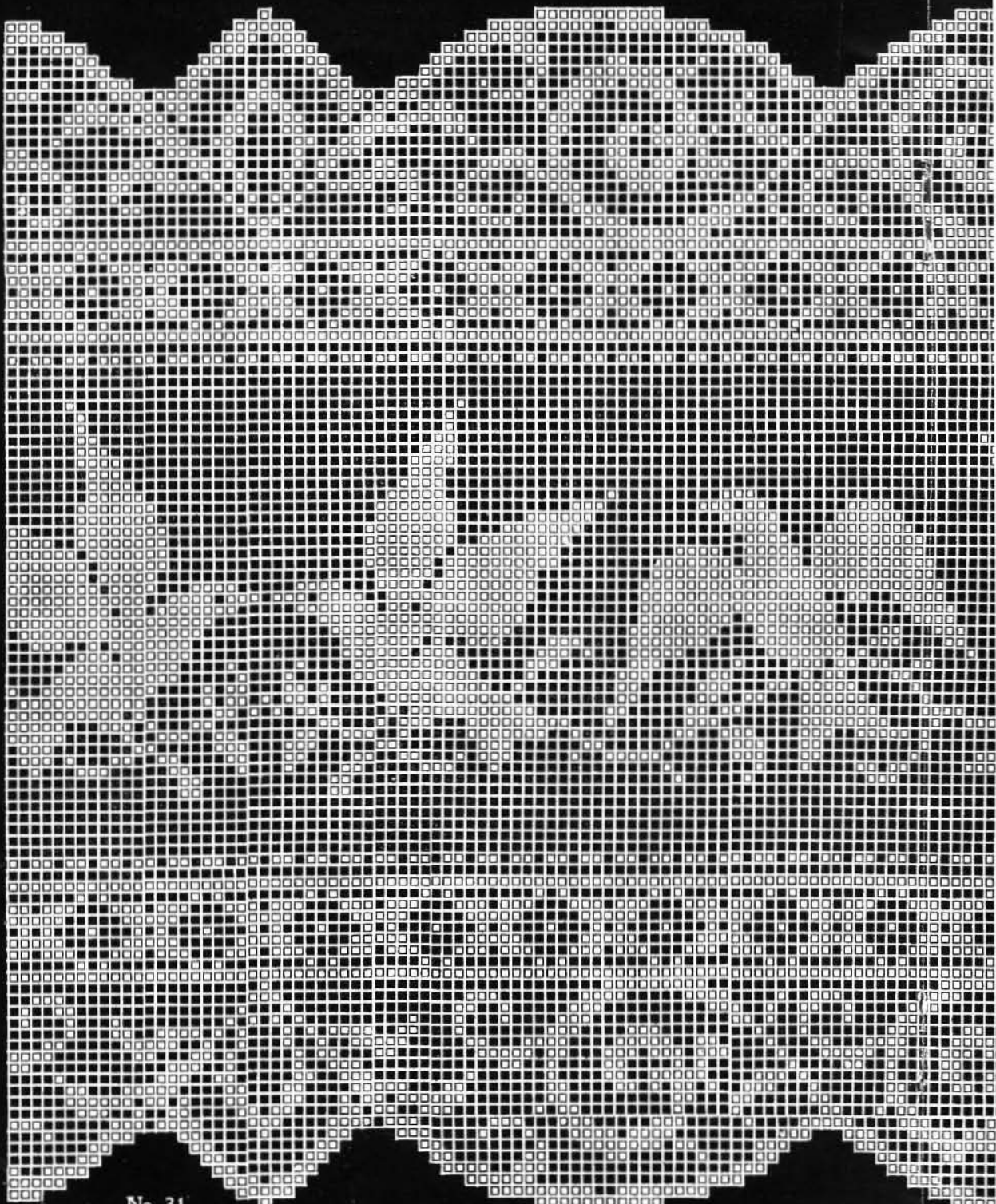
17 Meshes



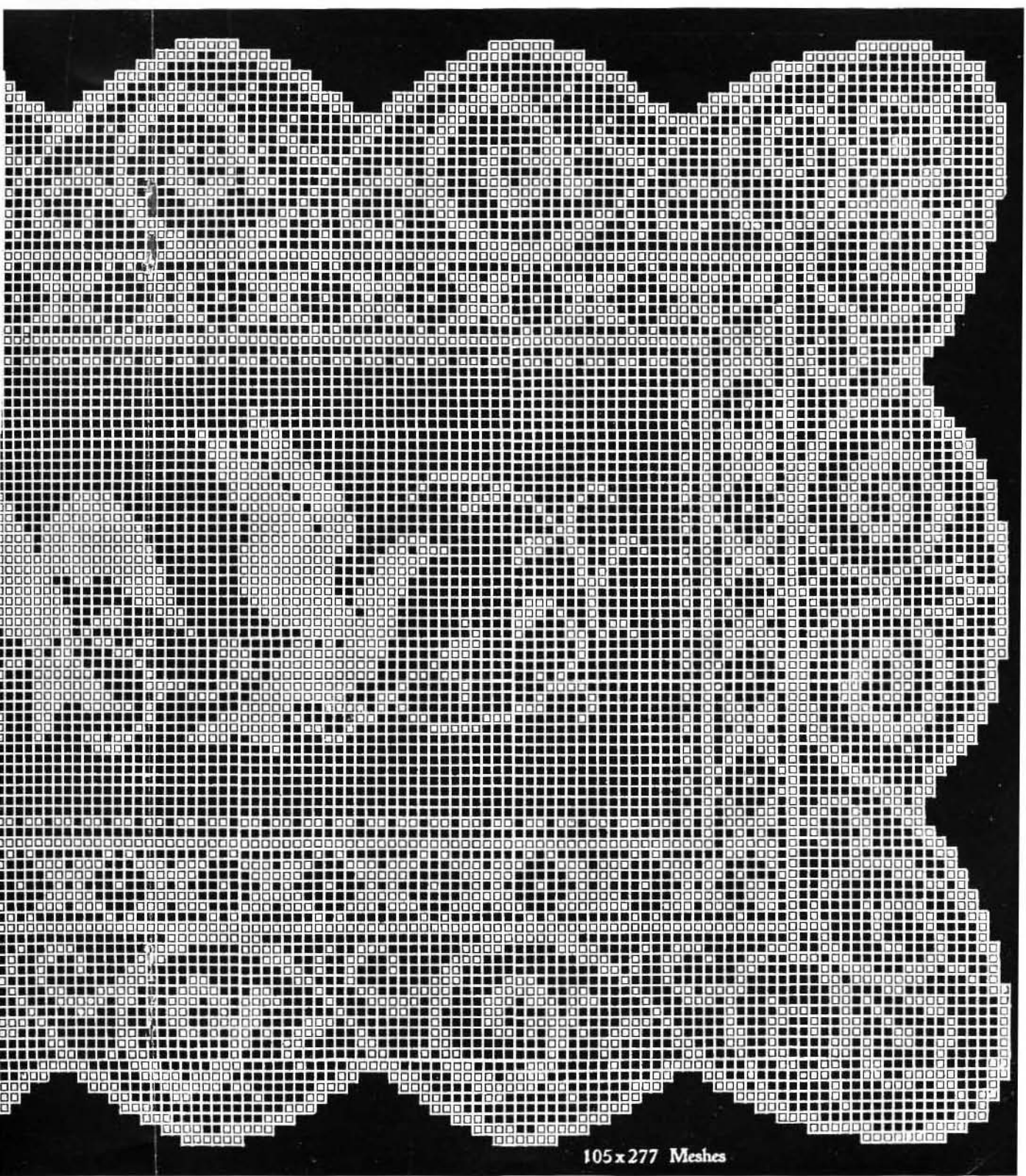
No. 30

6 Meshes

PLATE VII
17



No. 31



105 x 277 Meshes

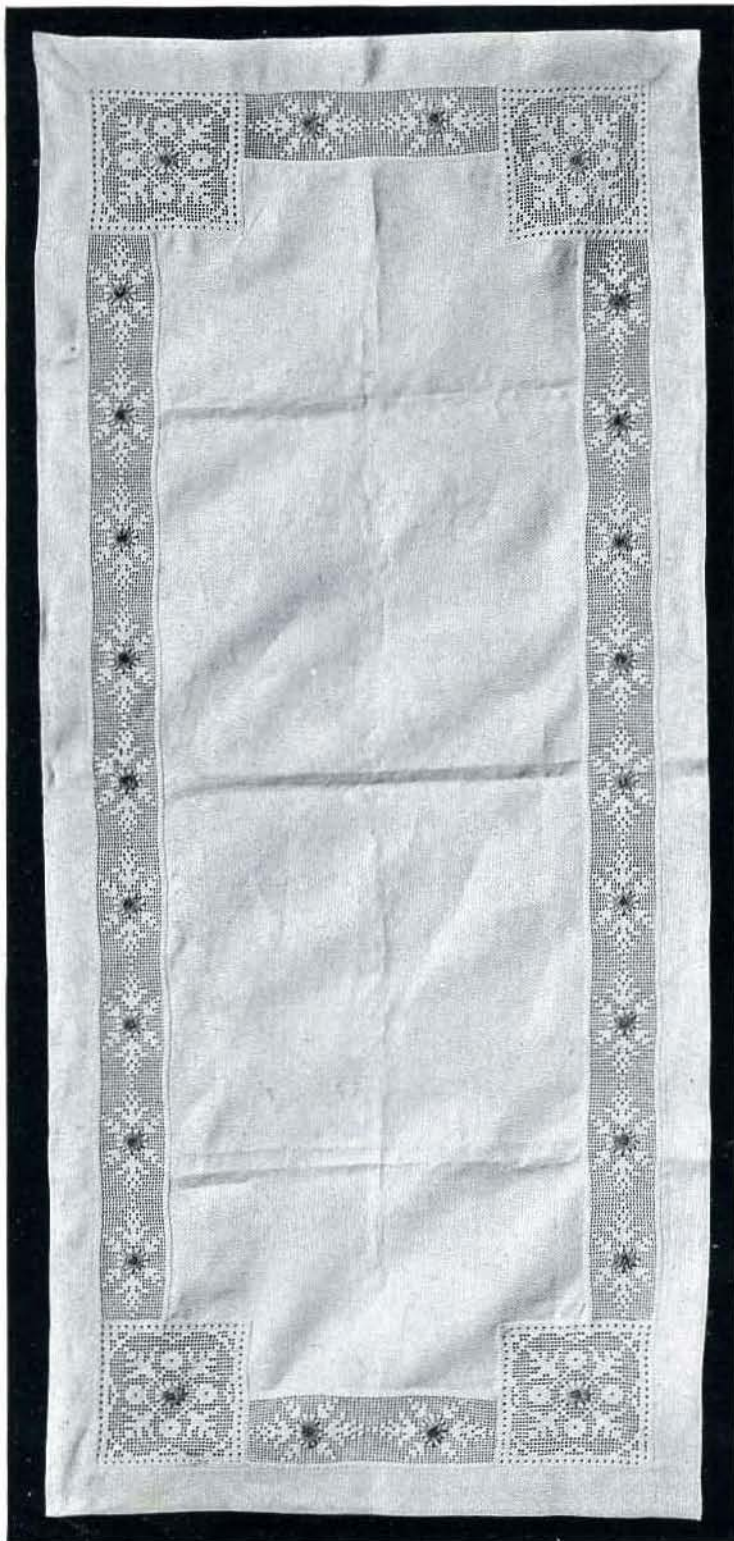


3 o, 3 t, 2 o, 6 t, 3 o, ch 5, turn (this row is two meshes shorter than previous row). 8th Row: 1 o, 3 t, 1 o, 3 t, 2 o, 3 t, 4 o, 3 t, ch 3, turn. 9th Row: 3 t, 4 o, 3 t, 2 o, 6 t, ch 3, turn (this row is two meshes shorter than previous row). 10th Row: 6 t, 1 o, 3 t, 5 o, 3 t, ch 3, turn. 11th Row: 3 t, 5 o, 6 t, ch 3, turn (this row is two meshes shorter than previous row). 12th Row: 6 t, 5 o, 3 t, ch 3, turn. 13th Row: 3 t, 4 o, 3 t, ch 5, turn (this row is two meshes shorter than previous row). 14th Row: 5 o, 3 t, ch 3, turn. 15th Row: 3 t, 3 o, ch 5, turn (this row is two meshes shorter than previous row). 16th Row: 3 o, 3 t, ch 3, turn. 17th Row: 3 t, 1 o, ch 3, turn. 18th Row: 6 t, turn sl st back over trebles just made. 19th Row: Chain 3, 3 t into side of treble, 1 t into t on side of step. 20th Row: Chain 2, 1 t into corner ch, turn, ch 2, 4 t, ch 3, turn. 21st Row: 3 t, 2 o, 1 t into t on side of step. 22nd Row: Chain 2, 1 t into corner ch, turn, 2 o, 3 t, ch 3, turn. 23rd Row: 3 t, 4 o, 1 t into center t on side of step. 24th Row: Chain 2, 1 t into outside t, turn, 4 o, 3 t, ch 3, turn. 25th Row: 3 t, 5 o, 3 t, 1 t into center t on side of step. 26th Row: Chain 2, 1 t into corner t, turn, 1 o, 3 t, 4 o, 3 t, ch 3, turn. 27th Row: 3 t, 4 o, 3 t, 2 o, 3 t, 1 t into center of step. 28th Row: Chain 2, 1 t into ch in corner of step, turn, 6 t, 2 o, 3 t, 3 o, 3 t, ch 3, turn. 29th Row: 3 t, 3 o, 3 t, 6 o, 1 t into center of step. 30th Row: Chain 2, 1 t into corner of step, turn, 6 t, 4 o, 3 t, 3 o, 3 t, ch 3, turn. 31st Row: 3 t, 3 o, 3 t, 2 o, 6 t, 1 o, 6 t, 1 o, 1 t into center t on side of step. 32nd Row: Chain 2, 1 t into corner of step, turn, 6 t, 2 o, 3 t, 2 o, 6 t, 3 o, 3 t, ch 3, turn. 33rd Row: 3 t, 3 o, 6 t, 5 o, 6 t, 2 o, 1 t into corner, sl st over side of t of second row, ch 3, turn. 34th Row: 3 t on side of t, 3 o, 9 t, 3 o, 9 t, 3 o, 3 t, ch 3, turn. This is the first row, full width of pattern.

“LOVE BIRD” DIVAN COVER

DIRECTIONS FOR ALTAR CLOTH (Lily Design)

Chain 88. 1st Row: 1 t into 5th ch from hook, 5 t, 3 o, 21 t, 9 o, 9 t, 1 o, 3 t, 1 o, 3 t, ch 3, turn. 2nd Row: 3 t, 3 o, 6 t, 11 o, 9 t, 7 o, 3 t, ch 6, turn. 3rd Row: 1 t in 5th ch from hook, 2 t, 7 o, 3 t, 1 o, 3 t, 1 o, 3 t, 11 o, 6 t, 1 o, 6 t, ch 3, turn. 4th Row: 15 t, 21 o, 9 t, 1 dt into the same st into which the last t was made, 1 dt into the lower twist of the last dt, 1 dt into the lower twist of the last dt, ch 9, turn. 5th Row: 1 t into 5th ch from hook, 23 t, 19 o, 6 t, 1 o, 6 t, ch 3, turn. 6th Row: 3 t, 1 o, 3 t, 1 o, 6 t, 17 o, 6 t, 4 o, 9 t, 1 dt into the same stitch into which the last t was made, 1 dt into the lower twist of the last dt, 1 dt into the lower twist of the last dt, ch 6, turn. 7th Row: 1 t into 5th ch from hook, 8 t, 7 o, 6 t, 6 o, 6 t, 7 o, 21 t, ch 3, turn. 8th Row: 3 t, 1 o, 3 t, 1 o, 6 t, 6 o, 6 t, 2 o, 3 t, 5 o, 3 t, 9 o, 6 t, 1 dt into same st into which the last t was made, 1 dt into lower twist of last dt, 1 dt into lower twist of last dt, ch 3, turn. 9th Row: 6 t, 10 o, 3 t, 9 o, 6 t, 6 o, 6 t, 1 o, 6 t, ch 3, turn. 10th Row: 15 t, 6 o, 6 t, 10 o, 3 t, 10 o, 3 t, 1 dt into the same st into which the last t was made, 1 dt into lower twist of last dt, 1 dt into lower twist of last dt, ch 3, turn. 11th Row: 6 t, 5 o, 21 t, 9 o, 6 t, 6 o, 6 t, 1 o, 6 t, ch 3, turn. 12th Row: 3 t, 3 o, 6 t, 5 o, 6 t, 8 o, 30 t, 4 o, 3 t, ch 6, turn. 13th Row: 1 t into 5th st from hook, 5 t, 2 o, 42 t, 5 o, 9 t, 4 o, 9 t, 1 o, 3 t, 1 o, 3 t, ch 3, turn. 14th Row: 3 t, 3 o, 6 t, 6 o, 69 t, 1 o, 3 t, ch 3, turn. 15th Row: 12 t, 7 o, 39 t, 8 o, 6 t, 1 o, 6 t, ch 3, turn. 16th Row: 15 t, 10 o, 27 t, 11 o, 6 t, 1 dt into same st into which last t was made, 1 dt into lower twist of last dt, 1 dt into lower twist of last dt, ch 6, turn. 17th Row: 1 t into 5th ch from hook, 11 t, 2 o, 15 t, 7 o, 12 t, 12 o, 6 t, 1 o, 6 t, ch 3, turn. 18th Row: 3 t, 1 o, 3 t, 1 o, 6 t, 19 o, 36 t, 1 o, 3 t, 1 dt into same st last t was made, 1 dt into lower twist of last dt, 1 dt into lower twist of last dt, ch 3, turn. 19th Row: 3 t, 2 o, 42 t, 16 o, 21 t, ch 3, turn. 20th Row: 3 t, 1 o, 3 t, 1 o, 6 t, 16 o, 48 t, 2 o, 1 dt into same st into which last t was made, 1 dt into lower twist of last dt, 1 dt into lower twist of last dt, ch 6, turn. 21st Row: 1 t into 5th ch from hook, 2 t, 2 o, 15 t, 6 o, 18 t, 17 o, 6 t, 1 o, 6 t, ch 3, turn. 22nd Row: 15 t, 16 o, 15 t, 8 o, 6 t, 1 o, 9 t, 1 o, 3 t, ch 6, turn. 23rd Row: 1 t into 5th ch from hook, 2 t, 1 o, 9 t, 2 o, 6 t, 10 o, 9 t, 16 o, 6 t, 1 o, 6 t, ch 3, turn. 24th Row: 3 t, 3 o, 6 t, 15 o, 9 t, 3 o, 6 t, 5 o, 6 t, 3 o, 6 t, 1 o, 3 t, ch 6, turn. 25th Row: 1 t into 5th ch from hook, 11 t, 3 o, 9 t, 4 o, 3 t, 6 o, 6 t, 14 o, 9 t, 1 o, 3 t, 1 o, 3 t, ch 3, turn. 26th Row: 3 t, 3 o, 6 t, 16 o, 3 t, 6 o, 6 t, 3 o, 9 t, 4 o, 3 t, 1 o, 3 t, ch 3, turn. 27th Row: 9 t, 3 o, 9 t, 3 o, 12 t, 5 o, 3 t, 17 o, 6 t, 1 o, 6 t, ch 3, turn. 28th Row: 15 t, 9 o, 12 t, 5 o, 3 t, 2 o, 18 t, 3 o, 12 t, 3 o, 3 t, 1 o, 1 dt into same st last t was made, 1 dt into lower twist of last dt, 1 dt into lower twist of last dt, ch 3, turn. 29th Row: 3 t, 1 o, 3 t, 2 o, 15 t, 4 o, 18 t, 5 o, 21 t, 8 o, 6 t, 1 o, 6 t, ch 3, turn. 30th Row: 3 t, 1 o, 3 t, 1 o, 6 t, 6 o, 27 t, 3 o, 18 t, 6 o, 15 t, 2 o, 6 t, ch 6, turn. 31st Row: 1 t into 5th ch from hook, 2 t, 1 o, 3 t, 2 o, 15 t, 8 o, 12 t, 3 o, 30 t, 4 o, 21 t, ch 3, turn. 32nd Row: 3 t, 1 o, 3 t, 1 o, 6 t, 5 o, 9 t, 4 o, 15 t, 1 o, 9 t, 10 o, 15 t, 1 o, 3 t, 1 o, 3 t, ch 3, turn. 33rd Row: 9 t, 1 o, 12 t, 2 o, 3 t, 8 o, 6 t, 1 o, 9 t, 3 o, 12 t, 2 o, 3 t, 6 o, 6 t, 1 o, 6 t, ch 3, turn. 34th Row: 15 t, 7 o, 27 t, 2 o, 15 t, 2 o, 6 t, 3 o, 3 t, 3 o, 21 t, ch 6, turn. 35th Row: 1 t into 5th ch from hook, 17 t, 3 o, 6 t, 3 o, 3 t, 1 o, 6 t, 1 o, 12 t, 1 o, 15 t, 1 o, 3 t, 1 o, 12 t, 6 o, 6 t, 1 o, 6 t, ch 3, turn. 36th Row: 3 t, 3 o, 6 t, 4 o, 9 t, 1 o, 15 t, 1 o, 12 t, 1 o, 3 t, 1 o, 9 t, 7 o, 6 t, 4 o, 3 t, 1 o, 6 t, ch 3, turn. 37th Row: 1 t into 5th ch from hook, 77 t, 1 o, 36 t, 2 o, 9 t, 1 o, 3 t, 1 o, 3 t, ch 3, turn. 38th Row: 3 t, 3 o, 6 t, 4 o, 9 t, 1 o, 15 t, 1 o, 12 t, 1 o, 3 t, 1 o, 9 t, 7 o, 6 t, 4 o, 3 t, 1 o, 6 t, ch 3, turn. 39th Row: 18 t, 3 o, 6 t, 3 o, 3 t, 1 o, 6 t, 1 o, 12 t, 1 o, 15 t, 1 o, 3 t, 1 o, 12 t, 6 o, 6 t, 1 o, 6 t, ch 3, turn. 40th Row: 15 t, 7 o, 27 t, 2 o, 15 t, 2 o, 6 t, 3 o, 3 t, 3 o, 21 t, ch 3, turn. 41st Row: 9 t, 1 o, 9 t, 3 o, 3 t, 8 o, 6 t, 1 o, 9 t, 3 o, 12 t, 2 o, 3 t, 6 o, 6 t, 1 o, 6 t, ch 3, turn. 42nd Row: 3 t, 1 o, 3 t, 1 o, 6 t, 5 o, 9 t, 4 o, 15 t, 1 o, 9 t, 10 o, 15 t, 1 o, 3 t, 1 o, 3 t, ch 3, turn. 43rd Row: 3 t, 1 o, 3 t, 2 o, 15 t, 8 o, 12 t, 3 o, 30 t, 4 o, 21 t, ch 3, turn. 44th Row: 3 t, 1 o, 3 t, 1 o, 6 t, 6 o, 27 t, 3 o, 18 t, 6 o, 15 t, 2 o, 6 t, ch 3, turn. 45th Row: 9 t, 2 o, 15 t, 4 o, 18 t, 5 o, 21 t, 8 o, 6 t, 1 o, 6 t, ch 3, turn. 46th Row: 15 t, 9 o, 12 t, 5 o, 3 t, 2 o, 18 t, 3 o, 12 t, 3 o, 9 t, turn. 47th Row: Slip stitch back to 4th t, ch 3, 9 t, 3 o, 9 t, 3 o, 12 t, 5 o, 3 t, 17 o, 6 t, 1 o, 6 t, ch 3, turn. 48th Row: 3 t, 3 o, 6 t, 16 o, 3 t, 6 o, 6 t, 3 o, 9 t, 4 o, 3 t, 1 o, 3 t, ch 3, turn. 49th Row: 12 t, 3 o, 9 t, 4 o, 3 t, 6 o, 6 t, 14 o, 9 t, 1 o, 3 t, 1 o, 3 t, ch 3, turn. 50th Row: 3 t, 3 o, 6 t, 15 o, 9 t, 3 o, 6 t, 5 o, 6 t, 3 o, 6 t, 1 o, 3 t, ch 3, turn. 51st Row: 3 t, 1 o, 9 t, 2 o, 6 t, 10 o, 9 t, 16 o, 6 t, 1 o, 6 t, ch 3, turn. 52nd Row: 15 t, 16 o, 15 t, 8 o, 6 t, 1 o, 9 t, 1 o, 3 t, ch 3, turn. 53rd Row: 3 t, 2 o, 15 t, 6 o, 18 t, 17 o, 6 t, 1 o, 6 t, ch 3, turn. 54th Row: 3 t, 1 o, 3 t, 1 o, 6 t, 16 o, 48 t, 2 o, 3 t, turn. 55th Row: Slip stitch back to 4th t, ch 3, 3 t, 2 o, 42 t, 16 o, 21 t, ch 3, turn. 56th Row: 3 t, 1 o, 3 t, 1 o, 6 t, 19 o, 36 t, 1 o, 6 t, turn. 57th Row: Slip stitch



DRESSER COVER

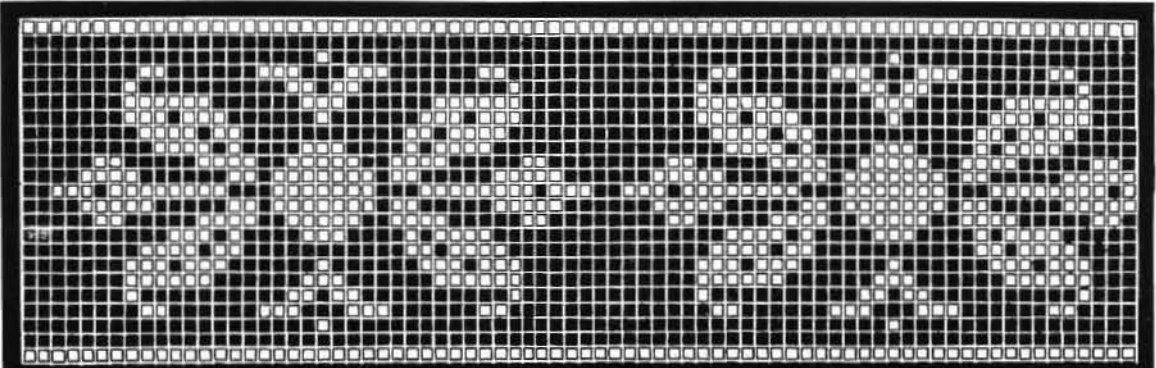
back to 4th t, ch 3, 12 t, 2 o, 15 t, 7 o, 12 t, 12 o, 6 t, 1 o, 6 t, ch 3, turn. 58th Row: 15 t, 10 o, 27 t, 10 o, 12 t, turn. 59th Row: Slip stitch back to 4th t, ch 3, 15 t, 6 o, 39 t, 8 o, 6 t, 1 o, 6 t, ch 3, turn. 60th Row: 3 t, 3 o, 6 t, 6 o, 69 t, 1 o, 3 t, ch 3, turn. 61st Row: 6 t, 2 o, 42 t, 5 o, 9 t, 4 o, 9 t, 1 o, 3 t, 1 o, 3 t, ch 3, turn. 62nd Row: 3 t, 3 o, 6 t, 5 o, 6 t, 8 o, 30 t, 4 o, 3 t, ch 3, turn. 63rd Row: 6 t, 5 o, 21 t, 9 o, 6 t, 6 o, 6 t, 1 o, 6 t, ch 3, turn. 64th Row: 15 t, 6 o, 6 t, 10 o, 3 t, 10 o, 6 t, turn. 65th Row: Slip stitch back to 4th t, ch 3, 6 t, 10 o, 3 t, 9 o, 6 t, 6 o, 6 t, 1 o, 6 t, ch 3, turn. 66th Row: 3 t, 1 o, 3 t, 1 o, 6 t, 6 o, 6 t, 2 o, 3 t, 5 o, 3 t, 9 o, 9 t, turn. 67th Row: Slip stitch back to 4th t, ch 3, 9 t, 7 o, 6 t, 6 o, 6 t, 7 o, 21 t, ch 3, turn. 68th Row: 3 t, 1 o, 3 t, 1 o, 6 t, 17 o, 6 t, 4 o, 12 t, turn. 69th Row: Slip stitch back to 4th t, ch 3, 24 t, 19 o, 6 t, 1 o, 6 t, ch 3, turn. 70th Row: 15 t, 21 o, 12 t, turn. 71st Row: Slip stitch back to 4th t, ch 3, 3 t, 7 o, 3 t, 1 o, 3 t, 1 o, 3 t, 11 o, 6 t, 1 o, 6 t, ch 3, turn. 72nd Row: 3 t, 3 o, 6 t, 11 o, 9 t, 7 o, 3 t, ch 3, turn. 73rd Row: 6 t, 3 o, 21 t, 9 o, 9 t, 1 o, 3 t, 1 o, 3 t.

DIRECTIONS FOR DIVAN COVER.

(Beginning at center scallop of narrow end.)

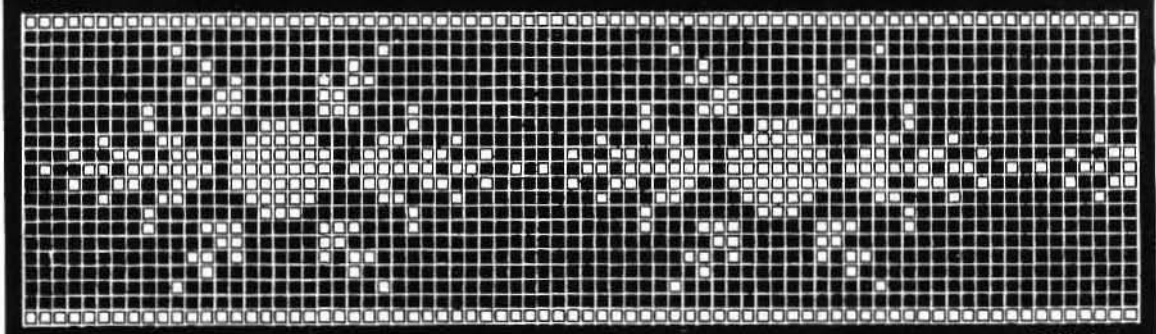
Center Scallop.

Chain 40 and 3 to turn. 1st Row: 39 t, ch 15, turn. 2nd Row: 1 t into 5th ch from hook, 17 t, 4 o, 3 t, 4 o, 6 t, 1 dt into stitch into which last t was made, 1 dt into lower twist of last dt, repeat until you have 12 dt, ch 9, turn. 3rd Row: 1 t into 5th ch from hook, 8 t, 9 o, 3 t, 9 o, 3 t, 1 dt into the stitch into which the last t was made, 1 dt into lower twist of last dt, repeat until you have 6 dt, ch 9, turn. 4th Row: 1 t



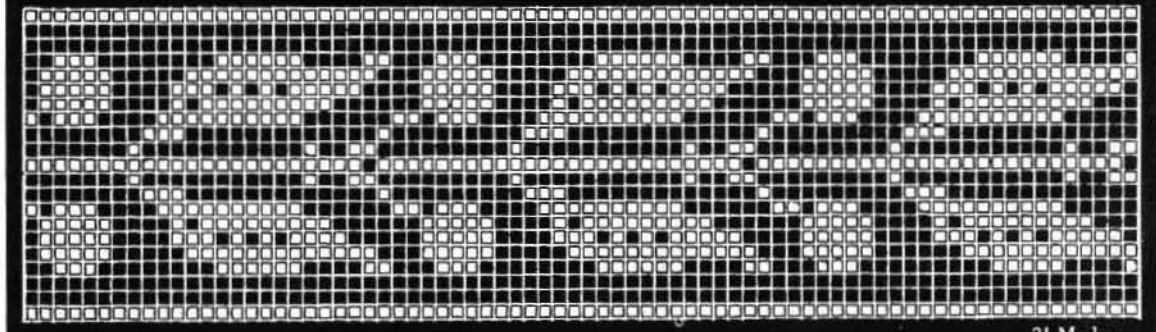
No. 32

23 Meshes



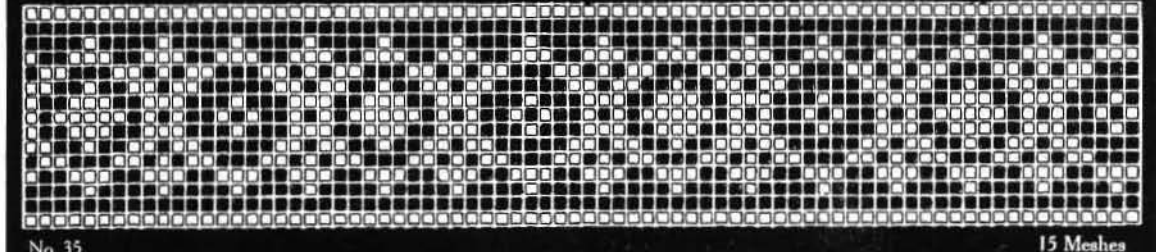
No. 33

21 Meshes



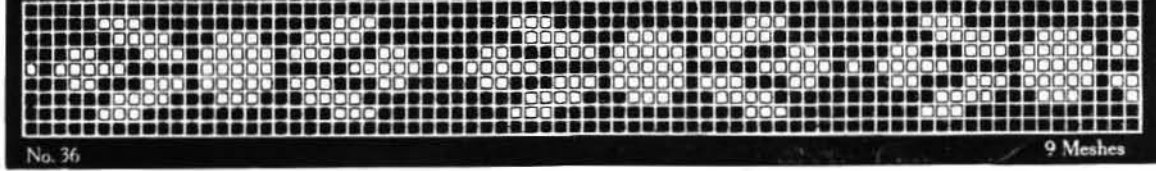
No. 34

21 Meshes



No. 35

15 Meshes



No. 36

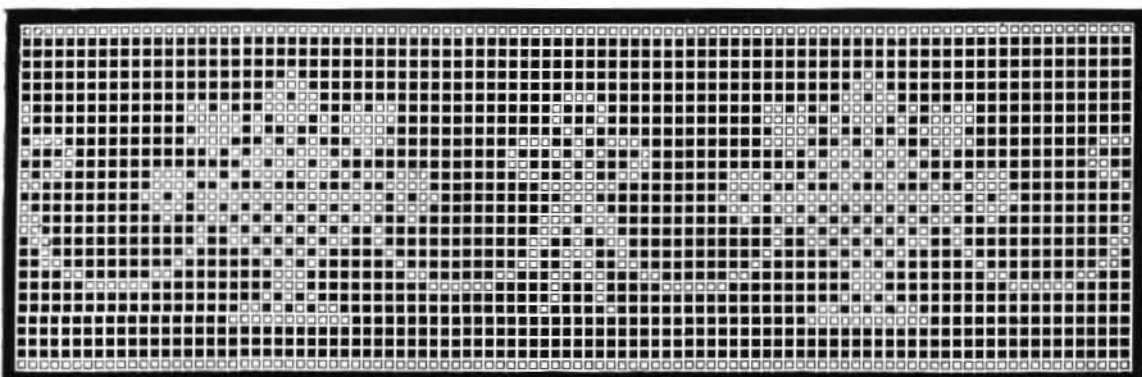
9 Meshes

PLATE IX
23



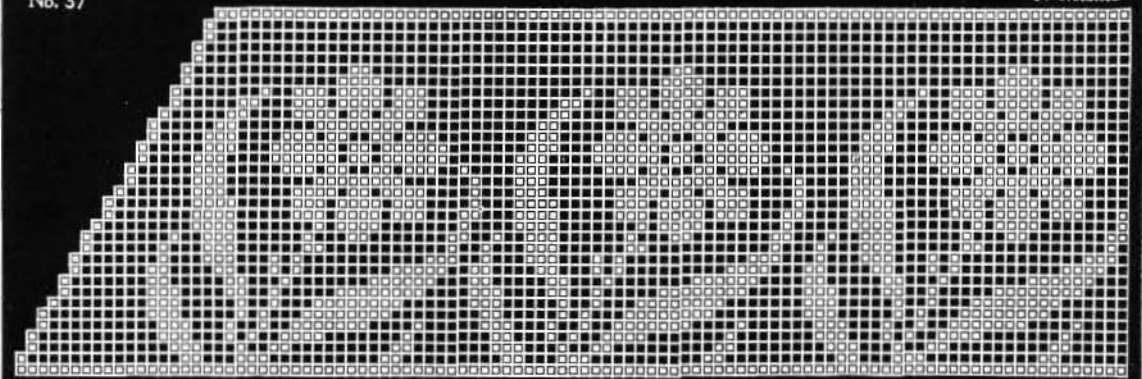
“DAISY” PILLOW

24



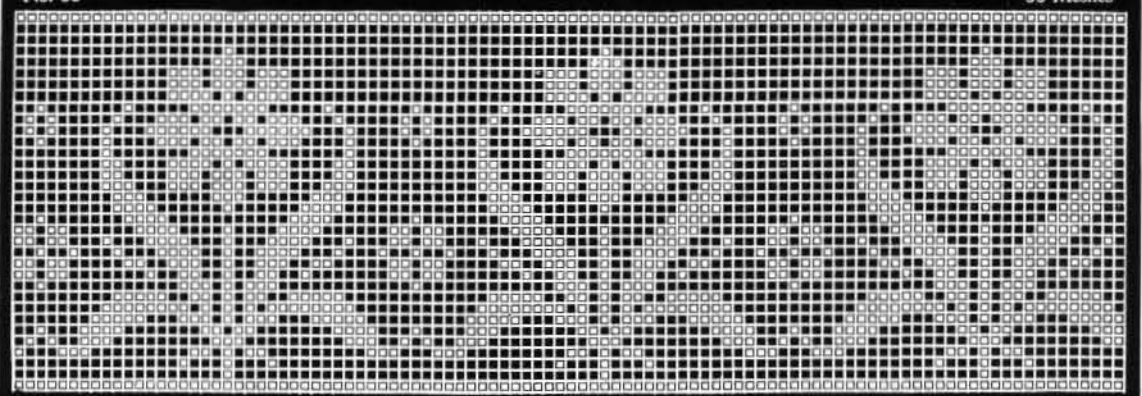
No. 37

31 Meshes



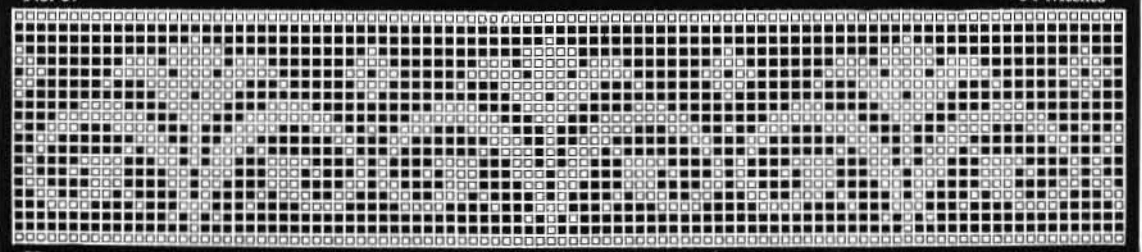
No. 38

33 Meshes



No. 39

34 Meshes



No. 40

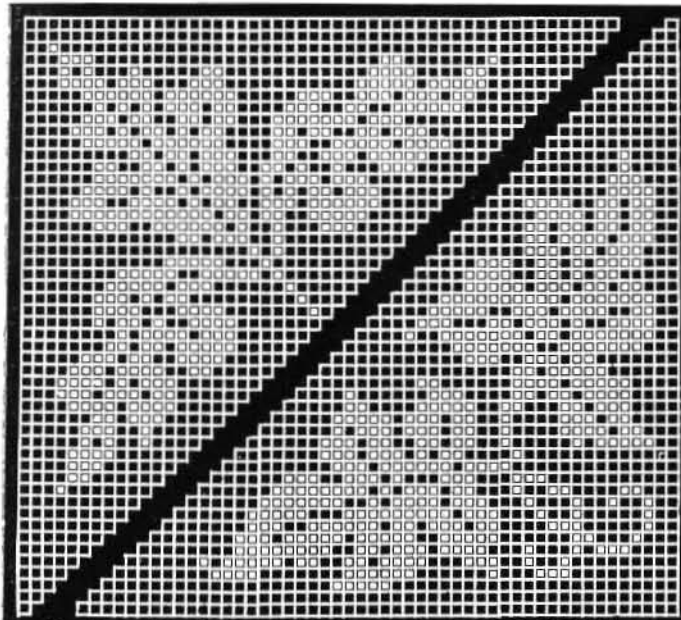
21 Meshes

PLATE X



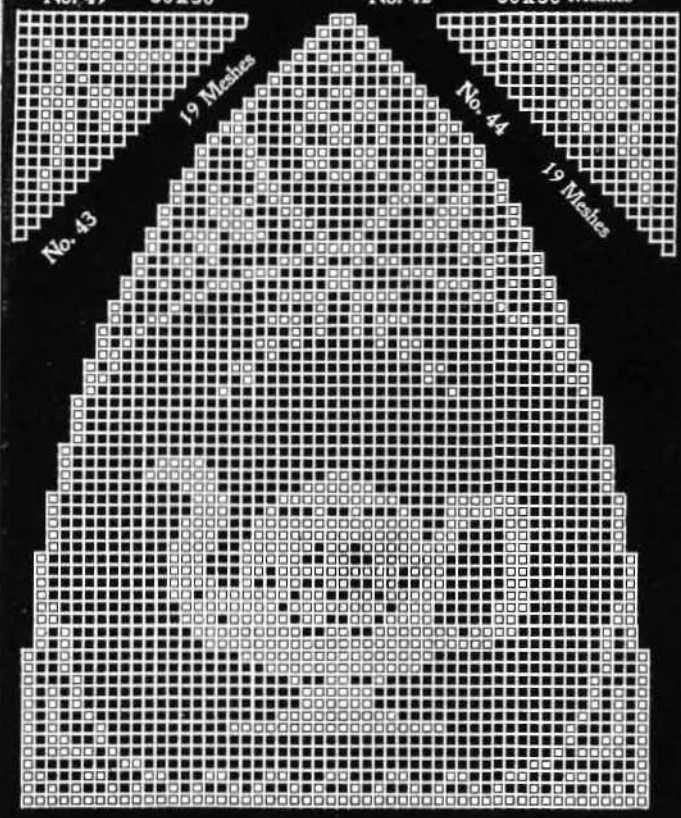
“YE OLDE ENGLISH TEA COZY”

into 5th ch from hook, 8 t, 10 o, 9 t, 10 o, 3 t, 1 dt into the stitch into which the last t was made, 1 dt into the lower twist of the last dt, repeat until you have 6 dt, ch 6, turn. 5th Row: 1 t into 5th ch from hook, 8 t, 9 o, 3 t, 1 o, 3 t, 1 o, 3 t, 1 o, 3 t, 9 o, 6 t, 1 dt into the stitch into which the last t was made, 1 dt into the lower twist of the last dt, 1 dt into the lower twist of the last dt, ch 6, turn. 6th Row: 1 t into 5th ch from hook, 5 t, 6 o, 6 t, 4 o, 6 t, 1 o, 6 t, 4 o, 6 t, 6 o, 3 t, 1 dt into the stitch into which the last t was made, 1 dt into the lower twist of the last dt, 1 dt into the lower twist of the last dt, ch 6, turn. 7th Row: 1 t into 5th ch from hook, 5 t, 5 o, 18 t, 2 o, 3 t, 3 o, 3 t, 2 o, 18 t, 5 o, 3 t, 1 dt into the stitch into which the last t was made, 1 dt into the lower twist of the last dt, 1 dt into the lower twist



No. 41 50 x 50

No. 42 50 x 50 Meshes



No. 43

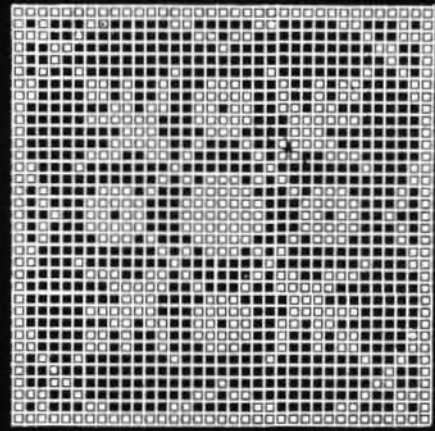
19 Meshes

No. 44

19 Meshes

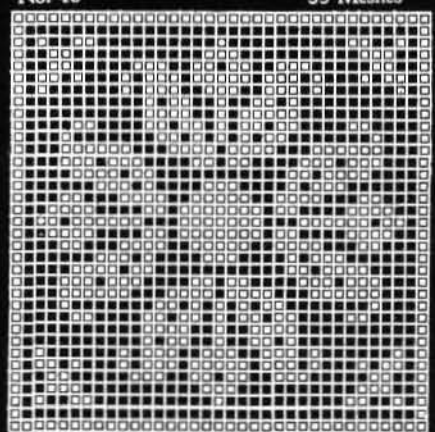
No. 45

52 x 66 Meshes



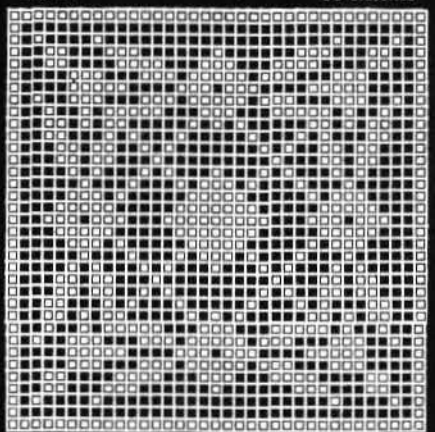
No. 46

35 Meshes



No. 47

35 Meshes



No. 48

35 Meshes



No. 49

5 Meshes

PLATE XI

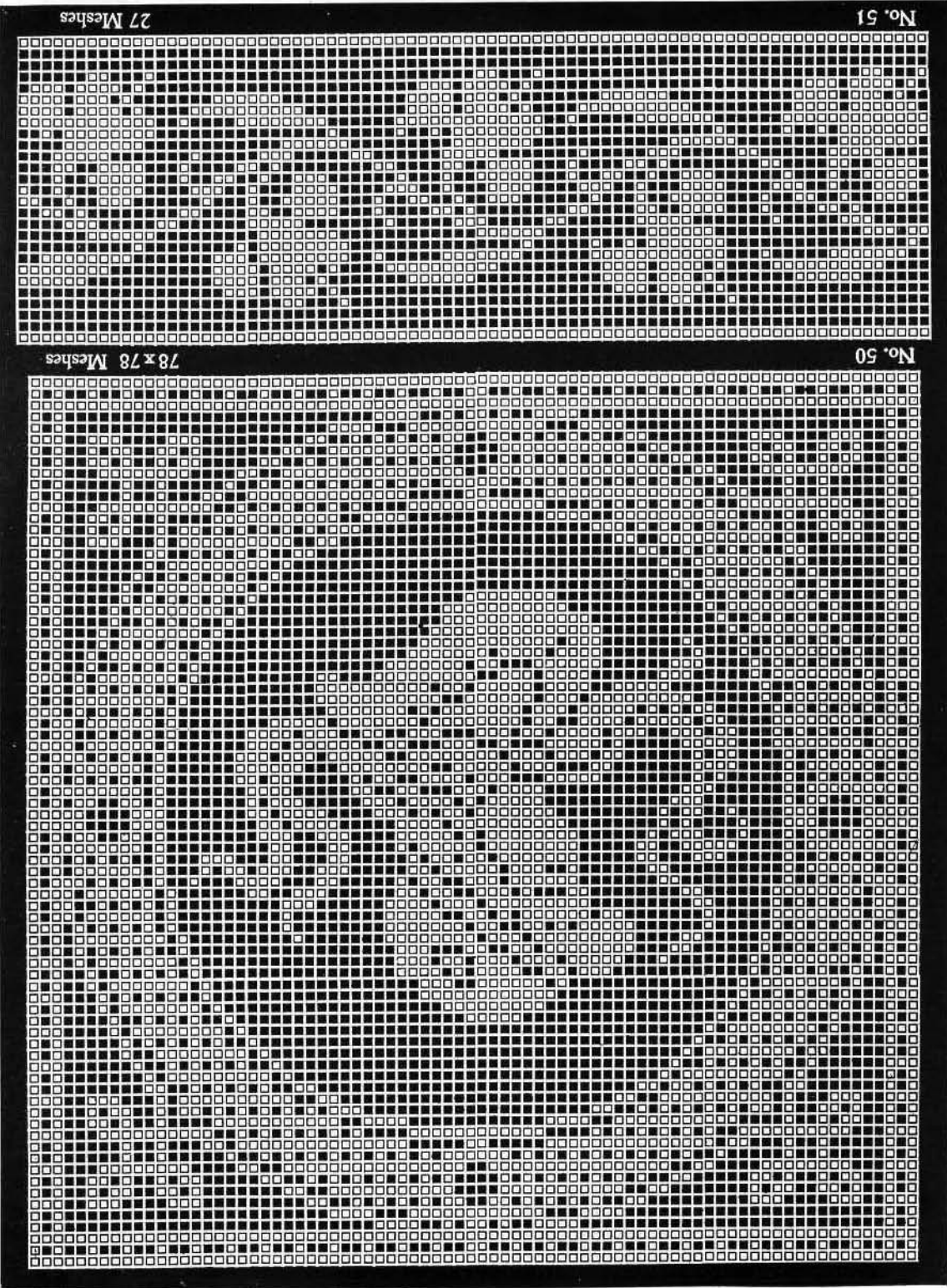
of the last dt, ch 9, turn. 8th Row: 1 t into 5th ch from hook, 8 t, 4 o, 9 t, 3 o, 9 t, 1 o, 3 t, 3 o, 3 t, 1 o, 9 t, 3 o, 9 t, 4 o, 3 t, 1 dt into the stitch into which the last t was made. 1dt into lower twist of last dt, repeat until you have 6 dt, break off thread and fasten.

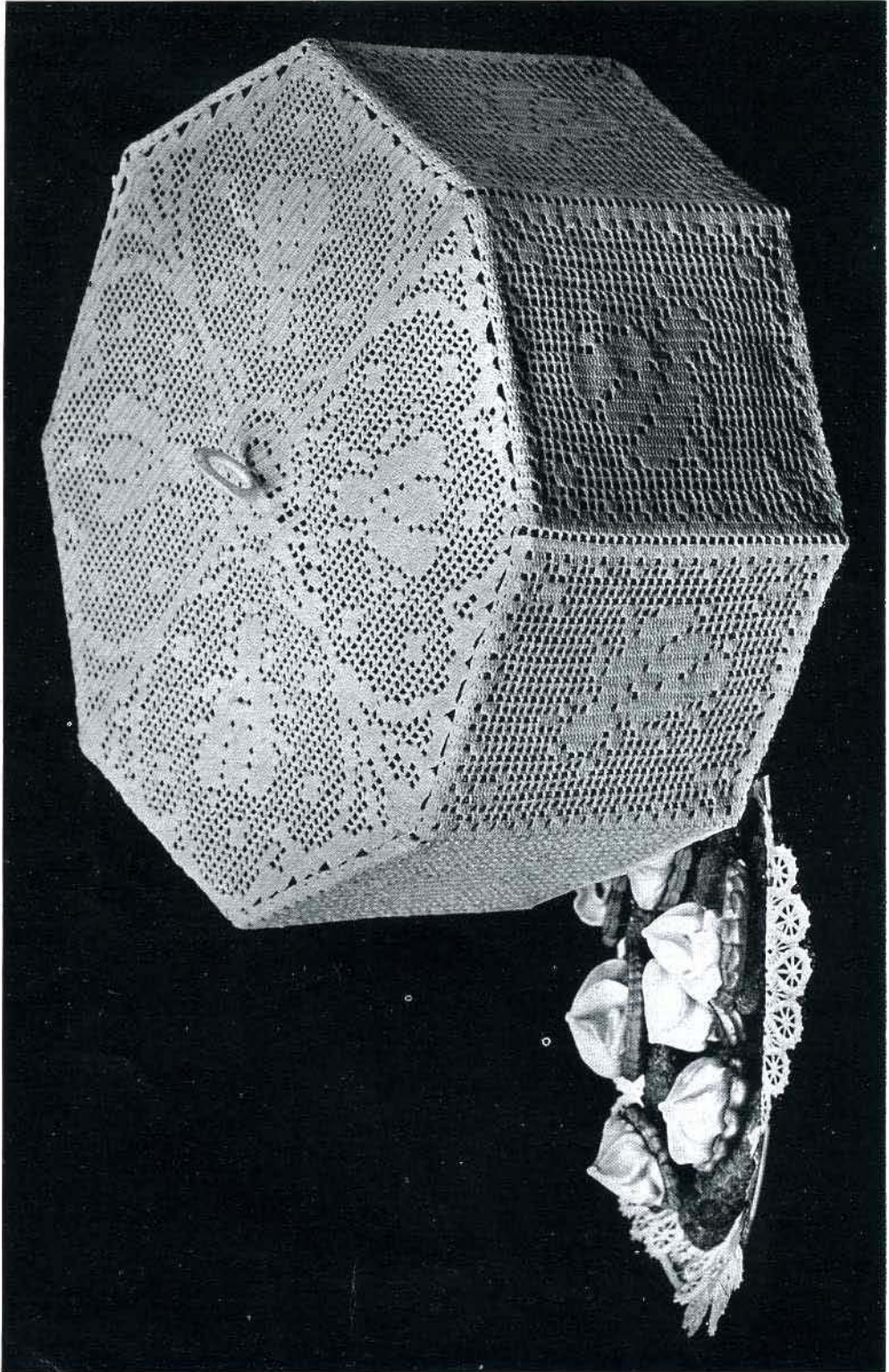
This completes the Center Scallop on the end.

Corner.

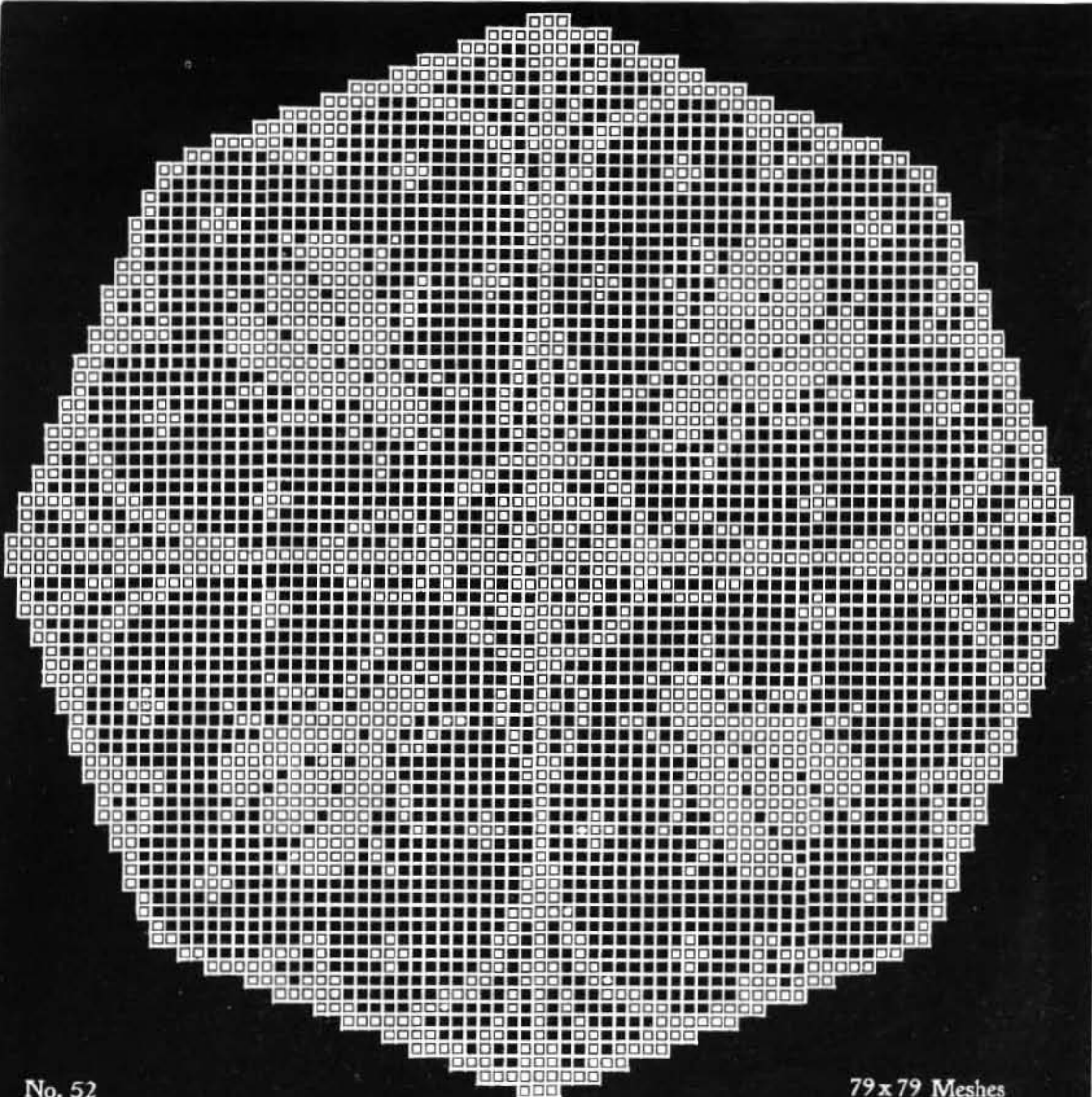
Chain 28, add 3 ch to turn. 1st Row: 27 t, ch 9, turn. 2nd Row: 1 t into 5th ch from hook, 11 t, 6 o, 3 t, 1 dt into the same stitch into which the last t was made, 1 dt into the lower twist of the last dt, repeat until you have 12 dt, ch 12, turn. 3rd Row: 1 t into 5th ch from hook, 11 t, 13 o, 3 t, 1 dt into same st into which the last t was made, 1 dt into lower twist of last dt, repeat until you have 6 dt, ch 3, turn. 4th Row: 3 t, 12 o, 3 t, 5 o, 3 t, 1 dt into same st into which the last t was made. 1 dt into lower twist of last dt, repeat until you have 6 dt, ch 9, turn. 5th Row: 1 t into 5th ch from hook, 11 t, 5 o, 3 t, 11 o, 3 t, 1 o, 3 t, 1 dt into same st into which last t was made, 1 dt in the lower twist of the last dt, 1 dt into lower twist of last dt, ch 3, turn. 6th Row: 3 t, 3 o, 6 t, 2 o, 9 t, 4 o, 3 t, 6 o, 3 t, 1 o, 3 t, 1 dt into same stitch into which the last t was made, 1 dt into lower twist of last dt, repeat until you have 6 dt, ch 6, turn. 7th Row: 1 t into 5th ch from hook, 5 t, 2 o, 3 t, 4 o, 9 t, 3 o, 6 t, 2 o, 15 t, 3 o, 3 t, 1 dt into same st into which the last t was made, 1 dt into lower twist of last dt, 1 dt into lower twist of last dt, ch 3, turn. 8th Row: 6 t, 4 o, 3 t, 5 o, 6 t, 2 o, 6 t, 2 o, 6 t, 2 o, 3 t, 3 o, 3 t, 1 dt into same st into which last t was made, 1 dt into lower twist of last dt, 1 dt into lower twist of the last dt, ch 9, join to center scallop. Repeat directions of corner scallop and join to other side of center scallop. 9th Row: Start at outer edge of corner scallop, ch 3, 3 t, 5 o, 3 t, 6 o, 3 t, 1 o, 6 t, 4 o, 6 t, 2 o, 3 t, 3 o, 15 t, 5 o, 6 t, 7 o, 6 t, 5 o, 6 t, 7 o, 6 t, 4 o, 18 t, 3 o, 3 t, 2 o, 6 t, 4 o, 6 t, 1 o, 3 t, 6 o, 3 t, 5 o, 3 t, ch 3, turn. 10th Row: 3 t, 4 o, 6 t, 2 o, 6 t, 2 o, 3 t, 1 o, 6 t, 5 o, 3 t, 2 o, 6 t, 3 o, 6 t, 5 o, 3 t, 1 o, 6 t, 2 o, 9 t, 4 o, 3 t, 3 o, 3 t, 4 o, 9 t, 2 o, 6 t, 1 o, 3 t, 5 o, 6 t, 3 o, 6 t, 2 o, 3 t, 5 o, 6 t, 1 o, 3 t, 2 o, 6 t, 2 o, 6 t, 4 o, 3 t, ch 3, turn. 11th Row: 3 t, 4 o, 3 t, 3 o, 6 t, 3 o, 6 t, 2 o, 3 t, 3 o, 3 t, 2 o, 6 t, 4 o, 9 t, 4 o, 6 t, 2 o, 15 t, 3 o, 6 t, 1 o, 6 t, 3 o, 15 t, 2 o, 6 t, 4 o, 9 t, 4 o, 6 t, 2 o, 3 t, 3 o, 3 t, 2 o, 6 t, 3 o, 6 t, 3 o, 3 t, 4 o, 3 t, ch 3, turn. 12th Row: 3 t, 4 o, 3 t, 5 o, 3 t, 2 o, 6 t, 2 o, 3 t, 2 o, 6 t, 3 o, 3 t, 5 o, 6 t, 4 o, 9 t, 1 o, 3 t, 3 o, 6 t, 3 o, 9 t, 3 o, 6 t, 3 o, 3 t, 1 o, 9 t, 4 o, 6 t, 5 o, 3 t, 3 o, 6 t, 2 o, 3 t, 5 o, 3 t, 4 o, 3 t, ch 3, turn. 13th Row: 3 t, 5 o, 6 t, 4 o, 3 t, 2 o, 3 t, 3 o, 9 t, 4 o, 3 t, 6 o, 6 t, 4 o, 6 t, 5 o, 6 t, 3 o, 3 t, 1 o, 3 t, 3 o, 6 t, 5 o, 6 t, 4 o, 6 t, 6 o, 3 t, 4 o, 9 t, 3 o, 3 t, 2 o, 3 t, 4 o, 6 t, 5 o, 3 t, ch 3, turn. 14th Row: 6 t, 4 o, 12 t, 3 o, 3 t, 1 o, 6 t, 5 o, 3 t, 3 o, 3 t, 1 o, 9 t, 3 o, 3 t, 5 o, 6 t, 2 o, 9 t, 3 o, 6 t, 1 o, 6 t, 3 o, 9 t, 2 o, 6 t, 5 o, 3 t, 3 o, 9 t, 1 o, 3 t, 3 o, 3 t, 5 o, 6 t, 1 o, 3 t, 3 o, 12 t, 4 o, 6 t, 4 o, 18 t, 4 o, 3 t, 3 o, 3 t, 4 o, 18 t, 4 o, 6 t, 2 o, 6 t, 1 o, 12 t, 8 o, 6 t, 3 o, 6 t, 8 o, 12 t, 1 o, 6 t, 2 o, 6 t, 4 o, 4 o, 18 t, 4 o, 3 t, 3 o, 3 t, 4 o, 18 t, 4 o, 6 t, 2 o, 6 t, 1 o, 12 t, 8 o, 6 t, 3 o, 6 t, 8 o, 3 t, ch 3, turn. 16th Row: 3 t, 1 o, 3 t, 5 o, 18 t, 1 o, 6 t, 7 o, 3 t, 6 o, 3 t, 2 o, 6 t, 5 o, 6 t, 6 o, 3 t, 3 o, 3 t, 6 o, 6 t, 5 o, 6 t, 2 o, 3 t, 6 o, 3 t, 7 o, 6 t, 1 o, 21 t, 4 o, 3 t, 1 o, 3 t, ch 3, turn. 17th Row: 3 t, 2 o, 6 t, 1 o, 9 t, 3 o, 9 t, 1 o, 6 t, 5 o, 6 t, 6 o, 3 t, 3 o, 6 t, 11 o, 3 t, 5 o, 3 t, 11 o, 6 t, 3 o, 3 t, 6 o, 6 t, 5 o, 6 t, 1 o, 9 t, 3 o, 9 t, 1 o, 6 t, 2 o, 3 t, ch 3, turn. 18th Row: 3 t, 4 o, 6 t, 7 o, 6 t, 1 o, 9 t, 2 o, 6 t, 3 o, 3 t, 2 o, 6 t, 4 o, 6 t, 2 o, 3 t, 3 o, 6 t, 2 o, 9 t, 1 o, 6 t, 7 o, 6 t, 4 o, 3 t, ch 3, turn. 19th Row: 6 t, 3 o, 3 t, 3 o, 6 t, 5 o, 3 t, 2 o, 9 t, 6 o, 9 t, 6 o, 12 t, 4 o, 9 t, 2 o, 3 t, 1 o, 3 t, 2 o, 9 t, 4 o, 12 t, 6 o, 9 t, 6 o, 9 t, 2 o, 6 t, 4 o, 6 t, 3 o, 3 t, 3 o, 6 t, turn. 20th Row: Slip stitch back to 4th t, ch 3, 3 t, 3 o, 3 t, 5 o, 3 t, 4 o, 3 t, 2 o, 3 t, 9 o, 3 t, 9 o, 21 t, 5 o, 3 t, 5 o, 21 t, 9 o, 3 t, 9 o, 3 t, 2 o, 3 t, 4 o, 3 t, 5 o, 3 t, 3 o, 3 t, ch 3, turn. 21st Row: 3 t, 4 o, 3 t, 4 o, 3 t, 4 o, 21 t, 4 o, 3 t, 4 o, 3 t, 4 o, 3 t, ch 3 turn. 22nd Row: 6 t, 3 o, 6 t, 2 o, 6 t, 5 o, 3 t, 1 o, 3 t, 4 o, 3 t, 7 o, 3 t, 1 o, 3 t, 7 o, 3 t, 1 o, 3 t, 6 o, 3 t, 6 o, 3 t, 1 o, 3 t, 7 o, 3 t, 1 o, 3 t, 7 o, 3 t, 4 o, 3 t, 1 o, 3 t, 5 o, 6 t, 2 o, 6 t, 3 o, 6 t, turn. 23rd Row: Slip stitch back to 4th t, ch 3, 6 t, 3 o, 12 t, 1 o, 3 t, 4 o, 3 t, 1 o, 3 t, 1 o, 6 t, 2 o, 9 t, 1 o, 9 t, 3 o, 9 t, 1 o, 9 t, 3 o, 9 t, 1 o, 6 t, 1 o, 6 t, 1 o, 9 t, 3 o, 9 t, 1 o, 9 t, 3 o, 9 t, 1 o, 9 t, 2 o, 6 t, 1 o, 3 t, 1 o, 3 t, 6 o, 12 t, 3 o, 6 t, ch 3, turn. 24th Row: 9 t, 6 o, 3 t, 4 o, 3 t, 2 o, 3 t, 1 o, 9 t, 2 o, 15 t, 5 o, 15 t, 5 o, 12 t, 3 o, 12 t, 5 o, 15 t, 5 o, 15 t, 2 o, 9 t, 1 o, 3 t, 2 o, 3 t, 11 o, 9 t, turn. 25th Row: Slip stitch back to 4th t, ch 3, 3 t, 1 o, 6 t, 8 o, 6 t, 2 o, 3 t, 2 o, 6 t, 3 o, 3 t, 1 o, 3 t, 3 o, 3 t, 3 o, 3 t, 1 o, 3 t, 3 o, 3 t, 3 o, 3 t, 3 o, 6 t, 5 o, 6 t, 3 o, 3 t, 3 o, 3 t, 1 o, 3 t, 3 o, 3 t, 3 o, 3 t, 1 o, 3 t, 3 o, 6 t, 2 o, 3 t, 2 o, 6 t, 8 o, 6 t, 1 o, 3 t, ch 3, turn. 26th Row: 6 t, 2 o, 9 t, 3 o, 9 t, 3 o, 6 t, 3 o, 3 t, 1 o, 15 t, 5 o, 15 t, 5 o, 12 t, 3 o, 12 t, 5 o, 15 t, 5 o, 15 t, 1 o, 3 t, 3 o, 6 t, 3 o, 9 t, 3 o, 9 t, 2 o, 6 t, turn. 27th Row: Slip stitch back to 4th t, ch 3, 3 t, 3 o, 18 t, 5 o, 3 t, 1 o, 3 t, 4 o, 6 t, 1 o, 9 t, 3 o, 9 t, 1 o, 9 t, 3 o, 9 t, 1 o, 6 t, 1 o, 6 t, 1 o, 9 t, 3 o, 9 t, 1 o, 9 t, 3 o, 9 t, 1 o, 6 t, 4 o,

29
PLATE XII



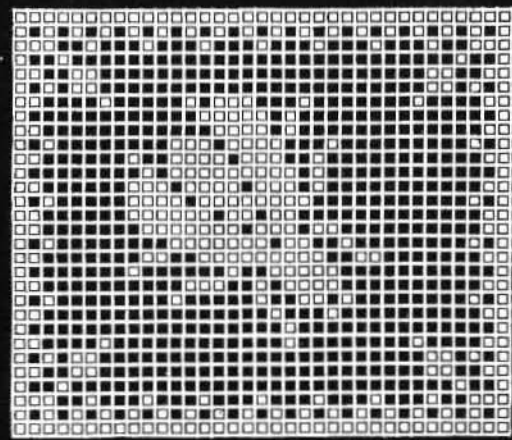
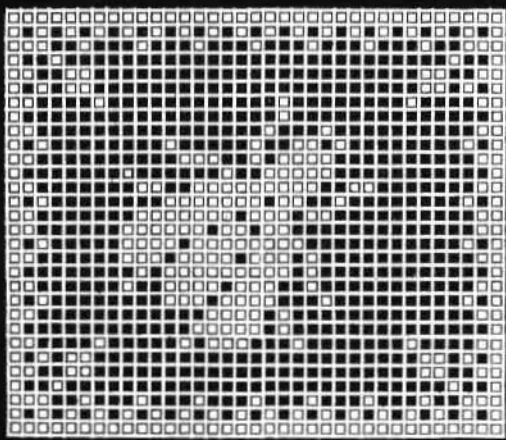


“SHOO FLY” COVER

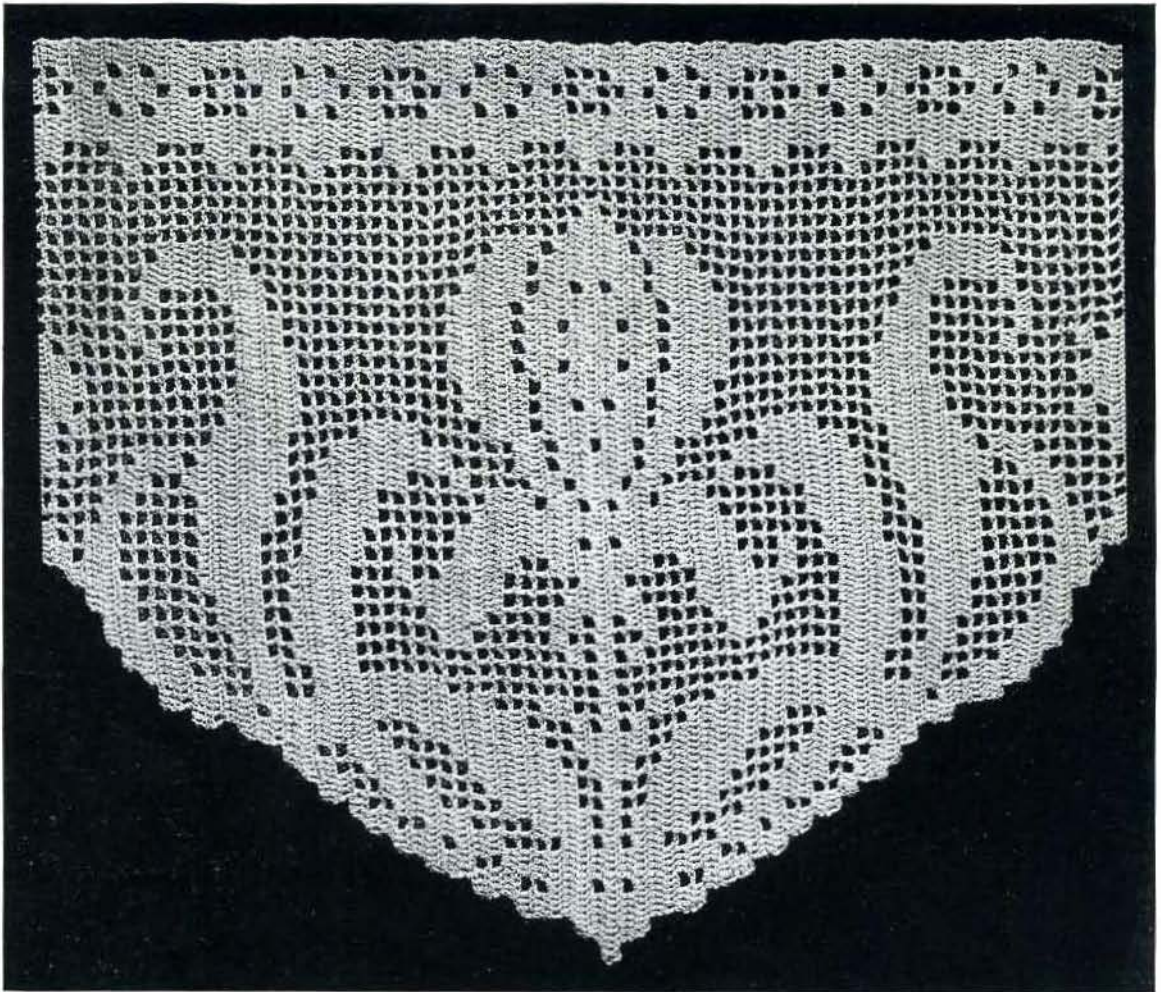


No. 52

79 x 79 Meshes



30 x 35 Meshes



ALTAR CLOTH EDGING

3 t, 1 o, 3 t, 5 o, 18 t, 3 o, 3 t, ch 3, turn. 28th Row: 6 t, 7 o, 3 t, 5 o, 3 t, 1 o, 6 t, 1 o, 6 t, 6 o, 3 t, 1 o, 3 t, 7 o, 3 t, 1 o, 3 t, 6 o, 3 t, 6 o, 3 t, 1 o, 3 t, 7 o, 3 t, 1 o, 3 t, 6 o, 6 t, 1 o, 6 t, 1 o, 3 t, 5 o, 3 t, 7 o, 6 t, turn. 29th Row: Slip stitch back to 4th t, ch 3, 6 t, 5 o, 6 t, 2 o, 3 t, 2 o, 3 t, 1 o, 15 t, 1 o, 147 t, 1 o, 15 t, 1 o, 3 t, 2 o, 3 t, 2 o, 6 t, 5 o, 6 t, turn. 30th Row: Slip stitch back to 4th t, ch 3, 6 t, 4 o, 3 t, 4 o, 3 t, 1 o, 3 t, 2 o, 3 t, 1 o, 3 t, 2 o, 3 t, 47 o, 3 t, 2 o, 3 t, 1 o, 3 t, 2 o, 3 t, 1 o, 3 t, 4 o, 3 t, 4 o, 6 t, ch 3, turn. 31st Row: 9 t, 3 o, 6 t, 3 o, 3 t, 1 o, 3 t, 1 o, 15 t, 1 o, 3 t, 1 o, 6 t, 1 o, 6 t, 1 o, 6 t, 1 o, 6 t, 1 o, 6 t, 1 o, 6 t, 1 o, 9 t, 1 o, 6 t, 1 o, 6 t, 1 o, 6 t, 1 o, 6 t, 1 o, 6 t, 1 o, 6 t, 1 o, 3 t, 1 o, 15 t, 1 o, 3 t, 1 o, 3 t, 3 o, 6 t, 3 o, 9 t, ch 3, turn. 32nd Row: 3 t, 1 o, 6 t, 3 o, 3 t, 2 o, 6 t, 1 o, 3 t, 1 o, 6 t, 1 o, 6 t, 1 o, 3 t, 47 o, 3 t, 1 o, 6 t, 1 o, 6 t, 1 o, 3 t, 1 o, 6 t, 2 o, 3 t, 3 o, 6 t, 1 o, 3 t, ch 6, turn. 33rd Row: 1 t in 5th ch from hook, 5 t, 3 o, 3 t, 3 o, 9 t, 2 o, 3 t, 1 o, 3 t, 3 o, 3 t, 1 o, 3 t, 1 o, 3 t, 43 o, 3 t, 1 o, 3 t, 1 o, 3 t, 3 o, 3 t, 1 o, 3 t, 2 o, 9 t, 3 o, 3 t, 3 o, 6 t, ch 3 turn. 34th Row: 3 t, 5 o, 3 t, 7 o, 6 t, 5 o, 6 t, 1 o, 3 t, 43 o, 3 t, 1 o, 6 t, 5 o, 6 t, 7 o, 3 t, 5 o, 3 t, ch 6, turn. 35th Row: 1 t in 5th ch from hook, 5 t, 4 o, 3 t, 1 o, 3 t, 4 o, 3 t, 1 o, 3 t, 3 o, 3 t, 3 o, 3 t, 27 o, 3 t, 19 o, 3 t, 3 o, 3 t, 3 o, 3 t, 1 o, 3 t, 4 o, 3 t, 1 o, 3 t, 4 o, 6 t, ch 6, turn. 36th Row: 1 t in 5th ch from hook, 5 t, 4 o, 6 t, 2 o, 3 t, 1 o, 6 t, 2 o, 6 t, 5 o, 6 t, 1 o, 3 t, 16 o, 3 t, 8 o, 3 t, 17 o, 3 t, 1 o, 6 t, 5 o, 6 t, 2 o, 6 t, 1 o, 3 t, 2 o, 6 t, 4 o, 3 t, 1 dt into same st into which last t was made, 1 dt into lower twist of last dt, 1 dt

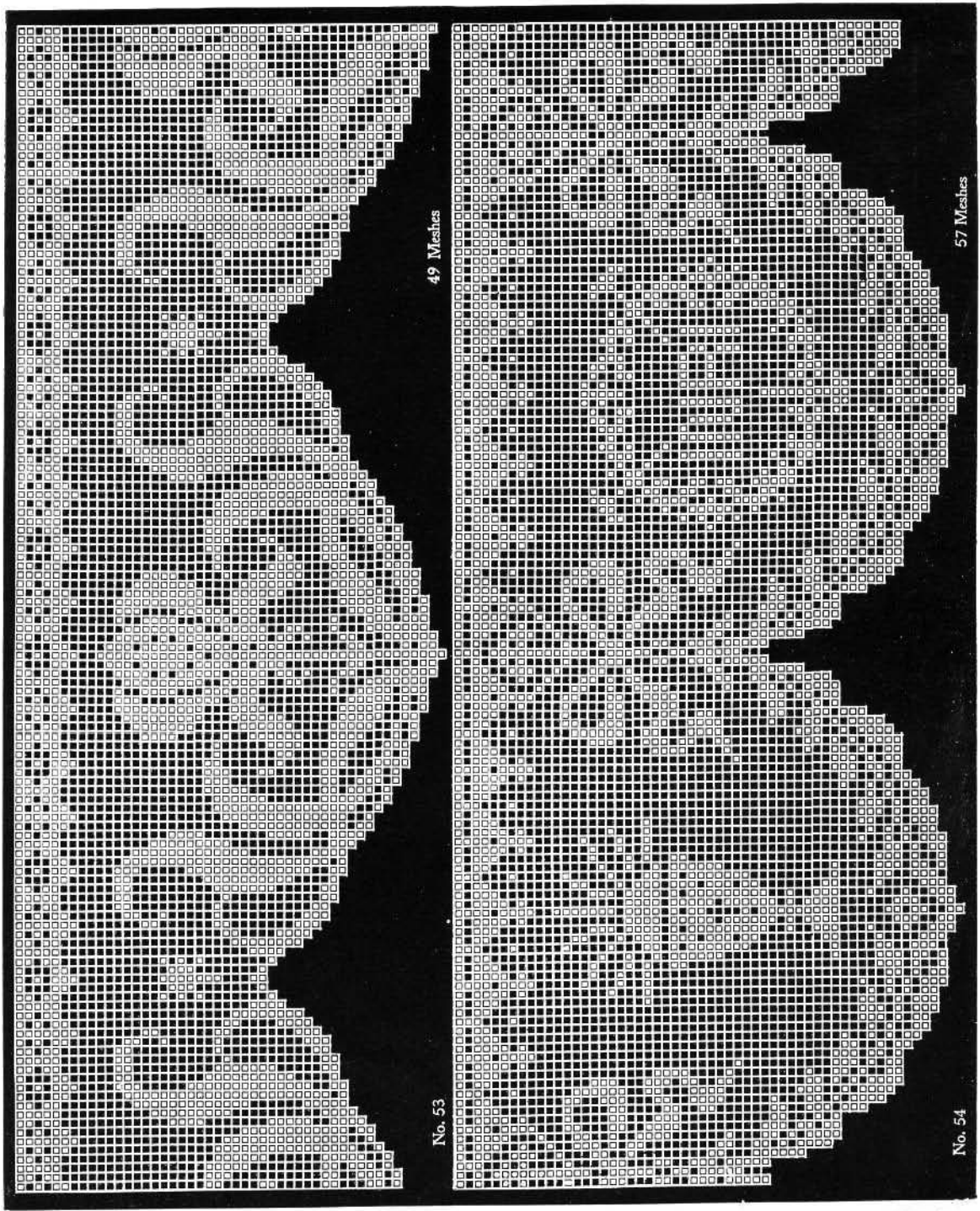


PLATE XIV



COVER DESIGN

into lower twist of last dt, ch, 6 turn. 37th Row: 1 t in 5th ch from hook, 5 t, 5 o, 6 t, 3 o, 3 t, 4 o, 3 t, 1 o, 3 t, 3 o, 3 t, 1 o, 3 t, 1 o, 3 t, 18 o, 3 t, 6 o, 6 t, 16 o, 3 t, 1 o, 3 t, 1 o, 3 t, 3 o, 3 t, 1 o, 3 t, 4 o, 3 t, 3 o, 6 t, 5 o, 3 t, 1 dt into same st into which last t was made, 1 dt into lower twist of last dt, 1 dt into lower twist of last dt, ch 3, turn. 38th Row: 3 t, 3 o, 3 t, 1 o, 6 t, 5 o, 3 t, 3 o, 3 t, 1 o, 6 t, 1 o, 6 t, 1 o, 3 t, 14 o, 3 t, 4 o, 6 t, 5 o, 3 t, 20 o, 3 t, 1 o, 6 t, 1 o, 6 t, 1 o, 3 t, 3 o, 3 t, 5 o, 6 t, 1 o, 3 t, 3 o, 3 t, ch 6, turn. 39th Row: 1 t in 5th ch from hook, 5 t, 4 o, 6 t, 6 o, 6 t, 2 o, 3 t, 1 o, 15 t, 1 o, 3 t, 1 o, 3 t, 17 o, 3 t, 4 o, 6 t, 7 o, 3 t, 11 o, 3 t, 1 o, 3 t, 1 o, 15 t, 1 o, 3 t, 2 o, 6 t, 6 o, 6 t, 4 o, 6 t, ch 3, turn. 40th Row: 3 t, 10 o, 3 t, 3 o, 6 t, 1 o, 3 t, 2 o, 3 t, 1 o, 3 t, 2 o, 3 t, 1 o, 3 t, 11 o, 3 t, 8 o, 15 t, 6 o, 6 t, 10 o, 3 t, 1 o, 3 t, 2 o, 3 t, 1 o, 6 t, 1 o, 3 t, 1 o, 6 t, 3 o, 3 t, 10 o, 3 t, ch 6, turn. 41st Row: 1 t in 5th ch from hook, 5 t, 7 o, 3 t, 2 o, 6 t, 2 o, 6 t, 1 o, 3 t, 1 o, 15 t, 1 o, 3 t, 11 o, 3 t, 2 o, 3 t, 2 o, 9 t, 4 o, 12 t, 4 o, 3 t, 14 o, 3 t, 1 o, 15 t, 1 o, 3 t, 1 o, 6 t, 2 o, 6 t, 2 o, 3 t, 7 o, 6 t, ch 3, turn. 42nd Row: 3 t, 2 o, 3 o, 6 o, 12 t, 3 o, 9 t, 1 o, 6 t, 1 o, 6 t, 1 o, 3 t, 1 o, 3 t, 13 o, 15 t, 6 o, 6 t, 2 o, 3 t, 1 o, 3 t, 12 o, 3 t, 1 o, 3 t, 1 o, 6 t, 1 o, 6 t, 1 o, 9 t, 3 o, 12 t, 6 o, 3 t, 2 o, 3 t, ch 3, turn. 43rd Row: 3 t, 3 o, 3 t, 3 o, 9 t, 6 o, 9 t, 1 o, 3 t, 3 o, 3 t, 1 o, 3 t, 1 o, 3 t, 12 o, 6 t, 5 o, 3 t, 7 o, 3 t, 15 o, 3 t, 1 o, 3 t, 1 o, 3 t, 3 o, 3 t, 1 o, 9 t, 6 o, 9 t, 3 o, 3 t, 3 o, 3 t, ch 6, turn. 44th Row: 1 t in 5th ch from hook, 5 t, 3 o, 3 t, 1 o, 21 t, 5 o, 9 t, 5 o, 6 t, 16 o, 3 t, 1 o, 3 t, 5 o, 3 t, 7 o, 3 t, 14 o, 6 t, 5 o, 9 t, 5 o, 21 t, 1 o, 3 t, 3 o, 6 t, ch 3, turn. These instructions show plainly the treatment of the uneven edge, the rest of the design can easily be copied from pattern Plate No. XIV.

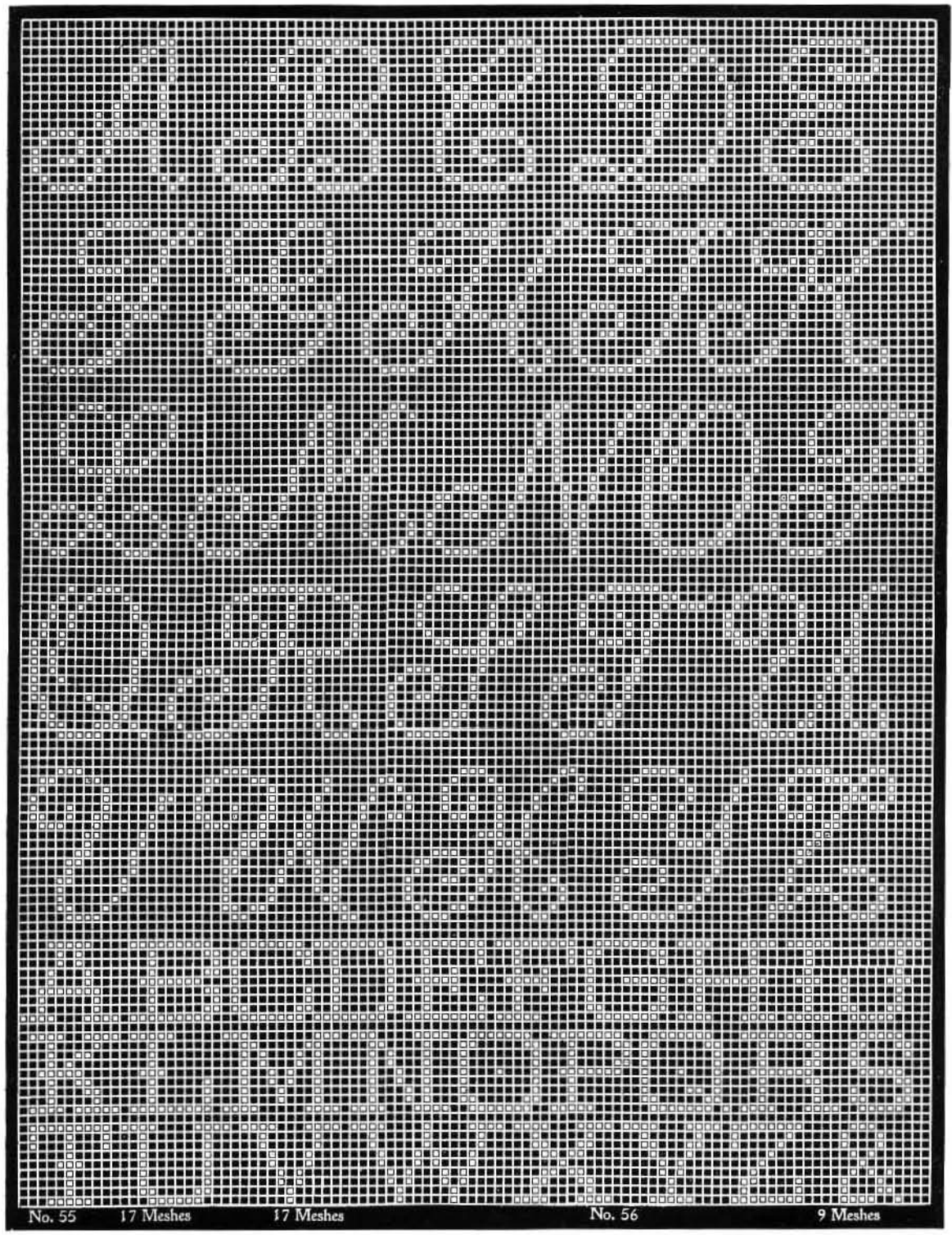
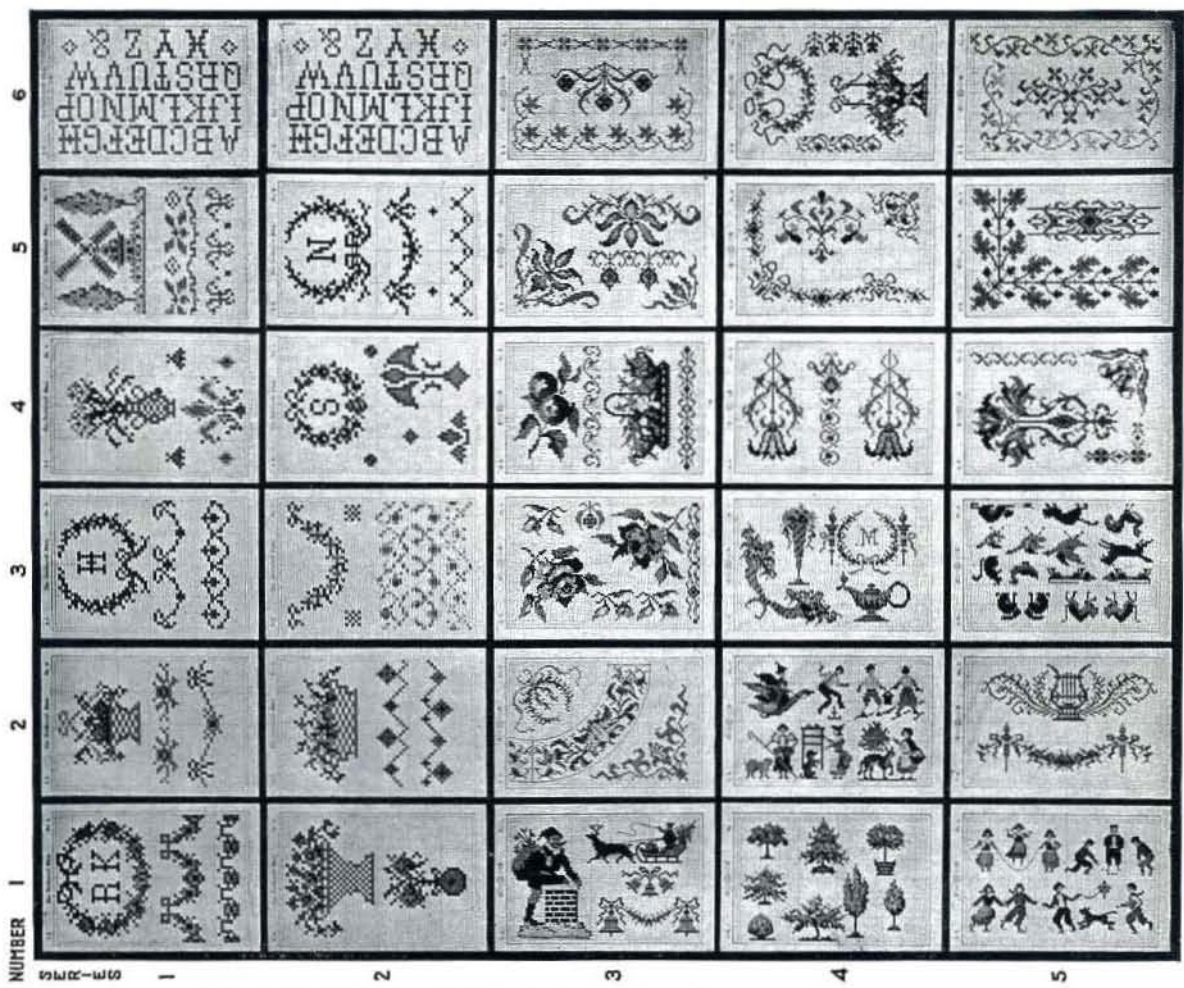


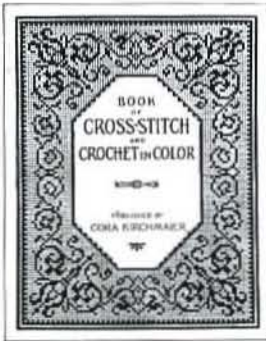
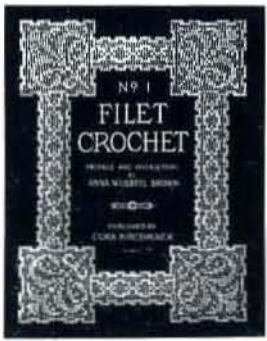
PLATE XV



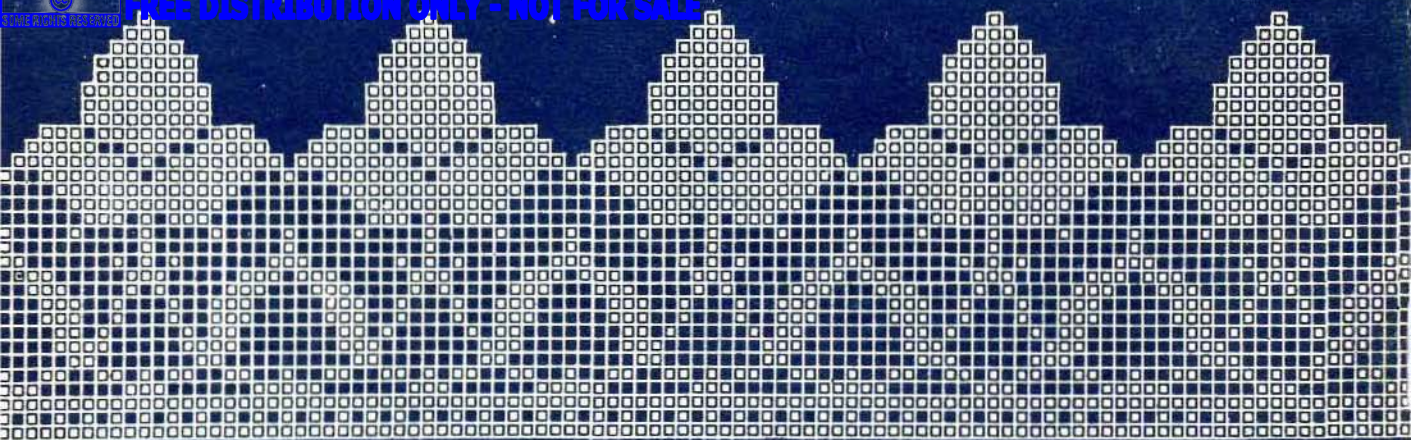
THE KIRCHMAIER NEEDLECRAFT SHOP CROSS-STITCH PATTERNS

Thirty cards, comprising Series 1 to 5, printed in beautiful colors, and suitable for guests' towels, napkins, lunch-cloths, babies' and children's requirements, library table runners, pillows, etc.

NEW, ORIGINAL AND ATTRACTIVE DESIGNS



EASY TO COUNT . . . EASY TO WORK



TRADE  MARK

