

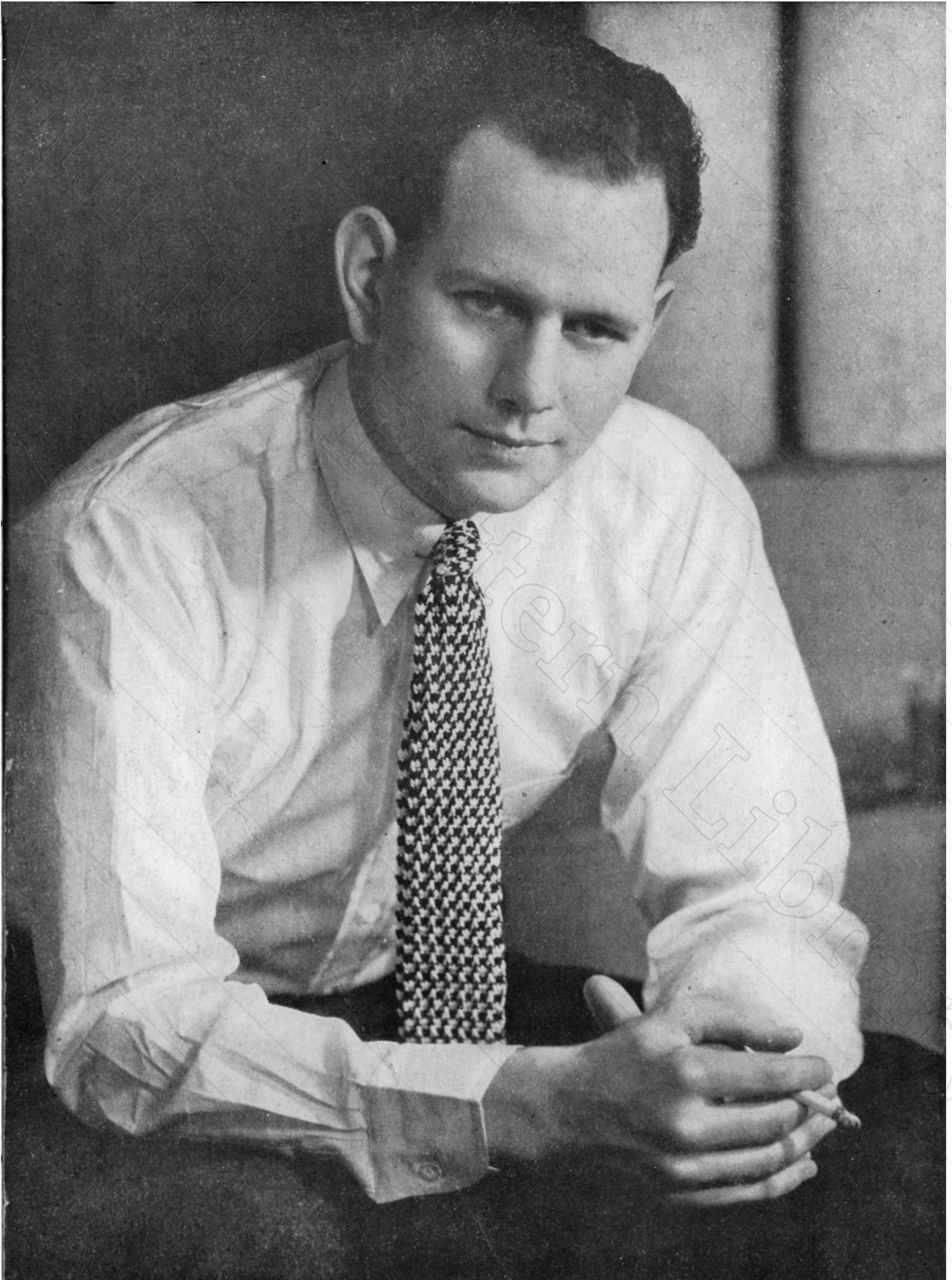
MINERVA

NECKTIES



DOVER
No 3324

VOLUME 33-A PRICE 5 CENTS



THE YORK

No. 3325—INSTRUCTIONS ON PAGE 11

[2]



THE GRAYDON

No. 3326—INSTRUCTIONS ON PAGE 12

[3]



THE BANKTON

No. 3327—INSTRUCTIONS ON PAGE 12

[4]



THE BROOKS

No. 3328—INSTRUCTIONS ON PAGE 13

[5]



THE STEWART

No. 3329—INSTRUCTIONS ON PAGE 13

[6]



THE GORDON

No. 3330—INSTRUCTIONS ON PAGE 14

[7]



THE LEITH

No. 3331—INSTRUCTIONS ON PAGE 14

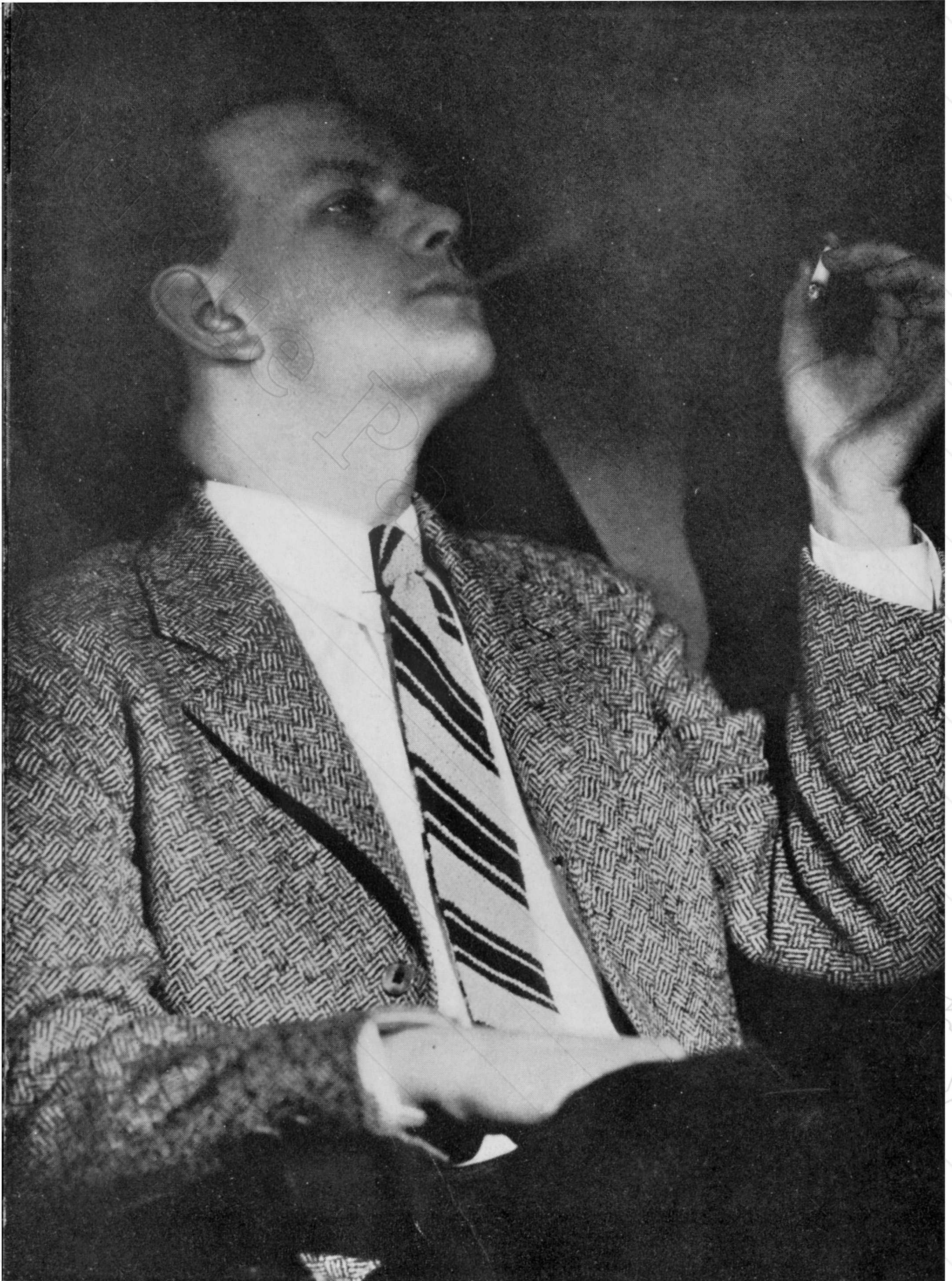
[8]



THE WHITNEY

No. 3332—INSTRUCTIONS ON PAGE 15

[9]



THE WALES

No. 3333—INSTRUCTIONS ON PAGE 15

INSTRUCTIONS

THE DOVER No. 3324 NECKTIE

(Illustrated on Cover)

1 No. 8 Steel Crochet Hook

Scale:—3 Shells to 1 inch

MINERVA VELVEEN

1 Ball

Chain 22.

Row 1—1 S. C. in 3rd Ch. from hook *
Ch. 2, 2 D. C. in same Ch., skip 2 Ch.,
1 S. C. in next Ch., repeat from * across
row, Ch. 2, turn.

Row 2—1 S. C. in Ch. 2 of last shell of
previous row, * Ch. 2, 2 D. C. in same

space, 1 S. C. in Ch. 2 of next shell,
repeat from * across row.

Continue Row 2 for 13 inches even, then
decrease by skipping 1 shell in center of
tie every $1\frac{1}{2}$ inch 3 times. On 3 shells
work 10 inches even, increase to correspond
with decreases. Work 9 inches even.

THE YORK No. 3325 NECKTIE

1 No. 8 Steel Crochet Hook

Scale:—9 sts. to 1 inch

MINERVA VELVEEN

2 Balls (1 Ball each of desired colors)

Chain 21.

Row 1—Work 1 S. C. in each Ch. (19
S. C., Ch. 1 to turn counts as 1 S. C.).
Work 5 more rows, join contrasting color,
Ch. 2, turn.

Row 7—1 S. C. in second st., * yarn over
needle, insert needle around 3rd st. of row
below, draw yarn through and work as
1 D. C., 1 S. C. in each of the next 2 sts.,
repeat from * across row, Ch. 1, turn.

Row 8—1 S. C. in each st.

Row 9—With first color work same as

Row 7 inserting the needle around the
D. C. of Row 7.

Row 10—1 S. C. in each st.

Continue as Rows 9 and 10, alternating
colors for 14 inches even, then decrease
1 st. each side every inch 4 times, then
with one color only, work in S. C. for
4 inches.

Work other end of tie the same for 8 inches
even, then decrease to correspond with
other end. Work 4 inches even and join
at center back.

THE GRAYDON No. 3326 NECKTIE

1 No. 8 Steel Crochet Hook

Scale:—10 sts. to 1 inch

MINERVA VELVEEN

Dresden Blue No. 1118—1 Ball

With Blue, Chain 27.

(It is important to crochet this pattern tightly.)

Row 1—1 D. C. in 5th Ch., 1 D. C. in each Ch. across row (23 D. C., Ch. 3 at start counts as 1 D. C.), Ch. 2, turn.

Row 2—Skip 1 st., 1 S. C. in each st., Ch. 3, turn.

Row 3—Skip 1 st., 1 D. C. in each of the next 2 sts., * Ch. 1, skip 1 st., 1 D. C. in each of the next 3 sts., repeat from * across row, Ch. 2, turn.

Row 4—Skip 1 st., * 1 S. C. in each of the next 3 sts., 1 S. C. in space, repeat from * across row, draw Black yarn through last 2 loops on hook, Ch. 2, turn.

Row 5—Skip 1 st., 1 S. C. in each of the next 2 sts., * insert hook in S. C. of Row 2,

Black No. 1136—1 Ball

below space, keeping hook in front of work, yarn over, draw up a long loop, insert needle in Ch. 1 of Row 3, draw up a loop, yarn over, through 2 loops, yarn over, through 2 loops, 1 S. C. in each of the next 3 sts., repeat from * across row, Ch. 2, turn.

Row 6—1 S. C. in each st. Change to Blue and repeat pattern from Row 1—starting the 3rd Blue row every other stripe with 1 D. C., Ch. 1, skip 1, (to make 6 points in every other Black stripe).

Work even for 13 inches.

Decrease 1 st. each side every inch 5 times, then with Blue only work 1 row S. C., 1 row D. C. alternately for 9 inches, break yarn.

Work second end to correspond with first for 8 inches. Decrease in same manner, join to neck band.

THE BANKTON No. 3327 DIAGONAL SELF STRIPE NECKTIE

1 No. 5 Steel Crochet Hook

Scale:—8 sts. to 1 inch

MINERVA VELVEEN

1 Ball

Chain 23.

Work 1 row S. C., Ch. 1, turn, (22 S. C.).

Row 2—1 S. C. in each of the next 3 sts., * yarn over, insert hook in next st. of row below (foundation Ch.), draw up a loop, yarn over, through 3 loops on hook,

1 S. C. in each of the next 3 sts., repeat from * across row, Ch. 1, turn.

Row 3—1 S. C. in each st., Ch. 1, turn.

Row 4—1 S. C. in each of the next 2 sts., repeat from * of Row 2.

Row 5—1 S. C. in each st.

Row 6—1 S. C. in first st., repeat from * of Row 2.

Row 7—1 S. C. in each st.

Continue in this manner to work the long stitch, one stitch to the right every other row.

Work even for 13 inches, then decrease 1 st. each side every inch 5 times, work even for 9 inches, increase to correspond with decreases.

Work 8 inches even.

THE BROOKS No. 3328 NECKTIE

1 No. 5 Steel Crochet Hook

Scale:—8 sts. to 1 inch

MINERVA LUSTRE FLAKE YARN

2 Balls

Chain 21.

Work 20 S. C. on Ch., Ch. 1, turn.

Row 2—1 S. C. in each st.. Ch. 1, turn.

Repeat Row 2 for 13 inches even, then de-

crease 1 st. each side every inch 5 times, work even for 9 inches, then increase to correspond with decreases.

Work 8 inches even.

THE STEWART No. 3329 NECKTIE

(STAR STITCH)

1 No. 5 Steel Crochet Hook

Scale:—5 Patterns to 1 inch

MINERVA VELVEEN

1 Ball

Chain 24.

Row 1—Skip 1 Ch., draw up a loop in each of the next 3 Chs., yarn over, through all loops, * draw up a loop in same st. as last loop, draw up a loop in each of the next 2 chains, yarn over, through 4 loops, Ch. 1, repeat from * across row, ending with 1 S. C. in same stitch as last loop, Ch. 1, turn (11 patterns).

Continue as in row 1 for 13 inches even.

Next row decrease as follows:

Work 4 patterns, work 1 pattern over 2 patterns, work 5 patterns (10 patterns in row).

Work 1 inch even, decrease in this manner 4 more times, (6 patterns), work even for 9 inches, then increase to correspond with decreases.

Work 8 inches even, finish with 1 row, 1 S. C. in each st., break yarn.

THE GORDON No 3330 NECKTIE

1 No. 8 Steel Crochet Hook

Scale:—5 Patterns to 1 inch

MINERVA SILVER CREPE YARN

2 Balls (1 Ball each of contrasting color)

Ch. 24.

Row 1—Skip 2 Ch., pull up a loop in next Ch., skip 1 Ch., pull up a loop in next Ch., yarn over and through all loops, Ch. 1, * pull up a loop in same st. as last loop, skip 1 st., pull up a loop in next st., yarn over, through all loops, Ch. 1, repeat from * across row. 1 S. C. in last Ch., Ch. 2, turn.

Row 2—Pull up a loop between the S. C. and first pattern, pull up a loop between the first and second pattern, yarn over, through all loops, Ch. 1, * pull up a loop in same space as last loop, pull up a loop in next space between sts., yarn over, through all loops on hook, Ch. 1, repeat from * across row ending with 1 S. C. in Ch. 2 at start of previous row, draw next

color through last 2 loops on hook, Ch. 2, turn. (10 Patterns).

Continue as row 2, working 2 rows light, 6 rows dark, alternately.

Work 13 inches even, then decrease 1 pattern in center of row as follows: work 5 patterns as in row 2, now pull up a loop between the next 2 patterns, pull up a loop between the next 2 patterns. Continue as row 2 (9 patterns). Work 1 inch even.

Decrease 1 pattern in same manner every inch 4 more times (5 patterns remaining).

Work even in one color only for 9 inches, then, alternating the two colors, increase to correspond with decreases and work 8 inches even.

THE LEITH No. 3331 KNITTED MOSS STITCH NECKTIE

2 No. 14 Steel Needles

Scale:—10 sts. to 1 inch

MINERVA VELVEEN

1 Ball

Cast on 49 sts.

Row 1—*K. 1 st., P. 1 st., repeat from * across row.

Repeat Row 1 for entire tie.

Work 13 inches even (without stretching), then decrease 1 st. each side every half inch 7 times (25 sts.).

Work even for 10 inches, then increase 1 st. each side every half inch 5 times, work even for 8 inches, bind off.

Sew edges of tie together and press with seam in center back.

This tie can also be made in stockinette stitch using two colors, working in stripes $\frac{1}{2}$ inch in width.

THE WHITNEY No. 3332 NECKTIE

1 No. 5 Steel Crochet Hook

Scale:—8 sts. to 1 inch

MINERVA VELVEEN

1 Ball

Chain 21, 1 S. C. in each Ch. (20 S. C.),
Ch. 1, turn.

Row 2—(Right side of work) 1 S. C. in
each of the next 2 sts., yarn over, *
insert hook in next st. in foundation Ch.,
pull up a loop, yarn over, insert hook in
same stitch again, pull up a loop, yarn
over, and through all loops. 1 S. C. in
each of the next 4 sts., repeat from *
across row, ending with 2 S. C., Ch. 1, turn.

Row 3—1 S. C. in each st. (20 S. C.),
Ch. 1, turn.

Row 4—Work same as Row 2, working
the Loop st. in Loop st. of Row 2.

Repeat Rows 3 and 4 for 13 inches even,
then decrease 1 st. each side every inch
5 times, then work even in D. C. for 9
inches, then work in pattern again, increas-
ing each side to correspond with decreases.

Work even for 8 inches.

THE WALES No. 3333 KNITTED NECKTIE

2 No. 14 Steel Needles

Scale:—9 sts. to 1 inch

MINERVA VELVEEN

Montella Brown No. 1134—1 Ball

Gold No. 1117—1 Ball

With Gold cast on 55 sts., K. 1 row, then
work in Moss Stitch, K. 1 st., P. 1 st.,
decreasing and increasing at beginning of
each row to make diagonal stripe as
follows:

Row 2—K. 2 together, * P. 1 st., K. 1 st.,
repeat from * across row.

Row 3—Increase 1 st. in first st., K. 1 st.,
P. 1 st., to end of row.

Continue in this manner for 1 inch Moss
Stitch, join Brown and K. 1 row, P. 1 row
(Stockinette Stitch) for 4 rows, Gold 2

rows, Brown 10 rows (Moss Stitch), then
Stockinette St. 2 rows Gold, 4 rows Brown.

Repeat striping throughout. Work 12
inches even, then decrease 1 st. each side
every half inch 10 times.

Work even (continuing diagonal stripe)
for 6 inches, then increase to correspond
with decreases.

Work 8 inches even.

Sew edges of tie together and press with
seam in center of tie.

Antique Pattern Library

