

The Antique Pattern Library

For more information, please see our website at: <http://www.antiquepatternlibrary.org>



This is a scan of an antique book that is, to the best of our knowledge, in the public domain. The scan itself has been photo-edited for readability, and is licensed under the **Creative Commons** Attribution-NonCommercial-ShareAlike License. To view a copy of this license, visit <http://creativecommons.org/licenses/by-nc-sa/2.5/> or send a letter to Creative Commons, 559 Nathan Abbott Way, Stanford, California 94305, USA.

You may share copies or printouts of this scan freely. You may not sell copies or printouts.

Donated by

Debra Carr

11/2010



FILET CROCHET

Home Needlework
Series



Price
Ten Cents

Published by
Home Needlework Publishing Co.
Boston, Mass.

The Home Needlework Filet Crochet Book

Edited by
Mira L. Huston

Home Needlework Series

"Absolutely To Be Relied Upon"

Home Needlework Edgings and Insertions
Home Needlework Centerpieces and Doilies
Home Needlework Filet Crochet Book
Home Needlework Tatting Book

Price of Each Book, 10 Cents

Price 10 Cents

Published By
Home Needlework Publishing Co.
Boston, Mass.

Copyright, 1916, by Home Needlework Publishing Co.
in the United States and Great Britain
(trade-mark reg. U. S. Pat. Office)
All rights reserved.



FIG. 1. HAND BAG. (See Figs. 2 and 3, and page 3)

Filet Crochet

Filet Crochet is an arrangement of solid and open meshes to produce a given design; the solid meshes are usually called blocks (blk), and the open meshes called spaces (sp).

A very few principles are necessary to a perfect understanding of Filet Crochet; but practice to insure perfectly uniform work, and to insure "square" work (a certain number of meshes to an inch and the same number of rows to an inch) can not be too strongly insisted upon, can not be emphasized too much. The pattern, when brought out in the crocheting, should be "square" like the block pattern. A good example of this is the Baby Bonnet, page 4; notice that the side of the bonnet presents the same proportion as does the block pattern above. A good piece of filet crochet is neither drawn out in the width by too loose chain and too short trebles, or drawn out of the square vertically by too long trebles.

STITCHES.—Stitch (st). Stitches (sts). Chain (ch). Treble (t). Having loop on hook, thread over, thread through ch or work, (thread over and through two) twice. Double (d). Having loop on hook, thread through work, thread over and through two. Double Treble (dt). St on hook, thread over twice, thread through work, crochet off by twos. Long Treble (lt). Like dt, thread over 3 or more times. Picot (p). A picot is formed by joining 4 ch sts (or any given number) in a ring with a sl or d.

MATERIALS.—Spool thread, cotton or linen. Any hard-twisted thread (such as Cordichet, Cordonnet, Cordonnet Special, Kord-net, etc.) is implied when "Crochet Cotton" is mentioned.

Crochet-hooks are numbered from 1 to 14, and may be used with different sizes of crochet cotton as follows. — No. 8 hook with 5 or 10 crochet cotton, 4 meshes to an inch; No. 9 hook with 15 or 20 cotton, 5 or 5½ meshes; No. 10 hook with 30 or 40 cotton, 6 or 7 meshes; No. 12 hook with 50 or 60 cotton, 8 meshes; No. 13 hook with 70 cotton, 9 meshes; No. 14 hook with 100 or 150 cotton, 10 to 11 meshes to an inch.

For foundation ch make 3 times the number of meshes plus 1 ch, plus 5 ch, turn, t in 9th st from hook, * ch 2, miss 2 sts, t in next; repeat from * for a row of sp. One blk is 4 t, 2 blk 7 t, 3 blk 10 t, etc. One sp is ch 2, miss 2 sts, t over next st.

To widen one sp at the first of a row,—ch 8, turn, t in 1st t. To widen more than one sp, ch 3 times the number of sp plus 5 ch, turn, t in 9th st. To widen at the last of the row,—ch 2, long t (3 times over) into base of last t, * ch 2, long t into base of long t; repeat from * required number of times. To increase 1 blk at beginning, ch 6, turn, t in 4th st from hook, 2 t in 2 sts. To increase 1 blk at end,—1 long t in base of t, (long t in base of long t) twice.

Directions

Figure 1. HAND BAG.—(Frontis-piece). No. 150 Crochet Cotton and

No. 14 crochet-hook. The work should be close.

When both sides of the bag are completed, hold the two together and connect by double crochet, 3 sts over each mesh. **BEADING.**—Double around the top of bag, 3 d in each mesh, then ch 36, catch back over 2d t, 25 d over ch, * ch 16, catch back over 2d t; repeat from * around bag. Around top of beading make 6 d in each sp. There should be 48 bars around the top.

TOP OF BAG.—Make 2 rounds of 96 sp around the top of beading. For 13 rounds follow pattern, repeating to make both sides of the bag. **ROW OF SCALLOPS.**—* 3 d in each of first 2 sp, ch 8, catch back above 1st t, 8 d over ch; repeat from * around. Finish with crocheted cords (each 18 inches long), and balls as illustrated.

Figure 5. BABY BONNET.—No. 150 Crochet Cotton and No. 14 crochet-hook.

Two pieces of the side pattern, Fig. 4, and one of the back, Fig. 12, are required. To join the edge of BC of the back to the line BC of the side, an insertion of open meshes

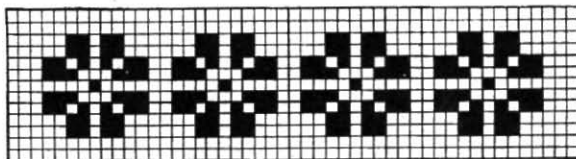
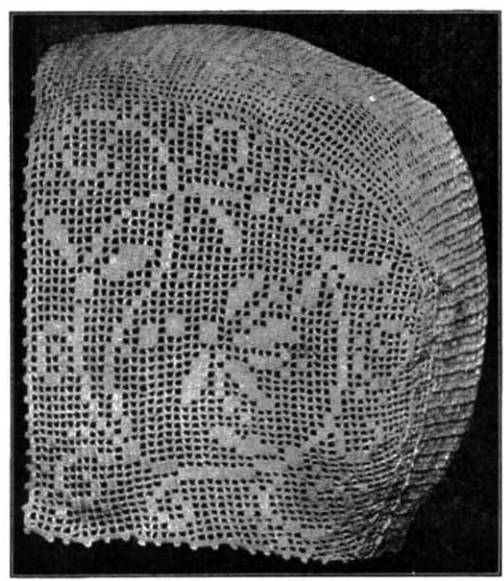
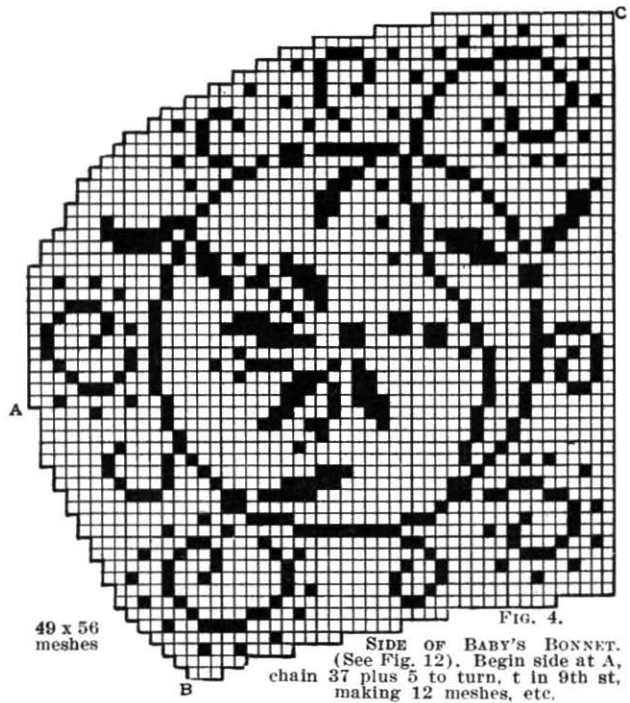


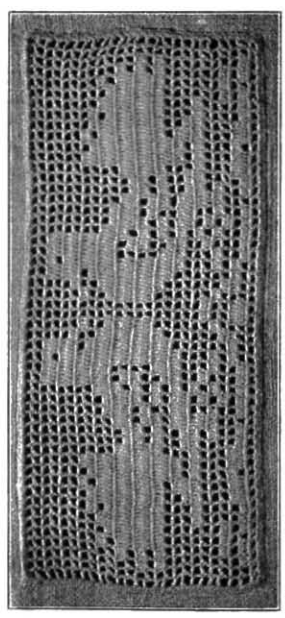
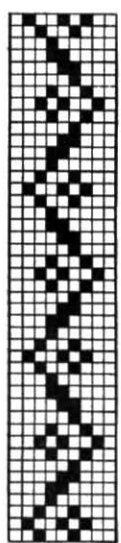
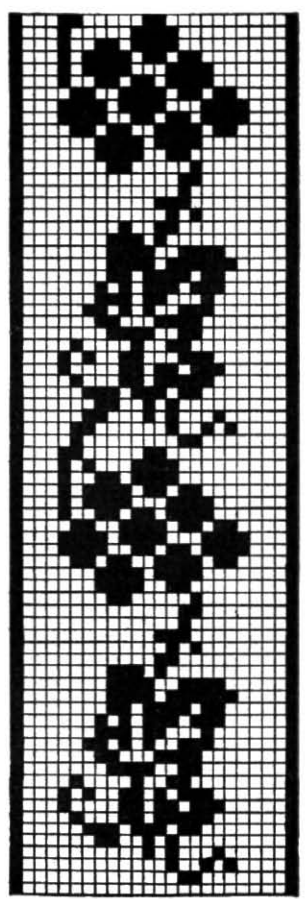
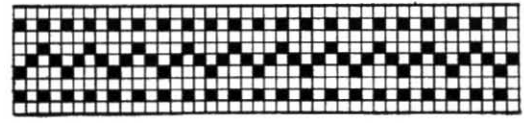
FIG. 2. TOP OF BAG, FIG. 1. 13 x 48 meshes



FIG. 3. PATTERN OF BAG, FIG. 1. 48 x 59 meshes



is made, 3 meshes wide and 100 rows long. The first and last 16 rows are made in the usual way; between these, every fourth row is finished with a double instead of a treble. This makes an insertion, curved to fit the two pieces, between which it is overcast. The edge is finished with doubles and picot.



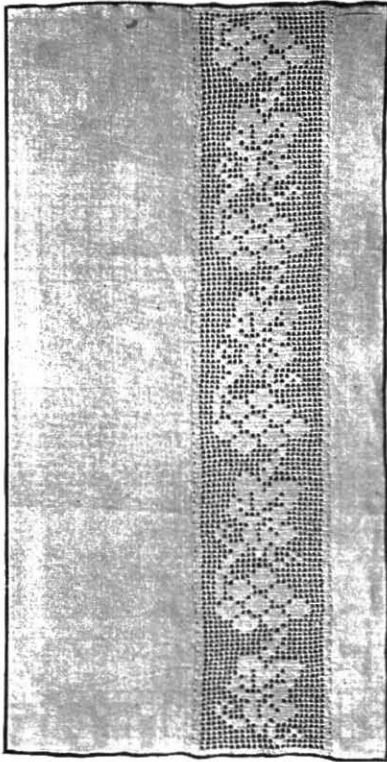


FIG. 8. TOWEL. (See Fig. 6)
No. 30 crochet cotton, No. 12 hook

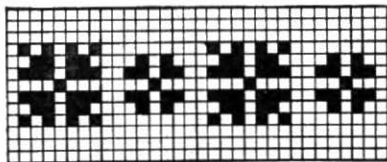


FIG. 9. PATTERN OF FIG. 10. 13 meshes

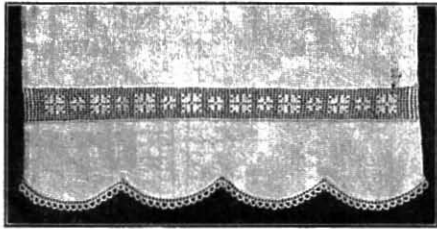


FIG. 10. TOWEL
No. 50 crochet cotton, No. 12 hook

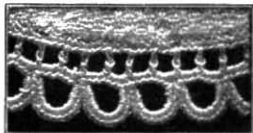


FIG. 11. EDGE OF TOWEL
FIG. 10

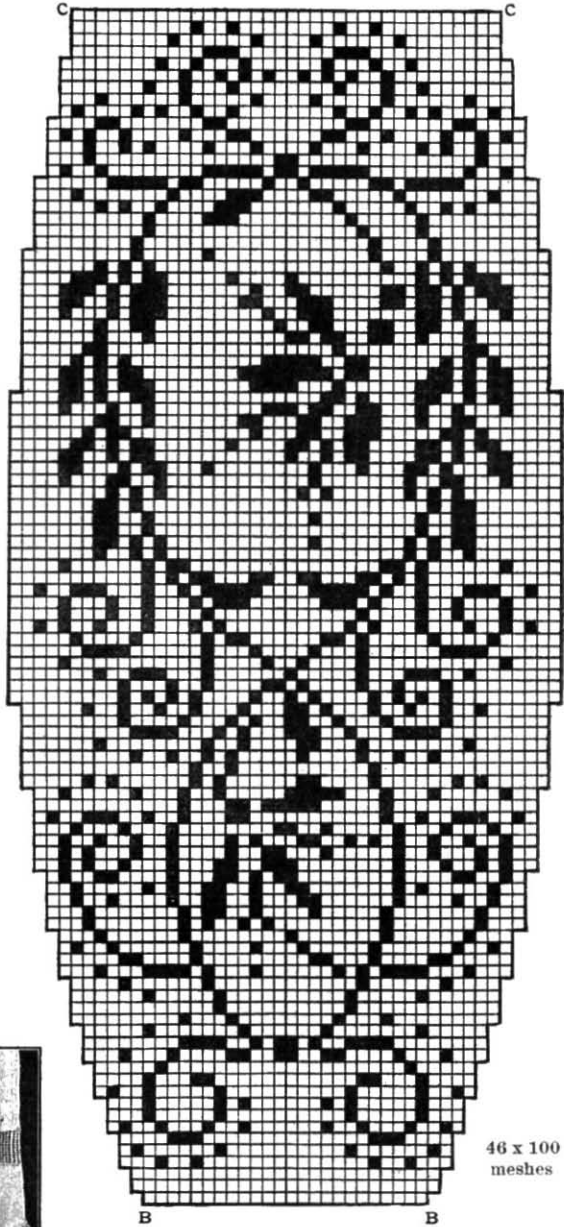


FIG. 12. BACK OF BABY'S BONNET
Begin back at B with ch 73 plus 5 to turn,
t in 9th ch, making 24 meshes, etc.

Figures 9, 10, and 11. TOWEL. EDGE OF TOWEL. (See Fig. 11.)—Make chain and sew around scallops. *1st row*—d into each ch st, (or d directly into scallop). *2d row*—Ch 5, t in 2d st. * ch 2, t in 2d st; repeat from *. *3d row*—* Fill 2 meshes with d, ch 8, catch back in 1st st, fill chain with d; repeat from *. Other pretty towel insertions are Fig. 2, page 3; Figs. 5½ and 6½, page 4; Figs. 18 and 19, page 6; Figs. 21 and 22, page 7; Figs. 26 and 27, page 8; Figs. 30 and 31, page 9; the edge of Lunch Cloth, Fig. 39, page 12; Figs. 47 and 52, page 14; Figs. 54 and 55, page 15; Fig. 59 (with initial), page 16.

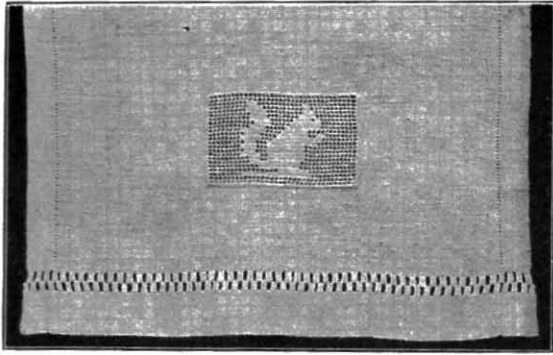


FIG. 13. INSERT FOR BIB
No. 70 crochet cotton, No. 12 hook

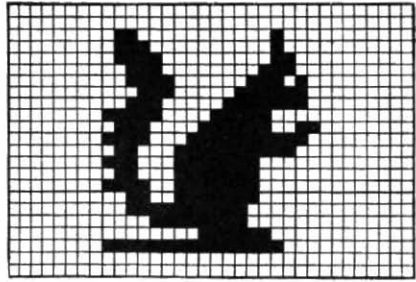


FIG. 16. PATTERN OF FIG. 13
23 x 34 meshes

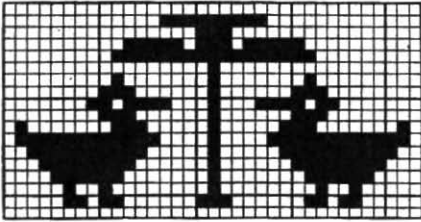


FIG. 14. PATTERN OF FIG. 17. 18 x 35 meshes

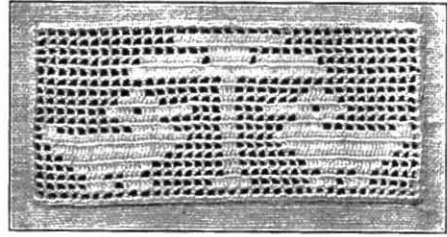


FIG. 17. INSERT FOR BIB
No. 70 crochet cotton, No. 12 hook



FIG. 15. CHRISTMAS TREE. 67 meshes

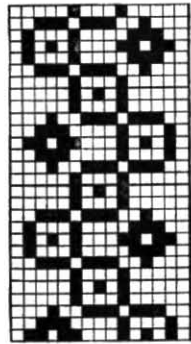


FIG. 18.
15 meshes

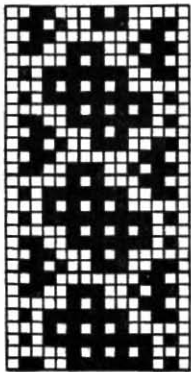


FIG. 19.
15 meshes

Figure 20. BIRD TRAY (see pattern, page 17).—Two balls No. 60 Crochet Cotton, No. 11 crochet-hook. 60x85 meshes. Chain 186, turn, t in 9th st from hook, 2 rows of 60 sp, etc. After making row marked A (which is the middle row), reverse the order of rows back to the first. **EDGE.**— * 3 d over each of 4 sp, ch 5, fasten with d in 5th d back, ch 1, (5 d, picot of 4 joined with d, 5 d) over 5 ch; repeat from *.

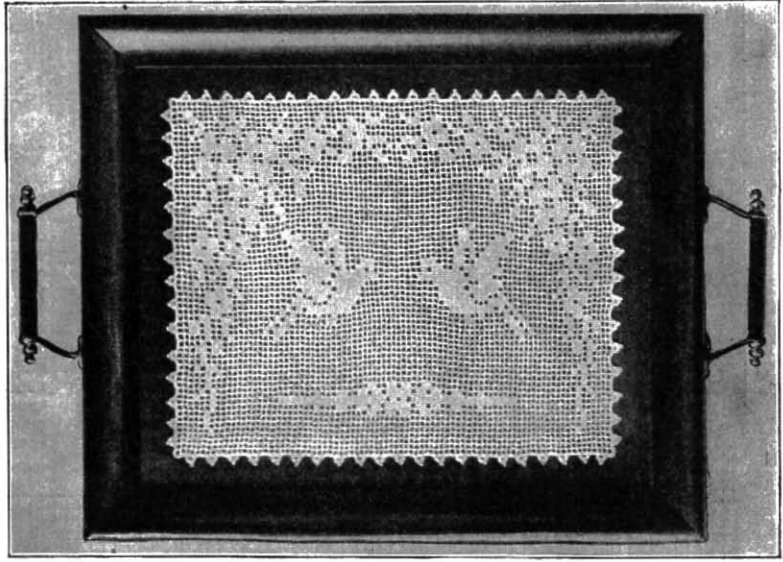


FIG. 20. BIRD DESIGN FOR SERVING TRAY. (See Pattern, page 17)

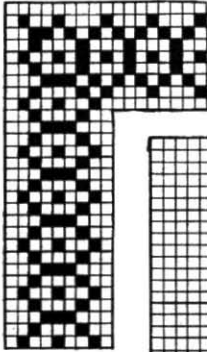


FIG. 21
9 meshes wide



FIG. 22
7 meshes wide

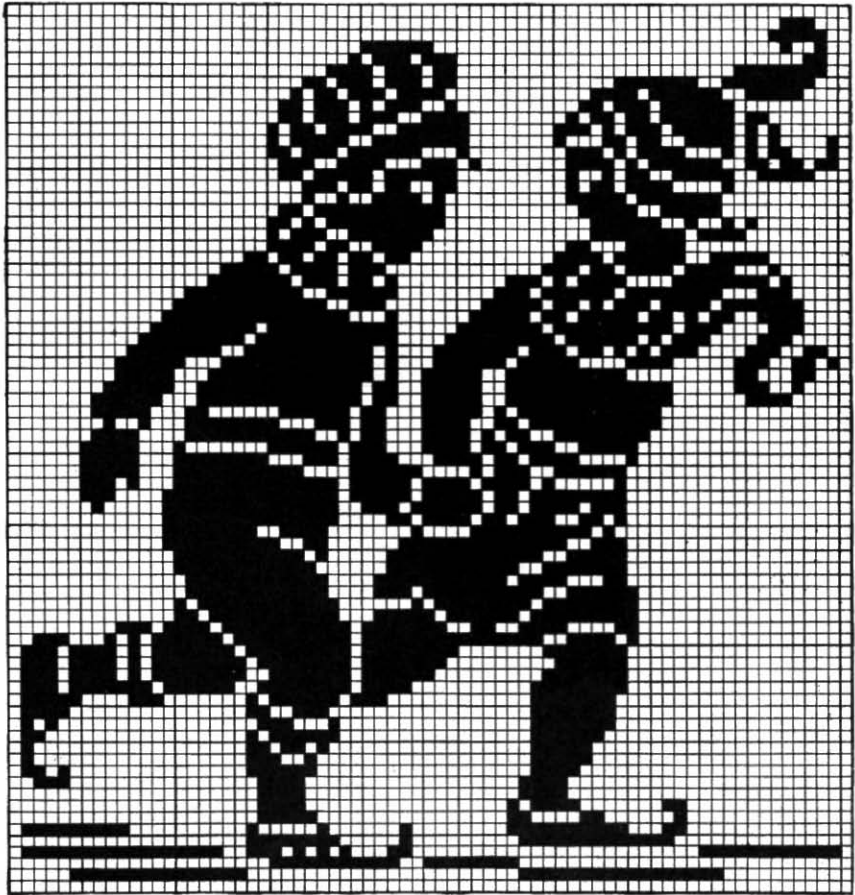


FIG. 23. SKATERS. 71 x 75 meshes

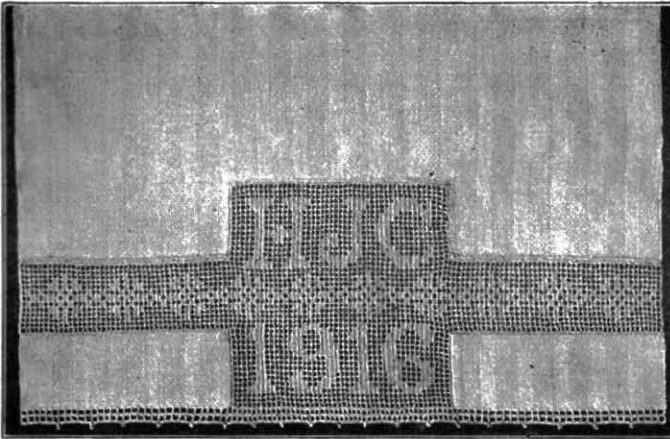


FIG. 24. TOWEL WITH DATE AND INITIAL. (See Figs. 25, 29 and 32)

Figure 24. TOWEL. — Huck toweling, No. 70 linen thread, No. 13 hook, 16 x 27 inches completed.

Pin crochet in place on linen. Mark with pencil on the linen the line for joining. Remove crochet and cut the linen, allowing $\frac{1}{4}$ inch for turning over; turn edge on pencil line and whip. Trim raw edge; sew together the crochet and linen. The two oblong strips of linen in the corners are double and whipped in.

Work one row of spaces across entire bottom edge and cover with d, 3 to each mesh; a second row of spaces covered with d, making a picot every fifth space.

(CONCLUDED ON PAGE 13)

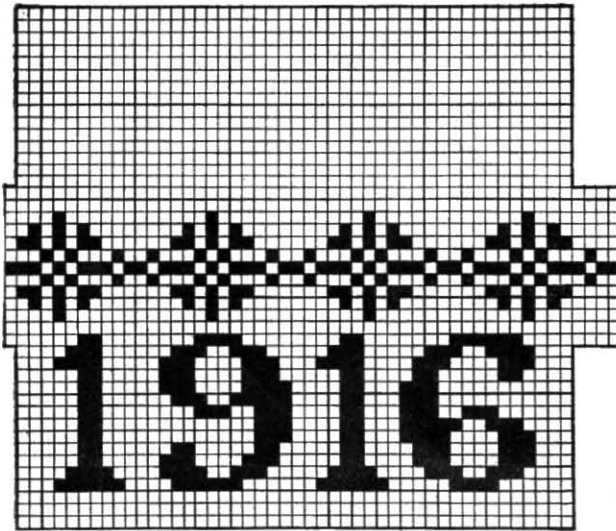


FIG. 25. PATTERN OF TOWEL, FIG. 24. 46 x 43 meshes
Band, 13 meshes

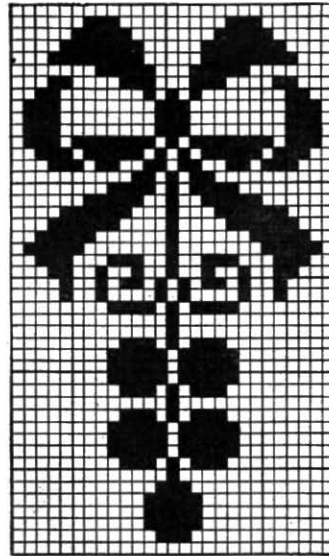


FIG. 27. 27 x 46 meshes

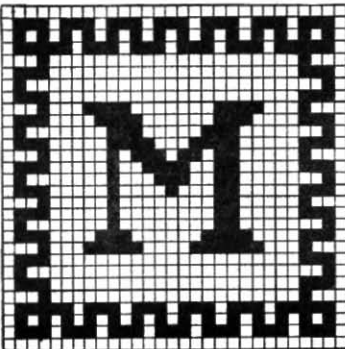


FIG. 26. 29 meshes
SHOWING USE OF ALPHABET, FIG. 29.

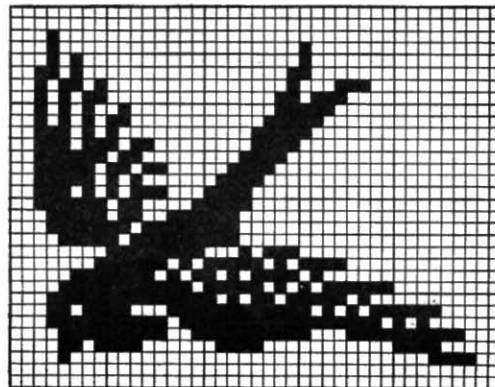


FIG. 28. 32 x 41 meshes

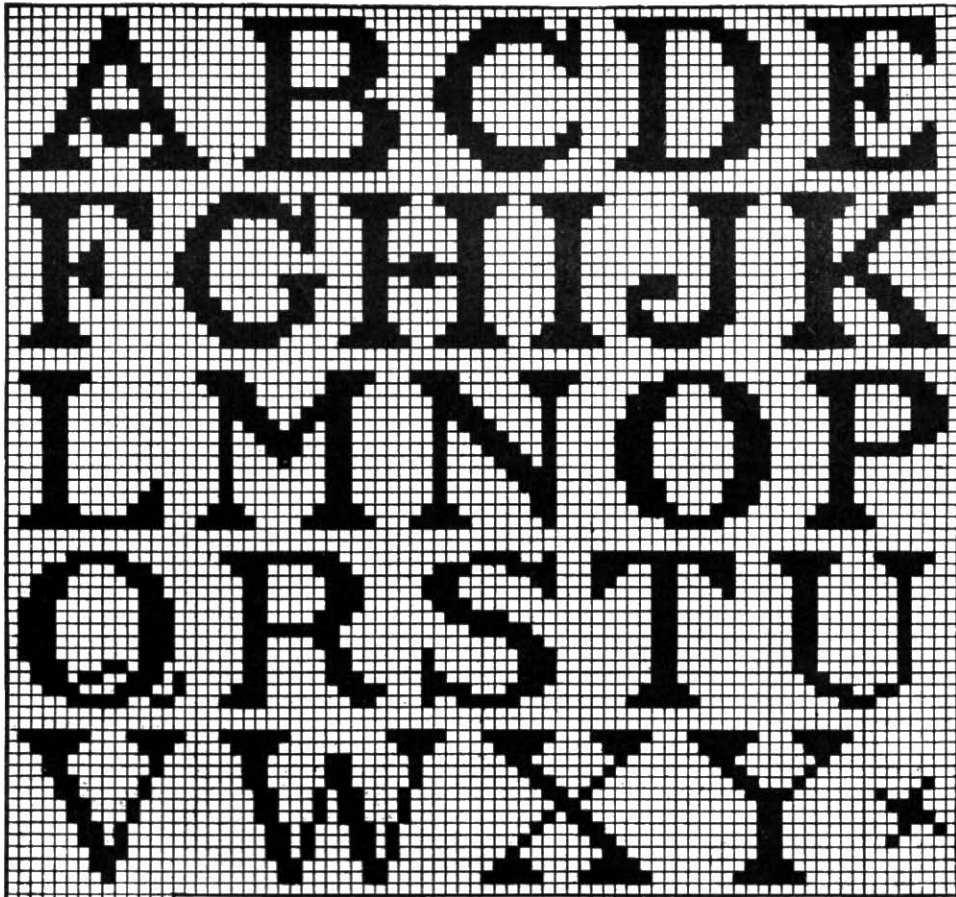


FIG. 29. 13 meshes high

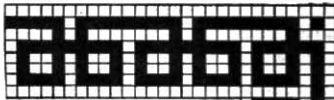
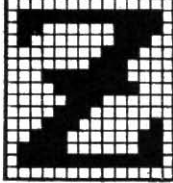


FIG. 30. 8 meshes wide

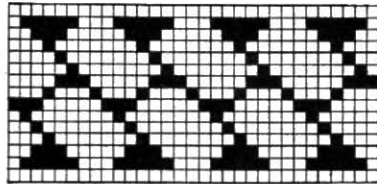


FIG. 31. 15 meshes

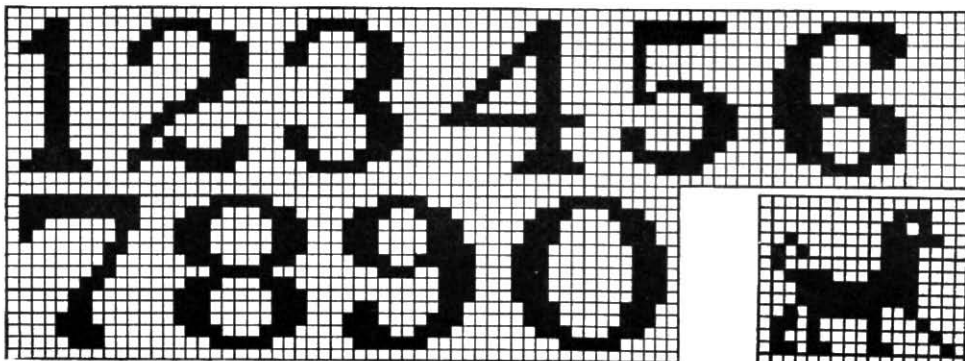


FIG. 32. 13 meshes high

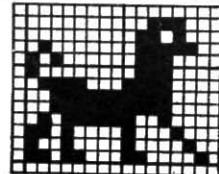


FIG. 33. 14 x 17 meshes

Figure 35. CENTREPIECE.
 —Six balls No. 40 Crochet Cotton, No. 10 hook, damask 20 inches in diameter. Finish the linen with a tiny hem by hand. Crochet d over the hem.

SPIDER-WEB PATTERN. 1st row—Ch 5, sp all around, join with sl. The number of sp should be a multiple of 7.

2d row—Blk (ch 3, 2 t in sp, t in t), 6 sp, * blk, 6 sp; repeat from *, join each row with sl.

3d row—Ch 3, turn, * blk, 4 sp, blk, sp, blk, 4 sp, blk, sp; repeat from *, sl across blk and sp, ch 3, turn.

4th row—* Blk, ch 5, dt in sp, ch 5, blk on next sp, sp, ch 2, t in same place, sp; repeat from *, join with sl, turn.

5th row—Ch 3, * blk, sp, blk, ch 6, 3 d (on ch before dt, on dt, after dt), ch 6; repeat from *, join with sl, sl across blk and sp, turn.

6th row—Ch 3, * blk in sp, ch 7, d in ch before d, 3 d over 3 d, d in ch, ch 7; repeat from *, turn.

7th row—(Ch 3, 3 t on 7-ch) as * blk, ch 5, miss 1 d, 3 d on 3 d, ch 5, 3 t on last 3 sts of 7-ch, t in first t of blk, sp; repeat from *, turn.

8th row—Ch 5, * t in sp, ch 2, t on 1st t, sp, 3 t on 1st 3 sts of ch, ch 3, dt in middle of 3 d, ch 3, 3 t on last 3 sts of ch, t on 1st t of blk, sp, ch 2; repeat from *, ending with blk, ch 2, join with sl, sl over sp and blk, turn.

9th row—ch 3, 3 t under 3-ch, ch 2, 3 t under next 3-ch, t in 1st t of blk, 6 sp, * blk, sp, blk, 6 sp; repeat from *, turn.

10th row—Ch 5, 7 sp, * blk, 8 sp; repeat from *, turn.

11th row—Ch 5, sp all around. The lace outside this is finished and overcast to the outer edge.

FILET SQUARES.—Chain 61, turn. **1st row**—2 t in 5th st from hook, 3 t in 3 t, (ch 2, miss 1, t in next st) 22 times, (ch 2, miss 2, t in next st) 3 times.

2d row—Ch 5 (always on this side of lace), 25 sp, 7 t, making the last 2 t under the turn of ch, to widen, ch 2, t in same place.

3d row—Ch 3, 9 t (2 over

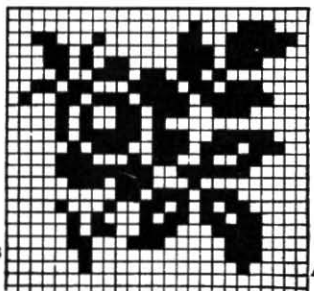
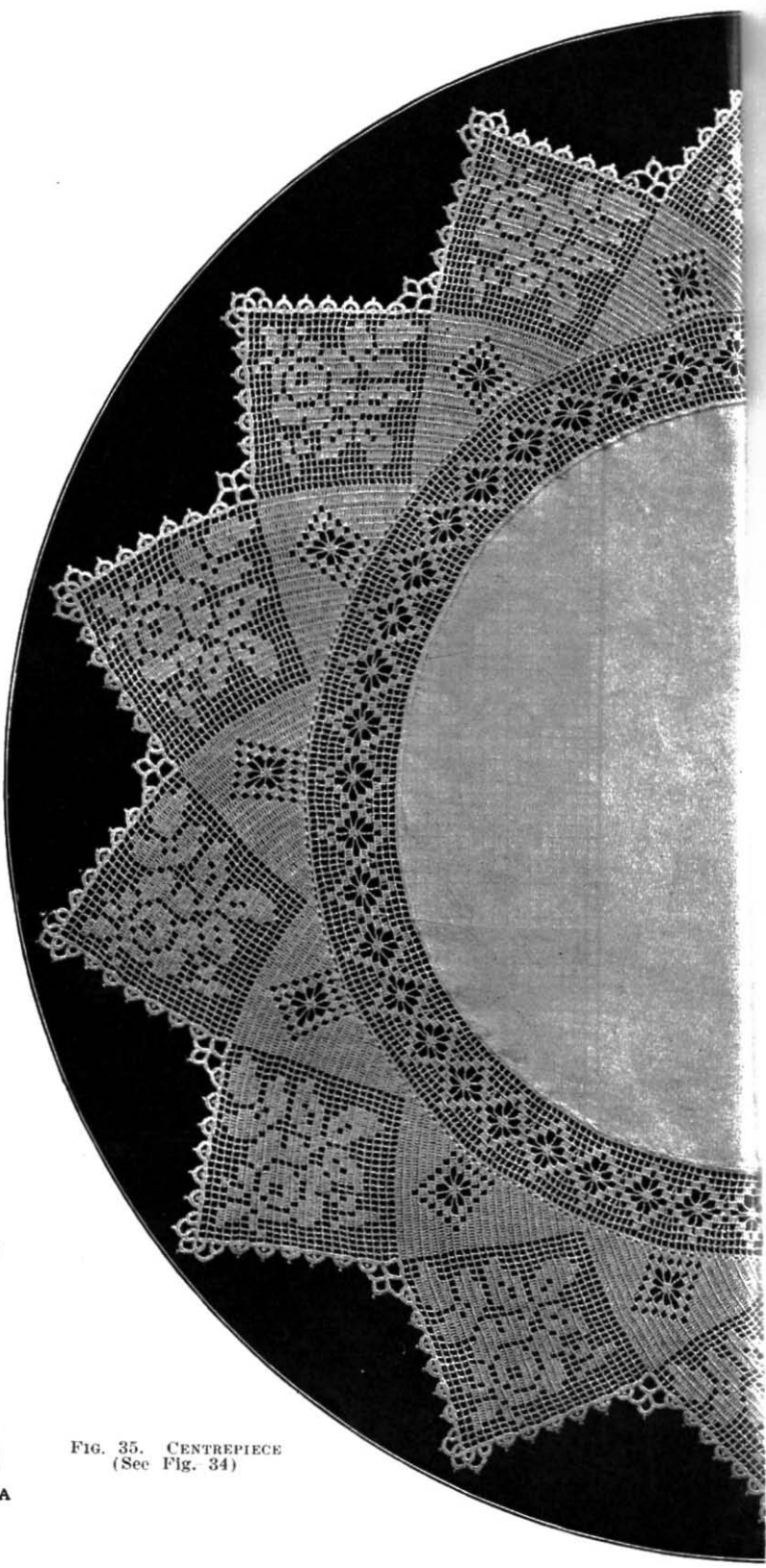
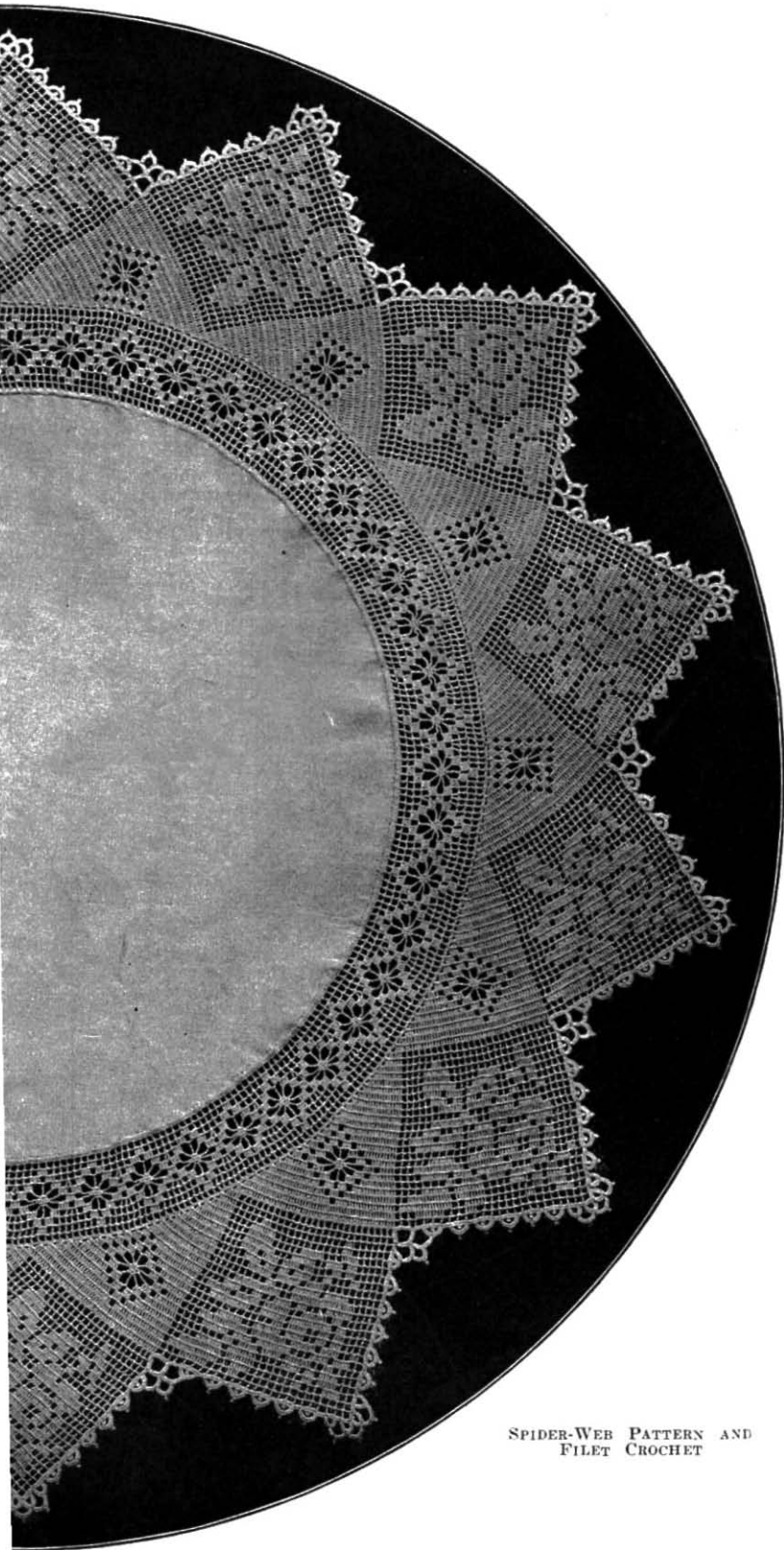


FIG. 34. PATTERN OF FIG. 35
 24 x 25 meshes

FIG. 35. CENTREPIECE
 (Sec Fig. 34)



SPIDER-WEB PATTERN AND
FILET CROCHET

ch, 7 over 7 t), 3d row of filet, beginning at A of block pattern, Fig. 34.

4th row—Fourth row of filet, beginning at B, 11 t, ch 2, t.

5th row—Ch 3, 13 t, fifth row of filet.

6th row—Filet, 15 t, ch 2, t.

7th row—Ch 3, 17 t, filet.

8th row—Filet, 19 t, ch 2, t.

9th row—Ch 3, 21 t, filet.

10th row—Filet, 23 t, ch 2, t.

11th row—Ch 3, 25 t, filet.

12th row—Filet, 21 t, sp, blk, ch 2, t.

13th row—Ch 4, blk (3 t on ch, t on t), sp, blk, sp, 18 t, filet.

14th row—Filet, 15 t, (sp, blk) 3 times, ch 2, t.

15th row—Ch 4, blk, sp, blk, ch 3, dt in sp, ch 3, blk in next sp, sp, 12 t, filet.

16th row—Filet, 9 t, sp, blk, ch 5, 3 d (over ch, dt and ch), ch 5, blk over next sp, sp, blk, ch 2, t.

17th row—Ch 4, blk, sp, blk, ch 7, d on ch, 3 d on 3 d, d on next ch, ch 7, blk, sp, 6 t, filet.

18th row—Filet, 9 t, sp, blk, ch 5, miss 1 d, 3 d, ch 5, blk, sp, 9 t, ch 2, t.

19th row—Ch 4, 14 t (2 over ch, 9 over t, 3 over sp), sp, blk, ch 3, dt in middle of 3 d, ch 3, blk, sp, 12 t, filet.

20th row—Filet, 15 t, sp, (blk, sp) twice, 19 t, ch 2, t.

21st row—Ch 4, 24 t, sp, blk, sp, 18 t, filet.

22d row—Filet, 21 t, sp, 28 t, ch 2, t.

23d row—Ch 4, 54 t, filet.

24th row—Filet, 56 t, ch 2, t.

To begin the second square—Ch 3, 2 t under turn, 3 t on 3 t, (ch 2, miss 1, t on next st) 22 times, (ch 2, miss 2, t on next st) 3 times, making 25 sp. Repeat from beginning of 2d row.

PICOT EDGE.—Begin, on the side of the square having 24 sp, on 3d sp from corner, 3 d in sp, 1 d in t, ch 7, take hook out and draw st through 1st d, cover 7-ch with 14 d, 4 d in next sp, 4 d in corner sp, ch 7, catch back over 1 sp, 7 d over ch, ch 7, catch in top of 1st loop, (7 d, picot of 4, 7 d) in same loop, 7 d in loop, 4 d in same corner sp, ch 7, catch at end of last loop, 7 d over ch, ch 7, catch back in next loop, 7 d, p, 7 d over same ch, 7 d in lower loop, 4 d over each of next 2 sp, ch 7, catch back over 1 sp, 7 d in ch, ch 7, catch in last loop, (7 d, p, 7 d) in same ch, 7 d in lower loop, (* fill 2 sp with d, p, fill 1 sp, ch 7, catch back over 2 sp, 7 d, p, 7 d over same ch *) 5 times, make from * to * once without last p, fill remaining sp of this square and 2 sp of next square with d, ch 7, catch back across 4 sp at corner, 7 d in ch, ch 7, catch back in last scallop, fill with 14 d, 7 d in lower loop, fill 2 sp, p, fill 1 sp, ch 7,

(CONCLUDED ON PAGE 14)

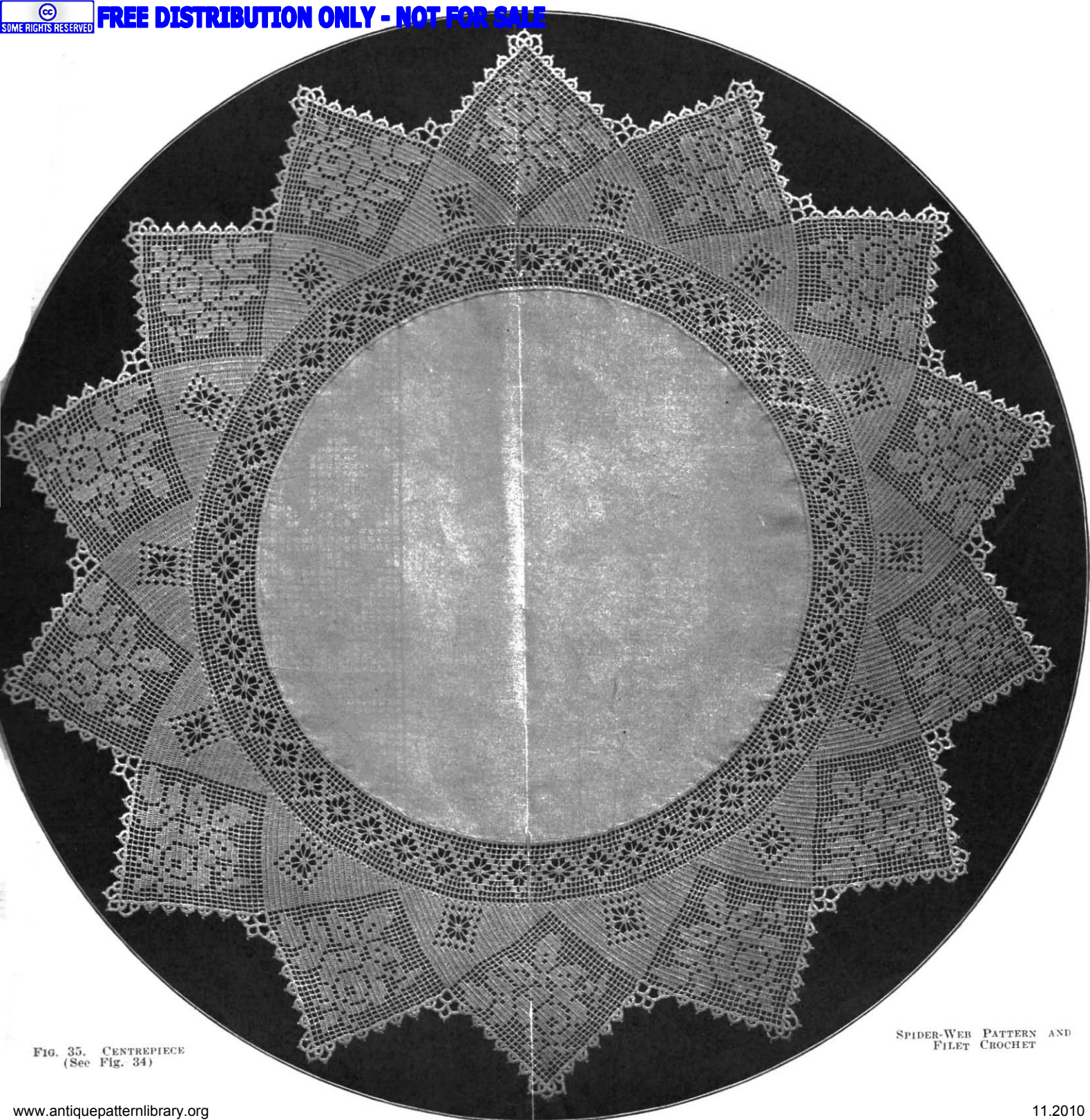


FIG. 35. CENTREPIECE
(See Fig. 34)

SPIDER-WEB PATTERN AND
FILET CROCHET

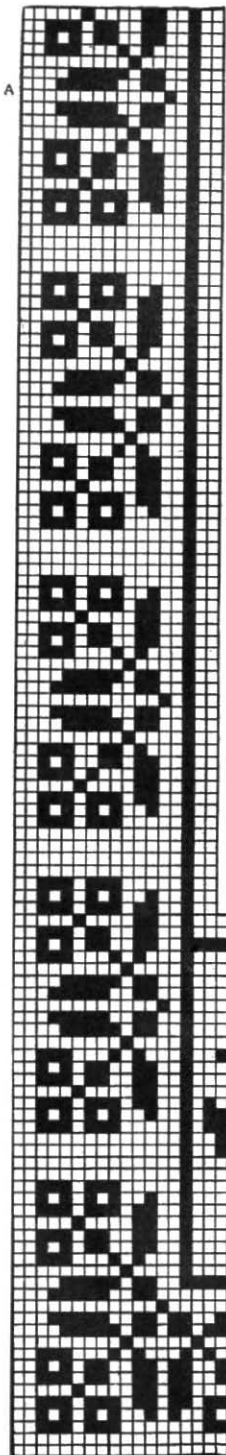


Figure 38. LUNCH CLOTH. — Thirty - nine inches square, hem $2\frac{1}{4}$ inches, margin $2\frac{1}{2}$ inches. Hollow square of filet, 29 inches at outer edge. Linen centre, 25 inches. Use No. 40 Spool Cotton and No. 14 hook.

Finished crochet and linen should be thoroughly shrunk; cut and fit the

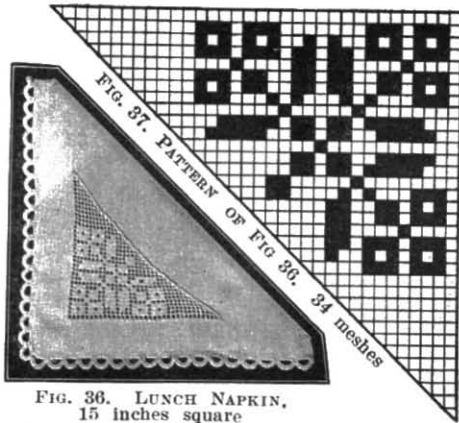
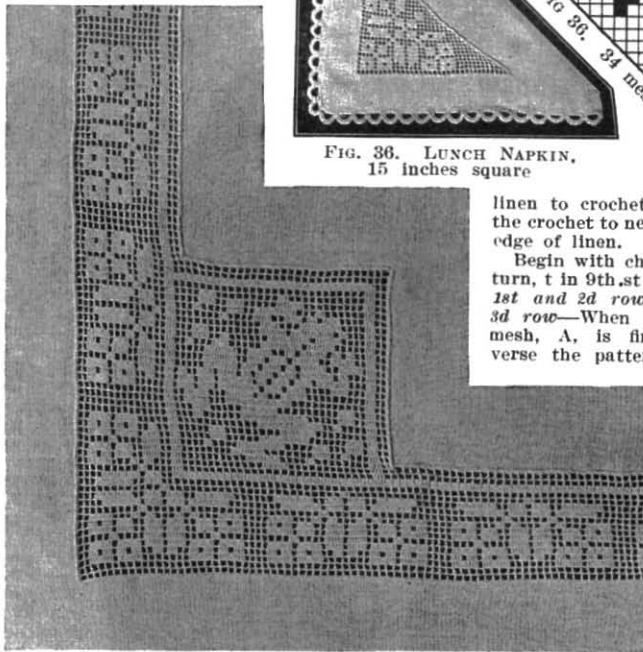


FIG. 36. LUNCH NAPKIN, 15 inches square



linen to crochet and whip the crochet to neatly turned edge of linen.

Begin with chain of 681, turn, t in 9th.st from hook. 1st and 2d rows—225 sp. 3d row—When the middle mesh, A, is finished, reverse the pattern for the

FIG. 38. LUNCH CLOTH

last half of the row. Follow pattern until 17 rows are made. The 18th row will be but 45 meshes long, turn and work back and forth until the medallion is finished, then work on in the same way up the side (17 meshes in a row) until it is long enough to make the medallion again; add ch for 28 meshes (84 ch), and make 28 rows of medallion.

Start at second side, finish medallion, and work side (17 meshes wide), add ch for 28 meshes and make 28 rows of medallion. Connect both sides with ch for 135 meshes less 1 st, (404 ch), and reverse the order of the 1st 17 rows.

FIG. 39. PATTERN OF LUNCH CLOTH, FIG. 38. 225 meshes square, 17 meshes wide

Figure 43. NUT BASKET.—No. 50 Crochet Cotton and No. 12 hook. Begin by making a square of 10 meshes, crochet on one side, break thread and begin on next side of square, break thread, etc. Finish with double crochet over entire edge. Crochet

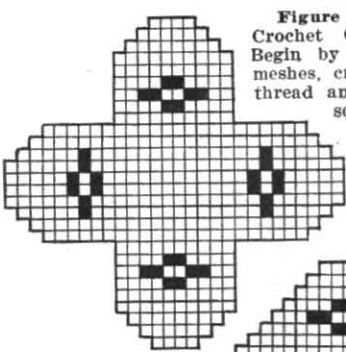


FIG. 40. PATTERN OF NUT BASKET, FIG. 43

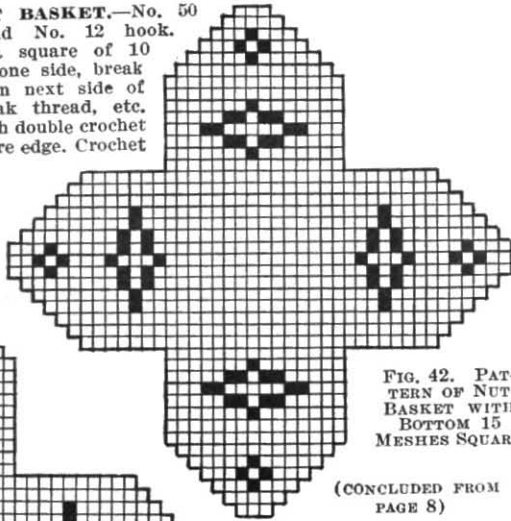


FIG. 42. PATTERN OF NUT BASKET WITH BOTTOM 15 MESHES SQUARE

(CONCLUDED FROM PAGE 8)

Any initials and date may be copied from alphabet and figures on page 9, arranging the letters in upper part of Fig. 25.

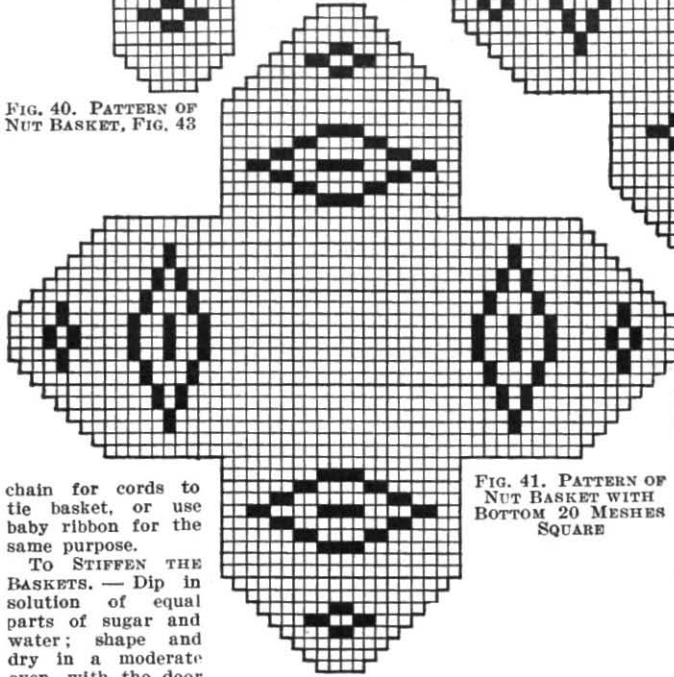


FIG. 41. PATTERN OF NUT BASKET WITH BOTTOM 20 MESHES SQUARE

chain for cords to tie basket, or use baby ribbon for the same purpose.

To STIFFEN THE BASKETS. — Dip in solution of equal parts of sugar and water; shape and dry in a moderate oven, with the door ajar, being careful not to scorch the piece.

Figure 48. MATCH HOLDER.— No. 40 Crochet Cotton and No. 12 hook.

Chain 4, join. *1st row*—Ch 1, 7 d in ring. *2d, 3d, and 4th rows*—Ch 1, * d in 1st st, 2 d in next st; repeat from *. *5th row*—Ch 1, * 2 d in 2 d, 2 d in next st; repeat from *. *6th row*—3 d in 3 d, 2 d in every 4th st. *7th row*—4 d in 4 d, 2 d in every 5th st. *8th row*—5 d in 5 d, 2 d in every 6th st. *9th row*—6 d in 6 d, 2 d in every 7th st. *10th row*—7 d in 7 d, 2 d in every 8th st. In 10th row there should be 84 sts; if necessary, widen two or three places to make 84. *11th row*—First row of filet, 84 t, join each row with sl and begin the next row with ch 3 for a blk or ch 5 for sp.

Follow pattern, Fig. 47, to end of 21st row. *22d row*—* 7 t in 4th t, sl on 1st t of next blk; repeat from *. To stiffen, see Nut Basket, page 13; shape over small glass.

Figure 49. JELLY - GLASS HOLDER.— No. 40 Crochet Cotton and No. 12 hook. Chain 6, join. *1st row*—Ch 5, t in ring, (ch 2, t) 6 times, ch 2, join with sl, making 8 sp. *2d row*—Ch 3, 3 t in sp, 4 d in each sp, join. *3d row*—Ch 3, 3 t in 3 t, * ch 3, 4 t in next 4 t; repeat. *4th row*—Ch 3, 3 t in 3 t, * ch 3, t under 3-ch, ch 3, 4 t in 4 t; repeat. *5th row*—Ch 3, 3 t in 3 t, * ch 4, t in t, ch 4, 4 t in 4 t; repeat. *6th row*—Like 5th row, ch 5 instead of ch 4.

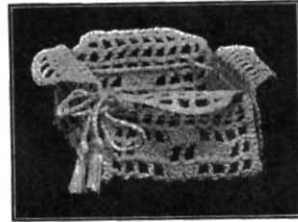


FIG. 43. NUT BASKET (See Figs. 40 and 44)

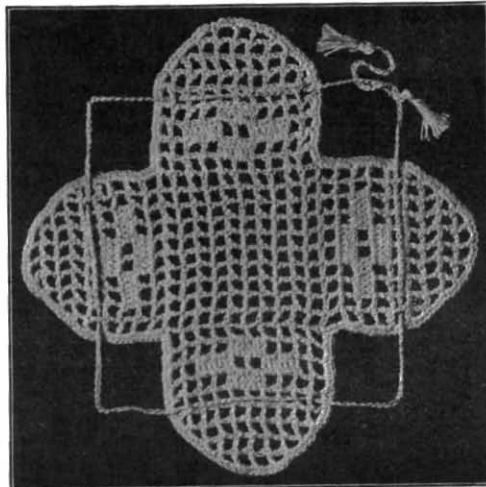


FIG. 44. NUT BASKET (flat). (See Figs. 40 and 43)

7th row—Ch 3, 3 t in 3 t, * (7 t over 5-ch) twice, 4 t in 4 t; repeat from *, making 144 t. This completes the bottom.

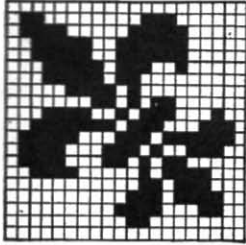


FIG. 45. 20 meshes



FIG. 48. MATCH-HOLDER (See Fig. 47)



FIG. 49. HOLDER FOR JELLY GLASS. (See Fig. 52)

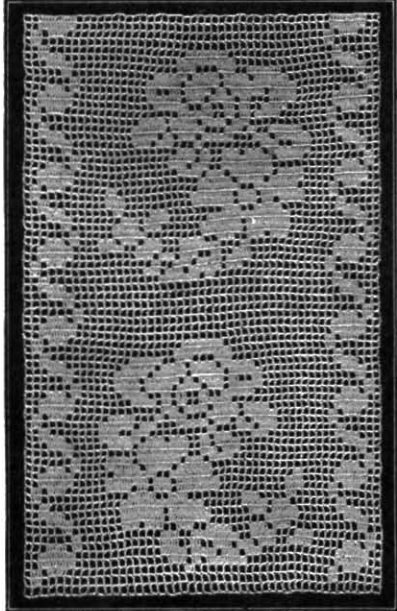


FIG. 46. COUNTERPANE STRIP
Use No. 50 Crochet Cotton, No. 12 hook.
6 inches wide, 48 meshes wide, 4 1/2 inches each repeat.

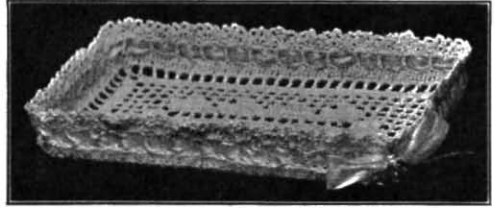


FIG. 50. PIN TRAY. (See Fig. 51)

Figure 36. LUNCH NAPKIN (see page 12).
— Fifteen inches square.

BORDER.—Chain required length, turn, d into each st of ch. Roll the edge of linen and overcast the foundation ch to the linen at the same time.
2d row—* 8 d in 8 d, ch 10, catch back in 7th d from ch, cover ch with 20 d; repeat from *.
3d row—Miss 1 d, sl in 2d d, * 16 d in 16 d, sl in next d, sl in 2d d of next scallop; repeat from *.

Figure 50. HAIRPIN TRAY (see page 14).
— No. 40 Crochet Cotton and No. 12 hook. Chain 43. 1st row—T in 4th st from hook, t in each st, making 40 t, (13 blk). After the first row

Jelly Glass Holder

(CONCLUDED FROM PAGE 13)

First row of filet. — 144 t. Follow pattern, Fig. 52. After last row of filet, * make 8 d over 8 t, picot of 6 joined in top of 8th d; repeat from *. To stiffen, see Nut Basket, page 13.

Centrepiece

(CONCLUDED FROM PAGE 11)

catch back over 2 sp, 7 d over this loop, ch 7, catch back in middle of loop across corner, 7 d over ch, ch 7, catch back in middle of last loop, fill with 7 d, p, 7 d, 7 d over ch, 7 d over scallop, make from * to * 5 times and make corner as before.

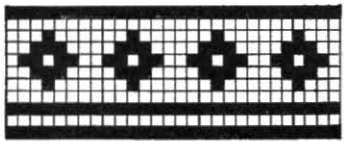


FIG. 47. PATTERN OF MATCH-HOLDER

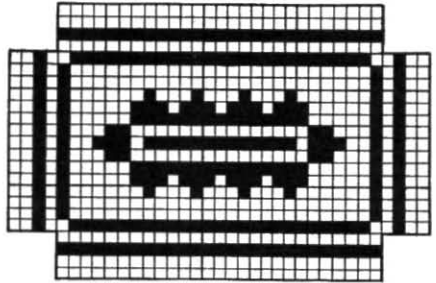


FIG. 51. PATTERN OF PIN TRAY

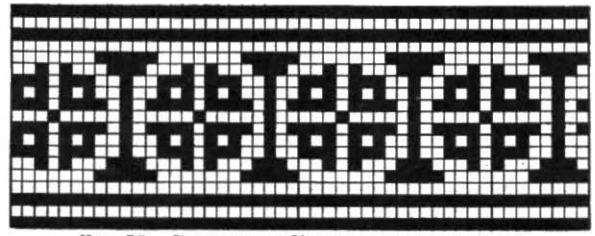


FIG. 52. PATTERN OF HOLDER FOR JELLY GLASS

is finished for a centre, the flet pattern, Fig. 51, is to be followed *around* the 1st row; ch 5 for corners and ch 3 to begin a row with a blk, or ch 5 to begin with sp. *2d row*—Ch 5, t in 1st st of 43-ch, ch 5, t in same st, 13 sp, ch 5, t in 40th st, ch 2, t in 43d st, ch 5, t in same st, 13 sp, ch 5, sl in 3d st of first 5-ch. *3d row*—Ch 3, 3 blk, ch 5 for corner, t in same st with last t, 15 blk, etc.

After 8th row is finished, do not make corners, but connect the four sides (that lie flat in the pattern) in rows that extend all around. *11th row*—Ch 6, dt in 3d st, * ch 2, dt in 3d st; repeat from * for beading. *12th row*—* 5 t in 1st sp with 1-ch between, d in 2d sp; repeat from *. *13th row*—* Ch 4, d in 1-ch; repeat from *, making 3 loops of 4-ch in top of each scallop. To stiffen, see Nut Basket, page 13. Run ribbon through the beading.

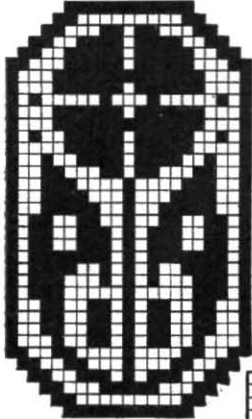


FIG. 53. 21 x 35 meshes



FIG. 56. PATTERN FOR BIB. See Fig. 7, page 4. 24 x 52 meshes

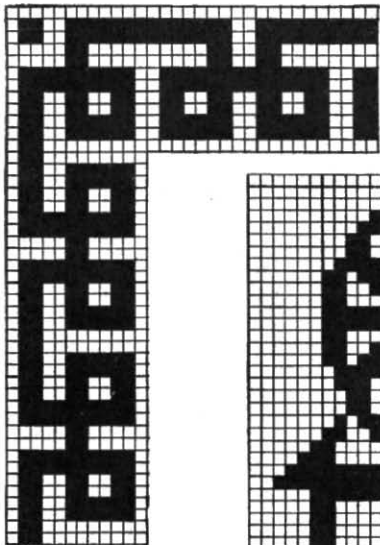


FIG. 54. 12 meshes

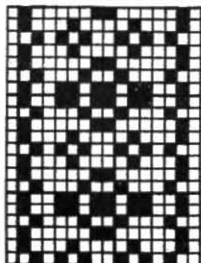


FIG. 55. 16 meshes



FIG. 57. 60 x 77 meshes



FIG. 58. 12 meshes high

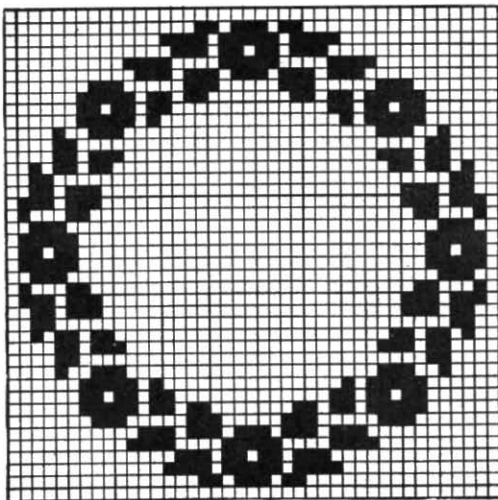


FIG. 59. WREATH FOR INITIAL. 41 meshes

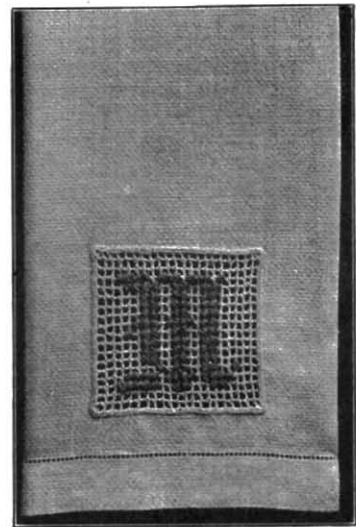


FIG. 60. CROSS-STITCHED FILET CROCHET FOR TOWEL LETTER FROM FIG. 58

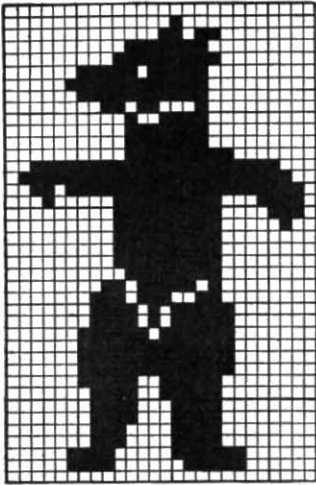


FIG. 61. 26 x 40 meshes

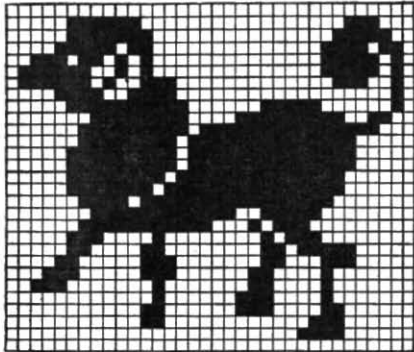


FIG. 62. 29 x 34 meshes

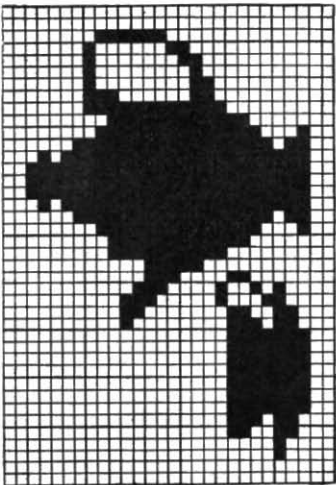
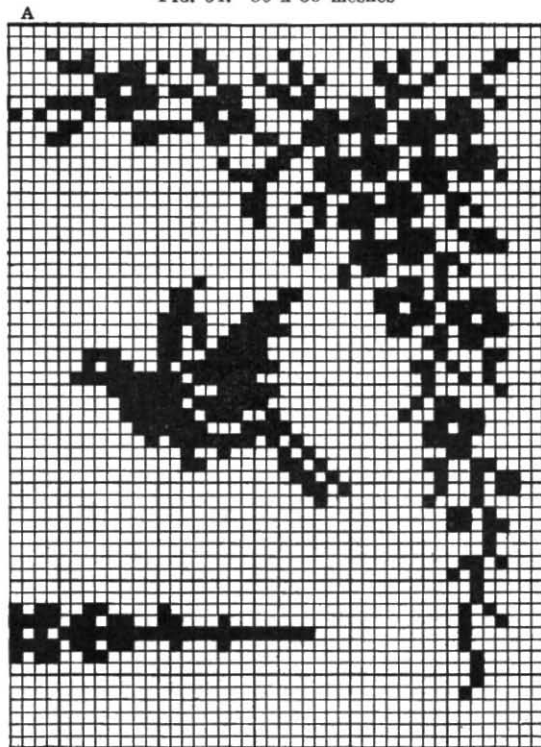


FIG. 63. 28 x 40 meshes



FIG. 64. 50 x 59 meshes



A
FIG. 65. PATTERN OF FIG. 20, page 7
60 x 85 meshes



FIG. 66. 85 x 124 meshes



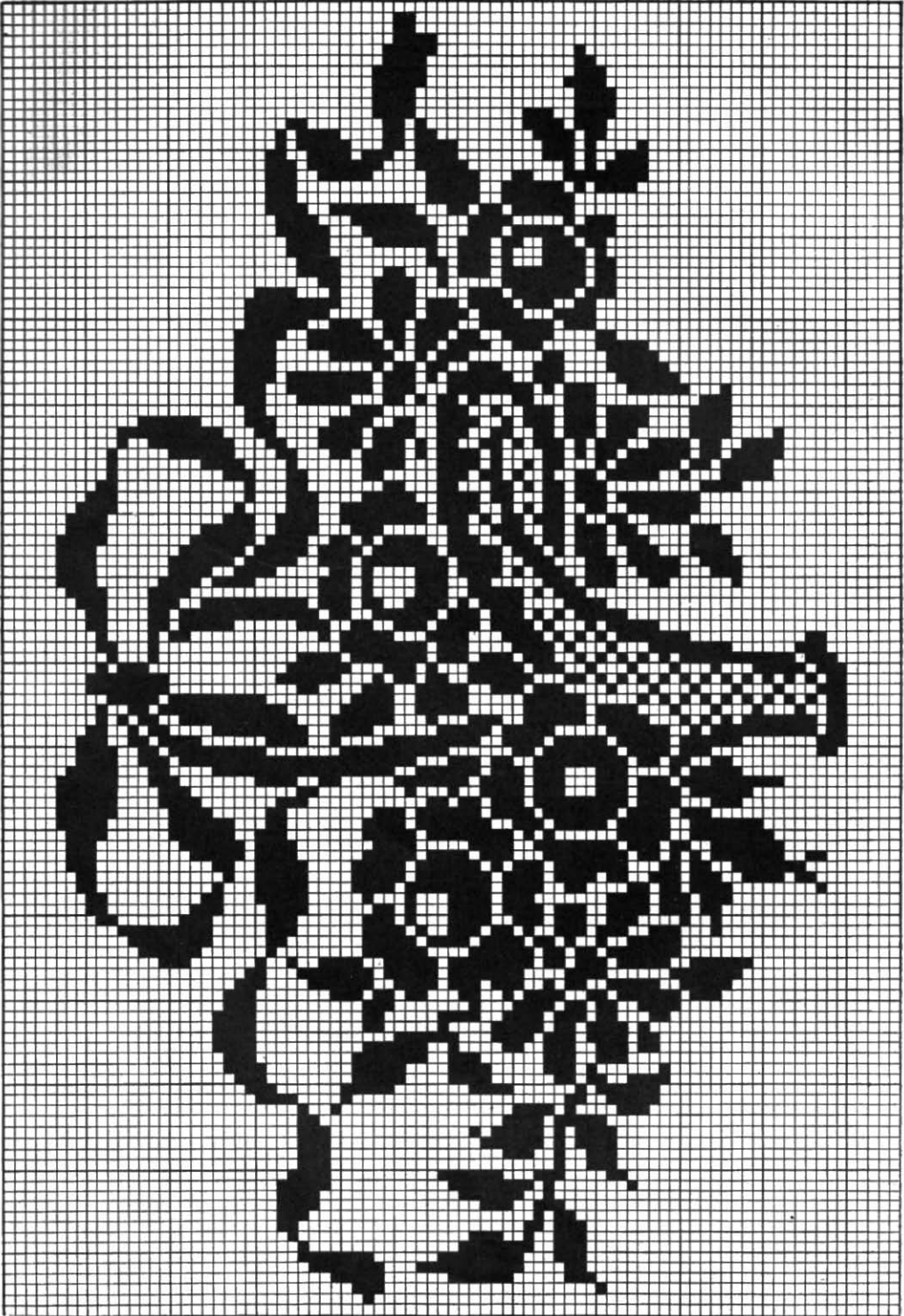


FIG. 74. 85 x 124 meshes



Home Needlework Fancy Work Instruction Books

Home Needlework Filet Crochet Book

Over sixty illustrations of new and popular Filet Crochet designs make this book one of the most attractive ever issued. The various designs can be adapted for the decoration of the many articles for which Filet Crochet is suitable. A large centrepiece in a combination of Filet and Spider-web crochet will find many admirers, and a beautiful bag that every worker will want to make at once is shown in the frontispiece. All the designs can be worked directly from the book.

Home Needlework Centrepieces and Doilies in Crochet

This new and handsome book shows a large number of attractive centrepieces and doilies that are well worth making. A charming Cluny design is included among the newer pieces, and both varieties of braid crochet, novelty medallion and coronation, are represented by beautiful examples. An unusual and beautiful centrepiece in a combination of Reticella, Palm Beach and Snowflake crochet will be found very attractive.

Home Needlework Edgings and Insertions in Crochet

Lovers of crochet can never have too many designs of edgings and insertions for the decoration of lingerie and the various household articles which can be so beautified by crochet. In this new book directions are given for a large number of unusually attractive trimmings suitable for dining-room, library, and bedroom linens, as well as for lingerie.

Home Needlework Tatting Book

This book contains nearly fifty illustrations of beautiful tatted articles with full directions for working. The pieces include centrepieces and doilies, bags, jabot, beaded brooches, baby caps, baby dress, edgings and insertions, the new roll tatting, etc. Directions are given for a striking novelty—a handsome centrepiece in grape design—that alone is worth many times the price of the book.

10 cents each

Your favorite Art Needlework Store can supply you with the Home Needlework Instruction Books, but if you have any difficulty in obtaining them write direct to us.

Home Needlework Magazine, Southgate Bldg., Boston, Mass.



THE ONLY MAGAZINE—

HOME NEEDLEWORK is the *only* magazine of its kind. It is devoted *exclusively* to Fancy Work, teaching its readers how to make all sorts of beautiful things in Embroidery, Crochet, Lace-making, Knitting, Stenciling, Drawn Work, Bead Work, Basketry, China Painting, and the like. All the work is illustrated and described so clearly that even *beginners* find it easy.

Frivolous women don't get much pleasure from Home Needlework, but women who enjoy making dainty little articles for themselves, their children, and their homes think it is worth a great many times its cost.

SPECIAL OFFER

If you have never subscribed for Home Needlework, why not begin *now!* The subscription price is 75 cents a year, or if you will send 25 cents extra (\$1.00 in all) we will enter your subscription for TWO years—24 issues. After you have received your first three copies, if you don't think it is just about the best needlework

magazine you ever saw, notify us and we will refund your money in full, and make you a present of the three copies received. Owing to the greatly increased cost of paper used in Home Needlework Magazine, this SPECIAL TWO-YEAR OFFER may have to be withdrawn at any time, so we suggest you take advantage of this money-saving offer before it is too late.

Address your order to

HOME NEEDLEWORK MAGAZINE, Southgate Bldg., Boston, Mass.