

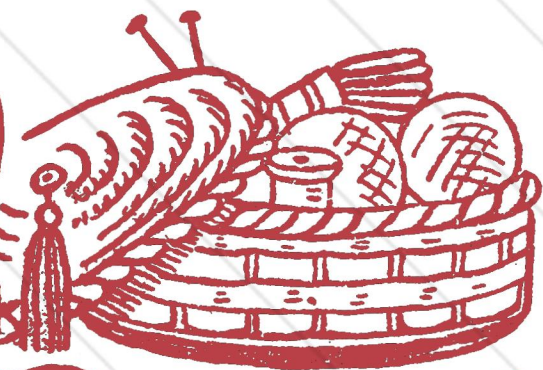
The Work Basket

HOME AND NEEDLECRAFT
For PLEASURE and PROFIT

VOLUME 8

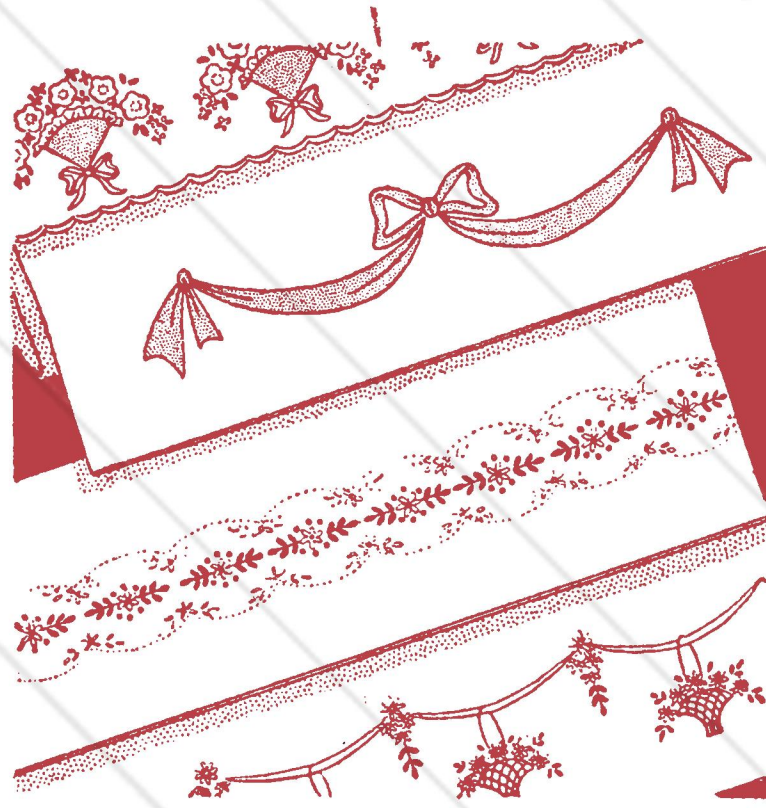
(1987)

NO. 3



IDEAS for the Bazaar, the Home,
Gifts and Sparetime Money-makers
— with Many Inexpensive, Easily
Made Articles that find a Ready Sale.

NEXT MONTH



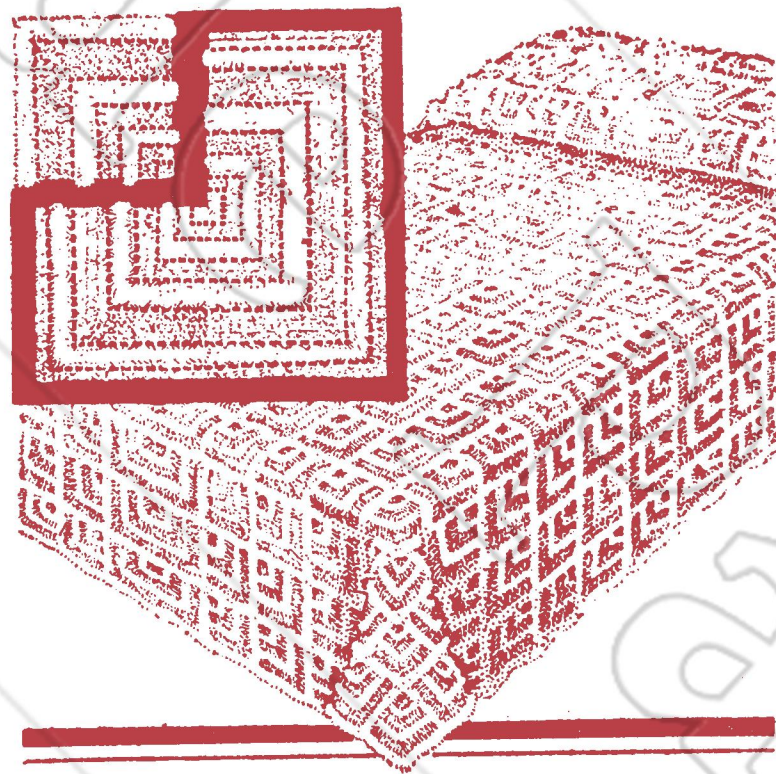
The transfer brings four pillow slip mo-



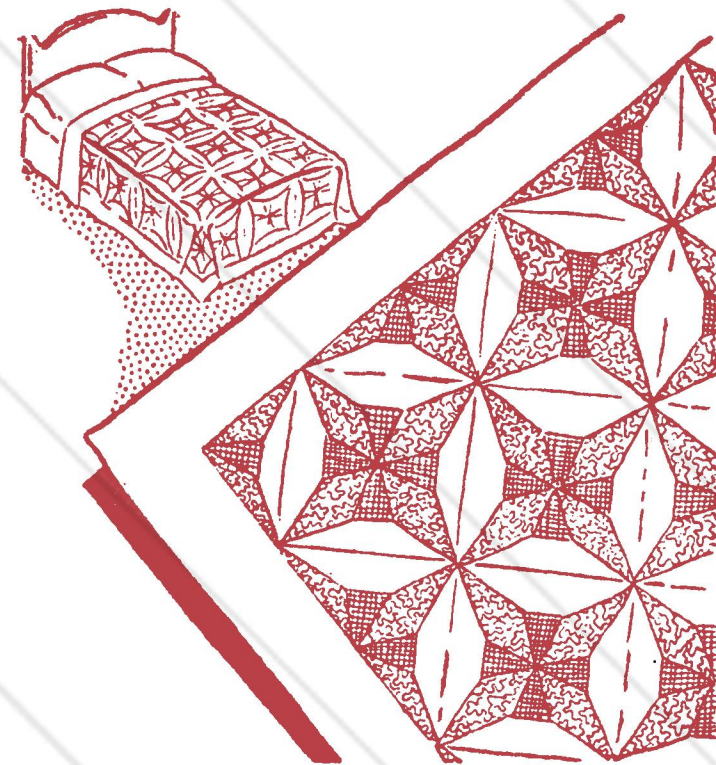
tifs and a group of designs for luncheon cloths, curtains, etc.



In crochet there is a cunning hood and



mitten set, and a simulated chenille spread.



The quilt is the pieced Diamond Solitaire.

STOCKING DOLLS

Use old rayon hose — these are not wanted by government. Lingerie may be used but requires more skill. For darky dolls choose dark shades or dye light hose; light shades make white dolls. Heavier hose, without runs, are best, however, if runs are sewed up they will not show unless on face.

Turn hose wrong side out, tie tightly around ankle with heavy thread — just above heel (A). Cut off foot about 1/4" from tie and turn hose. Stuff head firmly

until about 7" in diameter and 4" from top to bottom. Tie tightly around hose just below head (a).

Stuff body until firm—with seam down center back. Body should be about 8 1/2" around but will vary with size of hose. Sew across below body (B), draw in slightly and fasten.

Split leg portion up center—remove seam at back of hose (B). Turn edges in and whip seam (C). Stuff legs 3 1/2", gather with needle and thread at ankle. Leg should be about 1 1/4" in diameter. Stuff foot, pulling cotton forward to form toe, fold ends over (C), and whip from toe to heel. Foot should be about 1 1/2" long.

Arms—cut 3"x5", seam, gather 1 end and draw in to round off, turn, stuff. Fold other end in and sew to body (C). Sketch features with very soft pencil and embroider. Outline eye with black, fill in pupil with black solid st, iris white solid st, lashes and nose black, lips red with buttonhole st from center out (F).

Whip head and body together all around—about 1/4" from where neck was tied to hold head erect. Fasten foot to leg in same way. If lingerie is used cut strip about 8"x15" and seam to resemble hose, or make various parts separately by dimensions given.

For crochet items use number 5 mercerized crochet cotton (about string weight) and a number 4 steel hook.

Darky's hair—about 25 yds. black. To make cap-shaped foundation, ch 6, sl st in first st to form ring. Rnd 1: ch 4, dc on ring, *ch 2, dc on ring, repeat from * 4 times, ch 2, sl st in 3rd st of 4 ch to close each rnd. Rnd 2: ch 4, dc on 2 ch, *ch 2, dc on next ch, ch 2, dc on same ch, repeat from * on each of next 4 chs, (ch 2, 1 dc) on each remaining ch. Rnd 3: ch 4, dc on ch, *ch 2, dc on next ch, ch 2, dc on same ch, ch 2, dc on next, repeat from * all around.

Rnd 4: ch 4, dc on ch, *ch 2, dc on next ch, repeat from * all around Rnd 5: like 3. Rnd 6: like 5. Close rnd 6, sc over first ch, *ch 6, sc over same 2 ch, sc over next ch, repeat from * all around. At end, sc around first dc of rnd 6, *ch 6, sc around same dc, sc around next dc, repeat from * all around. Work spirally making a 6 ch loop on each dc of all rnds to center. Bows—6 yds. red—ch 35 for each.

White dolls' hair — yellow or brown thread: about 30 yds. for boy, 60 for girl. Yarn, or hose cut in very narrow strips may also be used. Boy's—cut ten 9" lengths, lay these across head just above forehead and sew firmly at center (D). Add 10 strand groups closely, one behind the other to back of head. Stitching at center resembles part, cut bangs. Girl's—same with 18" lengths parted at back and braided (E).

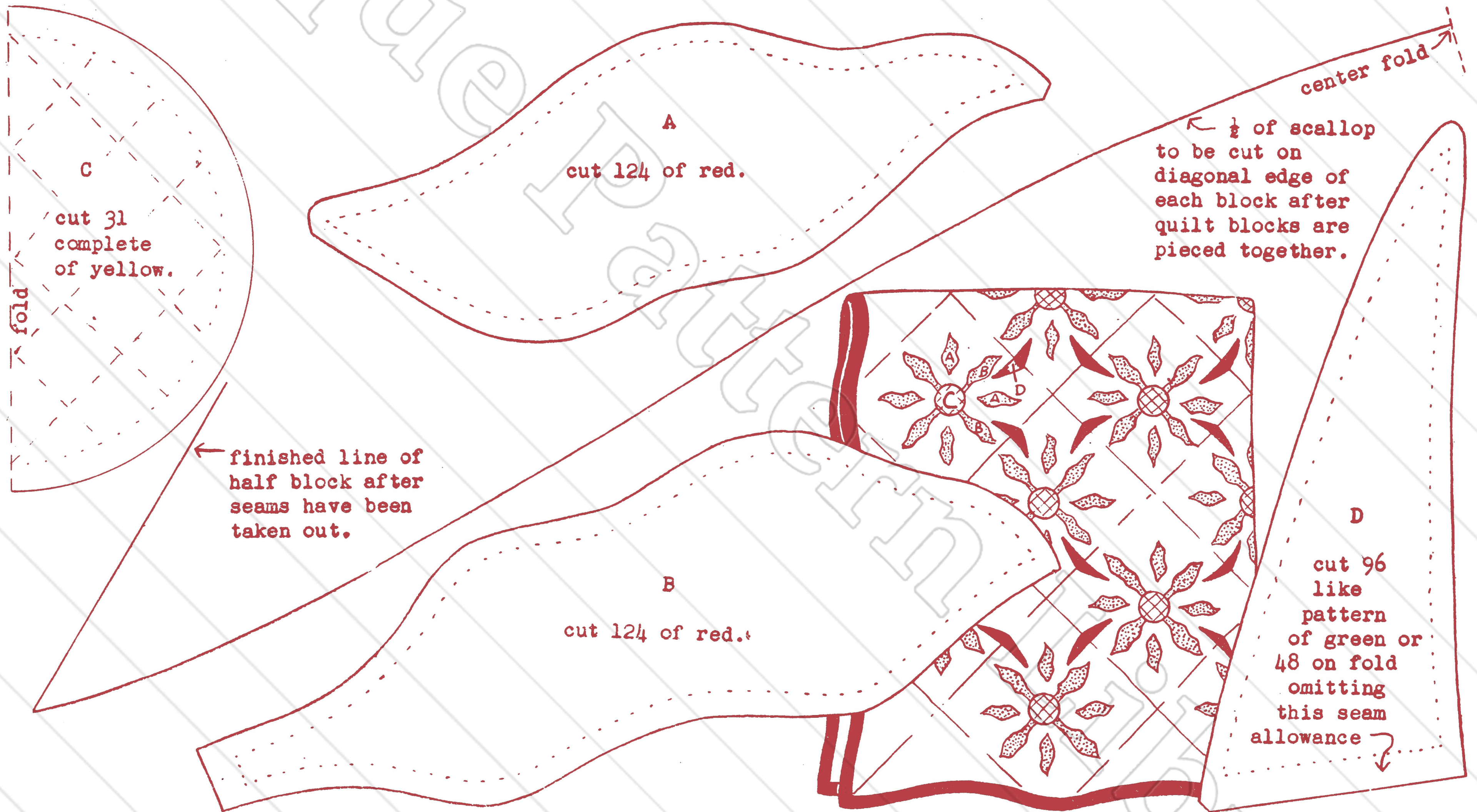
Blouse-shirt—about 80 yds. white, 5 yds. red. Ch 33. Row 1: sk 3 sts of ch, *3 dc in ch, 2 dc in next st (this is an increase (inc), repeat from * all around, ch 3, turn. Row 2: inc every 5th st. Rows 3-4: same as 2, sl st in 3rd st of 3 ch to close row 4—this forms yoke with opening at neck, cut, fasten. To complete upper part of front begin in 16th st at left of opening, ch 3, 15 dc to opening, 16 dc on other side, ch 3, turn, work 2 rows even.

Back—sk 10 sts on yoke for armhole, fasten in 11th, ch 3, dc at base of 3 ch, dc across back inc in every 5th st. Leave 10 sts free at other side, ch 3, turn, 2 rows dc even, ch 8, sl st in end dc of last row on front to close armhole, cut, fasten. Begin in other end of last row on front, ch 8, sl st in end of last row on back. Ch 3, dc across back, sts of 8 ch, across front and in sts of other 8 ch, close. Ch 3, work 4 rnds dc even, cut, fasten.

Sleeve—fasten in on front where 8 ch joins dc row. Ch 2, dc up in ends of rows, across shoulder and down other side, work hdc in last st before 8 ch, sc across in sts of 8 ch, close. Ch 1, sl st in next st, sc in next, hdc in next, dc around top of sleeve ending with hdc, sc and sl st at other side, do not work in 8 sts under arm, ch 1, turn, repeat last row, ch 3, turn, dc completely around even, close, ch 3, work 5 more rnds. Work a rnd of red sc from underside of sleeve—turn 2 rows back for cuff.

Collar—fasten in end, ch 3, 1 dc at base of ch, *2 dc in next st, 1 dc in next, repeat from * around, 2 dc in end. Work row of red sc around collar and opening. Make a red ch 8" long, run through sides of neck, tie.

Full skirt—about 80 yds. blue. Band—ch 65, sk 3 sts of ch, dc in each st of ch. Try on doll, it should fit snugly, adjust if necessary. Ch 3, turn, dc in each dc of last row. Ch 4, turn, work 3 tr in at base



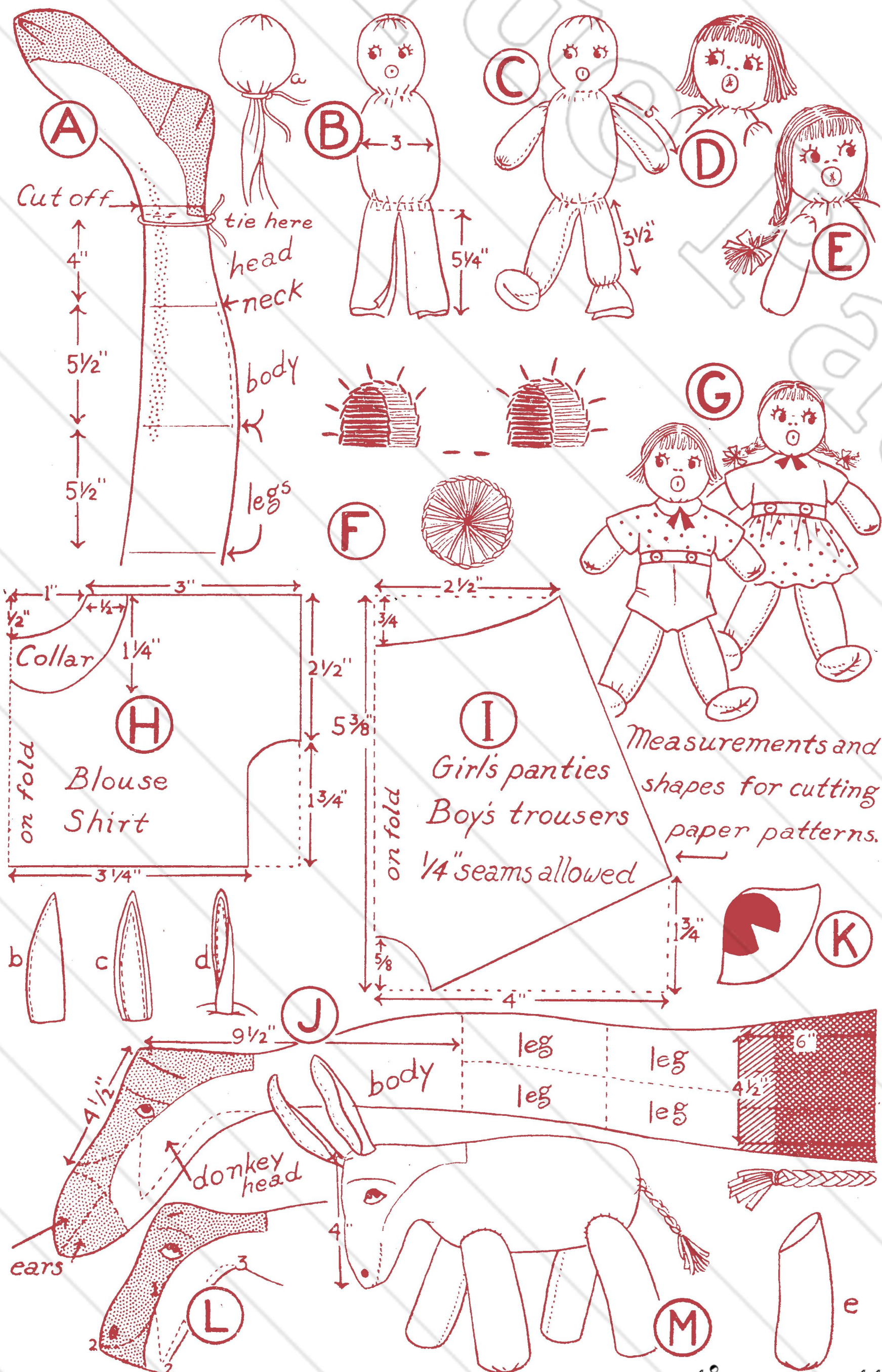
Poinsettia Quilt

Cut 31 blocks of white 15½" square. Mark exact center of each block and applique yellow centers in place. Lines on centers are red running or outline stitch. Cut 124 each of A and B petals (4 of each for each block). Applique in place

around center. Leaves may be cut in one piece and appliqued after quilt is set together or cut in two pieces (size as given on block above) and appliqued to each block. Allow ⅛" around each applique piece to turn under. Allow ¼" on half leaf at edge of block. There are 48 whole leaves or 96 half leaves. When all blocks

are finished, set together as shown, filling in edges with 18 half blocks. Cut diagonal side of each half block by scallop pattern given. Bind edge of quilt in red or green.

You will need: 3 yards red for A and B; 12 inches yellow for C; 22½ inches green for leaves; 11 yards binding for edge, 8 ⅔ yds. white.



of 4 ch, *work 4 tr in next st and repeat from * to end, ch 4, turn, work 1 tr in each tr of previous row. Sl st in 4th st of 4 ch to close—this forms placket. Ch 4, work 3 rnds of tr even.

Panties—white, or red with white trim. About 40 yds. red, 3 yds. white, or all white. Ch 58, sk 3 sts of ch. Row 1: dc in each st of ch, ch 3, turn. Rows 2, 3, 4, 5: dc even. At end of row 5, sl st to close placket. Rnd 6: ch 3, 13 dc, 3 dc in 1 st, 27 dc, 3 in 1, dc even to end, close. ch 3. Rnd 7: dc to center of first 3 dc group, 3 dc in center dc, dc to next 3 dc group, 3 dc in center st, dc to end. Rnds 8, 9: same as rnd 7.

On red panties work a rnd of white sc even, then red dc even to center st in first 3 dc group, dc in center st, sk over to next 3 dc group and dc in center st—this forms leg, dc to end, close, cut. Lace edge—fasten white in, *ch 3, sc in same st, sk 1 dc, sc in next, repeat from * all around. Other leg—fasten in with dc worked in center st, ch 3, dc around working last dc in with dc in center st on other side. Fasten with small button.

Overalls—about 90 yds. blue. Like panties through rnd 9, omit sc rnd, next rnd is the same, then continue dc rnds on each leg to desired length. Bib—begin in 4th st from opening, ch 3, 20 dc, * turn, 1 sl st, ch 3, dc in all but last dc, ch 3, turn, 1 row even, repeat from * twice. Straps—ch 6 1/2", sk 3 sts, dc to end, ch 3, turn, dc to end, ch 4, sl st in other side of end to form buttonhole. Make 2. Sew buttons on corners of bib, fasten loops over buttons, cross straps at back to fit doll and sew inside overalls.

Crocheted clothes for white dolls—shirt and blouse as above. Skirt—about 40 yds. color. Band as for full skirt. Rows 3, 4, 5: tr, inc in every 5th st. Close placket after 4th row. 1 rnd of white sc, 1 of colored tr, 1 of white sc, 1 of colored tr. Make straps as for overalls with small cross strap at front and back. Work tiny lazy daisy flowers on cross straps and band of skirt. Trousers same as panties without trim—make straps.

Shoes—15 yds. black. Ch 7, sk 1, sc in each st of ch, 3 sc in end, 6 sc in other side of ch. Inc at ends to keep work flat, work until there are 5 rnds on sole, work 3 rnds even, in next 2 rnds sk several

sts at one end to form toe. Try on foot, end last rnd on one side, ch strap across instep, sl st in other side of shoe to fasten.

Sketches (G) show clothes made of material. H and I give measurements by which paper patterns may easily be cut. Skirt is straight strip 30"x3 1/2" gathered into a band and hemmed.

DONKEY

This is made from 1 dark stocking (J)—which shows how pieces are cut. Turn hose wrong side out, press flat. Mark lines of mouth on both sides, do not cut out mouth. Cut off remainder of foot (L), fold lines on each side together and make dart from 1 to 2, then begin at 2 and sew up to 3 on neck working surplus out to fit. Turn hose, stuff ball of cotton about the size of an egg into nose, fill rest of head, pressing cotton firmly up into heel to form top of head. If neck seems too thick take a tuck under chin.

Tail—cut 6x4 1/2" from top of hose (J). About 4" will be double and 2" single. Split in 3 parts from single end to within 1/4" of top, braid double part tightly. Bind and tie where single part starts, clip ends into narrow strips.

Stuff body firmly until it measures 9" from front of head to tail. Cut hose leaving 1/2" beyond body, gather at 9" mark, pull together and stuff ends inside. Insert end of tail, pull thread tight and fasten.

Ear—split toe of hose through center (J). Seam and turn (b). For stiffening, cut 4 slightly larger ears of unbleached muslin, use 2 thicknesses together—turn edge under and sew to front of ear with long sts (c). Fold ears through center and sew in a small pleat at top of head (d). Applique or embroider eyes and nostrils (K and M).

Legs—4 cut 3"x5 1/4", seam, then gather one end, pull tight, turn. Stuff, turn top edge under on slant (e), and arrange with seams at back of front legs and at front of back legs—sew to body with longest side out. Leave 1/2" between legs.

Dry mops should be cleaned once a week. Soak in warm water to which a generous amount of salt has been added, wash in warm, soapy, water, rinse well and hang in sun to dry.

CROCHETED SLIPPERS

4 or 5 oz. knitting worsted for pair. About 2½ oz. navy or other basic color, 1 oz. white and ½ oz. red or delft blue, number 3 bone hook.

Directions make average size slipper with sole about 9½" long and 3½" wide at ball of foot—this should fit persons wearing 6 to 8 shoes. Draw outline of foot to determine size. For smaller slippers leave out required number of rows in sole—gauge-6 rows to inch. Add rows for a larger slipper. Make changes in groups of rows having no inc—in heel between rows 9-15, sole—in rows 32-35 and 37-43. For more width add 1 or more sts to the beginning ch and work as before.



Inner sole—is made separately and sewed to top, crochet tightly. Navy, ch 9. Row 1: sk 1 st, 2 sc in next st (this is an inc—all inc are made at the beginning (beg) or end of rows), sc to end, 2 sc in end, ch 1, turn, at end of each row. Row 2: sc, 2 in end. Row 3: inc beg and end. Row 4: even. Rows 5, 6: inc beg and end. Rows 7, 8: sk 1 at beg. Rows 9 through 15: even. Row 16: sk 1 at beg. Rows 17 through 21: even. Row 22: sk 1 at beg. Row 23: even. Row 24: inc beg and end. Rows 25, 26, 27: even. Row 28: inc beg and end. Rows 29, 30: even. Row 31: inc beg and end. Rows 32, 33, 34, 35: even. Row 36: inc at end. Rows 37 through 43: even. Row 44: sk 1 at beg. Row 45: even.

Rows 46 through 50: sk 1 at beg. Row 51: even. Rows 52, 53: sk 1 at beg. Rows 54, 55, 56: sk 1 at beg and next to last at end, sc in end. Cut, fasten.

Top—navy—ch 70, straighten ch, sl st to join ends. Rnd 1: ch 2, 69 sc in sts of ch, sl st in ch 2 to close, ch 2 to begin each rnd. Rnd 2: 30 sc, 2 sc in next (an inc), 1 sc, 2 in 1, 4 sc, 2 in 1, 1 sc, 2 in 1, 30 sc, sl st to close. Rnds 3, 4: even. Rnd 5: white—30 sc, (2 in 1, 1 sc) 8 times, even to end. Rnds 6, 7: even. Rnd 8: red or delft blue, 30 sc, (2 in 1, 1 sc) 5 times, even to end. Rnds 9, 10: even. Rnd 11: white—35 sc, (2 in 1, 2 sc) 6 times, 2 in 1, 35 sc. Rnds 12, 13: even. Rnd 14: navy—40 sc, (2 in 1, 1 sc) 5 times, 40 sc, cut. Rest of toe is in short rows. Row 1: count over 20 sts from seam, fasten in, work 62 sc, cut, fasten. Row 2: sk 10 sts of row 1, 42 sc, ch 1, turn. Row 3: 6 sl st, 30 sc, 1 sl st, ch 1, turn. Row 4: sk 1, 28 sc, 1 sl st, ch 1, turn. Row 5: 2 sl st, 24 sc, 1 sl st, ch 1, turn. Row 6: sk 1, 22 sc, 1 sl st, ch 1, turn. Row 7: sk 1, 19 sc, 1 sl st, ch 1, turn. Row 8: sk 1, 15 sc, 1 sl st, ch 1, turn. Row 9: sk 1, 13 sc, 1 sl st, ch 1, turn. Row 10: sk 1, 10 sc, 1 sl st. Row 11: sk 1, 8 sc, 1 sl st, ch 1, turn. Row 12: sk 1, 6 sc, 1 sl st, cut, fasten.

From inside of top, work 3 rnds of white even to turn back for cuff. Pin sole and top together at toe and heel and sew with strong thread. Cut an outer sole from felt (old felt hats may be used—piece and whip pieces together if necessary). Heavy woolen material may be substituted.

Pompons—1 white and 1 navy—wrap yarn around 4 fingers about 30 times, tie tightly through center and clip ends, sew to slipper.

Address All Correspondence and Send Orders to