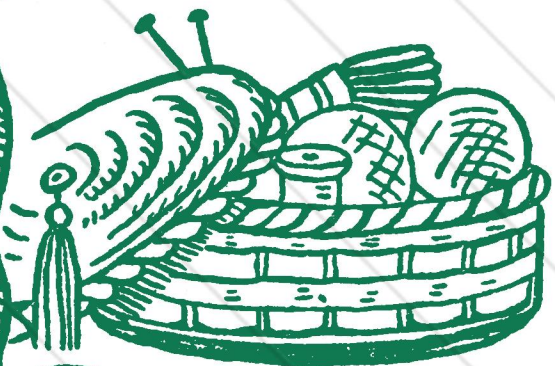
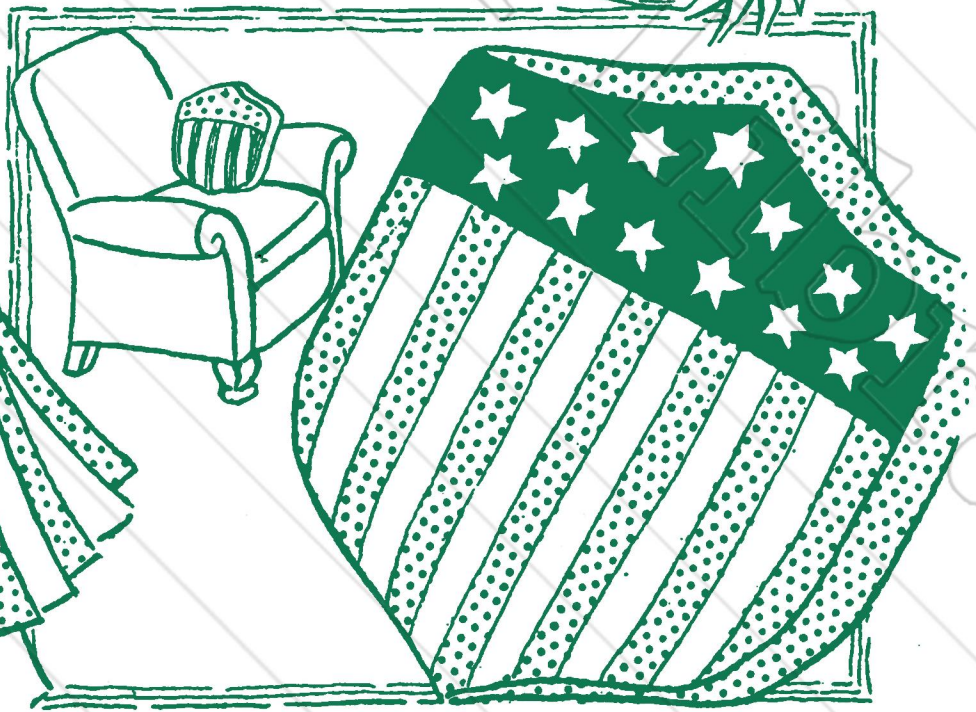
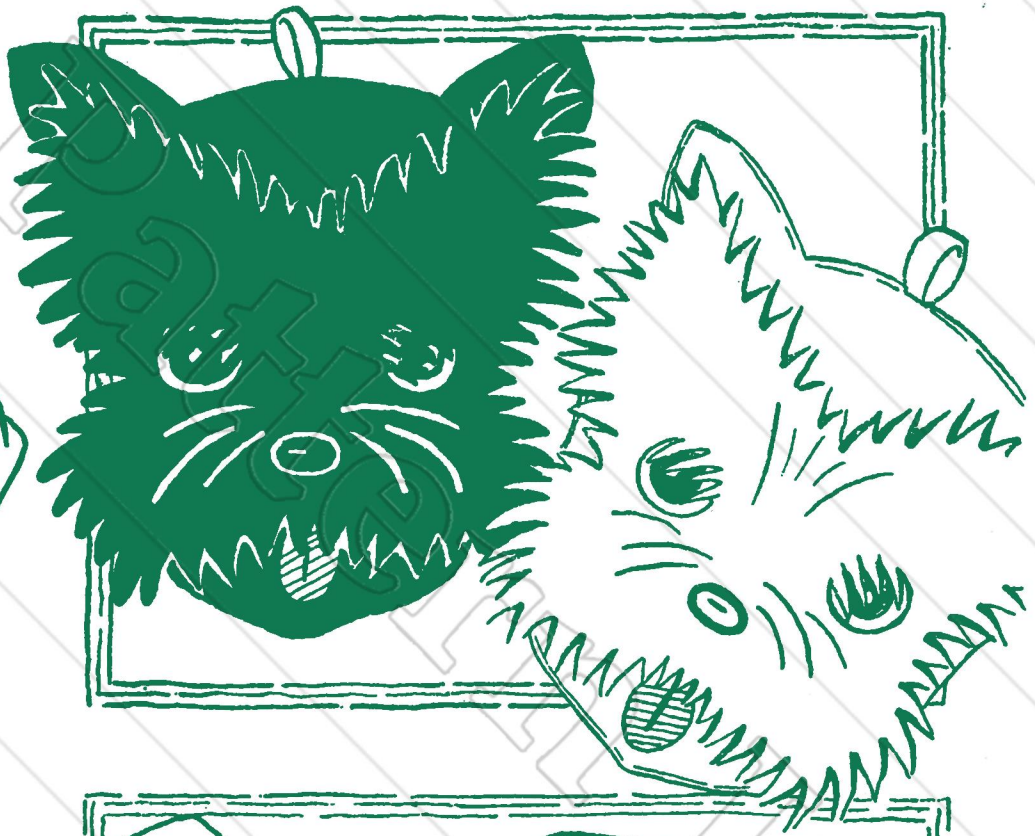
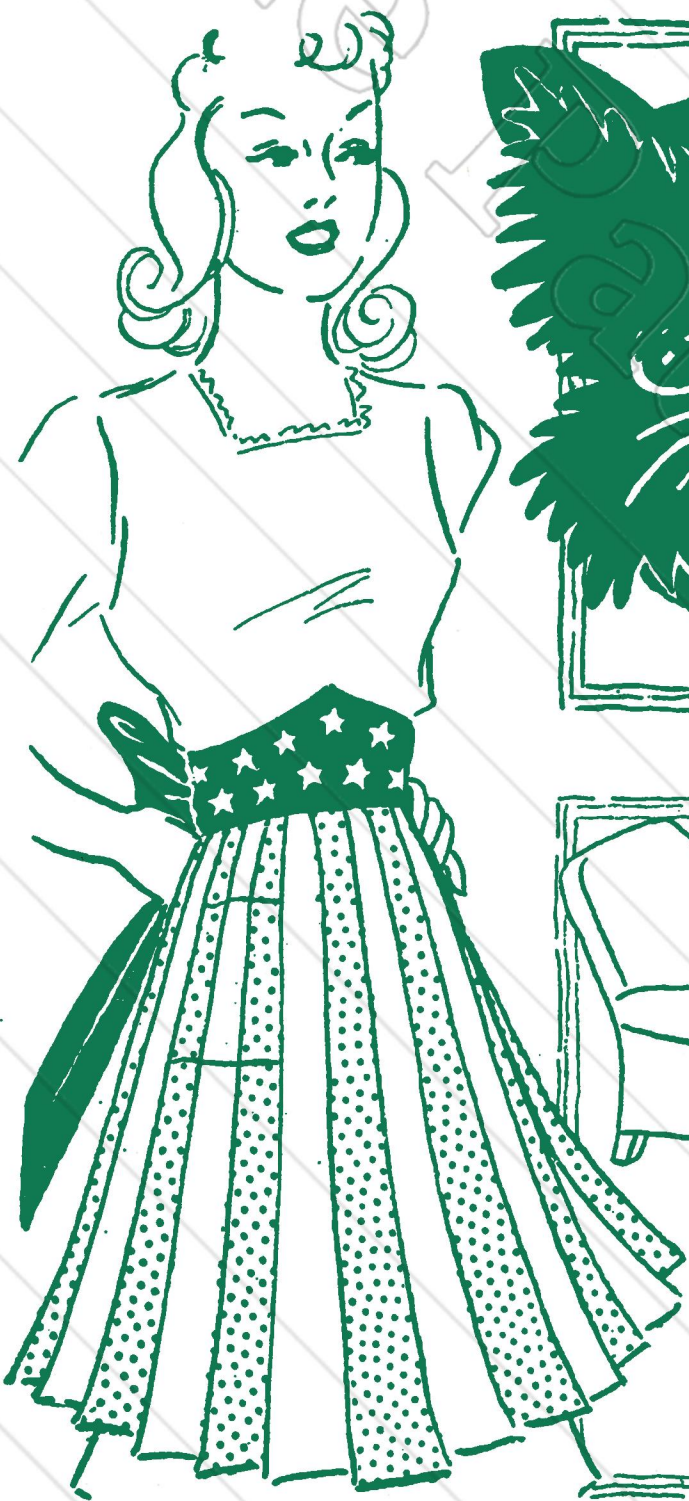


The

Work Basket

HOME AND NEEDLECRAFT
For PLEASURE and PROFIT



IDEAS for the Bazaar, the Home,
Gifts and Sparetime Money-makers
— with Many Inexpensive, Easily
Made Articles that find a Ready Sale.

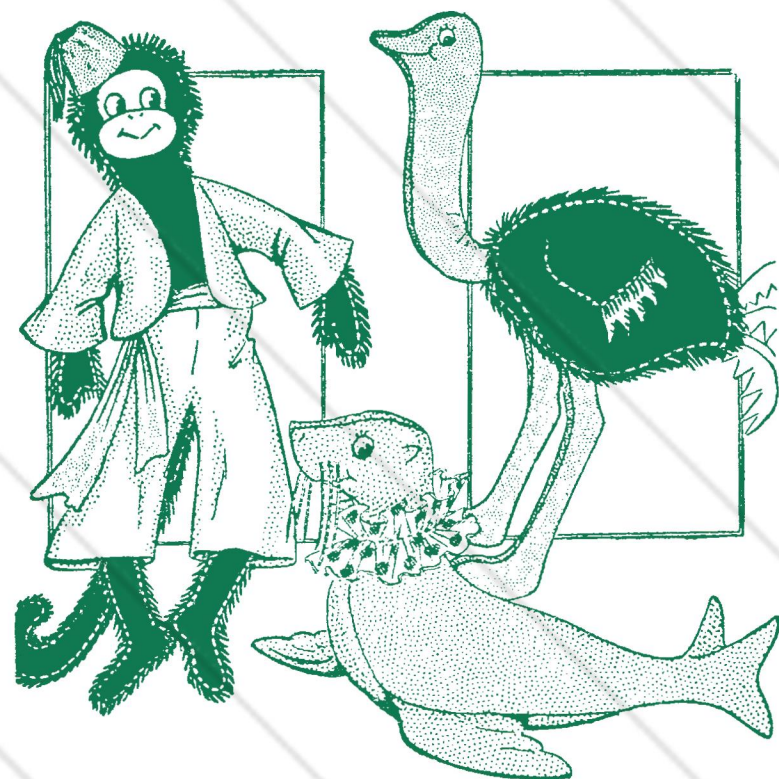
Your Next Workbasket

On the transfer there will be three pairs of panholders—the cunning dog



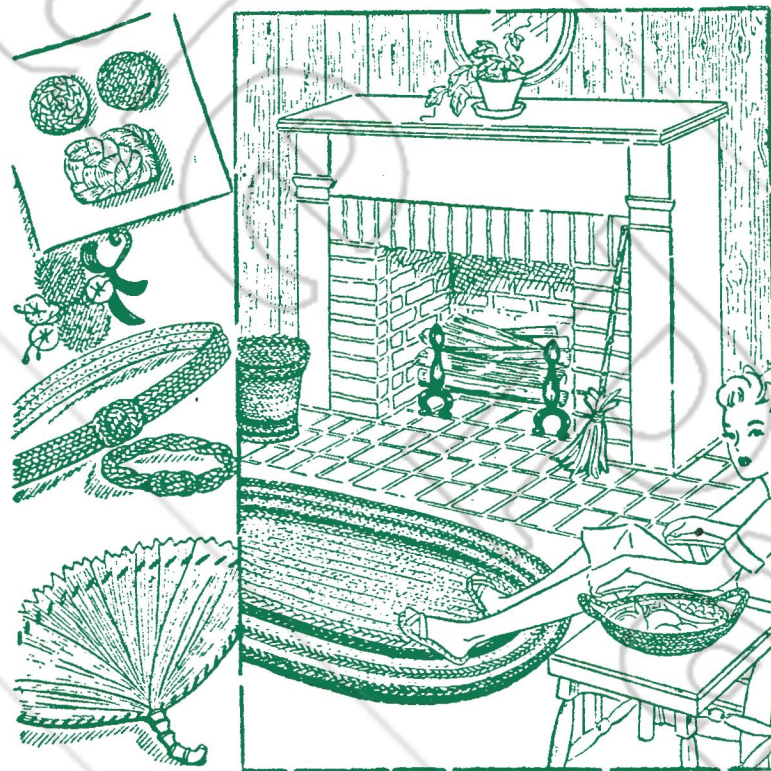
and cat, two with appliqued bouquets, and a pair of animated flower faces.

Also you will receive patterns for three adorable stuffed toys. There is Marty the monkey, Oswald the ostrich, and

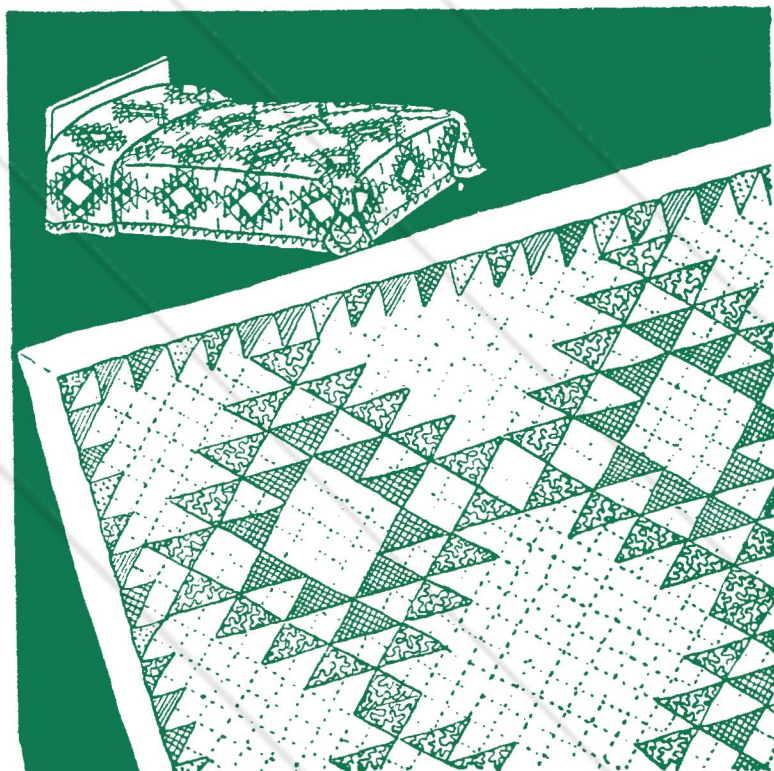


Emeline the seal. Both panholders and toys are dandy bazaar and gift fill-ins.

The booklet gives you instructions in a delightful new craft which literally brings the husking bee indoors. Yes, corn shucks were actually used to make all of the items shown. The very commonplaceness and abundance of the material makes this a fascinating work.



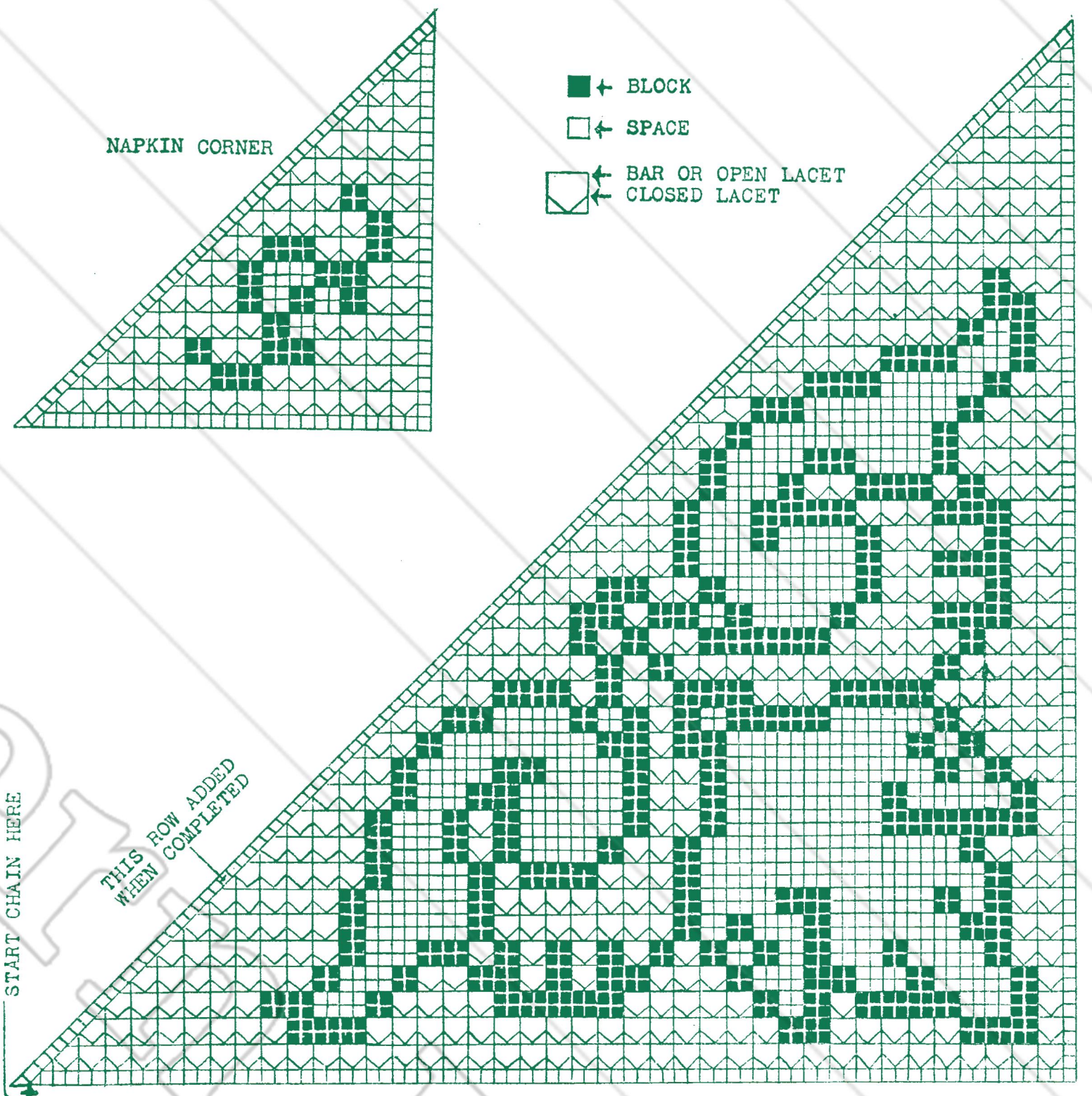
In the illustration all of the items at the left—buttons, corsage, belt, bracelet and fan were made of shucks, as were the rug, wastebasket, fruit bowl, slippers and hearthbroom shown in the fireside scene.



The Indian Plume is a quilt pieced of gay prints and plain colors with white. The finished size is about 87x101.

Crocheted Corner

Use number 40 white mercerized crochet thread and a number 14 hook. With a gauge of 7 spaces or blocks to the inch, the resulting corner will measure approximately 11 inches on the short sides.



Begin at the bottom of the chart—first making a chain having 3 sts for each space or square in the first row of the chart (do not count the row of spaces on the diagonal side). As there are 81 spaces or squares, ch 243 plus 1, this makes 244, and to turn on the straight edge you will always need to ch 5 additional—a total of 249.

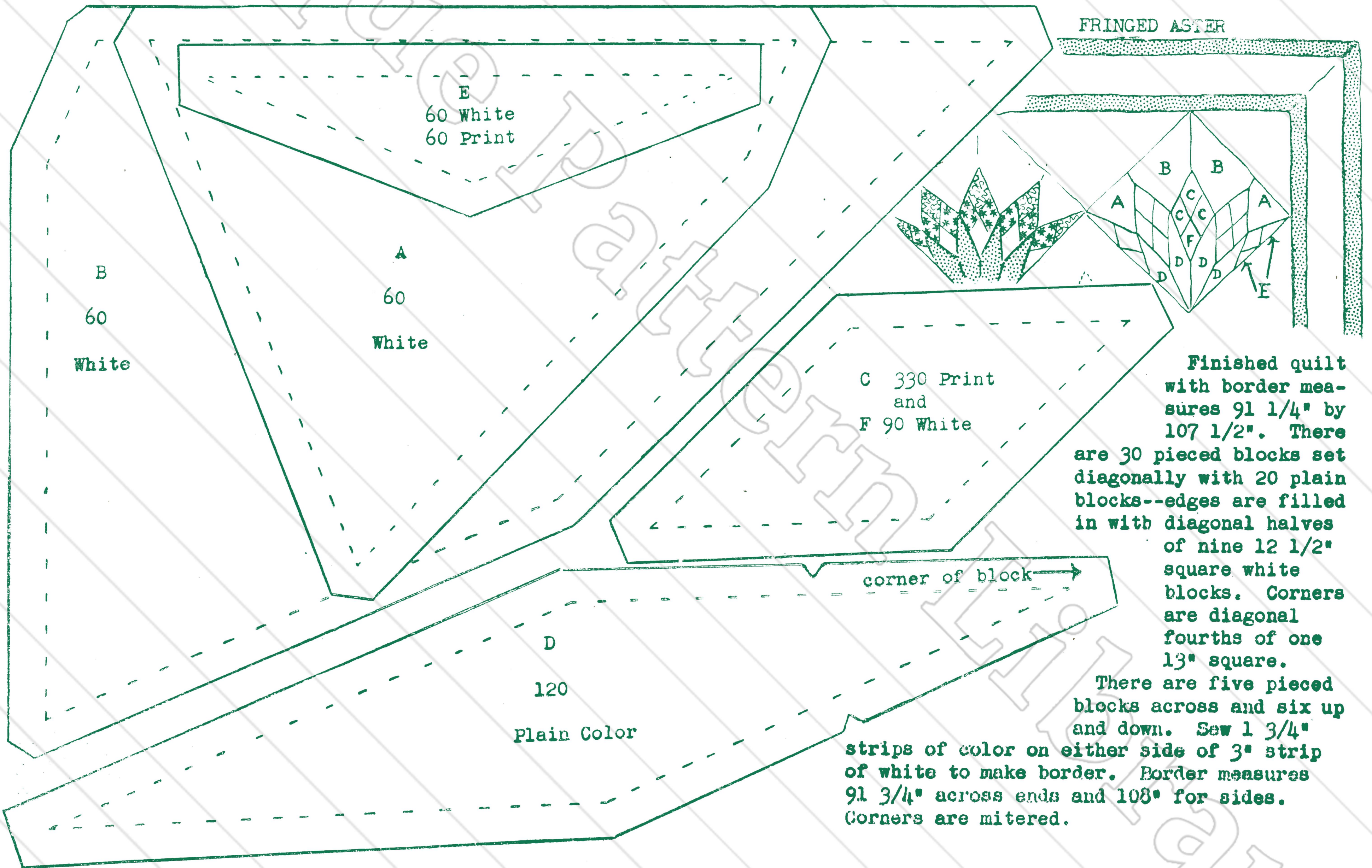
Row 1: sk 7 sts of ch, dc in next st, * ch 2, sk 2 sts of ch, dc in next, repeat from * until there are 80 spaces or meshes—hold the last two loops of the last dc on hook—There should be 3 remaining sts of ch, thread over hook twice (for a triple) insert hook in end of ch and complete triple, drawing the last loop through all three loops in hook. This forms a 3 cornered half-space and serves to reduce the width of the work by one space.

Row 2: ch 3, turn, dc in first dc of previous row to make another half-space,

or in this row it might be called a half closed lacet. A closed lacet is indicated by two lines which form a V. To make a closed lacet—* ch 3, sc in next dc, ch 3, dc in next dc, repeat from * over all but the last space at end of row, ch 2, dc in end of last row to make a space.

Row 3: ch 5, turn, dc in next dc, * ch 5, sk over entire V or closed lacet and work a dc in next dc, this forms a bar or open lacet. Repeat from * to make all of the whole open lacets shown, at the end there is a partial open lacet, which is made by ch 2, tr into next dc.

In the 4th row the closed lacets are worked as in row 2 except that the sc is worked in the 3rd st of the 5-ch bar instead of in a dc. In this row the motif begins with a number of blocks—a block is a group of dc, 4 dc for a single block and 3 for each additional. These are worked into each ch and dc



FRINGED ASTER

E
60 White
60 Print

B
60
White

A
60
White

C 330 Print
and
F 90 White

D
120
Plain Color

corner of block →

Finished quilt with border measures 91 1/4" by 107 1/2". There are 30 pieced blocks set diagonally with 20 plain blocks--edges are filled in with diagonal halves of nine 12 1/2" square white blocks. Corners are diagonal fourths of one 13" square.

There are five pieced blocks across and six up and down. Sew 1 3/4" strips of color on either side of 3" strip of white to make border. Border measures 91 3/4" across ends and 108" for sides. Corners are mitered.

You will need
8 1/2 yds. white 1 3/4 yds. color
2 yds. same print or miscellaneous print

A tracing of the pieced blocks made in each plain block will become an attractive quilting design.

of previous row. In row 4 work the dc which completes the last lacet before a block is shown on chart, then work 5 dc in next 5-ch bar, 1 dc in next dc (this makes 2 blocks), continue for as many blocks as are needed.

The 5th row repeats the 3rd with blocks over blocks in the 4th row. In the 6th row part of the motif is done in regular filet spaces formed by ch 2, sk 2, dc in next, just as in the first row.

If you desire more compact work you may make smaller spaces inside the row of solid blocks which outline the motif. To do this ch 1, sk 1, and dc in the next, instead of ch 2, sk 2. This will result in 3 spaces over each 2 blocks while formerly there were 2 spaces over 2 blocks.

At the tip, when finishing the corner, ch 2, turn, and work a tr in the next dc. To work the row of spaces across the diagonal edge, ch 6, turn, dc in at base of 6 ch, this makes a triangular half-space, ch 2 and dc at evenly spaced intervals to end, ch 3 at end and tr back in at base of last dc.

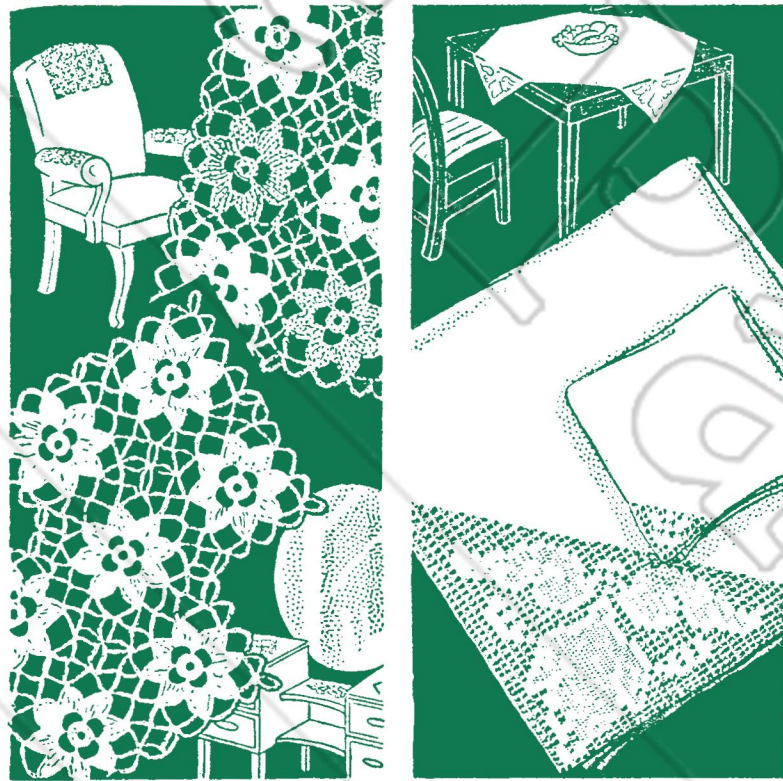
Work a row of sc into the sts on diagonal edge and press corner with a damp cloth. These corners may be set on a cloth 36 inches square or larger. Fit the crochet to the material and mark diagonally across corners of cloth just above crochet, stitch across corners once or twice with the machine to keep the bias corner from stretching when it is cut. Roll or turn back a narrow hem and whip, sew crochet to this, then work a row of sc completely around corners and sides of cloth to finish.

Make napkin corners in the same manner and set on 10 or 12-inch napkins.

Flower Garden Medallion

For a chair set, place mats, buffet set, and other such items where heavier work is desirable, use number 5 mercerized crochet thread and a number 6 hook. This will give you a medallion approximately $2\frac{1}{4}$ inches square. For vanity set or other pieces where daintier work is desired, use number 10 thread and a number 10 hook. This medallion will be about $1\frac{3}{4}$ inches square. One medallion requires approximately 6 yds. of the number 5 thread and $5\frac{1}{2}$ yds. of the number 10 thread.

All of the medallions may be made of white, every other one may be of color, or two pastels may be used together—this is especially pretty for a vanity set. The illustration shows two



methods of setting the medallions together, one has a straight edge the other features an irregular edge.

Medallion—ch 7, sl st in first st of ch to make ring. Rnd 1: ch 1, 11 sc on ring, sl st in ch 1 to close. Rnd 2: ch 8, sk 2 sc, sc in next sc, (ch 7, sk 2 sc, sc in next) twice, ch 7, sc in first st of ch 8.

Rnd 3: 3 sl st up 8 ch, ch 5, 3 double triple (dtr) . . . thread over hook 3 times and work loops off two at a time, on same 8 ch, holding the last loop of the 5 ch and of each dtr on hook, thread over and draw through all loops on hook (a cluster made). * Ch 7, a 4 dtr cluster on same 8 ch with last cluster, ch 7, sc in sc of last rnd, ch 7, a 4 dtr cluster on next 7 ch, repeat from * all around. At end of rnd, ch 5, dc in top of first cluster.

Rnd 4: ch 7, sc over first 7 ch between 2 petals, * ch 7, sc on same ch with last sc, ch 7, sc on next 7 ch at other side of next petal, ch 7, sc on 7 ch before next petal, ch 7, sc on 7 ch between next 2 petals, repeat from * all around. At end, ch 7, sl st in dc made at beginning of rnd.

Second medallion: work first 3 rows as for first medallion. In rnd 4: ch 7, sc on corner 7 ch, ch 3, then join to first medallion by making a sl st in center st of a corner 7 ch on first medallion, ch 3, sc back on same corner ch of second

medallion, ch 3, sl st in center st of next 7 ch on first medallion, ch 3, sc on next 7 ch on second medallion; ch 3, sc in center of next 7 ch on first medallion, ch 3, sc on next 7 ch on second medallion, ch 3, sl st in center st of next 7 ch on first medallion, ch 3, sc on next corner ch on second medallion, ch 3, sl st in center of corner ch on first medallion, ch 3, sc back in same corner on second medallion. Continue around edge of second medallion as for first.

Join another medallion in the same way. In working the next row the first medallion is joined to the first row on only one side with additional medallions joined on two sides. In joining four corners all sts are worked into the same place.

To sprinkle clothes quickly, turn the nozzle of the hose to the fine spray and sprinkle them while they are still hanging on the line.

If some article of wearing apparel or linen has too much bluing in it, soak for several hours in one quart of warm water with two tablespoons of vinegar in it. Wash out in the usual way.

Laundering greasy clothes is made simple by first soaking the spotted areas in kerosene for half an hour and then washing the garment in good hot suds.

An excellent polish for mahogany is a tablespoon of olive oil mixed with a teaspoon of vinegar.



Applique Crochet Panholders

On these panholders, fruit, leaves and stems are crocheted in their natural colors in single thread, then whipped to a white basic panholder that has been worked to desired size in double thread. Use mercerized crochet cotton no heavier than No. 5 perle cotton, and a No. 4 hook. Single crochet is used throughout and should be done tightly. Gauge—7 rows to 1 inch.

For the Pear panholder, you will need 90 yds. white (45 yds. double), 15 yds. yellow, 25 yds. light green, 1 yd. dark green, 3 yds. rose.

BASIC PANHOLDER—with white (double) ch 4, sl st in 1st st of ch to form a ring. Ch 1, work 8 sc over this ring, sl st in 1st sc to close round (rnd). Close ends of each rnd with a sl st and always ch 1 before beginning a new rnd. To complete the basic panholder, work 17 more rnds of white sc, increasing (inc) as needed in each rnd to keep work smooth and flat and as nearly round in shape as possible. After the last rnd of white fasten and cut. Then with light green (single strand) sc around panholder—work over ends of white thread. Panholder should measure about 6 inches across.

PEAR—with yellow, ch 8, turn. 1st row: skip (sk) 1 st of ch, 3 sc, sl st in center st, 3 sc. 2nd row: continue on around other side working 7 sc in sts of beginning ch, ch 1, turn. 3rd row: 7 sc, ch 1, turn. Repeat 3rd row 6 more times. 10th row: 2 sc in 1 st, 5 sc, 2 sc in last st, ch 1, turn. 11th row: 9 sc, ch 1, turn. 12th row: 11 sc (inc 1 st at each end), ch 1, turn. 13th row: 11 sc, ch 1, turn. 14th row: 13 sc, (inc 1 st at each end), ch 1, turn. 15th row: 7 yellow sc, bring rose through on last yellow sc, (in changing colors always bring second color through last 2 loops of last st in first color), 4 rose sc, bring yellow back on last rose sc, drop rose, 2 yellow, ch 1, turn. 16th row: 2 yellow, pick up rose, 7 rose, drop rose, 4 yellow, ch 1, turn. 17th row: 6 yellow, 5 rose, 2 yellow, ch 1, turn. 18th row: 3 yellow, 4 rose, 6 yellow, ch 1, turn. 19th row: 7 yellow, 2 rose, 4 yellow, ch 1, turn. 20th row: 4 yellow, 1 rose, 8 yellow, ch 1, turn. Cut rose. 21st row: 13 yellow, ch 1, turn. 22nd row: sk 1 st, 10 sc, sk next st and sc in last st, ch 1, turn. 23rd row: sk 1 st, 4 sc, sl st in 5th st, 4 sc, sl st in last st. Fasten off. Work a row of yellow sc completely around pear.

LEAF—with light green, ch 7, turn. 1st row: sk 1 st, 6 sc, ch 1, turn. 2nd row: sk 1 st, 5 sc, ch 1, turn. 3rd row: 5 sc, ch 1, turn. Repeat 3rd row twice. 6th row: sk 1 st, 4 sc, ch 1, turn. 7th row: sk 1 st, 3 sc, ch 1, turn. 8th row, 2 sc, ch 1, turn. 9th row: sk 1 st, 1 sc, fasten off. Repeat these directions for a second leaf. When both leaves are completed, sc around edge with light green, then with dark green sl st veins in leaves. **STEM**—with light green, ch 6, turn. Sk 1 st of ch, 5 sc in sts of ch, sl st in end of ch, fasten off.

Place pear, leaves and stem on basic white panholder as shown in illustration. Whip securely with thread the color of applique on which you are working. To make a loop for hanging, bring thread through at top of panholder, ch 12, sl st back in same st of pan-

holder, sc over ch, making sts close together, sl st in beginning st, fasten off.

A second basic white panholder is worked by same directions as first. And for the Cherry Panholder, you will need 90 yds. white (45 yds. double), 7 yds. red, 30 yds. light green, 1 yd. dark green.

CHERRY—with single thread of red, ch 3, sl st in 1st of ch to form ring, ch 1, work 6 sc in ring, close each rnd with sl st in 1st sc and ch 1 to begin next rnd. 2nd rnd: 2 sc in each st of previous rnd. 3rd rnd: inc 1 sc in every 3rd st. 4th rnd: work 2 sc in each st of previous rnd halfway around cherry, then work 2 sl sts and continue as before, sl st in beginning st and fasten off. Make three.

LEAF—with single thread of light green, ch 2, turn. 1st row: sk 1 st of ch, 1 sc in other st of ch, ch 1, turn. 2nd row: 2 sc in 1 st, ch 1, turn. 3rd row: * 2 sc in each st, ch 1, turn. 4th row: 4 sc, ch 1, turn. 5th row: 3 sc, 2 sc in last st, ch 1, turn. 6th row: 4 sc, 2 sc in last st, ch 1, turn. 7th row: 6 sc, ch 1, turn. Repeat 7th row five more times. 13th row: sk 1 st, 5 sc, ch 1, turn. 14th row: sk 1 st, 4 sc, ch 1, turn. 15th row: sk 1 st, 3 sc, ch 1, turn. 16th row: sk 1 st, 2 sc, ch 1, turn. 17th row: sk 1 st, 1 sc, ch 2, draw through to fasten off.* To begin second leaf, ch 3, sk 1 st of ch, work 2 sc in each of 2 remaining sts of ch, then repeat from * to * in first leaf directions. Sc around first leaf. Reverse second leaf and crochet around it—use first leaf for left side and second on right side. With dark green, sl st veins in leaves.

MIDDLE STEM—with light green, ch 26, sk 1 st of ch, sc back, fasten off. Count over 8 sts from one end, insert hook, ch 9 with green, sc back, sl st in first stem, fasten off.

SIDE STEM—ch 19 with green, sc back, fasten off.

Place cherries, leaves and stems on second basic panholder as shown in illustration. Whip securely with thread the color of applique on which you are working.

Address All Correspondence and Send Orders to

THE COLONIAL COMPANY
Box 166, Kansas City, Mo.