

254



# Edgings

FOR ALL PURPOSES

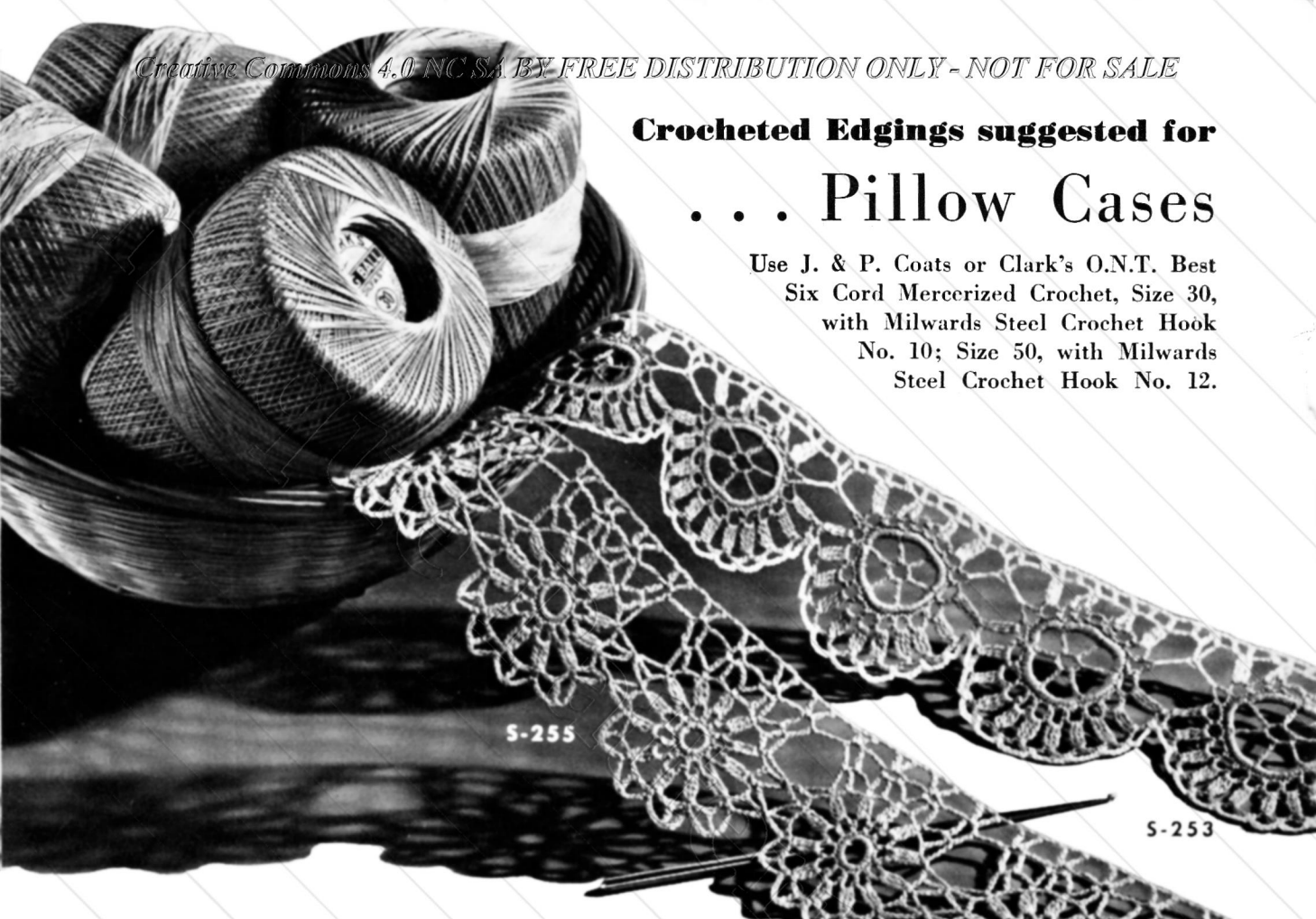
S-256



S-251

# Crocheted Edgings suggested for ... Pillow Cases

Use J. & P. Coats or Clark's O.N.T. Best Six Cord Mercerized Crochet, Size 30, with Milwards Steel Crochet Hook No. 10; Size 50, with Milwards Steel Crochet Hook No. 12.



S-255

S-253

## Pillow Case Edging S-251

### MATERIALS:

CLARK'S O.N.T. BEST SIX CORD MERCERIZED CROCHET, Art. B.4, Size 30: 8 balls of No. 4-A Mid Pink and 2 balls of No. 8 Blue.

Milwards Steel Crochet Hook No. 10.  
A pink pillow case.

Starting at narrow edge with Pink, ch 28. **1st row:** Dc in 7th ch from hook, (ch 2, skip 2 ch, dc in next ch) twice; ch 2, skip 2 ch, in next ch make dc, ch 5 and dc; (ch 2, skip 2 ch, dc in next ch) 3 times; skip 2 ch, tr in next ch. Ch 4, turn. **2nd row:** Skip first sp, dc in next dc, (ch 2, dc in next dc) twice; ch 2, in center ch of next sp make dc, ch 5 and dc; (ch 2, dc in next dc) 3 times; tr in top of starting chain. Drop Pink, attach Blue. Ch 4, turn. **3rd row:** Skip first sp, (dc in next dc, 2 dc in next sp) twice; dc in next dc, in next sp make 3 dc, ch 5 and 3 dc; (dc in next dc, 2 dc in next sp) twice; dc in next dc, tr in top of turning chain. Ch 4, turn. **4th row:** Skip first tr and next 3 dc,

dc in next 7 dc, in next sp make 3 dc, ch 5 and 3 dc; dc in next 7 dc, tr in top of turning chain, drop Blue, pick up Pink. Ch 4, turn. **5th row:** Skip first tr and next 3 dc, dc in next dc, (ch 2, skip 2 dc, dc in next dc) twice; ch 2, in center ch of next sp make dc, ch 5 and dc; ch 2, dc in next dc, (ch 2, skip 2 dc, dc in next dc) twice; tr in top of turning chain. Ch 4, turn. Repeat 2nd to 5th rows incl until piece measures same as pillow case, ending with 4th row. Break off. Sew narrow ends together.

**RUFFLE . . . 1st rnd:** Attach Pink to any sp and sc closely around, making 4 sc in each sp around. Join. **2nd rnd:** Sc in same place as sl st, \* ch 6, skip 2 sc, sc in next sc. Repeat from \* around. Join. **3rd to 12th rnds incl:** Sl st to center of next loop, sc in same loop, \* ch 7, sc in next loop. Repeat from \* around. Join. Break off at end of 12th rnd. **13th rnd:** Attach Blue to any loop, in each loop around make sc, half dc, 4 dc, half dc and sc. Join and break off. Work a rnd of sc as for first rnd of Ruffle on opposite side. Sew Edging to pillow case. Starch lightly and press.

## Pillow Case Edging and Insertion S-252

### MATERIALS:

J. & P. COATS BEST SIX CORD MERCERIZED CROCHET, Art. A.104, Size 30: 4 balls of No. 9 Yellow; or CLARK'S O.N.T. BEST SIX CORD MERCERIZED CROCHET, Art. B.4, Size 30: 9 balls of No. 9 Yellow.

Milwards Steel Crochet Hook No. 10.  
A pair of yellow pillow cases.

**INSERTION . . .** Starting at narrow edge, ch 28. **1st row:** Sc in 2nd ch from hook, sc in next 2 ch, \* ch 3, sc in 3rd ch from hook (picot made), sc in next 3 ch, ch 1, sc in next 3 ch. Repeat from \* across, do not turn at end of row. **2nd row:** Ch 18, (drop loop from hook, insert hook in next ch-1 sp preceding last sc-group, draw dropped loop through, in sp just formed make 3 sc, picot and 3 sc, ch 12) 3 times; drop loop from hook, insert hook in first sc on row, draw dropped loop through, in sp just formed make 3 sc, picot and 3 sc, ch 1; now, working across sps make 3 sc, picot, 3 sc in first sp, (ch 1, 3 sc, picot and 3 sc in next sp) 3 times. Repeat 2nd row until piece measures same as pillow case, ending with 3 sc, picot and 3 sc in last sp. Break off. Sew narrow ends together.

Now work around as follows: Attach thread to any chain sp on side, in same  
*Continued on page 3*

**CROCHET ABBREVIATIONS . . .** ch—chain      sc—single crochet  
half dc—half double crochet    dc—double crochet    tr—treble    d tr—double treble  
tr tr—triple treble    sl st—slip stitch    bl—block    sp—space

**S-252** *Continued from page 2*

sp make 3 sc, picot and 3 sc; \* ch 1, in next sp make 3 sc, picot and 3 sc. Repeat from \* around. Join and break off.

**EDGING . . .** Work exactly as for Insertion, having an even number of sp rows. Do not break off at end of last rnd.

**SCALLOPED EDGE . . . 1st rnd:** Sc in same place as sl st, \* ch 5, sc in next ch-1 sp. Repeat from \* around. Join. **2nd rnd:** Sl st to center of next sp, sc in same sp, \* ch 1, in next sp make (dc, ch 1) 8 times; sc in next sp. Repeat from \* around. Join. **3rd rnd:** Sl st in next sp, sc in same sp, \* (sc in next sp, ch 3) 6 times; sc in next 3 sps. Repeat from \* around. Join and break off.

Sew Edging and Insertion in place. Cut out material in back of Insertion, leaving  $\frac{1}{8}$  inch for hems on each side. Sew hems neatly in place. Starch lightly and press.

**Pillow Case Edging**  
**S-253**

**MOTIF . . .** Starting at center with Robinette, ch 10. Join with sl st to form ring. **1st rnd:** Ch 9, (tr in ring, ch 5) 5 times. Join to 4th ch of ch-9. **2nd rnd:** Working over 8 strands of Robinette, make 10 sc in each sp around. Join. **3rd rnd:** Sc in same place as sl st, \* ch 5, skip 2 sc, sc in next sc. Repeat from \* around. Join and break off. Make necessary number of motifs (1 motif will make a 2-inch scallop on completed edging).

**SCALLOPED EDGE . . . 1st rnd:** Attach Robinette to any loop on a motif, ch 4, holding back on hook the last loop of each tr make 2 tr in same loop, thread over and draw through all loops on hook (cluster made); \* (ch 5, make a 3-tr cluster in next loop) 10 times; make a cluster in any loop on next motif. Repeat from \* until all motifs have been joined. Join last cluster on last motif to tip of first cluster on first motif. Break off. **2nd rnd:** Attach White to first sp on any motif, sc in same sp, \* (ch 5, sc in next sp) 9 times; sc in first sp on next motif. Repeat from \* around. Join and break off.

**HEADING . . . 1st rnd:** Attach White to 2nd free loop on inner edge of any motif, ch 4, make a 2-tr cluster in same loop, \* ch 5, holding back on hook the last loop of each st, make a tr in next loop and a dc in following loop, thread over and draw through all loops on hook (joint-st made); ch 5, skip 1 loop, make another joint st by making dc in next loop and tr in following loop, ch 5, cluster in next loop, ch 8, make a joint-tr by making tr in last loop on this motif and in first loop on next motif, ch 8, 3-tr cluster in next loop. Repeat from \* around. Join. **2nd rnd:** Ch 5, \* dc in next sp, (ch 2, dc in next joint st, ch 2, dc in next sp) twice; ch 2, dc in tip of next cluster, ch 2, make a joint-dc by making a dc in same loop as last dc and in next loop, ch 2, dc in same loop, ch 2, dc in tip of next cluster, ch 2. Repeat from \* around. Join and break off.

**Pillow Case Edging**  
**S-254**

**MOTIF . . .** Starting at center with Beauty Pink, ch 12. Join with sl st to form ring. **1st row:** Ch 3, 10 dc in ring. Ch 4, turn. **2nd row:** Skip first dc, (dc in next dc, ch 1) 9 times; dc in top of ch-3. Break off. Make necessary number of motifs (1 motif will make a  $1\frac{3}{4}$  inch scallop on completed edging).

**SCALLOPED EDGE . . . 1st rnd:** Attach thread to first sp on last row of any motif, ch 4, tr in same sp, \* (ch 5, holding back on hook the last loop of each tr make 2 tr in next sp, thread over and draw through all loops on hook—cluster made) 9 times; cluster in first sp on next motif. Repeat from \* around until all motifs have been joined. Join last cluster to first tr. **2nd rnd:** Sl st to center of first sp, sc in same sp, \* (ch 5, sc in next sp) 8 times; sc in first sp on next scallop. Repeat from \* around. Join and break off.

**HEADING . . . 1st rnd:** Attach thread to ring on any motif, ch 8, \* tr over end dc of next row, ch 5, holding back on hook the last loop of each d tr make d tr over end dc of next row and corresponding dc on next motif, thread over and draw through all loops on hook (joint-d tr made); ch 5, tr in end dc of next row on same motif, ch 5, dc in ring, ch 5. Repeat from \* around. Join to 3rd ch of ch-8. **2nd rnd:** Ch 8, \* dc in next tr, ch 5, dc in tip of next joint-d tr, ch 5, dc in next tr, ch 5, dc in next dc, ch 5. Repeat from \* around. Join. **3rd rnd:** Ch 8, \* dc in next dc, ch 5. Repeat from \* around. Join and break off.

**Pillow Case Edging**  
**S-255**

**FIRST MOTIF . . .** Starting at center with Chartreuse Green, ch 12. Join with sl st to form ring. **1st rnd:** 24 sc in ring. Join. **2nd rnd:** Sc in same place as sl st, \* ch 5, skip next sc, sc in next sc. Repeat from \* around. Join. **3rd rnd:** Sl st in next loop, ch 4, holding back on hook the last loop of each tr make 2 tr in same loop, thread over and draw through all loops on hook (cluster made); \* ch 5, make a 3-tr cluster in next loop. Repeat from \* around. Join to tip of first cluster. **4th rnd:** Sc in same place as sl st, \* ch 5, tr in center ch of next sp, ch 5, sc in tip of next cluster. Repeat from \* around. Join and break off.

**SECOND MOTIF . . .** Work as for First Motif until 3 rnds have been completed. **4th rnd:** Sc in same place as sl st, ch 5, tr in center ch of next sp, sl st in any tr on First Motif, ch 5, sc in tip of next cluster on Second Motif, ch 5, tr in center ch of next sp, sl st in next tr on First Motif, ch 5, sc in tip of next cluster on Second Motif. Complete rnd as for First Motif (no more joinings).

Make necessary number of motifs, joining as Second Motif was joined to First Motif, leaving 4 points free on each side of joining. Join last motif to First Motif.

**HEADING . . . 1st rnd:** Attach thread to first ch-5 loop on first free point of any motif, ch 7, tr in next ch-5 loop, \* (ch 3, sc in first loop on next point, ch 3, sc in next loop on same point) twice; ch 3, tr in first loop on next point, ch 3, tr in next loop on same point, ch 4, tr in first loop on next free point, ch 3, tr in next loop on same point. Repeat from \* around. Join. **2nd rnd:** Sl st in first sp, ch 7, tr in same sp, \* ch 3, skip next sp, in next sp make tr, ch 3 and tr. Repeat from \* around. Join and break off.

**Pillow Case Edging and Insertion**  
**S-256**

**EDGING—First Motif . . .** Starting at center with Shaded Lt. Yellows, ch 11. Join with sl st to form ring. **1st rnd:** Ch 3, 23 dc in ring. Join to top of ch-3. **2nd rnd:** Sc in same place as sl st, \* ch 5, skip next dc, sc in next dc. Repeat from \* around. Join and break off.

**SECOND MOTIF . . .** Work as for First Motif until first rnd has been completed. **2nd rnd:** Sc in same place as sl st, ch 2, sl st in any loop on First Motif, ch 2, skip next dc on Second Motif, sc in next dc, ch 2, sl st in next loop on First Motif, ch 2, skip next dc on Second Motif, sc in next dc. Complete rnd as for First Motif (no more joinings).

Make necessary number of motifs until piece is length desired, joining as Second Motif was joined to First Motif, leaving 4 loops free on each side of joining. Join last motif to First Motif.

**HEADING . . . 1st rnd:** Attach thread to first free loop on any motif, ch 8, \* sc in next loop, ch 5, sc in next loop, ch 5, holding back on hook the last loop of each dc make dc in next loop and in first loop on next motif, thread over and draw through all loops on hook (joint-dc made), ch 5. Repeat from \* around. Join to 3rd ch of ch-8. **2nd rnd:** Ch 8, \* (dc in next sc, ch 5) twice; dc in next joint-dc, ch 5. Repeat from \* around. Join and break off.

**SCALLOPED EDGE . . . 1st rnd:** Attach thread to first free loop of any motif on opposite side, ch 4, tr in same loop, ch 5, dc in top of tr, \* holding back on hook the last loop of each tr make 2 tr in next loop, thread over and draw through all loops on hook (cluster made); ch 5, dc in tip of cluster, cluster in same loop, ch 5, dc in tip of cluster, in next loop make (cluster, ch 5, dc in tip of cluster) twice; cluster in next loop and in first loop on next motif, ch 5, dc in tip of cluster. Repeat from \* around, ending with cluster in last free loop. Join and break off.

**INSERTION . . .** Work as for Edging, omitting Scalloped Edge and making Heading on both sides of motifs.

## Braid Edging, Hairpin Lace and Irish Crochet Edgings

For Runner, use J. & P. Coats or Clark's O.N.T. Best Six Cord Mercerized Crochet, Size 30, with Milwards Steel Crochet Hook No. 10. For Irish Crochet Edgings, use J. & P. Coats Tatting-Crochet, Size 70, with Milwards Steel Crochet Hook No. 13; or J. & P. Coats Best Six Cord Mercerized Crochet, Size 100, with a No. 15 or 16 hook.



### Hairpin Lace Apron Edging S-257

#### MATERIALS:

J. & P. COATS BEST SIX CORD MERCERIZED CROCHET, Art. A.104, Size 30: 1 ball each of No. 123-A Flamingo and No. 49 Chartreuse Green; or

CLARK'S BIG BALL MERCERIZED CROCHET, Art. B.34, Size 30: 1 ball each of No. 123-A Flamingo and No. 49 Chartreuse Green; or

CLARK'S O.N.T. BEST SIX CORD MERCERIZED CROCHET, Art. B.4, Size 30: 3 balls each of 2 colors of your own choice.

Milwards Steel Crochet Hook No. 10.

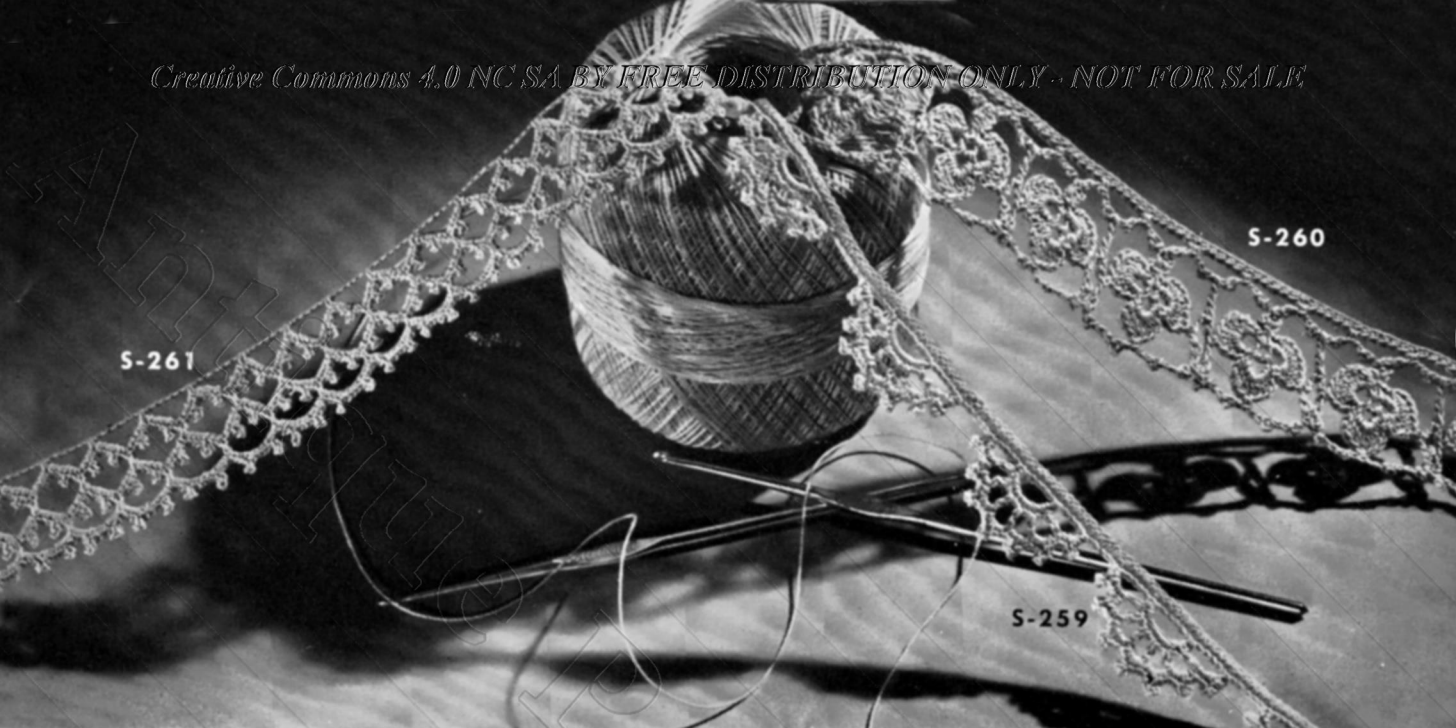
A hairpin staple,  $\frac{5}{8}$  inch wide.

A yellow organdy apron.

With Chartreuse Green make a strip of hairpin lace slightly longer than outer edge of apron (3 inches of hairpin lace for every 2 inches of apron).

**HEADING . . . 1st row:** Keeping the twist in all loops, attach Flamingo through first 5 loops, sc in same place, \* (ch 3, sc in next loop) 10 times; ch 3, sc through next 10 loops. Repeat from \* across, until piece is long enough to reach around apron, ending with sc through last 5 loops. Cut off any remaining hairpin lace. Ch 1, turn. **2nd row:** Sc in first loop, \* ch 7, holding back on hook the last loop of each tr make tr in each of next 3 loops, thread over and draw through all loops on hook (joint-tr made), (ch 5, sc in next loop) 3 times; ch 5, make a joint-tr over next 3 loops, ch 7, sc in each of next 2 loops. Repeat from \* across. Break off. **3rd row:** Attach Chartreuse to first loop, ch 9, \* (sc in next loop, ch 4) 4 times; holding back on hook the last loop of each d tr, make d tr in next 2 loops, thread over and draw through all loops on hook (joint d tr made), ch 4. Repeat from \* across. Break off.

**SCALLOPED EDGE . . . 1st row:** Still keeping the twist in all loops, attach Flamingo to first loop on opposite side of hairpin lace, sc in same place, (ch 3, sc in next loop) 4 times; \* ch 3, sc through next 10 loops, (ch 3, sc in next loop) 10 times. Repeat from \* across. Ch 1, turn. **2nd row:** Sl st in first loop, ch 9, dc in 6th ch from hook, (tr in next loop, ch 5, dc in top of last tr made) 3 times; \* make a joint-tr over next 2 loops, ch 5, dc in top of joint-tr, (tr in next loop, ch 5, dc in top of last tr made) 9 times. Repeat from \* across. Break off. Sew Edging around apron. Starch lightly and press.



S-261

S-260

S-259

## Braid Edging on Runner **S-258**

### MATERIALS:

J. & P. COATS BEST SIX CORD MERCERIZED CROCHET, Art. A.104, Size 30: 1 ball each of White and No. 181 Shaded Lt. Yellows.

Milwards Steel Crochet Hook No. 10. A piece of aqua linen, 12 x 42 inches.

**EDGING—Braid . . .** Starting at narrow end with Shaded Lt. Yellows, ch 8. **1st row:** In 8th ch from hook make dc, ch 2 and dc. Ch 7, turn. **2nd row:** In ch-2 sp make dc, ch 2 and dc. Ch 7, turn. Repeat 2nd row until there are 540 loops on each side of Braid. Break off. Sew narrow ends together, being careful not to twist.

**SCALLOPED EDGE . . . 1st rnd:** Attach White to any loop, sc in same loop, \* sc in next 4 loops, (ch 5, sc in next loop) 6 times. Repeat from \* around, ending with ch 2, dc in first sc. **2nd rnd:** Ch 4, holding back on hook the last loop of each tr make 2 tr in same loop, thread over and draw through all loops on hook (cluster made), make a 3-tr cluster in next loop, \* ch 5, in each of next 2 loops make (cluster, ch 5) twice; cluster in next loop, ch 5, cluster in next 2 loops. Repeat from \* around. Join and break off.

**HEADING . . . 1st rnd:** Attach White to loop opposite first sc of any sc group, sc in same place, (ch 5, sc in next loop) 5 times; \* sc in next 4 loops, (ch 5, sc in next loop) 6 times. Repeat from \* around, ending with ch 2, dc in first sc. **2nd rnd:** Ch 5, 2-d tr cluster in same loop, \* ch 7, (sc in next loop, ch 5) 3 times; sc in next loop, ch 7, 3-d tr cluster in each of next 2 loops. Repeat from \* around. Join. **3rd rnd:** Sl st to center of next loop, ch 4, 2-tr cluster in same loop, ch 5, dc in next loop, ch 5, sc in next loop, ch 5, dc in next loop, ch 5, holding back on hook the last loop of each dc make dc in next 7 loops, thread over and draw through all loops on

hook (joint cluster made for corner), \* ch 5, dc in next loop, ch 5, sc in next loop, ch 5, dc in next loop, (ch 5, cluster in next loop) twice. Repeat from \* 17 more times; ch 5, dc in next loop, ch 5, sc in next loop, ch 5, dc in next loop, ch 5, joint-dc cluster over next 7 loops (another corner), \*\* ch 5, dc in next loop, ch 5, sc in next loop, ch 5, dc in next loop, (ch 5, cluster in next loop) twice. Repeat from \*\* 4 more times; ch 5, dc in next loop, ch 5, sc in next loop, ch 5, dc in next loop, ch 5, joint-dc cluster over next 7 loops. Complete other sides and corner as before. Join and break off.

Pin Edging in place on linen, trace around inner edge and cut away excess material, leaving ¼ inch for hem. Sew hem and Edging neatly in place.

## Irish Crochet Edging **S-259**

Starting at long side make a chain slightly longer than length desired. **1st row:** Working over 6 strands of thread on foundation chain only, sc in 2nd ch from hook, sc in next 11 ch, \* ch 6, turn; skip 5 sc, sl st in next sc, turn; 13 sc in loop, sc in next 5 ch on foundation chain, ch 2, turn; (skip 1 sc of 13 sc in loop, dc in next sc, ch 2) 6 times; skip 5 sc on foundation chain, sl st in next sc, turn; in each sp across scallop make 2 sc, ch 3, sc in 3rd ch from hook (picot made) and 2 sc; sc in next 17 ch on foundation chain. Repeat from \* across until piece is length desired, ending with 2 sc, picot and 2 sc in last sp on scallop, sc in next ch on foundation chain. Break off.

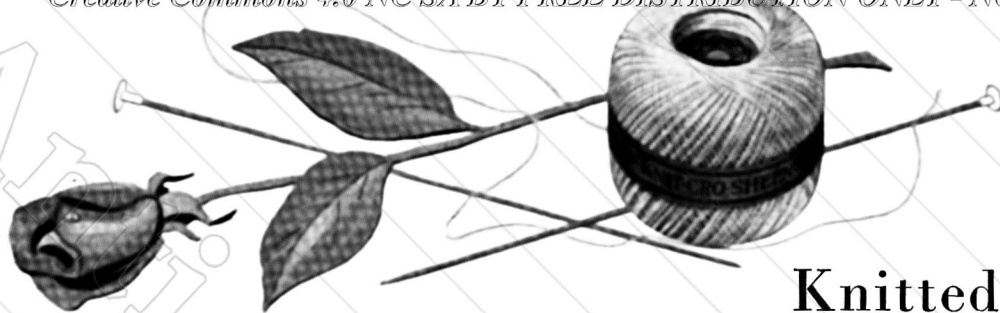
## Irish Crochet Edging **S-260**

With Bright Nile Green make a chain slightly longer than length desired. **1st row:** Sc in 2nd ch from hook and in each ch across until row measures length desired. Break off. **2nd row:** Attach thread to first sc, sc in same place, \* (ch 4, sl st in 3rd ch from

hook—picot made) twice; ch 1, skip 5 sc, sc in next sc, (ch 1, picot) twice; ch 7, sl st in 6th ch from hook (this ch-6 loop is center loop of shamrock), turn; (ch 5, sc in center loop) 3 times; turn, in each of the last three ch-5 loops make sc, 9 dc and sc; sc in ch-6 loop at center of shamrock, ch 1, picot, sl st between the first and second picots, make another picot, ch 1, skip next 5 sc, sc in next sc. Repeat from \* across, ending with a 2-picot loop. Break off. **3rd row:** Attach thread to first loop, ch 6, sc in 7th dc of first petal on next shamrock, (ch 1, picot) 3 times; \* ch 1, sc in center dc of next petal, (ch 1, picot) 3 times; sc in 3rd dc on next petal, ch 2, tr in next loop, ch 2, sc in 7th dc on first petal of next shamrock, ch 1, picot, ch 1, sl st between first and second picots of corresponding picot-chain, turn, (ch 1, picot) twice. Repeat from \* across, ending with ch 2, tr in last loop. Break off.

## Irish Crochet Edging **S-261**

With Blue make a chain slightly longer than length desired. **1st row:** Sc in 2nd ch from hook, \* ch 7, skip 5 ch, sc in next ch. Repeat from \* across until row is length desired. Cut off remaining chain. Ch 1, turn. **2nd row:** In each loop across make 3 sc, ch 3, sc in 3rd ch from hook (picot made), 5 sc, picot and 3 sc. Ch 10, turn. **3rd row:** \* Sc in center sc on next loop, ch 7. Repeat from \* across, ending with ch 5, d tr in last sc. Ch 1, turn. **4th row:** In first loop make 3 sc, picot and 3 sc, in each loop across make 3 sc, picot, 5 sc, picot and 3 sc; in last loop make 3 sc, picot and 3 sc. Ch 7, turn. **5th row:** Skip first loop, \* sc in center sc of next loop, ch 7. Repeat from \* across, ending with sc in last sc. Ch 1, turn. **6th row:** Repeat 2nd row. Break off.



## Knitted Edgings

Use J. & P. Coats "Knit-Cro-Sheen" with Clark's O.N.T. Plastic Knitting Pins No. 1 (2 mm. size); or J. & P. Coats or Clark's O.N.T. Pearl Cotton, Size 5, with Milwards "Phantom" Aluminum Knitting Pins No. 1 (2 mm. size).

### Knitted Edging on Luncheon Set S-270

#### MATERIALS:

J. & P. COATS "KNIT-CRO-SHEEN,"  
Art. A.64: 1 ball of No. 65 Beauty Pink.

Milwards "Phantom" Aluminum Knitting Pins, 1 pair No. 0 (2 mm. size).

Milwards Steel Crochet Hook No. 7.  
1/2 yard pink linen.

Centerpiece measures 16 3/4 inches in diameter; Place Mat measures 12 1/2 inches in diameter.

**CENTERPIECE—Edging . . .** Cast on 7 sts. **1st row:** K 1, O, k 2 tog, p 1, O, k 1, O, p 1, O, k 1. **2nd row:** P 2, k 1, p 3, k 1, p 1, O, k 2 tog. **3rd row:** K 1, O, k 2 tog, p 1, (k 1, O) twice; k 1, p 1, O, k 2 tog. **4th row:** P 2, k 1, p 5, k 1, p 1, O, k 2 tog. **5th row:** K 1, O, k 2 tog, p 1, k 2, O, k 1, O, k 2, p 1, O, k 2 tog. **6th row:** P 2, k 1, p 7, k 1, p 1, O, k 2 tog. **7th row:** K 1, O, k 2 tog, p 1, k 3, O, k 1, O, k 3, p 1, O, k 2 tog. **8th row:** P 2, k 1, p 9, k 1, p 1, O, k 2 tog. **9th row:** K 1, O, k 2 tog, p 1, k 3, k 3 tog, k 3, p 1, O, k 2 tog. **10th row:** Repeat 6th row. **11th row:** K 1, O, k 2 tog, p 1, k 2, k 3 tog, k 2, p 1, O, k 2 tog. **12th row:** Repeat 4th row. **13th row:** K 1, O, k 2 tog, p 1, k 1, k 3 tog, k 1, p 1, O, k 2 tog. **14th row:** Repeat 2nd row. **15th row:** K 1, O, k 2 tog, p 1, k 3 tog, p 1, O, k 2 tog. **16th row:** P 2, (k 1, p 1) twice; O, k 2 tog. **17th row:** K 1, O, k 2 tog, p 1, O, k 1, O, p 1, O, k 2 tog. **18th row:** Repeat 2nd row. Repeat 3rd to 18th rows incl until piece measures 51 inches. Break off.

Sew narrow ends together. Attach thread to any st on straight edge, sc in each st around. Join and break off. Pin Edging in place on linen to form circle. Cut out material in back of Edging, leaving 1/8 inch for hem. Sew hem and Edging neatly in place.

**PLACE MAT . . .** Make a piece of Edging 35 inches long. Complete as for Centerpiece.

### Knitted Edging S-262

Cast on 6 sts. **1st row:** K 2, O, k 2 tog, k 1, O, k 1. **2nd and all even rows:** P across to last st, k 1. **3rd row:** K 3, k 2 tog, (O, k 1) twice. **5th row:** K 1, O, sl 1, k 2 tog, p.s.s.o., O, k 3, O, k 1. **7th row:** K 2, O, sl 1, k 1, p.s.s.o., k 1, O, k 2 tog, k 1, O, k 1. **9th row:** K 2 tog, O, k 1, O, sl 1, k 1, p.s.s.o., k 1, k 2 tog, O, k 2 tog. **11th row:** K 4, O, sl 1, k 2 tog, p.s.s.o., O, k 2 tog. **13th row:** K 2, O, k 2 tog, k 1, O, sl 1, k 2 tog, p.s.s.o. Repeat 3rd to 14th rows incl for length desired.

### Knitted Edging S-263

Cast on 8 sts. **1st row:** Sl 1, p 2, k 2, O, sl 1, k 1, p.s.s.o., O, k 1. **2nd row:** Sl 1, p across to last 3 sts, k 3. **3rd row:** Sl 1, p 2, k 3, O, sl 1, k 1, p.s.s.o., O, k 1. **4th row:** Repeat 2nd row. **5th row:** Sl 1, p 2, k 4, O, sl 1, k 1, p.s.s.o., O, k 1. **6th row:** Repeat 2nd row. **7th row:** Sl 1, p 2, k 1, in next st make (k 1, p 1) 3 times; k 3, O, sl 1, k 1, p.s.s.o., O, k 1. **8th row:** Sl 1, p 6, p 6 tog, p 1, k 3. **9th row:** Sl 1, p 2, k 3, (k 2 tog, O) twice; k 2 tog. **10th row:** Repeat 2nd row. **11th row:** Sl 1, p 2, k 2, (k 2 tog, O) twice; k 2 tog. **12th row:** Repeat 2nd row. **13th row:** Sl 1, p 2, k 1, (k 2 tog, O) twice; k 2 tog. **14th row:** Repeat 2nd row. **15th row:** Sl 1, p 2, (k 2 tog, O) twice; k 2 tog. **16th row:** Repeat 2nd row. Repeat first to 16th rows incl for length desired.

### Knitted Edging S-264

Cast on 11 sts. **1st row:** K 1, sl 1, k 1, p.s.s.o., O, k 3, k 2 tog, k 1, O, k 2. **2nd and all even rows:** Sl 1, p across to last 4 sts, p 2 tog, O, k 2. **3rd row:** K 1, sl 1, k 1, p.s.s.o., O, k 2, k 2 tog, (k 1, O) twice; k 2. **5th row:** K 1, sl 1, k 1, p.s.s.o., O, k 4, O, k 3, O, k 2. **7th row:** K 1, sl 1, k 1, p.s.s.o., O, k 6, k 2 tog, k 1, O, k 2. **9th row:** K 1, sl 1, k 1, p.s.s.o., O, k 5, k 2 tog, (k 1, O) twice; k 2. **11th row:** K 1, sl 1, k 1, p.s.s.o., O, k 4, k 2 tog, k 1, O, k 3, O, k 2. **12th row:** Bind off 5 sts, p across to last 4 sts, p 2 tog, O, k 2. Repeat first to 12th rows incl for length desired.

### Knitted Edging S-265

Cast on 10 sts. **1st row:** Sl 1, k 2 tog, O, k 6, O, k 1. **2nd and all even rows:** Sl 1, p across to last st, k 1. **3rd row:** Sl 1, k 2 tog, O, k 6, (O, k 1) twice. **5th row:** Sl 1, k 2 tog, O, slip next 3 sts onto a spare needle and place in front of work, k next 3 sts, k the 3 sts from spare needle, O, sl 1, k 3 tog, p.s.s.o. **7th row:** Sl 1, k 2 tog, O, k 6, O, k 2 tog. **8th row:** Repeat 2nd row. Repeat 3rd to 8th rows incl for length desired.

### Knitted Edging S-266

Cast on 8 sts. **1st row:** Sl 1, k 1, O, k 2 tog, k 1, O, k 3, insert left hand needle into the first of the 3 sts just knitted and pass it over the last 2 sts. **2nd row:** P across to last 3 sts, O, p 2 tog, k 1. **3rd row:** Sl 1, k 1, O, k 2 tog, k 3, insert left hand needle into the first of the 3 sts just knitted and pass it over the last 2 sts, O, k 1. **4th row:** Repeat 2nd row. Repeat first to 4th rows incl for length desired.

### Knitted Edging S-267

Cast on 5 sts. **1st row:** K 2, O, k 2 tog, O, k 1. **2nd row:** P 3, O, k 2 tog, k 1. **3rd row:** K 2, O, k 2 tog, (O, k 1) twice. **4th row:** P 5, O, k 2 tog, k 1. **5th row:** K 2, O, k 2 tog, O, sl 1, k 2 tog, p.s.s.o., O, k 1. **6th row:** Repeat 4th row. **7th row:** K 2, O, k 2 tog, sl 1, k 3 tog, p.s.s.o. **8th row:** P 2, O, k 2 tog, k 1. Repeat 1st to 8th rows incl for length desired.

### Knitted Edging S-268

Cast on 5 sts. **1st row:** K 2, O, sl 1, k 1, p.s.s.o., O, k 1. **2nd row:** P 3, O, p 2 tog, k 1. **3rd row:** K 2, O, sl 1, k 1, p.s.s.o., O, k 2. **4th row:** Bind off 2 sts, p 1, O, p 2 tog, k 1. Repeat first to 4th rows incl for length desired.

### Knitted Edging S-269

Cast on 5 sts. **1st row:** K 1, O, k 2, p 1, k 1. **2nd and all even rows:** K 2, p across to last st, k 1. **3rd row:** K 1, O, k 3, p 1, k 1. **5th row:** K 1, O, k 2 tog, O, k 2, p 1, k 1. **7th row:** Bind off 3 sts, k 2, p 1, k 1. **8th row:** Repeat 2nd row. Repeat first to 8th rows incl for length desired.



S-270

S-269

S-263

S-266

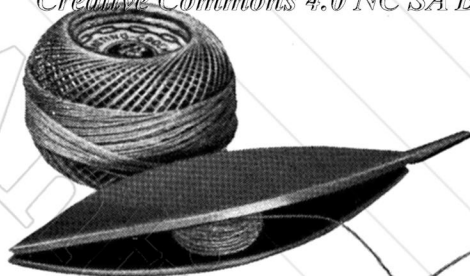
S-262

S-265

S-264

S-267

S-268



# Tatted Edgings

Use J. & P. Coats Tatting-Crochet,  
Size 70, with a tatting shuttle.

## Tatted Handkerchief Edging S-271

### MATERIALS:

J. & P. COATS TATTING-CROCHET,  
Art. A.21, Size 70: 1 ball of No. 18  
Shaded Lavenders.

1 handkerchief, 12 inches square.

Tie ball and shuttle threads together. Lr of (2 ds, p) 10 times; 2 ds, cl. \* (Rw, ch of 2 ds, 3 p's sep by 2 ds, 2 ds. Rw, sm r of 2 ds, join to last p of preceding r, 2 ds, join to next p of same r, 3 p's sep by 2 ds, 2 ds, cl) twice. Rw, ch of 2 ds, 3 p's sep by 2 ds, 2 ds. Rw, lr of 2 ds, join to last p of sm r, 2 ds, join to next p of same r, (2 ds, p) 8 times; 2 ds, cl. Repeat from \* for length desired, allowing 1 inch extra for each corner. Tie and cut. Whip edging on handkerchief.

## Tatted Handkerchief Edging S-272

### MATERIALS:

J. & P. COATS TATTING-CROCHET,  
Art. A.21, Size 70: 1 ball of No. 15-B Shaded Bright Reds.

1 handkerchief, 12 inches square.

Tie ball and shuttle threads together. Sm r of 2 ds, 2 p's sep by 1 ds, 2 ds, 2 p's sep by 1 ds, 2 ds, cl. \* Rw, ch of 3 ds, 3 p's sep by 1 ds, 3 ds. Rw, r of 2 ds, join to last p of sm r, 1 ds, join to next p of same r, 1 ds, 5 p's sep by 1 ds, 2 ds, cl. Rw, ch of 3 ds, 3 p's sep by 1 ds, 3 ds. Rw, sm r of 2 ds, join to last p of preceding r, 1 ds, join to next p of same r, 2 ds, 2 p's sep by 1 ds, 2 ds, cl. Repeat from \* for length desired, allowing 1 inch extra for each corner. Tie and cut. Whip edging on handkerchief.

## Tatted Edging S-273

Tie ball and shuttle threads together. R of (2 ds, p) 3 times; 2 ds, cl. Rw, ch of 5 ds. Rw, r of (2 ds, p) 3 times; 2 ds, cl. \* Rw, ch of 2 ds, 2 p's sep by 1 ds, 2 ds. Rw, r of 2 ds, join to last p of preceding r, (2 ds, p) twice; 2 ds, cl. Rw, ch of 5 ds. Rw, r of (2 ds, p) 3 times; 2 ds, cl. Rw, ch of 5 ds. Rw, r of 2 ds, join to last p of adjacent r, (2 ds, p) twice; 2 ds, cl. Repeat from \* for length desired. Tie and cut.

## Tatted Edging S-274

R of 3 ds, p, \* (3 ds, p) twice; 3 ds, cl. Sp of 1/4 inch. R of 3 ds, join to last p of previous ring. Repeat from \* for length desired. Tie and cut.

## Tatted Edging S-275

R of 5 ds, 3 p's sep by 5 ds, cl. Rw, r of 2 ds, sm p, 5 ds, p, 5 ds, sm p, 2 ds, half cl (draw half way up to form a half r). Rw, r of 5 ds, join to last p of first r, \* (5 ds, p) twice; 5 ds, cl. Rw, r of 2 ds, join to last sm p of previous half r, 5 ds, p, 5 ds, sm p, 2 ds, half cl. Rw, r of 5 ds, join to last p of previous r. Repeat from \* for length desired. Tie and cut.

## Tatted Edging S-276

**FIRST MOTIF . . .** Center r of 2 ds, 8 p's sep by 2 ds, 2 ds, cl. Lr of 2 ds, p, (6 ds, p) twice; 2 ds, cl. Join to first p of center r. \* Sm r of 2 ds, join to last p of lr, (4 ds, p) twice; 2 ds, cl. Join to next p of center r. Lr of 2 ds, join to last p of sm r, (6 ds, p) twice; 2 ds, cl. Join to next p. Repeat from \* 2 more times. Sm r of 2 ds, join to p of lr, 4 ds, p, 4 ds, join to first p of first lr, 2 ds, cl. Join to 8th p of center r. Tie and cut.

**SECOND MOTIF . . .** Make a center r same as before. Lr of 2 ds, p, 6 ds, join to p of any lr of First Motif, 6 ds, p, 2 ds, cl. Complete exactly the same as First Motif.

**THIRD MOTIF . . .** Make a center r same as before. Lr of 2 ds, p, 6 ds, join to p of 5th lr of Second Motif and complete as before. Continue for length desired. Tie and cut.

## Tatted Edging S-277

Tie ball and shuttle threads together. \* R of 4 ds, 5 p's sep by 4 ds, 4 ds, cl. Rw, ch of 6 ds, 3 p's sep by 4 ds, 6 ds. Rw, r of 4 ds, p, 4 ds, join to 4th p of previous r, 4 ds, 3 p's sep by 4 ds, 4 ds, cl. Rw and repeat from \* for length desired. Tie and cut.

## Tatted Edging S-278

Tie ball and shuttle threads together. R of 4 ds, p, 4 ds, lp, 8 ds, cl. Rw, ch of 3 ds, 3 p's sep by 3 ds, 3 ds. \* (Rw, r of 8 ds, join to lp of first r, 8 ds, cl. Rw, ch same as before) twice. Rw, r of 8 ds, join to lp, 4 ds, p, 4 ds, cl.

Reversing curve of ch, ch of 3 ds, 3 p's sep by 3 ds, 3 ds. R of 4 ds, p, 4 ds, lp, 8 ds, cl. Rw, ch of 3 ds, p, 3 ds, join to center p of next-to-last ch, 3 ds, p, 3 ds. Repeat from \* for length desired. Tie and cut.

## Tatted Edging S-279

Tie ball and shuttle threads together. R of 8 ds, lp, 8 ds, cl. (Rw, ch of 3 ds, 3 p's sep by 3 ds, 3 ds. Rw, r of 8 ds, join to lp, 8 ds, cl) 5 times. \* Reversing curve of ch, ch of 3 ds, 5 p's sep by 3 ds, 3 ds. Rw, r of 4 ds, join to center p of last 3-p ch, (4 ds, p) twice; 4 ds, cl. Rw, ch of 3 ds, 5 p's sep by 3 ds, 3 ds. R of 8 ds, lp, 8 ds, cl. Rw, ch of 3 ds, p, 3 ds, join to last p of previous 3-p r, 3 ds, p, 3 ds. Rw, r of 8 ds, join to lp, 8 ds, cl. (Rw, ch of 3 ds, 3 p's sep by 3 ds, 3 ds. Rw, r of 8 ds, join to lp, 8 ds, cl) 4 times. Repeat from \* for length desired. Tie and cut.

## Tatted Edging S-280

Tie ball and shuttle threads together.

**FIRST MOTIF . . .** R of 4 ds, 3 p's sep by 4 ds, 4 ds, cl. Rw, ch of 6 ds, p, 6 ds. Rw, r of 4 ds, join to last p of previous r, 4 ds, 2 p's sep by 4 ds, 4 ds, cl. Rw, ch of 6 ds. Rw, lr of 8 ds, join to last p of previous r, 8 ds, 2 p's sep by 8 ds, 8 ds, cl. Center lr of 8 ds, join to last p of previous lr, 10 ds, 3 p's sep by 2 ds, 10 ds, p, 8 ds, cl. Lr of 8 ds, join to last p of center lr, 8 ds, 2 p's sep by 8 ds, 8 ds, cl. Rw, ch of 6 ds. Rw, r of 4 ds, join to last p of previous lr, 4 ds, 2 p's sep by 4 ds, 4 ds, cl. Rw, ch of 6 ds, join to p of first ch, 6 ds. Rw, r of 4 ds, join to last p of previous r, 4 ds, 2 p's sep by 4 ds, 4 ds, cl. Reversing curve of ch, ch of 6 ds, p, 6 ds. Attach at base of first ring. Tie and cut.

**SECOND MOTIF . . .** Make exactly the same as for First Motif until center lr has been completed. Lr of 8 ds, join to last p of center lr of Second Motif, 8 ds, join to center p of lr of First Motif, 8 ds, p, 8 ds, cl. Rw, ch of 6 ds. Rw, r of 4 ds, join to free p of previous lr, 4 ds, join to p of 3-p r of First Motif, 4 ds, p, 4 ds, cl. Rw, ch of 6 ds, join to p of corresponding ch, 6 ds. Rw, r of 4 ds, join to last p of previous r, 4 ds, join to p of next r of First Motif, 4 ds, p, 4 ds, cl. Complete as for First Motif. Make as many motifs as desired.





S-275

S-280

S-271

S-277

S-279

S-273

S-272

S-276

S-274

S-278



S-282

S-281

## Baby and Lingerie Edgings

Use J. & P. Coats or Clark's O.N.T. Best Six Cord Mercerized Crochet, Size 50, with Milwards Steel Crochet Hook No. 12; or Size 100 with a No. 15 hook; or J. & P. Coats Tatting-Crochet, Size 70, with a No. 13 hook.

### Baby Slip Edging S-281

#### MATERIALS:

CLARK'S O.N.T. BEST SIX CORD MERCERIZED CROCHET, Art. B.4, Size 100: 1 ball of White.

Milwards Steel Crochet Hook No. 15.

A baby petticoat.

Starting at long side, make a chain slightly longer than lower edge of slip. Holding back on hook the last loop of each dc make 2 dc in 5th ch from hook, thread over and draw through all loops on hook (cluster made); ch 3, sc in tip of dc cluster (picot made), \* ch 3, skip 1 ch, sc in next ch, ch 3, skip 1 ch, cluster in next ch, picot. Repeat from \* across, ending with sc. Break off.

Sew narrow ends together. Sew to bottom of slip. Make another piece to reach around neck and armhole openings. Sew in place.

### Baby Dress Edging S-282

#### MATERIALS:

CLARK'S O.N.T. BEST SIX CORD MERCERIZED CROCHET, Art. B.4, Size 100: 1 ball of White.

Milwards Steel Crochet Hook No. 15.

A baby dress.

Starting at narrow end, ch 6, dc in 5th ch from hook, \* ch 3, dc in top of dc, ch 5, dc in top of dc. Repeat from \* until piece reaches around bottom of dress, ending with a ch-5 loop. Turn. Now work across long side as follows: Sc in tip of dc, ch 3, \* sc in ch-5 loop, in next loop make tr, ch 5 and tr. Repeat from \* across. Break off.

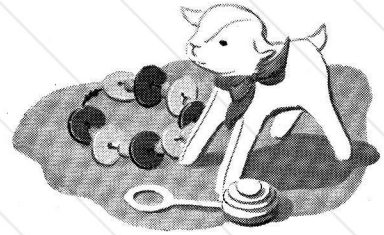
Sew narrow ends together. Sew to hem of dress. Make a piece for neck of dress and a piece for each sleeve. Sew in place.

### Edging S-283

Starting at narrow end, ch 6, \* dc in 6th ch from hook, ch 8. Repeat from \* until piece is slightly longer than length desired. Ch 3, turn. Now work across long side as follows: In each loop across make \* (dc, ch 3, sc in top of last dc made—picot made) 3 times and dc. Repeat from \* across. Break off.

### Edging S-284

Starting at narrow end, ch 8. **1st row:** In 7th ch from hook make dc, ch 1 and dc. Ch 4, turn. **2nd row:** Dc in ch-1 sp. Ch 7, turn. **3rd row:** In ch-1 sp make dc, ch 1 and dc. Ch 4, turn. Repeat 2nd and 3rd rows until piece is slightly longer than length desired. Turn. Now work across long side as follows: \* In next loop make (2 sc, ch 3) 3 times and 2 sc; sc in side of next dc. Repeat from \* across. Break off.



**Edging**

**S-285**

Starting at long side make a chain slightly longer than length desired. **1st row:** Sc in 6th ch from hook, \* ch 3, skip 2 ch, sc in next ch. Repeat from \* across, ending with ch 1, dc in last ch, having number of loops divisible by 3 and 2 more loops. Ch 3, turn. **2nd row:** \* Sc in next loop, ch 3. Repeat from \* across, ending with ch 1, dc in last loop. Ch 6, turn. **3rd row:** Sc in 4th ch from hook (picot made), \* ch 2, sc in next loop, ch 3, sc in next loop, ch 2, picot. Repeat from \* across. Break off.

**Edging**

**S-286**

Starting at narrow end, ch 6, tr in 5th ch from hook, \* ch 3, tr in last tr made, ch 5, tr in last tr made. Repeat from \* until piece is slightly longer than length desired, ending with ch-5 loop. Ch 3, turn.

**SCALLOPED EDGE . . .** Now work across long side as follows: Sc in first ch-5 loop, \* ch 3, sc in last sc made (picot made), ch 3, sc at base of tr, ch 5, sc at base of next tr, ch 3, sc in next loop. Repeat from \* across. Break off.

**HEADING . . .** Attach thread to first sp on opposite side, sc in same place, \* ch 7, skip 1 sp, sc in next sp. Repeat from \* across. Break off.

**Edging**

**S-287**

Starting at narrow end, ch 7, \* sc in 4th ch from hook, half dc in next ch, dc in next ch, tr in next ch, ch 9. Repeat from \* until piece is slightly longer than length desired. Ch 4, turn. Now work across long side as follows: \* In next point make sc, ch 3 and sc; ch 3, sc in sp between points, ch 3. Repeat from \* across, ending with ch 3, sc at base of last point. Now work heading as follows: Ch 5, \* dc over tr-bar of next point, ch 2, dc at base of next sc, ch 2. Repeat from \* across. Break off.

**Edging**

**S-288**

Starting at narrow end ch 6, dc in 6th ch from hook, \* ch 5, turn, dc in last dc made. Repeat from \* until piece is slightly longer than length desired. Ch 3, turn. Now work across long side as follows: \* In next ch-5 loop make (dc, ch 3, dc in top of last dc made) twice and dc; ch 2, sc in next loop, ch 2. Repeat from \* across. Break off.

**HEADING . . .** Attach thread to first ch-5 loop on opposite side, sc in same place, \* ch 3, sc in next loop. Repeat from \* across. Break off.

**Edging**

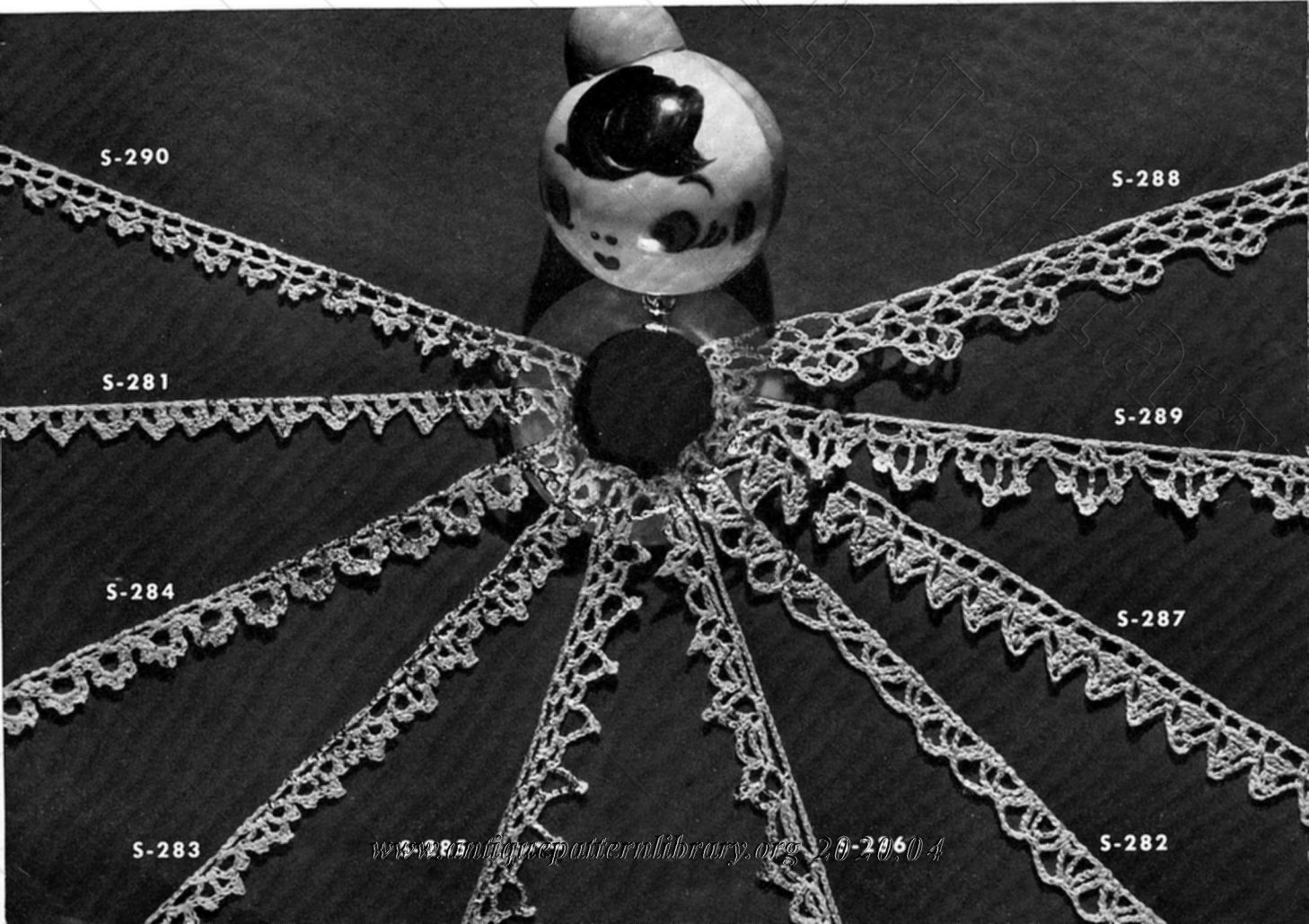
**S-289**

Starting at long side make a chain slightly longer than length desired. **1st row:** In 7th ch from hook make (dc, ch 1) twice and dc; \* ch 2, skip 3 ch, sc in next ch, ch 2, skip 3 ch, in next ch make (dc, ch 1) twice and dc. Repeat from \* across, ending with sc. Ch 1, turn. **2nd row:** Sc in next sp, \* ch 3, dc in next dc, ch 3, sc in top of last dc (picot made), ch 2, tr in next dc, picot, ch 2, dc in next dc, picot, ch 3, sc in next 2 sps. Repeat from \* across. Break off.

**Edging**

**S-290**

Starting at narrow end, ch 8. **1st row:** Dc in 8th ch from hook. Turn. **2nd row:** (Ch 3, sc in 3rd ch from hook—picot made) 3 times; dc in previous dc, ch 2, skip 2 ch, dc in next ch. Ch 5, turn. **3rd row:** Skip first dc, dc in next dc. Turn. Repeat 2nd and 3rd rows for length desired, ending with 2nd row. Break off.



S-290

S-288

S-281

S-289

S-284

S-287

S-283

S-282

# Rick-Rack Edgings

Use J. & P. Coats or Clark's O.N.T. Best Six Cord Mercerized Crochet, Size 20 or 30, with No. 13 Rick-Rack Braid and Milwards Steel Crochet Hook No. 9 or 10.

## Guest Towel Edging S-291

### MATERIALS:

J. & P. COATS TATTING-CROCHET, Art. A.21, Size 70: 1 ball of No. 76 China Blue.

Milwards Steel Crochet Hook No. 14.

A card of yellow rick-rack, Size 13.

A yellow guest towel.

Cut 2 strips of rick-rack, each 1 yard long.

**SCALLOPED EDGE . . .** Attach thread to first point on first strip of rick-rack, sc in same point, \* (ch 5, sc in next point) 6 times; skip 8 points on second strip, sc in next point, (ch 5, sc in next point) 6 times; skip 8 points on first strip, sc in next point. Repeat from \* for length desired, being careful not to twist rick-rack. Break off. Cut off any remaining rick-rack. Sew strips of rick-rack together at both ends.

**HEADING . . .** Attach thread to first point on opposite side. **1st row:** Ch 7, \* dc in next point, ch 3, half dc in next point, ch 3, sc in next point, ch 3, half dc in next point, ch 3, holding back on hook the last loop of each tr make tr in next point, skip 7 points on lower piece of rick-rack, tr in next point, thread over and draw through all loops on hook (joint-tr made), ch 3. Repeat from \* across, ending with tr. Ch 6, turn. **2nd row:** \* Dc in next dc, ch 3, dc in next half dc, ch 3, dc in next sc, ch 3, dc in next half dc, ch 3, dc in next dc, ch 3, dc in next joint-tr, ch 3. Repeat from \* across. Break off.

**FILL-IN-MOTIF . . .** Skip first free point on inner edge of first circle, attach thread to next point, ch 4, tr in next 5 points, skip 1 point on other piece of rick-rack, tr in next 6 points. Join and break off. Make a Fill-In-Motif in each circle across. Sew to edge of towel.

## Rick-Rack Edging on Guest Towel S-292

### MATERIALS:

J. & P. COATS TATTING-CROCHET, Art. A.21, Size 70: 1 ball each of White and No. 48 Hunter's Green.

Milwards Steel Crochet Hook No. 14.

A card of green rick-rack, Size 13.

A green guest towel.

**SCALLOPED EDGE . . .** Cut a strip of rick-rack same length as towel and attach White to tip of first point on rick-rack. **1st row:** Sc in same place,

\* ch 7, skip next point, in tip of next point make sc, ch 3 and sc. Repeat from \* across, ending with ch 7, sc in last point. Break off. **2nd row:** Attach White to first ch-7 loop, ch 4, in same loop make (dc, ch 1) 5 times and dc; \* in next loop make (dc, ch 1) 6 times and dc. Repeat from \* across. Break off. **3rd row:** Attach Hunter's Green to first ch-1 sp, sc in same place, \* (ch 3, sc in next sp) 5 times; sc in next sp. Repeat from \* across. Break off.

Cut another strip of rick-rack the same length as before. Attach White to tip of first point, \* ch 3, sc in tip of corresponding point on first strip, ch 3, sc in tip of next point on second strip. Repeat from \* across. Break off.

**HEADING . . .** Attach White to first point on free side of rick-rack, sc in same place, \* ch 3, sc in tip of next point. Repeat from \* across. Break off. Sew edging to towel.

## Rick-Rack Edging on Bath Towel S-293

### MATERIALS:

J. & P. COATS BEST SIX CORD MERCERIZED CROCHET, Art. A.104, Size 30: 1 ball each of White and No. 126 Spanish Red.

Milwards Steel Crochet Hook No. 10.

1 card each of white and red rick-rack, Size 29.

A green bath towel.

Braid red and white rick-rack the same length as towel. Cut off any remaining rick-rack.

**SCALLOPED EDGE . . .** Attach White to first red point on rick-rack. **1st row:** \* Ch 9, sc in next red point. Repeat from \* across. Ch 1, turn. **2nd row:** 13 sc in each loop across. Break off.

**HEADING . . . 1st row:** Attach White to first point on opposite side, ch 6, \* dc in next point, ch 3. Repeat from \* across. Break off. **2nd row:** Attach Spanish Red to 3rd ch of starting chain, ch 6, \* dc in next dc, ch 3. Repeat from \* across, ending with dc. Break off. Sew to edge of towel.

## Blue Rick-Rack Edging S-294

**SCALLOPED EDGE . . .** Attach thread to first point of rick-rack. **1st row:** Ch 6, dc in same place, \* in next point make dc, ch 3 and dc. Repeat from \* across, until piece measures length desired, having an uneven number of sps. Cut off any remaining rick-rack. Ch 1, turn. **2nd row:** Sc in first sp, \* ch 3, holding back on hook the last loop of each dc make 2 dc in next sp, thread over and draw through

all loops on hook (cluster made), ch 3, sl st in tip of cluster (picot made), ch 3, sc in next sp. Repeat from \* across. Break off.

**HEADING . . .** Attach thread to first point on opposite side of rick-rack, sc in same place, \* ch 3, sc in next point. Repeat from \* across. Break off.

## White and Yellow Rick-Rack Edging S-295

Braid white and yellow rick-rack together for length desired.

**SCALLOPED EDGE . . .** Attach Robinette to first point on rick-rack. **1st row:** Ch 5, holding back on hook the last loop of each tr, make tr in next 4 points, thread over and draw through all loops on hook (cluster made), \* ch 5, make a cluster in next 5 points. Repeat from \* across. Ch 4, turn. **2nd row:** In tip of first cluster make 2 tr, ch 5 and 3 tr; \* sc in next sp, in tip of next cluster make 3 tr, ch 5 and 3 tr. Repeat from \* across. Break off. **3rd row:** Attach Yellow to top of turning chain, sc in same place, sc in next 2 tr, \* in ch-5 loop make 2 sc, ch 3 and 2 sc; sc in next 3 tr, skip next sc, sc in next 3 tr. Repeat from \* across. Break off. **4th row:** Attach White to first sc, sc in next 5 sc, \* in ch-3 loop make sc, ch 3, sc, ch 5, sc, ch 3 and sc; sc in next 4 sc, work off next 2 sc as 1 sc, sc in next 4 sc. Repeat from \* across. Break off.

**HEADING . . .** Attach Robinette to first point on opposite side of rick-rack, ch 4, \* dc in next point, ch 1. Repeat from \* across, ending with dc. Break off.

## Yellow Rick-Rack Edging S-296

**SCALLOPED EDGE . . .** Attach thread to first point on rick-rack. **1st row:** \* (Ch 5, sc in next point) twice; ch 5, dc in next 5 points. Repeat from \* across for length desired, ending with (ch 5, sc in next point) twice; ch 5, sl st in next point. Break off. **2nd row:** Attach thread to first sp, ch 4, holding back on hook the last loop of each tr make 2 tr in same sp, thread over and draw through all loops on hook (cluster made), \* ch 5, in next loop make (3-tr cluster, ch 5) twice; 3-tr cluster in next loop, ch 5, make a dc cluster by making dc in next 5 dc, ch 5, 3-tr cluster in next loop. Repeat from \* across. Break off.

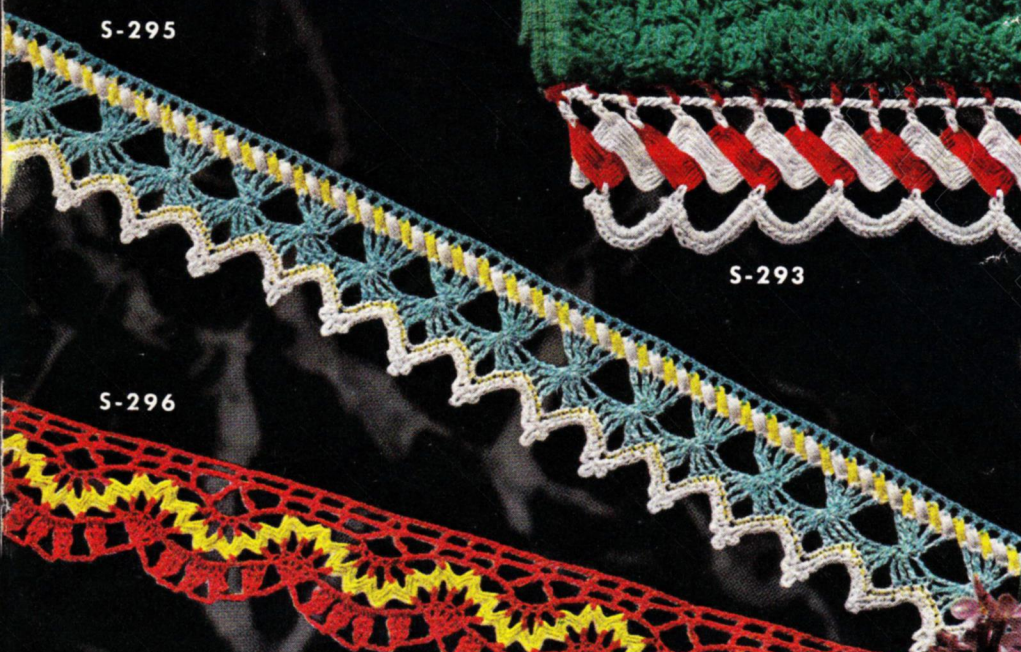
**HEADING . . .** Attach thread to first point on opposite side of rick-rack.  
*Continued on page 15*



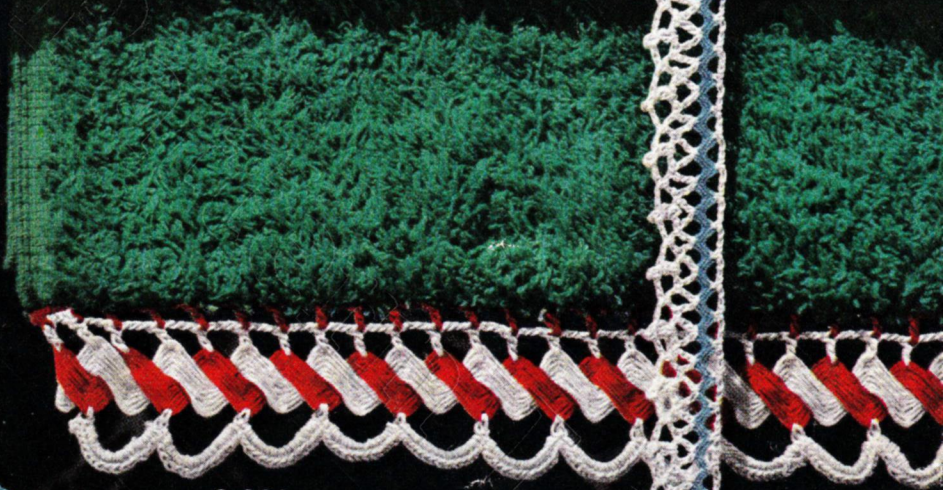
S-291



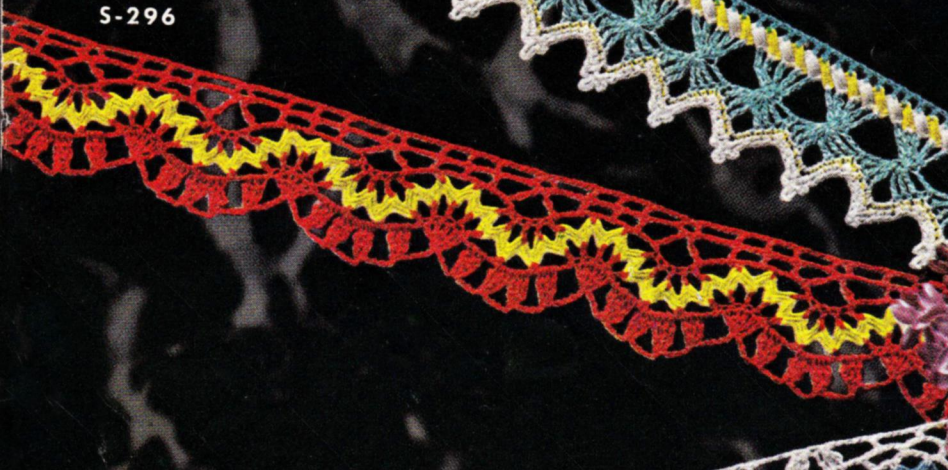
S-292



S-295



S-293



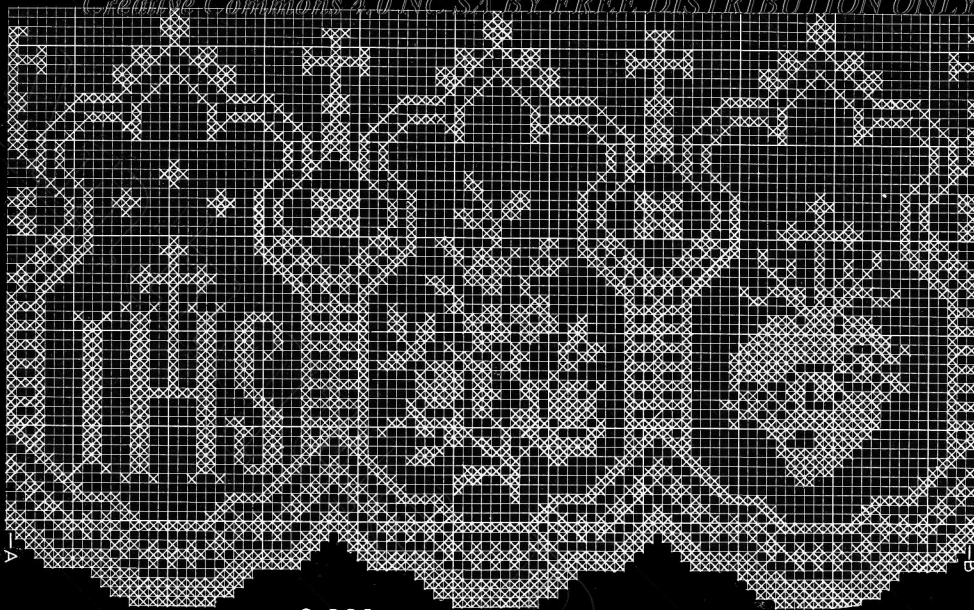
S-296



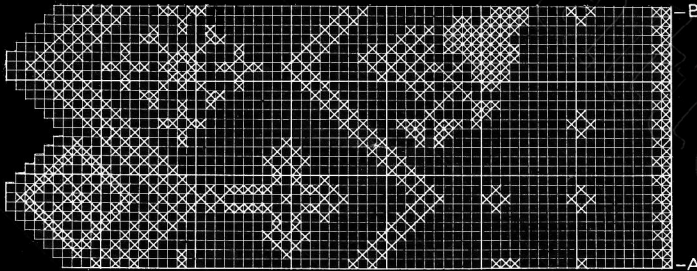
S-294



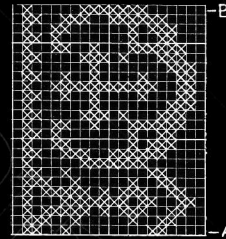
S-297 . . . Page 15



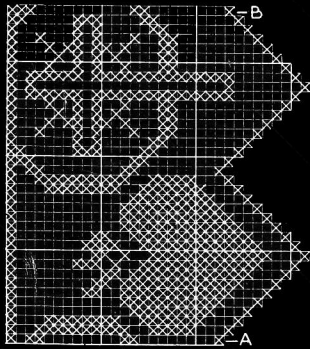
S-301



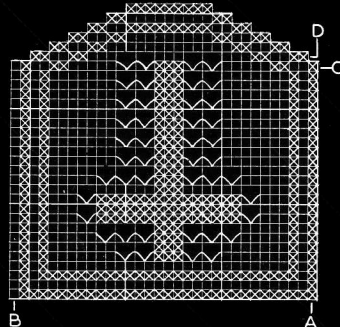
S-302



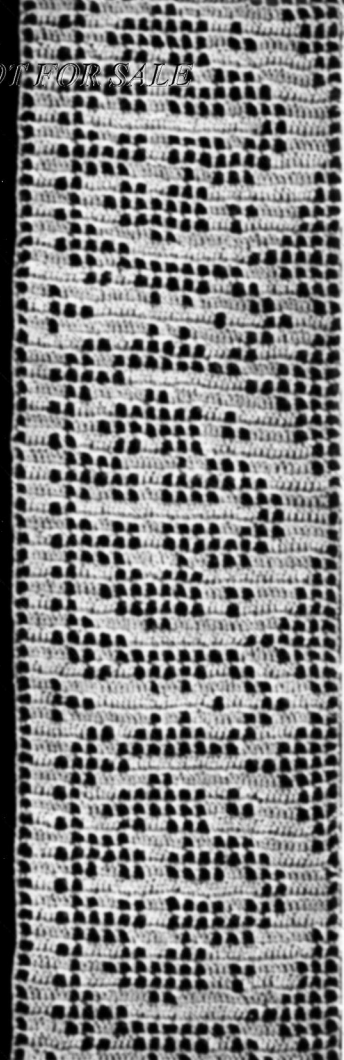
S-298



S-299



S-300



## Church Laces

Use J. & P. Coats or Clark's O.N.T. Best Six Cord Mercerized Crochet (Sizes 10-60); or Clark's O.N.T. Big Ball Mercerized Crochet (Sizes 10-50)

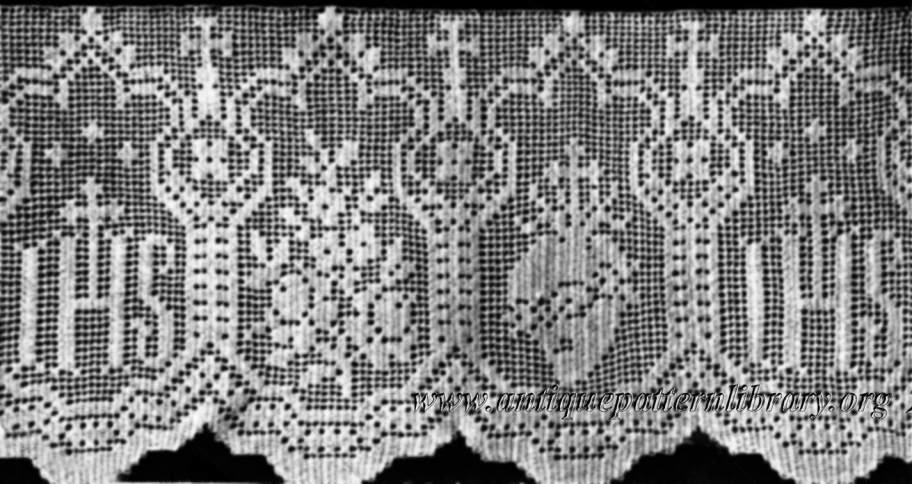
Hook	Thread	Gauge
No. 8	Size 10	4 sps and 4 rows—1 inch
No. 9	Size 20	4 1/2 sps and 4 1/2 rows—1 inch
No. 10	Size 30	5 sps and 5 rows—1 inch
No. 12	Size 50	6 sps and 6 rows—1 inch
No. 13	Size 60	7 sps and 7 rows—1 inch

### Alb Lace

### S-298

Starting at "A" on chart, ch 65. **1st row:** Dc in 8th ch from hook (sp made), ch 2, skip next 2 ch, dc in next ch (another sp made), make 2 more sps, dc in next 3 ch (bl made), make another bl, 8 sps, 1 bl, 2 sps, 2 bls and 1 sp. Ch 5, turn. **2nd row:** Skip first dc, dc in next dc (sp made over sp), dc in next 3 dc (bl made over bl), make another bl, 2 dc in next sp, dc in next dc (bl made over sp), ch 2, dc in next dc (another sp made over sp), ch 2, skip next 2 dc, dc in next dc (sp made over bl), make 1 bl, 5 sps, 1 bl, 2 sps, 2 bls and 2 sps, ch 2, dc in 3rd ch of ch-5. Ch 5, turn.

Starting with 3rd row, follow chart to "B." Repeat chart from "A" to "B" for length desired, ending with 7th row on chart. Break off.



**Alb Lace S-299**

Starting at "A" on chart, ch 71. **1st row:** Dc in 4th ch from hook and in next 2 ch (bl made), ch 2, skip 2 ch, dc in next ch (sp made), make 7 more sps, dc in next 3 ch (another bl made), make another bl, 8 sps, 2 bls, 1 sp and 1 bl. Ch 3, turn. **2nd row:** Skip first dc, dc in next 3 dc (bl made over bl), ch 2, dc in next dc (sp made over sp), ch 2, skip next 2 dc, dc in next dc (sp made over bl), make 1 bl, 2 dc in next sp, dc in next dc (bl made over sp), make 8 more bls, 2 sps, 5 bls and 2 sps, ch 2, dc in top of turning chain, (thread over, insert hook at base of last dc made, draw loop through, thread over and draw through 1 loop for foundation chain, then thread over and complete a dc—foundation dc made) 3 times. Ch 5, turn (1 bl increased at end of row). **3rd row:** Dc in 4th ch from hook and in next ch, dc in next dc (1 bl increased at beginning of row), make 3 sps, 7 bls, 2 sps, 8 bls and 3 sps, dc in next 2 dc and in top of turning chain. Ch 3, turn. Follow chart until 10 rows have been completed. Do not chain at end of last row. Turn. **11th row:** Sl st in first 4 dc, ch 3 and follow chart across. Ch 3, turn (1 bl decreased at beginning of row). Follow chart to "B," then repeat chart from "A" to "B" for length desired, ending with 19th row. Break off.

**Alb Lace S-300**

Starting at "A" on chart and working across long side, make a chain slightly longer than length desired. **1st row:** Dc in 4th ch from hook and in next 92 ch (31 bls made), ch 2, skip next 2 ch, dc in next ch (sp made), \* dc in next 93 ch (31 more bls made), make 1 sp. Repeat from \* across for length desired, ending with 31 bls. Ch 3, turn. **2nd row:** Skip first dc, dc in next 3 dc (bl made over bl), ch 2, skip next 2 dc, dc in next dc (sp made over bl), make 28 more sps and 1 bl, ch 2, dc in next dc (sp made over sp), \* make 1 bl, 29 sps, 1 bl and 1 sp. Repeat from \* across, ending with 1 bl and having last dc in top of turning chain. Ch 3, turn. **3rd row:** Make 1 bl and 1 sp, 2 dc in next sp, dc in next dc (bl made over sp), make 26 more bls, 1 sp, 1 bl and 1 sp. Follow chart, repeating pattern from "A" to "B" across. Ch 3, turn. **4th row:** Follow chart, repeating pattern from "A" to "B" across. Ch 3, turn. **5th row:** Make 1 bl, 1 sp, 1 bl and 7 sps, (ch 3, sc in next dc, ch 3, dc in next dc—lacet made) twice; make 3 bls, 2 lacets and follow chart across. Ch 3, turn. **6th row:** Make 1 bl, 1 sp, 1 bl and 7 sps, (ch 5, dc in next dc—bar made over lacet) twice; make 3 bls, 2 bars and follow chart across. Ch 3, turn. **7th row:** Make 1 bl, 1 sp, 1 bl, 5 sps and 1 lacet, (ch 3, sc over next bar, ch 3, dc in next dc—lacet made over bar) twice; make 3 bls, 3 lacets and follow chart across. Ch 3, turn. **8th row:** Follow chart across. **9th row:** Make 1 bl, 1 sp, 1 bl, 3 sps and 1 lacet, 5 dc over next bar, dc in next dc

(2 bls made over bar); make 13 more bls, 1 lacet and follow chart across. Ch 3, turn. **10th, 11th and 12th rows:** Follow chart across. **13th row:** Make 1 bl, 1 sp, 1 bl and 3 sps, ch 2, dc over bar, ch 2, dc in next dc (2 sps made over bar), make 3 lacets and follow chart across. Now follow chart to "C".

Now make scalloped edge as follows: **1st row:** Sl st in first 4 dc, ch 3, make 2 bls, 2 sps, 2 bls, 3 sps, (2 bars, 3 sps) twice; 2 bls, 2 sps and 2 bls (1 bl decreased at each end of row on first section). **2nd row:** Sl st in first 8 dc, ch 3 and follow chart across to within last 2 bls of section. Turn. Follow chart to top. Break off. Attach thread at "D" on next section and work as before. Complete remaining scallops the same way.

**Altar Lace S-301**

Starting at "A" on chart, ch 167. **1st row:** Dc in 4th ch from hook and in next 9 ch (3 bls made), ch 2, skip next 2 ch, dc in next ch (sp made), make another sp, 3 bls, 2 sps, 15 bls, 1 sp, 1 bl, 5 sps, 1 bl, 1 sp, 1 bl, 5 sps, 13 bls and 2 sps. Ch 5, turn. **2nd row:** Skip first dc, dc in next dc, ch 2, dc in next dc (2 sps made over 2 sps), dc in next 3 dc (bl made over bl), ch 2, skip next 2 dc, dc in next dc (sp made over bl), make another sp, 1 bl, 3 sps, 2 bls, 1 sp and 3 bls, 2 dc in next sp, dc in next dc (bl made over sp), make 3 sps, 5 bls, 3 sps, 3 bls, (1 sp, 1 bl) 6 times; 1 sp, 3 bls, 2 sps, 1 bl, 1 sp, 1 bl, 2 sps and 1 bl, dc in next 2 dc, dc in top of turning chain, (thread over, insert hook at base of last dc made, draw loop through, thread over and draw through 1 loop for foundation chain, then thread over and complete a dc—foundation dc made) 3 times. Ch 5, turn (1 bl increased at end of row). **3rd row:** Dc in 4th ch from hook and in next ch, dc in next dc (1 bl increased at beginning of row), make 2 more bls and follow chart across to within last sp, ch 2, skip next 2 ch, dc in next ch. Ch 5, turn. Follow chart until 22 rows have been completed. Do not chain at end of last row. Turn. **23rd row:** Sl st in first 4 dc, ch 3 and follow chart across (1 bl decreased at beginning of row). Ch 5, turn. Follow chart to "B". Then repeat chart from "A" to "B" for length desired, ending at base of any scallop. Break off.

**Altar Lace S-302**

Starting at "A" on chart, ch 195. **1st row:** Dc in 4th ch from hook, dc in next 2 ch (bl made), ch 2, skip 2 ch, dc in next ch (sp made), make 7 more sps, dc in next 3 ch (another bl made), make 6 sps, 3 bls, 12 sps, 1 bl, 1 sp, 1 bl, 17 sps, 1 bl, 4 sps, (1 bl, 1 sp) twice; 1 bl, 3 sps. Ch 8, turn. **2nd row:** Dc in first dc (1 sp increased at beginning of row), ch 2, dc in next dc (sp made over sp), 2 dc in next sp,

dc in next dc (bl made over sp), make 1 sp, ch 2, skip 2 dc, dc in next dc (sp made over bl), make (1 bl, 1 sp) twice; 1 bl, 3 sps, dc in next 3 dc (bl made over bl), 10 sps, 1 bl, 7 sps, 1 bl, 1 sp, 1 bl, 28 sps, 2 bls, ending with dc in top of turning chain. Ch 3, turn. **3rd row:** Skip first dc, dc in next 3 dc and follow chart across. At end of row ch 5, dc in same place as last dc. Turn (1 sp increased at end of row). **4th row:** Sl st in first 3 ch, ch 8, dc in same place as last sl st and follow chart across. **5th to 9th rows incl:** Follow chart, ending at scalloped end. At end of 9th row, do not chain to turn. **10th row:** Sl st in next 2 ch and in next dc, ch 5, dc in next dc and follow chart across. Continue following chart to "B". Follow chart from "A" to "B" for length desired. Then repeat first row once more. Break off.

**Rick-Rack Edging S-296**

*Continued from page 12*

**1st row:** Ch 3, dc in next 4 points, \* (ch 5, sc in next point) twice; ch 5, dc in next 5 points. Repeat from \* across. Break off. **2nd row:** Attach thread to top of starting chain, ch 4, \* in next ch-5 sp make tr, ch 5 and dc, ch 3, dc in next sp, ch 3, in next sp make dc, ch 5 and tr. Repeat from \* across. Break off. **3rd row:** Attach thread to top of starting chain, ch 3, dc in next sp, \* ch 5, (dc in next dc, ch 3) twice; dc in next dc, ch 5, dc in next 2 sps. Repeat from \* across. Break off.

**Rick-Rack Edging S-297**

**SCALLOPED EDGE . . .** Attach thread to first point on rick-rack. **1st row:** \* (Ch 5, sc in next point) 6 times; ch 5, holding back on hook the last loop of each dc, make dc in next 7 points, thread over and draw through all loops on hook (joint-dc made). Repeat from \* across. Break off.

**HEADING . . .** Attach thread to first point on opposite side of rick-rack between last 2 joint-dc. **1st row:** \* (Ch 5, sc in next point) 4 times; ch 5, (dc in next point, ch 1) 8 times; dc in next point. Repeat from \* across. Ch 5, turn. **2nd row:** Holding back on hook the last loop of each tr make 2 tr in first sp, thread over and draw through all loops on hook (cluster made); \* 3-tr cluster in next ch-5 sp, ch 5, dc in next sp, ch 5, sc in next sp, ch 5, dc in next sp, ch 5, 3-tr cluster in next sp. Repeat from \* across, ending with cluster in last sp. Ch 4, turn. **3rd row:** 2-tr cluster in first sp, \* (ch 5, dc in next sp) twice; ch 5, 3-tr cluster in next 2 sps. Repeat from \* across. Break off.



# Edgings

FOR ALL PURPOSES

S-252

S-254

S-251

