

The Antique Pattern Library

For more information, please see our website at: <http://www.antiquepatternlibrary.org>

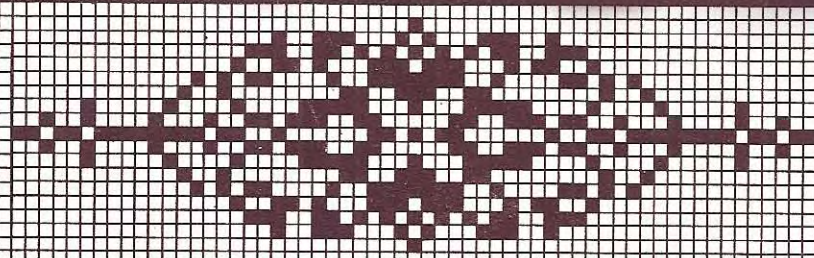


This is a scan of an antique book that is, to the best of our knowledge, in the public domain. The scan itself has been photo-edited for readability, and is licensed under the **Creative Commons** Attribution-NonCommercial-ShareAlike License. To view a copy of this license, visit <http://creativecommons.org/licenses/by-nc-sa/2.5/> or send a letter to Creative Commons, 559 Nathan Abbott Way, Stanford, California 94305, USA.

You may share copies or printouts of this scan freely. You may not sell copies or printouts.

Donated by
Ann Heiser

07/2010



The
ANTONIE EHRLICH
Crochet Book

No. 3

Filet Crochet

Published by
THE EHRLICH PUBLISHING CO.
PHILADELPHIA

PRICE 25 CENTS

The
ANTONIE EHRLICH
CROCHET BOOK
No. 3

ORIGINAL DESIGNS IN
FILET CROCHET

BY
ANTONIE EHRLICH

PUBLISHED BY
THE EHRLICH PUBLISHING CO.
1211 ARCH STREET
PHILADELPHIA

Entered according to Act of Congress, in the year 1915, by Antonie Ehrlich, in the office of the Librarian of Congress, Washington, D. C.
All rights reserved
SIXTH EDITION



No. 1

PREFACE

FILET CROCHET is probably the most fascinating of all crochet work. It offers the widest possible opportunities in its adaptability for every kind of decoration. It adds the individual touch to table and bedroom linens, and is essentially in keeping with period furniture. A wide range of designs and models is presented, in most cases the original; but in all, the diagrams, clearly showing the design in black and white.

We have endeavored throughout the book to suggest to you some of the manifold uses to which these designs may be put, and one should always bear in mind that good cottons and close, even work are essential for the best results.

EXPLANATORY

Filet crochet is worked in "open" and "closed" blocks (sometimes called mesh), represented in the diagrams in white and black squares respectively, and done entirely in chain and double crochet.

CHAIN or CH.: Make a loop, insert the hook, throw thread over hook, and draw a loop through first one made. Each loop is a chain stitch.

DOUBLE CROCHET or D. C.: Wrap, draw up a loop, draw thread through 1, then draw thread through 2, then draw thread through last 2.

OPEN BLOCK: 1 d. c., ch. 2, skip 2 stitches, 1 d. c. in next stitch to close block, which forms a perfect square. In making rows of open blocks, the d. c. is always made in the d. c. of preceding row.

CLOSED BLOCK: 1 d. c. on 1 d. c., 1 d. c. each on next 2 chain, 1 d. c. on next d. c.

The number of blocks given on the diagrams represent the first row; for the foundation chain make 3 times as many chain stitches as blocks and add 1. Always chain 5 to turn.

The work to be effective must be done firmly and evenly; both loops at top of d. c. should be used and when working closed blocks over open blocks the d. c. should be made *in* the chain stitch, not *around* the chain.

Choose a good thread and use as fine a hook as possible. The following table will assist you in planning your work. It is necessarily only approximate:

No. of Thread	No. of Hook	Blocks to Inch	No. of Thread	No. of Hook	Blocks to Inch
3	8	3½	50	12	7½
5	9	4½	60	13	8
10	9	5	70	14	8½
20	10	6	80	14	8½
30	10	6	100	14	9
40	12	7	150	14	10

No. 1. This handsome mahogany tray, measuring 14½ x 17½ inches, is 116 blocks square. The pattern can easily be followed from the illustration. For a variety of tray patterns see Nos. 16, 52, 59, 78, 85, 88, 90, 95.

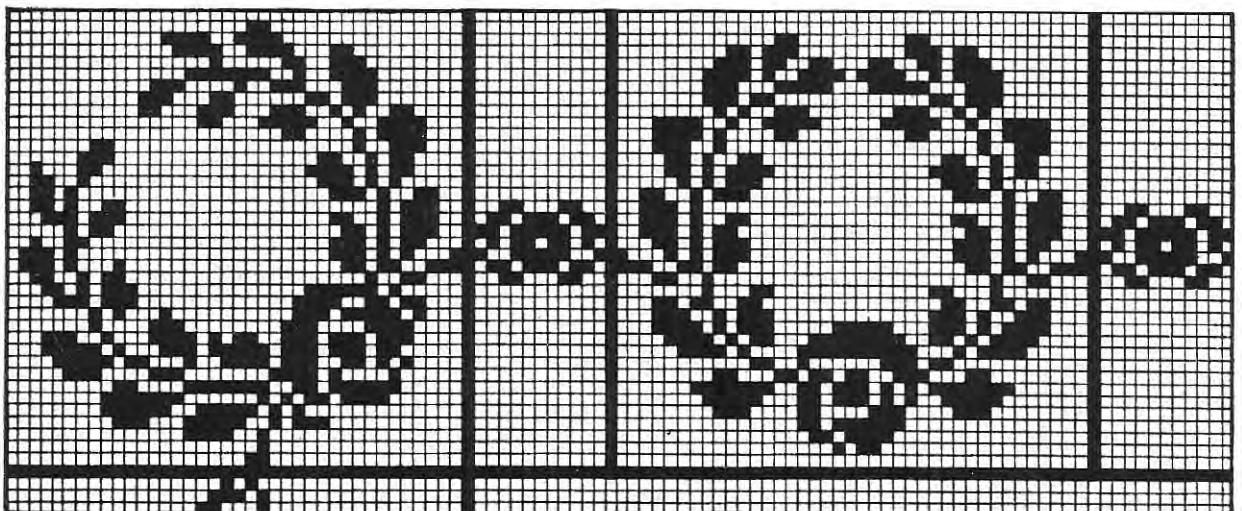
No. 3. Makes a very charming insertion and corner for a tea cloth. The unit squares can also be used for inserting in ends of table covers, etc.

No. 4. Shows a chair-back or chair-tidy now so much in vogue. For other designs see Nos. 10, 11, 16, 54, 55, 78, 82, and The Antonie Ehrlich Crochet Book No. 1, which contains a variety of patterns for chair backs.



No. 2

95 x 95 Blocks



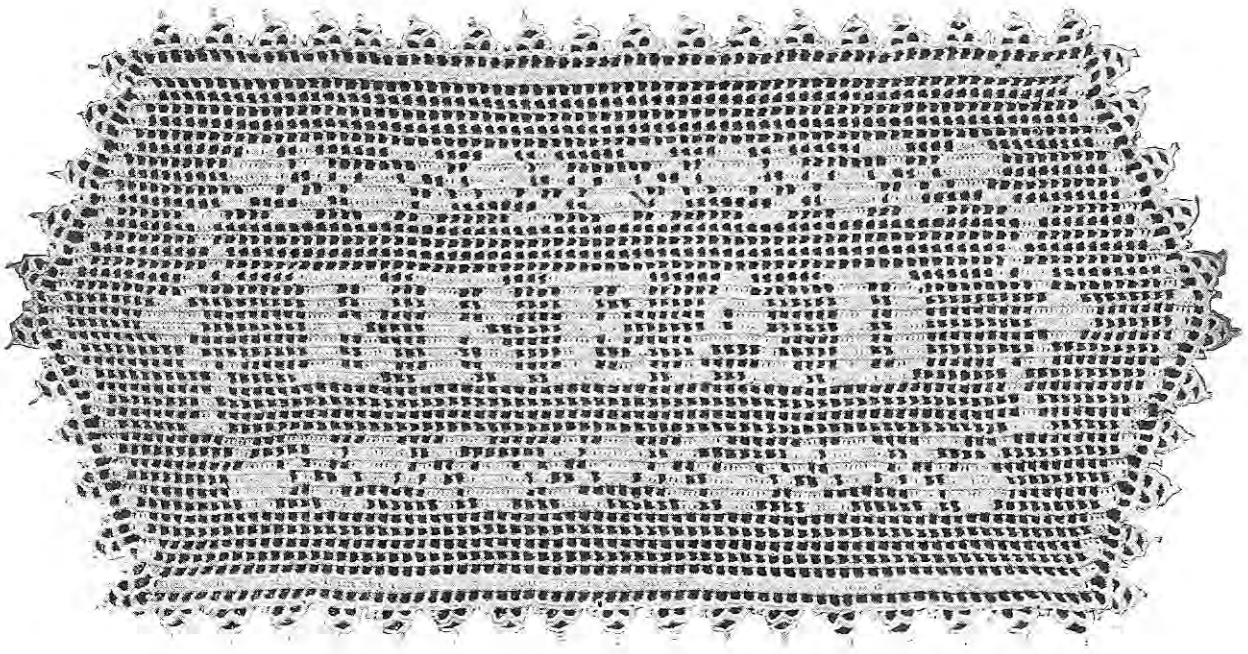
No. 3

42 Blocks



No. 4

95 x 95 Blocks

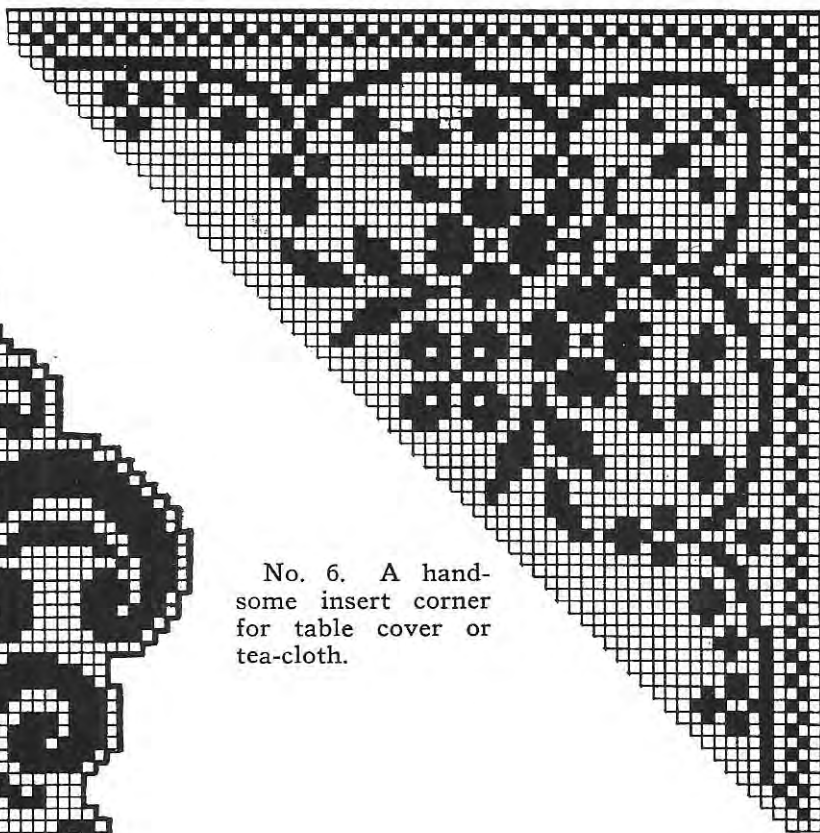


No. 5

70 x 43 Blocks

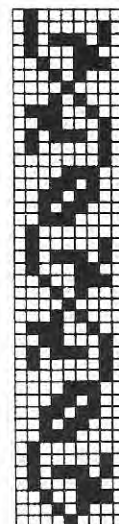


No. 7



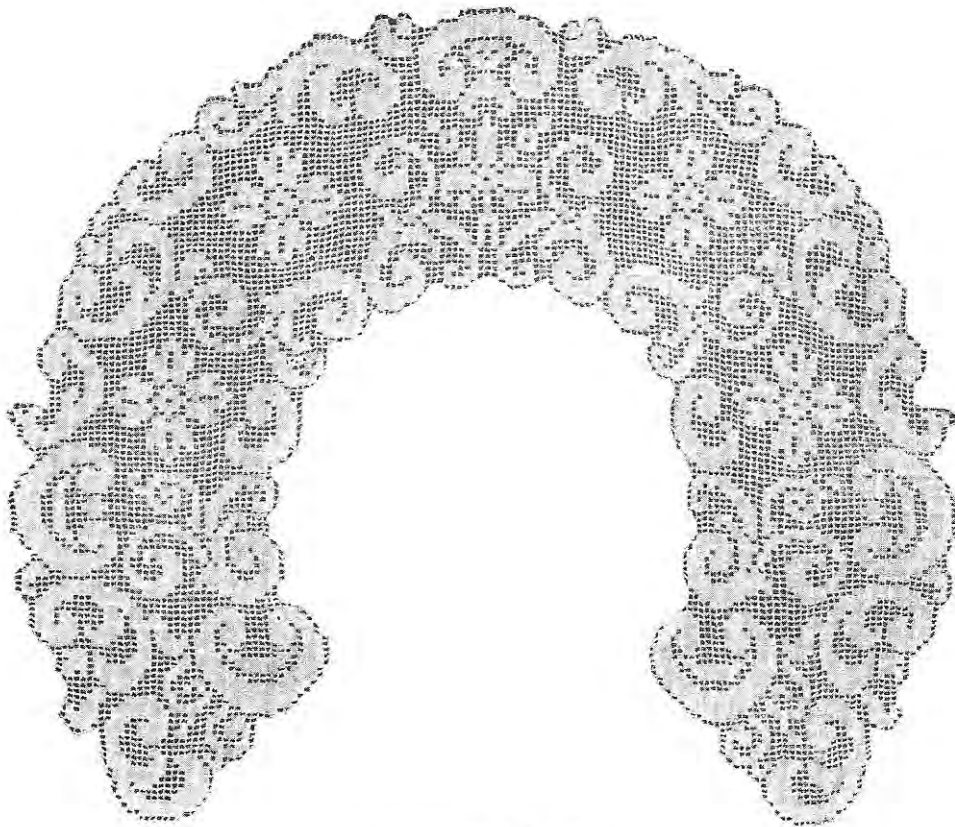
No. 6. A handsome insert corner for table cover or tea-cloth.

No. 6
68 Blocks



No. 8
9 Blocks

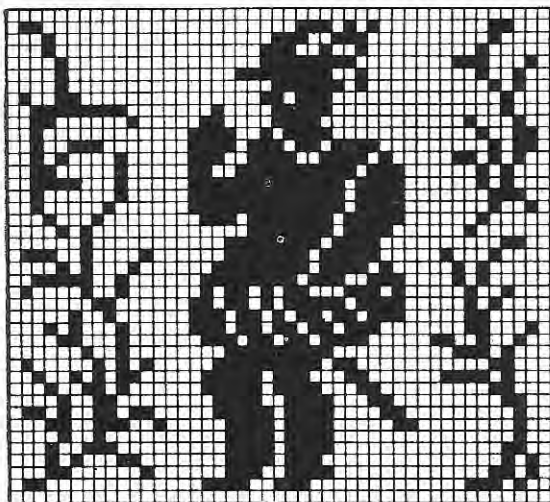
A



No. 9 (see No. 7)

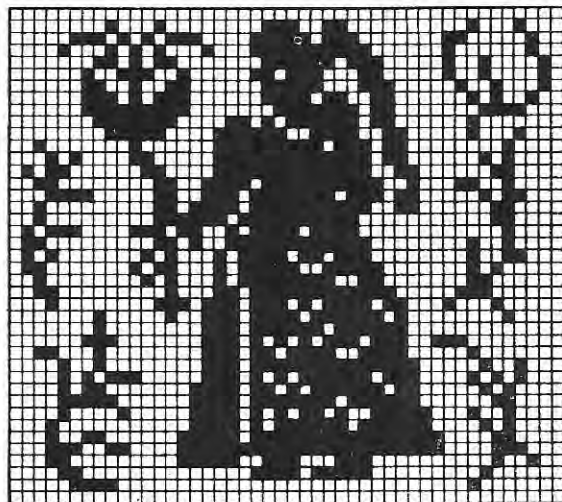
No. 9. This antique filet lace collar design, worked in No. 80 cotton, is begun at center marked A (41 blocks). Both sides are worked from this point. The cross unit (19 blocks) can be used at regular intervals for an insertion or for a small medallion, similar to 48, 49, 64, 65, 66, 67, 100.

Nos. 10 and 11. Companion designs suitable for tidies, chair-backs or inserting in the ends of table runners or for curtains. See also Nos. 48, 49, 60 to 63, 79, 80



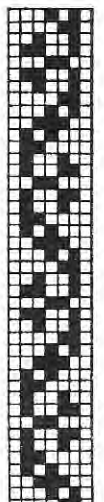
No. 10

45 x 42 Blocks

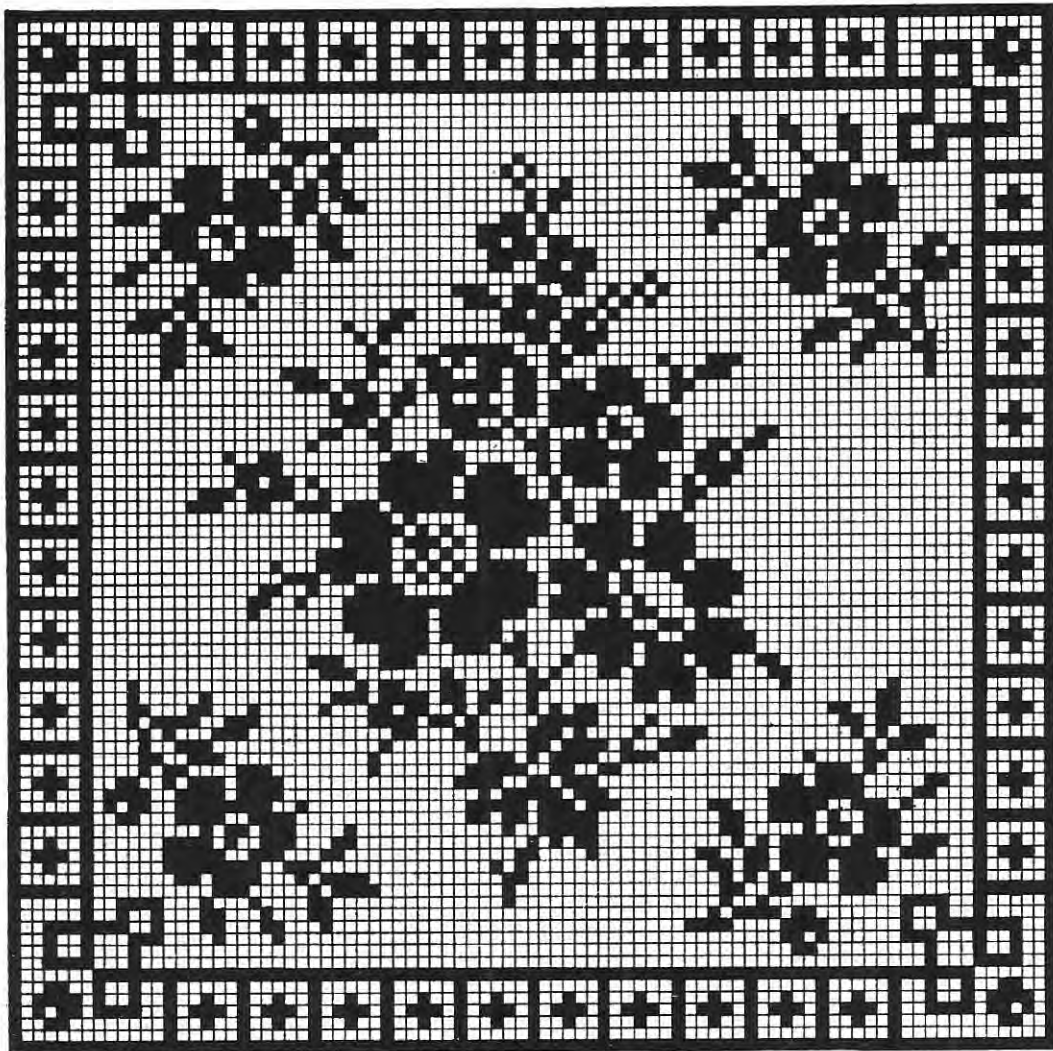


No. 11

46 x 42 Blocks

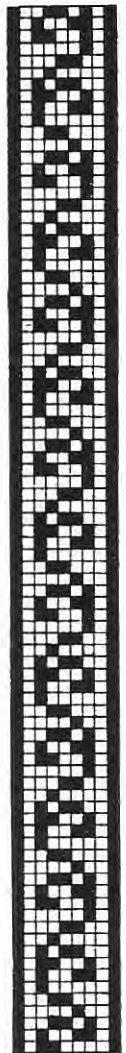


No. 12
7 Blocks

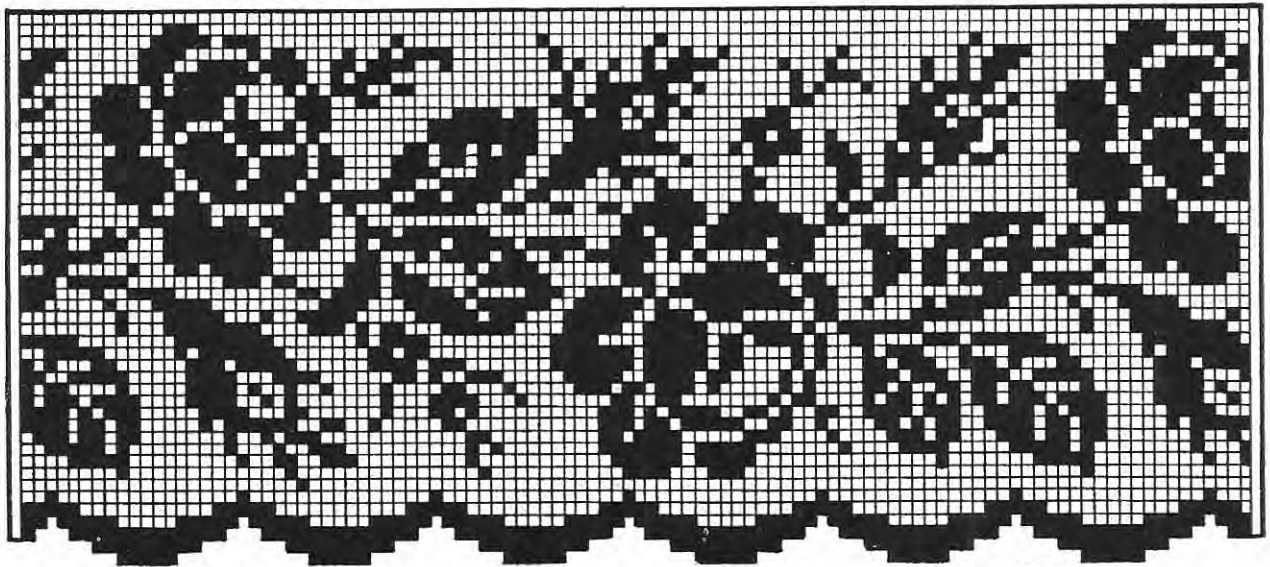


No. 13

85 x 85 Blocks



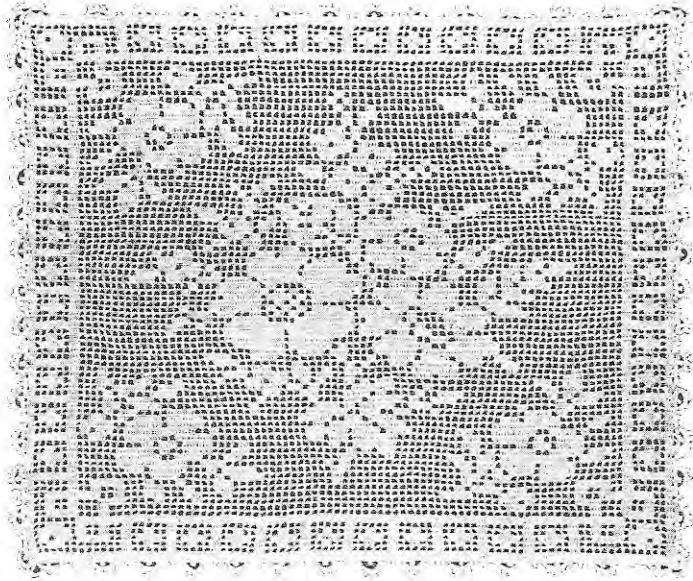
No. 14
9 Blocks



No. 15

46 Blocks

No. 15. A striking rose pattern suitable for bedspreads with alternate strips of linen. For the insertion make pattern 45 blocks wide, thus allowing 3 rows of open blocks either side of pattern. For other patterns suitable for bedspreads see Nos. 18, 53, 87 and The Antonie Ehrlich Crochet Book No. 2, devoted exclusively to Knitted and Crocheted Bedspreads.

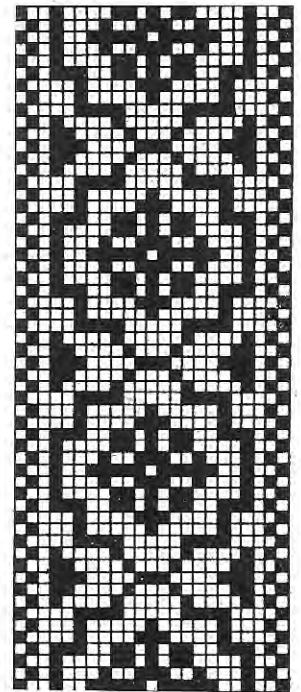


No. 16 (see No. 13)

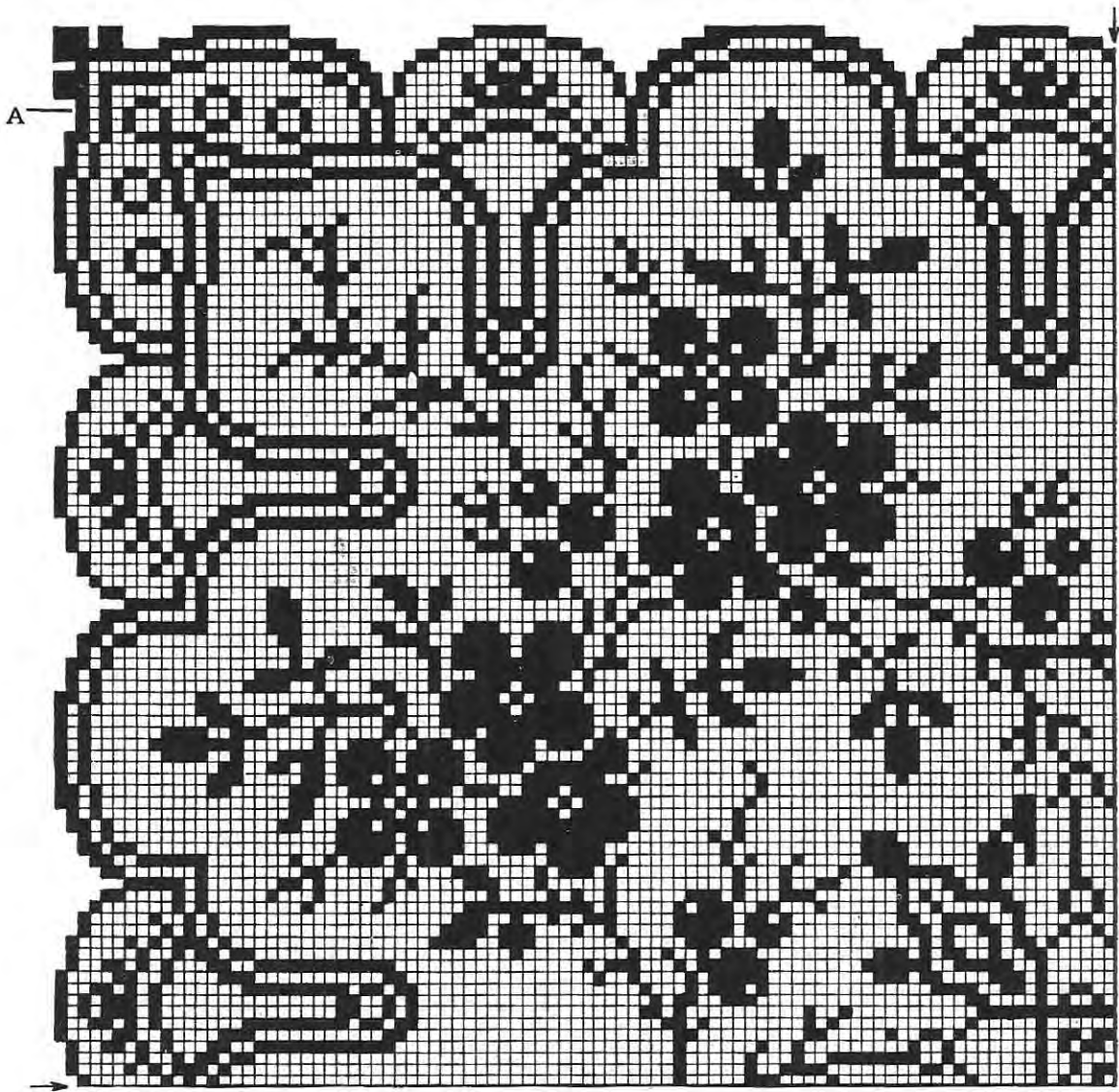


No. 17

67 x 70 Blocks

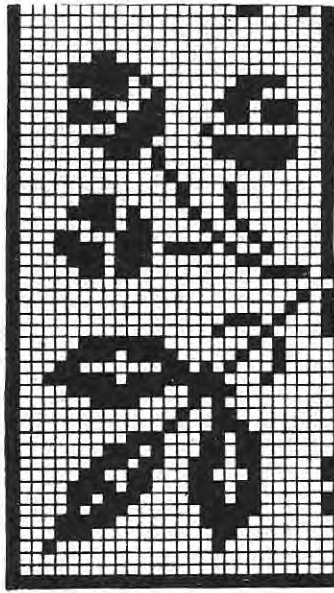


No. 18
23 Blocks



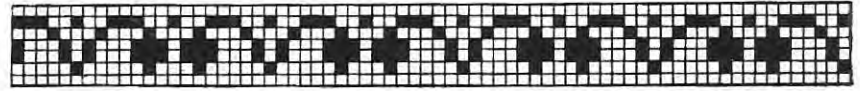
No. 19

182 Blocks



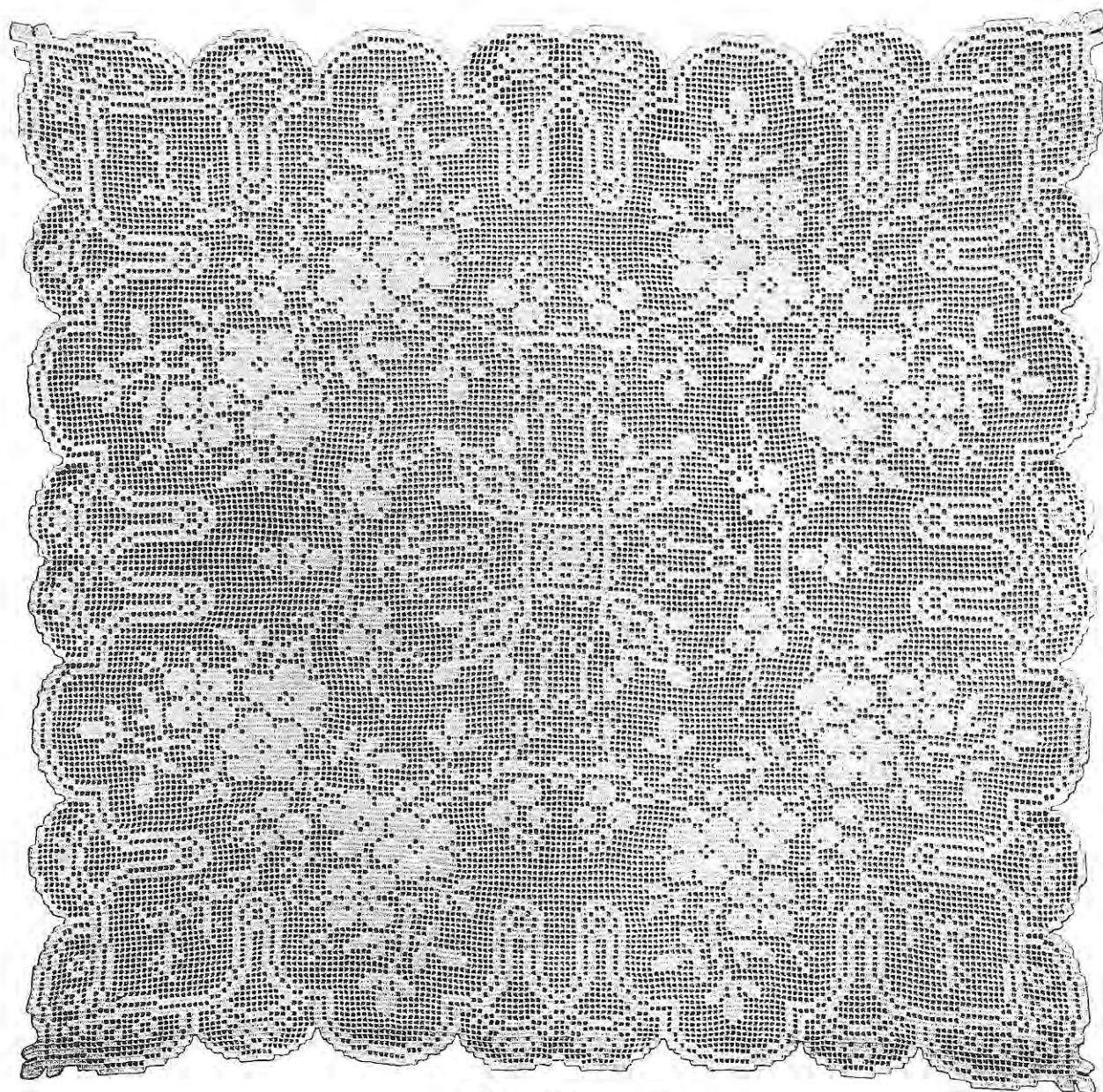
No. 21

27 Blocks



No. 20

7 Blocks



No. 22 (see No. 19)

No. 22 shows a beautiful table cover, made in No. 60 cotton, the work measuring 29 inches square. The diagram is exactly one-quarter of the design, the arrows marking the last row from which point the pattern is reversed. Begin at point marked A and work across. For other table covers Nos. 53 and 90 are very desirable.

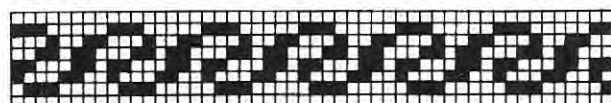
No. 21. Insertion and corner. For other patterns see Nos. 50, 93, 94.



No. 23 6 Blocks



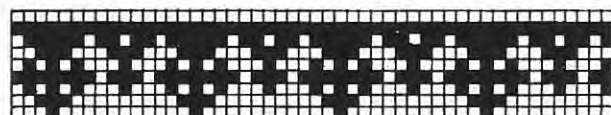
No. 24 7 Blocks



No. 25 8 Blocks



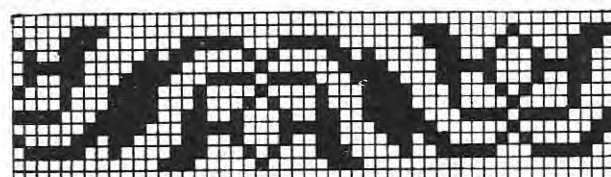
No. 26 9 Blocks



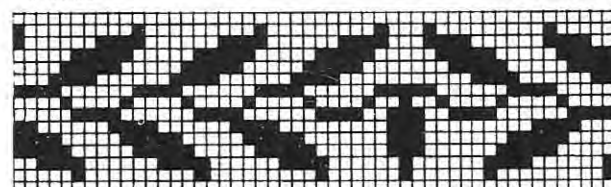
No. 27 9 Blocks



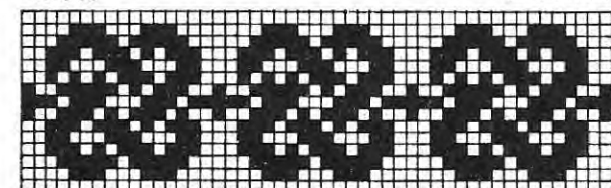
No. 28 10 Blocks



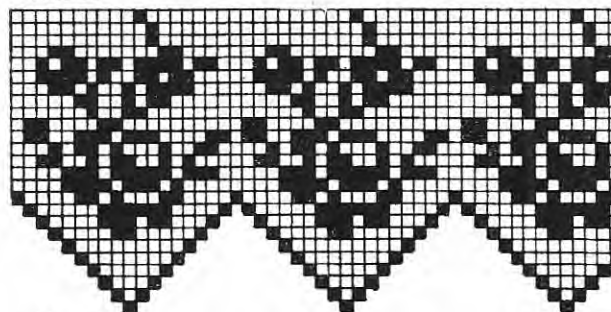
No. 29 14 Blocks



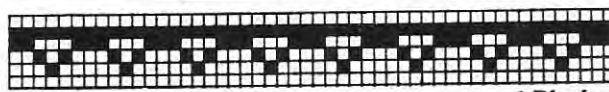
No. 30 15 Blocks



No. 31 15 Blocks



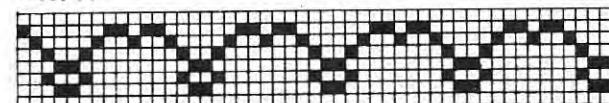
No. 32 25 Blocks



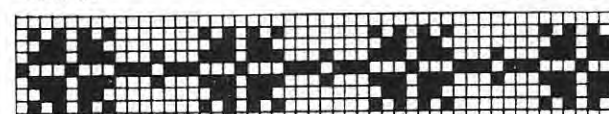
No. 33 6 Blocks



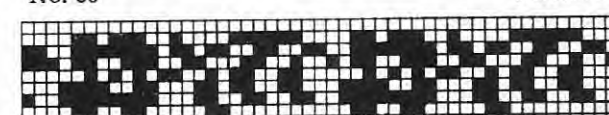
No. 34 7 Blocks



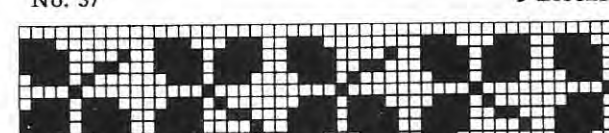
No. 35 8 Blocks



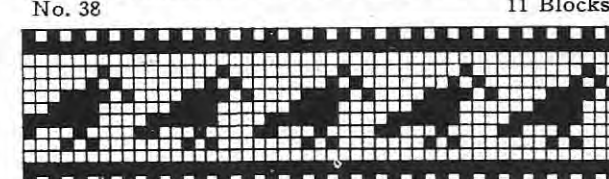
No. 36 9 Blocks



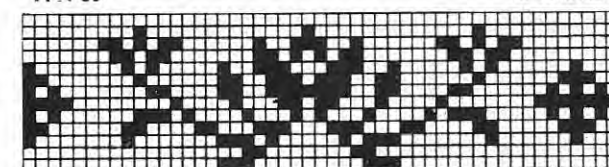
No. 37 9 Blocks



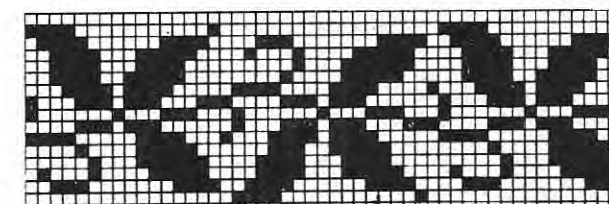
No. 38 11 Blocks



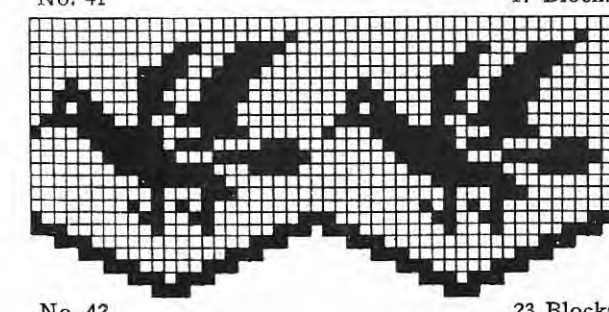
No. 39 13 Blocks



No. 40 13 Blocks

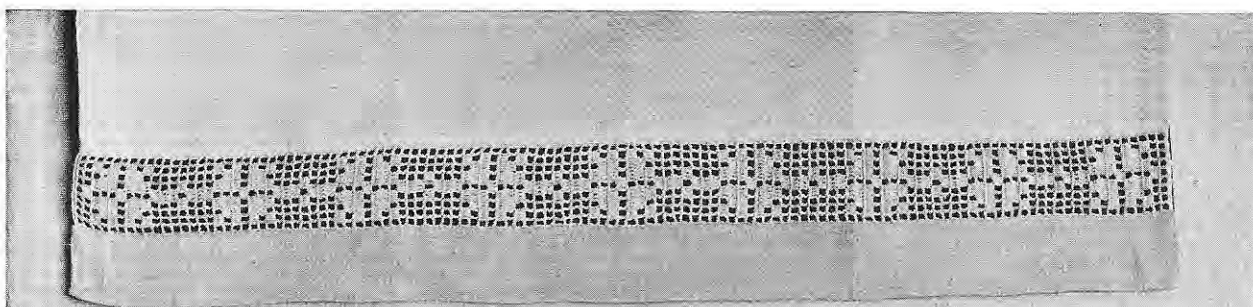


No. 41 17 Blocks

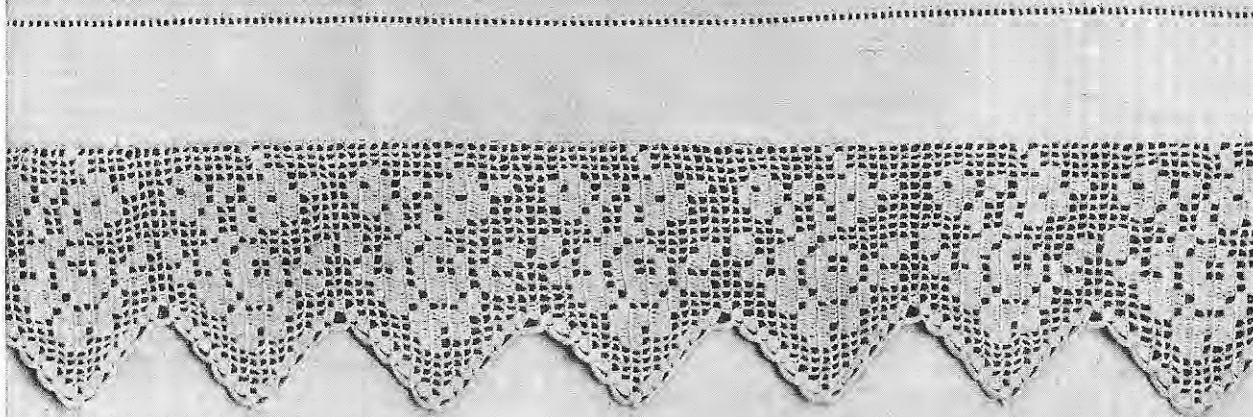


No. 42 23 Blocks

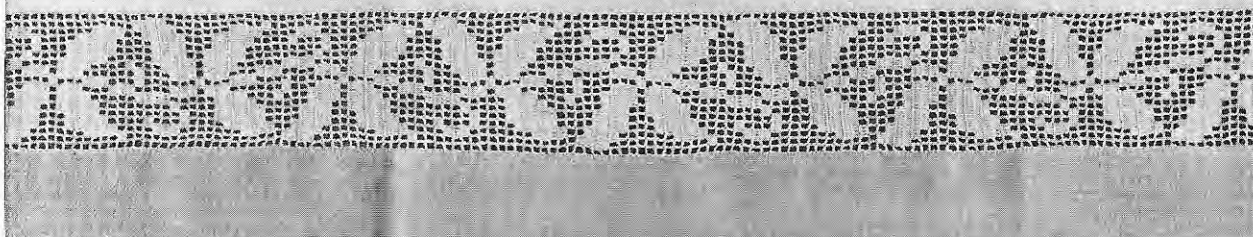
No. 43
(See
No. 36)



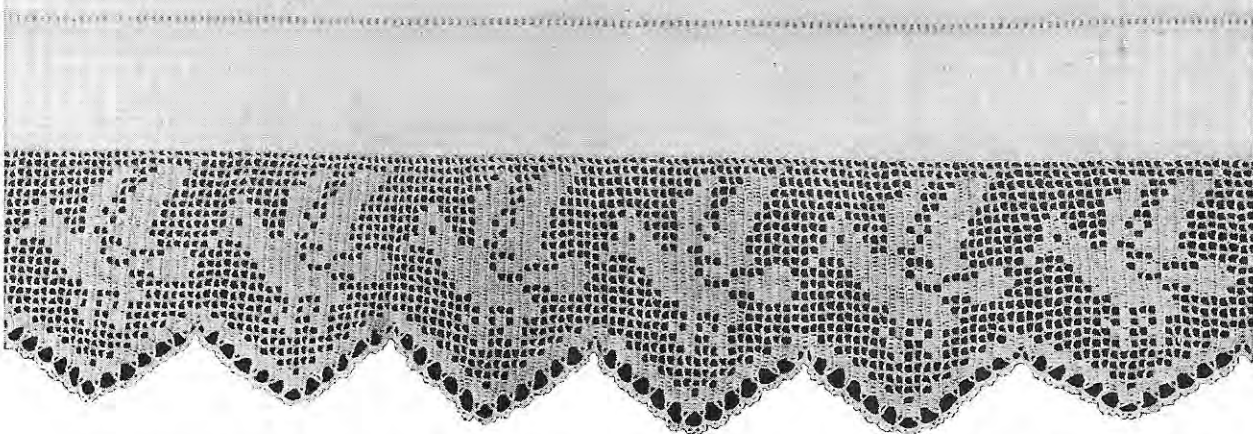
No. 44
(See
No. 32)



No. 45
(See
No. 41)



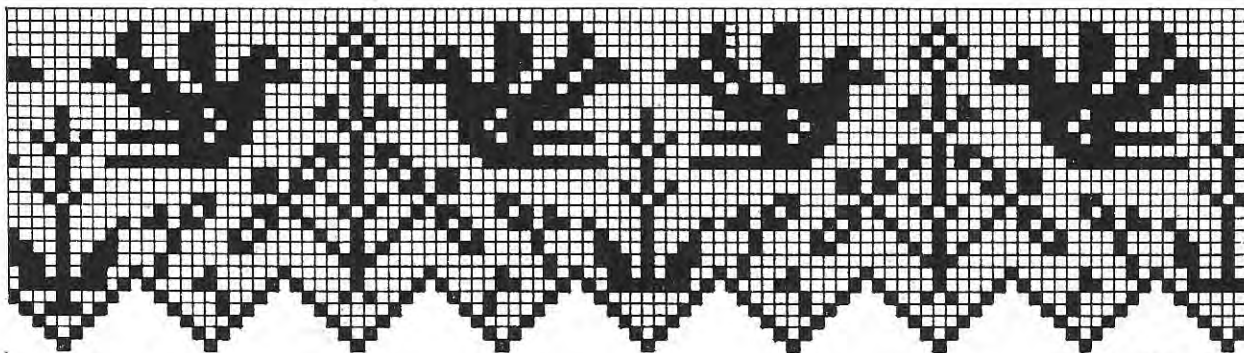
No. 46
(See
No. 42)



Towel Insertions: The models shown on this page will give you some idea of the possibilities of narrow and wide insertions and laces for towels. Nothing could be more complete than the range of designs shown by Nos. 8, 12, 20, 23 to 42, 47, 57, 58, 72 to 77, 84, 92, 97.

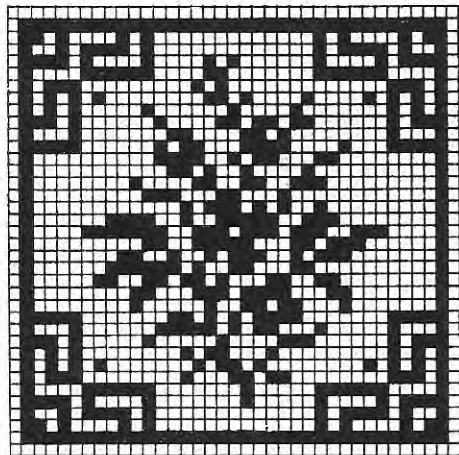
Combinations of any of these patterns and the alphabets shown on pages 30 and 31 will be very effective.

The designs on page 22 are adapted for cross-stitching on bibs, towels, etc., for the children.



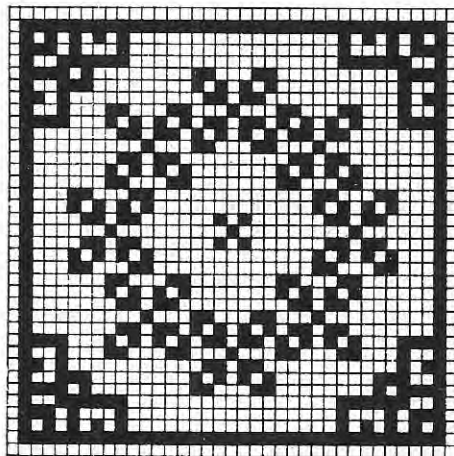
No. 47

29 Blocks



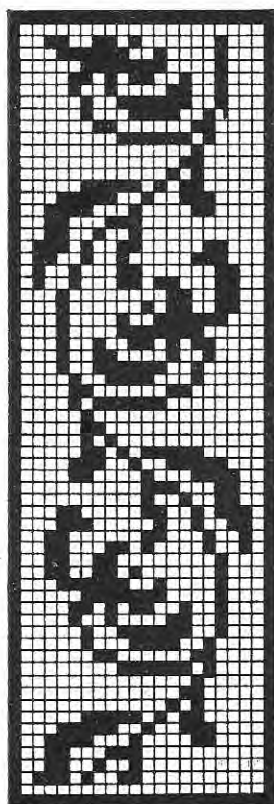
No. 48

37 Blocks



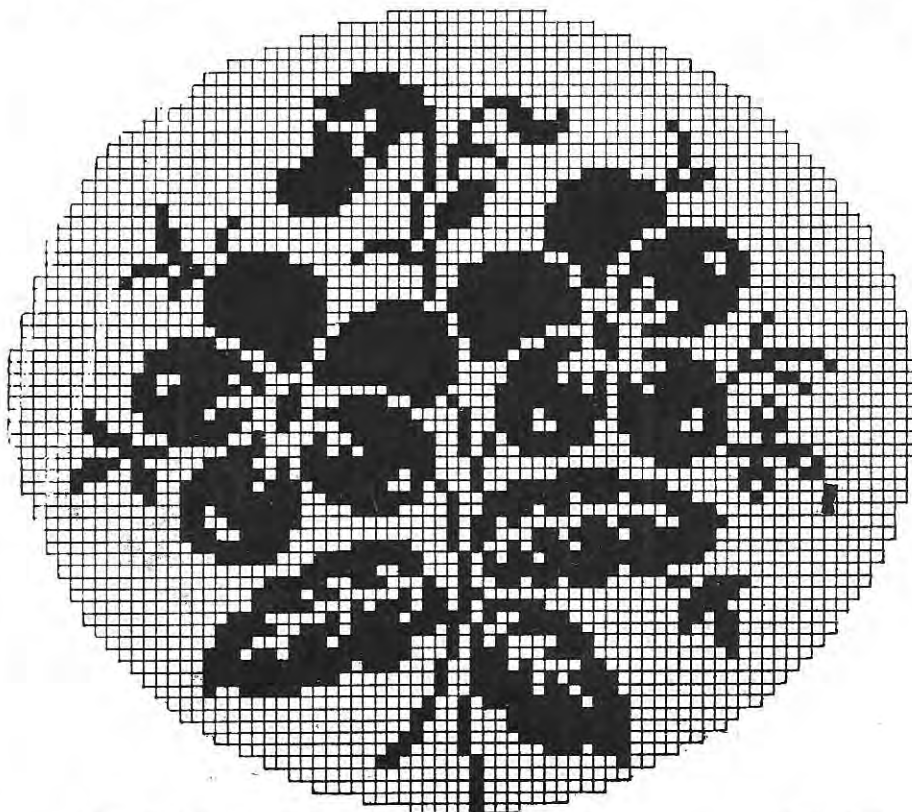
No. 49

37 Blocks



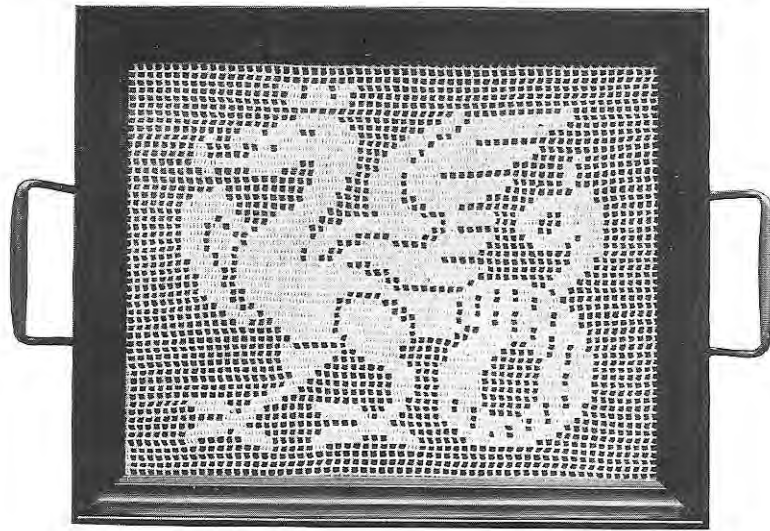
No. 50

22 Blocks



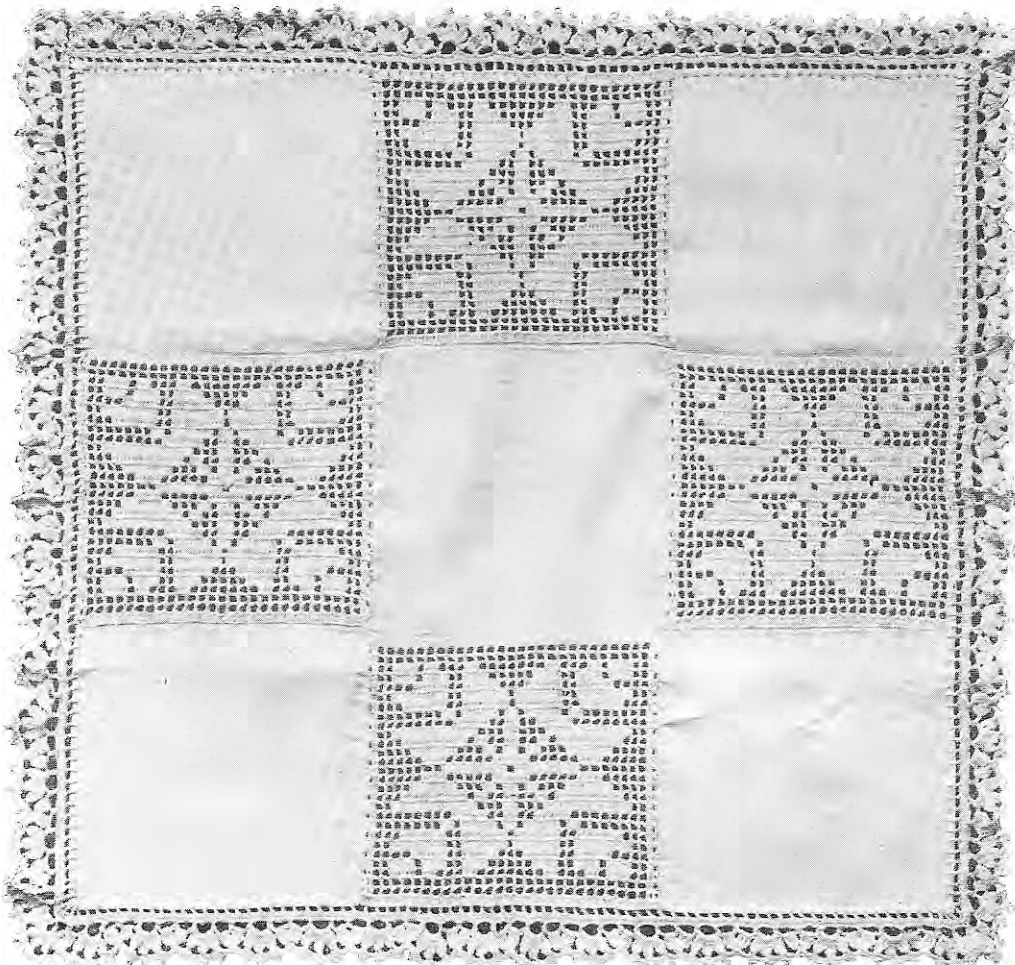
No. 51 (see No. 59)

75 Blocks

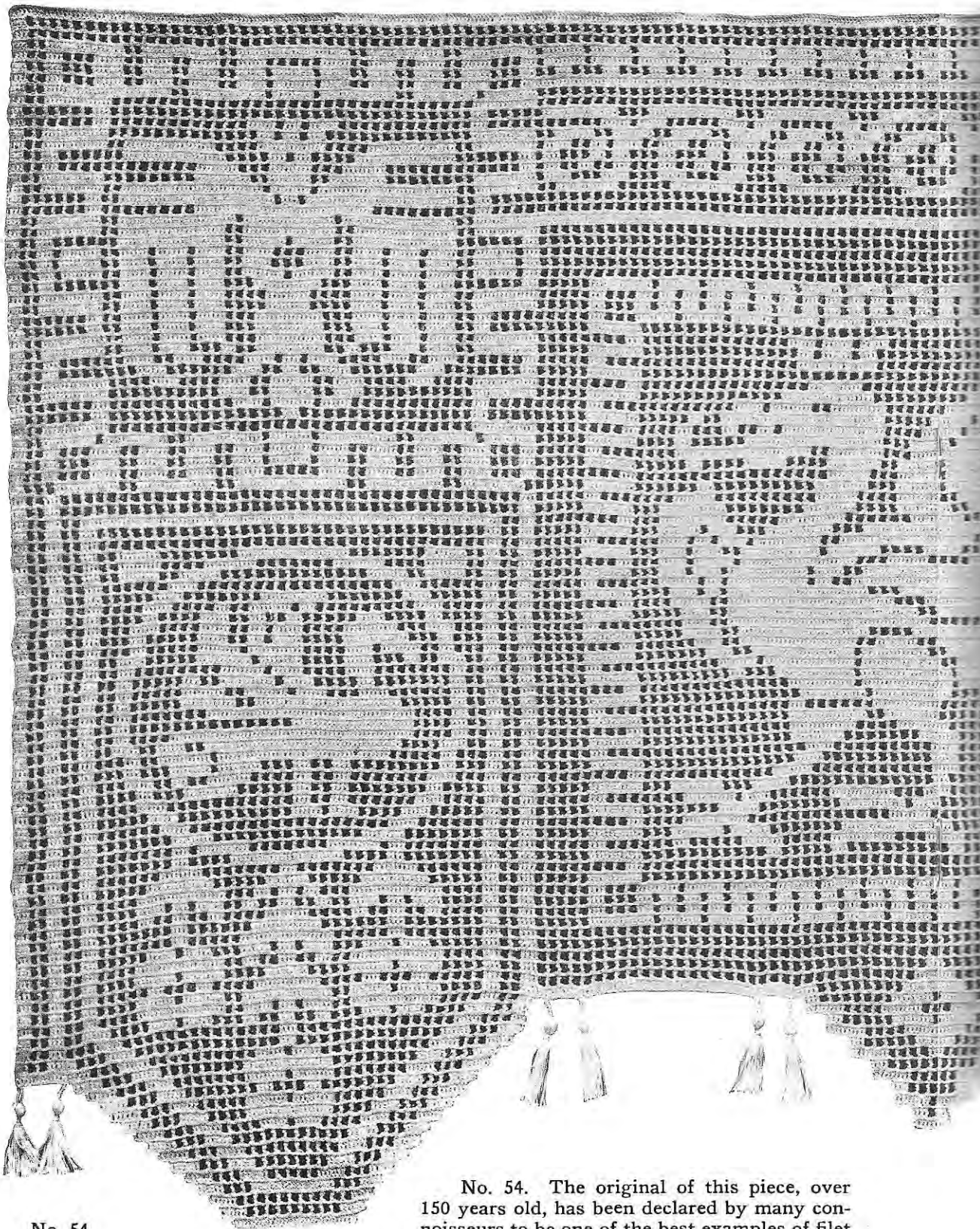


No. 52 (see No. 54)

69 Blocks

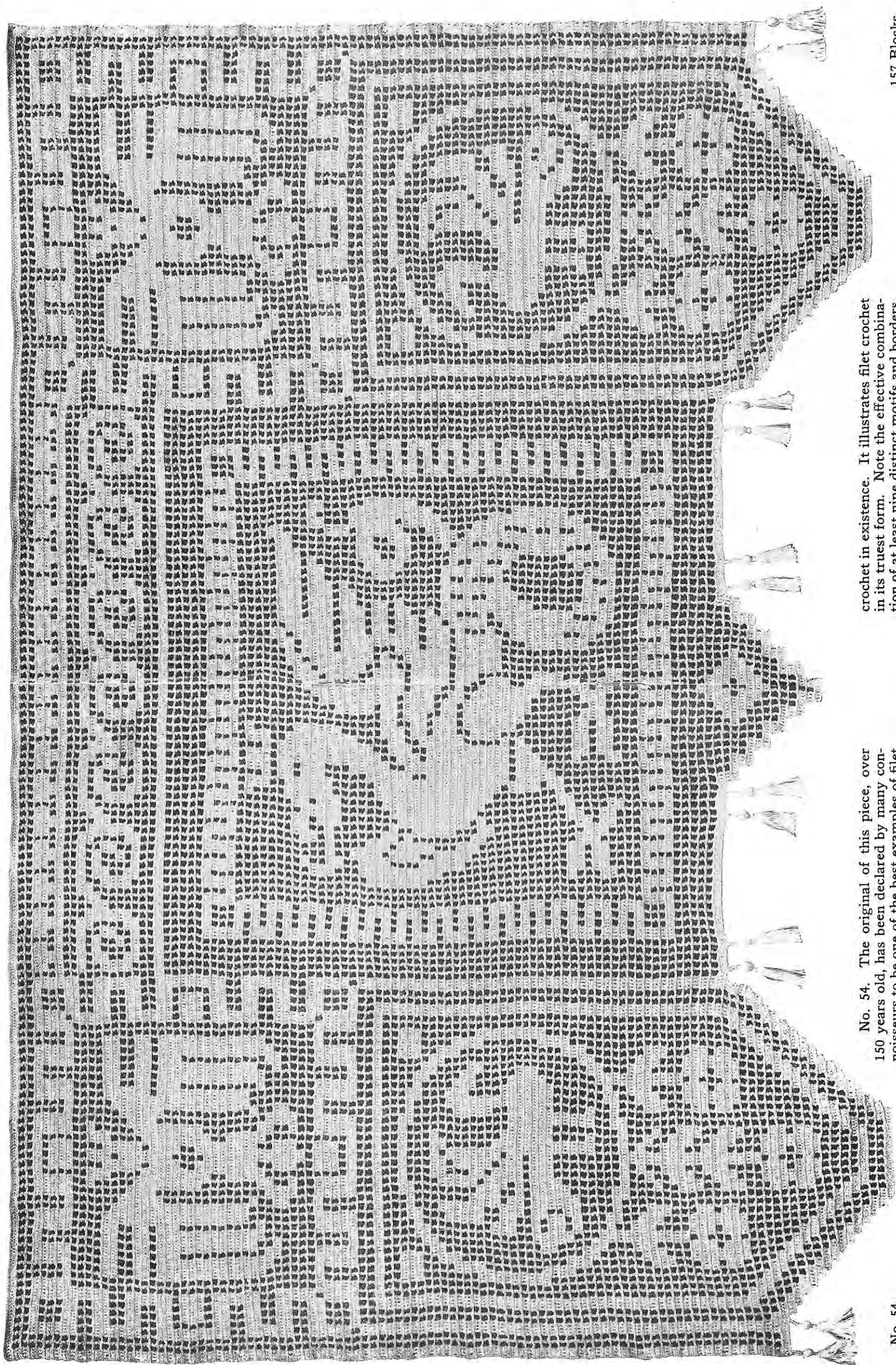


No. 53 (see No. 64)



No. 54

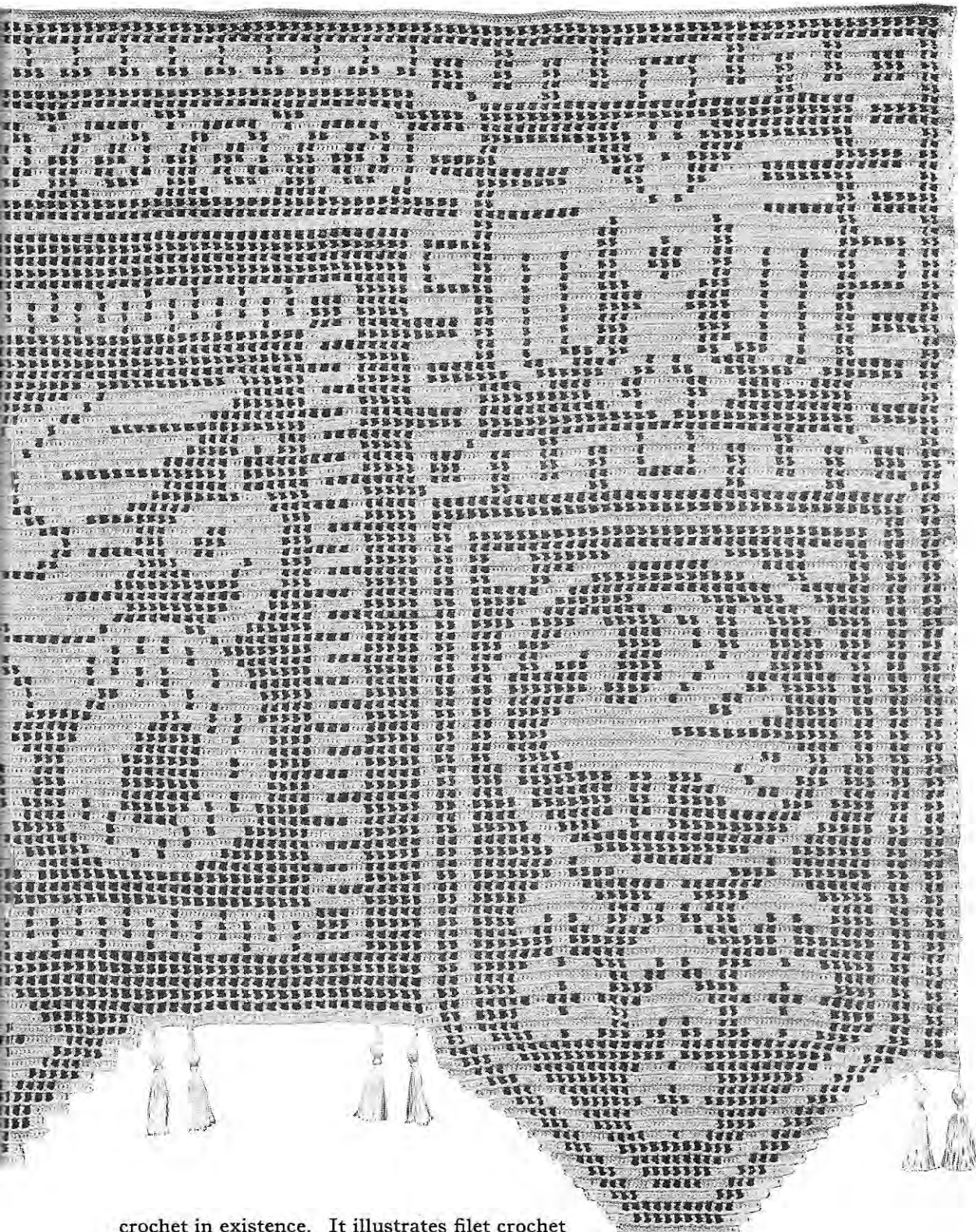
No. 54. The original of this piece, over 150 years old, has been declared by many connoisseurs to be one of the best examples of filet



No. 54. The original of this piece, over 150 years old, has been declared by many connoisseurs to be one of the best examples of filet crochet in existence. It illustrates filet crochet in its truest form. Note the effective combination of at least nine distinct motifs and borders.

No. 54

157 Blocks



crochet in existence. It illustrates filet crochet in its truest form. Note the effective combination of at least nine distinct motifs and borders.

157 Blocks

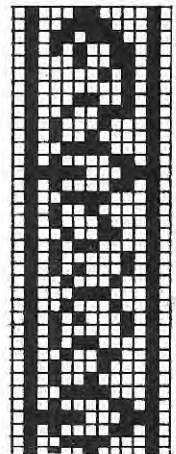


No. 55

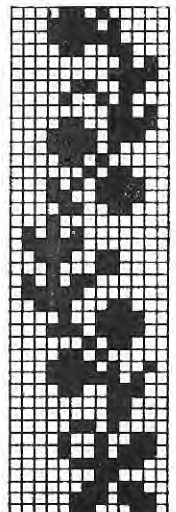


No. 56

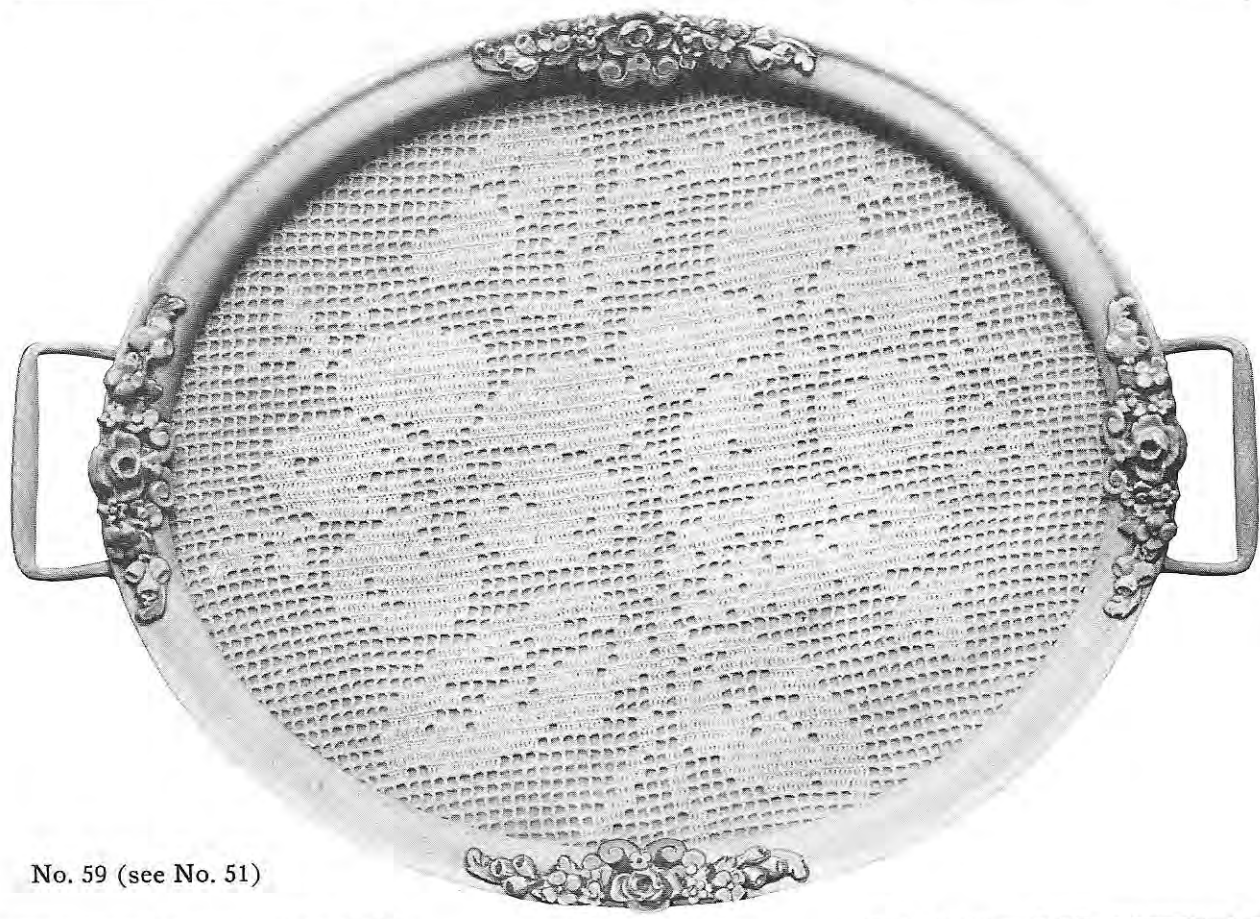
87 x 87 Blocks



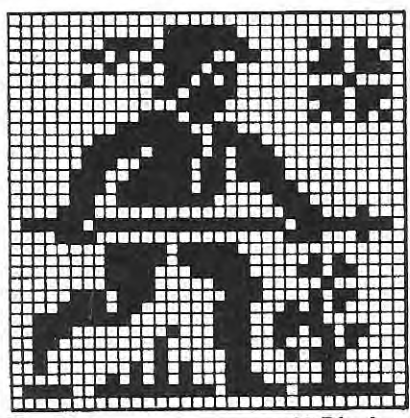
No. 57
12 Blocks



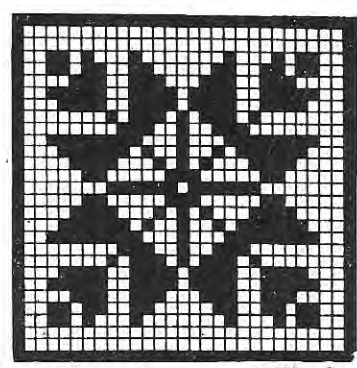
No. 58
13 Blocks



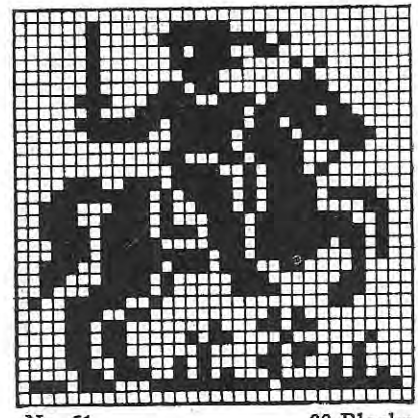
No. 59 (see No. 51)



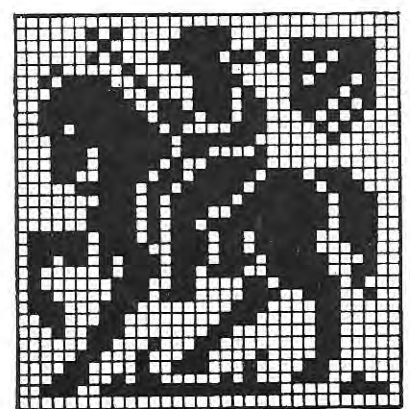
No. 60 33 Blocks



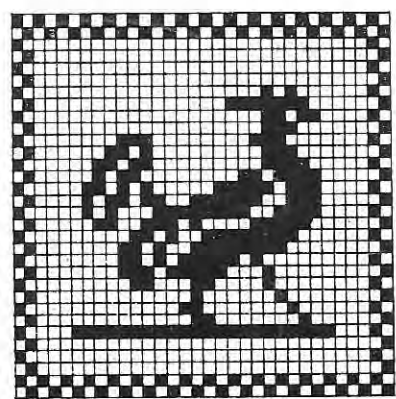
No. 64 29 Blocks



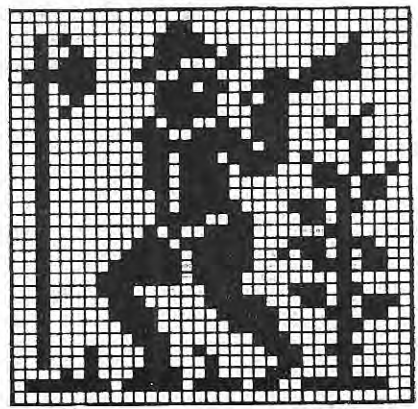
No. 61 33 Blocks



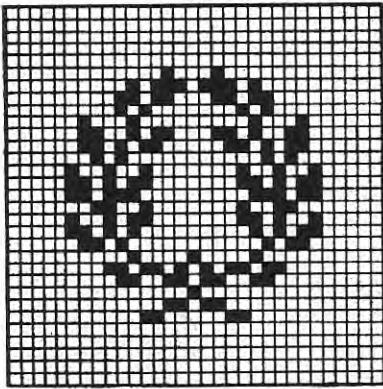
No. 62 32 Blocks



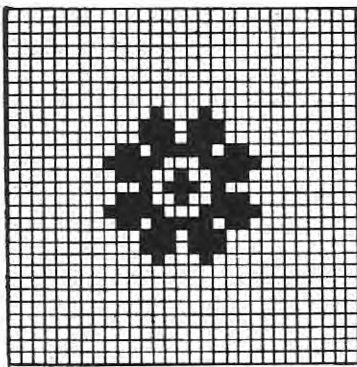
No. 65 32 Blocks



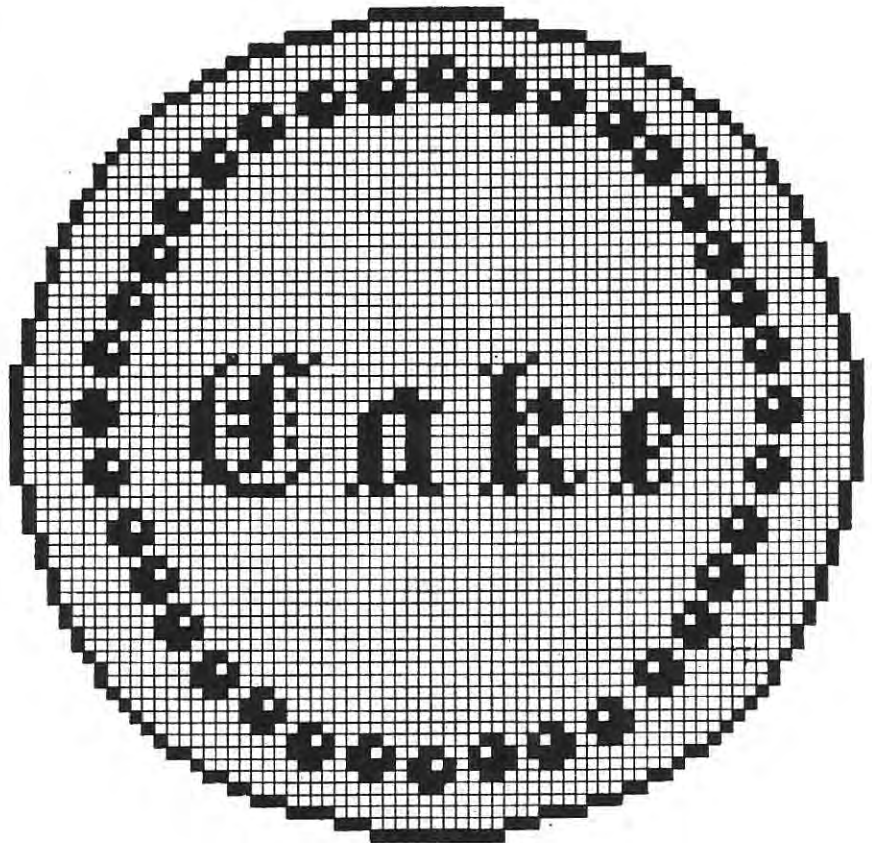
No. 63 33 Blocks



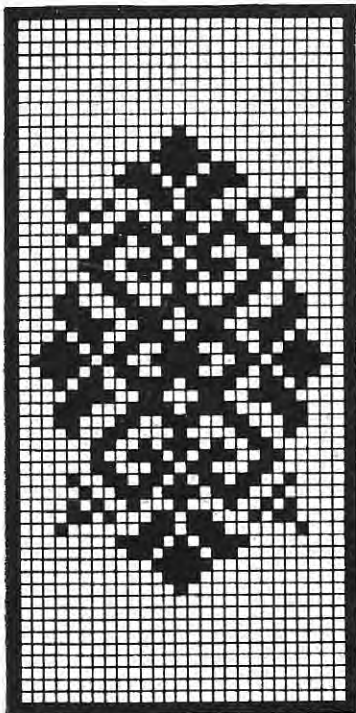
No. 66 31 Blocks



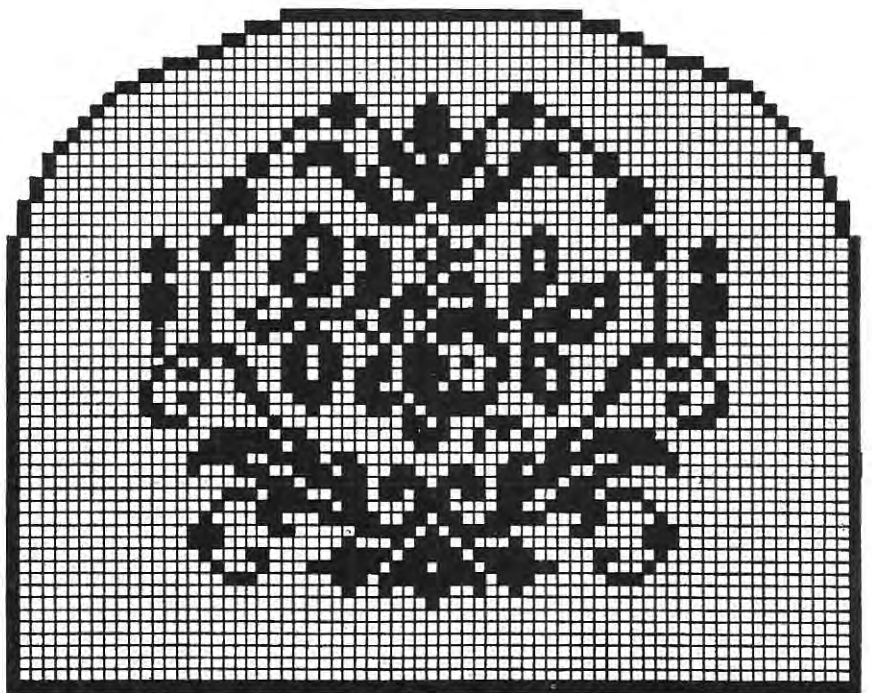
No. 67 29 Blocks



No. 68 71 Blocks



No. 69 29 Blocks

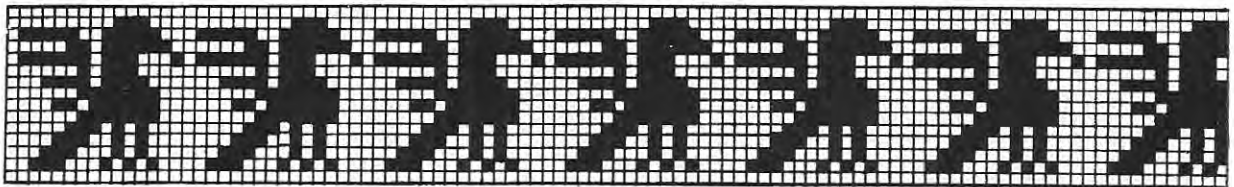


No. 70 71 Blocks



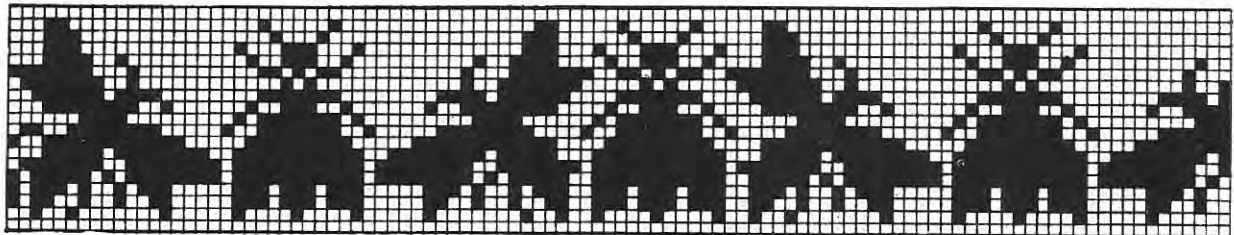
No. 71

(For diagrams see opposite page)



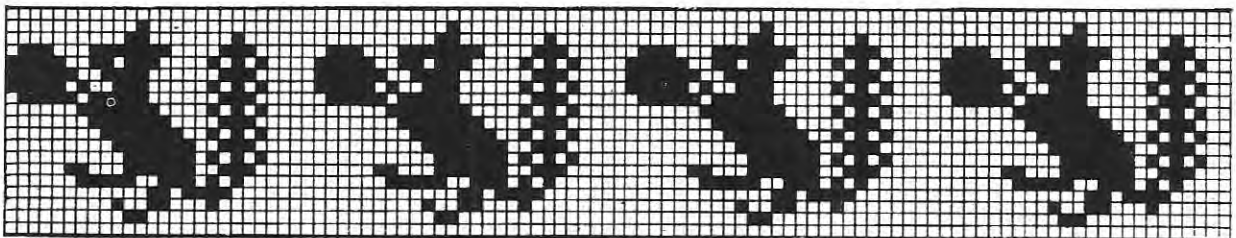
No. 72

15 Blocks



No. 73

19 Blocks



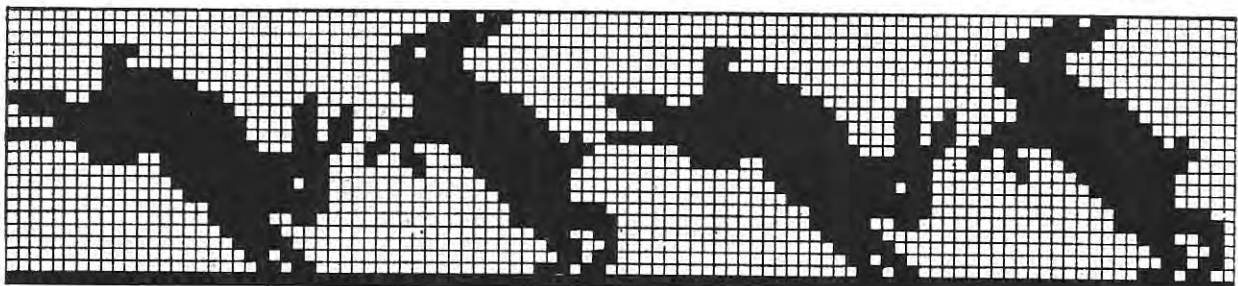
No. 74

19 Blocks



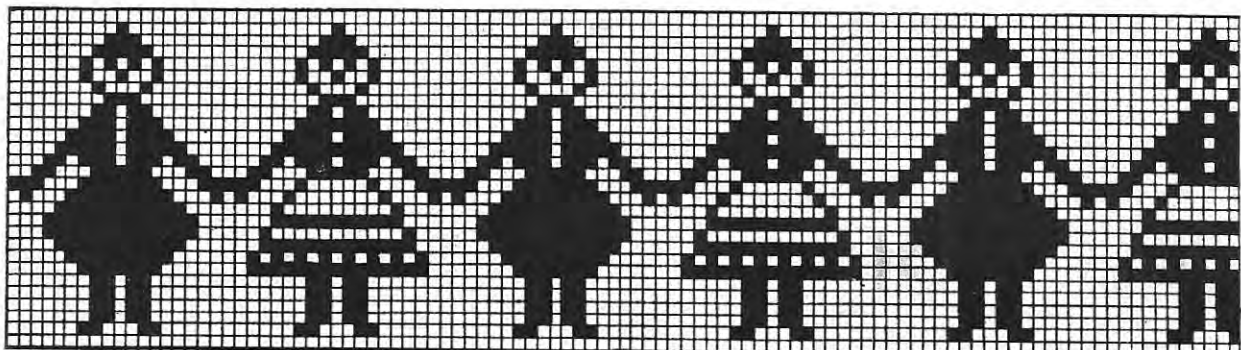
No. 75

21 Blocks



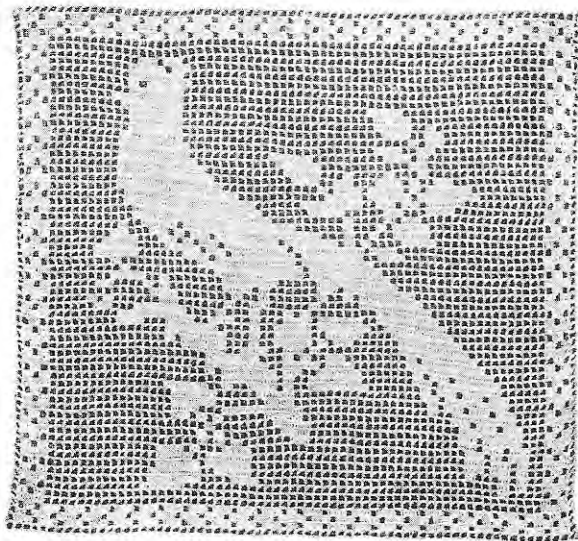
No. 76

23 Blocks

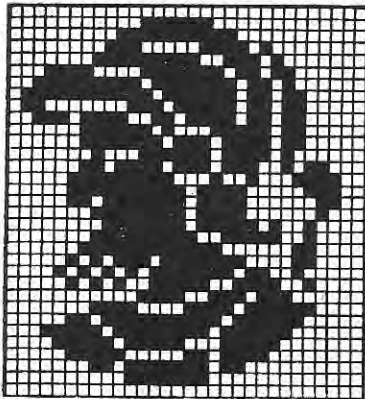


No. 77

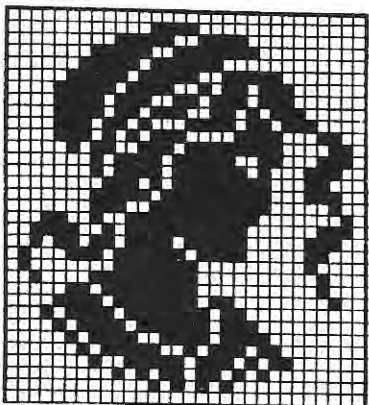
28 Blocks



No. 78



No. 79 30 x 33 Blocks



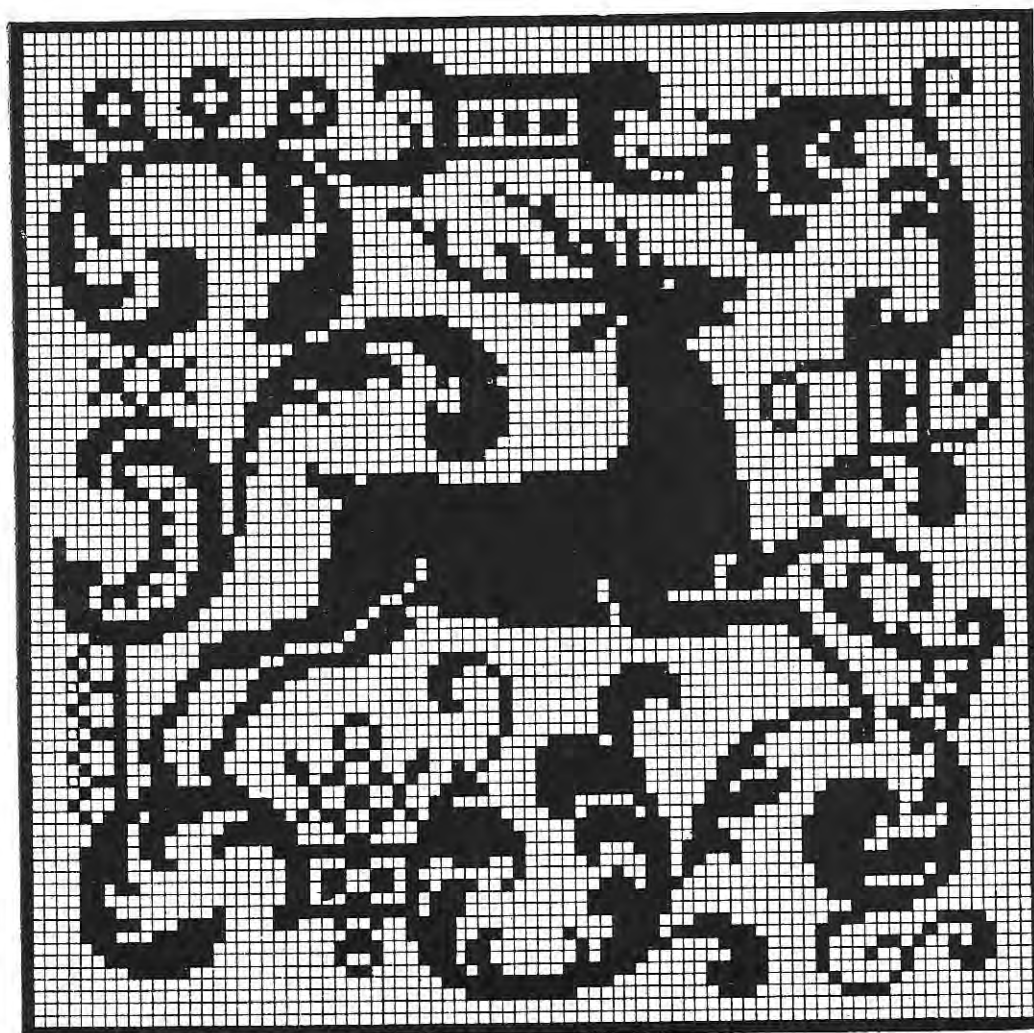
No. 80 30 x 33 Blocks



No. 81 69 Blocks

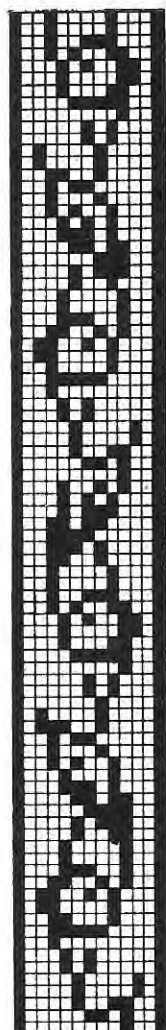


No. 82

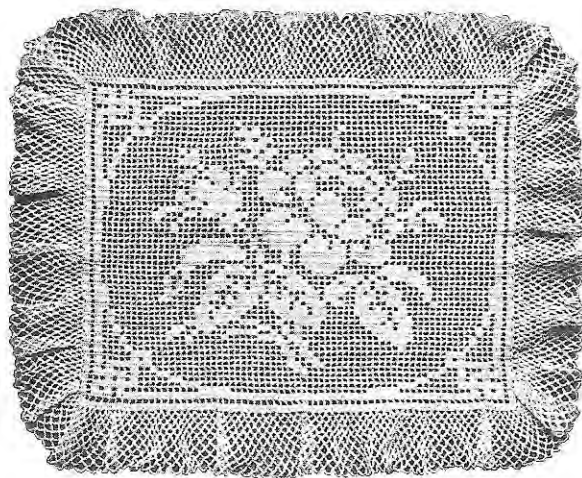


No. 83

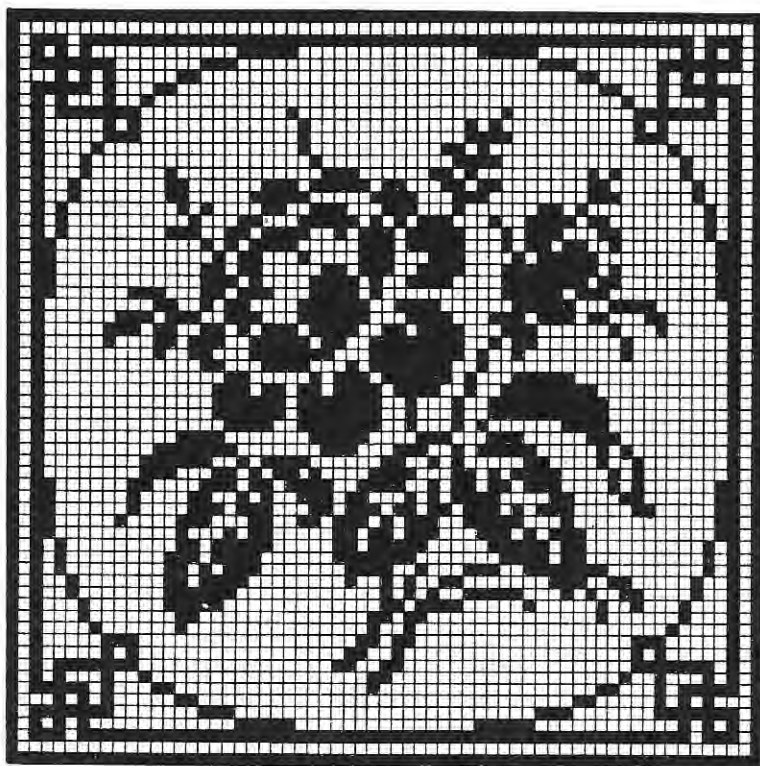
85 Blocks



No. 84
13 Blocks



No. 85



No. 86

63 Blocks

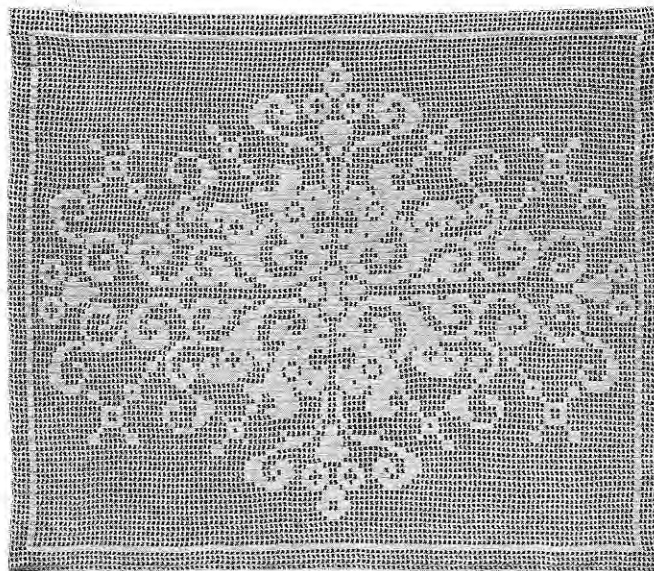


No. 87

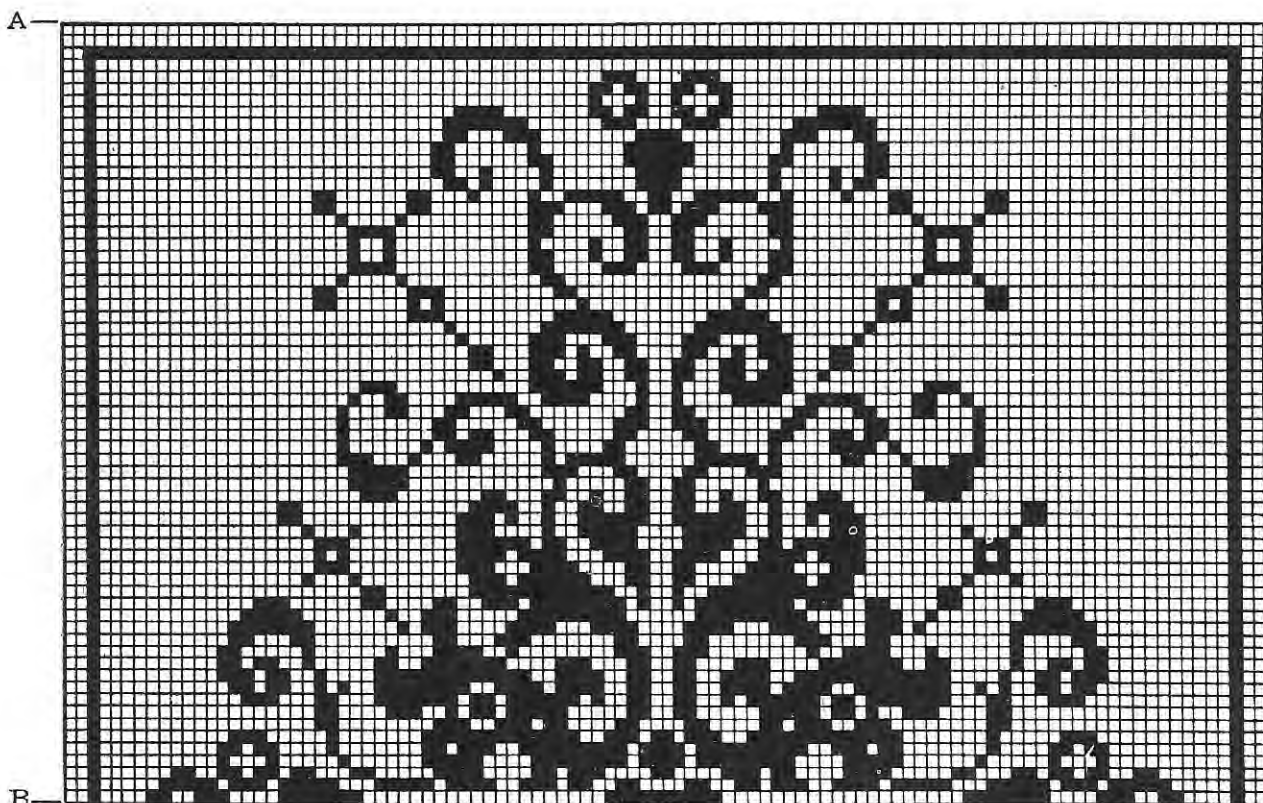
25 Blocks

No. 85. The old-fashioned tidy has come back to us. The lace edge on this model is easily made. For other styles look at Nos. 16, 55, 78, 95.

No. 87. An effective pattern for porch furnishings. The table scarf can be made of ecru, green, linen or brown cotton to the desired length and inserted between strips of denim, linen or burlap to match and both ends fringed. An insertion of this pattern through the middle of a pillow and each end fringed or finished with a crocheted edge will be extremely handsome.



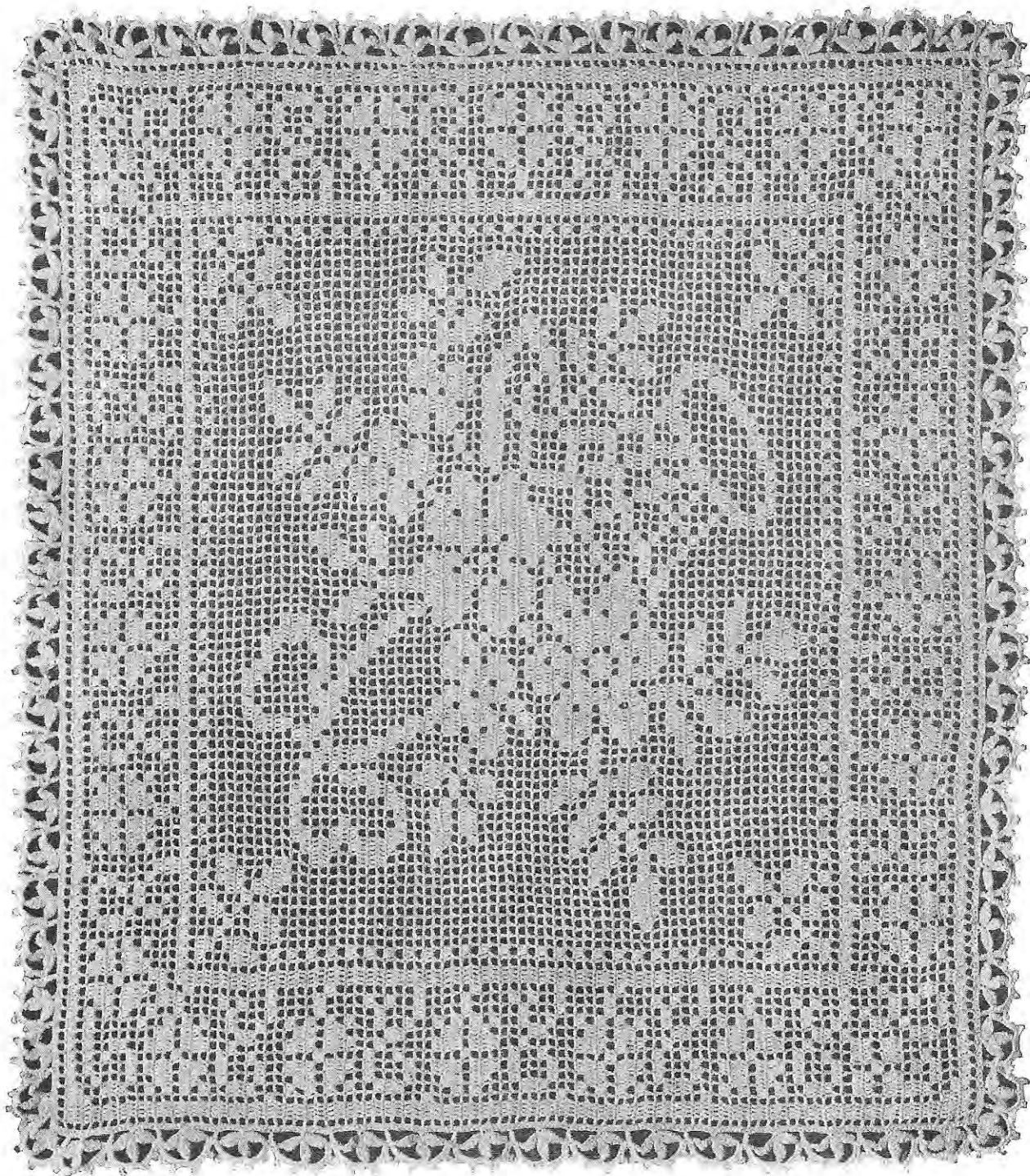
No. 88



No. 89

130 Blocks

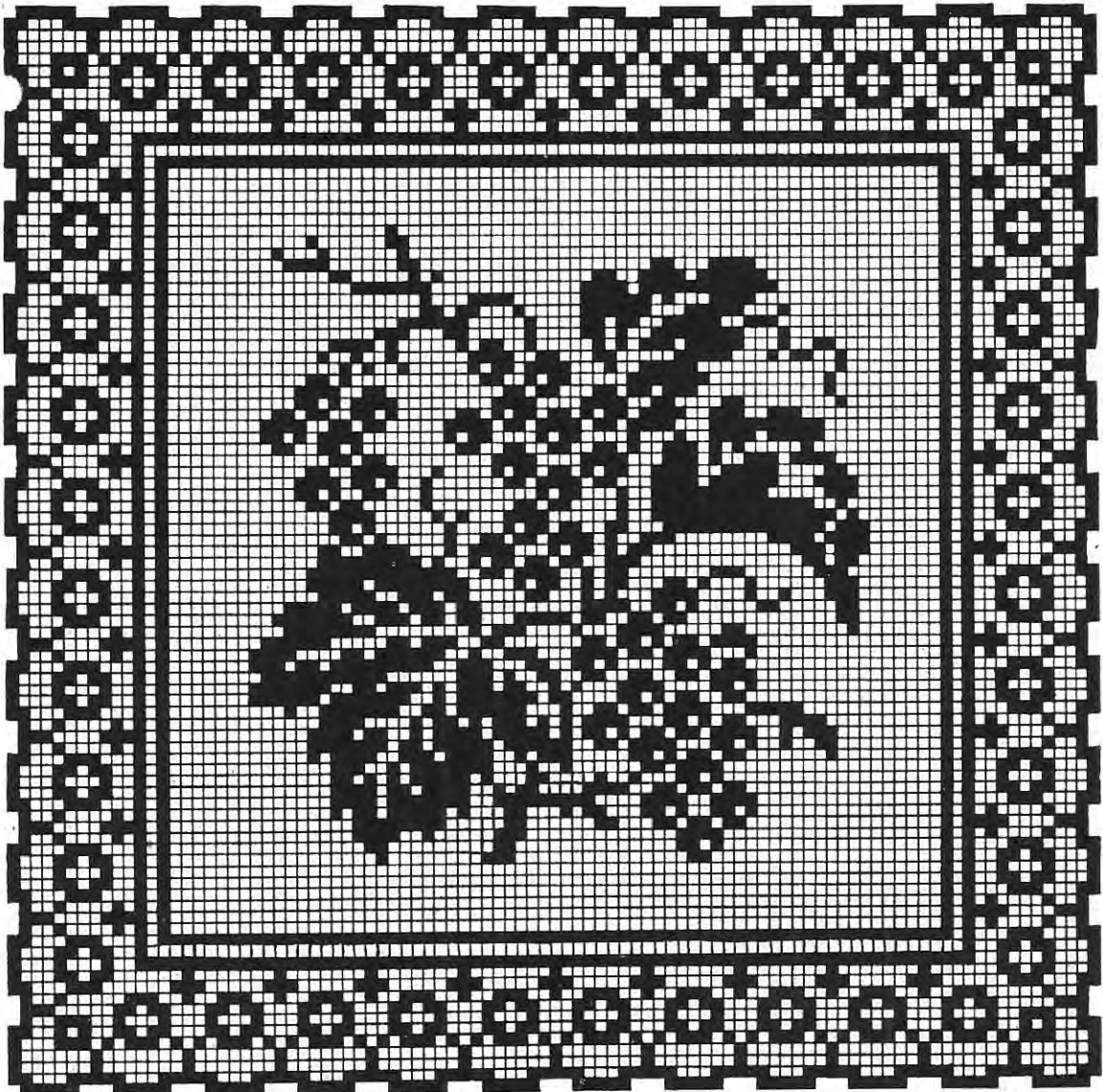
No. 89. A tray design which is begun at A and is 130 blocks long; from point B reverse the pattern, as only one-half is shown.



96 Blocks

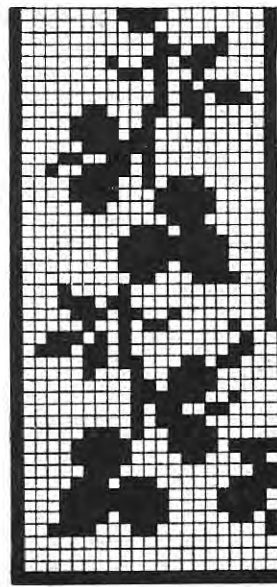
No. 90

No. 90. A beautiful table cover or tidy. A very handsome pillow top can be made of this, if No. 20 cotton is used. No. 17 or 96 with a border all around the pattern would make a striking panel or pillow top. Others are Nos. 16 and 88.

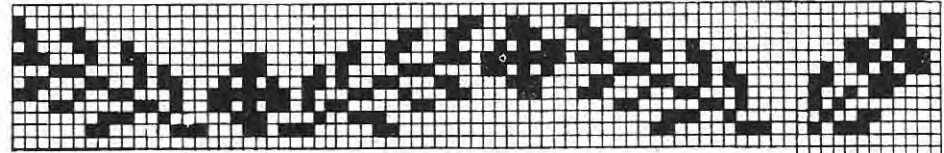


No. 91

95 Blocks

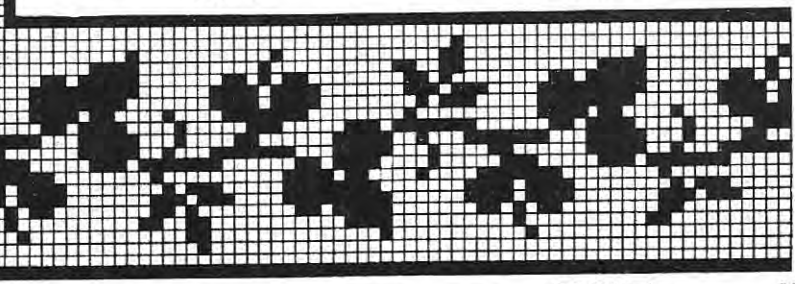
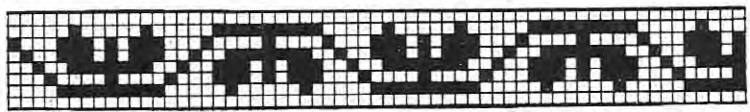


No. 93

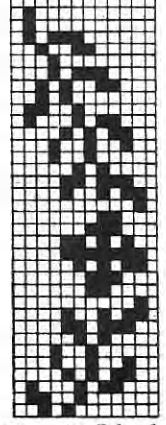


No. 92

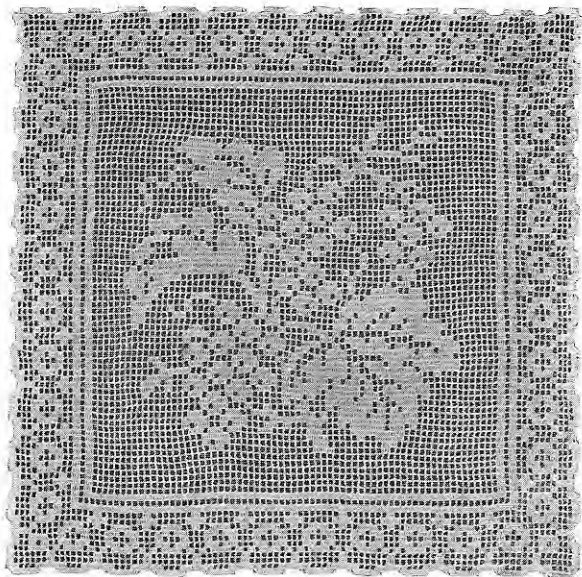
8 Blocks



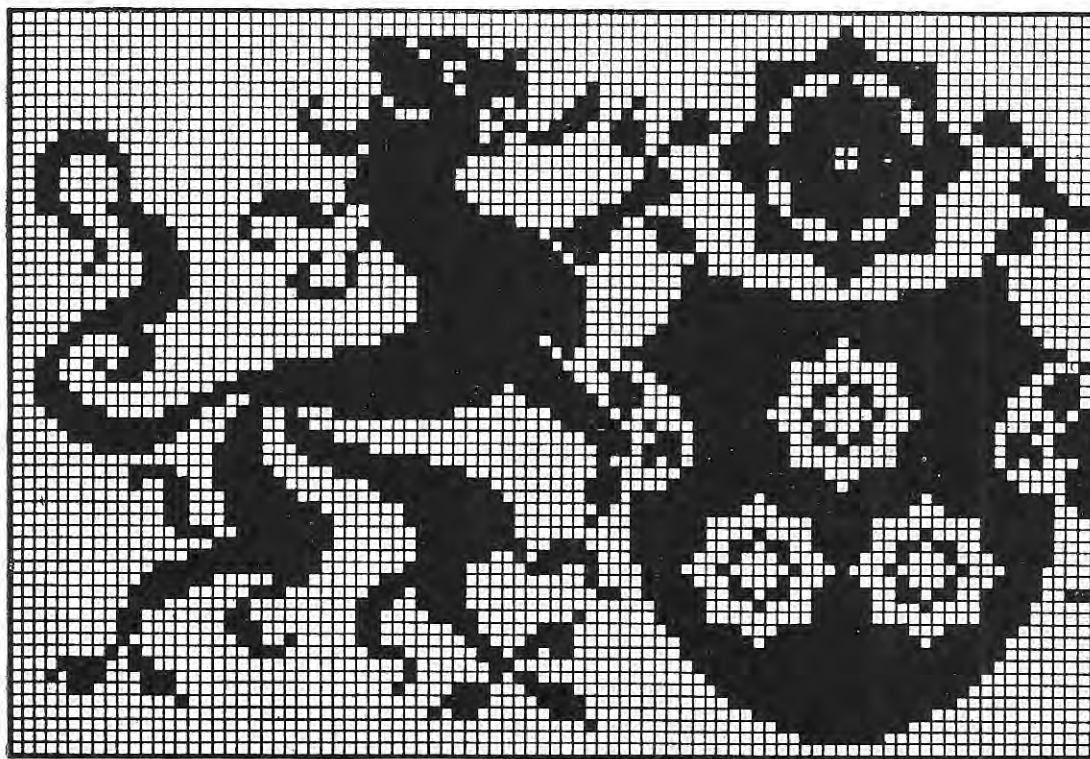
22 Blocks



No. 94 12 Blocks

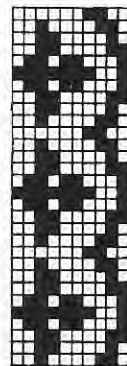
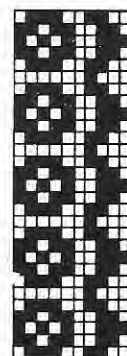


No. 95



No. 96

140 Blocks

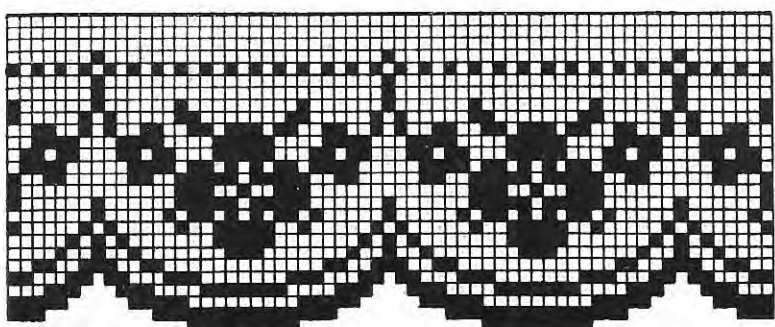


No. 97



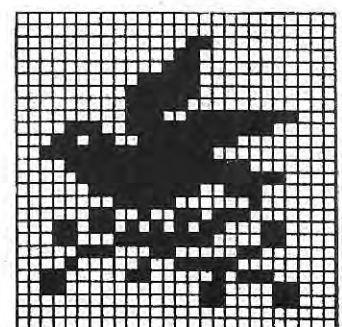
No. 98

12 Blocks



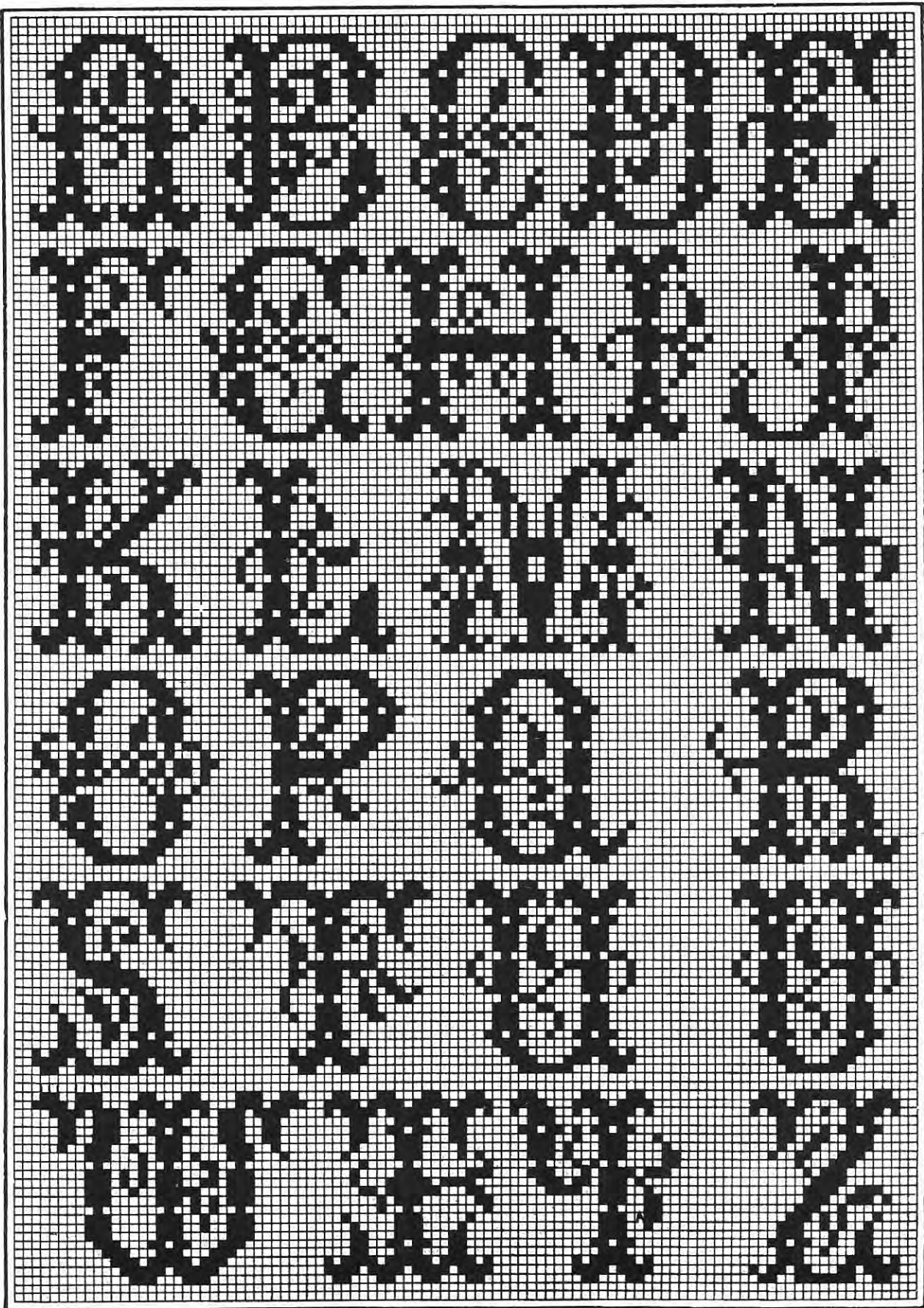
No. 99

26 Blocks



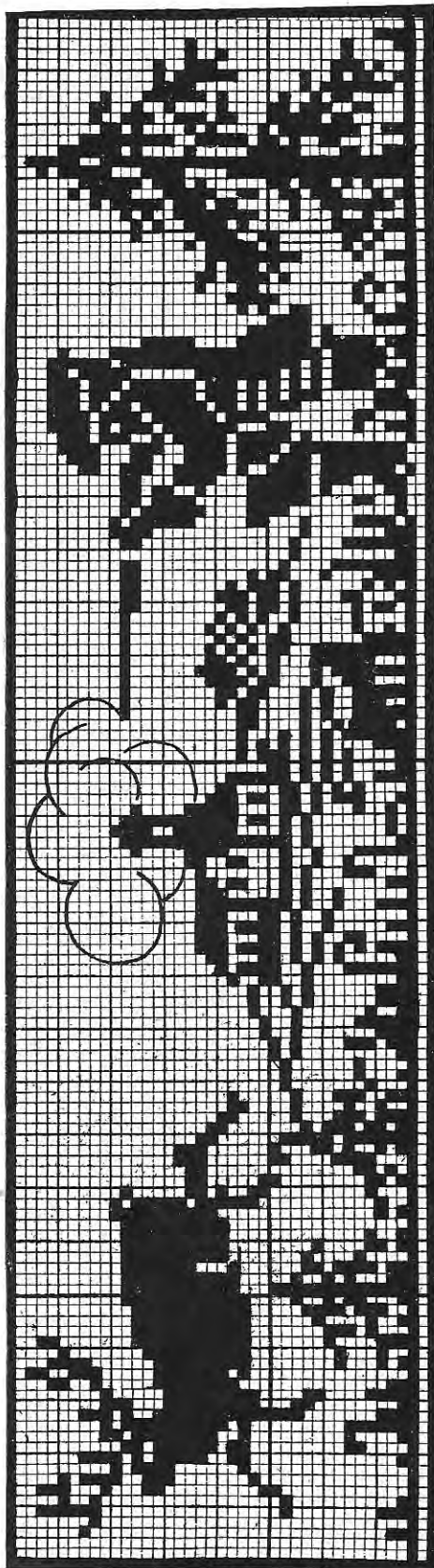
No. 100

26 Blocks



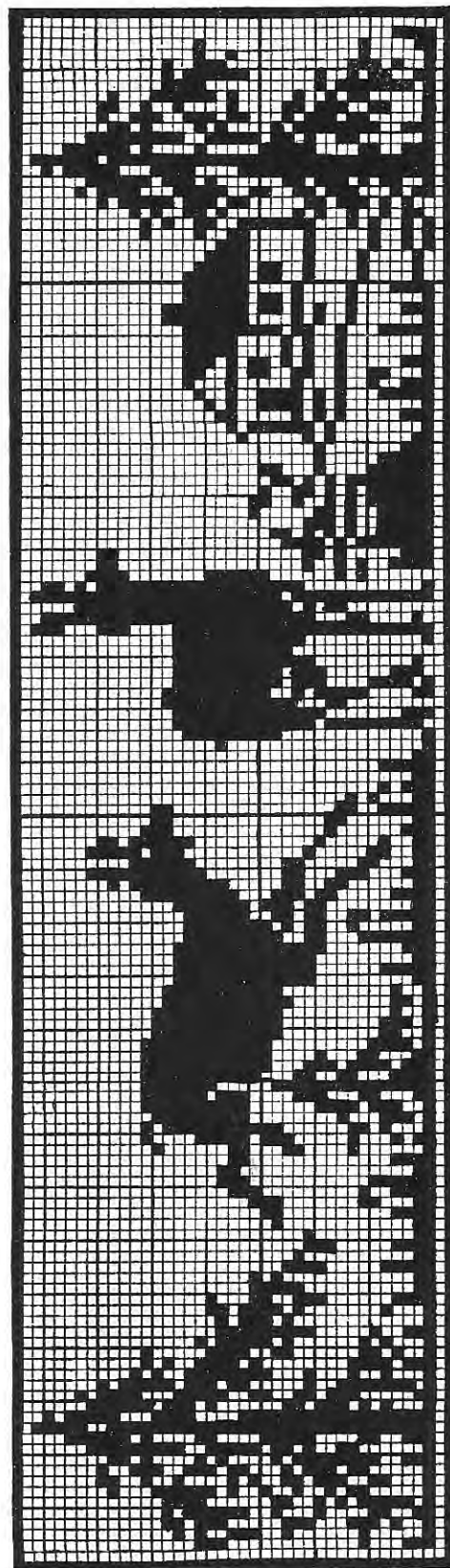
No. 101

22 Blocks



41 x 147 Blocks

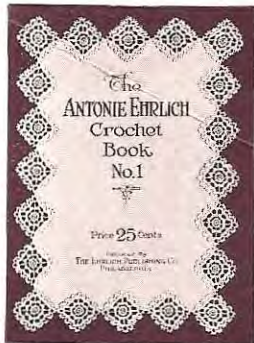
No. 102



41 x 147 Blocks

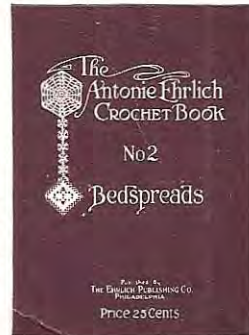
No. 103

ASK FOR THE ANTONIE EHRLICH CROCHET BOOKS



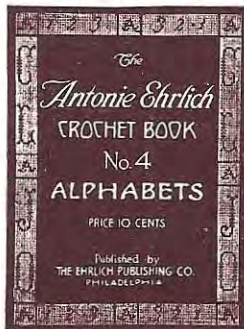
32 pages
Price
25 cents
By mail
28 cents

A comprehensive manual, containing illustrations and working directions for making pillows, scarfs, doylies, table mats, bedspreads, chairbacks, insertions, edgings, etc.



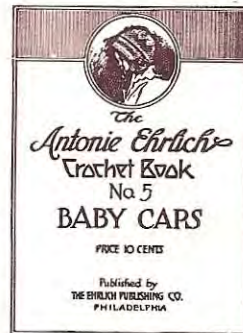
32 pages
Price
25 cents
By mail
28 cents

A book on bedspread patterns, insertions, laces, edgings, all-over patterns—knitted and crocheted.



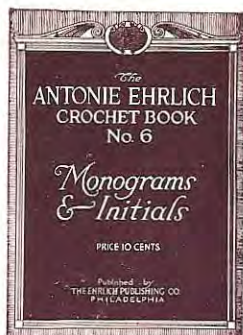
Price
10 cents
By mail
12 cents

A sixteen-page book of alphabets. A selection of various styles and sizes for Filet Crochet and Cross-stitch.



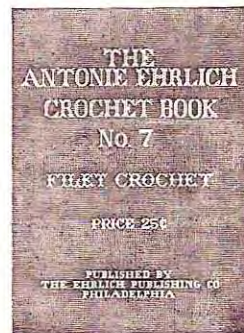
Price
10 cents
By mail
12 cents

A sixteen-page book on baby caps, containing new and original models of caps. Full working directions.



Price
10 cents
By mail
12 cents

Monograms and Initials for Filet Crochet and Cross-stitch. Sixteen pages.



32 pages
Price
25 cents
By mail
28 cents

Exclusively Filet Crochet. With No. 3 it forms the best collection of Filet Design yet published.

GET THEM FROM YOUR DEALER OR BY MAIL FROM US

THE EHRLICH PUBLISHING CO., 1211 ARCH STREET, PHILADELPHIA