

# MONOGRAMMBUCH

PRAKTISCHE MONOGRAMME

ZUM GEBRAUCHE FÜR

MALER, GRAVEURE, PAPIER- UND KARTONNAGENFABRIKANTEN  
BUCHBINDER, WAGENBAUER USW.

VON

**P. BÜTTGEN**

MALER IN BERLIN

DREISSIG TAFELN MIT SECHSHUNDERT MONOGRAMMEN

ZWEITE VERBESSERTE AUFLAGE



LEIPZIG 1905

VERLAG VON BERNH. FRIEDR. VOIGT

# MONOGRAMMBUCH

PRAKTISCHE MONOGRAMME

ZUM GEBRAUCHE FÜR

MALER, GRAVEURE, PAPIER- UND KARTONNAGENFABRIKANTEN  
BUCHBINDER, WAGENBAUER USW.

VON

P. BÜTTGEN

MALER IN BERLIN

DREISSIG TAFELN MIT SECHSHUNDERT MONOGRAMMEN

ZWEITE VERBESSERTE AUFLAGE



LEIPZIG 1905

VERLAG VON BERNH. FRIEDR. VOIGT

TAFEL I.  
AA—AK.



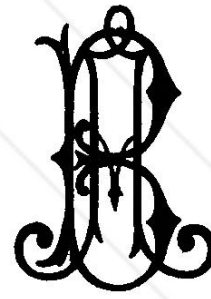
AA.



AA.



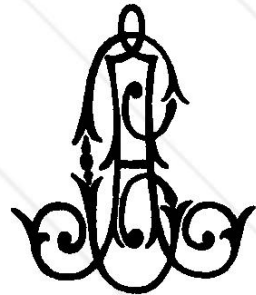
AB.



AB.



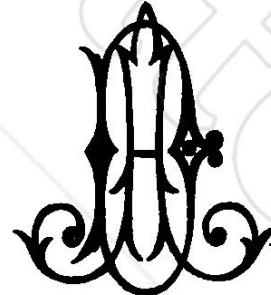
AC.



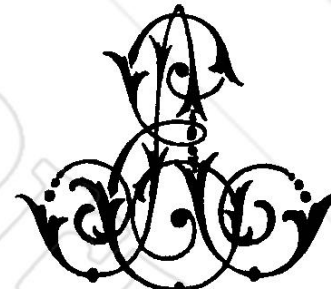
AC.



AD.



AD.



AE.



AE.



AF.



AF.



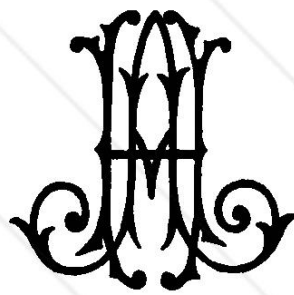
AG.



AG.



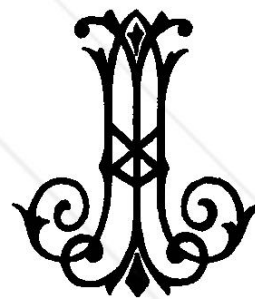
AH.



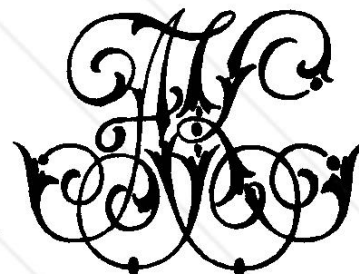
AH.



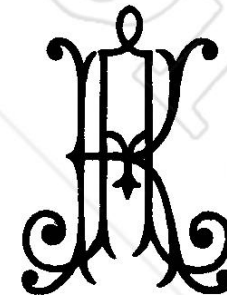
AI.



AI.

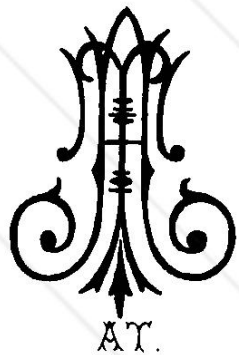
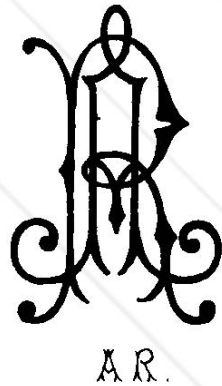
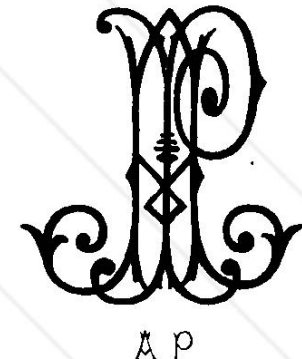
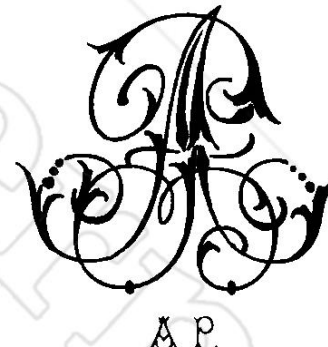
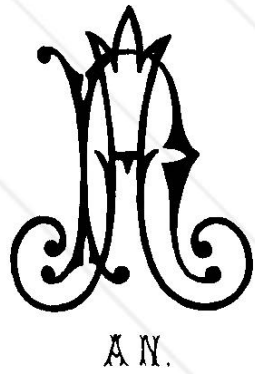
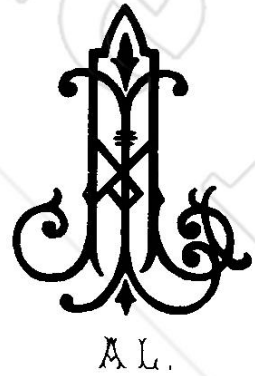


AK.



AK.

TAFEL II.  
AL—AV.





TAFEL IV.  
BH—BS.



B H.



B H.



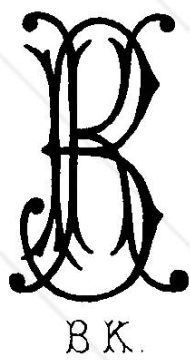
B I.



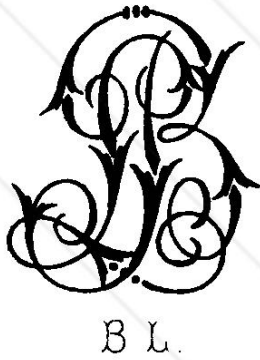
B I.



B K.



B K.



B L.



B L.



B M.



B M.



B N.



B N.



B O.



B O.



B P.



B P.



B R.



B R.



B S.



B S.

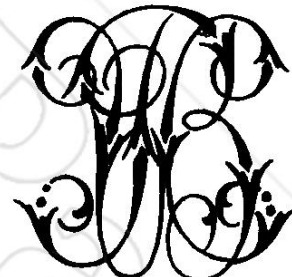
TAFEL V.  
BT—CE.



BT.



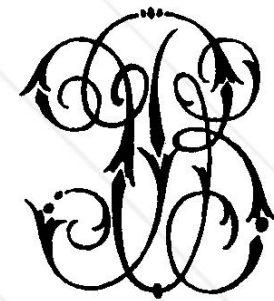
BT.



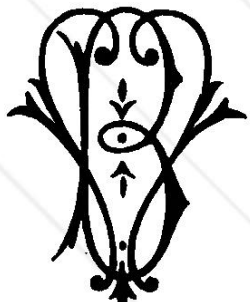
BU.



BU.



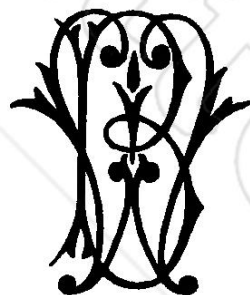
BV.



BV.



BW.



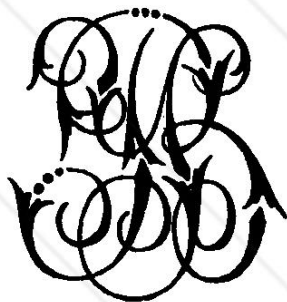
BW.



BX.



BX.



BY.



BY.



BZ.



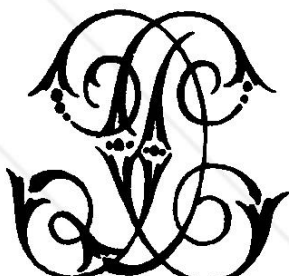
BZ.



CC.



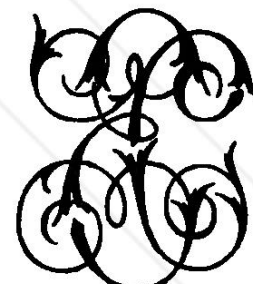
CC.



CD.



CD.



CE.



CE.

TAFEL VI.  
CF—CP.



CF.



CF.



CG.



CG.



CH.



CH.



CI.



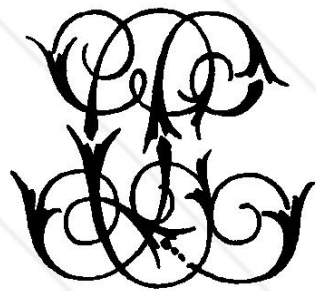
CI.



CK.



CK.



CL.



CL.



CM.



CM.



CN.



CN.



CO.



CO.



CP.



CP.



TAFEL VII.  
CR—DD.



CR.



CR.



CS.



CS.



CT.



CT.



CU.



CU.



CX.



CX.



CW.



CW.



CX.



CX.



CX.



CY.



CZ.



CZ.



DD.



DD.

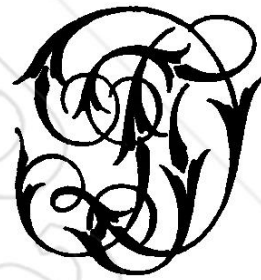
TAFEL VIII.  
DE—DO.



DE.



DE.



DF.



DF.



DG.



DG.



DH.



DH.



DI.



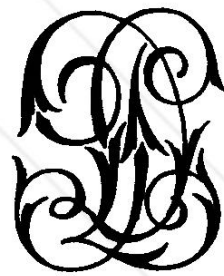
DI.



DK.



DK.



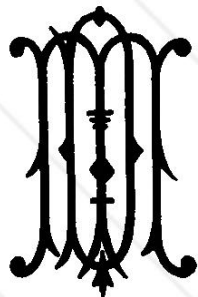
DL.



DL.



DM.



DM.



DN.



DN.



DO.



DO.

TAFEL IX.  
DP—DZ.



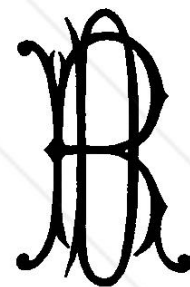
DP.



DP.



DR.



DR.



DS.



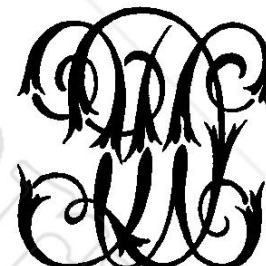
DS.



DT.



DT.



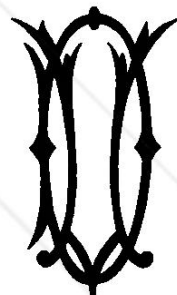
DU.



DU.



DY.



DY.



DW.



DW.



DX.



DX.



DY.



DY.

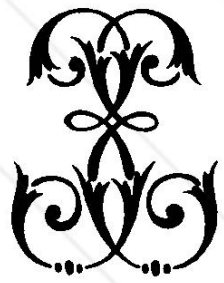


DZ.



DZ.

TAFEL X.  
EE—EO.



EE.



EE.



EF.



EF.



EG.



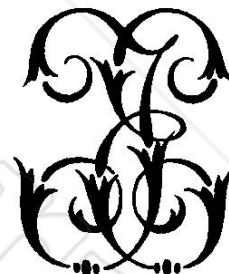
EG.



EH.



EH.



EI.



EI.



EK.



EK.



EL.



EL.



EM.



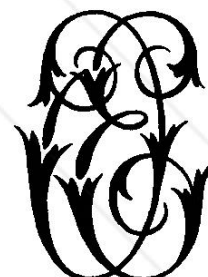
EM.



EN.



EN.

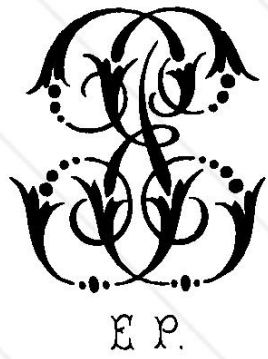


EO.



EO.

TAFEL XI.  
EP—EZ.



TAFEL XII.

FF—FP.



FF.



FF.



FG.



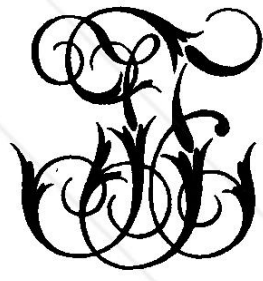
FG.



FH.



FH.



FI.



FI.



FK.



FK.



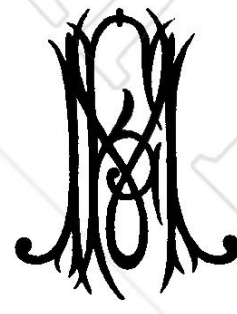
FL.



FL.



FM.



FM.



FN.



FN.



FO.



FO.



FP.



FP.

TAFEL XIII.

FR—GG,



FR.



FR.



FS.



FS.



FT.



FT.



FU.



FU.



FV.



FV.



FW.



FW.



FX.



FX.



FY.



FY.



FZ.



FZ.



GG.



GG.

TAFEL XIV.  
GH—GS.



GH.



GH.



GI.



GI.



GK.



GK.



GL.



GL.



GM.



GM.



GN.



GN.



GD.



GD.



GP.



GP.



GR.



GR.



GS.



GS.



TAFEL XV.

GT—HK.



GT.



GT.



GU.



GU.



GV.



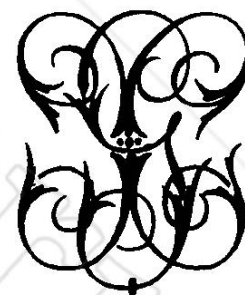
GV.



GW.



GW.



GX.



GX.



GY.



GY.



GZ.



GZ.



HH.



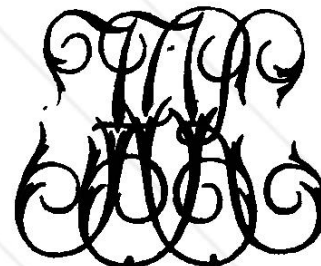
HH.



HI.



HI.



HK.



HK.

TAFEL XVI.  
HL—HV.



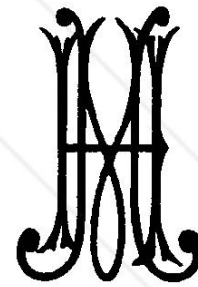
HL.



HL.



HM.



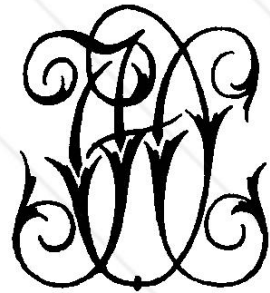
HM.



HN.



HN.



HO.



HO.



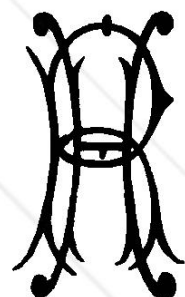
HP.



HP.



HR.



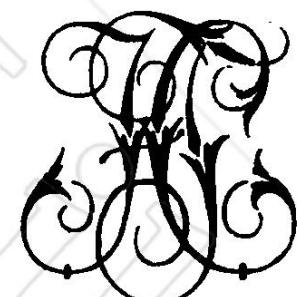
HR.



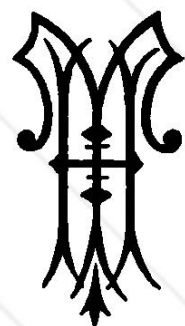
HS.



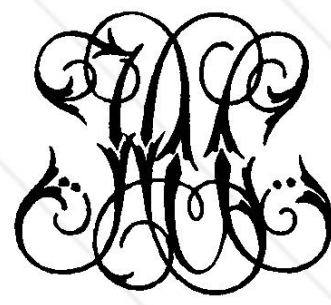
HS.



HT.



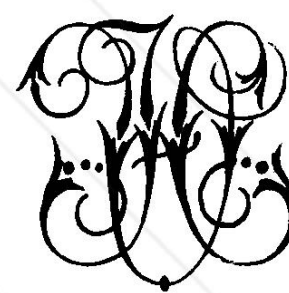
HT.



HU.



HU.



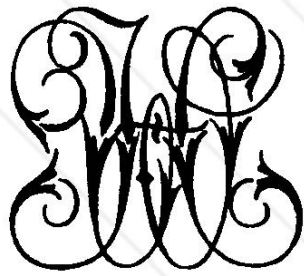
HV.



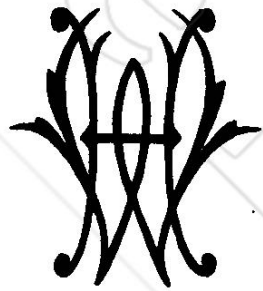
HV.

TAFEL XVII.

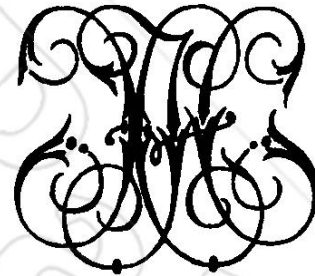
HW—JO.



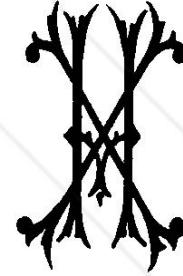
H W.



H W.



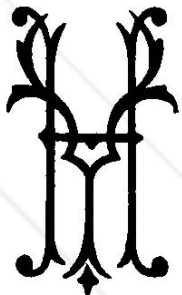
H X.



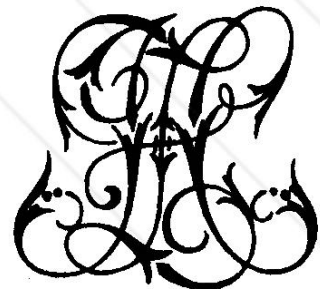
H X.



H Y.



H Y.



H Z.



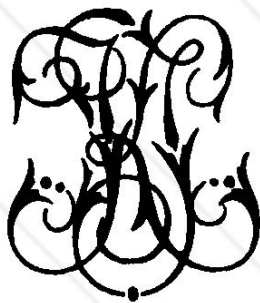
H Z.



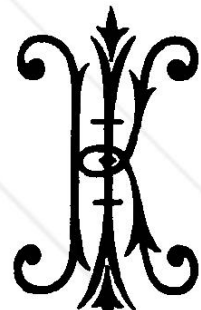
I I.



I I.



I K.



I K.



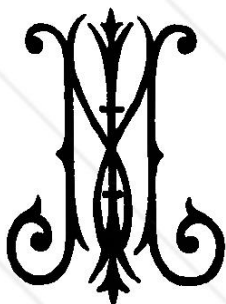
I L.



I L.



I M.



I M.



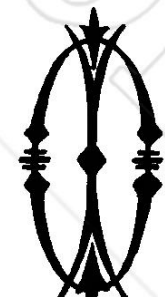
I N.



I N.



I O.



I O.

TAFEL XVIII.  
JP—JZ.



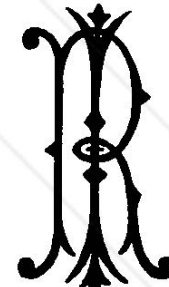
J P.



J P.



J R.



J R.



J S.



J S.



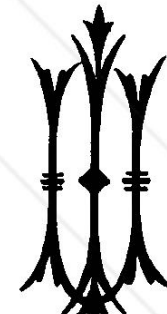
J T.



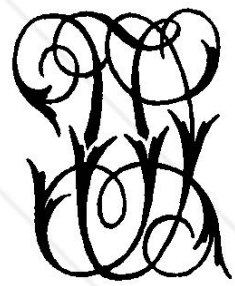
J T.



J U.



J U.



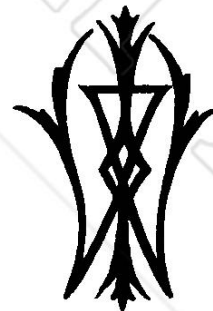
J V.



J V.



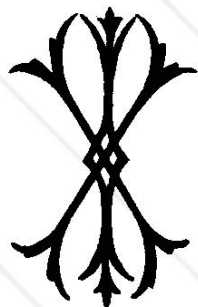
J W.



J W.



J X.



J X.



J Y.



J Y.



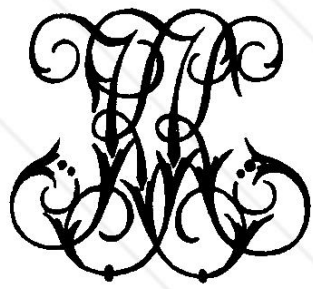
J Z.



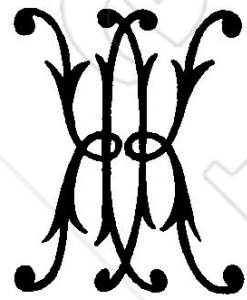
J Z.

TAFEL XIX.

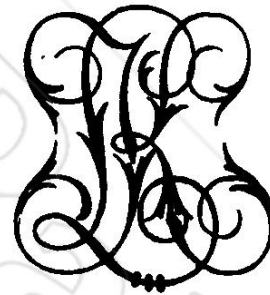
KK—KU



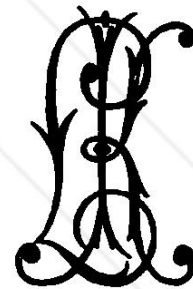
KK.



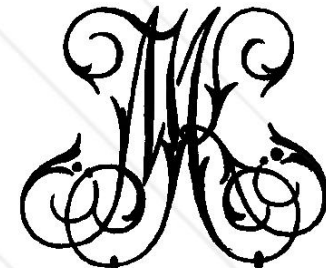
KK.



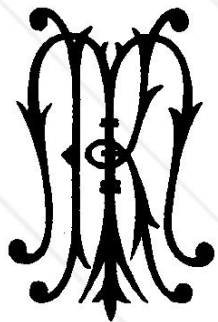
KL.



KL.



KM.



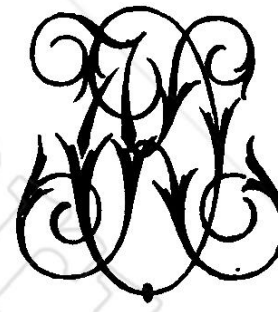
KM.



KN.



KN.



KO.



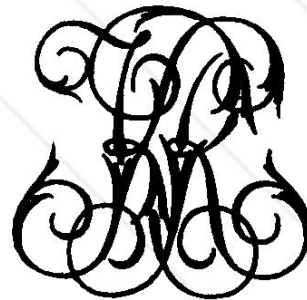
KO.



KP.



KP.



KR.



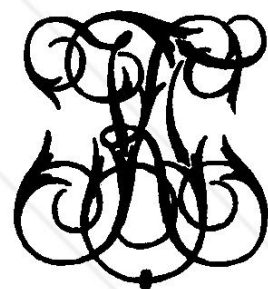
KR.



KS.



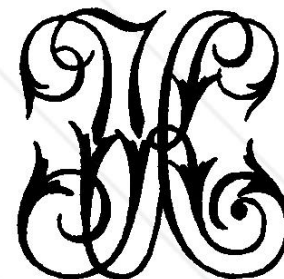
KS.



KT.



KT.



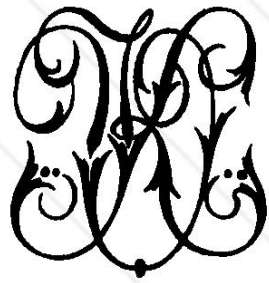
KU.



KU.

TAFEL XX.

KV-LP.



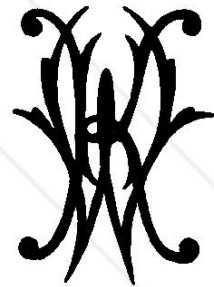
KV.



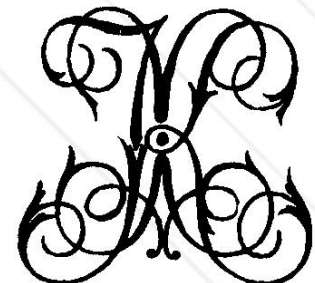
KV.



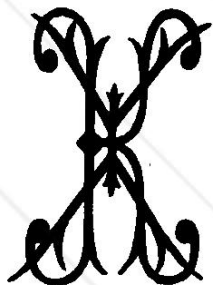
KW.



KW.



KX.



KX.



KY.



KY.



KZ.



KZ.



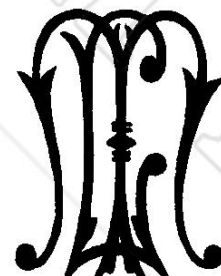
LL.



LL.



LM.



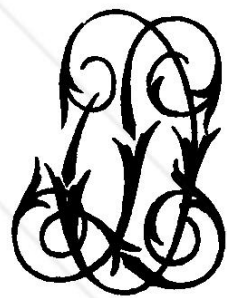
LM.



LN.



LN.



LO.



LO.



LP.



LP.

TAFEL XXI.

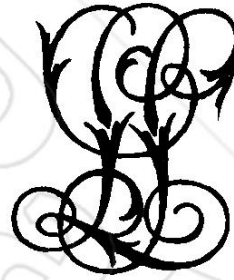
LR—MM



LR.



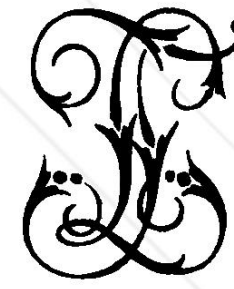
LR.



LS.



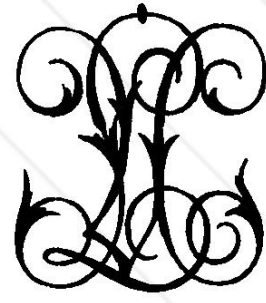
LS.



LT.



LU.



LU.



LV.



LV.



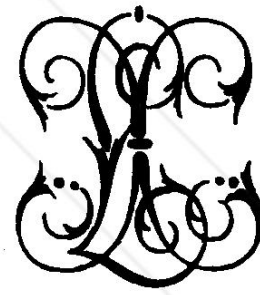
LV.



LW.



LW.



LX.



LX.



LY.



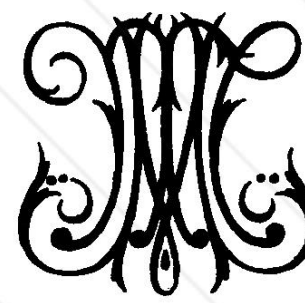
LY.



LZ.



LZ.



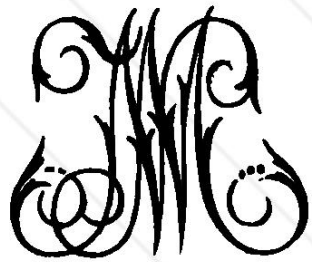
MM.



MM.

TAFEL XXII.

MN—MX.



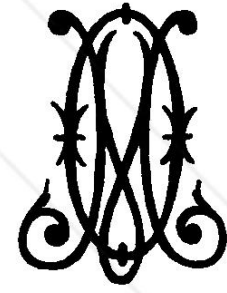
M N.



M N.



M O.



M O.



M P.



M P.



M R.



M R.



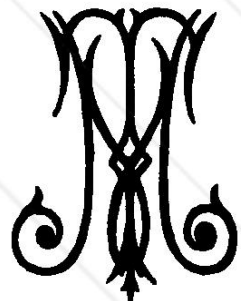
M S.



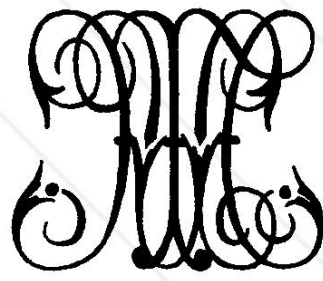
M S.



M T.



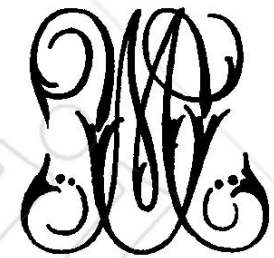
M T.



M U.



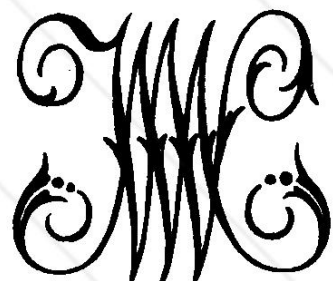
M U.



M V.



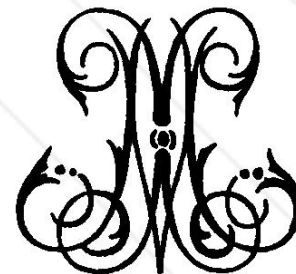
M V.



M W.



M W.



M X.



M X.



TAFEL XXIII

MV—NV.



M Y.



M Y.



M Z.



M Z.



N N.



N N.



N O.



N O.



N P.



N P.



N R.



N R.



N S.



N S.



N T.



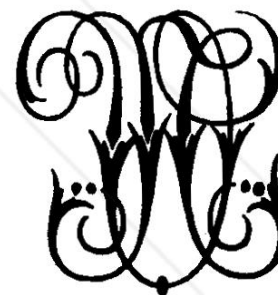
N T.



N U.



N U.



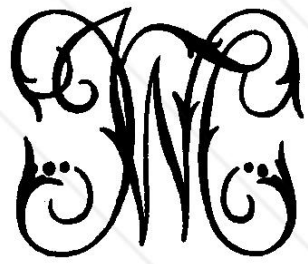
N V.



N V.

TAFEL XXIV.

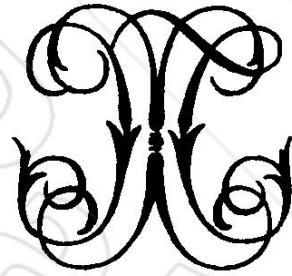
NW—OU.



NW.



NW.



NX.



NX.



NY.



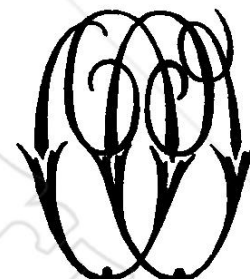
NY.



NZ.



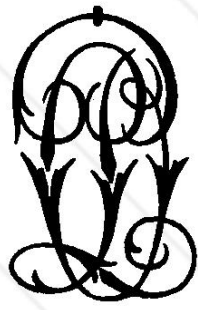
NZ.



OO.



OO.



OP.



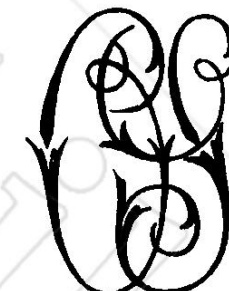
OP.



OR.



OR.



OS.



OS.



OT.



OT.



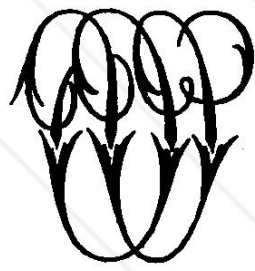
OU.



OU.

TAFEL XXV.

OV—PU.



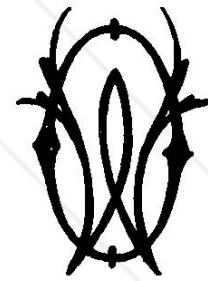
OV.



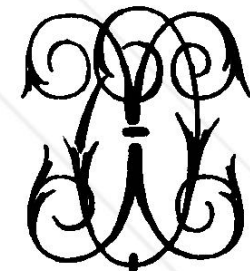
OV.



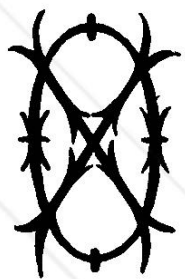
OW.



OW.



OX.



OX.



OY.



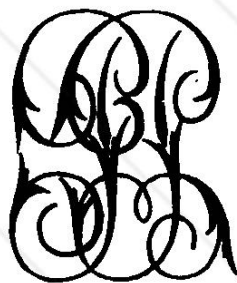
OY.



OZ.



OZ.



PP.



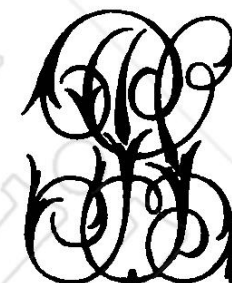
PP.



PR.



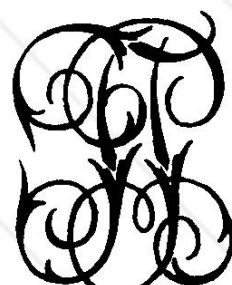
PR.



PS.



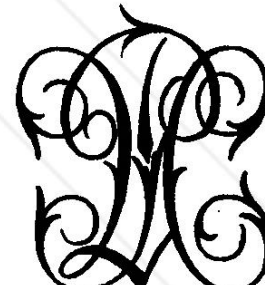
PS.



PT.



PT.



PU.



PU.

TAFEL XXVI.

PV—RV.



PV.



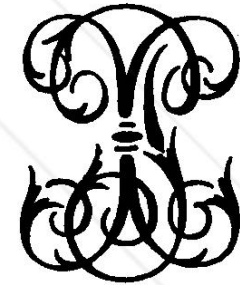
PV.



PW.



PW.



PX.



PX.



PY.



PY.



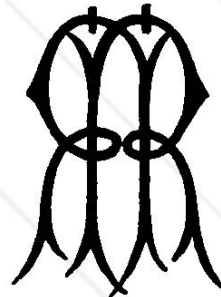
PZ.



PZ.



RR.



RR.



RS.



RS.



RT.



RT.



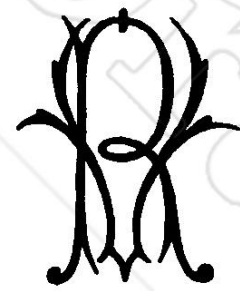
RU.



RU.



RV.



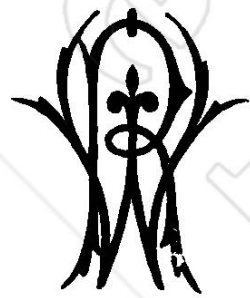
RV.

TAFEL XXVII.

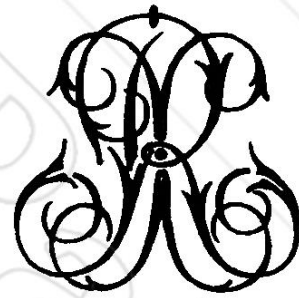
RW—SX.



RW.



RW.



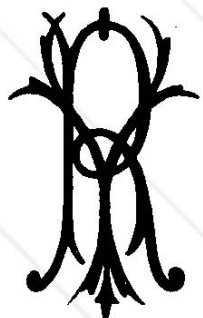
RX.



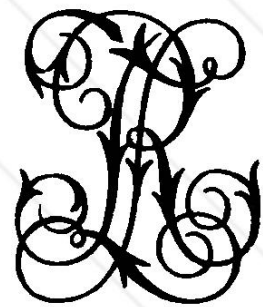
RX.



RY.



RY.



RZ.



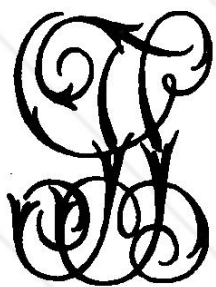
RZ.



SS.



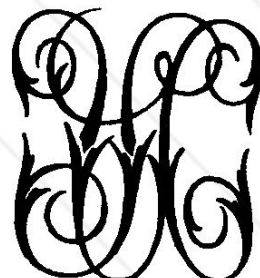
SS.



ST.



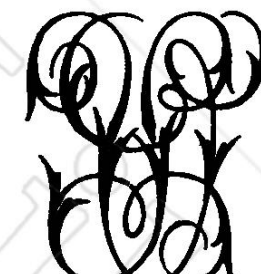
ST.



SU.



SU.



SV.



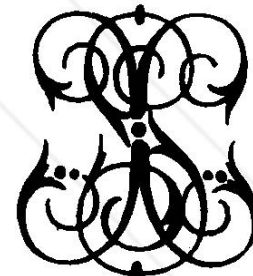
SV.



SW.



SW.



SX.



SX.

TAFEL XXVIII.

SV—UU.



SX.



SY.



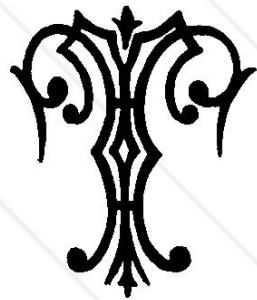
SZ.



SZ.



TT.



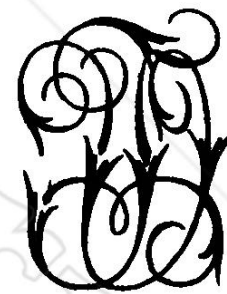
TT.



TU.



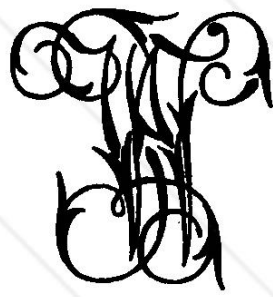
TU.



TV.



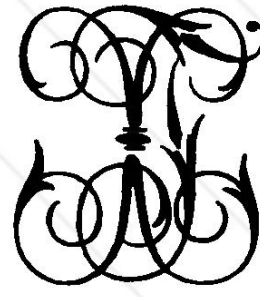
TV.



TW.



TW.



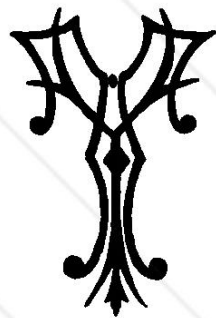
TX.



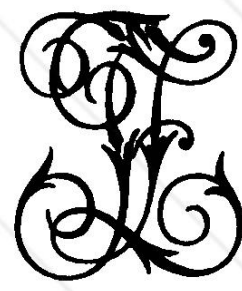
TX.



TX.



TY.



TZ.



TZ.



UU.



UU.

TAFEL XXIX.

UV—VZ.



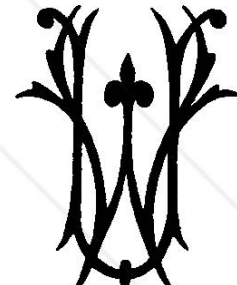
U V.



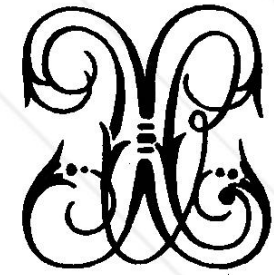
U V.



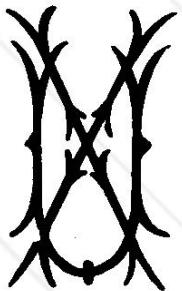
U W.



U W.



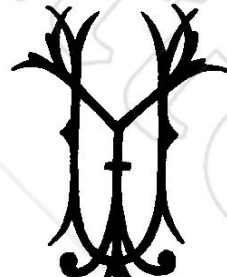
U X.



U X.



U Y.



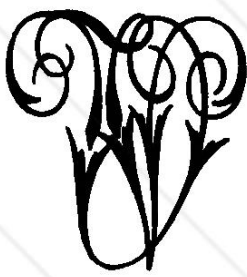
U Y.



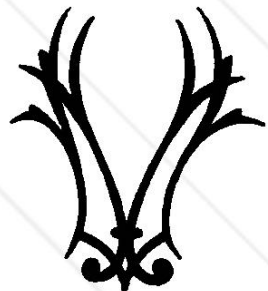
U Z.



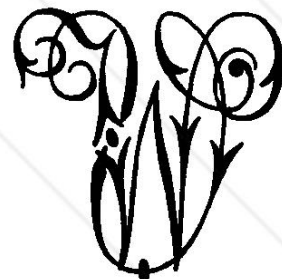
U Z.



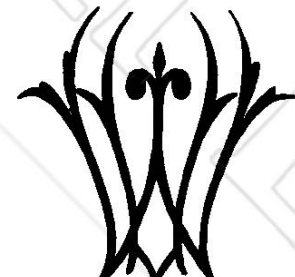
V V.



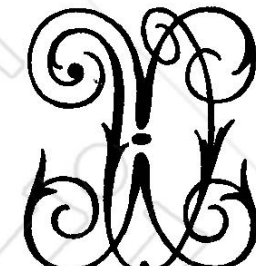
V V.



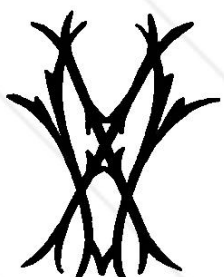
V W.



V W.



V X.



V X.



V Y.



V Y.



V Z.



V Z.

TAFEL XXX.

ww—zz.



ww.



ww.



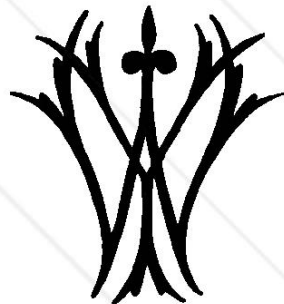
wx.



wx.



wy.



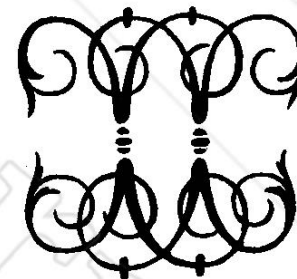
wy.



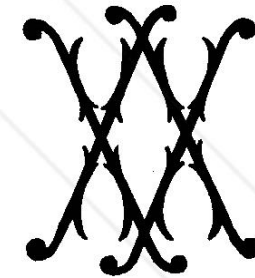
wz.



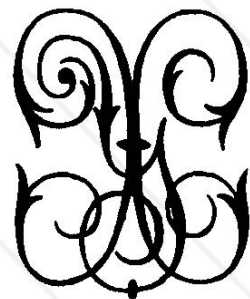
wz.



xx.



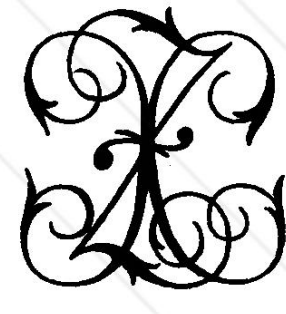
xx.



xy.



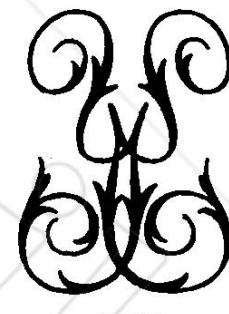
xy.



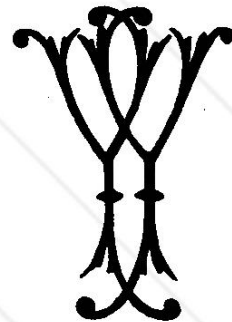
yz.



xz.



yy.



yy.



yz.



yz.



zz.



zz.



## Verlag von Bernh. Friedr. Voigt in Leipzig

- Burg, P. van der, Die Holz- und Marmormalerei.** Praktisches Handbuch für Dekorationsmaler, sowie zum Gebrauch in Fach-, Maler- und Kunstgewerbeschulen. Vierte verbesserte Auflage. Mit einem Atlas von 36 meist in Farbendruck ausgeführten Foliotafeln. gr. 8. Geh. 15 Mark.
- Creuzburg, H., Lehrbuch der Lackierkunst** sowie der Firnis- und Lackfabrikation. Elfte neubearbeitete Auflage. Mit 57 Abbildungen. gr. 8. Geh. 5 Mark. Geb. 6 Mark 50 Pfg.
- Eiserwag, A. und Lyongrün, A., Moderne Vorbilder für Decken- und Wandmalerei.** Eine Sammlung von farbigen Motiven zum Gebrauche für Dekorationsmaler, gewerbliche Zeichen- und Malerschulen. 26 Grossfoliotafeln und 1 Modellbogen nebst Text. In Mappe. 18 Mark.
- Grimm, R., Moderne Monogramme.** 28 Tafeln mit 420 Monogrammen. 4. Geh. 3 Mark.
- Hagdorn's, Chr., Anstreicher.** Ein Leitfaden für den Zimmer- und Dekorationsmaler usw. Sechste Auflage in vollständiger Neubearbeitung von Carl Ruck sen. Mit 28 Abbildungen. 8. Geh. 3 Mark.
- Händel, E., Vorlagen zu Deckenmalereien.** Flache und gewölbte Plafonds mit Einschluss einzelner zugehöriger Wanddekorationen in verschiedenen Stilen zu Zimmern, Sälen und Kirchen. Zweite Auflage von K. Schauptert. 28 Foliotafeln. Gross-Folio. Geh. 9 Mark.
- Händel, E., Schablonen in natürlicher Grösse** für Decken, Wände, Säulenschäfte usw. aus dem Ende des XV. und Anfang des XVI. Jahrhunderts, ausgeführt auf der königl. Albrechtsburg zu Meissen. 25 Tafeln, wobei eine Tafel in Farben ausgeführt. Zweite Auflage. In Mappe. 6 Mark.
- Küttner, C., 74 Blatt Monogramme, Zierschriften und Kronen.** Zweite Auflage. 4. Geh. 3 Mark.
- Lyongrün, A., Neue freie Dekorationsmotive,** entwickelt aus dem Tier- und Pflanzenreich. Eine Auswahl von Entwürfen im modernen Stil mit Rücksicht auf die praktische Verwendung im Kunstgewerbe. 20 Blatt in Farbendruck in grösstem Folioformat. In Mappe. 30 Mark.
- Lyongrün, A., Der moderne Stil.** Eine Sammlung naturalistischer Motive aus dem Tier- und Pflanzenleben. Bearbeitet mit Rücksicht auf die praktische Verwendung im Kunstgewerbe. 21 Grossfoliotafeln. In Mappe. 30 Mark.
- Reineck, Th., Verzierte farbige Alphabete.** Vorlagen für Firmenschreiber, Dekorationsmaler usw., sowie für das Studium der höheren Kalligraphie. 28 Grossfolio-Tafeln in Tondruck, enthaltend 30 farbig verzierte Alphabete. Dritte vermehrte Auflage. Gross-Folio. Geh. 10 Mark.
- Reineck, Th., Die gebräuchlichsten Firmenschriften in einfacher Ausführung.** Vorlagen für Firmenschreiber, Dekorations-, Glas- und Porzellanmaler. 28 Grossfolio-Tafeln, enthaltend 50 Alphabete. Dritte vermehrte Auflage. Gross-Folio. Geh. 8 Mark.
- Reineck, Th., Moderne Plakat- und Reklameschriften.** Vorlagen für Firmenschreiber, Dekorations-, Glas- und Porzellanmaler. 30 Foliotafeln in Schwarz- und Farbendruck. gr. 4. Geh. 6 Mark 75 Pfg.
- Reineck, Th., Moderne Schriften.** Vorlagen für Firmenschreiber, Dekorations-, Glas- und Porzellanmaler. 25 Foliotafeln in Farbendruck. gr. 4. Geh. 6 Mark.
- Reineck, Th., Vorlegeblätter für Firmenschreiber, Architekten usw.** 32 Grossfolio-Tafeln, enthaltend Vorlagen der gebräuchlichsten Schriftarten mit Hilfslinien, nebst den dazu gehörigen Zahlen, in 30 verschiedenen Alphabeten. Dritte vermehrte Auflage. Gross-Folio. Geh. 9 Mark.
- Reineck, Th., Zierschriften** in altdeutschem, Renaissance- und Barock-Stil. Vorlagen für Dekorations-, Glas- und Porzellanmaler, Firmen-, Diplom- und Plakatschreiber. 24 Gross-Foliotafeln mit 29 Alphabeten in meist farbiger Ausführung. Zweite Auflage. Geh. 9 Mark.
- Salow, R., Achtundvierzig Blatt Monogramme** mit alphabetisch geordnetem Verzeichnis. Zweite unveränderte Auflage. 48 Blatt in Farbendruck. Quer-Folio. Geh. 5 Mark.
- Schauptert, K., Gemalte Firmenschilder.** Eine Sammlung von Entwürfen zur Verzierung von auf den Hausgrund gemalten Firmenschildern nebst zwei Alphabeten verzierter Anfangsbuchstaben. Erste Folge. 20 Tafeln in Folio. Geh. 7 Mark.
- Schauptert, K., Plafondsdekorationen.** Entwürfe zur Verzierung der Decken von Zimmern und Sälen. Zweite Auflage. 30 Tafeln mit erläuterndem Text in Mappe. gr. 4. 7 Mark 50 Pfg. Hierzu: Details in natürlicher Grösse. 15 Bogen in Mappe. gr. 4. 5 Mark.
- Scheibe, E., Fünfzig Blatt Monogramme** zum Gebrauche für Graveure, Kupferstecher, Lithographen, Dekorationsmaler usw. Erste Folge. 50 Tafeln. Zweite Auflage. Geh. 3 Mark.
- Tormin, R., Handbuch für Dekorations- und Stubenmaler.** Zum Selbststudium und als Leitfaden für Fachschulen, herausgegeben von E. Ebelin, Dekorationsmaler. Achte Auflage von Tormin, Gehilfe für Haus- und Stubenmaler. Mit 37 Textabbildungen. gr. 8. Geh. 3 Mark 75 Pfg.