

The



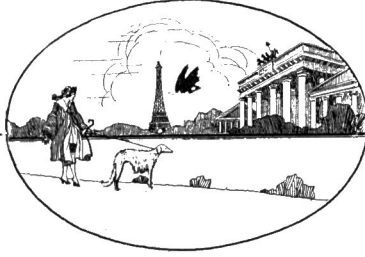
Book



How to Make the New  
BEADED BAGS  
and CHAINS

Price 10c

Edition No. VII



A Charming Collection  
of  
M O D E R N  
Beaded Bags

Combining simplicity of Design,  
with smart and refined appearance.

Complete and simple  
directions for making with  
photographs and charts.

COPYRIGHT 1924 by

DRITZ-TRAUM CO.  
258 FIFTH AVENUE, NEW YORK, N. Y.

SOLE  
DISTRIBUTORS  
OF



BEADS  
BAG FRAMES  
NOVELTIES

# FOREWORD



**I**T is not at all surprising that the vogue of making beaded bags is so great, when one can realize the possibility of creating things of exquisite beauty with a few beads and some silk thread.

The art of making beaded bags until recently, was a complicated and tedious task, attempted only by the early American Indians in this country, and the mountain peasants of the old world, who from childhood were trained by their parents and grandparents.

With this little book as a guide it is merely a pleasant divergence to blend sparkling beads with silk, and also enables one to possess that beautiful adjunct that is so necessary to complete Milady's costume.

In order to obtain the proper results, care should be used in selecting beads. They should be of enduring color and lustre, properly cut, uniform in size and quality. "Hiawatha" beads are selected for these requisites and are therefore recommended. "Hiawatha" bag frames and bag cords are also made of the finest materials obtainable and give absolute satisfaction.

**Colors:**—The selection of colors is an important consideration, and by following these suggestions satisfactory results will be obtained.

**Self Colors:**—In this group it is merely necessary to match the beads with the thread used, viz.—black with black, blue with blue, red with red, etc., etc.

**Contrasting Colors:**—In making a bag of contrasting shades, opaque beads should be used. Black or Navy thread combined with steel beads always effects a pleasing contrast. Here is recommended the new "Hiawatha Platinum" steel plated beads, which with ordinary care will not tarnish. Black thread combined with red or white beads or vice-versa, grey with jet, etc., produce proper contrasting effects.

**Blended Colors:**—This group affords the opportunity of producing individuality. Silk thread being opaque, transparent beads should be used so that the color of the beads will absorb the color of the thread and blend together. Light amber colored beads combined with brown thread will produce a shade in between the two. Purple beads combined with violet thread, light and medium blue beads with grey or other shades of blue thread, etc., always blend well.

There are several kinds of beads amongst the "Hiawatha" collection, the colors which are difficult to describe. They are known as gold iridescent lustres and transparent iridescent beads. Radiant shades, such as golden brown, jade green, violet, etc., are blended with tints of translucent gold in the same bead. These truly make gorgeous bags.



ABBREVIATIONS USED IN THIS BOOK

B.....Bead or Beads		P.H.S.....Plain Half Stitch
CH.....Chain		PL.....Plain
Cr.....Crochet		R.....Ridge
H. St.....Half Stitch		SLD.....Slide
K.....Knit		ST.....Stitch
L.....Line		

**“THE WELLESLEY” No. 116**

**Materials:** 20 Bchs. “Hiawatha” cut beads 9/0.  
 2 spools purse twist  
 1 Pair “Hiawatha” knitting pins size 17.  
 1 Pair “Hiawatha” knitting pin protectors.  
 1 “Hiawatha” drawstring cord No. 725.

This model made with black purse twist and crystal gems No. 21/9 looks particularly well.

**Size of Bag:** Width 5½ inches—length 6½ inches.

This bag is made in 7 vertical patterns of bead slides in diamond shapes and graduated stripes with plain knitting between the patterns as follows:

Cast on 63 St.—K. 1 R. (ridge) Pl. K. 8 R. with 1 B. in each St., always coming back with Pl. St. (No beads) on inside of bag.

10th R. K. 1 Pl. K. 2 B. K. 1 Pl. Slide Pattern 1 (see table below).

K. 1 Pl. K. 2 B. \* K. 2 Pl. K. 2 B. K. 1 Pl. Slide Pattern 2 (starting diamond).

K. 1 Pl. K. 2 B. K. 2 Pl. K. 2 B. K. 1 Pl. Slide Pattern 3. K. 1 Pl. K. 2 B. \*. Repeat from \* to \* 2 more times and finish with 1 Pl. St.

**Note:** When knitting back on inside of bag to complete the ridge, always knit plain except when sliding beads.

Note that balance of bag is made exactly as the 10th ridge with the execution of the patterns which are made in the following manner:

**Vertical Patterns 2-4-6 are for Diamond Shapes.**

** On	1st R.—	Slide 1 B.
“	2nd R.—	“ 2 B.
“	3rd R.—	“ 3 B.
“	4th R.—	“ 4 B.
“	5th R.—	“ 5 B.
“	6th R.—	“ 6 B.
“	7th R.—	“ 7 B.
“	8th R.—	“ 8 B.
“	9th R.—	“ 8 B.
“	10th R.—	“ 8 B.
“	11th R.—	“ 7 B.
“	12th R.—	“ 6 B.
“	13th R.—	“ 5 B.
“	14th R.—	“ 4 B.
“	15th R.—	“ 3 B.
“	16th R.—	“ 2 B.
“	17th R.—	“ 1 B.**

This completes 1 full diamond. Repeat from \*\* to \*\* until 9 diamonds are finished.

**Note:** Slides No. 2-4-6 are exactly the same.

**Vertical Patterns 1-3-5-7 are for Graduated Stripes**

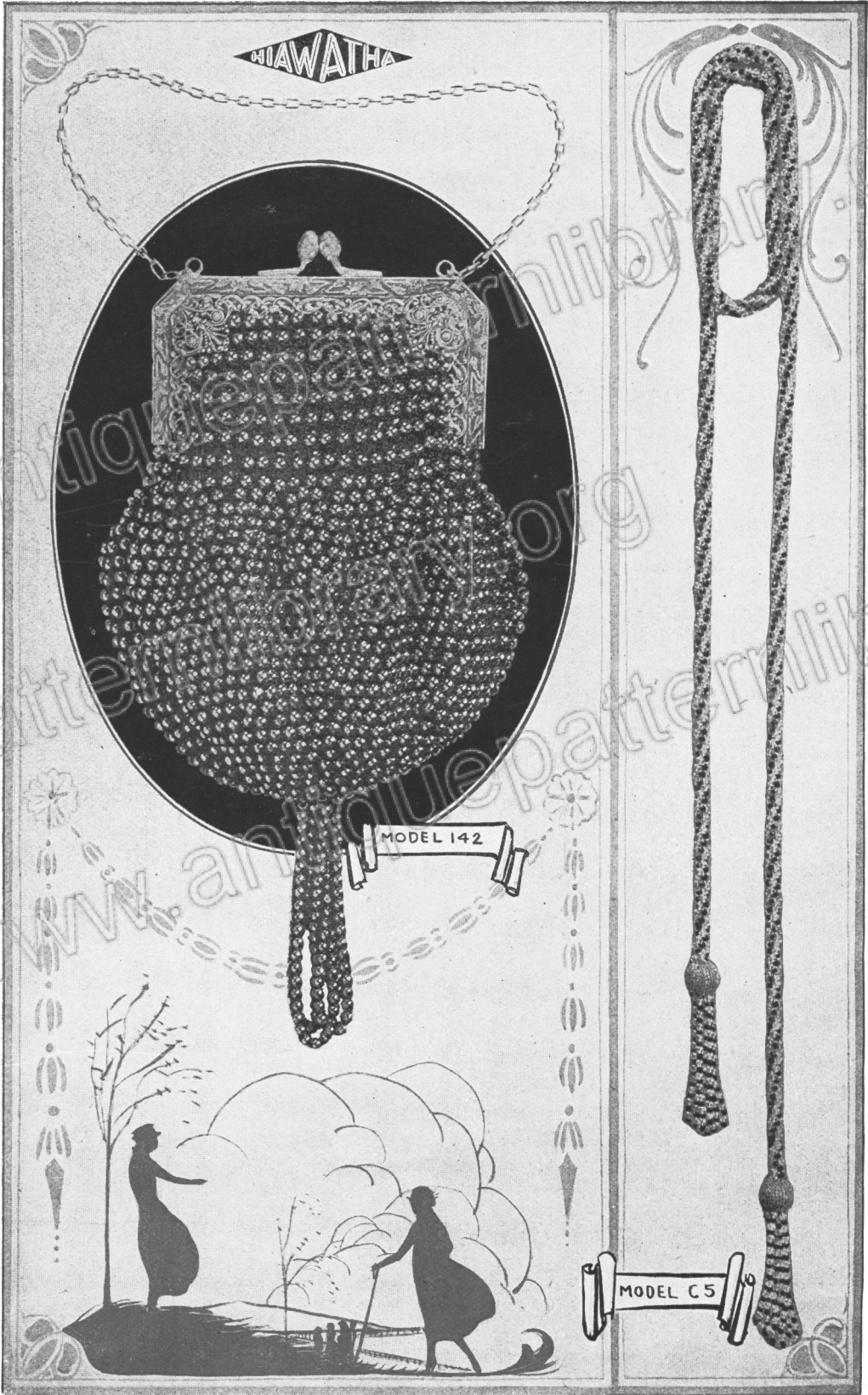
***On	1st to 9th R.—	Slide 2 B.
“	10th to 20th R.—	“ 3 B.
“	21st to 31st R.—	“ 4 B.
“	32nd to 44th R.—	“ 5 B.
“	45th to 57th R.—	“ 6 B.
“	58th to 68th R.—	“ 7 B.
“	69th to 80th R.—	“ 8 B.***

This completes the graduated stripe for ½ the bag. Repeat from \*\*\* to \*\*\* in reverse order for the other half of bag.

**Note:** Slides No. 1-3-5-7 are exactly the same.

**Tabs:** Cast on 9 St. \* K. 1 Pl. K. 7 B. K 1 Pl. coming back with a line of plain in the back \*. Repeat from \* to \* until tab measures 2 inches. Make 8 tabs. Attach tabs to bag, 4 on each side, leaving 1 end loose on each.

**Lining & Mounting:** Sew up sides of bag. Line bag with piece of silk and attach drawstring cord, and sew up loose ends of tabs. Then sew 4 loops 3 inches long on each side at top of bag.



## "THE SILVER-GLO" No. 142

**Materials:** 4 Bchs. "Hiawatha" Silver-Glo Gems No. 3117.  
1 spool Purse twist.  
1 "Hiawatha" steel crochet hook No. 9.  
1 "Hiawatha" Filigree Frame No. 5888/4.

Silver-Glo Gems come in a large variety of colors that can be blended into the most beautiful shades.

**Size of Bag:** Width at top 4 inches—Bottom  $5\frac{1}{4}$  inches—Length  $6\frac{1}{4}$  inches.

Pattern stitch used throughout the bag (3 chain, 1 B. 1 H. St.)

Chain 8 and join to form a ring. Fill in with 28 P. H. S. Then Cr. 3 chain St. with 1 B. in every other H. St.

Continue working around circle increasing 7 B. in each row for 22 rows, keeping the work flat and even.

**Top:—23rd row:** Continue without any increase, gathering in the previous row evenly and carefully. Decrease the bag gradually in the next 2 rows until the circumference measures 11 inches.

**26th row:** Work one-half of the circle (22 beads) then turn bag and make 1 row of Pl. St. (3 chain), turn again and make 1 row with B. Continue alternating 1 row Pl. and 1 row of B. decreasing 1 St. at each end. Make about 6 rows of B. in this way until top fits frame. It is best to decrease the Pl. rows to get an even graduation.

**Tassel:** Attach thread to centre at bottom of bag and string 6 inches of B. (making a 3 inch loop). Make 4 loops.

**Lining and Mounting:** Line bag with piece of silk and attach frame.

---

## "VANITY FAIR" No. 141

*Illustrated on page 26*

**Materials:** 12 Bchs. "Hiawatha" Radium Lustre Beads No. 2720.  
1 Spool Purse Twist.  
1 "Hiawatha" steel crochet hook No. 9.  
1 "Hiawatha" Jeweled Frame No. 5927.

Use Radium Lustre beads No. 2720 in the color to match the jewels on the frame.

**Size of bag:**  $3\frac{1}{2}$  inches in diameter.

Chain 8 and join to form a ring. Fill in with 12 H. St.

Cr. 2 H. St. with B., 1 Pl., 2 H. St. with B., 1 Pl.

2 H. St. with B., 1 Pl., 2 H. St. with B., 1 Pl.

2 H. St. with B., 1 Pl., 2 H. St. with B., 1 Pl.

On the next row Cr. 3 H. St. with B., 1 Pl., etc., until end of line. Continue in this manner increasing 1 B. in each section until you have 22 B. in each section. Then Cr. 3 rows of Pl. St. (No beads). This completes one side of bag. Make the other side in exactly the same manner.

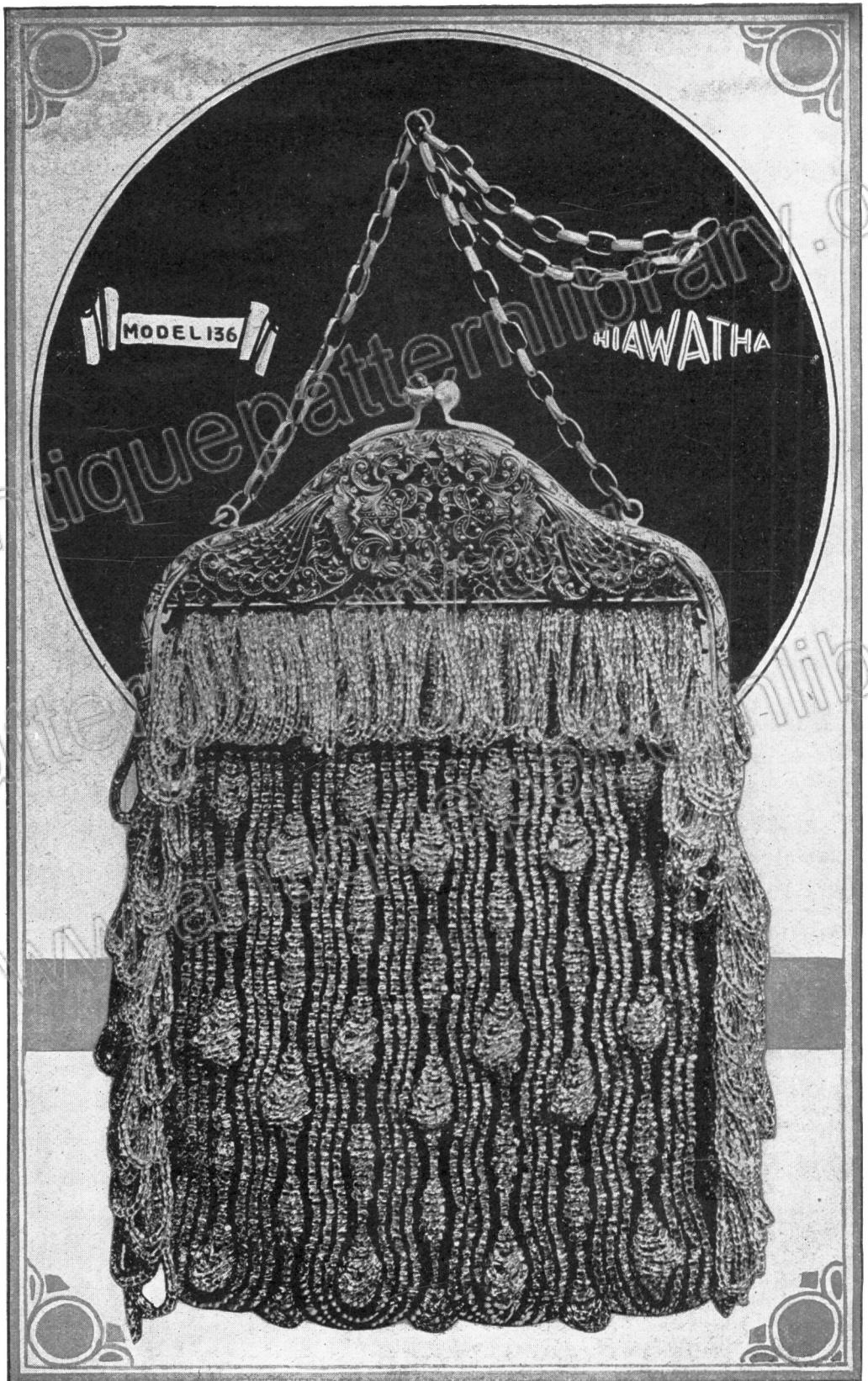
**Tassel:** Chain 8 and join to form a ring. Fill in with 12 H. St., Cr. around with H. St. and B. increasing 1 B. in each row for 12 rows. Then Cr. a 5 inch loop ( $2\frac{1}{2}$  inches doubled) in every other st.

**Handle:** Chain 7 to start. Cr. 1 row H. St. Plain, and 1 row H. St. with B., and back 1 row Pl. etc., until handle measures 8 inches.

Line bag with silk and make a pocket at the bottom of each half. Attach each half of bag to sides of frame. Line handle with piece of silk and attach to top of frame. Attach tassel to little ring provided for that purpose in the centre of hinge at bottom of bag.

---

MODEL C5 *described on page 13*





## "THE MANDALAY" Model No. 136

**Materials:** 20 Bchs. "Hiawatha" Crystal Gems No. 21/9.  
 1 spool purse twist.  
 1 pair "Hiawatha" steel knitting pins No. 17.  
 1 pair "Hiawatha" knitting pin protectors.  
 1 "Hiawatha" 5-inch filigree frame No. 5896.

A distinctive bag made with Crystal Gems No. 21/9 on a dark background.

**Size of Bag:** Width 5 inches—length 6 inches.

Cast on 58 St. K. 2 R. (ridges) Pl. without B. (2 rows make 1 ridge).

**3rd row:** \* K. 1 Pl. K. 1 St. with 2 inches of B. to form a loop. \* Repeat from \* to \* across bag making a row of loop fringes.

The balance of this bag is made in 7 vertical patterns of bead slides in diamond shapes with plain knitting between the patterns as follows:

**4th Ridge—K. 4 Pl. K. 3 B. K. 2 Pl. Sld. Pattern 1** (see table below). K. 2 Pl. K. 3B. K. 2 Pl. Sld. Pattern 2. K. balance of ridge in the same manner, making patterns 3-5 & 7 same as pattern 1, and patterns 4-6 same as pattern 2. Finish with 4 Pl. St.

The following table shows how many beads to slide in every ridge for each pattern:

**Vertical Patterns No. 1-3-5-7.**

4th—5th R.—Slide	1 B.
6th—7th R.—	2 B.
8th—11th R.—	3 B.
12th—13th R.—	2 B.
14th—15th R.—	1 B.
16th—17th R.—	1 B.
18th R.—	2 B.
19th R.—	3 B.
20th R.—	5 B.
21st R.—	7 B.
22nd R.—	8 B.
23rd R.—	7 B.
24th R.—	5 B.
25th R.—	3 B.
26th R.—	2 B.
27th—28th R.—	1 B.

Note that patterns 1-3-5-7 are exactly the same.

**Vertical Patterns No. 2-4-6**

4th R.—Slide	8 B.
5th R.—	7 B.
6th R.—	5 B.
7th R.—	3 B.
8th R.—	2 B.
9th—10th R.—	1 B.
11th—12th R.—	1 B.
13th—14th R.—	2 B.
15th—18th R.—	3 B.
19th—20th R.—	2 B.
21st—22nd R.—	1 B.
23rd—24th R.—	1 B.
25th R.—	2 B.
26th R.—	3 B.
27th R.—	5 B.
28th R.—	7 B.

Note that patterns 2-4-6 are exactly the same.

29th to 52nd R. Repeat from 4th to 28th Ridges.

53rd to 76th R. Repeat from 4th to 28th Ridges.

This completes one-half the bag. Make the other half in exactly the same manner in reverse order.

Sew up sides of bag, leaving enough space open at top for frame.

**Loops on side of bag** are made by stringing 1½ inches of beads double, to form a loop, and sewn close together from bottom to top of bag. Make a double row of these loop fringes on each side of bag, leaving a small space between the two rows.

Line bag with piece of silk and attach frame.



# "THE NIAGARA"

## Model No. 135

**Materials:** 20 Bchs. "Hiawatha" cut beads 9/0.  
 2 spools purse twist.  
 1 "Hiawatha" steel crochet hook No. 9.  
 1 "Hiawatha" Filigree Frame No. 5863.

A striking combination is obtained by using the new Opalescent Gems No. 23/9 with old gold purse twist. Original model made with Black Purse twist and "Hiawatha" Porcelain chalk beads No. 84.

**Size of Bag:** Width 5 inches. Length 6 inches.

Start with 66 chain St., 2nd to 11th rows. Cr. on each side of chain P. H. S. Continue Cr. around bag in this manner, making 10 rows of P. H. S.

**12th row:** Cr. 1 B. then 1 loop (long enough to cover rows of plain stitches beneath). Continue across, making 10 loops. Cr. 26 P. H. S. (no beads). Cr. 1 loop (as before) 1 B., etc., making 20 loops. Cr. 26 P. H. S. (no beads). Repeat 1 loop, 1 B., etc., making 10 loops.

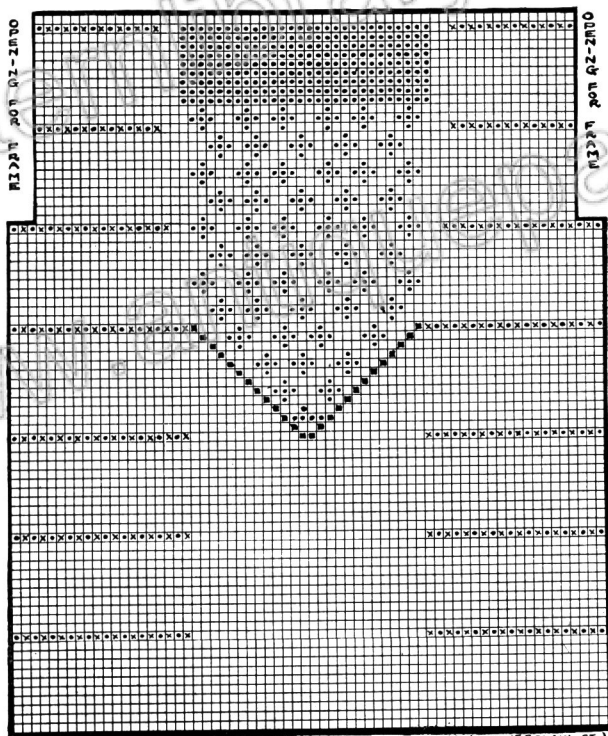
**13th to 22nd rows:** Same as 2nd to 11th rows.

**23rd row:** Same as 12th row.

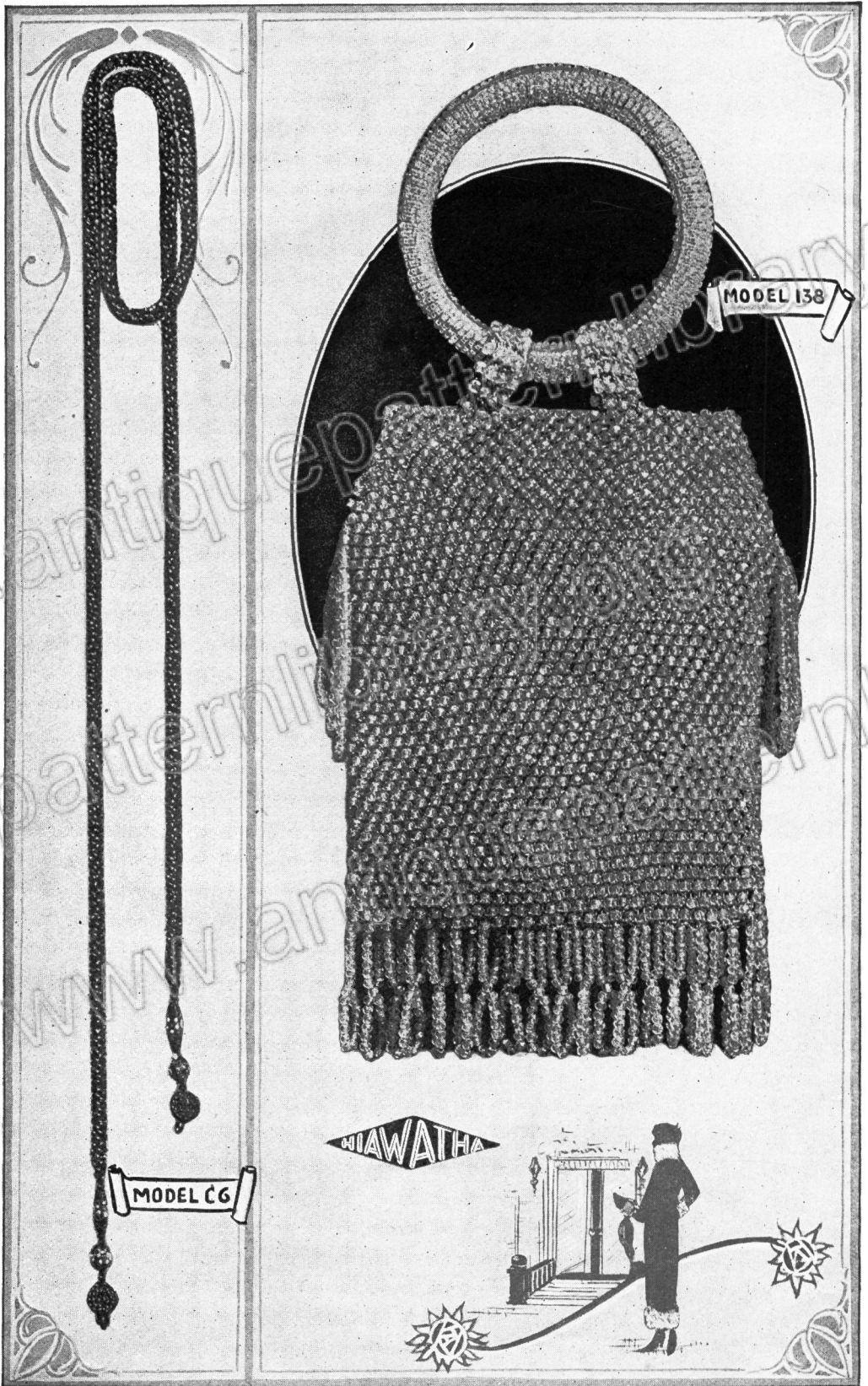
**24th to 33rd rows:** Same as 2nd to 11th rows.

**34th row:** Cr. 1 B. 1 loop (as before), etc., making 10 loops. Cr. 12 P. H. S. Cr. 2 loops 3½ inches long. 12 P. H. S. Then 1 loop, 1 B., etc., making 20 loops. 12 P. H. S. and 2 loops 3½ inches long. 12 P. H. S. 1 loop, 1 B., etc., making 10 loops. Continue crocheting design, using the illustrated chart as a guide.

**Lining and Mounting:** Attach bag frame and line bag with silk.



O LOOPS 3 1/2 INCHES LONG  
 X SINGLE BEADS  
 X LOOPS ABOUT 1 INCH LONG (TO COVER PLAIN ST.)  
 O PLAIN HALF STITCHES (NO BEADS)  
 EACH SPACE REPRESENTS ONE STITCH



## "THE MIGNONETTE" No. 138

**Materials:** 6 Bchs. "Hiawatha" crystallized gems No. 3129.  
1 Spool Purse Twist.  
1 "Hiawatha" Steel Crochet Hook No. 9.  
1 Pair "Hiawatha" beaded rings No. 3137.

Made with a new bead in size that can be had in unusually brilliant shades—specially adapted for making all kinds of bags and chains.

**Size of Bag:** Width at top  $4\frac{1}{2}$  inches—width at bottom 5 inches. Length 6 inches.

Pattern stitch used throughout the bag (2 chain, 1 bead, 1 half stitch).

Start with about 60 chain St. or 5 inches long. Cr. all around Ch. with P. H. S. (no beads). Then Cr. 2 Ch. St. with 1 B. in every other H. St. Continue Cr. around bag in this manner until 37 rows of B. are finished.

**Top:** \* crochet back and forth on one side of bag. Make 11 rows of B., decreasing 1 St. at each end about every third row.\* Repeat from \* to \* for other side of bag.

**Tabs:** Start with 6 Ch. St. Cr. 1 row P. H. S. Then Cr. 4 B., using the same St. as used in rest of bag. Cr. 8 rows of B. in this manner—make 4 tabs.

**Fringe:** String 21 B. and go back through the 7th B. from the top. String 6 more B. and fasten to bag. Repeat 20 times. **Tassels** on side of bag are made by stringing 4 inches of B. (which makes a 2 inch loop) and attaching right under opening at side of bag. Make 3 loops on each side.

**Line** bag with piece of silk, putting a piece of stiff buckram between lining and beadwork at top of bag, where sides are open.

Sew 2 tabs on each side at top of bag, leaving 1 end loose, insert beaded rings and sew down loose ends of tabs.

---

## "THE NOTRE DAME" No. C6

**Materials:** 3 Bchs. "Hiawatha" Crystallized Gems No. 3129.  
1 "Hiawatha" Steel Crochet Hook No. 10.  
50 Yards Buttonhole Twist or Tatting Thread.  
2 Beaded Balls No. 2523.  
2 Pcs. each of "Hiawatha" Real Venetian Beads, round and oblong.

The crocheting on this chain is done exactly the same as chain No. 1, except that there are 4 beads in a row instead of 6. (See page 29.)

**Tassels:** Attach tassels as illustrated.

---

## THE FRENCH SCARF CHAIN No. C5

*Illustrated on page 6*

**Materials:** 2 Bchs. "Hiawatha" Silver Glo Gems No. 3117.  
2 Bchs. "Hiawatha" Cut Crystallized Gems No. 3129.  
2 Beaded Balls No. 2523.  
50 Yards Buttonhole Twist.  
1 "Hiawatha" Steel Crochet Hook No. 10.  
2 "Hiawatha" Beading Needles.

The important part of making this model is the stringing of the beads. String 1 round bead and 1 cut bead alternately— $\frac{1}{2}$  bunch of each at a time. Crochet in the same manner as in chain No. 1 with the exception that there are 4 beads in a row. (See page 29.)

**Length 60 inches**—attach 1 beaded ball at each end and a tassel of 5 strings of beads 4 inches long.



MODEL 125

HIAWATHA

## “THE FAN-TAN” No. 125

**Materials:** 12 Behs. “Hiawatha” quality beads size 9/0.  
1 spool purse twist.  
2 “Hiawatha” steel knitting pins No. 17.  
1 Pair “Hiawatha” Knitting Pin protectors.  
1 “Hiawatha” bag frame No. 5935.

A good combination is obtained by using grey silk and red transparent-iridescent beads No. 1105.

**Size of bag:** 5 inches wide at top—6 inches long.

Cast on 48 St. K. 1 ridge Pl. (2 rows make 1 ridge). K. 4 ridges with 1 B. in each St. always coming back with a line of Pl. (without beads) on inside of bag. K. 3 Pl. St. at the end of each row.

11th R. K. 3 Pl. \* Slide 1 B. K. 5 Pl. \* Repeat from \* to \* 8 times, making 9 diamonds in all across bag. Finish line with 3 Pl. St. K. the next line in the same manner, sliding 2 beads instead of 1. Continue this way, increasing the slides in every line until there are 8B. slides. This completes  $\frac{1}{2}$  the diamond. Repeat in reverse order for the other half of the diamond.

26th-27th R.: K. 1 B. in each St. across line, starting and finishing with 3 Pl. St. at each end.

28th R.: K. 3 Pl. \*\* Slide 1 B. K. 5 Pl. \*\* Repeat from \*\* to \*\* 8 times, making 9 slides in all. Finish line with 3 Pl. St.

K. the following R. in the same manner, increasing the slides as follows:

2 Ridges Slide 2 Beads	5 Ridges Slide 5 Beads
3 Ridges Slide 3 Beads	6 Ridges Slide 6 Beads
4 Ridges Slide 4 Beads	21 Ridges Slide 7 Beads

This completes one-half the bag. For the other half repeat in reverse order. Sew up sides of bag, leaving an opening at the top to fit frame.

Line with piece of silk and attach frame.

## “THE BERKELEY” No. 143

*Illustrated on page 27*

**Materials:** 18 Behs. “Hiawatha” Cut Beads No. 2719 size 6/0.  
3 Spools Purse Twist.  
1 “Hiawatha” Steel Crochet Hook No. 9.  
1 “Hiawatha” Draw string Cord No. 617 or 725.

Original model made with large lustre beads No. 2719 which can be had in a variety of beautiful colors.

**Size of Bag:** Width  $5\frac{3}{4}$  inches. Length  $7\frac{1}{2}$  inches.

1st row: Chain 133 to start.

2nd row: Cr. all around ch. 1 row P.H.S.

3rd row: Cr. alternately 5 B. and 2 P.H.S. all around.

4th row: Cr. over the 1st B. in the 3rd row 1 P.H.S. then Cr. 5 B. 2 P. H. S., 5 B. etc., etc., until end of line.

Continue in this manner always putting 1 P.H.S. over the 1st B. in the previous row until 79 rows are crocheted.

**Inverted Cuff:** Reverse work and join thread.

1st row: Cr. 1 B. in every other St. all around.

2nd row: Cr. 1 B. in every other St., the B. to be where the space is on 1st row.

3rd, 4th, 5th rows: Cr. 3 rows P.H.S. all around.

6th row: Cr. 1 B., 7 P. H. S., 1 B., 7 P. H. S., etc., all around.

7th row: Cr. 3 B., 5 P. H. S., 3 B., 5 P. H. S., etc., all around.

8th row: Cr. 5 B., 3 P. H. S., 5 B., 3 P. H. S., etc., all around.

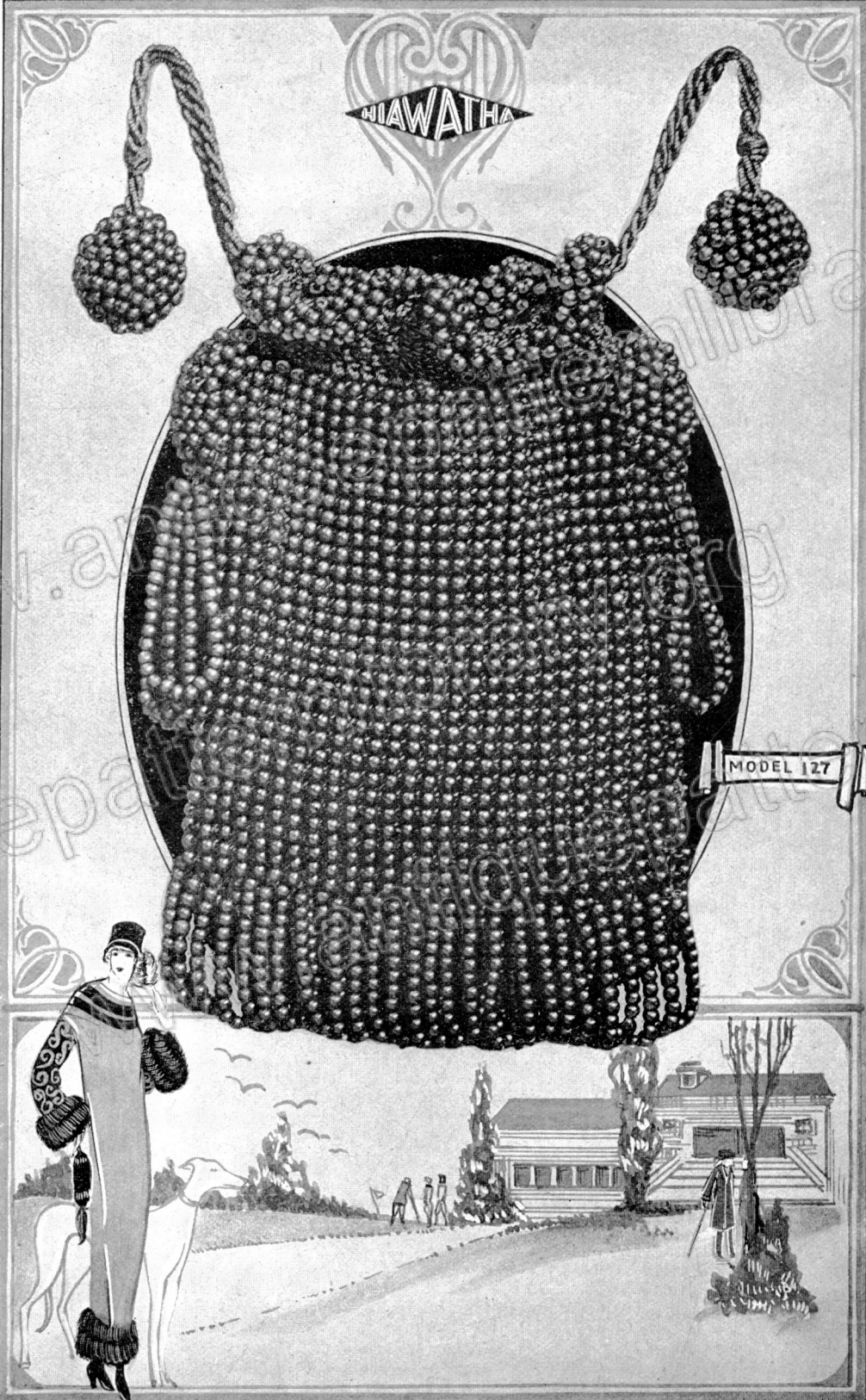
9th row: Cr. 7 B., 1 P. H. S., 7 B., 1 P. H. S., etc., all around.

10th row: Same as 8th row.

11th row: Same as 7th row.

12th row: Same as 6th row.

13th to 18th row: Same as 1st to 5th rows in reverse order. Finish with loops of 30 B. catching same on to every other St. of inverted cuff. Attach loops of 55 B. on to bottom of bag. Attach “Hiawatha” Draw-string cord.





## "THE NEWPORT" No. 127

**Materials:** 3 Bunches "Hiawatha" "Ebonoid" Beads No. 3222.  
1 Spool sweater silk. 2 "Hiawatha" steel knitting pins No. 10.  
1 "Hiawatha" steel crochet hook No. 4.

With Hiawatha "Ebonoid" beads, very pretty effects can be obtained by contrasting colors of beads and silk.

**Size of Bag:** Width 6 inches—length 7 inches.

Cast on 28 St. on knitting pin, K. 1 row Pl. (without B.).

K. 31 rows with 1 B. in each St., always coming back with a row of Pl. on inside of bag.

On next row K. 1 Pl. slide 18 B. to form a loop. K. 1 Pl., etc., continue making loop fringes in this manner until end of line.

This completes one-half of the bag. Make the other half in the same manner, casting off stitches when finished. Sew bag up on sides.

**Top of Bag:** With crochet hook fasten silk at seam. Chain 4 and double Cr. into next St. Chain 1 and double Cr. in 2nd space. Continue in this way, making open meshes all around bag, until four rows are finished.

On the next row single Cr. 1 St. with a B. in each St. all around bag. Make 3 rows in this manner, then break thread and sew ends. Insert cord on top of bag through meshes.

**Balls on end of cord:** Chain 3 and join 2 St. with a B. in each St. Continue in this manner until there are 6 St. around. Start to increase work just enough to keep it cup shaped. After required size is reached (1½ inch diameter) decrease in the same manner as increased. Stuff with cotton.

Insert cord and sew firmly in opening of ball.

Cr. the disks on side of bag in the same manner as the balls on the ends of cord without decreasing and adding tassel of 5 loops of 30 beads each.

## "THE KENILWORTH" No. 101

*Illustrated on page 27*

**Materials:** 11 Bunches Hiawatha Platinum Steel Beads, No. 9.

2 Spools Black or Navy Purse Twist.

1 "Hiawatha" bag chain No. 918.

Bold stripes of "Hiawatha" Platinum Steel Beads against a dark background lends a pleasing contrast.

**Size of Bag:** Width 5 inches. Length 7 inches.

Cr. 4 chains and join. Cr. alternately 1 P. H. S. and 1 B. until 9 B. are Cr.

3rd Line—Cr. alternately 1 P.H.S. and 2 B.

4th Line—1 P.H.S. and 3 B.

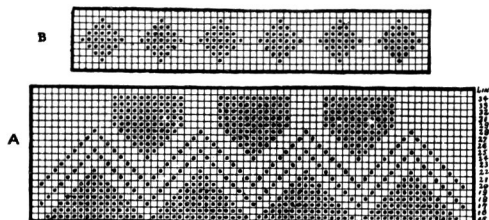
5th Line—1 P.H.S. and 4 B. The P.H.S. always being an increased st. Continue in this manner crocheting one additional B. to each group of the succeeding lines, until there are groups of 15 B. and 1 P.H.S.

From 16th Line, begin to use 2 B. less on each succeeding line, also inserting the zigzag design, as indicated on Chart A.

Continue in this fashion until bag measures 5½ inches.

Crochet 1¾ inches of P.H.S. and disconnect thread.

**Inverted Cuff:** Reverse work and connect thread. Cr. 2 chains, catching 2 B. on last chain, and Cr. on to border into third stitch. Make 4 lines of this. Make 1 line P.H.S. all around after which make diamonds as indicated on chart B. Then make 4 lines of 2 chains, etc., as above and end with loops of 32 beads each. Make Tassel—Attach Cord.





## "THE RIALTO" Model No. 144

**Materials:** 18 bunch round or cut steel beads size 8, 9 or 10.  
2 Spools Purse Twist.  
1 "Hiawatha" steel crochet hook No. 9.  
1 "Hiawatha" bag frame No. 5959.

Model featured made with round steel beads, combined with grey purse twist.

**Size of bag:** Diameter 5 inches.

Chain 6 and join to form a ring.

Fill in with 12 H. St.

Crochet: 2 H. St. with B., 1 Pl., 2 H. St. with B., 1 Pl.  
2 H. St. with B., 1 Pl., 2 H. St. with B., 1 Pl.  
2 H. St. with B., 1 Pl., 2 H. St. with B., 1 Pl.

On the next row crochet 3 H. St. with B. and 1 Pl. until end of row. Continue in this manner always increasing 1 B. in every section until 35 B. are in each section. This completes one side of bag.

Crochet the other side in exactly the same manner.

**Fringe:** Crochet a fringe, half around, on one side of bag, four inches turned up, making a two inch fringe.

**Mounting:** Line with silk and attach frame.

## "THE SOPHOMORE" Model No. 117

**Materials:** 24 Bchs. "Hiawatha" cut beads 9/0.  
2 Spools Purse Twist.  
1 Pair "Hiawatha" Knitting Pins No. 18.  
1 Pair "Hiawatha" Knitting Pin Protectors.  
1 "Hiawatha" Filigree Frame No. 5884/6.

Graduated columns and stripes of single beads, brings forth the excellence of the Crystal Gems No. 21/9 on a background of jade green Purse Twist.

**Size of bag:** Width 6 inches. Length 7 inches.

Cast on 69 St. K. 3 ridges Pl. (without beads). K. 12 ridges with 1 B. in each St., always coming back with a line of Pl. (no beads) on inside of bag.

Make 1 row of loops of 34 B. each with a Pl. St. between each loop. K. 1 ridge Pl.

18th ridge: K. 2 Pl. \* 2 B. 2 Pl. Slide 2 B. K. 2 Pl. \*. Repeat from \* to \* till end of line. When coming back on inside of bag to complete ridge K. as follows: 6 Pl. Slide 2 B. 6 Pl. Slide 2 B., etc., etc., till end of line.

**Note:** When knitting back on inside of bag always knit 6 Pl. before sliding beads.

The following 63 ridges are made in exactly the same manner with the exception of the slides which are made as follows:

12 ridges—slide 2 beads	9 ridges—slide 6 beads
11 ridges—slide 3 beads	7 ridges—slide 7 beads
10 ridges—slide 4 beads	7 ridges—slide 8 beads
10 ridges—slide 5 beads	

**Bottom Band:** K. 6 Pl. Cast on 2 St. K. 6 Pl. Cast on 2 St., etc., until end of row. Then K. 20 lines with a single B. in each St., always coming back with a row of Pl. (no beads) on inside of bag.

Next row: K. 6 Pl., cast off 2 St. K. 6 Pl. Cast off 2 St., etc., until end of row.

Continue balance of bag by reversing the order. Sew up sides.

Line bag with piece of silk and attach frame.



## "THE THAMES" No. 126

**Materials:** 4 Bchs. "Hiawatha" crystallized gems 2648 or "Silver Glo Gems" No. 3117.  
2 spools purse twist.  
1 Hiawatha Crochet Hook No. 9.  
1 Hiawatha Filigree Frame No. 5859.

This model looks well with any blended or contrasting color of beads and silk.

**Size of bag:** Width  $4\frac{1}{2}$  inches—length 6 inches.

**Bottom of bag:** Ch. 54, Cr. on each side of Ch. 1 row of Pl. St. without beads \*. On next row Cr. 3 B. with St. between each bead—then 3 Pl. St. \*. Repeat from \* to \* 8 times more, making 9 columns across the bag. Cr. 1 row of Pl. St., Cr. 22 rows in this manner, always with 1 line of Pl. St. between each row of B., Cr. 23rd row the same as preceding rows, leaving an opening on sides for frame. Cr. 13 rows in this manner.

Finish off with 2 rows of Pl. St.

**Fringe:** Fasten silk to end of bag and string 15 beads and go back through the 7th B. from the top. String 6 more B. and fasten to bag. Repeat 15 times. Line with silk and attach frame.

## "THE FRENCH ENVELOPE" No. 146

*Illustrated on page 26*

**Materials:** 6 Bunches Star Brand cut steel beads size 8 or 9.  
4 Bunches colored metal beads size 8.  
1 Spool each of navy and grey purse twist.  
6 Dozen each of red and blue jewels number 2731 or 3118.  
1 "Hiawatha" filigree envelope rod number 5936.

The contrasting colors of the silk, beads and jewels gives this model an impressive appearance. This bag also makes up very nicely with copen, jade, gold or blue metal beads, combined with the cut steel beads.

**Size of Bag:** Width  $5\frac{1}{2}$  inches. Length  $3\frac{1}{2}$  inches.

**Size of Flap:** Width  $5\frac{1}{2}$  inches. Length  $1\frac{1}{4}$  inches.

String 2 bunches of red beads on grey silk and chain 76 St., Cr. on each side of Ch. 1 row of H. St. (no beads).

3rd row: Cr. with 1 red B. in each st. all around.

\*4th row: Cr. 7b. 1 pl. 7 b. 1 pl. etc. all around.

5th row: Cr. 5 b. 3 pl. 5 b. 3 pl. etc. all around.

6th row: Cr. 3 b. 5 pl. 3 b. 5 pl. etc. all around.

7th row: Cr. 1 b. 7 pl. 1 b. 7 pl. etc. all around.

8th row: Cr. 3 b. 5 pl. 3 b. 5 pl. etc. all around.

9th row: Cr. 5 b. 3 pl. 5 b. 3 pl. etc. all around.

10th row: Cr. 7 b. 1 pl. 7 b. 1 pl. etc. all around.

11th row: Cr. with 1 b. in each st. all around then break thread.

Repeat from \* to \* using navy purse twist and steel beads.

Repeat from \* to \* using grey purse twist and red beads.

Repeat from \* to \* using navy purse twist and steel beads.

Repeat from \* to \* using grey purse twist and red beads.

Repeat from \* to \* using navy purse twist and steel beads.

**Flap: Cr. on one-half the bag only, in the same manner repeating from \* to \* using grey purse twist and red beads.**

**Note:** To keep flap straight, crochet 20 chain stitches at the end of each line.

Repeat from \* to \* using navy purse twist and steel beads.

Finish flap with loop fringes of 35 b. each.

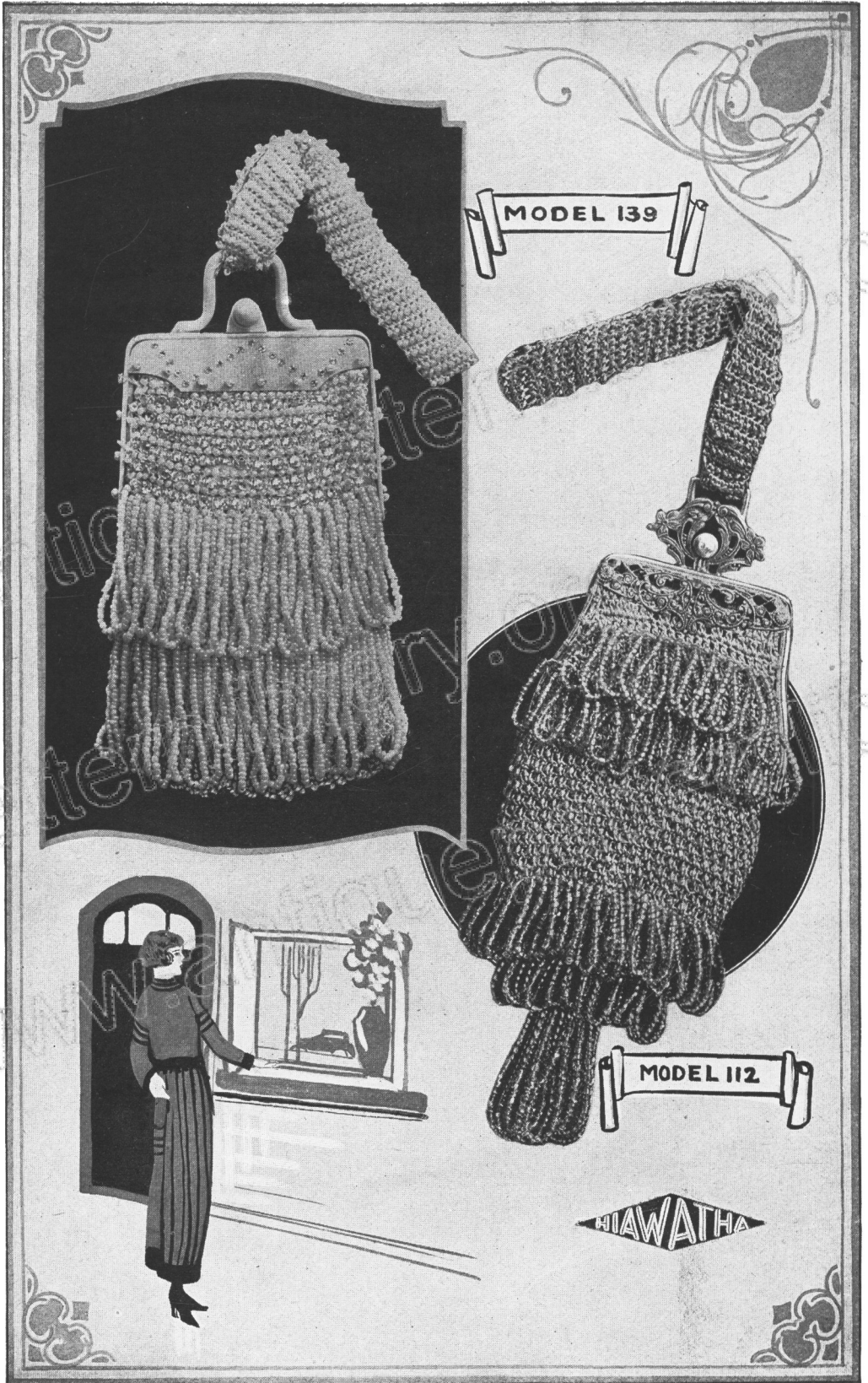
Then cut chain stitches and finish off with buttonhole stitch on each side to prevent ripping.

**Fringe** on bottom of bag is made, by sewing alternately 1 loop of steel beads and 1 loop of red beads, each loop being 1 inch long.

Slip flap through envelope rod.

Sew blue jewels on the grey silk diamonds and red jewels on the blue silk diamonds. Each jewel to be sewn individually.

Line bag with piece of silk and sew snap fastener in centre of bag.



MODEL 139

MODEL 112

HIAWATHA

## “THE PERLENE” No. 139 Illustrated on page 22

**Materials:** 10 Bchs. “Hiawatha” PERLENE Beads No. 400  
1 Spool Purse Twist to match.  
1 “Hiawatha” Steel Crochet Hook No. 9.  
½ Gross Jewels No. 2530/15.  
1 “Hiawatha” Frame No. 5939.

Original model illustrated made with white “Perlene” Beads No. 400/1 and white purse twist.

**Size of bag:** Width 3 inches—length 4½ inches.

Chain 4 inches to start. Cr. on both sides of chain with whole St. for 8 rows. On the next row Cr. 1 B. with 1 H. St. and a 4 inch loop

*Continued on page 25*

## “THE PIROUETTE” No. 112 Illustrated on page 22

**Materials:** 8 Bchs. “Hiawatha” Cut Beads 9/0.  
1 Spool Purse Twist.  
1 “Hiawatha” Steel Crochet Hook No. 10.  
1 “Hiawatha” Filigree Frame No. 5680.

Sunset beads No. 1525/32 with purse twist to match makes a dainty dance or party bag.

**Size of bag:** Width 2½ inches—length 4½ inches.

Ch. 6 and join. Cr. in each Ch. 2 loops (4 inches long) for the tassel. Then Cr. 24 whole St.

Continue crocheting with whole St. increasing in each row for 3 rows to keep the work flat.

Next row Cr. 1 H. St. with 1 B. and 1 H. St. with 30 B. forming a loop. Repeat all around bag.

Then Cr. 3 rows of whole St. \* Cr. 1 row of loops as before (1 H. St. with 1 B. and 1 H. St. with 30 B. forming a loop.) \* Cr. 3 more rows of whole St. then repeat from \* to \*. Continue by Cr. 2 chains and 1 B. with 1 H. St. for 13 rows. \*\* Cr. 3 rows of whole St. across half of the bag decreasing at each end to fit the frame. \*\* Then Cr. 1 row of loops as described from \* to \*, making 21 loops. Cr. 3 rows of whole St. and 1 row of 17 loops and then 3 rows of whole St. finishing one side of bag. For the other half of the bag repeat from \*\* to \*\*.

Line with silk and attach frame.

**Handle:** Ch. 7 to start. Cr. 1 row of H. St. plain and 1 row of H. St. with B. and back 1 row Pl., etc., etc., until handle measures 8 inches. Line handle with piece of silk and attach to top of frame.

## “THE SUNSHOWER” No. 107 Illustrated on page 20

**Materials:** 21 Bchs. “Hiawatha” Cut Beads 9/0.  
1 Pair “Hiawatha” Rings No. 1903 or 3137.  
2 Spools Purse Twist.  
1 “Hiawatha” Steel Crochet Hook No. 9.

Bronze transparent-iridescent beads No. 2569/1 with French Blue Purse Twist makes an ideal combination for this model.

**Size of bag:** Width 5 inches—length 5¼ inches.

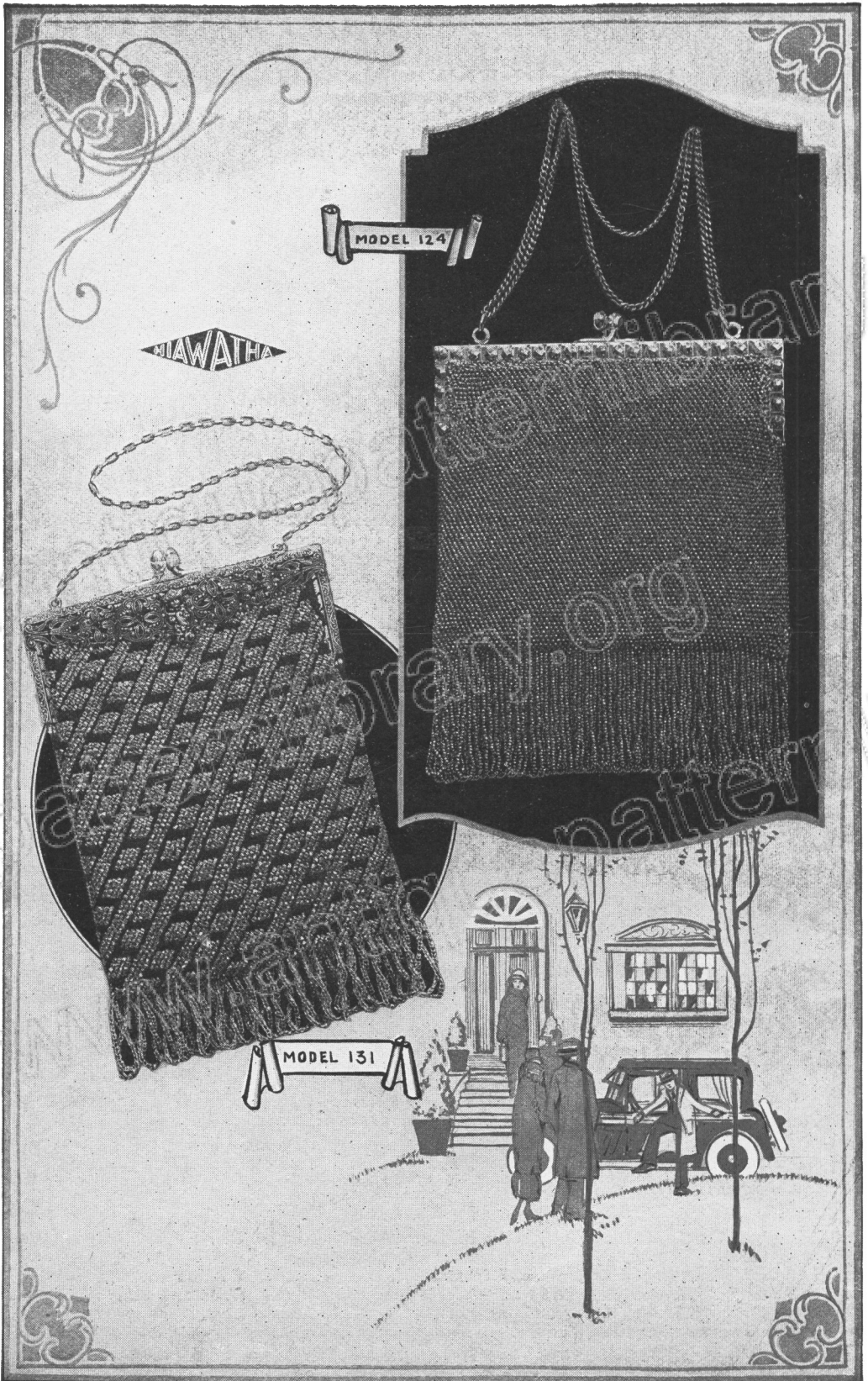
Start with 65 chain St. or about 5 inches long. Cr. on both sides of chain 1 row of P. H. S. On the next row Cr. alternately 1 P. H. S. with 1 B. and 1 H. St. plain. Cr. on top of Pl. St. 1 B. and on top of B. 1 Pl. St. Continue in this manner, always alternating the Pl. St. and the B. Work 48 rows, then make 1 row of Pl. St., decreasing 2 St. at each end.

**Long Loops:** Cr. 1 St. with 1 B. and the next St. with a 9 inch loop. Repeat all around bag.

Then Cr. 24 rows of solid B., decreasing the bag 2 B. on every 3rd row.

**Straps for Handle:** Ch. 7 to start. Cr. 1 line Pl., then 1 line with B., 1 line Pl., etc., until strap measures 3 inches. Make 4 straps and attach 2 on each side of bag and insert rings as illustrated.

Line bag with silk.



MODEL 124

HIAWATHA

MODEL 131



## “THE CHANTILLY” No. 124

**Materials:** 15 Bchs “Star Brand” cut steel beads size 8-9 or 10.  
 2 spools grey spurse twist.  
 1 “Hiawatha” steel crochet Hook No. 9.  
 1 “Hiawatha” French steel frame No. 4089/14.

This bag made with cut steel beads and mounted on a steel bag frame combines simplicity of design with smart appearance.

**Size of Bag:** Width 5½ inches—length 5 inches.

**Bottom of Bag:** Cr. about 60 ch. st. or 5½ inches long. Cr. on both sides of Ch. 1 Row of P. H. S. On next row cr. H. St. with B. in each St. Continue in this manner till bag measures 3½ inches. **Begin opening for bag frame).** Cr. next row same as preceding row decreasing 3 St. on each side, Cr. 10 ch. St. without B. on each side. Repeat last line till bag measures 5 inches. Sew on loop fringe 1½ inches long close together. Insert lining.

**Mount frame** by cutting the ch. st. and finishing off with button hole st. to prevent ripping. \_\_\_\_\_

## “THE COUNTRY CLUB” No. 131

**Materials:** 17 Bchs. “Hiawatha” cut Beads 9/0.  
 2 spools Purse Twist.  
 1 “Hiawatha” Steel Crochet Hook No. 9.  
 1 “Hiawatha” Filigree Frame No. 5876/5.

A charming effect can be produced by contrasting color of beads and silk.

**Size of Bag:** Width 5 inches. Length 6 inches.

Chain 60. Cr. on each side of Ch. as follows:

**1st row:** \* 4 H. St. with 1 B. in each St. 1 P. H. S., 3 B., 1 P. H. S., \* Repeat from \* to \* 13 times around the bag.

**2nd row:** Cr. over the 1st B. in the previous row 1 P. H. S., then 4 B., 1 P. H. S., 3 B., 1 P. H. S., etc., all around the bag.

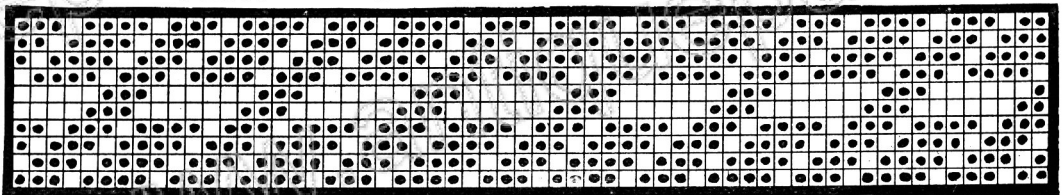
Continue in this manner crocheting 1 P. H. S. above the 1st B. in the previous row, thus getting the oblique design as illustrated.

On the 58th to 82nd rows, Cr. 3 Pl. St. and 12 chains at each end of bag for opening of frame.

**Fringe:** Cr. 1 row of loops across bottom of bag, making each loop 3 inches doubled up.

**Lining and Mounting:** Line bag with piece of silk, then cut open chain stitches at each side of bag and attach frame.

### DESIGN USED THROUGHOUT THE BAG



● BEADS

□ PLAIN HALF STITCHES

### MODEL No. 139 *Continued from page 23*

with the next H. St. Repeat all around bag. Continue crocheting the next 8 rows with whole St. Then Cr. 1 B. with 1 H. St. and a 4 inch loop with the next H. St.

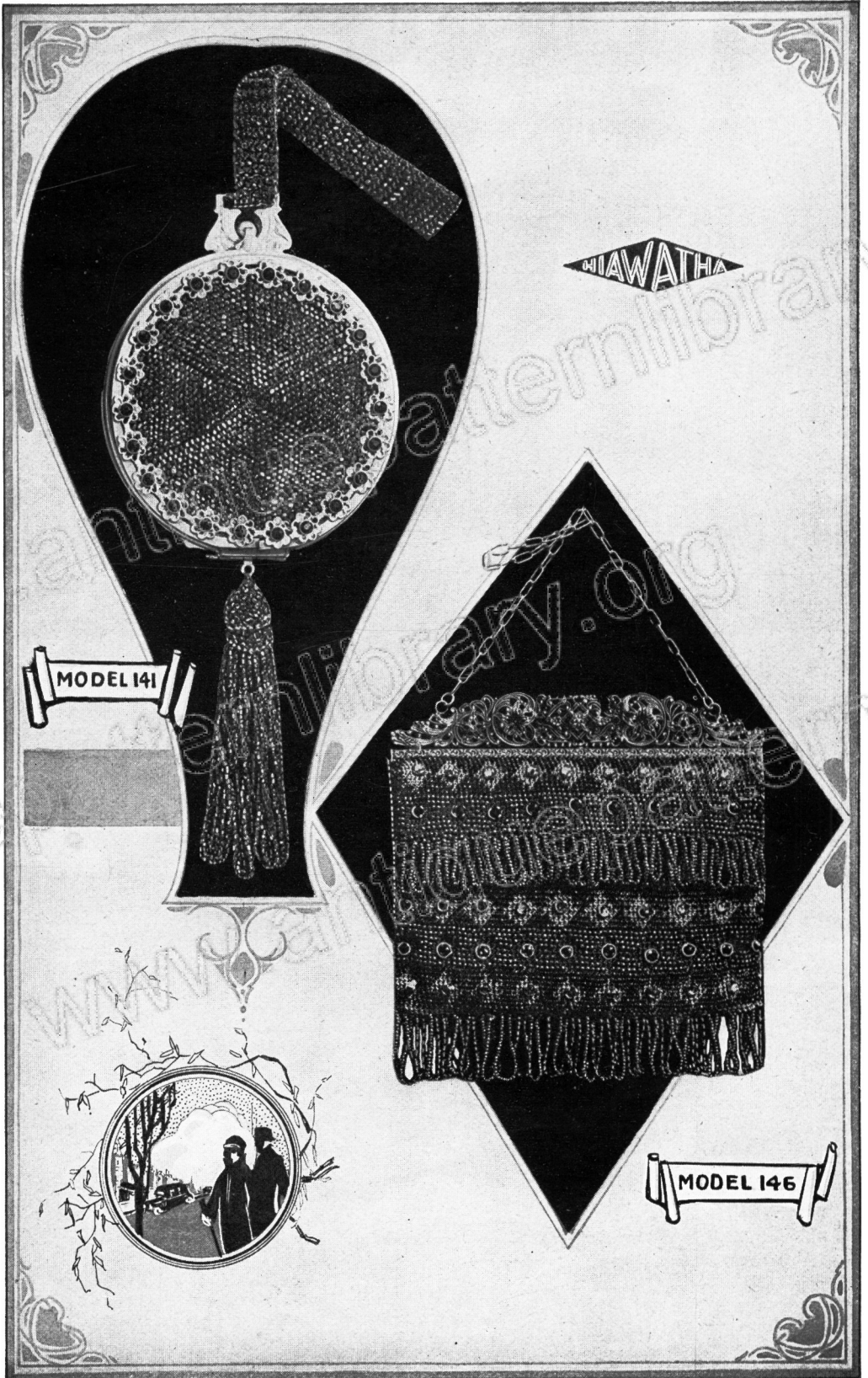
\* On the next row Cr. half the bag, back and forth with whole St. plain and 1 row of H. St. with B. and back 1 row plain, etc., etc., decreasing at each end to fit the frame. Crochet 8 rows in this manner \*. Crochet the other half of bag as from \* to \*.

Sew jewels evenly in spaces between the rows of beads on top.

**Line** with piece of silk and attach frame.

**Handle:** Chain 7 to start. Cr. 1 row H. St. plain and 1 row H. St. with B. and back 1 row plain, etc., etc., until handle measures 8 inches.

**Line** handle with piece of silk and attach to top of frame.



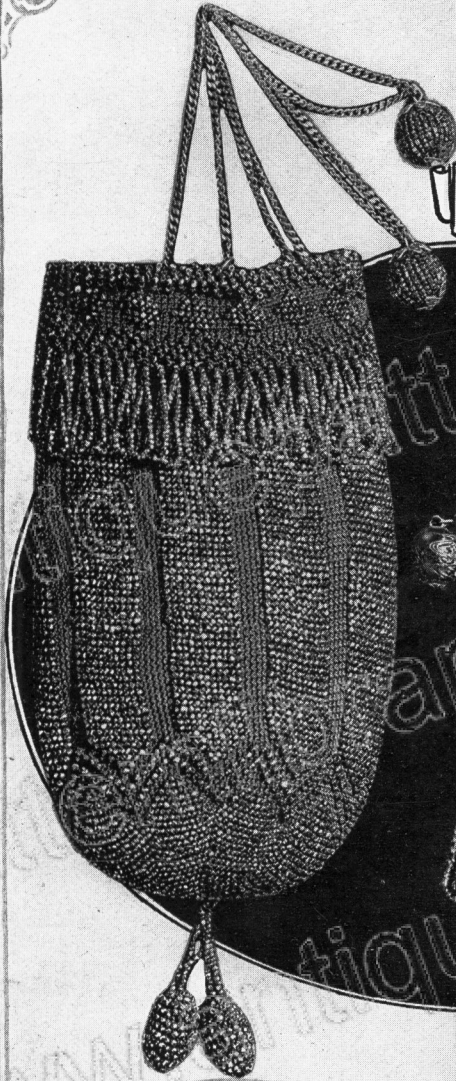
MODEL 141

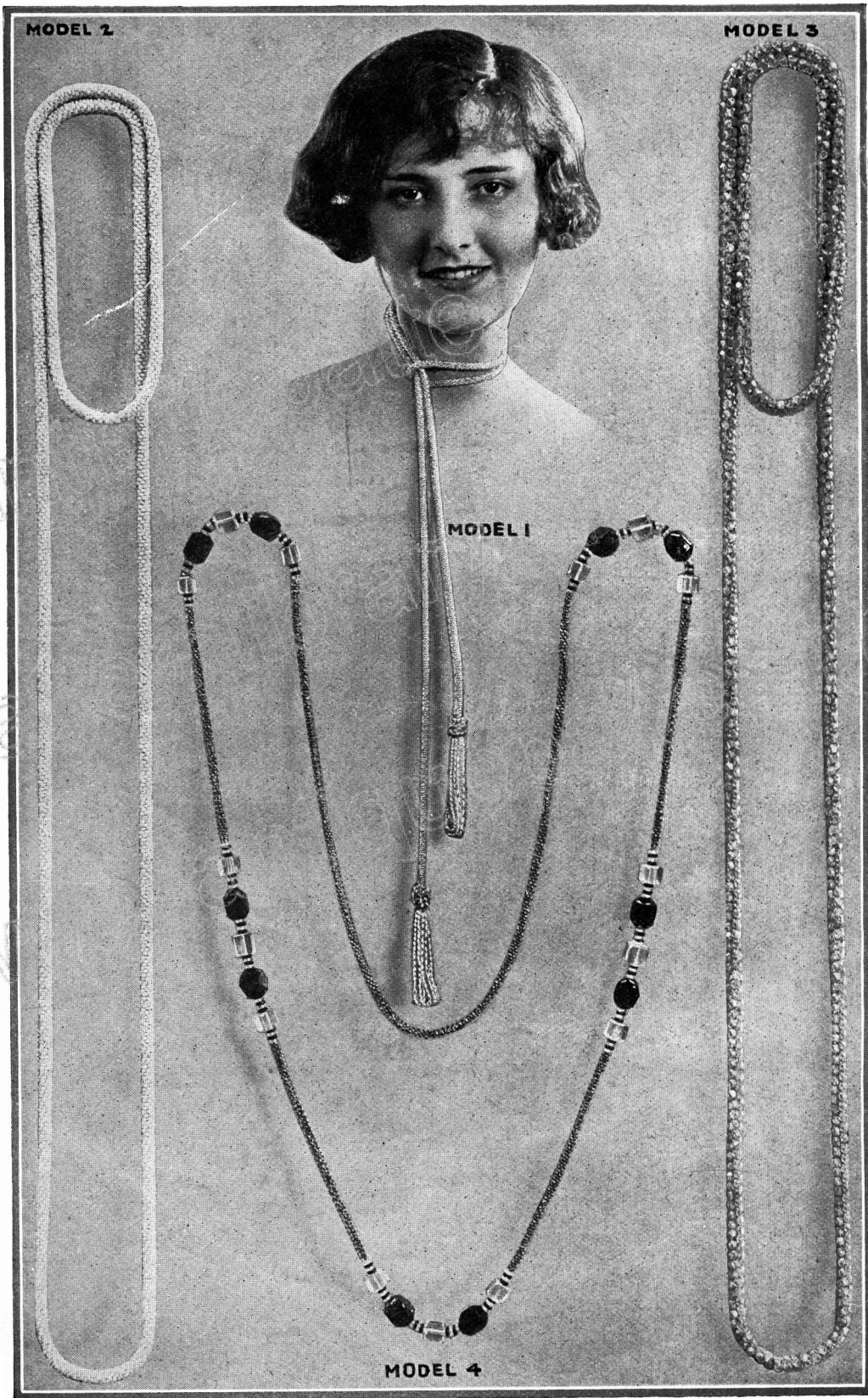
MODEL 146

HIAWATHA

MODEL 101

MODEL 143





## “THE HIAWATHA CHAIN” No. 1

**Materials:** 5 Bchs. “Hiawatha” Brilliant Lustre Beads No. 1525 or 2718, or “Hiawatha” Bead Reel No. 2795 (See note below.)

1 “Hiawatha Crochet Hook No. 10.  
50 yards button hole twist.

2 Pc. round or square Venetian Beads.

Allow 12 inches of silk and Ch. 5. Put hook in chain nearest to hook \*. Push up a bead single crochet or (slip stitch) \*. Put hook into the next chain and repeat from \* to \*. Repeat until there are 4 beads in a row, then join by putting hook under the thread the first bead is on. Push up another bead single crochet or (slip stitch). This makes five beads in each row.

Continue this way by going behind each bead, catching the thread the bead is on, crocheting around and around until the chain measures required length or about 54 inches.

**Tassels:** Put a Venetian bead on each end and attach tassel 8 strands, 3 inches long doubled up.

**Note:** With a “Hiawatha” bead reel no button hole twist or stringing is required. Beads come all strung, ready to be crocheted.

## THE PERLENE ENDLESS CHAIN No. 2

**Materials:** 5 Bchs. “Perlene” beads No. 400.

50 yards. button hole twist.

1 “Hiawatha” Crochet Hook No. 10.

The crocheting on this chain is done exactly the same as No. 1 except there are six beads in a row instead of five and crocheting the ends together instead of putting tassels on.

## THE WATER LILY CHAIN No. 3

**Materials:** 2 Bchs. “Hiawatha” crystalized gems 2648.

1 Hiawatha crochet hook No. 10.

50 Yds. buttonhole twist or tatting thread.

The crocheting on this chain is done exactly the same as No. 1 except that there are 3 beads in a row instead of 6.

## THE “CUBIST” WOVEN CHAIN No. 4

**Materials:** 2 Spools button hole twist.

2 Bchs. No. 9 or 10 cut or round steel beads.

2 “Hiawatha” beading needles.

Large fancy or Venetian and rondelles about 2 dozen or enough to complete the group design.

**Instructions:** Thread 2 needles, one at each end of a four yard piece of silk thread. \*\*On needle No. 1 string the large glass beads, according to the design desired. Then put needle No. 2 through the same beads.

String the steel beads on needle No. 1 until the desired length is reached, this will be the spacing between the groups of fancy beads. Then with needle No. 2 pick up one steel bead and go through second bead, picking up one more and going through fourth bead, etc., etc. Continue in this manner always skipping one bead, and going through the following beads.\*\*

Repeat from \*\* to \*\* until there are five sections of large fancy beads.

String 12 inches of steel beads, weaving these as explained, and connecting them at the starting point, by going through the first three large beads.

After chain is completed, thread another needle and starting at the beginning pass the needle through the first design. Pass the needle through the first steel bead on the outside row. Pick up a steel bead and pass the needle through the second steel bead on the outside row.

Continue in this manner until the whole chain is completed.

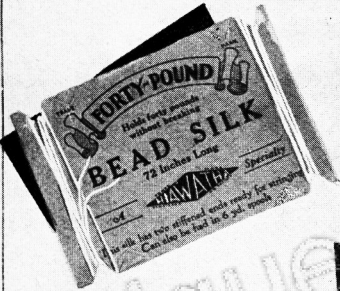


Illustrated above are a few up-to-date bags that are made by ordinary sewing with Hiawatha stamped patterns. Complete instructions come with each pattern, no knitting nor crocheting necessary.

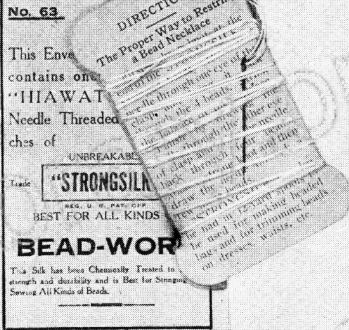
# A FEW



## NECESSITIES FOR THE BEAD WORKER



A bead silk that is strong enough to sustain weight of forty pounds, yet soft and pliable, enabling its use for beads with small holes. Put up in convenient two yard reels and six yard spools.



A handy set of needles for all beading purposes, consisting of seven assorted styles.

A chemically treated fine silk with a Hiawatha bead needle attached ready for use. Also put up in twelve yard spools.



Prevents loss of stitches while bag is being made. Also indispensable when partly made bag is laid aside.

"HIAWATHA" SUPERIOR STEEL, NICKEL-PLATED.	Made in England.	ONE PAIR No. 17	Patent No. 19185 Rustproof Envelope.	KNITTING PINS MADE EXPRESSLY FOR BEADED BAG KNITTING

SPECIALLY ADAPTED FOR BEAD BAG WORK.  
PUT UP 1 PAIR TO AN ENVELOPE

