

The Antique Pattern Library

For more information, please see our website at: <http://www.antiquepatternlibrary.org>



This is a scan of an antique book that is, to the best of our knowledge, in the public domain. The scan itself has been photo-edited for readability, and is licensed under the **Creative Commons Attribution-NonCommercial-ShareAlike License**. To view a copy of this license, visit <http://creativecommons.org/licenses/by-nc-sa/2.5/> or send a letter to Creative Commons, 559 Nathan Abbott Way, Stanford, California 94305, USA.

You may share copies or printouts of this scan freely. You may not sell copies or printouts.

Donated by

Judith Combs

11/2010



CORTICELLI MERCERIZED COTTONS



Crocheted Top for Foot Rest No. 688

The crocheted top for the foot rest measures about fifteen inches in diameter from point to point and is worked in single crochet in golden orange, with the flower sprays in deep green.

Materials: Corticelli Princess Pearl Crochet Cotton, Art. 455, Size 5, 5 balls Golden Orange No. 468 and 1 ball Dark Green No. 45. One No. 5 steel Crochet Hook.

Other attractive color combinations are: Rose Pink No. 239 with the flowers in Dark Green No. 45; Ecru No. 358 with the flowers in Blue No. 433; Linen No. 355 with the flowers in Brown No. 335, or Gray No. 384 with the flowers in Golden Orange No. 468.

Instructions: Begin at center with Golden Orange. Ch. 4, join, in the ring work 8 s.c.

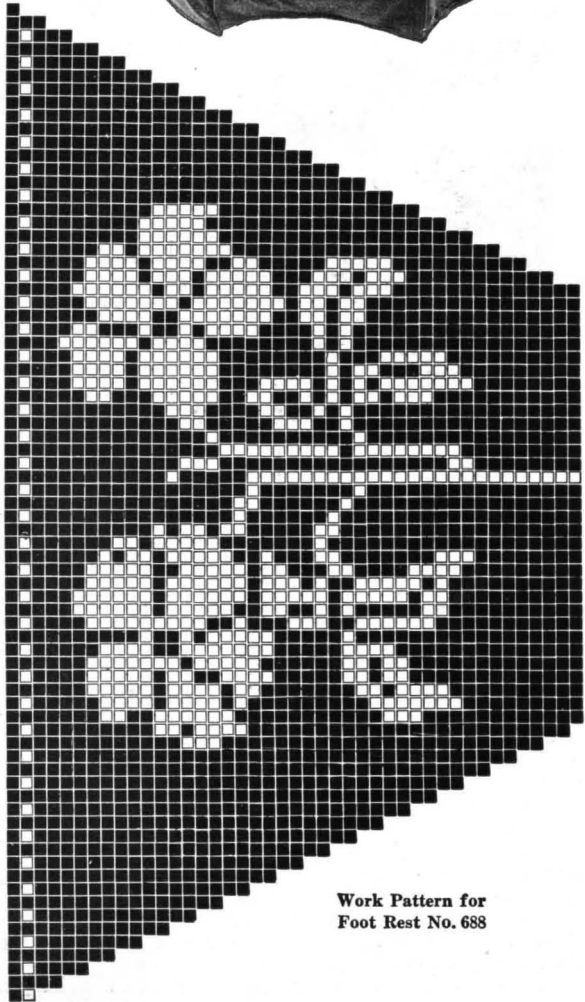
2d row: 1 s.c. in first st., picked up on the double thread, ch. 2, and repeat around.

3d row: 1 s.c. in each s.c., 2 s.c. with 1 ch. between in each hole.

4th row: 1 s.c. in each s.c., 2 ch. at each corner. Repeat third and fourth rounds alternately until 32 rounds have been made.

33d row: Begin the rose motif in this round, following the Work Pattern No. 688, working the rose in Green, as follows: Work to the fourteenth stitch of the first gore, and in making that stitch draw through with Green. Make the next stitch with Green, drawing through with Orange and letting the Green hang behind the work. Continue with Orange, and in every second gore begin the rose motif, taking a fresh Green thread for each gore. In working the following rounds, carry the Orange thread inside the Green stitches, and conceal the crossing Green threads in the same manner. In the sixty-ninth round make every second stitch across the plain gores with Green, and after it make one round of Orange, which completes the work on the plain gores. The remaining five rows are worked across the Rose gores alone, and each row must be fastened off at the end and the new row begun at the other end.

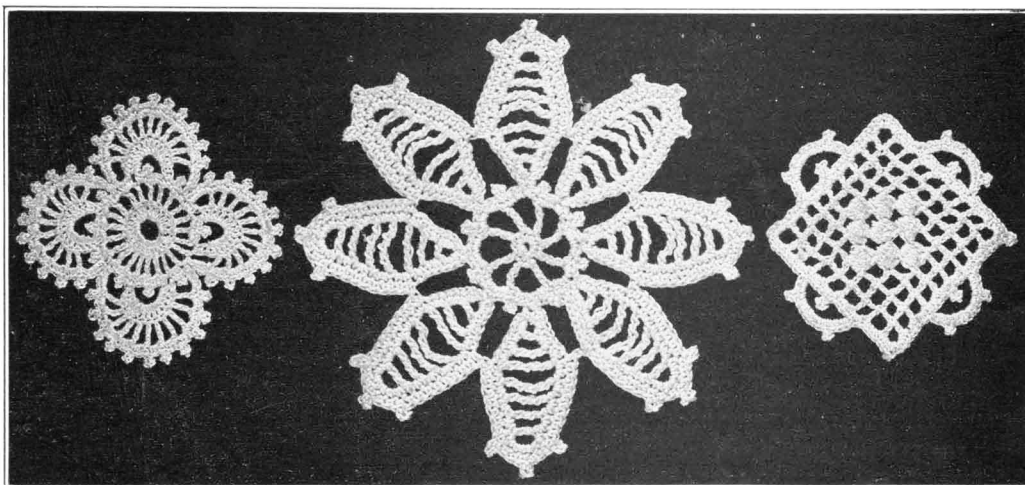
EDGE: Make 1 s.c. with Green, ch. 1, skip 1 st. of edge, 1 s.c. in next st. Drop Green loop from needle. With Orange make 1 s.c. in skipped stitch, in front of Green stitches, ch. 1, push Green loop and thread forward, 1 s.c. in next. * Drop Orange loop, pick up Green, ch. 1, push Orange loop and thread forward, 1 s.c. in next st. of edge, drop Green loop, repeat from *, working first with one color, then with the other, around entire edge. At the end join and fasten off, then darn the holes of each gore with two lengthwise threads of Green.



Work Pattern for
Foot Rest No. 688



CORTICELLI MERCERIZED COTTONS



Wheel Medallion No. 689a

Eight Petal Flower Medallion No. 689b

Diamond Medallion No. 689c

Three Medallions No. 689

Wheel Medallion No. 689a

The Wheel Medallion, if worked in the size cotton specified, will measure about 2½ inches in diameter.

Materials: Corticelli Mercerized Cordonnet, Art. 66, Size 60. One No. 14 steel Crochet Hook.

Instructions: Ch. 12, join in loop. Ch. 3, 21 d.c. into loop, join. *2d row:* Ch. 4, t. into last d.c. of last row, ch. 1, t. into next st., and repeat around, ch. 1, join (there should be 22 t., counting the ch. 4 as one). *3d row:* 3 s.c. over first 1 ch. of last row, p., 3 s.c. over next 1 ch., ch. 10, turn, and catch back to 1st s.c. made, 3 s.c. over 1 ch., turn, * 14 d.c. over 10 ch., 3 s.c. over next 1 ch. of center wheel, ch. 4, turn, 1 d.c. into 2d d.c., ch. 1, d.c. into next d.c., repeat until there are 11 d.c. with 1 ch. between, ch. 4, and catch over d.c. of first wheel, turn, 4 s.c. over 4 ch., p., 3 s.c. over next 1 ch., p., 3 s.c. over next 1 ch., p., repeat around, 4 s.c. over last 4 ch., fasten into center wheel (1 s.c., p., 2 s.c.) in first 1 ch., 3 s.c. over next 1 ch., 3 s.c., p., over next 1 ch., 3 s.c. over next 1 ch., ch. 10, turn, catch over d.c. of center wheel on the other side of p., turn, repeat from *.

Eight Petal Flower Medallion No. 689b

The Eight Petal Flower Medallion in the size cotton specified measures about 4 inches in diameter.

Materials: Corticelli Mercerized Cordonnet, Art. 66, Size 15. One No. 10 steel Crochet Hook.

Instructions: Ch. 7, join in circle. Ch. 1, 8 s.c. in circle, join. *2d row:* Ch. 9, t. in first s.c., * ch. 5, t. in next s.c., repeat from * until there are 8 t., counting the first 5 ch. as one t., ch. 5, join to 5th st. of 1st 9 ch. *3d row:* Ch. 1, 2 s.c. over 4 ch., ch. 22, t. into 8th st. from hook, ch. 1, d.t. in next 2d ch., ch. 1, 1 t. (thread around hook four times) into next 2d ch., ch. 1, 1 t. into next 2d ch., ch. 1, d.t. into next 2d ch., ch. 1, t. into next 2d ch., ch. 1, d.c. into next 2d ch., ch. 3, join to 1st st. after the 2 s.c. on ring, carry thread under petal and hook over, work 3 s.c. over 3 ch., 2 s.c. into each 1 ch. space to tip of petal, 8 s.c. over 8 ch., 2 s.c. into each 1 ch. space down other side, 3 s.c. over last 3 ch., join, 2 s.c. over 2 ch. section of center, p. over t., 2 s.c. into next section of center, and repeat petals all around, making 8 in all, with p. between each two. After last section of center is filled work 7 sl.sts. on side of 1st petal to 3d bar, then work * 1 s.c. into each of the next 8 s.c., p., 4 s.c. to top of point, p., 4 s.c. down opposite side, p., 8 s.c., carry thread across and join to next petal and repeat from * until the flower is complete, joining the last petal to the first one with a sl.st.

Diamond Medallion No. 689c

This medallion, if worked in the size cotton specified, will measure about 2½ inches in diameter.

Materials: Corticelli Mercerized Cordonnet, Art. 66, Size 50. One No. 10 steel Crochet Hook.

Instructions: Ch. 33. *1st row:* 9 op. *2d row:* 9 op. *3d row:* 4 op., then a Bean st. made as follows: thread over hook, take a stitch under the next 2 ch., thread over, take 5 more sts. in same space, drawing all the sts. up to same length, thread over and draw through all the sts. on hook, ch. 1 to fasten, d.c. in next d.c., 4 op. *4th row:* 3 op., Bean st., 1 op., Bean st., 3 op. *5th row:* 2 op., Bean st., 1 op., Bean st., 1 op., Bean st., 2 op. Follow pattern from illustration. **EDGE:** (2 s.c. over 2 ch., 1 s.c. over d.c.) in 1st 6 meshes with p. over center of 5th mesh, ch. 10, turn, catch back over 3d d.c. of previous row, turn, (3 s.c., p., 8 s.c., p., 3 s.c.) over loop, fill remaining meshes with s.c., making 5 s.c. in corner mesh. Work the remaining three sides in the same way.



CORTICELLI MERCERIZED COTTONS



Filet Crochet for Curtains No. 303

This is an attractive example of the beauty of filet crochet on curtains. The edging is sewed to the top of the curtain instead of to the bottom as is the usual custom, and rings are attached to the points for stringing on a rod. The edging measures about 4½ inches wide when finished, while the insertion is about an inch wider.

Materials: Corticelli Mercerized Cordonnet, in a color and size to match the material in the curtains. If a very fine material is selected, size 70 cotton will be found suitable; for a medium weight material select size 40 or 50 cotton, while if a very heavy net or scrim is selected for the curtains size 3 or size 5 cotton may be used. This cotton is furnished in Snow White, Linen No. 355, and Ecu No. 356 for curtains, and also in colors.



Edge for Curtains No. 303: Ch. 47 sts. *1st row:* 1 d.c. in 3d st., 13 op., 1 cl., d.c. in next st., ch. 6, turn. *2d row:* D.c. on each of last 2 sts. of 6 ch., 2 d.c. over last 2 d.c. in former row, 4 op., 4 cl., 6 op., d.c. over last d.c., ch. 3, turn.

3d row: 1 d.c., 5 op., 2 cl., ch. 2, skip 2 sts., s.c. in next st., ch. 2, skip 2 sts., d.c. in next, 2 cl., 3 op., 1 cl., d.c. over last d.c., ch. 6, turn. *4th row:* 2 d.c. over last 2 sts. of ch. and 2 d.c. over next 2 d.c. as in 2d row, 2 op., 2 cl., ch. 2, skip 2 sts., s.c. in next, ch. 2, skip 2, d.c. in next, ch. 5, skip the cross, d.c. over first d.c., ch. 2, skip 2 sts., s.c. in next, ch. 2, skip 2 sts., 2 cl. over first 2 op. meshes, 3 op., d.c. over last d.c., ch. 3, turn.

5th row: D.c. over d.c., 2 op., 1 cl., 1 cross, ch. 5, skip cross in row below, 1 cross, ch. 5, 1 cross, 1 cl., 1 op., 1 cl., 1 d.c., ch. 6, turn. *6th row:* 4 d.c. as before, 2 op., 1 cl., ch. 5, 1 cross over 5 ch. of row below, ch. 5, 1 cross over next 5 ch., ch. 5, 1 cl., 2 op., 1 d.c., ch. 4, turn.

7th row: 1 d.c., 2 op., 1 cl., 1 cross, 5 ch., 1 cross, 5 ch., 1 cross, 1 cl., 2 op., 5 d.c., ch. 6, and turn.

8th row: This is the middle of point. 4 d.c., 3 op., 1 cl., 5 ch., 1 cross, 5 ch., 1 cross, 5 ch., 1 cl., 2 op., 2 d.c., ch. 3, and turn.

9th row: Like 7th, ending with ch. 3, turn. *10th row:* Like 6th row. *11th row:* Like 5th, with ch. 3 at end to turn. *12th row:* Like 4th. *13th row:* Like 3d, with 3 ch. at end. *14th row:* Like 2d. *15th row:* Like 1st. Repeat from 2d row.

Insertion for Curtains No. 303: Ch. 64 sts. *1st row:* 1 cl., 7 op., 4 cl., 7 op., 1 cl. *2d row:* 1 cl., 6 op., 2 cl., 2 op., 2 cl., 6 op., 1 cl. *3d row:* 1 cl., 5 op., 2 cl., 1 op., 2 cl., 1 op., 2 cl., 5 op., 1 cl. *4th row:* Like 3d. *5th row:* Like 2d. *6th row:* Like 1st.

7th row: 1 cl., 5 op., 3 cl., 1 cross, 3 cl., 5 op., 1 cl.

8th row: 1 cl., 4 op., 2 cl., 1 cross, 5 ch., 1 cross, 2 cl., 4 op., 1 cl.

9th row: 1 cl., 3 op., 1 cl., 1 cross, 5 ch., 1 cross, 5 ch., 1 cross, 1 cl., 3 op., 1 cl.

10th row: 1 cl., 3 op., 1 cl., 5 ch., 1 cross, 5 ch., 1 cross, 5 ch., 1 cl., 3 op., 1 cl.

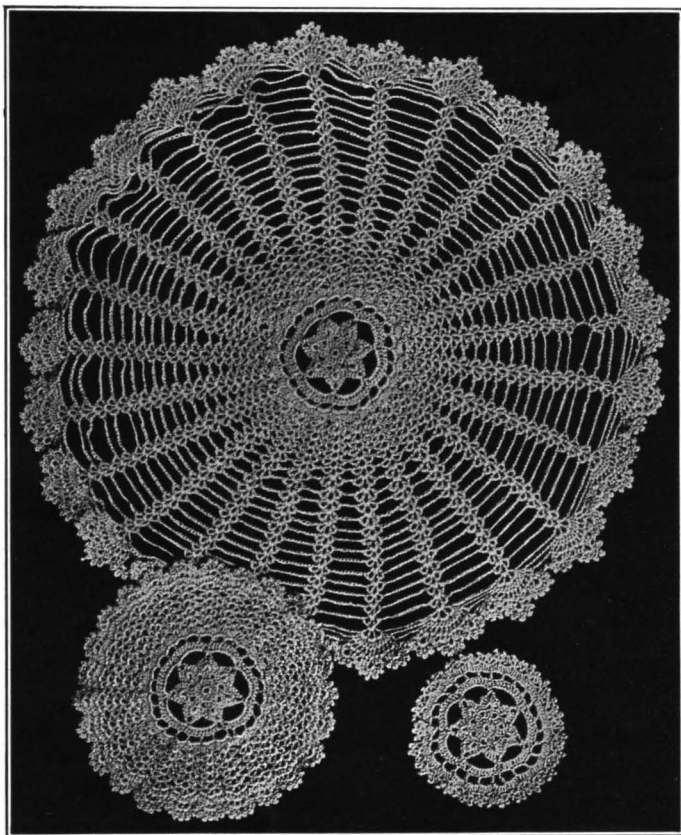
11th row: Like 9th. *12th row:* Like 10th. *13th row:* Like 9th. *14th row:* Like 10th. *15th row:* Like 9th. *16th row:* Like 8th. *17th row:* Like 7th. *18th row:* Like 6th. Repeat from 2d row.



CORTICELLI MERCERIZED COTTONS



Bungalow Breakfast Set Crocheted in Blue No. 690a



Bungalow Breakfast Set No. 690a

9 inch Doily

22 inch Centerpiece

5 inch Doily

Materials: Princess Pearl Cotton, Art. 453, Size 3, 10 balls Blue No. 433. One No. 8 steel Crochet Hook.

This quantity of material is sufficient for the entire set, consisting of centerpiece and six each of the large and small doilies.

CENTERPIECE: Chain 5, join. *1st row:* Ch. 3 for the first d. c., make 14 d. c. in ring (counting the ch. of 3 as one), join to top of 3 ch. *2d row:* Ch. 3, 1 d. c. in next d. c., * ch. 2, d. c. in same stitch as last d. c., 2 d. c. in next 2 sts., repeat from * 6 times, ch. 2, join to top of 3 ch., making 7 points. *3d row:* * S. c. in next d. c., ch. 4, s. c. in same stitch, 3 s. c. over ch. of 2, skip 1 d. c. and repeat from * 7 times, ending with 2 s. c. over ch. of 2. *4th row:* * Shell of 4 d. c., 4 ch. and 4 d. c. over ch. of 4 in last row, fasten with s. c. in second of the 3 s. c., repeat from * 7 times, joining in s. c. where the row started.

5th row: Sl. st. to top of 1st shell, * ch. 10, fasten in next shell, repeat from * 7 times. *6th row:* Ch. 3, 10 d. c. over ch. of 10, 1 d. c. over s. c. where chain is fastened, repeat all around, join. *7th row:* Ch. 6, * skip 2 d. c., d. c. in next, ch. 3, repeat from * all around, ch. 3, join to 3d st. of 6 ch. *8th row:* Shell of 3 d. c. (starting with 3 ch. for first d. c.), 2 ch. and 3 d. c. over each 3 ch. of last row, join to top of 1st 3 ch.

9th row: Sl. st. to center of 1st shell, ch. 5, 1 d. c., ch. 2, 1 d. c., ch. 2, 1 d. c. all in same shell, * shell of 4 d. c., separated by 2 ch., in next shell, repeat all around and join to 3d st. of 5 ch. *10th, 11th, 12th, and 13th rows:* Like 9th. *14th row:* Like 10th row with 1 ch. between shells. *15th to 28th rows:* Like 14th row, increasing the chain between shells 1 st. each row.

28th row: Make 15 chains between shells, join into the 3d ch. of the ch. of 5 at beginning of row and sl. st. to center of shell, ch. 4, 3 d. c. in center of same shell with 1 ch. between each, ch. 14, 4 d. c. in top of next shell with ch. of 1 between each and repeat all around, join into 3d st. of 4 ch. at beginning of row, sl. st. into space over 1st ch., ch. 3, make 3 d. c. in same space (the 3 ch. standing for 1 d. c.), 4 d. c. into next space, 4 d. c. into next space, ch. 10, make 4 d. c. into each of the 3 spaces of next shell and repeat all around, joining to top of ch. of 3 at beginning of row, ch. 4, 1 d. c. into 2d d. c. of previous row, ch. 1, 1 d. c. in next and repeat all around this shell, making 12 d. c. with ch. of 1 between each, ch. 7, making 1 d. c. over each d. c. with ch. of 1 between each d. c. and ch. of 7 between each shell over next shell, repeat all around, join to top of ch. of 3 at beginning.

Sl. st. into 1st space, ch. 3, 1 d. c. in next space, ch. 2, 1 d. c. into same space, 1 d. c. into each of the next 2 spaces, ch. 2, 1 d. c. into same space and repeat across shell, ch. 5. Make 1 d. c. into first space of next shell and repeat the same as first shell with ch. of 5 between each shell all around, joining to top of ch. of 3 at beginning. Sl. st. into center of shell over the ch. of 2, ch. 5, fasten with sl. st. into the 3d ch. from hook, ch. 1, 1 d. c. over ch. of 2, ch. 3, fasten into top of d. c. to make picot, ch. 1, d. c. in same space, ch. 3, picot, ch. 1, d. c. in same space, ch. 3, picot, ch. 1, s. c. over next ch. of 2, ch. 1, d. c. over next ch. of 2, ch. 3, picot and repeat all around, making 5 d. c. over ch. of 2, fasten down with a s. c. in the next ch. of 2.



CORTICELLI MERCERIZED COTTONS



LARGE DOILY No. 690a: Chain 5, join. *1st row:* Ch. 3 for a d.c., make 14 d.c. in ring (counting ch. of 3 as 1), join to top of 3 ch. *2d row:* Ch. 3, 1 d.c. in next d.c., * ch. 2, d.c. in same stitch as last d.c., 2 d.c. in next 2 sts., repeat from * 6 times, ch. 2, join to top of 3 ch., making 7 points. *3d row:* * S.c. in next d.c., ch. 4, s.c. in same stitch, 3 s.c. over ch. of 2, skip 1 d.c. and repeat from * 7 times, ending with 2 s.c. over ch. of 2.

4th row: * Shell of 4 d.c., 4 ch. and 4 d.c. over ch. of 4 in last row, fasten with s.c. in second of the 3 s.c., repeat from * 7 times, joining in s.c. where the row started. *5th row:* Sl.st. to top of 1st shell, * ch. 10, fasten in next shell, repeat from * 7 times. *6th row:* Ch. 3, 10 d.c. over ch. of 10, 1 d.c. over s.c. where chain is fastened, repeat all around, join. *7th row:* Ch. 6, * skip 2 d.c., d.c. in next, ch. 3, repeat from * all around, ch. 3, join to 3d st. of 6 ch. *8th row:* Shell of 3 d.c. (starting with 3 ch. for first d.c.), 2 ch. and 3 d.c. over each 3 ch. of last row, join to top of 1st 3 ch.

9th row: Sl.st. to center of 1st shell, ch. 5, 1 d.c., ch. 2, 1 d.c., ch. 2, 1 d.c. all in same shell, * shell of 4 d.c., separated by 2 ch., in next shell, repeat all around and join to 3d st. of 5 ch. *10th row:* Ch. 3, using this as the 1st d.c., 2 d.c. in same place, 3 d.c. in next and repeat 3 d.c. over every ch. of 2 all around, join. *11th row:* Ch. 4, 1 d.c. in 2d space, ch. 1, skip 1 space, 1 d.c. in next, ch. 2, 1 d.c. in next, ch. 1, skip 1 space, 1 d.c. in next, ch. 1, 1 d.c. in next. This completes the one shell. Work the rest of the way the same, join.

12th row: 1 d.c. over the ch. of 2 in center of shell, ch. 3, fasten at top of d.c. just made for picot, ch. 1, d.c. in same place with picot, repeat until there are 5 d.c. in this space. Fasten with s.c. over space between shells, ch. 1 and make next shell the same. Repeat all around.

SMALL DOILY No. 690a: Chain 5, join. *1st row:* Ch. 3 for a d.c., make 14 d.c. in ring (14 d.c. counting ch. of 3 as 1), join to top of 3 ch. *2d row:* Ch. 3, 1 d.c. in next d.c., * ch. 2, d.c. in same stitch as last d.c., 2 d.c. in next 2 sts., repeat from * 6 times, ch. 2, join to top of 3 ch., making 7 points. *3d row:* * S.c. in next d.c., ch. 4, s.c. in same stitch, 3 s.c. over ch. of 2, skip 1 d.c. and repeat from * 7 times, ending with 2 s.c. over ch. of 2.

4th row: * Shell of 4 d.c., 4 ch. and 4 d.c. over ch. of 4 in last row, fasten with s.c. in second of the 3 s.c., repeat from * 7 times, joining in s.c. where the row started.

5th row: Sl.st. to top of 1st shell, * ch. 10, fasten in next shell, repeat from * 7 times. *6th row:* Ch. 3, 10 d.c. over ch. of 10, 1 d.c. over s.c. where chain is fastened, repeat all around, join. *7th row:* Ch. 6, * skip 2 d.c., d.c. in next, ch. 3, repeat from * all around, ch. 3, join to 3d st. of 6 ch.

8th row: Shell of 3 d.c. (starting with 3 ch. for first d.c.), 2 ch. and 3 d.c. over each 3 ch. of last row, join to top of 1st 3 ch.

9th row: 3 d.c. over each ch. of 2 with picot at top of each d.c. with 1 ch. between each, fasten between the shells of 3 with a s.c. Work all around in this manner, break thread.

Marguerite Centerpiece No. 686, continued from page 23.

4th row: Sl.st. to 2d st. of 1st 3 ch. in 3d row, ch. 1, s.c. in next 3 ch., * ch. 3, s.c. on next, repeat, making 57 three-chains, ch. 1, d.c. on last 3 ch., ch. 8, skip 7 sts. of 18 ch., d.c. in next, ch. 3, skip 2 sts., d.c. in next, ch. 8, d.c. on 1st 3 ch. of next scallop, ch. 1, s.c. in next, repeat from *.

5th row: Begin with d.c. on 1st 3 ch., ch. 1, s.c. on next, * ch. 3, s.c. on next, repeat, making 54 three-chains, ch. 1, d.c. in last 3 ch., ch. 8, d.t. in d.c., ch. 19, d.t. in next d.c., ch. 8, d.c. on 1st 3 ch. of next scallop, ch. 1, s.c. on next 3 ch., repeat from *. After this row the scallops are finished separately. Fasten thread securely and cut. *6th row:* Join thread in last d.t., ch. 15, d.c. in first 2 three-chains together, ch. 1, s.c. in 3d three-chain, ch. 3, s.c. in next, repeat, making 49 three-chains, ch. 1, d.c. in last 2 three-chains together, ch. 8, d.t. on d.t., ch. 15, turn.

7th row: D.c. in first 2 three-chains together, ch. 1, s.c. on next 3 ch., ch. 3, s.c. on next, repeat, making 44 three-chains, ch. 1, d.c. in last 2 three-chains together, ch. 8, d.t. in 9th st. of 15 ch., ch. 15, turn.

8th row: D.c. in first 2 three-chains together, ch. 1, s.c. in next, ch. 3, s.c. in next, repeat, making 39 three-chains, ch. 1, d.c. in last 2 three-chains together, ch. 8, d.t. in 9th st. of 15 ch., ch. 15, turn. *9th row:* D.c. in first 2 three-chains together, ch. 1, s.c. in next, ch. 3, s.c. in next, repeat making 34 three-chains, ch. 1, d.c. in last 2 three-chains together, ch. 8, d.t. in 9th st. of 15 ch., ch. 15, turn. *10th row:* D.c. in first 2 three-chains together, ch. 1, s.c. in next, ch. 3, s.c. in next, repeat, making 29 three-chains, ch. 1, d.c. in last 2 three-chains together, ch. 8, d.t. in 9th st. of 15 ch., ch. 15, turn.

11th row: D.c. in first 2 three-chains together, ch. 1, s.c. in next, ch. 3, s.c. in next, repeat, making 24 three-chains, ch. 1, d.c. in last 2 three-chains together, ch. 8, d.t. in 9th st. of 15 ch., ch. 6, turn.

12th row: * Thread over needle 5 times, insert needle under first 3 ch., thread over needle, draw through, thread over needle, draw through 2 sts., thread over needle, insert needle under next 3 ch., thread over needle, take off 2 sts., thread over needle, take off 3 sts., (thread over needle, take off 2 sts.) 4 times, ch. 6, repeat from * 11 times, sl.st. in 9th st. of 15 ch., fasten thread securely and cut. Begin with 6th row of crescent and finish other scallops the same way.

EDGE: S.c. in first 6 ch. of scallop, * ch. 4, d.c. on l.t., (ch. 6, sl.st. in top of d.c. just made) 3 times, ch. 4, s.c. on next ch., repeat around scallop, ch. 4, s.c. in 3d st. of 19 ch., make 1 h.d., 1 d.c., 2 t., p. (3 sts.) in top of last t., 4 t., p., 4 t., ch. 10, drop st. and pick it up through the 1st st. in ch. to form a ring, make in ring (4 s.c., p.) 3 times, 4 s.c., sl.st. in last t., make on rest of ch. (4 t., p.) twice, 2 t., 1 d.c., 1 h.d., 1 s.c. in 3d st. of ch., ch. 4, s.c. on 6 ch. of next scallop, repeat from *.



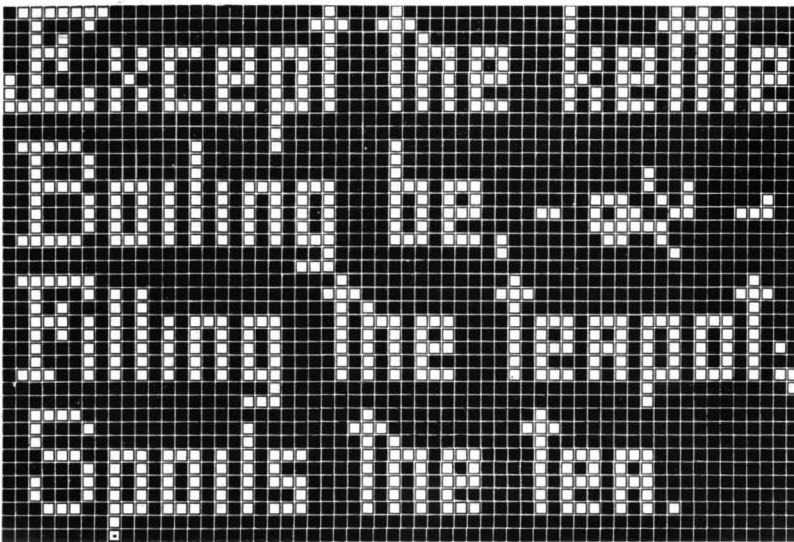
CORTICELLI MERCERIZED COTTONS



165 Meshes 40 Inches Long x 34 Inches Wide

Luncheon Cloth of Filet Crochet No. 691

Materials: Corticelli Mercerized Cordonnet, Art. 66, 20 balls White, Size 60, for the entire design; or for the edge alone it will require 3 balls. One No. 14 steel Crochet Hook.



Work Pattern No. 691a 30

Instructions: Foundation chain of 501 sts. Commence with the first row of work pattern on opposite page. This work pattern gives half the width of the design but there is not room for quite half the length, so when the 22d row is reached refer to illustration and note that there are *two* of the upright posts at the center of the rose spray at the top of the design; also, when working the single roses above and below the lettering, be careful that they face each other. For the lettering refer to Work Pattern No. 691a.



CORTICELLI MERCERIZED COTTONS



EDGE: Ch. 16, turn, 1 s.c. in 7th st. from needle, ch. 3, skip 2, 1 d.c. in next, ch. 3, skip 2, 1 s.c., ch. 3, skip 2, 1 d.c., 1 d.c. in last st., this makes 2 d.c. over last 2 ch. sts., ch. 3, turn. 2d row: 1 d.c. on d.c., ch. 5, 1 d.c. over next d.c., 2 d.c. under ch. of 3, 3 d.c. under next ch., 1 d.c. in 3d s.c. of previous row, ch. 3, turn. 3d row: 6 d.c. on 6 d.c., ch. 3, 1 s.c. under ch. of 5, ch. 3, 1 d.c. on d.c., 1 d.c. on last d.c., ch. 3, turn. 4th row: D.c. on d.c., ch. 5, 7 d.c. on 7 d.c., ch. 8, turn. 5th row: 1 d.c. on 4th st. of ch., 4 d.c. in next 4 sts., 1 d.c. over 1st d.c. on last row, ch. 3, 1 s.c. in 4th d.c., ch. 3, 1 d.c. on last d.c., ch. 3, 1 s.c. under ch. of 5, ch. 3, 1 d.c. on d.c., 1 d.c. on last d.c., ch. 3, turn. 6th row: D.c. on d.c., ch. 5, 1 d.c. on d.c., ch. 5, 7 d.c. on 7 d.c. of previous row, ch. 3, turn. 7th row: 6 d.c. on 6 d.c. of previous row, ch. 3, 1 s.c. under ch. of 5, ch. 3, 1 d.c. on d.c., ch. 3, 1 s.c. under ch. of 5, ch. 3, 1 d.c. on d.c., 1 d.c. on last d.c., ch. 3, turn. 8th row: 1 d.c. on d.c., ch. 5, 1 d.c. on d.c., 2 d.c. over 3 ch., 3 d.c. over next 3 ch., 1 d.c. in first d.c. of previous row, ch. 3, turn. 9th row: Same as 3d row. 10th row: D.c. on d.c., ch. 5, 7 d.c. in 7 d.c., then edge; ch. 3, s.c. between first 2 rows, ch. 3, s.c. between next 2 rows, ch. 4, s.c. over 4th d.c. of center point, ch. 3, s.c. into corner, ch. 3, s.c. between first 2 rows, ch. 3, s.c. between next 2 rows, ch. 3, fasten in corner, ch. 3, s.c. over 4th d.c., ch. 4, s.c. between first 2 rows of next point, ch. 3, s.c. between the next 2 rows, ch. 3, fasten in corner, ch. 3, turn, s.c. over ch. of 3 of previous row, all the way around to first 3 ch. made for edge. 11th row: Ch. 3, 1 d.c. into first d.c. of last row, ch. 3, 1 s.c. over 4th d.c., ch. 3, 1 d.c. into last d.c. of the 7 d.c., ch. 3, 1 s.c. under 5 ch., ch. 3, 2 d.c. into the last 2 d.c., ch. 3, turn. 12th row: 1 d.c. over d.c., ch. 5, 1 d.c. into next d.c., ch. 5, 1 d.c. into next d.c., ch. 7, turn. 2d scallop: 1 s.c. under 5 ch., ch. 3, 1 d.c. into next d.c., ch. 3, 1 s.c. under 5 ch., ch. 3, 2 d.c. into 2 d.c., ch. 3, turn. 2d row: 1 d.c. on d.c., ch. 5, 1 d.c. into d.c., 2 d.c. under next 3 ch., 3 d.c. under next ch. and d.c. into the 3 ch. of the previous row, ch. 3, turn; repeat from 3d row.



CORTICELLI MERCERIZED COTTONS



Butterfly Apron No. 692



The butterfly edge is about $2\frac{3}{4}$ inches deep. The apron is about 19 inches wide and requires nine butterfly scallops. If a wider apron is required, make an extra scallop on each side of the center butterfly.

Materials: Corticelli Mercerized Cordonnet, Art. 66, 2 balls White, Size 70. No. 12 steel Crochet Hook.

Instructions: Ch. 45.
1st row: 13 op. Follow Work Pattern No. 692, making four of the first scallop, then make the center scallop, then four of the third scallop. Finish edge with s.c. and picot.

BEADING. The beading for the top of the apron measures about $1\frac{1}{2}$ inches in width, and a length of $12\frac{1}{2}$ inches is required.

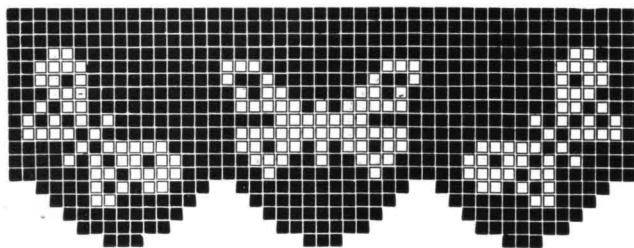
Ch. 30. *1st row:* 8 op.
2d row: 8 op. *3d row:* 8 op.
4th row: 1 op., ch. 18. Skip 5 d.c., d.c. in next d.c., 1 op. *5th, 6th, 7th, 8th, 9th and 10th rows:* 8 op. *11th row:* Like 4th row. Repeat from 1st row for length required. Finish top and sides with s.c. with p. over every second d.c., and continue down sides of apron.

Edging No. 272c

Materials: Corticelli Mercerized Cordonnet, Art. 66, Size 40. No. 12 steel Crochet Hook.

Instructions: This pattern measures about $1\frac{1}{4}$ inches in width. Make chain a little longer than the length desired. *1st row:* D.c. in 6th st., * ch. 2, skip 2 sts., d.c. in next st.; repeat from * to end of row, ch. 5, turn.

2d row: Work in open mesh, same as first row.

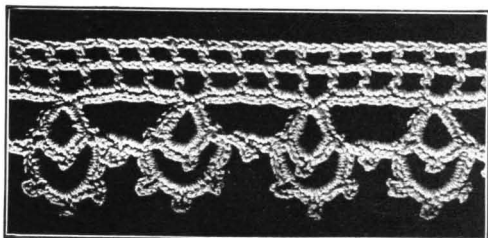


Work Pattern No. 692

3d row: 2 s.c. in first mesh, ch. 10, turn, sl.st. in last s.c. made, turn, * (4 s.c., ch. 4, 4 s.c., ch. 4, 4 s.c., ch. 4, 4 s.c.) in ring just made, 2 s.c. in same mesh, 4 s.c. in each of next three meshes, 2 s.c. in next mesh, ch. 10, turn and join to last s.c. made, and repeat from * to end of row.

4th row: Sl.st. up to first picot, ch. 11, fasten in third p. of ring, ch. 4, fasten with sl.st. in first p. of next ring; repeat to end of row, turn.

5th row: (4 s.c., ch. 5, 4 s.c., ch. 5, 4 s.c., ch. 5, 4 s.c.) over 11 ch., fasten with sl.st. in p. of preceding row, (3 s.c., ch. 5, 3 s.c.) over 4 ch.; repeat to end of row.



Edging No. 272c



CORTICELLI MERCERIZED COTTONS



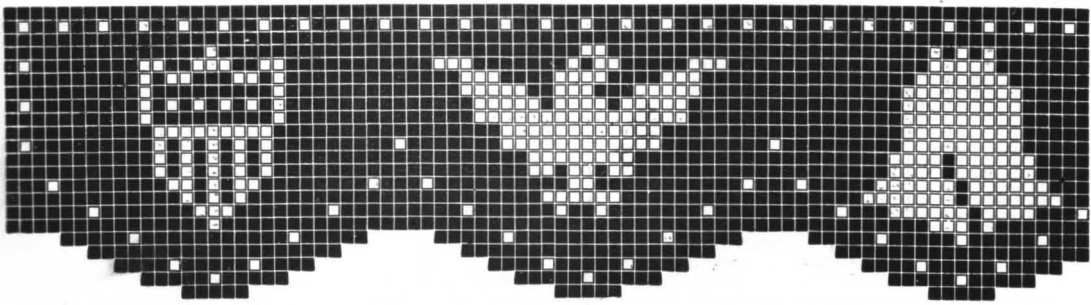
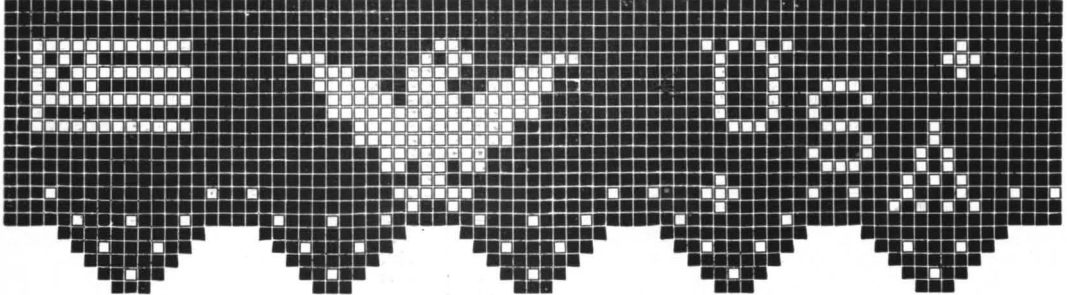
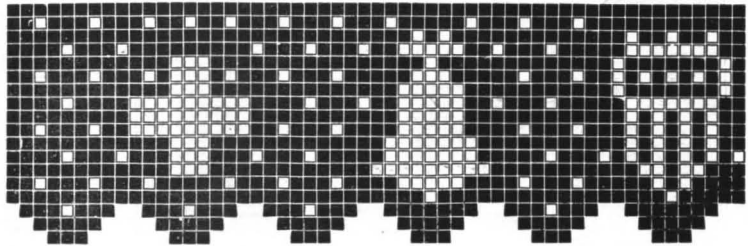
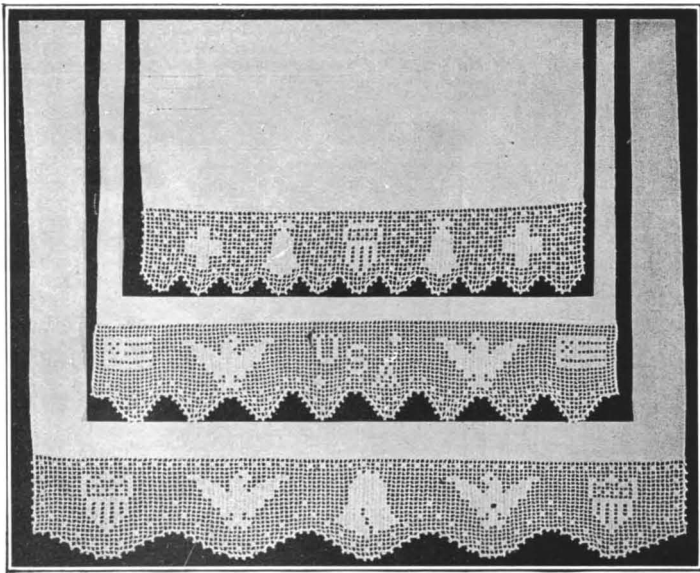
Liberty Towels No. 694

Materials: Corticelli Mercerized Cordonnet, Art. 66, Size 40, for the first towel 1 ball, for the second towel 1 ball, and for the third towel 2 balls. No. 12 steel Crochet Hook.

Towel No. 694a. The crocheted edge for the first towel, with the Red Cross design at each end, measures about 3 inches deep and 15 inches wide. For the foundation, chain 51 sts. The first row contains 15 open meshes.

Towel No. 694b. The crocheted edge on the second towel, with the letters "U. S. A." in the center, is 3 1/4 inches deep and about 18 inches wide. For the foundation, chain 57 sts. 1st row: 17 open meshes.

Towel No. 694c. The crocheted edge for the third towel, with the Liberty Bell in the center, measures 3 1/2 inches deep and about 22 inches wide. For foundation, chain 57 sts. 1st row: 17 open meshes.

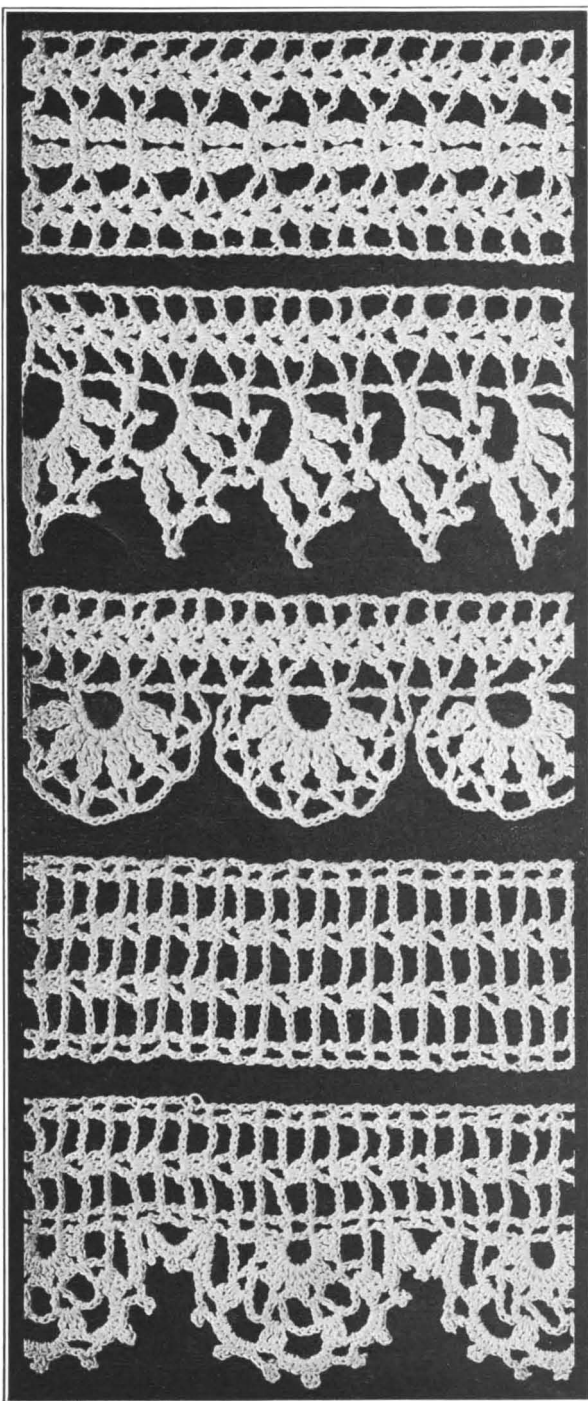




CORTICELLI MERCERIZED COTTONS



Edgings and Insertions Nos. 663 and 664



This group shows effective patterns to work in rather coarse cotton, to use on medium or heavy weight linen and similar materials. Insertion No. 663 may be used either with Edge No. 663a or 663b. Insertion No. 664 is intended to be used with Edge No. 664a.

No. 663

Materials: Corticelli Mercerized Cordonnet, Art. 66, Size 10. No. 10 steel Crochet Hook.

Cluny Insertion No. 663. This pattern measures 2 inches wide. Ch. 25. *1st row:* 2 d.c. in 9th st. from needle, ch. 2, 2 d.c. in same st., ch. 3, skip 3 sts., 6 s.c. in next 6 sts., ch. 3, skip 3 sts., 2 d.c. in next, ch. 2, 2 d.c. in same st., ch. 2, d.c. in 3d st. of ch., ch. 5, turn. *2d row:*

No. 663a

* 2 d.c. on 2 ch., ch. 2, 2 d.c. on same ch., ch. 4, make Cluny group of 3 sts. (keep last st. of each on needle, thread over, pull through all sts. at once) in 2d s.c., ch. 2, skip 2 s.c., Cluny group in 3d st., ch. 4, 2 d.c. on 2 ch., ch. 2, 2 d.c. on same ch., ch. 2, d.c. in 3d st. of ch., ch. 5, turn. *3d row:* 2 d.c. on 2 ch., ch. 2, 2 d.c. on same ch., ch. 3, 2 s.c. on 4 ch., 2 s.c. on 2 ch., 2 s.c. on 4 ch., ch. 3, 2 d.c. on 2 ch., ch. 2, 2 d.c. on same ch., ch. 2, d.c. in 3d st. of ch., ch. 5, turn; repeat from *.

No. 663b

Cluny Edge No. 663a. This pattern measures about 2 inches wide. Ch. 21. *1st row:* 2 d.c. in 9th st., ch. 2, 2 d.c. in same st., ch. 3, skip 3 sts., t. in next, ch. 9, sl.st. in 8th st. of chain, turn. *2d row:* * 14 s.c. on 9 ch., s.c. on t., ch. 3, 2 d.c. on 2 ch., ch. 2, 2 d.c. on same ch., ch. 2, d.c. in 3d st. of ch., ch. 5, turn. *3d row:* 2 d.c. on 2 ch., ch. 2, 2 d.c. on same ch., ch. 3, t. in 1st s.c., * ch. 4, skip 2 s.c., Cluny group of 3 t. in 3d (keep last of each on needle, thread over and take off all at once), repeat from * 4 times, ch. 1, turn. *4th row:* S.c. on 4 ch., ch. 2, p., ch. 2, 3 s.c. on same ch., (ch. 2, p., ch. 2, 3 s.c. on next ch.) 3 times, s.c. on t., ch. 3, 2 d.c. on 2 ch., ch. 2, 2 d.c. on same ch., ch. 5, turn. *5th row:* 2 d.c. on 2 ch., ch. 2, 2 d.c. on same ch., ch. 3, t. in 1st s.c., ch. 9, sl.st. in center s.c. between 1st and 2d picots; repeat from *.

No. 664

Cluny Edge No. 663b. This pattern measures about 2 inches wide. Ch. 15 sts. *1st row:* 2 d.c. in 9th st. from needle, ch. 2, 2 d.c. in same st., ch. 3, skip 3 sts., t. in next, turn. *2d row:* S.c. on t., ch. 3, 2 d.c. on 2 ch., ch. 2, 2 d.c. on same ch., ch. 2, d.c. in 3d st. of ch., ch. 5, turn. *3d row:* 2 d.c. on 2 ch., ch. 2, 2 d.c. on same ch., ch.

No. 664a



CORTICELLI MERCERIZED COTTONS



3, t. ons.c., turn. *4th row:* S.c. on t., ch. 3, 2 d.c. on 2 ch., ch. 2, 2 d.c. on same ch., ch. 2, d.c. in 3d st. of ch., ch. 5, turn. *5th row:* 2 d.c. on 2 ch., ch. 2, 2 d.c. on same ch., ch. 3, t. on s.c., ch. 10, s.c. in preceding t., ch. 1, turn. *6th row:* 13 s.c. on 10 ch., s.c. on t., ch. 2, 2 d.c. on 2 ch., ch. 2, 2 d.c. on same ch., ch. 2, d.c. in 3d st. of ch., ch. 5, turn. *7th row:* 2 d.c. on 2 ch., ch. 2, 2 d.c. on same ch., ch. 3, t. on s.c., * ch. 4, skip 1 s.c., make a Cluny cluster of 3 t. (keep last st. of each on needle, thread over and pull through all at once) in next st., repeat from * 5 more times (making in all 6 Cluny clusters), ch. 4, sl.st. in t., turn. *8th row:* * Ch. 5, d.c. on first 4 ch., d.c. on next 4 ch., repeat from * 5 more times, ch. 5, s.c. on t., ch. 3, 2 d.c. on 2 ch., ch. 2, 2 d.c. on same ch., ch. 2, d.c. in 3d st. of ch., ch. 5, turn; repeat from beginning.

Insertion No. 664. This pattern measures 2 inches wide. Ch. 25. *1st row:* D.c. in 6th st. from needle, (ch. 4, skip 4 sts., d.c. in next, ch. 2, d.c. in same st.) twice, ch. 4, skip 4 sts., d.c. in next, ch. 1, skip 1 st., d.c. in next, ch. 4, turn. *2d row:* * D.c. on d.c., (ch. 4, 3 d.c. on 2 ch.) twice, ch. 4, d.c. on d.c., d.c. in 2d st. of ch., ch. 4, turn. *3d row:* D.c. on d.c., (ch. 4, d.c. in center d.c. of cluster, ch. 2, d.c. in same st.) twice, ch. 4, d.c. on d.c., d.c. in 2d st. of ch., ch. 4, turn; repeat from *.

Edge No. 664a. This pattern measures 2½ inches wide. Ch. 18. *1st row:* D.c. in 6th st. from needle, ch. 4, skip 4 sts., d.c. in next, ch. 2, d.c. in same st., ch. 4, skip 4 sts., d.c. in next, ch. 1, skip 1 st., d.c. in next, ch. 4, turn. *2d row:* D.c. in 2d d.c., ch. 4, 3 d.c. under 2 ch., ch. 4, d.c. on d.c., ch. 1, d.c. in 2d st. of ch., ch. 4, turn. *3d row:* D.c. on 2d d.c., ch. 4, d.c. in center d.c., ch. 2, d.c. in same d.c., ch. 4, d.c. on d.c., ch. 1, d.c. on 2d st. of ch., ch. 4, turn. *4th row:* D.c. on d.c., ch. 1, d.c. on d.c., ch. 4, 3 d.c. on 2 ch., ch. 4, d.c. on d.c., ch. 1, d.c. in 2d st. of ch., ch. 4, turn. *5th row:* Like 3d row to scallop; make on 8 ch. (3 d.c., ch. 3) 4 times, 3 d.c., sl.st. over ch. to preceding or 2d row, turn. *6th row:* (Ch. 4, d.c. on 3 ch., ch. 2, d.c. on same ch.) 4 times, ch. 4, d.c. in 4th d.c., ch. 1, continue row like 2d. *7th row:* Like 3d to scallop, (ch. 6, 3 d.c. on 2 ch.) 4 times, ch. 6, sl.st. in preceding row, turn. *8th row:* * Make on 6 ch.,—4 s.c., p. of 3 sts., 3 s.c.,—ch. 2, p. of 3 sts., ch. 2, repeat from * 3 more times, 4 s.c., p., 3 s.c., sl.st. in d.c., ch. 4, d.c. on d.c., ch. 4, and finish out row like 4th.

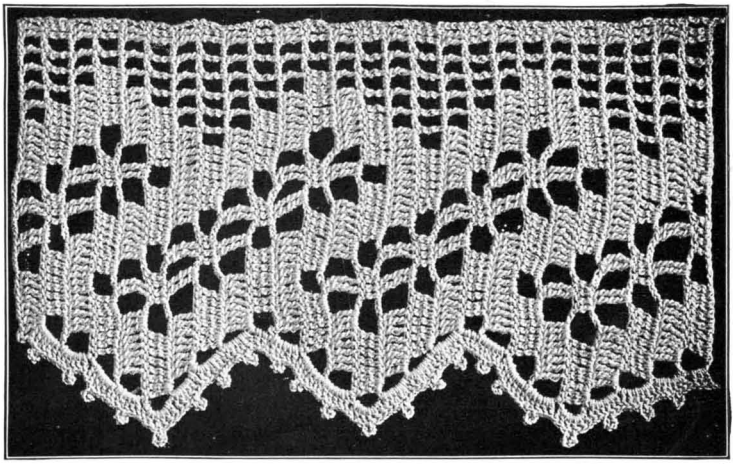
Make 5 more rows, ch. 8 for next scallop and continue as for preceding scallop but before last row on scallop ch. 8 for small scallop, turn, make 5 s.c., p., 4 s.c. on 8 ch., sl.st. on d.c., then make last row of large scallop.

Wide Edge in Filet Crochet No. 363

This edge is about four inches deep and suitable for table runners, pillow covers, dresser scarfs, etc. On a linen bedspread it may be used with an insertion of the same pattern. To make the insertion work below the design in open filet meshes the same as on the upper edge.

Materials: Corticelli Mercerized Gordonnet, Art. 66, Size 30. One No. 12 steel Crochet Hook.

Instructions: Ch. 52. *1st row:* 1 t. in 10th st. from hook, t. in next 7 sts., ch. 4, skip 4, 4 d.c., ch. 4, skip 4, 8 t., ch. 2, skip 2, t., ch. 2, skip 2, t., ch. 2, skip 2, t., ch. 2, skip 2, 3 t., ch. 4, turn. *2d row:* 2 t., 4 op., ch. 2, 5 t. over last 5 t. and 3 t. in open mesh, ch. 4, 2 t. in center of closed block, ch. 4, 2 t. in open mesh, ch. 4, 5 t. over last 5 t. and 3 t. in loop, ch. 2, t. in same loop, ch. 8, turn. *3d row:* 3 t. in loop and 5 t. over first 5 t., ch. 4, skip 6 sts., 4 d.c., ch. 4, skip 6 sts., 8 t., 6 open, 2 t., ch. 3, turn.



Wide Edge in Filet Crochet No. 363

4th row: 2 t., 5 op., 4 cl., ch. 4, 2 t. over center of closed block, ch. 4, 2 t. over open mesh, ch. 4, 5 t. over last 5 t., 3 t. in loop, ch. 2, t. in same loop, ch. 8, turn. *5th row:* 3 t. in loop and 5 t. over 5 t., ch. 4, skip 6 sts., 4 d.c., ch. 4, skip 6 sts., 8 t., ch. 4, skip 4 t., 8 t., 4 op., 2 t., ch. 4, turn. *6th row:* 2 t., 3 op., 7 more t., ch. 4, 2 t. over open mesh, ch. 4, skip 3 t., 5 t. over 5 t. and 3 t. in open mesh, ch. 4, 2 t. over closed block, ch. 4, 3 t. in open block and 5 t. over 5 t., skip 2 t., t. in last t., ch. 5, turn.

7th row: Skip 3 t., 5 t. over 5 t. and 3 t. in open mesh, ch. 4, 3 t. in next open mesh and 5 t. over 5 t., ch. 4, skip 6 sts., 4 d.c., ch. 4, skip 6 sts., 8 t., 2 op., 2 t., ch. 4, turn. *8th row:* 2 t., 3 op., 7 more t., ch. 4, 2 t. over closed block, ch. 4, 2 t. in open mesh, ch. 4, skip 3 t., 5 t. over 5 t., 3 t. in open mesh, 5 t. over first 5 t., t. in last t., ch. 5, turn. *9th row:* Skip 2 t., 8 t. over next 8 t., ch. 4, 4 d.c. over the 2 t., ch. 4, 3 t. in open mesh and 5 t. over first 5 t., 4 op., 2 t. Repeat from 2d row.

EDGE: 3 d.c., p., 3 d.c., in each loop.



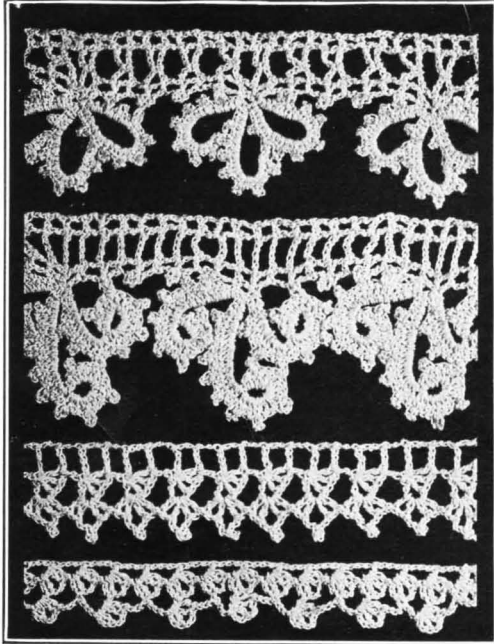
CORTICELLI MERCERIZED COTTONS



Wide and Narrow Edgings No. 696

These edgings are effective worked in rather coarse cotton and are suitable to use on scarfs for the library table, dresser or buffet, or on centerpieces, curtains, etc. The two narrow edgings will also work up effectively in fine thread and make very suitable trimming for underwear, children's dresses, etc. If a very narrow edge is desired the last row on either of these two patterns may be omitted and a very dainty little edge will be the result.

Materials: Corticelli Mercerized Cordonnet, Art. 66, Size 10. One No. 10 steel Crochet Hook.



- No. 696a** **Leaf Edge No. 696a.** In size 10 cotton this pattern measures about 2 inches deep. Ch. 13. *1st row:* D.c. in 5th st. from needle, ch. 3, skip 2 ch., s.c. on 3d, ch. 3, skip 2 ch., d.c. in next, ch. 1, skip 1st st., d.c. in next, p. of 4 sts. in top of d.c., ch. 4, turn. *2d row:* D.c. on d.c., ch. 5, d.c. on d.c., ch. 1, skip 1st st. of 4 ch., d.c. in next, ch. 4, turn. *3d row:* D.c. on d.c., ch. 3, s.c. on 5 ch., ch. 3, d.c. on d.c., ch. 1, skip 1st st. of 4 ch., d.c. in next, ch. 18, sl.st. in top of last d.c., 3 s.c., on this loop sl.st. in picot, (3 s.c., p.) 8 times on loop, 3 s.c., s.c. in sl.st., * ch. 13, drop st. and pick it up in 2d p. of preceding ring, (3 s.c., p.) 7 times, 3 s.c., s.c. in last s.c. of preceding row; repeat from * for next ring. *4th row:* D.c. on d.c., ch. 5, d.c. on d.c., ch. 1, skip 1st st. of 4 ch., d.c. in next, ch. 4, turn. *5th row:* D.c. on d.c., ch. 3, s.c. on 5 ch., ch. 3, d.c. on d.c., ch. 1, skip 1st st. of 4 ch., d.c. in next, sl.st. in 1st p. of last ring, sl.st. in d.c. just made, ch. 4, turn. **No. 696c** *6th row:* D.c. on d.c., ch. 5, d.c. on d.c., ch. 1, d.c. in 2d st. of 4 ch., ch. 4, turn. *7th row:* D.c. on d.c., ch. 3, s.c. on 5 ch., ch. 3, d.c. on d.c., ch. 1, d.c. on 2d st. of 4 ch., p. of 4 sts. in top of last d.c., ch. 4, turn; repeat 6th and 7th rows 3 times, then begin with 2d row and repeat. **No. 696d** **Scroll Edge No. 696b.** In size 10 cotton this pattern will measure about 2 1/2 inches deep. Ch. 4, skip 4 sts., d.c. in 5th st., ch. 1, skip 1 st., d.c. in last, ch. 4, turn. *2d row:* D.c. in 2d d.c., ch. 4, d.c. in d.c., ch. 1, d.c. in 2d st. of ch., ch. 4, turn, sl.st. in last d.c. for picot. *3d row:* Ch. 4, d.c. in 2d d.c., ch. 4, d.c. in d.c., ch. 1, d.c. in 2d st. of ch., ch. 4, turn. *4th row:* D.c. in 2d d.c., ch. 4, d.c. in d.c., ch. 1, d.c. in 2d st. of ch., ch. 18, sl.st. in 10th st. from needle; make in ring—1 s.c., 1 h.d., 1 d.c., p. of 3 sts., 3 d.c., sl.st. in p. on upper edge, (3 d.c., p. of 3 sts.) 3 times, 1 d.c.; make on ch.—2 d.c., (p. 3 d.c.) twice, p., 1 d.c., 2 h.d., 2 s.c., s.c. in d.c. on upper edge, ch. 21, sl.st. in 10th st. from needle, make sts. in ring like preceding but after 3 d.c., sl.st. in 3d p. on preceding ch.; make on ch.—2 d.c., p., (3 d.c., p.) 4 times, 2 h.d., 2 s.c.,—s.c. on s.c. of preceding ch. Make 3d scroll like 1st but after the 3 d.c. in ring sl.st. in 2d p. of preceding scroll. *5th row:* D.c. on d.c., ch. 1, d.c. on d.c., ch. 4, d.c. on d.c., ch. 1, d.c. in 2d st. of ch., ch. 4, turn. *6th row:* D.c. in 2d d.c., ch. 4, d.c. on d.c., ch. 1, d.c. on 2d st. of ch., sl.st. in 1st p. of scallop, sl.st. in top of d.c. just made, ch. 4, turn. *7th row:* D.c. in 2d d.c., ch. 4, d.c. on d.c., ch. 1, d.c. in 2d st. of ch., ch. 4, turn. *8th row:* D.c. on 2d d.c., ch. 4, d.c. on d.c., ch. 1, d.c. in 2d st. of ch., p. of 4 sts. in top of last d.c., ch. 4, turn. Repeat 6th and 7th rows 3 times, then begin with 2d row and repeat.

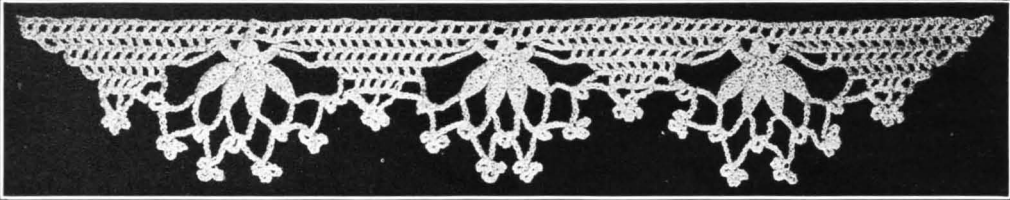
Narrow Edge with Picot Point No. 696c. In size 10 cotton this pattern measures 1 1/8 inches deep. Ch. 10. *1st row:* D.c. in 6th st. from needle, ch. 3, skip 3 sts. of ch., d.c. in next, ch. 7, turn. *2d row:* * D.c. in 1st d.c., ch. 5, turn. *3d row:* 3 d.c. with 1 ch. between in d.c. just made, ch. 3, skip 3 sts., d.c. in 4th, ch. 7, turn; repeat from *.

LOWER EDGE: Make on each 5 ch.; (2 d.c. with 1 ch. between, ch. 2, p. of 3 sts., ch. 2, 2 d.c. with 1 ch. between).

Narrow Shell Edge No. 696d. In size 10 cotton this pattern measures 3/4 of an inch deep. Make foundation chain of length required. *1st row:* D.c. in 9th st., * ch. 2, make on d.c. (1 d.c., ch. 2, 2 d.c.), skip 3 sts., d.c. in 4th; repeat from * for entire length, break thread and commence on opposite end for 2d row. *2d row:* S.c. in 2d st. of first 2 ch., * ch. 3, d.c. in 2d st. of first 2 ch. in next shell, ch. 2, make on d.c. (d.c., ch. 2, 2 d.c.), ch. 3, s.c. in 2d st. of first 2 ch. in next shell; repeat from *.



CORTICELLI MERCERIZED COTTONS



Fuchsia Edge in Cluny Crochet No. 697

Suitable to use on runner for buffet or dresser, or for towel edging, etc. For dresser scarf use the edge at the ends and across the front, making the scarf just long enough to cover the top of dresser, and embroider an initial in the center about an inch and a half in from front edge. A pincushion to match may be made, using one fuchsia scallop at each end of the cushion cover and finishing the sides with a row of open filet mesh and picots, with initial in center of cover. The edge measures about 1 3/4 inches deep.

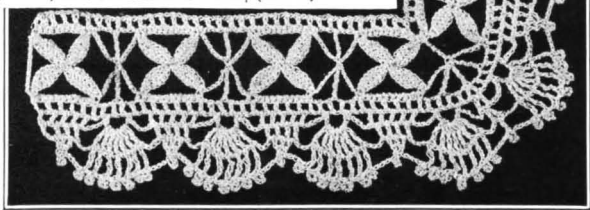
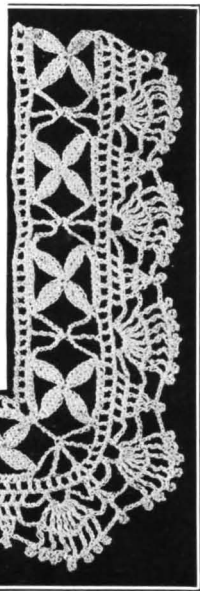
Materials: Corticelli Mercerized Cordonnet, Art. 66, Size 30, or Princess Pearl Crochet Cotton, Size 8. No. 10 steel Crochet Hook.

Instructions: Make chain of required length. *1st row:* D.c. in 8th st. from needle, * ch. 1, skip 1, d.c. in next st.; repeat from * to end of row. *2d row:* Sl.st. to center of second 1 ch. of preceding row, ch. 5, d.c. on third 1 ch., ** ch. 1, d.c. on next 1 ch., repeat from ** 11 times (which will make 13 meshes); ch. 4, s.c. on second 1 ch., ch. 3, 4 d.c. on second d.c., ch. 3, s.c. on second 1 ch., ch. 4, d.c. on second 1 ch., ch. 1, d.c. on next 1 ch.; repeat from **. End each row on next to the last 1 ch. st. of previous row. *3d row:* Sl.st. to first 1 ch., ch. 5, d.c. on second 1 ch., ** ch. 1, d.c. on next 1 ch., repeat from ** 8 times, ch. 8, s.c. on s.c., 3 s.c. on 3 ch., s.c. on each d.c., 3 s.c. on 3 ch., s.c. on s.c., ch. 8, d.c. on second 1 ch., ch. 1, d.c. on next 1 ch.; repeat from **. *4th row:* Sl.st. to first 1 ch., ch. 5, ** d.c. on second 1 ch., * ch. 1, d.c. on next 1 ch., repeat from * 5 times, * ch. 20, drop st. and pick it up on s.c. over first d.c. of group, s.c. in 3d st. of ch. just made, h.d. in next st., d.c. in each of next 3 sts., h.d. in next 3 sts., s.c. in next, sl.st. on next, repeat from * 3 times, each time dropping the last st. of ch. 20 and catching it in the following s.c. of group, ch. 11; repeat from **. *5th row:* Sl.st. to first 1 ch., ch. 5, ** d.c. on next 1 ch., * ch. 1, d.c. on next, repeat from * 2 times, ch. 5, turn, t. on third d.c., retain last st. on needle, t. on 5th d.c., retain last st. on needle, thread over, take off the 3 sts. at once, turn, 3 picots (4 sts.) in last st., sl.st. down 5 ch. to the d.c., ch. 5, s.c. on center of 11 ch., * ch. 4, s.c. on same ch., ch. 6, 3 picots (4 sts.) in last st. of this 6 ch., ch. 5, s.c. on next 11 ch., repeat from * 3 times, ch. 4, s.c. in same ch., ch. 5, d.c. on second 1 ch., ch. 1; repeat from **.

Edge in Cluny Crochet No. 698

Materials: Corticelli Mercerized Cordonnet, Art. 66, Size 30 or 40. No. 12 steel Crochet Hook.

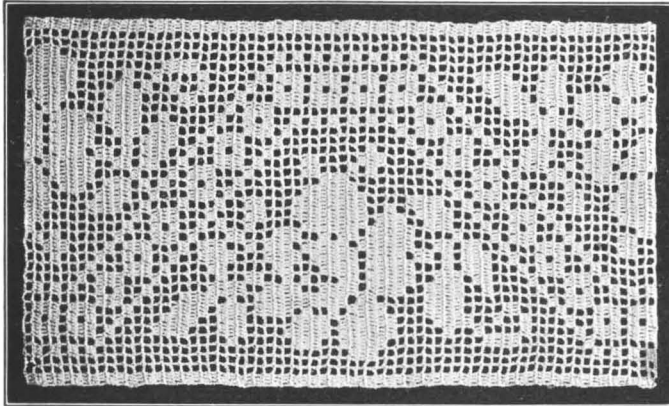
Instructions: This pattern measures about 2 inches deep. Make chain of the required length. *1st row:* D.c., * ch. 1, skip 1 st., d.c. in next; repeat from *. For corner: Ch. 5, d.c. in same st. *2d row:* ** Ch. 9, s.c. in 3d st. of this ch., h.d. in next st., d.c. in each of next 3 sts., h.d. in next, s.c. in next, sl.st. in next, (2 s.c. on 1 ch. of first row) 5 times, ch. 9, drop st. and pick it up in point of next petal, s.c. in 3d st. of ch. just made, 1 h.d., 3 d.c., 1 h.d., 1 s.c., 1 sl.st., 1 s.c. on next 1 ch., ch. 7, d.t. on second 1 ch., ch. 7, s.c. on second 1 ch.; repeat from **. Corner: (omit the two 7 chs. and d.t.), s.c. on 5 ch. *3d row:* ** Ch. 16, * drop st. and pick it up in st. between petals, s.c. on 3d st. of ch., 1 h.d., 3 d.c., 1 s.c., 1 sl.st., * ch. 19, repeat from * to * once, ch. 7, s.c. on d.t.; repeat from **. Corner: Ch. 7, d.t. in s.c. on point, ch. 16, drop st. and pick it up in center of petals, make petal. *4th row:* * 9 s.c. on 10 ch., 1 s.c. in point of petal, ch. 4, d.t. on d.t., ch. 4, 1 s.c. in point of petal; repeat from *. Corner: (Ch. 4, d.t. on d.t.) 3 times. *5th row:* Ch. 4, * d.c. in first s.c., (ch. 1, skip 1 s.c., d.c. in next) 4 times, ch. 1, d.c. in 2d st. of 4 ch., (ch. 1, skip 1 st., d.c. in next) 3 times, ch. 1; repeat from *. Corner: 2 d.c. on d.t. with ch. 1 between. *6th row:* Ch. 4, d.c. on first 1 ch., (ch. 1, d.c. on next 1 ch.) 3 times, * ch. 5, s.c. on second 1 ch., ch. 6, s.c. on second 1 ch., ch. 5, d.c. on second 1 ch., (ch. 1, d.c. on next 1 ch.) 4 times; repeat from *. Corner: 2 d.c. with 1 ch. between. *7th row:* Ch. 4, d.c. on first 1 ch., * ch. 1, d.c. on next 1 ch., ch. 4, 7 t. with 1 ch. between on 6 ch., ch. 4, d.c. on first 1 ch., ch. 1, d.c. on next 1 ch.; repeat from *. Corner: 2 d.c., 1 ch. between. *8th row:* Ch. 4, d.c. on second and third 1 ch., * retaining last st. of each on needle, thread over and take off all at once, picot (4 sts.), ch. 4, (t. on t., p. of 4 sts., ch. 1) 7 times, ch. 4, d.c. on each of the three 1 chs.; repeat from *. Corner: D.c., p.



Corner Section of Edge No. 698



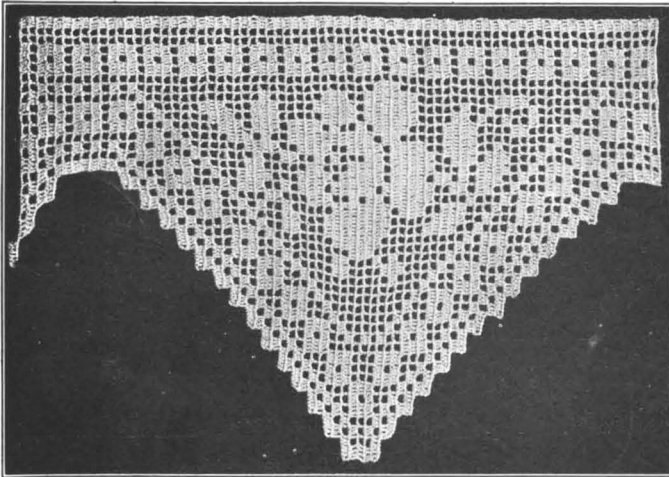
CORTICELLI MERCERIZED COTTONS



Rose Insertion and Edge for Bedspread No. 699

The rose insertion measures $6\frac{1}{2}$ inches wide and the edge $7\frac{1}{2}$ inches at point. They may be combined with linen or other suitable material for a bedspread; or for a spread entirely of crochet, work the required number of strips of insertion, substituting open mesh for the row of closed mesh at top and bottom. Sew together, matching the design to form diamond squares, and finish with the crocheted edge.

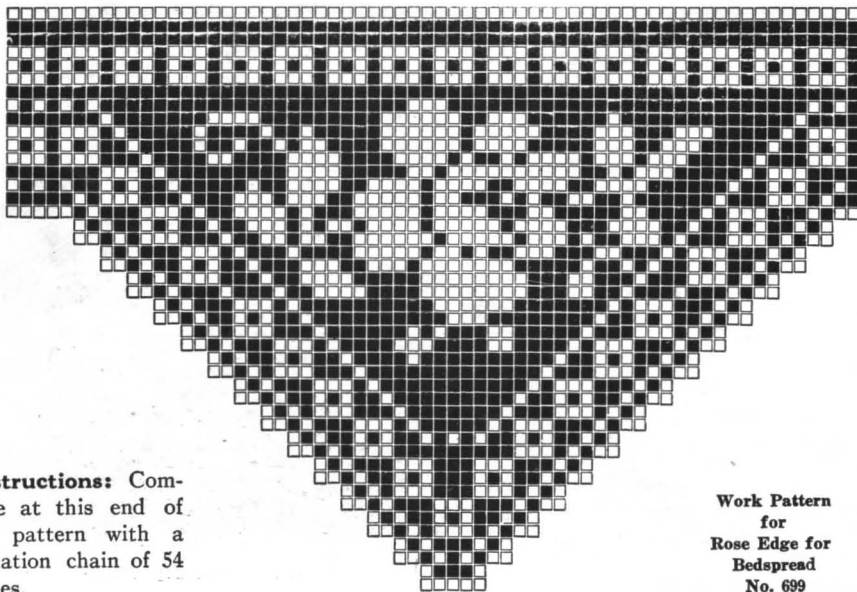
Materials: Corticelli Mercerized Cordonnet, Art. 66, Size 40. No. 12 steel Crochet Hook.



Leaf Pattern for Bedspread No. 700

The leaf design shown in the work pattern at the bottom of page 39 is another attractive suggestion for a bedspread. If worked in size 40 cotton each strip will measure about 10 inches wide. Commence with a foundation chain of 201 stitches. The first row contains 65 open meshes.

Materials: Corticelli Mercerized Cordonnet, Art. 66, Size 40. No. 12 steel Crochet Hook.

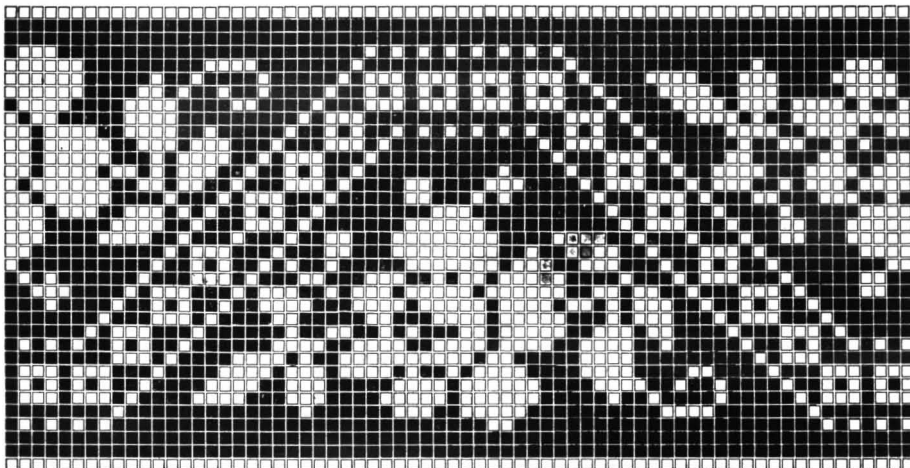


Instructions: Commence at this end of work pattern with a foundation chain of 54 stitches.

Work Pattern for Rose Edge for Bedspread No. 699



CORTICELLI MERCERIZED COTTONS



35 Meshes

Work Pattern for Rose Insertion No. 699

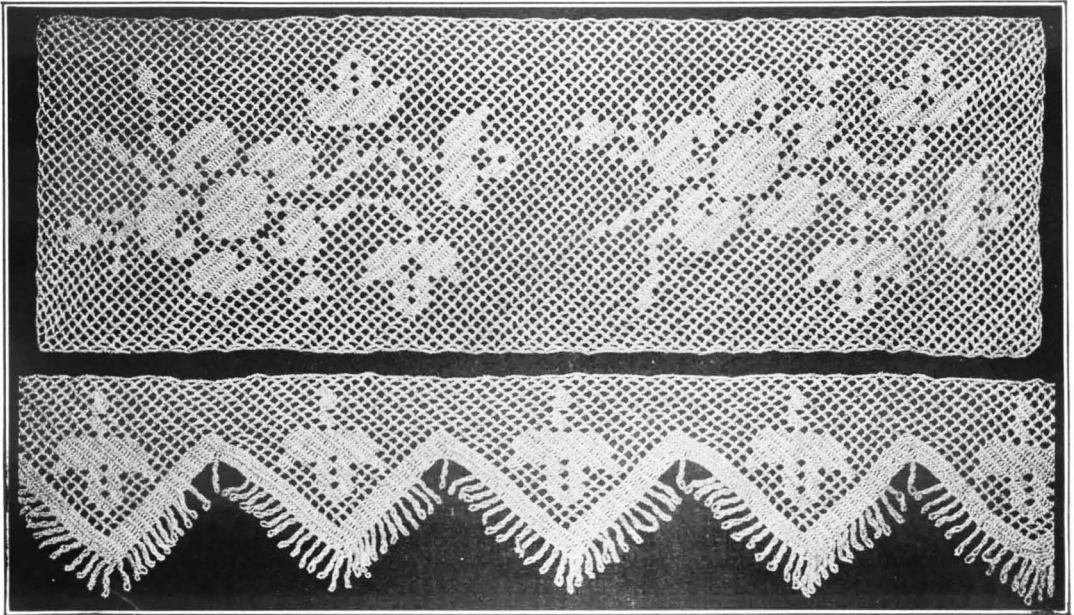


65 Meshes

Leaf Pattern for Bedspread No. 700



CORTICELLI MERCERIZED COTTONS



Briar Rose Edge and Insertion for Bedspread No. 701

The handsome Briar Rose pattern for an insertion and edge may be used on linen or other suitable material for a bedspread, or if a spread entirely of crochet is desired strips of the insertion may be sewed together and finished with the edge. The meshes are worked in diagonal rows instead of straight up and down. The insertion measures about 7 inches and the edge 4½ inches deep.

Materials: Corticelli Mercerized Cordonnet, Art. 66, Size 30. One No. 9 steel Crochet Hook.

Instructions for Edge: Foundation Chain: Ch. 22, sl.st. in 8th st. from hook, ch. 3, sl.st. on 4th st., ch. 3, sl.st. in next 4th st., *ch. 27, sl.st. in 8th st. from hook, ch. 3, sl.st. in 4th st., ch. 3, sl.st. in next 4th st., ** ch. 18, sl.st. in 8th st. from hook, ch. 3, sl.st. in 4th st., ch. 3, sl.st. in next 4th st.; repeat from ** 12 more times.*

1st row: The 2 sts. between the last 2 picots made will form the first d.c. for this row. Make 54 more d.c., ch. 2, t. in same st. with last d.c., ch. 6, turn.

2d row: D.c. in top of t., 1 op., 18 cl., make picot for fringe by chaining 16, * sl.st. in 8th st. from hook, ch. 3, sl.st. in next 4th st., ch. 3, sl.st. in next 4th st.*, make another picot by chaining 18 and repeating from * to *, and the 2 sts. between the picots will form the first d.c. for next row.

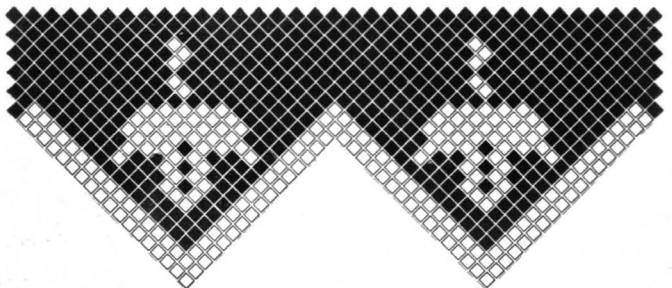
3d row: 2 cl., 18 op., ch. 2, t. in same st. with last d.c., ch. 6, turn.

4th row: D.c. in top of t., 10 op., 1 cl., 8 op., 2 cl., 2 picots as before.

5th row: 2 cl., 2 op., 3 cl., 3 op., 1 cl., 11 op., ch. 2, t. in same st. with last d.c., ch. 6, turn.

6th row: D.c. in 1st d.c. of preceding row, 10 more op., 3 cl., 1 op., 2 cl., 1 op., 1 cl., 2 op., 2 cl., 2 picots.

7th row: 2 cl., 2 op., 2 cl., 1 op., 5 cl., 10 op., t. in 3d st. of 6 ch., ch. 6, turn.



Work Pattern No. 701a for Briar Rose Edge



CORTICELLI MERCERIZED COTTONS



8th row: D.c. in the 2d d.c. of previous row, 9 more op., 4 cl., 1 op., 2 cl., 3 op., 2 cl., 2 picots.

9th row: 2 cl., 4 op., 5 cl., 9 op., t. in 3d st. of 6 ch., ch. 6, turn.

10th row: D.c. in 2d d.c. of previous row, 9 more op., 5 cl., 3 op., 2 cl., 2 picots.

11th row: 2 cl., 1 op., 6 cl., 1 op., 2 cl., 6 op., t. in 3d st. of 6 ch., ch. 6, turn.

12th row: D.c. in 2d d.c. of row below, 4 op., 1 cl., 4 op., 3 cl., 3 op., 2 cl., 1 picot (made with ch. of 16 sts.), ch. 3.

13th row: 2 cl., 10 op., 2 cl., 2 op., t. in 3d st. of 6 ch., ch. 6, turn.

14th row: D.c. in 2d d.c. of previous row, 13 op., 2 cl., ch. 3, turn.

15th row: 2 cl., 12 op., t. in 3d st. of 6 ch., ch. 6, turn.

16th row: D.c. in 2d d.c., 11 op., 2 cl., picot (of 16 sts.).

Now commence the next point, repeating the instructions for Foundation Chain from * to * and following Work Pattern No. 701a.

When the strip of edging is of the length desired, finish the last end to correspond with the first, as follows: *17th row of last point:* Ch. 3, skip 2 d.c., d.c. in next, 11 op., t. in 3d st. of 6 ch., ch. 6, turn.

18th row: D.c. in 2d d.c. of preceding row, 9 op., t. in last d.c., ch. 3, turn.

19th row: D.c. in 2d d.c. of preceding row, 7 op., t. in 3d st. of 6 ch., ch. 6, turn.

20th row: D.c. in 2d d.c., 5 op., t. in last d.c., ch. 3, turn.

21st row: D.c. in 2d d.c., 3 op., t. in 3d st. of 6 ch., ch. 6, turn.

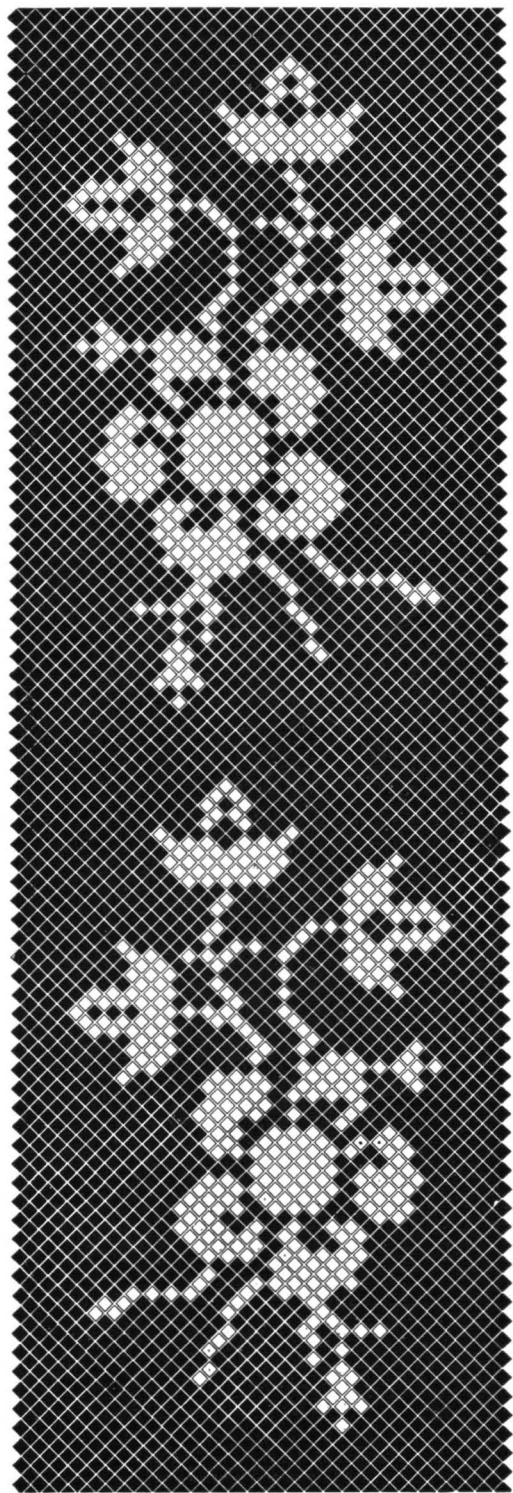
22d row: D.c. in 2d d.c., 2 op., t. in last d.c.

Briar Rose Insertion No. 701. Ch. 7, d.c. in 1st st. made, ch. 6, turn.

2d row: D.c. in top of d.c. just made, 2 op., ch. 2, t. in same st. with last d.c., ch. 6, turn.

3d row: D.c. in top of t., 4 op., ch. 2, t. in same st. with last d.c., ch. 6, turn.

4th row: T. in top of t., 6 op., ch. 2, t. in same st. with last d.c., ch. 6, turn. Continue, following Work Pattern No. 701b, squaring up the edges the same as for the Briar Rose Edge.



Work Pattern No. 701b for Briar Rose Insertion



CORTICELLI MERCERIZED COTTONS



Three Attractive Patterns in Edgings and Insertions No. 702

Any one of these three patterns would make an effective trimming for a buffet runner or square tea cloth. Pattern No. 702a is also suitable for a dresser scarf, and for a towel insertion this pattern can be made just half its width and finished with a row of filet crochet.

Insertion and Edge No. 702a

Materials: Corticelli Mercerized Cordonnet, Art. 66, Size 30 or 40. Steel Crochet Hook No. 10.

Instructions: EDGE: The edge measures 2¾ inches wide. Make chain of the required length.

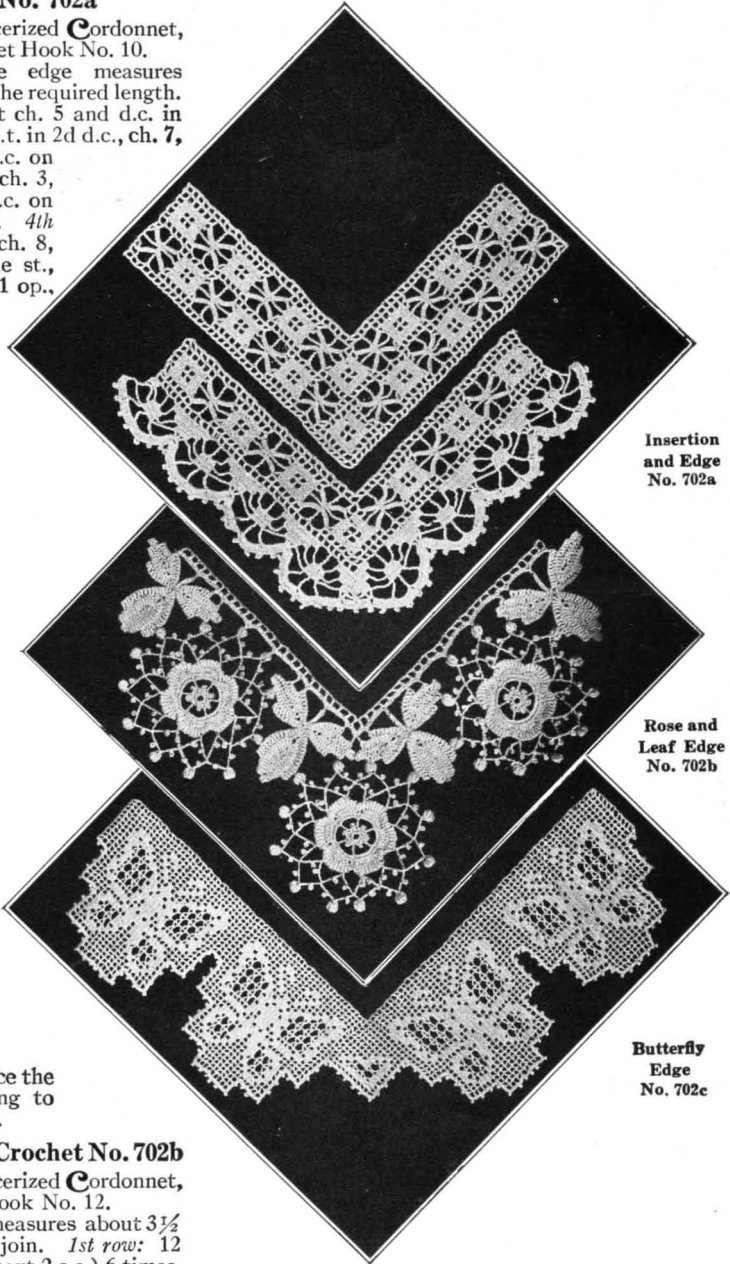
1st row: All open mesh, on point ch. 5 and d.c. in same st. *2d row:* * 6 op., ch. 7, d.t. in 2d d.c., ch. 7, repeat from *; on point ch. 5, d.c. on same st. *3d row:* 1 op., * 4 cl., ch. 3, 7 s.c. on 7 ch., sl.st. on d.t., 7 s.c. on next 7 ch., ch. 3; repeat from *. *4th row:* 1 op., * 1 cl., 2 op., 1 cl., ch. 8, sl.st. on d.t., ch. 3, sl.st. in same st., ch. 8; repeat from *. *5th row:* 1 op., * 1 cl., 2 op., 1 cl., ch. 11, sl. st. on 3 ch., ch. 11; repeat from *. *6th row:* 1 op., * 4 cl., ch. 2, d.c. in 4th st. of 11 ch., 6 d.c. on same ch., sl.st. on 3 ch., 7 s.c. on next 11 ch., ch. 2; repeat from *. *7th row:* * 6 op., ch. 5, d.t. on 3 ch., ch. 5; repeat from *. *8th row:* Op. on op., 2 op. on each 5 ch. *9th row:* 1 cl., * ch. 8, d.t. in 2d d.c., ch. 8, skip 2 op., 6 cl.; repeat from *; on point 5 cl. *10th row:* * Ch. 12, 2 cl., ch. 8, 4 cl., ch. 8; repeat from *; on point 5 cl. *11th row:* * Ch. 14, 2 cl., ch. 10, 2 cl., ch. 10; repeat from *; on point 1 cl., ch. 3, s.c. on point, ch. 3, 1 cl. *12th row:* * Ch. 12, d.t. in 1st d.c., ch. 8, d.t. in 4th d.c., ch. 8, d.t. in 7th d.c., ch. 8, d.c. in 1st, 4th, and 7th d.c.; repeat from *. On point d.c. in 1st and 4th d.c., ch. 4, s.c. on point, ch. 4, d.c. in 1st and 4th d.c. *13th row:* 10 d.c. on each 8 ch., picot (4 sts.) every 5th d.c., 4 d.c. and p. on each 4 ch. at point. Omit picot between scallops.

INSERTION: The insertion measures 2½ inches wide and can be made from the first part of these instructions, making a foundation chain of twice the length specified, and by referring to illustration for position of blocks.

Rose and Leaf Edge in Irish Crochet No. 702b

Materials: Corticelli Mercerized Cordonnet, Art. 66, Size 50. Steel Crochet Hook No. 12.

Instructions: This edge measures about 3½ inches in width. **Rose:** Ch. 8, join. *1st row:* 12 s.c. in ring. *2d row:* (P., s.c. on next 2 s.c.) 6 times. *3d row:* Ch. 10, (d.c. on s.c. between picots, ch. 7) 6 times, sl.st. in 3d st. in 10 ch. *4th row:* 11 s.c. on each 7 ch. *5th row:* (1 s.c., 9 d.c., 1 s.c.) on each group of 11 s.c. *6th row:* * Ch. 3, Roll st. (6 overs), Roll st. (8 overs) 6 Roll sts. (10 overs), Roll st. (8 overs), Roll st. (6 overs), ch. 3, sl.st. in next s.c.; repeat from * 5 times.



Insertion and Edge No. 702a

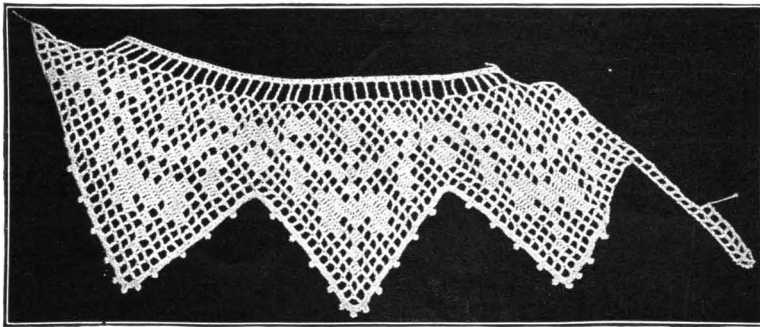
Rose and Leaf Edge No. 702b

Butterfly Edge No. 702c

Continued on bottom of page 43



CORTICELLI MERCERIZED COTTONS

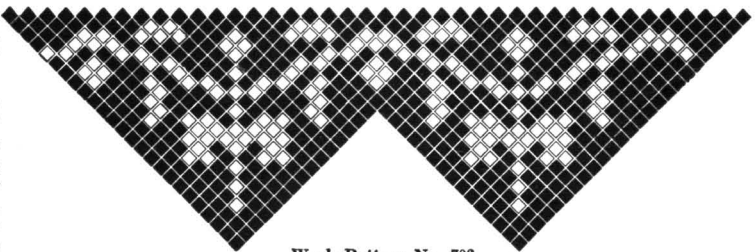


Filet Point Lace No. 703

The filet point lace with picot edge could be used effectively to edge a centerpiece or round tablecloth. It will measure about $3\frac{1}{4}$ inches deep if worked with size 70 cotton.

Materials: Corticelli Mercerized Cordonnet, Art. 66, Size 70. Steel Crochet Hook No. 12.

Instructions: Commence with a chain of 81 sts. *1st row:* 24 op., skip 2 sts., t. in next st., thus making the last mesh a triangle, ch. 3, turn. *2d row:* D.c. in next d.c., which will make this first mesh also a triangle, 3 more op., 1 cl., 19 op., ch. 5, turn. Continue, following Work Pattern No. 703, always ending and commencing the row at the top edge with a triangular mesh. Finish all around lower edge of lace with s.c., with picot over every 4th d.c. Work across upper edge with ch. 2 between 2 t.c.; then 3 s.c. in each mesh.



Work Pattern No. 703

Rose and Leaf Edge No. 702b, continued from page 42

CHAINS: Ch. 6, drop stitch and pick it up between 2d and 3d Roll st. *1st row:* * Ch. 8, sl.st. in 6th st. for picot, ch. 12, sl.st. in 6th st. for picot, ch. 3, s.c. between 8th and 9th Roll sts. in same petal; repeat from * around rose. *2d row:* * Ch. 8, sl.st. in 6th st. for picot, ch. 9, 4 Roll sts. (10 overs) in 6th st., drop stitch from needle, insert needle in stitch before 1st Roll st., pick up stitch and draw through, ch. 5, sl.st. in 6th st., ch. 8, sl.st. in 6th st. for picot, ch. 3, s.c. on next ch.; repeat from * around rose.

LARGE LEAF: Ch. 15 loosely. *1st row:* S.c. in 3d st. from needle, 11 s.c. in next 11 sts., 2 s.c. in last st., ch. 3, 2 s.c. in same st., 12 s.c. in other half of ch., turn. *2d row:* 4 sl.st. on 4 s.c., ch. 3, Roll st. (10 overs, all Roll sts. in this leaf are 10 overs) in same st. as last s.c., 10 Roll sts. in next 10 s.c., 3 Roll sts. on 3 ch., ch. 2, 3 Roll sts. on same ch., 11 Roll sts. on other side. *3d row:* Sl.st. between first 5 Roll sts., s.c. between each Roll st., 2 s.c. on 2 ch., ch. 3, 2 s.c. on same ch., s.c. between each Roll st. on next side to 4th Roll st. from top of leaf, ch. 3, turn. *4th row:* Roll st. in each s.c., 3 Roll sts. on 3 ch., ch. 2, 3 Roll sts. on same ch. Work next side same as this.

SMALL LEAF: Ch. 12 loosely. *1st row:* S.c. in 3d st., 8 s.c. in next 8 ch. sts., 2 s.c. in last st., ch. 3, 2 s.c. in same st., 9 s.c. on other side of ch., turn. *2d row:* 4 sl.st. on 4 s.c., ch. 2, Roll st. (4 overs, all Roll stitches in this leaf are 4 overs) in same st. as last s.c., 7 Roll sts. in next 7 s.c., 3 Roll sts. on 3 ch., ch. 3, 3 Roll sts. on same ch., 8 Roll sts. on next side. *3d row:* Sl.st. between first 5 Roll sts., s.c. between each Roll st., 2 s.c. on 2 ch., 2 s.c. on same ch., s.c. between each Roll st. on next side to 4th Roll st., ch. 3, turn. *4th row:* Roll st. in each s.c., 3 Roll sts. on 3 ch., ch. 2, 3 Roll sts. on same ch.; next side same as this. **STEM:** Join thread to leaves, ch. 10., s.c. in 3d ch. st., 8 s.c. on chain. Tack leaves to medallion.

EDGE AT TOP: *1st row:* * Ch. 9, s.c. on stem, ch. 9, s.c. on next leaf, ch. 4, d.c. on same leaf, ch. 12, s.c. on medallion, ch. 14, s.c. on same medallion, ch. 12, d.c. on leaf, ch. 4, s.c. in leaf; repeat from *. *2d row:* 9 s.c. on 9 chs., 4 s.c. on 4 chs., 12 s.c. on 12 chs., 14 s.c. on 14 chs. *3d row:* D.c. in s.c., * ch. 2, skip 2 s.c., d.c. in next; repeat from *.

Butterfly Edge No. 702c

Materials: Corticelli Mercerized Cordonnet, Art. 66, Size 50. Steel Crochet Hook No. 12.

Instructions: This edge measures 4 inches in width. Ch. 38. *1st row:* 11 op. *2d row:* 11 op. *3d row:* 11 op., ch. 26. *4th row:* D.c. in 9th st. from needle, (ch. 2, skip 2 sts., d.c. in next) 5 times, *Continued on page 45*



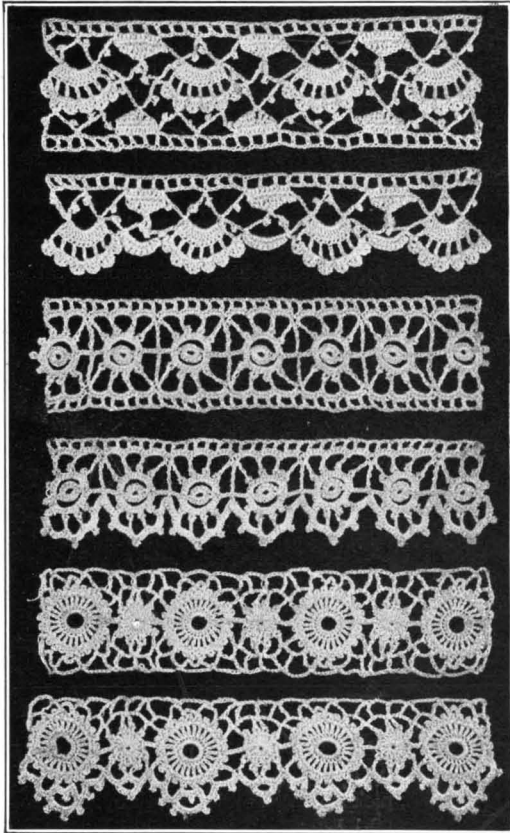
CORTICELLI MERCERIZED COTTONS



Insertions and Edgings in Irish Crochet

These new patterns for insertions and edgings in Irish Crochet are not difficult to execute and make very pretty trimming for children's dresses or for waists. To secure the best results they should be worked in rather fine thread.

Materials: Corticelli Mercerized Cordonnet, Art.66, Size 80 or 100. One No.14 steel Crochet Hook.



- Insertion in Fan and Pyramid Pattern No. 704.** This insertion in size 80 cotton measures about 1 1/4 inches deep. Make chain of length desired.
1st row: D.c. in 7th st. from needle, * ch. 2, skip 2 sts., d.c. in next; repeat from *.
2d row: * Ch. 3, p. of 3 sts. in last st. of ch. (all picots are of 3 sts. and are not included in number of stitches of chain), ch. 7, p., ch. 2, skip 2 d.c., s.c. in next, (ch. 3, p., ch. 7, p., ch. 2; this forms a picot-loop and hereafter will be abbreviated as p.-l.). Skip three 2 chs., and commence *pyramid*; make 3 s.c. on each of next three 2 chs., ch. 1, turn. Skip 1st s.c., 8 s.c. on 8 s.c., ch. 1, turn, skip 1st s.c., s.c. in next, h.d. in next, 3 d.c. in next 3 s.c., 1 h.d. in next, s.c. in next, ch. 1, sl.st. down side to ch.; repeat from *.
3d row: Sl.st. to center of 7 ch. *Fan:* * Ch. 7, s.c. on center of next loop, ch. 3, turn, 12 d.c. on 7 ch., ch. 5, turn, skip 2 d.c., d.c. in next, (ch. 2, skip 1 d.c., d.c. in next) 4 times. Ch. 5, sl.st. in last d.c., sl.st. at side to 7 ch., 1 p.-l., s.c. in top of pyramid, 1 p.-l., s.c. on next loop; repeat from *. *4th row:* * On each 2 ch. of fan make 1 s.c., ch. 1, 1 d.c., ch. 1, 1 d.c., ch. 1, 1 s.c., ch. 2, s.c. on next p.-l., 1 p.-l., s.c. on next p.-l., ch. 2; repeat from *, break thread. Make chain and a row of meshes as in the 1st and 2d rows. *2d row:* * Make one half p.-l., s.c. in 2d scallop of fan, one half p.-l., skip 2 d.c., s.c. in next d.c., one half p.-l., s.c. in 5th scallop of fan, one half p.-l., skip three 2 chs., 3 s.c. on each of next three 2 chs., and make pyramid as before, but after 2d d.c. make s.c. in p.-l. between the two fans, and finish pyramid. Repeat from *.
- Edge No. 704a.** The edge in size 80 cotton measures one inch deep. Make
- No. 704**
- No. 704a**
- No. 705**
- No. 705a**
- No. 706**
- No. 706a**

the 1st, 2d and 3d rows like insertion. *4th row:* Like insertion, but omit p.-l. between fans, and after last scallop of fan ch. 2, s.c. on p.-l., ch. 7, s.c. on next p.-l., ch. 1, turn, 9 s.c. on 7 ch., ch. 1, turn, skip 1st s.c., 8 s.c. on 8 s.c., ch. 2, sl.st. on 7 ch., ch. 2, make last row of scallop on next fan.

Insertion in Double Ring Pattern No. 705. If worked in size 100 cotton this pattern will measure about one inch deep. Ch. 10, * sl.st. in 7th st. for center ring, then, holding stitch over chain and thread under, work 6 s.c., ch. 3, 6 s.c. in ring, sl.st. in ch., sl.st. in next st. of ch., hold st. over ch. and thread under, ch. 9, sl.st. in 3 ch. of center ring, ch. 9, sl.st. in 1st st., stitch over chain and thread under, (3 s.c., p. of 4 sts.) 4 times, 3 s.c., ch. 16; repeat from *. In ring at end, make (3 s.c., p.) 9 times, 2 s.c., * sl.st. in ch. to next ring, (3 s.c., p.) 4 times, 2 s.c., sl.st. in ch.; repeat from *.

UPPER AND LOWER EDGE. *1st row:* D.c. in 3d p., * ch. 5, d.c. in next, ch. 5, t. in next, d.t. in center of ch. between rings, t. in 1st p. in next ring, ch. 5, d.c. in next; repeat from *. *2d row:* 6 s.c. on each 5 ch. *3d row:* D.c. in s.c., * ch. 2, skip 2 s.c., d.c. in next; repeat from *. Finish opposite side in the same way.

Edge No. 705a. Make medallions and the upper edge the same as for the insertion. **LOWER EDGE:** * S.c. in 2d p., * ch. 5, d.c. in next, ch. 5, d.c. in next, ch. 5, s.c. in next, ch. 5, s.c. in center of ch. between rings, ch. 5, s.c. in 1st p. of next ring; repeat from *. *2d row:* * (4 s.c., p. of 4 sts., 3 s.c.) on three 5 chs., 5 s.c. on last 5 ch. of first ring and on first 5 ch. of next ring; repeat from *.

Insertion of Large and Small Medallions No. 706. If worked in size 100 cotton this insertion will measure about one inch deep. *Begin with large medallion:* Ch. 16, sl.st. in 12th st. from needle, * sl.st. in next st. of ch., hold thread under ch. and st. over, 23 s.c. in ring, sl.st. in ch., sl.st. in next 3 sts. of ch., thread under chain and st. over, ch. 1, d.c. in each s.c. with 1 ch. between, ch. 1,



CORTICELLI MERCERIZED COTTONS



sl.st. in ch., making twenty-four 1 chains, thread under ch. and st. over, (1 s.c., ch. 3, 1 s.c.) on 12 of 1 ch., ch. 13, *which begins small medallion*, sl.st. in 7th st., sl.st. in next 3 sts. of ch., (2 d.c. in ring, p. of 4 sts. in top of last d.c.) 4 times, 2 d.c., ch. 19, *which begins next large medallion*, sl.st. in 12th st. from needle; repeat from *. At end make last row of large medallion entirely around, making 24 chs., * sl.st. on ch. to small medallion, (2 d.c., p.) 4 times, 1 d.c., sl.st. in ch., sl.st. on ch. to large medallion, (s.c., ch. 3, s.c. on each 1 ch.) making twelve 3 chs.; repeat from *. *1st row on edge of medallions:* Join thread in eleventh 3 ch., * ch. 5, skip one 3 ch., s.c. in next, ch. 7, skip one 3 ch., s.c. in next, ch. 4, s.c. in next, ch. 7, skip one 3 ch., s.c. in next, ch. 5, skip one 3 ch., d.c. in next, d.c. in 1st p. of small medallion, ch. 5, d.c. in next p., also in next, ch. 5, d.c. in next, d.c. in second 3 ch. of large medallion; repeat from *. *2d and last row:* Join thread in 5 ch. at end, * ch. 7, s.c. on 7 ch., ch. 7, s.c. on next 7 ch., ch. 7, t. on 5 ch., t. on next 5 ch., ch. 4, d.c. between 2 d.c., ch. 4, t. on 5 ch., t. on next 5 ch.; repeat from *.

Edge of Large and Small Medallions No. 706a. If made of size 100 cotton this edge will measure about 1 1/4 inches deep. Make upper edge and 1st row on lower edge the same as for the insertion. *Last row:* * Make (4 s.c., p. of 3 sts., 3 s.c.) on 5 ch., make (3 s.c., p., 5 s.c.) on 7 ch., make (3 s.c., p., 2 s.c.) on 4 ch., make 3 s.c. on next 7 ch., ch. 7, turn, drop st. and pick it up in 3d s.c. on first 7 ch., turn, (2 s.c., p., 4 s.c., p., 4 s.c., p., 2 s.c.) on 7 ch., make (2 s.c., p., 3 s.c.) on next 7 ch., make (4 s.c., p., 3 s.c.) on 5 ch., 7 s.c. on next 5 ch., 3 s.c. on next, ch. 5, drop st. and pick it up in 3d s.c. of last 5 ch., make (4 s.c., p., 3 s.c.) on 5 ch., 4 s.c. on next 5 ch.; repeat from *.

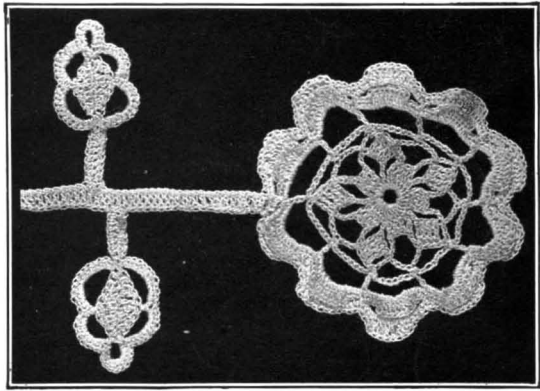
Rose and Leaf Medallion No. 707

Worked either in white or in colors this medallion would make a suitable decoration for a hat or an attractive appliqué ornament for a net breakfast cap. It may also be used as an insert on linen pieces.

Materials: Corticelli Mercerized Cottonnet, Art. 66, 1 ball Size 30. One No. 9 steel Crochet Hook. This quantity of material will make several medallions. The medallion would also work up nicely in Corticelli Crochet Silk.

Instructions: Ch. 8, join, ch. 3. *1st row:* 3 t. in ring, (ch. 7, 1 t., ch. 7, 4 t.), repeat 3 more times, ch. 7, t. in ring, ch. 7, sl.st. in top of 3 ch., turn. *2d row:* Sl.st. to 4th of 7 ch., (3 t. in next 3 sts. of next 7 ch., ch. 3, sl.st. in next st., ch. 7, sl.st. in center of next 7 ch.), repeat 4 times, sl.st. across top of ch. *3d row:* Ch. 8, sl.st. in 4th of 7 ch., ch. 8, sl.st. in corner of next ch.; repeat around. *4th row:* Ch. 12, (d.c. in sl.st., ch. 9), repeat around and join to 3d of 12 ch., ch. 2. *5th row:* Under 9 ch. make (4 s.c., 8 d.c., 4 s.c.), sl.st. in top of d.c.; repeat around. *6th row:* Ch. 10, let loop fall behind scallop of last row, sl.st. between scallops; repeat around. *7th row:* Under 9 ch. make (4 s.c., 8 d.c., 4 s.c.); repeat around. **STEM:** Ch. 43, turn, d.c. in 4th st., d.c. in every st. Break thread and fasten.

TO MAKE LEAF: Ch. 10, * 1 s.c. in 3d st. from hook, 2 d.c., 1 t., 2 d.c., 2 s.c., ch. 2, make same way on other side of ch., ch. 9, sl.st. in top of t., ch. 7, sl.st. in point, ch. 7, sl.st. in same place, ch. 7, sl.st. in t. on other side, ch. 9, sl.st. in next point, 12 s.c. under 9 ch., 10 s.c. under each 7 ch., 10 s.c. under 9 ch., sl.st. in point, ch. 7, sl.st. in 21st st. of stem attached to rose, 2 sl.st. on stem, turn. D.c. in each st. of ch., sl.st. in center of leaf. Make another leaf and fasten in 16th st. on other side of stem.



Butterfly Edge No. 702c, continued from page 43

ch. 2, d.c. in last d.c. (which makes 7 op. on ch.), 11 op. *5th row:* 5 op., 2 cl., 11 op. *6th row:* 4 op., 3 cl., 2 op., 5 cl., 4 op. *7th row:* 4 op., 1 cl., 1 op., 1 cl., 1 op., 3 cl., 1 op., 1 cl., 1 op., 1 cl., 3 op., ch. 26. *8th row:* 7 op. on 26 ch., 3 op., 1 cl., (ch. 3, s.c. in 3d st., ch. 3, d.c. in 3d st.) 3 times, ch. 3, s.c. in 3d st., ch. 3, 2 cl., 4 op. *9th row:* 5 op., 1 cl., (ch. 5, d.c. on d.c.) 4 times, 1 op., 1 cl., 2 op., 4 cl., 3 op. *10th row:* 2 op., 1 cl., 1 op., 1 cl., 1 op., 2 cl., 1 op., 1 cl., 1 op., (ch. 3, s.c. on 5 ch., ch. 3, d.c. on d.c.) 3 times, ch. 3, s.c. on 5 ch., ch. 3, 1 cl., 5 op. *11th row:* 6 op., 1 cl., 1 op., (ch. 5, d.c. on d.c.) 3 times, 1 op., 1 cl., 1 op., 1 cl., (ch. 3, s.c., ch. 3, d.c.) twice, 1 op., 1 cl., 1 op. *12th row:* 1 op., 1 cl., 1 op., ch. 5, d.c., ch. 5, 1 cl., 1 op., 1 cl., 1 op., (ch. 3, s.c., ch. 3, d.c.) twice, ch. 3, s.c., ch. 3, 1 cl., 7 op. *13th row:* 4 op., 1 cl., 2 op., 1 cl., (ch. 5, d.c.) 3 times, (1 op., 1 cl.) twice, (ch. 3, s.c., ch. 3, d.c.) twice, 1 op., 1 cl., 1 op., ch. 14. *14th row:* 3 op., 14 ch., 2 op., 1 cl., (ch. 5, d.c.) twice, (1 op., 1 cl., 1 op., 2 cl.) twice, 2 op., 1 cl., 1 op., 1 cl., 3 op. *15th row:* 3 op., 1 cl., 2 op., 1 cl., 2 op., 5 cl., 2 op., 1 cl., 1 op., 2 cl., 1 op., 1 cl., 6 op. *16th row:* 7 op., 6 cl., 2 op., 1 cl., 1 op., 1 cl., (2 op., 1 cl.) twice, 4 op. *17th row:* 9 op., 1 cl., 1 op., 4 cl., 1 op., 3 cl., 9 op. *18th row:* 11 op., 9 cl., 8 op. (this is center row of butterfly). Reverse instructions for other half.

The square in corner can easily be followed from the illustration. To begin the next butterfly to square, join thread, ch. 26; repeat from 4th row. Work all around lower edge with s.c. and picot.

CORTICELLI MERCERIZED COTTONS



Silk Tunic No. 708

Size 32 to 34

To offset the straight lines of this model it is knitted in a pretty diamond mesh pattern. It is strikingly effective in a deep shade of American Beauty,

with stripes of pale blue, cream, and chartreuse introduced into the long roll collar and turned back cuffs and around the bottom is a deep fringe of the silk.

Materials: Corticelli Sweater Silk, 9 balls American Beauty No. 682.3 and a small portion of a ball each of Cream No. 476, Baby Blue No. 423, and Chartreuse No. 1005. One pair of No. 4 Knitting Needles. A second attractive color selection for this model is Green No. 46, with stripes of Cream No. 476, Pink No. 300, and Baby Blue No. 423.

Instructions: The number of stitches cast on must be divisible by 8.

Cast on 96 sts. *1st row:* * Purl 1, k. 7; repeat to end of row, ending with k. 7. *2d row:* Knit 1, p. 5, *k. 1, p. 1, k. 1, p. 5; repeat from * across row, ending with k. 1, p. 1. *3d row:* Knit 2, p. 1, *k. 3, p. 1; repeat from * across row, ending with p. 1, k. 1. *4th row:* Purl 2, *k. 1, p. 1, k. 1, p. 5; repeat from * across row, ending with p. 3. *5th row:* Knit 4, *p. 1, k. 7; repeat from *, ending with k. 3. *6th row:* Purl 2, *k. 1, p. 1, k. 1, p. 5; repeat from *, ending with p. 3. *7th row:* Knit 2, *p. 1, k. 3; repeat from *, ending with p. 1, k. 1. *8th row:* Knit 1, p. 5, *k. 1, p. 1, k. 1, p. 5; repeat from *, ending with k. 1, p. 1. *9th row:* *Purl 1, k. 7; repeat from * across row, ending with k. 7. (This 9th row is like 1st row.) *10th row:* Like 2d. *11th row:* Like 3d, etc. This pattern is kept for the entire work, and any break in it occasioned by increase or decrease in shaping the garment must be confined to ends of needle.

Knit 18½ squares, which will bring work to sleeve, cast on 5 sts. at ending of needle each side 18 times or until there are 90 sts. added, making 275 sts. on the needle. Work 58 rows in the pattern, which will bring work to neck, knit up towards neck 128 sts., bind off 19 sts. for back of neck, and on the other 128 sts. knit 10 rows; next row widen 1 st. at neck end of needle, and repeat this widening (1 st. at neck end of needle) every 11th row, but on the 49th row commence taking off sleeve by binding off 5 sts. at sleeve end of needle each time until 90 sts. have been bound off, then knit straight on the under-

Continued at bottom of page 47



CORTICELLI MERCERIZED COTTONS



Fire Screen Embroidered in Cross Stitch No. 709

A three section mahogany frame, with panels of black satin on which are embroidered a dignified peacock for the center and four gay little butterflies on each side panel. The work is done in cross stitch in suitable shades of red, blue, green, and brown embroidery silk. The center panel measures 18 by 27 inches and the side panels are just half as wide. Work the design over canvas which has been smoothly basted over the black satin. Draw each stitch of the cross-work designs through both materials, and when completed cut and draw away the threads of the canvas.

A complete work diagram of the peacock and butterfly designs, showing just where to use each color, and also stating the materials required, may be purchased from your dealer or by mail. Price, 15 cents. When ordering by mail, send to the Corticelli Silk Mills, Florence, Mass.

Silk Tunic No. 708, continued from page 46

arm side, but continue the widening at front every 11th row until there are 8 blocks from ending of sleeve; knit to front of garment and break thread. Knit other side the same to this point, then knit all the stitches on to the one needle and work $10\frac{1}{2}$ more blocks, always keeping the pattern except when necessary to break it on account of the increase and decrease for sleeves and front.

COLLAR: With the American Beauty cast on 228 sts., knit 9 ribs in plain Garter stitch; join Green, knit one rib; join Blue, knit one rib; join Cream, knit one rib; then one rib of American Beauty; join another thread of American Beauty and knit one rib with the double thread; bind off.

CUFFS: With American Beauty cast on 58 sts., knit 11 ribs, make same stripe as in collar and finish the same.

Sew up under-arms and sleeves; sew collar all the way around opening for neck, finish opening with crocheted cords and two balls crocheted over two wooden beads. Sew up cuff and sew on to sleeve, or if sleeve is desired longer sew sleeve down into cuff just below stripe.

CORTICELLI MERCERIZED COTTONS



Art. 66

Corticelli Mercerized Cordonnet

Art. 66

Made from fine quality long staple mercerized cotton. It has a perfect "cable-laid" twist, a snowy whiteness and a sparkling lustre. Excellent for crocheting and tatting. Look for the same Kitten Head you always demand on your spool silk.

Art. 66 is made in Snow White, sizes 3, 5, 10, 15, 20, 30, 40, 50, 60, 70, 80 and 100.

Ecrú No. 356, in sizes 3 to 70 inclusive.

Colors: Light Blue No. 208, Blue No. 213, Delft Blue No. 215, Pink No. 291, Beauty Pink No. 294, Yellow No. 345, Wistaria No. 387, and Green No. 246, in sizes 10, 30, 50 and 70 only.

Linen No. 355 made in sizes 3 to 70 inclusive.



Art. 43

Art. 43 "Tatting"

The midget size $\frac{1}{8}$ oz. ball of the same quality cordonnet as the famous **CMC**, Art. 66. Made in size 70 only in White and the following fast dye colors: Light Blue No. 208, Blue No. 213, Delft Blue No. 215, Pink No. 291, Beauty Pink No. 294, Yellow No. 345, Wistaria No. 387, and Green No. 246.



Art. 453

PRINCESS PEARL TRADE MARK MERCERIZED CROCHET COTTON

For Crocheting and Knitting

A full size, lofty, smooth and lustrous thread, just the right spin and twist for crocheting edgings for towels, centerpieces, wash cloths, sweaters, hats, caps, tam-o'-shanters, slippers, and bags of every description. Made of mercerized long staple cotton.



Art. 85

Your choice of the following colors in sizes 3 (coarse) or 5 (fine): 474 White, 476 Cream, 357 Tan, 355 Linen, 342 Lt. Yellow, 344 Yellow, 93 Dk. Lavender, 423 Baby Blue, 34 Blue, 433 Blue, 388 Grey, 300 Pink, 235 Baby Pink, 237 Deep Pink, 47 Light Green, 46 Green, 45 Dark Green, 470 Black, 338 Brown, 436 Blue, 462 Turquoise, and 95 Purple.

Art. 453, Size 3 (coarse), $1\frac{1}{2}$ ounces cotton on a ball. All colors as given above.

Art. 455, Size 5 (fine), $1\frac{1}{2}$ ounces cotton on a ball. All colors as given above.

Art. 83 and Art. 85. Made from the same choice long staple cotton as Arts. 453 and 455, put up in small balls containing $\frac{1}{2}$ ounce of cotton. Art. 83, Size 3 (coarse). Art. 85, Size 5 (fine). Made in White and all of the above colors.

Corticelli Mercerized Cottons Are Sold Everywhere

Corticelli

FINGERING YARNS

Fulfill your desire for the best in knitting and crochet yarns.

Your dealer can get them for you in any of the colors listed below.

List of Colors

8 Apricot	37 Robin's Egg
10 Peach	38 Pekin Blue
16 Scarlet	86 Blue Mixture
17 La France	39½ Navy
18 Victory Red	41 Sports Green
19 Garnet	42 Shamrock
20 Baby Pink	43 Chartreuse
21 Blossom	44 Apple Green
22 Old Rose	46 Mignonette
23 Rose	47 Sea Green
24 Beauty Rose	48 Reseda
25 Cardinal	49 Myrtle Green
27 Coral	50 Maize
28 Bermuda Pink	54 Goldenrod
29 Cactus	57 Wood Brown
31 Baby Blue	58 Tobacco Brown
33 Liberty Blue	59 Seal Brown
34 Joffre Blue	60 Sand
35 Delft Blue	61 Dove Grey
35½ Petain Blue	62 London Grey
36 Turquoise	63 Mole



64 Taupe	85 Blue Heather
65 Champagne	84 Brown Heather
66 Fawn	88 Bronze Heather
69 Oxford	89 Heather Green
74 Violet	91 Heather
75 Purple	92 Red Heather
76 Pansy	98 White
79 Wistaria	99 Black
81 Old Gold	

Corticelli Knitola Fingering Yarn

is very soft and pliable, yet its "long staple" prevents it from stretching after the garment has been used for a time. It will not grow harsh from repeated washings, and lends itself to all knitting where durability, firmness, and this soft texture are desired. It should be used for sweaters, stockings, helmets, automobile caps and bonnets, scarfs, wristlets, afghans, soldiers' wear, and, in fact, it is THE yarn for general use.

Corticelli Tezola

is far superior to and quite different from the many so-called Teazle yarns on the market. When brushed up it does not have a shaggy appearance, but a long, thick nap similar to Angora fur. If one desires to use it for plain knitting it works up equally well, for it has a soft, full, loose twist, and will knit up into a much handsomer looking garment than any other Teazle wool.

Corticelli Scotola

is the genuine four-ply Scotch Fingering Yarn. It is soft, well twisted, and of great strength and durability. Articles made from it will hold their shape and have a soft, firm texture, which will be retained indefinitely. It is unsurpassed for general knitting.

Corticelli Flosola

is used in high class, light weight sweaters for ladies, misses, and children, also for vests, scarfs, shawls, etc. This yarn is the same as the imported Shetland Floss made from a long staple wavy wool, thus producing a lofty yarn, which when knit will not crush and mat like a soft stock, but will retain its shape and have the same springy effect as when first knit. If washed properly it will still retain its luster and elasticity.

Corticelli Angola

is a new yarn for fancy knitting, made from the best wool, combined with the fleece of the Angora goat, hence the name "Angola." It has a high luster, with a finish almost as soft and beautiful as silk, and is intended for very high class garments suitable for dressy wear. It can be brushed, if desired, but its beauty is greater when left in its original state. Nothing finer can be had for high class sweaters and coats, but it is not intended for garments subjected to rough wear.

Corticelli Americantown

A soft, pliant, general utility yarn. Garments made from it retain their shape and have a durable, firm texture that permits of frequent washing without stretching or growing harsh. A suitable yarn to work up into warm, soft sweaters, stockings, caps, scarfs, slippers, wristlets, etc.

Color Card, showing all colors in which the different kinds of Corticelli yarn are made, mailed to any address on receipt of 28 cents. Corticelli Silk Mills, Adv. Dept., Florence, Mass.

"FRANCIA"

Mrs. Castle delights to fashion lovely frocks from Corticelli "Satin Patria." It is so soft in weave—so rich and lustrous—the ideal material for practical styles as well as for dressier frocks.

Corticelli "Satin Militaire," of slightly lighter weave, has the same exquisite sheen and colors.

Corticelli Service Taffeta is in exceptionally practical weight for street and afternoon frocks, and Corticelli Thistle-down Taffeta because of its wonderful lightness and luster makes the daintiest of dresses.

If your store has not a complete exhibition of the newest Corticelli silks, satins, georgettes and crepes de chine, please write us.

CORTICELLI DRESS SILKS

An attractive booklet showing several handsome colored plates of Mrs. Castle in effective designs of her own exclusive designing, and fully describing the complete line of Corticelli dress silks, will be sent on your request. Address, CORTICELLI SILK MILLS Florence, Mass.

