

Antique Pattern Library

For more information, please see our website at: <http://www.antiquepatternlibrary.org>

This is a scan of an antique book that is, to the best of our knowledge, in the public domain. The scan itself has been edited for readability, and is licensed under the **Creative Commons** Attribution-NonCommercial-ShareAlike License. To view a copy of this license, visit <http://creativecommons.org/licenses/by-nc-sa/2.5/> or send a letter to Creative Commons, 559 Nathan Abbott Way, Stanford, California 94305, USA.

You may share copies or printouts of this scan freely. You may not sell copies or printouts.

Antique Pattern Library is a project of New Media Arts, Inc. <http://www.newmediaarts.org>, a nonprofit organization tax-exempt under IRC 501(c)(3). Donations may be tax deductible, depending on your tax status and tax jurisdiction.

Donated by

Debra Carr

Filet Creations

In
**Yokes
and
Gifts**

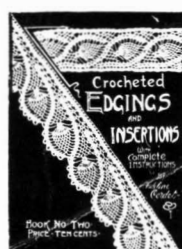
Illustrated
with
instructions
by
*Adeline
Cordet*



**Book
No.14**



Book No. 1



Book No. 2



Book No. 3



Book No. 4



Book No. 5



Book No. 6



Book No. 7

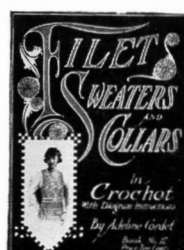
ADELINE CORDET SERIES OF INSTRUCTION BOOKS



Book No. 10



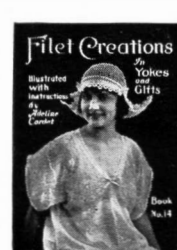
Book No. 11



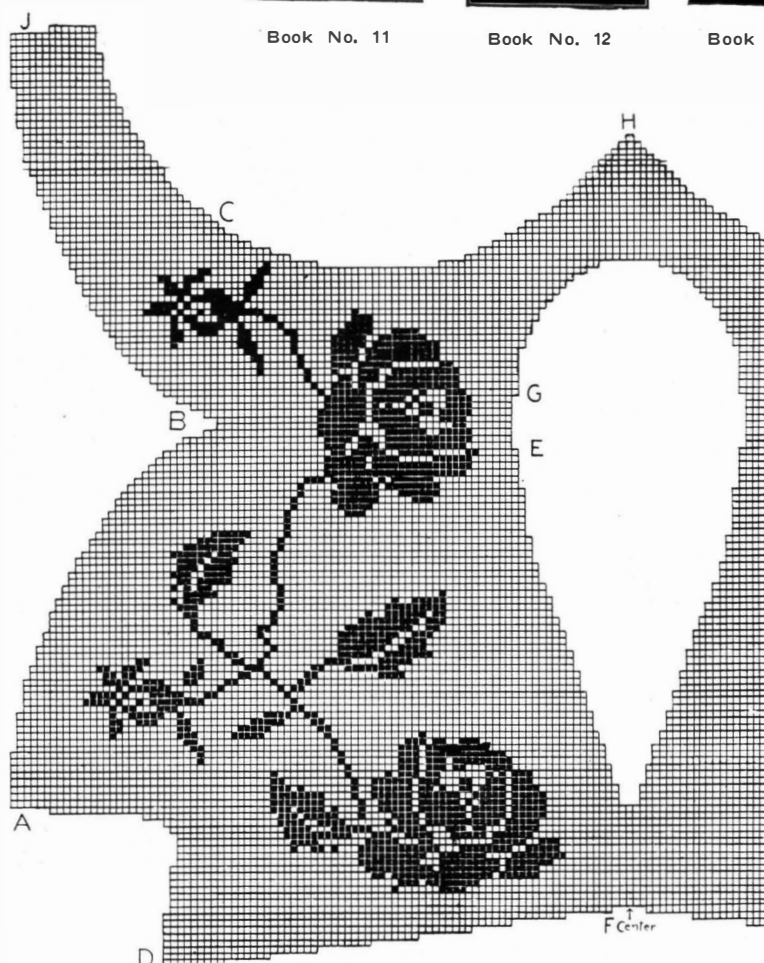
Book No. 12



Book No. 13



Book No. 14



No. 1403 ROSE YOKE.

Requires 6 balls size 50 cotton.

ILLUSTRATED ON FRONT COVER

Start at letter A with 8 o. m., continue following diagram until you reach letter B, then to letter C, continue to letter D, then to letter E, then to letter F. Start at letter G and work to letter H. Start at letter G and work to letter J. Now start at front and work other half of yoke the same way. When filet is finished work s. c. around yoke.

Edge—1st Row—2 d. t. in each m.; keep 1s on hook, pull thread through both, ch. 2.

2nd Row—ch. 3 over every 2 d. t.

3rd Row—1 d. c. in first 1, 2 d. c., ch. 3, 2 d. c. in 2nd 1.

4th Row—3 p's, ch. 4 to next point.

NEW WAY TO ADD MESHERS AT END OF ROW.

When working a row in which meshes are added at last end of row, in place of working the last treble of the block now there, ch. 2, and fasten with a slip stitch to the same loop on which you usually work the treble; this bringing the thread even with the lower edge of row; now work a chain long enough on which to make the extra meshes. If one mesh is wanted make a ch. of 6; 2 meshes, ch. 9; 3 meshes, ch. 12; that is, add three stitches for each mesh after the first; turn and work either block or space on chain, which is required, now fasten to top of last mesh worked, before chain was added, with slip stitch; turn, slip stitch to end of meshes which have been added and now you will be ready to commence next row.



No. 1404 POINSETTA YOKE.

Requires 4 balls size 50 cotton.

Start at letter A with 2 o. m., follow diagram to letter B. Start second point at letter C with 2 o. m. and work to letter D. Start third point at letter E, work to letter F. When points are finished start at letter G, continue to letter H, work to letter J. Start at letter K, follow diagram to letter L, then work across back, following diagram until finished.

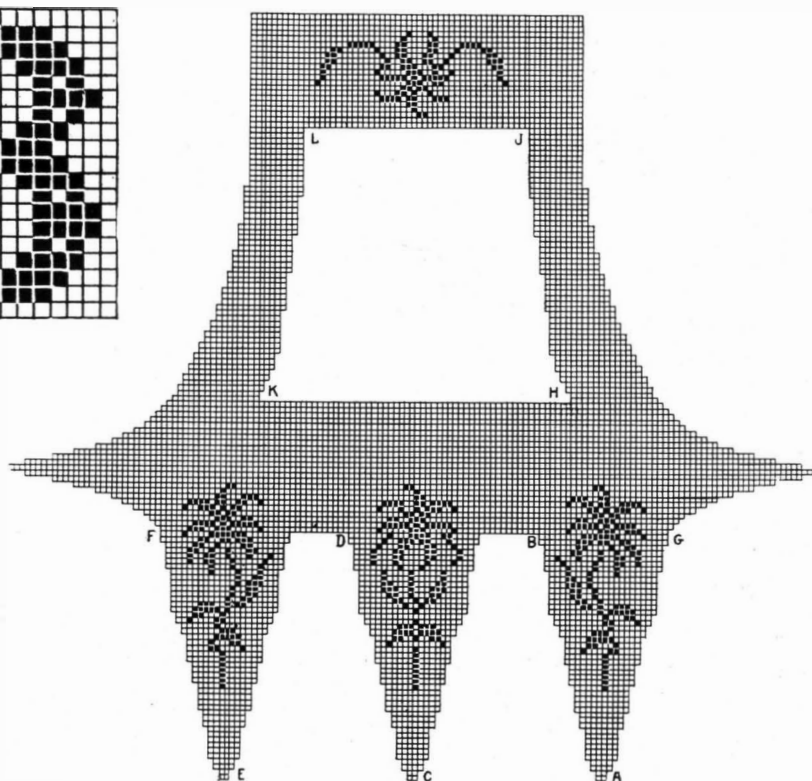
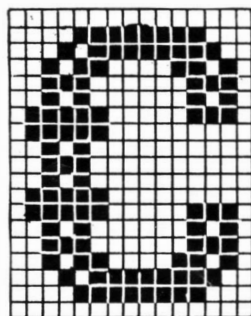
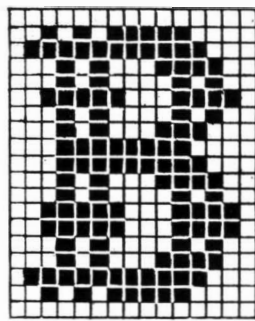
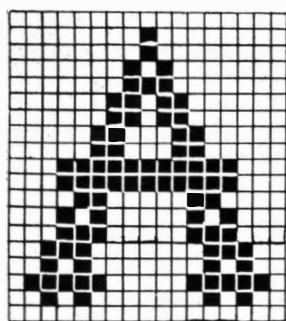
Sleeve Band—Start with 20 o. m. and follow center design as shown in points of yoke.

Edge—1st Row—1 sl. st., ch. 5, 1 d. c., ch. 2, 1 d. c., 3 d. c. with 2 chs. bet. each in corner.

2nd Row—ch. 4 over every d. c.

3rd Row—1 sl. st. in 1st 1, 8 d. c. in 2nd 1, 1 sl. st. in 3rd 1, ch. 4, 1 sl. st. in 4th 1, ch. 4, 1 sl. st. in 5th 1, 8 d. c. in 6th 1.

4th Row—1 sl. st. in 1st 1, ch. 3, 4 d. c. with 1 ch. bet. each over 1st 4 d. c., 3 p. 4 d. c. with 1 ch. bet. each over 2nd 4 d. c., ch. 3, 1 sl. st. over same.





No. 1400 BOUDOIR CAP.

Requires 4 balls size 50 cotton.

Back—ch. 14 and 3 to turn, 16 d. c. Follow design.

1st Row—ch. 3, 1 d. c.

2nd Row—All d. c.

3rd Row—*ch. 3, 1 s. c., ch. 3, 1 d. c.

4th Row—ch. 5, 1 d. c., repeat from * 10 times.

15th Row—All d. c.

16th Row—4 d. c., ch. 2.

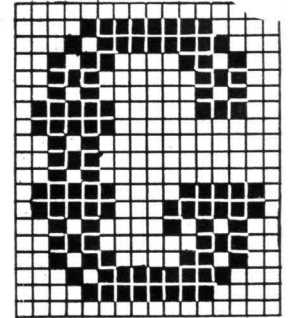
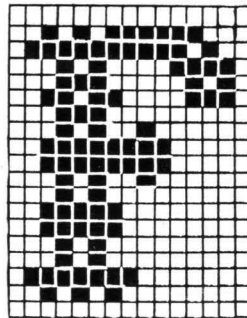
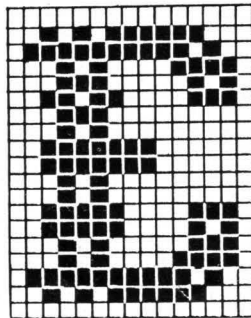
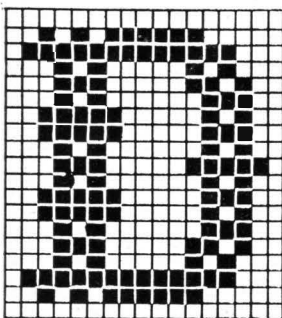
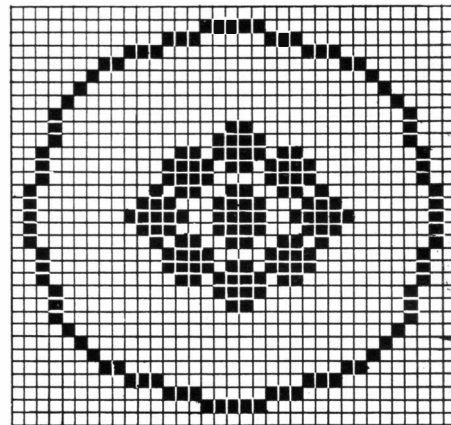
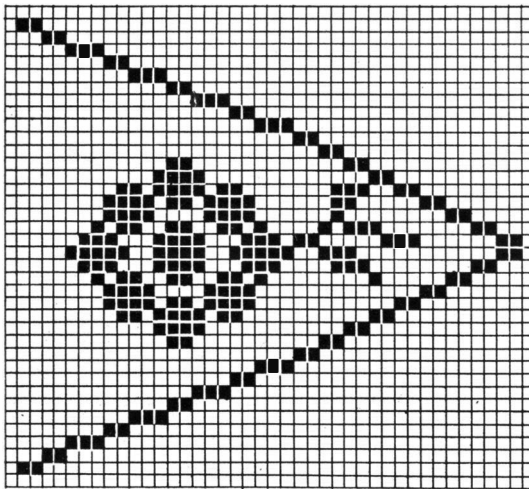
17th Row—ch. 2, 1 d. c.

18th Row—4 d. c., ch. 2.

19th Row—All d. c.

Now start points in center of back and work to one side 4 d. c., 34 o. m., 4 d. c. Follow design to point. Make other side the same.

Edge—ch. 7, 1 t. t., ch. 3, 1 t. t., all around, 7 s. c. over ch., ch. 5, 1 sl. st. in ch., 5 s. c., 1 p., ch. 3, 1 p., ch. 3, 1 p., 1 sl. st. in ch., ch. 15, 5 s. c., sl. st. in ring, 4 s. c., ch. 9, sl. st. over in ring, ch. 3, 1 p., ch. 3, 1 p., ch. 3, 1 p., ch. 5 into ring, ch. 7 over ch., ch. 15, 1 sl. st., ch. 5, 1 sl. st. into ring and continue around.



No. 1402 BABY CAP.

Requires 3 balls size 70 cotton.

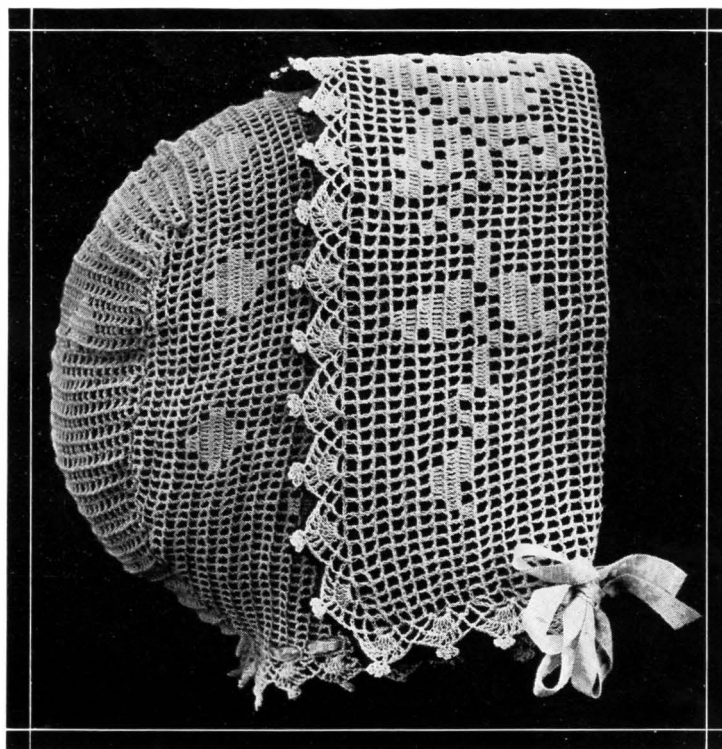
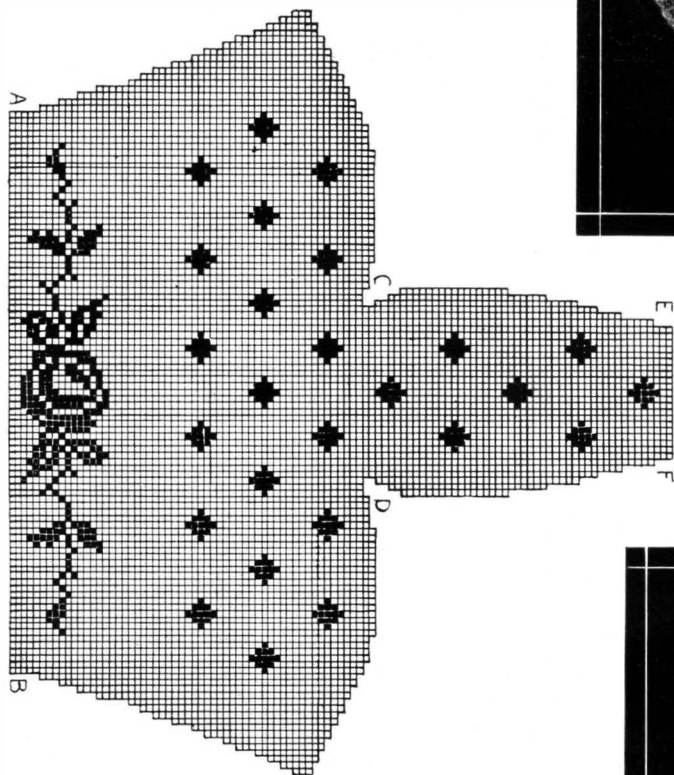
Start at A B, making a chain of 272 sts. for the 89 o. m., when C is reached continue to D and fasten thread at D and work from C D to E. F.

Edge—1st Row—1 sl. st., ch. 5, 1 d. c.

2nd Row—4 over every d. c.

3rd Row—1 sl. st. in 1st l., 1 sl. st. in 4th l., ch. 4, 1 sl. st. in 5th l., 8 d. c. in 6th l.

4th Row—1 sl. st. in 1st l., ch. 3, 4 d. c. with 1 ch. bet. each over 1st, 4 d. c., 3 p., 4 d. c. with 1 ch. bet. each over 2nd, 4 d. c., ch. 3, 1 sl. st. over same.



No. 1401 BABY CAP.

Requires 3 balls size 70 cotton.

Back—ch. 7 join in ring, ch. 5, 4 dl. tr. in ch., ch. 5, 1 sl. st., ch. 4, 4 dl. tr., ch. 5, 1 sl. st. 4 times. Make 12 of these clover leaves and join in diamond shape.

1st Row—ch. 7, 4 times over needle, sl. st. in petal ch. 2 st., then 2 again and repeat all around.

2nd Row—1 d. c., ch. 1, 1 d. c., ch. 1.

3rd Row—ch. 4, 2 d. c., ch. 4, 1 sl. st. in m., ch. 3, 2 d. c.

4th, 5th, 6th and 7th Rows—Same as 3rd Row.

8th Row—Same as 2nd Row. Then make 20 leaves and join between m.

9th Row—Same as 8th Row.

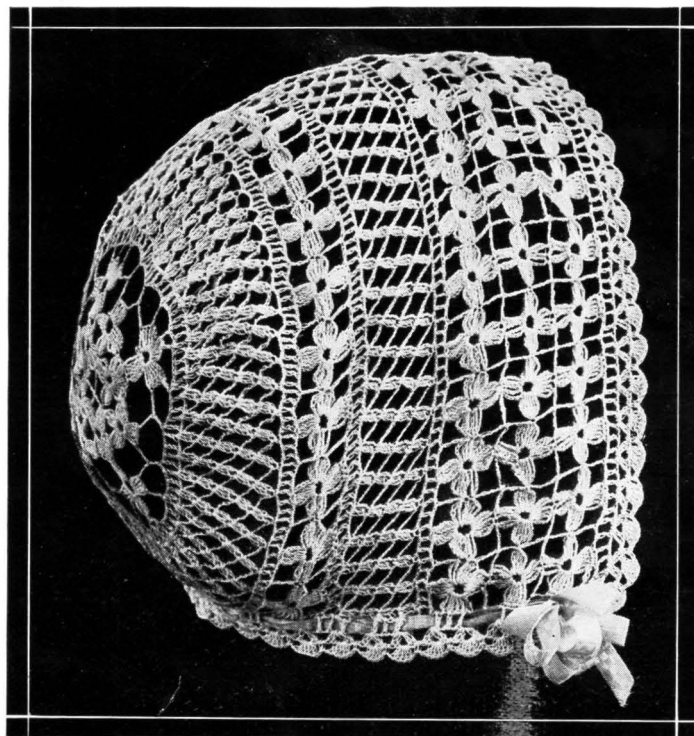
10th, 11th, 12 and 13th Rows—Same as 4th Row.

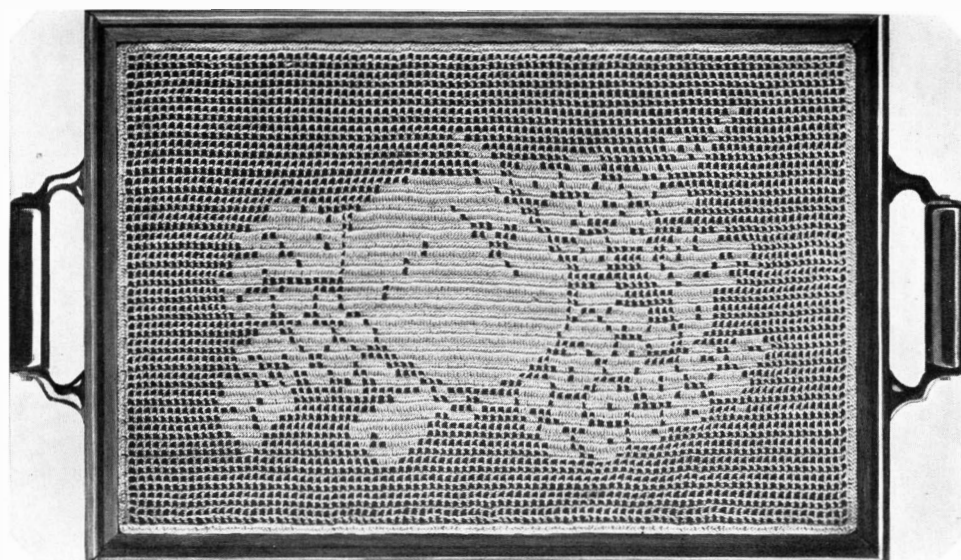
14th Row—Same as 8th Row. Then make 60 leaves and join three rows together.

15th Row—Same as 8th Row.

Edge—1st Row—2 d. c., ch. 2, 2 d. c. in m., repeat.

2nd Row—1 sl. st., 5 d. c., 1 sl. st., repeat.

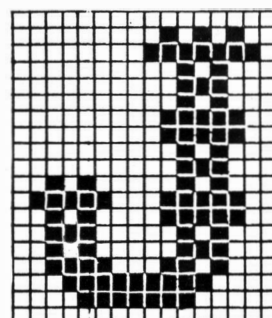
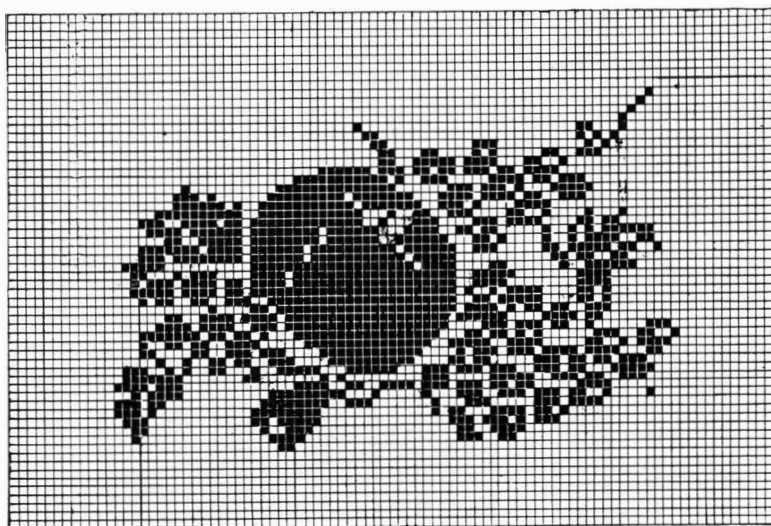
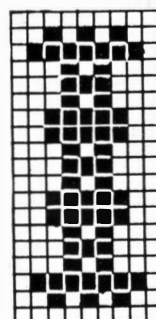
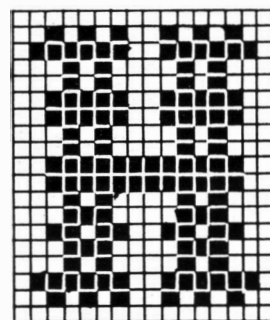


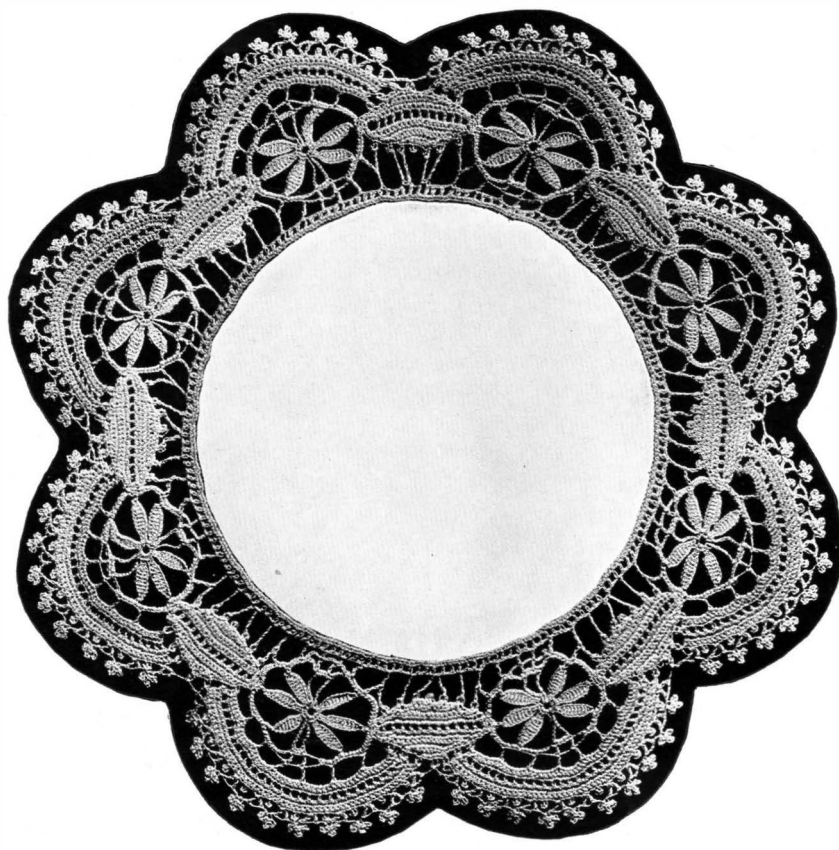


No. 1414 TRAY CLOTH.

Requires 3 balls size 30 cotton.

Ch. 185 for the 60 o. m. and then follow diagram.





No. 1410 CLUNY LACE

Medallion—ch. 7 join in ring *ch. 11, turn, 1 s. c., 8 d. c., 2 s. c. join in ring, ch. 11, turn, 1 s. c., 8 d. c., 2 s. c. join in ring, turn, ch. 11, turn, 1 s. c., 8 d. c., 2 s. c. join, ch. 20, join in ring*, ch. 8, sl. st. in top of petal, ch. 8, sl. st. in petal, ch. 8, sl. st. in ch. 4 d. c., ch. 8, sl. st. in petal, ch. 8, sl. st. in petal, ch. 8, sl. st. in ch., 4 d. c. over ch., sl. st., ch. 4, 4 d. c. over ch., 8 d. c., sl. st., 8 d. c., sl. st., 4 d. c., ch. 4, 1 d. c., ch. 4, 1 d. c., ch. 4, 8 d. c., sl. st., 8 d. c., sl. st., ch. 4, 1 d. c., ch. 4, 1 d. c., ch. 4 and fasten.

Petal Medallion—ch. 28 turn, 1 d. c., ch. 1, 12 times, turn, 24 d. c.* turn, 3 sl. st., 18 d. c., turn, 3 sl. st., 12 d. c., turn, 3 sl. st., 8 d. c., turn, 3 sl. st., 4 d. c., repeat on other side from *, 2 d. c., 1 p. until you have 7 p's on each side, join to round medallion.

Bottom of Lace—* 1 d. c. over d. c., ch. 4, 1 d. c., 1 t. t., draw through 2 sts., then 2 more, thread over hook 3 times, work 2 sts. at a time until all are taken off, ch. 5, 1 t. t., ch. 1, 1 t. t., ch. 5 over hook 5 times, work off 2 sts., then 2 more thread over hook 2 times, work off 2 sts. until all are taken off, ch. 5, 1 t., ch. 5, 1 d. c., repeat from *.

2nd Row—ch. 1, 1 sdc., ch. 1, 1 sdc.

3rd Row—d. c. all around.

Top Edging—Fasten thread in p., ch. 6, 1 d. c., 7 times, turn, 6 s. c. over ch., turn, 1 sdc. over s. c., ch. 1, 1 sdc., turn, *1 s. c. in ch., 1 s. c. in s. c., turn and repeat from * turn 5 s. c., 1 p. finish each round with 10 p.

Last Row—ch. 4, 1 d. c. in d. c., 3 p., 1 d. c., ch. 3, 1 d. c., 3 p., 1 d. c., ch. 3 all around.

No. 1412 CLUNY LACE.

Medallion—ch. 20, 1 s. c., 7 d. c., ch. 3, 1 s. c., 7 d. c., 1 s. c., turn, ch. 12, 1 d. c., ch. 3, 1 d. c., ch. 3, 1 d. c., turn, ch. 9, 1 d. c. in end of first petal, turn, 1 s. c., 7 d. c., 1 s. c., ch. 3, 1 s. c., ch. 3, 1 s. c., 7 d. c., 1 s. c., turn, ch. 12, 1 s. c., ch. 3, 1 s. c., ch. 3, 1 s. c., ch. 3, 1 s. c., ch. 9, 1 d. c. in petal, turn, 1 s. c., 7 d. c., 1 s. c., ch. 3, 1 s. c., ch. 3, 1 s. c., 7 d. c., 1 s. c., turn, ch. 12, 1 s. c., ch. 3, 1 s. c., ch. 9, 1 d. c. in petal, turn, 1 s. c., 7 d. c., 1 s. c., ch. 3, 1 s. c., 7 d. c., 1 s. c. in petal, turn, ch. 12, 1 s. c., ch. 9, 1 d. c. in petal, turn, 1 s. c., 7 d. c., 1 s. c., 7 d. c., fasten thread.

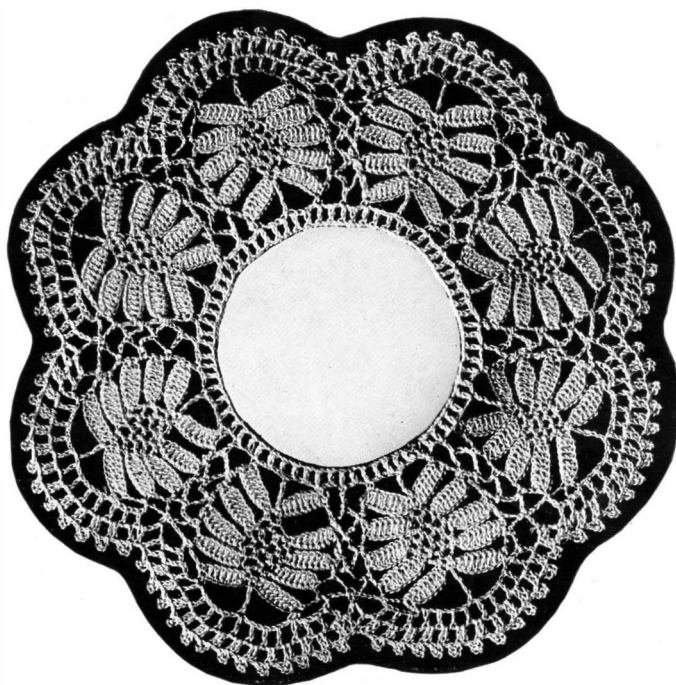
Top of Lace—1st Row—ch. 7, 1 d. c., 4 times, join to next medallion, ch. 3, 1 d. c. in ch., ch. 3, 1 d. c. in ch., 6 times, ch. 7, 1 d. c. in petal, ch. 7, 1 t. t., ch. 7, 1 d. c. in petal, repeat.

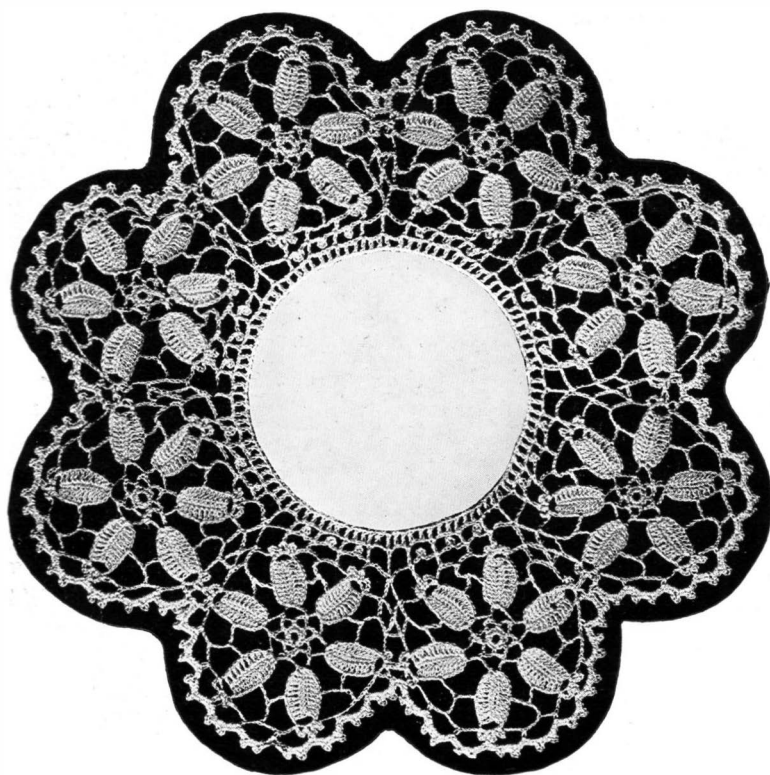
2nd Row—Fasten thread with d. c. between 2 medallions, ch. 2, 1 d. c., repeat.

3rd Row—2 d. c., 1 p., repeat.

Bottom—1st Row—Fasten thread in petal, ch. 3, 1 d. c. in ch., ch. 3, 1 d. c. in ch., 1 d. c. in petal, ch. 5, 1 t. t., ch. 5, 1 d. c. in petal, repeat.

2nd Row—1 d. c., ch. 1, 1 d. c., ch. 1, repeat.





No. 1413 CLUNY LACE.

Medallion—ch. 7, join in ring, 12 s. c. in ring. *ch. 14, turn, 10 s. c. over ch., turn, 10 d. c. in s. c., ch. 5, 10 d. c.* repeat. Fasten thread in center top of petal, ch. 7, throw over needle 4 times sl. in side of petal, work off 2 and 2 again, throw over needle twice, work off 2 at a time, 4 times, ch. 7, 3 p., repeat.

Top Row—From center picot, ch. 3, 1 p., ch. 3, 1 d. c., ch. 3, 1 p., ch. 3, 1 d. c., ch. 3, 1 p., ch. 3, 1 d. c., ch. 10, 1 s. c. in ch., ch. 7, 1 s. c. in ch., ch. 3, 1 s. c. in ch., ch. 3, 1 s. c. in ch., ch. 3, 1 s. c., ch. 3, 1 s. c., ch. 5, 1 d. c., ch. 5, 1 d. c., repeat.

2nd Row—ch. 5, 1 d. c., ch. 5, 1 d. c.

3rd Row—1 d. c., ch. 1, 1 d. c., ch. 1, 1 d. c.

Top Edge—1st Row—ch. 7, 1 s. c., ch. 7, 1 s. c.

2nd Row—3 s. c., 1 p., 3 s. c., 1 p.

No. 1411 CLUNY LACE.

Large Medallion—ch. 7, join in ring, ch. 5, 1 s. c. in ring 8 times, ch. 3, sl. st. to center of 5th ch., ch. 5, 1 s. c. 8 times, ch. 10, 1 s. c., 6 d. c., 1 s. c., ch. 1, sl. in next until you have 8 petals.

Diamond Medallion—ch. 10, join in ring, ch. 5, 5 d. t., ch. 5, 4 times, 3 s. c., 1 p., 3 s. c., 1 p., make 12 p's join to petal.

Bottom—1st Row—ch. 2, 1 s. c., ch. 2, 1 s. c., ch. 5, 1 t. t., ch. 5, thread over needle 3 times, work 2 sts. then 2 sts., thread over needle, work off 2 sts. at a time until all are taken off, repeat.

2nd Row—ch. 1, 1 d. c., ch. 1, 1 d. c.

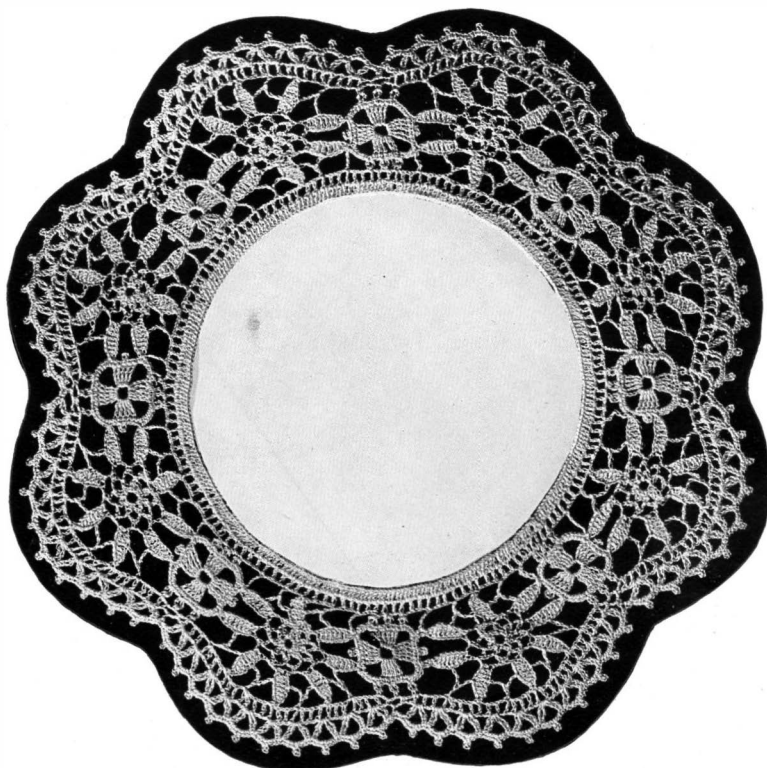
3rd Row—All d. c.

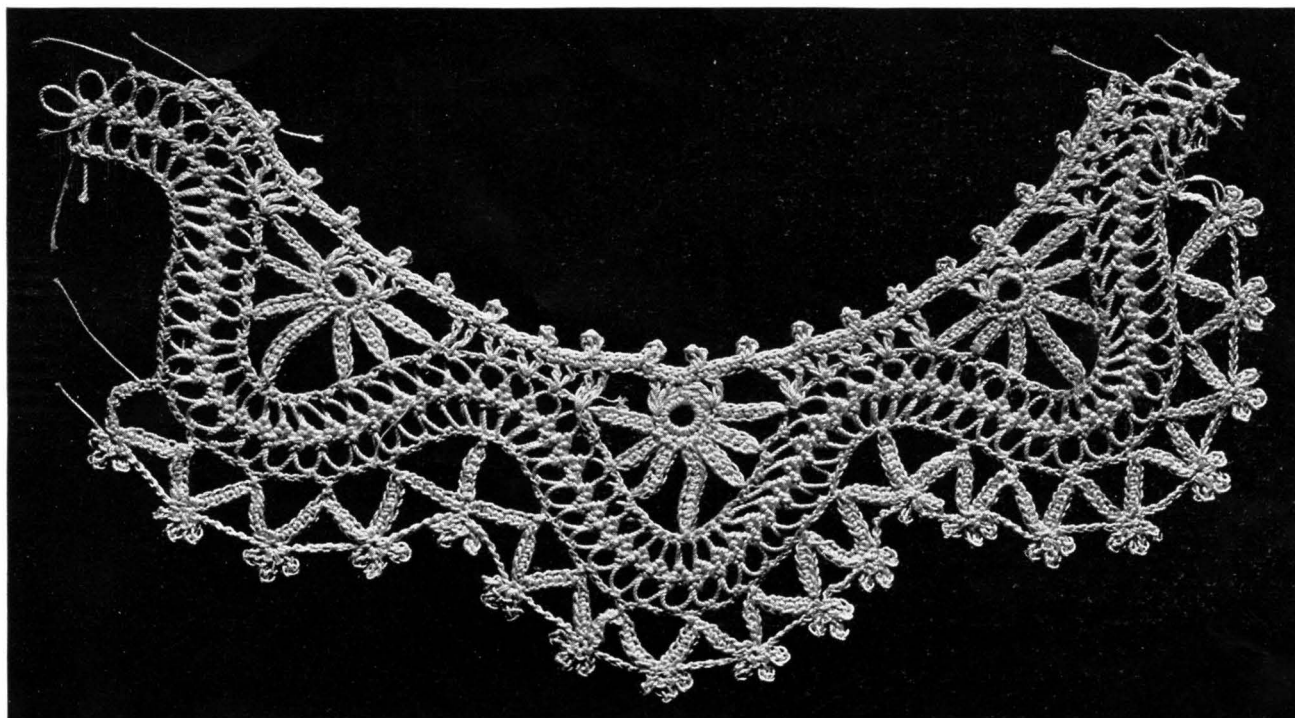
Top—1st Row—ch. 3, 1 s. c. in p., ch. 3, 1 s. c. in p., ch. 5, thread over needle 3 times, work off 2 sts. then 2 again, thread over needle 2 times, work 2 sts. at a time until all are taken off, repeat.

2nd Row—ch. 1, 1 d. c., ch. 1, 1 d. c.

3rd Row—2 d. t. in m., skip 2 m., 2 d. t. in m., ch. 5, 2 d. t. in m., skip 2 m., 2 d. t. in m., ch. 5, repeat.

4th Row—3 s. c., 1 p., 3 s. c., 1 p.





No. 1407 EDGE

Requires for hair pin braid Mercerized Crochet No. 3.

For other work on same Mercerized Crochet No. 40.

● One steel crochet hook to match.

Scalloped edge for round center piece. Imitation Cluny.

To Round Braid for Scallops.—Leaving several loops of braid for lapping at close, count off 23 loops for each scallop desired. Catch thread in loop, * ch. 2 and s. c. in top of next loop * Repeat 3 times. * ch. 3 and s. c. in top of next loop * Repeat 8 times. * ch. 2 and s. c. in top of next loop. * Repeat 3 times.

Without ch. bet. s. c. in top of loops for 6 times. This makes outside row for one scallop. Repeat from beginning for as many scallops as desired. For the other side of the braid work same as above only putting chainless sts. opposite the 3 chain ones and vice versa. This brings braid into shape for scallops. The ring-and-petal designs are inserts; that is they are made separately and stitched in place with needle and thread.

To Make Inserts.—Ch. 7, ring, fill ring with 12 s. c's. Ch. 7, turn, sk. 1 ch. st., 1 s. c. in each of 6 ch. sts., sl. st. to next st. of ring. Repeat this for 3rd, 5th and 7th petals. For 2nd and 6th petals make chain of 6 and fill with 5 s. c's. For

4th, or central petal, ch. 12 and fill with 11 s. c's. Make all inserts and stitch in place.

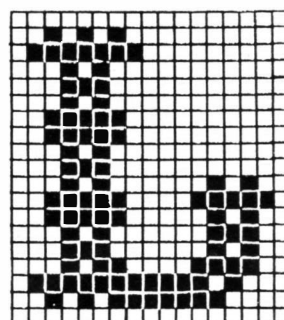
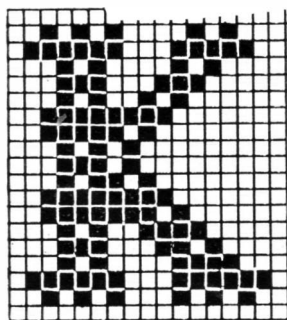
1st Row on Inside—Catch thread in scallop where left-hand petal is joined on, ch. 6, tr. crochet in same place once, D. c. twice with one ch. bet. in next three loops, putting no ch. sts. bet. loops, 2 tr. c. with 1 ch. bet. in scallop where petal of next insert joins on. Ch. 5, * 2 d. c's. with 1 ch. bet. at base of petals * Repeat once, ch. 5 and repeat whole for each scallop.

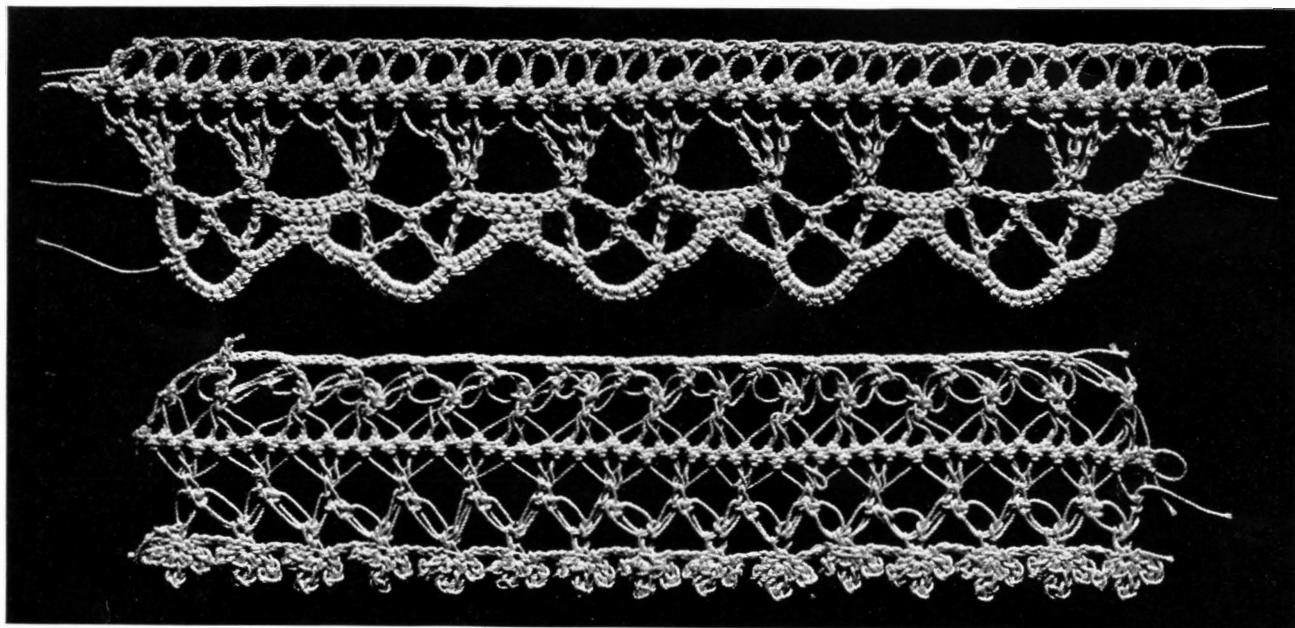
2nd Row—S. c. in each st. of above, putting picot of 4 sts. every five sts.

To Make Outside Edge of Scallops—**1st Row**—Catch thread in center of hollow of scallop, ch. 13, s. c. to side of scallop, ch. 13 and catch to side of scallop 1/3 inch higher up. Repeat, putting 7 chains of 13 sts. around scallop and catching last ch. in center of next hollow, turn, s. c. in 6 sts. of last chain. Repeat for all scallops.

2nd Row—S. c. over entire chain sl. stitching in 7th st. of chain and in crossing to next chain of 13 sk. st. where joined to braid.

3rd Row—* Catch thread in 7th st. of last row, 3 picots of 5 sts. each, ch 5 * Repeat around.





TOP EDGING No. 1408.

LOWER EDGING No. 1409.

No. 1408 EDGE

Requires for hair pin braid Mercerized Crochet No. 3. No. 40 for other part of work. One steel hook to match.

Outside of Edging—1st Row—Catch thread in loop, ch. 5. * tr. c. in next loop, leaving last st. on hook, tr. c. in next loop, drawing thread through all sts. on hook. * ch. 7, tr. c. in next 3 loops.* Repeat.

2nd Row—S. c. over first ch. of 7, *ch. 7, catch in center of next chain of 7, ch. 7, s. c. over next chain.* Repeat.

3rd Row—*Catch in center of first chain of 7, ch. 7 and catch in center of next chain, ch. 4, sk. 2 sts. below and s. c. in four sts., ch. 4 and catch in center of chain.* Repeat.

4th Row—S. c. over whole of last row.

Inside Row—1 s. c. with two chs. bet. in each loop of braid.

No. 1409 EDGE

Requires Mercerized Crochet No. 40. Steel hook to match.

1st—Loop in end of thread. Hook through tops of 3 loops in braid, catch loop in thread and pull through thread over hook and pull through again* 2 knot sts., hook through tops of 3 loops in braid, knot st.* Repeat.

2nd—Outside Row—Catch thread in knot bet. 2 knots. sts. * 3 picots of 5 sts. each, ch. 4, s. c. to next knot bet. sts.* Repeat.

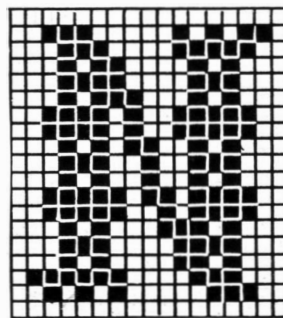
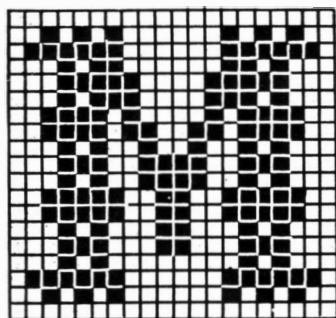
Inside Row—Repeat above, leaving out picots.

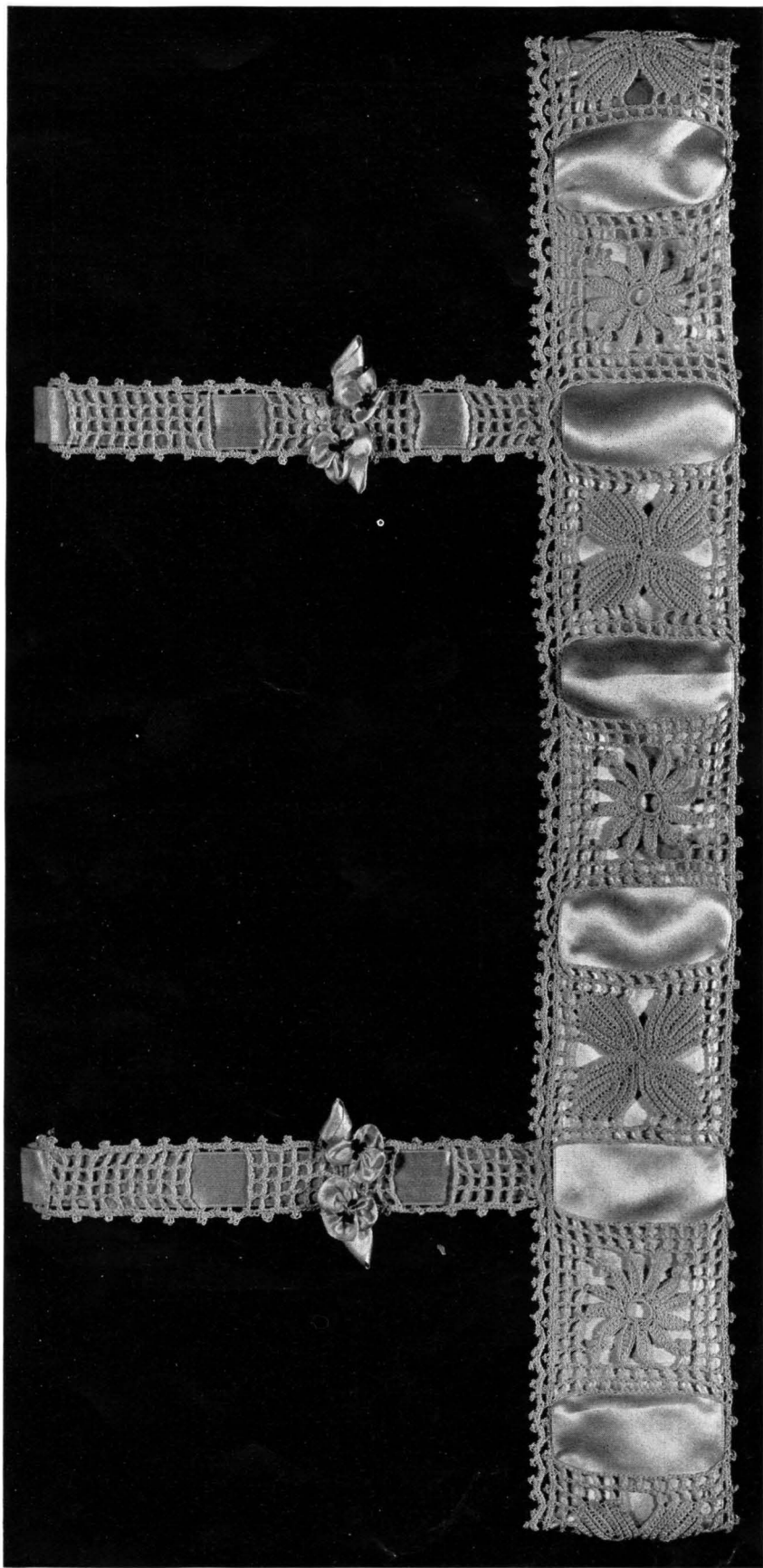
TO MAKE HAIR-PIN BRAID.

Materials—Mercerized Crochet No. 3. One steel hoop, one hair-pin. (An ordinary steel hair-pin will do, but there are special ones made for the purpose.)

Loop in end of thread, wind thread twice around lower end of hair-pin with loop in end of thread, showing between prongs of hair-pin below loops of thread, insert hook in loop at end of thread, reach hook through bet. prongs of hair-pin, catch thread and pull through loop on hook, hook through

front side of loop on left prong, catch thread, pull through. thread over and pull through both loops on hook.* Hook out of loop, turn hair-pin towards you from right to left, hook in loop, catch thread on back side, pull through, hook through front side of loop on left-hand prong, pull through, catch thread, pull through both loops on hook.* Repeat. Slip the braid off the ends of the hair-pin as the work progresses.





No. 1405 LEAF AND SUNF LOWER CAMISOLE YOKE.

Materials—2 balls No. 70, 1 steel hook to match, 1 yd. satin ribbon 2 ins. wide, $\frac{3}{4}$ yd. ribbon $\frac{3}{4}$ -inch wide, 4 small safety pins and ornaments for same.

Leaf Medallion—Ch. 13, turn, sk. 2 chs., 1 s. c. in each of 11 chs., ch. 3, 11 s. c's down other side of chain.* Turn, ch. 1, sk. 1, 11 s. c's back, taking up only back thread of sts., ch. 3, 11 s. c's.* Repeat till there are 3 notches on each side of leaf stem. Break thread over middle of chain of 3. Make four leaves, place together at lower end and stitch together down half their length. Fasten thread in middle stem of one leaf and ch. 8 * 1 d. c. in same st., 1 d. c. with 2 chs. bet. each, in each of three notches on side of leaf, 5 chs. over to next leaf, 4 d. c's., with 2 chs. bet. each, to middle stem of leaf, ch. 5 *. Repeat around. Close at corner and work thread to center of corner chain of five sts., ch. 8, 1 d. c. in same st. Filet (d. c's., with 2 sts. bet. each, in every third st. below) around, close and work thread to center of corner chain. Turn, ch. 38 and catch in next corner, turn, 1 sl. st. in 1 ch., ch. 5 and filet 3 rows of ten meshes each over chain for beading.

Sunflower Medallion—Ch. 12, close in ring, ch. 1, fill ring with 24 s. c's, close. * ch. 9, in ninth st. work 3 picots of 4 sts. each, 1 s. c. in 8th st. of chain, 1 d. c. in each of remaining 7 sts. of chain, wh. ch. finishes petal

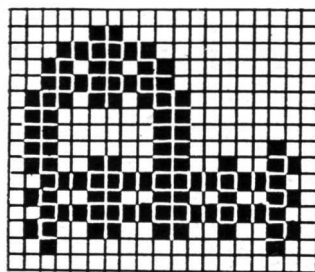
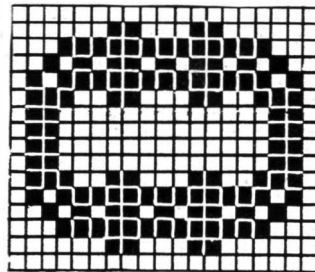
and brings work back to ring. Sk. 1 st. in ring and catch in second. Ch. 9, turn, sk. 1 st., 1 s. c. in 8th st., 1 d. c. in each of remaining 7 sts., sk. 1 st. in ring and catch in second. Ch. 9, turn, sk. 1 st., 1 s. c. in 8th, 1 d. c. in each of remaining 7 sts., sk. 1 st. in ring and catch in second. * Repeat 3 times. This fills ring with 12 petals every third one of which has three picots at top. Break thread and work end in. Fasten thread in center picot of petal. Ch. 8, 1 d. c. in same st. Ch. 5, s. c. in top of next two petals with ch. of 5 bet. Ch. 5, 1 d. c. in top of center picot of next petal, ch. 5, 1 d. c. in same st. Work around in same way, closing at corner and working thread to center of corner chain.

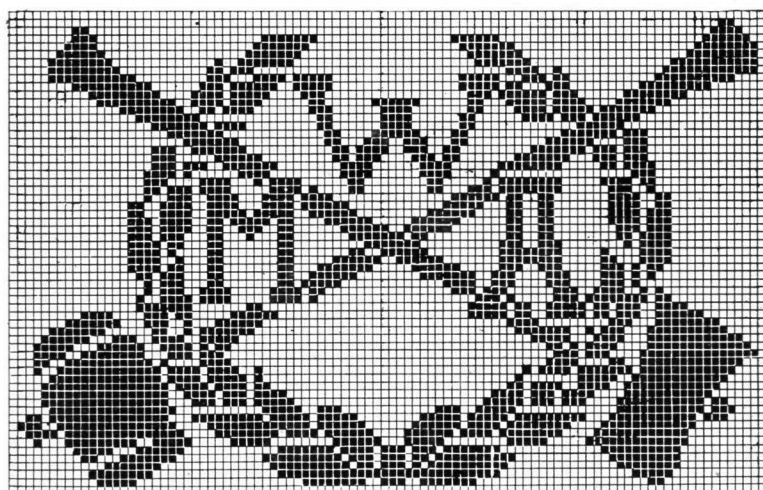
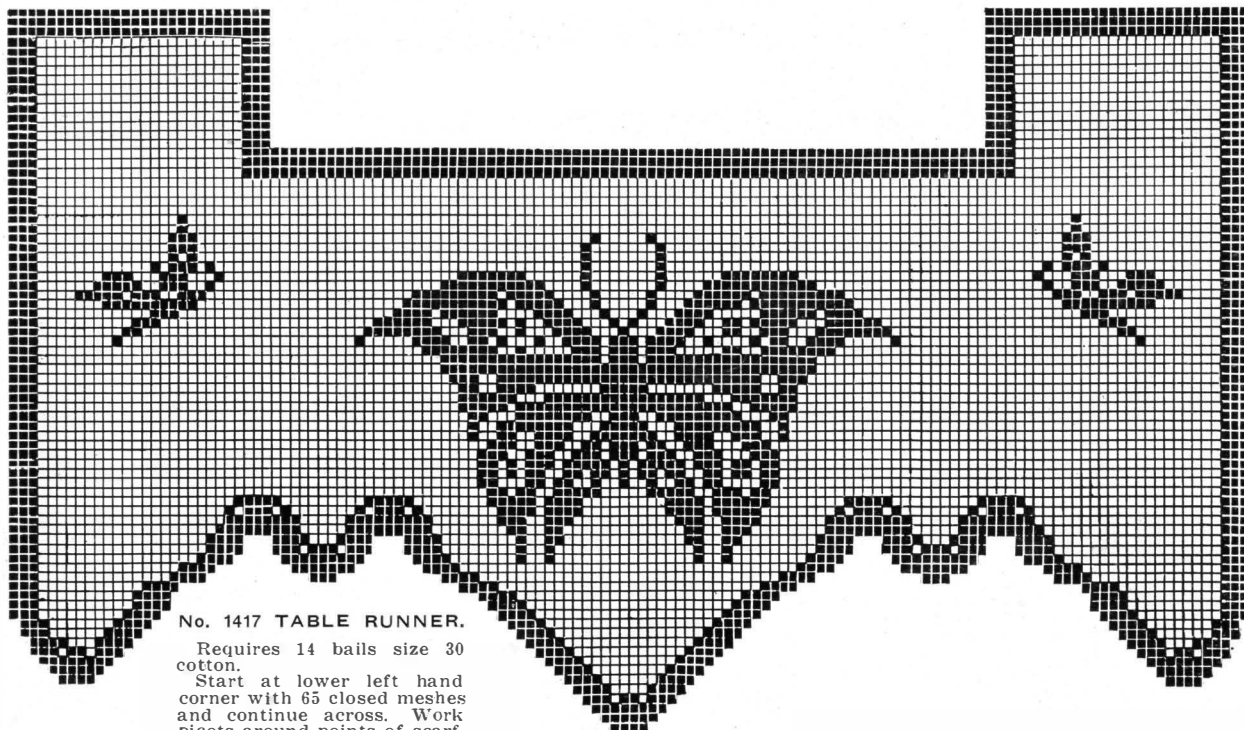
Second Row—Filet around, putting ch. of 5 chs. at corners.

Third Row—Same as second. Make beading same as for leaf medallion.

To Put Together—Lay medallions alternately and catch together at corners with thread and needle. Finish bottom with row of s. c's with picot of 4 sts. over every 6th st. Row of same at top, then row of chains of 6 sts. caught bet. every picot. Over these chains work s. c's. with two picots of 4 sts. in every loop.

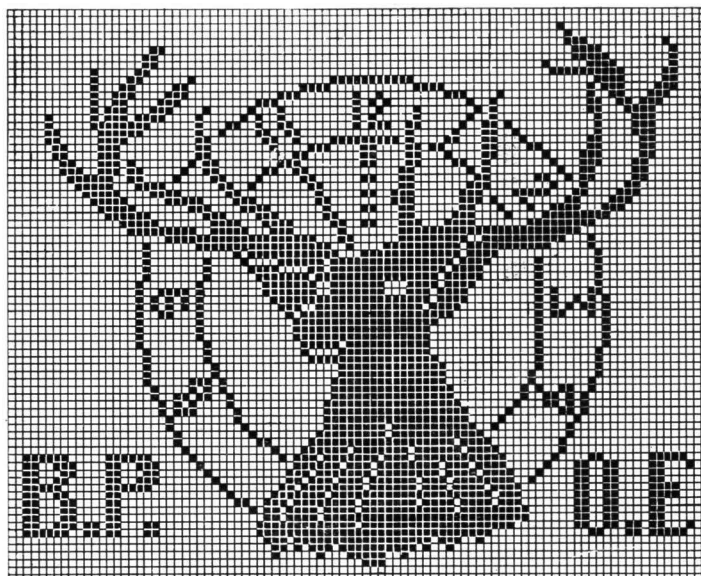
Shoulder Straps—Filet 12 ins., four inches wide, with beading of 3 rows between every ten rows of filet. Finish edges same as bottom.





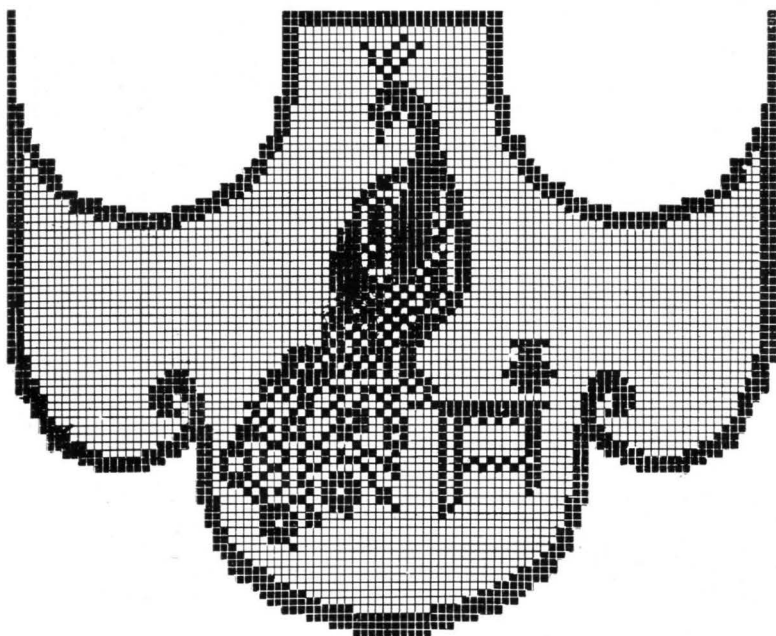
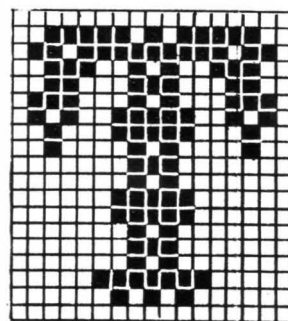
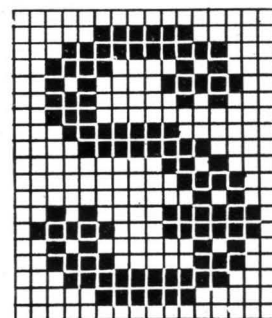
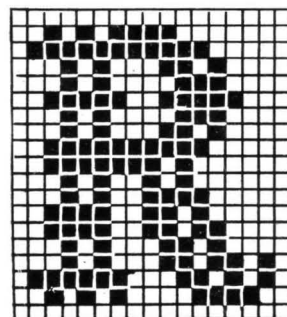
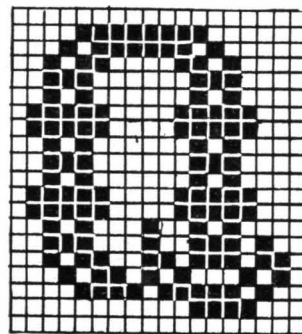
No. 1418 MODERN WOODMEN OF AMERICA PILLOW.

Requires 8 balls size 30 cotton.
Ch. 188 for the 61 o. m. and then follow diagram.



No. 1419 ELK PILLOW.

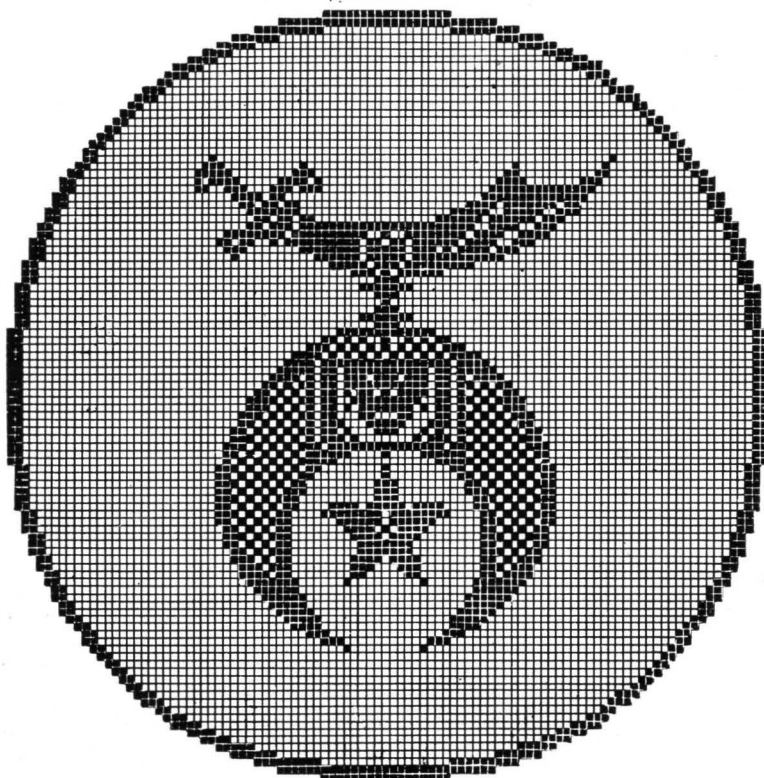
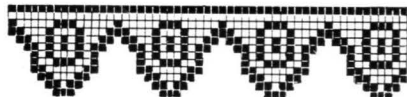
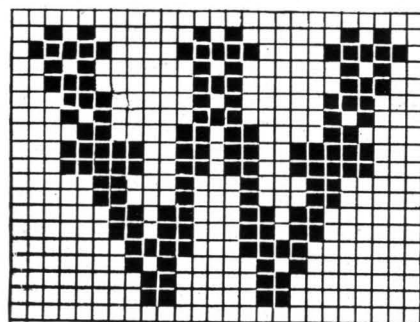
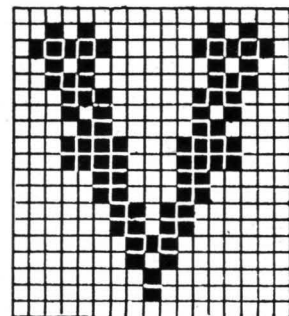
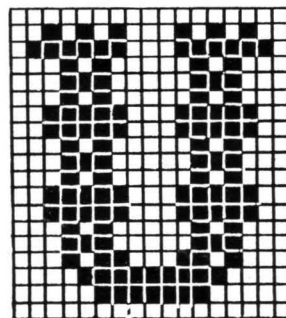
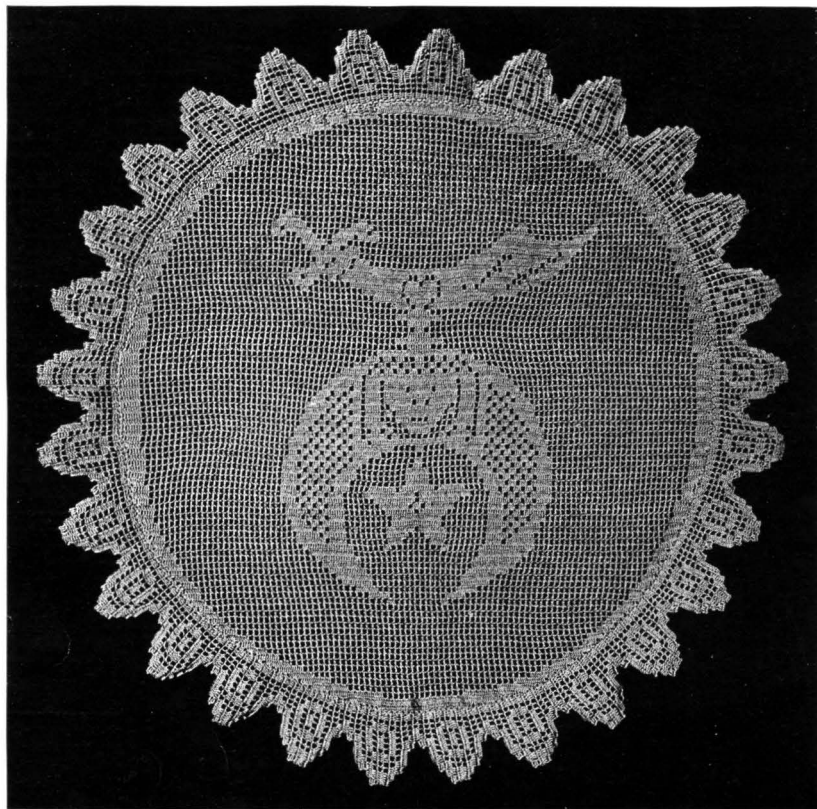
Requires 8 balls size 30 cotton.
Ch. 233 for the 76 o. m. and then follow diagram.



No. 1415 TABLE RUNNER.

Requires 18 balls size 30 cotton.

Start at upper right hand corner of diagram with 45 closed meshes, then follow diagram. Work picots around end of scarf.



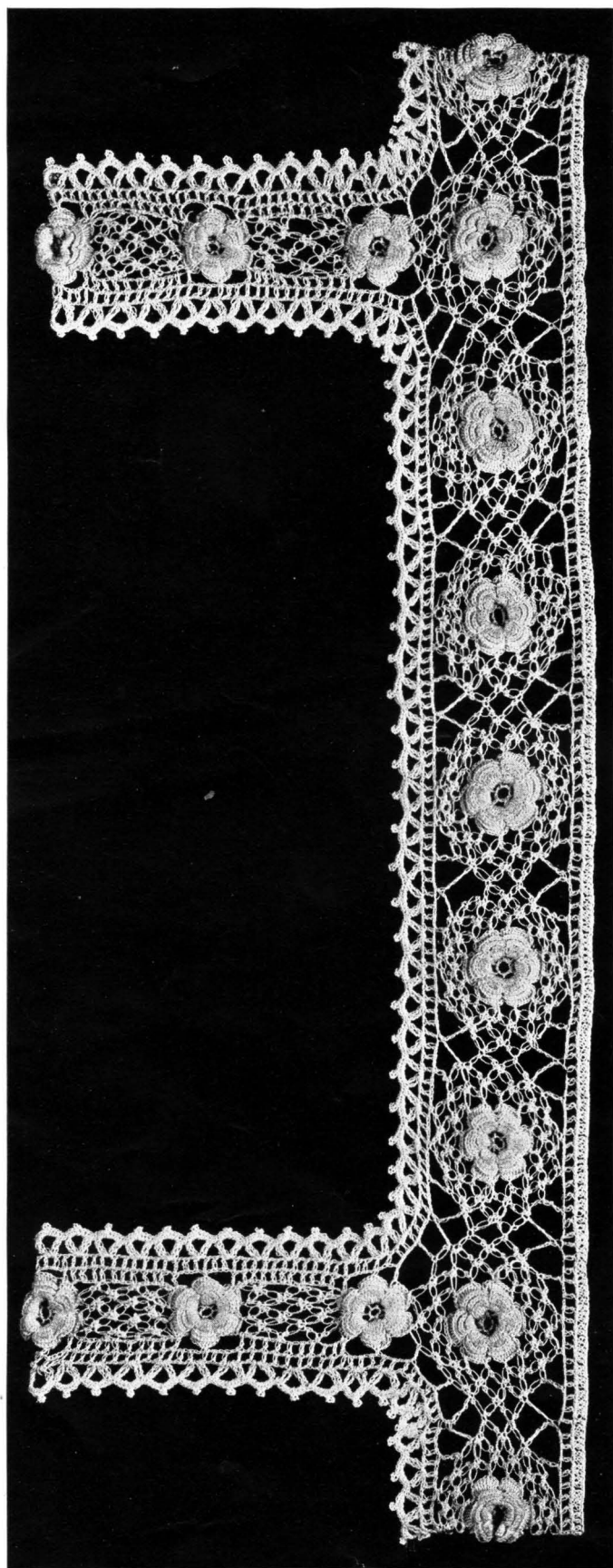
No. 1416 SHRINE PILLOW.

Requires 10 balls size 30 cotton.

Ch. 55 for the 17 closed meshes and then follow diagram.

Edge—ch. 22 and work 2 c. m., 1 o. m., 1 c. m., then follow diagram.

Sew this edge to pillow.



No. 1406 IRISH CROCHET ROSE YOKE.

Requires 4 balls size 50 cotton.

Rose—ch. 7, join in ring, ch. 3, 1 d. c. 6 times, 1 s. c. 5 d. c. 6 times, ch. 4, 1 s. c. under leaf 6 times, 1 s. c. in ch. 6 times, ch. 5, 1 s. c. under leaf 6 times, 1 s. c. 9 d. c. 1 s. c. in ch. 6 times, the 12 knot sts. around rose. For knot st. make 1 very long ch. st., take up center thread, 1 s. c., another long ch. st., fasten in leaf, repeat 12 times and make 3 rows around. For shoulder strap make 4 rows of knot sts. bet. the roses.

Bottom—1st Row—ch. 5, 1 s. c. in knot st., ch. 5, 1 d. t. in knot st., ch. 5, 2 t. L., ch. 5, 1 d. t., ch. 5, 1 s. c. in knot st., repeat.
2nd Row—ch. 1, 1 d. c., ch. 1, 1 d. c.
3rd Row—All d. c.
Neck—1st Row same as 1st row in bottom.
2nd Row—Same as 2nd row in bottom.
3rd Row—2 d. t., ch. 5, 2 d. t. in same m., 2 d. t. in 3 m., ch. 5, 2 d. t., repeat.
4th Row—5 s. c., 1 p., 5 s. c. in ch., repeat.

