

## The Antique Pattern Library

For more information, please see our website at: <http://www.antiquepatternlibrary.org>



This is a scan of an antique book that is, to the best of our knowledge, in the public domain. The scan itself has been photo-edited for readability, and is licensed under the **Creative Commons** Attribution-NonCommercial-ShareAlike License. To view a copy of this license, visit <http://creativecommons.org/licenses/by-nc-sa/2.5/> or send a letter to Creative Commons, 559 Nathan Abbott Way, Stanford, California 94305, USA.

You may share copies or printouts of this scan freely. You may not sell copies or printouts.

Donated by

Eve Wallender

# Crinoline Lady

## in Crochet



10¢



All the charm of rustling petticoats and sweeping skirts . . . romantic reminders of a more leisurely age, to beautify your home.

## Crinoline Cameo PILLOW CASE or PICTURE . . . CL-264

### MATERIALS:

J. & P. Coats or Clark's O.N.T. Best Six Cord Mercerized Crochet, Size 30:

#### SMALL BALL:

J. & P. COATS—3 balls of Beauty Rose (No. 46-B), and 1 ball each of White and Blue (No. 8), or

CLARK'S O.N.T.—5 balls of Beauty Rose (No. 46-B), and 1 ball each of White and Blue (No. 8), or

#### BIG BALL:

J. & P. COATS—2 balls of Beauty Rose (No. 46-B), and 1 ball each of White and Blue (No. 8), or

Clark's Big Ball Three Cord Mercerized Crochet—2 balls of Beauty Rose (No. 46-B), and 1 ball each of White and Blue (No. 8), and

J. & P. Coats Tatting-Crochet, Size 70, 1 ball of Salmon Pink (No. 123).

Steel Crochet Hook No. 10.

A pillow case.

### CRINOLINE LADY—SKIRT . . .

Starting at waist with Beauty Rose, ch 11. **1st row:** Half dc in 3rd ch from hook, half dc in each ch across. Ch 3, turn. **2nd row:** Dc in next half dc, 2 dc in each half dc across. Ch 1, turn. **3rd row:** Sc in each dc across. Ch 4, turn. **4th row:** Picking up back loop only, make tr in next sc, 2 tr in each sc across. Ch 4, turn. **5th row:** Tr in each tr across, increasing 4 tr evenly across row—to inc 1 tr, make 2 tr in 1 tr. Ch 3, turn. **6th row:** Dc in each tr across, increasing 4 dc evenly across. Ch 1, turn. **7th row:** Work as for 3rd row. Ch 4, turn. **8th row:** Picking up back loop only make tr in each sc across, increasing 4 tr evenly across. Ch 4, turn. Repeat 5th to 8th rows incl, increasing 3 sts on each dc row and each tr row until 21 rows in all are made. Break off.

**RUFFLES . . .** Attach thread to front loop of first sc on first sc row. **1st row:** Sc in same place, \* ch 5, sc in front loop of next sc. Repeat from \* across.

Ch 6, turn. **2nd row:** \* Sc in next loop, ch 6. Repeat from \* across. Ch 7, turn. **3rd row:** \* Sc in next loop, ch 7. Repeat from \* across. Break off. **4th row:** Attach White to first loop, sc in same loop, \* ch 5, sc in next loop. Repeat from \* across. Break off. Make a Ruffle in front loops of each sc row (5 Ruffles in all).

**TOP OF FIGURE . . .** Starting at center of Face using 2 strands of Salmon Pink, ch 5. **1st rnd:** In 5th ch from hook make 3 tr, 2 dc, 2 half dc, 2 dc, 5 tr, 2 dc, 2 half dc, 2 dc and tr. Join with sl st to top of starting chain. Now work in rows for Bodice as follows: **1st row:** Sc in next 3 tr (Neck). Ch 1, turn. **2nd row:** Sc in each sc. Ch 3, turn. **3rd row:** 2 dc in next 2 sc, 3 dc in last sc. Ch 4, turn. **4th row:** Dc in 4th ch from hook, dc in each dc across, increasing 2 dc evenly across, ending with 3 dc in turning chain. Break off Salmon Pink. Attach White. Ch 3, turn. **5th row:** Dc in each dc across, increasing 8 dc evenly across, *Continued on page 3*

**CL-264**

**CRINOLINE CAMEO**

dc in turning chain. Turn. **6th row:** Sl st in next 3 dc (base of Arm), ch 3, dc in each dc across to within last 3 dc (base of other arm). Ch 3, turn. **7th and 8th rows:** Dc in each dc across, decreasing 1 dc at both ends of row—to dec 1 dc, work off 2 dc as 1 dc. Ch 3, turn. **9th row:** \* Work off next 2 dc as 1 dc. Repeat from \* across. Break off.

**ARM . . .** Attach Salmon Pink to base of Arm. **1st row:** Ch 3, 2 dc in next st, dc in next st. Ch 3, turn. **2nd to 6th rows incl:** Skip first dc, dc in next 2 dc, dc in turning chain. Ch 3, turn. **7th row:** Holding back on hook the last loop of each dc, make dc in next 2 dc, dc in turning chain, thread over and draw through all loops on hook (cluster made). Ch 3, turn. **8th row:** Make a 4-dc cluster in tip of last cluster. Break off. Work other Arm to correspond.

**RUFFLE . . .** With White ch 19. **1st row:** 2 tr in 5th ch from hook, 3 tr in each ch across. Break off White, attach Beauty Rose. **2nd row:** \* Ch 3, skip next tr, sc in next tr. Repeat from \* across. Break off.

**BONNET . . .** Attach Beauty Rose to 2nd dc on Face following neck. **1st row:** Sc in same place, half dc in next st, dc in next st, 2 dc in next st, 2 tr in next 7 sts, 2 dc in next st, dc in next st, half dc in next st, sc in next st. Turn. **2nd row:** Sl st in next 2 sts, sc in next st, half dc in next st, dc in next 2 sts, 2 dc in next st, 2 tr in next 10 sts, 2 dc in next st, dc in next 2 sts, half dc in next st, sc in next st, sl st in next 2 sts. Break off.

**TIE (Make 2) . . .** With Blue make a chain 2 inches long. Break off.

**BELT . . .** With Blue make a chain to reach across waistline. Break off.

**PARASOL . . .** Starting at bottom with Blue, ch 33. **1st row:** Dc in 4th ch from hook, dc in each ch across. Ch 3, turn. **2nd, 3rd and 4th rows:** Skip first dc, holding back on hook the last loop of each dc, make dc in next 3 dc; thread over and draw through all loops on hook (cluster made), dc in each dc across to within last 3 dc, cluster in last 3 dc, dc in turning chain. Ch 3, turn. **5th row:** Make a 3-dc cluster, dc in each dc to center of row,

ch 5, sl st in 5th ch from hook (parasol tip), dc in next dc and complete row to correspond. Break off.

**RUFFLE . . .** Attach Blue to opposite side of starting chain. **1st row:** Sc in same place, \* ch 5, skip next ch, sc in next ch. Repeat from \* across. Break off Blue, attach White to first loop. **2nd row:** \* Ch 5, sc in next loop. Repeat from \* across. Break off.

**HANDLE . . .** With Blue, ch 26, sl st in each ch across. Break off.

Sew a Tie to each side of Bonnet, tie into a bow. Sew Bodice to Skirt. Sew Belt and Ruffle in place. Sew Handle to Parasol. Sew Parasol in place. Starch Crinoline Lady and sew to pillow case.

**EDGING . . . 1st row:** Attach Beauty Rose to pillow case following Crinoline Lady, make sc closely across. Ch 7, turn. **2nd row:** \* Skip 1 sc, sc in next sc, ch 7. Repeat from \* across. Ch 7, turn. **3rd row:** \* Sc in next loop, ch 7. Repeat from \* across. Break off. **4th row:** Attach White to first loop, sc in same loop, \* ch 5, sc in next loop. Repeat from \* across. Break off.

Top: CL-263—Directions on page 10

Bottom: CL-264—Directions on page 2



# Garden Walk CHAIR SET and RUNNER

- CL-259-A**—Runner . . . . . 13¾ x 32 inches
- CL-259-B**—Chair Back . . . 12¼ x 13¾ inches
- Arm Piece . . . 8 x 11 inches each

**MATERIALS for RUNNER:**

J. & P. Coats or Clark's O.N.T. Best Six Cord Mercerized Crochet, Size 30:

**SMALL BALL:**

J. & P. COATS—9 balls of White or Ecu, or 11 balls of any color, or

CLARK'S O.N.T.—14 balls of White or Ecu, or 17 balls of any color, or

**BIG BALL:**

J. & P. COATS—5 balls of White, Ecu or Cream, or 6 balls of any color, or

Clark's Big Ball Mercerized Crochet (Three Cord), Size 30, 4 balls of White, Ecu or Cream, or 5 balls of any color.

Steel Crochet Hook No. 10.

**MATERIALS for CHAIR SET:**

J. & P. Coats or Clark's O.N.T. Best Six Cord Mercerized Crochet, Size 30:

**SMALL BALL:**

J. & P. COATS—7 balls of White or Ecu, or 9 balls of any color, or

CLARK'S O.N.T.—10 balls of White or Ecu, or 13 balls of any color, or

**BIG BALL:**

J. & P. COATS—4 balls of White, Ecu or Cream, or 5 balls of any color, or

Clark's Big Ball Three Cord Mercerized Crochet—3 balls of White, Ecu or Cream, or 4 balls of any color.

Steel Crochet Hook No. 10.

**GAUGE:** 5 sps make 1 inch; 5 rows make 1 inch.

**RUNNER . . .** Starting at A on chart, ch 143 (15 ch sts to 1 inch). **1st row:** Dc in 8th ch from hook (sp made), (ch 2, skip 2 ch, dc in next ch) 17 times (17 more sps made); dc in next 6 ch (2 bls); (make 2 sps, 2 bls) twice; 18 sps. Ch 10, turn. **2nd row:** Dc in 8th ch from hook, ch 2, dc in next dc (2 sps increased at beginning of row), ch 2, dc in next dc (sp made over sp), make 10 more sps; 2 dc in next sp, dc in next dc (bl made over sp); (make 2 sps, 2 bls) 4 times; 2 sps, 1 bl, 15 sps, ch 5, dc in same place as last dc, ch 5, turn; skip 2 ch, dc in next ch (2 sps increased at end of row). Ch 10, turn. **3rd row:** Inc 2 sps at beginning of row, follow chart across, inc 2 sps at end of row. Ch 5, turn. **4th row:** Skip first dc, dc in next dc, then follow chart across. Ch 8, turn. **5th row:** Dc in first dc (1 sp increased), follow chart across, ch 5, dc in same place as last dc, turn, sl st in next 3 ch. Ch 5, turn. **6th row:** Follow chart across. Turn. **7th row:** Sl st in next 2 ch and in next dc, ch 5 (1 sp decreased at beginning of row), follow chart across to within last sp  
*Continued on page 5*





(1 sp decreased at end of row). Turn. **8th row:** Dec 2 sps at beginning and end of row. Ch 22, turn. **9th row:** Dc in 8th ch from hook, (ch 2, skip 2 ch, dc in next ch) 4 times; ch 2, dc in next dc (6 sps increased at beginning of row), follow chart across, then ch 5, dc in same place as last dc, (ch 5, turn, skip 2 ch, dc in next ch) 5 times (6 sps increased at end of row). Ch 8, turn.

Starting with 10th row follow chart to top, then reverse chart and, omitting center row, follow chart back to first row. Break off.

**EDGING . . .** Attach thread to any sp and sc closely around. Join and break off.

**CHAIR BACK . . .** Work exactly as for Runner No. CL-259-A until 70 rows are completed. Finish to correspond with Runner.

**ARM PIECE (Make 2) . . .** Starting at A on chart for Arm Piece, ch 113. Follow chart to top. Complete as for Chair Back.

CHART for CHAIR BACK and RUNNER

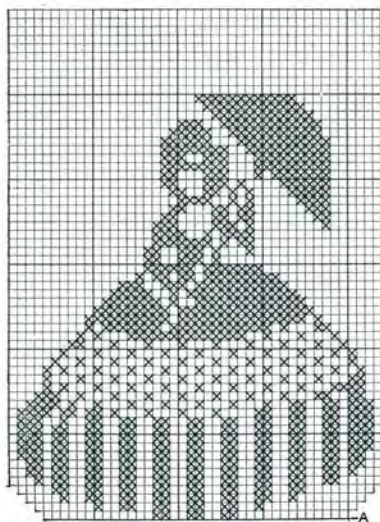
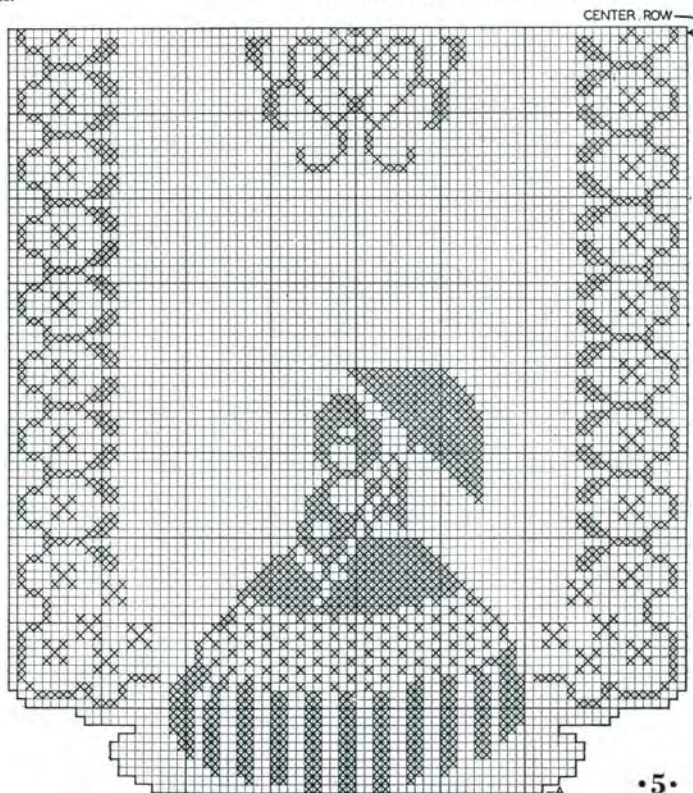


CHART for ARM PIECE



# Crinoline Ladies

## Guest Towel . . . CL-272

### MATERIALS:

J. & P. Coats Tatting-Crochet, Size 70,  
1 ball each of White and Shaded  
Light Yellows (No. 181).

Steel Crochet Hook No. 14.

Guest towel.

### SKIRT—FIRST ROW OF MOTIFS

**FIRST MOTIF . . .** Starting at center with White, ch 6. Join with sl st to form ring. **1st rnd:** Ch 7, (3 tr in ring, ch 3) 5 times; 2 tr in ring. Join to 4th ch of ch-7. Break off.

### SECOND MOTIF . . .

Ch 6, join. **1st rnd:** Ch 7, 3 tr in ring, ch 1, sl st in any free loop of First Motif, ch 1, (3 tr in ring, ch 3) 4 times; 2 tr in ring. Join and break off.

Make 2 more motifs, joining to previous motif as Second Motif was joined to First Motif, having 2 free loops on each side of joining.

### SECOND ROW OF MOTIFS—

#### FIRST MOTIF . . .

Ch 6. Join. **1st rnd:** Ch 7, 3 tr in ring, ch 1, sl st to first free sp next to joining on First Motif of First Row, ch 1, 3 tr in motif of Second Row, ch 1, join to next free sp following same joining (of First Row). Complete motif as before.

#### SECOND MOTIF . . .

Ch 6, join. **1st rnd:** Ch 7, 3 tr in ring, ch 1, sl st in side sp of First Motif, ch 1, 3 tr in motif of Second Row. Then join next 2 sps as for First Motif and complete rnd. Make another motif, joining as Second Motif was joined to First Motif.

### THIRD ROW OF MOTIFS . . .

Make 2 motifs as before, joining Third Row as Second was joined to First. Do not break off after last motif but work as follows: **1st rnd:** Sc in next sp, ch 3, d tr in joining between motifs, ch 3, sc in next free sp on next motif, (ch 3, sc in next free sp) twice; ch 3, d tr in joining of motifs (between 2nd and 3rd rows). Continue in this manner all around skirt, making ch 4 (instead of ch-3) along lower edge only. Join with sl st. **2nd rnd:** \* 3 sc in sp, sc in next st. Repeat from \* along side edge to lower edge, then work along lower edge as follows: \* Make 5 dc in sp, sc in next st. Repeat from \* across. Work remaining side to correspond. Join.

**BODY . . . 1st row:** Sc across next 8 sc. Ch 1, turn. **2nd to 5th rows incl:** Sc in each sc across. Ch 1, turn. **6th row:** Sc in each sc across, increasing 4 sc evenly apart—to inc 1 sc, make 2 sc in 1 sc. Ch 3, turn. **7th row:** Skip first sc, \* holding back on hook the last loop of each dc, make dc in next 3 sc, thread over and draw through all loops on hook (2 dc decreased). Repeat from \* across, dc in last 2 sc. Ch 6, turn.

**SHOULDER CAPE . . .** Picking up back loop only, skip first st, \* dc in next st, ch 3. Repeat from \* across, ending with dc in last st. Ch 1, turn. **Last row:** (Sc in next dc, 4 dc in next sp) 4 times; sc in last dc. Break off.

**ARM . . .** Ch 4. **1st row:** Sc in 2nd ch from hook and in each ch across. Ch 1, turn. **2nd to 6th rows incl:** Sc in each sc across. Ch 1, turn. **7th row:** Sc in next sc, work off next 2 sc as 1 sc (1 sc decreased). Ch 1, turn. **8th to 12th rows incl:** Sc in each of next 2 sts. Ch 1, turn. Break off at end of 12th row. Sew in place.

**HAT . . .** Ch 9. **1st row:** Dc in 4th ch from hook and in each ch across. Ch 3, turn. **2nd row:** Skip first dc, dc in each dc across, ending with dc in top of turning chain (7 dc). Ch 3, turn. **3rd row:** Skip first dc, dc in each dc, increasing 3 dc evenly apart. Ch 3, turn. **4th row:** Skip first dc, dc in each dc, increasing 4 dc evenly apart. Ch 1, turn.

**EDGING . . .** (Sc in next dc, dc in next 3 dc) 3 times; sc in last dc. Break off. Sew Hat in place.

Make another Crinoline Lady with Yellow. Sew to towel and draw contrasting colors through beading on each cape.

## Bath Towel ~ Face Cloth CL-271

### MATERIALS:

**Bath Towel—**J. & P. Coats or Clark's O.N.T. Pearl Cotton, Size 5, 3 balls of Hunter's Green (No. 48), 2 balls of Nile Green (No. 26), 1 ball each of Beauty Rose (No. 46-B) and Mid Pink (No. 4-A) . . . Steel Crochet Hook No. 6.

**Face Cloth—**J. & P. Coats Tatting-Crochet, Size 70, 1 ball each of Bright Nile Green (No. 26-B), Hunter's Green (No. 48), Pink (No. 4) and Shaded Bright Reds (No. 15-B) . . . Steel Crochet Hook No. 14.

### CRINOLINE LADY—BODY . . .

Starting at center with Hunter's Green, ch 4. **1st rnd:** 10 dc in 4th ch from

hook. Join with sl st to top of starting chain. **2nd rnd:** Ch 3, dc in same place as sl st, 2 dc in each dc around. Join. **3rd rnd:** Sc in same place as sl st, sc in each dc around. Join and break off.

### SKIRT . . .

Starting at waist with Hunter's Green, ch 15. **1st row:** Dc in 4th ch from hook, 2 dc in each ch across. Ch 3, turn. **2nd row:** Dc in first dc, \* dc in next dc, 2 dc in next dc. Repeat from \* across, ending with dc in top of turning chain. Ch 3, turn. **3rd and 4th rows:** Skip first dc, dc in each dc across. Ch 3, turn. **5th row:** Skip first dc, \* picking up back loop only, make sc in next dc, ch 3. Repeat from \* across, ending with sc. Break off. **6th row:** Attach Rose to first loop, sc in same loop, \* ch 4, sc in next loop. Repeat from \* across. Break off. **7th row:** Attach Nile Green to front loop of first dc on 4th row, ch 3, dc in front loop of each dc across (36 dc). Ch 3, turn. **8th row:** Skip first dc, dc in next dc, \* ch 3, skip 1 dc, dc in next 2 dc. Repeat from \* across, ending with 2 dc. Ch 3, turn. **9th to 14th rows incl:** Skip first dc, dc in next dc, \* ch 3, dc in next 2 dc. Repeat from \* across. Ch 3, turn. At end of 14th row, ch 1 to turn. **15th row:** \* Sc in next 2 dc, 3 sc in next sp. Repeat from \* across, ending with sc in last dc and in top of turning chain. Break off. **16th row:** Attach Hunter's Green to first sc, sc in same sc, \* ch 4, sc in next sc. Repeat from \* across. Break off.

**WAISTBAND . . .** Attach Hunter's Green to opposite side of starting chain, ch 3, dc in each ch across. Break off. Sew Skirt to Body.

### COLLAR . . .

Starting at neck edge with Rose, ch 10. **1st row:** Dc in 4th ch from hook and in each ch across. Ch 4, turn. **2nd row:** Sc in first dc, \* ch 4, sc in next dc. Repeat from \* across, ending with sc in top of starting chain. Break off. Sew Collar to Body.

### HAT . . .

Starting at back with Nile Green, ch 9. **1st row:** Dc in 4th ch from hook, dc in each ch across. Ch 3, turn. **2nd row:** Skip first dc, dc in each dc across, ending with dc in top of turning chain. Ch 4, turn. **3rd row:** Skip first dc, \* dc in next dc, ch 1. Repeat from \* across, ending with dc in top of turning chain. Ch 3, turn. **4th row:** Dc in first dc, \* dc in next sp, 2 dc in next dc. Repeat from \* across, ending with 2 dc in 3rd ch of ch-4. Ch 3, turn. **5th row:** Skip first dc, dc in each dc across. Break off. Sew Hat in place.

### ARM . . .

With Mid Pink, ch 4. **1st row:** Sc in 2nd ch from hook, sc in next 2 ch. Ch 1, turn. **2nd row:** Sc in

*Continued on page 8*

# for all your towels

## Guest Towel . . . CL-273

### MATERIALS:

J. & P. Coats or Clark's O.N.T. Best Six Cord Mercerized Crochet, Size 30, (Small Ball), 1 ball each of Blue (No. 8) and Yellow (No. 9), and J. & P. Coats Tatting-Crochet, Size 70, 1 ball each of Salmon Pink (No. 123) and White (No. 1) . . . Steel Crochet Hook No. 10.

Guest towel.

### CRINOLINE LADY—BODY . . .

Starting at waist with Blue, ch 12. **1st row:** Dc in 6th ch from hook, \* ch 1, skip 1 ch, dc in next ch. Repeat from \* across. Ch 1, turn. **2nd row:** Sc in first dc, \* sc in next sp, sc in next dc. Repeat from \* across, ending with sc in last sp, sc in next ch. Ch 1, turn. **3rd to 6th rows incl:** Sc in each sc across. Ch 1, turn. Break off at end of 6th row.

**SKIRT . . . 1st row:** Attach Blue to opposite side of starting chain, ch 3, *Continued on page 12*

CL-271



CL-273

CL-272







# Minuet LUNCHEON SET...CL-260

Centerpiece—12½ x 24 inches  
 Place Mat—12 x 17½ inches each  
 Napkin—12 x 12 inches each

## MATERIALS:

J. & P. Coats or Clark's O.N.T. Best Six Cord Mercerized Crochet, Size 30:

### SMALL BALL:

J. & P. COATS—8 balls of Bright Nile Green (No. 26-B), 3 balls of Beauty Pink (No. 65), and 2 balls of White, or

CLARK'S O.N.T.—13 balls of Bright Nile Green (No. 26-B), 5 balls of Beauty Pink (No. 65), and 4 balls of White, and

J. & P. Coats Tatting-Crochet, Size 70, 4 balls of Salmon Pink (No. 123).

1½ yards of green linen.

Steel Crochet Hook No. 10.

## CENTERPIECE—CRINOLINE LADY (Make 4)—SKIRT . . .

Starting at top with Green, ch 7. **1st row:** Dc in 4th ch from hook, 2 dc in each ch across. Ch 3, turn. **2nd row:** Dc in first dc, 2 dc in each dc across, 2 dc in top of turning chain. Ch 3, turn. **3rd row:** Picking up front loop only, dc in first dc, \* dc in next dc, 2 dc in next dc (1 dc increased). Repeat from \* across, ending with dc in top of turning chain. Ch 3, turn. (This is right side of work.) **4th row:** Repeat 3rd row, picking up both loops of each dc. **5th to 8th rows incl:** Skip first dc, dc in each dc across, ending with dc in top of turning chain. Ch 3, turn. **9th row:** Dc in first dc, \* dc in next 8 dc, 2 dc in next dc. Repeat from \* across, ending with dc in top of starting chain. Ch 3, turn (40 dc). **10th row:** Skip first dc, dc in each dc across. Ch 3, turn. **11th row:** Skip first dc, dc in front loop of each dc across. Ch 3, turn. **12th row:** Repeat 10th row. Break off.

**FACE . . .** Starting at center with 2 strands of Salmon Pink Tatting-Crochet, ch 2. **1st rnd:** In 2nd ch from hook make 2 sc, half dc, dc, 3 tr, dc, half dc and 2 sc. Join. Ch 1, turn.

## NECK AND SHOULDERS . . .

**1st row:** Sc in same place as sl st, sc in next sc. Ch 1, turn. **2nd row:** 3 sc in each sc. Ch 1, turn. **3rd row:** Sc in each sc across. Ch 1, turn. **4th row:** 2 sc in each sc across. Ch 1, turn.

**ARM . . . 1st row:** Sc in back loop of next 2 sc. Ch 1, turn. **2nd row:** Sc in next 2 sc. Ch 1, turn. Repeat 2nd row until Arm measures 1¼ inches. Break off. Attach thread to opposite side of shoulder and work other arm to correspond.

**BODY . . . 1st row:** Attach White to back loop of next free sc on shoulder (between arms), ch 3, picking up back loop only \* make 2 dc in next sc, dc in next sc. Repeat from \* across. Ch 3, turn. **2nd row:** Skip first dc, \* dec 1 dc, dc in next dc—to dec 1 dc, work off 2 dc as 1 dc. Repeat from \* across. Ch 3, turn. **3rd row:** Skip first dc, dc in each dc across. Break off.

**FIRST RUFFLE . . . 1st row:** Holding top of skirt and bottom of waist together (wrong side facing), and working through both thicknesses to join, attach Beauty Pink, and make sc closely across. Ch 3, turn. **2nd row:** \* Sc in next sc, ch 3. Repeat from \* across, ending with sc. Ch 3, turn. **3rd row:** \* In next loop make sc, ch 3 and sc, ch 1. Repeat from \* across. Break off. **4th row:** Attach Bright Nile Green to first loop, sc in same loop, \* ch 4, sc in next loop. Repeat from \* across. Break off.

**SECOND RUFFLE . . .** Attach White to back loop of first dc on 2nd row of Skirt, sc in same place, sc closely across. Ch 3, turn. **2nd row:** Repeat 2nd row of First Ruffle. **3rd row:** \* In next loop make sc, ch 3 and sc, ch 2. Repeat from \* across. Break off. **4th row:** Repeat 4th row of First Ruffle.

**BOTTOM RUFFLE . . . 1st row:** Attach Beauty Pink to back loop of first dc on 10th row of Skirt, sc in same place, sc closely across. Ch 3, turn. **2nd row:** Repeat 2nd row of First Ruffle. **3rd row:** \* In next loop make sc, ch 3 and sc, ch 3. Repeat from \* across. Break off. **4th row:** Repeat 4th row of First Ruffle.

**NECK RUFFLE . . . 1st row:** Attach White to front loop of first sc on last row of shoulder, sc in same place, 2 sc in each sc across, ending with 1 sc in last sc. Ch 3, turn. **2nd row:** \* Skip 1 sc, sc in next sc, ch 3. Repeat from \* across. Break off. **3rd row:** Repeat 4th row of First Ruffle.

**HAT . . .** Attach Green to first free sc on head, sc in same place, sc in next st, half dc in next st, 2 dc in next st, 2 tr in each of next 3 sts, 2 dc in next st, half dc in next st, sc in next 2 sts. Break off.

Cut a piece of linen 12½ x 24

inches. Make a narrow hem all around. Sew a Crinoline Lady to each corner.

**EDGING . . . 1st rnd:** Attach Beauty Pink to one side, sc closely across to next Crinoline Lady. Break off. Attach thread to next side and sc closely across to next Crinoline Lady. Complete other 2 sides to correspond. **2nd rnd:** Attach Beauty Pink to first sc, sc in same place, \* ch 3, sc in next sc. Repeat from \* across side. Break off. Work other sides to correspond. **3rd rnd:** Attach Green to first loop, sc in same loop, \* ch 4, sc in next loop. Repeat from \* across to next Crinoline Lady. Break off. Complete other sides to correspond. Sew ends of edging to Crinoline Ladies.

**PLACE MAT (Make 4) . . .** Cut a piece of linen 12 x 17½ inches. Make a narrow hem all around. Make 4 Crinoline Ladies for each Place Mat. Complete as for Centerpiece.

**NAPKIN (Make 4) . . .** Cut a piece of linen 12 inches square, and make a narrow hem all around. Make one Crinoline Lady for each Napkin. Sew in place at one corner.

**EDGING . . . 1st rnd:** Attach Pink to side following Crinoline Lady, sc closely around, making 3 sc in each corner. Break off. Complete as for Centerpiece. Starch lightly and press.

## Bath Towel ~ Face Cloth

CL-271 Continued from page 6

each sc across. Ch 1, turn. Repeat 2nd row until 11 rows are completed. Break off. Sew Arm to Body.

**ROSE (Make 2) . . .** Starting at center with Rose, ch 4. Join with sl st to form ring. **1st rnd:** (Make sc, 2 dc in ring) 4 times. Join and break off. Sew one Rose to Hat and one to end of Arm.

With Rose make a chain 2 inches long. Lace chain through sps on Hat and sew in place. Make another chain 6 inches long. Tie into bow and sew to Hat. Make a chain 3 inches long and lace through Waistband of Skirt. Sew in place. Make another chain 8 inches long and form a rosette of loops. Sew to Waist.

Make another Crinoline Lady the same way. Sew to Towel as illustrated.

**FACE CLOTH . . .** Using Tatting-Crochet, and No. 14 Hook, make one Crinoline Lady exactly as for Towel. Sew to corner of Face cloth.



# Shepherdess

## PILLOW CASE

CL-263 . . . . . Illustrated on page 3



### MATERIALS:

J. & P. Coats Tatting-Crochet, Size 70, 2 balls each of Shaded Turquoise (No. 13-C), Shaded Yellows (No. 19), Spanish Red (No. 126), and Salmon Pink (No. 123) . . . Steel Crochet Hook No. 14.

A pillow case.

**HEAD . . .** Starting at center with Salmon Pink, ch 2. **1st rnd:** In 2nd ch from hook make 2 sc, half dc, dc, 4 tr, dc, half dc and 2 sc. Join to first sc. **2nd rnd:** Ch 3, dc in first sc, make 2 dc in each st around. Join. **3rd rnd:** Ch 3, dc in same place as sl st, 2 dc in each of next 15 dc, half dc and sc in next dc, sc in next 5 dc, sc and half dc in next dc, 2 dc in next dc. Join. (Sc's form front of head.)

### NECK AND SHOULDERS . . . .

**1st row:** Ch 3, dc in next 4 dc, 3 dc in next dc. Ch 3, turn. **2nd row:** 2 dc in first dc, 2 dc in next dc, dc in each dc across, 2 dc in top of turning chain. Ch 3, turn. **3rd row:** Dc in first dc, dc in each dc across to within last dc, 2 dc in last dc, 3 dc in top of turning chain. Ch 3, turn. **4th row:** 2 dc in first dc, 2 dc in next dc, dc in each dc across to within last dc, 2 dc in next dc, 2 dc in top of turning chain. Ch 3, turn. **5th row:** Skip first dc, dc in each dc across, increasing 5 dc evenly across—to inc 1 dc, make 2 dc in 1 dc. Ch 3, turn. **6th row:** Dc in first dc, dc in next 15 dc, half dc in next dc, sc in each remaining dc across. Ch 1, turn. **7th row:** Sc in next 6 sts, 2 dc in next st, 2 tr in next st, 5 tr in next st, 2 tr in next st, dc in next st, half dc in next st, sc in each remaining st across. Break off.

**BODICE . . . 1st row:** Attach Turquoise, ch 4, picking up front loop only, make tr in each st to center tr of 5-tr group, 5 tr in center tr, tr in each remaining st across. Ch 4, turn. **2nd row:** Dec 1 tr—to dec 1 tr, work off 2 tr as 1 tr—tr in each tr across to center tr of 5-tr group, 5 tr in center tr, tr in each tr across to within last 8 tr. Ch 4, turn. Remaining sts are base for Arm. **3rd row:** Skip first tr, holding back on hook the last loop of each tr, make tr in next 4 tr, thread over and draw through all loops on hook (cluster made), tr in each tr across to center tr of 5-tr group, make 5 tr in next tr, tr in each tr across to within last 5 tr, make a cluster over next 5 tr. Ch 4, turn. **4th row:** Skip first cluster, cluster over next 4 tr, tr in each tr across, making 5 tr in center tr of 5-tr group to within last 8 tr,

cluster over next 5 tr. Ch 4, turn. **5th row:** Skip first cluster, make a cluster over next 2 tr, tr in each tr across, making 5 tr in center tr of 5-tr group, to within last 4 tr, cluster over last 4 tr. Ch 4, turn. **6th row:** Skip next cluster, make a cluster over next 2 tr, tr in each tr across making 5 tr in center tr of 5-tr group. Ch 1, turn. **7th row:** Sc in each tr across to within last 3 tr, ch 4, cluster over last 3 tr. Ch 1, turn. **8th row:** 3 sc over ch 4, sc in each sc across. Break off.

### SHOULDER RUFFLE . . . 1st row:

Attach Turquoise to back loop of last row of shoulder, sc in each st across. Ch 3, turn. **2nd row:** \* Sc in next sc, ch 3. Repeat from \* across, ending with sc. Ch 4, turn. **3rd row:** \* Sc in next loop, ch 4. Repeat from \* across, ending with sc in last loop. Ch 5, turn. **4th row:** \* Sc in next loop, ch 5. Repeat from \* across. Break off.

### ARM . . . 1st rnd:

Attach Salmon Pink to free sts on Bodice, ch 3, dc in back loop of each st across, dc in front loop of same group of sts. Join to top of ch-3. **2nd rnd:** Ch 3, dc in each dc around, decreasing 3 dc evenly around. Join. **3rd to 8th rnds incl:** Ch 3, dc in each dc around. Join. **9th to 15th rnds incl:** Ch 3, dc in each dc around, decreasing 1 dc evenly on each rnd. Join. Break off at end of 15th rnd.

### SKIRT—CENTER PANNIER . . .

With Turquoise, ch 45. **1st row:** Tr in 5th ch from hook, tr in each ch across, 9 tr in last ch; now, working along opposite side of starting chain make tr in each ch across. Ch 1, turn. **2nd row:** Sc in next 10 tr, half dc in next 5 tr, dc in next 5 tr, tr in next 10 tr, 2 tr in each of next 9 tr, tr in next 10 tr, dc in next 5 tr, half dc in next 5 tr, sc in next 10 tr. Ch 1, turn. **3rd row:** Sc in next 5 sc, half dc in next 5 sc, dc in next 5 half dc, tr in each dc and each tr across, increasing 10 tr evenly around bottom, dc in next 5 half dc, half dc in next 5 sc, sc in next 5 sc. Ch 1, turn. **4th row:** Sc in each st across, increasing around curved end where necessary to keep work flat. Break off. Turn. **5th row:** Attach Red to first sc, ch 4, tr in back loop of each sc around, increasing where necessary around end. Break off.

### RUFFLE . . . 1st row:

Attach Yellow to first tr, picking up front loop only, make sc closely across. Ch 3, turn. **2nd row:** \* Sc in next sc, ch 3. Repeat from \* across, ending with sc. Ch 4,

turn. **3rd row:** \* Sc in next loop, ch 4. Repeat from \* across, ending with sc. Break off.

### SIDE PANNIER (Make 2) . . . .

Work as for Center Pannier until 2 rows are completed. **3rd and 4th rows:** Repeat 4th and 5th rows of Center Pannier.

### RUFFLE . . .

Attach Yellow to first st, work as for Ruffle of Center Pannier to within last 25 sts of row. Ch 3, turn. Complete Ruffle as before.

### BOTTOM OF SKIRT . . .

Starting at top with Red, ch 119. **1st row:** Tr in 5th ch from hook, \* tr in next 2 ch, 2 tr in next ch. Repeat from \* across. Ch 4, turn. **2nd row:** Skip first tr, tr in each tr across, tr in top of turning chain. Ch 4, turn. **3rd row:** Skip first tr, tr in each tr across, increasing 1 tr in every 5th tr across. Ch 4, turn. Repeat 2nd row until 14 rows in all are completed. (Do not ch 4 to turn at end of 14th row.) **15th row:** Sl st in each tr across. Break off.

### LOWER DRAPE . . .

With Turquoise, make a chain 9 inches long. **1st row:** Tr in 5th ch from hook and in each ch across until row measures 7 inches. Cut off remaining chain. Ch 4, turn. **2nd and 3rd rows:** Skip first tr, tr in each tr across, ending with tr in top of turning chain. Ch 4, turn. Break off at end of 3rd row.

### FLOWER (Make 4) . . .

Starting at center with Yellow, ch 2. **1st rnd:** 10 sc in 2nd ch from hook. Join. **2nd rnd:** \* Ch 5, holding back on hook the last loop of each d tr make 3 d tr in next sc, thread over and draw through all loops on hook (cluster made), ch 5, sc in next sc. Repeat from \* around. Join and break off.

### HAT . . .

Starting at top with Yellow, ch 12. **1st row:** Dc in 4th ch from hook, dc in each ch across. Ch 3, turn. **2nd row:** Dc in first dc, 2 dc in each dc across. Ch 3, turn. **3rd row:** Dc in first dc, \* dc in next dc, 2 dc in next dc. Repeat from \* across. Ch 1, turn. **4th row:** Sc in each dc across. Ch 3, turn. **5th row:** \* Sc in next sc, ch 3. Repeat from \* across. Ch 3, turn. **6th row:** \* Sc in next loop, ch 4. Repeat from \* across, ending with sc. Break off.

Sew Hat to Head, folding straight side under to form brim at sides. Fold Arm as illustrated. Sew Flower in place. Sew Center and Side Panniers together as illustrated. Sew Bottom of Skirt in place. Sew Lower Drape to Skirt. Sew flowers to drape, gathering drape in back of each flower. Starch Crinoline Lady and sew to pillow case.

### EDGING . . . 1st row:

Attach Yellow to pillow case, following Crinoline Lady, sc closely around. Ch 3, turn. **2nd row:** \* Sc in next sc, ch 3. Repeat from \* across, ending with sc. Ch 4, turn. **3rd row:** \* Sc in next loop, ch 4. Repeat from \* across, ending with sc. Break off.

# Lady Fair DOILY . . . . . 11½ x 14 inches . . . . . CL-266

**MATERIALS:**

J. & P. Coats or Clark's O.N.T. Best Six Cord Mercerized Crochet, Size 30:

**BIG BALL:**

J. & P. COATS—1 ball each of White, Blue (No. 8), Mid Pink (No. 4-A), and Beauty Pink (No. 65), and

Clark's Big Ball Three Cord Mercerized Crochet, Size 30, 1 ball of Salmon Pink (No. 123), or

J. & P. Coats or Clark's O.N.T. Best Six Cord Mercerized Crochet, Size 30:

**SMALL BALL:**

J. & P. COATS—1 ball each of White and Beauty Pink (No. 65); 2 balls each of Blue (No. 8), and Shaded Pinks (No. 15), or

CLARK'S O.N.T.—1 ball each of White and Beauty Pink (No. 65); 2 balls each of Blue (No. 8) and Mid Pink (No. 4-A), and

J. & P. Coats Tatting-Crochet, Size 70, 2 balls of Salmon Pink (No. 123).

Use Tatting-Crochet double — one thread from each ball.

Steel Crochet Hook No. 10.

Starting at center with Mid Pink (or Shaded Pinks), ch 46 to measure 2¾ inches. **1st rnd:** 7 dc in 4th ch from hook, \* ch 1, skip next ch, dc in next ch. Repeat from \* across, making 8 dc in last ch; then, working along opposite side of starting chain, make ch 1, skip next ch, dc in next ch and continue in this manner across, ending

with ch 1. Join with sl st. **2nd rnd:** Ch 4, (dc between next and following dc, ch 1) 6 times; \* dc in next ch-1 sp, ch 1. Repeat from \* around, working over next 8-dc group to correspond. Join with sl st to 3rd ch of ch-4. **3rd rnd:** Sl st in next sp, ch 4, dc in same sp, ch 1, \* in next sp make (dc, ch 1) twice (inc made). Repeat from \* 4 more times; dc in next sp, ch 1 and continue to work in pattern around, increasing 6 sps evenly around other end of oval. Join as before. **4th rnd:** Sl st in next sp, ch 4, \* dc in next sp, ch 1. Repeat from \* around. Join. **5th rnd:** Sl st in next sp, ch 4 and work as for 4th rnd, increasing 6 sps evenly around both ends of oval. Join. **6th to 9th rnds incl:** Repeat 4th and 5th rnds alternately. Join and  
*Continued on page 12*



**DOILY . . . . . CL-266***Continued from page 11*

break off at end of 9th rnd. Attach Blue to any dc. **10th to 15th rnds incl:** Sl st in next ch-1 sp, ch 4, dc in same sp, \* in next ch-1 sp make dc, ch 1 and dc. Repeat from \* around. **Join. 16th rnd:** Sl st in next ch-1 sp, \* ch 10, skip next ch-1 sp, sc in next ch-1 sp. Repeat from \* around. **17th, 18th and 19th rnds:** \* Ch 10, sc in next loop. Repeat from \* around. **20th to 23rd rnds incl:** \* Ch 11, sc in next loop. Repeat from \* around. Join and break off at end of 23rd rnd.

**BODICE (Make 2) . . .** Starting at neck with Salmon Pink, ch 4. **1st row:** Sc in 2nd ch from hook, sc in next 2 ch. Ch 1, turn. **2nd row:** Sc in each sc across. Ch 3, turn. **3rd row:** 2 dc in each of the next 2 sc, 3 dc in next sc (4 dc increased). Ch 4, turn. **4th row:** Dc in 4th ch from hook, dc in next dc, 2 dc in next dc, dc in next 4 dc, 2 dc in next dc, 3 dc in top of turning chain. Ch 4, turn. **5th row:** Dc in 4th ch from hook, dc in each dc across, increasing 3 dc evenly across, 3 dc in turning chain. Ch 3, turn.

**ARM . . .** Dc in first dc, dc in next 2 dc. Ch 3, turn. **Next row:** Dc in next 2 dc, dc in turning chain. Ch 3, turn. Repeat last row 4 more times. Ch 3, turn. **Next row:** Holding back on hook the last loop of each dc, make dc in next 2 dc, dc in turning chain, thread over and draw through all loops on hook (cluster made). Ch 3, turn. **Following row:** Make a 4-dc cluster in tip of last cluster. Break off. Work other Arm to correspond. Break off. Attach White to base of Arm and continue to work Bodice as follows: **1st row:** Ch 3, dc in each dc across, dc in base of next Arm. Ch 3, turn. **2nd row:** Dc in each dc across, decreasing 1 dc at both ends of row—to dec 1 dc, work off 2 dc as 1 dc. Ch 3, turn. Repeat last row 2 more times. Ch 1, turn. **Next row:** Sc in each dc across. Break off.

**RUFFLE . . .** With White, ch 24. **1st row:** Sc in 2nd ch from hook, \* ch 3, skip next ch, sc in next ch. Repeat from \* across. Ch 4, turn. **2nd row:** \* Sc in next loop, ch 4. Repeat from \* across. Ch 5, turn. **3rd row:** \* Sc in next loop, ch 5. Repeat from \* across. Break off.

**HEAD . . .** With Salmon Pink, ch 8, dc in 4th ch from hook, dc in each ch across, 2 dc in last ch. Break off. Attach White to first ch of turning chain, sc in same place, half dc and dc in next ch, 2 dc in next ch, 2 dc in next 2 dc, dc in next 2 dc, 2 dc in next 2 dc; on side of last dc make 3 dc, half dc and sc. Break off.

**FAN . . .** With Blue, ch 4. **1st row:** Sc in 2nd ch from hook, sc in next 2 ch. Ch 3, turn. **2nd row:** 2 dc in first sc, (ch 2, 3 dc in next sc) twice. Ch 3, turn. **3rd and 4th rows:** Dc in each dc across, in each ch-2 sp make dc

ch 2 and dc; dc in turning chain. Ch 3, turn. At end of 4th row ch 1, turn. **5th row:** \* Sc in next st, ch 3, sl st in 3rd ch from hook (picot), skip next st. Repeat from \* across. Break off.

**FLOWER . . .** With Beauty Pink, ch 5. Join with sl st to form ring, (ch 5, sc in ring) 5 times. Break off.

**LEAF . . .** Attach Green to any sc, ch 6, sl st in 6th ch from hook. Break off.

**BOW KNOT (Make 2) . . .** With White make a chain 24 inches long. Sc in 2nd ch from hook, sc in each ch across until row measures 20 inches. Cut off remaining chain and break off. Sew Flower to Ruffle, sew Ruffle to Bodice. Pin Fan in place and sew neatly. Pin Head in place. Sew one Figure to each end of center of oval. Form bow knots and sew in place. Starch lightly and press.

**GUEST TOWEL . . CL-273***Continued from page 7*

dc in same place, 2 dc in each ch across. Ch 3, turn. **2nd row:** Dc in first dc, 2 dc in each dc across, ending with dc in top of turning chain. Ch 3, turn (35 dc). **3rd and 4th rows:** Skip first dc, dc in each dc across. Ch 3, turn. At end of 4th row, ch 1 to turn. **5th row:** Picking up back loop only, sc in first dc, \* ch 3, sc in back loop of next dc. Repeat from \* across. Ch 4, turn. **6th row:** \* Sc in next loop, ch 4. Repeat from \* across, ending with sc in last loop. Break off. **7th row:** Attach Yellow to front loop of first dc on 4th row, ch 3, dc in each dc across. Ch 3, turn. **8th row:** Skip first dc, dc in next dc, \* ch 3, skip 1 dc, dc in next 2 dc. Repeat from \* across. Ch 3, turn. **9th to 14th rows incl:** Skip first dc, dc in next dc, \* ch 3, dc in next 2 dc. Repeat from \* across. Ch 3, turn. At end of 14th row, ch 1 to turn. **15th row:** \* Sc in next dc, 4 dc in next sp, skip next dc. Repeat from \* across, ending with sc in top of turning chain. Ch 3, turn. **16th row:** 3 dc in first sc, \* skip 2 dc, sc in next dc, 4 dc in next sc. Repeat from \* across, ending with sc. Break off.

**RUFFLE . . . 1st row:** Attach Blue to first st on 13th row, sc closely across, making sc in each st and 3 sc in each sp across. Ch 1, turn. **2nd row:** Sc in first sc, \* ch 4, skip 1 sc, sc in next sc. Repeat from \* across. Turn. **3rd and 4th rows:** Sc in first loop, \* ch 4, sc in next loop. Repeat from \* across. Turn. Break off at end of 4th row.

**HEAD . . . 1st rnd:** Starting at center with 2 strands of Salmon Pink, ch 4, 4 dc in 4th ch from hook, in same ch make 3 half dc, 5 dc, and 3 half dc. Join to top of starting chain.

**NECK AND SHOULDER . . . 1st row:** Sc in next 3 dc. Ch 1, turn. **2nd**

**row:** Sc in next 3 sc. Ch 3, turn. **3rd row:** 2 dc in first sc, 3 dc in each sc across. Ch 3, turn. **4th row:** Dc in each dc across. Break off.

**COLLAR . . . 1st row:** Attach Blue to first dc of shoulder, ch 3, dc in first dc, 2 dc in each dc across. Ch 3, turn. **2nd row:** \* Sc in next dc, ch 3. Repeat from \* across. Break off. Sew to waist.

**ARM (Make 2) . . .** Starting at top with Pink, ch 5. **1st row:** Dc in 4th ch from hook, dc in next ch. Ch 3, turn. **2nd row:** Skip first dc, dc in next dc, dc in top of turning chain. Ch 3, turn. Repeat 2nd row until piece measures 1 inch. Ch 3, turn. **Next row:** Skip first dc, holding back on hook the last loop of each dc make dc in next dc and in top of turning chain, thread over and draw through all loops on hook (cluster made). Ch 3, turn. **Following row:** Cluster in tip of last cluster made. Break off. Sew Arms in place.

**HAIR . . .** Attach 2 strands of White to first free half dc on Head, sc in each half dc and each dc across Head. Break off.

**HAT . . .** Starting at center with Blue, ch 4. **1st rnd:** 16 dc in 4th ch from hook. Join to top of starting chain. **2nd rnd:** Sc in same place as sl st, sc in each dc around. Join and break off. Sew Hat to Head.

Using Yellow double, make a chain 2 inches long. Lace through ch-1 sps at waist. Tie and break off. Using Yellow single, make a chain 2½ inches long. Tie into a bow and sew to top of hat. Starch lightly and press. Sew Crinoline Lady to towel.

**HANDKERCHIEFS CL-274***Continued from page 13*

across. Ch 3, turn. Break off at end of 5th row. Sew in place.

**FLOWER (Make 7) . . .** With Rose, ch 6, sl st in 6th ch from hook, (ch 5, sl st in same ch) 4 times. Break off. Sew a flower between scallops and one at end of arm.

Pin Crinoline Lady to corner of handkerchief. Cut away material in back of skirt, leaving ¼ inch free for hem. Sew neatly in place, leaving lower edge of skirt free.

**EDGING . . .** Attach Blue to first hole of hemstitching at side of cut-away corner. **1st rnd:** Sc closely around all sides, making 3 sc in each corner. Ch 10, turn. **2nd rnd:** \* Skip 5 sc, dc in next 5 sc, ch 7. Repeat from \* around all sides, being sure to have ch 7 over each corner and ending with ch 7, dc in last sc. Ch 7, turn. **3rd rnd:** \* Holding back on hook the last loop of each dc, make dc in each of the next 5 dc, thread over and draw through all loops on hook (cluster made), ch 7, skip next 2 sc on 1st row of Edging, working over the ch-7 below make sc in next sc, ch 7. Repeat from \* around all sides. Break off.

# Crinoline Handkerchiefs

CL-274

## MATERIALS:

J. & P. Coats Tatting-Crochet, Size 70,  
1 ball each of Blue (No. 8), Rose  
(No. 46) and Salmon Pink (No.  
123), or colors as desired . . . Steel  
Crochet Hook No. 14 . . . Hem-  
stitched handkerchief, 11 inches  
square.

**CRINOLINE LADY . . .** Starting  
with Blue at center of Body, ch 8.  
Join with sl st to form ring. **1st rnd:**  
Ch 3, 20 dc in ring. Join with sl st to  
top of ch-3. **2nd rnd:** Ch 3, dc in  
same place as sl st, \* dc in each of  
the next 2 dc, 2 dc in next dc (1 dc  
increased). Repeat from \* around.  
Join. Ch 4, turn.

**SKIRT . . .** Now work in rows as  
follows: **1st row:** Dc in next dc, (ch 1,  
dc in next dc) 5 times. Ch 3, turn.  
**2nd row:** Dc in first dc, \* ch 1, 2 dc  
in next dc. Repeat from \* across, end-  
ing with skip 1 ch of turning chain,  
2 dc in next ch. Ch 3, turn. **3rd row:**  
Skip first dc, \* 2 dc in next dc, ch 1,  
dc in next dc. Repeat from \* across,  
ending with 2 dc in top of turning  
chain. Ch 3, turn. **4th to 10th rows  
incl:** Skip first dc of first dc-group,  
dc in each dc of same group increasing  
1 dc at center, \* ch 2, dc in each dc  
of next group increasing 1 dc at center.  
Repeat from \* across, ending with  
dc in top of turning chain. Ch 3, turn.  
At end of 10th row, ch 1 to turn.  
**11th row:** Sc in first dc, \* half dc in  
next dc, dc in each of next 2 dc, tr  
in each of the next 2 dc, dc in each of  
the next 2 dc, half dc in next dc, sc in  
next dc, ch 1, working over the ch-2,  
make a sl st in next sp 2 rows below,  
ch 1, sc in next dc. Repeat from \*  
across, ending with sc in turning chain.  
Break off.

**ARM . . .** With Pink, ch 4. **1st row:**  
Sc in 2nd ch from hook and in each  
of next 2 ch. Ch 1, turn. **2nd row:**  
Sc in each sc across. Ch 1, turn. Repeat  
2nd row until piece measures 1 inch.  
Break off. Sew arm in place.

**COLLAR . . .** With Blue, ch 6. **1st  
row:** Sc in 2nd ch from hook and in  
each ch across. Ch 1, turn. **2nd row:**  
Sc in each sc across. Ch 6, turn. **3rd  
row:** \* In next sc make (dc, ch 3)  
twice; dc in next sc, ch 3. Repeat  
from \* across, ending with dc. Break  
off. Sew Collar to top of Body.

**HAT . . .** Beginning at crown with  
Rose, ch 8. **1st row:** Dc in 4th ch  
from hook and in each ch across. Ch 3,  
turn. **2nd and 3rd rows:** Skip first dc,  
dc in each dc across, 2 dc in top of  
turning chain. Ch 3, turn. **4th and 5th  
rows:** Dc in first dc, 2 dc in each st

*Continued on page 12*



# Lover's Knot BRIDGE CLOTH CL-270

**MATERIALS:**

**J. & P. Coats or Clark's O.N.T. Best Six Cord Mercerized Crochet, Size 30:**

**Bridge Cloth**

**SMALL BALL:**

**J. & P. COATS**—6 balls of Dark Lavender (No. 37), 3 balls of Yellow (No. 9), and 1 ball each of Bright Nile Green (No. 26-B), Blue (No. 8), Dark Yellow (No. 43), and Beauty Pink (No. 65), or

**CLARK'S O.N.T.**—10 balls of Dark Lavender (No. 37), 5 balls of Yellow (No. 9), and 1 ball

each of Bright Nile Green (No. 26-B), Blue (No. 8), Dark Yellow (No. 43), and Beauty Pink (No. 65), and

**Clark's Big Ball Three Cord Mercerized Crochet, Size 30, 1 ball of Salmon Pink (No. 123).**

Steel Crochet Hook No. 10.

**Napkins**

**J. & P. Coats Tatting-Crochet, Size 70**—4 balls of Dark Lavender (No. 37), 1 ball each of Bright Nile Green (No. 26-B), Yellow (No. 9), and Salmon Pink (No. 123).

Steel Crochet Hook No. 14.

A piece of dark green linen, 40 inches square, for cloth.

1 piece of light green, coral, and yellow linen, 18 inches square for each napkin.

Make a narrow hem all around outer edge of cloth and napkins.

**CRINOLINE LADY (Make 4) SKIRT . . .** Starting at waist with Dark Lavender, ch 12. **1st row:** Sc in 2nd ch from hook and in each ch across. Ch 3, turn. **2nd row:** Dc in first sc, \* dc in next sc, 2 dc in next sc. Repeat from \* across. Ch 4, turn. **3rd row:** Dc in first dc, \* ch 1, dc in next

*Continued on page 15*



## BRIDGE CLOTH . . . CL-270

*Continued from page 14*

dc. Repeat from \* across, ending with (ch 1, dc) twice in 3rd ch of turning chain (inc made). Ch 4, turn. **4th row:** Skip first dc, \* dc in next dc, ch 1. Repeat from \* across increasing 2 sps evenly across and ending with dc in turning chain. Ch 4, turn. **5th to 9th rows incl:** Dc in first dc, \* ch 1, dc in next dc. Repeat from \* across, increasing 2 sps evenly across and ending with dc in turning chain. Ch 4, turn. **10th to 15th rows incl:** Skip next dc, \* dc in next dc, ch 1. Repeat from \* across, increasing 2 sps evenly across. Ch 4, turn. Work as for last row without increasing until 22 rows in all are made. Break off Lavender and attach Yellow.

**BOTTOM RUFFLE . . . 1st row:** \* Sc in same dc, ch 3, sc in next dc. Repeat from \* across. Ch 4, turn. **2nd row:** \* Sc in next loop, ch 4. Repeat from \* across, ending with sc in last loop. Ch 5, turn. **3rd row:** \* Sc in next loop, ch 5. Repeat from \* across. Break off.

**RUFFLE (Make 4) . . .** Starting at center with Lavender, ch 60 to measure length of Lavender on Skirt. **1st row:** Sc in 2nd ch from hook, \* ch 5, skip next ch, sc in next ch. Repeat from \* across (29 loops on row). Ch 5, sc in same ch as last sc. Now working along opposite side of starting chain, \*\* ch 5, skip next ch, sc in next ch. Repeat from \*\* across. Break off (top). **2nd row:** Attach thread to 9th loop from top, sc in same loop, \* ch 6, sc in next loop. Repeat from \* across to corresponding loop at opposite side. Break off. **3rd row:** Attach thread to 9th loop on 2nd row, sc in same loop, \* ch 7, sc in next loop. Repeat from \* across to corresponding loop at opposite side. Break off. **4th row:** Attach Yellow to first loop on 1st row, sc in same loop, \* ch 4, sc in next loop. Repeat from \* across to end of row.

Break off. Sew Ruffles to Skirt as illustrated.

**TOP OF FIGURE . . .** Starting at crown of Hat with Lavender, ch 6. **1st row:** Dc in 4th ch from hook, dc in next ch, 2 dc in last ch. Ch 4, turn. **2nd row:** 2 dc in 4th ch from hook, 3 dc in each dc across, 3 dc in top of turning chain. Ch 4, turn. **3rd row:** Tr in first dc, in next dc make tr and 2 dc, half dc in next dc, \* sc in next dc, 2 sc in next dc. Repeat from \* across to within last 2 dc, half dc in next dc, in next dc make 2 dc and tr, 2 tr in turning chain. Ch 4, turn. **4th row:** Tr in first st, in next st make tr and dc, in next st make dc and half dc, sc in each st across to within last 2 sts and turning chain, half dc and dc in next st, dc and tr in next st, 2 tr in turning chain. Ch 5, turn. **5th row:** 2 d tr in first st, in next st make d tr and tr, in next st make 2 dc, half dc in each st across to within last 2 sts and turning chain, 2 dc in next st, tr and d tr in next st, 2 d tr in turning chain. Break off.

Mark center of row on hat with pin. Attach Salmon Pink to 2nd st to the right of marker and work as follows: **1st row:** Sc in same place where thread was attached, skip next st, 5 dc in next st, skip next st, sc in next st. Turn. **2nd row:** Sl st to 2nd dc, sc in next 3 dc. Ch 4, turn. **3rd row:** Dc in 4th ch from hook, 2 dc in next 2 sc, 3 dc in next sc. Ch 3, turn. **4th row:** Dc in first dc, 2 dc in each dc across, 2 dc in turning chain. Ch 3, turn. **5th row:** \* Dc in first dc, dc in next 2 dc, 2 dc in next dc. Repeat from \* across. Break off. Attach Lavender and work as follows:

**BODICE . . . 1st row:** Ch 4, dc in next dc, \* ch 1, skip next dc, dc in next dc. Repeat from \* across. Turn. **2nd row:** Sl st across next 5 sts (base for arm), ch 3, \* dc in next dc, ch 1. Repeat from \* across to within last 5 sts (base for other arm). Ch 3, turn. **3rd row:** \* Dc in next dc, ch 1. Repeat from \* across. Ch 3, turn. **4th row:** Dc in each dc across. Ch 3, turn.

**5th row:** \* Work off next 2 dc as 1 dc (dec). Repeat from \* across. Break off.

**ARMS . . .** Attach Salmon Pink to one base for Arm, ch 3, dc in next 4 sts. Ch 3, turn. **Next row:** Skip first dc, dc in next 3 dc, dc in turning chain. Ch 3, turn. Repeat last row 5 more times. Ch 3, turn. **Next row:** Holding back on hook the last loop of each dc, make dc in next 3 dc, dc in turning chain, thread over and draw through all loops on hook (cluster made). Ch 3, turn. Make a 4-dc cluster in tip of cluster just made. Break off. Work other Arm to correspond.

With Green make a chain to reach across top row of Bodice, half dc in 3rd ch from hook, half dc in each ch across. Break off. Pass through sps of top row and tack in place.

**BOWS . . .** With Green ch 16, sl st in 7th ch from hook, (ch 7, sl st in last sl st) 3 times; ch 9. Break off. Sew to one shoulder. With Yellow make a bow and sew to Hat.

**BOW (Make 4) . . .** With Yellow make a chain 60 inches long. Half dc in 3rd ch from hook, half dc in each ch across until row measures 56 inches. Cut off remaining chain. Break off.

**FLOWER (Make 16 Yellow, 16 Blue, 24 Beauty Pink and 8 Pink) . . .** Ch 5, join with sl st to form ring. **1st rnd:** (Ch 5, sc in ring) 5 times. Break off.

**LEAF . . .** Attach Green to any sc, ch 8, sl st in 8th ch from hook. Break off.

Sew Crinoline Ladies, Bows and Flowers to Tablecloth as illustrated. Make 4 Pink flowers and 4 Blue flowers. Sew one of each color at center of Bows.

**NAPKINS . . .** Make a Crinoline Lady for each Napkin same as for Tablecloth, using Tatting-Crochet, Size 70 and No. 14 hook. Sew to one corner of Napkin.

## Abbreviations in Crochet

ch . . . . . chain	tr . . . . . treble	st . . . . . stitch
sc . . . . . single crochet	d tr . . . . . double treble	rnd . . . . . round
half dc . . . . . half double crochet	tr tr . . . . . triple treble	incl . . . . . inclusive
dc . . . . . double crochet	sl st . . . . . slip stitch	inc . . . . . increase
	bl . . . . . block	dec . . . . . decrease
	sp . . . . . space	

\* (asterisk) . . . Repeat the instructions following the asterisk as many times as specified, in addition to the original.

Repeat instructions in parentheses as many times as specified. For example: "(Ch 5, sc in next sc) 5 times" means to make all that is in parentheses 5 times in all.



# Crinoline Lady in Crochet



10¢