

FREE DISTRIBUTION ONLY. NOT FOR SALE

## Antique Pattern Library

For more information, please see our website at: <http://www.antiquepatternlibrary.org>

This is a scan of an antique book that is, to the best of our knowledge, in the public domain. The scan itself has been edited for readability, and is licensed under the **Creative Commons** Attribution-NonCommercial-ShareAlike License. To view a copy of this license, visit <http://creativecommons.org/licenses/by-nc-sa/2.5/> or send a letter to Creative Commons, 559 Nathan Abbott Way, Stanford, California 94305, USA.

**You may share copies or printouts of this scan freely. You may not sell copies or printouts.**

*Antique Pattern Library is a project of New Media Arts, Inc. <http://www.newmediaarts.org>, a nonprofit organization tax-exempt under IRC 501(c)(3). Donations may be tax deductible, depending on your tax status and tax jurisdiction.*

Donated by

Public Domain Tatting Archive 2006

# Doilies

*Lily* 

DESIGN BOOK No. 79

10¢

PRINTED IN U.S.A.



# "Swirls"

## DOILY

**DAISY MERCERIZED CROCHET COTTON**, Art. 65: ½-skein White, Size 20; or

**LILY MERCERIZED CROCHET COTTON**, Art. 36: ½-Big Ball White, Size 20; or

**LILY MERCROCHET MERCERIZED COTTON**, Art. 161: 1-ball White, Size 20.

Work tightly for best results.

No. 12 Steel Crochet Hook.

SIZE — 12½ inches.

Starting in center, ch 3, 6 sc in 2d ch from hook, join to 1st sc.

**Rnd 2:** Ch 10, dc in next sc, (ch 7, dc in next sc) 4 times, ch 4, join with dc in 3d st of ch-10.

**Rnd 3:** 6 dc in same st, sc in next ch-7 lp, (6 dc in back lp of next dc, sc in next lp) 4 times, 6 dc in next dc, join with sl st in 1st 2 dc.

**Rnd 4:** \*\* Ch 16, \* sk 1 ch, sc in next ch, hdc in next ch, dc in next ch, holding back the last lp of each dc made dc in next 2 ch, Y O and draw thru all 3 lps on hook at same time (Cluster-dec), dc in next ch, hdc in next ch, sl st in next ch, \* (ch 9, repeat from \* to \*) twice, sk 3 petals, sl st in next ch, sc in next ch, hdc in next ch, (dc in next 2 ch) made into a dec, tr in next ch, 2 tr in next (end) ch, sk 4 dc, sl st in next 3 sts; repeat from \*\* around; join and fasten off.

**Rnd 5:** Attach to 1st petal of 1 group, \* ch 10, (dc, ch 5, dc) in next petal, ch 10, sc in next petal, ch 3, sc in 1st petal of next group; repeat from \* around; join, sl st in 1st 2 ch of next lp.

**Rnd 6:** Ch 5, sk 2 ch, dc in next ch, (ch 2, sk 2 ch, dc in next st) 3 times, \* ch 5, dc in same st with last dc, (ch 2, sk 2 ch, dc in next st) 4 times, ch 2, dc in 2d st of next ch-3 sp, ch 2, dc in 2d st of next ch-10, (ch 2, sk 2 ch, dc in next st) 4 times; repeat from \* around; join to 3d st of 1st ch-5.

**Rnd 7:** Ch 1, sc in same st, (2 sc in next sp, sc in next dc) 4 times, \* 3 sc in next ch-5 sp, ch 8, turn, sl st in 8th ch from hook to form ring, ch 1, turn, (1 sc, 1 hdc, 14 dc, 1 hdc and 1 sc) in ring, 3 sc in bal. of ch-5 sp, sc in next dc, (2 sc in next sp, sc in next dc) 10 times; repeat from \* around; join to 1st sc, ch 1, sc in same sc.

**Rnd 8:** \* Ch 4, long tr (Y O 5 times and work off in twos as for tr tr) in hdc (2d st) on next ring, (ch 4, tr tr in next st) 13 times, ch 4, long tr in next st, ch 4, sk 15 sc, sc in next 2 sc, (sk 1 sc, sc in next sc) twice, sc in next sc; repeat from \* around; join to 1st sc, sl st to 2d ch-4 sp.

**Rnd 9:** Ch 3, dc in same sp, \* (ch 4, 2 dc in next sp) 13 times, 2 dc in 2d sp on next circle; repeat from \* around; join to 1st ch-3, sl st to 2d ch-4 sp.

**Rnd 10:** Ch 3, 2 dc in same sp, \* (ch 4, 3 dc in next sp)

10 times, 3 dc in 2d ch-4 sp on next circle; repeat from \* around; join to 1st ch-3, sl st to next ch-4 sp.

**Rnd 11:** Ch 3, dc in same sp, \* (ch 4, 4 dc in next sp) 8 times, ch 4, 2 dc in next sp, 2 dc in 1st ch-4 sp on next circle; repeat from \* around; join to 1st ch-3, sl st to next ch-4 sp.

**Rnd 12:** Ch 12, sl st in 5th ch from hook for a p, ch 8, p, ch 3, tr in next sp, (ch 7, p, ch 8, p, ch 3, tr in next sp) 7 times, \* tr in 1st sp on next circle, (ch 7, p, ch 8, p, ch 3, tr in next sp) 8 times; repeat from \* around; join to 5th st of 1st lp, sl st to center st between next 2 ps.

**Rnd 13:** Ch 12, p, ch 8, p, ch 3, tr in next p-lp, (ch 7, p, ch 8, p, ch 3, tr in next p-lp) 6 times, \* tr in next p-lp, (ch 7, p, ch 8, p, ch 3, tr in next p-lp) 7 times; repeat from \* around; join to 5th st of 1st lp, sl st to center of same lp.

**Rnd 14:** Ch 13, p, ch 9, p, ch 4, tr in next p-lp, (ch 8, p, ch 9, p, ch 4, tr in next lp) 5 times, \* tr in next lp, (ch 8, p, ch 9, p, ch 4, tr in next lp) 6 times; repeat from \* around; join to 5th st of 1st lp, sl st to center st of same lp.

**Rnd 15:** Ch 10, tr in same st, \* ch 9, (tr, ch 5, tr) in center st of next lp; repeat from \* around; join with ch 4, tr in 5th st of 1st ch-10.

**Rnd 16:** \* (Ch 1, tr) 8 times in next ch-5 sp, ch 1, sc in next ch-9 sp; repeat from \* around.

**Rnd 17:** \* 1 sc in next ch-1 sp, (2 sc in next sp) 5 times, ch 10, turn, sk 5 sc, sl st in next sc, ch 1, turn, 8 sc in 2/3'ds of lp, ch 8, turn, sk 3 sc, sl st in next sc, ch 1, turn, 5 sc in half of lp, ch 5, sl st in last sc for a p, 5 sc and 1 sl st in bal. of lp, ch 1, 4 sc and 1 sl st in bal. of next lp, ch 1, (2 sc in next sp) twice, 1 sc in next (end) sp; repeat from \* around; join and fasten off.

Stretch and pin doily right-side-down in a true circle. Steam and press dry thru a cloth.



# Pointed Harmony

## DOILY

**DAISY MERCERIZED CROCHET COTTON**, Art. 65: ½-skein White, Size 20; or

**LILY MERCERIZED CROCHET COTTON**, Art. 36: ½-Big Ball White, Size 20; or

**LILY MERCERIZED CROCHET COTTON**, Art. 161: 1-ball White, Size 20.

No. 12 Steel Crochet Hook.

Work tightly for best results.

SIZE — 13 inches.

Starting in center, ch 9, join with sl st to form ring.

**Rnd 1:** Ch 1, 16 sc in ring, join with sl st in 1st sc.

**Rnd 2:** Ch 4, dc in next sc, (ch 1, dc in next sc) 14 times, ch 1, join to 3d st of ch-4.

**Rnd 3:** Ch 3, (2 dc in next sp, dc in next dc, ch 5, sl st in last dc for a p, 2 dc in next sp, dc in next dc) repeated around; join to ch-3.

**Rnd 4:** Ch 16, (tr in center dc between next 2 ps, ch 11) repeated around; join to 5th st of ch-16.

**Rnd 5:** Ch 1, sc in same st, (13 sc in next sp, sc in next tr) repeated around; join to 1st sc.

**Rnd 6:** Ch 7, holding back the last lp of each dtr on hook make 2 dtr in same st, YO and draw thru all 3 lps on hook at same time (Cluster), \* (ch 6, sl st in 5th st from hook for a p) 3 times, ch 3, sk 6 sc, sc in next sc, ch 7, p, (ch 6, p) twice, ch 2, sk 6 sc, 3-dtr Cluster in next sc; repeat from \* around; join to 1st Cluster.

**Rnd 7:** Ch 27, (tr in next Cluster, ch 22) repeated around; join to 5th st of ch-27.

**Rnd 8:** Sc in next sp, \*\* (ch 2, sc) 13 times across same sp. Ch 1, turn, sc in 1st ch-2 lp, (ch 2, sc in next lp) 12 times. \* Ch 1, turn, sc in 1st lp, (ch 2, sc in next lp) repeated across (1 less lp than last row). Repeat from \* 9 times; ch 1, turn, sc in 1st lp, ch 1, hdc in next lp. Cut 2 inches long. Attach to next ch-22 sp and repeat from \*\* around. Do not cut after 8th point.

**Rnd 9:** Sc in bar of hdc, \* (2 sc in next sp down side of point) 11 times, 1 sc in next sp, sc in next tr, sc in 1st sp on next point, (2 sc in next sp) 6 times, ch 8, turn, long tr (thread over 5 times and work off in twos as for a tr tr) in sc between points, ch 8, sl st in 13th sc up next point, ch 1, turn, (5 sc, ch-5 p, 5 sc) in 1st sp, sc in long tr, (5 sc, p, 5 sc) in next sp, (2 sc in next sp on point) 5 times, 1 sc in next (tip) sp, ch 19, turn, dc in center sc between ps, ch 19, sl st in 11th sc up next point, ch 1, turn, (11 sc, p, 11 sc) in 1st sp, sc in dc, (11 sc, p, 11 sc) in next sp, 2 sc in same tip sp on point; repeat from around; end with 1 sc in tip sp.

**Rnd 10:** Ch 23, \* (tr tr, ch 9, tr tr) in center sc between ps, ch 20, dc in sc in tip of next point, ch 20; repeat from \* around; join to 3d st of ch-23.

**Rnd 11:** Ch 1, sc in same st, (23 sc in next sp, sc in tr, 11 sc in next sp, sc in next tr, 23 sc in next sp, sc in next dc) repeated around; join to 1st sc.

**Rnd 12:** Sl st in next sc, \* sc in next sc, (ch 2, sk 1 sc, sc in next sc) 10 times, ch 5, sl st in 5th ch from hook for a p, ch 1, sk 3 sc, dc in next sc, (ch 5, p, ch 1, sk 1 sc, dc in next sc) 4 times, ch 5, p, ch 1, sk 3 sc, sc in next sc, (ch 2, sk 1 sc, sc in next sc) 10 times, sk 3 sc in angle and repeat from \* around; join to 1st sc.

**Rnd 13:** \* Sc in next ch-2 lp, (ch 2, sc in next lp) 8 times, (ch 6, p, ch 2, tr in next dc) 5 times, ch 6, p, ch 2, sk 1 ch-2 lp, sc in next lp, (ch 2, sc in next lp) 8 times; repeat from \* around; join to 1st sc.

**Rnd 14:** \* Sc in next ch-2 lp, (ch 2, sc in next lp) 6 times, (ch 7, p, ch 3, tr in next tr) 3 times, ch 7, p, ch 3, tr in same tr, (ch 7, p, ch 3, tr in next tr) twice, ch 7, p, ch 3, sk 1 ch-2 lp, sc in next lp, (ch 2, sc in next lp) 6 times; repeat from \* around; join to 1st sc.

**Rnd 15:** \* Sc in next ch-2 lp, (ch 2, sc in next lp) 4 times, (ch 8, p, ch 4, tr in next tr) 3 times, ch 8, p, ch 9, p, ch 4, tr in next tr, (ch 8, p, ch 4, tr in next tr) twice, ch 8, p, ch 4, sk 1 ch-2 lp, sc in next lp, (ch 2, sc in next lp) 4 times; repeat from \* around; join to 1st sc.

**Rnd 16:** \* Sc in next ch-2 lp, (ch 2, sc in next lp) twice, (ch 9, p, ch 5, tr in next tr) 3 times, ch 9, p, ch 5, tr in center st between next 2 ps, ch 9, p, ch 5, tr in same st, (ch 9, p, ch 5, tr in next tr) 3 times, ch 9, p, ch 5, sk 1 ch-2 lp, sc in next lp, (ch 2, sc in next lp) twice; repeat from \* around; join to 1st sc. Fasten off.

**Rnd 17:** Attach to final tr on 1 pattern, ch 5, \* tr in 1st tr on next pattern, (ch 12, tr in next tr) 3 times, ch 7, (tr, ch 7, tr) in next p, ch 7, tr in next tr, (ch 12, tr in next tr) 4 times; repeat from \* around; join to 1st ch-5.

**Rnd 18:** (7 sc, ch-5 p, 7 sc) in each ch-12 sp around; (4 sc, p, 4 sc) in each ch-7 sp. Join and fasten off.

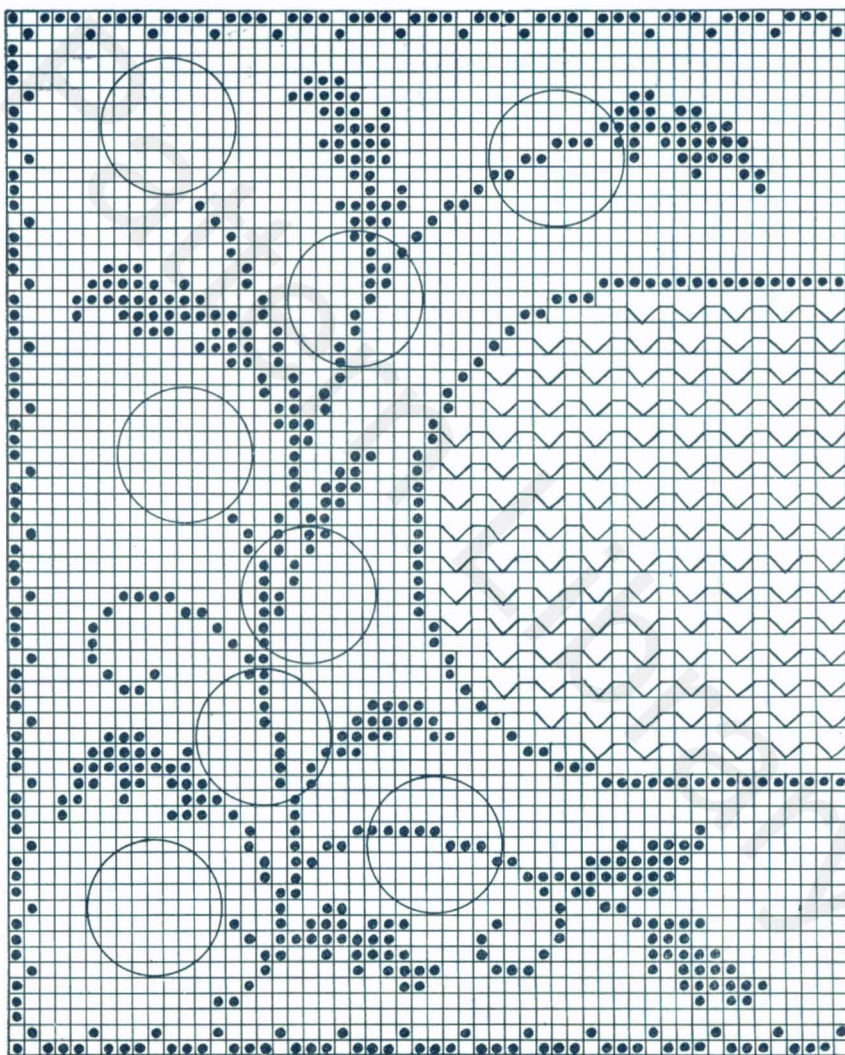
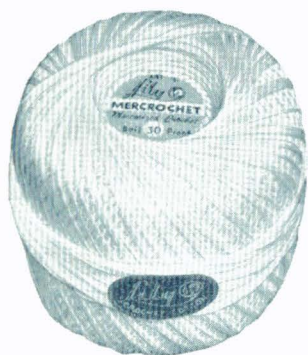
Stretch and pin doily right-side-down in a true circle. Steam and press dry thru a cloth.



# Embossed Daisy

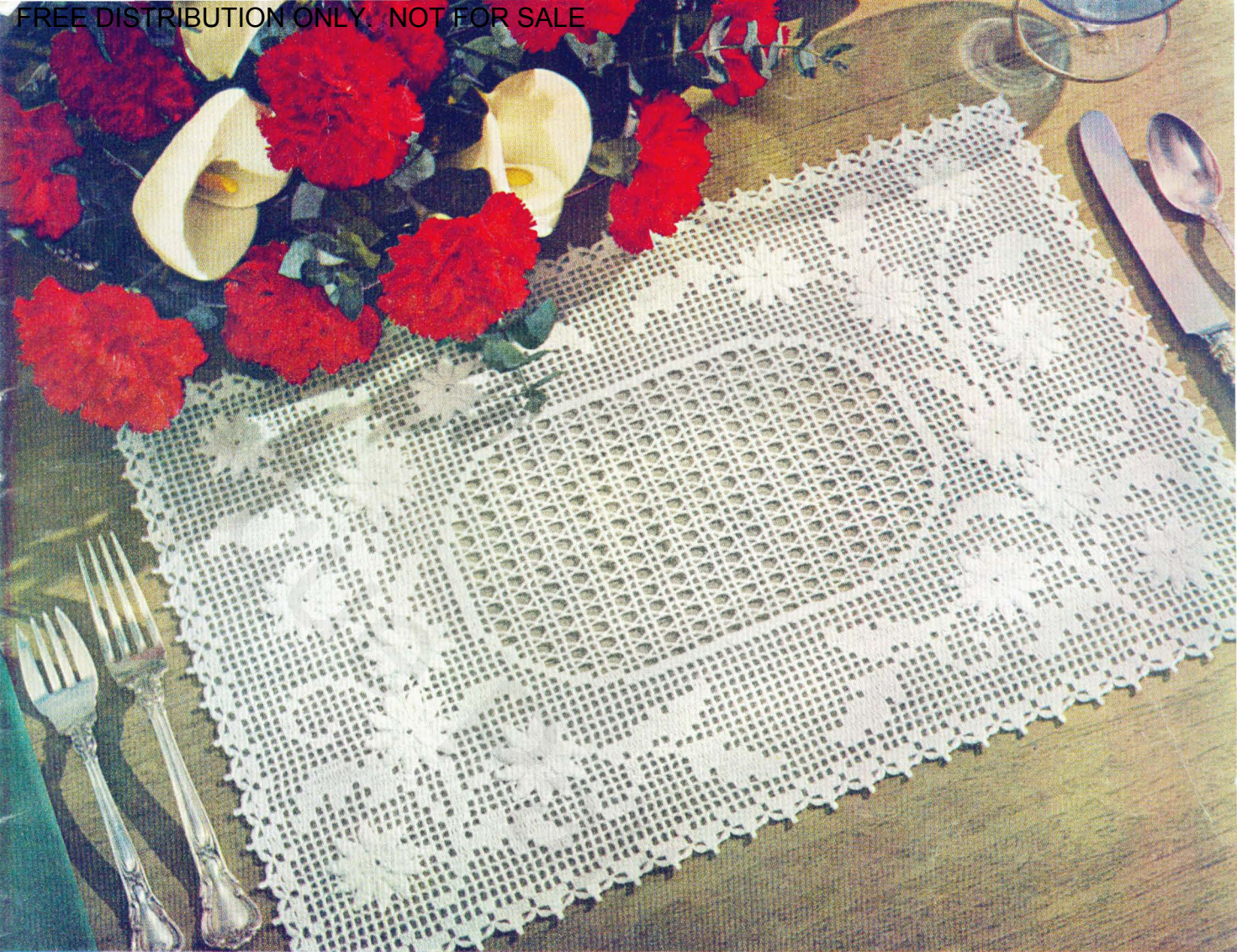


PLACE MAT



PLACE MAT

↑  
CENTER



**DAISY MERCERIZED CROCHET COTTON**, Art. 65: 1 skein White, Size 30; or

**LILY MERCERIZED CROCHET COTTON**, Art. 36: 1 ball White, Size 30; or

**LILY MERCROCHET MERCERIZED CROCHET COTTON**, Art. 161: 2 balls White, Size 30.

No. 13 Steel Crochet Hook.

SIZE — 12 x 18 inches.

Gauge — 6 sps - 1 inch; 6 rows - 1 inch.

Ch 313.

**Row 1:** Starting at bottom edge, sk 4 ch, dc in next 3 ch, (ch 2, sk 2 ch, dc in next 10 ch) 25 times, ch 2, sk 2 ch, dc in 4 end ch. Mark right side of this row as right side of Mat.

**Row 2:** Ch 5, turn, sk 3 dc, dc in next dc, \* 2 dc in next sp, dc in next dc, (ch 2, sk 2 dc, dc in next dc) 3 times; repeat from \* across; end with ch 2, dc in end ch-3.

**Row 3:** Ch 3, turn, 2 dc in 1st sp, dc in next dc, make sps across, 2 dc in end sp, dc in 3d (center) st of same sp. Follow Chart thru Row 18.

**Row 19:** Ch 3, turn, 1 blk, 3 sps, 8 blks, 5 sps, 1 blk, 1 sp, 1 blk, 15 sps, 3 blks and 2 sps; (ch 5, sk 5 dc, dc in next dc, ch 2, sk 2 dc, dc in next dc) 8 times, 1 sp, 3 blks and complete row as in Chart.

**Row 20:** Ch 3, turn, 1 blk, 4 sps, 5 blks, 1 sp, 1 blk, 5 sps, 1 blk, 2 sps, 3 blks, 10 sps, 2 blks and 2 sps; ch 3, sk 2 dc, sc in next dc, ch 3, dc in next dc (Lacet St),

ch 2, dc in next dc, (ch 3, sc in next ch-5 sp, ch 3, dc in next dc, ch 2, dc in next dc) 8 times, ch 3, sc in next dc, ch 3, sk 2 dc, dc in next dc, 2 sps, 2 blks and follow Chart across.

**Row 21:** Ch 3, turn, 1 blk 5 sps, 3 blks, 8 sps, 1 blk, 3 sps, 4 blks, 2 sps, 2 blks, 3 sps, 1 blk and 1 sp; ch 5, sk next sp, dc in next dc, ch 2, dc in next dc, (ch 5, dc in next dc, ch 2, dc in next dc) 10 times, ch 5, sk 3 dc, dc in next dc, 1 sp, 1 blk and follow Chart across. Continue, following Chart to top (Row 67).

**Edge:** Ch 4, 3 dc in side-top of last dc, \* ch 4, dc in 4th ch from hook, sc in next ch-2 sp, ch 4, dc in 4th ch from hook, dc between next 2 blks, dc in bar of next blk, ch 5, sl st in last dc for a p, dc in bar of same blk, dc between blks; repeat from \* across to corner. In corner st make 4 dc, p and 3 dc. (Ch 4, dc in 4th ch from hook, sc in next sp, ch 4, dc in 4th ch from hook, sk 3 dc, dc in next 2 dc, p, dc in next 2 dc) repeated across; in corner st make 4 dc, p and 3 dc; repeat from \* around. End with 3 dc in 1st corner, join to ch-4, p. Fasten off.

**DAISY:** Ch 7, join with sl st to form ring. Ch 1, 10 sc in ring, join. \* Ch 14, sk 2 ch, sc in next 2 ch, hdc in next ch, dc in next 2 ch, tr in next ch, (tr in next 2 ch) worked off tog into a Cluster-dec, on bal. of chain make 1 tr, 1 dc, 1 hdc and 1 sc; sl st in next sc on ring. Repeat from \* 9 times (10 petals). Join and fasten off. Make 16. Sew 8 on each end of Mat (see circles on Chart). Stretch and pin Mat right-side-down in true shape. Steam and press dry thru a cloth.

# Daisy Frills

**DAISY MERCERIZED CROCHET COTTON**, Art. 65: 1 skein each White and Yellow, Size 20; or

**LILY MERCROCHET MERCERIZED COTTON**, Art. 161: 2 balls each White and Dk. Yellow, Size 20.

No. 12 Steel Crochet Hook.

SIZE — 17 inches.

Work tightly for best results.

**CENTER DAISY RING: 1st DAISY:** With Yellow, \* ch 6, holding back on hook the last lp of each tr, make 2 tr in 6th ch from hook, Y O and draw thru all lps on hook (Cluster), ch 4, sl st in Cluster for a p, ch 6, sl st at base of Cluster. Repeat from \* 5 times. Join with sl st at base of 1st petal, sl st to tip of same petal, (ch 9, sc in next petal) 3 times.

**2d DAISY:** \* Ch 8, 2-tr Cluster in 6th ch from hook, (ch 6, Cluster in 6th ch from hook, a p, ch 6, sl st at base of Cluster) 5 times (making 6 petals), marking 2d petal with a pin, sk 4 petals, join with sl st at base of next

(marked) petal, ch 6, sl st at top of next petal, ch 2, sk 1 ch between Daisies, sl st in next ch. Keeping same side facing, turn Daisy around to right (clockwise), ch 9, sc in next (marked) petal, (ch 9, sc in next petal) twice. Repeat from \* thru 12 Daisies; join with row untwisted, \*\* (ch 9, sc in next petal) twice, ch 9, sc between Daisies. Repeat from \*\* around. Join and fasten off.

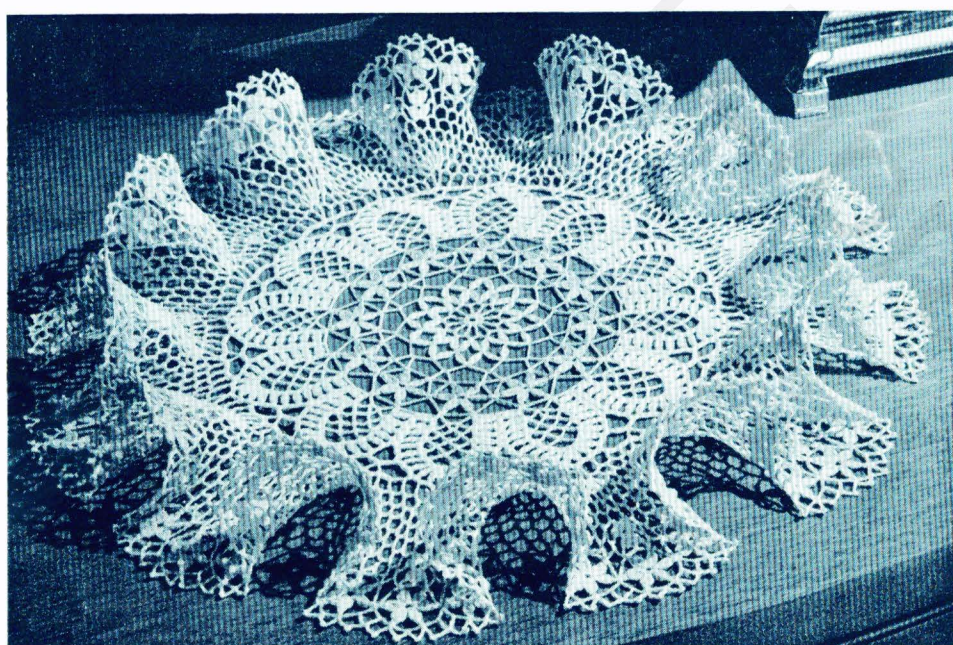
**OUTER DAISY RING:** Make 96 Daisies as for Center Daisy Ring.

**CENTER:** Starting in center with White, ch 8. Join with sl st to form ring.

**Rnd 1:** Ch 1, 12 sc in ring. Join.

**Rnd 2:** Ch 9, tr in next sc, (ch 4, tr in next sc) 10 times, ch 4, join to 5th st of ch-9, sl st in next ch, sc in center of sp.

**Rnd 3:** \* (Ch 6, 2-tr Cluster in 6th ch from hook) twice, ch 1 (Cluster-lp made), sc in next sp; repeat from \* 10 times; ch 6, make a Cluster, join with 3-tr Cluster in 1st sc.



**Rnd 4:** (Make Cluster-lp, sc in center of next Cluster-lp) 11 times, ch 6, make a Cluster, join with 3-tr Cluster in next Cluster-lp.

**Rnd 5:** To join to Center Daisy Ring, ch 12, sk center ch-9 sp on 1 Daisy, sl st in sc in next petal to left, \* ch 6, sl st in adjoining petal on next Daisy, ch 5, sk 5 sts of ch-12, sl st in next ch, ch 6, sc in next Cluster-lp on Center, ch 12, sl st in next petal on same Daisy; repeat from \* around. Join and fasten off.

**PINEAPPLE:** Attach White to right-hand petal on 1 Daisy, ch 1, sc in same st, ch 12, sc in next petal. Ch 10, turn, (sc, ch 6, sc) in ch-12 lp, ch 4, tr down in 1st sc. \* Ch 1, turn, sc in tr, (ch 7, sc in next lp) twice. Ch 10, turn, sc in 1st ch-7 lp, ch 9, sc in next lp, ch 4, tr down in sc. Repeat from \* once. Ch 1, turn, sc in tr, ch 7, sc in next lp, ch 4, tr in next lp. Ch 9, turn, sc in next lp. Cut with 2 inch end. Turn and repeat on each Daisy. Do not cut after 12th Pineapple.

**BORDER:** Ch 1, turn, \* 11 sc in ch-9 lp, sc between sps, 4 sc in next sp, (5 sc in next sp, sc between sps) 3 times, ch 11, sc at base of next Pineapple, (5 sc in next sp, sc between sps) 3 times, 3 sc in next sp, sc between sps; repeat from \* around; join with sl st in 1st 2 sc in next sp.

**Rnd 2:** Ch 5, 2-tr Cluster in same sc, \* (ch 3, sk 1 sc, 3-tr Cluster in next sc) twice, ch 3, 3-tr Cluster in same (center) sc, (ch 3, sk 1 sc, Cluster in next sc) twice, (ch 3, sk 2 sc, Cluster in next sc) 7 times, ch 1, sc in ch-11 lp, ch 1, Cluster in 4th (center) sc in 1st sp on next Pineapple, (ch 3, sk 2 sc, Cluster in next sc) 7 times; repeat from \* around; join to 1st Cluster.

**Rnd 3:** (5 sc in next sp) 12 times, \* 5 sc in 1st ch-3 sp on next Pineapple, 3 sc in next sp, sl st in center sc on corresponding 2d sp on previous Pineapple, 2 sc in bal. of sp, (3 sc in next sp, sl st in center sc on next sp on previous Pineapple, 2 sc in bal. of sp) twice, 5 sc in next sp, 3 sc in next sp, ch 7, turn, sk 9 sc on previous Pineapple, sl st in next sc, ch 1, turn, 9 sc in lp, 2 sc in bal. of ch-3 sp, 5 sc in next sp, 3 sc in next sp, ch 9, turn, (dc, ch 5, dc) in center sc of 1st bar, ch 9, sk 9 sc on next Pineapple, sl st in next sc; ch 1, turn, 11 sc in 1st sp, 7 sc in center sp, 11 sc in next sp, 2 sc in bal. of ch-3 sp, (5 sc in next sp) 11 times; repeat from \* around, join, sl st in next 2 sc and complete pattern, sl st in next 10 sc (to center sc in center sp).

**Rnd 4 (Ruffle):** Ch 10, tr in same sc, \* ch 5, tr in center sc in next sp, ch 5, tr in 1st sc on next bar, (ch 5, sk 4 sc, tr in next sc) twice, ch 5, (tr, ch 5, tr) in center sc of next sp, ch 5, tr in 1st sc in next sp, (ch 5, sk 4 sc, tr in next sc) twice, ch 5, tr in center sc of next sp on Pineapple, ch 5, (tr, ch 5, tr) in center sc of next (center) sp; repeat from \* around, join to 5th st of ch-10.

**Rnd 5:** Sl st in next sp, ch 8, dc in same sp, (ch 5, dc) 3 times in same sp, \* (ch 5, dc in next sp) 5 times, (ch 5, dc) 5 times in next sp; repeat from \* around; join to 3d st of ch-8.

**Rnd 6:** Sl st to center of next ch-5, ch 8, dc in next sp, (ch 5, dc in next sp) repeated around; join to 5th st of ch-8. Repeat Rnd 6 once.

**Rnd 8:** Repeat Rnd 6 but start with ch-9 and make ch-6 sps around.

**Rnd 9:** Sl st in next sp, ch 5, (2 tr, ch 3, 3 tr) in same sp, \* (ch 6, dc in next sp) 9 times, ch 6, (3 tr, ch 3, 3 tr) in next sp; repeat from \* around, join to ch-5, sl st to next ch-3 sp.

**Rnd 10:** To join to Outer Daisy Ring, ch 5, 2 tr in same sp, ch 2, sl st in center ch-9 sp on 1 Daisy, \*\*\* ch 2, 3 tr back in same sp on Ruffle, \* ch 4, sl st in next petal on same Daisy, ch 4, dc back in next sp on Ruffle, ch 4, sl st in adjoining petal on next Daisy, ch 4, \*\* dc back in next sp, ch 4, sl st in next ch-9 sp on same Daisy, ch 4, dc back in next sp; repeat from \* twice and from \* to \*\* again; 3 tr in next ch-3 sp of shell, ch 2, sl st in next ch-9 sp on same Daisy; repeat from \*\*\* around; join. Fasten off.

**Edge:** Attach White to center sp on 1 Daisy, \* ch 8, sl st in 5th st from hook for a p, ch 4, sc in next petal, ch 8, p, ch 4, tr in center st of next ch-9 sp, tr in center st of 1st sp on next Daisy, ch 8, p, ch 4, sc in next petal, ch 8, p, ch 4, sc in next sp; repeat from \* around; join and fasten off.

Dip doily in hot starch (2 heaping tpsps Argo Gloss Starch to 1 cup water). Roll in paper towels to absorb excess. Stretch Ruffle a small section at a time and press partly dry thru several thicknesses of cloth, stretch and pin down center right-side-up in a true circle on waxed paper and press flat. Stretch Ruffle and pin down 3 Daisies in line with each Pineapple. Stuff crumpled waxed paper in each ripple between Pineapples. Leave until dry.





## DAISY FRILLS



Directions on Page 6

Page Eight

## GRAPE MAT



**DAISY MERCERIZED CROCHET COTTON**, Art. 65:  
3 skeins Turquoise and 1 skein White, Size 20.

No. 5 and 7 Steel Crochet Hooks.

SIZE — 15½ inches.

Work tightly for best results.

Starting in center with 3 strands Turquoise and No. 5 hook, ch 2.

**Rnd 1:** 8 sc in 2d ch from hook, join with sl st in 1st sc.

**Rnd 2:** Ch 5, dc in same st, (in next sc make dc, ch 2, dc) 7 times; join to 3d st of ch-5.

**Rnd 3:** Sl st in next ch-2 sp, ch 5, dc in same sp, (dc in next 2 dc, in next sp make dc, ch 2, dc) repeated around; join to 3d st of ch-5.

**Rnd 4:** Sl st in next ch-2 sp, ch 5, dc in same sp, \* dc in each dc across to corner (2 more than last rnd), (dc, ch 2, dc) in corner sp; repeat from \* around; join to 3d st of ch-5. Repeat Rnd 4 thru Rnd 22.

**Rnd 23:** Ch 1, (3 sc in next sp, hdc in next 3 dc, work dc across thru 4th dc from corner, hdc in next 3 dc) repeated around; join to 1st sc.

**Rnd 24:** Ch 1, sc in same sc, sc in next 2 sc, \* hdc in next 2 sts, make dc across thru 3d st from corner, hdc in next 2 hdc, sc in next 3 sc; repeat from \* around; join to 1st sc.

**Rnd 25:** Ch 1, sc in same sc, sc in each st around; join and fasten off.

**Rnd 26:** Attach 2 strands White with No. 7 hook to center of 3 sc between scallops, \* (sc, ch 2, sc) in next sc, sl st in next sc; repeat from \* around; join and fasten off.

### GRAPE SPRAY:

**LEAF:** With 2 strands White and No. 7 hook, ch 9, sk 1 ch, (sc in next ch, draw up a lp in next 2 ch, Y O and draw thru all 3 lps on hook for a 2-sc dec) twice, sc in next 2 sc. Ch 9, sk 1 ch, sc in next 8 ch. Ch 7, sk 1 ch, (sc in next ch, 2 sc in next ch) twice, sc in next 2 ch, draw up a lp at base of 1st 2 ribs, Y O and draw thru all 3 lps.

**Rnd 2:** Ch 1, sc in same st on 1st rib, hdc in next st, dc in next 2 sts, 2 dc in next st, hdc in next 2 sts, sc in next st, ch 2, sl st in last sc for a p, sc in 1st sc on other side of rib, hdc in next st, dc in next st, draw up a lp in next 3 sts, sk 1 st in angle, draw up a lp in next 2 sts on next rib, Y O and draw thru all 6 lps, dc in next 2 sts made into a Cluster-dec, dc in next st, hdc in next st, 2 sc in next st, a ch-2 p, sc in 1st sc on other side, hdc in next st, dc in next 3 dc, draw up a lp in next 3 sts, sk 1 st in angle, draw up a lp in next st, Y O and draw thru all 5 lps on hook, dc in next 2 sts, hdc in next st, sc in next st, a p, sc in 1st sc on other side of rib, hdc in next st, 2 dc in next st, dc in next 3 sts, sc in end st, a p, sc in 1st sc on other side of rib, hdc in next st, 2 dc in next st, dc in next 3 sts, hdc in next st, sl st in next st; ch 25, sk 1st st, sc in next 7 ch; ch 35, sk 1st st, sl st in next 34 ch, sk 1 st, sl st in next 4 ch, ch 5, sk 1 st, sl st in next 4 ch, sl st in next 12 ch of main stem, sl st in next st on Leaf. Fasten off.

**GRAPES:** Ch 13, 5 dc in 6th st from hook, remove hook from lp, insert it back in 1st dc from front-to-back, catch lp and draw thru (popcorn st), (ch 3, sk 2 ch, pc st in next ch) twice, ch 1, dc in end st.

**Row 2:** Ch 3, turn, 5 dc in 1st dc and make into a reverse pc st by inserting hook from back-to-front thru 1st dc, catch lp and pull thru, (ch 3, a reverse pc st in ch-3 sp between next 2 pc sts) twice, ch 3, reverse pc st in end ch-4.

**Row 3:** Ch 3, turn, pc st between 1st 2 pc sts, (ch 3, pc st between next 2 pc sts) twice.

**Row 4:** Ch 3, turn, reverse pc st between 1st 2 pc sts, ch 3, reverse pc st between next 2 pc sts.

**Row 5:** Ch 3, turn, pc st between 2 pc sts. Fasten off. Sew to short stem midway of Leaf stem.

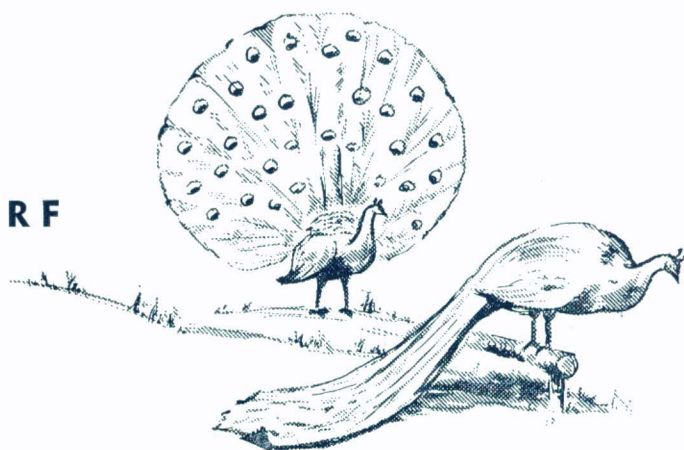
**TENDRIL:** Ch 50, sk 1st ch, sl st in next 49 ch. Cut, leaving a sewing end. Sew between 3d & 4th Rows on left side of Grapes.

Sew Spray on one section of Mat as in illustration. Repeat on other 7 sections.

Stretch and pin Mat right-side-down in true shape. Steam and press dry thru a cloth.

# "Peacock"

## FILLET BUFFET SCARF



**DAISY MERCERIZED CROCHET COTTON**, Art. 65: 2¼ skeins White, Size 20; or

**LILY MERCERIZED CROCHET COTTON** (big balls), Art. 36: 2 balls White, Size 20; or

**LILY MERCERIZED CROCHET MERCERIZED COTTON**, Art. 161: 3 balls White, Size 20.

No. 12 Steel Crochet Hook.

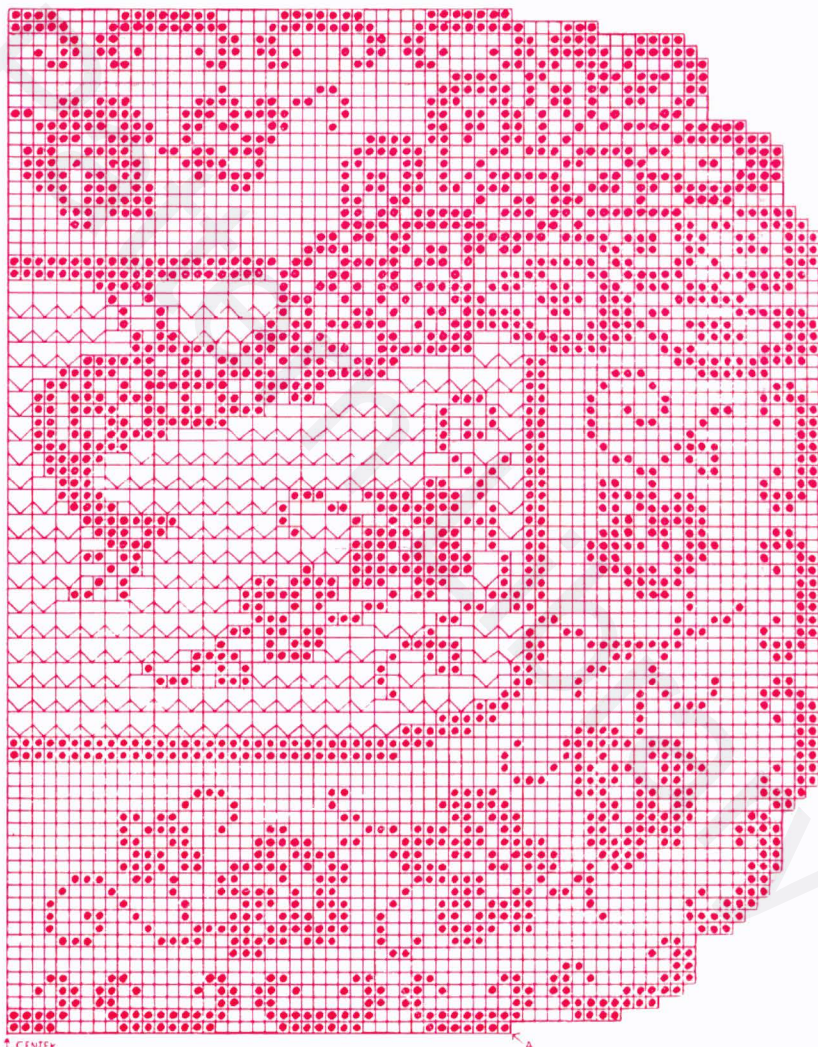
**Gauge:** 5 rows - 1 inch; 5 sps or blks - 1 inch.

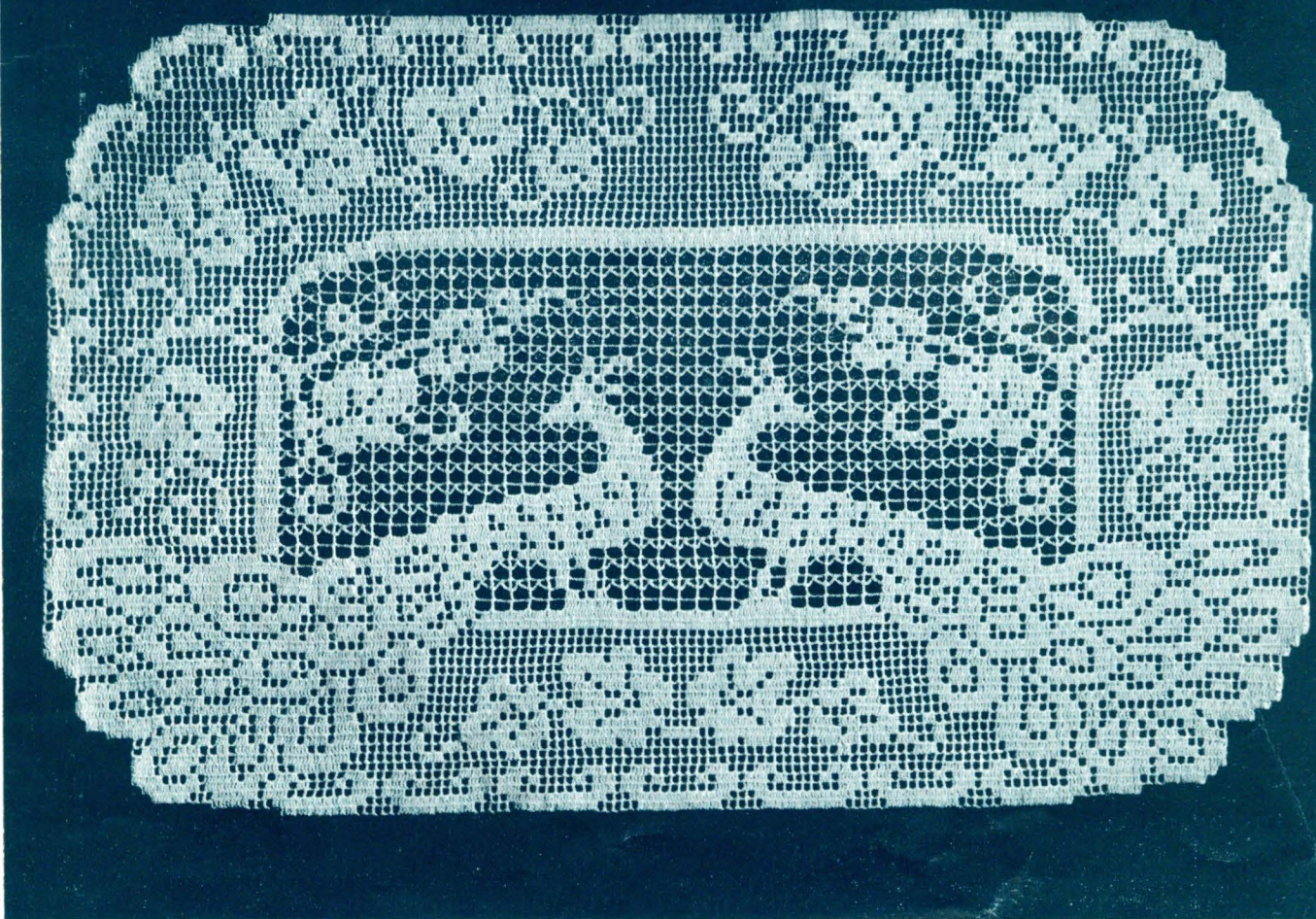
Work tightly for best results.

**SCARF** — (16½ x 26 inches): Ch 250.

**Row 1:** Starting at A on Chart, sk 4 ch, dc in next 21 ch (7 blks), (ch 2, sk 2 ch, dc in next ch) 5 times (5 sps), continue with 7 blks, 5 sps, (8 blks, 5 sps) 3 times, 7 blks, 5 sps and 7 blks. Mark right side of this row as right side of Scarf.

**Row 2:** Ch 30, turn, sk 4 ch, dc in next 12 ch, (ch 2, sk 2 ch, dc in next ch) 4 times, dc in next 2 ch, dc in next dc, (4 blks, 4 sps and 1 blk added) continue with 7 blks, 2 dc in next sp, dc in next dc (1 blk), 3 sps, 9 blks and follow Chart across. At end, to add 1 blk, Y O, insert hook in same st where last dc was made, Y O and draw thru 1 lp tightly (a 1-ch), (Y O and draw thru 2 lps) twice to complete dc. \* Y O, insert hook in 1-ch made at base of last dc, Y O and draw thru 1 lp (a 1-ch), (Y O and draw thru 2 lps) twice, \*\* repeat from \* once (3 dc





added). Ch 5, dc in 1-ch at base of last dc, (ch 5, turn, dc in 3d st of last ch-5) 3 times (4 added sps); Y O, turn, insert hook in 3d st of last ch-5, Y O and draw thru 1 lp (a 1-ch), (Y O and draw thru 2 lps) twice. Repeat from \* to \*\* 11 times (4 added blks).

**Row 3:** Ch 12, turn, sk 4 ch, dc in next 8 ch (3 added blks), dc in next dc, 5 blks, 2 sps, 2 blks and follow Chart across, adding 9 dc at end for 3 added blks.

**Row 4:** Ch 9, turn, sk 4 ch, dc in next 5 ch (2 added blks), dc in next dc, 3 blks, 4 sps, 2 blks, 1 sp and follow Chart across, adding 6 dc at end for 2 added blks.

**Row 5:** Ch 6, turn, sk 4 ch, dc in next 2 ch (1 added blk), dc in next dc, 2 blks, 5 sps, 1 blk, 1 sp and follow Chart across, adding 3 dc at end for 1 added blk.

**Row 6:** Working even, ch 3, turn, holding back the last lp of each dc on hook make dc in 1st 2 dc, Y O and draw thru all 3 lps on hook at same time (Cluster-dec), dc in next 5 dc (2 blks), follow Chart across to end.

**Row 7:** Start as in Row 6.

**Row 8:** Ch 5, turn, sk 3 dc, dc in next dc (1 sp). Follow Chart across.

**Row 9:** Start and end as in Row 3.

**Rows 10, 11 & 12:** Start and end as in Row 5.

**Row 13:** Start as in Row 6.

**Row 14:** Start and end as in Row 5.

**Rows 15, 16 & 17:** Start as in Row 6.

**Row 18:** Start as in Row 6.

**Rows 19, 20 & 21:** Start and end as in Row 5. Starting as in Row 6, continue thru Row 24.

**Row 25:** Ch 3, turn, 2 blks, 12 sps, 1 blk, 1 sp, 4 blks, 8 sps, 6 blks, (ch 3, sk 2 dc, sc in next dc, ch 3, sk 2 dc, dc in next dc) 32 times (32 Lacet Sts), 6 blks and complete row.

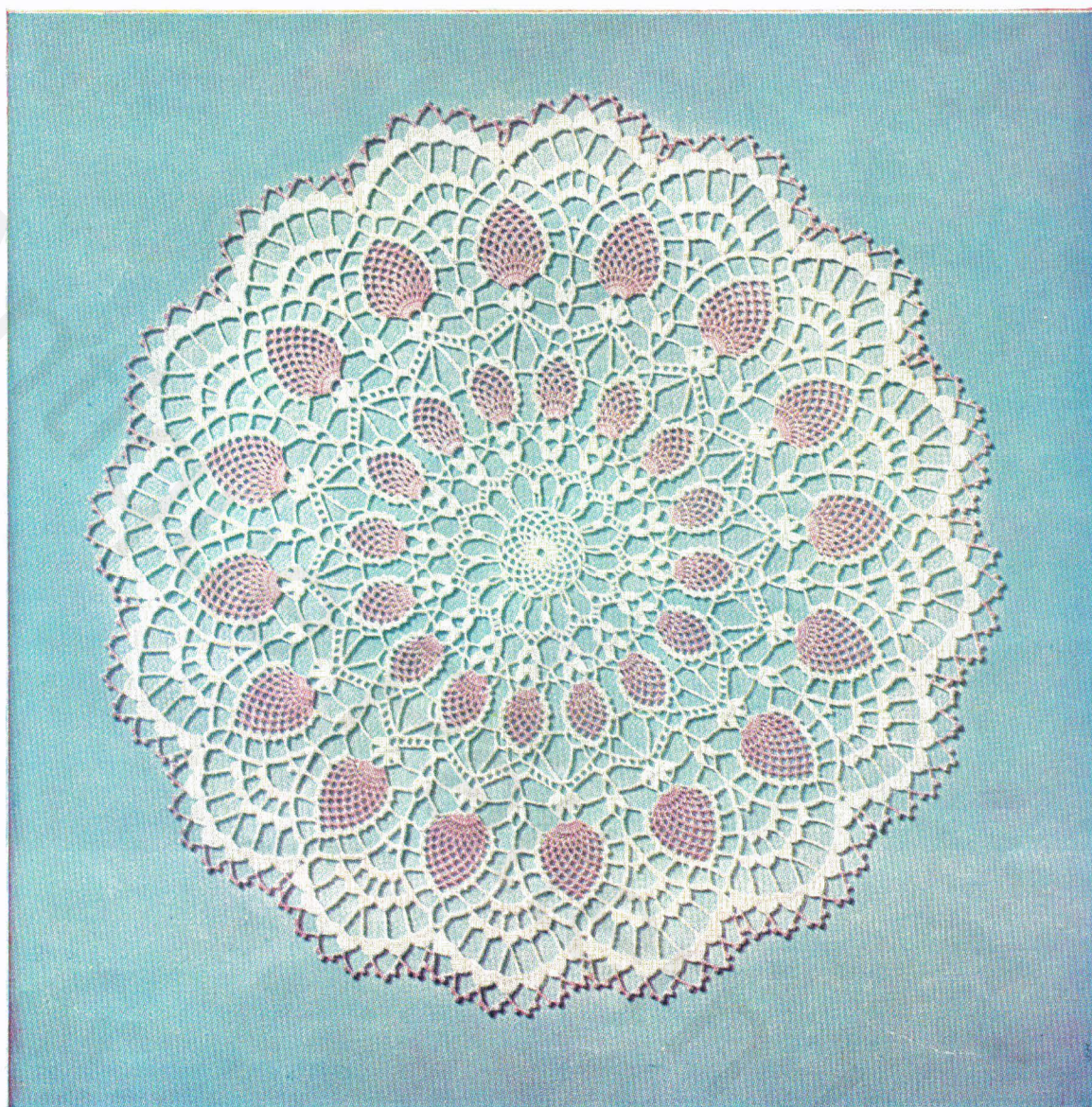
**Row 26:** Ch 3, turn, 2 blks, 1 sp, 1 blk, 10 sps, 1 blk, 11 sps, 5 blks, 1 sp, ch 5, sk 5 dc, dc in next dc, (ch 5, dc in next dc) 32 times, ch 5, sk 5 dc, dc in next dc (34 long sps), 1 sp, 5 blks and complete row.

**Row 27:** Ch 3, turn, 2 blks, 2 sps, 1 blk, 4 sps, 3 blks, 2 sps, 1 blk, 10 sps, 3 blks, make 2 Lacet Sts, ch 3, sc in next long sp, ch 3, dc in next dc (a 3d Lacet St), ch 5, dc in next dc, 30 Lacet Sts, 1 long sp, 3 Lacet Sts, 3 blks and complete row.

**Row 28:** Ch 5, turn, sk 3 dc, dc in next dc, 4 blks, (3 sps, 1 blk) twice, 1 sp, (1 blk, 4 sps) twice, 2 blks, 4 long sps, 3 dc in next long sp, ch 2, dc in next dc (1 blk and 1 sp made), complete row as in Chart. Follow Chart thru Row 65.

**Next Rows:** To decrease at beg. of rows, ch 1, turn, sk 1st dc, sl st in each dc to where next row starts, ch 3 to start next blk or ch 5 to start next sp. Continue thru Row 83. Fasten off.

Stretch and pin right-side-down in true shape. Steam and press dry thru a cloth.



# "Pineapple" CENTERPIECE

**DAISY MERCERIZED CROCHET COTTON**, Art. 65:  
1 skein each Lt. Pink and Rose Pink, Size 20; or

**LILY MERCROCHET MERCERIZED COTTON**, Art. 161:  
2 balls Baby Pink and 1 ball Beauty Pink, Size 20.

No. 12 Steel Crochet Hook.

**SIZE** — 17 inches.

Work tightly for best results.

Starting in center with Lt. Pink, ch 8, join with sl st to form ring.

**Rnd 1:** Ch 1, 16 sc in ring, join.

**Rnd 2:** (Ch 5, sc in next sc) 15 times, ch 2, dc in next st.

**Rnd 3:** (Ch 4, sc in next lp) 15 times, ch 1, dc in dc at end of last rnd.

**Rnd 4:** Repeat Rnd 3.

**Rnd 5:** (Ch 5, sc in next lp) 15 times, ch 2, dc in dc at end of last rnd.

**Rnd 6:** Repeat Rnd 5.

**Rnd 7:** (Ch 5, sc in next lp, ch 14, sc in same lp) 15 times, ch 5, sc in next lp, ch 6, tr tr in same lp for final large lp.

**Continued on Page 14**

# Coin Dots



## PLACE MAT

**DAISY MERCERIZED CROCHET COTTON**, Art. 65: 1½ skeins each Yellow, Lt. Pink and Lt. Blue, Size 30; or

**LILY MERCROCHET MERCERIZED CROCHET COTTON**, Art. 161: 2 balls each Dk. Yellow, Baby Blue and Baby Pink, Size 30; and

**LILY SIX STRAND FLOSS**, Art. 21: 5 skeins No. 150 Oriental Blue and ½-skein each No. 392 Pink, No. 186 Brilliant Green, No. 124 Lt. Lavender, No. 202 Flame, No. 189 Chartreuse, No. 172 Rose, No. 181 Spring Green, No. 102 Orange, No. 222 Amethyst, No. 180 Pea Green, No. 104 Dp. Yellow and No. 390 Lt. Steel Blue.

Nos. 5 and 7 Steel Crochet Hooks.

SIZE — 12 x 18 inches.

Work very tightly for best results.

**FOUNDATION:** Using 1 strand of each color of **MERCROCHET** (or **DAISY**) and No. 5 hook, make 15-inch tight chain.

**Row 1:** Sc in 2d ch, (ch 1, sk 1 ch, sc in next ch) repeated for 11½ inches. Cut and rip excess chain.

**Row 2:** Ch 1, turn, sc in 1st sc, (ch 1, sc in next sc) repeated across. Repeat Row 2 for 17½ inches.

**Edge:** Ch 1, turn, 3 sc in 1st sc, \* (sc in next ch-1 sp, sc in next sc, sc in next sp, sk next sc) repeated across; 3 sc in corner, (2 sc in next 2-row rib, 1 sc in next rib) repeated across, 3 sc in corner; repeat from \*, join and fasten off.

Continued on Page 14





## CENTERPIECE

Continued from Page 12

**Rnd 8:** Ch 3, 2 dc in final lp, (ch 13, 3 dc in next ch-14 lp) repeated around; join to ch-3, sl st to 3d st of next ch-13.

**Rnd 9:** Ch 4, \* sk 1 ch, dc in next ch, ch 1, sk 1 ch, (dc, ch 5, dc) in next (center) ch, (ch 1, sk 1 ch, dc in next ch) twice, \*\* dc in 3d st on next lp, ch 1 and repeat from \* around, ending at \*\*, join to 3d st of ch-4, sl st to ch-5 center sp.

**Rnd 10:** Ch 5, holding back the last lp of each tr on hook, make 2 tr in same sp, Y O and draw thru all 3 lps on hook at same time (Cluster), ch 7, 3-tr Cluster in same sp, (ch 8, in ch-5 center sp of next point make 3-tr Cluster, ch 7 and 3-tr Cluster) repeated around; join to 1st Cluster.

**Rnd 11:** Sl st in next ch-7 sp, ch 5, 2-tr Cluster in same sp, (ch 7, 3-tr Cluster in same sp, ch 6, sc in next ch-8 sp, ch 6, 3-tr Cluster between next 2 Clusters) repeated around; join to 1st Cluster. Fasten off.

**Rnd 12: PINEAPPLE:** Attach Rose Pink between any 2 Clusters, ch 3, 6 dc in same sp. Ch 4, turn, sk 1st dc, dc in next dc, (ch 1, dc in next st) 5 times. Ch 5, turn, sc in 1st ch-1 sp, (ch 5, sc in next sp) 5 times, ch 2, dc in same end sp. Ch 5, turn, sc in next lp, (ch 5, sc in next lp) 4 times, ch 2, dc in end lp. \* Ch 5, turn, sc in next lp, (ch 5, sc in next lp) repeated across to 2d lp from end, ch 2, dc in end lp. Repeat from \* 3 times. Ch 5, turn, sc in next lp. Cut with 2-inch end. Repeat around (16 pineapples).

**Rnd 13:** Attach Lt. Pink to tip of 1 pineapple, ch 1 and working over Rose Pink thread end, (sc, ch 2, sc) 3 times in same lp, \* (sc, ch 2, sc) in next 7 sps, ch 5, sc in next ch-6 lp, ch 3, sc in next lp, ch 5, sk 1st row of next pineapple, (sc, ch 1, sc) in next 7 sps, (sc, ch 2, sc) 3 times in next (tip) lp; repeat from \* around; join, sl st to 2d ch-2.

**Rnd 14:** \* (Ch 9, sk 1 ch-2, sc in next ch-2) twice, ch 5, sc in 5th ch-2 on next pineapple, (ch 9, sk 1 ch-2, sc in next ch-2) twice; repeat from \* around; join with ch-4 and tr for final lp.

**Rnd 15:** \* Ch 11, sc in next lp, ch 11, make long tr (Y O 5 times and work off in twos as for tr tr) in next lp, long tr in 1st ch-9 lp on next pineapple, ch 11, sc in next lp; repeat from \* around; join, sl st in 1st 2 ch of next lp.

**Rnd 16:** In same lp \* make 4 sc, ch 5, sl st in last sc for a p and 4 sc; (ch 2, sk 2 ch of next lp, dc in next ch) 3 times, ch 2, (dc, ch 5, dc) between next 2 long tr, (ch 2, sk 2 ch of next lp, dc in next ch) 3 times, ch 2, in center of next lp repeat from \* around; join, sl st to next p.

**Rnd 17:** Ch 10, tr in same p, \* ch 8, in center ch-5 sp

of next point make 3-tr Cluster, ch 4, Cluster, ch 7, Cluster, ch 4 Cluster; ch 8, (tr, ch 5, tr) in next p; repeat from \* around; join to 5th st of ch-10. Fasten off.

**Rnd 18: PINEAPPLE:** Attach Rose Pink to center ch-7 sp of 1 Cluster-group, ch 3, 9 dc in same sp. Ch 4, turn, sk 1st dc, dc in next dc, (ch 1, dc in next st) 8 times. Ch 5, turn, sc in 1st sp, (ch 5, sc in next sp) 8 times, ch 2, dc in same end sp. \* Ch 5, turn, sc in next lp, (ch 5, sc in next lp) repeated to 2d lp from end, ch 2, dc in end lp. Repeat from \* 7 times. Ch 5, turn, sc in next lp. Cut with 2-inch end. Turn and repeat around (16 pineapples).

**Rnd 19:** With right-side-up, repeat Rnd 13 to \*; \* (ch 1, in next sp make sc, ch 2, sc) 9 times, ch 7, between next 2 tr make 3-tr Cluster, ch 7, 3-tr Cluster; ch 7, in 3d row on next pineapple make sc, ch 2, sc; (ch 1, in next sp make sc, ch 2, sc) 9 times, (sc, ch 2, sc) twice more in same (tip) sp; repeat from \* around; join, sl st to 2d (center) ch-2.

**Rnd 20:** Ch 14, tr in same ch-2, \* (ch 7, sk 1 ch-2, tr in next ch-2) 4 times, dtr down between Clusters, tr in 3d ch-2 on next pineapple, (ch 7, sk 1 ch-2, tr in next ch-2) 4 times to center ch-2 at tip, ch 9, tr in same ch-2; repeat from \* around; join to 5th st of ch-14.

**Rnd 21:** Ch 1, sc in same st, 11 sc in next ch-9 sp, \* (sc in next tr, 8 sc in next sp) 4 times, 8 sc in 1st sp on next pattern, sc in next tr, ch 4, turn, sl st in 9th sc up previous pattern, ch 1, turn, (3 sc, ch-5 p, 3 sc) in ch-4, 8 sc in next sp, sc in next tr, ch 12, turn, sk 8 sc on previous pattern, sl st in next sc, ch 1, turn, (sc, ch 1, 3 dc, ch 1, sc) 4 times in ch-12 sp, 8 sc in next sp, sc in next tr, ch 5, turn, tr in center dc of 1st scallop, (ch 5, tr in next scallop) 3 times, ch 5, sk 8 sc, sl st in next sc, ch 1, turn, in each ch-5 sp make sc, ch 1, 5 dc, ch 1, sc; 8 sc in next sp, sc in next tr, 4 sc in next ch-9 sp, ch 7, turn, tr tr in center dc of 1st scallop, ch 7, tr tr in next scallop, ch 7, (tr tr, ch 7, tr tr) in next (center) scallop, (ch 7, tr tr in next scallop) twice, ch 7, sk 12 sc, sl st in next sc; ch 1, turn, in each ch-7 sp make sc, ch 1, 1 dc, 7 tr, 1 dc, ch 1 and sc; 7 sc in bal. of ch-9 sp; repeat from \* around; sl st in 1st 5 sc and complete rnd. Fasten off.

**Rnd 22:** Attach to center tr on 1st scallop on 1 pattern, \* ch 8, sl st in 5th ch from hook for a p, (ch 6, p) twice, ch 4, sc in center tr of next scallop; repeat from \* 5 times, ch 2, sc in 1st scallop on next pattern; repeat from \* around; join and fasten off.

Stretch and pin doily right-side-down in a true circle. Steam and press dry thru a cloth.

## COIN DOTS

Continued from Page 13

**Rnd 2:** With No. 7 hook, attach No. 150 Oriental Blue Floss to 2d sc to right of center sc at 1 corner, (sk 1 sc, 5 dc in next sc, sk 1 sc, sc in next sc) repeated around, having a shell at each corner. Join and fasten off.

**COIN DOT:** (Starting at top left corner): With Oriental Blue, ch 2.

**Rnd 1:** 6 sc in 2d ch from hook. Do not join rnds. Mark end of rnds.

**Rnd 2:** 2 sc in each sc.

**Rnd 3:** (Sc in next sc, 2 sc in next sc) 7 times.

**Rnd 4:** (Sc in next 2 sc, 2 sc in next sc) 7 times.

**Rnd 5:** (Sc in next 3 sc, 2 sc in next sc) 8 times.

**Rnd 6:** (Sc in next 4 sc, 2 sc in next sc) 3 times, sc in next 4 sc, sl st in next 2 sc; cut with sewing end. Sew wrong-side-up 2 3/4 inches from left end and from top edge. Make 2 more Dots across end in Pink and Brilliant Green.

**Next Row:** 2 Dots, -Lt. Lavender and Flame.

**3d Row:** 3 Dots, -Chartreuse, Rose and Spring Green.

**4th Row:** 2 Dots, -Orange and Amethyst.

**5th Row:** 3 Dots, -Pea Green, Dp. Yellow and Steel Blue.

Sew in place, evenly spaced.

Stretch and pin Mat right-side-down in true shape. Steam and press dry thru a cloth.

# Chair Set

ILLUSTRATED ON BACK COVER

**LILY MERCERIZED CROCHET COTTON** (big ball), Art. 36: 2 balls White, Size 20; or

**DAISY MERCERIZED CROCHET COTTON**, Art. 65: 3 skeins White, Size 20; or

**LILY MERCROCHET MERCERIZED COTTON**, Art. 161: 4 balls White, Size 20.

No. 12 Steel Crochet Hook.

Work very tightly for best results.

**1st MOTIF** (4-inches square): Starting in center, ch 9, dc in 9th ch from hook, (ch 5, dc in same st) twice, ch 5, join with sl st in next 3d st of ch-9. Wrap starting thread end around 1 dc up to edge.

**Rnd 2:** Working over thread end, sl st in next ch-5 sp, ch 5, 6 tr in same sp, (ch 9, 7 tr in next sp) 3 times, ch 4, join with tr in top of 1st ch-5 (ending at exact corner).

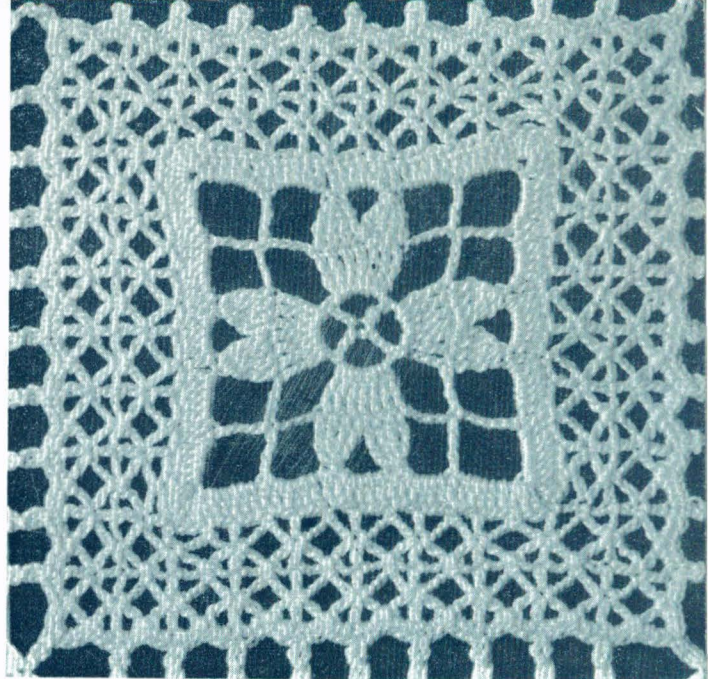
**Rnd 3:** Ch 11, \* holding back the last lp of each tr on hook make tr in next 4 tr, Y O and draw thru all 5 lps on hook at same time (Cluster), ch 5, (tr in same tr with last tr, tr in next 3 tr) made into a 4-tr Cluster, ch 5, \*\* (tr, ch 11, tr) in 5th (center) st of corner ch-9, ch 5 and repeat from \* around, ending at \*\*: tr in next tr, ch 5, tr in 6th st of 1st ch-11 (ending at exact corner).

**Rnd 4:** Ch 4, 3 dc in side-top of last tr, \* (5 dc in next sp, dc in next st) 4 times, 5 dc in corner sp, 7 dc in 6th (center) st of same sp; repeat from \* around; end with 3 dc in same st with 1st 3 dc, join to ch-4.

**Rnd 5:** Ch 6, \* sk 2 dc, sc in next dc, ch 3, sk 2 dc, dc in next dc, (ch 3, sk 2 dc, sc in next dc, ch 3, sk 2 dc, dc in next dc) 5 times to center dc at next corner, ch 3, dc in same corner dc, ch 3 and repeat from \* around; end with ch 3, join to 3d st of 1st ch-6.

**Rnd 6:** Ch 5, \* (dc in same st, dc in next dc) worked off tog into a Cluster, ch 2, dc in same dc, \*\* ch 2 and repeat from \* across to 1st dc at corner ending at \*\*: ch 2, dc in same corner dc, ch 5, (dc in side-top of last dc, dc in next corner dc) made into a Cluster, ch 2, dc in same corner dc, ch 2 and repeat from \* around; ch 2, join to 3d st of 1st ch-5.

**Rnd 7:** Ch 6, \* (sc between 2 dc of next Cluster, ch 3,



dc in next dc, ch 3) repeated across to 3d st of corner ch-5, ch 3, dc in same st, ch 3 and repeat from \* around; join to 3d st of ch-6.

**Rnd 8:** Repeat Rnd 6.

**Rnd 9:** Ch 1, sc in same st, \* 2 sc in next sp, sc between 2 dc of next Cluster, 2 sc in next sp, sc in next dc, ch 4, sl st in last sc for a p; repeat from \* to corner; \*\* in corner ch-5 make 3 sc, a ch-7 p and 3 sc; sc between next 2 dc, 2 sc in next sp, sc in next dc, a ch-4 p; repeat from \* around; join to 1st sc, a p and fasten off.

**2d MOTIF:** Repeat to \*\* in Rnd 9; 3 sc in corner ch-5, ch 3, sl st in 1 lp of 4th (center) st of a corner p on 1st Motif, ch 3, sl st back in last sc, 3 sc in bal. of same sp, sc between next 2 dc, \* 2 sc in next sp, sc in next dc, ch 2, sl st in next p on 1st Motif, ch 2, sl st back in last sc, 2 sc in next sp, sc between next 2 dc; repeat from \* across; 3 sc in corner sp, ch 3, sl st in 1 lp of center st of corner p on 1st Motif, ch 3, sl st back in last sc, 3 sc in bal. of corner sp; complete rnd as for 1st Motif. Make a 3d Motif joining it to 2d Motif in same way, going into same center st of corner p.

Make a 4th Motif joining it to 3d and 1st Motifs.

**CHAIR BACK DOILY:** Make 14 Motifs. Join 12 Motifs 3 x 4. Join 2 remaining Motifs tog and to 2d and 3d Motifs on 1 long side.

**ARM REST DOILY:** Make 6 Motifs and join 2 x 3. Repeat for 2d Doily.

Stretch and pin Doilies right-side-down in true shape. Steam and press dry thru a cloth.

## ABBREVIATIONS AND TERMS FOR DOILY BOOK

St—Stitch

Sl St—Slip Stitch

Ch—Chain

Sc—Single Crochet

Hdc—Half Double Crochet

Dc—Double Crochet

Tr—Treble

Dtr—Double Treble

Tr Tr—Triple Treble

Long Tr—Long Treble

Rnd—Round

Sp—Space

Lp—Loop

Y O—Yarn Over

Tog—Together

Sk—Skip

Inc—Increase

Dec—Decrease

Cluster-dec—Cluster-decrease

Bal—Balance

P—Picot

\*Repeat from asterisk (\*) as many times as specified in instructions.

( ) Repeat everything within parenthesis ( ) as many times as specified in instructions.



FREE DISTRIBUTION ONLY. NOT FOR SALE

# Doilies

*Lily* 

DESIGN BOOK No. 79

10¢

PRINTED IN U.S.A.

